

# 1 Neuromodulation through Brain Stimulation-assisted 2 Cognitive Training in Patients with Post-Chemotherapy 3 Cognitive Impairment (Neuromod-PCCI): Study Protocol of 4 a Randomized Controlled Trial

5  
6 Merle Rocke<sup>1\*</sup>, Elena Knochenhauer<sup>1\*</sup>, Friederike Thams<sup>1</sup>, Daria Antonenko<sup>1</sup>, Anna  
7 Elisabeth Fromm<sup>1</sup>, Nora Jansen<sup>1</sup>, Ulrike Grittner<sup>2,3</sup>, Sein Schmidt<sup>4</sup>, Eva-Lotta  
8 Brakemeier<sup>5</sup>, Agnes Flöel<sup>1,6</sup>

## 9 10 **Affiliations:**

11 <sup>1</sup> Department of Neurology, Universitätsmedizin Greifswald, Ferdinand-Sauerbruch-  
12 Straße, 17475 Greifswald, Germany

13 <sup>2</sup> Berlin Institute of Health (BIH), at Charité – Universitätsmedizin Berlin, Charitéplatz  
14 1, 10117 Berlin, Germany

15 <sup>3</sup> Institute of Biometry and Clinical Epidemiology, Charité – Universitätsmedizin  
16 Berlin, Charitéplatz 1, 10117, Berlin, Germany

17 <sup>4</sup> Department of Neurology and Experimental Neurology, Charité-Universitätsmedizin  
18 Berlin, Berlin, Germany

19 <sup>5</sup> Department of Psychology and Psychotherapy, Universität Greifswald, Franz-  
20 Mehring-Str. 47, 17489 Greifswald, Greifswald, Germany

21 <sup>6</sup> German Centre for Neurodegenerative Diseases (DZNE) Standort Greifswald,  
22 Greifswald, Germany

23  
24 \* contributed equally

25  
26 Corresponding author:

27 Agnes Flöel, MD

28 University Medicine Greifswald

29 Department of Neurology

30 Ferdinand-Sauerbruch-Straße,

31 D-17475 Greifswald

32 E-mail: [agnes.floeel@med.uni-greifswald.de](mailto:agnes.floeel@med.uni-greifswald.de)

33 Phone: +49-3834-86-6815

34 Fax: +49-3834-86-6875

35  
36 Emails: [merle.rocke@stud.uni-greifswald.de](mailto:merle.rocke@stud.uni-greifswald.de); [elena.knochenhauer@uni-greifswald.de](mailto:elena.knochenhauer@uni-greifswald.de); [friederike.thams@uni-greifswald.de](mailto:friederike.thams@uni-greifswald.de); [daria.antonenko@med.uni-greifswald.de](mailto:daria.antonenko@med.uni-greifswald.de); [anna.fromm@med.uni-greifswald.de](mailto:anna.fromm@med.uni-greifswald.de); [nora.jansen@med.uni-greifswald.de](mailto:nora.jansen@med.uni-greifswald.de); [ulrike.grittner@charite.de](mailto:ulrike.grittner@charite.de); [sein.schmidt@charite.de](mailto:sein.schmidt@charite.de); [eva-lotta.brakemeier@uni-greifswald.de](mailto:eva-lotta.brakemeier@uni-greifswald.de); [agnes.floeel@med.uni-greifswald.de](mailto:agnes.floeel@med.uni-greifswald.de)

41  
42 **NOTE:** This preprint reports new research that has not been certified by peer review and should not be used to guide clinical practice.  
Word count: 4659

## 43 Abstract

44 *Introduction:* Breast cancer is the most common form of cancer in women. A  
45 considerable number of women with breast cancer who have been treated with  
46 chemotherapy, subsequently develop neurological symptoms such as concentration  
47 and memory difficulties (also known as ‘chemobrain’). Currently, there are no  
48 validated therapeutic approaches available to treat these symptoms. Cognitive  
49 training holds the potential to counteract cognitive impairment. Combining cognitive  
50 training with concurrent transcranial direct current stimulation (tDCS) could enhance  
51 and maintain the effects of this training, potentially providing a new approach to treat  
52 post-chemotherapy cognitive impairment (PCCI). With this study, we aim to  
53 investigate the effects of multi-session tDCS over the left dorsolateral prefrontal  
54 cortex in combination with cognitive training on cognition and quality of life in women  
55 with PCCI.

56 *Methods and analysis:* The Neuromod-PCCI trial is a monocentric, randomized,  
57 double-blind, placebo-controlled study. Fifty-two women with PCCI after breast  
58 cancer therapy will receive a 3-week tDCS-assisted cognitive training with anodal  
59 tDCS over the left dorsolateral prefrontal cortex (target intervention), compared to  
60 cognitive training plus sham tDCS (control intervention). Cognitive training will consist  
61 of a letter updating task. Primary outcome will be the performance in an untrained  
62 task (n-back task) after training. In addition, feasibility, safety and tolerability, as well  
63 as quality of life and performance in additional untrained tasks will be investigated. A  
64 follow-up visit will be performed one month after intervention to assess possible long-  
65 term effects. In an exploratory approach, structural and functional magnetic  
66 resonance imaging (MRI) will be acquired before the intervention and at post-  
67 intervention to identify possible neural predictors for successful intervention.

68 *Ethics and dissemination:* Ethical approval was granted by the ethics committee of  
69 the University Medicine Greifswald (BB236/20). Results will be available through  
70 publications in peer-reviewed journals and presentations at national and international  
71 conferences.

72 *Trial registration:* This trial was prospectively registered at ClinicalTrials.gov  
73 (Identifier: NCT04817566, registered March 26, 2021).

74

75 **Keywords:** transcranial direct current stimulation, working memory, transfer,  
76 executive function, quality of life

## 77 Strength and limitations of this study

78

79

80

81

82

83

84

85

86

87

88

89

- This is the first randomized controlled trial to investigate the feasibility and effects of combined cognitive training and tDCS on cognitive outcomes and quality of life in patients with post-chemotherapy cognitive impairment
- Results will help the development of treatment options for breast cancer patients with post-chemotherapy cognitive impairment
- Results may not be generalizable to male cancer patients
- Monocentric trial design may increase risk of bias

## 90 Introduction

91 With the development of new treatment options, the long-term survival rates of breast  
92 cancer patients is increasing <sup>1</sup>. However, cancer patients may develop cognitive  
93 impairments following chemotherapy <sup>2 3</sup>. Post-chemotherapy cognitive impairment  
94 (PCCI), also referred to as “chemobrain”, can persist for many years after  
95 chemotherapy and occurs in various cognitive domains, such as executive functions,  
96 memory, processing speed, and attention <sup>3 4</sup>. Beyond that, cognitive impairment may  
97 cause psychological distress and affect quality of life <sup>5-8</sup>.

98 The pathophysiology of PCCI remains poorly understood. Multiple mechanisms  
99 underlying patterns of cognitive impairment in cancer patients have been proposed,  
100 including neuroinflammation, direct neurotoxicity, as well as alterations in structure,  
101 function and metabolic profile of the brain <sup>9</sup> as well as changes in neurotransmitters,  
102 such as reduced concentrations of norepinephrine, dopamine and serotonin, among  
103 others <sup>10</sup>.

104 Thus far, no evidence-based treatment options are available. First studies have  
105 found preliminary evidence that cognitive training may improve cognitive abilities of  
106 patients with PCCI <sup>11-13</sup>. Von Ah et al. observed an improvement in trained functions  
107 and a transfer effect to untrained memory tasks as well as to self-rated subjective  
108 cognitive function, and reduced psychological stress in the trained group compared  
109 to a waiting list control group after training of memory and speed of processing <sup>12</sup>.  
110 Similarly, in the study of Kesler et al. participants trained cognitive flexibility, working  
111 memory, processing speed and verbal fluency, and subsequently showed enhanced  
112 performance in cognitive functions mediated by the prefrontal cortex as well as  
113 minor improvements in declarative memory scores<sup>13</sup>. Despite these promising  
114 preliminary findings, training programs have been time-intensive, involving several  
115 weeks of task practice, and transfer effects have not consistently been demonstrated  
116 <sup>14</sup>.

117 Non-invasive brain stimulation is an approach to boost training gains, which allows  
118 for shorter training periods and for induction of transfer to untrained functions.  
119 Transcranial direct current stimulation (tDCS) is an inexpensive, painless method that  
120 is well-tolerated, safe and easy to apply <sup>13</sup>. This promising approach is already widely

121 used for interventional and therapeutic purposes (see <sup>15</sup> for review). For administration of  
122 tDCS, a weak electric current is applied via two or more electrodes on the  
123 participant's scalp. The supposed mechanism of action is a directional modulation of  
124 the cortical excitability in the brain area under the electrodes as well as in functionally  
125 and structurally connected brain regions <sup>16</sup>. The application of direct current causes a  
126 shift in the resting membrane potential of the cortical neurons which in turn leads to a  
127 decrease of the threshold for triggering action potentials. Accordingly, the  
128 corresponding area of the brain shows a higher level of excitability. Furthermore, the  
129 excitatory effect of anodal stimulation leads to an increase in synaptic transmission,  
130 which can last for hours to days. This effect corresponds to long-term potentiation-  
131 like mechanism and can induce neural plasticity <sup>17</sup>. Promising results of the technique  
132 with regard to improving cognitive performance have been demonstrated in healthy  
133 aging, but also in patients with dementia or mild cognitive impairment (MCI) <sup>18 19</sup>.  
134 To our knowledge, no study to date has examined the effects of tDCS-assisted  
135 cognitive training in patients with PCCI in order to establish its potential to beneficially  
136 impact cognitive functions and patient-reported outcome measures such as health-  
137 related quality of life (HRQoL). In the Neuromod-PCCI study, we plan to assess in a  
138 double-blind randomized controlled phase II clinical trial if such a combined multi-  
139 session cognitive training plus tDCS intervention yields substantial long-term benefits  
140 and transfer effects in patients with PCCI. All patients will complete cognitive training  
141 of a letter updating task over nine training sessions with concurrent tDCS over the left  
142 dorsolateral prefrontal cortex (dlPFC). Half of the sample will receive anodal tDCS  
143 while performing the cognitive training, whereas the other half will undergo sham  
144 stimulation during training. The intervention will span three weeks, with three training  
145 sessions per week. We will assess behavioral outcome measures, such as direct  
146 training effects, feasibility, safety and tolerability, transfer to untrained domains, and  
147 long-term effects on cognition and quality of life at multiple time points. We will further  
148 elucidate neural characteristics associated with interventional success before the  
149 intervention and assess neural correlates at post-intervention. This protocol,  
150 describing the design and methods of the Neuromod-PCCI study, was prepared in  
151 accordance with the SPIRIT guidelines <sup>20 21</sup>  
152

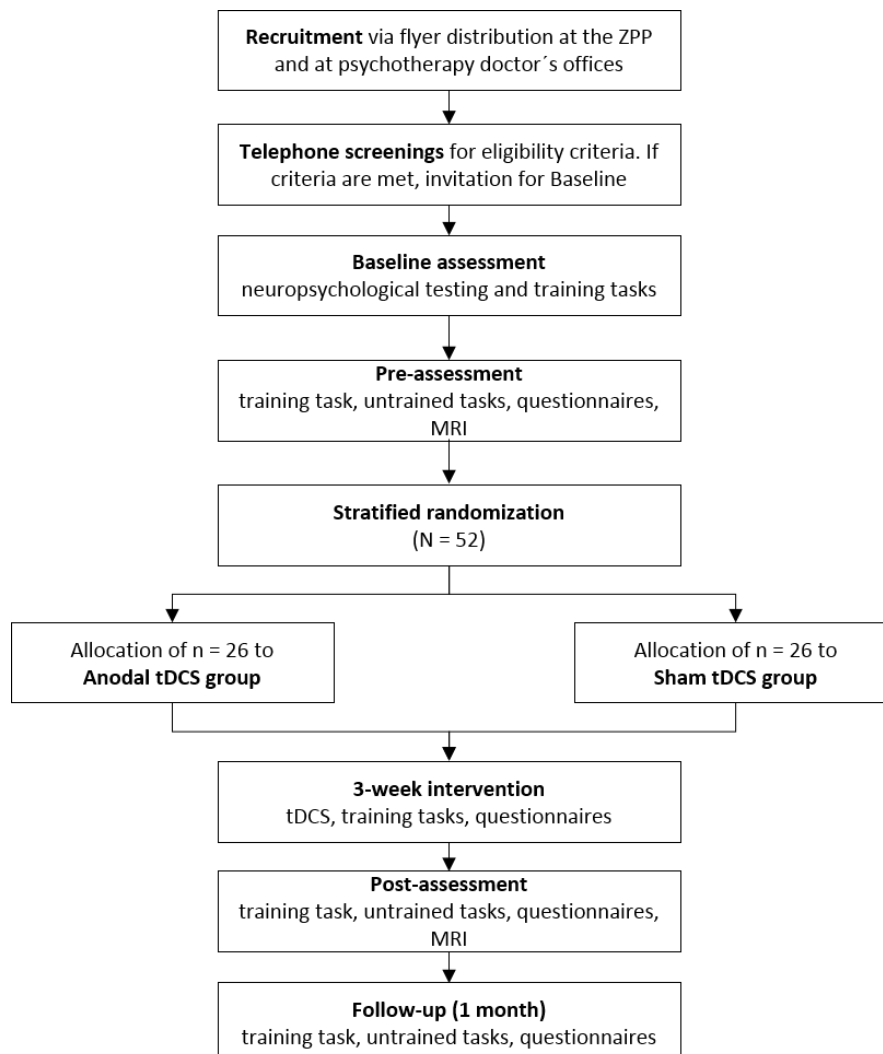
## 153 Methods: Participants, Intervention, and Outcomes

154

### 155 Design and Setting

156 This is a monocentric, randomized, double-blind, placebo-controlled study. The  
157 intervention is comprised out of nine sessions of cognitive training over three weeks,  
158 accompanied by anodal tDCS over the left dlPFC compared to sham tDCS. Subjects  
159 will participate in 13 sessions altogether with pre- and post-intervention assessments.  
160 One follow-up session is planned one month after the intervention to assess possible  
161 long-term effects. All sessions will take place at the University Medicine Greifswald,  
162 Greifswald, Germany. Magnetic resonance imaging (MRI) will be performed before  
163 the intervention and at post-intervention (“add-on” study, i.e. optional for the  
164 participants). A flowchart of the study is shown in **Figure 1**.

165



166

167 **Figure 1:** Neuromod-PCCI study flowchart. MRI, magnetic resonance imaging. tDCS, transcranial direct current  
168 stimulation. ZPP, Zentrum für Psychologische Psychotherapie (university psychotherapy outpatient clinic).

169

## 170 Eligibility Criteria

171 Participants included in the study must meet all of the following inclusion criteria:

- 172 • Chemotherapy to treat breast cancer (over 6 months since end of treatment)
- 173 • Self-reported concerns regarding cognitive function
- 174 • Age: 18-65 years
- 175 • Right-handedness

176

177 In case one or more of the following criteria are present at randomization, potential  
178 participants will be excluded:

- 179 • History of dementia before treatment of cancer
- 180 • Other neurodegenerative neurological disorders, epilepsy or a history of  
181 seizures
- 182 • Severe and untreated medical conditions that preclude participation in the  
183 training, as determined by responsible physician
- 184 • History of moderate to severe substance use disorder according to DSM-5 <sup>22</sup>
- 185 • Moderate to severe acute mental disorders according to DSM-5 <sup>22</sup>
- 186 • Contraindication to tDCS <sup>23</sup>

187

188 Note that contraindication to MRI will not be treated as exclusion criteria as  
189 participants will still be included in the study sample, but no MRI scans will be  
190 performed in these individuals. If all eligibility criteria are met and participants provide  
191 written informed consent, they will be included in the study sample.

192

## 193 Intervention

194 At each of the training sessions participants will receive either anodal or sham tDCS  
195 while completing a cognitive training task. Before starting the training task, the scalp  
196 of the participants will be numbed via an application of a topical anesthetic (EMLA®  
197 Cream, 25mg/g Lidocain + 25 mg/g Prilocain). The EMLA cream will be applied on  
198 the scalp according to the positioning of the electrodes and will be left to take effect  
199 for about 20 min. After the exposure time, the EMLA cream will be removed, the  
200 tDCS setup will be mounted and stimulation will be started.

201

202 Participants will be presented with a letter updating (LU) task on a tablet computer to  
203 train working memory updating. List of letters A to D (with lengths of 5, 7, 9, 11, 13 or  
204 15 letters, six times each; total of 36 lists) will be presented in random order, one  
205 letter at a time (presentation duration 2000 ms, ISI 500 ms). After each list  
206 participants will be asked to recall the last four letters that were presented.

207  
208 TDCS will be administered via a battery-operated stimulator (Neuroelectronics Starstim  
209 8, Barcelona, Spain). A current of 2 mA will be applied via five round electrode-gel  
210 filled NG PigStim electrodes (NE029, Neuroelectronics, Barcelona, Spain), connected  
211 to the stimulator and mounted in a neoprene head cap using the 10-20 EEG grid.  
212 The stimulation will be applied continuously for 20 min, with 20 additional sec of  
213 ramping at the beginning and at the end of stimulation, respectively. The anodal  
214 electrode will be placed over the left dlPFC (F3). The four cathodal electrodes will be  
215 arranged in a circle around the anodal electrode, in the positions of AFz, F7, C5 and  
216 FCz respectively, to constrain the current flow to the target region. In the sham  
217 group, current will be applied for 30 sec to blind the participants regarding their  
218 stimulation condition. Ramp times and electrode montage will be the same as in the  
219 anodal group. The cognitive training task and the stimulation will be started  
220 simultaneously. After every third session, participants will fill out an adverse-events  
221 questionnaire<sup>23</sup>. Participants will be instructed to avoid excessive consumption of  
222 alcohol or nicotine on the days of intervention. Moreover, they will be asked to  
223 adhere to their regular sleep schedule and to avoid drinking caffeine 90 min prior to  
224 the training sessions.

225

## 226 Outcome Measures

227

### 228 Primary Outcomes

229 Primary outcome measure will be working memory performance at post-assessment,  
230 operationalized by the percentage of correct responses in the n-back task (untrained  
231 task).

232

### 233 Secondary Outcomes

234 Secondary outcome will be working memory performance in the untrained task  
235 (nback,<sup>24</sup>) at follow-up assessment, operationalized by the percentage of correct



236 responses. Additionally, performance in primary memory training task (LU task, <sup>25</sup>)  
237 and visuospatial memory performance (virtual reality (VR) task, <sup>26</sup>) will be assessed  
238 at post- and follow-up-assessments. Performance in the training task will be  
239 operationalized by number of correctly recalled lists in the LU task and visuospatial  
240 performance will be operationalized by number of correctly recalled items in the VR  
241 task.

242 Further secondary outcome measures include Quality of Life, operationalized via the  
243 PROMIS Preference score (PROPr score) which serves as a summary scoring  
244 system of health-related quality of life including domains such as depression, fatigue,  
245 pain interference and ability to participate in social roles and activities<sup>27</sup>. The domain  
246 of cognitive function will be scored separately because it is the most important  
247 subscale for this study. Scoring will be carried out according to the scoring manuals  
248 (<http://www.healthmeasures.net/>). Feasibility will be operationalized through drop-out  
249 rates (% participants that did not complete post-assessment), adherence rates of  
250 training sessions (number of training sessions attended) and the post-study system  
251 usability questionnaire (PSSUQ)<sup>28</sup>, completed by study assessors. Additionally,  
252 structural and functional neural correlates (assessed at pre- and post-assessments),  
253 as measured by structural and functional MRI, will be assessed.

254

### 255 Exploratory Analyses

256 Exploratory analyses will be conducted for more detailed outcomes of the training  
257 task (e.g., outcomes dependent on list length in the LU task). Additionally, education,  
258 baseline cognitive ability or neuropsychological status as well as socio-demographic  
259 and clinical characteristics will be analyzed to identify potential predictors of training  
260 task performance and response to the intervention.

261

### 262 Participant Timeline

263 Individuals will participate in 13 visits, and two optional MRI sessions, taking place at  
264 the University Medicine Greifswald. After inclusion at baseline visit (V0), participants  
265 will attend the pre-assessment visit (V1) before starting the nine training visits during  
266 three consecutive weeks on three days a week (V2-V10). After the training, a post-  
267 assessment (V11) will be conducted and four weeks later a follow-up visit (V12) will  
268 be administered. MRI will be acquired before pre-assessment (V1) and at post-  
269 assessment (V13).

## 270 Baseline Measures

271 At baseline, participants will provide written informed consent and participate in a  
272 demographic interview. The participants will be asked to provide a record of their  
273 cancer specific medical history. If study-relevant information is missing, it will be  
274 requested from the responsible physician. Furthermore, a diagnostic interview to  
275 screen for mental disorders will be conducted and subsequently the participants will  
276 be tested with a comprehensive battery of neuropsychological tests to quantify  
277 cognitive function on different domains. The following interviews, questionnaires and  
278 tests will be conducted:

- 279 • Diagnostic interview for mental disorders (semi-structured diagnostic  
280 interview, DIPS)<sup>29</sup> to screen amongst others for moderate to severe acute  
281 mental disorders according to DSM-5<sup>22</sup> including depression, anxiety  
282 disorders, post-traumatic stress disorder and sleep disorders
- 283 • Childhood Trauma Screener (CTS)<sup>30</sup> to screen for childhood mal-treatment
- 284 • German version of the Auditory verbal learning test (AVLT)<sup>24 31</sup> to test verbal  
285 memory
- 286 • Rey-Osterrieth Complex Figure Test (ROCF)<sup>32</sup> to test visual-spatial memory
- 287 • Digit Span<sup>24</sup> and Trail Making Test A/B (TMT A/B)<sup>33</sup> to test short term/working  
288 memory
- 289 • Stroop test<sup>24 34</sup> and Semantic word fluency test<sup>24</sup> to test executive functions

290 Afterwards, participants will perform the training task as described above, with the  
291 exception that at baseline the task will consist of one practice trial with 4 lists and one  
292 actual training trial with 25 lists (compared to 36 lists in the training). The baseline  
293 assessment will have an approximated duration of 3,5h.

294

295 An actigraph (GT3X, ActiGraph, Pensacola, FL, USA) will be handed out to the  
296 participants at baseline to record sleep and activity data. Participants will be  
297 instructed to wear the device in the week leading up to pre-assessment and in the  
298 week following the post-assessment. Additionally, at baseline, participants will be  
299 asked to complete two sleep questionnaires: the Epworth Sleepiness Scale to  
300 measure daytime sleepiness<sup>35</sup> and the Morningness-Eveningness-Questionnaire<sup>36</sup>  
301 to estimate the participant's circadian rhythm.

302

### 303 Pre-, Post-, and Follow-Up-Assessments

304 All three sessions will follow the same procedure. First, self-reported well-being,  
305 quality and duration of sleep as well as potential stressors up to two hours prior to the  
306 visit will be assessed by the investigator via a questionnaire. The participants will  
307 further complete an array of QoL-related questionnaires: Patient Reported Outcomes  
308 Measure System (PROMIS®) which evaluates physical, mental and social health <sup>27</sup>  
309 and the EORTC QLQC30 which assesses the quality of life in cancer patients,  
310 supplemented with the module EORTC BR23 with the focus on breast cancer <sup>37</sup>. To  
311 further complete the data assessment regarding sleep, the Pittsburgh Quality Sleep  
312 Index <sup>38</sup> will be administered to assess sleep quality over a longer interval. Then,  
313 participants will complete the training task and untrained tasks. The follow-up  
314 assessments will provide the possibility for assessing the maintenance of training  
315 and transfer effects.

316

### 317 Sample Size

318 Power calculation is based on recent studies using multi-session application of  
319 cognitive training compared to a control training on immediate performance in the  
320 trained task (primary outcome) <sup>39-41</sup>. Based on these data, we estimated an effect  
321 size of 0.8 (Cohen's d). To demonstrate an effect in the primary outcome between  
322 cognitive training groups and control (% correct in the n-back task for the anodal vs.  
323 sham stimulation group) with an independent t-test using a two-sided significance  
324 level of  $\alpha = 0.05$  and a power of at least 80 %, 52 participants (26 for target  
325 intervention group, 26 for control intervention group) need to be included. This  
326 conservative approach using a t-test was chosen for sample size estimation, even  
327 though we intend to analyze the primary outcome conducting an analysis of  
328 covariance (ANCOVA) model <sup>42</sup>. This monocentric clinical trial will serve to calculate  
329 sample size for a subsequent multicenter clinical trial. Sample size estimation was  
330 conducted using R software (<http://www.R-project.org>) and the pwr package  
331 (<https://cran.r-project.org/package=pwr>).

332

### 333 Recruitment

334 The participants will be recruited by the distribution of flyers at the university  
335 psychotherapy outpatient clinic (Zentrum für Psychologische Psychotherapie) and at  
336 local psychotherapeutic doctor's offices in Greifswald and surroundings.

337 Furthermore, we will search for participants via articles and announcements in the  
338 local newspaper. Telephone screenings assessing inclusion and exclusion criteria  
339 will be conducted with all potential participants and study information will be provided.  
340 Eligible participants will be invited for baseline assessment.

341

## 342 **Methods: Assignment of Interventions**

343 Allocation of the participants to the experimental groups will be performed by a  
344 researcher not involved in the study. Participants will be randomly allocated in a 1:1  
345 ratio to the two groups (anodal vs. sham tDCS). Baseline performance in the n-back  
346 task will be used as strata (two performance strata;  $\leq 87\%$  correct and  $> 87\%$   
347 correct in the n-back task). Randomization blocks with varying block sizes will be  
348 generated for each of the two stimulation groups, using R software ([https://www.R-](https://www.R-project.org)  
349 [project.org](https://www.R-project.org)) and the blockrand package ([http://CRAN.R-](http://CRAN.R-project.org/package=blockrand)  
350 [project.org/package=blockrand](http://CRAN.R-project.org/package=blockrand)). Participants will then be allocated to the anodal or  
351 sham tDCS group based on the generated randomization sequences within each  
352 block and stratum.

353

## 354 **Blinding**

355 As this is a double-blind trial, participants and investigators will be blinded regarding  
356 the stimulation condition. In the sham group the current will be applied for 30s to  
357 blind the participants to the intervention. In previous studies, sham tDCS has been  
358 shown as a safe and valid method of blinding participants<sup>43-46</sup>. At the end of the nine-  
359 session intervention, participants will be asked to state if they believe they received  
360 anodal or sham stimulation. As for the investigator blinding, a staff member who is  
361 not involved in this project will perform the randomization according to the procedure  
362 described above and provide unidentifiable labels for the two stimulation protocols  
363 (anodal, sham). The investigator involved in this study will select the protocol that  
364 corresponds to the participants ID number and will be able to apply the stimulation  
365 accordingly without knowledge of the respective stimulation condition.

## 366 Methods: Data Collection, Management, and Analysis

### 367 Data Collection Methods

368 Neuropsychological, behavioral and sleep data will be collected from each  
 369 participant. Study investigators will be thoroughly trained in administering the  
 370 assessments. Additionally, participants will receive an in-depth training on the  
 371 handling of the Actigraph so that they can adequately and safely administer the sleep  
 372 recording on their own. The questionnaires that are handed out to the participants will  
 373 be explained by an investigator and will be accompanied by additional written  
 374 instruction on how and when to complete the questionnaire. Time points and  
 375 methods of data collection are shown in **Table 1**. MRI data will be collected for  
 376 individuals participating in the “add-on” MRI study (optional) unless there are  
 377 contraindications to MRI scanning.

378

**Table 1.** *Neuromod-PCCI outcome measures.*

			Baseline	Pre	T1-T9 (3 weeks)	Post (3 days)	FU (1 month)
			~3h	~2h	~1h	~2h	~2h
Time point	Measurement	Mode	V0	V1	V2-V10	V11	V12
<b>Enrollment</b>							
Eligibility screening		Paper	x				
Informed consent		Paper	x				
Neuropsychological Screening	Demographic data	Paper	x				
	CTS <sup>30</sup>	Paper	x				
	AVLT <sup>31</sup>	Paper	x				
	Digit Span <sup>24</sup>	Paper	x				
	Stroop <sup>34</sup>	Paper	x				
	TMT A/B <sup>33</sup>	Paper	x				
	ROCF <sup>32</sup>	Paper	x				
Quality of Life	PROMIS <sup>27</sup>	Paper		x		x	x
	EORTC QLQ C30 <sup>37</sup>	Paper		x		x	x
	EORTC BR23 <sup>37</sup>	Paper		x		x	x

Sleep data	Epworth Sleepiness Scale <sup>35</sup>	Paper	x					
	Pittsburgh Sleep Quality Index <sup>38</sup>	Paper		x			x	
	Morningness-Eveningness-Questionnaire <sup>36</sup>	Paper	x					
	Actigraph	Device		x			x	
<b>Intervention</b>				↔				
Training task	Letter updating <sup>25</sup> <sub>47</sub>	Tablet-Computer	x	x	x	x	x	x
Brain stimulation	tDCS (anodal vs. sham)	Device			x			
Questionnaires	Self-reported well-being	Paper		x	x	x	x	x
	PANAS <sup>48</sup>	Paper			x			
	Adverse events questionnaire <sup>23*</sup>	Paper			x			
<b>Additional assessments</b>								
Untrained tasks	n-back (primary outcome) <sup>24</sup>	Computer		x			x	x
	Virtual reality task <sup>26</sup>	Computer		x			x	x
Physical measures	MRI, optional			x			x	
Feasibility	Adherence rates	Paper				x	x	

379 Abbreviations: T1-T9, training 1-9; FU, follow-up-assessment; V0-V12, visits 0-12; CTS, childhood trauma  
380 screener; AVLT, German version of the auditory verbal learning test; TMT A/B, trail making test A/B; ROCF, Rey-  
381 Osterrieth complex figure test; PROMIS, patient reported outcomes measurement system; EORTC QLQ  
382 C3/BR23, European organization for research and treatment of cancer, quality of life questionnaire (QLQ C30),  
383 supplemented with the extension regarding breast cancer specific quality of life (BR23); tDCS, transcranial direct  
384 current stimulation ; PANAS, positive and negative affect schedule; MRI, magnetic resonance imaging. All  
385 measures were acquired on site, except for screening which was done via telephone. \*assessed only at the end  
386 of each training week (V4, V7 and 10).

387

## 388 Neuropsychological Assessment

389 Neuropsychological tests at baseline visit (V0) comprise paper-pencil as well as  
390 computer-based assessments. Performance in several cognitive domains will be  
391 tested with the auditory verbal learning test<sup>24 31</sup>, the Digit Span<sup>24</sup>, the Stroop test<sup>24 34</sup>,  
392 the Trail Making Test A/B<sup>33</sup>, and the Rey-Osterrieth Complex Figure Test<sup>32</sup>.

393 Trained and untrained tasks include paper-pencil and computer-based assessments.  
394 Detailed description of the training task is provided in the interventions section. At  
395 pre-, post- and follow-up sessions (V1, V11 and V12) the untrained tasks will be  
396 administered: Participants will perform a numeric n-back task (1 and 2 back) and a  
397 VR navigation task <sup>26</sup>. The n-back (1-and 2-back) task will be administered as an  
398 untrained task to assess working memory function (18 trials total, 9 trials 1back and 9  
399 trials 2back with 10 items each, presentation duration 1500 ms, ISI 2500 ms). The  
400 participants will have to state for a sequence of numerical digits presented one after  
401 the other, if the stimulus that is presented currently is the same stimulus as “n”-steps  
402 back. The participants will answer via a keypress, left arrow key for “yes” if the stimuli  
403 match and right arrow key for “no” if the stimuli differ. This task requires that different  
404 brain functions are coordinated effectively including updating, discrimination and  
405 matching of the stimuli and decision making <sup>24 49</sup>. The VR task <sup>26</sup> will be administered  
406 as a untrained task. Here, during encoding, participants will be instructed to  
407 memorize a route with several targets (e. g., butcher, doctor’s office and grocery  
408 store); during subsequent recall, the participants will be asked to navigate the  
409 shortest route to given targets.

410

#### 411 [Psychological Assessment](#)

412 A variety of questionnaires will be administered over the course of the study. At  
413 baseline visit (V0) the participants will be screened for childhood maltreatment and  
414 various mental disorders via the CTS <sup>30</sup> and the DIPS <sup>29</sup>. The CTS is a 5-item  
415 questionnaire regarding experiences of neglect and abuse in childhood and  
416 adolescence. The DIPS is an established diagnostic interview which helps to  
417 thoroughly explore different possible mental diagnoses. It guides the interviewer,  
418 covering the different aspects of each disorder, the degree of symptom expression,  
419 and subsequently aids in classifying the possible mental disorders according to DSM-  
420 5.

421 At pre-, post- and follow-up assessment the following Quality of Life questionnaires  
422 will be administered:

- 423 • Patient Reported Outcomes Measure System (PROMIS®, <https://promis-germany.de/>) to assess physical, mental and social health
  - 424 • EORTC QLQC30 <sup>37</sup>, to measure QoL of cancer patients
- 425

- 426 • EORTC BR23, which is a module of the EORTC QLQ C30 and focuses on  
427 the mental and physical health of breast cancer patients

428 Simultaneously with the collection of sleep data through actigraphy, the participants  
429 will be asked to fill in three questionnaires regarding their sleep quality and rhythm.  
430 The Morningness-Eveningness-Questionnaire <sup>36</sup> and the Epworth Sleepiness Scale  
431 <sup>35</sup> will be administered at Baseline assessment, the Pittsburg Sleep Index <sup>38</sup> will be  
432 administered both at pre-and post-assessment, assessing day-time sleepiness,  
433 quality of sleep and the sleep rhythm of the participants in the last month/weeks.

434

#### 435 **Magnetic resonance imaging**

436 MRI will be acquired at the Baltic Imaging Center (Center for Diagnostic Radiology  
437 and Neuroradiology, Universitätsmedizin Greifswald) with a 3-Tesla scanner  
438 (Siemens Verio) using a 32-channel head coil, prior to the training intervention and at  
439 post-intervention. A T1-weighted 3D sequence, a 3D FLAIR, a diffusion tensor imaging  
440 (DTI), single-voxel magnetic resonance spectroscopy (MRS) and a resting-state fMRI  
441 sequence will be recorded. Additional T1- and T2-weighted structural images will be  
442 acquired with parameters optimized for computational modeling to calculate electric  
443 field distributions (simnibs.org) <sup>50 51</sup>. Seed-based resting-state functional connectivity  
444 within and between large-scale task-relevant networks (e.g., frontoparietal and default  
445 mode network) will be performed <sup>39 52 53</sup> using the CONN toolbox  
446 ([www.nitrc.org/projects/conn](http://www.nitrc.org/projects/conn)) <sup>54</sup>. White-matter pathways will be reconstructed from  
447 diffusion-weighted images using TRACULA pipeline <sup>55</sup> in Freesurfer  
448 (<http://surfer.nmr.mgh.harvard.edu/>), in order to extract tract fractional anisotropy and  
449 mean diffusivity <sup>56-59</sup>. Changes in FA and MD on whole-brain level will be analyzed  
450 using FSL's tract-based spatial statistics (TBSS, [www.fmrib.ox.ac.uk/fsl](http://www.fmrib.ox.ac.uk/fsl)) <sup>60 61</sup>. MD in  
451 gray matter will also be explored for examination of intervention-induced  
452 microstructural gray matter change <sup>62</sup>. Quantifications of metabolite concentrations  
453 (such as N-acetylaspartate, glutamate, and gamma-aminobutyric acid, among others)  
454 in the MRS voxel will be extracted using software packages in Matlab (The Mathworks  
455 Inc., Natick; MA). Segmentation on high-resolution T1 scans will be performed to  
456 assess the volume of cortical and subcortical gray matter <sup>25 63</sup> using the computational  
457 anatomy toolbox (CAT12, <http://www.neuro.unijena.de/cat/>) and Freesurfer  
458 (<http://surfer.nmr.mgh.harvard.edu/>).

459



## 460 Retention and Adherence

461 To ensure adherence and retention throughout the entire study period, participants  
462 will be contacted regularly via telephone or email and will be provided with information  
463 about their appointments. A few days prior to the intervention, a member of the study  
464 team will call the participant to remind them of the upcoming appointments and to  
465 check if there are any open questions to address. Additionally, the participants will be  
466 provided with a document listing all their appointments with notes regarding parking  
467 and caffeine consumption at pre-assessment. At the end of each visit, the participants  
468 will be reminded of the date and time of the next session. Throughout the whole study  
469 period participants will be encouraged to contact the 24/7 study answer machine if  
470 questions or concerns arise. Similarly, they will be prompted to leave a voice message  
471 if they are unable to attend or wish to reschedule a session. They then will be  
472 contacted to discuss alternative scheduling or to address possible questions and  
473 concerns. At the end of the study, participants will receive a reasonable financial  
474 reimbursement (approximately 10 € per hour) and the results of their  
475 neuropsychological screening and, if they underwent MRI scanning, their structural  
476 MRI images on a compact disc. If complete adherence to the protocol is not possible,  
477 any effort to collect as much data as possible will be made.

478

## 479 Data Management and Monitoring

480 All participant data will be pseudonymized. Spreadsheets containing both participant  
481 IDs and personal data will be protected with a password only known to the study staff  
482 and will be stored on a secure file server. Similarly, digital data, i.e. output files from  
483 computer-based tasks, will be saved on a secure file server directly after acquisition.  
484 Non-digitally acquired data will be manually digitalized by a staff member of the  
485 research team and double-checked by another member. Progress of data entry and  
486 checking procedures will be documented. Files containing subject records will be  
487 sorted by participant ID and stored securely. Sensitive data, such as names and  
488 medical records, will be stored separately in lockable cabinets in rooms with access  
489 restricted to the researchers. Protocols of the tDCS setup of each participant and  
490 session will also be stored on the file server and MRI data will be pseudonymized  
491 before analysis. Following good scientific practice, data will be stored for at least 10  
492 years.

## 493 Adverse Events Monitoring

494 Safety and tolerability will be assessed through monitoring any potentially occurring  
495 adverse events (AEs) via an adverse events questionnaire <sup>23</sup>, administered at the  
496 end of each training week (V4, V7 and V10). We will refrain from administering the  
497 AE questionnaire at every visit, since this would possibly draw the participant's  
498 attention to minor sensations during the stimulation and would only serve as a  
499 distraction from the training task. Generally, adverse events during tDCS are rare  
500 and minimal. Known AEs with the applied stimulation parameters (20min, 2mA) are  
501 skin reddening, a tingling sensation under the electrode sites and occasionally a mild  
502 headache <sup>23</sup>. As we will be using a local anesthetic under the electrode sites, we  
503 expect even less noticeable sensations <sup>64 65</sup>. Investigators will be instructed to  
504 monitor AEs and serious AEs (SAEs) throughout the study and document all  
505 detected AEs and SAEs. Participants will be informed at baseline assessment about  
506 all possible AEs and risks and can withdraw their consent at any time without  
507 providing reason. In case a SAE occurs, the study physician will first make an  
508 assessment as to whether a causal relationship with the intervention is considered  
509 plausible. If more than three of the enrolled participants suffer from SAEs likely to be  
510 associated with the intervention (as assessed by the study physician), the trial will be  
511 discontinued.

## 512 Statistical Methods

513 The primary outcome, percent of correct responses in the n-back task at post-  
514 compared to the pre-training assessment will be analyzed using ANCOVA with post-  
515 assessment n-back performance as dependent variable, pre-assessment n-back  
516 performance as covariate, and group allocation (target intervention (n=26) vs. control  
517 intervention (n=26)) as independent variable. Linear mixed models will be conducted  
518 for secondary outcomes with experimental group as between-subjects factor. All  
519 models will be corrected for age and performance at pre-assessment. We will use  
520 random intercept models that account for the clustering of measures within  
521 individuals. In case of violation of requirements for parametric methods, data will be  
522 transformed before analysis. Analyses of primary and secondary outcomes will be  
523 reported in detail in the statistical analysis plan to be written and registered before  
524 unblinding of investigators performing the analyses. Confirmatory analysis of  
525 treatment effects will be conducted within an intention to treat (ITT) framework with

526 multiple imputed data sets in case of missing data (under the assumption of missing  
527 completely at random or missing at random). Further as sensitivity analyses, we will  
528 perform “per protocol” analyses, including only those participants who finished post-  
529 assessment. Feasibility data (% drop-out rate and number of attended training  
530 sessions per participant) will be analyzed using descriptive statistics. Data  
531 distributions of the feasibility questionnaire items will be visually assessed for  
532 normality using q-q plots, and statistically using the Shapiro-Wilk test<sup>66 67</sup>.  
533 Data analysis will be conducted using IBM SPSS Statistics for Windows (IBM Corp.,  
534 Armonk, NY), MatLab (The Mathworks Inc., 2016), and R software ([https://www.R-  
535 project.org](https://www.R-project.org)).

536

### 537 Patient and public involvement

538 We will conduct a brief semi-structured interview at the last visit (V12) to assess the  
539 patients’ satisfaction with the trial and answer any upcoming questions. The patients  
540 were not involved in designing the intervention. All patients will be informed about the  
541 study details (e.g. the experimental group they participated in) upon completion of the  
542 study.

### 543 Ethics and Dissemination

544 The study was approved by the ethics committee of the University Medicine of  
545 Greifswald and will be conducted in accordance with the Helsinki Declaration. All  
546 data collected will be pseudonymized. Results of the study will be made accessible to  
547 scientific researchers and health care professionals via publications in peer reviewed  
548 journals and presentations at national and international conferences. Furthermore,  
549 the scientific and lay public can access the study results on the ClinicalTrials.gov  
550 website (Identifier: NCT04817566).

### 551 Conclusion

552 With this trial, we will for the first time investigate the immediate and long-term effects  
553 as well as the feasibility, safety and tolerability of a combined training and brain  
554 stimulation intervention on trained (working memory) performance and transfer to  
555 other domains as well as on health-related quality of life in patients with post-  
556 chemotherapy cognitive impairment. The results of this trial will contribute to the  
557 development of non-invasive interventions for a condition affecting everyday lives of  
558 many breast cancer patients.

559 **Protocol amendments**

560 Any substantial amendment to the study protocol will be submitted to the Institutional  
561 Ethics Committee for review and approval.

562 **Consent or assent**

563 A member of the investigational team (study coordinator or study assessor) will  
564 collect written informed consent during study enrollment after having reviewed the  
565 participant information sheet, participant's questions, and study inclusion and  
566 exclusion criteria.

567 **Confidentiality**

568 The collected data will be treated as confidential. Direct access to personal  
569 information and source data documentation will only be given to study monitors,  
570 study assessors, and the research team.

571 **Availability of data and materials**

572 Anonymized data will be made available to the scientific community upon request.

573 **Ethics approval and consent to participate**

574 This study was approved by the ethics committee of the University Medicine  
575 Greifswald, Germany (BB236/20), date of first approval: 5 January 2021). All  
576 procedures conducted during the Neuromod-PCCI trial will be carried out in  
577 compliance with the Declaration of Helsinki.

578 **Authors' Contributions:** AF, DA, and ELB conceptualized and designed this trial.  
579 AF and DA are supervising its implementation. AEF and DA are implementing the  
580 trial and supervising its conduct. MR, NJ and EK are performing recruitment and  
581 assessments. MR, EK, and FT drafted the study protocol. UG, DA and AEF will be  
582 performing statistical analyses. All authors will be contributing to the interpretation of  
583 the data. All authors read and revised the original draft and consecutive versions of  
584 the manuscript. All authors read and approved the final version of the study protocol.

585 **Competing interests**

586 The authors declare no actual or potential conflicts of interest.

587 **Funding**

588 The authors have not declared a specific grant for this research from any funding  
589 agency.

590

591 **References**

- 592 1. Kaplan HG, Malmgren JA, Atwood MK, et al. Effect of treatment and  
593 mammography detection on breast cancer survival over time: 1990-2007:  
594 Improved Breast Ca Survival Over Time. *Cancer* 2015;121(15):2553-61. doi:  
595 10.1002/cncr.29371
- 596 2. Mounier NM, Abdel-Maged AE-S, Wahdan SA, et al. Chemotherapy-induced  
597 cognitive impairment (CICI): An overview of etiology and pathogenesis. *Life*  
598 *Sciences* 2020;258:118071. doi: 10.1016/j.lfs.2020.118071
- 599 3. Vitali M, Ripamonti CI, Roila F, et al. Cognitive impairment and chemotherapy: a  
600 brief overview. *Critical Reviews in Oncology/Hematology* 2017;118:7-14. doi:  
601 10.1016/j.critrevonc.2017.08.001
- 602 4. Collins B, MacKenzie J, Tasca GA, et al. Cognitive effects of chemotherapy in  
603 breast cancer patients: a dose-response study. *Psycho-Oncology*  
604 2013;22(7):1517-27. doi: 10.1002/pon.3163
- 605 5. Boykoff N, Moieni M, Subramanian SK. Confronting chemobrain: an in-depth look  
606 at survivors' reports of impact on work, social networks, and health care  
607 response. *Journal of Cancer Survivorship* 2009;3(4):223. doi:  
608 10.1007/s11764-009-0098-x
- 609 6. Reid-Arndt SA, Yee A, Perry MC, et al. Cognitive and Psychological Factors  
610 Associated with Early Posttreatment Functional Outcomes in Breast Cancer  
611 Survivors. *Journal of Psychosocial Oncology* 2009;27(4):415-34. doi:  
612 10.1080/07347330903183117
- 613 7. Von Ah D, Habermann B, Carpenter JS, et al. Impact of perceived cognitive  
614 impairment in breast cancer survivors. *European Journal of Oncology Nursing*  
615 2013;17(2):236-41. doi: 10.1016/j.ejon.2012.06.002
- 616 8. Wefel JS, Kesler SR, Noll KR, et al. Clinical characteristics, pathophysiology, and  
617 management of noncentral nervous system cancer-related cognitive  
618 impairment in adults: Cancer-Related Cognitive Impairment. *CA: A Cancer*  
619 *Journal for Clinicians* 2015;65(2):123-38. doi: 10.3322/caac.21258
- 620 9. Han R, Yang YM, Dietrich J, et al. Systemic 5-fluorouracil treatment causes a  
621 syndrome of delayed myelin destruction in the central nervous system. *Journal*  
622 *of biology* 2008;7(4):12. doi: 10.1186/jbiol69 [published Online First:  
623 2008/04/24]
- 624 10. Seigers R, Schagen SB, Van Tellingen O, et al. Chemotherapy-related cognitive  
625 dysfunction: current animal studies and future directions. *Brain imaging and*  
626 *behavior* 2013;7(4):453-9. doi: 10.1007/s11682-013-9250-3 [published Online  
627 First: 2013/08/21]
- 628 11. Poppelreuter M, Weis J, Bartsch HH. Effects of Specific Neuropsychological  
629 Training Programs for Breast Cancer Patients After Adjuvant Chemotherapy.  
630 *Journal of Psychosocial Oncology* 2009;27(2):274-96. doi:  
631 10.1080/07347330902776044
- 632 12. Von Ah D, Carpenter JS, Saykin A, et al. Advanced cognitive training for breast  
633 cancer survivors: a randomized controlled trial. *Breast Cancer Research and*  
634 *Treatment* 2012;135(3):799-809. doi: 10.1007/s10549-012-2210-6
- 635 13. Kesler S, Hadi Hosseini SM, Heckler C, et al. Cognitive training for improving  
636 executive function in chemotherapy-treated breast cancer survivors. *Clin*  
637 *Breast Cancer* 2013;13(4):299-306. doi: 10.1016/j.clbc.2013.02.004 [published  
638 Online First: 2013/05/08]
- 639 14. Park DC, Bischof GN. The aging mind: neuroplasticity in response to cognitive  
640 training. *Dialogues in Clinical Neuroscience* 2013;15(1):109-19.

- 641 15. Filmer HL, Dux PE, Mattingley JB. Applications of transcranial direct current  
642 stimulation for understanding brain function. *Trends in Neurosciences*  
643 2014;37(12):742-53. doi: 10.1016/j.tins.2014.08.003
- 644 16. Stagg CJ, Nitsche MA. Physiological basis of transcranial direct current  
645 stimulation. *The Neuroscientist: A Review Journal Bringing Neurobiology,*  
646 *Neurology and Psychiatry* 2011;17(1):37-53. doi: 10.1177/1073858410386614
- 647 17. Brem A-K, Ran K, Pascual-Leone A. Learning and memory. *Handbook of Clinical*  
648 *Neurology* 2013;116:693-737. doi: 10.1016/B978-0-444-53497-2.00055-3
- 649 18. Prehn K, Flöel A. Potentials and limits to enhance cognitive functions in healthy  
650 and pathological aging by tDCS. *Frontiers in Cellular Neuroscience* 2015;9  
651 doi: 10.3389/fncel.2015.00355
- 652 19. Zimmerman M, Nitsch M, Giroux P, et al. Neuroenhancement of the aging brain:  
653 Restoring skill acquisition in old subjects. *Annals of Neurology* 2013;73(1):10-  
654 15. doi: 10.1002/ana.23761
- 655 20. Chan A-W, Tetzlaff JM, Altman DG, et al. SPIRIT 2013 statement: defining  
656 standard protocol items for clinical trials. *Annals of internal medicine*  
657 2013;158(3):200-07.
- 658 21. Chan A-W, Tetzlaff JM, Gøtzsche PC, et al. SPIRIT 2013 explanation and  
659 elaboration: guidance for protocols of clinical trials. *Bmj* 2013;346:e7586.
- 660 22. Association AP. Diagnostic and Statistical Manual of Mental Disorders. Fifth  
661 Edition ed: American Psychiatric Association 2013.
- 662 23. Antal A, Alekseichuk I, Bikson M, et al. Low intensity transcranial electric  
663 stimulation: Safety, ethical, legal regulatory and application guidelines. *Clinical*  
664 *Neurophysiology* 2017;128(9):1774-809. doi:  
665 <https://doi.org/10.1016/j.clinph.2017.06.001>
- 666 24. Lezak MD, Howieson DB, Bigler ED, et al. Neuropsychological Assessment. 5th  
667 edition ed. Oxford ; New York: Oxford University Press 2012.
- 668 25. Dahlin E, Neely AS, Larsson A, et al. Transfer of learning after updating training  
669 mediated by the striatum. *Science (New York, NY)* 2008;320(5882):1510-2.  
670 doi: 10.1126/science.1155466 [published Online First: 2008/06/17]
- 671 26. Hartley T, Maguire EA, Spiers HJ, et al. The Well-Worn Route and the Path Less  
672 Traveled. *Neuron* 2003;37(5):877-88. doi: 10.1016/s0896-6273(03)00095-3
- 673 27. Cella D, Choi SW, Condon DM, et al. PROMIS® adult health profiles: efficient  
674 short-form measures of seven health domains. *Value in health*  
675 2019;22(5):537-44.
- 676 28. Lewis JR. Psychometric Evaluation of the PSSUQ Using Data from Five Years of  
677 Usability Studies. *International Journal of Human-Computer Interaction*  
678 2002;14(3-4):463-88. doi: 10.1080/10447318.2002.9669130
- 679 29. Margraf J, Cwik JC, Suppiger A, et al. DIPS Open Access: Diagnostisches  
680 Interview bei psychischen Störungen. 2017 doi: 10.13154/RUB.100.89
- 681 30. Grabe H, Schulz A, Schmidt C, et al. Ein Screeninginstrument für Missbrauch  
682 und Vernachlässigung in der Kindheit: der Childhood Trauma Screener (CTS).  
683 *Psychiatrische Praxis* 2012;39(03):109-15. doi: 10.1055/s-0031-1298984
- 684 31. Helmstaedter C, Lendt M, Lux S. Verbaler Lern-und Merkfähigkeitstest: VLMT;  
685 Manual: Beltz-Test 2001.
- 686 32. Meyers JE, Meyers KR. Rey Complex Figure Test and Recognition Trial. 1.  
687 Auflage ed. Göttingen: Hogrefe 1995.
- 688 33. Strauss E, Sherman EMS, Spreen O. A Compendium of Neuropsychological  
689 Tests: Administration, Norms, and Commentary. 3. Edition ed. Oxford ; New  
690 York: Oxford University Press 2006.

- 691 34. Stroop JR. Studies of interference in serial verbal reactions. *Journal of*  
692 *experimental psychology* 1935;18(6):643.
- 693 35. Johns MW. A New Method for Measuring Daytime Sleepiness: The Epworth  
694 Sleepiness Scale. *Sleep* 1991;14(6):540-45. doi: 10.1093/sleep/14.6.540
- 695 36. Horne JA, Ostberg O. A self-assessment questionnaire to determine  
696 morningness-eveningness in human circadian rhythms. *International Journal*  
697 *of Chronobiology* 1976;4(2):97-110.
- 698 37. Fayers P, Bottomley A. Quality of life research within the EORTC—the EORTC  
699 QLQ-C30. *European Journal of Cancer* 2002;38:125-33. doi: 10.1016/S0959-  
700 8049(01)00448-8
- 701 38. Buysse DJ, Reynolds CF, Monk TH, et al. The Pittsburgh sleep quality index: A  
702 new instrument for psychiatric practice and research. *Psychiatry Research*  
703 1989;28(2):193-213. doi: 10.1016/0165-1781(89)90047-4
- 704 39. Antonenko D, Kulzow N, Sousa A, et al. Neuronal and behavioral effects of multi-  
705 day brain stimulation and memory training. *Neurobiology of aging*  
706 2018;61:245-54. doi: 10.1016/j.neurobiolaging.2017.09.017 [published Online  
707 First: 2017/10/21]
- 708 40. Park SH, Seo JH, Kim YH, et al. Long-term effects of transcranial direct current  
709 stimulation combined with computer-assisted cognitive training in healthy older  
710 adults. *Neuroreport* 2014;25(2):122-6. doi: 10.1097/WNR.0000000000000080  
711 [published Online First: 2013/11/02]
- 712 41. Jones K, Stephens J, Alam M, et al. Longitudinal neurostimulation in older adults  
713 improves working memory. *PloS one* 2015; 10(4).  
714 [https://www.cochranelibrary.com/central/doi/10.1002/central/CN-](https://www.cochranelibrary.com/central/doi/10.1002/central/CN-01215335/full)  
715 [01215335/full](https://www.cochranelibrary.com/central/doi/10.1002/central/CN-01215335/full).
- 716 42. Borm GF, Fransen J, Lemmens WA. A simple sample size formula for analysis of  
717 covariance in randomized clinical trials. *Journal of clinical epidemiology*  
718 2007;60(12):1234-38.
- 719 43. Floel A, Cohen LG. Recovery of function in humans: Cortical stimulation and  
720 pharmacological treatments after stroke. *Neurobiology of Disease*  
721 2010;37(2):243-51. doi: 10.1016/j.nbd.2009.05.027
- 722 44. Gandiga PC, Hummel FC, Cohen LG. Transcranial DC stimulation (tDCS): A tool  
723 for double-blind sham-controlled clinical studies in brain stimulation. *Clinical*  
724 *Neurophysiology* 2006;117(4):845-50. doi:  
725 <https://doi.org/10.1016/j.clinph.2005.12.003>
- 726 45. Kuo HI, Bikson M, Datta A, et al. Comparing cortical plasticity induced by  
727 conventional and high-definition 4 × 1 ring tDCS: a neurophysiological study.  
728 *Brain stimulation* 2013;6(4):644-8. doi: 10.1016/j.brs.2012.09.010 [published  
729 Online First: 2012/11/15]
- 730 46. Schlaug G, Renga V. Transcranial direct current stimulation: a noninvasive tool to  
731 facilitate stroke recovery. *Expert review of medical devices* 2008;5(6):759-68.
- 732 47. Passow S, Thurm F, Li S-C. Activating Developmental Reserve Capacity Via  
733 Cognitive Training or Non-invasive Brain Stimulation: Potentials for Promoting  
734 Fronto-Parietal and Hippocampal-Striatal Network Functions in Old Age.  
735 *Frontiers in Aging Neuroscience* 2017;9:33. doi: 10.3389/fnagi.2017.00033
- 736 48. Watson D, Clark LA, Tellegen A. Development and validation of brief measures  
737 of positive and negative affect: the PANAS scales. *Journal of personality and*  
738 *social psychology* 1988;54(6):1063.
- 739 49. Sweet LH. N-Back Paradigm. In: Kreutzer JS, DeLuca J, Caplan B, eds.  
740 *Encyclopedia of Clinical Neuropsychology*. New York, NY: Springer  
741 2011:1718-19.

- 742 50. Windhoff M, Opitz A, Thielscher A. Electric field calculations in brain stimulation  
743 based on finite elements: an optimized processing pipeline for the generation  
744 and usage of accurate individual head models. *Human brain mapping*  
745 2013;34(4):923-35.
- 746 51. Field modeling for transcranial magnetic stimulation: A useful tool to understand  
747 the physiological effects of TMS? 2015 37th Annual International Conference  
748 of the IEEE Engineering in Medicine and Biology Society (EMBC); 2015 25-29  
749 Aug. 2015.
- 750 52. Antonenko D, Hayek D, Netzband J, et al. tDCS-induced episodic memory  
751 enhancement and its association with functional network coupling in older  
752 adults. *Scientific Reports* 2019;9 doi: 10.1038/s41598-019-38630-7
- 753 53. Darki F, Klingberg T. The role of fronto-parietal and fronto-striatal networks in the  
754 development of working memory: a longitudinal study. *Cereb Cortex*  
755 2015;25(6):1587-95. doi: 10.1093/cercor/bht352 [published Online First:  
756 2014/01/15]
- 757 54. Whitfield-Gabrieli S, Nieto-Castanon A. Conn: a functional connectivity toolbox for  
758 correlated and anticorrelated brain networks. *Brain connectivity* 2012;2(3):125-  
759 41.
- 760 55. Yendiki A, Panneck P, Srinivasan P, et al. Automated probabilistic reconstruction  
761 of white-matter pathways in health and disease using an atlas of the  
762 underlying anatomy. *Frontiers in neuroinformatics* 2011;5:23.
- 763 56. Le Bihan D, Johansen-Berg H. Diffusion MRI at 25: exploring brain tissue  
764 structure and function. *Neuroimage* 2012;61(2):324-41.
- 765 57. Metzler-Baddeley C, Jones DK, Belaroussi B, et al. Frontotemporal connections  
766 in episodic memory and aging: a diffusion MRI tractography study. *Journal of*  
767 *Neuroscience* 2011;31(37):13236-45.
- 768 58. Metzler-Baddeley C, Foley S, de Santis S, et al. Dynamics of White Matter  
769 Plasticity Underlying Working Memory Training: Multimodal Evidence from  
770 Diffusion MRI and Relaxometry. *J Cogn Neurosci* 2017;29(9):1509-20. doi:  
771 doi:10.1162/jocn\_a\_01127 [published Online First: 2017/03/31]
- 772 59. Charlton RA, Barrick TR, Lawes INC, et al. White matter pathways associated  
773 with working memory in normal aging. *Cortex* 2010;46(4):474-89.
- 774 60. Jenkinson M, Beckmann CF, Behrens TE, et al. Fsl. *Neuroimage* 2012;62(2):782-  
775 90.
- 776 61. Smith SM, Jenkinson M, Woolrich MW, et al. Advances in functional and  
777 structural MR image analysis and implementation as FSL. *Neuroimage*  
778 2004;23:S208-S19.
- 779 62. Brodt S, Gais S, Beck J, et al. Fast track to the neocortex: A memory engram in  
780 the posterior parietal cortex. *Science (New York, NY)* 2018;362(6418):1045-  
781 48.
- 782 63. Filmer HL, Ehrhardt SE, Shaw TB, et al. The efficacy of transcranial direct current  
783 stimulation to prefrontal areas is related to underlying cortical morphology.  
784 *NeuroImage* 2019;196:41-48. doi: 10.1016/j.neuroimage.2019.04.026
- 785 64. Guarienti F, Caumo W, Shiozawa P, et al. Reducing transcranial direct current  
786 stimulation-induced erythema with skin pretreatment: considerations for sham-  
787 controlled clinical trials. *Neuromodulation: Journal of the International*  
788 *Neuromodulation Society* 2015;18(4):261-65. doi: 10.1111/ner.12230
- 789 65. McFadden JL, Borckardt JJ, George MS, et al. Reducing Procedural Pain and  
790 Discomfort Associated with Transcranial Direct Current Stimulation. *Brain*  
791 *stimulation* 2011;4(1):38-42. doi: 10.1016/j.brs.2010.05.002



- 792 66. Rahbek MA, Mikkelsen EE, Overgaard K, et al. Exercise in myasthenia gravis: A  
793 feasibility study of aerobic and resistance training. *Muscle & Nerve*  
794 2017;56(4):700-09. doi: <https://doi.org/10.1002/mus.25552>  
795 67. Bock BC, Thind H, Fava JL, et al. Feasibility of yoga as a complementary therapy  
796 for patients with type 2 diabetes: The Healthy Active and in Control (HA1C)  
797 study. *Complement Ther Med* 2019;42:125-31. doi:  
798 10.1016/j.ctim.2018.09.019 [published Online First: 2018/09/26]  
799