

1 **Behaviour change interventions improve maternal and child nutrition in sub-Saharan Africa: a systematic**  
2 **review**

3 **Short title: Behaviour change maternal and child nutrition interventions**

4 Daniella Watson MSc<sup>1</sup>, Patience Mushamiri MA, MPH<sup>2</sup>, Paula Beerl MSc<sup>3</sup>, Toussaint Rouamba PhD<sup>4</sup>, Sarah  
5 Jenner MSc<sup>5</sup>, Sarah H Kehoe PhD<sup>1,5</sup>, Kate A Ward PhD<sup>1,5,6</sup>, Mary Barker PhD<sup>5,6,7,8</sup>, Wendy Lawrence PhD<sup>5,7</sup>  
6 and the INPreP Study Group

7

8 <sup>1</sup>Global Health Research Institute, Human Development and Health, Faculty of Medicine, University of  
9 Southampton, United Kingdom

10 <sup>2</sup>SAMRC Centre for Health Economics and Decision Science, PRICELESS, University of the Witwatersrand,  
11 School of Public Health, Faculty of Health Sciences, Johannesburg South Africa

12 <sup>3</sup>Navrongo Health Research Centre, Ghana Health Service, Ghana

13 <sup>4</sup>Clinical Research Unit of Nanoro, Institute for Research in Health Sciences, National Center for Scientific and  
14 Technological Research, 42, Avenue Kumda-Yoore, BP 218 Ouagadougou CMS 11, Burkina Faso

15 <sup>5</sup>Medical Research Council Lifecourse Epidemiology Centre, University of Southampton, United Kingdom

16 <sup>6</sup>School of Public Health, Faculty of Health Sciences, University of the Witwatersrand, Johannesburg, South  
17 Africa

18 <sup>7</sup>NIHR Southampton Biomedical Research Centre, University Hospitals Southampton NHS Foundation Trust,  
19 United Kingdom

20 <sup>8</sup>School of Health Sciences, Faculty of Life and Environmental Sciences, University of Southampton, United  
21 Kingdom

22 **Corresponding author:** Daniella Watson, email address: [d.watson@soton.ac.uk](mailto:d.watson@soton.ac.uk), phone number:

23 07858652079, Address: D08 Institute of Developmental Science, University Hospitals Southampton NHS

24 Foundation Trust, United Kingdom

25 **Abstract**

26 **Background:**

27 Evidence that nutrition-specific and nutrition-sensitive interventions can improve maternal and child  
28 nutrition status in sub-Saharan Africa is inconclusive. Using behaviour change theory and techniques in  
29 intervention design may increase effectiveness and make outcomes more predictable. This systematic  
30 review aimed to determine whether interventions that included behaviour change functions were  
31 effective.

32 **Methods:**

33 Six databases were searched systematically, using MeSH and free-text terms, for articles describing  
34 nutrition-specific and nutrition-sensitive behaviour change interventions published in English until January  
35 2022. Titles, abstracts and full-text papers were double-screened. Data extraction and quality assessments  
36 followed Centre for Reviews and Dissemination guidelines. Behaviour change functions of interventions  
37 were mapped onto the COM-B model and Behaviour Change Wheel. PROSPERO registered (135054).

38 **Findings:**

39 The search yielded 1149 articles: 71 articles met inclusion criteria, ranging from low (n=30) to high (n=11)  
40 risk of bias. Many that applied behaviour change theory, communication or counselling resulted in  
41 significant improvements in infant stunting and wasting, household dietary intake and maternal  
42 psychosocial measures. Interventions with >2 behaviour change functions (including persuasion,  
43 incentivisation, environmental restructuring) were the most effective.

44 **Interpretation:** We recommend incorporating behaviour change functions in nutrition interventions to  
45 improve maternal and child outcomes, specifically drawing on the Behaviour Change Wheel, COM-B model.  
46 To enhance the designs of these interventions, and ultimately improve the nutritional and psychosocial

47 outcomes for mothers and infants in sub-Saharan Africa, collaborations are recommended between  
48 behaviour change and nutrition experts, intervention designers, policy makers and commissioners to fund  
49 and roll-out multicomponent behaviour change interventions.

50 **Key words:** Behaviour Change Wheel, COM-B model Maternal and Child nutrition, sub-Saharan Africa,  
51 systematic review

## 52 **Background**

53 The triple burden of malnutrition<sup>(1)</sup>, coexistence of under- and over-nutrition<sup>(2)</sup> and poor  
54 micronutrient status impacts maternal and child health<sup>(3-6)</sup>. In sub-Saharan Africa this occurs at the  
55 household level, where family members can be underweight (BMI<18.5kg/m<sup>2</sup>)<sup>(7)</sup> or overweight  
56 (BMI>25kg/m<sup>2</sup>)<sup>(7)</sup>, and at the individual level, where an infant can be stunted (height for age < -2 SD  
57 from the median)<sup>(7)</sup>, wasted (weight for age <-2SD from the median)<sup>(7)</sup> or overweight<sup>(8)</sup>. One meta-  
58 analysis found that rural residency, low educational status of partners, multiple pregnancies and  
59 poor nutritional indicators were determinants of malnutrition in pregnancy<sup>(9)</sup>. A recent Lancet  
60 series<sup>(3-6, 10-17)</sup> advocated for person-centred health systems and proposed a lifecourse double-duty  
61 approach to optimise dietary quality to address both under- and over-nutrition<sup>(11-14)</sup>. They advise  
62 using both “nutrition-specific” and “nutrition-sensitive” interventions<sup>(3-6)</sup>. Large-scale nutrition-  
63 sensitive interventions (agriculture, clean water, sanitation, education and employment) may  
64 enhance nutrition-specific interventions (breastfeeding promotion, fortification of foods, and  
65 micronutrient supplementation) by addressing underlying determinants of nutrition<sup>(5, 18)</sup>.  
66 Approaches to improve infant nutrition status include 1) promotion of individual behaviour change  
67 to address diet quality, 2) food fortification, 3) nutritional supplementation<sup>(18-20)</sup>.  
68 Behavioural functions of interventions are increasingly recognised as crucial, yet expertise in global  
69 health behaviour change is lacking<sup>(21)</sup>. Shelton (2013) described behaviour change as the missing  
70 block in global health systems, pointing out that the top 20 health risks (e.g. obesity, childhood  
71 underweight, vitamin deficiencies) in sub-Saharan Africa are influenced by behaviour (e.g. care  
72 seeking, adherence, pro-social behaviours)<sup>(21)</sup>. Public health and health promotion interventions  
73 based on social and behavioural science theories are more effective than interventions without such  
74 a theoretical base<sup>(22)</sup>. Further, a lack of theory-informed evaluations limits what can be learnt about  
75 how interventions work in different contexts, how health impacts are observed, and effects on  
76 primary and secondary outcomes<sup>(23-25)</sup>.

77 Research suggests that intervention strategies must combine behaviour change with access to  
78 nutritious food<sup>(26)</sup>, acknowledging that people eat ‘food’ rather than ‘nutrients’<sup>(27)</sup>. Behavioural  
79 scientists argue that behaviour change interventions should engage with the target population,  
80 understand their motivation to change, and adapt to the contexts that facilitate change including  
81 environment and social networks<sup>(26)</sup>. The Behaviour Change Wheel (Figure 1) encapsulates features  
82 applicable to intervention design and implementation<sup>(28)</sup>. It outlines nine behavioural intervention  
83 functions and seven policy categories. It also includes three underlying human factors – **C**apability  
84 (physical and psychological), **O**pportunity (physical and social), and **M**otivation (automatic and  
85 reflective) that influence **B**ehaviour (COM-B model) (Figure 2). Both models can be applied to inform  
86 the design of interventions to improve maternal and child nutrition in the context into which they  
87 are being implemented.

88 A systematic review was undertaken to collate evidence to answer the following questions: 1) are  
89 nutrition-specific and nutrition-sensitive interventions effective in improving maternal and child  
90 nutrition in sub-Saharan Africa if they include behaviour change intervention functions? 2) which  
91 functions of behaviour change interventions are associated with improvements in maternal and child  
92 nutrition outcomes?

93 Figure 1. Behaviour Change Wheel (Michie et al, 2011)<sup>(28)</sup>

94 Figure 2. The COM-B model (Capability, Motivation, Opportunity – Behaviour) (Michie et al, 2011)<sup>(28)</sup>

## 95 **Materials and Method**

### 96 **Search strategy and study selection**

97 This systematic review follows the Centre for Reviews and Dissemination<sup>(29)</sup> and PRISMA  
98 guidelines<sup>(30, 31)</sup>. It is PROSPERO registered (135054). Articles were systematically searched for on  
99 major medical and social science databases including Cochrane library, EMBASE, MEDLINE,  
100 PSYCHINFO, CINAHL and African Journal OnLine (AJOL) published up to 24<sup>th</sup> January 2022. The search  
101 strategy was based on the most prevalent behaviour change concepts and theories identified by  
102 Davis et al (2015)<sup>(32)</sup>. Nutrition-specific and nutrition-sensitive interventions, and maternal and child  
103 nutrition terms were derived from the 2013 Lancet series on Maternal and Child Nutrition<sup>(4, 5)</sup> and in  
104 consultation with experts. The terms were entered into the databases using a combination of  
105 Medical Subject Headings (MeSH) and free text to include behaviour change interventions for  
106 maternal and child nutrition in sub-Saharan Africa (Appendix A). The terms were based on English  
107 and American spelling and were not translated into other languages. French articles were identified  
108 from the database search and were reviewed by a French speaking screener working on this review.  
109 As French articles were already included in our search, it was decided not to also translate the  
110 search terms into French. This may be a limitation as some French and other language articles might  
111 not have been identified. Further studies were sought by hand-searching bibliographies of included  
112 studies, tracking citations on Google Scholar, and asking experts on the topic. Breastfeeding  
113 interventions were excluded as there have been previous systematic reviews on this topic, which  
114 incidentally conclude that evidence for including behaviour change in breastfeeding and  
115 complimentary feeding interventions is lacking<sup>(33, 34)</sup>.

116 Publications were stored in Endnote X9.2, duplications were removed and papers were screened on  
117 Rayyan qcri online website<sup>(35)</sup>. Paper titles, abstracts and full text were double-screened. Inclusion  
118 criteria can be found in Table 1 and Appendix B. Full texts were also screened against the Behaviour  
119 Change Wheel intervention functions<sup>(28)</sup> (Appendix C) to only include interventions that had a

120 behaviour change component. Discrepancies were resolved by team review, which was deemed the  
121 final consensus.

122 Table 1. Systematic review inclusion and exclusion criteria

	<b>Inclusion criteria</b>	<b>Exclusion criteria</b>
<b>Publication type</b>	Journal articles	Protocols Commentary articles Conference papers Abstracts Theses
<b>Study design</b>	Interventional studies with or without control group Experimental or quasi-experimental design Primary data collection Qualitative evaluations of an intervention	Observational studies Qualitative methodologies to explore perceptions of nutrition Demographic surveillance to investigate nutrition status
<b>Population</b>	At least one of the following populations living in sub-Saharan Africa: <ul style="list-style-type: none"> <li>- women of child-bearing age (preconception), including adolescents</li> <li>- pregnant women</li> <li>- fathers</li> <li>- infants, children and adolescents</li> </ul>	Populations living outside sub-Saharan Africa Expats living in sub-Saharan Africa
<b>Interventions</b>	Nutrition related behaviour change interventions	Solely breastfeeding or complimentary feeding interventions Non-behaviour change interventions Non-nutrition interventions solely focused on <ul style="list-style-type: none"> <li>- HIV/AIDS,</li> <li>- malaria</li> <li>- other infectious diseases</li> </ul>
<b>Outcomes</b>	At least one of the following outcomes for: <ul style="list-style-type: none"> <li>- Body composition, nutrient intake, dietary patterns</li> <li>- Health outcomes including physical and psychological</li> <li>- Behavioural or psychosocial outcomes related to nutrition</li> <li>- Short- and long-term outcomes</li> </ul>	

123

124 **Study quality assessment and data extraction**

125 The interventions identified were mixed methods and heterogeneous and therefore a meta-analysis  
126 was not deemed appropriate. A quality assessment tool was adapted from a systematic review on  
127 digital interventions using mixed methods and tailored for use in this review (Appendix D &



128 Appendix E)<sup>(36)</sup>, based on the Centre for Reviews and Dissemination quality assessment criteria<sup>(29)</sup>.  
129 Papers were assessed for risk of bias by two reviewers independently (Table 2). Scores between -4  
130 and 4 indicated a medium risk of bias. Scores below - 4 and above 4 indicated a high and low risk of  
131 bias respectively.

### 132 **Data analysis**

133 Study designs were coded using an established method<sup>(37)</sup> based on the functions from the  
134 Behaviour Change Wheel and coded to the COM-B model<sup>(28)</sup>. It is a well-evidenced behaviour change  
135 framework and this type of analysis has been carried out in other research projects<sup>(28)</sup>. Findings are  
136 described using a narrative synthesis approach<sup>(38)</sup>.

### 137 **Results**

138 1149 papers were identified leaving 963 studies after duplicates were removed to be screened by  
139 titles and abstracts. From this screening, 150 papers were eligible to progress to full text screening.  
140 Nineteen further articles, six new interventions studies and 13 papers related to studies already  
141 included in this review, were found during the bibliography search and expert consultation. A total  
142 of 71 articles were included (Figure 3).

143 Figure 3. Flowchart of study selection PRISMA diagram

144 The 71 articles were published between 2004-2022 and included cluster randomised control trials

145 (RCT)(n=38)<sup>(20, 39-75)</sup>, study evaluations(n=13)<sup>(52, 56, 68, 76-86)</sup>, quantitative studies(n=11)<sup>(87-100)</sup>, mixed

146 methods studies(n=5)<sup>(88, 89, 101-103)</sup>, qualitative studies(n=3)<sup>(104-106)</sup>, and national case studies(n=2)<sup>(107,</sup>

147 <sup>108)</sup>. Behaviour change interventions were identified from 18 sub-Saharan African countries:

148 Ethiopia(n=18)<sup>(42, 58, 59, 62, 64, 67, 68, 70, 79-81, 92-95, 100)</sup>, South Africa(n=8)<sup>(40, 41, 45, 46, 66, 87-89)</sup>, Malawi(n=8)<sup>(43, 44,</sup>

149 <sup>71, 77, 78, 82, 85, 106)</sup>, Kenya(n=5)<sup>(39, 96, 101, 102, 104)</sup>, Burundi(n=5)<sup>(48-52)</sup>, Nigeria(n=5)<sup>(73, 90, 97, 99, 105)</sup>, Burkina

150 Faso(n=5)<sup>(48, 54, 56, 74, 109)</sup>, Ghana(n=4)<sup>(84, 91, 108)</sup>, Madagascar(n=2)<sup>(20, 75)</sup>, Zambia(n=2)<sup>(83,</sup>

151 <sup>110)</sup>, Tanzania(n=2)<sup>(47, 72)</sup> and one each from, Central African Republic<sup>(107)</sup>, Mali<sup>(63)</sup>, Mozambique<sup>(65)</sup>,

152 Rwanda<sup>(69)</sup>, Senegal<sup>(103)</sup>, Togo<sup>(61)</sup>, and Uganda<sup>(53)</sup>. A total of 30 studies were graded as low risk of bias,

153 30 as medium, and 11 as high (Table 2). Studies were not removed if they were deemed low quality

154 as findings can still be informative, even if there might be some bias in the intervention design.

155 However, all findings are presented alongside their risk of bias to highlight which studies' findings

156 may be less credible. The studies deemed as low quality are not given as much weight in this review

157 due to the possible bias and accuracy of results and interpretation.

158 Descriptions of intervention design, outcomes and implications are presented in Table 3. The results

159 are summarised below by the impact the interventions had on 1) anthropometric markers, 2) dietary

160 outcomes, 3) psychosocial outcomes and 4) behavioural intervention components.

161

162 Table 2 Risk of Bias score table

#	Author, year	Study design	Randomisation method	Blinding	Difference between groups	Selection	Loss to follow-up	Dietary assessment	Behaviour change component	Performance bias	Intention to Treat	Analysis	Confounding	Total	Risk of Bias
1	Abiyu, 2020	+1	+1	0	+1	+1	+1	0	0	0	+1	+1	+1	<b>8</b>	Low
2	Antwi, 2020	+1	+1	-1	0	0	+1	0	+1	0	-1	+1	-1	<b>2</b>	Medium
3	Aubel, 2004	0	-1	-1	-1	0	-1	0	0	0	N/A	0	-1	<b>0</b>	High
4	Becquey, 2019	+1	+1	-1	-1	+1	0	0	0	0	+1	+1	+1	<b>4</b>	Medium
5	Briaux, 2020	+1	+1	-1	+1	+1	0	0	0	-1	+1	+1	0	<b>4</b>	Medium
6	Byrd, 2019	+1	+1	0	0	+1	0	0	+1	+1	N/A	+1	+1	<b>7</b>	Low
7	DeLorme, 2018	-1	-1	N/A	-1	-1	+1	0	0	0	N/A	+1	-1	<b>-3</b>	Medium
8	Demilew, 2020	+1	+1	0	+1	+1	+1	+1	+1	0	0	+1	+1	<b>9</b>	Low
9	Diddana, 2018	+1	+1	0	+1	+1	0	-1	+1	0	N/A	+1	+1	<b>6</b>	Low
10	Dozio, 2016	-1	-1	-1	-1	0	-1	0	+1	0	N/A	-1	-1	<b>-6</b>	High
11	Ezezika, 2018	-1	-1	N/A	0	-1	+1	0	-1	0	N/A	-1	N/A	<b>-4</b>	High
12	Felegush, 2018	+1	+1	-1	+1	+1	+1	+1	+1	0	N/A	+1	+1	<b>8</b>	Low
13	Fernandes, 2016	-1	+1	-1	0	+1	-1	-1	+1	-1	N/A	-1	-1	<b>-4</b>	High
14	Flax, 2021	+1	+1	-1	0	+1	+1	0	0	0	-1	+1	+1	<b>4</b>	Medium

15	Galasso, 2009	0	+1	-1	0	+1	-1	+1	0	0	+1	+1	+1	<b>4</b>	Medium
16	Galasso, 2019	+1	+1	-1	+1	+1	+1	+1	0	+1	+1	+1	+1	<b>9</b>	Low
17	Gelli, 2018	+1	+1	+1	+1	+1	+1	+1	+1	+1	+1	+1	-1	<b>10</b>	Low
18	Gelli, 2020	+1	0	+1	+1	+1	+1	+1	+1	+1	+1	+1	-1	<b>10</b>	Low
19	Han, 2021	+1	+1	-1	+1	+1	0	+1	+1	0	+1	0	+1	<b>7</b>	Low
20	Hurley	0	-1	-1	0	0	+1	+1	0	0	N/A	+1	+1	<b>2</b>	Medium
21	Huybregts, 2019	+1	+1	0	0	+1	0	-1	+1	0	+1	+1	+1	<b>6</b>	Low
22	Jacobs, 2013	+1	+1	-1	0	+1	-1	-1	+1	0	N/A	+1	-1	<b>1</b>	Medium
23	Jemmott, 2011;	+1	+1	+1	+1	+1	+1	0	+1	+1	+1	+1	+1	<b>11</b>	Low
24	Jemmott, 2019	+1	+1	+1	+1	0	+1	0	+1	+1	+1	+1	+1	<b>10</b>	Low
25	Kang, 2016	+1	+1	-1	-1	-1	+1	-1	-1	+1	N/A	+1	-1	<b>-1</b>	Medium
26	Kang, 2017	+1	+1	-1	-1	-1	+1	-1	-1	+1	N/A	+1	-1	<b>-1</b>	Medium
27	Kang, 2017	0	-1	-1	-1	0	-1	+1	-1	+1	0	0	-1	<b>-4</b>	Medium
28	Katenga-Kaunda 2021	+1	+1	-1	+1	+1	0	0	0	0	-1	+1	+1	<b>4</b>	Medium
29	Kim, 2019,	+1	+1	0	0	+1	+1	0	+1	0	+1	+1	+1	<b>8</b>	Low
30	Kim, 2015	-1	-1	-1	-1	-1	1	-1	-1	0	N/A	0	-1	<b>-7</b>	High
31	Kim, 2016	0	1	-1	1	1	-1	1	0	0	-1	1	1	<b>3</b>	Medium
32	Kumar, 2018	+1	+1	-1	+1	0	-1	0	+1	0	+1	+1	+1	<b>5</b>	Low
33	Rosenberg, 2018	+1	+1	-1	+1	0	-1	0	+1	0	+1	+1	+1	<b>5</b>	Low
34	Lagerkvist, 2018	-1	+1	-1	+1	+1	-1	-1	+1	0	N/A	+1	+1	<b>2</b>	Medium

35	Leroy, 2016	+1	+1	-1	+1	0	0	0	0	+1	+1	+1	+1	<b>6</b>	Low
36	Leroy, 2018	+1	+1	-1	+1	0	0	0	0	+1	+1	+1	+1	<b>6</b>	Low
37	Leroy, 2020	+1	+1	-1	+1	0	0	0	0	+1	+1	+1	+1	<b>6</b>	Low
38	Olney, 2019	+1	+1	-1	+1	0	0	0	0	+1	+1	+1	+1	<b>6</b>	Low
39	Heckert, 2020	0	-1	+1	+1	0	N/A	N/A	0	+1	N/A	+1	+1	<b>4</b>	Medium
40	Lion, 2018	0	+1	-1	0	+1	0	-1	+1	+1	N/A	+1	+1	<b>4</b>	Medium
41	McKune, 2021	+1	+1	+1	+1	+1	-1	+1	0	+1	-1	+1	+1	<b>7</b>	Medium
42	Mlinda, 2018	+1	+1	-1	+1	+1	+1	0	0	0	+1	+1	+1	<b>7</b>	Low
43	Morris, 2012	-1	-1	0	+1	-1	+1	0	+1	0	+1	+1	+1	<b>3</b>	Medium
44	Muehlhoff, 2016	0	-1	-1	-1	0	+1	-1	-1	-1	N/A	-1	-1	<b>-7</b>	High
45	Mushaphi, 2015	0	+1	-1	+1	-1	-1	+1	-1	0	N/A	0	-1	<b>-2</b>	Medium
46	Mushaphi, 2017	0	+1	-1	+1	-1	-1	+1	-1	0	N/A	0	-1	<b>-2</b>	Medium
47	Mutiso, 2018	-1	+1	-1	-1	+1	-1	0	+1	0	N/A	+1	+1	<b>1</b>	Medium
48	Ogunsile & Ogunsile, 2016	0	+1	-1	0	+1	+1	0	+1	+1	n/a	+1	-1	<b>4</b>	Medium
49	Olney, 2015	+1	+1	0	+1	+1	0	+1	+1	+1	N/A	+1	+1	<b>9</b>	Low
50	Olney, 2016	+1	+1	0	+1	+1	0	+1	+1	+1	N/A	+1	+1	<b>9</b>	Low
51	Nielsen, 2019	0	+1	0	+1	+1	0	0	0	+1	N/A	+1	+1	<b>6</b>	Low
52	Passarelli, 2020	+1	+1	-1	0	+1	+1	0	+1	+1	-1	+1	+1	<b>6</b>	Low

53	Ruel-Bergeron, 2019a	-1	-1	-1	-1	+1	-1	+1	0	-1	-1	-1	-1	-6	High
54	Ruel-Bergeron, 2019b	0	-1	-1	-1	+1	-1	N/A	0	0	N/A	0	N/A	-3	Medium
55	Christian, 2020	0	-1	-1	-1	+1	-1	0	0	-1	-1	-1	-1	-7	High
56	Saaka, 2011	0	-1	-1	-1	0	-1	-1	-1	0	N/A	-1	-1	-7	High
57	Saaka, 2021	0	+1	-1	0	+1	-1	+1	0	0	N/A	+1	+1	3	Medium
58	Skar, 2019	0	0	-1	0	0	-1	+1	-1	0	N/A	+1	-1	-2	Medium
59	Santoso, 2021	+1	+1	0	+1	-1	+1	+1	-1	-1	+1	+1	+1	5	Low
60	Shapu, 2021	+1	+1	0	+1	+1	+1	0	+1	+1	+1	0	+1	9	Low
61	Steyn, 2015	+1	+1	0	0	+1	+1	0	-1	0	N/A	0	-1	2	Medium
62	De Villiers, 2016	+1	+1	0	0	+1	+1	0	-1	0	N/A	0	-1	2	Medium
63	Tamiru, 2017	0	+1	-1	+1	0	-1	+1	+1	+1	n/a	0	+1	4	Medium
64	Tariku, 2015;	+1	+1	-1	+1	+1	+1	0	+1	0	n/a	+1	0	6	Low
65	Mulualem, 2016	+1	+1	-1	+1	+1	+1	0	+1	0	n/a	+1	0	6	Low
66	Thuita, 2015;	0	-1	-1	-1	0	-1	-1	-1	-1	N/A	-1	-1	-9	High
67	Mukuria, 2016	0	-1	-1	-1	0	-1	-1	-1	-1	N/A	-1	-1	-9	High
68	Tomlinson, 2020	0	+1	-1	-1	+1	0	+1	+1	0	-1	+1	-1	1	Medium
69	Walton, 2017	+1	+1	+1	+1	+1	+1	0	+1	-1	N/A	+1	+1	8	Low

70	Workicho, 2021	0	-1	-1	+1	-1	+1	0	0	0	N/A	0	+1	-1	Medium
71	Yetnayet, 2017	0	+1	-1	+1	0	-1	0	+1	0	N/A	+1	+1	<b>3</b>	Medium

163

164 Table 3 Descriptions of included studies found in the systematic review

	<b>Author, publication year, country</b>	<b>Study design and intervention</b>	<b>Behaviour change wheel intervention function</b>	<b>Setting and participants</b>	<b>Assessment</b>	<b>Outcome and Take-home message</b>	<b>Risk of Bias Score</b>
<b>1</b>	Abiyu Ayalew et al 2020, Ethiopia	Cluster-RCT aimed to evaluate the effectiveness of complementary feeding behaviour change communication delivered through community-level actors on the dietary adequacy of infants	Training, Modelling, Enablement	612 mothers of infants aged <6 months at enrolment. Rural communities of West Gojjam Zone, Ethiopia	<b>Nutrition</b> A pre-tested, structured interviewer-administered questionnaire MDD, MMF and MAD. 24 hours dietary recall of mothers.	<ul style="list-style-type: none"> <li>The intervention significantly increased consumption of dairy products, eggs, vitamin A-rich fruits and vegetables, other fruits and vegetables and animal-source foods.</li> <li>Complementary feeding behaviour change communication delivered through community level actors significantly improved the dietary adequacy of infants.</li> </ul>	Low 8
<b>2</b>	Antwi et al 2020, Ghana	Pre-post controlled design was used to evaluate the program to assess the effect of nutrition education that is incorporated into the existing physical education (PE) lessons.	Education, Training	351 school-going children aged 6–12, and their primary home-based caregivers, and PE teachers in the study intervention Accra.	<b>Psychosocial</b> Nutrition knowledge, attitude and practices (KAP) scores.  <b>Nutrition</b> Single 24-hour recall and food frequency methods. (HAZ), (WAZ) (WHZ) and BMI-for-age Z scores.	<ul style="list-style-type: none"> <li>Intervention groups had significantly higher nutrition knowledge scores compared to controls in the lower primary level.</li> <li>A higher proportion of children in the intervention group strongly agreed they enjoyed learning about food and nutrition issues compared to the control group.</li> </ul>	Medium 2



Author, publication year, country	Study design and intervention	Behaviour change wheel intervention function	Setting and participants	Assessment	Outcome and Take-home message	Risk of Bias Score
3	Aubel et al 2004, Senegal Mixed method evaluation of intervention. Participatory communication and empowerment education approach with grandmothers, including songs, stories, group discussions.	Modelling, Education, Persuasion Enablement, Training, Education.	Participants were grandmothers 13 of the 60 rural villages in western Senegal supported by the child health program.	Interviews (n=15) and a questionnaire (8 items) (n=134) were conducted and administered to grandmothers before and after the intervention., Mothers also filled out a questionnaire (n=100) on the advice grandmother's give about nutrition. Process evaluation included focus groups conducted 1 year later.	<ul style="list-style-type: none"> <li>• There was no significant difference in MDD scores or in measured anthropometric indices, with a marginal reduction in stunting in the intervention group.</li> <li>• Nutrition knowledge of teachers and caregivers significantly improved.</li> <li>• Grandmother's nutrition knowledge and advice to reproductive women improved 12 months post intervention.</li> <li>• Nutrition-related practices of younger women improved as a result of grandmother's advice for both pregnancy and infant feeding.</li> <li>• Future maternal and child health programs should involve grandmothers and build their intrinsic commitment to family health.</li> </ul>	High -5

	<b>Author, publication year, country</b>	<b>Study design and intervention</b>	<b>Behaviour change wheel intervention function</b>	<b>Setting and participants</b>	<b>Assessment</b>	<b>Outcome and Take-home message</b>	<b>Risk of Bias Score</b>
<b>4</b>	Becquey et al 2019, Burkina Faso	Cluster-RCT integration of a preventive package including age-appropriate behaviour change communication on nutrition, health, and hygiene practices and a monthly supply of small-quantity lipid-based nutrient supplements.	Enablement, Persuasion.	Children 0–59 months and uses both community and health facility platforms in in Burkina Faso’s Northern Region.	<p><b>Nutrition</b> MUAC, WLZ.</p> <p><b>Other</b> Household wealth status score.</p>	<ul style="list-style-type: none"> <li>• There were no impacts on either acute malnutrition treatment coverage or incidence.</li> <li>• This is discussed as barriers to uptake of preventive and treatment services at the health centre.</li> </ul>	Medium 4
<b>5</b>	Briaux et al 2020, Togo	Parallel-cluster–RCT on unconditional cash transfer (UCTs) with behaviour change communication.	Persuasion, Incentivisation, Enablement, Training.	Women > 3 months pregnant and mothers of children aged 0–23 months 5 districts in Burkina Faso.	<p><b>Nutrition</b> Anthropometric measurements HAZ scores. Qualitative multiple-pass 24-h recall using the MDD-W.</p> <p><b>Other</b> WHO’s Violence Against Women instrument (VAWI), Household Budget Survey (HBS)</p>	<ul style="list-style-type: none"> <li>• UCTs had a protective effect on HAZ scores, which deteriorated in the control arm while remaining stable in the intervention arm but had no impact on stunting.</li> <li>• UCTs positively impacted both mothers’ and children’s (18–23 months) consumption of animal source foods and household food insecurity.</li> <li>• The UCT arm did not impact on reported child morbidity 2 week’s prior to report but reduced the financial barrier to seeking healthcare for sick children.</li> </ul>	Medium 4

	Author, publication year, country	Study design and intervention	Behaviour change wheel intervention function	Setting and participants	Assessment	Outcome and Take-home message	Risk of Bias Score
6	Byrd et al 2019, Kenya	Quantitative evaluation of nutrition, water and sanitation cluster-RCT. Community based promoters counselled households on optimal infant and child feeding practices, and children 6–24 months of age were provided with small quantity lipid based nutrient supplements.	Enablement, Training, Education, Persuasion.	10 districts within in Kenya, with one to two villages with a minimum of six women per cluster.	Household interviews conducted at baseline, year 1 and year 2.  <b>Nutrition</b> Infant and young child feeding survey was administered after year 1 (n=3652) and 2 (n=4987). An in-home quantitative 24 hour recall survey of foods (MDD, MMF, MAD) was conducted (n=185), and energy and nutrient intakes were calculated by linking intakes with WorldFood Dietary Assessment.	<ul style="list-style-type: none"> <li>• Women who received cash had higher odds of delivering in a health facility and lower odds of giving birth to low birth weight babies.</li> <li>• Positive effects were also found on women’s knowledge and physical intimate partner violence.</li> </ul> <ul style="list-style-type: none"> <li>• Compared to controls, there were no differences for MDD, MMF, and MAD for nutrition counselling or supplementation arms.</li> <li>• To improve complimentary feeding practices, a higher intensity and frequency of behaviour change communication may see more sustained results.</li> </ul>	Low 7

	<b>Author, publication year, country</b>	<b>Study design and intervention</b>	<b>Behaviour change wheel intervention function</b>	<b>Setting and participants</b>	<b>Assessment</b>	<b>Outcome and Take-home message</b>	<b>Risk of Bias Score</b>
<b>7</b>	DeLorme et al 2018, Kenya	Analysis of focus group evaluation data of the Kanayakla nutrition program to engage social networks to improve infant and young child feeding.	Enablement, Training.	Parents with infants and young children were recruited from rural villages in Kenya's East region as well as other community members (neighbours, grandparents, older parents).	Focus group data (four groups; n = 35, 7 men and 28 women)	<ul style="list-style-type: none"> <li>• The intervention increased nutrition knowledge and confidence, changed perceptions, and supported infant and child feeding practices at the individual, interpersonal, and institutional levels.</li> <li>• Environmental and economic constraints continue to affect food access.</li> <li>• Engaging the household's network of interpersonal and community relationships can play a role in addressing structural barriers to improve nutrition.</li> </ul>	High -3
<b>8</b>	Demilew et al 2020, Ethiopia	A two-arm parallel cluster RCT on the effect of guided counselling using the Health Belief Model and the Theory of Planned Behaviour on the nutritional status of pregnant women.	Enablement, Persuasion.	694 pregnant women from West Gojjam Zone, Ethiopia.	<p><b>Nutrition</b> MUAC measurements. Food security status was assessed using 27 previously validated questions.</p> <p><b>Psychosocial</b> Structured questionnaires through one-to-one interview on socio-demographic variables, obstetric history, Health Belief Model, and</p>	<ul style="list-style-type: none"> <li>• After the intervention, the prevalence of undernutrition was 16.7% lower in the intervention group compared with the control arm.</li> <li>• Women in the intervention group showed significant improvement in nutritional status at the end of the trial than the control group.</li> </ul>	Low 9

Author, publication year, country	Study design and intervention	Behaviour change wheel intervention function	Setting and participants	Assessment	Outcome and Take-home message	Risk of Bias Score	
				Theory Planned Belief constructs.  <b>Other</b> The Wealth Index			
9	Diddana et al 2018, Ethiopia	A community-based cluster RCT nutrition education programme based on Health Belief Model and nutritional knowledge and dietary practice of pregnant women	Education	138 pregnant women who were permanent residents in Dissie, Ethiopia	<b>Nutrition</b> Nutritional knowledge was collected by using 15 nutrition knowledge questions  <b>Psychosocial</b> Stage of pregnancy, Health Belief Model constructs, nutrition knowledge, and dietary practices collected using structured questionnaires.	<ul style="list-style-type: none"> <li>• Nutritional knowledge significantly increased in the intervention group over time, but was no significant difference between intervention and control.</li> <li>• There was significant improvement in the scores of Health Belief Model constructs in intervention group.</li> <li>• Providing nutrition education based on Health Belief Model improves nutritional knowledge and dietary practices of pregnant women.</li> </ul>	Low 6
10	Dozio et al 2016, Central Africa Republic	Evaluation of non-government organisation intervention that implemented food coupons and therapy groups to pregnant and lactating women.	Incentivisation, Education	900 pregnant and lactating women received food coupons and 199 women who were identified as most psychologically vulnerable received	Interviews with 86 pregnant and lactating women  <b>Nutrition</b> IDDS, FCS  <b>Psychosocial</b> Knowledge, attitude and practice (KAP) questionnaire	<ul style="list-style-type: none"> <li>• Women's average IDDS significantly increased, households improved their FCS, and psychological wellbeing improved.</li> <li>• Multi-sectoral approach strengthens family resilience, and psychological influences</li> </ul>	High -6

Author, publication year, country	Study design and intervention	Behaviour change wheel intervention function	Setting and participants	Assessment	Outcome and Take-home message	Risk of Bias Score	
11	Ezezika et al 2018, Nigeria	Qualitative evaluation of a pilot study on gamification of nutrition through board games, clubs and vouchers.	Enablement, Training, Education	therapy in Central African Republic. Three secondary schools in Abuja ,Nigeria. 31 adolescents 13-17 years participated in the focus groups.	with 23 items was administered. Semi-structured focus groups were conducted with 31 participants about their perceptions of the intervention and how it influenced their eating behaviour, attitudes and knowledge about nutrition.	should be considered to improve nutrition. <ul style="list-style-type: none"> <li>• Participants perceived that the intervention shifted their perceptions and preferences, and altered their behaviour by eating nutritious foods, increasing physical activity, improving overall well-being.</li> <li>• Gamification has short-term positive influences on adolescent dietary and physical activity behaviours, but more research needs to explore the long-term improvements.</li> </ul>	High -4
12	Felegush et al 2018, Ethiopia	RCT peer-led nutrition education intervention promoting locally available pulses	Environmental restructuring, Training	202 school children in Ethiopia	<p><b>Nutrition</b> Pre-test, post-test and HAZ, BMI for age, DDS (n=202)</p> <p><b>Psychosocial</b> Knowledge, attitude and practice (KAP) questionnaire with 23 items was administered (n=202).</p>	<ul style="list-style-type: none"> <li>• Mean DDS significantly increased.</li> <li>• Increased knowledge, attitude and practice about pulse preparation and consumption.</li> <li>• There was no significant difference in nutritional status but there was decreased prevalence of wasting.</li> <li>• Peer led education strategy provides an opportunity to reduce malnutrition and its impacts if properly designed,</li> </ul>	Low 8

Author, publication year, country	Study design and intervention	Behaviour change wheel intervention function	Setting and participants	Assessment	Outcome and Take-home message	Risk of Bias Score	
13	Fernandes et al 2016, Ghana	Evaluation of the School Meals Planner Package and behaviour change communication campaigns introduced in Ghana. Developing menus for home-grown school feeding programs.	Education. Enablement, Persuasion.	Intervention introduced in 42 districts in Ghana, reaching more than 320 000 children.	Monitoring visits were undertaken in all the 42 pilot districts at least once every school term, where they asked teachers and caterers about different aspects of the intervention.	including the use of behavioural change mode. <ul style="list-style-type: none"> <li>Monitoring and evaluation approaches found positive findings including that the tool was easy to use but called for more capacity building.</li> <li>Complaints included that correct ingredient usage estimates made meals too expensive.</li> <li>The tool is valued by Ghana's government at the highest levels as it is adopted as an official policy, due to supporting nutritious, locally sourced menus for the school feeding program in Ghana.</li> </ul>	High -4
14	Flax et al, 2021, Rwanda	Cluster-randomized controlled trial designed to test the impact of a Social and Behaviour Change Communication (SBCC) intervention to promote the consumption of Animal source foods (ASFs)	Enablement, Education, Training, Persuasion	The mother was 18–49 years of age and had a child who was 12–29 months of age Nyabihu and Ruhango Districts, Rwanda	<b>Nutrition</b> World Health Organization (WHO) infant and young child feeding questionnaire (24-hour recall) Maternal Animal source foods knowledge questions	<ul style="list-style-type: none"> <li>More mothers in the intervention group compared with the control group knew they should feed their children Animal source foods and give them 1 cup of cow's milk per day</li> <li>Children's consumption of fresh cow's</li> </ul>	Medium 4

Author, publication year, country	Study design and intervention	Behaviour change wheel intervention function	Setting and participants	Assessment	Outcome and Take-home message	Risk of Bias Score	
15	Galasso et al 2009, Madagascar	Large scale community-based RCT nutrition programme that included weighing infants, providing nutrition counselling to the mothers, promoting behavioural change nutrition and hygiene education sessions, and suppling micronutrient supplementation.	Training, Education, Enablement,	Mothers and infants in 1999 in four provinces and expanded to all six provinces in Madagascar in 2000.	<b>Nutrition</b> Child LAZ and WLZ. Five tablet-based questionnaires administered at the three timepoints on household demographics, mother and primary caregiver questionnaire, child questionnaire, community health worker questionnaire and village details.	<p>milk 2 or more times per week increased in the intervention group, although not significantly and minimum dietary diversity was unchanged.</p> <ul style="list-style-type: none"> <li>In poor households receiving a livestock transfer, strategies to further tailor SBCC and increase cow's milk production may be needed to achieve larger increases in children's frequency of milk consumption</li> </ul> <ul style="list-style-type: none"> <li>The programme helped 0–5 year old children in the participating communities to bridge their gap in weight-for-age z-score and the incidence of underweight.</li> <li>The programme had significant effects in protecting long-term nutritional outcomes (height-for-age z-scores and incidence of stunting).</li> <li>Less educated mothers and worse-off households were less placed to benefit from the</li> </ul>	Medium 4



	Author, publication year, country	Study design and intervention	Behaviour change wheel intervention function	Setting and participants	Assessment	Outcome and Take-home message	Risk of Bias Score
						programme in terms of nutritional outcomes.	
16	Galasso et al 2019, Madagascar	Large scale community-based RCT nutrition programme that included weighing infants, providing nutrition counselling to the mothers, promoting behavioural change nutrition and hygiene education sessions, and suppling micronutrient supplementation.	Training, Education, Enablement,	3738 Mothers and infants in 1999 in four provinces and expanded to all six provinces in Madagascar in 2000.	<b>Nutrition</b> Child LAZ and WLZ. Five tablet-based questionnaires administered at the three timepoints on household demographics, mother and primary caregiver questionnaire, child questionnaire, community health worker questionnaire and village details.	<ul style="list-style-type: none"> <li>• There were no main effects of any of the intervention groups on any measure of anthropometry or any of the child development outcomes in the full sample</li> <li>• Compared with children in the intervention group, the youngest children (&lt;6 months at baseline) in the T2 and T3 intervention groups who were fully exposed to the child LNS dose had higher length-for-age Z scores and lower stunting prevalence.</li> </ul>	Low 9
17	Gelli et al 2018, Malawi	One year evaluation of a longitudinal cluster-RCT on early childhood	Enablement Education,	1248 preschool children (aged 36–72 mo) and 304	<b>Nutrition</b> Household food production to measure dietary diversity.	<ul style="list-style-type: none"> <li>• Compared with the control group, preschool children in</li> </ul>	Low 10

Author, publication year, country	Study design and intervention	Behaviour change wheel intervention function	Setting and participants	Assessment	Outcome and Take-home message	Risk of Bias Score	
	development centre–based agriculture and nutrition intervention, including behaviour change communication training	Modelling, Persuasion, Environmental restructuring.	younger siblings (aged 6–24 mo) from n 60 community-based childcare centers in the Zomba district of Malawi since 2008.	<p>Dietary assessment was undertaken using the interactive multi-pass 24-h recall method. Child dietary diversity (for preschoolers) and household dietary diversity were measured. Anthropometric data included measurements of height and weight for all children from 6 to 72 mo</p> <p><b>Psychosocial</b> Caregiver IYCF knowledge and practices interviews and questionnaires.</p>	<p>the intervention group had greater increases in nutrient intakes and in dietary diversity.</p> <ul style="list-style-type: none"> <li>• No impacts on anthropometric measures were seen in preschoolers.</li> <li>• Younger siblings in the intervention group had greater increases in height-for-age z scores than did children in the control group and greater reductions in the prevalence of stunting.</li> </ul>		
<b>18</b>	Gelli et al, 2020, Malawi	Evaluation of the one year longitudinal cluster-RCT on early childhood development centre–based agriculture and nutrition intervention, including behaviour change communication training	Enablement Education, Modelling, Persuasion, Environmental restructuring.	60 community-based childcare centres, covering 1248 preschool children (aged 36–72 months) and 304 younger siblings (aged 6–24 months), in the Zomba district of Malawi.	<p><b>Nutrition</b> DDS, MDD, Knowledge of infant and young child feeding was assessed through caregiver interviews. WAZ, HAZ, and WHZ.</p>	<ul style="list-style-type: none"> <li>• Positive impacts were found for several individual micronutrient intakes: vitamin A, vitamin C, riboflavin, zinc.</li> <li>• These impacts were driven by effects on younger children (aged 3–4 y)</li> <li>• Using a preschool platform to implement a nutrition-sensitive BCC intervention is an effective strategy</li> </ul>	Low 10

	Author, publication year, country	Study design and intervention	Behaviour change wheel intervention function	Setting and participants	Assessment	Outcome and Take-home message	Risk of Bias Score
19	Han et al, 2021, Ethiopia	Cluster randomized control trial four-month-long Behavior Change Communication (BCC) and food vouchers in Ethiopia	Enablement Education, Modelling, Persuasion, Incentivisation, Training	Mothers with at least one child aged between 4 and 20 months in Ejere district (woreda) located in the Oromia region of central Ethiopia	<b>Nutrition</b> IYCF knowledge scores and child dietary diversity score (CDDS) Child anthropometry such as height-for-age Z scores (HAZ) and stunting as well as weight-for-height Z scores (WHZ) and wasting. Food consumption score (FCS)  Weekly household food expenditure in the past seven days	to improve the adequacy of micronutrient intake of preschool children in food-insecure settings  <ul style="list-style-type: none"> <li>Improvements in child-feeding practices and a reduction in chronic child undernutrition only when BCC and vouchers are provided together. BCC or voucher alone had limited impacts.</li> <li>Importance of adding an effective educational component to existing transfer programs</li> </ul>	Low 7
20	Hurley et al, 2021, Malawi	Impact evaluation quasi-experimental, longitudinal nutrition program which gave lipid-based nutrient supplement to infants and social and behaviour change communication to caregivers.	Enablement, Persuasion, Education	Infants from 6–23 months of age, accompanied by caregivers in rural, agrarian districts in central Malawi.	<b>Nutrition</b> Infant LAZ, WLZ, and MUAC measurements Child morbidity and handwashing practices. IYCF variables included continued breastfeeding, dietary diversity, minimum dietary diversity (MDD),	<ul style="list-style-type: none"> <li>Growth velocities favoured program children, such that LAZ (+0.12/y), WLZ (+0.12/y), and MUAC (+0.24 cm/y) measurements increased.</li> <li>Significant 13.8 pp reductions in the prevalence of malaria and fever at the 18-month follow-up.</li> <li>Significant improvements of 20 pp in minimum dietary</li> </ul>	Medium 2

Author, publication year, country	Study design and intervention	Behaviour change wheel intervention function	Setting and participants	Assessment	Outcome and Take-home message	Risk of Bias Score	
21	Huybregts et al 2019, Mali	A two-arm cluster-RCT integrating small-quantity lipid-based nutrient supplements into community-level screening for acute malnutrition.	Enablement, Persuasion, Incentivisation.	Children 6–23 months of age and caregivers. 48 health center catchment areas in Mali.	minimum meal frequency (MMF), and minimum acceptable diet (MAD).  <b>Nutrition</b> Anthropometric measurements: WLZ, MUAC.	diversity and minimum acceptable diet were seen in the program versus comparison district at 18 months of follow-up.  <ul style="list-style-type: none"> <li>• The intervention significantly increased acute malnutrition screening coverage.</li> <li>• No impact on treatment coverage or AM prevalence was found.</li> <li>• Children in the intervention arm, however, were 29% less likely to develop a first AM episode (incidence) and, compared to children in comparison arm, their overall risk of AM (longitudinal prevalence) was 30%.</li> </ul>	Low 6
22	Jacobs et al 2013, South Africa	Evaluate the effectiveness of the Making the Difference programme - an education and activity-based intervention for Grade 4 learners at primary schools. Programme included EduModules and	Enablement, Education Training, Persuasion.	Four intervention and five control schools (n = 325 students) were selected in Western Cape, South Africa.	Learner-centred questionnaire, was developed as part of the Making the Difference programme school-based research programme, included constructs about knowledge, attitudes (self-efficacy) and practices in terms of nutrition and physical activity (n=325).	<ul style="list-style-type: none"> <li>• Small significant improvement in eating vegetables and taking lunch boxes to school but not explained by improvements in healthy eating, self-efficacy or knowledge.</li> <li>• As small significant results, the programme may need further evaluation to assess if this a worthwhile scheme.</li> </ul>	Medium 1

Author, publication year, country	Study design and intervention	Behaviour change wheel intervention function	Setting and participants	Assessment	Outcome and Take-home message	Risk of Bias Score	
	educational visits to stores, suppliers and distribution centres, and talks for learners and parents by a network of trained dietitians						
23	Jemmott, 2011, South Africa	Cluster RCT Cognitive-behavioural health-promotion intervention. Interventions were based on Social Cognitive Theory, and the Theory of Planned Behaviour.	Enablement, Training, Education.	Participants were 1057 grade 6 learners (mean age =12.4 years), with 96.7% retained at 12-month follow-up, from Eastern Cape Province, South Africa	<p><b>Nutrition</b> A seven-item food frequency questionnaire to evaluate 5-a-Day studies was used to measure fruit and vegetable consumption over the past 30 days (n=1056).</p> <p><b>Psychosocial</b> Health promoting-behaviour attitude and intention and drug-and-alcohol-use attitude and intention were assessed on 5-point rating scales (n=1056).</p>	<ul style="list-style-type: none"> <li>• Participants in the health-promotion intervention met 5-a-day fruit and vegetable and physical activity guidelines.</li> <li>• The intervention increased health-promotion knowledge, attitude and intention.</li> <li>• Theory based and contextually appropriate interventions may increase health behaviours among young adolescents in sub-Saharan Africa.</li> </ul>	Low 11
24	Jemmott, 2019, South Africa	Cluster RCT Cognitive-behavioural health-promotion intervention. Interventions were based on Social Cognitive Theory, and	Enablement, Training, Education.	Participants were 1057 grade 6 learners (mean age =12.4 years), with 96.7% retained at 12-month follow-up, from Eastern Cape	<p><b>Nutrition</b> A seven-item food frequency questionnaire to evaluate 5-a-Day studies was used to measure fruit and vegetable consumption over the past 30 days (n=1056).</p>	<ul style="list-style-type: none"> <li>• The effect on 5-a-day diet did not weaken at long-term compared with short-term follow-up.</li> <li>• The effect on physical activity guidelines was weaker at long-term follow-up, mainly</li> </ul>	Low 10

Author, publication year, country	Study design and intervention	Behaviour change wheel intervention function	Setting and participants	Assessment	Outcome and Take-home message	Risk of Bias Score	
	the Theory of Planned Behaviour.		Province, South Africa	<b>Psychosocial</b> Health promoting-behaviour attitude and intention and drug-and-alcohol-use attitude and intention were assessed on 5-point rating scales (n=1056).	because of a reduced effect on muscle-strengthening physical activity. <ul style="list-style-type: none"> <li>The intervention also increased health promotion attitude and intention and health knowledge and reduced binge drinking compared with the control group.</li> </ul>		
25	Kang et al 2016, Ethiopia	Impact evaluation of a community-based participatory nutrition promotion programme, involving a 2-week group nutrition session, attempted to improve child feeding and hygiene.	Enablement	Participants were 2064 mother-child pairs from Habro and Melka Bello districts, Ethiopia	A total of thirteen items in the observation checklist were conducted during the programme (n=114). A recall survey was conducted to explore the participants' perception of the nutrition sessions.	<ul style="list-style-type: none"> <li>Compared with children 6 to 24 months of age in the control area, those in the intervention area had a greater increase in z scores for length-for-age and weight-for-length</li> <li>At the end of the 12-month follow-up, children in the intervention area showed an 8.1% (P = 0.02) and 6.3% (P = 0.046) lower prevalence of stunting and underweight, respectively</li> </ul>	Medium -1
26	Kang et al 2017, Ethiopia	Impact evaluation of a community-based participatory nutrition promotion programme, involving a 2-week group	Enablement	Participants were 2064 mother-child pairs from Habro and Melka Bello districts, Ethiopia	A total of thirteen items in the observation checklist were conducted during the programme (n=114). A recall survey was conducted to explore the participants'	<ul style="list-style-type: none"> <li>Mothers in the intervention area showed higher scores than those in the control area regarding meal frequency and feeding score</li> </ul>	Medium -1

Author, publication year, country	Study design and intervention	Behaviour change wheel intervention function	Setting and participants	Assessment	Outcome and Take-home message	Risk of Bias Score
	nutrition session, attempted to improve child feeding and hygiene.			perception of the nutrition sessions.	<ul style="list-style-type: none"> <li>There were no differences in the scores of breast-feeding, dietary diversity and hand washing between the two areas</li> <li>The results can be applied to scaling up programme and designing similar social and behaviour change communication models by governments and non-governmental organisations in Ethiopia or other East African communities.</li> </ul>	
27	Kang et al 2017, Ethiopia	Process evaluation of a community-based participatory nutrition (CBPN) promotion programme, involving a 2-week group nutrition session, attempted to improve child feeding and hygiene.	Enablement	197 mothers from Habro and Melka Bello districts, Ethiopia	<p><b>Nutrition</b></p> <p>Records of 372 nutrition sessions, as part of a cluster-randomized trial, among mothers from a household survey and CPNP participants (n 197) from a recall survey.</p> <ul style="list-style-type: none"> <li>The recall survey among participants showed a positive perception of the sessions (~90 %) and a moderate level of message recall (~65 %).</li> <li>The household survey found that the CPNP participants had higher minimum dietary diversity at the early stage and a higher involvement in the Essential Nutrition Action (ENA) programme over a year of follow-up compared with non-</li> </ul>	Medium -4

	Author, publication year, country	Study design and intervention	Behaviour change wheel intervention function	Setting and participants	Assessment	Outcome and Take-home message	Risk of Bias Score
						participants within the intervention area	
28	Katenga-Kaunda et al, 2021, Malawi	Cluster randomised controlled trial supplementary nutrition education, dietary counselling and routine ANC services in Malawi	Modelling, Enablement, Education, Persuasion	257 pregnant women from Namkumba area in Mangochi, one of the 12 districts in the southern region of Malawi.	<p><b>Nutrition</b> 24 h quantitative food consumption Dietary diversity score Minimum dietary diversity for woman</p> <p><b>Psychosocial</b> nutrition knowledge questionnaire</p>	<ul style="list-style-type: none"> <li>• Significant improvements in nutrition knowledge, dietary diversity and nutrition behaviour in the intervention group compared with controls</li> <li>• Increased nutrition knowledge was associated with improved dietary diversity only in the intervention women, who also improved their nutrition perceptions and behaviour.</li> <li>• Antenatal nutrition education needs strengthening to improve dietary intakes in pregnancy in this low resource-setting.</li> </ul>	Medium 4
29	Kim et al, 2015, Ethiopia	Process evaluation of cluster-RCT evaluation design with cross-sectional surveys. Alive & Thrive provided intensive behaviour change interventions through 4 platforms:	Persuasion, Environmental restructuring, Modelling, Enablement.	Households with children aged 6–23.9months in Ethiopia.	Data from a qualitative study among three levels of front line workers (n = 54), i.e. supervisors, health extension workers (HEWs), and community volunteers, and among mothers with children under two years of age	<ul style="list-style-type: none"> <li>• Job aids were used regularly by most supervisors and HEWs, but only 54% of volunteers in Tigray and 39% in SNNPR received them.</li> <li>• Quality of program message delivery was lower among</li> </ul>	High -6



Author, publication year, country	Study design and intervention	Behaviour change wheel intervention function	Setting and participants	Assessment	Outcome and Take-home message	Risk of Bias Score	
	interpersonal communication (IPC), nutrition-sensitive agricultural activities, community mobilization, and mass media.			(n = 60); and cross-sectional PE surveys with FLWs (n = 504) and mothers (n = 750) in two regions (Tigray and SNNPR) were analyzed to examine program fidelity.	volunteers, and aided recall of key messages among mothers was also low <ul style="list-style-type: none"> <li>Although FLW supervision exposure was high, content and frequency were irregular.</li> </ul>		
30	Kim et al, 2016, Ethiopia	A pre- and post-intervention adequacy evaluation design was used; repeated cross-sectional surveys, of cluster-RCT evaluation design with cross-sectional surveys. Alive & Thrive (A&T) provided intensive behaviour change interventions through 4 platforms: interpersonal communication (IPC), nutrition-sensitive agricultural activities, community mobilization, and mass media.	Persuasion, Environmental restructuring, Modelling, Enablement.	Households with children aged 6–23.9 months in Ethiopia.	<b>Nutrition</b> WHO-recommended core IYCF indicators related to BF and CF (for children 0–24 months of age) and stunting in children 24–59.9 months of age. Weight and length/height were converted into height-for-age z-scores (HAZ), weight-for-age z-scores (WAZ), and weight-for-height z-scores (WHZ) according to the WHO child growth standards	<ul style="list-style-type: none"> <li>Early BF initiation and exclusive BF increased by 13.7 and 9.4 percentage points.</li> <li>Complementary foods, minimum dietary diversity, minimum meal frequency increased significantly in the intensive group but remained low at endline.</li> <li>Timely introduction and intake of foods promoted by the interventions improved significantly, but anthropometric outcomes did not.</li> </ul>	Medium 3

	<b>Author, publication year, country</b>	<b>Study design and intervention</b>	<b>Behaviour change wheel intervention function</b>	<b>Setting and participants</b>	<b>Assessment</b>	<b>Outcome and Take-home message</b>	<b>Risk of Bias Score</b>
<b>31</b>	Kim et al, 2019, Ethiopia	A pre- and post-intervention adequacy evaluation design was used; repeated cross-sectional surveys, of cluster-RCT evaluation design with cross-sectional surveys. Alive & Thrive provided intensive behaviour change interventions through 4 platforms: interpersonal communication (IPC), nutrition-sensitive agricultural activities (AG), community mobilization (CM), and mass media (MM).	Persuasion, Environmental restructuring, Modelling, Enablement.	Households with children aged 6–23.9 months in Ethiopia.	<b>Nutrition</b> Maternal recall of all foods and liquids given to children in the first few days after birth and in the 24 h prior to the survey. Household food security was measured using FANTA/USAID's Household Food Insecurity Access Scale.	<ul style="list-style-type: none"> <li>• Significant differential declines in stunting prevalence were observed in children aged 6–23.9 months, decreasing from 36.3% to 22.8% in the intensive group.</li> <li>• Dose–response analyses showed higher odds of MDD and MMF and higher HAZ among women exposed to 3 or 4 intervention platforms. Strong relation between agricultural intervention and egg consumption, which led to increased child dietary diversity and HAZ.</li> </ul>	8
<b>32</b>	McKune et al, 2021, Burkina Faso	Cluster randomized controlled trial behaviour change intervention to increase child egg consumption in rural Burkina Faso	Modelling, Enablement, Education, Persuasion, Training	260 mother-child dyads with children aged 4 to 17 months from 18 villages in Kaya Department in Burkina Faso	<b>Nutrition</b> Anthropometric measures including WLZ, WAZ, LAZ Women's decision making about eggs Egg consumption reported by mothers	<ul style="list-style-type: none"> <li>• Intervention significantly increased egg consumption and women's decision-making about eggs</li> <li>• Significantly decreased wasting and underweight</li> <li>• When coupled with the gift of chickens, the behaviour change intervention yielded a greater increase in egg</li> </ul>	Low 7

Author, publication year, country	Study design and intervention	Behaviour change wheel intervention function	Setting and participants	Assessment	Outcome and Take-home message	Risk of Bias Score	
33	Rosenberg et al 2018, Zambia	Cluster RCT “Realigning Agriculture for Improved Nutrition” RAIN intervention in a multisectoral approach integrating agricultural diversification, promotion of gender equality, women’s empowerment and nutrition behaviour change communication..	Modelling, Education, Enablement, Persuasion.	Mothers groups who were pregnant or lactating in rural Zambia.	<p><b>Nutrition</b> Child practices were measured using maternal recall of practices related to breastfeeding and complementary feeding using eight indicators recommended by the WHO. Infancy and young children feeding knowledge was assessed based on the mothers’ answers to a series of questions related to knowledge on established IYCF practices. WHZ scores</p> <p><b>Psychosocial</b> Women’s empowerment was measured aligned with the domains included in the Women’s Empowerment in Agriculture Index.</p>	<p>consumption and significantly reduced wasting and underweight.</p> <ul style="list-style-type: none"> <li>• The program increased diversity in crops grown and the number of months in which various food groups were harvested.</li> <li>• the program substantially increased the percentage of households producing three nutritious crops it promoted (groundnuts, rape and tomatoes)</li> <li>• Modest increases in household access to diverse food groups.</li> <li>• Despite modest increases in the proportion of children consuming pulses, legumes and nuts, ultimately there were no significant improvements in the overall dietary diversity of young children or their mothers.</li> </ul>	Low 5
34	Kumar et al, 2018, Zambia	Cluster RCT “Realigning Agriculture for Improved Nutrition”	Modelling, Education,	Mothers groups who were pregnant or	<p><b>Nutrition</b> Child practices were measured using maternal recall of</p> <ul style="list-style-type: none"> <li>• Positive effects on women’s empowerment, infant and young child feeding</li> </ul>	Low 5	

Author, publication year, country	Study design and intervention	Behaviour change wheel intervention function	Setting and participants	Assessment	Outcome and Take-home message	Risk of Bias Score	
	RAIN intervention in a multisectoral approach integrating agricultural diversification, promotion of gender equality, women's empowerment and nutrition behaviour change communication.	Enablement, Persuasion.	lactating in rural Zambia.	practices related to breastfeeding and complementary feeding using eight indicators recommended by the WHO. Infancy and young children feeding knowledge was assessed based on the mothers' answers to a series of questions related to knowledge on established IYCF practices. WHZ scores	knowledge, child morbidity and WHZ scores, but no impact on stunting. <ul style="list-style-type: none"> <li>Fostering higher participation rates could support greater impacts on child nutrition outcomes.</li> </ul>		
35	Lagerkvist et al 2018, Nigeria	Cross-sectional design. Four-week intervention and field experiment providing a meal based on orange-fleshed sweet potato, rich in pro-vitamin linked to goal setting.	Education, Training, Enablement	556 randomly selected children aged 7–12 in Osun state, Nigeria.	<p><b>Nutrition</b></p> <p>A survey questionnaire was administered to obtain baseline conditions before the nutrition education intervention session on food poverty and breakfast routines.</p> <p><b>Psychosocial</b></p> <p>Women's empowerment was measured aligned with the domains included in the Women's Empowerment in Agriculture Index.</p>	<ul style="list-style-type: none"> <li>Planning by stating intentions increased the amount eaten.</li> <li>Priming of the experimental goals evoked positive feelings after eating.</li> <li>School meals programmes should be designed to better align personal motivation with</li> </ul>	Medium 2

Author, publication year, country	Study design and intervention	Behaviour change wheel intervention function	Setting and participants	Assessment	Outcome and Take-home message	Risk of Bias Score
				<p>Recall data on food intake focusing number of times main food groups were consumed per day during a typical week.</p> <p><b>Psychosocial</b>            After eating each participant rated how their school meal made them feel. Feelings were captured using two measures on a five-point Likert scale with anchors (1=tired; 5=refreshed, and 1=sleepy; 5=awake) (n=556).</p>	behavioural change in relation to dietary health.	
36	Leroy et al 2016, Burundi	4-arm cluster-RCT repeated cross-sectional design including food rations, health services strengthening and promotion, and behaviour change communication on nutrition, hygiene, and health practices	Enablement, Education, Persuasion.	Pregnant women (>4 months of gestation) and mothers of children aged 6-24 months from Burundi.	<p><b>Nutrition:</b>            Three repeated cross-sectional surveys were conducted including household dietary diversity, hunger, food insecurity, and food consumption. Also mother diet diversity and child index of infant and young children feeding (6946 households).</p> <ul style="list-style-type: none"> <li>• Hemoglobin decreased and anemia increased markedly from baseline to follow-up.</li> <li>• Significant beneficial effect on both children and mothers who had given birth in the previous 3 mo</li> <li>• Significant (P &lt; 0.05) impacts on factors along the hypothesized impact pathways: dietary diversity, consumption of iron-rich foods, morbidity, and fever for</li> </ul>	Low 6

	Author, publication year, country	Study design and intervention	Behaviour change wheel intervention function	Setting and participants	Assessment	Outcome and Take-home message	Risk of Bias Score
37	Leroy et al 2018, Burundi	4-arm cluster-RCT repeated cross-sectional design including food rations, health services strengthening and promotion, and behaviour change communication on nutrition, hygiene, and health practices	Enablement, Education, Persuasion.	Pregnant women (>4 months of gestation) and mothers of children aged 6-24 months from Burundi.	<b>Nutrition:</b> Three repeated cross-sectional surveys were conducted including household dietary diversity, hunger, food insecurity, and food consumption. Also mother diet diversity and child index of infant and young children feeding (6946 households). height-for-age z score HHS, HFIAS, MDD.	<p>child hemoglobin and dietary diversity, consumption of iron-rich foods, and current bed-net use for maternal anemia</p> <ul style="list-style-type: none"> <li>Stunting (height-for-age z score increased markedly from baseline to follow-up, but Tubaramure had a significant beneficial effect.</li> <li>Secondary analyses showed that the effect was limited to children whose mother and head of household had some primary education and who lived in households with above-median assets.</li> </ul>	Low 6
38	Leroy et al 2020, Burundi	4-arm cluster-RCT repeated cross-sectional design including food rations, health services strengthening and promotion, and behaviour change communication on nutrition, hygiene, and health practices	Enablement, Education, Persuasion.	Pregnant women (>4 months of gestation) and mothers of children aged 6-24 months from Burundi.	<b>Nutrition:</b> Three repeated cross-sectional surveys were conducted including household dietary diversity, hunger, food insecurity, and food consumption. Also mother diet diversity and child index of infant and young children feeding (6946 households). HHS, HFIAS, MDD.	<ul style="list-style-type: none"> <li>The intervention significantly improved the percentage of food secure households, increased household energy consumption and micronutrient consumption.</li> <li>Positive effect on maternal dietary diversity (+0.4 food groups, <math>P &lt; 0.05</math>) and increased.</li> </ul>	Low 6

	Author, publication year, country	Study design and intervention	Behaviour change wheel intervention function	Setting and participants	Assessment	Outcome and Take-home message	Risk of Bias Score
39	Olney et al 2019, Burundi	4-arm cluster-RCT repeated cross-sectional design including food rations, health services strengthening and promotion, and behaviour change communication on nutrition, hygiene, and health practices	Enablement, Education, Persuasion.	Pregnant women (>4 months of gestation) and mothers of children aged 6-24 months from Burundi.	<b>Nutrition:</b> Three repeated cross-sectional surveys were conducted including household dietary diversity, hunger, food insecurity, and food consumption. Also mother diet diversity and child index of infant and young children feeding (6946 households).	<ul style="list-style-type: none"> <li>• The effects on many outcomes were attributable to the food rations</li> <li>• Postprogram effects (<math>P &lt; 0.05</math>) were found on household food security, maternal dietary diversity, and younger sibling's complementary feeding practices.</li> <li>• At first follow-up, Tubaramure positively affected language but not motor development among children aged 4–23.9 months.</li> <li>• Among infants 12–23.9 months, the program positively affected language and motor development.</li> <li>• At second follow-up, among children aged 24–41.9 mo, Tubaramure marginally affected motor development</li> <li>• significant positive impacts on diet, health, and nutritional indicators of children aged 12–23.9 mo and health and nutritional indicators of children aged 24–</li> </ul>	Low 6

	Author, publication year, country	Study design and intervention	Behaviour change wheel intervention function	Setting and participants	Assessment	Outcome and Take-home message	Risk of Bias Score
40	Heckert et al 2020, Burundi	Economic evaluation on a 4-arm cluster-RCT repeated cross-sectional design including food rations, health services strengthening and promotion, and behaviour change communication on nutrition, hygiene, and health practices	Enablement, Education, Persuasion.	Pregnant women (>4 months of gestation) and mothers of children aged 6-24 months from Burundi.	Total and per beneficiary cost, conducted cost consequence analyses, and estimated the cost savings from extending the programme for 2 years.	29.9 mo, supporting the plausibility of program impacts on child development.	Medium 4
						<ul style="list-style-type: none"> <li>• Providing food assistance for the full 1,000 days led to the lowest cost per percentage point reduction in stunting.</li> <li>• Reducing the duration of ration eligibility reduced per beneficiary costs but was less effective.</li> <li>• A 2-year extension could have saved 18% per person.</li> <li>• Programmes providing smaller rations or rations for shorter durations, although less expensive per beneficiary, may not provide the necessary dose to improve (biological) outcomes.</li> <li>• delivering effective programmes for longer periods can generate cost savings by dispersing start-up costs and lengthening peak operating capacity.</li> </ul>	



	<b>Author, publication year, country</b>	<b>Study design and intervention</b>	<b>Behaviour change wheel intervention function</b>	<b>Setting and participants</b>	<b>Assessment</b>	<b>Outcome and Take-home message</b>	<b>Risk of Bias Score</b>
<b>41</b>	Lion et al 2018, Nigeria	Quasi-experimental pre- and post-intervention design with a randomly assigned intervention and control on a behaviour change programme and the use of green leafy vegetables (greens) and iron-fortified bouillon cubes in stews to improved iron intake.	Enablement, Education, Persuasion, Incentivisation	527 mother-daughter pairs (daughters aged 12–18) from Ile-Ife (Intervention town). Osogbo (Control town) in Nigeria.	<p><b>Nutrition</b></p> <p>FFQ was created and tailored to the Nigerian context. The questionnaire captured how often participants had prepared different types of stews in the past 2 weeks, and which ingredients were used, including quantity. Quantity assessments were based on locally used units. An intake question was used.</p> <p><b>Psychosocial</b></p> <p>The determinants of behaviour questionnaire measured the two key behaviour of interest: “adding Knorr iron-fortified cubes to beef stew” and “adding green leafy vegetables to beef stew”. The questionnaire included items measuring Attitude, Injunctive Social Norm, Descriptive Social norms, Perceived Behavioural Control, Habit and Intention.</p>	<ul style="list-style-type: none"> <li>• Change in iron-fortified cubes added to stews did not significantly differ between towns.</li> <li>• Increase in cubes added to soups was significantly larger in the Intervention town compared to the Control Town.</li> <li>• Change in greens added to soups was significantly larger in the Control town compared to the Intervention town.</li> <li>• The intervention positively influenced awareness of anaemia and the determinants of behaviour in the Intervention town, with hardly any change in the Control town.</li> </ul>	Medium 4

	<b>Author, publication year, country</b>	<b>Study design and intervention</b>	<b>Behaviour change wheel intervention function</b>	<b>Setting and participants</b>	<b>Assessment</b>	<b>Outcome and Take-home message</b>	<b>Risk of Bias Score</b>
<b>42</b>	Mlinda et al 2018, Tanzania	RCT facility-based intervention practical nutrition programme on feeding skills in caregivers of children with cerebral palsy	Education, Training, Enablement, Environmental restructuring,	110 children under 5 with cerebral palsy in Dar es Salaam, Tanzania	Researchers observed caregiver looking after the infant and caregiver reported on their stress levels during feeding (n=228).	<ul style="list-style-type: none"> <li>The intervention significantly improved feeding skills of caregiver such as feeding children slower and involved the child during the feeding process.</li> <li>Strengthening nutrition education and services for caregivers of children with cerebral palsy improves the health outcomes of children and reduce stress among parents/caregivers.</li> </ul>	Low 7
<b>43</b>	Morris et al 2012, Uganda	National wide impact of combining a group-based psychosocial intervention with an existing emergency feeding program for internally displaced mothers.	Education, Enablement	237 displaced mother from Kitgum district in Northern Uganda	<b>Psychosocial</b> The Acholi Home Observation for Measurement of the Environment (50 items) was used to assess the impact of the intervention on mother's ability to stimulate her child. The Kitgum maternal mood scale to assess changes in maternal mood, The Knowledge, Attitudes and Practice (KAP) questionnaire (10 items).	<ul style="list-style-type: none"> <li>The interventions showed that mothers had greater involvement with their babies, more availability of play materials, and less sadness and worry.</li> <li>A proportion of the mothers chose to continue the intervention spontaneously with other mothers in their neighbourhoods.</li> <li>Further research needs to explore the longer-term impact on child growth and intellectual development as well as maternal mood.</li> </ul>	Medium 3

	Author, publication year, country	Study design and intervention	Behaviour change wheel intervention function	Setting and participants	Assessment	Outcome and Take-home message	Risk of Bias Score
44	Muehlhoff et al 2016, Malawi (and Cambodia)	Process review (focus groups and interviews) on an intervention that provided agricultural support and community- based nutrition education on improved infant and young child feeding.	Incentivisation, Education, Environmental restructuring	Focus groups in Malawi were conducted in selected villages involving a total of 170 stakeholders – mothers, caregivers, project stakeholders and government staff.	Interviews and focus groups conducted guided by 60 question on agriculture-nutrition linkage, community based nutrition education activities, family environment, socio-cultural factors influencing infant and young children feeding and involvement of service providers.	<ul style="list-style-type: none"> <li>Barriers included availability and access to nutritious, affordable foods, and adverse effects on mothers' time and childcare needs.</li> <li>Integrated programmes can ensure that caregivers with young children benefit from multiple sectors' work.</li> <li>Volunteers are a crucial resource for community based interventions.</li> </ul>	High -7
45	Mushaphi et al 2015, South Africa	Pre-test–post-test control group design. Nutrition Education Intervention Programme comprised ten topics emphasising healthy eating, hygiene and sanitation.	Education. Enablement.	Eight villages, Limpopo, South Africa. A total of 129 children aged 3 -5 years and 125 caregivers were included	Interviews with caregivers, on feeding practices and nutrition knowledge.  <b>Nutrition</b> Anthropometric measurements and blood samples (iron and vitamin A status) of children were taken.	<ul style="list-style-type: none"> <li>The nutritional status of children did not change significantly following intervention.</li> <li>According to the categories for indicators of iron status, the number of children who were in the 'adequate' category for serum iron, serum ferritin, serum transferrin and percentage transferrin saturation did not change in both groups at postintervention assessment</li> <li>Authors stated that no significant effect on nutrition status was possibly due to the</li> </ul>	Medium -2

Author, publication year, country	Study design and intervention	Behaviour change wheel intervention function	Setting and participants	Assessment	Outcome and Take-home message	Risk of Bias Score	
					interventions' short duration (12 months) and that food supplementation was not included.		
46	Mushaphi et al, 2017, South Africa	Pre-test–post-test control group design. Nutrition Education Intervention Programme comprised ten topics emphasising healthy eating, hygiene and sanitation.	Education. Enablement.	Eight villages, Limpopo, South Africa. A total of 129 children aged 3 -5 years and 125 caregivers were included	Interviews with caregivers, on feeding practices and nutrition knowledge.  <b>Nutrition</b> Anthropometric measurements and blood samples (iron and vitamin A status) of children were taken.	<ul style="list-style-type: none"> <li>Majority of children in both the experimental and control groups were given three meals or more per day, including starchy and protein rich foods at baseline and post intervention.</li> <li>Intake of mixed traditional dishes and some indigenous foods did improve significantly.</li> <li>the intake of mixed traditional dishes as well as the intake of the indigenous foods, stinging nettle, melder, wild peach, pineapple, dovhi, tshigume and thophi, increased significantly in both the experimental and control groups.</li> </ul>	Medium -2
47	Mutiso et al 2018, Kenya	Cross-sectional study to examine the effect of nutrition education and psychosocial on the	Education, Persuasion, Enablement	665 women of different categories: (1) pregnant women who were also caregivers of children below 2	<b>Psychosocial</b> Four constructs based on the Theory of Planned Behaviour to proxy psychosocial factors: attitudes, subjective norms, PBC, and knowledge.	<ul style="list-style-type: none"> <li>Nutrition education participation mother-to-mother club health talks had the greatest effect on the extent to which IYCF practices</li> </ul>	Medium 1

Author, publication year, country	Study design and intervention	Behaviour change wheel intervention function	Setting and participants	Assessment	Outcome and Take-home message	Risk of Bias Score	
	use of comprehensive IYFC practices among different women		years, (2) mothers of 0–5 months old children, (3) mothers of 6–23 months old children, and (4) potential mothers in Kenya.		are used, likely because these platforms provide opportunity to discuss, and overcome, some of barriers with peers within the communities. <ul style="list-style-type: none"> <li>This study also finds strong evidence that these nutrition education strategies jointly affect the expected number of IYCF practices used.</li> </ul>		
48	Ogunsile & Ogunsile 2016, Nigeria	Pre-test–Post-test quasi-experimental non-equivalent groups design. Nutrition education, using a board game. This was evaluated using questionnaires about knowledge of healthy eating	Environmental restructuring, Enablement, Training	One hundred and forty-three secondary school students selected from 4 local government areas in Ibadan, Nigeria. 143 (84 males and 59 females) adolescents with a mean age of 13.59 years	<b>Nutrition</b> Questionnaires: Adolescents' Knowledge of Healthy eating Questionnaire, Adolescents' Attitude to Healthy Eating Questionnaire, Adolescent's Practice of Healthy Eating Questionnaire. (n=143)	<ul style="list-style-type: none"> <li>Significant improvements on adolescents' knowledge, attitude and practice of healthy eating.</li> <li>Creative strategies should always be incorporated into nutrition education programmes for adolescents.</li> </ul>	Medium 4
49	Olney et al 2015, Burkina Faso	Evaluation of 2-year RCT enhanced-homestead food production. This focuses on agricultural production and behaviour change	Education, Training, Persuasion, Environmental restructuring, Modelling.	55 in eastern Burkina Faso with 55 all women with children 3–13months	<b>Nutrition</b> Household consumption of individual food groups was examined by using detailed consumption data (7-d recall) on 57 commonly consumed foods. Mothers dietary intake	<ul style="list-style-type: none"> <li>The intervention significantly improved several child outcomes, including wasting (marginal), diarrhoea, Hb, and anaemia, especially among the youngest children.</li> </ul>	Low 9

Author, publication year, country	Study design and intervention	Behaviour change wheel intervention function	Setting and participants	Assessment	Outcome and Take-home message	Risk of Bias Score	
	communication by dedicating land to women's production increase production and consumption of nutrient-rich foods and to generate additional income.			was assessed over a 24-h recall period, in which mothers were asked to report whether they had consumed foods from 18 different categories. Mother's height and weight were measured and BMI calculated. Household surveys were used to collect data at baseline to assess agriculture production, ownership and control over assets, mothers health, nutrition and hygiene-related knowledge, household and mothers dietary diversity, and mothers perceptions of intrahousehold processes related to women's empowerment. <b>Behaviour change</b> Women's empowerment, measured using a 30-question survey.	<ul style="list-style-type: none"> <li>No significant impacts on stunting or underweight prevalence.</li> <li>Specifically, the behaviour change communication, that enabled women's empowerment, and are likely to be transformational and to have long-lasting benefits for women and their families.</li> </ul>		
50	Olney et al 2016, Burkina Faso	Evaluation of 2-year RCT enhanced-homestead food production. This focuses on agricultural	Education, Training, Persuasion, Environmental restructuring,	55 in eastern Burkina Faso with 55 all women with children 3–13months	<b>Nutrition</b> Household consumption of individual food groups was examined by using detailed consumption data (7-d recall)	<ul style="list-style-type: none"> <li>Significant increases in mothers' fruit intake, small increases in meat/poultry intake, and dietary diversity.</li> </ul>	Low 9

Author, publication year, country	Study design and intervention	Behaviour change wheel intervention function	Setting and participants	Assessment	Outcome and Take-home message	Risk of Bias Score
	production and behaviour change communication by dedicating land to women's production increase production and consumption of nutrient-rich foods and to generate additional income.	Modelling.		<p>on 57 commonly consumed foods. Mothers dietary intake was assessed over a 24-h recall period, in which mothers were asked to report whether they had consumed foods from 18 different categories. Mother's height and weight were measured and BMI calculated. Household surveys were used to collect data at baseline to assess agriculture production, ownership and control over assets, mothers health, nutrition and hygiene-related knowledge, household and mothers dietary diversity, and mothers perceptions of intrahousehold processes related to women's empowerment.</p> <p><b>Behaviour change</b> Women's empowerment, measured using a 30-question survey.</p>	<ul style="list-style-type: none"> <li>• Prevalence of underweight was significantly reduced.</li> <li>• Although the changes in BMI did not differ between mothers in treatment and control villages, there was a marginally significant interaction indicating that underweight mothers had a greater increase in BMI than did mothers who were not underweight.</li> <li>• Mothers' overall empowerment score increased: meeting with women, purchasing decisions and health care decisions.</li> </ul>	
51	Nielsen et al 2019, Burkina Faso	Process evaluation of 2-year RCT enhanced-homestead food	Education, Training, Persuasion,	55 in eastern Burkina Faso with 55 all women with	<p><b>Nutrition</b> Household consumption of individual food groups was</p> <ul style="list-style-type: none"> <li>• Gaps included input constraints, knowledge gaps among community agents in</li> </ul>	Low 6

Author, publication year, country	Study design and intervention	Behaviour change wheel intervention function	Setting and participants	Assessment	Outcome and Take-home message	Risk of Bias Score
	production. This focuses on agricultural production and behaviour change communication by dedicating land to women's production increase production and consumption of nutrient-rich foods and to generate additional income.	Environmental restructuring, Modelling.	children 3–13months	<p>examined by using detailed consumption data (7-d recall) on 57 commonly consumed foods. Mothers dietary intake was assessed over a 24-h recall period, in which mothers were asked to report whether they had consumed foods from 18 different categories. Mother's height and weight were measured and BMI calculated.</p> <p>Household surveys were used to collect data at baseline to assess agriculture production, ownership and control over assets, mothers health, nutrition and hygiene-related knowledge, household and mothers dietary diversity, and mothers perceptions of intrahousehold processes related to women's empowerment.</p> <p><b>Behaviour change</b> Women's empowerment, measured using a 30-question survey.</p>	<p>agriculture and young child nutrition practices, and lower than expected activity by community volunteers.</p> <ul style="list-style-type: none"> <li>• In response, staff developed measures to overcome water constraints and expand vegetable and poultry production, retrained volunteers in certain techniques of food production and counselling for nutrition behaviour change, added small incentives to motivate volunteers, and shaped both immediate and long-term changes to the programme model.</li> <li>• Collaboration between researchers and implementers can improve programme effectiveness, project staff capacity, and advance delivery science.</li> </ul>	



	<b>Author, publication year, country</b>	<b>Study design and intervention</b>	<b>Behaviour change wheel intervention function</b>	<b>Setting and participants</b>	<b>Assessment</b>	<b>Outcome and Take-home message</b>	<b>Risk of Bias Score</b>
<b>52</b>	Passarelli et al, 2020, Ethiopia	A cluster RCT on chicken production intervention with nutrition-sensitive behaviour change communication	Environmental restructuring, Enablement, Persuasion.	829 children aged 0–36 months at baseline from rural agricultural villages in 4 regions of Ethiopia: Amhara; Oromia; Southern Nations, Nationalities, and Peoples’ Region; and Tigray.	<p><b>Nutrition</b> Anthropometric measurements: HAZ, WAZ, WHZ at 9 (midline) and 18 months. MDD for children.</p> <p><b>Psychosocial</b> Women’s input into decision making related to chickens adapted from the Women’s Empowerment in Agriculture Index.</p> <p><b>Other</b> Questionnaire concerning chicken production and household nutrition and health was administered to the woman</p>	<ul style="list-style-type: none"> <li>The chicken production intervention without behaviour change communication had higher HAZ and WAZ at endline than the controls. The chicken intervention with behaviour change communication showed similar trends at endline but were not significantly different to the control, but children had higher MDD and egg consumption.</li> <li>A chicken production intervention with or without nutrition-sensitive behaviour change communication may have benefited child nutrition and did not increase morbidity.</li> </ul>	Low 6
<b>53</b>	Ruel-Bergeron et al 2019a, Malawi	Monitoring and evaluation quasi-experimental study design, with cross-sectional baseline. Daily, fortified, small-quantity lipid-based nutritional	Training, Persuasion, Enablement.	Mother and their children aged 6–23 months in two neighbouring, rural districts in Malawi.	<p><b>Nutrition</b> Anthropometric measurements: children’s length, MUAC, and head circumference, BMI, LAZ, WLZ. MMF, MDD. Caregivers’ IYCF knowledge related to breastfeeding, complementary</p>	<ul style="list-style-type: none"> <li>The absence of inclusion of an older cohort of children (24–41 months) in the impact evaluation limited ability to measure program impact on children who had received full exposure.</li> <li>Ongoing training, motivation, supervision, and</li> </ul>	High -6

Author, publication year, country	Study design and intervention	Behaviour change wheel intervention function	Setting and participants	Assessment	Outcome and Take-home message	Risk of Bias Score	
	Supplement and behaviour change messages around optimal infant and young child feeding (IYCF) and water, sanitation, and hygiene.			feeding, and feeding during illness was assessed and a knowledge score calculated.	<p>encouragement of care group volunteers is critical to program success and a key element for high retention of participants throughout the life of the program.</p> <ul style="list-style-type: none"> <li>Investing in understanding the country and program context, including the behavioral patterns of the population is necessary for implementing the most efficient M&amp;E systems and reaching the target population.</li> </ul>		
54	Ruel-Bergeron et al 2019b, Malawi	Process evaluation quasi-experimental study design, with cross-sectional baseline. Daily, fortified, small-quantity lipid-based nutritional Supplement and behaviour change messages around optimal infant and young child feeding (IYCF) and water,	Training, Persuasion, Enablement.	Mother and their children aged 6–23 months in two neighbouring, rural districts in Malawi.	Program monitoring and evaluation data were used to measure program recruitment, reach, and fidelity. Structured direct observations and knowledge questionnaires with program volunteers measured quality aspects of program fidelity. The number of times activities were done correctly was used to tabulate proportions used to represent program functioning.	<ul style="list-style-type: none"> <li>Half (49.5%) of eligible children redeemed program benefits by 8 months of age during the first 4 years of program implementation.</li> <li>Knowledge of IYCF, WASH, and SQ-LNS messages by volunteers was &gt;85% for most messages, except ability to list the 6 food groups (35.7%).</li> <li>Structured direct observations of SQ-LNS distributions indicated high fidelity to program design, whereas those of household-level</li> </ul>	Medium -3

Author, publication year, country	Study design and intervention	Behaviour change wheel intervention function	Setting and participants	Assessment	Outcome and Take-home message	Risk of Bias Score	
	sanitation, and hygiene.				counselling sessions revealed lack of age-appropriate messaging. <ul style="list-style-type: none"> <li>Program reach showed participation in monthly distribution sessions of 81.0%, group counselling of 93.3%, and individual-level counselling of 36.9%.</li> </ul>		
55	Christian et al 2020, Malawi	Impact evaluation quasi-experimental study design, with cross-sectional baseline. Daily, fortified, small-quantity lipid-based nutritional Supplement and behaviour change messages around optimal infant and young child feeding (IYCF) and water, sanitation, and hygiene.	Training, Persuasion, Enablement.	Mother and their children aged 6–23 months in two neighbouring, rural districts in Malawi.	<b>Nutrition</b> Anthropometric measurements: children’s length, MUAC, and head circumference, BMI, LAZ, WLZ. MMF, MDD. Caregivers’ IYCF knowledge related to breastfeeding, complementary feeding, and feeding during illness was assessed and a knowledge score calculated.	<ul style="list-style-type: none"> <li>No differences in mean LAZ or prevalence of stunting were found at endline. However, mean weight, WLZ, and MUAC were higher at endline by 150 g, 0.22, and 0.19 cm, respectively, in the program compared with the comparison district (all P &lt; 0.05).</li> <li>Weekly reports of high fever and malaria were also lower by 6.4 and 4.7 percentage points, respectively, in the program compared with the comparison district.</li> <li>There was no impact on anemia.</li> <li>Children’s dietary diversity score improved by 0.17, and</li> </ul>	High -7

Author, publication year, country	Study design and intervention	Behaviour change wheel intervention function	Setting and participants	Assessment	Outcome and Take-home message	Risk of Bias Score	
					caregivers' infant and young child feeding and hand-washing practices improved by 8–11% in the program compared with the comparison district.		
56	Saaka et al 2011, Ghana	A pre-test/post-test Evaluation (surveys) design of the Catholic Relief Services' Development Assistance Programme which promoted infant feeding practices, community health seeking behaviour, food supplies and support groups.	Education, Training.	The programme included women and children living in food insecure households in rural farming communities. Communities were located in select districts in three northern regions of Ghana covered 221 beneficiary communities. Evaluation included 30 cluster community and 16 interviews were conducted in each cluster	A pre-test/post-test design involving two cross sectional surveys at baseline and follow-up surveys were used to determine the outcome/impact of the programme. Interviews were conducted using pre-designed questionnaires.  <b>Nutrition</b> Pre-school children's weight and height were measured.	<ul style="list-style-type: none"> <li>The programme reduced chronic malnutrition by 1.5 percentage points per year, and empowered individuals and communities to adopt positive health behaviours.</li> <li>The programme showed improvement over time for health-seeking behaviours, practices and coverage of health and nutrition services.</li> <li>Community involvement and ownership were central to the continuity of health activities, where individuals championed and promoted the programme.</li> </ul>	High -7

Author, publication year, country	Study design and intervention	Behaviour change wheel intervention function	Setting and participants	Assessment	Outcome and Take-home message	Risk of Bias Score	
			(n=480) 10 baseline survey interviews per cluster (n=300).				
57	Saaka et al, 2021, Ghana	Two-arm, quasi-experimental, with pre- and post-test observations to evaluate radio health/nutrition education intervention in Ghana	Persuasion, Modelling, Education	712 mothers with children aged 6–36 months from Northern Ghana	<p><b>Nutrition</b></p> <p>Anthropometric measures were converted to indices of length-for-age (LAZ), weight-for-age (WAZ) and weight-for length (WLZ) minimum meal frequency (MMF), the minimum dietary diversity (MDD) and the minimum acceptable diet (MAD)</p> <p><b>Psychosocial</b></p> <p>Nutrition knowledge, attitudes and practices (KAP)</p>	<ul style="list-style-type: none"> <li>• Minimum dietary diversity and the minimum acceptable diet improved significantly</li> <li>• Nutrition related knowledge, attitudes and practices scores were significantly higher</li> <li>• The intervention did not have significant effects on the nutritional status as measured by height-for-age Z-score or weight-for-height Z-score</li> </ul>	Medium 3

	<b>Author, publication year, country</b>	<b>Study design and intervention</b>	<b>Behaviour change wheel intervention function</b>	<b>Setting and participants</b>	<b>Assessment</b>	<b>Outcome and Take-home message</b>	<b>Risk of Bias Score</b>
58	Skar et al, 2019, Mozambique	Psychosocial support intervention based on the International Child Development Programme integrated with a health and nutritional supplement.	Training, Enablement, Modelling,	350 children aged 1–18years were recruited from 12 child centers for orphans and other vulnerable children in the Maputo area, Mozambique.	<p><b>Nutrition</b> Age, gender, height, and weight of the children at the intervention centers were measured before and after the intervention.</p> <p><b>Psychosocial</b> Child-Reported Strengths and Difficulties questionnaire. Professional caregivers from the intervention centers completed an open-ended response survey about their work at the centers and whether they noticed any changes in themselves, the children at the centers, or at the child centers in general after receiving the integrated programme.</p>	<ul style="list-style-type: none"> <li>• Improvement among 93.5 percent of the children categorized as malnourished before the intervention.</li> <li>• Children’s self-reported data on strengths and difficulties (N = 79) suggest significant increases in prosocial behaviour in the intervention group.</li> <li>• Caregivers (N = 40) reported strengthened relationships, improved communication, and improved nutritional menus within the intervention centers.</li> </ul>	Medium -2

	<b>Author, publication year, country</b>	<b>Study design and intervention</b>	<b>Behaviour change wheel intervention function</b>	<b>Setting and participants</b>	<b>Assessment</b>	<b>Outcome and Take-home message</b>	<b>Risk of Bias Score</b>
<b>59</b>	Santoso et al, 2021, Tanzania	Cluster-randomized trial nutrition-sensitive agroecology education Intervention in Tanzania	Education, Environmental restructuring, Persuasion, Training, Incentivisation, Modelling	One man and 1 woman “mentor farmer” were elected from each intervention village. 591 households from Singida Rural District, in Tanzania. Surveyed infants 2 years and younger.	<p><b>Nutrition</b> Dietary Diversity score, minimum meal frequency HAZs and WHZs Household Food Insecurity Access Scale</p> <p><b>Psychosocial</b> Women’s Empowerment in Agriculture Index Perceived Social Support Scale</p>	<ul style="list-style-type: none"> <li>• After 2 growing seasons, the intervention improved children’s dietary diversity score by 0.57 food groups</li> <li>• The percentage of children achieving minimum dietary diversity (<math>\geq 4</math> food groups) increased by 9.9 percentage points during the postharvest season</li> <li>• The intervention significantly reduced household food insecurity</li> <li>• No significant impact on child anthropometry</li> <li>• The intervention also improved a range of sustainable agriculture, women’s empowerment, and women’s well-being outcomes</li> </ul>	Low 5
<b>60</b>	Shapu et al, 2021, Nigeria	Cluster randomized controlled trial of the triple benefit health education guided by the information, motivation, behavioral skill (IMB) theory in Nigeria	Education	Adolescent girls aged 10 to 19 years old in Maiduguri, Borno state, Nigeria	<p><b>Nutrition</b> Food security questions</p> <p><b>Psychosocial</b> Knowledge and attitude questionnaires was adapted from the Food and Agricultural Organization of the United Nations</p>	<ul style="list-style-type: none"> <li>• Significant difference in knowledge, attitude and food security at three and six-months post intervention.</li> <li>• The triple benefit health education intervention package employed in this study can serve as an intervention tool to combat</li> </ul>	Low 9

	Author, publication year, country	Study design and intervention	Behaviour change wheel intervention function	Setting and participants	Assessment	Outcome and Take-home message	Risk of Bias Score
61	Steyn et al 2015; South Africa	A three-year cluster RCT at primary schools in low socioeconomic settings. Action planning process with teachers to identify their own priorities, provided with South African food-based dietary guidelines. Children completed a questionnaire on nutrition knowledge, self-efficacy and behavioural items.	Training, Modelling, Education	Participants were year four children, 9 years old (n=500) at eight schools in the intervention group and eight in the control group (n=498), in the Western Cape Province of South Africa.	<b>Nutrition and Psychosocial</b> Knowledge, Self-Efficacy and Behaviour (KAP) Questionnaire (n=717). Nutrition knowledge had 29 items, nutrition behaviour has 8 items and self-efficacy had 12 items.	<ul style="list-style-type: none"> <li>• The estimated dietary diversity score intervention effect over the two years was not significant.</li> <li>• Food groups least consumed were eggs, fruit and vegetables.</li> <li>• Unhealthy snack consumption in terms of frequency of snack items consumed did not improve significantly in intervention or control schools.</li> </ul>	Medium 2



	<b>Author, publication year, country</b>	<b>Study design and intervention</b>	<b>Behaviour change wheel intervention function</b>	<b>Setting and participants</b>	<b>Assessment</b>	<b>Outcome and Take-home message</b>	<b>Risk of Bias Score</b>
<b>62</b>	De Villiers et al 2016, South Africa	A three-year cluster RCT at primary schools in low socioeconomic settings. Action planning process with teachers to identify their own priorities, provided with South African food-based dietary guidelines. Children completed a questionnaire on nutrition knowledge, self-efficacy and behavioural items.	Training, Modelling, Education	Participants were year four children, 9 years old (n=500) at eight schools in the intervention group and eight in the control group (n=498), in the Western Cape Province of South Africa.	<b>Nutrition and Psychosocial</b> Knowledge, Self-Efficacy and Behaviour (KAP) Questionnaire (n=717). Nutrition knowledge had 29 items, nutrition behaviour has 8 items and self-efficacy had 12 items.	<ul style="list-style-type: none"> <li>The intervention improved nutrition knowledge and self-efficacy significantly in primary school children, but it did not improve their eating behaviour.</li> <li>A program mostly driven by school staff and with specific guidelines on how to integrate it with the curriculum could improve nutrition knowledge and self-efficacy in children.</li> </ul>	Medium 2
<b>63</b>	Tamiru et al 2017, Ethiopia	Quasi experimental evaluation of the effectiveness of school-based nutrition education using peer-led, health promotion through school media and health clubs.	Education. Modelling.	Four primary schools (2 rural, 2 urban) in Jimma Zone, Oromia Regional State, Ethiopia.	Focus groups with children and interviews with school principals and relevant teachers. Observations conducted of school environment and review of the nutrition policy.	<ul style="list-style-type: none"> <li>Significant improvements in food variety between food secure and insecure households, and improvements in animal dietary intake due to intervention.</li> <li>School based nutrition education programmes should be implemented in comprehensive school health programmes to reach students and their families.</li> </ul>	Medium 4

	<b>Author, publication year, country</b>	<b>Study design and intervention</b>	<b>Behaviour change wheel intervention function</b>	<b>Setting and participants</b>	<b>Assessment</b>	<b>Outcome and Take-home message</b>	<b>Risk of Bias Score</b>
<b>64</b>	Tariku et al 2015, Ethiopia	Cluster-RCT of Health Belief Model based education on complimentary feeding practices of mothers	Education, Training, Incentivisation.	180 households with children 6–18 months of age were selected by a systematic sampling method from 21 rural Kebeles of Ethiopia	<p><b>Nutrition</b> Interviewing using questionnaires for mothers about feeding practice of the infants and children. Complementary feeding practices were measured by the following indicators: meal frequency; the proportion of infants and young children consuming a variety of food group for the previous 24 hours; and MDD.</p> <p><b>Psychosocial</b> Health belief model constructs were tested using a questionnaire (10 items)</p>	<ul style="list-style-type: none"> <li>• Diet diversity significantly increased, including improvements in food groups were most noticeable as legumes &amp; nuts.</li> <li>• Intervention based on theory are successful at improving complimentary feeding.</li> <li>•</li> </ul>	Medium 4
<b>65</b>	Mulualem et al, 2016 Ethiopia	Cluster-RCT of Health Belief Model based education on complimentary feeding practices of mothers	Education, Training, Incentivisation.	180 households with children 6–18 months of age were selected by a systematic sampling method from 21 rural Kebeles of Ethiopia	<p><b>Nutrition</b> Interviewing using questionnaires for mothers about feeding practice of the infants and children. Complementary feeding practices were measured by the following indicators: meal frequency; the proportion of infants and young children consuming a variety of food</p>	<ul style="list-style-type: none"> <li>• Significant improvements in children’s mean weight, weight for height, and weight for age occurred in the intervention site only.</li> <li>• The KAP of mothers on pulse-incorporated complementary feeding and the nutritional status of their young children measured in terms of wasting and underweight prevalence</li> </ul>	Low 6

Author, publication year, country	Study design and intervention	Behaviour change wheel intervention function	Setting and participants	Assessment	Outcome and Take-home message	Risk of Bias Score
				group for the previous 24 hours; and MDD.  <b>Psychosocial</b> Health belief model constructs were tested using a questionnaire (10 items)	were shown to be improved through an action-oriented and recipe-based nutrition education intervention.	
66	Thuita et al 2015, Kenya	Evaluation study on intervention on engaging fathers or grandmothers in improving mother child feeding practice. This included peer education dialogue groups with fathers and grandmothers.	Education, Incentivisation, Training, Modelling.  The selected intervention area for fathers and grandmothers in Western Kenya. 177 fathers and 156 grandmothers in intervention. For evaluation, four focus groups were held with fathers and four with grandmothers. 14 interviews were held with Ministry Of Health officers, community and religious leaders, women's group leaders, and community health extension workers.	The process evaluation included in-depth interviews with father mentors (n=7) and grandmother mentors (n=10) and focus groups with fathers and grandmothers (8 and 10 FGDs, respectively). Baseline survey to assess knowledge and practices related to maternal nutrition and infant and young child feeding and social support provided to mothers by fathers and grandmothers about the care and feeding of young children. Post intervention survey assessed maternal, infant, and young child nutrition knowledge and practices; maternal and child dietary intake based on 24-hour and	<ul style="list-style-type: none"> <li>Men typically provide advice on starchy foods, such as maize and maize meal, and animal protein while mothers and grandmothers often give advice on fruits and vegetables to families.</li> <li>Recommendations for future interventions should make use of existing community level structures allowing groups to select their leaders, and design interventions informed and guided by gender roles.</li> <li>Engaging father, grandmothers and mother would enhance the impact.</li> </ul>	High -9

Author, publication year, country	Study design and intervention	Behaviour change wheel intervention function	Setting and participants	Assessment	Outcome and Take-home message	Risk of Bias Score	
67	Mukuria 2016, Kenya	Evaluation study on intervention on engaging fathers or grandmothers in improving mother child feeding practice. This included peer education dialogue groups with fathers and grandmothers.	Education, Incentivisation, Training, Modelling.	The selected intervention area for fathers and grandmothers in Western Kenya. 177 fathers and 156 grandmothers in intervention. For evaluation, four focus groups were held with fathers and four with grandmothers. 14 interviews were held with Ministry Of Health officers, community and religious leaders, women's group leaders, and community health extension workers.	seven-day recalls; and (social support provided to mothers by fathers and grandmothers). The process evaluation included in-depth interviews with father mentors (n=7) and grandmother mentors (n=10) and focus groups with fathers and grandmothers (8 and 10 FGDs, respectively). Baseline survey to assess knowledge and practices related to maternal nutrition and infant and young child feeding and social support provided to mothers by fathers and grandmothers about the care and feeding of young children. Post intervention survey assessed maternal, infant, and young child nutrition knowledge and practices; maternal and child dietary intake based on 24-hour and seven-day recalls; and (social support provided to mothers by fathers and grandmothers).	<ul style="list-style-type: none"> <li>As the number of social support actions increased, the likelihood of a mother reporting that she had fed her infant the minimum number of meals in the past 24 hours also increased between baseline and endline.</li> <li>When taking into account the interaction effects of intervention area and increasing social support over time, a significant association was found in the grandmother intervention area on dietary diversity</li> <li>No significant effects were found on minimum acceptable diet.</li> </ul>	High -9

	<b>Author, publication year, country</b>	<b>Study design and intervention</b>	<b>Behaviour change wheel intervention function</b>	<b>Setting and participants</b>	<b>Assessment</b>	<b>Outcome and Take-home message</b>	<b>Risk of Bias Score</b>
<b>68</b>	Tomlinson et al, 2020, South Africa,	RCT to promote maternal sensitivity and maternal–child attachment related to improve infant feeding.	Training, Enablement, Modelling.	449 women assessed during pregnancy, and then when their infant was 2, 6, 12 and 18months old in a peri-urban area with high levels of poverty, near Cape Town, South Africa	<p><b>Nutrition</b> Mothers were filmed and observed feeding their baby for 5 minutes. Recordings were rated on five dimensions of maternal sensitivity and on maternal Intrusiveness.</p> <p><b>Other</b> Mothers were interviewed to collect demographic details, living circumstances and obstetric, delivery and post-birth information, including whether or not they were breastfeeding at 2 and 6months post-natally Mental health assessment to determine level of depressive symptoms</p>	<ul style="list-style-type: none"> <li>• During a feeding interaction, maternal sensitivity was significantly improved among non-breastfeeding mothers who received the intervention.</li> <li>• Particularly, maternal responsiveness to infant cues and synchronous interactions was higher among non-breastfeeding intervention mothers compared to control group mothers.</li> <li>• The results also show that non-breastfeeding mothers who received the intervention were significantly less intrusive in their interactions with their infants.</li> <li>• This suggest that the intervention offered a protective effect for non-breastfeeding mothers.</li> </ul>	Medium 1
<b>69</b>	Walton et al 2017, Kenya	Cross sectional study design Nutrition education intervention was developed to enhance women’s nutrition	Modelling, Education, Persuasion	Study was located, Central Province, Kenya. The Mukurwe-ini study group consisted of 88 women in four dairy membership-	Data was collected using face-to-face interviews, which were pre-intervention survey on household socio-demographic and food security data.	<ul style="list-style-type: none"> <li>• The approach for women’s nutrition education positively influenced nutrition knowledge, practices and diet quality.</li> </ul>	Low 8

Author, publication year, country	Study design and intervention	Behaviour change wheel intervention function	Setting and participants	Assessment	Outcome and Take-home message	Risk of Bias Score	
	knowledge and food skills		duration categories from a previous study and non-dairy member women. The intervention (n=55) and control (n=56).	Pre- and post-intervention, women's food intake data were collected using a single four-pass 24-hour diet recall. Nutrition knowledge and practices data was collected using an adapted structured questionnaire.	<ul style="list-style-type: none"> <li>Increased dietary diversity was dependent on dairy group membership.</li> <li>Some intervention effects were dependent on poverty reduction, but all women were able to make positive dietary changes when informed.</li> <li>Need to examine long term impacts of nutrition education interventions.</li> </ul>		
70	Workicho et al, 2021, Ethiopia	Quasi-experimental design social and behaviour change communication in Ethiopia	Modelling, Persuasion, Education	Pregnant and/or lactating women from Amhara and Oromia regions of Ethiopia	<b>Nutrition</b> Minimum Dietary Diversity (MDD) Minimum Meal Frequency (MMF) Minimum Acceptable Diet (MAD) Women's diet diversity was based on a 24-h qualitative recall.	<ul style="list-style-type: none"> <li>13.6% change in iron folic acid (IFA) intake for 3 months</li> <li>Not statistically significant but large to moderate positive changes in child minimum diet diversity (20%), minimum acceptable diet (18%) and women diet diversity (7.9%)</li> </ul>	Medium -1
71	Yetnayyet et al 2017, Ethiopia	A pre-test post-test controlled intervention study Nutrition education intervention based on the Health Belief Model, and using pulses, to improve knowledge, attitude	Enablement, Training, Education	200 randomly selected women from Southern Ethiopia. All women of reproductive age (15 – 49 years).	Food frequency questionnaire with constructs from the Health Belief Model and Knowledge, Attitude and practice items (30 items).	<ul style="list-style-type: none"> <li>Significant improvement in the mean knowledge, attitude, and practice scores in the intervention group compared to control group.</li> <li>Significant improvement in the scores of Health Belief Model constructs.</li> </ul>	Medium 3

Author, publication year, country	Study design and intervention	Behaviour change wheel intervention function	Setting and participants	Assessment	Outcome and Take-home message	Risk of Bias Score
	and practice of women of reproductive age				<ul style="list-style-type: none"> <li>The success of this intervention may be due to using pulses processing and recipes demonstrations repeatedly, involving peer learning and experience sharing.</li> </ul>	

165

166 Abbreviations include: ANC= Antenatal care, ASFs= Animal source foods, BMI=Body mass index, CPNP= Community-based Participatory Nutrition, DDS=

167 Dietary Diversity Score, FCS= Food Consumption Score, FFQ= Food frequency questionnaire, HAZ= Height for Age Z score, Hb= Haemoglobin, HBS

168 =Household Budget Survey, HEWs= Health extension workers, IDDS= Individual Dietary Diversity Score, IPC= Interpersonal communication, IYCF= Infant and

169 young child feeding, KAP= Knowledge Attitude Practice, LAZ= Length for Age Z score, MAD= Minimum acceptable diet, MDD= Minimum diet diversity,

170 MMF= Minimum meal frequency, MUAC= Mid-Upper Arm Circumference, SBCC= Social and Behaviour Change Communication, WAZ= Weight for Age Z

171 score, WHZ= Weight for Height Z score, WLZ= Weight to Length Z score, UCT= Unconditional Cash Transfer, WHO=World Health Organisation, VAWI

172 =Violence Against Women instrument

173 **Anthropometric markers**

174 A mother and child lipid supplementation RCT, graded as medium quality, combined with maternal  
175 nutrition counselling in Madagascar reported an increase in infants' length-for-age z-scores (LAZ) of  
176 0.210–0.216SD and stunting reduced by 8.2–9.0% compared to the control<sup>(20, 75)</sup>. Two similar  
177 medium-low-quality interventions in Malawi found mixed results, where one intervention had no  
178 effect on infant LAZ scores or stunting prevalence, but both interventions found significantly higher  
179 weight-for-length z-score (WLZ) and mid-upper arm circumference at 18 months to three years  
180 follow-up<sup>(77, 78, 82, 85)</sup>. These results have to be viewed with caution, however, since the trial was low  
181 quality being not randomised or blinded. A high quality intervention that used Theory of Planned  
182 Behaviour constructs (attitudes, subjective norm, and perceived behavioural control) to predict  
183 school children's behavioural intention to eat pulses in Ethiopia reduced wasting prevalence from  
184 17% to 5% ( $p < 0.001$ ) but had no effect on stunting prevalence<sup>(42)</sup>. An agricultural production and  
185 behaviour change communication intervention for mothers in Burkina Faso, the study of which was  
186 rated high quality, significantly improved child wasting, diarrhoea, haemoglobin levels and rates of  
187 anaemia, especially among the youngest, as well as reducing underweight prevalence<sup>(54, 56, 109)</sup>. Two  
188 other high-quality studies of interventions that provided food rations or vouchers and behaviour  
189 change communication to mothers in Burundi and Ethiopia, showed reduced prevalence of child  
190 stunting in the intervention compared to the control arm<sup>(48-52, 70, 111)</sup>. Behaviour change  
191 communication and unconditional cash transfers intervention which was deemed medium quality,  
192 to mothers in Togo reduced low birthweight (<2,500g) and protected infant height-for-age z-scores  
193 (HAZ) in the intervention arm compared to HAZ decline in the control arm, but had no impact on  
194 stunting<sup>(61)</sup>. One chicken production intervention, rated high quality, improved infant HAZ and  
195 weight-for-age z-scores (WAZ) both with and without behaviour change communication in  
196 Ethiopia<sup>(64)</sup>. A RCT, graded high quality, that provided families with eggs and behaviour change  
197 communication significantly decreased the prevalence of infant wasting and underweight<sup>(74)</sup>. An



198 agricultural (tools and agricultural extension workers), behaviour change communication and  
199 nutrition counselling intervention, graded high quality, in Ethiopia reduced prevalence of stunting  
200 (36.3% to 22.8%) in children aged 6–23 months<sup>(67, 68, 76)</sup>. A psychosocial intervention that promoted  
201 infant feeding practices improved food supplies and engaged religious support groups in Ghana  
202 reduced HAZ by 1.5% / year<sup>(91)</sup>. This intervention was deemed low quality as it was not an RCT and  
203 also lacked quality behaviour change measures. In Ethiopia, a nutrition counselling intervention,  
204 graded high quality and based on Social Cognitive Theory and Theory of Planned Behaviour, led to a  
205 17% lower prevalence of undernutrition among pregnant women compared with the control<sup>(62)</sup>. A  
206 high quality RCT based on behaviour change communication and agricultural support in Malawi had  
207 no significant impact on pre-schooler growth, but reduced stunting among younger siblings<sup>(44)</sup>. A  
208 medium rated quality education intervention in Ghana based on Social Cognitive Theory found  
209 marginal difference in HAZ and WAZ between school children in each treatment arm<sup>(84)</sup>. One RCT,  
210 graded high-quality, that trained local Tanzanian women and farmers to deliver agricultural  
211 education to households as well as them receiving seedlings did not find significantly improved  
212 infant HAZs and WHZs scores<sup>(72)</sup>. Two lipid supplementation interventions, graded as medium-high  
213 quality, which also included behaviour change communication had no significant impact on the  
214 prevalence of infant undernutrition, weight for length, or mid-upper arm circumference in Burkina  
215 Faso<sup>(60)</sup> or Mali<sup>(63)</sup>, but in Mali it was found that children in the intervention arm were 29% less likely  
216 to experience a first acute malnutrition incident.

## 217 **Dietary outcomes**

218 A behaviour change communication intervention, graded as high-quality, among pre-schoolers in  
219 Malawi increased intake of energy, protein and micronutrients<sup>(44)</sup>. One RCT of an intervention  
220 providing behaviour change communication and food rations, rated as high quality, increased energy  
221 consumption in pregnant women and mothers from Burundi<sup>(48, 49, 51, 52, 111)</sup>. Two interventions, graded  
222 as medium-high quality and based on nutrition education, found no significant changes in the

223 nutrient intake of children in Malawi and South Africa<sup>(44, 88, 89)</sup>. Yet one RCT rated as medium-quality  
224 found significant infant dietary diversity improvement with a combined nutrition education and  
225 counselling approach in Malawi<sup>(71)</sup>. Three low quality lipid supplementation studies with behaviour  
226 change communication found no impact on maternal haemoglobin concentration and anaemia in  
227 Malawi<sup>(77, 78, 82)</sup>. These interventions were rated low quality due to the lack of RCT methods including  
228 randomisation and blinding. Yet another similar intervention graded as medium quality in Malawi  
229 found significant increases in dietary diversity of infants at 18 months follow up<sup>(85)</sup>. Two low-medium  
230 rated quality psychosocial interventions increased pregnant women's and mothers' dietary diversity,  
231 and household food consumption in the Central African Republic<sup>(107)</sup> and Ethiopia<sup>(79-81)</sup>. One  
232 intervention underpinned by Social Cognitive Theory and the Theory of Planned Behaviour, graded  
233 high-quality, had school children in South Africa meeting 5-a-day fruit and vegetable guidelines<sup>(45, 46)</sup>.  
234 Two behaviour change communication interventions, graded high quality, increased maternal  
235 dietary diversity, and the proportion of children consuming >4 food groups in Burundi<sup>(48, 49, 51, 52, 111)</sup>,  
236 and egg consumption in Ethiopia<sup>(79-81)</sup>. One behaviour change communication RCT, deemed medium-  
237 quality, found increased infant consumption of milk, but this was not significant<sup>(69)</sup>. Total household  
238 food consumption increased for communities in Burkina Faso<sup>(54, 56, 109)</sup>, for pre-schoolers and infants  
239 in Malawi<sup>(44, 77, 78, 82)</sup> and Ethiopia<sup>(59, 67, 68, 76)</sup>, and mother and daughter pairs in Nigeria<sup>(97)</sup>. These  
240 interventions were deemed medium to high quality studies due to their rigorous RCT methods. A  
241 intervention graded medium-quality that delivered radio dramas on maternal nutrition in Ghana  
242 found improved infant dietary diversity<sup>(86)</sup>. One RCT, deemed high-quality, that trained local  
243 Tanzanian women and farmers to deliver agricultural education to households as well as them  
244 receiving seedlings found significantly improved infant dietary diversity and food insecurity<sup>(72)</sup>. A  
245 intervention graded medium quality that delivered behaviour change communication and  
246 unconditional cash transfers to mothers in Togo improved household food security<sup>(61)</sup>. Interventions  
247 graded medium quality that included nutrition education and cooking demonstrations increased diet  
248 diversity scores of women and children in Ethiopia<sup>(42)</sup> and South Africa<sup>(88, 89)</sup>. These interventions

249 were deemed medium quality due to the self-reported measures. Information and education  
250 interventions with medium to low quality had no effect on dietary diversity<sup>(84, 96)</sup> and strategies to  
251 increase self-efficacy had no effect on diet intake in primary school children<sup>(40, 41, 87)</sup>.

## 252 **Psychosocial outcomes**

253 Interventions aimed to address psychosocial outcomes including nutrition knowledge (n=17)<sup>(40-42, 44-</sup>  
254 <sup>46, 58, 61, 71, 73, 84, 90, 94, 96, 97, 103, 104)</sup>, practices (e.g. food/recipes preparation, healthy eating)(n=5)<sup>(42, 90, 94,</sup>  
255 <sup>96, 98)</sup>, attitudes (n=6)<sup>(42, 45, 46, 62, 90, 94)</sup>, intentions (n=4)<sup>(45, 46, 62, 99)</sup> and confidence in eating healthy food  
256 (n=1)<sup>(104)</sup>. These were variously underpinned by behaviour change theory(n=10)<sup>(42, 45, 46, 58, 62, 84, 90, 94, 96,</sup>  
257 <sup>98)</sup>, strategies to increase self-efficacy (n=5)<sup>(40-42, 87, 99)</sup>, behaviour change communication (n=2)<sup>(44, 61)</sup> or  
258 behaviour change techniques (n=1)<sup>(97)</sup>. In two interventions rated high quality and one rated low  
259 quality, women's capability to feed themselves and their children more nutritious food increased,  
260 including interventions based on behaviour change communication in Burkina Faso<sup>(54, 56, 109)</sup> and  
261 Zambia<sup>(83, 110)</sup>, and a psychosocial intervention in Ghana<sup>(91)</sup>. Five medium-high rated quality  
262 psychosocial interventions achieved positive psychosocial outcomes, which improved caregiver  
263 feeding behaviours. This included increasing women's psychological well-being in the Central African  
264 Republic<sup>(107)</sup> and Uganda<sup>(53)</sup>. Caregivers of children with cerebral palsy in Tanzania improved their  
265 feeding skills<sup>(70)</sup>. Caregiver relationships and communication improved leading to children's prosocial  
266 behaviour in Mozambique<sup>(65)</sup>. Mother's expression of love and responsiveness during feeding  
267 interactions increased in South Africa<sup>(66)</sup>. An intervention graded medium-quality which delivered  
268 radio dramas on maternal nutrition in Ghana found increased mother's knowledge of feeding  
269 practices<sup>(86)</sup>. Qualitative evaluations identified barriers to the success of behavioural interventions  
270 including availability of, and access to, nutritious and affordable foods and less time for mothers to  
271 care for children<sup>(106)</sup>.

## 272 **Behavioural intervention components**

273 Interventions were coded on the basis of involving one or more Behaviour Change Wheel  
274 intervention functions (**Error! Reference source not found.**)<sup>(28)</sup>. Functions (Appendix C) included  
275 education(n=51)<sup>(20, 39-41, 44-47, 49, 51-54, 56, 58, 69-75, 79-81, 83-89, 91, 92, 95, 97-102, 105-109, 111)</sup>, enablement(n=50)<sup>(20, 39,</sup>  
276 <sup>44-47, 49, 51-54, 56, 59-71, 74-83, 85, 87-90, 93, 94, 97-99, 103-105, 108-111)</sup>, persuasion(n=38)<sup>(39, 49, 51, 52, 54, 56, 60-64, 67-72, 74, 76-78, 82,</sup>  
277 <sup>83, 86, 96-98, 100, 103, 108-111)</sup>, training(n=36)<sup>(20, 39-42, 45-47, 54, 56, 59, 61, 65, 66, 69, 70, 72, 74, 75, 77, 78, 82, 84, 87, 90-94, 99, 101-105,</sup>  
278 <sup>109, 110)</sup>, modelling(n=34)<sup>(40, 41, 45, 46, 54, 56, 59, 65-68, 70-72, 74, 76, 86, 95, 100-102, 109)</sup>, environmental restructuring  
279 (n=14)<sup>(42, 44, 47, 54, 56, 64, 67, 68, 72, 76, 90, 106, 109, 110)</sup>, incentivisation (n=11)<sup>(61, 63, 70, 92, 93, 97, 101, 106, 107, 112)</sup>. There  
280 were no interventions that included restriction or coercion. Table 4 indicates that in interventions  
281 where the Behaviour Change Wheel intervention functions persuasion, environmental restructuring  
282 and incentivisation were used, body composition and diet intake improved (BCW = Behaviour  
283 Change Wheel; Heat map to indicate the percentage of interventions where outcomes improved or  
284 did not improve. Key: Darker green and red indicate higher percentage of interventions per  
285 outcome). Education, enablement and training appeared to have less impact on these maternal and  
286 infant body composition and diet intake outcomes. However, psychosocial outcomes seemed to  
287 improve in interventions with training, incentivisation, modelling and education functions, and less  
288 so in interventions which included enablement such as nutrient supplementation. Interventions with  
289 multiple Behaviour Change Wheel intervention functions tended also to be those that improved  
290 maternal and child nutrition and health outcomes. The optimal number of intervention functions is  
291 not possible to determine because so few of the interventions had more than three. Our ability to  
292 draw conclusions about the effectiveness of intervention functions is limited by the fact that many  
293 of the studies do not measure all outcomes; measurements of nutritional intake are often omitted.  
294 Table 5 describes the way in which people's capability, opportunity and motivation are addressed in  
295 interventions to improve maternal and child nutrition and health outcomes. For example, food  
296 demonstrations and provision of agricultural land address physical capability and opportunity  
297 components respectively as specified by the COM-B model as necessary to change behaviour.

298

299 Table 4. The numbers of interventions using Behaviour Change Wheel intervention functions and the percentage of those where outcomes improved, did  
 300 not improve or were not measured.

Behaviour Change Wheel Intervention Function (BCW IF)	Number of interventions including each function	Anthropometric markers			Dietary outcomes			Psychosocial outcomes		
		Significant	Non-Significant	Not measured	Significant	Non-Significant	Not measured	Significant	Non-Significant	Not measured
Enablement	50	30.0%	8.0%	64.0%	50.0%	12.0%	40.0%	54.0%	6.0%	42.0%
Education	51	19.6%	11.8%	68.6%	52.9%	13.7%	33.3%	76.5%	3.9%	19.6%
Training	36	27.8%	11.1%	61.1%	41.7%	16.7%	41.7%	83.3%	5.6%	11.1%
Persuasion	38	34.2%	15.8%	52.6%	57.9%	10.5%	34.2%	52.6%	5.3%	44.7%
Modelling	34	23.5%	14.7%	64.7%	64.7%	11.8%	26.5%	70.6%	0.0%	32.4%
Environmental reconstructing	14	35.7%	21.4%	50.0%	71.4%	0.0%	35.7%	71.4%	0.0%	35.7%
Incentivisation	11	36.4%	9.1%	54.5%	72.7%	0.0%	27.3%	90.9%	0.0%	9.1%
1 BCW IF	5	20.0%	0.0%	80.0%	60.0%	20.0%	20.0%	40.0%	20.0%	40.0%
2 BCW IF	11	18.2%	18.2%	63.6%	54.5%	9.1%	36.4%	54.5%	0.0%	45.5%
3 BCW IF	32	25.0%	9.4%	65.6%	34.4%	18.8%	46.9%	65.6%	0.0%	34.4%
4 BCW IF	14	21.4%	7.1%	78.6%	71.4%	14.3%	21.4%	57.1%	14.3%	35.7%
5 BCW IF	6	50.0%	16.7%	33.3%	83.3%	0.0%	16.7%	100.0%	0.0%	0.0%
6 BCW IF	3	33.3%	33.3%	33.3%	100.0%	0.0%	0.0%	66.7%	0.0%	33.3%

301

302 Table 5. The categories of studies' intervention components analysed to the COM-B model

<b>COM-B model components</b>	<b>Nutrition-specific intervention components</b>	<b>Nutrition-sensitive intervention components</b>	<b>Behaviour change intervention components</b>
<b>Physical Capability (e.g. skills)</b>	Food demonstrations Breastfeeding skills sessions	Employment skills Agricultural technique development	Mastery to increase self-efficacy Modelling
<b>Psychological Capability (e.g. knowledge)</b>	Nutrition education Breastfeeding education	Water, Sanitation and Hygiene (WASH) knowledge	Observational learning
<b>Physical Opportunity (e.g. environment)</b>	Providing food rations Supplementation and fortification Cooking utensils	Provision of agriculture land and equipment WASH facilities Unconditional cash transfers	Environmental restructuring through cues, reminders, access
<b>Social Opportunity (e.g. social network)</b>	Nutrition support from elders, community health workers, peers	Community support groups Gamification Women's empowerment	Community groups problem-solving Modelling Support networks
<b>Automatic Motivation (e.g. habits)</b>	N/A	N/A	Behaviour change communication
<b>Reflective Motivation (e.g. decision-making)</b>	N/A	N/A	Counselling, Goal-setting

303

## 304 Discussion

305 This review of 71 studies addressed the question of whether nutrition-specific and nutrition-  
 306 sensitive interventions were more effective in improving maternal and child nutrition outcomes in  
 307 sub-Saharan Africa if they included behaviour change functions. It was found that those that were  
 308 based on behaviour change theory, counselling and communication, produced the most significant  
 309 positive impacts on infant and children wasting, underweight and stunting, and improved diet  
 310 outcomes including dietary diversity and total food consumption. There is very little evidence that  
 311 these interventions improved maternal and infant nutrient intake, which could be because changes  
 312 in nutrient intake were not often measured due to a lack of comprehensive data on the nutrient  
 313 composition of foods. These interventions reviewed also identified improvements in maternal

314 psychosocial outcomes in relation to nutrition, including knowledge, practice, attitude, intention,  
315 confidence, capability and wellbeing.

316 Interventions which included the Behaviour Change Wheel intervention functions, i.e.  
317 incentivisation, persuasion and environmental restructuring, tended to be those that improved  
318 maternal and child nutrition and psychosocial outcomes. The COM-B model suggests that omitting  
319 motivational components reduces the effectiveness of behaviour change interventions. This analysis  
320 in this table 5 demonstrates that nutrition-specific and nutrition-sensitive interventions cannot alone  
321 address motivational components and require additional behaviour change functions in order to  
322 improve maternal and child nutrition and health outcomes.

### 323 **Strengths and limitations**

324 A strength of this systematic review is the inclusion of a wide variety of studies using a range of  
325 intervention methods and outcomes to provide a broad overview of the way in which behavioural  
326 functions may increase effectiveness of nutrition interventions to improve maternal and child  
327 nutrition outcomes in sub-Saharan Africa. One limitation was that breastfeeding interventions were  
328 excluded. This was due to previous systematic reviews finding limited evidence of behaviour change  
329 components in the interventions<sup>(33, 34)</sup>. One weakness of the review is that mainly papers written and  
330 published in English were reviewed. Another is that not all authors of these papers explicitly  
331 identified behaviour change functions in their descriptions of interventions, meaning that we may  
332 have missed other relevant papers; all titles, abstracts and full texts were double-screened against  
333 the inclusion and exclusion criteria, however, in order to minimise this possibility. Consistency in the  
334 types of data extracted and in judgements of the quality of the studies was ensured by having two  
335 independent reviewers review the included studies.

336

337

## 338 **Implications**

339 Improving nutritional outcomes requires behaviour change at some level. To change nutrition  
340 behaviour, the COM-B model suggests that capability, opportunity and motivation should all be  
341 addressed<sup>(28)</sup>. Our analysis demonstrates that most nutrition-specific and nutrition-sensitive  
342 interventions only address participants' capability and opportunities and require the addition of  
343 behaviour change functions such as behaviour change communication and counselling to address  
344 missing motivational components. For example, one trial in Burkina Faso gave women land and  
345 seedlings (physical opportunity) and also provided volunteers to facilitate women's groups using  
346 behaviour change communication that was empowering and motivating; this package of  
347 interventions led to improvements in maternal and infant body composition, diet intake and  
348 psychosocial outcomes which have potential for long-lasting nutritional benefits for women and  
349 their families<sup>(54-56)</sup>. Research would suggest that these behaviour change communications and  
350 women's groups may have engaged with both automatic and reflective motivation<sup>(28)</sup>. Automatic  
351 motivation is defined as the unconscious process that "energizes and directs behaviour"<sup>(28)</sup>(p4),  
352 including habits and emotional responses. Reflective motivation describes conscious processes such  
353 as analytical decision-making. Education functions of the communications in the trial in Burkina Faso  
354 may have changed the conscious decisions women were making about how to feed themselves and  
355 their children (reflective motivation), and the groups may have created new social norms that  
356 encouraged women to change their dietary habits (automatic motivation).

357 This review linked three Behaviour Change Wheel intervention functions to improved outcomes.  
358 These were incentivisation, persuasion and environmental restructuring. All are hypothesised to  
359 change motivations<sup>(28)</sup>. Providing incentives, which include cash transfers and food vouchers, has  
360 been found to improve health outcomes, probably because it increases household disposable  
361 income allowing families to spend more money on food<sup>(61, 107)</sup>. This is particularly significant in  
362 improving outcomes in the poorest communities. Another incentive used was nutritional



363 supplements, which increased intervention attendance and uptake<sup>(63)</sup>. In contrast, failing to  
364 incentivise community health workers was given as a reason for their lack of motivation for  
365 delivering interventions<sup>(60)</sup>. Overall, there is compelling evidence that incentives can be a powerful  
366 motivating force in behaviour change interventions<sup>(113)</sup>.

367 Persuasive communications, which are designed to induce positive or negative feelings or stimulate  
368 action, were a common feature of many of the interventions in this review. These tended to focus  
369 on improving diet quality and diversity and were delivered through singing groups, storytelling and  
370 women's groups. The Behaviour Change Wheel indicates that persuasion, because it is often  
371 emotive, engages both reflective and automatic motivations<sup>(28)</sup>. This distinguishes it from purely  
372 educational communications which work by informing conscious decision-making (reflective  
373 motivation). In one intervention that included persuasive communication, grandmothers were  
374 encouraged through nutrition education to promote improved nutritional practices related to  
375 pregnancy and infant feeding within their families<sup>(103)</sup>. This was delivered through songs, storytelling  
376 and group discussions and made an emotional appeal to grandmothers' intrinsic commitment to  
377 family well-being. These persuasive communications were therefore explicitly designed to induce an  
378 emotional response (automatic motivation) as well as educate and inform (reflective motivation).

379 Environmental restructuring is the process of changing the physical and social environment, which is  
380 hypothesised to indirectly change motivation by cuing behaviour in a way which is often unconscious  
381 (automatic motivation). In the context of this review, environmental restructuring referred to  
382 provision of land, seedlings, livestock and equipment with the intention of increasing the  
383 effectiveness of community food production for both consumption and sale<sup>(54-56, 64, 106)</sup>. It can be  
384 speculated that this provision addresses automatic motivations by increasing availability and  
385 diversity of food in these communities and supporting creation of new eating habits intended to  
386 improve diet quality.

387 Figure 4 illustrates the way in which all these intervention functions can be drawn together.  
388 Encouragingly, the addition of behaviour change functions to nutrition interventions may provide  
389 good value for money; economic analysis of the relative cost of behaviour change functions within  
390 one nutrition intervention in Burundi indicated that they accounted for approximately 13% of the  
391 budget whereas provision of food rations took up 30%<sup>(52)</sup>. Longitudinal studies are required to assess  
392 the impact of nutritional outcomes across children's lifecourse and as communities undergo  
393 economic, nutritional, and societal transition<sup>(114)</sup>.

### 394 **Conclusion**

395 This review indicates that nutrition-specific interventions, such as increasing access to food<sup>(20, 75)</sup>, and  
396 nutrition-sensitive interventions, such as offering cash transfers<sup>(61)</sup> are not always enough to improve  
397 nutritional status of women and children in sub-Saharan Africa. Behaviour change communication  
398 and counselling are also unlikely on their own to be effective because they do not address food  
399 insecurity or nutritional deficiencies in high poverty contexts. Our findings indicate that  
400 interventions comprising all three Behaviour Change Wheel intervention functions (incentives,  
401 persuasion and environmental restructuring) were most likely to be effective in improving  
402 nutritional and psychosocial outcomes. By taking a health psychology perspective on this review,  
403 specifically drawing on concepts of automatic and reflective motivation from the Behaviour Change  
404 Wheel and COM-B model, motivation needs to be considered in designing an intervention to  
405 improve nutritional behaviour in the context of sub-Saharan Africa have been identified. To enhance  
406 the designs of these interventions, and ultimately improve the nutritional and psychosocial  
407 outcomes for mothers and infants in this region, multidisciplinary collaborations are required. Our  
408 recommendation would be to task behaviour change and nutrition experts such as health  
409 psychologists and nutritionists, as well as intervention designers, policy makers, and commissioners  
410 of services to fund and roll out these multicomponent behaviour change interventions.

411 Figure 4. Framework describing the way in which nutrition-specific and nutrition-sensitive  
412 interventions may be underpinned by behavioural concepts to improve maternal and child  
413 nutritional and psychosocial outcomes in sub-Saharan Africa. (Adaption of Lassi et al, 2017  
414 framework<sup>(115)</sup>)

415 **Acknowledgements:** We would also like to thank the INPreP group for their contributions to this  
416 work: Engelbert A. Nonterah, Abraham Oduro, Cornelius Debpuur, James Adoctor, Paul Welaga,  
417 Edith Dambayi, Esmond W. Nonterah, Winfred Oforu, Doreen Ayibisah, Maxwell Dalaba, Samuel  
418 Chatio (Navrongo Health Research Centre); Hermann Sorgho, Palwendé R. Boua, Adelaïde  
419 Compaoré, Kadja Ouedraogo, Karim Derra, Aminata Welgo, Halidou Tinto (Clinical Research Unit of  
420 Nanoro); Karen J. Hofman, Susan Goldstein, Agnes Erzse, Aviva Tugendhaft, Winfreda Mdewa,  
421 Ijeoma Edoke (SAMRC Centre for Health Economics and Decision Science, PRICELESS); Mark Hanson,  
422 Marie-Louise Newell, Keith M. Godfrey, Caroline Fall, Polly Hardy-Johnson (Faculty of Medicine,  
423 University of Southampton); Shane Norris, Emmanuel Cohen, Stephanie Wrottesley (SAMRC  
424 Developmental Pathways for Health Research Unit). We would also like to thank Paula Sands at the  
425 University of Southampton Health Sciences library for her support in developing the search strategy.

426 **Sources of support:** This research was funded by the National Institute for Health Research (NIHR)  
427 (17\63\154) using UK aid from the UK Government to support global health research. The views  
428 expressed in this publication are those of the authors and not necessarily those of the NIHR or the  
429 UK Department of Health and Social Care.

430 **Disclaimer:** None.

431 **Authorship:** DW, WTL, KW, SHK, MB designed the review, DW, PM, PB, TR, SJ screened and assessed  
432 the quality of the papers. All authors contributed to analysis of the data and to drafting and editing  
433 the article and approved the final manuscript.

## 434 References

435

- 436 1. Mwangome M, Prentice AM. Tackling the triple threats of childhood malnutrition. *BMC*  
437 *Medicine*, 2019; **17**:210. <https://doi.org/10.1186/s12916-019-1464-9>
- 438 2. World Health Organization. The double burden of malnutrition: policy brief. *World Health*  
439 *Organization*,. 2017.
- 440 3. Black RE, Victora CG, Walker SP, et al. Maternal and child undernutrition and overweight in  
441 low-income and middle-income countries. *The Lancet* 2013;**382**:427-51.
- 442 4. Bhutta ZA, Das JK, Rizvi A, et al. Evidence-based interventions for improvement of maternal  
443 and child nutrition: what can be done and at what cost? *The Lancet*. 2013;**382**:452-77.
- 444 5. Ruel MT, Alderman H, Maternal, Group CNS. Nutrition-sensitive interventions and  
445 programmes: how can they help to accelerate progress in improving maternal and child nutrition?  
446 *The Lancet*. 2013;**382**:536-51.
- 447 6. Gillespie S, Haddad L, Mannar V, et al. The politics of reducing malnutrition: building  
448 commitment and accelerating progress. *The Lancet*. 2013;**382**:552-69.
- 449 7. The Global Nutrition Report. Appendix 1: Nutrition indicators 2020 . May 5<sup>th</sup>, 2021  
450 [https://globalnutritionreport.org/reports/2020-global-nutrition-report/appendix-1-nutrition-](https://globalnutritionreport.org/reports/2020-global-nutrition-report/appendix-1-nutrition-indicators/)  
451 [indicators/](https://globalnutritionreport.org/reports/2020-global-nutrition-report/appendix-1-nutrition-indicators/).
- 452 8. Steyn NP, Mchiza ZJ. Obesity and the nutrition transition in Sub-Saharan Africa. *Ann N Y Acad*  
453 *Sci*. 2014;**1311**:88-101.
- 454 9. Desyibelew HD, Dadi AF. Burden and determinants of malnutrition among pregnant women  
455 in Africa: A systematic review and meta-analysis. *PloS one*. 2019;**14**: e0221712.  
456 [doi.org/10.1371/journal.pone.0221712](https://doi.org/10.1371/journal.pone.0221712)
- 457 10. Agyepong IA, Sewankambo N, Binagwaho A, et al. The path to longer and healthier lives for  
458 all Africans by 2030: the Lancet Commission on the future of health in sub-Saharan Africa. *The*  
459 *Lancet*. 2017;**390**:2803-59.
- 460 11. Popkin BM, Corvalan C, Grummer-Strawn LM. Dynamics of the double burden of  
461 malnutrition and the changing nutrition reality. *The Lancet*. 2020; **395**:64-74.
- 462 12. Wells JC, Sawaya AL, Wibaek R, et al. The double burden of malnutrition: aetiological  
463 pathways and consequences for health. *The Lancet*. 2020; **395**:75-88.
- 464 13. Hawkes C, Ruel MT, Salm L, et al. Double-duty actions: seizing programme and policy  
465 opportunities to address malnutrition in all its forms. *The Lancet*. 2020; **395**:142-155
- 466 14. Nugent R, Levin C, Hale J, et al. Economic effects of the double burden of malnutrition. *The*  
467 *Lancet*. 2019; **395**:156-164
- 468 15. Keats EC, Das JK, Salam RA, et al. Effective interventions to address maternal and child  
469 malnutrition: an update of the evidence. *The Lancet Child & Adolescent Health*. 2021; **5**:367-384.
- 470 16. Heidkamp RA, Piwoz E, et al. Mobilising evidence, data, and resources to achieve global  
471 maternal and child undernutrition targets and the Sustainable Development Goals: an agenda for  
472 action. *The Lancet*. 2021;**387**:1400-1418
- 473 17. Victora CG, Christian P, Vidaletti LP, et al. Revisiting maternal and child undernutrition in  
474 low-income and middle-income countries: variable progress towards an unfinished agenda. *The*  
475 *Lancet*. 2021;**397**:1388-1399
- 476 18. Ruel MT, Quisumbing AR, Balagamwala M. Nutrition-sensitive agriculture: What have we  
477 learned so far? *Global Food Security*. 2018;**17**:128-53.
- 478 19. Britto PR, Lye SJ, Proulx K, et al. Nurturing care: promoting early childhood development.  
479 *The Lancet*. 2017;**389**:91-102.
- 480 20. Galasso E, Weber AM, Stewart CP, et al. Effects of nutritional supplementation and home  
481 visiting on growth and development in young children in Madagascar: a cluster-randomised  
482 controlled trial. *The Lancet Global Health*. 2019;**7**:e1257-e68.

- 483
- 484 21. Shelton JD. The 6 domains of behavior change: the missing health system building block.  
485 *Global Health: Science and Practice*. 2013;**1**:137-140
- 486 22. Glanz K, Bishop DB. The role of behavioral science theory in development and  
487 implementation of public health interventions. *Annual review of public health*. 2010;**31**:399-418.
- 488 23. Gram L, Fitchett A, Ashraf A, et al. Promoting women's and children's health through  
489 community groups in low-income and middle-income countries: a mixed-methods systematic review  
490 of mechanisms, enablers and barriers. *BMJ Global Health*. 2019;**4**:e001972.  
491 systematic review of mechanisms, enablers and barriers. *BMJ Global Health*. 2019;**4**(6):e001972.
- 492 24. Altman L, Kuhlmann AKS, Galavotti C. Understanding the black box: a systematic review of  
493 the measurement of the community mobilization process in evaluations of interventions targeting  
494 sexual, reproductive, and maternal health. *Evaluation and program planning*. 2015;**49**:86-97.
- 495 25. Rifkin SB. Examining the links between community participation and health outcomes: a  
496 review of the literature. *Health policy and planning*. 2014;**29**:ii98-ii106.
- 497 26. Barker M, Dombrowski SU, Colbourn T, et al. Intervention strategies to improve nutrition  
498 and health behaviours before conception. *The Lancet*. 2018;**391**:1853-64.
- 499 27. Steptoe A, Pollard TM, Wardle J. Development of a measure of the motives underlying the  
500 selection of food: the food choice questionnaire. *Appetite*. 1995;**25**:267-84.
- 501 28. Michie S, Van Stralen MM, West R. The behaviour change wheel: a new method for  
502 characterising and designing behaviour change interventions. *Implementation science*. 2011;**6**:42.
- 503 29. University of York. Centre for Reviews Dissemination. Systematic reviews: CRD's guidance for  
504 undertaking reviews in health care: University of York, Centre for Reviews & Dissemination; 2009.
- 505 30. Page MJ, Moher D, Bossuyt PM, et al. PRISMA 2020 explanation and elaboration: updated  
506 guidance and exemplars for reporting systematic reviews. *BMJ*. 2021; **29**;372.
- 507 31. Moher D, Liberati A, Tetzlaff J, et al. Preferred reporting items for systematic reviews and  
508 meta-analyses: the PRISMA statement. *Annals of internal medicine*. 2009;**151**:264-9.
- 509 32. Davis R, Campbell R, Hildon Z, et al. Theories of behaviour and behaviour change across the  
510 social and behavioural sciences: a scoping review. *Health psychology review*. 2015;**9**:323-44.
- 511 33. Sudfeld CR, Fawzi WW, Lahariya C. Peer support and exclusive breastfeeding duration in low  
512 and middle-income countries: a systematic review and meta-analysis. *PloS one*. 2012;**7**: e45143
- 513 34. Webb Girard A, Waugh E, Sawyer S, et al. A scoping review of social-behaviour change  
514 techniques applied in complementary feeding interventions. *Mat & child nutr*. 2020;**16**:e12882.
- 515 35. Ouzzani M, Hammady H, Fedorowicz Z, et al. Rayyan—a web and mobile app for systematic  
516 reviews. *Systematic reviews*. 2016;**5**:210.
- 517 36. Rose T, Barker M, Jacob CM, et al. A systematic review of digital interventions for improving  
518 the diet and physical activity behaviors of adolescents. *J Adol Health*. 2017;**61**:669-77.
- 519 37. Lydon S, Power M, McSharry J, et al. Interventions to improve hand hygiene compliance in  
520 the ICU: a systematic review. *Critical care medicine*. 2017;**45**:e1165-e72.
- 521 38. Popay J, Roberts H, Sowden A, et al. Guidance on the conduct of narrative synthesis in  
522 systematic reviews. *A product from the ESRC methods programme*. 2006;**1**:b92.
- 523 39. Byrd K, Dentz HN, Williams A, et al. A behaviour change intervention with lipid-based  
524 nutrient supplements had little impact on young child feeding indicators in rural Kenya. *Mat and*  
525 *Child Nutr*. 2019;**15**: e12660.
- 526 40. Steyn NP, de Villiers A, Gwebushe N, et al. Did HealthKick, a randomised controlled trial  
527 primary school nutrition intervention improve dietary quality of children in low-income settings in  
528 South Africa? *BMC Public Health*. 2015;**15**:948.
- 529 41. de Villiers A, Draper CE, Hill J, et al. Primary School Children's Nutrition Knowledge, Self-  
530 Efficacy, and Behavior, after a Three-Year Healthy Lifestyle Intervention (HealthKick). *Ethnicity &*  
531 *Disease*. 2016;**26**:171-80.

- 532 42. Felegush D, Henry C, Hailu H, et al. A peer-led pulse-based nutrition education intervention  
533 improved school-aged children's knowledge, attitude, practice (KAP) and nutritional status in  
534 southern Ethiopia. *Journal of Food Research*. 2018;**7**:38-49.
- 535 43. Gelli A, Nguyen PH, Santacroce M, Twalibu A, Margolies A, Katundu M. A Community-Based  
536 Early Childhood Development Center Platform Promoting Diversified Diets and Food Production  
537 Increases the Mean Probability of Adequacy of Intake of Preschoolers in Malawi: A Cluster  
538 Randomized Trial. *J Nutr*. 2020;**150**:350-5.
- 539 44. Gelli A, Margolies A, Santacroce M, et al. Using a Community-Based Early Childhood  
540 Development Center as a Platform to Promote Production and Consumption Diversity Increases  
541 Children's Dietary Intake and Reduces Stunting in Malawi: A Cluster-Randomized Trial. *Journal of*  
542 *Nutrition*. 2018;**148**:1587-97.
- 543 45. Jemmott JB, III, Jemmott LS, O'Leary A, et al. Cognitive-behavioural health-promotion  
544 intervention increases fruit and vegetable consumption and physical activity among South African  
545 adolescents: A cluster-randomised controlled trial. *Psychology & Health*. 2011;**26**:167-85.
- 546 46. Jemmott JB, III, Zhang J, Jemmott LS, et al. Intervention increases physical activity and  
547 healthful diet among South African adolescents over 54 months: A randomized controlled trial.  
548 *Journal of Adolescent Health*. 2019;**65**:139-46.
- 549 47. Mlinda SJ, Leyna GH, Massawe A. The effect of a practical nutrition education programme on  
550 feeding skills of caregivers of children with cerebral palsy at Muhimbili National Hospital, in  
551 Tanzania. *Child: Care, Health and Development*. 2018;**44**:452-61.
- 552 48. Olney DK, Leroy JL, Bliznashka L, Ruel MT. A Multisectoral Food-Assisted Maternal and Child  
553 Health and Nutrition Program Targeted to Women and Children in the First 1000 Days Increases  
554 Attainment of Language and Motor Milestones among Young Burundian Children. *J Nutr*.  
555 2019;**149**:1833-42.
- 556 49. Leroy JL, Olney DK, Nduwabike N, Ruel MT. Tubaramure, a Food-Assisted Integrated Health  
557 and Nutrition Program, Reduces Child Wasting in Burundi: A Cluster-Randomized Controlled  
558 Intervention Trial. *J Nutr*. 2021;**151**:197-205.
- 559 50. Leroy JL, Olney D, Ruel M. Tubaramure, a food-assisted integrated health and nutrition  
560 program, reduces child stunting in Burundi: a cluster-randomized controlled intervention trial. *The J*  
561 *Nutr*. 2018;**148**:445-52.
- 562 51. Leroy JL, Olney D, Ruel M. Tubaramure, a Food-Assisted Integrated Health and Nutrition  
563 Program in Burundi, Increases Maternal and Child Hemoglobin Concentrations and Reduces Anemia:  
564 A Theory-Based Cluster-Randomized Controlled Intervention Trial. *J Nutr*. 2016;**146**(8):1601-8.
- 565 52. Heckert J, Leroy JL, Olney DK, Richter S, Iruhiriye E, Ruel MT. The cost of improving  
566 nutritional outcomes through food-assisted maternal and child health and nutrition programmes in  
567 Burundi and Guatemala. *Mat & child nutr*. 2020;**16**:e12863.
- 568 53. Morris J, Jones L, Berrino A, et al. Does combining infant stimulation with emergency feeding  
569 improve psychosocial outcomes for displaced mothers and babies? A controlled evaluation from  
570 Northern Uganda. *American Journal of Orthopsychiatry*. 2012;**82**:349-57.
- 571 54. Olney DK, Bliznashka L, Pedehombga A, Dillon A, Ruel MT, Heckert J. A 2-year integrated  
572 agriculture and nutrition program targeted to mothers of young children in Burkina Faso reduces  
573 underweight among mothers and increases their empowerment: a cluster-randomized controlled  
574 trial. *J Nutri*. 2016;**146**:1109-17.
- 575 55. Olney DK, Bliznashka L, Pedehombga A, Dillon A, Ruel MT, Heckert J. A 2-Year Integrated  
576 Agriculture and Nutrition Program Targeted to Mothers of Young Children in Burkina Faso Reduces  
577 Underweight among Mothers and Increases Their Empowerment: A Cluster-Randomized Controlled  
578 Trial. *J Nutri*. **146**:1109-17.
- 579 56. Nielsen JN, Olney DK, Ouedraogo M, et al. Process evaluation improves delivery of a  
580 nutrition-sensitive agriculture programme in Burkina Faso. *Mat and Child Nutr*. 2018;**14**: e12573.

- 581 57. Heckert J, Olney DK, Ruel MT. Is women's empowerment a pathway to improving child  
582 nutrition outcomes in a nutrition-sensitive agriculture program?: Evidence from a randomized  
583 controlled trial in Burkina Faso. *Social Science & Medicine*. 2019;**233**:93-102.
- 584 58. Diddana TZ, Kelkay GN, Dola AN, et al. Effect of nutrition education based on health belief  
585 model on nutritional knowledge and dietary practice of pregnant women in Dessie Town, Northeast  
586 Ethiopia: A cluster randomized control trial. *Journal of nutrition and metabolism*. 2018;  
587 <https://doi.org/10.1155/2018/6731815>.
- 588 59. Abiyu C, Belachew T. Effect of complementary feeding behavior change communication  
589 delivered through community-level actors on the time of initiation of complementary foods in rural  
590 communities of West Gojjam zone, Northwest Ethiopia: a cluster-randomized controlled trial. *BMC*  
591 *Pediatr*. 2020;**20**: e0238355.
- 592 60. Becquey E, Huybregts L, Zongrone A, et al. Impact on child acute malnutrition of integrating  
593 a preventive nutrition package into facility-based screening for acute malnutrition during well-baby  
594 consultation: A cluster-randomized controlled trial in Burkina Faso. *PLoS Medicine*. 2019;**16**:1-31.
- 595 61. Briaux J, Martin-Prevel Y, et al. Evaluation of an unconditional cash transfer program  
596 targeting children's first-1,000-days linear growth in rural Togo: A cluster-randomized controlled  
597 trial. *PLoS Medicine*. 2020;**17**:1-29.
- 598 62. Demilew YM, Alene GD, Belachew T. Effect of guided counseling on nutritional status of  
599 pregnant women in West Gojjam zone, Ethiopia: A cluster-randomized controlled trial. *Nutr Journal*.  
600 2020;**19**: 1-2.
- 601 63. Huybregts L, Le Port A, Becquey E, et al. Impact on child acute malnutrition of integrating  
602 small-quantity lipid-based nutrient supplements into community-level screening for acute  
603 malnutrition: A cluster-randomized controlled trial in Mali. *PLoS Medicine*. 2019;**16**:1-31.
- 604 64. Passarelli S, Ambikapathi R, Gunaratna NS, et al. A Chicken Production Intervention and  
605 Additional Nutrition Behavior Change Component Increased Child Growth in Ethiopia: A Cluster-  
606 Randomized Trial. *J Nutr*. 2020;**150**:2806-17.
- 607 65. Skar A-MS, De Abreu RM, Vaughn MJ. Strengthening a whole child approach within  
608 residential care settings through psychosocial support and nutritional guidance. *Child Care in*  
609 *Practice*. 2019;**25**:230-47.
- 610 66. Tomlinson M, Rabie S, Skeen S, et al. Improving mother–infant interaction during infant  
611 feeding: A randomised controlled trial in a low-income community in south africa. *Infant Mental*  
612 *Health Journal*. 2020; **41**: 850-858 .
- 613 67. Kim SS, Ali D, Kennedy A, et al. Assessing implementation fidelity of a community-based  
614 infant and young child feeding intervention in Ethiopia identifies delivery challenges that limit reach  
615 to communities: a mixed-method process evaluation study. *BMC public health*. 2015;**15**:316.
- 616 68. Kim SS, Nguyen PH, Yohannes Y, et al. Behavior Change Interventions Delivered through  
617 Interpersonal Communication, Agricultural Activities, Community Mobilization, and Mass Media  
618 Increase Complementary Feeding Practices and Reduce Child Stunting in Ethiopia. *Journal of*  
619 *Nutrition*. 2019;**149**:1470-81.
- 620 69. Flax VL, Ouma E, Izerimana L, Schreiner M-A, Brower AO, Niyonzima E, et al. Animal Source  
621 Food Social and Behavior Change Communication Intervention Among Girinka Livestock Transfer  
622 Beneficiaries in Rwanda: A Cluster Randomized Evaluation. *Global health, science and practice*.  
623 2021;**9**:640-53.
- 624 70. Han Y, Kim HB, Park S. The Roles of Nutrition Education and Food Vouchers in Improving  
625 Child Nutrition: Evidence from a Field Experiment in Ethiopia. *J Health Econ*. 2021;**80**:102545.
- 626 71. Katenga-Kaunda LZ, Kamudoni PR, Holmboe-Ottesen G, Fjeld HE, Mdala I, Shi Z, et al.  
627 Enhancing nutrition knowledge and dietary diversity among rural pregnant women in Malawi: a  
628 randomized controlled trial. *BMC Pregnancy & Childbirth*. 2021;**21**:644.
- 629 72. Santoso MV, Bezner Kerr RN, Kassim N, Martin H, Mtinda E, Njau P, et al. A Nutrition-  
630 Sensitive Agroecology Intervention in Rural Tanzania Increases Children's Dietary Diversity and

- 631 Household Food Security But Does Not Change Child Anthropometry: Results from a Cluster-  
632 Randomized Trial. *J Nutri.* 2021;**151**:2010-21.
- 633 73. Shapu RC, Ismail S, Lim PY, Ahmad N, Garba H, Njodi IA. Effectiveness of Triple Benefit Health  
634 Education Intervention on Knowledge, Attitude and Food Security towards Malnutrition among  
635 Adolescent Girls in Borno State, Nigeria. *Foods.* 2022;**11**:130.
- 636 74. McKune SL, Stark H, Sapp AC, Yang Y, Slanzi CM, Moore EV, et al. Behavior Change, Egg  
637 Consumption, and Child Nutrition: A Cluster Randomized Controlled Trial. *Pediatrics.* 2020;**146**.doi:  
638 <https://doi.org/10.1542/peds.2020-007930>
- 639 75. Galasso E, Umapathi N. Improving nutritional status through behavioural change: lessons  
640 from Madagascar. *J Dev Effectiveness.* 2009;**1**:60-85.
- 641 76. Kim SS, Rawat R, Mwangi EM, Tesfaye R, Abebe Y, Baker J, et al. Exposure to large-scale  
642 social and behavior change communication interventions is associated with improvements in infant  
643 and young child feeding practices in Ethiopia. *PloS one.* 2016;**11**:e0164800.
- 644 77. Ruel-Bergeron JC, Hurley KM, Buckland A, et al. Process evaluation of a large-scale  
645 community-based nutrition program in Malawi. *Curr dev in nutr.* 2020;**4**:nzz131.
- 646 78. Ruel-Bergeron JC, Hurley KM, Kang Y, et al. Monitoring and evaluation design of Malawi's  
647 Right Foods at the Right Time nutrition program. *Evaluation and program planning.* 2019;**73**:1-9.
- 648 79. Kang Y, Kim S, Sinamo S, et al. Effectiveness of a community-based nutrition programme to  
649 improve child growth in rural Ethiopia: A cluster randomized trial. *Mat & child nutr.* 2017;**13**: doi:  
650 [10.1111/mcn.12349](https://doi.org/10.1111/mcn.12349).
- 651 80. Kang Y, Suh YK, Debele L, et al. Effects of a community-based nutrition promotion  
652 programme on child feeding and hygiene practices among caregivers in rural Eastern Ethiopia. *Public*  
653 *health nutr.* 2017;**20**:1461-72.
- 654 81. Kang Y, Cha S, Yeo S, Christian P. Implementation, utilization and influence of a community-  
655 based participatory nutrition promotion programme in rural Ethiopia: programme impact pathway  
656 analysis. *Public Health Nutr.* 2017;**20**:2004-15.
- 657 82. Christian P, Hurley KM, Phuka J, et al. Impact Evaluation of a Comprehensive Nutrition  
658 Program for Reducing Stunting in Children Aged 6-23 Months in Rural Malawi. *J Nutri.*  
659 2020;**150**:3024-32.
- 660 83. Kumar N, Nguyen PH, Harris J, et al. What it takes: evidence from a nutrition- and gender-  
661 sensitive agriculture intervention in rural Zambia. *J Dev Effectiveness.* 2018;**10**:341-72.
- 662 84. Antwi J, Ohemeng A, Boateng L, et al. Primary school-based nutrition education intervention  
663 on nutrition knowledge, attitude and practices among school-age children in Ghana. *Global Health*  
664 *Promotion.* 2020; **27**:114-122.
- 665 85. Hurley KM, Phuka J, Kang Y, Ruel-Bergeron J, Buckland AJ, Mitra M, et al. A longitudinal  
666 impact evaluation of a comprehensive nutrition program for reducing stunting among children aged  
667 6–23 months in rural Malawi. *American Journal of Clinical Nutri.* 2021;**114**:248-56.
- 668 86. Saaka M, Wemah K, Kizito F, Hoeschle-Zeledon I. Effect of nutrition behaviour change  
669 communication delivered through radio on mothers' nutritional knowledge, child feeding practices  
670 and growth. *Journal of nutritional science.* 2021;**10**:e44.
- 671 87. Jacobs KL, Mash B, Draper CE, et al. Evaluation of a school-based nutrition and physical  
672 activity programme for grade 4 learners in the Western Cape province. *South African Family*  
673 *Practice.* 2013;**55**:391-7.
- 674 88. Mushaphi LF, Dannhauser A, Walsh CM, et al. The impact of a nutrition education  
675 programme on feeding practices of caregivers with children aged 3 to 5 years in rural Limpopo  
676 Province, South Africa. *South African Journal of Clinical Nutrition.* 2017;**30**:101–8.
- 677 89. Mushaphi LF, Dannhauser A, Walsh CM, et al. Effect of a nutrition education programme on  
678 nutritional status of children aged 3 - 5 years in Limpopo Province, South Africa. *South African*  
679 *Journal of Child Health.* 2015;**9**:98-102.



- 680 90. Ogunsile SE, Ogundele BO. Effect of game-enhanced nutrition education on knowledge,  
681 attitude and practice of healthy eating among adolescents in Ibadan, Nigeria. *Int J Health Promo and*  
682 *Edu.* 2016;**54**:207-16.
- 683 91. Saaka M, Galaa S. Improving the utilization of health and nutrition services: Experience from  
684 the Catholic Relief Services supported the Development Assistance Programme in Ghana. *Primary*  
685 *Health Care Research and Development.* 2011;**12**:145-56.
- 686 92. Tariku B, Whiting SJ, Mulualem D, et al. Application of the Health Belief Model to Teach  
687 Complementary Feeding Messages in Ethiopia. *Ecology of Food & Nutrition.* 2015;**54**:572-82.
- 688 93. Mulualem D, Henry CJ, Berhanu G, et al. The effectiveness of nutrition education: Applying  
689 the Health Belief Model in child-feeding practices to use pulses for complementary feeding in  
690 Southern Ethiopia. *Ecology of Food & Nutrition.* 2016;**55**:308-23.
- 691 94. Yetnayyet M, Henry CJ, Berhanu G, et al. Nutrition education promoted consumption of pulse  
692 based foods among rural women of reproductive age in Sidama Zone, Southern Ethiopia. *Afri J Food,*  
693 *Agri, Nutr and Dev.* 2017;**17**:12377-95.
- 694 95. Tamiru D, Argaw A, Gerbaba M, et al. Effect of integrated school-based nutrition education  
695 on optimal dietary practices and nutritional status of school adolescents in Southwest of Ethiopia: A  
696 quasi-experimental study. *Int J Adol Med and Health.* 2017;**29**:1-12.
- 697 96. Walton C, VanLeeuwen J, MacLellan D, et al. Effect of nutrition education and dairy group  
698 membership on nutrition knowledge, practices and diet quality for rural Kenyan farm women. *Afri J*  
699 *Food, Agri, Nutr and Dev.* 2017;**17**:12343-61.
- 700 97. Lion R, Arulogun O, Titiloye M, et al. The effect of the “Follow in my Green Food Steps”  
701 programme on cooking behaviours for improved iron intake: a quasi-experimental randomized  
702 community study. *Int J Behav Nutr and Phys Activ.* 2018;**15**:79.
- 703 98. Mutiso JM, Okello JJ, Lagerkvist CJ, et al. Effect of nutrition education and psychosocial  
704 factors on child feeding practices: findings of a field experiment with biofortified foods and different  
705 women categories. *Eco of food and nutr.* 2018;**57**:346-71.
- 706 99. Lagerkvist CJ, Okello JJ, Adekambi S, et al. Goal-setting and volitional behavioural change:  
707 Results from a school meals intervention with vitamin-A biofortified sweetpotato in Nigeria.  
708 *Appetite.* 2018;**129**:113-24.
- 709 100. Workicho A, Biadgilign S, Kershaw M, Gizaw R, Stickland J, Assefa W, et al. Social and  
710 behaviour change communication to improve child feeding practices in Ethiopia. *Mat & Child Nutri.*  
711 2021;**17**:1-10.
- 712 101. Thuita FM, Martin SL, Ndegwa K, et al. Engaging fathers and grandmothers to improve  
713 maternal and child dietary practices: planning a community-based study in western Kenya. *Afri J*  
714 *Food, Agri, Nutr and Dev.* 2015;**15**:10386-405.
- 715 102. Mukuria AG, Martin SL, Egondi T, et al. Role of Social Support in Improving Infant Feeding  
716 Practices in Western Kenya: A Quasi-Experimental Study. *Global Health-Science and Practice.*  
717 2016;**4**:55-72.
- 718 103. Aubel J, Toure´ I, Diagne M. Senegalese grandmothers promote improved maternal and child  
719 nutrition practices: the guardians of tradition are not averse to change. *Social Sci & Med.*  
720 2004;**59**:945-59.
- 721 104. DeLorme AL, Gavenus ER, Salmen CR, et al. Nourishing networks: A social-ecological analysis  
722 of a network intervention for improving household nutrition in Western Kenya. *Social Sci & Med.*  
723 2018;**197**:95-103.
- 724 105. Ezezika O, Oh J, Edeagu N, Boyo W. Gamification of nutrition: A preliminary study on the  
725 impact of gamification on nutrition knowledge, attitude, and behaviour of adolescents in Nigeria.  
726 *Nutr & Health.* 2018;**24**:137-44.
- 727 106. Muehlhoff E, Wijesinha-Bettoni R, et al. Linking agriculture and nutrition education to  
728 improve infant and young child feeding: Lessons for future programmes. *Mat and Child Nutr.*  
729 2017;**13**: e12411.

- 730 107. Dozio E, Peyre L, Oliveau Morel S, et al. Integrated psychosocial and food security approach  
731 in an emergency context: Central African Republic. *Intervention*. 2016;**14**:257-71.
- 732 108. Fernandes M, Galloway R, Gelli A, et al. Enhancing linkages between healthy diets, local  
733 agriculture, and sustainable food systems: the school meals planner package in Ghana. *Food and*  
734 *nutrition bulletin*. 2016;**37**:571-84.
- 735 109. Olney DK, Pedehombga A, Ruel MT, Dillon A. A 2-year integrated agriculture and nutrition  
736 and health behavior change communication program targeted to women in Burkina Faso reduces  
737 anemia, wasting, and diarrhea in children 3-12.9 months of age at baseline: a cluster-randomized  
738 controlled trial. *J Nutr*. 2015;**145**:1317-24.
- 739 110. Rosenberg AM, Maluccio JA, Harris J, et al. Nutrition-sensitive agricultural interventions,  
740 agricultural diversity, food access and child dietary diversity: Evidence from rural Zambia. *Food*  
741 *Policy*. 2018;**80**:10-23.
- 742 111. Leroy JL, K Olney D, Bliznashka L, et al. Tubaramure, a Food-Assisted Maternal and Child  
743 Health and Nutrition Program in Burundi, Increased Household Food Security and Energy and  
744 Micronutrient Consumption, and Maternal and Child Dietary Diversity: A Cluster-Randomized  
745 Controlled Trial. *J Nutr*. 2019; **150**:945-957
- 746 112. Santoso MV, Bezner Kerr RN, Kassim N, Martin H, Mtei K, Mtinda E, et al. A Nutrition-  
747 Sensitive Agroecology Intervention in Rural Tanzania Increases Children's Dietary Diversity and  
748 Household Food Security but Does Not Change Child Anthropometry: Results from a Cluster-  
749 Randomized Trial. *J Nutri*. 2021;**151**:2010-21.
- 750 113. Giles EL, Robalino S, McColl E, Sniehotta FF, Adams J. The effectiveness of financial  
751 incentives for health behaviour change: systematic review and meta-analysis. *PLoS One*.  
752 2014;**9**:e90347.
- 753 114. Watson D, Kehoe SH, Erzse A, Compaore A, Debpuur C, Nonterah EA, et al. Community  
754 perspectives on maternal and child health during nutrition and economic transition in sub-Saharan  
755 Africa. *Public Health Nutr*. 2021;**24**:3710-8.
- 756 115. Lassi ZS, Moin A, Das JK, Salam RA, Bhutta ZA. Systematic review on evidence-based  
757 adolescent nutrition interventions. *Ann N Y Acad Sci*. 2017;**1393**:34-50.

759 **Appendix A Behaviour change systematic review search**  
 760 **strategy**

761 **Search strategy**

762 **Databases**

763 Cochrane database, EMBASE, Medline, web of science, CINAHL, PSYCHinfo, scopus

764 **Inclusion criteria**

Study Design	All study designs evaluating maternal and child nutrition interventions.
Population	At least one of the following populations living in sub-Saharan Africa: <ul style="list-style-type: none"> <li>- women of child bearing age (preconception)</li> <li>- pregnant women</li> <li>- fathers</li> <li>- infants, children and adolescents</li> </ul>
Interventions	Nutrition related interventions
Comparator	Non behavioural change intervention
Outcomes	At least one of the following outcomes for: <ul style="list-style-type: none"> <li>- Health outcomes, including physical and psychological</li> <li>- Behavioural outcomes to nutrition</li> <li>- Both short and long term outcomes</li> </ul>

765

766 **Search terms**

Population	(Sub Sahara* Africa OR subsahara* OR Africa South of the Sahara )  OR  (Angola OR Benin OR Botswana OR Burkina Faso OR Burundi OR Cameroon OR Cape Verde OR Central Africa OR Central African Republic OR Chad OR Comoros OR Congo OR Cote d*Ivoire OR Democratic Republic Congo OR Djibouti OR Equatorial Guinea OR Eritrea OR
------------	---

	<p>Ethiopia OR Gabon OR Gambia OR Ghana OR Guinea OR Guinea Bissau OR Kenya OR Lesotho OR Liberia OR Madagascar OR Malawi OR Mali OR Mayotte OR Mozambique OR Namibia OR Niger OR Nigeria OR Rwanda OR Sahel OR Senegal OR Sierra Leone OR Somalia OR South Africa OR South Sudan OR Sudan OR Swaziland OR Tanzania OR Togo OR Uganda OR Zambia OR Zimbabwe )</p> <p>AND</p> <p>(<b>Matern*</b> OR <b>Mother*</b>OR <b>pregnan*</b> OR pre natal OR prenatal OR post natal OR <b>postnatal</b> OR <b>preconception</b> OR pre conception OR reproduc* OR paternal OR <b>parental</b> OR <b>family planning</b> OR 1000 days )</p> <p>OR</p> <p>(<b>adolescen*</b> OR youth OR young OR teen* OR student* OR girl* OR boy* OR pupil* OR <b>pubert*</b> )</p> <p>OR</p> <p>(offspring OR <b>infant*</b> OR <b>child</b> OR children OR <b>childhood</b> OR baby OR babies OR <b>newborn</b> OR <b>new born</b> OR paediatric* )</p>
Intervention	<p>AND</p> <p>((<b>Nutrition*</b> OR Diet* OR food OR eat* OR nutrient OR feed*))</p> <p>Adj3</p> <p>(Attribution Theory OR Health locus of control OR Self determination theor* OR Risk perception OR self affirmation theory OR Self efficacy OR Stage of change model OR health action process approach OR Health belief model OR Theory of planned behav* OR social cognitive theor*</p>

<p>OR Transtheoretical Model of Change OR Theory of Planned Behav* OR information Motivation Behav* skill* OR IBM OR Social Learning Theor* OR diffusion of innovation OR community mobilisation OR ecological perspective OR COMB OR COM B OR Capability, Opportunity, Motivation Behav* OR behav* change wheel))</p> <p>OR</p> <p>((<b>Nutrition*</b> OR Diet* OR food OR eat* OR nutrient OR feed*)) Adj3</p> <p>(social norm* OR attitude OR perception OR belief OR susceptibility OR autonomy OR health promotion OR public health campaign OR empower* OR resilien*OR goal setting OR implementation intention* OR co*production intervention))</p> <p>OR</p> <p>((<b>Nutrition*</b> OR Diet* OR food OR eat* OR nutrient OR feed*)) Adj3</p> <p>(behav* change technique* OR <b>behav* change theor*</b> OR behav* change OR behav* change intervention OR behav* modification OR community behav* change OR prevent behav* OR behav* change communication OR cultur* change* OR theoretical domain framework ))</p> <p>OR</p> <p>((<b>Nutrition*</b> OR Diet* OR food OR eat* OR nutrient OR feed*)) Adj3</p> <p>(<b>Health Psycholog*</b> theor* OR Health Psychology OR critical Psycholog* theor* OR clinical psycholog* theor* OR social Psycholog* theor* OR <b>cross cultural psycholog*</b> OR anthropology OR psychosocial OR biopsychosocial OR international psychology OR social science OR social medicine OR behav* medicine))</p>
--

Outcome	<p>AND</p> <p>((<b>Nutrition*</b> OR Diet* OR food OR eat* OR nutrient OR feed*)) adj3</p> <p>(<b>Health OR health*care OR wellbeing OR mental health OR psychological function* OR cognition</b> ) )</p> <p>OR</p> <p>((<b>Nutrition*</b> OR Diet* OR food OR eat* OR nutrient OR feed*)) adj3</p> <p>(<b>human capital OR economic* OR social OR employment OR education</b> ) )</p> <p>OR</p> <p>((<b>Nutrition*</b> OR Diet* OR food OR eat* OR nutrient OR feed*)) adj3</p> <p>(choice OR behav* OR habit* OR pattern OR prefer* OR selection OR portion OR size OR tast* OR binge OR comfort OR crav* OR perception OR perceive* OR belief OR attitude OR control OR norm*OR value* OR fruit* OR vegetable*))</p>
---------	---

768 **Appendix B Behaviour Change systematic review**  
 769 **screening document**

Study Characteristics	Inclusion criteria:	Exclusion criteria:
Type of study	<input type="checkbox"/> Intervention implementation (RCTs, cohort, longitudinal etc), <input type="checkbox"/> intervention evaluation <input type="checkbox"/> systematic reviews of interventions	<input type="checkbox"/> Protocols, commentary articles, conference papers, abstracts <input type="checkbox"/> Qualitative methodology to explore perceptions around nutrition <input type="checkbox"/> Surveys to investigate nutrition status
Participants	Populations living in sub-Saharan Africa: <input type="checkbox"/> women of child bearing age (preconception) <input type="checkbox"/> pregnant women <input type="checkbox"/> fathers <input type="checkbox"/> adolescents <input type="checkbox"/> new-borns <input type="checkbox"/> infants <input type="checkbox"/> children	<input type="checkbox"/> Populations living outside sub-Saharan Africa <input type="checkbox"/> Adults above child bearing age <input type="checkbox"/> Expats living in Africa
Types of intervention	<input type="checkbox"/> Nutrition interventions with behavioural science component such as education, communication, social support etc <input type="checkbox"/> Nutrition interventions with psychological components such as personality, cognition, social psychology <input type="checkbox"/> Individual, family or community based	<input type="checkbox"/> Non-nutrition interventions <input type="checkbox"/> Interventions solely focused on HIV/AIDS <input type="checkbox"/> malaria or other infectious diseases <input type="checkbox"/> Breastfeeding <input type="checkbox"/> Interview/Focus group studies <input type="checkbox"/> Survey studies
Types of outcome measures	At least one of the following outcomes for infants, children and adolescents: <input type="checkbox"/> Nutrition outcomes <input type="checkbox"/> Behavioural outcomes <input type="checkbox"/> Short and long term health outcomes	
INCLUDE <input type="checkbox"/>		EXCLUDE <input type="checkbox"/>
Reason for exclusion		
Notes:		

## 771 Appendix C Behaviour Change Wheel (Michie et al, 2011)

Interventions	Definition	Examples
Education	Increasing knowledge or understanding	Providing information to promote healthy eating
Persuasion	Using communication to induce positive or negative feelings or stimulate action	Using imagery to motivate increases in physical activity
Incentivisation	Creating expectation of reward	Using prize draws to induce attempts to stop smoking
Coercion	Creating expectation of punishment or cost	Raising the financial cost to reduce excessive alcohol consumption
Training	Imparting skills	Advanced driver training to increase safe driving
Restriction	Using rules to reduce the opportunity to engage in the target behaviour (or to increase the target behaviour by reducing the opportunity to engage in competing behaviours)	Prohibiting sales of solvents to people under 18 to reduce use for intoxication
Environmental restructuring	Changing the physical or social context	Providing on-screen prompts for GPs to ask about smoking behaviour
Modelling	Providing an example for people to aspire to or imitate	Using TV drama scenes involving safe-sex practices to increase condom use
Enablement	Increasing means/reducing barriers to increase capability or opportunity	Behavioural support for smoking cessation in sub-Saharan Africa, medication for cognitive deficits, surgery to reduce obesity, prostheses to promote physical activity



773 **Appendix D Behaviour change systematic review quality**  
 774 **assessment scoring rubric**

775

	Item	Risk of bias		
		Low (+1)	Medium (0)	High (1)
1	Study design	Randomised controlled trial, Quasi-experimental studies that include a control group	Evaluation of Randomised controlled trial such as process review	Experimental studies that do not use a control group.
2	Randomisation	Participants or communities are randomised in large clusters.		Not randomised, or inadequate randomisation methods such as birth date used. OR randomisation methods not described
3	Blinding	Participants and analysts were blinded to treatment condition.	Participants or communities were not sufficiently blinded, but analysis of results was blinded.	No blinding, or insufficient blinding methods.
4	Were groups similar at baseline?	Appropriate statistical tests (chi-square and/or t-tests) used to analyse differences between groups at baseline, and found that there were no significant differences.	Groups are similar, but there are some differences that are judged to be acceptable.	Analyst did not test for differences at baseline, or there were significant differences between groups.
5	Selection	Participants were randomly selected.	Community based interventions that require health professionals.	Volunteers are recruited.
6	Loss to follow-up	Loss to follow up of less than 10% AND similar loss in all groups.	More dropouts than expected (10%-30%). Similar loss between groups.	High dropout rate (>30%) and/or significant difference in follow up between groups.
7	Dietary assessment	Very reliable methodology that does not rely on self-report	Measures are reliable, but self-reported	Unreliable methods including questionnaires that have not been piloted or validated, and methods that increase the likelihood of socially acceptable responses
8	Behaviour change intervention component	Interventions clearly outlined a behaviour change or psychological theory within the intervention design	Components from the Behaviour Change Wheel can be associated to the intervention.	There was no or limited mention of behaviour change intervention functions
9	Performance bias	The intervention was delivered in a way that was not variable eg. Computer-generated.	The intervention was probably delivered consistently. Eg. The same person delivering a lesson to multiple groups.	The intervention was likely to have been delivered differently across the trial. Eg. Different health workers promoting nutrition education

10	Intention to treat	Intention to treat analysis was clearly used		Intention to treat was not used, or not stated
11	Analytic methods	Statistical tests used are rigorous and appropriate for the data set. (Regression modelling, ANOVA, etc) OR rigorous qualitative analysis (thematic analysis)	Statistical methods are effective, but not as rigorous as they could be.	Statistical methods are limited, and only report descriptive stats OR tests used are not appropriate for the dataset.
12	Did the analysis adjust for confounding? <ul style="list-style-type: none"> <li>• Educational attainment or SES</li> <li>• BMI/weight</li> <li>• Gender</li> <li>• Age</li> <li>• Baseline behaviour</li> </ul>	The statistical model used adjusts for all relevant confounding factors.	The model adjusts for 3 or 4 confounders.	The analysis adjusts for fewer than 3 confounders

776

777 **Appendix E Behaviour change systematic review quality**  
 778 **assessment form**

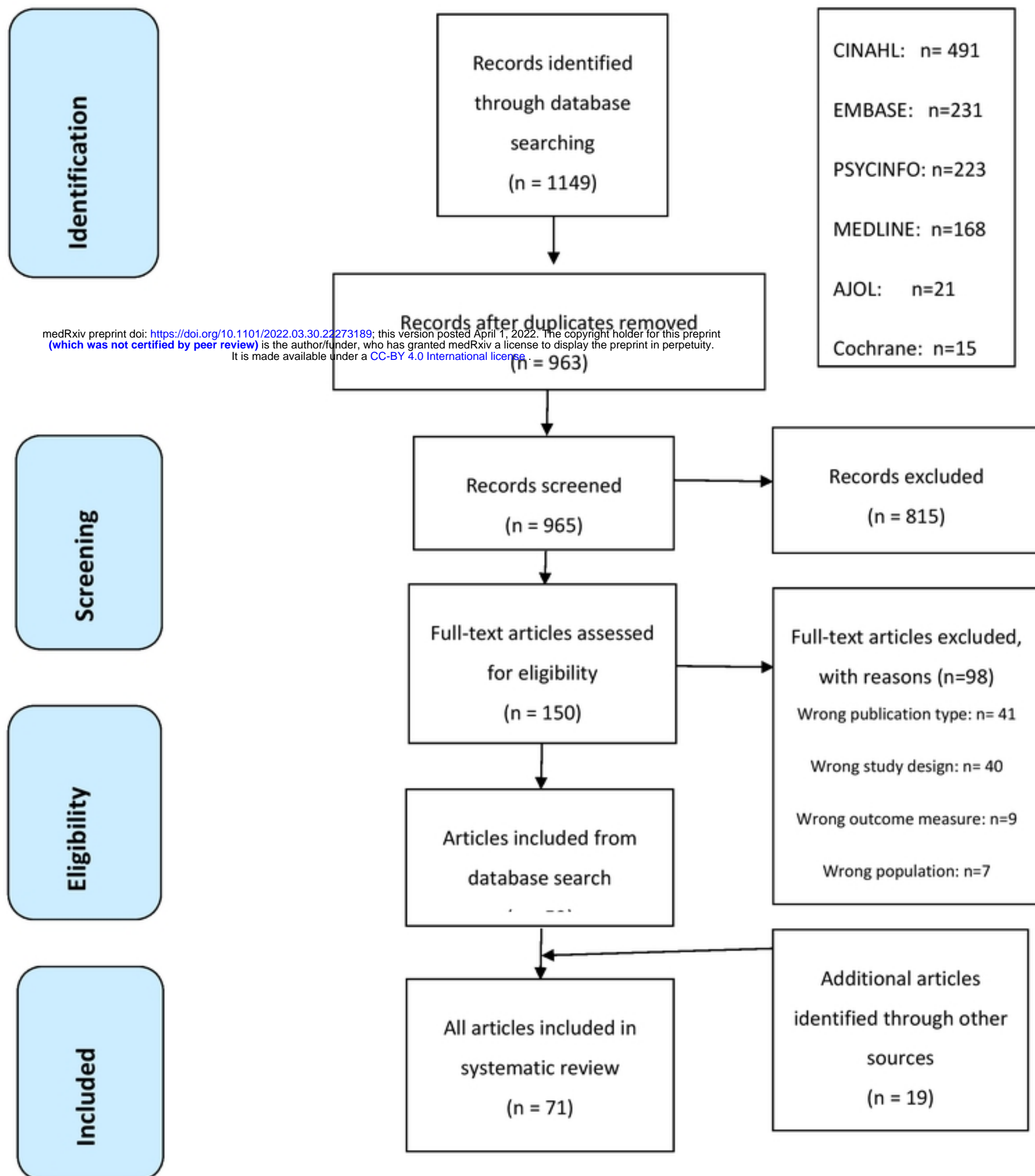
779

Quality Assessment (Author, year, country, journal)			
	Criteria	Description	Risk of bias score
1	Study design		
2	Randomisation		
3	Blinding		
4	Were groups similar at baseline?		
5	Selection (Were the selection criteria for the study specified?)		
6	Loss to follow-up		
7	Dietary assessment		
8	Behaviour change intervention component		
9	Performance bias - Was the intervention executed in the same way across all participants/clusters?		
10	Intention to treat		
11	Analytical methods		
12	Did the analysis adjust for confounding?		
	Reviewer's comments		



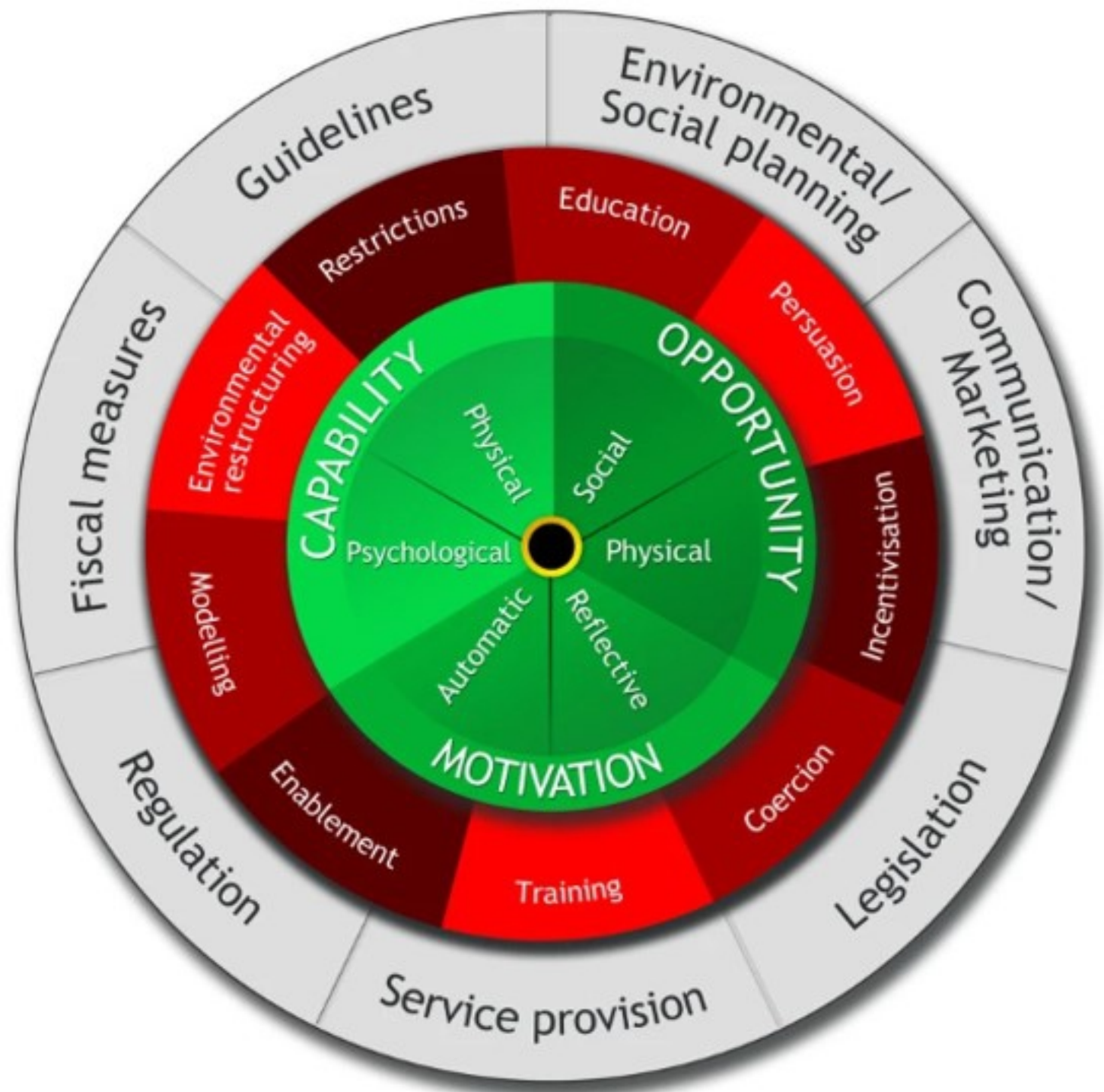


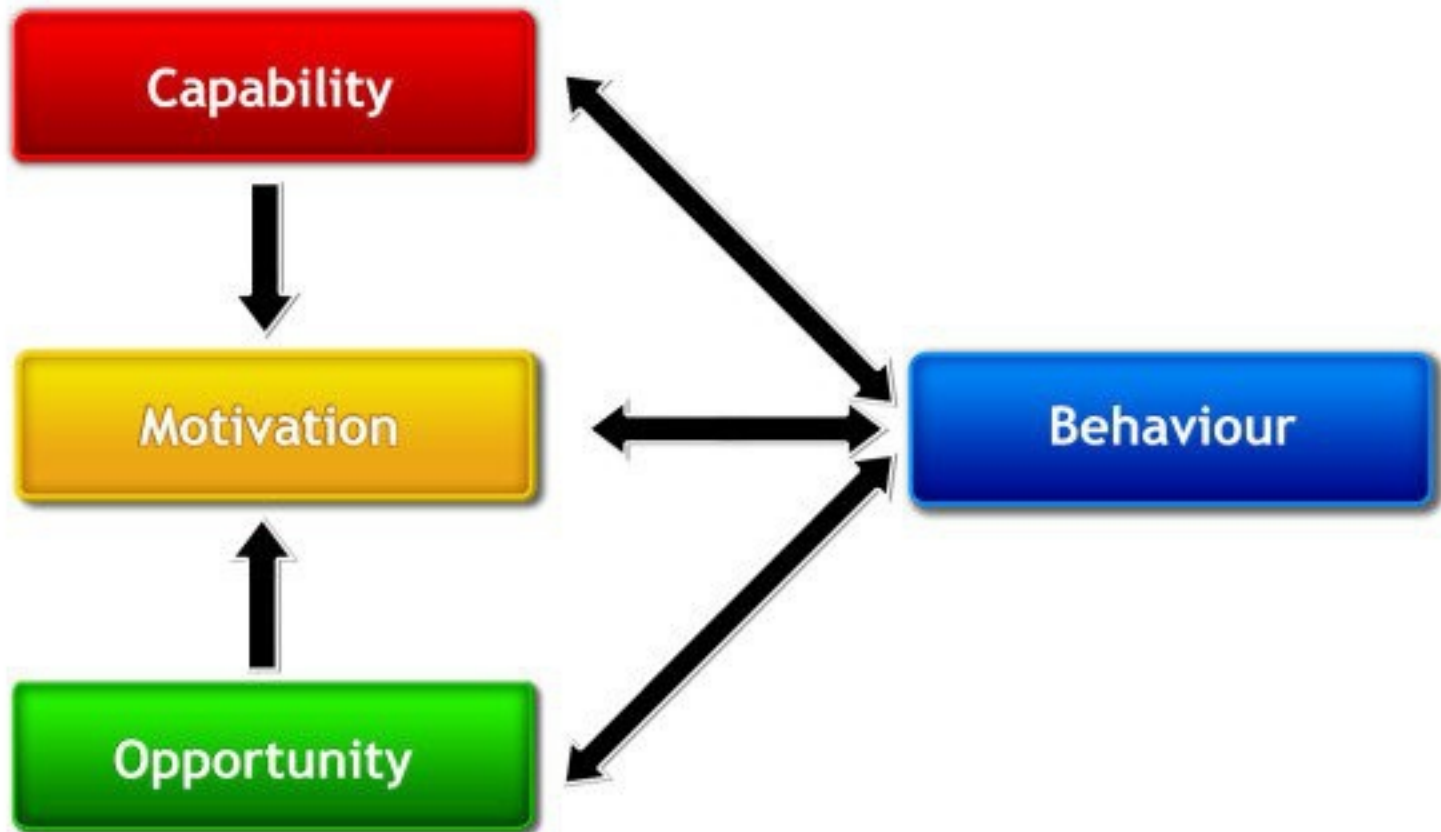
Figure 1. Flowchart of study selection PRISMA diagram



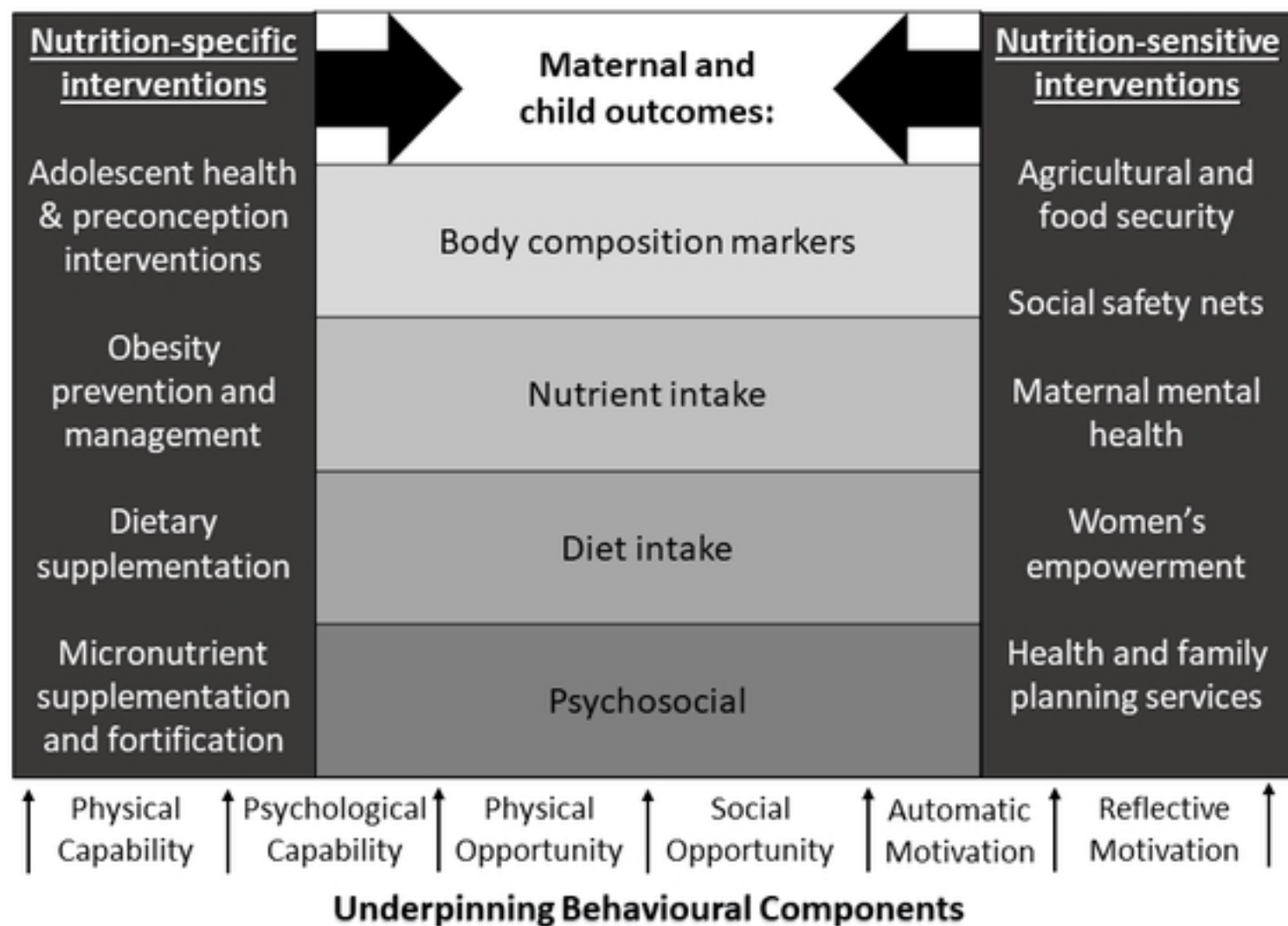
medRxiv preprint doi: <https://doi.org/10.1101/2022.03.30.22273189>; this version posted April 1, 2022. The copyright holder for this preprint (which was not certified by peer review) is the author/funder, who has granted medRxiv a license to display the preprint in perpetuity. It is made available under a [CC-BY 4.0 International license](https://creativecommons.org/licenses/by/4.0/).

- Sources of behaviour
- Intervention functions
- Policy categories









Figure