

1 **Risk of SARS-CoV-2 transmission by fomites: a clinical observational study in highly infectious**
2 **COVID-19 patients**

3 *Short title: Risk of SARS-CoV-2 transmission by fomites*

4
5 Toni Luise Meister, M.Sc. ^{1*}, Marielen Dreisemeier, M.D. ^{2*}, Elena Vidal Blanco ¹, Yannick
6 Brüggemann, Dr. ¹, Natalie Heinen, M.Sc. ¹, Günter Kampf, Prof. ³, Daniel Todt, Dr. ^{1,4}, Huu Phuc
7 Nguyen, Prof ⁵, Jörg Steinmann, Prof. ⁶, Wolfgang Ekkehard Schmidt, Prof. ², Eike Steinmann, Prof. ¹,
8 Daniel Robert Quast, Dr. ^{2#} and Stephanie Pfaender, Prof. ^{1#}

9
10 ¹ Department for Molecular & Medical Virology, Ruhr-University Bochum, 44801 Bochum, Germany

11 ² Department of Medicine I, St. Josef-Hospital Bochum, Ruhr-University Bochum, 44791 Bochum,
12 Germany

13 ³ Institute for Hygiene and Environmental Medicine, University Medicine Greifswald, 17475
14 Greifswald, Germany

15 ⁴ European Virus Bioinformatics Center (EVBC), 07743 Jena, Germany

16 ⁵ Department of Human Genetics, Ruhr-University Bochum, 44791 Bochum, Germany

17 ⁶ Institute of Clinical Hygiene, Medical Microbiology and Infectiology, Paracelsus Medical University,
18 Nuremberg, Germany

19
20 * These authors contributed equally and share first authorship.

21 # These authors contributed equally and share last authorship.

22
23 Funding: None.

24 Word count: Abstract: 227; Text: 3049

25 Corresponding author:

26 Jr.-Prof. Dr. Stephanie Pfänder

27 Department for Molecular & Medical Virology, Ruhr-University Bochum, 44801 Bochum, Germany

28 Phone: +49 234 32 – 29278

29 E-Mail: stephanie.pfaender@ruhr-uni-bochum.de

30 **Abstract**

31 Background:

32 The contribution of droplet-contaminated surfaces for virus transmission has been discussed
33 controversially in the context of the current Severe Acute Respiratory Syndrome Coronavirus-2 (SARS-
34 CoV-2) pandemic. Importantly, the risk of fomite-based transmission has not been systematically
35 addressed.

36 Methods:

37 We initiated this single-center observational study to evaluate whether hospitalized COVID-19 patients
38 can contaminate stainless steel carriers by coughing or intensive moistening with saliva and to assess
39 the risk of SARS-CoV-2 transmission upon detection of viral loads and infectious virus in cell culture.
40 Fifteen hospitalized patients with a high baseline viral load (CT value ≤ 25) shortly after admission were
41 included. We documented clinical and laboratory parameters and used patient samples to perform virus
42 culture, quantitative PCR and virus sequencing.

43 Results:

44 Nasopharyngeal and oropharyngeal swabs of all patients were positive for viral RNA on the day of the
45 study. Infectious SARS-CoV-2 could be isolated from 6 patient swabs (46.2 %). While after coughing,
46 no infectious virus could be recovered, intensive moistening with saliva resulted in successful viral
47 recovery from steel carriers of 5 patients (38.5 %).

48 Conclusions:

49 Transmission of infectious SARS-CoV-2 via fomites is possible upon extensive moistening, but unlikely
50 to occur in real-life scenarios and from droplet-contaminated fomites.

51

52

53

54 Registration: None.

55 Keywords: Coronavirus, SARS-CoV-2, COVID-19, fomites, surfaces, cough,
56 transmission, environmental stability

57 **Background**

58 The emergence of Severe Acute Respiratory Syndrome Coronavirus-2 (SARS-CoV-2), the cause of the
59 Coronavirus Disease-19 (COVID-19), has raised the general awareness towards different hygiene and
60 prevention measures to limit viral spread. Although SARS-CoV-2 is mainly transmitted via respiratory
61 droplets and aerosols exhaled from infected individuals (e.g., upon breathing, speaking, coughing or
62 sneezing [1]), droplet-contaminated surfaces (fomites) have also been widely perceived as another
63 potential route of transmission. In particular, different studies reported that SARS-CoV-2 can persist on
64 inanimate surfaces for days under controlled laboratory conditions [2–4] and genomic material of
65 SARS-CoV-2 has been detected on diverse surfaces and materials in hospital, private and public settings
66 [5]. Consequently, a clinically significant risk of SARS-CoV-2 transmission by fomites has been
67 assumed and extensive hand hygiene and disinfection procedures have been initiated early during the
68 pandemic worldwide. Although recent studies suggest a low risk of viral transmission by fomites for
69 most instances [1,6], it is still considered possible given a timely order of events (e.g., direct
70 contamination of a surface by an infected individual followed by timely skin contact by another
71 individual and direct contact towards susceptible mucosae) [7]. However, most efforts to study surface
72 transmission of SARS-CoV-2 have either focused on the detection of viral RNA via RT-qPCR rather
73 than direct detection of infectious viral particles and/or employed lab-grown viruses which do not
74 recapitulate the specific infectivity of patient-derived SARS-CoV-2 particles. Consequently, these
75 findings do not necessarily allow to adequately estimate the potential of SARS-CoV-2 transmission
76 from directly contaminated surfaces.

77 To examine the risk of transmission by surfaces directly after contamination by individuals infected
78 with SARS-CoV-2, we performed a clinical observational study, including hospitalized patients with
79 high viral loads ($CT \leq 25$, up to 2.03×10^9 RNA copies). The aim of this study was to evaluate if
80 confirmed hospitalized COVID-19 patients can contaminate stainless steel carriers by coughing or
81 intensive moistening with saliva and to assess the risk of SARS-CoV-2 transmission upon detection of
82 viral loads and infectious virus in cell culture.

83 **Methods**

84 *Study cohort.*

85 Hospitalized patients (age > 18 years) treated at St. Josef-Hospital Bochum, Germany, with confirmed
86 SARS-CoV-2 infection with a high virus load (RT-PCR from combined nasopharyngeal and
87 oropharyngeal swab (swab) with a cycle threshold (CT) ≤ 25 on admission) were included in this study.
88 The initial viral load was determined using Allplex™ 2019-nCoV Assay (Seegene Inc., Seoul, Republic
89 of Korea) targeting three SARS-CoV-2 specific genes (E gene, RdRP gene and N gene) with a sensitivity
90 of 100 copies per run. Exclusion criteria were acute myocardial infarction, current need of ventilation
91 support systems (e.g., high flow- or non-invasive ventilation), current treatment in an intensive care unit,
92 evidence of drug or alcohol abuse, acute psychiatric disorders and any clinical or mental disorder that
93 might deteriorate the patient's condition during the standardized procedure of sampling (such as
94 dysphagia), as per investigator's judgement. Collected clinical data included medical history, current
95 daily medication, laboratory results, blood gas analysis, and results of x-rays or computed tomography
96 (to define the "clinical classification of COVID-19-infection" following the recommendation of the
97 World Health Organization (WHO) [8] and Robert Koch Institute (RKI) [9]).

98

99 *Study design.*

100 After written informed consent, two combined nasopharyngeal and oropharyngeal swabs were collected
101 from each patient. Then, patients were asked to forcefully cough two-times on a pre-defined surface
102 area containing nine standardized steel-carriers, each with a one-centimeter diameter ("cough"), using
103 a specially designed tripod with a defined distance of 15 centimeters (Appendix Figure 1). In addition,
104 patients were asked to moisten nine steel carriers with saliva for ten seconds within their mouth
105 ("moisten"). After defined time points at room temperature (1 min, 5 min, 15 min, 30 min, 45 min, 90
106 min, 120 min and 240 min), the steel-carriers were placed in containers containing 2 mL cold Dulbecco's
107 modified Eagle's medium (DMEM complete, supplemented with 10 % (v/v) fetal calf serum, 1 % non-
108 essential amino acids, 100 IU/mL penicillin, 100 µg/mL streptomycin and 2 mM L-Glutamine) and
109 transported on ice to the biosafety level three laboratory of the Ruhr-University Bochum. The study was
110 conducted between November 2020 and April 2021.

111 *Virus culture.*

112 VeroE6 cells were seeded at 3×10^5 cells/well in a six well cell culture plate and incubated for at least
113 four hours at 37 °C and 5 % CO₂. Hereafter, the medium was replaced with 1·8 mL of patient swabs,
114 “cough” samples or “moisten” samples and 2·5 µg/mL amphotericin B was added. Over a maximum
115 period of ten days, cells were monitored daily for the appearance of a cytopathic effect (CPE), indicating
116 productive virus infection. Upon visible CPE, cells were harvested for RT-qPCR and the supernatant
117 (SN) was collected for viral titration and RT-qPCR. Viral titers in the SN were quantified by endpoint-
118 dilution and the 50 % tissue culture infective dose (TCID₅₀/mL), calculated according to Spearman and
119 Kärber [10].

120

121 *Reverse Transcription Quantitative PCR (RT-qPCR).*

122 SARS-CoV-2 RNA was isolated from the supernatant using AVL buffer and the QIAamp Viral RNA
123 Kit (QIAGEN®, www.qiagen.com) according to the manufacturer’s instructions. RNA was directly
124 subjected to one-step quantitative PCR (RT-qPCR) running a GoTaq Probe 1-Step RT-qPCR System
125 (Promega®, www.promega.com). Total RNA was purified from VeroE6 cells using the RNeasy Mini
126 Kit (QIAGEN®, www.qiagen.com). Subsequently, 500 ng of total RNA were reverse transcribed using
127 the PrimeScript™ RT Master Mix (Takara®, www.takarabio.com) and subjected to two-step RT-qPCR
128 running a GoTaq Probe 2-Step RT-qPCR System (Promega®, www.promega.com). RT-qPCR was
129 performed as described previously [11] using a light cycler LC480 to quantify the M-Gene abundance.

130

131 *Data analysis and sample size.*

132 Clinical patient parameters are expressed as mean ± SD or n (% of total). Results are expressed as means
133 (± SEM). Clinical characteristics were screened for correlations using Spearman’s correlation
134 coefficient. Statistical significance was defined as $\alpha=0\cdot05$. Statistical analysis was performed using
135 GraphPad Prism version 8.0.0 for Windows (GraphPad Software, San Diego, California USA,
136 www.graphpad.com). Sample size calculation was performed using G*Power Version 3.1.9.6 for
137 windows [12].

138

139 *Legal and ethical considerations.*

140 The study was conducted according to the revised principles of the Declaration of Helsinki and was
141 approved by the ethics committee of the Ruhr-University Bochum (registration number 20-7065) in
142 November 2020. All patients gave written informed consent.

143

144 *Sequencing and strain assignment*

145 RNA of the initial swaps was isolated using the NucleoSpin RNA kit (Macherey & Nagel) followed by
146 a reverse transcription utilizing the SuperScript IV together with Oligo dT and random hexamer primer
147 (Thermo Fisher) according to the manufacturers' instructions. Subsequently, the cDNA was subjected
148 to deep sequencing. Sequencing libraries were prepared from 4-5µl cDNA using NEBNext® ARTIC
149 SARS-CoV-2 Library Prep Kit for Illumina sequencing platforms (New England BioLabs® Inc.,
150 neb.com, catalog #E7650). Concentration and size of the cDNA amplicons and libraries were assessed
151 using Qubit fluorometer and Tapestation (High Sensitivity D1000 ScreenTape), respectively. High
152 throughput paired end sequencing was performed using Illumina MiSeq sequencer and MiSeq Reagent
153 Kit v2 (500-cycles) following the manufacturer's recommendations. Raw reads were quality checked,
154 trimmed and mapped to the SARS-CoV-2 reference sequence (NCBI Reference Sequence: NC_045512)
155 using QIAGEN CLC Genomics Workbench 21.0.5. After removing duplicates, partially full length
156 consensus sequences were extracted and samples were assigned to respective lineages using the pangolin
157 tool [13] (Table 2). In addition, variants in spike domains were identified and annotated using Geneious
158 prime 2021.2.2 (<https://www.geneious.com>).

159

160 **Results**

161 *Study cohort.*

162 A total of 15 patients (33.3 % female) between 39 and 89 years (mean age 70.5 (\pm 12.5) years) were
163 recruited. Baseline parameters including laboratory findings on admission are presented in Table 1. All
164 study patients had risk factors for a severe course of COVID-19 according to the criteria of the WHO
165 [8] and RKI [14]. Three (20 %) patients had up to two risk factors, while most patients had multiple risk
166 factors for a severe COVID-19 illness (3-4 risk factors: 7 (46.7 %), 5-6 risk factors: 2 (13.3 %), >6 risk
167 factors: 1 (6.7 %)). Body temperature on admission was 37.0 (\pm -0.9) °C. On the study day, 9 (60 %)
168 patients were categorized with a mild COVID-19 disease according to STACOB criteria (adaptation
169 following the WHO Therapeutics and COVID-19:living guideline [8]). Nasal oxygen support was
170 required by seven (46.7 %) patients. Mean peripheral oxygen saturation on admission was 93.4 % (SEM
171 \pm 7.4 %). None of the included patients were vaccinated against SARS-CoV-2.

172 On the day of the study, most patients had only mild symptoms (n= 9/15, 60 %) and were categorized
173 to mild COVID-19 disease. Follow-up revealed a clinical worsening in 10 patients and 3 died (2 patients
174 died of COVID-19, 1 patient died with COVID-19). Consistent with literature [15], a high level of
175 lactate dehydrogenase ($r=0.53$, $p=0.044$), leucocytes ($r=0.69$, $p=0.0056$), but also C-reactive protein
176 ($r=0.54$, $p=0.035$) on admission was significantly correlated with a more severe COVID-19 infection
177 (Appendix Figure 2). No significant correlation was found for COVID-19 severeness and other
178 described severeness predictors including age ($r=0.44$, $p=0.11$), alanine aminotransferase ($r=-0.31$,
179 $p=0.26$), aspartate aminotransferase ($r=0.07$, $p=0.81$), procalcitonin ($r=0.53$, $p=0.47$), or D-dimers
180 ($r=0.45$, $p=0.11$).

181

182 *SARS-CoV-2 viral load and sequencing.*

183 The patients' viral load before sample acquisition as determined with the combined nasopharyngeal and
184 oropharyngeal swabs are displayed in Table 2. Mean CT-values in RT-qPCR analyses were E-Gene
185 15.3 (SEM \pm 2.7), S-Gene 18.1 (SEM \pm 4.9) RdRP-Gene 17.2 (SEM \pm 3.7) and N-Gene 19.4 (SEM \pm
186 5.5). Viral variants included supposed wildtype (n=10, 66.7 %), variant of concern (VoC) Alpha (n=4,
187 26.7 %) and VoC Beta (n=1, 6.7 %). Deep sequencing using the pangolin tool [13] confirmed lineage

188 assignment for 14/15 (93.3 %) samples for nearly full-length genomes. Variant patterns identified by
189 detailed investigation of spike domains underlined lineage assignment according to RKI variant reports
190 [16] (Figure 1, Table 2).

191 Two patient samples were excluded from the study due to bacterial/fungal contamination within the
192 cultures (Appendix Table 1). Viral RNA could be detected from all (n=13/13) combined nasopharyngeal
193 and oropharyngeal swabs (inoculum) and viral RNA could be successfully detected within the
194 inoculated cell cultures (Figure 2, Appendix Figure 3). After inoculation with the “swabs”, viral loads
195 in the cells ranged from 2.23×10^1 to 2.03×10^9 RNA copies/50 ng and in the supernatant from not
196 detectable to 6.58×10^7 RNA copies/mL (Appendix Table 1). Infectious virus (“Infectivity”), determined
197 as TCID₅₀/mL, could be recovered from the nasal-oropharyngeal swabs from n=6/13 (46.2 %) patients
198 (Figure 2; P1, P2, P3, P5, P8, P10). Of note, despite inclusion criteria defining a high viral load (CT ≤
199 25, Table 2), some patients displayed lower viral loads at the time-point of the study, with none of the
200 swab samples resulting in productive virus infection in cell culture (Appendix Figure 3; P.11, P12, P13,
201 P14).

202

203 *Evaluation of SARS-CoV-2 transmission risk.*

204 Steel-carriers contaminated via intensive moistening with saliva (Figure 2, “moisten”) resulted in a
205 visible CPE and detectable viral RNA within the cells (at least one time point positive) in n=6/13 (46.2
206 %) cases (P1, P2, P3, P5, P9, P10). Despite the absence of a visible CPE in patient 6 and patient 10
207 (Figure 2, time points 30 and 45 min), viral RNA was detected in the cells and supernatants, and
208 infectious virus was quantified, indicating that harvesting might have been too early for the appearance
209 of CPE. Infectious virus was recovered from n=5/13 (38.5 %) contaminated steel carriers (Figure 2;
210 “SN infectivity” P1, P3, P5, P6, P10) with viral titers ranging from 5.59×10^1 to 8.68×10^5 TCID₅₀/mL.
211 In some patients, infectious virus could be recovered from the steel-carriers for up to 240 min after
212 incubation at room temperature (Figure 2; P1, P3, P5), underlining the environmental stability of SARS-
213 CoV-2 over several hours. For other samples (Figure 2; P2, P6, P10), infectious virus could be recovered
214 at early time points only (1 min, 15 min, 30 min, 45 min).

215 After contamination with coughing, viral RNA could be weakly detected within five of the cellular
216 samples (Figure 2; “cough” P1, P7, P8, P10, Appendix Figure 3; P11). However, none of the via
217 coughing contaminated surfaces resulted in productive cellular infection as determined by the
218 appearance of CPE and quantification of infectivity (Figure 2, Appendix Figure 3).

219

220 **Discussion**

221 While respiratory droplets and aerosols exhaled from infected individuals are currently considered the
222 main route of SARS-CoV-2 transmission, the role of droplet-contaminated surfaces (fomites) as a
223 potential source of infection remains controversial. Fomite-based transmission has been proposed to
224 contribute to the spread of other common respiratory pathogens [17,18], including experimental studies
225 examining the transfer of infectious influenza viruses and/or respiratory syncytial virus between hands
226 and surfaces [19]. However, current evidence points towards a low risk of SARS-CoV-2 transmission
227 in this scenario [1,20], requiring a timely order of specific events [7]. To examine this potential risk of
228 SARS-CoV-2 surface transmission, we assessed the amount of SARS-CoV-2 genomic material and
229 infectious viral particles after contamination by individuals infected with SARS-CoV-2 over time. The
230 results of the present study highlight that viral contamination via coughing on surfaces does not represent
231 a major risk of transmission.

232 Our study cohort was characterized by non-vaccinated, hospitalized, mostly elderly patients with
233 multiple comorbidities. Since the vaccination program in Germany started in December 2020 (during
234 the study period), none of the patients were vaccinated against SARS-CoV-2. This cohort may therefore
235 be quite representative for hospitalized patients during the first and second COVID-19 wave in most
236 countries [21]. However, since the proportion of unvaccinated people in the population remains
237 significant [22] and completely vaccinated individuals can still be infected and often present with high
238 viral loads [23], the present results remain of significant importance for the ongoing pandemic. Initially,
239 we were able to recruit patients in early stages of COVID-19 due to outbreaks in hospitals and
240 rehabilitation facilities and subsequently early referral to the isolation ward. Later, patients were
241 diagnosed in ambulatory settings and predominantly admitted via the emergency department, often only
242 when clinical conditions deteriorated and ambulatory management failed. The hospitalized cohort may

243 explain the high rate of risk factors and, consequently, follow-up mortality in the present study.
244 However, the present cohort is characterized by high viral load. Hence, a high transmission rate can be
245 assumed [24], supporting the main conclusion of the study. Of note, several laboratory parameters on
246 admission significantly correlated with a severe outcome. However, the present study was not powered
247 for this analysis and therefore, these correlations need to be considered exploratory.

248 Infectious virus could be recovered from the combined nasopharyngeal and oropharyngeal swabs and
249 steel-carriers contaminated via intensive “moistening” from a significant number of patients. For some
250 patients, infectious virus could be recovered for up to 240 min (Figure 2). This demonstrates that
251 infectious virus can be transferred from saliva by moistening onto surfaces from patients and can be
252 recovered for several hours. As described previously, we did not observe differences of the viral stability
253 between the wildtype and VoCs (Alpha and Beta), implying a comparable environmental stability [25].

254 The stability of SARS-CoV-2 on surfaces is likely determined by a combination of factors, including
255 the initial amount of infectious virus deposited, possible presence of antibodies within the sputum and
256 environmental parameters. Given the controlled laboratory conditions for virus recovery as herein
257 presented (e.g., large inoculums, small surface area, no UV exposure), the viral survival observed might
258 therefore differ from real-life scenarios, necessitating careful interpretation. For example, a recent study
259 observed a low transfer efficiency between different surfaces and fingertips following an initial drying
260 of an inoculum with a low viral titer (1×10^4 TCID₅₀/mL) [20]. Hence, even if sufficient viable virus is
261 deposited on a surface, a timely contact and high transfer efficiency are required to transfer an infectious
262 dose, which subsequently needs to be exposed towards susceptible tissues (e.g., mucosa, eyes).

263 Importantly, we did not observe the recovery of infectious virus after patients coughed onto a surface,
264 implying that droplet-contamination of surfaces does not present a major transmission route for SARS-
265 CoV-2. Given that non-hospitalized and pre-symptomatic, asymptomatic, and mildly symptomatic
266 individuals across different age groups frequently display viral loads within a comparable range [26],
267 similar observations as herein observed for elderly and hospitalized patients can be inferred.

268 Our study encompasses several limitations. Patients were encouraged to forcefully cough twice to
269 contaminate surfaces. However, we cannot exclude that potentially repeated coughing over a prolonged
270 time results in a more effective virus transfer compared to our controlled conditions. Moreover, sneezing

271 can produce significantly more infectious droplets potentially containing infectious particles, therefore,
272 we cannot exclude potential transmissions via other this route. Furthermore, a selection bias cannot be
273 excluded, and the included patients are not demographically representative. Strengths of the present
274 study include the high viral load of the patients included, a standardized protocol for sample acquisition,
275 laboratory procedures and the inclusion of VoC.

276

277 **Conclusion**

278 The present study provides evidence that fomites may not be as critical in the transmission of SARS-
279 CoV-2 as initially suspected. However, the present study also provides evidence that infectious SARS-
280 CoV-2 can be found on some fomites after contamination with extensive amounts of saliva. Therefore,
281 common hygiene practices (e.g., coughing/sneezing into elbows, hand hygiene) should still be
282 considered to avoid the surface contamination and virus transfer. Face masks may further mitigate the
283 risk of fomite transmission. Collectively, our findings suggest that fomites contaminated with
284 coughing are unlikely to be an important source of SARS-CoV-2 transmission.

285

286 **Declarations**

287 *Ethics approval and consent to participate*

288 The study was conducted according to the revised principles of the Declaration of Helsinki and was
289 approved by the ethics committee of the Ruhr-University Bochum (registration number 20-7065) in
290 November 2020. All patients gave written informed consent.

291

292 *Consent for publication*

293 The study is published with patients consent.

294

295 *Availability of data and materials*

296 The datasets used and/or analyzed during the current study are available from the corresponding author
297 on reasonable request.

298

299 *Competing Interests*

300 The authors declare no competing interests.

301

302 *Funding*

303 E.S was supported by the VIRus ALliance NRW (VIRAL) from Ministry of Culture and Science of the
304 State of North Rhine-Westphalia (323-8.03-151826).

305

306 *Author Contributions*

307 Conceptualization, T.L.M., M.D., W.E.S., E.S., D.R.Q., S.P.

308 Methodology, T.L.M., M.D., D.R.Q., S.P.

309 Investigation, T.L.M., M.D., E.V., N.H.

310 Writing –Original Draft, S.P., Y.B.

311 Writing –Review & Editing, T.L.M., M.D., E.V., N.H., G.K., D.T., H.P.N., J.S., W.E.S., E.S., D.R.Q.,

312 S.P.

313 Visualization, T.L.M., D.T., S.P.

314 Resources, W.E.S., E.S., D.R.Q., S.P.

315 Supervision, D.R.Q., S.P.

316

317 *Acknowledgements*

318 We would like to thank all members of the Molecular and Medical Virology at the Ruhr-University

319 Bochum for their support and fruitful discussions. Furthermore, we are grateful for the support of the

320 healthcare workers at St. Josef-Hospital Bochum and appreciate all patients who volunteered to

321 participate in this study.

322 **References**

- 323 1. Wang CC, Prather KA, Sznitman J, et al. Airborne transmission of respiratory viruses. *Science*
324 **2021**; 373.
- 325 2. Kratzel A, Steiner S, Todt D, et al. Temperature-dependent surface stability of SARS-CoV-2. *J*
326 *Infect* **2020**; 81:452–82.
- 327 3. van Doremalen N, Bushmaker T, Morris DH, et al. Aerosol and Surface Stability of SARS-CoV-
328 2 as Compared with SARS-CoV-1. *N Engl J Med* **2020**; 382:1564–7.
- 329 4. Chin A, Chu J, Perera M, et al. Stability of SARS-CoV-2 in different environmental conditions.
330 *The Lancet Microbe* **2020**; 1.
- 331 5. Kampf G, Brüggemann Y, Kaba HEJ, et al. Potential sources, modes of transmission and
332 effectiveness of prevention measures against SARS-CoV-2. *J Hosp Infect* **2020**; 106:678–97.
- 333 6. Centers of Disease Control and Prevention. Science Brief: SARS-CoV-2 and Surface (Fomite)
334 Transmission for Indoor Community Environments **2021**. Available at:
335 [https://www.cdc.gov/coronavirus/2019-ncov/more/science-and-research/surface-](https://www.cdc.gov/coronavirus/2019-ncov/more/science-and-research/surface-transmission.html)
336 [transmission.html](https://www.cdc.gov/coronavirus/2019-ncov/more/science-and-research/surface-transmission.html).
- 337 7. Goldman E. Exaggerated risk of transmission of COVID-19 by fomites. *The Lancet Infectious*
338 *Diseases* **2020**; 20:892–3.
- 339 8. Who Headquarters. Therapeutics and COVID-19: living guideline. World Health Organization
340 **2021**.
- 341 9. Ständiger Arbeitskreis der Kompetenz- und Behandlungszentren für Krankheiten durch
342 hochpathogene Erreger. Hinweise zu Erkennung, Diagnostik und Therapie von Patienten mit
343 COVID-19 **2020**.
- 344 10. Wulff NH, Tzatzaris M, Young PJ. Monte Carlo simulation of the Spearman-Kaerber TCID50. *J*
345 *Clin Bioinform* **2012**; 2:5.
- 346 11. Toptan T, Hoehl S, Westhaus S, et al. Optimized qRT-PCR Approach for the Detection of Intra-
347 and Extra-Cellular SARS-CoV-2 RNAs. *Int J Mol Sci* **2020**; 21.

- 348 12. Faul F, Erdfelder E, Lang A-G, Buchner A. G*Power 3: a flexible statistical power analysis
349 program for the social, behavioral, and biomedical sciences. *Behavior Research Methods* **2007**;
350 39:175–91.
- 351 13. O'Toole Á, Scher E, Underwood A, et al. Assignment of epidemiological lineages in an emerging
352 pandemic using the pangolin tool. *Virus Evolution* **2021**; 7:veab064.
- 353 14. Robert Koch Insitut. Epidemiologischer Steckbrief zu SARS-CoV-2 und COVID-19 **2021**.
354 Available at: https://www.rki.de/DE/Content/InfAZ/N/Neuartiges_Coronavirus/Steckbrief.html.
- 355 15. Zhang JJY, Lee KS, Ang LW, Leo YS, Young BE. Risk Factors for Severe Disease and Efficacy
356 of Treatment in Patients Infected With COVID-19: A Systematic Review, Meta-Analysis, and
357 Meta-Regression Analysis. *Clinical Infectious Diseases* **2020**; 71:2199–206.
- 358 16. Robert Koch- Institut. Bericht zu Virusvarianten von SARS-CoV-2 in Deutschland (Stand:
359 07.07.2021). Available at:
360 [https://www.rki.de/DE/Content/InfAZ/N/Neuartiges_Coronavirus/DESH/Bericht_VOC_2021-](https://www.rki.de/DE/Content/InfAZ/N/Neuartiges_Coronavirus/DESH/Bericht_VOC_2021-07-07.pdf?__blob=publicationFile)
361 [07-07.pdf?__blob=publicationFile](https://www.rki.de/DE/Content/InfAZ/N/Neuartiges_Coronavirus/DESH/Bericht_VOC_2021-07-07.pdf?__blob=publicationFile).
- 362 17. Kraay ANM, Hayashi MAL, Hernandez-Ceron N, et al. Fomite-mediated transmission as a
363 sufficient pathway: a comparative analysis across three viral pathogens. *BMC Infect Dis* **2018**;
364 18:540.
- 365 18. Boone SA, Gerba CP. Significance of fomites in the spread of respiratory and enteric viral disease.
366 *Appl Environ Microbiol* **2007**; 73:1687–96.
- 367 19. Leung NHL. Transmissibility and transmission of respiratory viruses. *Nat Rev Microbiol* **2021**;
368 19:528–45.
- 369 20. Todt D, Meister TL, Tamele B, et al. A realistic transfer method reveals low risk of SARS-CoV-
370 2 transmission via contaminated euro coins and banknotes. *iScience* **2021**; 24:102908.
- 371 21. Mikami T, Miyashita H, Yamada T, et al. Risk Factors for Mortality in Patients with COVID-19
372 in New York City. *J GEN INTERN MED* **2021**; 36:17–26.
- 373 22. Tram KH, Saeed S, Bradley C, et al. Deliberation, Dissent, and Distrust: Understanding distinct
374 drivers of COVID-19 vaccine hesitancy in the United States. *Clinical Infectious Diseases* **2021**.

- 375 23. Butt AA, Nafady-Hego H, Chemaitelly H, et al. Outcomes Among Patients with Breakthrough
376 SARS-CoV-2 Infection After Vaccination. *Int J Infect Dis* **2021**; 110:353–8.
- 377 24. Meyerowitz EA, Richterman A, Gandhi RT, Sax PE. Transmission of SARS-CoV-2: A Review
378 of Viral, Host, and Environmental Factors. *Ann Intern Med* **2021**; 174:69–79.
- 379 25. Meister TL, Fortmann J, Todt D, et al. Comparable environmental stability and disinfection
380 profiles of the currently circulating SARS-CoV-2 variants of concern B.1.1.7 and B.1.351. *J*
381 *Infect Dis* **2021**.
- 382 26. Jones TC, Biele G, Mühlemann B, et al. Estimating infectiousness throughout SARS-CoV-2
383 infection course. *Science* **2021**; 373:eabi5273.
- 384 27. Levey AS, Stevens LA, Schmid CH, et al. A new equation to estimate glomerular filtration rate.
385 *Ann Intern Med* **2009**; 150:604–12.
- 386 28. McWilliam H, Li W, Uludag M, et al. Analysis Tool Web Services from the EMBL-EBI. *Nucleic*
387 *Acids Research* **2013**; 41:W597-600.
- 388 29. Dereeper A, Guignon V, Blanc G, et al. Phylogeny.fr: robust phylogenetic analysis for the non-
389 specialist. *Nucleic Acids Research* **2008**; 36:W465-9.
- 390 30. Kumar S, Stecher G, Li M, Knyaz C, Tamura K. MEGA X: Molecular Evolutionary Genetics
391 Analysis across Computing Platforms. *Molecular Biology and Evolution* **2018**; 35:1547–9.
- 392

Table 1: Baseline parameters including laboratory findings of the study group

Parameter	Unit	Normal range	Result
Participants	n	n/a	15
Age	years	n/a	70.5 (± 12.3)
Male / female (% female)	n	n/a	10/5 (33.3 %)
BMI	kg/m ²		28.8 (± 6.0)
Arterial hypertension	n	n/a	10 (66.7 %)
- ACE inhibitors	n	n/a	3 (20 %)
Dyslipidemia	n	n/a	5 (33.3 %)
Diabetes mellitus	n	n/a	5 (33.3 %)
Currently smoking	n	n/a	8 (53.3 %)
Family history of CVD	n	n/a	4 (26.7 %)
Immunosuppression	n	n/a	5 (33.3 %)
Active malignancy	n	n/a	4 (26.7 %)
Chronic pulmonary disease	n	n/a	7 (46.7 %)
Chronic renal disease	n	n/a	3 (20 %)
Leucocytes	/μl	4600-9500	6182.7 (± 3560.0)
Hemoglobin	g/dl	14.0-18.0	11.5 (± 2.6)
Thrombocytes	/μl	150000-400000	175933.3 (± 64077.5)
D-dimers	μg/ml	<0.5	1.3 (± 0.9)
Lactate dehydrogenase	U/l	135-225	250 (± 63)
eGFR	ml/min/1.73m ²	>90	63.4 (± 26.4)
Procalcitonin	ng/ml	<0.5	33.5 (± 124.9)
C-reactive protein	mg/l	<5.0	41.8 (± 38.9)
pH		7.35-7.45	7.4 (± 0.1)
Bicarbonate	mmol/l	22-26	26.1 (± 4.3)
Peripheral oxygen saturation	%	≥95	93.4 (± 7.4)
Air Temperature	°C	n/a	5.5 (± 5.5)
Air humidity	%	n/a	72.8 (± 18.7)

Data are presented as n (% of total) or mean (± SD). Risk factors for severe COVID-19 were defined as age > 50 years, male sex, smokers, adiposity (BMI >30), Downs syndrome, history of cardiovascular diseases, chronic lung disease, chronic renal disease, psychiatric diseases, diabetes mellitus, malignant or hemic diseases or immunodeficiency [14]. eGFR was estimated using Chronic Kidney Disease Epidemiology Collaboration (CKD-EPI) equation [27]. Peripheral oxygen saturation was determined on a finger, using a pulse oximeter. ACE = angiotensin converting enzyme. BMI = body mass index. CVD = cardiovascular disease. eGFR = estimated glomerular filtration rate.

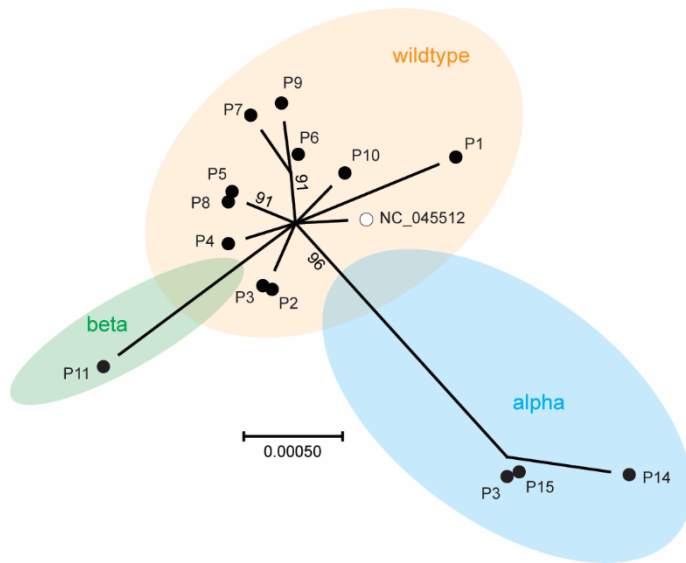
Table 2: Viral load before sample acquisition using Naso Oropharyngeal swabs

Patient	Initial CT values (<i>E-Gene/S-Gene/RdRP-Gene/N-Gene; VOC-Analyses*</i>)	Deep Sequencing	Mutations identified in spike domains
P1	13/ - /17/15	B.1.389	D614G , T723I
P2	14/ - /16/17	B.1.1.70	D614G
P3	13/ - /14/15	B.1.1.70	D614G
P4	16/ - /17/20	B.1.1.70	D614G
P5	12/ - /13/14	B.1.221	S98F, D614G
P6	17/ - /18/16	B.1.177.7	A222V, D614G
P7	21/ - /22/19	B.1.177	A222V, D614G , A1020V
P8	16/ - /16/18	B.1.221	S98F, L141LF, D614G
P9	- /16/16/14	B.1.177	A222V, D614G
P10	- /12/13/13	B.1.1.153	D614G
P11	- /24/25/23; VOC B1.351*	B.1.351	H69Y, D80A , D215G , del242-244, K417KT , E484EK , N501NY , D614G , A701V
P12	- /24/23/32; VOC B1.1.7*	- #	- #
P13	- /17/16/25; VOC B1.1.7*	B.1.1.7	del144 , N501NY , A570D , D614G , P681H , A694AS, T716I , S982A , D1118H
P14	- /13/12/21; VOC B1.1.7*	B.1.1.7	del69-70 , S98F, D138DH, H245Y, N501NY , A570D , D614G , P681H , A694AS, T716I , S982A , D1118DH
P15	- /21/20/29; VOC B1.1.7*	B.1.1.7	del69-70 , del144 , N501Y , A570D , D614G , P681H , A694AS, T716I , S982A , D1118H

Data is presented as individual data. Lineage of deep sequencing is presented according to the pangolin tool [13]. CT = cycle threshold resulting from RT-PCR performed at St. Josef-Hospital Bochum. VoC = variants of concern. *VoC-Analyses started in the midst of the study period in February 2020 and was performed via melting curve analysis.

#no sufficient material available. **bold:** characteristic mutations associated with VOC according to RKI [16].

396 **Figures**

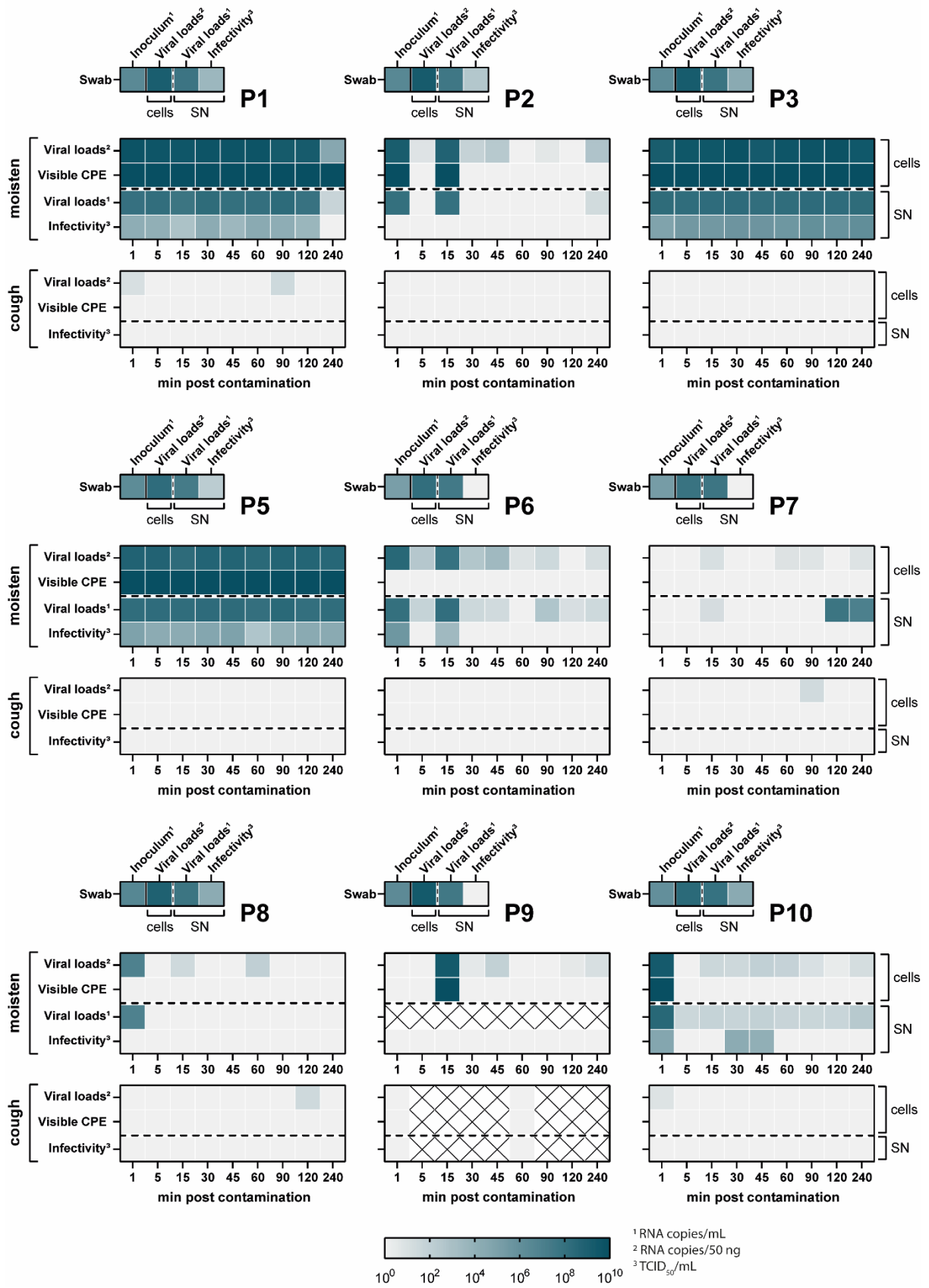


397

398 **Figure 1: Viral Isolates analyzed in this study.** Spike domains (nt) of 14 samples (black dots) and the
399 SARS-CoV-2 reference genome NC_045512 (open circle) were assembled using Clustal Omega at
400 EMBL-EBI [28]. Phylogenetic analysis was conducted with “One click” at Phylogeny.fr [29] and tree
401 was visualized with MEGA X [30]. Scale bar indicates the number of changes per site in maximum
402 likelihood inference (HKY85 substitution model); numbers at branches represent bootstrap values (1000
403 repetitions; cut-off $\geq 70\%$).

404

405



406

407 **Figure 2: Quantification of viral loads and infectivity of patient swabs, “moisten” samples and**

408 **“cough” samples that could be successfully recovered in cell culture. VeroE6 cells were inoculated**

409 **with the patient material and monitored on a daily basis. Upon the emergence of cytopathic effects, the**

410 supernatant was collected to determine viral loads by RT-qPCR (RNA copies/mL; indicated by ¹) and
411 viral titers by an endpoint-dilution assay (TCID₅₀/mL, indicated by ³). Additionally, RNA was isolated
412 from the cells and subjected to RT-qPCR to determine viral loads (RNA copies/50 ng total RNA,
413 indicated by ²). For each patient (P1-P10), three panels were designed. The top small panel includes
414 exclusively data regarding the patient swabs, while the larger middle panel shows the data for the
415 “moisten” samples and the lower panel the data collected from the “cough” samples. For “moisten” and
416 “cough” samples viral loads and infectivity at nine different time points were determined. The color
417 indicates the amount of virus being detectable in each sample, with light grey being the lower limit of
418 detection to dark blue resulting in 10¹⁰ RNA copies/mL, RNA copies/50 ng or TCID₅₀/mL. The visible
419 CPE was rated two dimensionally, with light grey being “no visible CPE” and dark green being “visible
420 CPE”.