

1 **Vaccine effectiveness of two and three doses of BNT162b2 and CoronaVac against**
2 **COVID-19 in Hong Kong**

3

4 Martina E. McMenamin¹, Joshua Nealon¹, Yun Lin¹, Jessica Y. Wong¹, Justin K. Cheung¹,
5 Eric H. Y. Lau^{1,2}, Peng Wu^{1,2}, Gabriel M. Leung^{1,2}, Benjamin J. Cowling^{1,2}

6

7 **Affiliations:**

8 1. World Health Organization Collaborating Centre for Infectious Disease Epidemiology and
9 Control, School of Public Health, Li Ka Shing Faculty of Medicine, The University of Hong
10 Kong, Hong Kong Special Administrative Region, China

11 2. Laboratory of Data Discovery for Health, Hong Kong Science and Technology Park, Hong
12 Kong Special Administrative Region, China

13

14 **Corresponding authors:**

15 Joshua Nealon (jnealon@hku.hk) and Ben Cowling (bcowling@hku.hk)

16

17 Running head: COVID-19 vaccine effectiveness in Hong Kong

18 Word count (abstract): 249

19 Word count (main text): 3,484

20

21 **Abstract**

22 **Background:** Hong Kong maintained extremely low circulation of SARS-CoV-2 until a
23 major community epidemic of Omicron BA.2 starting in January 2022. Both mRNA
24 BNT162b2 (BioNTech/Fosun Pharma) and inactivated CoronaVac (Sinovac) vaccines are
25 widely available, however coverage has remained low in older adults. Vaccine effectiveness in
26 this predominantly infection-naïve population is unknown.

27 **Methods:** We used individual-level case data on mild/moderate, severe/fatal and fatal
28 hospitalized COVID-19 from December 31, 2021 to March 8, 2022, along with census
29 information and coverage data of BNT162b2 and CoronaVac. We used a negative binomial
30 model, adjusting for age and calendar day to estimate vaccine effectiveness of one, two and
31 three dose schedules of both vaccines, and relative effectiveness by number of doses and
32 vaccine type.

33 **Findings:** A total of 12.7 million vaccine doses were administered in Hong Kong's 7.3
34 million population, and we analyzed data from confirmed cases with mild/moderate
35 (N=5,474), severe/fatal (N=5,294) and fatal (N=4,093) COVID-19. Two doses of either
36 vaccine protected against severe disease and death, with higher effectiveness among adults
37 ≥ 60 years with BNT162b2 (VE: 88.2%, 95% confidence interval, CI: 84.4%, 91.1%)
38 compared to CoronaVac (VE: 74.1%, 95% CI: 67.8%, 79.2%). Three doses of either vaccine
39 offered very high levels of protection against severe outcomes (VE: 98.1%, 95% CI: 97.1%,
40 98.8%).

41 **Interpretation:** Third doses of either BNT162b2 or CoronaVac provide substantial
42 additional protection against severe COVID-19 and should be prioritized, particularly in older
43 adults who received CoronaVac primary schedules. Longer follow-up is needed to assess
44 persistence of different vaccine platforms and schedules.

45 **Funding:** COVID-19 Vaccines Evaluation Program, Chinese Center for Disease Control and
46 Prevention

47 **INTRODUCTION**

48 Hong Kong Special Administrative Region of China (Hong Kong; population 7.3 million) has
49 pursued a COVID-19 elimination strategy since January 2020 involving stringent social
50 distancing measures, border entry restrictions, isolation of cases and quarantine of close
51 contacts, and the use of personal protective measures.¹ Consequently, the disease had been
52 largely controlled through December 2021 with four previous epidemic waves resulting in a
53 total of 12,606 cases (<2 per 1,000) and 207 deaths (<3 per 100,000). Since February 2021,
54 both inactivated (Sinovac; CoronaVac) and mRNA (BioNTech/Fosun Pharma; BNT162b2)
55 vaccines have been widely available with residents offered the choice of either. However, by
56 January 2022, two-dose vaccine coverage had only reached 46% in older adults 70-79 years of
57 age and 18% in those aged ≥ 80 years.²

58

59 A major community epidemic of COVID-19 Omicron variant (B.1.1.529) lineage BA.2 began
60 in early January 2022, resulting in 649,454 laboratory confirmed cases, 313,127 cases reported
61 by rapid antigen tests and nearly 5,000 deaths to March 17, 2022.^{2,3} Vaccination coverage has
62 since risen steadily but remains low in the most vulnerable, with two-dose coverage at 66% and
63 37% in 70-79 and ≥ 80 year olds respectively as of March 17, 2022. Third vaccine doses were
64 recommended first for priority groups and then for the general public on 1 January 2022, to be
65 given six months after the second dose.^{4,5} Third-dose uptake has been highest in the 40-59y age
66 group (46% as of March 17, 2022) and lower in older adults (30% in 70-79 year olds; 10% in
67 those ≥ 80). Efforts to increase vaccine uptake in older and high-risk groups are underway,
68 including reducing the duration between first and second doses for care home residents,
69 extending vaccination clinic operating hours and deployment of vaccine outreach teams to care
70 homes, housing estates and to residents with limited mobility.^{6,7}

71

72 International data has shown vaccination with BNT162b2 reduces the frequency of severe
73 outcomes, and to a lesser extent, infection for variants circulating prior to Omicron.⁸⁻¹⁵ Waning
74 of protection has been observed in multiple contexts, in particular against infection,¹⁶⁻¹⁸ and
75 recent studies have provided early indications of reduced effectiveness of BNT162b2 against
76 the Omicron variant.¹⁹⁻²¹ Evidence on vaccine performance against the more transmissible
77 Omicron subvariant BA.2 remains very limited, as is data on the performance of the inactivated
78 CoronaVac vaccine.²² Limited observational evidence suggests strong and durable protection
79 against severe disease and death, with transient protection against milder symptomatic
80 disease.²³⁻²⁶ With a largely infection-naïve population and two COVID-19 vaccines in
81 widespread use, Hong Kong represents a unique environment for monitoring vaccine
82 effectiveness (VE) against Omicron BA.2. In this study we estimated VE of one, two and
83 three doses of BNT162b2 and CoronaVac, their relative effectiveness, and the additional
84 protection offered by third doses against mild/moderate infections, severe/fatal disease and
85 death.

86

87 **METHODS**

88 *Study design and population*

89 We assessed VE of the BNT162b2 and CoronaVac vaccines using an ecological study design,
90 which has been previously employed to provide estimates of VE in Israel.²⁷ The study
91 population consisted of residents of Hong Kong aged 20 years and over, where the population
92 with zero, one, two or three doses of either vaccine at risk at a given time was derived using
93 detailed data from the vaccination programme and population census. Information on all
94 laboratory-confirmed SARS-CoV-2 cases in Hong Kong from December 31, 2021 to March
95 8, 2022 was obtained from nationwide individual level surveillance data provided by the

96 Centre for Health Protection and linked to clinical outcome data provided by the Hospital
97 Authority.

98

99 ***Ethical approval***

100 This project received approval from the Institutional Review Board of the University of Hong
101 Kong.

102

103 ***Infections and outcomes***

104 Extensive PCR testing for SARS-CoV-2 is conducted in public hospitals, community test
105 centres and private laboratories in Hong Kong. Testing is free-of-charge or available at low
106 cost, and required for those who exhibit COVID-19 like symptoms, or following contact
107 tracing based on exposure history or residential location. Regular screening is also required of
108 certain professions, in particular those working with older adults or vulnerable persons.
109 Positive rapid test results have been recognised as confirmed infections since February 25,
110 2022 and included in official case counts from March 7, 2022. Data on all laboratory-
111 confirmed cases between December 31, 2021 and March 8, 2022 were extracted and cases
112 classified as ‘imported’, i.e. detected in on-arrival quarantine, were excluded due to their non-
113 representative SARS-CoV-2 exposure and vaccination histories. Sequencing of a subset of
114 cases each day indicates that fewer than 1% of cases and deaths during the fifth wave have
115 occurred with the Delta variant, with the remaining infections attributed to the Omicron BA.2
116 lineage.

117

118 Hong Kong has an advanced public and private healthcare system whereby private clinics
119 comprise most primary care and government hospitals provide approximately 90% of hospital
120 medical services at very low cost to patients.²⁸ Up until mid-February 2022, all laboratory-

121 confirmed COVID-19 cases were admitted to hospitals for isolation and standardized clinical
122 management, regardless of symptom presentation, with their hospitalization records stored in
123 the data system managed by the Hospital Authority. After mid-February 2022, due to the
124 large number of incident cases, hospitalisation was reserved for patients with more severe
125 disease, and milder cases were required to isolate at dedicated government quarantine
126 facilities or at home. In the Hospital Authority data system, records of patients' test results,
127 medication and condition changes were documented and integrated into a centralized
128 database from which we extracted relevant information on those experiencing mild/moderate
129 disease prior to February 16, 2022 and severe disease and death at any time. We excluded
130 those with conflicting information in the database, i.e. persons with a worst recorded
131 condition of 'mild' but also experiencing a fatal outcome within hospital. Severe disease was
132 defined as any severe, critical or fatal COVID-19 case (definitions for each in Appendix).

133

134 *Population uptake of COVID-19 vaccines*

135 Data on the estimated population size at the end of 2021 by age and sex were obtained from the
136 Census and Statistics Department of the Hong Kong Special Administrative Region
137 Government. Data on the number of persons vaccinated with either the BNT162b2 or
138 CoronaVac vaccines in Hong Kong each day since February 22, 2021 are available in a
139 national vaccination database provided by the Department for Health. Data on all vaccinations
140 that had occurred up to March 8, 2022, including vaccinee age and the type and date of receipt
141 of each dose of vaccine, were extracted on March 10, 2022. Vaccination information for all
142 cases in the surveillance data was cross checked with Hospital Authority records and any cases
143 with discrepancies were excluded.

144

145 Those who received vaccines other than BNT162b2 or CoronaVac, or who received a mixed
146 primary series of one dose of BNT162b2 and one dose of CoronaVac, were excluded from the
147 analysis. In addition, for the purposes of this analysis we also exclude those who switched
148 vaccine platform after the second dose, that is, those who received two doses of CoronaVac and
149 a third dose of BNT162b2 and those who have received a primary series of BNT162b2 and a
150 third dose of CoronaVac. Cases with known prior COVID-19 infection were also excluded.

151

152 *Statistical analysis*

153 Incidence rates were calculated according to the number of doses of COVID-19 vaccination
154 received (none, one, two or three) for each age group (20-29, 30-39, 40-49, 50-59, 60-69, 70-
155 79, ≥ 80 years) and calendar day throughout the study period. Additional stratification by
156 vaccine type was included to estimate VE for each vaccine type and relative VE (rVE)
157 between two and three doses of each vaccine. Vaccination status was categorised according to
158 the date of vaccination plus a 14-day lag for all doses, to allow for the delay in immune
159 response to vaccination. Daily numbers of persons in each vaccination category were inferred
160 from the uptake data assuming that individuals received the same vaccine for first and second
161 dose (aligned with Hong Kong guidelines), and using aggregate data by age on vaccine
162 switching for the third dose. The population at risk in each stratum was matched to the report
163 date of cases, and cumulative numbers of previous SARS-CoV-2 infections within each
164 group were removed from the population at risk at each time point. Incidence rate ratios
165 (IRR) were estimated using a negative binomial rate model for the daily counts of cases
166 adjusted for age group and calendar day including the logarithm of person-time as an offset
167 term in the model to account for differing numbers at risk within each strata. VE was defined
168 as $(1-IRR)\times 100\%$.

169

170 **RESULTS**

171 A total of 486,074 persons had confirmed SARS-CoV-2 infection during the study period
172 from December 31, 2021 to March 8, 2022. The case data were linked to the Hospital
173 Authority dataset to determine their clinical outcomes and those with complete age and
174 vaccination records were extracted. Of these, 5,474 persons were recorded as having
175 mild/moderate disease between December 31, 2021 and February 15, 2022. During the entire
176 study period from December 31, 2021 to March 8, 2022, 5,294 persons with severe/fatal
177 disease and 4,093 with fatal disease were included (Table 1).

178

179 Up to March 8, 2022, a total of 12.7 million vaccine doses had been administered in Hong
180 Kong. Severe disease or death occurred a median of 161 (interquartile range, IQR: 73 to 207)
181 days after the second vaccination in those vaccinated with two doses of BNT162b2, and 127
182 (IQR: 51 to 162) among those who received two doses of CoronaVac. Those experiencing
183 severe and fatal outcomes after a third dose tested positive a median of 52 (IQR: 38 to 70)
184 days and 45 (IQR: 24 to 100) days after vaccination with BNT162b2 and CoronaVac
185 respectively. The distribution of mild cases according to age and vaccination status were
186 similar to the population, with severe disease and death occurring predominantly in the
187 unvaccinated older population (Figure 2).

188

189 ***VE after receipt of two doses***

190 We found two doses of CoronaVac provided no protection against mild/moderate disease
191 across all age groups, with some protection offered by BNT162b2 in younger age groups
192 (VE: 31.0%, 95% CI: 1.6%, 51.7%). However, both vaccines were estimated to have high
193 effectiveness against severe disease. Limited differences in vaccine effectiveness were
194 observed for severe outcomes in younger adults, where VE was estimated to be 95.2% (95%

195 CI: 92.9%, 96.8%) for BNT162b2 and 91.7% (95% CI: 87.8%, 94.4%) for CoronaVac (Table
196 2). The difference in VE was more pronounced for older adults, with higher effectiveness
197 among adults >60 years who received BNT162b2 (VE: 88.2%, 95% confidence interval, CI:
198 84.4%, 91.1%) compared to CoronaVac (VE: 74.1%, 95% CI: 67.8%, 79.2%). When broken
199 down further by age, we estimated that VE was 91.1% (95% CI: 85.4%, 94.6%) for
200 BNT162b2 and 82.6% (74.2%, 88.2%) for CoronaVac in those 60-69y, reducing to 84.5%
201 (95% CI: 75.5%, 90.2%) and 60.2% (95% CI: 43.9%, 71.8%) among those ≥ 80 y for
202 BNT162b2 and CoronaVac, respectively. This was also observed for the mortality endpoint,
203 where in adults aged ≥ 80 y two doses of BNT162b2 offered a higher level of protection
204 against fatal disease (88.2%, 95% CI: 80.2%, 93.0%) compared to two doses of CoronaVac
205 (66.8%, 95% CI: 51.9%, 77.0%).

206

207 We compared the two-dose schedules of both vaccines and found no significant differences
208 between BNT162b2 and CoronaVac for mild disease in any age group. Superiority of the
209 two-dose BNT162b2 schedule was estimated for severe/fatal disease in adults ≥ 60 y (relative
210 VE: 54.6%, 95% CI: 38.7%, 66.4%). This was also the case for mortality in those ≥ 60 y
211 (relative VE: 58.5%, 95% CI: 70.7%, 41.3%). No differences between vaccines were found
212 against severe/fatal or fatal COVID-19 in adults 20-59y.

213

214 ***VE after receipt of three doses***

215 We estimated three doses of both vaccines offered very high protection against severe disease
216 (98.1%, 95% CI: 97.1%, 98.8%) and mortality (98.6%, 95% CI: 97.7%, 99.2%) which was
217 sustained within all age groups (Table 2). Vaccine estimates were very similar for both
218 vaccines against severe and fatal outcomes. Three doses of BNT162b2 was estimated to have
219 a VE of 71.5% (95% CI: 54.5%, 82.1%) against mild/moderate disease in younger adults

220 while for three doses of CoronaVac the VE was estimated as 42.3% (95% CI: 11.4%, 62.4%)
221 against the same outcome.

222

223 *Relative VE of three versus two doses*

224 We estimated the relative effect of three doses versus two doses of each vaccine type (Table
225 3). For mild/moderate disease we find an additional benefit of a third dose of BNT162b2 in
226 younger (relative VE: 58.6%, 95% CI: 34.4%, 73.9%) and older (relative VE: 63.8%, 95%
227 CI: 26.7%, 82.1%) adults who had previously received two doses of BNT162b2. A third dose
228 of CoronaVac increased protection (relative VE: 57.0%, 95% CI: 23.4%, 75.9%) in older
229 adults who had received two doses of CoronaVac, with no benefit observed in the younger
230 age category. For severe/fatal disease we found an additional benefit of a third dose in adults
231 of all ages for both vaccine types, with relative VE of 71.9% (95% CI: 25.1%, 89.5%) for
232 three vs two doses of BNT162b2, and 96.6% (95% CI: 85.7%, 99.2%) for three vs two doses
233 of CoronaVac among those ≥ 80 years. Additional protection against mortality was offered by
234 a third dose in older adults, with no differences observed in younger adults.

235

236 **DISCUSSION**

237 We used detailed population-level data on the vaccination programme in Hong Kong since
238 February 2021 and individual-level COVID-19 case data from December 31, 2021 to March
239 8, 2022 to estimate VE of one, two and three doses of BNT162b2 and CoronaVac vaccines in
240 a largely infection-naïve population during the fifth wave of COVID-19 in Hong Kong. Two
241 or three doses of BNT162b2 or three doses of CoronaVac provide a very high level of
242 protection against severe disease and death in those under 80 years of age. A reduction in VE
243 was observed among two-dose CoronaVac recipients ≥ 80 years. We found no effect of two
244 doses of CoronaVac and a limited effect of BNT162b2 against mild/moderate disease, with

245 the caveat that many individuals had received their second dose several months before
246 exposure to the SARS-CoV-2 virus. Limited protection against mild/moderate disease was
247 restored with third doses for both vaccines, but we were only able to estimate VE for the
248 short period since administration of third vaccine doses, and it is unclear how long this
249 protection will last.

250

251 Although improved effectiveness of a third dose was observed against severe outcomes in
252 younger age groups, the absolute VE of two doses remains high in this age group for both
253 vaccines and the relative effects should be interpreted accordingly.²⁹ Our finding that three
254 doses of CoronaVac are needed for older adults to achieve high levels of protection is
255 consistent with World Health Organization recommendations for this group.³⁰ While there is
256 a preferential recommendation in Hong Kong for a third dose of BNT162b2 in adults who
257 received two doses of CoronaVac,³¹ this did not translate to preference in the community. Of
258 all adults who had received two doses of CoronaVac and a third dose, only 26% received the
259 third dose with BNT162b2. We were unable to evaluate the comparative effectiveness of
260 heterologous vs homologous third dose schedules or durability of three dose protection in this
261 study, but evidence from our analyses that three doses of inactivated vaccine provides a high
262 level of protection against the severe spectrum of COVID-19 disease, at least in the short
263 term, is reassuring.

264

265 Almost all sequenced SARS-CoV-2 isolates during Hong Kong's fifth wave are of the
266 Omicron BA.2 lineage. Our overall findings are largely consistent with existing VE evidence
267 against this subvariant.³²⁻³⁴ A study from Qatar estimated that third dose VE for BNT162b2
268 was 43.7% (95% CI: 36.5, 50.0%) in the first month and begins to decline again in the
269 following weeks, with substantially improved protection against severe outcomes (six-week

270 VE: 90.9%, 95% CI: 78.6%, 96.1%).³⁵ Similarly, a US study estimated VE of two doses of
271 mRNA vaccines against severe Omicron disease, defined as COVID-19 requiring invasive
272 mechanical ventilation or in-hospital death, of 79% (95% CI: 66%, 87%) a median of 265
273 days after the second dose; and three dose VE of 94% (95% CI: 88%, 97%), similar to our
274 estimate of 98.1% (95% CI: 97.1%, 98.8%).³⁶

275

276 Despite the overall consistency between our results and those presented in other studies, it is
277 possible that VE, particularly against severe outcomes, has been overestimated in our study.

278 Vaccine hesitancy in Hong Kong is highest among the elderly and in individuals with
279 underlying health conditions.³⁷ In this scenario so-called ‘healthy vaccinee bias’, by which
280 vaccine recipients are healthier than their unvaccinated peers, may inflate the estimates.³⁸

281 Although we have accounted for age in the current estimates, a lack of individual-level data
282 on controls mean that this cannot be formally assessed with currently available data.

283 However, our estimates for BNT162b2 and CoronaVac are similar to other studies using
284 alternative designs, and we anticipate the magnitude of overestimation is unlikely to be
285 substantial.^{19,35} Even if individual-level adjustments had been possible, estimating absolute

286 VE after vaccines have been available for some time is problematic because it is necessary to
287 compare incidence rates in vaccinated individuals with those from unvaccinated cohorts often

288 with few remaining persons. This is the case in younger age groups in Hong Kong, whose
289 characteristics are likely to differ substantially from those who chose to be vaccinated earlier.

290 This bias, inherent to observational studies, is present in much of the existing VE literature at
291 this stage of the pandemic. To address this concern, we also estimated a relative VE of three

292 versus two doses of each vaccine type, as these cohorts are likely to be more comparable
293 (Table 3). We find a third dose of either vaccine provides additional protection, reiterating the

294 public health value of a third dose for minimizing severe disease and death but also for

295 reducing health system congestion, public concern and indirect costs stemming from milder
296 episodes during a COVID-19 epidemic.

297

298 We compared performance of the mRNA BNT162b2 and inactivated CoronaVac vaccines
299 and found higher VE for BNT162b2 following one and two doses, but similar performance
300 after three doses (Table 2). Our estimates are likely to be affected by time since vaccination,
301 where typically more time has passed since administration of second than third doses which
302 have only been widely available in Hong Kong since the beginning of January 2022 (Table
303 1). Improved effectiveness may partially reflect a recent, rather than a third, vaccine dose.
304 This hypothesis is supported by data from an observational study in Malaysia which
305 compared the duration of protection of the BNT162b2 and CoronaVac vaccines. They find
306 more rapid waning of CoronaVac, in particular for mild/moderate and severe outcomes, but
307 to a lesser extent for COVID-19 related mortality.²⁴ Moreover, a recent study of humoral and
308 cellular responses among Hong Kong vaccinees over time found that neutralising antibodies
309 against variants of concern dropped to detection limit only three months after vaccinations,
310 along with diminishing memory T cell responses, primarily among CoronaVac recipients.³⁹

311

312 Our study has a number of limitations arising from available data and the nature of the
313 epidemic within Hong Kong. Firstly, we used census data from the correct time period to
314 construct the source population, but any differential population movement by vaccine status
315 over the duration of the vaccination program could affect the validity of our estimates.
316 Furthermore, as we are estimating vaccine effectiveness in real-time, there are large amounts
317 of missingness in clinical data, which is especially problematic when assuming a population
318 level denominator, as the assumed number of people still at risk will be overestimated.
319 However, this is mostly an issue for mild/moderate outcomes, as we used complete records

320 on COVID-19 mortality to derive estimates and we expect severe cases are fully documented.
321 Secondly, there are some differences in testing requirements by vaccine status, particularly
322 for those required to regularly test because of occupation. However, we expect that VE
323 estimates against severe outcomes will be only marginally susceptible to biases related to
324 testing requirements. Finally, in Hong Kong there was a clear preference for the BNT162b2
325 vaccine in younger age groups and for CoronaVac in older adults. We have addressed this
326 confounding in estimates presented by stratifying by age categories and adjusting estimates
327 by 10-year age categories and calendar day, however some residual confounding by age is
328 possible in the vaccine platform-specific estimates and other factors may confound the
329 relationship between vaccine status, type and risk of infection that cannot be accounted for in
330 this design.

331

332 Our findings indicate that two dose schedules of both BNT162b2 and CoronaVac vaccines
333 offer strong protection against severe disease and death, however higher levels of protection
334 were observed among those who received two doses of BNT162b2 compared to those
335 receiving two doses of CoronaVac, particularly in older age groups. Three recent doses of
336 both vaccines offer very high levels of protection for older adults against severe outcomes,
337 with no differences observed across vaccine types. It will be important to increase uptake of
338 third vaccine doses, particularly in older adults who have so far received two doses of
339 CoronaVac. Further investigation of the durability of protection provided by both vaccines is
340 warranted and planned.

341

342

343 **ACKNOWLEDGMENTS**

344 The authors thank the Hong Kong Special Administrative Region Government and Hospital
345 Authority for the timely sharing of COVID-19 vaccination and case data. The authors thank
346 Julie Au for administrative support.

347

348 **FINANCIAL SUPPORT**

349 This project was supported by the China CDC-sponsored COVID-19 Vaccines Evaluation
350 Program (COVEP). BJC is supported by the Theme-based Research Scheme (project no.
351 T11-712/19-N) from the Research Grants Council from the University Grants Committee of
352 Hong Kong, and an RGC Senior Research Fellowship (grant number: HKU SRFS2021-
353 7S03).

354

355 **POTENTIAL CONFLICTS OF INTEREST:**

356 BJC reports honoraria from AstraZeneca, Fosun Pharma, GlaxoSmithKline, Moderna, Pfizer,
357 Roche and Sanofi Pasteur. JN was previously employed by and owns shares in Sanofi. The
358 authors report no other potential conflicts of interest.

359

360

361 **REFERENCES**

- 362 1. Cowling B, Ali S, Ng T, et al. Impact assessment of non-pharmaceutical interventions
363 against coronavirus disease 2019 and influenza in Hong Kong: an observational study.
364 *Lancet Public Health*. 2020;5(5):E297-E288.
- 365 2. The HK SAR Government. COVID-19 vaccination dashboard. Published 2022.
366 Accessed March 17, 2022. <https://www.covidvaccine.gov.hk/en/dashboard>
- 367 3. HK SAR Government. Latest situation of COVID-19 (as of 16 March 2022). Published
368 2022. Accessed March 17, 2021.
369 https://www.chp.gov.hk/files/pdf/local_situation_covid19_en.pdf
- 370 4. The HK SAR Government. Third dose COVID-19 vaccination arrangements for persons
371 under certain groups. Published online November 3, 2022. Accessed March 17, 2022.
372 <https://www.info.gov.hk/gia/general/202111/03/P2021110300536.htm>
- 373 5. The HK SAR Government. Further expansion of COVID-19 vaccination arrangements
374 from January 1. Published online December 24, 2021. Accessed March 17, 2022.
375 <https://www.info.gov.hk/gia/general/202112/24/P2021122400509.htm>
- 376 6. Tsang J. Coronavirus: vaccine outreach teams to visit ‘all Hong Kong care facilities by
377 Friday’, at home jabs to be offered to residents with mobility issues. *South China*
378 *Morning Post*. March 13, 2022.
- 379 7. news.gov.hk. Jab time interval to be shortened. news.gov.uk. Published 2022. Accessed
380 March 18, 2022.
381 https://www.news.gov.hk/eng/2022/03/20220304/20220304_174704_235.html

- 382 8. Lopez Bernal J, Andrews N, Gower C, et al. Effectiveness of the Pfizer-BioNTech and
383 Oxford-AstraZeneca vaccines on covid-19 related symptoms, hospital admissions, and
384 mortality in older adults in England: test negative case-control study. *BMJ*.
385 2021;373:n1088-n1088. doi:10.1136/bmj.n1088
- 386 9. Hall VJ, Foulkes S, Saei A, et al. COVID-19 vaccine coverage in health-care workers in
387 England and effectiveness of BNT162b2 mRNA vaccine against infection (SIREN): a
388 prospective, multicentre, cohort study. *Lancet Lond Engl*. 2021;397(10286):1725-1735.
389 doi:10.1016/S0140-6736(21)00790-X
- 390 10. Thompson M, Burgess J, Naleway A, et al. Interim Estimates of Vaccine Effectiveness
391 of BNT162b2 and mRNA-1273 COVID-19 Vaccines in Preventing SARS-CoV-2
392 Infection Among Health Care Personnel, First Responders, an Other Essential and
393 Frontline Workers - Eight U.S. Locations, December 2020-March 2. *MMWR Morb*
394 *Mortal Wkly Rep*. 2021;70:495-500.
- 395 11. Dagan N, Barda N, Kepten E, et al. BNT162b2 mRNA Covid-19 Vaccine in a
396 Nationwide Mass Vaccination Setting. *N Engl J Med*. 2021;384(15):1412-1423.
397 doi:10.1056/NEJMoa2101765
- 398 12. Lopez Bernal J, Andrews N, Gower C, et al. Effectiveness of Covid-19 Vaccines against
399 the B.1.617.2 (Delta) Variant. *N Engl J Med*. 2021;385(7):585-594.
400 doi:10.1056/NEJMoa2108891
- 401 13. Pouwels K, Pritchard E, Matthews PC, et al. Effect of Delta variant on viral burden and
402 vaccine effectiveness against new SARS-CoV-2 infections in the UK. *Nat Med*.
403 2021;27:2127-2135. doi:<https://doi.org/10.1038/s41591-021-01548-7>

- 404 14. Polack FP, Thomas SJ, Kitchin N, et al. Safety and Efficacy of the BNT162b2 mRNA
405 Covid-19 Vaccine. *N Engl J Med*. 2020;383(27):2603-2615.
406 doi:10.1056/NEJMoa2034577
- 407 15. Higdon MM, Wahl B, Jones CB, et al. A systematic review of COVID-19 vaccine
408 efficacy and effectiveness against SARS-CoV-2 infection and disease. *medRxiv*.
409 Published online January 1, 2022:2021.09.17.21263549.
410 doi:10.1101/2021.09.17.21263549
- 411 16. Goldberg Y, Mandel M, Bar-On YM, et al. Waning Immunity after the BNT162b2
412 Vaccine in Israel. *N Engl J Med*. 2021;385(24):e85-e85. doi:10.1056/NEJMoa2114228
- 413 17. Israel A, Merzon E, Schäffer AA, et al. Elapsed time since BNT162b2 vaccine and risk
414 of SARS-CoV-2 infection: test negative design study. *BMJ*. 2021;375:e067873.
415 doi:10.1136/bmj-2021-067873
- 416 18. Andrews N, Tessier E, Stowe J, et al. Duration of Protection against Mild and Severe
417 Disease by Covid-19 Vaccines. *N Engl J Med*. 2022;386(4):340-350.
418 doi:10.1056/NEJMoa2115481
- 419 19. Andrews N, Stowe J, Kirsebom F, et al. Covid-19 Vaccine Effectiveness against the
420 Omicron (B.1.1.529) Variant. *N Engl J Med*. Published online March 2, 2022.
421 doi:10.1056/NEJMoa2119451
- 422 20. Collie S, Champion J, Moultrie H, Bekker LG, Gray G. Effectiveness of BNT162b2
423 Vaccine against Omicron Variant in South Africa. *N Engl J Med*. 2022;386(5):494-496.
424 doi:10.1056/NEJMc2119270

- 425 21. Buchan SA, Chung H, Brown KA, et al. Effectiveness of COVID-19 vaccines against
426 Omicron or Delta symptomatic infection and severe outcomes. *medRxiv*. Published
427 online 2022:2021.12.30.21268565. doi:10.1101/2021.12.30.21268565
- 428 22. UKHSA. *COVID-19 Vaccine Surveillance Report*.; 2022:12-13. Accessed March 18,
429 2022.
430 [https://assets.publishing.service.gov.uk/government/uploads/system/uploads/attachment](https://assets.publishing.service.gov.uk/government/uploads/system/uploads/attachment_data/file/1057599/Vaccine_surveillance_report_-_week-8.pdf)
431 [_data/file/1057599/Vaccine_surveillance_report_-_week-8.pdf](https://assets.publishing.service.gov.uk/government/uploads/system/uploads/attachment_data/file/1057599/Vaccine_surveillance_report_-_week-8.pdf)
- 432 23. Cerqueira-Silva T, Katikireddi SV, de Araujo Oliveira V, et al. Vaccine effectiveness of
433 heterologous CoronaVac plus BNT162b2 in Brazil. *Nat Med*. Published online February
434 9, 2022. doi:10.1038/s41591-022-01701-w
- 435 24. Suah JL, Husin M, Keng Tok PS, et al. Waning COVID-19 Vaccine Effectiveness for
436 BNT162b2 and CoronaVac in Malaysia: An Observational Study. *medRxiv*. Published
437 online January 1, 2022:2022.01.15.22269326. doi:10.1101/2022.01.15.22269326
- 438 25. Suryatma A, Anasi R, Hananto M, et al. Effectiveness of the Inactivated COVID-19
439 Vaccine (CoronaVac) in Adult Population in Bali, Indonesia. *medRxiv*. Published online
440 2022:2022.02.02.22270351. doi:10.1101/2022.02.02.22270351
- 441 26. Jara A, Undurraga EA, González C, et al. Effectiveness of an Inactivated SARS-CoV-2
442 Vaccine in Chile. *N Engl J Med*. 2021;385(10):875-884. doi:10.1056/NEJMoa2107715
- 443 27. Haas EJ, Angulo FJ, McLaughlin JM, et al. Impact and effectiveness of mRNA
444 BNT162b2 vaccine against SARS-CoV-2 infections and COVID-19 cases,
445 hospitalisations, and deaths following a nationwide vaccination campaign in Israel: an
446 observational study using national surveillance data. *The Lancet*.
447 2021;397(10287):1819-1829. doi:10.1016/S0140-6736(21)00947-8

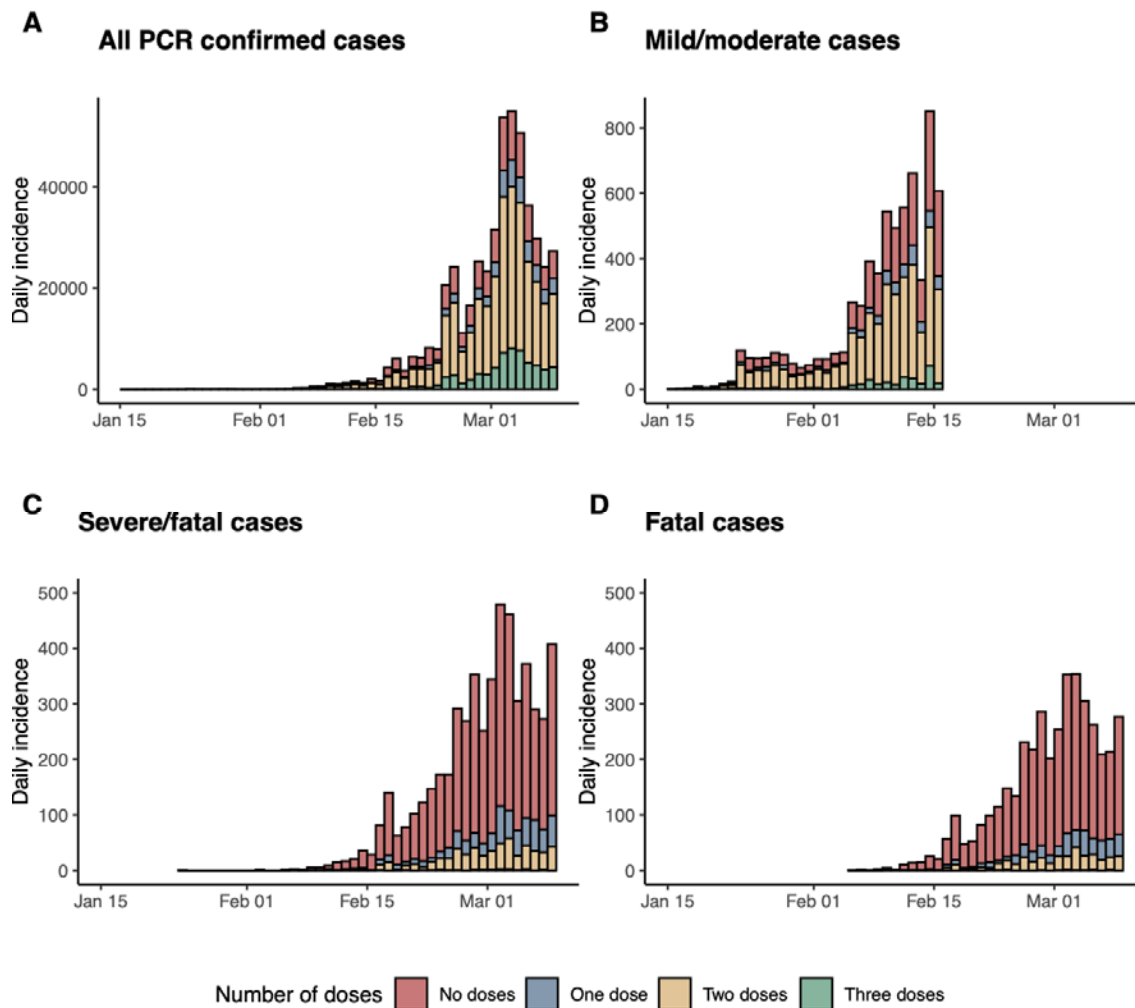
- 448 28. Kong X, Yang Y, Gao J, et al. Overview of the health care system in Hong Kong and its
449 referential significance to mainland China. *J Chin Med Assoc.* 2015;78(10):569-573.
450 doi:<https://doi.org/10.1016/j.jcma.2015.02.006>
- 451 29. McMenamin ME, Bond HS, Sullivan SG, Cowling BJ. Estimation of Relative Vaccine
452 Effectiveness in Influenza: A Systematic Review of Methodology. *Epidemiology.*
453 Published online 2022.
454 [https://journals.lww.com/epidem/Fulltext/9000/Estimation_of_Relative_Vaccine_Effect](https://journals.lww.com/epidem/Fulltext/9000/Estimation_of_Relative_Vaccine_Effectiveness_in.98179.aspx)
455 [iveness_in.98179.aspx](https://journals.lww.com/epidem/Fulltext/9000/Estimation_of_Relative_Vaccine_Effectiveness_in.98179.aspx)
- 456 30. World Health Organisation. The Sinovac-CoronaVac COVID-19 vaccine: What you
457 need to know. who.int. Published September 2, 2021. Accessed March 21, 2022.
458 [https://www.who.int/news-room/feature-stories/detail/the-sinovac-covid-19-vaccine-](https://www.who.int/news-room/feature-stories/detail/the-sinovac-covid-19-vaccine-what-you-need-to-know)
459 [what-you-need-to-know](https://www.who.int/news-room/feature-stories/detail/the-sinovac-covid-19-vaccine-what-you-need-to-know)
- 460 31. Scientific Committee on Emerging and Zoonotic Diseases and Scientific Committee on
461 the Use of COVID-19 Vaccines in Hong Kong. *Consensus Interim Recommendations*
462 *on the Use of COVID-19 Vaccines in Hong Kong.* Centre for Health Protection; 2022.
463 Accessed March 21, 2022.
464 [https://www.chp.gov.hk/files/pdf/consensus_interim_recommendations_on_the_use_of_](https://www.chp.gov.hk/files/pdf/consensus_interim_recommendations_on_the_use_of_covid19_vaccines_in_hong_kong_25feb.pdf)
465 [covid19_vaccines_in_hong_kong_25feb.pdf](https://www.chp.gov.hk/files/pdf/consensus_interim_recommendations_on_the_use_of_covid19_vaccines_in_hong_kong_25feb.pdf)
- 466 32. Kok KH, Wong SC, Chan WM, et al. Co-circulation of two SARS-CoV-2 variant strains
467 within imported pet hamsters in Hong Kong. *Emerg Microbes Infect.* 2022;11(1):689-
468 698. doi:10.1080/22221751.2022.2040922

- 469 33. Cheng VCC, Ip JD, Chu AWH, et al. Rapid spread of SARS-CoV-2 Omicron subvariant
470 BA.2 in a single-source community outbreak. *Clin Infect Dis*. Published online March
471 10, 2022:ciac203. doi:10.1093/cid/ciac203
- 472 34. UKHSA. *COVID-19 Vaccine Surveillance Report*. UKHSA; 2022:13. Accessed March
473 20, 2022.
474 [https://assets.publishing.service.gov.uk/government/uploads/system/uploads/attachment](https://assets.publishing.service.gov.uk/government/uploads/system/uploads/attachment_data/file/1061532/Vaccine_surveillance_report_-_week_11.pdf)
475 [_data/file/1061532/Vaccine_surveillance_report_-_week_11.pdf](https://assets.publishing.service.gov.uk/government/uploads/system/uploads/attachment_data/file/1061532/Vaccine_surveillance_report_-_week_11.pdf)
- 476 35. Chemaitelly H, Ayoub HH, AlMukdad S, et al. Duration of mRNA vaccine protection
477 against SARS-CoV-2 Omicron BA.1 and BA.2 subvariants in Qatar. *medRxiv*.
478 Published online January 1, 2022:2022.03.13.22272308.
479 doi:10.1101/2022.03.13.22272308
- 480 36. Tenforde M, Self W, Gaglani M, et al. Effectiveness of mRNA Vaccination in
481 Preventing COVID-19-Associated Invasive Mechanical Ventilation and Death - United
482 States, March 2021-January 2022. *MMWR Morb Mortal Wkly Rep*. 2022; ePub: 18
483 March 2022. doi:<http://dx.doi.org/10.15585/mmwr.mm7112e1>
- 484 37. Xiao J, Cheung J, Wu P, Ni M, Cowling B, Liao Q. Temporal changes in factors
485 associated with COVID-19 vaccine hesitancy and uptake among adults in Hong Kong:
486 Serial cross-sectional surveys. *Lancet Reg Health - West Pac*. 2022;(In press).
- 487 38. Renschmidt C, Wichmann O, Harder T. Frequency and impact of confounding by
488 indication and healthy vaccinee bias in observational studies assessing influenza vaccine
489 effectiveness: a systematic review. *BMC Infect Dis*. 2015;15(1):429.
490 doi:10.1186/s12879-015-1154-y

491 39. Peng Q, Zhou R, Wang Y, et al. Waning immune responses against SARS-CoV-2
492 variants of concern among vaccinees in Hong Kong. *eBioMedicine*. 2022;77.
493 doi:10.1016/j.ebiom.2022.103904

494

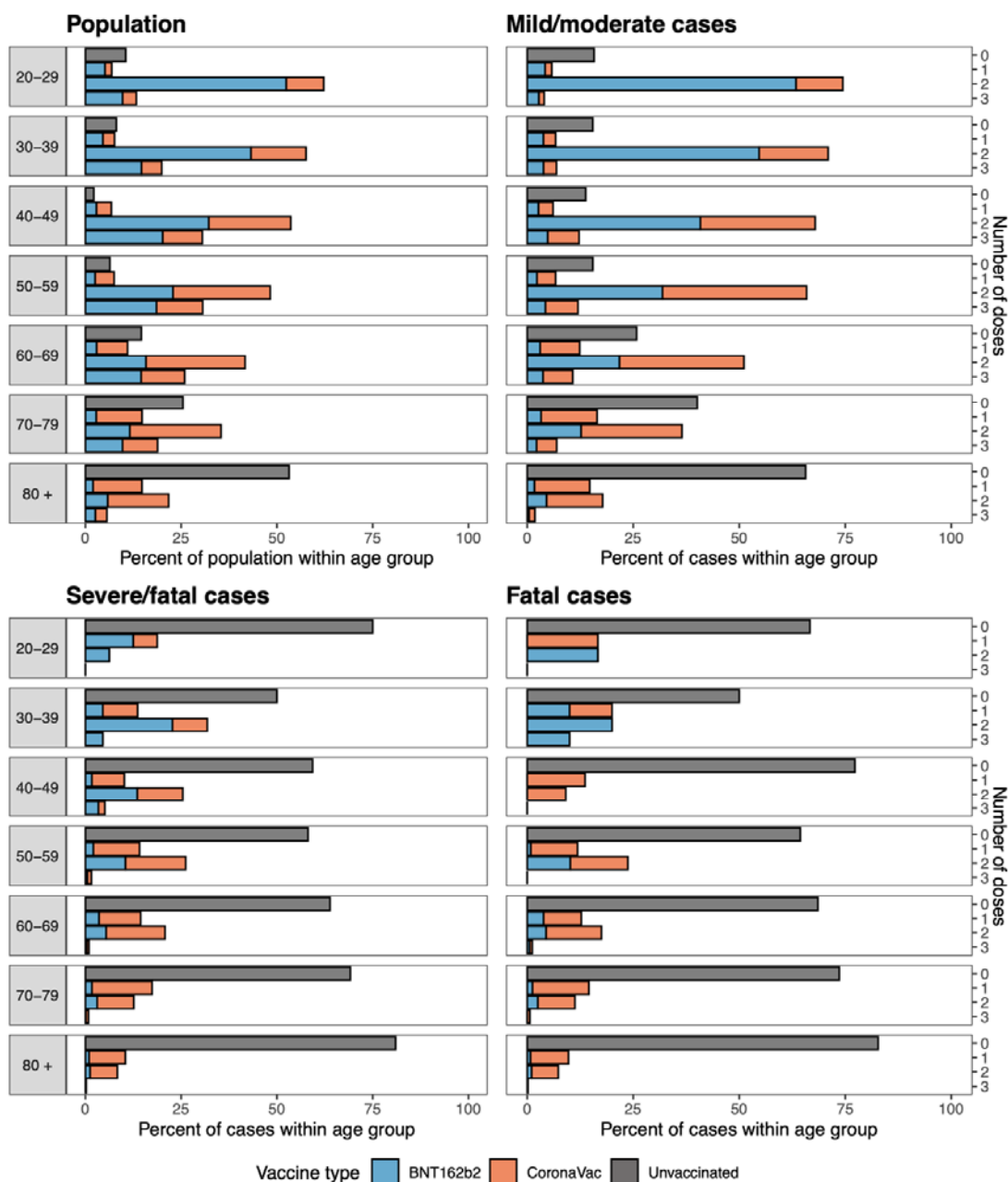
495



496

497 Figure 1. Daily incidence of (A) all PCR confirmed COVID-19 cases (B) mild/moderate
498 cases in the early part of the fifth wave prior to 15 February 2022, (C) severe/fatal cases, and
499 (D) deaths throughout the fifth wave in Hong Kong by vaccination status, where severe
500 disease is defined as having ever been listed as ‘Serious’ or ‘Critical’ or ‘Fatal’ by the
501 Hospital Authority during hospitalisation for COVID-19. Vaccination status was categorised
502 according to the number of doses received plus a 14-day lag for all doses, to allow for the
503 immune response to vaccination. The drop in mild/moderate cases on 4 March was due to a
504 very small number of cases being reported as having been admitted to hospital or isolation
505 facilities on that day. Mild cases were only included up until 15 February 2022 to account for
506 change in admission criteria.

507



508

509 Figure 2. Vaccine status of population and those experiencing mild/moderate
 510 and fatal COVID-19 as at 8 March 2022 as a percent of the population within a given age
 511 group shown by vaccine type and number of doses.

512

513

514

515

516 Table 1. Descriptive characteristics of confirmed COVID-19 cases in Hong Kong classified
517 as having mild, severe or fatal disease between 31 December 2021 and 8 March 2022.

	Mild/moderate disease (N= 5474)	Severe/fatal disease (N=5294)	Fatal disease (N=4093)
Age			
20-49 years	3144	101	39
50-69 years	1602	784	488
≥70 years	728	4408	3566
Sex			
Male	2337	3245	2528
Female	3137	2049	1565
Vaccination status^a			
No doses	1300	4064	3277
One dose			
<i>BNT162b2</i>	151	73	44
<i>CoronaVac</i>	226	532	374
Two doses			
<i>BNT162b2</i>	2139	130	74
<i>CoronaVac</i>	1271	434	287
Three doses			
<i>BNT162b2</i>	126	12	7
<i>CoronaVac</i>	210	14	7
Median (25th, 75th percentile) of days between last vaccine dose and positive SARS-CoV-2 test result^b			
One dose			
<i>BNT162b2</i>	27 (22, 35)	21 (18, 32)	21 (18, 32)
<i>CoronaVac</i>	29 (21, 35)	24 (17, 38)	24 (17, 39)
Two doses			
<i>BNT162b2</i>	182 (151, 217)	161 (73, 207)	171 (91, 213)
<i>CoronaVac</i>	179 (146, 209)	127 (51, 162)	125 (51, 157)
Three doses			
<i>BNT162b2</i>	31 (20, 49)	52 (38, 70)	68 (49, 77)
<i>CoronaVac</i>	39 (25, 66)	45 (24, 100)	64 (30, 100)

518 ^aNumber of doses plus 14-day lag

519 ^bMedian time since vaccination among those where 14 days has passed since latest dose

520

521

522 Table 2. Vaccine effectiveness by dose (one, two, three) and vaccine type (CoronaVac,
 523 BNT162b2) in all ages and within age categories (mild/moderate: 20-59, ≥60; severe/fatal,
 524 fatal: 20-59, 60-69, 70-79, ≥80 years) against COVID-19 related mild/moderate disease,
 525 severe/fatal disease and death.

	One dose		Two doses		Three doses	
	BNT162b2	CoronaVac	BNT162b2	CoronaVac	BNT162b2	CoronaVac
Mild/moderate disease						
20-59 years	37.4 (0.7, 60.6)	2.1 (-53.3, 37.5)	31.0 (1.6, 51.7)	17.9 (-18.0, 42.9)	71.5 (54.5, 82.1)	42.3 (11.4, 62.4)
≥60 years	None ^a	None ^a	None ^a	None ^a	71.6 (43.5, 85.7)	50.7 (12.9, 72.1)
Severe/fatal disease						
20-59 years	85.0 (69.1, 92.7)	60.9 (40.6, 74.3)	95.2 (92.9, 96.8)	91.7 (87.8, 94.4)	98.5 (95.9, 99.4)	98.5 (95.2, 99.5)
60-69 years	59.9 (29.3, 77.3)	55.1 (30.9, 70.9)	91.1 (85.4, 94.6)	82.6 (74.2, 88.2)	99.2 (96.7, 99.8)	98.5 (95.3, 99.6)
70-79 years	71.5 (48.9, 84.1)	33.9 (8.1, 52.5)	89.4 (83.0, 93.3)	80.8 (72.8, 86.5)	99.5 (96.0, 99.9)	96.7 (92.3, 98.6)
≥80 years	65.0 (42.2, 78.8)	35.0 (8.8, 53.7)	84.5 (75.5, 90.2)	60.2 (43.9, 71.8)	95.7 (89.0, 98.3)	98.6 (94.3, 99.7)
Mortality						
20-59 years	93.7 (74.2, 98.5)	65.4 (38.6, 79.4)	96.4 (93.6, 98.0)	94.0 (89.6, 96.5)	99.4 (95.6, 99.9)	- ^b -
60-69 years	63.3 (30.7, 80.5)	70.2 (51.3, 81.7)	93.7 (88.6, 96.5)	87.6 (80.9, 91.9)	98.9 (95.3, 99.7)	98.7 (94.4, 99.7)
70-79 years	81.3 (60.6, 91.1)	48.9 (28.1, 63.7)	92.2 (86.5, 95.5)	84.4 (77.5, 89.2)	- ^b -	97.2 (92.3, 99.0)
≥80 years	71.8 (50.6, 83.9)	40.5 (14.9, 58.4)	88.2 (80.2, 93.0)	66.8 (51.9, 77.0)	96.0 (88.8, 98.6)	99.2 (94.3, 99.9)

526

527 ^a No evidence of protection based on a negative or very small positive point estimate and wide confidence
528 intervals.

529 ^b Insufficient outcomes to estimate

530

531

532

533 Table 3. Relative vaccine effectiveness of a three versus two dose BNT162b2 schedule and a
 534 three versus two dose CoronaVac schedule against mild disease, severe disease and mortality
 535 as defined by the Hospital Authority.

	Relative VE of three doses vs two doses of same vaccine technology (%)	
	CoronaVac	BNT162b2
Mild/moderate disease		
20-59 years	29.7 (-7.7, 54.1)	58.6 (34.4, 73.9)
≥60 years	57.0 (23.4, 75.9)	63.8 (26.7, 82.1)
Severe/fatal disease		
20-59 years	81.8 (40.6, 94.4)	68.3 (9.8, 88.9)
60-69 years	91.7 (72.5, 97.5)	91.1 (61.2, 98.0)
70-79 years	83.0 (58.8, 93.0)	94.9 (61.4, 99.3)
≥80 years	96.6 (85.7, 99.2)	71.9 (25.1, 89.5)
Mortality		
20-59 years	- ^a	83.1 (-28.6, 97.8)
60-69 years	89.2 (53.9, 97.4)	82.2 (20.0, 96.0)
70-79 years	82.4 (49.4, 93.8)	- ^a
≥80 years	97.7 (82.8, 99.7)	66.2 (-1.3, 88.7)

536
 537 ^a Insufficient outcomes to estimate

538