

1 **Vaccine effectiveness of two and three doses of BNT162b2 and CoronaVac against**  
2 **COVID-19 in Hong Kong**

3

4 Martina E. McMenamin<sup>1</sup>, Joshua Nealon<sup>1</sup>, Yun Lin<sup>1</sup>, Jessica Y. Wong<sup>1</sup>, Justin K. Cheung<sup>1</sup>,  
5 Eric H. Y. Lau<sup>1,2</sup>, Peng Wu<sup>1,2</sup>, Gabriel M. Leung<sup>1,2</sup>, Benjamin J. Cowling<sup>1,2</sup>

6

7 **Affiliations:**

8 1. World Health Organization Collaborating Centre for Infectious Disease Epidemiology and  
9 Control, School of Public Health, Li Ka Shing Faculty of Medicine, The University of Hong  
10 Kong, Hong Kong Special Administrative Region, China

11 2. Laboratory of Data Discovery for Health, Hong Kong Science and Technology Park, Hong  
12 Kong Special Administrative Region, China

13

14 **Corresponding authors:**

15 Joshua Nealon ([jnealon@hku.hk](mailto:jnealon@hku.hk)) and Ben Cowling ([bcowling@hku.hk](mailto:bcowling@hku.hk))

16

17 Running head: COVID-19 vaccine effectiveness in Hong Kong

18 Word count (abstract): 249

19 Word count (main text): 3,489

20

21 **Abstract**

22 **Background:** Hong Kong maintained extremely low circulation of SARS-CoV-2 until a  
23 major community epidemic of Omicron BA.2 starting in January 2022. Both mRNA  
24 BNT162b2 (BioNTech/Fosun Pharma) and inactivated CoronaVac (Sinovac) vaccines are  
25 widely available, however coverage has remained low in older adults. Vaccine effectiveness in  
26 this predominantly infection-naïve population is unknown.

27 **Methods:** We used individual-level case data on mild/moderate, severe/fatal and fatal  
28 hospitalized COVID-19 from December 31, 2021 to March 8, 2022, along with census  
29 information and coverage data of BNT162b2 and CoronaVac. We used a negative binomial  
30 model, adjusting for age and calendar day to estimate vaccine effectiveness of one, two and  
31 three dose schedules of both vaccines, and relative effectiveness by number of doses and  
32 vaccine type.

33 **Findings:** A total of 12.7 million vaccine doses were administered in Hong Kong's 7.3  
34 million population, and we analyzed data from confirmed cases with mild/moderate  
35 (N=5,474), severe/fatal (N=5,294) and fatal (N=4,093) COVID-19. Two doses of either  
36 vaccine protected against severe disease and death, with higher effectiveness among adults  
37  $\geq 60$  years with BNT162b2 (VE: 88.2%, 95% confidence interval, CI: 84.4%, 91.1%)  
38 compared to CoronaVac (VE: 74.1%, 95% CI: 67.8%, 79.2%). Three doses of either vaccine  
39 offered very high levels of protection against severe outcomes (VE: 98.1%, 95% CI: 97.1%,  
40 98.8%).

41 **Interpretation:** Third doses of either BNT162b2 or CoronaVac provide substantial  
42 additional protection against severe COVID-19 and should be prioritized, particularly in older  
43 adults who received CoronaVac primary schedules. Longer follow-up is needed to assess  
44 persistence of different vaccine platforms and schedules.

45 **Funding:** COVID-19 Vaccines Evaluation Program, Chinese Center for Disease Control and  
46 Prevention

47 **INTRODUCTION**

48 Hong Kong Special Administrative Region of China (Hong Kong; population 7.3 million) has  
49 pursued a COVID-19 elimination strategy since January 2020 involving stringent social  
50 distancing measures, border entry restrictions, isolation of cases and quarantine of close  
51 contacts, and the use of personal protective measures.<sup>1</sup> Consequently, the disease had been  
52 largely controlled through December 2021 with four previous epidemic waves resulting in a  
53 total of 12,606 cases (<2 per 1,000) and 207 deaths (<3 per 100,000). Since February 2021,  
54 both inactivated (Sinovac; CoronaVac) and mRNA (BioNTech/Fosun Pharma; BNT162b2)  
55 vaccines have been widely available with residents offered the choice of either. However, by  
56 January 2022, two-dose vaccine coverage had only reached 46% in older adults 70-79 years of  
57 age and 18% in those aged  $\geq 80$  years.<sup>2</sup>

58  
59 A major community epidemic of COVID-19 Omicron variant (B.1.1.529) lineage BA.2 began  
60 in early January 2022, resulting in 649,454 laboratory confirmed cases, 313,127 cases reported  
61 by rapid antigen tests and nearly 5,000 deaths to March 17, 2022.<sup>2,3</sup> Vaccination coverage has  
62 since risen steadily but remains low in the most vulnerable, with two-dose coverage at 66% and  
63 37% in 70-79 and  $\geq 80$  year olds respectively as of March 17, 2022. Third doses of vaccination  
64 were recommended first for priority groups and then for the general public on 1 January 2022,  
65 to be given six months after the second dose.<sup>4,5</sup> Third-dose uptake has been highest in the 40-  
66 59y age group (46% as of March 17, 2022) and lower in older adults (30% in 70-79 year olds;  
67 10% in those  $\geq 80$ ). Efforts to increase vaccine uptake in older and high-risk groups are  
68 underway, including reducing the duration between first and second doses for care home  
69 residents, extending vaccination clinic operating hours and deployment of vaccine outreach  
70 teams to care homes, housing estates and to residents with limited mobility.<sup>6,7</sup>

71

72 International data has shown vaccination with BNT162b2 reduces the frequency of severe  
73 outcomes, and to a lesser extent, infection for variants circulating prior to Omicron.<sup>8-14</sup> Waning  
74 of protection has been observed in multiple contexts, in particular against infection,<sup>15-17</sup> and  
75 recent studies have provided early indications of reduced effectiveness of BNT162b2 against  
76 the Omicron variant.<sup>18-20</sup> Evidence on vaccine performance against the more transmissible  
77 Omicron subvariant BA.2 remains very limited, as is data on inactivated CoronaVac vaccine  
78 performance.<sup>21</sup> Limited observational evidence suggests strong and durable protection against  
79 severe disease and death, with transient protection against milder symptomatic disease.<sup>22-25</sup>  
80 With a largely infection-naïve population and two COVID-19 vaccines in widespread use,  
81 Hong Kong represents a unique environment for monitoring vaccine effectiveness (VE) against  
82 Omicron BA.2. In this study we estimated VE of one, two and three doses of BNT162b2 and  
83 CoronaVac, their relative effectiveness, and the additional protection offered by third doses  
84 against mild/moderate infections, severe/fatal disease and death.

85

## 86 **METHODS**

### 87 *Study design and population*

88 We assessed vaccine effectiveness of the BNT162b2 and CoronaVac vaccines using an  
89 ecological study design, which has been previously employed to provide estimates of vaccine  
90 effectiveness in Israel.<sup>26</sup> The study population consisted of residents of Hong Kong aged 20  
91 years and over, where the population with zero, one, two or three doses of either vaccine at  
92 risk at a given time was derived using detailed data from the vaccination programme and  
93 population census. Information on all laboratory-confirmed SARS-CoV-2 cases in Hong  
94 Kong from December 31, 2021 to March 8, 2022 was obtained from nationwide individual  
95 level surveillance data provided by the Centre for Health Protection and linked to clinical  
96 outcome data provided by the Hong Kong Hospital Authority.

97

98 ***Ethical approval***

99 This project received approval from the Institutional Review Board of the University of Hong  
100 Kong.

101

102 ***Infections and outcomes***

103 Extensive PCR testing for SARS-CoV-2 is conducted in public hospitals, community test  
104 centres and private laboratories in Hong Kong. Testing is free-of-charge or available at low  
105 cost, and required for those who exhibit COVID-19 like symptoms, or following contact  
106 tracing based on exposure history or residential location. Regular screening is also required of  
107 certain professions, in particular those working with older adults or vulnerable persons.  
108 Positive rapid test results have been recognised as confirmed infections since February 25,  
109 2022 and included in official case counts from March 7, 2022. Data on all confirmed cases  
110 between December 31, 2021 and March 8, 2022 were extracted and cases classified as  
111 ‘imported’, i.e. detected in on-arrival quarantine, were excluded due to their non-  
112 representative SARS-CoV-2 exposure and vaccination histories. Sequencing of a subset of  
113 cases each day indicates that fewer than 1% of cases and deaths during the fifth wave have  
114 occurred with the Delta variant, with the remaining infections attributed to the Omicron BA.2  
115 lineage.

116

117 Hong Kong has an advanced public and private healthcare system whereby private clinics  
118 comprise most primary care and government hospitals provide approximately 90% of hospital  
119 medical services at very low cost to patients.<sup>27</sup> Up until mid-February 2022, all laboratory-  
120 confirmed COVID-19 cases were admitted to hospitals for isolation and standardized clinical  
121 management, regardless of symptom presentation, with their hospitalization records stored in

122 the data system managed by Hospital Authority of Hong Kong. After mid-February 2022,  
123 due to the large number of incident cases, hospitalisation was reserved for patients with more  
124 severe disease, and milder cases were required to isolate at dedicated government quarantine  
125 facilities or at home. In the Hospital Authority data system, records of patients' test results,  
126 medication and condition changes were documented and integrated into a centralized  
127 database from which we extracted relevant information on those experiencing mild/moderate  
128 disease prior to February 16, 2022 and severe disease and death at any time. We excluded  
129 those with conflicting information in the database, i.e. persons with a worst recorded  
130 condition of 'mild' but also experiencing a fatal outcome within hospital. Severe disease was  
131 defined as any severe, critical or fatal COVID-19 case (definitions for each in Appendix).

132

### 133 ***Population uptake of COVID-19 vaccines***

134 Data on the estimated population size at the end of 2021 by age and sex were obtained from the  
135 Census and Statistics Department of the Hong Kong Special Administrative Region  
136 Government. Data on the number of persons vaccinated with either the BNT162b2 or  
137 CoronaVac vaccines in Hong Kong each day since February 22, 2021 are available in a  
138 national vaccination database provided by the Department for Health. Data on all vaccinations  
139 that had occurred up to March 8, 2022, including vaccinee age and the type and date of receipt  
140 of each dose of vaccine, were extracted on March 10, 2022. Vaccination information for all  
141 cases in the surveillance data was cross checked with Hospital Authority records and any cases  
142 with discrepancies were excluded.

143

144 Those who received vaccines other than BNT162b2 or CoronaVac, or who received a mixed  
145 primary series of one dose of BNT162b2 and one dose of CoronaVac, were excluded from the  
146 analysis. In addition, for the purposes of this analysis we also exclude those who switched

147 vaccine platform after the second dose, that is, those who received two doses of CoronaVac and  
148 a third dose of BNT162b2 and those who have received a primary series of BNT162b2 and a  
149 third dose of CoronaVac. Cases with known prior COVID-19 infection were also excluded.

150

### 151 *Statistical analysis*

152 Incidence rates were calculated according to the number of doses of COVID-19 vaccination  
153 received (none, one, two or three) for each age group (20-29, 30-39, 40-49, 50-59, 60-69, 70-  
154 79,  $\geq 80$  years) and calendar day throughout the study period. Additional stratification by  
155 vaccine type was included to estimate VE for each vaccine type and relative VE (rVE)  
156 between two and three doses of each vaccine. Vaccination status was categorised according to  
157 the date of vaccination plus a 14-day lag for all doses, to allow for the delay in immune  
158 response to vaccination. Daily numbers of persons in each vaccination category were inferred  
159 from the uptake data assuming that individuals received the same vaccine for first and second  
160 dose (aligned with Hong Kong guidelines), and using aggregate data by age on vaccine  
161 switching for the third dose. The population at risk in each stratum was matched to the report  
162 date of cases, and cumulative numbers of previous SARS-CoV-2 infections within each  
163 group were removed from the population at risk at each time point. Incidence rate ratios  
164 (IRR) were estimated using a negative binomial rate model for the daily counts of cases  
165 adjusted for age group and calendar day including the logarithm of person-time as an offset  
166 term in the model to account for differing numbers at risk within each strata. VE was defined  
167 as  $(1-IRR) \times 100\%$ .

168

## 169 **RESULTS**

170 A total of 486,074 persons had confirmed SARS-CoV-2 infection during the study period  
171 from December 31, 2021 to March 8, 2022. The case data were linked to the Hospital



172 Authority dataset to determine their clinical outcomes and those with complete age and  
173 vaccination records were extracted. Of these, 5,475 persons were recorded as having  
174 mild/moderate disease between December 31, 2021 and February 15, 2022. During the entire  
175 study period from December 31, 2021 to March 8, 2022, 5,294 persons with severe/fatal  
176 disease and 4,093 with fatal disease were included (Table 1).

177

178 Up to March 8, 2022, a total of 12.7 vaccine doses had been administered in Hong Kong.  
179 Mild/moderate cases occurred a median of 181 (IQR range 149 to 214) days after the second  
180 vaccination in those vaccinated with two doses and 35 (range 24 to 60) days after the third  
181 doses. Those experiencing severe and fatal outcomes after a third dose tested positive a  
182 median of 51 (IQR 25 to 79) and 66 (44 to 93) days after vaccination. The distribution of  
183 mild cases according to age and vaccination status were similar to the population, with severe  
184 disease and death occurring predominantly in the unvaccinated older population (Figure 2).

185

### 186 *VE after receipt of two doses*

187 We found two doses of CoronaVac provided no protection against mild/moderate disease  
188 across all age groups, with some protection offered by BNT162b2 in younger age groups  
189 (VE: 31.0%, 95% CI: 1.6%, 51.7%). However, both vaccines were estimated to have high  
190 effectiveness against severe disease. Limited differences in vaccine effectiveness were  
191 observed for severe outcomes in younger adults, where VE was estimated to be 95.2% (95%  
192 CI: 92.9%, 96.8%) for BNT162b2 and 91.7% (95% CI: 87.8%, 94.4%) for CoronaVac (Table  
193 2). The difference in VE was more pronounced for older adults, with higher effectiveness  
194 among adults >60 years who received BNT162b2 (VE: 88.2%, 95% confidence interval, CI:  
195 84.4%, 91.1%) compared to CoronaVac (VE: 74.1%, 95% CI: 67.8%, 79.2%). When broken  
196 down further by age, we estimated that VE was 91.1% (95% CI: 85.4%, 94.6%) for

197 BNT162b2 and 82.6% (74.2%, 88.2%) for CoronaVac in 60-69 year olds, reducing to 84.5%  
198 (95% CI: 75.5%, 90.2%) and 60.2% (95% CI: 43.9%, 71.8%) among those  $\geq 80$  years for  
199 BNT162b2 and CoronaVac, respectively. This was also observed for the mortality endpoint,  
200 where in adults aged  $\geq 80$  years two doses of BNT162b2 offered a higher level of protection  
201 against fatal disease (88.2%, 95% CI: 80.2%, 93.0%) compared to two doses of CoronaVac  
202 (66.8%, 95% CI: 51.9%, 77.0%).

203

204 We compared the two-dose schedules of both vaccines and found no significant differences  
205 between BNT162b2 and CoronaVac for mild disease in any age group. Superiority of the  
206 two-dose BNT162b2 schedule was estimated for severe/fatal disease in adults  $\geq 60$  years  
207 (relative VE: 54.6%, 95% CI: 38.7%, 66.4%). This was also the case for mortality in those  
208  $\geq 60$  years (relative VE: 58.5%, 95% CI: 70.7%, 41.3%). No differences between vaccines  
209 were found against severe/fatal or fatal COVID-19 in adults  $< 60$  years.

210

211

### 212 ***VE after receipt of three doses***

213 We estimated three doses of both vaccines offered very high protection against severe disease  
214 (98.1%, 95% CI: 97.1%, 98.8%) and mortality (98.6%, 95% CI: 97.7%, 99.2%) which was  
215 sustained within all age groups (Table 3). Vaccine estimates were very similar for both  
216 vaccines against severe and fatal outcomes. Three doses of BNT162b2 was estimated to have  
217 a VE of 71.5% (95% CI: 54.5%, 82.1%) against mild/moderate disease in younger adults  
218 while for three doses of CoronaVac the VE was estimated as 42.3% (95% CI: 11.4%, 62.4%)  
219 against the same outcome.

220

### 221 ***Relative VE of three versus two doses***

222 We estimated the relative effect of three doses versus two doses of each vaccine type. For  
223 mild/moderate disease we find an additional benefit of a third dose of BNT162b2 in younger  
224 (relative VE: 58.6%, 95% CI: 34.4%, 73.9%) and older (relative VE: 63.8%, 95% CI: 26.7%,  
225 82.1%) adults who had previously received two doses of BNT162b2. A third dose of  
226 CoronaVac increased protection (relative VE: 57.0%, 95% CI: 23.4%, 75.9%) in older adults  
227 who had received two doses of CoronaVac, with no benefit observed in the younger age  
228 category. For severe/fatal disease we found an additional benefit of a third dose in adults of  
229 all ages for both vaccine types, with relative VE of 71.9% (95% CI: 25.1%, 89.5%) for three  
230 vs two doses of BNT162b2, and 96.6% (95% CI: 85.7%, 99.2%) for three vs two doses of  
231 CoronaVac among those  $\geq 80$  years. Additional protection against mortality was offered by a  
232 third dose in older adults, with no differences observed in younger adults.

233

## 234 **DISCUSSION**

235 We used detailed population-level data on the vaccination programme in Hong Kong since  
236 February 2021 and individual-level COVID-19 case data from December 31, 2021 to March  
237 8, 2022 to estimate VE of one, two and three doses of BNT162b2 and CoronaVac vaccines in  
238 a largely infection-naïve population during the fifth wave of COVID-19 in Hong Kong. Two  
239 or three doses of BNT162b2 or three doses of CoronaVac provide a very high level of  
240 protection (VE >90%) against severe disease and death. We found no effect of two doses of  
241 CoronaVac and a limited effect of BNT162b2 against mild/moderate disease, with the caveat  
242 that many individuals had received their second dose several months before exposure to the  
243 SARS-CoV-2 virus. Limited protection against mild/moderate disease was restored with third  
244 doses for both vaccines, but we were only able to estimate VE for the short period since Hong  
245 Kong broadly recommended administration of third vaccine doses, and it is unclear how long  
246 this protection will last.

247

248 Although improved effectiveness of a third dose of vaccination was observed against severe  
249 outcomes in younger age groups, absolute VE of two doses of vaccination remains high in  
250 this age group for both vaccines and the relative effects should be interpreted accordingly.<sup>28</sup>  
251 Our finding that three doses of CoronaVac are needed for older adults to achieve high levels  
252 of protection is consistent with World Health Organization recommendations for this group.<sup>28</sup>  
253 While there is a preferential recommendation in Hong Kong for a third dose of BNT162b2 in  
254 adults who received two doses of CoronaVac,<sup>29</sup> this did not translate to preference in the  
255 community. Of all adults who had received two doses of CoronaVac and a third dose, only  
256 26% received the third dose with BNT162b2. We were unable to evaluate the comparative  
257 effectiveness of heterologous vs homologous third dose schedules or durability of three dose  
258 protection in this study, but evidence from our analyses that three doses of inactivated  
259 vaccine provides a high level of protection against the severe spectrum of COVID-19 disease,  
260 at least in the short term, is reassuring.

261

262 Almost all sequenced SARS-CoV-2 isolates during Hong Kong's fifth wave are of the  
263 Omicron BA.2 lineage. Our overall findings are largely consistent with existing VE evidence  
264 against this subvariant.<sup>30,31</sup> The United Kingdom Health Security Agency estimated that two  
265 doses of either ChAdOx1-S, BNT162b2 or mRNA-1273 vaccines offer modest protection  
266 against symptomatic disease (VE: 18%, 95% CI: 5%, 29%) and that third doses provide  
267 substantial additional protection (74%; 95% CI: 69%, 77%) which wanes rapidly within the  
268 first three months.<sup>32</sup> A study from Qatar estimated that third dose VE for BNT162b2 was  
269 43.7% (95% CI: 36.5, 50.0%) in the first month and begins to decline again in the following  
270 weeks, with substantially improved protection against severe outcomes (six-week VE: 90.9%,  
271 95% CI: 78.6%, 96.1%).<sup>33</sup> Similarly, a US study estimated VE of two doses of mRNA

272 vaccines against severe Omicron disease, defined as COVID-19 requiring invasive  
273 mechanical ventilation or in-hospital death, of 79% (95% CI: 66%, 87%) a median of 265  
274 days after the second dose; and three dose VE of 98.1% (95% CI: 97.1%, 98.8%).<sup>34</sup>

275

276 Despite the overall consistency between our results and those presented in other studies, it is  
277 possible that VE, particularly against severe outcomes, has been overestimated in our study.

278 Vaccine hesitancy in Hong Kong is highest among the elderly and in individuals with  
279 underlying health conditions.<sup>36</sup> In this scenario so-called ‘healthy vaccinee bias’, by which  
280 vaccine recipients are healthier than their unvaccinated peers, may inflate the estimates.<sup>35</sup>

281 Although we have accounted for age in the current estimates, a lack of individual-level data  
282 on controls mean that this cannot be formally assessed with currently available data.

283 However, our estimates for BNT162b2 and CoronaVac are similar to other studies using  
284 alternative designs, and we anticipate the magnitude of overestimation is unlikely to be  
285 substantial.<sup>18,33</sup> Employing alternative study designs using unvaccinated cohorts as a

286 comparator group to estimate VE may offer additional problems, as unvaccinated individuals  
287 are a small proportion of some age cohorts, in particular younger age groups in Hong Kong,  
288 and the characteristics of those individuals are likely to differ substantially to those

289 vaccinated. This bias, inherent to observational studies, is present in much of the existing VE  
290 literature at this stage of the pandemic. To address this concern, we also estimated a relative

291 VE of three versus two doses of each vaccine type, as these cohorts are likely to be more  
292 comparable (Table 3). We find a third dose of either vaccine provides additional protection,

293 reiterating the public health value of a third dose for minimizing severe disease and death but  
294 also for reducing health system congestion, public concern and indirect costs stemming from

295 milder episodes during a COVID-19 epidemic.

296

297 We compared performance of the mRNA BNT162b2 and inactivated CoronaVac vaccines  
298 and found higher VE for BNT162b2 following one and two doses, but similar performance  
299 after three doses (Table 2). Our estimates are likely to be affected by time since vaccination,  
300 where typically more time has passed since administration of second than third doses which  
301 have only been widely available in Hong Kong since the beginning of January 2022 (Table  
302 1). Improved effectiveness may partially reflect a recent, rather than a third, vaccine dose.  
303 This hypothesis is supported by data from an observational study in Malaysia which  
304 compared the duration of protection of the BNT162b2 and CoronaVac vaccines. They find  
305 more rapid waning of CoronaVac, in particular for mild/moderate and severe outcomes, but  
306 to a lesser extent for COVID-19 related mortality.<sup>23</sup> Moreover, a recent study of humoral and  
307 cellular responses among Hong Kong vaccinees over time found that neutralising antibodies  
308 against variants of concern dropped to detection limit only three months after vaccinations,  
309 along with diminishing memory T cell responses, primarily among CoronaVac recipients.<sup>36</sup>  
310  
311 Our study has a number of limitations arising from available data and the nature of the  
312 epidemic within Hong Kong. Firstly, we used census data from the correct time period to  
313 construct the source population, and any differential population movement by vaccine status  
314 over the duration of the vaccination program could affect the validity of our estimates. As we  
315 are estimating vaccine effectiveness in real-time, there are large amounts of missingness in  
316 clinical data, which is especially problematic when assuming a population level denominator,  
317 as the assumed number of people still at risk will be overestimated. However, this is mostly  
318 an issue for mild/moderate outcomes, as we used complete records on COVID-19 mortality  
319 to derive estimates and we expect severe cases are fully documented. Secondly, there are  
320 some differences in testing requirements by vaccine status, particularly for those required to  
321 regularly test because of occupation. However, we expect that VE estimates against severe

322 outcomes will be only marginally susceptible to biases related to testing requirements.  
323 Finally, in Hong Kong there was a clear preference for the BNT162b2 vaccine in younger age  
324 groups and for CoronaVac in older adults. We have addressed this confounding in estimates  
325 presented by stratifying by age categories and adjusting estimates by 10-year age categories  
326 and calendar day, however some residual confounding by age is possible in the vaccine  
327 platform-specific estimates and other factors may confound the relationship between vaccine  
328 status, type and risk of infection that cannot be accounted for in this design.

329

330 Our findings indicate that two dose schedules of both BNT162b2 and CoronaVac vaccines  
331 offer strong protection against severe disease and death outcomes, however higher levels of  
332 protection were observed among those who received two doses of BNT162b2 compared to  
333 those receiving two doses of CoronaVac, particularly in older age groups. Three recent doses  
334 of both vaccines offer very high levels of protection for older adults against severe outcomes,  
335 with no differences observed across vaccine types. It will be important to increase uptake of  
336 third vaccine doses, particularly in older adults who have so far received two doses of  
337 CoronaVac. Further investigation of the durability of protection provided by both vaccines is  
338 warranted and planned.

339

340

341

342 **ACKNOWLEDGMENTS**

343 The authors thank the Hong Kong Special Administrative Region Government and Hospital  
344 Authority for the timely sharing of COVID-19 vaccination and case data. The authors thank  
345 Julie Au for administrative support.

346

347 **FINANCIAL SUPPORT**

348 This project was supported by the China CDC-sponsored COVID-19 Vaccines Evaluation  
349 Program (COVEP). BJC is supported by the Theme-based Research Scheme (project no.  
350 T11-712/19-N) from the Research Grants Council from the University Grants Committee of  
351 Hong Kong, and an RGC Senior Research Fellowship (grant number: HKU SRFS2021-  
352 7S03).

353

354 **POTENTIAL CONFLICTS OF INTEREST:**

355 BJC reports honoraria from AstraZeneca, Fosun Pharma, GlaxoSmithKline, Moderna, Pfizer,  
356 Roche and Sanofi Pasteur. JN was previously employed by and owns shares in Sanofi. The  
357 authors report no other potential conflicts of interest.

358

359



360 **REFERENCES**

- 361 1. Cowling B, Ali S, Ng T, et al. Impact assessment of non-pharmaceutical interventions  
362 against coronavirus disease 2019 and influenza in Hong Kong: an observational study.  
363 *Lancet Public Health*. 2020;5(5):E297-E288.
- 364 2. The HK SAR Government. COVID-19 vaccination dashboard. Published 2022.  
365 Accessed March 17, 2022. <https://www.covidvaccine.gov.hk/en/dashboard>
- 366 3. HK SAR Government. Latest situation of COVID-19 (as of 16 March 2022). Published  
367 2022. Accessed March 17, 2021.  
368 [https://www.chp.gov.hk/files/pdf/local\\_situation\\_covid19\\_en.pdf](https://www.chp.gov.hk/files/pdf/local_situation_covid19_en.pdf)
- 369 4. The HK SAR Government. Third dose COVID-19 vaccination arrangements for persons  
370 under certain groups. Published online November 3, 2022. Accessed March 17, 2022.  
371 <https://www.info.gov.hk/gia/general/202111/03/P2021110300536.htm>
- 372 5. The HK SAR Government. Further expansion of COVID-19 vaccination arrangements  
373 from January 1. Published online December 24, 2021. Accessed March 17, 2022.  
374 <https://www.info.gov.hk/gia/general/202112/24/P2021122400509.htm>
- 375 6. Tsang J. Coronavirus: vaccine outreach teams to visit ‘all Hong Kong care facilities by  
376 Friday’, at home jabs to be offered to residents with mobility issues. *South China*  
377 *Morning Post*. March 13, 2022.
- 378 7. news.gov.hk. Jab time interval to be shortened. news.gov.uk. Published 2022. Accessed  
379 March 18, 2022.  
380 [https://www.news.gov.hk/eng/2022/03/20220304/20220304\\_174704\\_235.html](https://www.news.gov.hk/eng/2022/03/20220304/20220304_174704_235.html)

- 381 8. Lopez Bernal J, Andrews N, Gower C, et al. Effectiveness of the Pfizer-BioNTech and  
382 Oxford-AstraZeneca vaccines on covid-19 related symptoms, hospital admissions, and  
383 mortality in older adults in England: test negative case-control study. *BMJ*.  
384 2021;373:n1088-n1088. doi:10.1136/bmj.n1088
- 385 9. Hall VJ, Foulkes S, Saei A, et al. COVID-19 vaccine coverage in health-care workers in  
386 England and effectiveness of BNT162b2 mRNA vaccine against infection (SIREN): a  
387 prospective, multicentre, cohort study. *Lancet Lond Engl*. 2021;397(10286):1725-1735.  
388 doi:10.1016/S0140-6736(21)00790-X
- 389 10. Thompson M, Burgess J, Naleway A, et al. Interim Estimates of Vaccine Effectiveness  
390 of BNT162b2 and mRNA-1273 COVID-19 Vaccines in Preventing SARS-CoV-2  
391 Infection Among Health Care Personnel, First Responders, and Other Essential and  
392 Frontline Workers - Eight U.S. Locations, December 2020-March 2. *MMWR Morb*  
393 *Mortal Wkly Rep*. 2021;70:495-500.
- 394 11. Dagan N, Barda N, Kepten E, et al. BNT162b2 mRNA Covid-19 Vaccine in a  
395 Nationwide Mass Vaccination Setting. *N Engl J Med*. 2021;384(15):1412-1423.  
396 doi:10.1056/NEJMoa2101765
- 397 12. Lopez Bernal J, Andrews N, Gower C, et al. Effectiveness of Covid-19 Vaccines against  
398 the B.1.617.2 (Delta) Variant. *N Engl J Med*. 2021;385(7):585-594.  
399 doi:10.1056/NEJMoa2108891
- 400 13. Pouwels K, Pritchard E, Matthews PC, et al. Effect of Delta variant on viral burden and  
401 vaccine effectiveness against new SARS-CoV-2 infections in the UK. *Nat Med*.  
402 2021;27:2127-2135. doi:<https://doi.org/10.1038/s41591-021-01548-7>

- 403 14. Polack FP, Thomas SJ, Kitchin N, et al. Safety and Efficacy of the BNT162b2 mRNA  
404 Covid-19 Vaccine. *N Engl J Med.* 2020;383(27):2603-2615.  
405 doi:10.1056/NEJMoa2034577
- 406 15. Goldberg Y, Mandel M, Bar-On YM, et al. Waning Immunity after the BNT162b2  
407 Vaccine in Israel. *N Engl J Med.* 2021;385(24):e85-e85. doi:10.1056/NEJMoa2114228
- 408 16. Israel A, Merzon E, Schäffer AA, et al. Elapsed time since BNT162b2 vaccine and risk  
409 of SARS-CoV-2 infection: test negative design study. *BMJ.* 2021;375:e067873.  
410 doi:10.1136/bmj-2021-067873
- 411 17. Andrews N, Tessier E, Stowe J, et al. Duration of Protection against Mild and Severe  
412 Disease by Covid-19 Vaccines. *N Engl J Med.* 2022;386(4):340-350.  
413 doi:10.1056/NEJMoa2115481
- 414 18. Andrews N, Stowe J, Kirsebom F, et al. Covid-19 Vaccine Effectiveness against the  
415 Omicron (B.1.1.529) Variant. *N Engl J Med.* Published online March 2, 2022.  
416 doi:10.1056/NEJMoa2119451
- 417 19. Collie S, Champion J, Moultrie H, Bekker LG, Gray G. Effectiveness of BNT162b2  
418 Vaccine against Omicron Variant in South Africa. *N Engl J Med.* 2022;386(5):494-496.  
419 doi:10.1056/NEJMc2119270
- 420 20. Buchan SA, Chung H, Brown KA, et al. Effectiveness of COVID-19 vaccines against  
421 Omicron or Delta symptomatic infection and severe outcomes. *medRxiv.* Published  
422 online 2022:2021.12.30.21268565. doi:10.1101/2021.12.30.21268565
- 423 21. UKHSA. *COVID-19 Vaccine Surveillance Report.*; 2022:12-13. Accessed March 18,  
424 2022.

- 425 <https://assets.publishing.service.gov.uk/government/uploads/system/uploads/attachment>  
426 [\\_data/file/1057599/Vaccine\\_surveillance\\_report\\_-\\_week-8.pdf](https://assets.publishing.service.gov.uk/government/uploads/system/uploads/attachment_data/file/1057599/Vaccine_surveillance_report_-_week-8.pdf)
- 427 22. Cerqueira-Silva T, Katikireddi SV, de Araujo Oliveira V, et al. Vaccine effectiveness of  
428 heterologous CoronaVac plus BNT162b2 in Brazil. *Nat Med*. Published online February  
429 9, 2022. doi:10.1038/s41591-022-01701-w
- 430 23. Suah JL, Husin M, Keng Tok PS, et al. Waning COVID-19 Vaccine Effectiveness for  
431 BNT162b2 and CoronaVac in Malaysia: An Observational Study. *medRxiv*. Published  
432 online January 1, 2022:2022.01.15.22269326. doi:10.1101/2022.01.15.22269326
- 433 24. Suryatma A, Anasi R, Hananto M, et al. Effectiveness of the Inactivated COVID-19  
434 Vaccine (CoronaVac) in Adult Population in Bali, Indonesia. *medRxiv*. Published online  
435 2022:2022.02.02.22270351. doi:10.1101/2022.02.02.22270351
- 436 25. Jara A, Undurraga EA, González C, et al. Effectiveness of an Inactivated SARS-CoV-2  
437 Vaccine in Chile. *N Engl J Med*. 2021;385(10):875-884. doi:10.1056/NEJMoa2107715
- 438 26. Haas EJ, Angulo FJ, McLaughlin JM, et al. Impact and effectiveness of mRNA  
439 BNT162b2 vaccine against SARS-CoV-2 infections and COVID-19 cases,  
440 hospitalisations, and deaths following a nationwide vaccination campaign in Israel: an  
441 observational study using national surveillance data. *The Lancet*.  
442 2021;397(10287):1819-1829. doi:10.1016/S0140-6736(21)00947-8
- 443 27. Kong X, Yang Y, Gao J, et al. Overview of the health care system in Hong Kong and its  
444 referential significance to mainland China. *J Chin Med Assoc*. 2015;78(10):569-573.  
445 doi:<https://doi.org/10.1016/j.jcma.2015.02.006>

- 446 28. McMenamin ME, Bond HS, Sullivan SG, Cowling BJ. Estimation of Relative Vaccine  
447 Effectiveness in Influenza: A Systematic Review of Methodology. *Epidemiology*.  
448 Published online 2022.  
449 [https://journals.lww.com/epidem/Fulltext/9000/Estimation\\_of\\_Relative\\_Vaccine\\_Effect](https://journals.lww.com/epidem/Fulltext/9000/Estimation_of_Relative_Vaccine_Effectiveness_in.98179.aspx)  
450 [iveness\\_in.98179.aspx](https://journals.lww.com/epidem/Fulltext/9000/Estimation_of_Relative_Vaccine_Effectiveness_in.98179.aspx)
- 451 29. World Health Organisation. The Sinovac-CoronaVac COVID-19 vaccine: What you  
452 need to know. who.int. Published September 2, 2021. Accessed March 21, 2022.  
453 [https://www.who.int/news-room/feature-stories/detail/the-sinovac-covid-19-vaccine-](https://www.who.int/news-room/feature-stories/detail/the-sinovac-covid-19-vaccine-what-you-need-to-know)  
454 [what-you-need-to-know](https://www.who.int/news-room/feature-stories/detail/the-sinovac-covid-19-vaccine-what-you-need-to-know)
- 455 30. Scientific Committee on Emerging and Zoonotic Diseases and Scientific Committee on  
456 the Use of COVID-19 Vaccines in Hong Kong. *Consensus Interim Recommendations*  
457 *on the Use of COVID-19 Vaccines in Hong Kong*. Centre for Health Protection; 2022.  
458 Accessed March 21, 2022.  
459 [https://www.chp.gov.hk/files/pdf/consensus\\_interim\\_recommendations\\_on\\_the\\_use\\_of\\_](https://www.chp.gov.hk/files/pdf/consensus_interim_recommendations_on_the_use_of_covid19_vaccines_in_hong_kong_25feb.pdf)  
460 [covid19\\_vaccines\\_in\\_hong\\_kong\\_25feb.pdf](https://www.chp.gov.hk/files/pdf/consensus_interim_recommendations_on_the_use_of_covid19_vaccines_in_hong_kong_25feb.pdf)
- 461 31. Kok KH, Wong SC, Chan WM, et al. Co-circulation of two SARS-CoV-2 variant strains  
462 within imported pet hamsters in Hong Kong. *Emerg Microbes Infect*. 2022;11(1):689-  
463 698. doi:10.1080/22221751.2022.2040922
- 464 32. Cheng VCC, Ip JD, Chu AWH, et al. Rapid spread of SARS-CoV-2 Omicron subvariant  
465 BA.2 in a single-source community outbreak. *Clin Infect Dis*. Published online March  
466 10, 2022:ciac203. doi:10.1093/cid/ciac203
- 467 33. UKHSA. *COVID-19 Vaccine Surveillance Report*. UKHSA; 2022:13. Accessed March  
468 20, 2022.

469 [https://assets.publishing.service.gov.uk/government/uploads/system/uploads/attachment](https://assets.publishing.service.gov.uk/government/uploads/system/uploads/attachment_data/file/1061532/Vaccine_surveillance_report_-_week_11.pdf)  
470 [\\_data/file/1061532/Vaccine\\_surveillance\\_report\\_-\\_week\\_11.pdf](https://assets.publishing.service.gov.uk/government/uploads/system/uploads/attachment_data/file/1061532/Vaccine_surveillance_report_-_week_11.pdf)

471 34. Chemaitelly H, Ayoub HH, AlMukdad S, et al. Duration of mRNA vaccine protection  
472 against SARS-CoV-2 Omicron BA.1 and BA.2 subvariants in Qatar. *medRxiv*.  
473 Published online January 1, 2022:2022.03.13.22272308.  
474 doi:10.1101/2022.03.13.22272308

475 35. Tenforde M, Self W, Gaglani M, et al. Effectiveness of mRNA Vaccination in  
476 Preventing COVID-19-Associated Invasive Mechanical Ventilation and Death - United  
477 States, March 2021-January 2022. *MMWR Morb Mortal Wkly Rep*. 2022; ePub: 18  
478 March 2022. doi:<http://dx.doi.org/10.15585/mmwr.mm7112e1>

479 36. Xiao J, Cheung J, Wu P, Ni M, Cowling B, Liao Q. Temporal changes in factors  
480 associated with COVID-19 vaccine hesitancy and uptake among adults in Hong Kong:  
481 Serial cross-sectional surveys. *Lancet Reg Health - West Pac*. 2022;(In press).

482 37. Remschmidt C, Wichmann O, Harder T. Frequency and impact of confounding by  
483 indication and healthy vaccinee bias in observational studies assessing influenza vaccine  
484 effectiveness: a systematic review. *BMC Infect Dis*. 2015;15(1):429.  
485 doi:10.1186/s12879-015-1154-y

486 38. Peng Q, Zhou R, Wang Y, et al. Waning immune responses against SARS-CoV-2  
487 variants of concern among vaccinees in Hong Kong. *eBioMedicine*. 2022;77.  
488 doi:10.1016/j.ebiom.2022.103904

489

490

491 **FIGURE LEGENDS**

492 Figure 1. Daily incidence of (A) all PCR confirmed COVID-19 cases (B) mild/moderate  
493 cases in the early part of the fifth wave prior to 15 February 2022, (C) severe/fatal cases, and  
494 (D) deaths throughout the fifth wave in Hong Kong by vaccination status, where mild disease  
495 is defined as those assigned ‘Mild’ as their worst condition and severe disease is defined as  
496 having ever been listed as ‘Serious’ or ‘Critical’ by the Hospital Authority during  
497 hospitalisation for COVID-19. Vaccination status was categorised according to the number of  
498 doses received plus a 14-day lag for all doses, to allow for the immune response to  
499 vaccination. The drop in mild/moderate cases on 4 March was due to a very small number of  
500 cases being reported as having been admitted to hospital or isolation facilities on that day.

501

502 Figure 2. Vaccine status of population and those experiencing mild/moderate, severe/fatal  
503 and fatal COVID-19 as at 8 March 2022 as a percent of the population within a given age  
504 group shown by vaccine type and number of doses.

505

506

507

508

509 Table 1. Descriptive characteristics of confirmed COVID-19 cases in Hong Kong classified  
510 as having mild, severe or fatal disease between 31 December 2021 and 8 March 2022.

	Mild disease (N= 5474)	Severe disease (N=5294)	Fatal disease (N=4093)
<b>Age</b>			
20-49 years	3144	101	39
50-69 years	1602	784	488
≥70 years	728	4408	3566
<b>Sex</b>			
Male	2337	3245	2528
Female	3137	2049	1565
<b>Vaccination status<sup>b</sup></b>			
No doses	1300	4064	3277
One dose			
<i>BNT162b2</i>	151	73	44
<i>CoronaVac</i>	226	532	374
Two doses			
<i>BNT162b2</i>	2139	130	74
<i>CoronaVac</i>	1271	434	287
Three doses			
<i>BNT162b2</i>	126	12	7
<i>CoronaVac</i>	210	14	7
<b>Median (25<sup>th</sup>, 75<sup>th</sup> percentile) of days between last vaccine dose and positive SARS-CoV-2 test result</b>			
One dose	28 (21, 35)	23 (17, 37)	24 (17, 38)
Two doses	181 (149, 214)	132 (51, 169)	129 (54, 168)
Three doses	35 (24, 60)	51 (25, 79)	66 (44, 93)

511 <sup>a</sup>Note these are not missing from fatal outcomes <sup>b</sup>Number of doses plus 14-day lag  
512

513



514

515 Table 2. Vaccine effectiveness by dose (one, two, three) and vaccine type (CoronaVac,  
516 BNT162b2) in all ages and within age categories (20-59, ≥60) against COVID-19 related  
517 mild/moderate disease, severe/fatal disease and death.

	One dose		Two doses		Three doses	
	BNT162b2	CoronaVac	BNT162b2	CoronaVac	BNT162b2	CoronaVac
<b>Mild/moderate disease</b>						
20-59 years	37.4 (0.7, 60.6)	2.1 (-53.3, 37.5)	31.0 (1.6, 51.7)	17.9 (-18.0, 42.9)	71.5 (54.5, 82.1)	42.3 (11.4, 62.4)
≥60 years	None <sup>a</sup>	None <sup>a</sup>	None <sup>a</sup>	None <sup>a</sup>	71.6 (43.5, 85.7)	50.7 (12.9, 72.1)
<b>Severe/fatal disease</b>						
20-59 years	85.0 (69.1, 92.7)	60.9 (40.6, 74.3)	95.2 (92.9, 96.8)	91.7 (87.8, 94.4)	98.5 (95.9, 99.4)	98.5 (95.2, 99.5)
60-69 years	59.9 (29.3, 77.3)	55.1 (30.9, 70.9)	91.1 (85.4, 94.6)	82.6 (74.2, 88.2)	99.2 (96.7, 99.8)	98.5 (95.3, 99.6)
70-79 years	71.5 (48.9, 84.1)	33.9 (8.1, 52.5)	89.4 (83.0, 93.3)	80.8 (72.8, 86.5)	99.5 (96.0, 99.9)	96.7 (92.3, 98.6)
≥80 years	65.0 (42.2, 78.8)	35.0 (8.8, 53.7)	84.5 (75.5, 90.2)	60.2 (43.9, 71.8)	95.7 (89.0, 98.3)	98.6 (94.3, 99.7)
<b>Mortality</b>						
20-59 years	93.7 (74.2, 98.5)	65.4 (38.6, 79.4)	96.4 (93.6, 98.0)	94.0 (89.6, 96.5)	99.4 (95.6, 99.9)	- <sup>b</sup> -
60-69 years	63.3 (30.7, 80.5)	70.2 (51.3, 81.7)	93.7 (88.6, 96.5)	87.6 (80.9, 91.9)	98.9 (95.3, 99.7)	98.7 (94.4, 99.7)
70-79 years	81.3 (60.6, 91.1)	48.9 (28.1, 63.7)	92.2 (86.5, 95.5)	84.4 (77.5, 89.2)	- <sup>b</sup> -	97.2 (92.3, 99.0)
≥80 years	40.5 (14.9, 58.4)	71.8 (50.6, 83.9)	88.2 (80.2, 93.0)	66.8 (51.9, 77.0)	96.0 (88.8, 98.6)	99.2 (94.3, 99.9)

518

519 <sup>a</sup> No evidence of protection based on a negative or very small positive point estimate and wide confidence

520 intervals.

521 <sup>b</sup> Insufficient outcomes to estimate

522

523

524

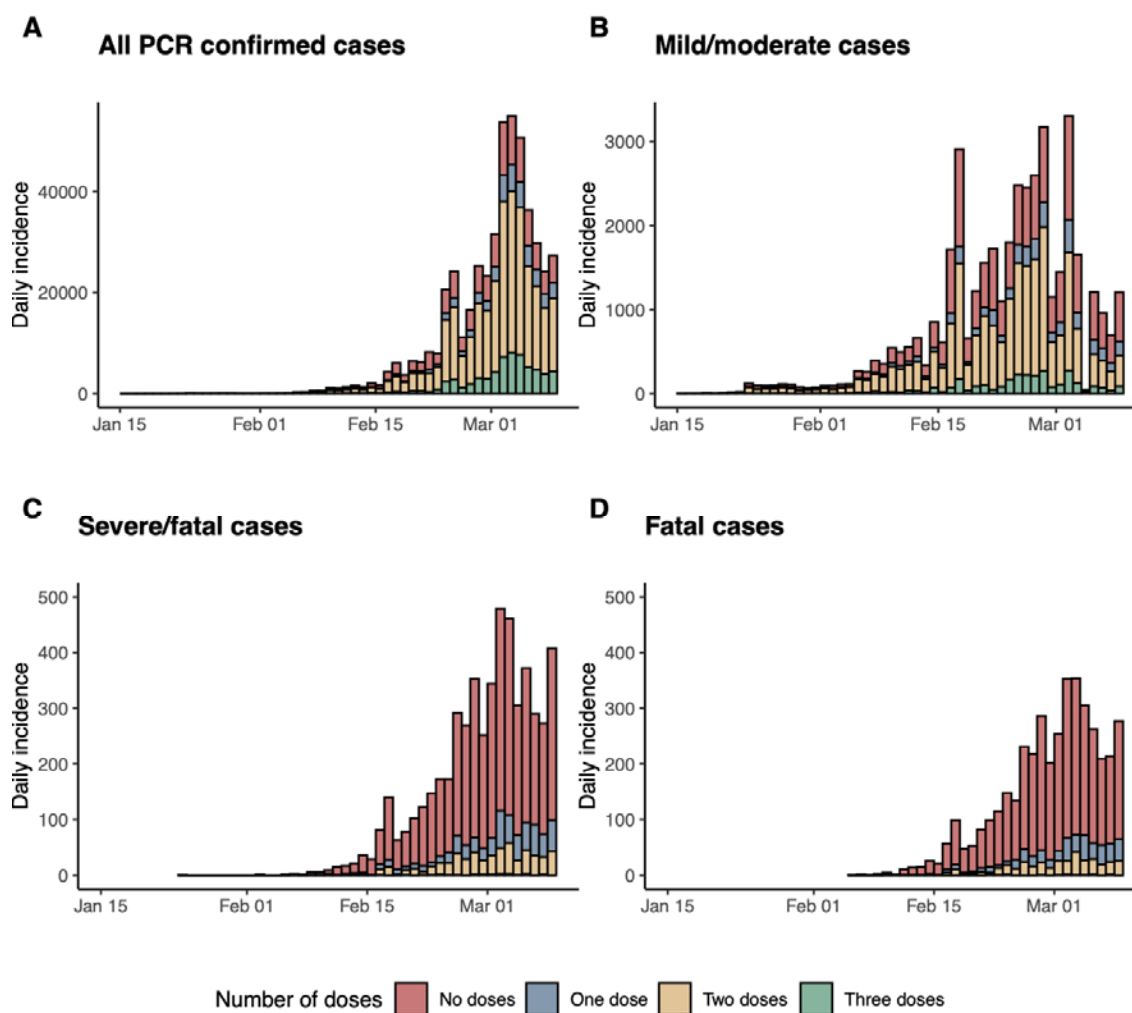
525 Table 3. Relative vaccine effectiveness of a three versus two dose BNT162b2 schedule and a  
 526 three versus two dose CoronaVac schedule against mild disease, severe disease and mortality  
 527 as defined by Hospital Authority.

	Relative VE of three doses vs two doses of same vaccine technology (%)	
	CoronaVac	BNT162b2
<b>Mild/moderate disease</b>		
20-59 years	29.7 (-7.7, 54.1)	58.6 (34.4, 73.9)
≥60 years	57.0 (23.4, 75.9)	63.8 (26.7, 82.1)
<b>Severe/fatal disease</b>		
20-59 years	81.8 (40.6, 94.4)	68.3 (9.8, 88.9)
60-69 years	91.7 (72.5, 97.5)	91.1 (61.2, 98.0)
70-79 years	83.0 (58.8, 93.0)	94.9 (61.4, 99.3)
≥80 years	96.6 (85.7, 99.2)	71.9 (25.1, 89.5)
<b>Mortality</b>		
20-59 years	- <sup>a</sup>	83.1 (-28.6, 97.8)
60-69 years	89.2 (53.9, 97.4)	82.2 (20.0, 96.0)
70-79 years	82.4 (49.4, 93.8)	- <sup>a</sup>
≥80 years	97.7 (82.8, 99.7)	66.2 (-1.3, 88.7)

528  
 529 <sup>a</sup> Insufficient outcomes to estimate

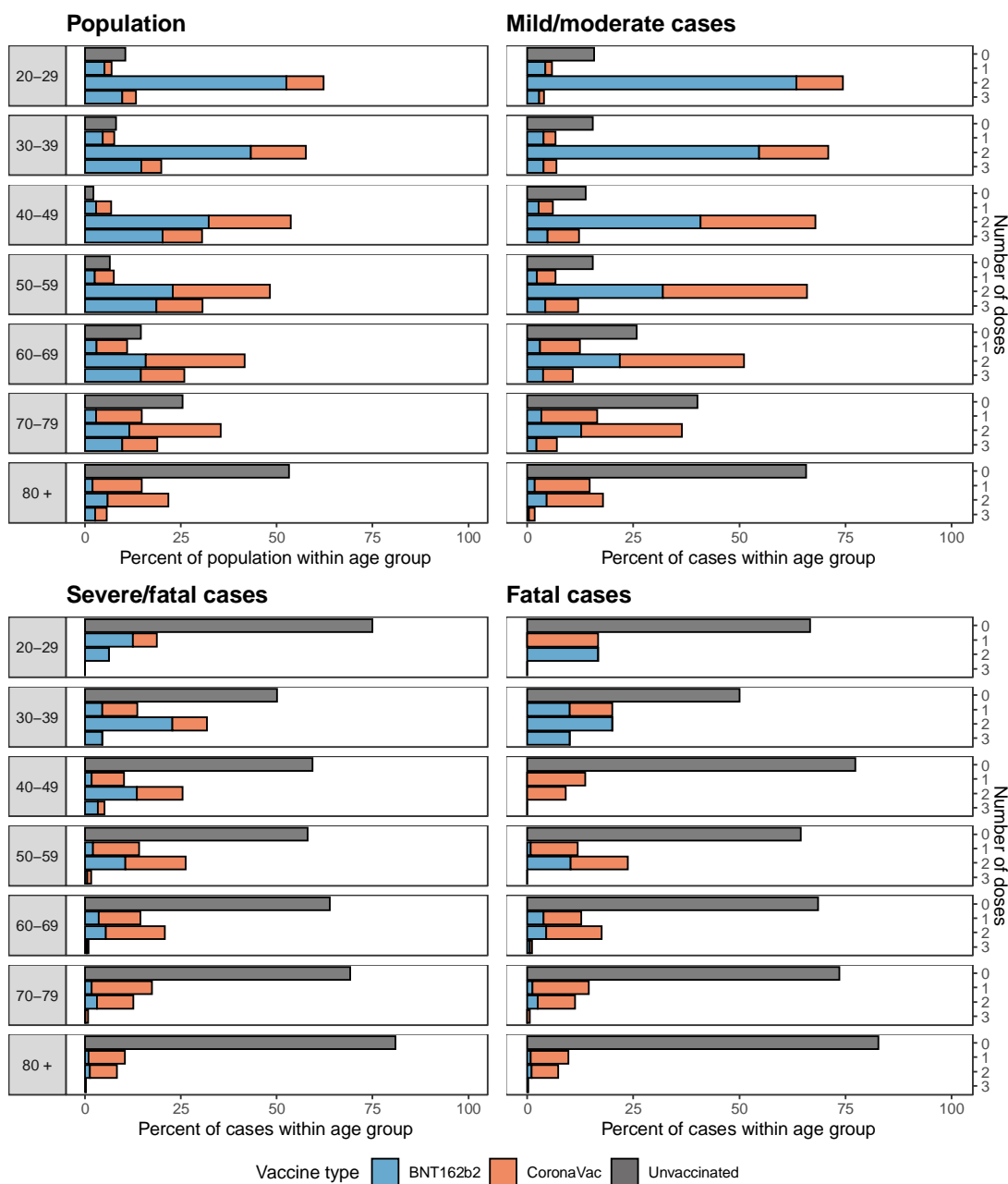
530  
 531

532 Figure 1  
533



534  
535  
536

537 Figure 2  
538



539