

# Multi-organ impairment and Long COVID: a 1-year prospective, longitudinal cohort study

Andrea Dennis, PhD<sup>1</sup>; Daniel J Cuthbertson, PhD<sup>2</sup>; Dan Wootton, PhD<sup>3</sup>; Michael Crooks, MD<sup>4,5</sup>; Mark Gabbay, MD<sup>6</sup>; Nicole Eichert, PhD<sup>1</sup>; Sofia Mouchti<sup>1</sup>; Michele Pansini, MD<sup>7</sup>; Adriana Roca-Fernandez<sup>1</sup>; Helena Thomaides-Brears, PhD<sup>1</sup>; Matt Kelly, PhD<sup>1</sup>; Matthew Robson, PhD<sup>1</sup>; Lyth Hishmeh<sup>8</sup>; Emily Attree, MD<sup>9</sup>; Melissa Heightman, PhD<sup>10</sup>; Rajarshi Banerjee, PhD<sup>1</sup>; Amitava Banerjee, PhD<sup>10,11,12,\*</sup>

<sup>1</sup>Perspectum, Oxford, UK

<sup>2</sup>Institute of Cardiovascular and Metabolic Medicine, University of Liverpool, Liverpool, UK

<sup>3</sup>Institute of Infection, Veterinary and Ecological Sciences, University of Liverpool, Liverpool, UK

<sup>4</sup>Department of Respiratory Medicine, Hull and East Yorkshire Hospitals NHS Foundation Trust, Hull, UK

<sup>5</sup>Institute of Clinical and Applied Health Research, University of Hull, Hull, UK

<sup>6</sup>Institute of Population Health Sciences, University of Liverpool, Liverpool University Hospitals NHS Foundation Trust, Liverpool, UK

<sup>7</sup>Department of Radiology, John Radcliffe Hospital, Oxford University Hospitals NHS Foundation Trust, Oxford

<sup>8</sup>Long COVID SOS, Oxford, UK

<sup>9</sup>UKDoctors#Longcovid, London, UK

<sup>10</sup>Department of Medicine, University College London Hospitals NHS Foundation Trust, London, UK

<sup>11</sup>Institute of Health Informatics, University College London, London, UK

<sup>12</sup>Department of Cardiology, Barts Health NHS Trust, London, UK

## \*Corresponding Author:

Professor Amitava Banerjee MA MPH DPhil FHEA FAHA FESC FRCP FRCP (Ed) FFCI  
Professor of Clinical Data Science and Honorary Consultant Cardiologist  
Institute of Health Informatics, University College London  
Adjunct Associate Professor in Public Health  
Amrita Institute of Medical Sciences, Kochi, India  
E-mail: [ami.banerjee@ucl.ac.uk](mailto:ami.banerjee@ucl.ac.uk)  
Tel: 02035495449

**Manuscript wordcount:** 2980 words

**Key points:**

- Question: What is the prevalence of organ impairment in Long COVID at 6- and 12-months post-COVID-19?
- Findings: In a prospective study of 536 mainly non-hospitalised individuals, symptom burden decreased, but single organ impairment persisted in 59% at 12 months post-COVID-19.
- Meaning: Organ impairment in Long COVID has implications for symptoms, quality of life and longer-term health, signalling need for prevention and integrated care of Long COVID.

## Abstract

**Importance:** Multi-organ impairment associated with Long COVID is a significant burden to individuals, populations and health systems, presenting challenges for diagnosis and care provision. Standardised assessment across multiple organs over time is lacking, particularly in non-hospitalised individuals.

**Objective:** To determine the prevalence of organ impairment in Long COVID patients at 6 and at 12 months after initial symptoms and to explore links to clinical presentation.

**Design:** This was a prospective, longitudinal study in individuals following recovery from acute COVID-19. We assessed symptoms, health status, and multi-organ tissue characterisation and function, using consensus definitions for single and multi-organ impairment. Physiological and biochemical investigations were performed at baseline on all individuals and those with organ impairment were reassessed, including multi-organ MRI, 6 months later.

**Setting:** Two non-acute settings (Oxford and London).

**Participants:** 536 individuals (mean 45 years, 73% female, 89% white, 32% healthcare workers, 13% acute COVID-19 hospitalisation) completed baseline assessment (median: 6 months post-COVID-19). 331 (62%) with organ impairment or incidental findings had follow up, with reduced symptom burden from baseline (median number of symptoms: 10 and 3, at 6 and 12 months).

**Exposure:** SARS-CoV-2 infection 6 months prior to first assessment.

**Main outcome:** Prevalence of single and multi-organ impairment at 6 and 12 months post-COVID-19.

**Results:** Extreme breathlessness (36% and 30%), cognitive dysfunction (50% and 38%) and poor health-related quality of life (EQ-5D-5L<0.7; 55% and 45%) were common at 6 and 12 months, and associated with female gender, younger age and single organ impairment. At baseline, there was fibro-inflammation in the heart (9%), pancreas (9%), kidney (15%) and liver (11%); increased volume in liver (7%), spleen (8%) and kidney (9%); decreased capacity in lungs (2%); and excessive fat deposition in the liver (25%) and pancreas (15%). Single and multi-organ impairment were present in 59% and 23% at baseline, persisting in 59% and 27% at follow-up.

**Conclusion and Relevance:** Organ impairment was present in 59% of individuals at 6 months post-COVID-19, persisting in 59% of those followed up at 1 year, with implications for symptoms, quality of life and longer-term health, signalling need for prevention and integrated care of Long COVID.

**Trial Registration:** ClinicalTrials.gov Identifier: NCT04369807

## Introduction

Symptoms of Long COVID, also known as post-acute sequelae of COVID-19 (PASC), are well-documented<sup>1,2</sup>, but natural history is poorly characterised, whether by symptoms, organ impairment or function<sup>3-7</sup>. Among 3,762 individuals with suspected or confirmed COVID-19, fatigue, breathlessness and cognitive dysfunction were the most debilitating symptoms beyond 35 weeks<sup>8</sup>. In the UK's largest Long COVID clinic, non-hospitalised patients required specialist referral at similar rates to hospitalised patients and were more likely to report breathlessness and fatigue, with reduced health-related quality of life (HRQoL)<sup>8</sup>. A US study in 270,000 individuals post-COVID-19 showed one-third had persistent symptoms at 3-6 months (more common than post-influenza symptoms), possibly due to direct organ-specific rather than general viral effects, and potentially informing development of effective treatments<sup>9</sup>.

Long COVID may be linked to severity of initial illness in some hospitalised patients, but prognostic factors are neither defined nor investigated systematically in non-hospitalised patients<sup>8-10</sup>. To conduct trials of possible therapies for Long COVID, we need stratification by symptoms or investigations<sup>3</sup>. Our preliminary MRI data in 201 individuals showed mild organ impairment in the heart, lungs, kidneys, liver, pancreas, and spleen, with single and multi-organ impairment in 70% and 29%, respectively, 4 months after COVID-19. Clinical utility of these MR metrics for chronic and multi-system conditions has been shown<sup>11-12</sup>. More severe ongoing symptoms of breathlessness and fatigue were associated with myocarditis ( $p < 0.05$ )<sup>10</sup>, but symptoms and multi-organ manifestations have not been correlated.

In the UK and other countries, health system and research responses have begun at scale<sup>13-15</sup>. However, clinical patient pathways are unclear and there are still no proven, evidence-based therapies, whether in subgroups or in the overall Long COVID population. Single and multi-organ impairment need investigation over medium- and long-term to assess resource utilisation and health system needs.

In individuals with Long COVID, we therefore prospectively investigated:

1. Symptoms, organ impairment and function over 1 year, particularly relating to ongoing breathlessness, cognitive dysfunction and HRQoL
2. Associations between symptoms and organ impairment

## **Methods**

### **Patient Population and Study Design**

Recruitment was by response to advertisement or specialist referral to two non-acute sites (Perspectum, Oxford and Mayo Clinic Healthcare, London) from April 2020 to August 2021, based on prior SARS-CoV-2 infection and written informed consent. (Supplementary Methods). Exclusion criteria were active respiratory infection symptoms (temperature  $>37.8^{\circ}\text{C}$  or  $\geq 3$  coughing episodes in 24 hours); hospital discharge in last 7 days; asymptomatic or hospital discharge  $\geq 4$  months prior to enrolment and contraindications to MRI (e.g. pacemakers, defibrillators, metallic implanted devices, claustrophobia). Those with evidence of organ impairment, based on bloods, MRI, or incidental findings, were invited for 6-month follow-up (contacted on  $\geq 2$  occasions to minimise loss to follow-up). Each visit comprised MRI and blood investigations (full blood count, biochemistry) and online questionnaires completed beforehand<sup>10</sup>.

### **Diagnostic Assessment in Non-acute Settings**

Quantitative multi-organ MRI (CoverScan, Perspectum, Oxford) was used to assess organ impairment as previously reported (Figure S1)<sup>10</sup>, using healthy controls (no prior COVID-19 diagnosis; 59 in Oxford, 33 in London). Participants underwent a 40-minute MRI scan of lungs, heart, kidney, liver, pancreas and spleen on 1.5T or 3T Siemens scanners at three imaging sites (Oxford: MAGNETOM Aera 1.5T, Mayo Healthcare London; MAGNETOM Vida 3T, Chenies Mews Imaging Centre London; MAGNETOM Prisma 3T). MR metrics were standardised to deliver a single report interpretable by clinicians. Each report included 49 organ-specific metrics with reference ranges to determine impairment (updated from our prior study<sup>16</sup>) after determining distribution of each metric in healthy controls matched for age and sex (n=92) and for organ volumes from healthy controls representing complete sex and height subgroups (N=1835) in this study and UK Biobank<sup>17</sup> (Table S1a and b). Repeatability of the metrics was evaluated in healthy controls using standardized performance testing criteria. Technical success was determined by reporting quality-assured measures for each variable reported herein, and overall, in delivering a report for each patient.

### **Symptoms, Function and Organ Impairment**

Assessment focused on commonly reported symptoms, HRQoL and degree of breathlessness (Dyspnoea 12 scale<sup>8</sup>). HRQoL was assessed by validated EQ-5D-5L (EuroQOL), comprising: (1) five health dimensions (mobility, self-care, usual activities, pain and discomfort, and anxiety and depression) each at five severity levels (none, slight, moderate, severe, and extreme); (2) self-rated health using visual analogue scale (VAS) from 0 (worst imaginable) to 100 (best imaginable); (3) derived EQ-5D ‘utility’ or index score from 0 (‘dead’) to 1 (‘full health’)<sup>10</sup>. Participants were asked at follow-up about time off work due to COVID-19 (not done at baseline). Multi-organ impairment at baseline and follow-up was defined as  $\geq 2$  MRI measurements from different organs outside reference ranges. Elevations in liver or kidney volume were excluded from definitions of organ impairment<sup>10</sup>. Further details are in Supplementary Methods.

### **Associations Between Symptoms and Organ Impairment**

The most common symptoms were classified according to published subgroups<sup>8</sup>: systemic (fever, myalgia, joint pain, fatigue/malaise, headaches), cardiopulmonary (wheezing, chest pain, shortness of breath), cognitive dysfunction (poor memory, cognition and concentration), poor HRQoL (EQ-5D utility score $<0.7$ ) and a subset of the cardiopulmonary subgroup for severe breathlessness (dyspnoea-12 total score $\geq 10$ ). Fisher’s exact or Kruskal Wallis tests were used for categoric and continuous data, comparing: (i) each of the 5 symptom groups vs. those with none of these symptoms, (ii) asymptomatic vs symptomatic at follow-up, and (iii) baseline vs follow-up or participants vs controls. Stepwise multi-variable logistic regression was performed for associations with 5 symptom groups at baseline or follow-up. Since pre-COVID data were unavailable, organ impairment may pre-date COVID-19. A sensitivity analysis was conducted, excluding those at risk of metabolic disease unlikely to have manifested between first symptoms and baseline assessment (including BMI  $\geq 30$  kg/m<sup>2</sup>, hypertension and diabetes) (Supplementary methods).

### **Statistical Analysis**

Based on UK Biobank studies of organ impairment, required sample size for associations between COVID-19 and 10% prevalence of liver impairment was 507<sup>18,19</sup>. Analyses were in R version 4.1.0, defining statistical significance by uncorrected p-value $<0.05$ (2-sided). Descriptive statistics were used for

baseline characteristics; normally distributed-continuous variables: mean(standard deviation, SD); non-normally distributed-continuous: median(interquartile range, IQR), and categorical variables: frequency(percentage).

## **Ethical Approval**

The protocol was approved by a UK ethics committee (20/SC/0185) and registered

(<https://clinicaltrials.gov/ct2/show/NCT04369807>).

## **Results**

### **Study Population for Diagnostic Assessment in Non-Acute Settings**

536 individuals (mean age 45 years, 73% female, median BMI 25 kg/m<sup>2</sup>, 13% COVID-19 hospitalisation, 32% healthcare workers) were included at baseline. 388 (72%) with organ impairment were eligible for follow-up, which 331 (62%) completed. Demographics were comparable to healthy controls (Table S1a). Most were 'UK first wave' (COVID-19 January-September 2020: n=497); 39 'second wave' (COVID-19 after September 2020). Median time from initial COVID-19 symptoms to baseline assessment, and baseline to follow-up were 182 (IQR: 132-222) and 196 days (IQR: 182-209). Demographics and risk factors showed no major differences between baseline and follow-up (Figure 1, Table 1). Participants with persistent symptoms in the five symptom groups were more likely to be female and obese at baseline (Table 2, Table S2). Technical success of MRI and integrated in-person assessment was 99.1% and 98.3% at baseline and follow-up assessments. Reports were delivered to patients and primary care clinicians in all cases.

### **Symptoms over 1 Year**

At baseline and follow-up, participants reported a median 10 (IQR: 8-11) symptoms and 3 (0-5) symptoms (p<0.001), respectively. At baseline, all five symptom groups had similar prevalence (systemic: 46%, cardiopulmonary: 44%, severe breathlessness: 36%, cognitive dysfunction: 50%, poor HRQoL: 55%); 13% reported none of these symptoms. At follow-up, symptoms were reduced, particularly systemic (1%) and cardiopulmonary (5%) (p<0.001). Exceptions were fatigue, breathlessness and cognitive dysfunction, where prevalence remained high. Some participants reported these symptoms only at follow-up. Females and individuals with obesity were more likely to have ≥1 of systemic symptoms,

cardiopulmonary symptoms or poor HRQoL ( $p < 0.001$ , 0.006 and  $< 0.001$  for sex and  $p = 0.002$ , 0.012 and 0.004 for BMI). Most common symptoms improved by follow-up: fatigue (98% to 64%), myalgia (89% to 35%), shortness of breath (89% to 47%), headache (84% to 34%), chest pain (82% to 38%), fever (71% to 2%), cough (75% to 11%) and sore throat (72% to 11%). 60/331 (18%) were asymptomatic at follow-up (Tables 1 and S2, Figure 2A).

### **Function over 1 Year**

HRQoL was poor at baseline: median VAS score 60% (40-70%) and median reported health utility index score 0.67 (IQR: 0.48-0.77) (Figure S2). The most highly ranked sub-optimal health dimensions were problems completing usual activities of living and pain (58% and 47% reporting moderate to extreme difficulties) (Figure S3). At follow-up, there was increased health utility index score to 0.71 (0.56, 0.81) ( $p < 0.01$ ), but 45% still reported utility score  $< 0.7$ . At 12 months, 30% still complained of severe breathlessness. Almost every participant (281/302, 93%) took COVID-19-related time off work (median: 150 days IQR [45-300]). 97% of healthcare workers took time off work (median 180 days [41-308]) and 62 (63%) took  $> 100$  days off work. Those with ongoing symptoms reported taking more time off work (median 172 days [42-300]) compared to those who recovered (median 54 days [42-300]) (Table 2).

### **Organ Impairment over 1 Year**

Most standard-of-care biochemical investigations were within normal range and not predictive of outcomes (Table S3), except lactate dehydrogenase (80/500 [16%] and 70/319 [22%]), creatinine kinase (40/508 [8%] and 41/323 [13%],  $p = 0.03$ ); cholesterol (236/508 [46%] and 157/326 [48%]); and mean cell haemoglobin concentration (106/508 [21%] and 49/324 [15%]) which were elevated at baseline and follow-up.

On MRI of 536 participants at baseline, 59% and 23% had impairment in  $\geq 1$  and  $\geq 2$  organs respectively (Figure 2b), although impairment was usually mild (Table S4), e.g., among participants with cardiac impairment, none had severe heart failure. Organ impairment between visits did not improve significantly, unlike symptoms (Figure 2a). Participants without organ impairment had lowest symptom burden. At baseline, lung impairment (lower fractional area change) and impairment in  $\geq 3$  organs were associated with high symptom burden. At 12 months, there was reduction in symptom burden, except fatigue,



breathlessness and reduced HRQoL where prevalence was unchanged (Figure S4). Healthcare workers were more likely to have liver impairment ( $p=0.017$  at baseline and  $p=0.044$  at follow-up) than the rest of the cohort.

In participants without symptoms at follow-up ( $n=60$ ), organ impairment was present in 43 (72%) at baseline and 37 (62%) at follow-up (Table 2). In symptomatic participants at follow-up ( $n=264$ ), there were 84 (32%) and 112 (42%) without organ impairment at baseline and follow-up, respectively. Liver steatosis, kidney fibro-inflammation and splenomegaly at baseline were more frequent in all symptom groups. Liver steatosis was associated with systemic symptoms and severe breathlessness (Table S2, Figure S5).

### **Associations Between Symptoms and Organ Impairment**

Looking at individual symptoms and by five symptom groups, neither abnormal biochemical investigations nor organ impairment were predictive of full recovery at follow-up (Tables S3-S6). Participants with normal MRI assessment had fewer baseline symptoms (Figure 3). Several liver-specific parameters were associated with specific symptom burden. High liver fat was present in 58/187 with severe breathlessness but only 70/257 without severe breathlessness at baseline. Conversely, low liver fat was more likely in those without severe breathlessness at both timepoints. High liver volume at follow-up was associated with lower HRQoL. Hepatomegaly was present in 20/138 with poor QoL but in only 8/167 with better QoL at follow-up. High liver fibro-inflammation was associated with cognitive dysfunction at follow-up: in 19% (24/124) with cognitive dysfunction but in only 12% (24/199) without cognitive dysfunction at follow-up (Table S6).

## Discussion

In this UK prospective study of largely non-hospitalised Long COVID, we have four new findings. First, we confirm multi-organ impairment at 6- and 12- months in 59% of individuals with Long COVID, with persistent symptoms and reduced function. Second, despite some associations between organ impairment and symptoms, there is currently insufficient evidence for distinct Long COVID subtypes. Blood biomarkers, the current standard of care, showed no relation to clinical presentation. Third, symptoms, blood investigations and quantitative, multi-organ MRI did not predict trajectory or recovery. Fourth, we demonstrate feasibility of scalable, multi-organ assessment in non-acute settings in the pandemic context.

Several studies confirm persistence of symptoms in individuals with Long COVID up to 1 year<sup>20–22</sup>. We now add that 3 in 5 people with Long COVID have impairment in at least one organ, and 1 in 4 have impairment in two or more organs, in some cases without symptoms. Impact on quality of life and time off work, particularly in healthcare workers, is a major concern for individuals, health systems and economies<sup>23</sup>. Many healthcare workers had no prior illness (2% diabetes, 2% heart disease and 22% asthma, which may play a pathophysiologic role<sup>24</sup>), but of 172 participants, 19 were still symptomatic at follow-up and off work at a median of 180 days. We need comparison with similar analyses from other Long COVID studies, and other long-term conditions<sup>25</sup>, with considerable workforce planning implications. There have been heterogeneous methods to investigate Long COVID, whether qualitative<sup>26–30</sup>

or quantitative<sup>7</sup>, or symptom surveys<sup>31</sup> versus cohort studies<sup>4,32</sup>. Most research still focuses on individual organs<sup>33–36</sup>. The scale of Long COVID burden necessitates action to develop, evaluate and implement evidence-based investigation, treatment and rehabilitation<sup>37</sup> (e.g., STIMULATE-ICP and other studies<sup>4</sup>).

Metabolic disease, including non-alcoholic liver disease and diabetes, are postulated to play a role in pathogenesis of severe COVID-19 and possibly Long COVID<sup>38</sup>. We observe associations with markers of liver dysfunction, and increased risk of symptoms in female and obese individuals with Long COVID, which has been shown previously<sup>39–41</sup>. Cognitive impairment appears to develop in the natural history of Long COVID in some patients. As it is also associated with liver inflammation, it may be that, as with hepatic encephalopathy, disordered liver metabolism and gluconeogenesis may cause abnormal brain function. However, underlying mechanisms of the condition or syndrome remain elusive. We did not find evidence by symptoms, blood investigations or MRI to clearly define Long COVID subtypes.

We observed symptom recovery at 12 months in 30% of individuals with Long COVID, particularly with cardiopulmonary and systemic symptoms, aligning with other longitudinal studies<sup>7,18,26</sup>. Our findings of reductions in HRQoL and time at work reinforce prior research and are concerning, despite improvement over time. Future research must consider associations between symptoms, multi-organ impairment and function in larger cohorts, enabling clearer stratification and evaluation of treatments.

The COVERSCAN study was initiated in the early pandemic first wave when face-to-face assessment and investigation, and reduced health system capacity were major concerns for patients and health professionals. In the UK and other countries, Long COVID carries high burden of investigations and healthcare utilisation across specialties, and definitive care pathways are lacking. We show feasibility, acceptability and scalability of a rapid (40-minute), multi-organ MRI protocol for practice and research. Alongside routine clinical assessment and blood tests, COVERSCAN can exclude organ impairment in integrated, multidisciplinary care pathways<sup>42</sup>. Such MRI assessment has potential application beyond the pandemic for multi-system assessment and investigation, including in lower resource settings.

### **Implications for Research**

There are three research implications. First, complex intervention trials, including care pathways from investigation to rehabilitation are needed to evaluate therapies. Second, associations between symptoms,

symptom groups, blood investigations and MRI must be investigated in larger populations. Third, Long COVID pathophysiology is still unclear, and should ideally be studied at the same time as clinical trials.

### **Implications for Clinical Practice and Public Health**

There are three practice and policy implications. First, CoverScan could be used to rule out organ impairment and to identify subgroups requiring specialist referral. Second, Long COVID is a multi-organ condition, needing multi-organ assessment and multi-disciplinary care. Third, poor 1-year post-COVID recovery rates highlight need for rehabilitation and integrated care, relevant to other long-term conditions.

### **Strengths and Limitations**

To date, this is the largest, comprehensive, systematic, multi-organ, post-COVID study over 1 year. The study cohort is representative of UK Long COVID populations in terms of risk factors and acute COVID-19 hospitalisation<sup>8,9</sup>. There are limitations. We did not have history and imaging prior to the pandemic and so it is difficult to determine if COVID-19/Long Covid caused impairment. There was no assessment of brain function. Not all participants had a laboratory-confirmed COVID-19 diagnosis. 38% of participants were not followed up. Generalizability of results from the UK's first COVID-wave to the global population requires further exploration. We successfully delivered multi-organ MRI to assess organ health, but clinical utility remains to be determined. Health utilisation (e.g. primary care interactions) and economic burden of Long COVID were not assessed. Time off work was not assessed at baseline when the UK was in lockdown with a national furlough scheme in operation. Patients with normal assessment at baseline were not followed up due to resource and funding constraints. Therefore, whilst 222/536 (41%) patients at baseline were defined as normal after assessment, we cannot say they had better outcomes. Nevertheless, we can model cost-saving of a single assessment versus multiple assessments to achieve a discharge decision.

### **Conclusions**

Long COVID symptoms commonly persist at 12 months, even in those not severely affected by acute COVID-19, predominantly observed in women. Diagnosis and follow up of Long COVID can be performed in non-acute settings. Continued research in multi-system assessment and pharmacotherapy

for those reporting ongoing fatigue, breathlessness, and cognitive problems is required to address Long COVID burden, in parallel with mechanistic studies to understand pathophysiology.

## Acknowledgements

The study was partly financed by an Amendment to a European Commission's Horizon 2020 grant 719445 (AMENDMENT Reference No AMD-719445-8): Non-invasive rapid assessment of chronic liver disease using Magnetic Resonance Imaging with LiverMultiScan (RADiCAL). AB has received funding from NIHR (including the STIMULATE-ICP study), AstraZeneca, European Union, UK Research and Innovation and British Medical Association. DW is funded by an NIHR advanced fellowship. MG is funded by ARC and DH&SC NIHR. Conflicts of interest: AD, NE, SF, MP, ARF, HTB, MK, MR and RB are employees of Perspectum.

## References

1. Groff D, Sun A, Ssentongo AE, et al. Short-term and Long-term Rates of Postacute Sequelae of SARS-CoV-2 Infection: A Systematic Review. *JAMA Network Open*. 2021;4(10). doi:10.1001/jamanetworkopen.2021.28568
2. Soriano JB MSMJRPDJWCCDWG on PC 19 Condition. A clinical case definition of post-COVID-19 condition by a Delphi consensus. *Lancet Infect Dis*. 2021;(S1473-3099(21)00703-9).
3. Yong SJ LS. Proposed subtypes of post-COVID-19 syndrome (or long-COVID) and their respective potential therapies. *Rev Med Virol*. 2021;(e2315.).
4. Routen A, O'Mahoney L, Ayoubkhani D, et al. Understanding and tracking the impact of long COVID in the United Kingdom. *Nature Medicine*. 2022;28(1). doi:10.1038/s41591-021-01591-4
5. Michelen M, Manoharan L, Elkheir N, et al. Characterising long COVID: A living systematic review. *BMJ Global Health*. 2021;6(9). doi:10.1136/bmjgh-2021-005427
6. Xie Y, Bowe B, Al-Aly Z. Burdens of post-acute sequelae of COVID-19 by severity of acute infection, demographics and health status. *Nature Communications*. 2021;12(1). doi:10.1038/s41467-021-26513-3
7. Al-Aly Z, Xie Y, Bowe B. High-dimensional characterization of post-acute sequelae of COVID-19. *Nature*. 2021;594(7862). doi:10.1038/s41586-021-03553-9
8. Heightman M, Prashar J, Hillman TE, et al. Post-COVID-19 assessment in a specialist clinical service: A 12-month, single-centre, prospective study in 1325 individuals. *BMJ Open Respiratory Research*. 2021;8(1). doi:10.1136/bmjresp-2021-001041
9. Taquet M, Dercon Q, Luciano S, Geddes JR, Husain M, Harrison PJ. Incidence, co-occurrence, and evolution of long-COVID features: A 6-month retrospective cohort study of 273,618 survivors of COVID-19. *PLoS Medicine*. 2021;18(9). doi:10.1371/journal.pmed.1003773
10. Dennis A, Wamil M, Alberts J, et al. Multiorgan impairment in low-risk individuals with post-COVID-19 syndrome: A prospective, community-based study. *BMJ Open*. 2021;11(3). doi:10.1136/bmjopen-2020-048391
11. Borlotti A, Thomaidis-Brears H, Georgiopoulos G, et al. The additive value of cardiovascular magnetic resonance in convalescent COVID-19 patients. *Frontiers in Cardiovascular Medicine*. 2022;in press.
12. Heber SD, Hetterich H, Lorbeer R, Bayerl C, Machann J, Auweter S, Storz C, Schlett CL, Nikolaou K, Reiser M, Peters A, Bamberg F. Pancreatic fat content by magnetic resonance

- imaging in subjects with prediabetes, diabetes, and controls from a general population without cardiovascular disease. *PLoS One*. 2017 May 17;12(5):e0177154.
13. Titze-de-Almeida R, da Cunha TR, Dos Santos Silva LD et al. Persistent, new-onset symptoms and mental health complaints in Long COVID in a Brazilian cohort of non-hospitalized patients. *BMC Infect Dis* . 2022;22(1):133.
14. Cohen K, Ren S, Heath K et al. Risk of persistent and new clinical sequelae among adults aged 65 years and older during the post-acute phase of SARS-CoV-2 infection: retrospective cohort study. *BMJ*. 2022;376:e068414.
15. Augustin M, Schommers P, Stecher M, et al. Post-COVID syndrome in non-hospitalised patients with COVID-19: a longitudinal prospective cohort study. *The Lancet Regional Health - Europe*. 2021;6. doi:10.1016/j.lanepe.2021.100122
16. Kim Y, Bitna-Ha, Shin-Woo Kim 2, BHKSCHKKBSHS. Post-acute COVID-19 syndrome in patients after 12 months from COVID-19 infection in Korea. *BMC Infect Dis* . 2022;22(1):93.
17. Sudlow C, Gallacher J, Allen N, et al. UK Biobank: An Open Access Resource for Identifying the Causes of a Wide Range of Complex Diseases of Middle and Old Age. *PLoS Medicine*. 2015;12(3). doi:10.1371/journal.pmed.1001779
18. Wilman HR, Kelly M, Garratt S, et al. Characterisation of liver fat in the UK Biobank cohort. *PLoS ONE*. 2017;12(2). doi:10.1371/journal.pone.0172921
19. Mojtahed A, Kelly CJ, Herlihy AH, et al. Reference range of liver corrected T1 values in a population at low risk for fatty liver disease—a UK Biobank sub-study, with an appendix of interesting cases. *Abdominal Radiology*. 2019;44(1). doi:10.1007/s00261-018-1701-2
20. Bellan M, Baricich A, Patrucco F, et al. Long-term sequelae are highly prevalent one year after hospitalization for severe COVID-19. *Scientific Reports*. 2021;11(1). doi:10.1038/s41598-021-01215-4
21. Kingery J.R. SMM, MP, LJD, RM. Health Status, Persistent Symptoms, and Effort Intolerance One Year After Acute COVID-19 Infection. *J Gen Intern Med* . 2022;24. 1-8.
22. Han Q, ZB, DL, SA. Long-Term Sequelae of COVID-19: A Systematic Review and Meta-Analysis of One-Year Follow-Up Studies on Post-COVID Symptoms. *Pathogens*. 2022;11(2):269.
23. Martin C, Luteijn M, Letton W, Robertson J, McDonald S. A model framework for projecting the prevalence and impact of Long-COVID in the UK. *PLoS ONE*. 2021;16(12 December). doi:10.1371/journal.pone.0260843
24. Cervia C, Zurbuchen Y, Taeschler P. Immunoglobulin signature predicts risk of post-acute COVID-19 syndrome. *Nat Commun* . 2022;13(1):446.
25. Gabbay M, Shiels C, Hillage J. Factors associated with the length of fit note-certified sickness episodes in the UK. *Occupational and Environmental Medicine*. 2015;72(7). doi:10.1136/oemed-2014-102307
26. Shah R, Ali FM, Nixon SJ, Ingram JR, Salek SM, Finlay AY. Measuring the impact of COVID-19 on the quality of life of the survivors, partners and family members: A cross-sectional international online survey. *BMJ Open*. 2021;11(5). doi:10.1136/bmjopen-2020-047680
27. Ladds E, Rushforth A, Wieringa S, et al. Persistent symptoms after Covid-19: qualitative study of 114 “long Covid” patients and draft quality principles for services. *BMC Health Services Research*. 2020;20(1). doi:10.1186/s12913-020-06001-y
28. Macpherson K Cooper K, Harbour J et al. Experiences of living with long COVID and of accessing healthcare services: a qualitative systematic review. *BMJ Open*. 2022;12(1):e050979.
29. Miyake E, Martin S. Long Covid: Online patient narratives, public health communication and vaccine hesitancy. *Digital Health*. 2021;7. doi:10.1177/20552076211059649
30. Buttery SC, Philip KEJ, Williams P, et al. Patient symptoms and experience following COVID-19: results from a UK wide survey. *BMJ Open Respiratory Research*. 2021;8(1). doi:10.1101/2021.04.15.21255348
31. Davis HE, Assaf GS, McCorkell L, et al. Characterizing long COVID in an international cohort: 7 months of symptoms and their impact. *eClinicalMedicine*. 2021;38. doi:10.1016/j.eclinm.2021.101019
32. Tleyjeh IM, Saddik B, Ramakrishnan RK, et al. Long term predictors of breathlessness, exercise intolerance, chronic fatigue and well-being in hospitalized patients with COVID-19: A cohort

- study with 4 months median follow-up. *Journal of Infection and Public Health*. 2022;15(1). doi:10.1016/j.jiph.2021.11.016
33. Wild JM, Porter JC, Molyneaux PL, et al. Understanding the burden of interstitial lung disease post-COVID-19: The UK Interstitial Lung Disease-Long COVID Study (UKILD-Long COVID). *BMJ Open Respiratory Research*. 2021;8(1). doi:10.1136/bmjresp-2021-001049
34. Badenoch JB, Rengasamy ER, Watson C, et al. Persistent neuropsychiatric symptoms after COVID-19: a systematic review and meta-analysis. *Brain Communications*. 2022;4(1). doi:10.1093/braincomms/fcab297
35. Yan Z, Yang M, Lai CL. Long covid-19 syndrome: A comprehensive review of its effect on various organ systems and recommendation on rehabilitation plans. *Biomedicines*. 2021;9(8). doi:10.3390/biomedicines9080966
36. Xie Y, Xu E, Bowe B. Long-term cardiovascular outcomes of COVID-19. *Nature*. Published online February 7, 2022.
37. Murray E, GH, BJ, BA. Development, deployment and evaluation of digitally enabled, remote, supported rehabilitation for people with long COVID-19 (Living With COVID-19 Recovery): protocol for a mixed-methods study. *BMJ Open*. 2022;12(2):e057408.
38. Khunti K, Davies MJ, Kosiborod MN, Nauck MA. Long COVID — metabolic risk factors and novel therapeutic management. *Nature Reviews Endocrinology*. 2021;17(7). doi:10.1038/s41574-021-00495-0
39. Ayoubkhani D, Khunti K, Nafilyan V, et al. Post-covid syndrome in individuals admitted to hospital with covid-19: Retrospective cohort study. *The BMJ*. 2021;372. doi:10.1136/bmj.n693
40. Aminian A, Bena J, Pantalone KM, Burguera B. Association of obesity with postacute sequelae of COVID-19. *Diabetes, Obesity and Metabolism*. 2021;23(9). doi:10.1111/dom.14454
41. Sudre CH, Murray B, Varsavsky T, et al. Attributes and predictors of long COVID. *Nature Medicine*. 2021;27(4). doi:10.1038/s41591-021-01292-y
42. Parker AM, Brigham E, Connolly B, et al. Addressing the post-acute sequelae of SARS-CoV-2 infection: a multidisciplinary model of care. *The Lancet Respiratory Medicine*. 2021;9(11). doi:10.1016/S2213-2600(21)00385-4

## Figures and Tables

Figure 1: Study population from recruitment to follow-up.

Figure 2: Proportion of individuals with Long COVID at baseline and follow-up for: (A) commonly reported symptoms; (B) organ impairment.

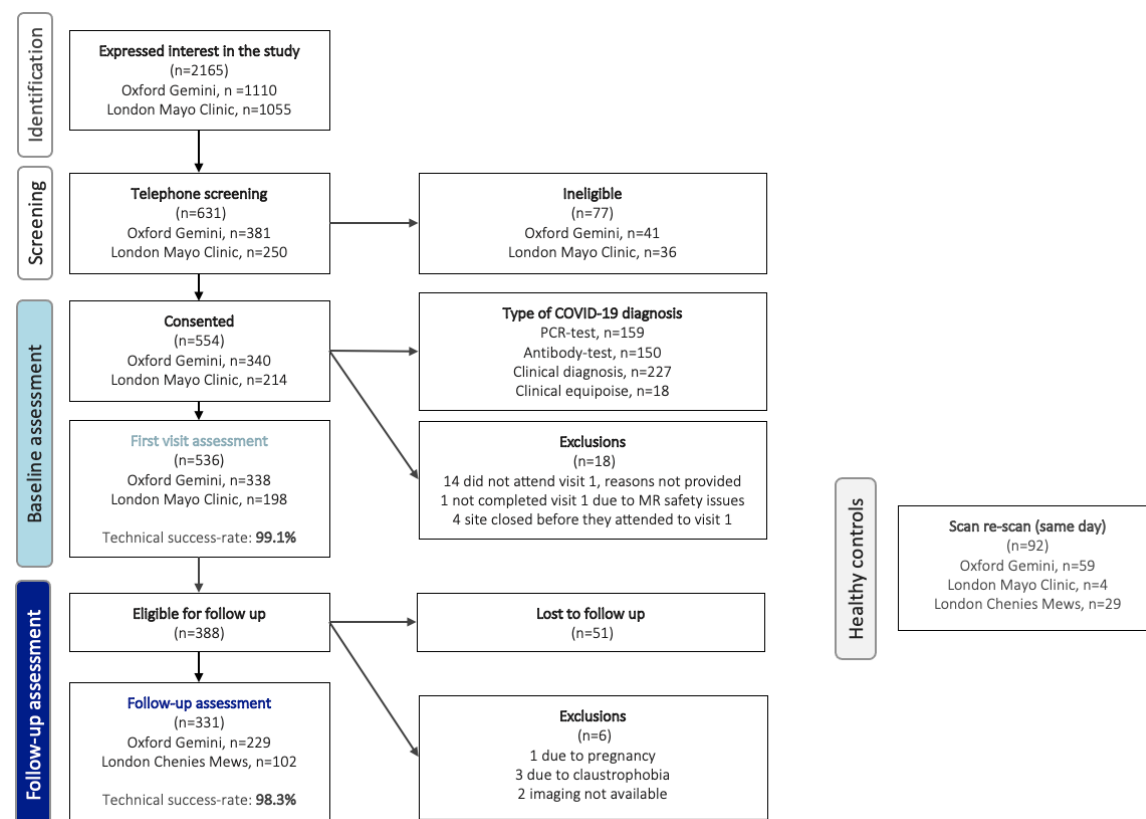
Figure 3: Association between risk factors and: (A) severe breathlessness at baseline; (B) Poor HRQoL at follow-up.

Table 1: Characteristics of patients at baseline and follow-up.

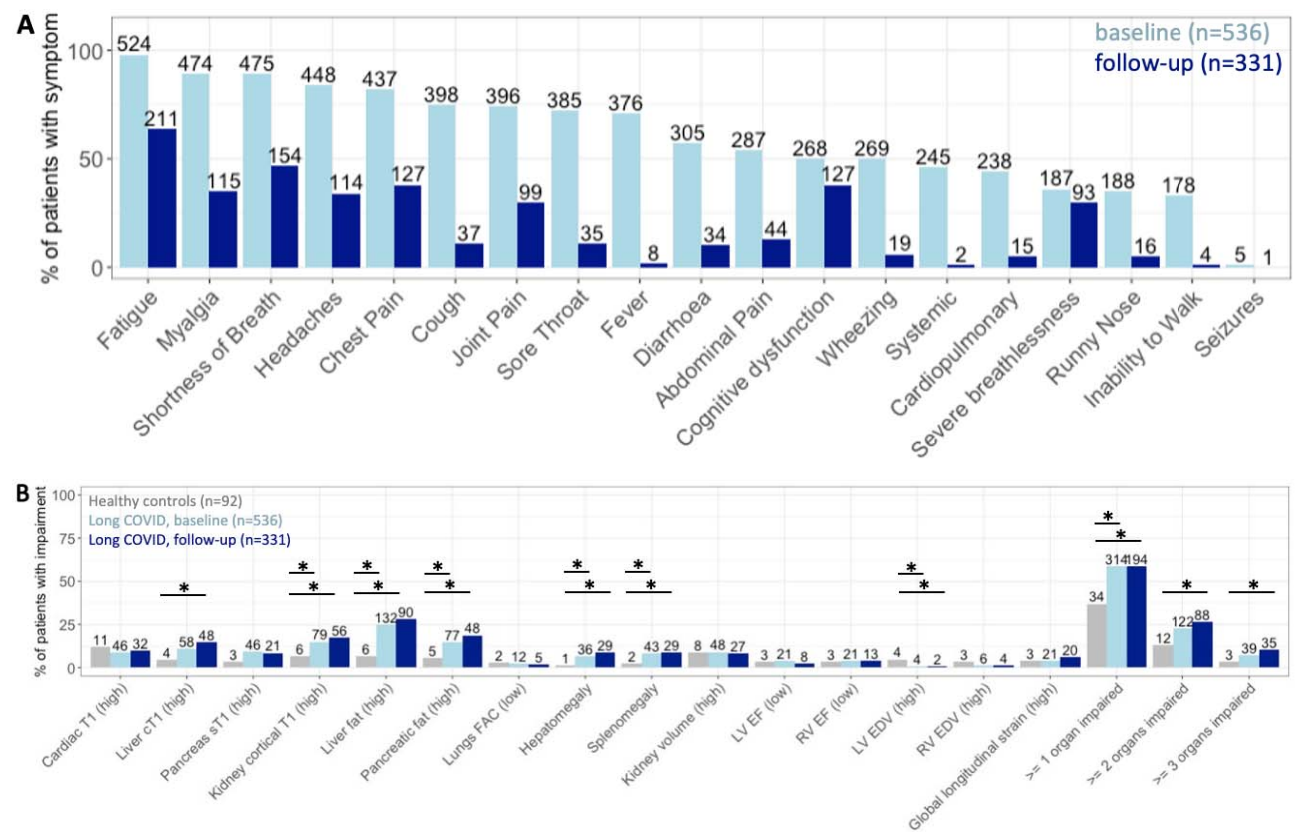
Table 2: Characteristics by symptom status at baseline and follow-up.



**Figure 1: Study population from recruitment to follow-up.**

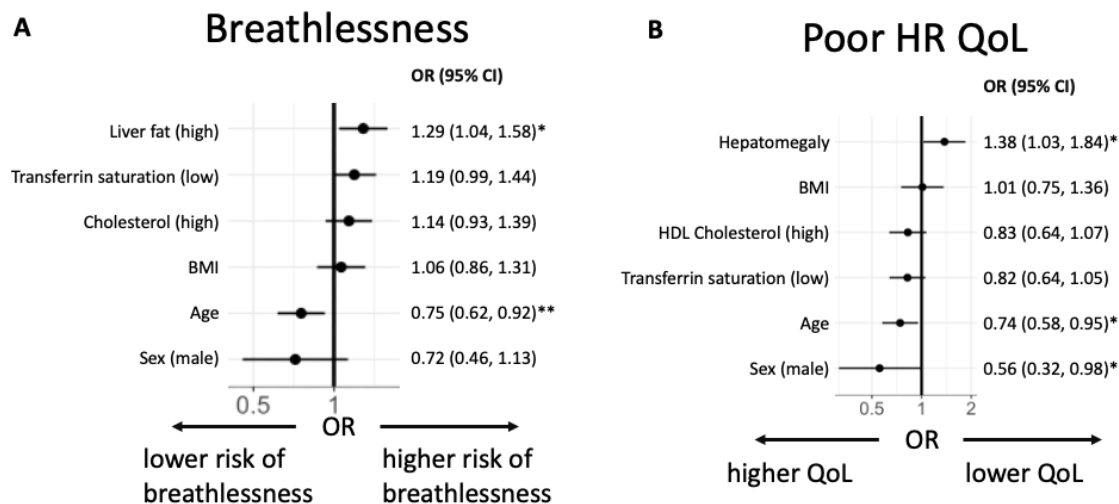


**Figure 2: Proportion of individuals with Long COVID at baseline and follow-up for: (A) symptoms; (B) organ impairment.**



Note for Figure 2B: compared between healthy controls (grey) and at baseline and follow-up (blue). Significant differences ( $p < 0.05$ ) are indicated with a star, numbers above columns indicate the sample size (n) for each group.

**Figure 3: Association between risk factors and: (A) severe breathlessness at baseline; (B) Poor HRQoL at follow-up.**



**Table 1: Characteristics of patients at baseline and follow-up.** P-values represent results from an independent unpaired t-test (or non-parametric equivalent), Fisher's exact test for dichotomous variables and chi-square test for categories.

Characteristic	Baseline (n=536)	Follow-up (n=331)	p-value
Age (years)	45 (11)	47 (11)	0.003
Sex (n females)	389 (73%)	241 (73%)	1
BMI (kg/m <sup>2</sup> )	25 (23, 29)	26 (23,31)	0.03
Ethnicity			0.99
White	477 (89%)	295 (89%)	
Mixed	6 (1%)	3 (1%)	
South Asian	21 (4%)	15 (5%)	
Black	10 (2%)	5 (2%)	0.603
Healthcare worker	172 (32%)	112 (34%)	
At least one COVID-19 vaccination	Not recorded	197 (76%) missing: n=71	
<b>Comorbidities and risks</b>			
Smoking			
Never	349 (65%)	222 (67%)	0.606
Current	14 (3%)	7 (2%)	0.821
Ex-smoker	172 (32%)	102 (31%)	0.707
BMI			
≥25 kg/m <sup>2</sup>	293 (55%)	200 (61%)	0.090
≥30 kg/m <sup>2</sup>	120 (22%)	92 (28%)	0.074
Hypertension	44 (8%)	37 (11%)	0.151
Diabetes	10 (2%)	9 (3%)	0.476
Heart disease	9 (2%)	4 (1%)	0.776
Asthma	101 (19%)	56 (17%)	0.525
Hospitalised during acute COVID-19	72 (13%)	57 (17%)	0.141
Time off work (days)	Not recorded	125 (35, 296)	-
<b>15 common symptoms</b>			
Number reported [median (IQR)]	10 (8, 11)	3 (0, 5)	<0.001
None reported in history	0 (0%)	93 (28%)	<0.001
None reported in history/ questionnaires	0 (0%)	60 (19%)	<0.001
<b>Symptom groups</b>			
Systemic	245 (46%)	2 (1%)	<0.001
Cardiopulmonary	238 (44%)	15 (5%)	<0.001
Severe breathlessness (Dyspnoea 12 ≥10)	187 (36%)	93 (30%)	0.094
Cognitive dysfunction	268 (50%)	127 (38%)	<0.001
Poor HRQoL	281 (55%)	138 (45%)	0.011
None of five symptom groups	66 (13%)	108 (35%)	<0.001
<b>Duration (days: median, [IQR])</b>			
Initial symptoms-to-assessment	182 (132, 222)	384 (350, 431)	-
COVID-19 positive-to-assessment	110 (53, 175)	328 (265, 375)	-

**Table 2: Characteristics by symptom status at baseline and follow-up.** Compared are the baseline characteristics (top part) and the follow-up characteristics (bottom part) between groups.

Characteristic	Persistent symptoms (n=264)	Asymptomatic (n=60)	p-value
<b>Baseline characteristics</b>			
<b>Demographics</b>			
Age (years)	45 (40, 53)	47 (39, 58)	0.33
Female sex (n)	204 (77%)	34 (57%)	<b>0.002</b>
BMI (kg/m <sup>2</sup> )	26 (23, 30)	28 (23, 31)	0.518
White	239 (91%)	49 (82%)	0.066
Mixed	3 (1%)	0 (0%)	>0.999
South Asian	8 (3%)	7 (12%)	<b>0.01</b>
Black	3 (1%)	2 (3%)	0.232
Healthcare worker	89 (34%)	19 (32%)	0.88
<b>Comorbidities and risks</b>			
Never smoked	173 (66%)	40 (67%)	>0.999
Current smoker	4 (2%)	2 (3%)	0.308
Ex-smoker	87 (33%)	18 (30%)	0.76
BMI ≥ 25 kg/m <sup>2</sup>	159 (60%)	38 (63%)	0.77
BMI ≥ 30 kg/m <sup>2</sup>	72 (27%)	18 (30%)	0.75
Hypertension	25 (9%)	6 (10%)	0.813
Diabetes	3 (1%)	4 (7%)	<b>0.024</b>
Asthma	53 (20%)	9 (15%)	0.468
Pre-existing heart disease	3 (1%)	1 (2%)	0.561
Hospitalized during acute COVID-19	46 (17%)	10 (17%)	>0.999
Number of common symptoms reported	10 (9, 11)	9 (7, 10)	<b>&lt;0.001</b>
<b>MRI abnormality</b>			
<b>Liver</b>			
cT1 or fat high	95 (36%)	23 (39%)	0.766
cT1 (high)	36 (14%)	9 (15%)	0.836
cT1 (ms)	727 (681, 770)	715 (680, 768)	0.689
fat (high)	87 (33%)	20 (33%)	>0.999
fat (%)	3 (2, 6)	3 (1, 6)	0.907
Volume (high)	23 (9%)	6 (10%)	0.801
Volume (ml)	1,423 (1,252, 1,693)	1,463 (1,277, 1,653)	0.649
<b>Pancreas</b>			
sT1 or fat high	64 (26%)	14 (24%)	0.868
cT1 high	29 (12%)	7 (12%)	>0.999
sT1 (ms)	720 (686, 772)	722 (684, 767)	0.775
Fat (high)	51 (20%)	12 (20%)	>0.999
Fat (%)	3 (2, 6)	3 (3, 5)	0.287
<b>Kidney</b>			
Cortex T1 (high)	44 (17%)	14 (24%)	0.193
Cortex T1 left 1.5T (ms)	1,080 (1,041, 1,127)	1,084 (1,046, 1,139)	0.344
Cortex T1 right 1.5T (ms)	1,071 (1,028, 1,123)	1,079 (1,042, 1,134)	0.35
Cortex T1 left 3T (ms)	1,423 (1,380, 1,474)	1,398 (1,360, 1,447)	0.228
Cortex T1 right 3T (ms)	1,380 (1,350, 1,457)	1,391 (1,311, 1,433)	0.542
Volume (high)	21 (8%)	7 (12%)	0.318
Volume left (ms)	146 (129, 165)	158 (133, 179)	<b>0.044</b>
Volume right (ms)	146 (128, 166)	150 (137, 172)	0.184
<b>Spleen</b>			
Splenomegaly	28 (11%)	5 (8%)	0.813
Volume (ml)	180 (141, 242)	194 (166, 252)	0.146
<b>Lung</b>			
FAC (low)	7 (3%)	0 (0%)	0.359
FAC (%)	43 (10)	42 (10)	0.814

<b>Heart</b>			
Myocardial injury	53 (20%)	15 (25%)	0.484
T1 (high)	24 (9%)	11 (18%)	0.062
T1 1.5T (ms)	980 (965, 993)	972 (949, 987)	<b>0.047</b>
T1 3T (ms)	1,185 (1,166, 1,199)	1,184 (1,171, 1,214)	0.922
LV EF (low)	13 (5%)	4 (7%)	0.531
LV EF (%)	60 (57, 63)	58 (54, 61)	<b>0.025</b>
RV EF (low)	10 (4%)	4 (7%)	0.302
RV EF (%)	59 (5)	58 (6)	0.108
LV EDV (high)	2 (1%)	0 (0%)	>0.999
LV EDF (ml)	78 (71, 87)	82 (75, 94)	<b>0.009</b>
RV EDV (high)	3 (1%)	0 (0%)	>0.999
RV EDF (ml)	74 (66, 84)	80 (70, 93)	<b>0.005</b>
Global longitudinal strain (high)	11 (4%)	0 (0%)	0.133
Global longitudinal strain (%)	-14 (2)	-14 (2)	0.484
<b>Number of organs impaired on MRI</b>			
0	84 (32%)	17 (28%)	0.646
≥1	180 (68%)	43 (72%)	0.542
≥2	75 (28%)	20 (33%)	0.529
≥3	26 (10%)	7 (12%)	0.632
<b>Follow-up characteristics</b>			
Hospitalized between baseline and follow-up	13 (5%)	1 (2%)	0.48
Time off work (days)	172 (42, 300)	54 (21, 120)	<b>&lt;0.001</b>
<b>MRI abnormality</b>			
<b>Liver</b>			
cT1 or fat high	88 (35%)	17 (28%)	0.447
cT1 (high)	40 (16%)	7 (12%)	0.547
cT1 (ms)	724 (693, 768)	708 (676, 755)	0.15
fat (high)	74 (29%)	16 (27%)	0.754
fat (%)	3 (2, 6)	3 (2, 6)	0.876
Volume (high)	24 (9%)	5 (8%)	>0.999
Volume (ml)	1,427 (1,271, 1,699)	1,474 (1,316, 1,675)	0.429
<b>Pancreas</b>			
sT1 or fat high	43 (22%)	10 (21%)	>0.999
cT1 high	16 (8%)	4 (8%)	>0.999
sT1 (ms)	720 (684, 754)	700 (673, 740)	0.113
Fat (high)	35 (18%)	10 (20%)	0.683
Fat (%)	3 (2, 5)	3 (2, 6)	0.988
<b>Kidney</b>			
Cortex T1 (high)	45 (17%)	9 (15%)	0.848
Cortex T1 left 1.5T (ms)	1,093 (1,047, 1,122)	1,072 (1,047, 1,132)	0.853
Cortex T1 right 1.5T (ms)	1,081 (1,048, 1,114)	1,074 (1,033, 1,130)	0.695
Cortex T1 left 3T (ms)	1,412 (1,370, 1,486)	1,453 (1,402, 1,461)	0.913
Cortex T1 right 3T (ms)	1,406 (1,356, 1,456)	1,398 (1,356, 1,418)	0.602
Volume (high)	21 (8%)	6 (10%)	0.61
Volume left (ms)	145 (127, 165)	158 (137, 180)	<b>0.011</b>
Volume right (ms)	149 (129, 167)	156 (143, 172)	<b>0.028</b>
<b>Spleen</b>			
Splenomegaly	24 (9%)	5 (8%)	>0.999
Volume (ml)	176 (139, 246)	192 (161, 245)	0.074
<b>Lung</b>			
FAC (low)	4 (2%)	0 (0%)	0.58
FAC (%)	44 (11)	45 (10)	0.537

<b>Heart</b>			
Myocardial injury	52 (20%)	16 (28%)	0.214
T1 (high)	25 (9%)	7 (12%)	0.632
T1 1.5T (ms)	982 (969, 992)	975 (960, 987)	0.069
T1 3T (ms)	1,181 (1,165, 1,206)	1,185 (1,172, 1,200)	0.974
LV EF (low)	6 (2%)	1 (2%)	>0.999
LV EF (%)	60 (4)	59 (5)	<b>0.03</b>
RV EF (low)	7 (3%)	5 (8%)	0.05
RV EF (%)	59 (5)	57 (5)	<b>0.018</b>
LV EDV (high)	2 (1%)	0 (0%)	>0.999
LV EDF (ml)	78 (70, 86)	82 (75, 93)	<b>0.013</b>
RV EDV (high)	4 (2%)	0 (0%)	>0.999
RV EDF (ml)	74 (67, 86)	81 (71, 91)	<b>0.017</b>
Global longitudinal strain (high)	15 (6%)	5 (9%)	0.389
Global longitudinal strain (%)	-15 (2)	-14 (2)	<b>0.022</b>
<b>Number of organs impaired on MRI</b>			
0	112 (42%)	23 (38%)	0.664
≥1	152 (58%)	37 (62%)	0.664
≥2	73 (28%)	13 (22%)	0.419
≥3	28 (11%)	5 (8%)	0.813