

1 **Genomic Epidemiology of SARS-CoV-2 in Seychelles, 2020-2021**

2

3 **Authors :** John Mwita Morobe¹, Brigitte Pool², Lina Marie², Dwayne Didon², Arnold
4 W. Lambisia¹, Timothy Makori¹, Khadija Said Mohammed¹, Zaydah R. de Laurent¹,
5 Leonard Ndwiga¹, Maureen W. Mburu¹, Edidah Moraa¹, Nickson Murunga¹, Jennifer
6 Musyoki¹, Jedida Mwacharo¹, Lydia Nyamako¹, Debra Riako¹, Pariken Ephnatus¹,
7 Faith Gambo¹, Josephine Naimani¹, Joyce Namulondo^{3,4}, Susan Zimba Tembo³,
8 Edwin Ogendi³, Thierno, Balde⁵, Fred Athanasius Dratibi⁵, Yahaya Ali Ahmed⁵,
9 Nicksy Gumede⁵, Rachel A. Achilla⁵, Peter K. Borus⁶, Dorcas Wanjohi⁷, Sofonias K.
10 Tessema⁷, Joseph Mwangangi¹, Philip Bejon¹, D. James Nokes^{1,8}, Lynette Isabella
11 Ochola-Oyier¹, George Githinji^{1,9}, Leon Biscornet², Charles N. Agoti^{1,10}

12

13 **Author Affiliations**

14 ¹Kenya Medical Research Institute - Wellcome Trust Research Programme
15 (KWTRP), Kilifi, Kenya.

16 ²Seychelles Public Health Laboratory, Public Health Authority, Ministry of Health,
17 Seychelles.

18 ³ World Health Organization-Seychelles Country Office

19 ⁴Department of Arbovirology, Emerging and Re-emerging Infectious Diseases -
20 Uganda Virus Research Institution (UVRI), Entebbe, Uganda

21 ⁵ World Health Organization Regional Center for Africa

22 ⁶ World Health Organization-Kenya Country Office

23 ⁷Africa Centres for Disease Control and Prevention (Africa CDC), Addis Ababa,
24 Ethiopia.

25 ⁸University of Warwick, Coventry, United Kingdom.

26 ⁹Department of Biochemistry and Biotechnology, Pwani University, Kilifi, Kenya

27 ¹⁰Department of Public Health, Pwani University, Kilifi, Kenya.

28

29 **Corresponding author :** jmwita@kemri-wellcome.org

30

31 **Key words:** Seychelles, SARS-CoV-2, Variants of concern

32 **ABSTRACT**

33 Seychelles, an archipelago of 155 islands in the Indian Ocean, had confirmed
34 24,788 cases of severe acute respiratory syndrome coronavirus 2 (SARS-CoV-2) by
35 the 31st December 2021. The first SARS-CoV-2 cases in Seychelles were reported
36 on the 14th of March 2020, but cases remained low until January 2021, when a surge
37 of SARS-CoV-2 cases was observed on the islands. Here, we investigated the
38 potential drivers of the surge by genomic analysis 1,056 SARS-CoV-2 positive
39 samples collected in Seychelles between 14th March 2020 and 31st December 2021.
40 The Seychelles genomes were classified into 32 Pango lineages, 1,042 of which fell
41 within four variants of concern i.e., Alpha, Beta, Delta and Omicron. Sporadic cases
42 of SARS-CoV-2 detected in Seychelles in 2020 were mainly of lineage B.1
43 (European origin) but this lineage was rapidly replaced by Beta variant starting
44 January 2021, and which was also subsequently replaced by the Delta variant in
45 May 2021 that dominated till November 2021 when Omicron cases were identified.
46 Using ancestral state reconstruction approach, we estimated at least 78 independent
47 SARS-CoV-2 introduction events into Seychelles during the study period. Majority of
48 viral introductions into Seychelles occurred in 2021, despite substantial COVID-19
49 restrictions in place during this period. We conclude that the surge of SARS-CoV-2
50 cases in Seychelles in January 2021 was primarily due to the introduction of more
51 transmissible SARS-CoV-2 variants into the islands.

52 **BACKGROUND**

53 Seychelles, an archipelago of 155 islands in the Indian Ocean with a
54 population size of approximately 99,202¹, confirmed its first cases of severe acute
55 respiratory syndrome coronavirus 2 (SARS-CoV-2), the aetiological agent of
56 coronavirus disease 2019 (COVID-19), on the 14th March 2020. This was shortly
57 after the World Health Organisation (WHO) declared COVID-19 a global pandemic
58 on the 11th March 2020. However, the number of COVID-19 cases in Seychelles
59 remained low (average of 1 case/day) until January 2021 when a surge was
60 observed in the country (average of 72 cases/day). As of 31st December 2021,
61 Seychelles had reported 24,788 laboratory-confirmed COVID-19 cases, >98% of
62 which were recorded in 2021². The surge of the number of COVID-19 cases in
63 Seychelles in 2021 could be due to 2 major factors: (a) the relaxation of government
64 COVID-19 stringency measures and (b) the arrival of more transmissible SARS-
65 CoV-2 variants on the islands. Our analysis looked at these factors in an attempt to
66 improve understanding of the COVID-19 transmission dynamics in Seychelles.

67 The first round of COVID-19 countermeasures by the Seychelles government
68 to curb introductions and spread of the virus were announced in March 2020. These
69 measures included: a 14-day quarantine for people returning from countries with
70 significant COVID-19 community transmission on the 16th March 2020, closure of
71 day care centres and learning institutions, and ban on international arrivals and
72 foreign travel by Seychellois citizens, except for medical emergencies beginning 23rd
73 March 2020, a 21-day nationwide lockdown, tracing, isolation and monitoring of all
74 persons who had close contact with COVID-19 patients for 14 days beginning 6th
75 April 2020, closure of all shops except those that sell food items, groceries,
76 pharmaceutical products beginning 6th April 2020, workplace closures and restriction
77 of outdoor movement except for essential services on 9th April. On the 4th of May
78 2020, the Seychelles government eased some of the COVID-19 restrictions,
79 including opening of all day care and learning institutions, opening of all shops, and
80 lifting of the ban on restrictions of movement of people. In June 2020, the Seychelles
81 government lifted the ban on international travel and allowed visitors (international
82 tourists) from countries categorised as low-risk countries, however with a
83 requirement to show a COVID-19 negative certificate (RT-PCR test). Despite this
84 removal of many of the Government restrictions, the number of SARS-CoV-2 cases
85 in Seychelles throughout 2020 remained low.

86 Towards the end of 2020 and in 2021, in widely different geographical
87 locations, five SARS-CoV-2 variants of concern (VOC) - Alpha, Beta, Gamma, Delta
88 and Omicron, five variants of variants of interest (VOI) – Eta, Kappa, Iota, Epsilon
89 and Theta and over 10 variants under monitoring (VUM) - emerged that appeared to
90 be considerably more transmissible and with potential to escape pre-existing
91 immunity^{3,4}. Notably, the surge of COVID-19 cases in Seychelles in early 2021
92 coincided with their emergence. Further, in the last quarter of 2021, the Omicron
93 SARS-CoV-2 variants of concern (VOCs) was detected globally⁴. The emergence
94 and spread of these variants of concern globally, has exacerbated the effect of the
95 COVID-19 pandemic⁵. The objective of this study was to describe the genomic
96 epidemiology of SARS-CoV-2 in Seychelles and in particular lineages coinciding with
97 the surge of cases that began in January 2021, with the aim of improving the
98 understanding on the introduction and transmission of SARS-CoV-2 in Seychelles.

99

100 **MATERIALS AND METHODS**

101

102 **Ethical statement**

103 The SARS-CoV-2 positive samples were sequenced at the Kenya Medical
104 Research Institute (KEMRI) - Wellcome Trust Research Programme (KWTRP) as
105 part of a regional collaborative COVID-19 public health rapid response initiative
106 overseen by WHO-AFRO and Africa-CDC. KWTRP Kilifi is one of the 12 designated
107 WHO-AFRO/Africa-CDC regional reference laboratories for SARS-CoV-2 genomic
108 surveillance in Africa. The whole genome sequencing study protocol was reviewed
109 and approved by the Scientific and Ethics Review Committee (SERU) at KEMRI,
110 (SERU #4035). Individual patient consent requirement was waived by the
111 committee as the sequenced samples were part of the public health emergency
112 response.

113

114 **Study site and samples**

115 A total of 1,298 SARS-CoV-2 real-time polymerase chain reaction (qRT-
116 PCR)-confirmed nasopharyngeal and oropharyngeal (NP/OP) positive swab samples
117 collected between 14th March 2020 and 31st December 2021 were targeted for whole
118 genome sequencing. The samples received for sequencing at KWTRP for whole
119 genome sequencing were selected considering cycle threshold (Ct) value cut off

120 <30. The monthly temporal distribution of samples selected for whole genome
121 sequencing is shown in **Supplementary Figure 1**.

122

123 **Laboratory procedures**

124 **RNA extraction, cDNA synthesis and amplification**

125 The NP/OP swab samples on arrival at KWTRP laboratories were re-
126 extracted using the QIAamp Viral RNA Mini Kit (Qiagen, Manchester, UK) following
127 the manufacturer's instructions, starting volume 140 µl, and elution volume of 60 µl.
128 The RNA was then re-assayed to confirm SARS-CoV-2 genetic material using one of
129 three commercial kits namely, Da An Gene Co. Ltd.'s Detection Kit (targeting N gene
130 or ORF1ab), SD Biosensor's Standard M Real Time Detection Kit (targeting E gene
131 and ORF1ab) or KH Medical's RAD1 COVID-19 Detection Kit (targeting RdRp and S
132 genes) while following manufacturer's instructions. Samples with Ct values <33 were
133 selected for cDNA synthesis.

134 Extracted RNA was reverse transcribed using the LunaScript® RT SuperMix
135 Kit (New England Biolabs, US). For each of the selected sample, 2 µl of the
136 LunaScript® RT SuperMix was added to 8 µl of RNA template, incubated at 25°C for
137 2 minutes, 55°C for 10 minutes, held at 95°C for 1 minute and placed on ice for 1
138 minute. The generated viral cDNA was amplified using the Q5® Hot Start High-
139 Fidelity 2X Master Mix (NEB, US) along with ARTIC nCoV-2019 version 3 primers
140 (primer pools A and B), as documented previously⁶. The thermocycling conditions
141 involved a touchdown PCR with the following conditions: heat activation at 98°C for
142 30 seconds, followed by 40 amplification cycles (i.e., 25 cycles of 98°C for 15
143 seconds and 65°C for 5 minutes, and 15 cycles of 62.5°C for 5 minutes and 98°C for
144 15 seconds and one cycle at 62.5°C for 5 minutes), final extension at 62.5°C for 5
145 minutes, followed by a final hold at 4°C. To overcome amplicon dropouts in regions
146 3, 9, 17, 26, 64, 66, 67, 68, 74, 88, 91 and 92 of the genomes⁶, primer pairs for the
147 aforementioned regions were constituted in an additional pool, named herein pool C.
148 After the multiplex PCR, an agarose gel electrophoresis step was included to
149 exclude samples with no visible bands from further processing.

150 **Oxford Nanopore library preparation and sequencing**

151 For each sample, the PCR products of primer pools A, B and C were
152 combined to make a total of 23µl (all of pool A (10µl), pool B (10µl) and pool C(3µl))

153 and cleaned using 1x AMPure XP beads (Beckman Coulter, US), followed by two
154 ethanol (80%) washes. The pellet was resuspended in 20 µl nuclease-free water and
155 1 µl of the eluted sample was quantified using the Qubit dsDNA HS Assay Kit
156 (ThermoFisher Scientific, US). End-prep reaction was performed according to the
157 ARTIC nCoV-2019 sequencing protocol v3 (LoCost) with 200 fmol (50ng) of
158 amplicons and the NEBNext Ultra II End repair/dA-tailing Kit (NEB, US) and
159 incubated at 20°C for 5 minutes and 65°C for 5 minutes. From this, 1µl of DNA was
160 used for barcode ligation using Native Barcoding Expansion 96 (Oxford Nanopore
161 Technology, UK) and NEBNext Ultra II Ligation Module reagents (NEB, US).
162 Incubation was performed at 20°C for 20 minutes and at 65°C for 10 minutes. This
163 step was eventually modified to employ NEBNext Blunt/TA Ligase Master Mix (NEB,
164 US) using the same barcodes and incubation conditions.

165 The barcoded samples were pooled together. The pooled and barcoded DNA
166 samples were cleaned using 0.4X AMPure XP beads followed by two ethanol (80%)
167 washes and eluted in a 1/14 of the original volume of nuclease-free water. Adapter
168 ligation was performed using 50-100 ng of the barcoded amplicon pool, NEBNext
169 Quick Ligation Module reagents (NEB, US) and Adaptor Mix II (ONT, UK), and
170 incubated at room temperature for 20 minutes. Final clean-up was performed using
171 1X AMPure XP beads and 125 µl of Short Fragment Buffer (ONT, UK). The library
172 was eluted in 15 µl Elution Buffer (ONT, UK). The final library was normalised to 15-
173 70 ng, loaded on a SpotON R9 flow cell and sequenced on a MinION Mk1B or
174 GridION device⁶.

175

176 **SARS-CoV-2 genome consensus assembly**

177 The data generated via the MinION and GridION devices were processed
178 using the ARTIC bioinformatic protocol ([https://artic.network/ncov-2019/ncov2019-
179 bioinformatics-sop.html](https://artic.network/ncov-2019/ncov2019-bioinformatics-sop.html)). In brief, raw FAST5 files were base called and
180 demultiplexed using ONT's Guppy (version 4.0.5) in high accuracy mode using a
181 minimum Q score of 7. FASTQ reads between 300 bps and 750 bps were filtered
182 using the guppyplex module. The consensus sequences were generated by aligning
183 base called reads against the SARS-CoV-2 reference genome (GenBank accession
184 MN908947.3) using MiniMap2⁷. All positions with a genome coverage of less than 20
185 reads were masked with Ns. The consensus sequences were then polished using
186 Nanopolish toolkit (version 0.13.3) using the raw signals.

187 **Lineage and VOC assignment**

188 Additional quality control, clade assignment and mutation profiles were
189 obtained using the NextClade tool v1.13.2⁸ using a SARS-CoV-2 reference genome
190 (accession NC_045512). All consensus sequences with a genome coverage >70%
191 were classified using the PANGO lineage assignment tool (Pangolin version 3.1.20
192 and PangoLearn v.02/02/2022)⁹.

193

194 **Global comparison sequences**

195 Seychelles sequences were analysed against a backdrop of globally
196 representative SARS-CoV-2 lineages. To ensure global representation of
197 sequences, we downloaded all the sequences (n= 8,916,634) from the Global
198 Initiative on Sharing All Influenza Data (GISAID) database collected before 31st
199 December and used an in-house R script to randomly select a sub-sample of 5,179
200 genomes while considering Pango lineage (lineages detected in Seychelles only),
201 continent and date of collection. These global random genomes were collected from
202 150 countries and territories between 2nd May 2020 and 31st December 2021.

203

204 **Phylogenetic reconstruction**

205 The retrieved global sequence dataset, the sequences from Seychelles were
206 aligned using Nextalign version 1.4.1. against the reference SARS-CoV-2 genome
207 (accession NC_045512). A maximum likelihood (ML) phylogeny was inferred using
208 IQTREE version 2.1.3 (<http://www.iqtree.org/>). The software initiates tree
209 reconstruction after assessment and selection of the best model of nucleotide
210 substitution for the alignment. TreeTime version 0.8.1 was used to transform the ML
211 tree topology into a time calibrated phylogenetic tree. The resulting trees were
212 visualized using the Bioconductor ggTree version 2.2.4 package¹⁰ in R¹¹.

213

214 **Estimation of virus importations and exportations into Seychelles**

215 The global ML tree topology was used to estimate the number of viral
216 transmission events between Seychelles and the rest of the world as described
217 previously¹². TreeTime was used to transform the ML tree topology into a dated
218 phylogenetic tree. Outlier sequences (n=208) were identified by TreeTime and
219 excluded during this process. A migration model was fitted using the time-scaled
220 phylogenetic tree, mapping the location status of the genomes from Seychelles at

221 both the tips and internal nodes. Using the date and location annotated tree
222 topology, we counted the number of transitions between Seychelles and the rest of
223 the world and plotted this using ggplot2 version 3.3.3¹³.

224

225 **Statistical analysis**

226 All statistical analyses were performed using R version 4.1.0¹¹ .

227 RESULTS

228 Sequenced COVID-19 cases in Seychelles

229 The rise of COVID-19 cases in 2021 was preceded by a period of relaxed
230 countermeasures to curb the spread of the virus (**Figure 1 A and B**). Of 1,298 SARS-
231 CoV-2 positive samples received at KWTRP for genome sequencing, near complete
232 genomes (>70% genome coverage) were recovered from 1,056 samples, and these
233 were used in the subsequent lineage and phylogenetic analysis (**Supplementary**
234 **Figure 2**). A summary of the demographic details for the samples successfully
235 sequenced and those that failed are provided in **Table 1**.

236

237 SARS-CoV-2 lineages circulating in Seychelles

238 The recovered 1,056 genomes were classified into 32 distinct Pango lineages,
239 28 of which occurred within VOC, VOI or VUM: Alpha VOC (n=1), Beta VOC (n=1),
240 Delta VOC (n=21) and Omicron VOC (n=3) and Kappa VOI (n=1) and B.1.640.2
241 VUM (n=1) (**Table 2**). A total of four non-VOC/non-VOI/non-VUM lineages were
242 detected among the sequenced infections in Seychelles: B.1 (n=9), B.1.1 (n=1),
243 B.1.1.50 (n=1) and lineage B.1.1.277 (n=1). Lineage B.1 (predominantly detected in
244 Europe) was the first lineage to be detected in Seychelles, in a sequenced sample
245 from June 2020, followed by lineage B.1.1.277 (predominantly detected in Europe) in
246 October 2020, B.1.1.50 (Predominantly detected in Israel and Palestine) in January
247 2021 followed by B.1.1 in May 2021. The non-VOC/VOI lineages were replaced by
248 the Beta VOC (B.1.351) in February 2021, and which was later subsequently
249 replaced by the Delta VOC in May 2021 that dominated until November 2021 when
250 Omicron cases were first identified (**Figure 1C and Figure 2**).

251 Detection of Beta VOC in February 2021 coincided with the start of a surge of
252 COVID-19 cases, with a further sharp surge observed in May 2021 coinciding with
253 detection of Delta VOC in May 2021 (**Figure 1B and C**). Since the emergence of
254 Delta VOC in Seychelles in May 2021, a total of 21 Delta VOC lineages co-circulated
255 with varying frequency. Lineage AY.122 (n= 742) was the most prevalent, with
256 detections until the end of the surveillance period covered in this analysis (**Figure 1D**
257 **and Figure 2**). Other common Delta lineages were AY.43 (n=33) and B.1.617.2
258 (n=13). We observed the start of another surge in November 2021 due to Omicron

259 (lineages BA.1 (n=126), BA.1.1 (n=18) and BA.2 (n=1) (**Figure 1B and**
260 **Supplementary Figure 1A**) which peaked in mid-January 2022 (not shown).

261

262 **SARS-CoV-2 diversity in Seychelles**

263 Genetic distance-resolved phylogeny of the Seychelles genomes, including
264 global reference sequences (n=5,179) revealed that most of the Seychelles
265 sequences were interspersed as clusters (>2 sequences) or singletons across the
266 phylogenetic trees suggesting multiple viral introductions into Seychelles (**Figure 3**).
267 In the VOC/non-VOC-specific phylogenies, Delta VOC (n=863) grouped into 14
268 clusters (>2 sequences) clusters and 12 singletons on the global phylogenetic tree
269 pointing to separate introductions of the Delta VOC into the country whereas
270 Omicron VOC (n=145) clustered into 10 clusters and 11 singletons (**Figures 3D and**
271 **E**). Seychelles' Beta (n=29) and Alpha (n=5) viruses clustered closely amongst
272 themselves suggesting few introductions that led to onward transmission in
273 Seychelles (**Figures 3B and C**). Seychelles B.1 viruses sampled in 2020 were
274 dispersed on the global phylogeny as singletons most likely pointing to multiple
275 introductions into Seychelles during the initial phase of the pandemic (**Figure 3A**).
276 Sequences from different locations (i.e., districts) in Seychelles clustered closely or
277 together on the phylogenetic tree, a feature suggesting rapid spread of the virus
278 within the country over a short period of time (not shown).

279 SARS-CoV-2 variant analysis comparing sequences from Seychelles'
280 sequences to the Wuhan reference sequence (NC_045512.2) detected a total of 703
281 amino acid mutations across different gene regions; however, focusing on the
282 frequent occurring mutations only, we identified a total of 27 amino acid mutations
283 and two deletions that had a prevalence of >50% in the sequenced cases
284 (**Supplementary Figure 3A and B**). The most prevalent amino acid mutation was
285 D614G (A23403G) (98.9%) occurring in the spike glycoprotein followed by P314L
286 (C14408T) (93.3%) in the open reading frame 1b (ORF1b) (**Supplementary Figure**
287 **3A**).

288

289 **Export and import of SARS-CoV-2 lineages in Seychelles**

290 Ancestral location state reconstruction of the dated global phylogeny (**Figure**
291 **4A**) was used to infer the number of viral importations and exportations. In total,
292 between the 25th June 2020 and the 31st December 2021, we inferred at least 78

293 importations into Seychelles with 28 (35%) of the introductions coming from Europe,
294 21 separate introductions from Africa, 15 separate introductions from Asia, 6
295 introductions from North America, 5 separate introductions from Oceania and 3
296 introductions from South America. **(Figure 4B)**. Of the 78 detected viral imports into
297 Seychelles, 66 occurred between January and December 2021 after the rise in
298 COVID-19 cases was experienced in the Seychelles **(Figure 4C)**. From the analysis,
299 we also inferred 32 export events from Seychelles to the rest of the world, mainly
300 Asia (n=10) Europe (n=8) and Africa (n=6).

301

302 **DISCUSSION**

303 We estimated at least 78 independent introductions of SARS-CoV-2 into
304 Seychelles between 25th June 2020 to 31st December 2021, with the importations
305 likely originating from all the continents in the world. Notably, the surge of COVID-19
306 cases from January to December 2021 was characterised by detections of VOCs in
307 the country. The Beta variant of concern was the dominant strain in circulation from
308 February to April 2021 and probably responsible for the surge in cases in January
309 2021 (highest daily number of infections at 231, on the 4th March 2021), but the
310 introduction and rapid spread of the Delta variant seen from May to December 2021
311 caused a further surge (highest daily number of infections at 484, on the 6th May
312 2021).

313 The low number of cases detected for non-VOCs (B.1, B.1.1, B.1.1.50 and
314 B.1.1.277) lineages in 2020, could be explained by the fact that this insular
315 population experienced very low importations due to the COVID-19 restriction
316 countermeasures that were in place in 2020 but also that the non-VOCs were not
317 highly transmissible. We ascertain that the introduction of the VOCs with high
318 transmissibility was probably the cause of the surge of cases in Seychelles in 2021.
319 However, these assertions should be taken with caution since extensive genomic
320 surveillance in the country began in early 2021. To note, the detection of VOCs in
321 the country preceded period of relaxed COVID-19 restriction countermeasures,
322 including allowing tourists into the country and the resumption of in person school
323 classes. This may have led to increased viral importations, as detected in our
324 dataset, and to spread in the country.

325 The detection of Delta VOCs in May 2021 coincided with a period of relaxed
326 COVID-19 restriction countermeasures (Oxford stringency index < 50) and the surge
327 of cases during this time may have been due to multiple introductions and rapid
328 spread of the virus in the country. By December, a total of 21 different Delta lineages
329 were detected in Seychelles. The first Omicron detection in Seychelles was on the
330 29th of November 2021. By 31st December 2021, three Omicron lineages had been
331 detected in Seychelles including BA.2 which has been noted to be rapidly growing
332 across the world¹⁴⁻¹⁶

333 Unsurprisingly, the majority of the Seychelles sequences harboured important
334 spike mutations e.g., D614G mutation occurring in 98.2% of all the sequenced
335 cases. The D614G amino acid change has been associated with stronger interaction
336 between the virus and the angiotensin-converting enzyme 2 (ACE2) affinity, leading
337 to higher infectivity and transmissibility^{17,18}. Other important mutations included : i.
338 Beta VOC; K417N, E484K and N501Y occurring in the spike receptor binding
339 domain (RBD), which have been associated with reduced sensitivity to convalescent
340 and post-vaccination sera¹⁹; ii. Delta VOC, L452R, P681R and D950N mutations,
341 which have been linked to reduced sensitivity to neutralizing antibodies and higher
342 transmissibility²⁰; iii. Alpha VOC; N501Y and P681H mutations and iv. Omicron
343 VOC: Q498R and N501Y occurring in the RBD have been linked to ACE2 binding
344 affinity²¹. These RBD mutations coupled with four amino acid substitutions (i.e.,
345 A67V, T95I, and L212) and three deletion (67-70, 142-144 and 211) and an
346 insertion (EPE at position 214) in the N-terminal domain (NTD) are linked to reduced
347 sensitivity of Omicron to reduced sensitivity to convalescent and post-vaccination
348 sera^{22,23}. A cluster of three mutations occurring at S1-S2 furin cleavage site (H655Y,
349 N679K and P681H) have been associated with increased transmissibility²⁴.

350 Our phylogenetic analysis showed that Seychelles sequences virus diversity
351 was nested within the global virus diversity (i.e., Seychelles sequences clustered
352 with sequences sampled from different countries, suggestive of global spread of
353 SARS-CoV-2 lineages). The close association between the viruses and those from
354 other countries reflects global transmission of the virus as a result of global
355 migration, increased connectivity, and social mixing. Further, focusing on the VOCs,
356 we observed patterns of SARS-CoV-2 viral diversity inside Seychelles; phylogenetic

357 clusters consisted of viruses which were derived from different geographic locations
358 and formed a deep hierarchical structure, indicating an extensive and persistent
359 nation-wide transmission of the virus.

360 Our findings are consistent with findings from Island countries such as
361 Comoros, Reunion and New Zealand, where these countries were able to contain
362 the first pandemic wave starting in March 2020, due COVID-19 strict
363 countermeasures such as ban on international arrivals, which may have led to
364 limited viral introductions into the islands, or perhaps viral introductions during the
365 early phase of the pandemic did not results to community transmission due to
366 government countermeasure on COVID-19 such as countrywide lockdown or self-
367 isolation of the entire population^{25,26}. Surge of COVID-19 cases in Islandic
368 populations appears to be majorly driven by introductions of VOCs. For example,
369 Comoros seems to have experienced its first surge of COVID-19 cases after
370 introduction of Beta VOCs into the population in January 2021²⁷, similar to the period
371 when Seychelles saw its first surge also due Beta VOC.

372 This study had some limitations. First, our import/export inferences can be
373 influenced by sampling biases and the low rate of sequencing in Seychelles.
374 Therefore, the true number of international introductions are likely significantly higher
375 than what is reported here. Second, incomplete metadata for some samples limited
376 the scope of our analysis, for example, lack of location of samples collected
377 disallowed us to investigate the transmission pathway of viruses within the country.
378 Third, SARS-CoV- 2 sequences from Seychelles are only available from a very small
379 fraction of the number of confirmed cases into the country.

380 These data reinforce the importance of genomic surveillance in Seychelles as
381 a tool for monitoring and providing real-time information on spread of emerging
382 SARS-CoV-2 variants in the population with important implications for public health
383 and immunization strategies. Surge of COVID-19 cases due to VOCs during a period
384 of heightened COVID-19 countermeasures raises questions on the optimal timing of
385 the introduction of public health interventions. When the interventions are introduced
386 after a surge has started, it is often too late, and the control strategies should focus
387 on local transmission to understand characteristics and origins of locally circulating
388 SARS-CoV-2 diversity to prevent further spread²⁸. Moreover, studies on genomic

389 surveillance would also be useful in investigating vaccine effectiveness against
390 circulating variants which appear to have a high turnover.

391 REFERENCES

392

- 393 1. National Bureau of Statistics S. Population and Vital Statistics. Mid 2021
394 Population Estimates. Published August 31, 2021. Accessed March 29, 2022.
395 [https://www.nbs.gov.sc/downloads/data-acquisition-census/population-and-](https://www.nbs.gov.sc/downloads/data-acquisition-census/population-and-vital-statistics/2021)
396 [vital-statistics/2021](https://www.nbs.gov.sc/downloads/data-acquisition-census/population-and-vital-statistics/2021)
- 397 2. WHO. WHO Coronavirus (COVID-19) Dashboard.
- 398 3. Centres for Disease Control and Prevention. SARS-CoV-2 Variant
399 Classifications and Definitions.
- 400 4. WHO. Tracking SARS-CoV-2 variants. Published 2021. Accessed August 27,
401 2021. <https://www.who.int/en/activities/tracking-SARS-CoV-2-variants/>
- 402 5. Tao K, Tzou PL, Nouhin J, et al. The biological and clinical significance of
403 emerging SARS-CoV-2 variants. *Nature Reviews Genetics*. 2021;22(12):757-
404 773. doi:10.1038/s41576-021-00408-x
- 405 6. Tyson JR, James P, Stoddart D, et al. Improvements to the ARTIC multiplex
406 PCR method for SARS-CoV-2 genome sequencing using nanopore. *bioRxiv*.
407 Published online September 4, 2020:2020.09.04.283077.
408 doi:10.1101/2020.09.04.283077
- 409 7. Li H. Minimap2: pairwise alignment for nucleotide sequences. *Bioinformatics*.
410 2018;34(18):3094-3100. doi:10.1093/bioinformatics/bty191
- 411 8. Hadfield J, Megill C, Bell SM, et al. Nextstrain: real-time tracking of pathogen
412 evolution. *Bioinformatics*. 2018;34(23):4121-4123.
413 doi:10.1093/bioinformatics/bty407
- 414 9. O'Toole Á, Scher E, Underwood A, et al. Assignment of epidemiological
415 lineages in an emerging pandemic using the pangolin tool. *Virus Evolution*.
416 2021;7(2):veab064. doi:10.1093/ve/veab064
- 417 10. Yu G, Smith DK, Zhu H, Guan Y, Lam TTY. ggtree: an r package for
418 visualization and annotation of phylogenetic trees with their covariates and
419 other associated data. *Methods in Ecology and Evolution*. 2017;8(1):28-36.
420 doi:<https://doi.org/10.1111/2041-210X.12628>
- 421 11. R Core Team. R: A language and environment for statistical computing.
422 Published online 2013. Accessed November 9, 2021. URL [http://www.R-](http://www.R-project.org/)
423 [project.org/](http://www.R-project.org/)

- 424 12. Eduan W, Marta G, Houriiyah T, et al. A year of genomic surveillance reveals
425 how the SARS-CoV-2 pandemic unfolded in Africa. *Science* (1979).
426 2021;374(6566):423-431. doi:10.1126/science.abj4336
- 427 13. Hadley Wickham. *Ggplot2: Elegant Graphics for Data Analysis*. Springer-
428 Verlag; 2016.
- 429 14. Yamasoba D, Kimura I, Nasser H, et al. Virological characteristics of SARS-
430 CoV-2 BA.2 variant. *bioRxiv*. Published online January 1,
431 2022:2022.02.14.480335. doi:10.1101/2022.02.14.480335
- 432 15. Lyngse FP, Kirkeby CT, Denwood M, et al. Transmission of SARS-CoV-2
433 Omicron VOC subvariants BA.1 and BA.2: Evidence from Danish Households.
434 *medRxiv*. Published online January 1, 2022:2022.01.28.22270044.
435 doi:10.1101/2022.01.28.22270044
- 436 16. Iketani S, Liu L, Guo Y, et al. Antibody Evasion Properties of SARS-CoV-2
437 Omicron Sublineages. *bioRxiv*. Published online January 1,
438 2022:2022.02.07.479306. doi:10.1101/2022.02.07.479306
- 439 17. Zhang L, Jackson CB, Mou H, et al. SARS-CoV-2 spike-protein D614G
440 mutation increases virion spike density and infectivity. *Nature*
441 *Communications*. 2020;11(1):6013. doi:10.1038/s41467-020-19808-4
- 442 18. Ozono S, Zhang Y, Ode H, et al. SARS-CoV-2 D614G spike mutation
443 increases entry efficiency with enhanced ACE2-binding affinity. *Nature*
444 *Communications*. 2021;12(1):848. doi:10.1038/s41467-021-21118-2
- 445 19. McCormick KD, Jacobs JL, Mellors JW. The emerging plasticity of SARS-CoV-
446 2. *Science* (1979). 2021;371(6536):1306 LP - 1308.
447 doi:10.1126/science.abg4493
- 448 20. Motozono C, Toyoda M, Zahradnik J, et al. SARS-CoV-2 spike L452R variant
449 evades cellular immunity and increases infectivity. *Cell Host & Microbe*.
450 Published online 2021. doi:<https://doi.org/10.1016/j.chom.2021.06.006>
- 451 21. Zahradnik J, Marciano S, Shemesh M, et al. SARS-CoV-2 variant prediction
452 and antiviral drug design are enabled by RBD in vitro evolution. *Nature*
453 *Microbiology*. 2021;6(9):1188-1198. doi:10.1038/s41564-021-00954-4
- 454 22. Iketani S, Liu L, Guo Y, et al. Antibody Evasion Properties of SARS-CoV-2
455 Omicron Sublineages. *bioRxiv*. Published online January 1,
456 2022:2022.02.07.479306. doi:10.1101/2022.02.07.479306

- 457 23. Cele S, Jackson L, Khoury DS, et al. Omicron extensively but incompletely
458 escapes Pfizer BNT162b2 neutralization. *Nature*. 2022;602(7898):654-656.
459 doi:10.1038/s41586-021-04387-1
- 460 24. Gong SY, Chatterjee D, Richard J, et al. Contribution of single mutations to
461 selected SARS-CoV-2 emerging variants Spike antigenicity. *bioRxiv*.
462 Published online January 1, 2021:2021.08.04.455140.
463 doi:10.1101/2021.08.04.455140
- 464 25. Geoghegan JL, Ren X, Storey M, et al. Genomic epidemiology reveals
465 transmission patterns and dynamics of SARS-CoV-2 in Aotearoa New
466 Zealand. *Nature Communications*. 2020;11(1):6351. doi:10.1038/s41467-020-
467 20235-8
- 468 26. Wilkinson DA, Lebarbenchon C, Atyame C, et al. Genomic insights into early
469 SARS-CoV-2 strains isolated in Reunion Island. *medRxiv*. Published online
470 January 1, 2021:2021.01.21.21249623. doi:10.1101/2021.01.21.21249623
- 471 27. N. Agoti C, Githinji G, S. Mohammed K, et al. Detection of SARS-CoV-2
472 variant 501Y.V2 in Comoros Islands in January 2021 [version 1; peer review: 1
473 approved]. *Wellcome Open Research*. 2021;6(192).
474 doi:10.12688/wellcomeopenres.16889.1
- 475 28. Agoti CN, Ochola-Oyier LI, Mohammed KS, et al. Transmission networks of
476 SARS-CoV-2 in coastal Kenya during the first two waves: a retrospective
477 genomic study. *medRxiv*. Published online January 1,
478 2021:2021.07.01.21259583. doi:10.1101/2021.07.01.21259583
- 479 29. Hannah Ritchie, Esteban Ortiz-Ospina, Diana Beltekian, Edouard Mathieu, Joe
480 Hasell, Bobbie Macdonald, Charlie Giattino, Cameron Appel LRG and MR.
481 Coronavirus Pandemic (COVID-19). *Our World in Data*. Published 2020.
482 Accessed March 1, 2022. <https://ourworldindata.org/coronavirus>
483
484

485 **Acknowledgements**

486 We thank the Seychelles Ministry of Health, Public Health Laboratory, Africa-CDC,
487 WHO-Afro, WHO-Kenya Office, WHO-Seychelles Office for facilitating sharing of
488 SARS-CoV-2 samples that were sequenced. Further, we thanks all the laboratories
489 that have shared SARS-CoV-2 sequence data in GISAID that we included as
490 comparison data in our analysis (see list in appendix 1).

491

492 **Grant Information**

493 This works was supported by the National Institute for Health Research (NIHR)
494 (project references 17/63/82 and 16/136/33) using UK aid from the UK Government
495 to support global health research, The UK Foreign, Commonwealth and
496 Development Office and Wellcome Trust (grant# 220985/Z/20/Z) The views
497 expressed in this publication are those of the author (s) and not necessarily those of
498 NIHR or the Department of Health and Social Care, Foreign Commonwealth and
499 Development Office. This work was also supported by the Seychelles Public Health
500 Laboratory (Public Health Authority), Africa-CDC, WHO-Afro, WHO-Seychelles,
501 ASLM, and WHO-Kenya offices.

502

503 **Data availability**

504 All data generated and analysis script for this manuscript will be available from the
505 Virus Epidemiology and Control, Kenya Medical Research Institute (KEMRI)–
506 Wellcome Trust Research Programme data server,
507 <https://doi.org/10.7910/DVN/AYT2UA>. Whole genome sequences are available from
508 GISAID database accession number EPI_ISL_4880527 - EPI_ISL_4880796,
509 EPI_ISL_5942854 - EPI_ISL_6705093, EPI_ISL_8424404 - EPI_ISL_8424612 and
510 EPI_ISL_11060102 - EPI_ISL_11060407.

511

512 **Conflicts of Interest**

513 The authors have declared no competing interest.

514 **TABLES**

515

516 **Table 1** Demographic characteristics of SARS-CoV-2 positive samples received for sequencing at KWTRP. Sample were collected
 517 between 14th March 2020 and 31st December 2021 (n = 1,298).

518

	Sample sequenced		Samples not sequenced		Total
	Number (n=1056)	population proportion (%)	Number (n=242)	population proportion (%)	
Sex					
Female	560	53.0	120	49.6	680
Male	473	44.8	102	42.1	575
Unknown	23	2.2	20	8.3	43
Age					
Mean	33.4 (18.3)	-	34.3 (20.4)	-	
Median	32	-	34	-	
Min, Max	0,98	-	0,89	-	
Missing	18	1.7	9	3.7	27
Age distribution					
0–9	106	10.0	37	15.3	143
10–19	132	12.5	28	11.6	160

20–29	215	20.4	30	12.4	245
30–39	225	21.3	42	17.4	267
40–49	146	13.8	45	18.6	191
50–59	127	12.0	21	8.7	148
60–69	58	5.5	19	7.9	77
70–79	14	1.3	6	2.5	20
>80	15	1.4	5	2.1	20
Travel information					
Yes	3	0.3	8	3.3	11
No	1053	99.7	234	96.7	1287
Symptoms					
Asymptomatic	37	3.5	31	12.8	68
Symptomatic	273	25.9	52	21.5	325
Deceased	3	0.3	4	1.7	7
Missing	738	69.9	155	64.0	893

519
520
521
522
523
524

525 **Table 2.** Description of SARS-CoV-2 lineages observed in Seychelles, their global history and VOC/VOI status

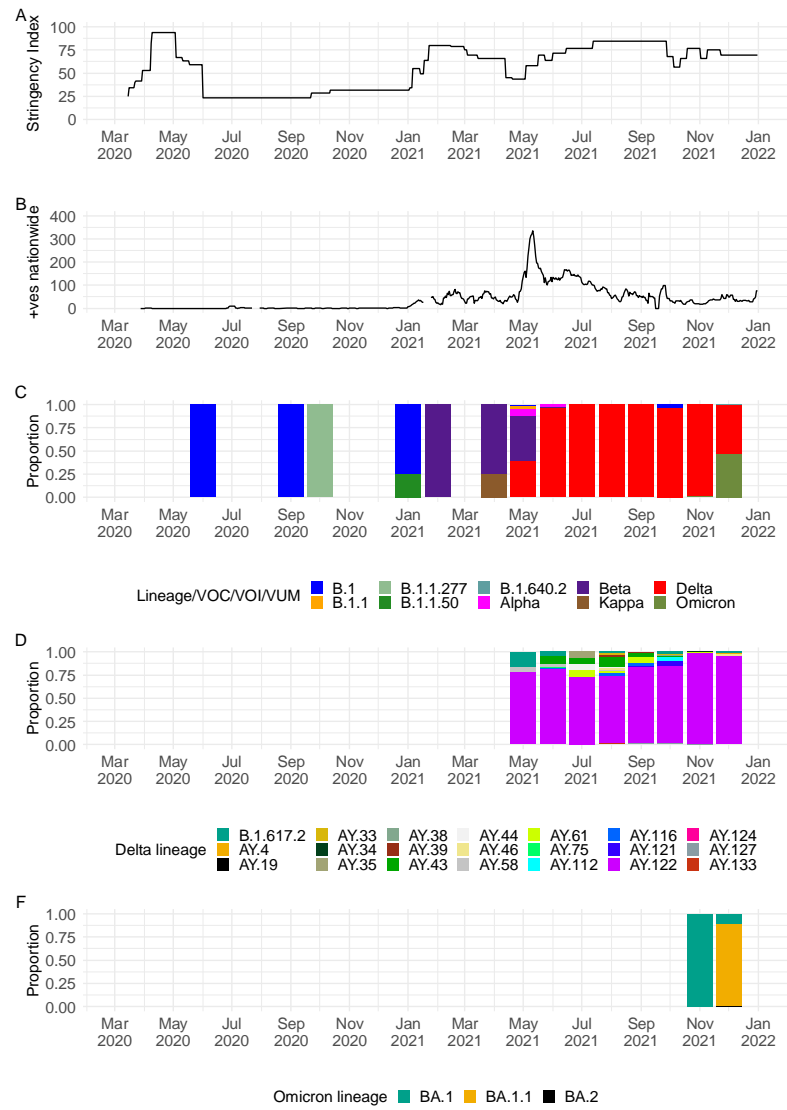
526

Non-VOC/VOI/VOC/VUM	Lineage	Freq	Proportion (%)	Earliest date	Description
Non-VOC/VOI	B.1	9	0.9	2020-01-01	European lineage
	B.1.1	1	0.1	2020-01-01	European lineage
	B.1.1.277	1	0.1	2020-03-07	European lineage
	B.1.1.50	1	0.1	2020-03-29	Predominantly found in Israel and Palestine
VUM	B.1.640.2	1	0.1	2021-10-15	Predominantly found in France
Kappa VOI	B.1.617.1	1	0.1	2020-03-03	Kappa variant of interest , Predominantly found in India lineage with 484Q
Alpha VOC	B.1.1.7	5	0.5	2020-02-07	Alpha variant of concern, first identified in UK
Beta VOC	B.1.351	29	2.7	2020-03-27	Beta variant of concern, first identified in South Africa
Delta VOC	B.1.617.2	13	1.2	2020-04-15	Predominantly found in India
	AY.4	2	0.2	2020-08-03	Predominantly found in UK
	AY.19	1	0.1	2021-04-07	Predominantly found in South Africa
	AY.33	4	0.4	2020-06-13	Lineage circulating mostly in Belgium, Denmark, France, Netherlands, Germany
	AY.34	1	0.1	2020-11-18	Predominantly found in UK
	AY.35	1	0.1	2020-08-21	Predominantly found in lineage with spike E484Q circulating in USA
	AY.38	1	0.1	2021-03-27	Predominantly found in in South Africa
	AY.39	4	0.4	2021-01-14	Predominantly found in USA
	AY.43	33	3.1	2021-08-21	Predominantly found in European
	AY.44	2	0.2	2020-05-11	Predominantly found in USA
	AY.46	8	0.8	2021-10-15	Predominantly found in Africa
	AY.58	5	0.5	2021-03-16	Predominantly found in Italy

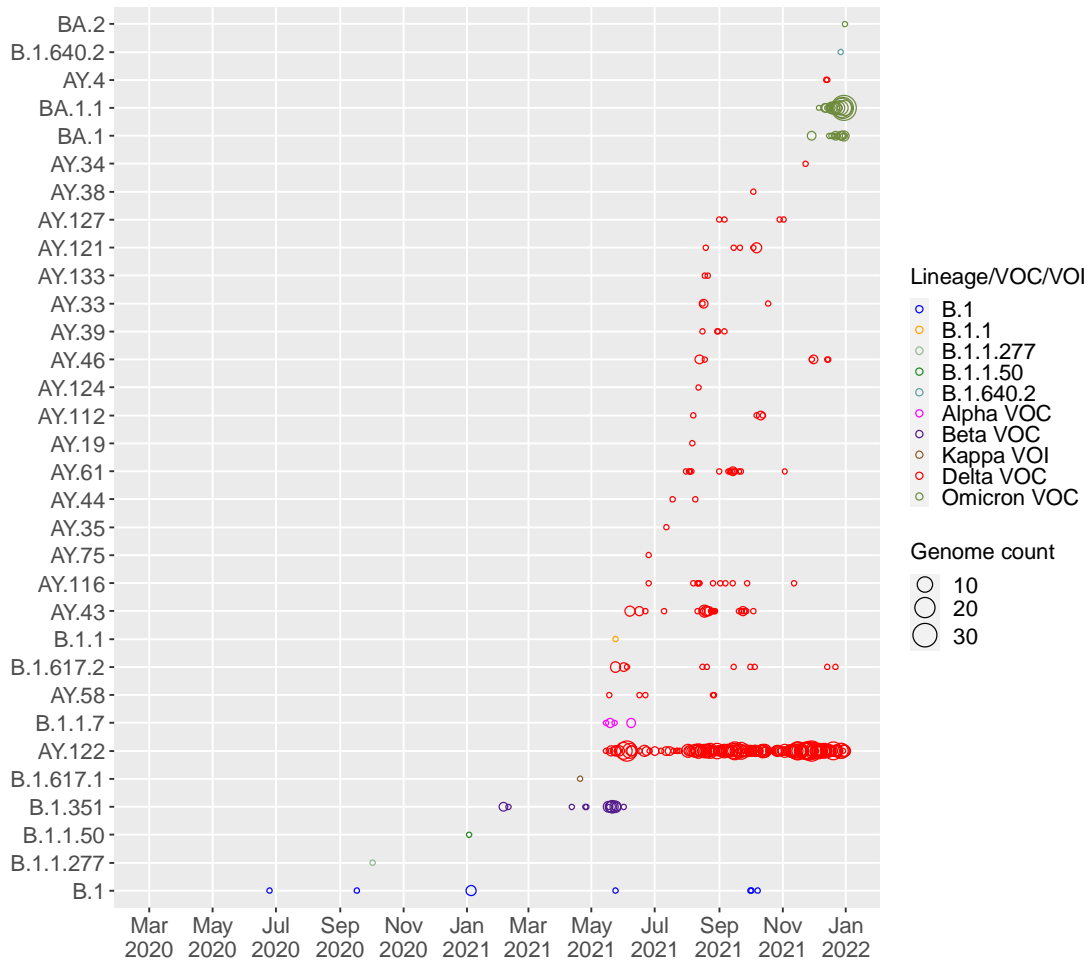
	AY.61	15	1.4	2021-01-07	Predominantly found in Italy
	AY.75	1	0.1	2021-01-06	Predominantly found in USA
	AY.112	5	0.5	2020-12-05	Predominantly found in India
	AY.116	11	1.0	2021-01-21	Africa lineage
	AY.121	7	0.7	2021-01-24	Predominantly found in Turkey
	AY.122	742	70.3	2020-09-07	European lineage
	AY.124	1	0.1	2021-01-09	Predominantly found in Portugal and other European countries
	AY.127	4	0.4	2020-12-10	Predominantly found in India
	AY.133	2	0.2	2021-02-10	Predominantly found in France
Omicron VOC	BA.1	18	1.7	2021-09-10	Predominantly found in UK
	BA.1.1	126	11.9	2021-09-13	Predominantly found in USA
	BA.2	1	0.1	2021-11-17	Predominantly found in UK

527

528 **FIGURE LEGENDS**



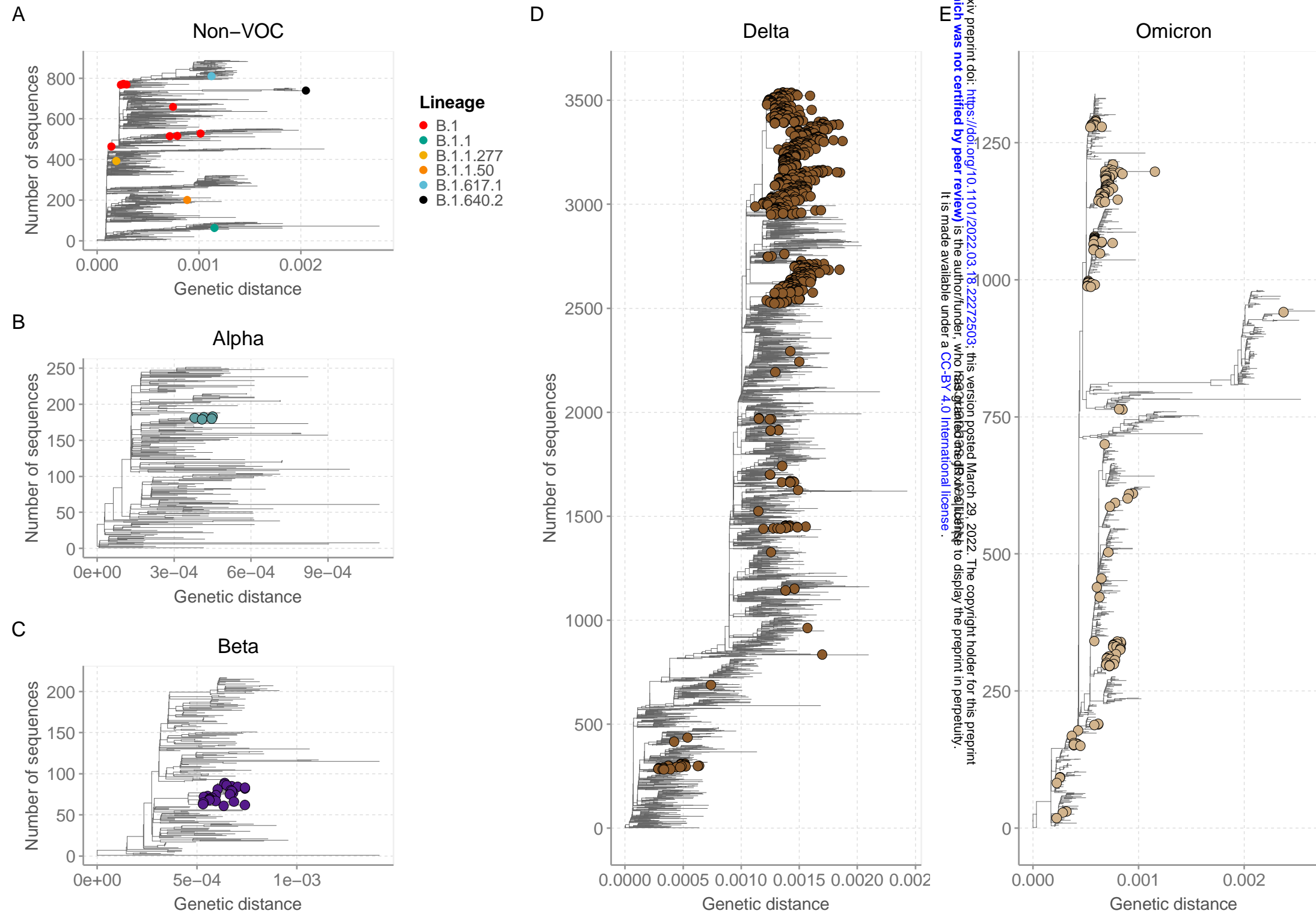
529
 530 **Figure 1** A Seychelles government intervention levels as measured by the Oxford
 531 stringency index ²⁹. B An epidemic curve for Seychelles derived from the daily
 532 positive case numbers obtained from
 533 <https://ourworldindata.org/coronavirus/country/seychelles>. C Monthly temporal
 534 pattern of SARS-CoV-2 lineages and variants in Seychelles among the 1,056
 535 samples sequenced from COVID-19 positive cases from the Seychelles (25th June
 536 2020, to 31st December 2021). D Monthly temporal distribution of Delta VOC
 537 lineages among samples sequenced from COVID-19 positive cases from the
 538 Seychelles (25th June 2020, to 31st December 2021). E Monthly temporal distribution
 539 of Omicron VOC lineages among samples sequenced from COVID-19 positive cases
 540 from the Seychelles (25th June 2020, to 31st December 2021).



541

542 **Figure 2** SARS-CoV-2 Pango lineages in the sequenced 1,056 Seychelles samples

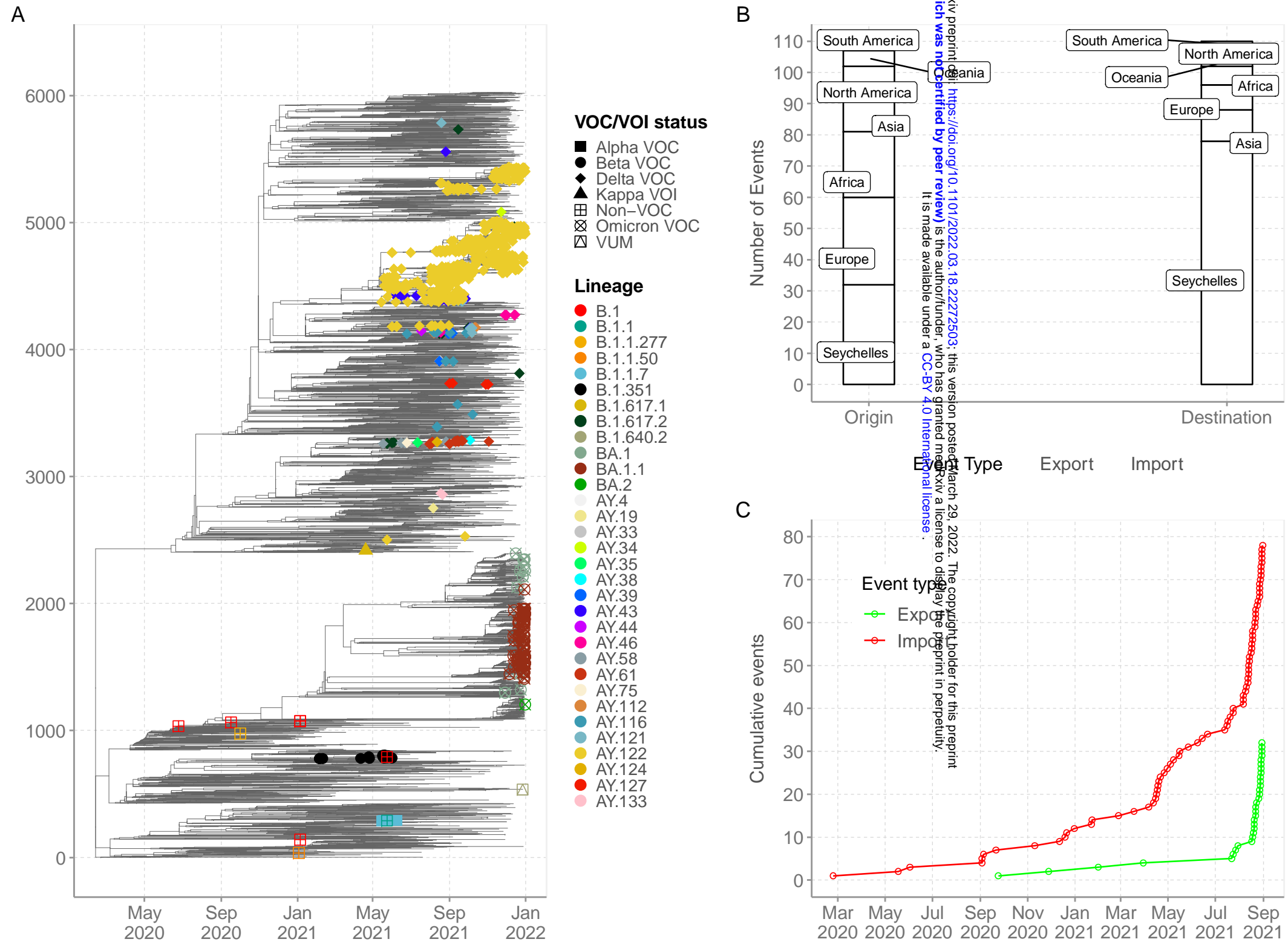
543 and timing of detections (circle size scaled by number of daily detections).



544

545 **Figure 3** Genetic distance-resolved lineage-specific phylogenetic trees for Omicron, Alpha, Beta, Delta VOC, and Non-VOC. Seychelles genomes are indicated with colored tip labels. **A** Phylogeny
 546 of Delta VOC that combined 863 Seychelles sequences and 2,676 global sequences. **B** Phylogeny of Omicron VOC that combined 145 Seychelles sequences and 1,195 global sequences **C**
 547 Phylogeny of Alpha VOC that combined 5 Seychelles sequences and 246 global sequences. **D** Phylogeny of Beta VOC that combined 29 Seychelles sequences and 187 global sequences. **E**
 548 Phylogeny of Non-VOC that combined 14 Seychelles sequences and 875 global sequences.

549

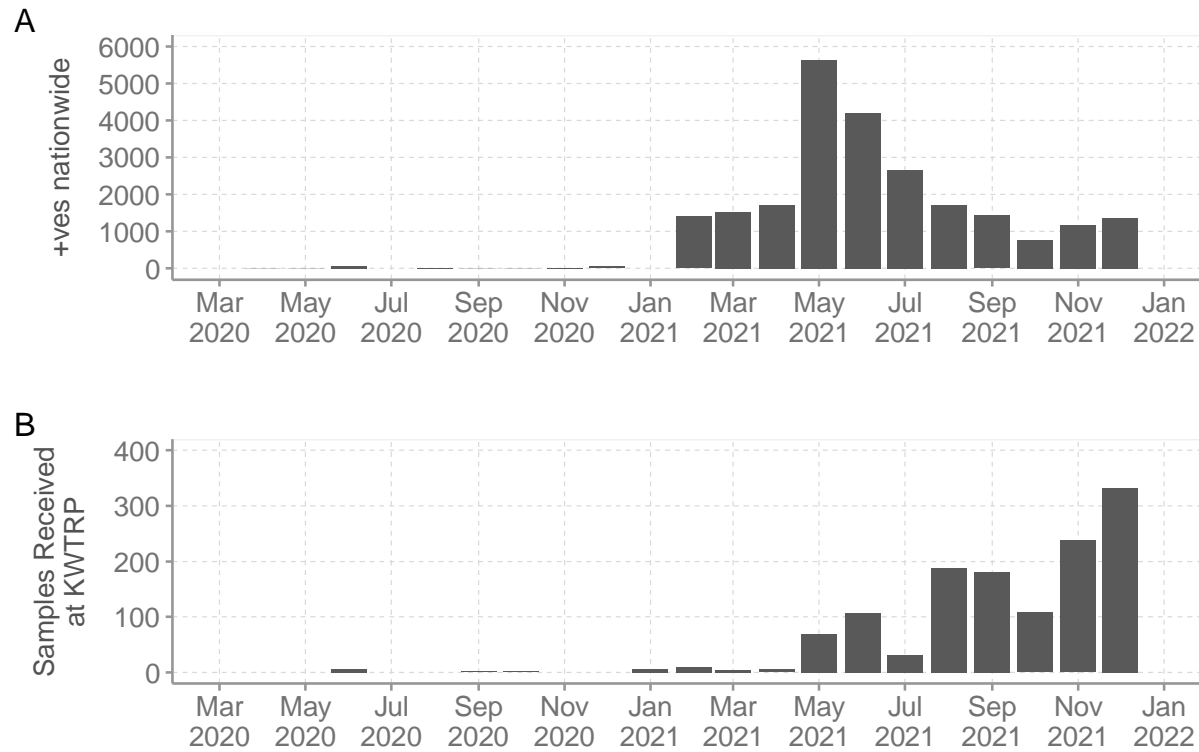


550

551 **Figure 4 A.** Time-resolved global phylogeny that combined 1,056 Seychelles sequences (coloured tip labels) and 5,179 global reference sequences. **B** The number of viral imports and exports into

552 and out of Seychelles. **C** Cumulative number of viral imports and export over time into Seychelles.

553 **SUPPLEMENTARY FIGURES**



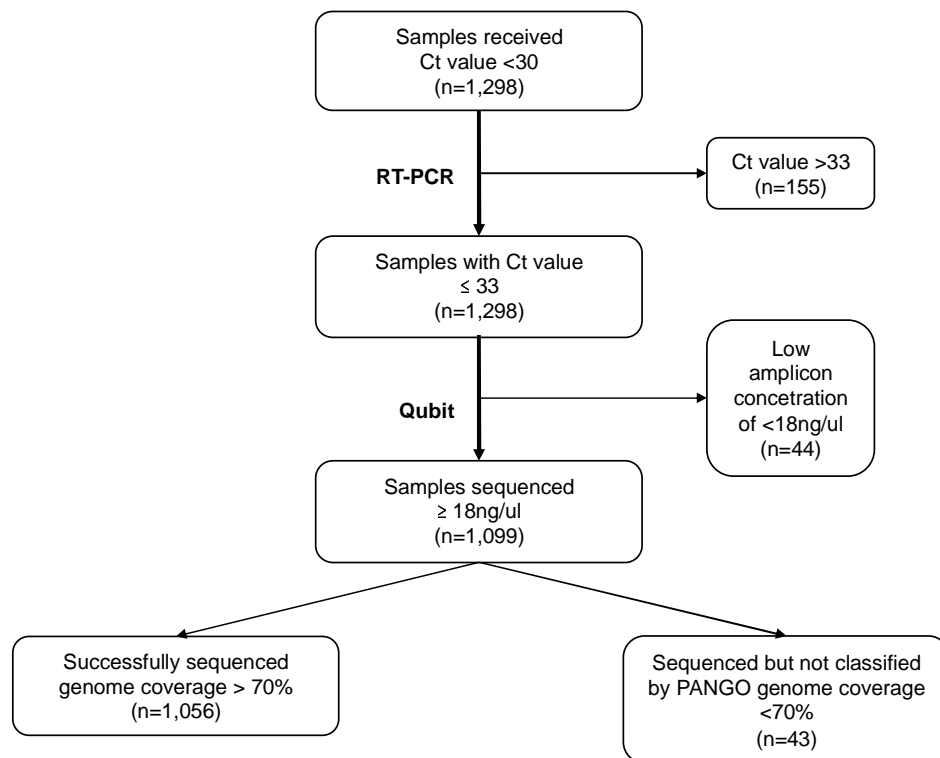
554

555

556 **Supplementary Figure 1 A** The monthly temporal distribution of SARS-CoV-2 cases between March 2020 and 31st December

557 2021 in Seychelles vs SARS-CoV-2 positives samples received at KEMRI-WT for whole genome sequencing.

558



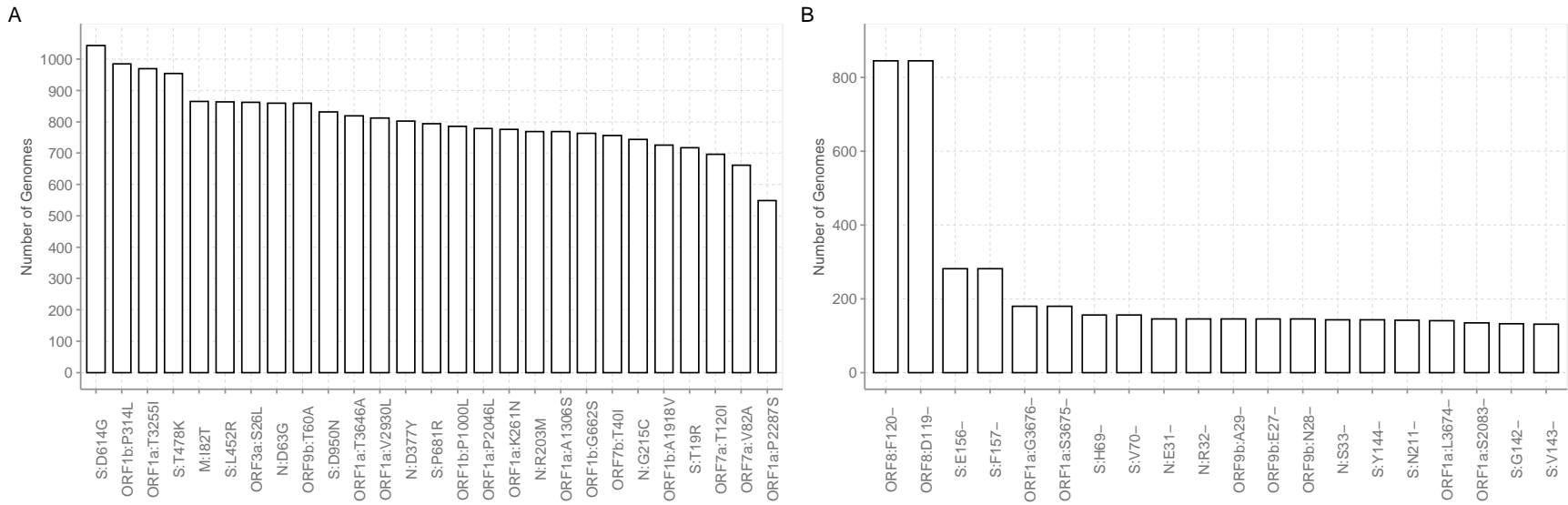
559

560

561 **Supplementary Figure 2** Flow chart describing processing of SARS-CoV-2
562 samples received at KEMRI-WT for whole genome sequencing.

563

564



565

566

567 **Supplementary Figure 3** **A** Prevalent amino acid mutation among the 1,056 genomes from Seychelles. **B** Prevalent amino acid
 568 deletions among the 1,056 genomes from Seychelles.

569

570