

# **A fast and sensitive absolute quantification assay for the detection of SARS-CoV-2 peptides using Parallel Reaction Monitoring Mass Spectrometry**

Akshada Gajbhiye<sup>1#</sup>, Atakan Nalbant<sup>1#</sup>, Tiaan Heunis<sup>1#</sup>, Frances Sidgwick<sup>1#</sup>, Andrew Porter<sup>1#</sup>, Yusri Taha<sup>2</sup>, Matthias Trost<sup>1\*</sup>

<sup>1</sup>Laboratory for Biomedical Mass Spectrometry, Newcastle University, Newcastle upon Tyne, UK; <sup>2</sup>The Newcastle upon Tyne Hospitals NHS Foundation Trust, Newcastle upon Tyne, Newcastle upon Tyne NE1 4LP, UK.

<sup>#</sup>these authors contributed equally

\*Correspondence: Matthias Trost email: [matthias.trost@ncl.ac.uk](mailto:matthias.trost@ncl.ac.uk)

**Running title:** COVID-PRM

**Keywords:** SARS-CoV-2, PRM, Absolute Quantification, Mass Spectrometry

21 **ABSTRACT:**

22 The on-going SARS-CoV-2 (COVID-19) pandemic has called for an urgent need for rapid  
 23 and high-throughput methods for mass testing for early detection, prevention and surveillance  
 24 of the disease. Here, we tested if targeted parallel reaction monitoring (PRM) quantification  
 25 using high resolution Orbitrap instruments can provide the sensitivity and speed required for  
 26 a high-throughput method that could be used for clinical diagnosis. Here we report a high-  
 27 throughput and sensitive PRM-MS assay that enables absolute quantification of SARS-CoV-  
 28 2 nucleocapsid peptides with short turn-around times. Concatenated peptides (QconCAT)  
 29 synthesized using isotopically labelled SARS-CoV-2 were used for absolute quantification.  
 30 We developed a fast and high-throughput S-trap-based sample preparation method, which  
 31 was then successfully utilized for testing 25 positive and 25 negative heat-inactivated  
 32 nasopharyngeal swab samples for SARS-CoV-2 detection. The method was able to  
 33 differentiate between negative and positive patients accurately within its limits of detection.  
 34 Moreover, extrapolating from the QconCAT absolute quantification, our data show that  
 35 patients with Ct values as low as 17.5 have NCAP protein amounts of around 7.5 pmol in  
 36 swab samples. The present high-throughput method could potentially be utilized in  
 37 specialized clinics as an alternative tool for detection of SARS-CoV-2.

38  
 39  
 40  
 41

## 42 INTRODUCTION:

43 The on-going human Coronavirus Disease 2019 (COVID-19) pandemic caused and still  
 44 causes severe global health and economic problems in almost every country in the world.  
 45 Since the beginning of the pandemic till March 2022, Covid-19 has affected more than 450M  
 46 people and caused 6 M deaths worldwide [1]. The disease is caused by severe acute  
 47 respiratory syndrome coronavirus 2 (SARS-CoV-2), a novel and more virulent strain of  
 48 coronaviruses (CoVs) [2]. This strain of coronavirus is more virulent but similar to two other  
 49 strains of betacoronaviruses SARS-CoV and Middle East respiratory syndrome (MERS-CoV)  
 50 [3]. Like other CoVs, the SARS-CoV-2 genome comprises of linear, single-stranded positive-  
 51 sense RNA which encodes 10 genes, responsible for production of total 26 proteins. Out of  
 52 the 26 proteins, four structural proteins contribute to ~80% of the genome. These four  
 53 structural proteins comprise of a spike glycoprotein (S), which enables viral entry into the  
 54 mammalian cell by binding to the angiotensin-converting enzyme 2 (ACE2) receptor, a  
 55 nucleoprotein (N) that provides stability to the viral genome by directly binding to the RNA,  
 56 an envelope protein (E) and membrane protein (M) that forms the outer layer of the virus [4].  
 57 The N and S protein copies per virion are estimated to be approximately 1000 and 300,  
 58 respectively. The remaining proteins of the genome are required for functions such as  
 59 proofreading, RNA polymerase, proteases and other supporting proteins for replication of the  
 60 genome.

61 The predominant method of testing for individuals infected with SARS-CoV-2 includes real-  
 62 time quantitative polymerase chain reaction (RT-qPCR), which is usually done on  
 63 nasopharyngeal (NP) swabs. The RNA is extracted from these swabs and amplified using  
 64 specific primers, which makes it more specific, sensitive and relatively rapid, deeming it as  
 65 the gold standard assay for SARS-CoV-2 detection by World Health Organization (WHO).  
 66 Other rapid tests including Simple Amplification Based Assay (SAMBA) [5], which uses  
 67 nucleic acid for detection, serological assays such as Lateral Flow Immunoassays (LFA) [6]  
 68 and enzyme-linked immunosorbent assays (ELISA) have also been developed. These have  
 69 been implemented owing to the global pressure for identifying the infected individuals with  
 70 quick turnaround rates. The high demand for RT-qPCR testing has in recent times caused a  
 71 global shortage of reagents as well as other rapid tests are prone to false-positive and false-  
 72 negative reporting which might be caused due to inhibition of substances in clinical samples  
 73 [7]. Thus, at times during the pandemic, complementary alternative assays for detection of

74 SARS-CoV-2 became increasingly urgent to share the burden of immediate mass testing  
75 required for management of the pandemic.

76 In recent years mass spectrometry (MS)-based targeted proteomic approaches have  
77 increasingly been implemented in clinical labs due to advancements in the sensitivity and  
78 accuracy of instrumentation. An excellent example of this is successful application of Matrix-  
79 Assisted Laser Desorption/Ionization Time-Of-Flight mass spectrometry (MALDI-TOF-MS)  
80 for characterization of Nucleoprotein (NCAP) and Spike Glycoprotein (SPIKE) from the  
81 SARS virus, which caused an outbreak in 2003[8]. Building on this, many MS-based  
82 methods have emerged for detection of the SARS-CoV-2 NCAP, and SPIKE proteins based  
83 on their tryptic peptides. Most of these methods either have been built directly from  
84 specimens infected with high viral loads of SARS-CoV-2; for instance, a study by Gouveia  
85 *et al* selected 14 peptides from proteomics of SARS-CoV-2 infected Vero cells [9], or from  
86 clinical specimens where enrichment was required for detection of these peptides. Ihling *et al*  
87 used gargle solution for detection of SARS-CoV-2 peptides from three Covid-19 positive  
88 individuals [10]. In another study by Nikolaev *et al*, peptides from NCAP protein were  
89 detected by tandem mass spectrometry using nasopharyngeal epithelial scrapings [11].  
90 Similarly, Singh *et al* [12], Gouveia *et al* [13] and Saadi *et al* [14] utilized nasopharyngeal  
91 swabs to establish proof-of-principle studies for detection of SARS-CoV-2 peptides. More  
92 recently Renuse *et al* [15] present a LC-MS based method where peptides for NCAP and  
93 SPIKE were enriched using immunoaffinity beads. Puyvelde *et al* [16] have attempted to use  
94 a QconCAT Stable Isotopic Labeled (SIL) internal standard for improving the efficiency of  
95 their MRM-MS assay. Importantly, most of these methods include acetone precipitation-  
96 based methods for sample preparation and are either low-throughput or time consuming,  
97 thereby lacking the short turn-around time required for a clinical high-throughput assay.

98 In this study, we report development of a high-throughput liquid chromatography mass  
99 spectrometry based parallel reaction monitoring (PRM) assay for detection and absolute  
100 quantification of SARS-CoV-2 peptides, which allows viral detection directly from patient  
101 samples. We could identify and report patients with high viral load and Ct values up to 22.  
102 This method allows detection of SARS-CoV-2 peptides with a turnaround time of ~2 hrs for  
103 each patient starting from sample preparation to reporting the results and up to 200 samples  
104 per day.

## **MATERIALS AND METHODS:**

### **Chemicals and reagents:**

Sodium dodecyl sulfate (SDS), >98% pure was purchased from VWR International Limited. Triethylammonium bicarbonate (TEAB) 1 M, and ortho-phosphoric acid 85%, Tris(2-carboxyethyl) phosphine (TCEP) and Iodoacetamide  $\geq 98\%$  were purchased from Sigma. Proteomics Grade Trypsin was purchased from Pierce Thermo Fisher Scientific. Acetonitrile, Methanol (LC-MS grade) and Formic Acid (>99.0%, LC-MS, UHPLC-MS) were purchased from Fisher Scientific. Formic acid was obtained from Merck. S-traps were purchased from Protifi. SARS-CoV-2 Spike Glycoprotein (Full-Length) expressed in CHO cells from Native Antigen, Synthetic Sputum from LGC and PolyQuant Cov-MS from PolyQuant were received as part of the Covid Moonshot Consortium. SARS-CoV-2 Nucleoprotein was received from University of Sheffield.

### **Patient samples for method validation:**

Fifty nasopharyngeal swab samples including both positive and negative for Covid-19, were received from the Newcastle Upon Tyne Hospitals NHS Foundation Trust, in 2.5 mL VTM. The samples were stored at  $-20^{\circ}\text{C}$  until further processing.

### **Sample pre-processing and preparation for MS:**

The SARS-CoV-2 recombinant protein standards were processed for peptide identification, targeted MS-based proteomic method development, and calibration curve establishment for sensitivity assessment. Each protein standard was processed separately by suspension trapping (S-Trap), with minor modifications as previously described [17,18], for method development and peptide identification. Modifications included a single step reduction and alkylation with 10 mM TCEP and IAA, respectively, and digestion at  $47^{\circ}\text{C}$  for 1 hour using a 1:10 trypsin: protein ratio. The method was further optimized to exclude the reduction and alkylation step, as well as sample elution, to achieve a faster and high-throughput method discussed further in the results section.

### **LC-MS Method and data analysis:**

LC-MS/MS analysis was performed on a Thermo Scientific QExactive-HF (QE-HF) hybrid mass spectrometer coupled to a Evosep One LC device. The Evosep One was operated using the 200 samples per day method at a flow rate of 2  $\mu$ l/min with a 7.2-minute total run time per sample [19]. The Evosep One was equipped with a 40 mm x 150  $\mu$ m column from Evosep packed with Dr Maisch C18 AQ, 1.9  $\mu$ m beads. The QE HF was operated in either DDA or PRM-mode using a resolution of 60,000 AGC target of  $2 \times 10^5$  for DDA and 30,000 for PRM, maximum injection time of 50 ms, and a quadrupole isolation width of 1.2 m/z. Peptides were selected for MS/MS data acquisition using an un-scheduled method and fragmented using collision energies optimised for each peptide. An electrospray voltage of 2.1 kV and capillary temperature of 300°C, with no sheath and auxiliary gas flow, was used. MaxQuant 1.6.10.43 was used for peptide and protein identification [20] using UniprotKB/Swissprot databases for Homo Sapiens containing 42437 sequences downloaded on September 2020 and a combined viral database SARS and influenza viruses including the SARS-Cov-2 virus sequences. Targeted proteomic method refinement and data analysis was performed in Skyline-daily 20.2.1.286 [21].

### **Determination of LOD and LOQ:**

Calibration curves for LOD and LOQ determination were obtained from SARS-CoV-2 NCAP peptides in 0.1% formic acid, synthetic sputum, swab and saliva samples. To generate the calibration curves in different matrices, proteotypic peptides for NCAP were spiked into each matrix at 10 fmol/ $\mu$ L followed by serial dilution (2-fold) until 10 attomoles/ $\mu$ L was reached. For each concentration, 5  $\mu$ L sample was injected on the LC-MS system in triplicates. A calibration curve was created using the raw intensity values for each peptide in each matrix and a regression value ( $R^2$ ) was calculated. Limits of detection and quantitation were determined using the standard deviation of the curve and the slope values.

### **Patient sample pre-processing for MS analysis:**

Nasopharyngeal swab samples were received in 2.5 mL of Viral Transport Medium (VTM), comprising of Anderson's modified Hanks Balanced Salt Solution (8.0 g/L NaCl, 0.4 g/L KCl, 0.05 g/L  $\text{Na}_2\text{HPO}_4$ , 0.06 g/L  $\text{KH}_2\text{PO}_4$ , 1.0 g/L Glucose, 0.7 g/L  $\text{NaHCO}_3$ , 0.2 g/L  $\text{MgSO}_4 \cdot 7\text{H}_2\text{O}$ , 0.14 g/L  $\text{CaCl}_2 \cdot 2\text{H}_2\text{O}$ ) with 2% v/v heat-inactivated fetal bovine serum,

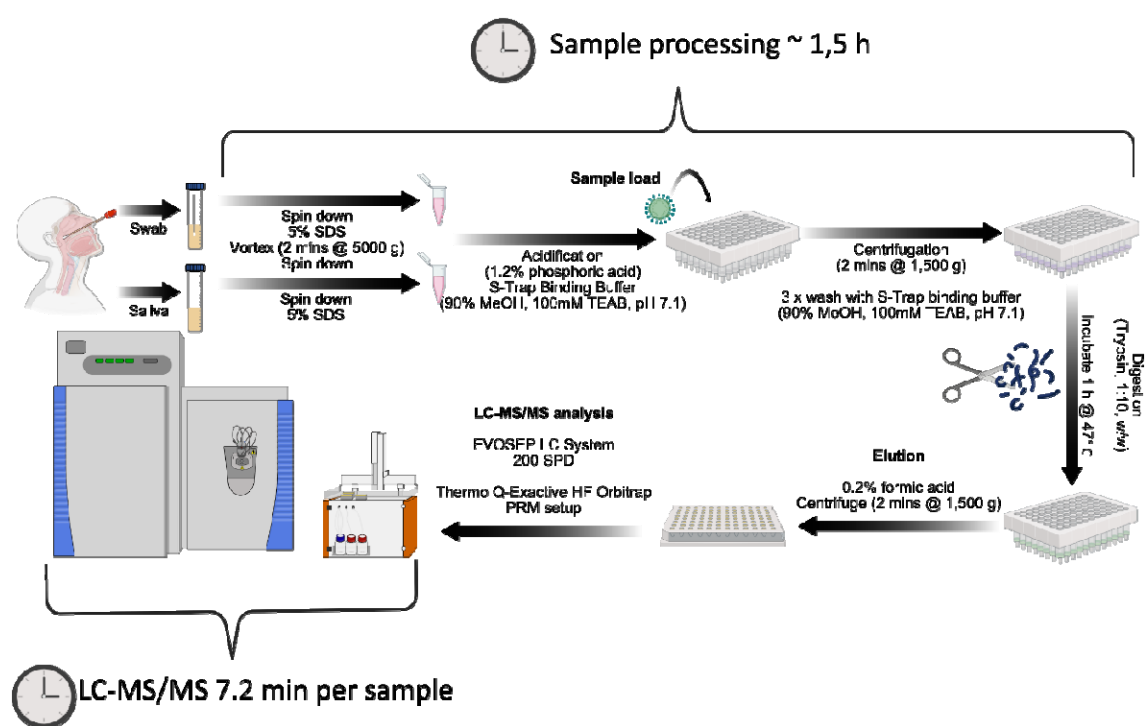
163 100 µg/mL gentamicin and 0.5 µg/mL amphotericin B, as recommended by the CDC  
164 [22].The virus was inactivated by heating at 80°C for 5 min and 1 mL of 20% SDS was  
165 added to the VTM containing the swab such that the total SDS concentration was ~5 % which  
166 is compatible with the S-trap method of sample digestion. The samples were vortexed for 15  
167 min followed by centrifugation at 1500 x g and the entire solution was collected, aliquoted  
168 and stored at -80°C for further use.

## RESULTS

A high-throughput LC-MS method should be reproducible, robust and sensitive. Towards our goal of developing a high-throughput PRM method for detection of SARS-CoV-2 peptides, we developed a fast and reproducible sample preparation method which can be used in conjunction with the PRM method. The details of the of the sample preparation and LC-MS method are listed below.

### Sample preparation for high-throughput analysis of SARS-CoV-2 samples

The sample preparation was designed to accommodate nasopharyngeal swabs which are the preferred sample collection methods in use in the clinic. In order to return clinical data quickly, we aimed to design the sample preparation method for high-throughput sample preparation, efficient virus inactivation and analysis within 2 hrs (**Figure 1**).



**Figure 1: A stepwise detailed workflow for high-throughput sample processing for LC-MS based detection of SARS-CoV-2 peptides.** 20% SDS was added to nasopharyngeal swab or saliva samples from patients for a final concentration of 5%. Fifty uL of the 3 mL sample were added onto 96-well S-Trap plates, where the samples were washed, digested, and eluted in a mass spectrometry compatible buffer. The eluates were directly separated on



an EvoSep LC system and analysed on a QExactive HF mass spectrometer. The present method allows efficient digestion of multiple samples with various matrices under 2 hours, permitting the LC-MS and data analysis in approximately 15 mins.

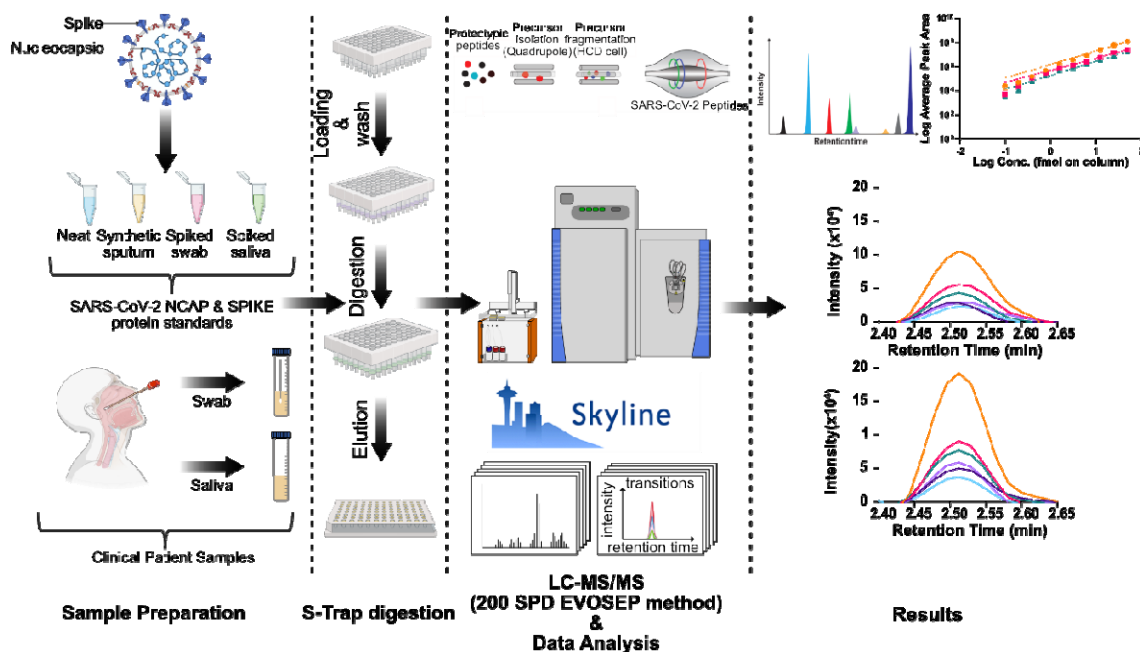
Recombinant SARS-CoV-2 SPIKE and NCAP proteins were spiked at 100 pmol/mL into artificial saliva or into saliva and swab samples (stored in 3 mL viral transfer medium) taken from a healthy volunteer. As clinical samples will require virus inactivation, we tested 70 % ethanol, heat inactivation at 80°C for 5 min as well as addition of 20% SDS to a final concentration of 5% followed by heat inactivation at 80°C. After addition of ethanol or SDS, the samples were shaken for 15 mins and centrifuged for 5 mins at 1500 x g. Samples were further processed using 96-well S-trap plates as this workflow provides a fast method for digestion of proteins in most buffers without the need for precipitation, thereby avoiding sample loss and long sample preparation times. As none of the previously reported proteotypic peptides of NCAP or SPIKE contain a cysteine, we tested if reduction with TCEP and alkylation with IAA were necessary for the efficient detection of the target peptides. Digestion efficiency was assessed by LC-MS/MS analysis of tryptic peptides and was found to be unaffected even when samples were not reduced and alkylated before digestion. **(Supplementary Figure 1A).**

In the standard S-Trap protocol peptides are eluted with two aqueous (50 mM TEAB and 0.2% formic acid) and an organic (50% MeCN, 0.2% formic acid) step. Due to the organic solvent, the samples require vacuum drying before LC-MS analysis. In order to save time, we tested if we could omit the elution in MeCN, thereby allowing straight injection of the eluted digests into the mass spectrometer. Indeed, omission of the organic elution did not affect overall intensities of SPIKE and NCAP peptides **(Supplementary Figure 1B).**

## **Identification of SARS-CoV-2 proteotypic peptides for targeted analysis**

Selection of appropriate, proteotypic peptides is a key step towards developing a robust and reproducible targeted LC-MS assay. In order to identify the proteotypic peptides of SARS-CoV-2 SPIKE and NCAP proteins, recombinant proteins were digested in neat (0.1% formic acid) and spiked into artificial saliva or into saliva and swab samples taken from a healthy volunteer. Digests were analysed on a Q-Exactive HF in data-dependent analysis (DDA) mode coupled to an EvoSep LC -MS system, using the 60 sample per day (60 SPD) method **(Figure 2)**. The DDA-based analysis of neat SPIKE and NCAP recombinant proteins

revealed a list of tryptic peptides (**Supplementary Data 1**), which provided the basis for initial screening of the target peptides. Furthermore, a QconCAT for stable isotope labelling based absolute quantification was added. This QconCAT was synthesized to include specific SPIKE and NCAP peptides based on the study by Puyvelde et al. [16]. Finally, DDA analysis of saliva samples revealed a list of consistently identified proteotypic peptides from high-abundant human proteins such as Lysozyme C (LysC) which we used as an internal control to check for sample preparation and acquisition efficiency (**Supplementary Data 2**).



**Figure 2: High-throughput and fast PRM-MS method for detection of SARS-CoV-2 peptides using state-of-the art LC-MS set-up.** Recombinant protein standards for SPIKE and NCAP were utilized in neat, simulated sputum, saliva and nasopharyngeal swabs for developing a fast and high-throughput PRM method using 96-well S-trap sample preparation and an Evosep coupled to Thermo QE-HF mass spectrometer. Data was analysed by Skyline to assess the sensitivity of the system as well as to validate using patient swab samples.

In order to select optimal proteotypic peptides for the targeted PRM analysis, we followed published selection criteria for a targeted-based LC-MS assays such as tryptic peptide length of 8 to 25 amino acid and excluded peptides with possible modifications such as oxidation on Methionine, deamidation on Asparagine followed by Glycine, and any other possible post-translational modifications [24]. Following these criteria, an initial list of tryptic peptides was

generated which were further analysed in matrices such as saliva. Of the initial 19 peptides (Supplementary Data 3), only five could reproducibly be detected when analysed in a background matrix of artificial and volunteer saliva. As peptides from SPIKE were inconsistently observed and their retention times varied across runs, SPIKE peptides were omitted from future analysis. SPIKE peptides are known to be heavily glycosylated, making them notoriously harder to detect [25]. Moreover, NCAP is considered to be about 3-fold more abundant in SARS-CoV-2 than SPIKE [4], increasing the sensitivity. Therefore, it was not surprising that the highest sensitivity was achieved for the NCAP peptides AYNVTQAFGR and ADETQALPQR. Additionally, as KADETQALPAR was consistently detected in all the DDA runs, it was included in the list even though it contains a missed cleavage. Human Lysozyme C, as mentioned earlier, was used as an internal control for sample preparation and to check for digestion and ionization efficiency. The final list consisted of total seven peptides including the stable isotopically labelled peptides from QconCAT which were further used for MS method development and optimization (Table 1).

#### PRM-MS method development and optimization

A PRM method was created on the QE-HF using the 200 samples per day (200 SPD) short gradient LC method integrated on the Evosep One. The Evosep One is specifically designed to run samples back-to-back without carryover due to the tip-based sample injection system, which serves as a single-use trap column thereby increasing the overall life of the column, making the system well-suited for a high-throughput method [26]. The PRM method was further optimized for collision energies (Supplementary Figure 2) for the individually selected peptides along with their corresponding SIL peptides emerging from the QconCAT. The QconCAT sequence information can be found in (Supplementary Data 4). The normalized collision energies (NCE) for the targeted peptides were optimized within the range of 20- 29 for all the peptides. The optimal collision energies for individual peptides were selected based on the intensities of their product ions using Skyline. Details of the seven peptides and collision energies used for the final PRM assay are listed in Table 1.

**Table 1: Peptides selected for the development of PRM-MS assay for detection of SARS-CoV-2 peptides**

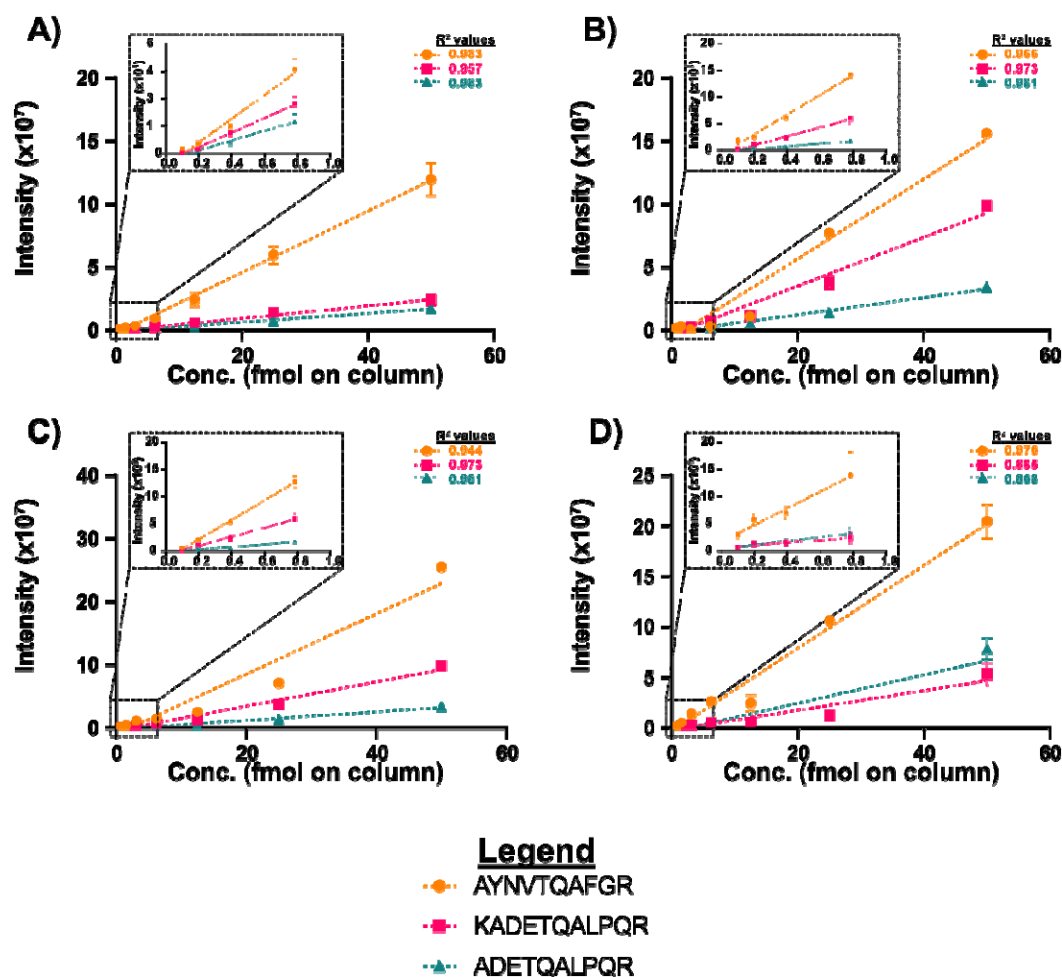
No	Peptide Sequence	Source	m/z, charge	Norm. Collision Energy	Type
1	AYNVTQAFGR	NCAP(SARS-CoV-2)	563.785 <sup>2+</sup>	24	light
2	ADETQALPQR	NCAP(SARS-CoV-2)	564.785 <sup>2+</sup>	23	light
3	KADETQALPQR	NCAP(SARS-CoV-2)	419.557 <sup>3+</sup>	20	light
4	AYNVTQAFGR	QconCAT	571.263 <sup>2+</sup>	24	heavy
5	ADETQALPQR	QconCAT	572.263 <sup>2+</sup>	23	heavy
6	KADETQALPQR	QconCAT	425.207 <sup>2+</sup>	20	heavy
7	STDYGIFQINS	LYS-C ( <i>Homo sapiens</i> )	700.843 <sup>2+</sup>	25	light

### Assessing the sensitivity and robustness of the PRM method

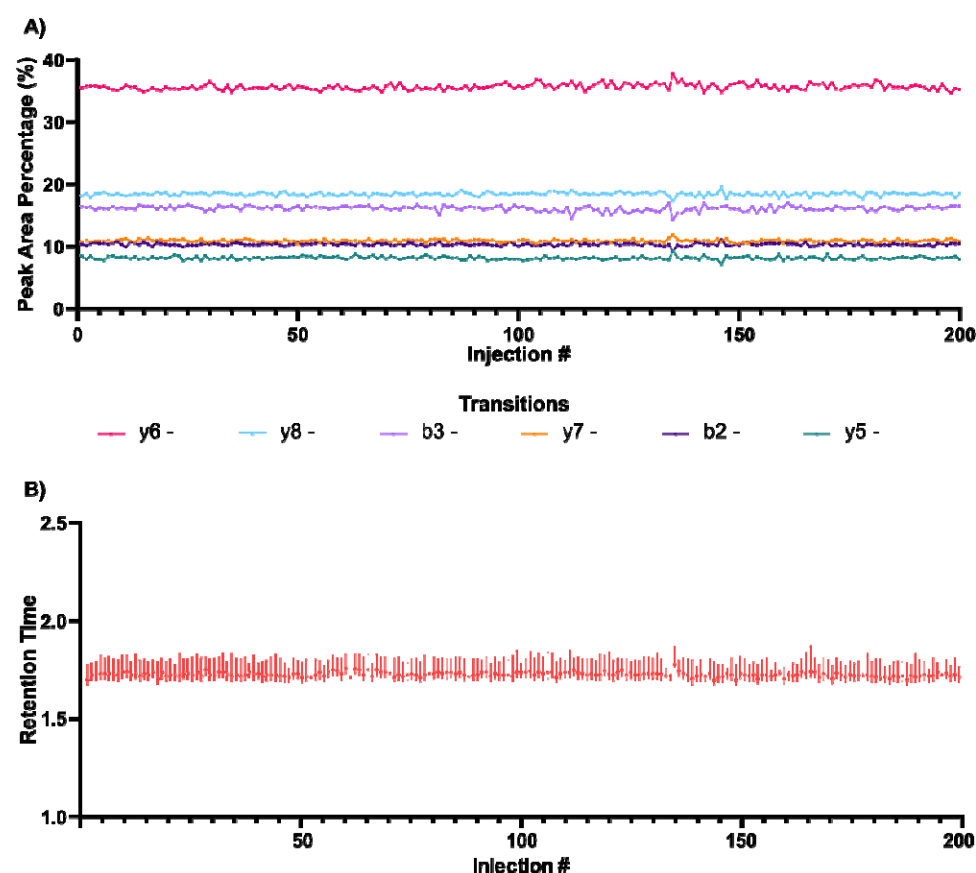
The next step in establishing the high throughput PRM method involved its assessment for sensitivity and specificity. Calibration curves of the target peptides in neat, artificial saliva as well as real saliva and swab samples were generated using the tryptic digests for recombinant protein standards for NCAP. Recombinant tryptic peptides in 0.1% formic acid (“neat”) (**Figure 3A**), spiked swab (**Figure 3B**), spiked oral fluid (**Figure 3C**) and spiked saliva (**Figure 3D**) were injected in a dilution series from 50 femtomoles to 50 attomoles was on column. The limit of detection (LOD) for NCAP peptides was found to be as low as 170 amol on column, while the limit of quantitation (LOQ) was found to be 850 amol when injected neat (**Table 2**). The calibration curves for the logged intensities also depict the linearity of the curves as seen in (**Supplementary Figure 3**). The LOD and LOQ were calculated using the formulae  $3 \cdot Sa/b$  and  $10 \cdot Sa/b$  respectively, where Sa is standard deviation of the calibration curve response and b is the slope of the curve. The LOD and LOQ decreased to 0.63 fmol and 3.24 fmol on column, respectively, for the same peptide when injected as a spike-in in the real saliva and swab samples. The drop in sensitivity was expected when peptide standards

were injected with saliva sample due to the matrix effect contributed by other endogenous high abundant salivary proteins such as Lysozyme C and Albumin. The high abundance of these proteins contributes towards signal suppression of the target peptides resulting in the overall drop in sensitivity in the saliva and swab samples.

The existing PRM assay system needed to not only be sensitive but also robust to carryout high-throughput analysis of many samples. To test the robustness of the LC-MS system a continuous 200 sample test was performed with a saliva sample spiked-in with NCAP peptides. The peptide AYNVTQAFGR was monitored for its product ion areas and retention time. The test revealed that the system performed consistently without a notable drop in sensitivity across all 200 samples, solidifying the stability of the system to handle such a load (Figure 4A and 4B).



**Figure 3: Calibration curves for estimating the limits of detection (LOD) and quantitation (LOQ).** Tryptic peptides generated from recombinant SARS-CoV-2 NCAP standard protein were injected on the LC-MS system to generate calibration curves starting from 50 fmol on column and diluted 2-fold until 48 amol was achieved either in 0.1% formic acid as depicted in figure A. Figures B, C and D represent the drop in sensitivity of the LOD and LOQ when injected as a spike-in in a swab, oral fluid or saliva sample respectively. The sensitivity of the system was assessed based on the three peptides AYNVTQAFGR, ADETQALPQR and KADETQALPQR selected for final PRM method. The figures in the inset are the zoomed areas of the lower concentration data points.



**Figure 4: Testing the robustness of the LC-MS assay.** To test the stability and robustness of the existing PRM method, a stress test with 200 consecutive injections of saliva spiked with neat NCAP peptides was conducted where figure A depicts overall consistent peak area percentage for all the 6 peptides for the NCAP peptide AYNVTQAFGR. Figure B depicts the intensity and retention time variation of the same peptide over 200 injections.

**Table 2: Limits of detection and quantitation calculated for NCAP peptides on the existing LC-MS system in various matrices are represented below**

Protein	Matrix	Peptide	LOD (fmol on column)	LOQ (fmol on column)
NCAP	0.1% Formic acid	AYNVTQAFGR	0.17	0.85
		ADETQALPQR	0.37	1.1
		KADETQALPQR	0.26	1.3
	Artificial sputum	AYNVTQAFGR	1.6	8.0
		ADETQALPQR	0.66	3.3
		KADETQALPQR	6.3	32.1
	Spiked Saliva	AYNVTQAFGR	2.6	12.8
		ADETQALPQR	4.7	23.6
		KADETQALPQR	7.3	36.4
	Spiked Swab	AYNVTQAFGR	1.5	7.2
		ADETQALPQR	3.0	14.8
		KADETQALPQR	4.4	21.9

### Validation of PRM Assay using 50 patient samples

The final PRM method was validated using 25 positive and 25 negative patient samples. The samples had been analysed by either RT-PCR, SAMBA II or LumiraDx. RT-PCR provided a Cycle Time (Ct) value and any Ct <40 was considered as positive. The Simple AMplification-Based Assay (SAMBA) II nucleic acid testing system (SAMBA II) finds traces of viral genetic material and amplifies it a billion times [28] and LumiraDx is a microfluidic immunofluorescence assay for qualitative detection of nucleocapsid protein antigen [29]. The latter two methods do not provide a quantitation of viral load.

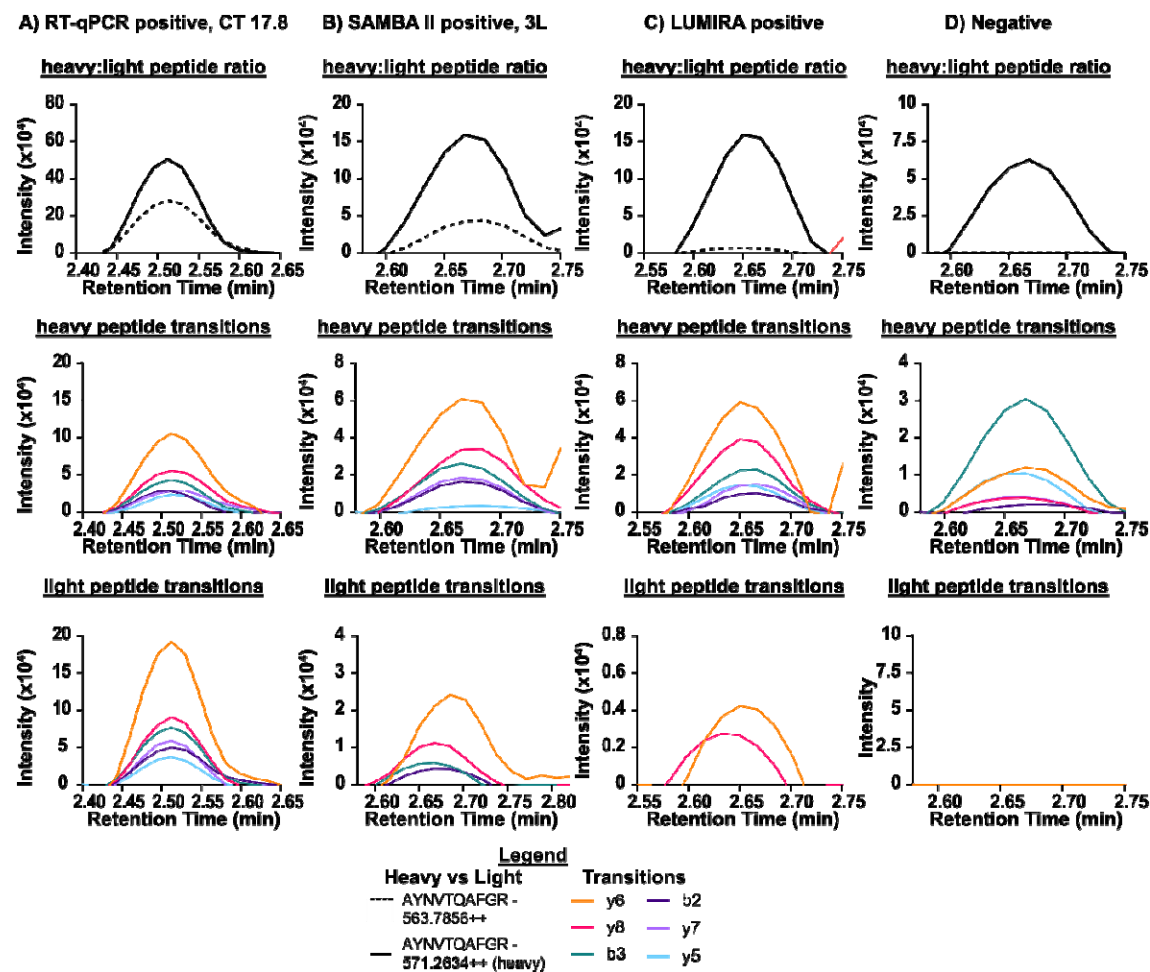
The samples were processed according to the optimized sample preparation protocol. BCA estimation of the samples revealed that the total concentration of the protein in the extraction buffer ranged between 3-5 mg/mL. Out of the total sample extracted from swab in 3 mL of VTM with 5% SDS buffer, only 50 µL sample (~200 µg) was taken for processing. ~10 µg sample was injected on column, where concentration of QconCAT in the sample was 10 fmol on column. Thus, ~1/1200<sup>th</sup> of the total sample was used for detection of the SARS-CoV-2 peptides using the present method.

The samples were attributed as positive only if they passed the following criteria: (i) At least two out of maximum six fragment ion transitions were detectable and (ii) The retention times matched that of the heavy QconCAT counterpart of the same peptide. The peptides that were



assigned as positive were then used for calculation of the probable absolute concentration from the total H/L ratios calculated by Skyline software.

Our PRM method was able to detect nine positive cases, three shown here and the other six in (Supplementary Figure 4), out of the 25 positive samples correctly (Figure 5), suggesting that patients with high viral load can be detected with this method. LUMIRA, qPCR and SAMBA II results for all 50 patient samples are given in (Supplementary Data 5).



**Figure 5: PRM transitions detected in patient samples.** A) Sample of a positive patient where the viral particles were detected by RT-qPCR with a CT value of 17.8. The concentration of the viral peptide AYNVTQAFGR was estimated to be ~25 fmol (corresponds to 7.5 pmol in the whole swab sample) by calculating the heavy to light ratio (H/L). B) and C) are patient samples deemed positive with SAMBA II and Lumira, respectively, which were also confirmed with our method as positives. D) is a negative patient sample.



349

## 350 Discussion

351 The presented MS-based assay aims to directly detect viral peptides in nasopharyngeal swab  
352 samples with faster processing times in a high-throughput manner. The detection is pursued  
353 from miniscule amounts of total samples unlike the nucleic acid-based strategies which utilise  
354 amplification. This is one of the major reasons attributing to the lower sensitivity of the  
355 present MS-based targeted assay compared to nucleic acid amplification-based methods such  
356 as PCR and SAMBA. While Lumira does not require amplification, it requires antibodies  
357 which can be non-specific and can lead to false positives. In order to achieve more sensitivity  
358 higher sample volume needs to be injected onto the system, which poses a challenge when  
359 using a nano-flow LC system.

360 Additionally, to provide a boost in sensitivity pre-enrichment methods such as SISCAPA  
361 [30], aptamers [31] or bead-based enrichments as utilized by Renuse et.al [15] could be  
362 incorporated in the sample preparation workflow, as the viral peptides have very low  
363 abundance when measured against a background of human saliva samples rich with high-  
364 abundant proteins like Lys C and Amylase. The other reason that contributes towards lowered  
365 detection sensitivity of the PRM assay could be assigned to the way the samples were  
366 collected and stored. In many of the samples, the traces of food particles and phlegm from  
367 individual patients were found, which made sample processing problematic. This highlights  
368 the fact that sample collection and storage for MS-based assays should be standardized, such  
369 as making sure the nasopharyngeal swab samples are taken by qualified staff, making sure  
370 the swabs touch only the back of the throat and the base of the tonsils avoiding any  
371 contamination. Also, efforts should be taken towards immediate processing of the samples  
372 after collection or stored at -20°C to reduce any protein degradation.

373 Stable isotope standards help in achieving absolute quantification [32]. One such standard is  
374 QconCAT (Quantification conCATemer), which is an artificially synthesized protein,  
375 generated by concatenation of proteotypic peptides. A heavy labelled QconCAT internal  
376 standard enables assessing sampling quality, sample preparation efficacy, instrument  
377 robustness, and absolute quantification [16]. Heavy labelled QconCAT synthesized  
378 specifically to contain NCAP and SPIKE proteins for SARS-CoV-2 along with other host  
379 proteins enabled the absolute quantification of SARS-CoV-2 peptides. Among the patient  
380 samples, one sample had been analysed by RT-PCR with a Ct value of 17.8, which indicates

a severe viral load. We calculated the amount for the viral NCAP peptide (AYNTQAFGR) to be 25 fmol on column. Assuming that each viral particle contains 300-350 NCAP molecules [33], this indicates that the swab contained approximately  $5.25 \times 10^8$  viruses. This is in the right order of magnitude with the theoretical calculations conducted by Puyvelde *et al* [16], where a correlation of number of viral particles from measured Ct values of plasmids was attempted. They estimated that a Ct value of 16 would amount to ~20 fmol NCAP/10  $\mu$ L sample corresponding to  $1.26 \times 10^{10}$  NCAP copies or  $4.2 \times 10^8$  viral particles (one RNA per virus) per 10  $\mu$ L sample. This shows good correlation of our PRM method with existing methods, as well as enables calculation of viral particles from absolute concentrations of viral proteins. Indeed, more rigorous studies with a greater number of patient samples with standardized sampling protocols are needed to establish a strong peptide concentration-viral particles correlation baseline. Nonetheless, the quantification of these peptides in the nasopharyngeal samples is a step in the right direction to assess not only the prognostic potential of the method but also determining the concentration range of the protein in correlation with the severity of the SARS-CoV-2 disease, which may prove helpful in designing treatments for disease management and thereby reducing complications and hopefully fatalities.

### **Future Perspectives:**

The global response to the Covid-19 pandemic has come a long way since its inception in late 2019. Lately, the death toll and the number of SARS-CoV-2 variants arising with the ongoing pandemic seem to be under control with the introduction of several vaccines, yet complete global immunization against Covid-19 is still far away. With the world starting to turn slowly towards normality, rigorous testing remains of prime importance until Covid-19 is completely eradicated which puts a burden on existing molecular testing methods. The present method could serve as an alternative for fast detection, where such mass spectrometric and chromatographic capabilities are available. With the little requirements for development of an MS-based testing method, it presents with a relative possibility of adapting the existing LC-MS method for detection of the existing and newly emerging SARS-CoV-2 variants as well as multiplexing with other respiratory viruses such as influenza.

The sensitivity of the present method has room for improvement by incorporating enrichment methods such as SISCAPA and immunoaffinity in the sample preparation. Additionally,

applying automated sample handling to the sample preparation workflow may further reduce the variability and improve the turnover times.

# **Acknowledgements:**

We would like to thank Sam Dhesi and Luke Wainwright from the Department of Health and Social Care as well as Perdita Barran for their support. We would like to thank all members of the Laboratory for Biomedical Mass Spectrometry for their support during this project. This work was funded by the UK Department of Health and Social Care. AN is funded by a Marie Skłodowska Curie ITN studentship within the European Union's Horizon 2020 research and innovation programme under the Marie Skłodowska-Curie grant agreement No. 861316. FS is funded by a BBSRC iCASE studentship (2306774). AG, TH and MT are funded through a Wellcome Investigator Award (215542/Z/19/Z)

**Author contributions:** AG, AN, TH, FS, AP performed experiments and data analysis. YT provided access to patient samples. AG, AN and MT wrote the manuscript with input of all authors.

**Conflict of interest:** None.

## References:

1. WHO COVID-19 Dashboard. Geneva: World Health Organization, 2020. Available online: <https://covid19.who.int/> (last cited: 11.03.2022).
2. The species Severe acute respiratory syndrome-related coronavirus: classifying 2019-nCoV and naming it SARS-CoV-2. *Nat. Microbiol.* 2020, 5536–544. 10.1038/s41564-020-0695-z.
3. Cui J, Li F, Shi ZL. Origin and evolution of pathogenic coronaviruses. *Nat Rev Microbiol.* 2019 Mar;17(3):181-192. doi: 10.1038/s41579-018-0118-9. PMID: 30531947; PMCID: PMC7097006.
4. Yoshimoto FK. The Proteins of Severe Acute Respiratory Syndrome Coronavirus-2 (SARS CoV-2 or n-COV19), the Cause of COVID-19. *Protein J.* 2020 Jun;39(3):198-216. doi: 10.1007/s10930-020-09901-4. PMID: 32447571; PMCID: PMC7245191
5. Assennato SM, Ritchie AV, Nadala C, Goel N, Tie C, Nadala LM, Zhang H, Datir R, Gupta RK, Curran MD, Lee HH. Performance Evaluation of the SAMBA II SARS-CoV-2 Test for Point-of-Care Detection of SARS-CoV-2. *J Clin Microbiol.* 2020 Dec 17;59(1):e01262-20. doi: 10.1128/JCM.01262-20. PMID: 33051242; PMCID: PMC7771448.
6. Nicol T, Lefevre C, Serri O, Pivert A, Joubaud F, Dubée V, Kouatchet A, Ducancelle A, Lunel-Fabiani F, Le Guillou-Guillemette H. Assessment of SARS-CoV-2 serological tests for the diagnosis of COVID-19 through the evaluation of three immunoassays: Two automated immunoassays (Euroimmun and Abbott) and one rapid lateral flow immunoassay (NG Biotech). *J Clin Virol.* 2020 Aug; 129:104511. doi: 10.1016/j.jcv.2020.104511. Epub 2020 Jun 15. PMID: 32593133; PMCID: PMC7295485.
7. Teymouri M, Mollazadeh S, Mortazavi H, Naderi Ghale-Noie Z, Keyvani V, Aghababaei F, Hamblin MR, Abbaszadeh-Goudarzi G, Pourghadamyari H, Hashemian SMR, Mirzaei H. Recent advances and challenges of RT-PCR tests for the diagnosis of COVID-19. *Pathol Res Pract.* 2021 May; 221:153443. doi: 10.1016/j.prp.2021.153443. Epub 2021 Apr 14. PMID: 33930607; PMCID: PMC8045416.
8. Krokhin O, Li Y, Andonov A, Feldmann H, Flick R, Jones S, Stroeher U, Bastien N, Dasuri KV, Cheng K, Simonsen JN, Perreault H, Wilkins J, Ens W, Plummer F, Standing KG. Mass spectrometric characterization of proteins from the SARS virus: a preliminary

- report. *Mol Cell Proteomics*. 2003 May;2(5):346-56. doi: 10.1074/mcp.M300048-MCP200. Epub 2003 May 29. PMID: 12775768; PMCID: PMC7780042.
9. Gouveia D, Grenga L, Gaillard JC, Gallais F, Bellanger L, Pible O, Armengaud J. Shortlisting SARS-CoV-2 Peptides for Targeted Studies from Experimental Data-Dependent Acquisition Tandem Mass Spectrometry Data. *Proteomics*. 2020 Jul;20(14):e2000107. doi: 10.1002/pmic.202000107. Epub 2020 Jun 21. PMID: 32462744; PMCID: PMC7267140.
10. Ihling C, Tänzler D, Hagemann S, Kehlen A, Hüttelmaier S, Arlt C, Sinz A. Mass Spectrometric Identification of SARS-CoV-2 Proteins from Gargle Solution Samples of COVID-19 Patients. *J Proteome Res*. 2020 Nov 6;19(11):4389-4392. doi: 10.1021/acs.jproteome.0c00280. Epub 2020 Jun 23. PMID: 32568543; PMCID: PMC7315851.
11. Nikolaev EN, Indeykina MI, Brzhozovskiy AG, Bugrova AE, Kononikhin AS, Starodubtseva NL, Petrotchenko EV, Kovalev GI, Borchers CH, Sukhikh GT. Mass-Spectrometric Detection of SARS-CoV-2 Virus in Scrapings of the Epithelium of the Nasopharynx of Infected Patients via Nucleocapsid N Protein. *J Proteome Res*. 2020 Nov 6;19(11):4393-4397. doi: 10.1021/acs.jproteome.0c00412. Epub 2020 Aug 19. PMID: 32786682; PMCID: PMC7640963.
12. Singh P, Chakraborty R, Marwal R, Radhakrishnan VS, Bhaskar AK, Vashisht H, Dhar MS, Pradhan S, Ranjan G, Imran M, Raj A, Sharma U, Singh P, Lall H, Dutta M, Garg P, Ray A, Dash D, Sivasubbu S, Gogia H, Madan P, Kabra S, Singh SK, Agrawal A, Rakshit P, Kumar P, Sengupta S. A rapid and sensitive method to detect SARS-CoV-2 virus using targeted-mass spectrometry. *J Proteins Proteom*. 2020 Aug 31:1-7. doi: 10.1007/s42485-020-00044-9. Epub ahead of print. PMID: 33132628; PMCID: PMC7457902.
13. Gouveia D, Miotello G, Gallais F, Gaillard JC, Debroas S, Bellanger L, Lavigne JP, Sotto A, Grenga L, Pible O, Armengaud J. Proteotyping SARS-CoV-2 Virus from Nasopharyngeal Swabs: A Proof-of-Concept Focused on a 3 Min Mass Spectrometry Window. *J Proteome Res*. 2020 Nov 6;19(11):4407-4416. doi: 10.1021/acs.jproteome.0c00535. Epub 2020 Aug 5. PMID: 32697082; PMCID: PMC7640971.
14. Saadi J, Oueslati S, Bellanger L, Gallais F, Dortet L, Roque-Afonso AM, Junot C, Naas T, Fenaille F, Becher F. Quantitative Assessment of SARS-CoV-2 Virus in Nasopharyngeal Swabs Stored in Transport Medium by a Straightforward LC-MS/MS Assay Targeting

- Nucleocapsid, Membrane, and Spike Proteins. *J Proteome Res.* 2021 Feb 5;20(2):1434-1443. doi: 10.1021/acs.jproteome.0c00887. Epub 2021 Jan 26. PMID: 33497234.
15. Renuse S, Vanderboom PM, Maus AD, Kemp JV, Gurtner KM, Madugundu AK, Chavan S, Peterson JA, Madden BJ, Mangalaparthi KK, Mun DG, Singh S, Kipp BR, Dasari S, Singh RJ, Grebe SK, Pandey A. A mass spectrometry-based targeted assay for detection of SARS-CoV-2 antigen from clinical specimens. *EBioMedicine.* 2021 Jul; 69:103465. doi: 10.1016/j.ebiom.2021.103465. Epub 2021 Jul 3. PMID: 34229274; PMCID: PMC8253671.
16. Van Puyvelde B, Van Uytendaele K, Tytgat O, Van Oudenhove L, Gabriels R, Bouwmeester R, Daled S, Van Den Bossche T, Ramasamy P, Verhelst S, De Clerck L, Corveleyn L, Willems S, Debunne N, Wynendaele E, De Spiegeleer B, Judak P, Roels K, De Wilde L, Van Eenoo P, Reyns T, Cherlet M, Dumont E, Debyser G, t'Kindt R, Sandra K, Gupta S, Drouin N, Harms A, Hankemeier T, Jones DJL, Gupta P, Lane D, Lane CS, El Ouadi S, Vincendet JB, Morrice N, Oehrle S, Tanna N, Silvester S, Hannam S, Sigloch FC, Bhangu-Uhlmann A, Claereboudt J, Anderson NL, Razavi M, Degroeve S, Cuypers L, Stove C, Lagrou K, Martens GA, Deforce D, Martens L, Vissers JPC, Dhaenens M. Cov-MS: A Community-Based Template Assay for Mass-Spectrometry-Based Protein Detection in SARS-CoV-2 Patients. *JACS Au.* 2021 Jun 28;1(6):750-765. doi: 10.1021/jacsau.1c00048. Epub 2021 May 3. PMID: 34254058; PMCID: PMC8230961.
17. Zougman A, Selby PJ, Banks RE. Suspension trapping (STrap) sample preparation method for bottom-up proteomics analysis. *Proteomics.* 2014 May;14(9):1006-0. doi: 10.1002/pmic.201300553. Epub 2014 Mar 26. PMID: 24678027.
18. Heunis T, Lamoliatte F, Marín-Rubio JL, Dannoura A, Trost M. Technical report: Targeted proteomic analysis reveals enrichment of atypical ubiquitin chains in contractile murine tissues. *J Proteomics.* 2020 Oct 30; 229:103963. doi: 10.1016/j.jprot.2020.103963. Epub 2020 Sep 6. PMID: 32898700; PMCID: PMC7567960.
19. Bekker-Jensen DB, Martínez-Val A, Steigerwald S, Rüther P, Fort KL, Arrey TN, Harder A, Makarov A, Olsen JV. A Compact Quadrupole-Orbitrap Mass Spectrometer with FAIMS Interface Improves Proteome Coverage in Short LC Gradients. *Mol Cell Proteomics.* 2020 Apr;19(4):716-729. doi: 10.1074/mcp.TIR119.001906. Epub 2020 Feb 12. PMID: 32051234; PMCID: PMC7124470.

20. Cox J, Mann M. MaxQuant enables high peptide identification rates, individualized p.p.b.-range mass accuracies and proteome-wide protein quantification. *Nat Biotechnol.* 2008 Dec;26(12):1367-72. doi: 10.1038/nbt.1511. Epub 2008 Nov 30. PMID: 19029910.
21. MacLean B, Tomazela DM, Shulman N, Chambers M, Finney GL, Frewen B, Kern R, Tabb DL, Liebler DC, MacCoss MJ. Skyline: an open-source document editor for creating and analyzing targeted proteomics experiments. *Bioinformatics.* 2010 Apr 1;26(7):966-8. doi: 10.1093/bioinformatics/btq054. Epub 2010 Feb 9. PMID: 20147306; PMCID: PMC2844992.
22. Mears MJ, Wallace MJ, Yount JS, Fowler LA, Jones PS, Mohler PJ, Wold LE. Viral transport media for COVID-19 testing. *MethodsX.* 2021; 8:101433. doi: 10.1016/j.mex.2021.101433. Epub 2021 Jun 30. PMID: 34226865; PMCID: PMC8242216.
23. Elinger D, Gabashvili A, Levin Y. Suspension Trapping (S-Trap) Is Compatible with Typical Protein Extraction Buffers and Detergents for Bottom-Up Proteomics. *J Proteome Res.* 2019 Mar 1;18(3):1441-1445. doi: 10.1021/acs.jproteome.8b00891. Epub 2019 Feb 20. PMID: 30761899.
24. Liebler DC, Zimmerman LJ. Targeted quantitation of proteins by mass spectrometry. *Biochemistry.* 2013 Jun 4;52(22):3797-806. doi: 10.1021/bi400110b. Epub 2013 Mar 27. PMID: 23517332; PMCID: PMC3674507.
25. Yu A, Zhao J, Peng W, Banazadeh A, Williamson SD, Goli M, Huang Y, Mechref Y. Advances in mass spectrometry-based glycoproteomics. *Electrophoresis.* 2018 Dec;39(24):3104-3122. doi: 10.1002/elps.201800272. Epub 2018 Oct 9. PMID: 30203847; PMCID: PMC6375712.
26. Krieger JR, Wybenga-Groot LE, Tong J, Bache N, Tsao MS, Moran MF. Evosep One Enables Robust Deep Proteome Coverage Using Tandem Mass Tags while Significantly Reducing Instrument Time. *J Proteome Res.* 2019 May 3;18(5):2346-2353. doi: 10.1021/acs.jproteome.9b00082. Epub 2019 Apr 12. PMID: 30938160.
27. Bache N, Geyer PE, Bekker-Jensen DB, Hoerning O, Falkenby L, Treit PV, Doll S, Paron I, Müller JB, Meier F, Olsen JV, Vorm O, Mann M. A Novel LC System Embeds Analytes in Pre-formed Gradients for Rapid, Ultra-robust Proteomics. *Mol Cell Proteomics.* 2018 Nov;17(11):2284-2296. doi: 10.1074/mcp.TIR118.000853. Epub 2018 Aug 13. PMID: 30104208; PMCID: PMC6210218.



28. Subsoontorn P, Lohitnavy M, Kongkaew C. The diagnostic accuracy of isothermal nucleic acid point-of-care tests for human coronaviruses: A systematic review and meta-analysis. *Sci Rep.* 2020 Dec 18;10(1):22349. doi: 10.1038/s41598-020-79237-7. PMID: 33339871; PMCID: PMC7749114.
29. Kohmer N, Toptan T, Pallas C, Karaca O, Pfeiffer A, Westhaus S, Widera M, Berger A, Hoehl S, Kammel M, Ciesek S, Rabenau HF. The Comparative Clinical Performance of Four SARS-CoV-2 Rapid Antigen Tests and Their Correlation to Infectivity In Vitro. *J Clin Med.* 2021 Jan 17;10(2):328. doi: 10.3390/jcm10020328. PMID: 33477365; PMCID: PMC7830733.
30. Razavi M, Frick LE, LaMarr WA, Pope ME, Miller CA, Anderson NL, Pearson TW. High-throughput SISCAPA quantitation of peptides from human plasma digests by ultrafast, liquid chromatography-free mass spectrometry. *J Proteome Res.* 2012 Dec 7;11(12):5642-9. doi: 10.1021/pr300652v. Epub 2012 Nov 19. PMID: 23126378.
31. Richards SL, Cawley AT, Cavicchioli R, Suann CJ, Pickford R, Raftery MJ. Aptamer based peptide enrichment for quantitative analysis of gonadotropin-releasing hormone by LC-MS/MS. *Talanta.* 2016 Apr 1; 150:671-80. doi: 10.1016/j.talanta.2016.01.006. Epub 2016 Jan 7. PMID: 26838458.
32. Schneider LV, Hall MP. Stable isotope methods for high-precision proteomics. *Drug Discov Today.* 2005 Mar 1;10(5):353-63. doi: 10.1016/S1359-6446(05)03381-7. PMID: 15749284.
33. Yao H, Song Y, Chen Y, Wu N, Xu J, Sun C, Zhang J, Weng T, Zhang Z, Wu Z, Cheng L, Shi D, Lu X, Lei J, Crispin M, Shi Y, Li L, Li S. Molecular Architecture of the SARS-CoV-2 Virus. *Cell.* 2020 Oct 29;183(3):730-738.e13. doi: 10.1016/j.cell.2020.09.018. Epub 2020 Sep 6. PMID: 32979942; PMCID: PMC7474903.