

1 **HormoneBayes: a novel Bayesian framework for the analysis of pulsatile** 2 **hormone dynamics.**

3 **Authors:** Margaritis Voliotis¹, Ali Abbara², Julia K Prague^{2,3,4}, Johannes D. Veldhuis⁵,
4 Waljit S Dhillon², Krasimira Tsaneva-Atanasova¹

5 1. Department of Mathematics and Living Systems Institute, College of Engineering, Mathematics
6 and Physical Sciences, University of Exeter, Exeter, UK.

7 2. Department of Metabolism, Digestion and Reproduction, Imperial College London, Hammersmith
8 Hospital, London, UK.

9 3. Department of Diabetes and Endocrinology, MacLeod Diabetes and Endocrine Centre, Royal
10 Devon and Exeter Hospital, Exeter, UK

11 4. College of Medicine and Health, University of Exeter, Exeter

12 5. Emeritus Mayo Clinic, Rochester, MI, USA

13 **Acknowledgements**

14 MV and KTA acknowledge the financial support of the EPSRC via grants EP/T017856/1 and
15 EP/N014391/1, and BBSRC via grants BB/S000550/1 and BB/S001255/1. JKP is supported by a
16 NIHR academic fellowship, MRC (MR/M024954/1), and Expanding Excellence in England (E3) -
17 Exeter Diabetes Research Unit. AA is supported by an NIHR Clinician Scientist Award (CS-2018-18-
18 ST2-002). WSD is supported by an NIHR Senior Investigator Award.

19 **Abstract**

20 The hypothalamus is the central regulator of reproductive hormone secretion. Pulsatile
21 secretion of gonadotropin releasing hormone (GnRH) is fundamental to physiological
22 stimulation of the pituitary gland to release luteinizing hormone (LH) and follicle
23 stimulating hormone (FSH). Furthermore, GnRH pulsatility is altered in common
24 reproductive disorders such as polycystic ovary syndrome (PCOS) and hypothalamic
25 amenorrhea (HA). LH is measured routinely in clinical practice using an automated
26 chemiluminescent immunoassay method and is the gold standard surrogate marker
27 of GnRH. LH can be measured at frequent intervals (e.g., 10 minutely) to assess
28 GnRH/LH pulsatility. However, this is rarely done in clinical practice because it is
29 resource intensive, and there is no user-friendly and accessible method for

30 **NOTE:** This preprint reports new research that has not been certified by peer review and should not be used to guide clinical practice. computational analysis of the LH data available to clinicians. Here we present

31 *hormoneBayes*, a novel open-access Bayesian framework that can be easily applied
32 to reliably analyze serial LH measurements to assess LH pulsatility. The framework
33 utilizes parsimonious models to simulate hypothalamic signals that drive LH dynamics,
34 together with state-of-the-art (sequential) Monte-Carlo methods to infer key
35 parameters and latent hypothalamic dynamics. We show that this method provides
36 estimates for key pulse parameters including inter-pulse interval, secretion and
37 clearance rates and identifies LH pulses in line with the current gold-standard
38 deconvolution method. We show that these parameters can distinguish LH pulsatility
39 in different clinical contexts including in reproductive health and disease in men and
40 women (e.g., healthy men, healthy women before and after menopause, women with
41 HA or PCOS). A further advantage of *hormoneBayes* is that our mathematical
42 approach provides a quantified estimation of uncertainty. Our framework will
43 complement methods enabling real-time *in-vivo* hormone monitoring and therefore
44 has the potential to assist translation of personalized, data-driven, clinical care of
45 patients presenting with conditions of reproductive hormone dysfunction.

46 **Introduction**

47 Pulsatile hormone dynamics are ubiquitous and play a crucial role in the regulation of
48 many bodily functions related to metabolism, stress, and fertility ^{1,2}. Hormones are
49 typically secreted in both a basal manner to maintain steady state levels, as well as
50 with superimposed interspersed transient bursts (pulses) ³. It is now established that
51 the pulsatile nature of hormonal secretion affects their interaction with receptors and
52 downstream effector action ⁴⁻⁶.

53 With regards to fertility, the hypothalamus is the central regulator of the reproductive
54 endocrine axis. Notably, gonadotropin releasing hormone (GnRH) is secreted in a
55 pulsatile manner, and seminal studies have demonstrated that this pulsatility is
56 fundamental for its action to stimulate GnRH receptors on pituitary gonadotropes ⁵.
57 Moreover, disturbances in GnRH pulsatility are observed in common reproductive
58 disorders including polycystic ovary syndrome (PCOS) in which GnRH pulsatility is
59 increased ⁷, and hypothalamic amenorrhea (HA) in which GnRH pulsatility is reduced
60 ⁸. However, despite this disparate alteration in GnRH pulsatility, differentiation of these
61 two common reproductive disorders, which may both present similarly with menstrual
62 disturbance, can be challenging ⁹. LH is measured routinely in clinical practice using
63 an automated chemiluminescent immunoassay method and is the gold standard
64 surrogate marker of GnRH. Furthermore, LH can be measured at frequent intervals
65 (eg 10minutely) to assess GnRH/LH pulsatility, and accurate assessment of LH
66 pulsatility could help facilitate diagnosis and treatment of patients presenting with
67 reproductive endocrine disorders ⁹. However, this is rarely done in clinical practice
68 because it is resource-intensive, inconvenient for patients, and there is a lack of user-
69 friendly methods for computational analysis of the LH data available to clinicians.

70 Analysis of hormone pulsatility is a challenging computational problem, primarily due
71 the stochastic nature of hormone dynamics and the consequent pulse-to-pulse
72 variability, but also due to extrinsic factors (such as measurement error) obscuring the
73 observed hormone dynamics ³. Several computational methods for the analysis of
74 endocrine data have been proposed in the literature ^{3,10-13}, and deconvolution analysis,
75 is the current gold-standard method for analyzing LH pulsatility in humans ³. However,
76 all methods lack an open-access, user-friendly interface that can be readily used by
77 clinicians.

78 To meet these challenges, we have developed HormoneBayes, a novel, open-access
79 Bayesian framework for the analysis of hormone pulsatility data. Unlike previous
80 methods, HormoneBayes uses a stochastic model, describing hormone levels in the
81 circulation incorporating measurement error, and leverages Bayesian statistics ¹⁴ to
82 infer model parameters and latent variable dynamics. We show that HormoneBayes
83 can be used to accurately identify LH pulses and estimates clinically relevant
84 measures such as inter-pulse intervals and secretion rates. The framework also
85 provides a handle on estimation uncertainty via Bayesian posterior distributions. We
86 showcase how this feature can be used to enable the understanding of alterations in
87 LH pulsatility by analyzing the effect of direct hypothalamic stimulation using the
88 neuropeptide kisspeptin on a subject-by-subject basis. We also demonstrate that
89 HormoneBayes can be used to analyze LH pulsatility in different clinical
90 contexts/reproductive states (including healthy men, women before and after
91 menopause, and women with reproductive disorders such as HA or PCOS).
92 Importantly, the framework comes with a user-friendly, open-access graphical
93 interface that make the core functionality of the framework easily accessible to
94 clinicians in the clinic.

95 **Results**

96 [Analyzing pulsatile hormone dynamics using the hormoneBayes framework](#)

97 The hormoneBayes framework allows inference of key physiological parameters
98 describing pulsatile hormone dynamics. The framework utilizes stochastic
99 mathematical models describing circulating hormone levels and state-of-the-art
100 Bayesian machinery to calibrate these models to data of hormone profiles and infer
101 model parameters. **Figure 1** presents a parsimonious model (a simple model with
102 great explanatory power) describing circulating LH levels. The model assumes that
103 there are two modes of LH secretion, namely pulsatile and basal. The former
104 corresponds to an on/off signal that randomly switches between two states
105 (corresponding to a high and a low activity) while the latter corresponds to a
106 continuous noisy signal. Furthermore, the model incorporates LH clearance as a linear
107 first order process leading to an exponential decay of LH levels following a pulse³. We
108 note that more detailed clearance models, such as the bi-exponential model³, could
109 be easily integrated. By considering the processes of LH release and clearance, the
110 model predicts LH circulating dynamics in terms of five key parameters that can be
111 recovered from data: 1. LH clearance rate; 2. maximum LH release rate; 3. strength
112 of the pulsatile signal relative to the basal signal; 4. mean time in the on state; 5. mean
113 time in the off state. Moreover, the model incorporates measurement error as an
114 additional parameter that is determined based on the assay coefficient of variation
115 (CV).

116 HormoneBayes relies on the Bayesian paradigm to extract information from the
117 observed data. Using the Bayes theorem, the method revises our prior beliefs
118 regarding model parameters by transforming the parameters' prior probability density
119 distributions into posterior distributions. Parameter prior distributions enable the user

120 to input context-specific information into the analysis, hence enhancing the flexibility
121 of the method to handle different datasets. For example, when dealing with data from
122 post-menopausal women the user could choose to adjust the parameter priors to
123 acknowledge a higher LH secretion rate and/or more sustained basal secretion.
124 **Figure 1** illustrates how the Bayesian machinery allows us to calibrate the model to
125 the data and extract information regarding model parameter and latent hypothalamic
126 signals with an estimate of certainty. As we explain in the sections to follow, this
127 information can be used to identify pulses; summarise the data (e.g., providing mean
128 and standard deviation estimates); and perform statistical tests.

129 Identifying LH pulses

130 Using data to infer the latent hypothalamic signal provides a transparent way to identify
131 pulses based on their likelihood under the model. As explained above, the model
132 assumes LH pulses are partly driven by an on/off hypothalamic signal. This latent
133 variable (i.e., inferred variable) takes two values indicating the 'on' (1) and 'off' (0) state
134 of the hypothalamic pulse generator, and therefore the expected posterior estimate
135 (inferred from LH profiling data) can be interpreted as the probability that at any given
136 time the hypothalamic pulse generator is 'on'. This quantitative measure for accessing
137 the likelihood of a pulse can significantly ease the job a clinician trying to decide
138 whether an upstroke in the LH profile represents a pulse or not. **Figure 2** illustrates a
139 representative example of an LH trace with two obvious pulses occurring at times
140 100min and 300min. These are indeed identified by inspecting the hypothalamic signal
141 profile which peaks at around those times. At time 200min a less pronounced bump in
142 LH could be indicative of an LH pulse, however the inferred pulsatile hypothalamic
143 signal remains well below 0.5, indicating that under the current model there is higher
144 probability that the bump is a measurement artefact rather than a pulse.

145 To validate our pulse identification method, we used a database of LH profiles
146 obtained from healthy pre-menopausal women and compared the identified pulses
147 with those obtained by the current gold-standard deconvolution method, which uses a
148 maximum likelihood approach to fit a secretion model to the data ³. Here, we identify
149 a pulse when the posterior probability that the hypothalamic signal is ‘on’ exceeds a
150 threshold value. We use 0.5 as the threshold value, which signifies there is higher
151 probability that the hypothalamic pulse generator is on (rather than off). This value
152 yields the highest agreement between hormoneBayes and the deconvolution method
153 (see supplementary material fig S4). We find that hormoneBayes agrees with the
154 deconvolution method in 77 out of 87 identified pulses (89%). Moreover, 13 pulses
155 identified by hormoneBayes were not identified by the deconvolution method. Overall,
156 this suggests a good agreement between the two methods, with hormoneBayes
157 having the added advantage of providing a measure for the likelihood of each pulse
158 that clinicians and researchers can use to inform their clinical decision making.

159 [Variation of model parameter within and across groups](#)

160 To test the applicability of hormoneBayes in different contexts we compile a database
161 of LH profiles from four groups with diverse LH dynamics (men, healthy pre-
162 menopausal women with regular menstrual cycles, post-menopausal women, women
163 with HA, and women with PCOS). As illustrated in Fig. 3, the model successfully
164 captures the differences in LH dynamics in all four groups. Moreover, the model allows
165 us to summarize LH data through model parameters and assess the variability across
166 and within groups. We find that two model parameters explain most of the variability
167 between groups, namely the maximum secretion rate and pulsatility strength (**Fig 3C**).
168 The first parameter describes how much LH can be secreted over time, whilst the
169 second parameter quantifies the strength of the pulsatile signal relative to the basal

170 signal. Based on these two parameters there is a strong distinction between women
171 with PCOS and women with HA, who have lower LH secretion rates and/or diminished
172 LH pulsatility strength (i.e., pulsatile signal is weak relative to the basal signal).
173 Furthermore, post-menopausal women display higher secretion rates compared to
174 pre-menopausal women but also reduced pulsatility strength (i.e., pulses are less
175 pronounced when higher level of LH are established post menopause). Interestingly,
176 healthy men and women illustrate a much lower parameter variability as compared to
177 HA and post-menopausal women, which could be indicative of various degrees of
178 severity of HA/PCOS and tighter LH regulation in healthy individuals of reproductive
179 age.

180 Discussion

181 We have presented HormoneBayes, a novel computational framework for analyzing
182 hormone pulsatility. The framework combines (i) mathematical models describing
183 hormone dynamics with (ii) computational Bayesian machinery for inferring model
184 parameters from data. Using a parsimonious mathematical model of LH secretion, we
185 have demonstrated the clinical utility of HormoneBayes in accurately analyzing LH
186 pulsatility data, identifying pulses, and summarizing data in terms of model parameters
187 to predict different clinical conditions/reproductive states on an individual patient level
188 basis.

189 HormoneBayes leverages the Bayesian paradigm to infer model parameters from the
190 data. The Bayesian approach means that hormoneBayes outputs a (posterior) density
191 distribution for model parameters that has an intuitive interpretation, i.e, it describes
192 the probability that parameters attain some value given the data. This enables the use
193 of posterior distributions for statistical testing, for example to assess the effect of
194 hormonal interventions on LH secretion parameters at the population level but also on
195 a subject-by-subject basis. We expect such personalized analysis to become
196 mainstream as measurement technologies mature enabling cheap sampling of
197 hormone levels in real time ¹⁵.

198 Ultimately, data analysis using HormoneBayes is as credible as the underlying model
199 used to describe hormonal dynamics. Here, we have used a parsimonious model that
200 assumes two modes of LH secretion, pulsatile and basal. This assumption is in par
201 with current physiological understanding of the system and the hypothalamic pulse
202 generator hypothesis ^{16,17}. Furthermore, to model LH circulation levels the model
203 assumes a linear clearance rate. At least one other model used for the analysis of LH
204 pulsatility has used more complex (multiple timescale) clearance dynamics, however

205 we expect this assumption should have a minimal impact for the purpose of assessing
206 LH pulsatility. Nevertheless, the modular design of HormoneBayes allows future
207 extensions of the model with the scope of comparing how well different models capture
208 LH dynamics as well as enabling the analysis of hormone dynamics beyond LH.

209 **Methods**

210 **LH datasets**

211 Participants included in five different clinical research studies (involving healthy men¹⁸,
212 healthy pre-menopausal women¹⁹, post-menopausal women²⁰, women with PCOS
213 and women with HA⁸) attended our clinical research facility for a series of 8 hour study
214 visits on separate days that included baseline (vehicle treatment) and active
215 intervention according to their relevant trial protocol as previously described^{8,18-20}.
216 Ethical approval for these studies was granted by: the Hammersmith and Queen
217 Charlotte's and Chelsea Hospitals Research Ethics Committee (registration number
218 05/Q0406/142)^{8,19}; the UK National Research Ethics Committee-Central London
219 (Research Ethics Committee number 14/LO/1098)¹⁸; and the West London Regional
220 Ethics Committee (15/LO/1481)²⁰. All studies were conducted according to Good
221 Clinical Practice Guidelines. Once introduced to the unit, a cannula was inserted into
222 a peripheral vein under aseptic conditions (time at least -30 minutes), through which
223 all subsequent blood samples were taken every 10 minutes from time 0 until 480
224 minutes. All participants were ambulatory and could eat and drink freely during the
225 study visit. In the kisspetin-54 study, participants received 8-hour iv infusions of vehicle
226 and 0.1 nmol kg⁻¹ hour⁻¹ kisspetin-54 at different visits. All blood samples were left to
227 clot for at least 30 minutes prior to centrifugation at 503 rcf for 10 minutes, after which
228 the serum supernatant was extracted and immediately frozen at -20°C prior to
229 subsequent analysis using an automated chemiluminescent immunoassay method
230 (Abbott Diagnostics, Maidenhead, UK) in batches after study completion. Reference
231 ranges were as follows: LH 4-14 IU/L; respective intra-assay and inter-assay
232 coefficients of variation were 4.1% and 2.7%; analytical sensitivity was 0.5 IU/L.

233

234 Stochastic model of LH

235 We used a discrete-time, stochastic model to describe pulsatile LH dynamics. The
 236 model comprises of three dynamical variables, P_t , B_t , and LH_t , that describe the
 237 pulsatile and basal hypothalamic signals and the LH concentration in circulation,
 238 respectively.

239 The pulsatile hypothalamic signal P_t can take two values: $H_t = 0$ corresponding to the
 240 ON state; and $H_t = 1$ corresponding to the OFF state. The stochastic dynamics of H_t
 241 are governed by the following probability matrix

		$H_{s+\delta t}$	
		0	1
H_s	0	$1 - \frac{1}{\tau_{ON}} \cdot \delta t$	$\frac{1}{\tau_{ON}} \cdot \delta t$
	1	$\frac{1}{\tau_{OFF}} \cdot \delta t$	$1 - \frac{1}{\tau_{OFF}} \cdot \delta t$

242 i.e., parameters τ_{ON} and τ_{OFF} govern the probabilities that the value of H will either flip
 243 or remain the same over the time interval $(s, s + \delta t)$.

244 The evolution of the basal hypothalamic signal, B_t , is described using a discrete time
 245 autoregressive model obeying the following equation

246

$$X_{t+\delta t} = X_t - \frac{\delta t}{2} X_t + \sqrt{\delta t} \cdot \varepsilon_t,$$

$$B_t = \frac{1}{1 + e^{-X_t}},$$

247 where ε_t is a normally distributed random variable with zero mean and unit variance.
 248 Note that both B_t and H_t are bounded in the interval $[0, 1]$.

249 The two hypothalamic signals drive LH secretion, and along with LH clearance dictate
 250 the circulating LH levels, LH_t . The equation describing the time evolution of LH_t , is

251
$$LH_{t+\delta t} = LH_t + [k(P_t \cdot f + B_t \cdot (1 - f)) - d \cdot LH_t] \cdot \delta t$$

252 where d denotes the clearance rate, k denotes the maximum secretion rate, and
253 parameter f (termed pulsatility strength) describes the relative strength of the two
254 hypothalamic signals. Finally, the model assumes measurement error in the form:

255
$$LH_t^{obs} = LH_t (1 + \eta_t)$$

256 where η_t is a normally distributed random variable with zero mean and std. deviation
257 equal to the CV of the assay. Throughout our analysis we have used $\delta t = 1$ min,
258 hence, assuming that the system dynamics do not change significantly over shorter
259 times.

260 $\cdot L^{-1}$

261 Bayesian inference

262 The hormoneBayes framework uses Bayesian inference to obtain model parameters
263 $\Theta = (\tau_{ON}, \tau_{OFF}, k, d, f)$ and latent variable (H_t, B_t) dynamics from LH profiling data D .
264 In particular, hormoneBayes solves the inference problem by sampling from the target
265 posterior distribution:

266
$$P(\Theta, H_t, B_t | D) = \frac{P(D, H_t, B_t | \Theta) \cdot P(\Theta)}{P(D)},$$

267 where $P(\Theta)$ is the prior parameter distribution; $P(D, H_t, B_t | \Theta) = P(D | \Theta, H_t, B_t) \cdot$
268 $P(H_t, B_t)$ is the likelihood of the data given the parameters; and $P(D) =$
269 $\int P(D, H_t, B_t | \Theta) \cdot P(\Theta)$ is the marginal likelihood or model evidence.

270 Sampling from the full posterior distribution is performed using a Gibbs sampler, which
271 is an iterative Monte Carlo Markov Chain (MCMC) scheme. The algorithm is initialised
272 with parameter values drawn from the prior distribution, i.e., $\Theta^0 \sim P(\Theta)$ and each
273 subsequent iteration, $i = 1, \dots, M$ involves two steps: (1) sampling latent variables

274 $(H_t, B_t)^i$ given the data, D , and the current parameter values θ^{i-1} and (2) sampling
275 new parameter values θ^i given the D and the latent variables $(H_t, B_t)^i$. The first step
276 is performed using Sequential Monte Carlo (SMC) with ancestral sampling. The
277 second step is further broken down into two parts, first parameters (τ_{ON}, τ_{OFF}) are
278 sampled using an adaptive Metropolis-Hastings sampler and then parameters (k, d, f)
279 are sampled using Hamiltonian Monte Carlo (HMC).

280 To access the effect of pharmacological interventions on LH pulsatility, hormoneBayes
281 allows the input of two LH profiling datasets, corresponding to control and perturbed
282 conditions. The inference task is then modified to allow inference of parameters $\theta_c =$
283 $(\tau_{ON}, \tau_{OFF}, k, d, f)$ for the control case as well of four additional parameters $\theta_p =$
284 $(p\tau_{ON}, p\tau_{OFF}, pk, pf)$ corresponding to the perturbed case. In mathematical terms the
285 target posterior is now given by

$$286 \quad P(\theta_c, \theta_p | D_c, D_p) = \frac{P(D_c, D_p | \theta_c, \theta_p) \cdot P(\theta_c, \theta_p)}{P(D_c, D_p)}$$

287 Sampling from the posterior is performed as described above. We quantify the effect
288 of the perturbation as the log-ratio of perturbed to control values.

289 Independent prior distributions were used for all model parameters throughout this
290 study: $\log_{10}\tau_{ON} \sim U(\log_{10}(5), \log_{10}(240))$ and $\log_{10}\tau_{OFF} \sim U(\log_{10}(5), \log_{10}(240))$,
291 based on the sampling rate (10min) and duration (480min) used in the LH profiling
292 studies; $\log_{10}(k) \sim \mathcal{N}(0, 5)$, set as a broad uninformative prior; $\frac{\log(2)}{d} \sim \mathcal{N}(80, 9.3)$, based
293 on LH half-life data; and $\log(f) \sim U(0, 1)$, to accommodate analysis of different LH
294 profiles with high or low pulsatility. Evaluation of the algorithm on synthetic dataset can
295 be found in supplementary material fig S1-3. An open access implementation of the

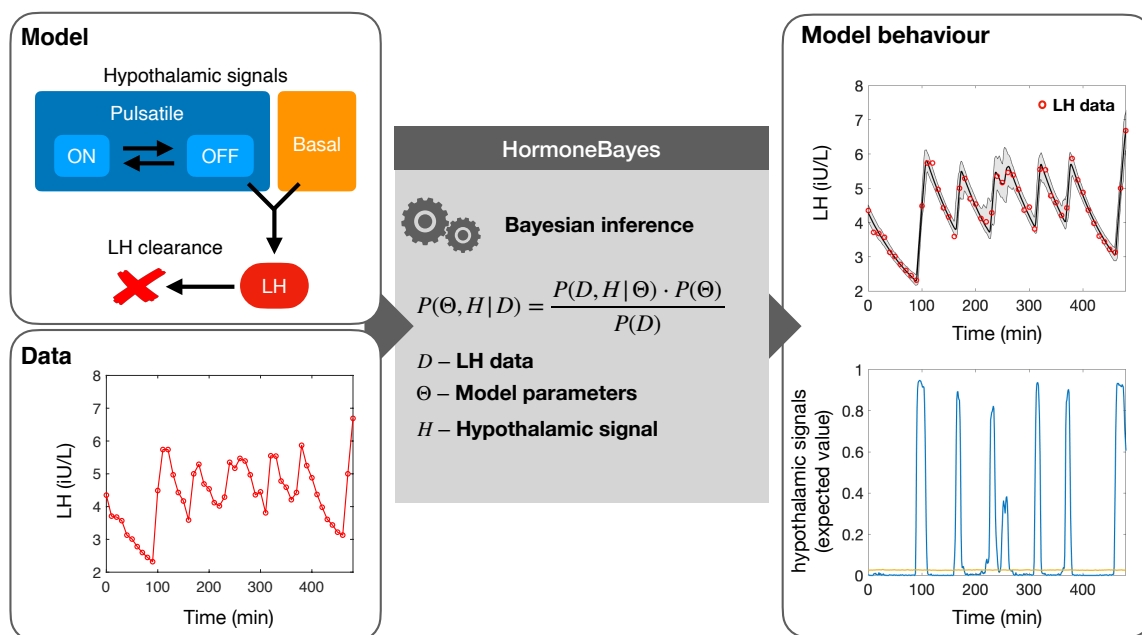
296 algorithm along with a supporting graphical interface can be downloaded from
297 <https://git.exeter.ac.uk/mv286/hormonebayes>.

298 References

299

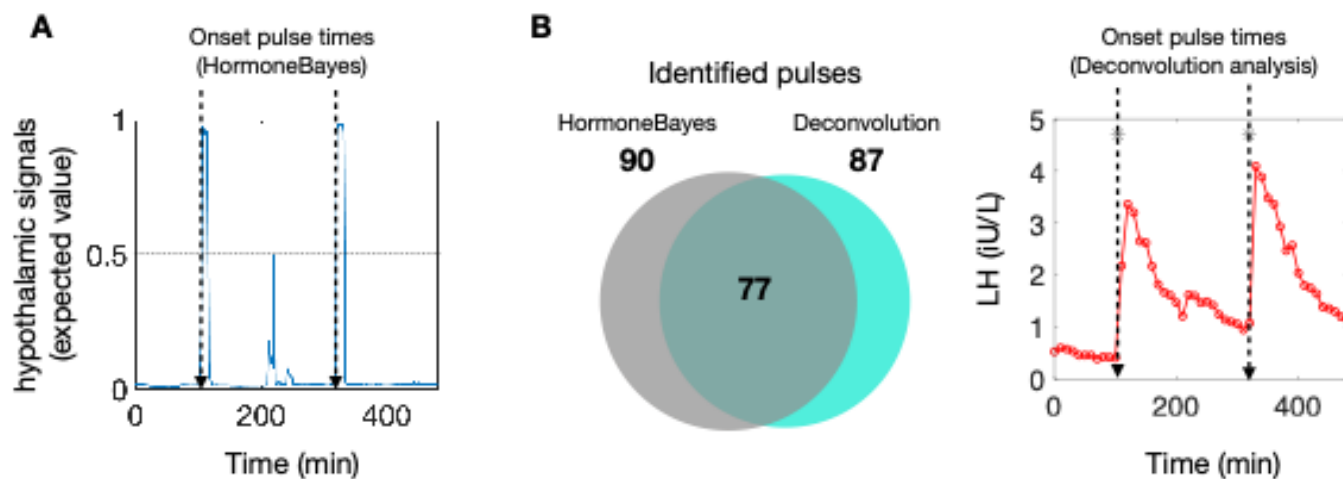
- 300 1. Zavala E, Wedgwood KCA, Voliotis M, et al. Mathematical Modelling of Endocrine
301 Systems. *Trends Endocrinol Metab* 2019; **30**(4): 244-57.
- 302 2. Le Tissier P, Fiordelisio Coll T, Mollard P. The Processes of Anterior Pituitary
303 Hormone Pulse Generation. *Endocrinology* 2018; **159**(10): 3524-35.
- 304 3. Keenan DM, Veldhuis JD. Pulsatility of Hypothalamo-Pituitary Hormones: A
305 Challenge in Quantification. *Physiology (Bethesda)* 2016; **31**(1): 34-50.
- 306 4. Lightman SL, Conway-Campbell BL. The crucial role of pulsatile activity of the HPA
307 axis for continuous dynamic equilibration. *Nat Rev Neurosci* 2010; **11**(10): 710-8.
- 308 5. Belchetz PE, Plant TM, Nakai Y, Keogh EJ, Knobil E. Hypophysial responses to
309 continuous and intermittent delivery of hypophysial gonadotropin-releasing hormone.
310 *Science* 1978; **202**(4368): 631-3.
- 311 6. McArdle CA, Roberson MS. Gonadotropes and Gonadotropin-Releasing
312 Hormone Signaling. In: Plant TM, Zeleznik AJ, eds. Knobil and Neill's physiology of
313 reproduction. 4th ed: Academic Press; 2015.
- 314 7. Abbara A, Dhillo WS. Targeting Elevated GnRH Pulsatility to Treat Polycystic Ovary
315 Syndrome. *J Clin Endocrinol Metab* 2021; **106**(10): e4275-e7.
- 316 8. Jayasena CN, Abbara A, Veldhuis JD, et al. Increasing LH pulsatility in women with
317 hypothalamic amenorrhoea using intravenous infusion of Kisspeptin-54. *J Clin Endocrinol*
318 *Metab* 2014; **99**(6): E953-61.
- 319 9. Phylactou M, Clarke SA, Patel B, et al. Clinical and biochemical discriminants
320 between functional hypothalamic amenorrhoea (FHA) and polycystic ovary syndrome
321 (PCOS). *Clin Endocrinol (Oxf)* 2020.
- 322 10. Granqvist E, Hartley M, Morris RJ. BaSAR-A tool in R for frequency detection.
323 *Biosystems* 2012; **110**(1): 60-3.
- 324 11. Veldhuis JD, Johnson ML. Cluster analysis: a simple, versatile, and robust algorithm
325 for endocrine pulse detection. *Am J Physiol* 1986; **250**(4 Pt 1): E486-93.
- 326 12. Vidal A, Zhang Q, Medigue C, Fabre S, Clement F. DynPeak: an algorithm for pulse
327 detection and frequency analysis in hormonal time series. *PLoS One* 2012; **7**(7): e39001.
- 328 13. Keenan DM, Veldhuis JD, Yang R. Joint recovery of pulsatile and basal hormone
329 secretion by stochastic nonlinear random-effects analysis. *Am J Physiol* 1998; **275**(6):
330 R1939-49.
- 331 14. Lesaffre E, Lawson A. Bayesian biostatistics. Chichester, West Sussex: Wiley,; 2012.
332 p. 1 online resource.
- 333 15. Liang S, Kinghorn AB, Voliotis M, et al. Measuring luteinising hormone pulsatility
334 with a robotic aptamer-enabled electrochemical reader. *Nat Commun* 2019; **10**(1): 852.
- 335 16. Voliotis M, Li XF, De Burgh R, et al. The Origin of GnRH Pulse Generation: An
336 Integrative Mathematical-Experimental Approach. *J Neurosci* 2019; **39**(49): 9738-47.
- 337 17. Clarkson J, Han SY, Piet R, et al. Definition of the hypothalamic GnRH pulse
338 generator in mice. *Proc Natl Acad Sci U S A* 2017; **114**(47): E10216-E23.
- 339 18. Narayanaswamy S, Prague JK, Jayasena CN, et al. Investigating the KNDy
340 Hypothesis in Humans by Coadministration of Kisspeptin, Neurokinin B, and Naltrexone in
341 Men. *J Clin Endocrinol Metab* 2016; **101**(9): 3429-36.
- 342 19. Narayanaswamy S, Jayasena CN, Ng N, et al. Subcutaneous infusion of kisspeptin-54
343 stimulates gonadotrophin release in women and the response correlates with basal oestradiol
344 levels. *Clin Endocrinol (Oxf)* 2016; **84**(6): 939-45.

345 20. Prague JK, Roberts RE, Comminos AN, et al. Neurokinin 3 receptor antagonism as a
346 novel treatment for menopausal hot flushes: a phase 2, randomised, double-blind, placebo-
347 controlled trial. *Lancet* 2017; **389**(10081): 1809-20.
348



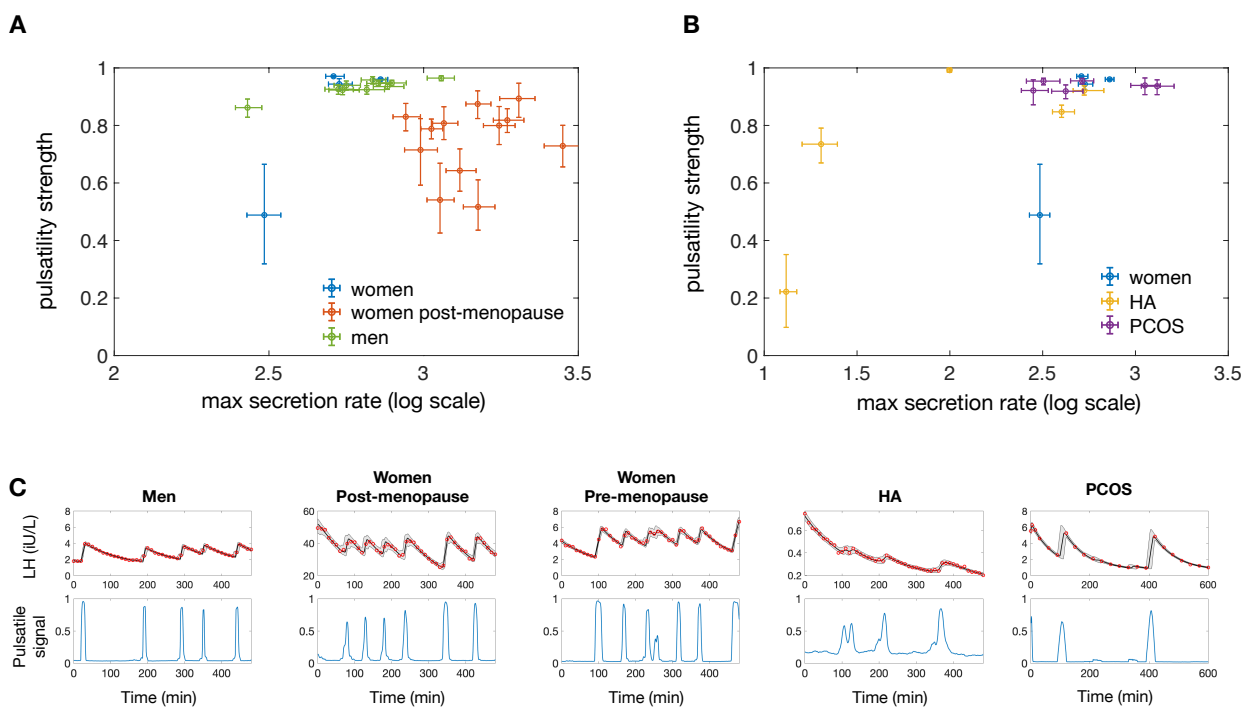
349

350 **Figure 1. HormoneBayes: a Bayesian framework for analyzing pulsatile LH**
 351 **dynamics.** The framework uses a parsimonious mathematical model to describe LH
 352 levels in circulation as the net effect of secretion and clearance. In the model secretion
 353 is driven by a basal hypothalamic signal and a pulsatile signal (mimicking the dynamics
 354 of the GnRH pulse generator which can be turned 'on' or 'off'). An efficient Markov-
 355 Chain Monte-Carlo (MCMC) method performs the Bayesian inference and extracts
 356 model parameters and latent hypothalamic dynamics, which are compatible with the
 357 observed data.



358

359 **Figure 2. Pulse identification using HormoneBayes.** (A) Pulses can be identified
360 using the expected value of the pulsatile hypothalamic signal, which can be interpreted
361 as the probability of a pulse at a given timepoint. Here, we mark the onset of a pulse
362 when the pulsatile hypothalamic signal crosses the 0.5 threshold, indicating that at this
363 point a pulse is the most likely event. (B) The majority of the identified pulses (89%,
364 77/87) are in line with those obtained using the deconvolution method. For the analysis
365 we used LH data obtained from healthy pre-menopausal women in early follicular
366 phase (n=16).



367

368 **Figure 3. HormoneBayes handles LH pulsatility analysis in different contexts.**

369 (A) Inferred pulsatility strength and maximum secretion rate parameters for different
370 individuals: healthy men (n=10); healthy post-menopause women (n=13); healthy pre-
371 menopausal women (n=4). (B) Inferred parameters for healthy pre-menopausal
372 women (n=4); women with PCOS (n=6) and women with HA (n=5) illustrating how the
373 assessment of LH pulsatility could help facilitate diagnosis of patients presenting with
374 reproductive endocrine disorders. (C) Representative fits of the model are given for
375 one subject in each dataset.