

Methadone Distribution Increased from 2010 to 2019 for Opioid Use Disorder Treatment in the US

Amy L. Kennalley MBS¹, John A. Furst Jr. BS¹, Nicholas J. Mynarski BS¹, Kenneth
L. McCall PharmD², Brian J. Piper PhD^{1,3}

¹Department of Medical Education, Geisinger Commonwealth School of Medicine,
Scranton, PA, 18510

²Department of Pharmacy Practice, University of New England, Portland, ME,
04103

³Center for Pharmacy Innovation and Outcomes, Forty Fort, PA, 18704

Abstract

Objectives: To identify US prescription trends in methadone distribution for OUD from 2010 to 2020. **Methods:** The weight of methadone in grams distributed to OTPs per state was derived from the US Drug Enforcement Administration's Automated Reports and Consolidated Ordering System. Methadone was adjusted for state population and compared across all fifty states and Washington DC from 2010 to 2020. **Results:** The overall distribution of methadone to OTPs significantly ($P < 0.0001$) increased from 2010 to 2019 (+61.0%) and from 2015 to 2020 (+26.22%). The states with the highest percent change from 2010 to 2020 were Montana (+897.02%), Alaska (+421.11%), and Vermont (+353.67%). In contrast with prior increase of distribution, from 2019 (pre-COVID-19 pandemic) to 2020 (during pandemic), there was no significant change in the distribution of methadone to OTPs (-0.09%). Ohio (+26.02%) significantly increased while Alabama (-21.96%), New Hampshire (-24.13%) and Florida (-28.97%) significantly decreased methadone relative to the national mean. **Conclusions:** This investigation revealed two trends related to methadone distribution in the US: increased utilization over the past decade and a plateau in utilization from 2019 to 2020. Policies are needed to remove access barriers to methadone treatment during the COVID-19 pandemic in order to reduce the worsening crisis of opioid overdoses in the US.

Introduction

The United States (US) Food and Drug Administration (FDA) has approved methadone, buprenorphine, and naltrexone as treatments for Opioid Use Disorder (OUD) (1). Methadone is a long acting synthetic opioid used to treat OUD through maintenance therapy in opioid treatment programs (OTP) (1-3). There have been several policy changes impacting OUD care during the COVID-19 pandemic.

Methadone Take-Home doses have been expanded to 28 days for stable patients and 14 days for less stable patients, urine analyses requirements have been relaxed, and telemedicine has been expanded for established patients (4-5). However, unlike for buprenorphine, starting methadone required an in-person visit. Prior research supporting the use of methadone for OUD frequently required the administration of counseling in conjunction with methadone treatment, however, the pandemic has also led to the relaxation of these counseling requirements (6).

Methadone treatment, though efficacious for OUD, is not without serious adverse effects like all opioids. Studies show that pregnant mothers using methadone for OUD can cause fetal dependence and may alter the white matter of the newborn's brain (2)(7-8). An alternative to methadone, buprenorphine, has also raised safety concerns. For example, a recent FDA safety concern issued in January 2022 warned that the oral formulation has been associated with over 300 dental problems documented since its release in 2002 (9). In addition to adverse effects, a study conducted between 2004 and 2015 revealed that buprenorphine is widely unavailable to those who are neither wealthy nor white, with Black patients having a statistically reduced probability of receiving a prescription (10). Treatment with methadone, on the other hand, has been

demonstrated to be superior to buprenorphine in reducing criminal activity, HIV infection, hepatitis, and mortality (2)(11-14). Additionally, a Cochrane Review concluded that methadone was superior to buprenorphine in retaining patients in treatment (15).

There have been over one-million drug overdoses in the US since the start of the opioid epidemic (16). The COVID-19 pandemic has placed tremendous stress on the health care system including the delivery of OUD treatments. Moreover, from April 2020 to April 2021, the number of drug overdoses in the United States exceeded one-hundred thousand, a +28.5% increase over the previous year (17). With a 60% rise in overdoses compared to the previous year, May 2020 has been the deadliest month in record (18). These massive increases in overdoses point to a failure in treating patients for OUD during the COVID-19 pandemic. A cross-sectional study, conducted from May to June 2020 in the US and Canada, identified a barrier to opioid treatment during the COVID-19 pandemic due to methadone clinics not accepting new patients in over 10% of clinics. Most importantly, new patients wishing to initiate methadone treatment were faced with this barrier in 20% of clinics (19). Similarly, prior to the pandemic, both methadone and buprenorphine-based OTPs were found to be effective in US jails and prisons; however, following the pandemic, these OTPs have been discontinued (20-21). Together, it is very important to examine the changes in methadone distribution during the COVID-19 pandemic and determine whether there are regional disparities in access to this evidence-based pharmacotherapy.

Methods

Procedures

The distribution amounts of methadone (in grams) were obtained from the Drug Enforcement Administration's (DEA) Automated Reports and Consolidated Ordering System (ARCOS) yearly drug summary reports for the years 2010, 2015, 2019 and 2020. ARCOS is a federal program mandated by the 1970 Controlled Substances Act to track the distribution of DEA controlled substances from the following—pharmacies, hospitals, practitioners, teaching institutions, mid-level practitioners, and OTPs. Previous pharmacoepidemiologic studies have utilized the ARCOS database (22-24). Methadone prescriptions distributed to OTPs were classified as an OUD treatment. The number of OTPs per state were also obtained from ARCOS yearly drug summary reports for the years 2010, 2015, 2019 and 2020. The state population estimates, including the District of Columbia (DC), were derived from the US Census Bureau's Annual Estimates of the Resident Population for the US (25). The US Territories were examined elsewhere and are not included in Figures 1-5 (26). As the full-year of 2021 was unavailable when data-analysis was completed (2/2022), estimated distribution was determined by doubling the values for the first two-quarters. This study was approved by the institutional review boards of the University of New England and Geisinger.

Data Analysis

The percent change of methadone distribution for OUD was compared between states for time spans of ten years, five years and one year respectively. The distribution methadone, corrected for population, compared between years—2010 and 2020, 2015 and 2020, and 2019 and 2020 were considered significant if the t-test indicated $P <$

0.05. Any state with percent changes greater than ± 1.96 SDs from the national average percent change was considered statistically significant. The number of OTPs per one million persons per state between years—2010 and 2015, 2010 and 2020, 2015 and 2020—were considered significantly significant if the t-test indicated $P < 0.05$.

Heatmaps created using JMP version 16.2.0. Figures and data analysis completed using Microsoft Excel and GraphPad Prism version 9.3.0.

Results

Overall, the total volume of methadone distributed to OTPs in the US increased over a ten-year time span. The amount distributed to OTPs was 8.62 metric tons in 2010, 10.88 in 2015 (+26.3%), and 13.03 in 2020 (+19.7%). These overall changes reflect increases of methadone for OUD in the vast majority of states. More specifically, the national distribution of methadone for OUD from 2010 to 2020 increased by +96.96% (SD=146.64%) on average with forty-three states showing an increase and five states a decrease. A t-test revealed a significant increase (+61.8%) from 2010 to 2019 ($P < 0.0001$) and by +61.0% from 2010 to 2020 ($P < 0.0001$). From 2010 to 2020, there was a large (> 1.5 SDs) increase in Vermont (+353.67%), and significant elevations (> 1.96 SDs, $P < 0.05$) in Alaska (+421.11%) and Montana (+897.02%) relative to the average (Figure 1).

Examination of 2015 relative to 2020 revealed the national average methadone distribution for OUD increased by +26.22% (SD=50.38%), with thirty-eight states increasing and eleven states decreasing. A t-test again revealed a significant ($P < 0.0001$) increase. There were significant increases ($P < 0.05$) in Alaska (+135.34%) and

Mississippi (+311.48%) relative to the national mean (Figure 2).

However, from 2019 to 2020 (i.e., pre- to post- COVID-19 pandemic), the distribution of methadone was stable (-0.091%, SD = 10.81%). Slightly over half (twenty-eight) of states showed an increase and twenty-two states exhibited a decrease. A t-test indicated there was no significant ($P = 0.76$) difference between 2019 and 2020. Examination of specific states revealed an increase in Kentucky (+18.68%) and a significant increase ($P < 0.05$) in Ohio (+26.02%) relative to the national mean. There were appreciable decreases in Nebraska (-16.6%), South Dakota (-17.27%), and Mississippi (-20.53%), and significant decreases ($P < 0.05$) in Alabama (-21.96%), New Hampshire (-24.13%) and Florida (-28.97%) relative to the national mean (Figure 3). Provisional analysis revealed that distribution in 2021 was 4.9% lower than 2019 and 5.0% lower than 2020 (Supplemental Figure 1A).

The average methadone distribution in the US for OUD was 46.03 mg/person (SD 35.47) in 2020. There was significantly more ($P < 0.05$) distributed in Vermont (115.7 mg/person), Maryland (120 mg/person), Connecticut (132.7 mg/person), Delaware (151.5 mg/person), and Rhode Island (157.1 mg/person) relative to the national mean (Figure 4).

The total number of OTPs distributing methadone increased +18.6% from 2010 (1,139) to 2015 (1,351), peaked in 2020 (1,726) and subsequently declined -5.2% in 2021 (1,637, Supplemental Figure 1B). The number of OTPs per 1 million persons per state significantly increased ($P < 0.0001$) from 2010 to 2020. A t-test indicated that 2010 to 2015, 2010 to 2020, and 2015 to 2020 were each significantly different ($P < 0.0001$). However, nine states had fewer OTPs in 2020 relative to 2015 or 2010 (Arkansas,

Hawaii, Kansas, Maine, Minnesota, Nebraska, South Dakota, Vermont, and Washington DC). One state (Wyoming) does not have a single OTP (Table 1)(Figure 5).

Discussion

The key finding of this study was that the pronounced and significant increase in methadone distribution to OTPs for OUD over the past decade has reversed with a non-significant decrease (-0.09%) from 2019 to 2020 (24). Preliminary analysis reveals further declines (5%) in 2021. Following this trend, there were also significant increases in the number of OTPs per one million persons per state from 2010 to 2020. These findings point to the overwhelming prevalence of OUD in the US and the necessity for more OTPs to combat the escalating problem. Eight states showed a reduction in OTPs from 2015 to 2020 (Vermont, Maine, Kansas, Minnesota, Hawaii, Arkansas, Nebraska, and South Dakota) which could be due to funding or policies for OTPs in the state.

Looking at how the COVID-19 pandemic affected OUD from 2019 to 2020, it appears methadone distribution to OTPs did not increase significantly. Poison control reports involving intentional methadone exposure showed a subtle (+5%) but significant, increase during this period (27). In addition, the National Center for Health Statistics (NCHS) of the Centers for Disease Control and Prevention (CDC) reported that drug overdose mortality increased by +31% between 2019 and 2020. However, the rate of methadone overdose deaths remained low with no significant increase suggesting no change in methadone misuse during the COVID-19 pandemic (28). During the ongoing COVID-19 pandemic, this highlights the importance of methadone treatment, as well as safe storage, and the need for increased availability to prevent opioid overdoses.

This study reveals the importance of policy change as it is apparent there is an excessive need for more access to OUD therapy, specifically methadone treatment, in the US. The Pew Report states that over 400,000 people in the US received methadone from an OTP pre-pandemic (2019) with over 90% located in urban areas, making it challenging for rural patients to make the daily trip to receive their medication (29). In March 2020, SAMHSA released guidelines allowing the regulatory authorities of all states to request blanket exceptions to allow OTP patients to take home doses of methadone and buprenorphine (30). These guidelines were extended in November 2021, and many providers and public health researchers are calling for these take home dosage rules to be continued post-pandemic (31-32). The number of pharmacies which distributed buprenorphine was 34-fold greater in 2021 than the OTPs that distributed methadone. It is currently curious that there are more restrictions in the US for prescribing methadone than for other Schedule II substances like fentanyl or oxycodone. Overcoming the “Not in my Backyard” (NIMBY) stigma surrounding OTPs is not a trivial undertaking (33). There is no shortage of strategies to bring the US more in-line with other Western countries like supervised administration in pharmacies, primary care providers, or with mobile units (13)(19)(34).

The strengths of this report include novel and timely data from ARCOS which is comprehensive for both distribution and number of distributors. Potential caveats and limitations stem from the fact that methadone distribution is reported in ARCOS by weight rather than prescriptions. Importantly, other pharmacoepidemiological research that compared another Schedule II substance from ARCOS to a state Prescription Drug Monitoring Program identified a high correspondence ($r = +.985$) (22). The infrequency

of methadone OTPs across rural states like Wyoming (253k km²), South Dakota (200k km²), and Nebraska (200 km²) is an important finding. However, prior research found that another rural state, Maine, which ranked tenth in the US, had three-OTPs in a single thirty-thousand-person city (Bangor) and none in other areas in northern Maine (35). The non-homogenous distribution within states should also be a concern for policy makers. Future research should also be focused on determining which patient subgroups were most impacted by the reversal in methadone distribution. As the number of pharmacies nationally distributing buprenorphine decreased (-4.7%) from 2019 to 2021, further research should evaluate if both methadone and buprenorphine continue to be underutilized in the post-COVID-19 pandemic period.

Conclusions

In conclusion, this study identified a reversal over the past-decade in the distribution of methadone for OUD in the US. The pronounced geographical disparities, particularly in rural and western states in OTP is a long-standing concern. The many policy accommodations to COVID-19 may present an important opportunity to determine which factors most impact the accessibility, adherence, and efficacy of methadone.

Acknowledgments

Thank you to Iris Johnston for providing access to journal articles.

Table 1. Number of opioid treatment programs per state per one million persons.

State	2010	2015	2019	2020
Rhode Island	16.1	16.1	20.8	21.0
Maryland	9.8	11.4	14.2	14.4
Delaware	6.7	10.6	15.4	14.1
Vermont	11.2	14.4	14.4	12.4
Massachusetts	7.9	9.1	11.2	12.1
Connecticut	10.1	10.3	12.1	11.9
New Mexico	4.8	6.7	8.1	11.3
Arizona	5.0	5.7	8.4	9.2
North Carolina	3.8	5.1	7.3	7.9
Maine	6.8	9.0	7.4	7.3
New Hampshire	4.6	6.0	6.6	7.3
District of Columbia	8.3	5.9	8.5	7.3
Illinois	5.1	5.6	7.2	7.2
Georgia	4.7	6.3	6.8	7.0
Pennsylvania	5.4	5.8	7.0	6.9
Kentucky	3.0	3.4	6.3	6.2
New York	5.7	5.3	6.3	6.0
Iowa	1.3	2.2	6.3	5.6
Utah	3.6	4.4	5.0	5.5
Alaska	2.8	5.4	5.5	5.5
Oklahoma	3.7	3.6	4.8	5.3
Oregon	3.4	3.7	4.7	5.2
Nevada	4.4	4.5	4.5	5.2
West Virginia	4.9	4.9	5.0	5.0
Colorado	2.2	2.6	4.3	4.8
Ohio	1.5	1.8	3.8	4.7
New jersey	0.1	3.7	4.2	4.7
South Carolina	1.9	3.7	4.3	4.7
Alabama	2.9	4.5	4.5	4.6
Virginia	2.1	3.6	4.9	4.5
Michigan	3.3	4.3	4.7	4.5
California	3.8	3.8	4.0	4.0
Washington	3.0	3.1	3.9	3.9
North Dakota	0.0	0.0	3.9	3.9
Wisconsin	2.3	3.0	3.6	3.7
Montana	2.0	2.9	3.7	3.7
Indiana	2.2	2.1	3.0	3.4
Texas	3.3	3.2	3.3	3.3
Kansas	2.4	3.1	3.1	3.1
Florida	1.3	2.6	2.8	2.9
Minnesota	1.5	3.3	2.8	2.8
Hawaii	2.9	2.8	2.8	2.7
Missouri	1.7	2.5	2.6	2.6
Tennessee	1.9	1.8	1.9	2.3
Idaho	1.9	1.8	2.2	2.2
Louisiana	1.8	2.1	2.2	2.1
Arkansas	1.0	2.0	2.3	2.0
Mississippi	0.3	0.3	1.7	1.7

Nebraska	1.6	1.6	1.6	1.5
South Dakota	0.0	1.2	1.1	1.1
Wyoming	0.0	0.0	0.0	0.0
Mean	3.8	4.6	5.6	5.7

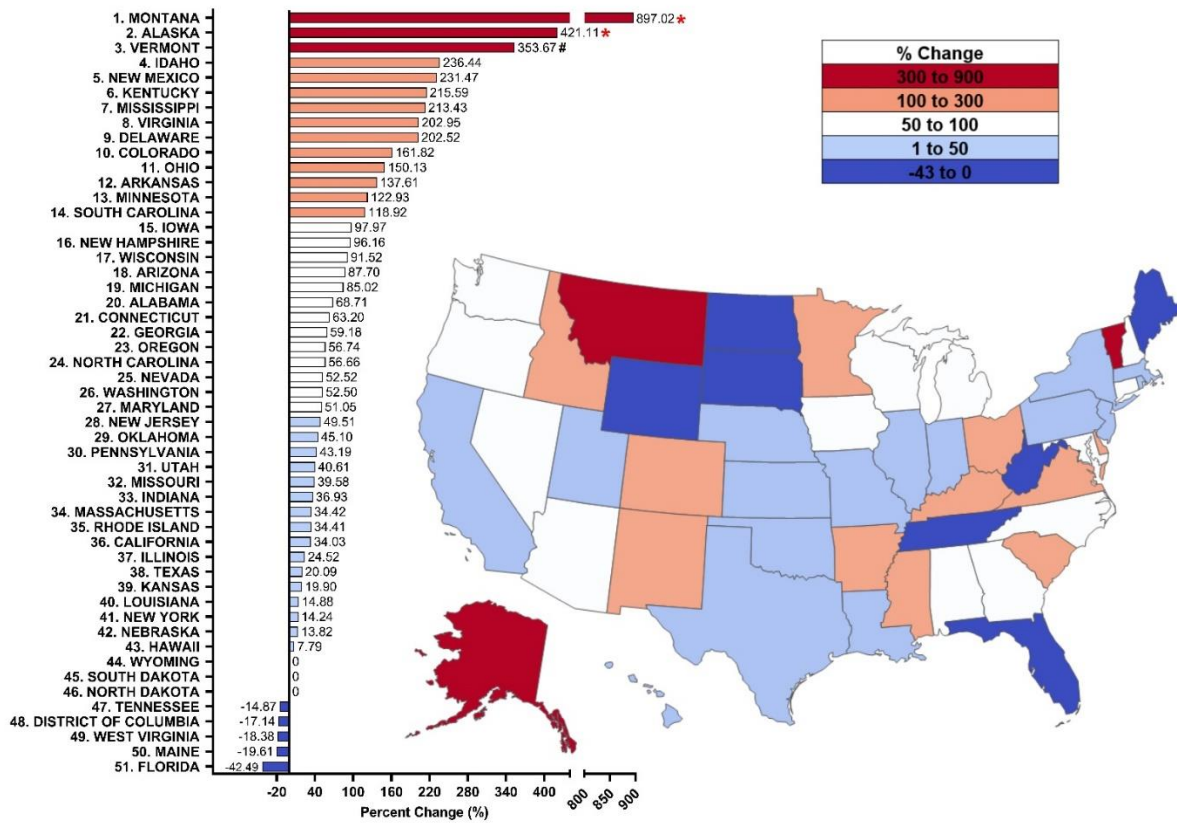


Figure 1. Percent change from 2010 to 2020 in methadone distribution as reported by the Drug Enforcement Administration’s Automated Reports and Consolidated Ordering System for Opioid Use Disorder. Percent change between 1.5 SDs and 1.96 SDs from the mean (+96.96%, SD = 146.64%), indicated with a #. Percent change > ±1.96 SD from the mean was considered significant (*p < 0.05).

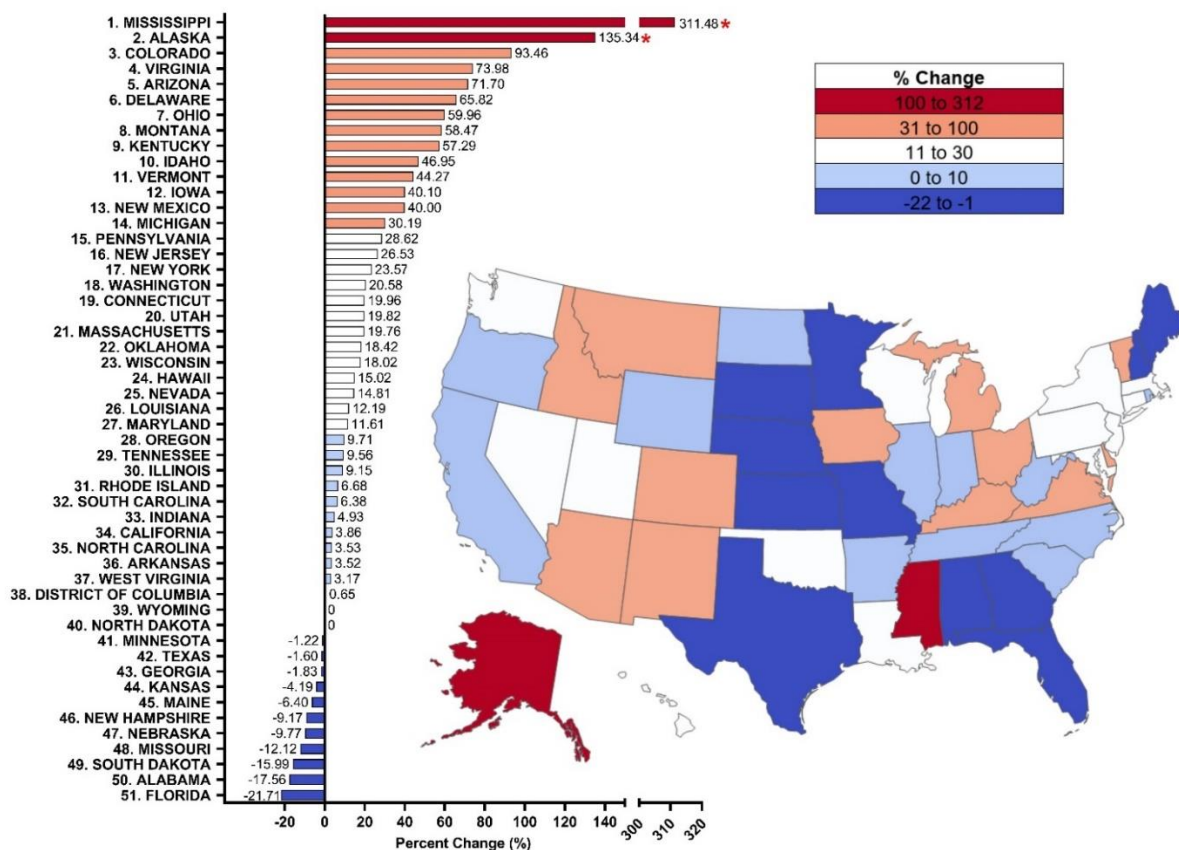


Figure 2. Percent change from 2015 to 2020 in methadone distribution as reported by the Drug Enforcement Administration’s Automated Reports and Consolidated Ordering System for Opioid Use Disorder. Percent change between 1.5 SDs and 1.96 SDs from the mean (+26.22%, SD = 50.38%), indicated with a #. Percent change > ±1.96 SD from the mean was considered significant (*p < 0.05).

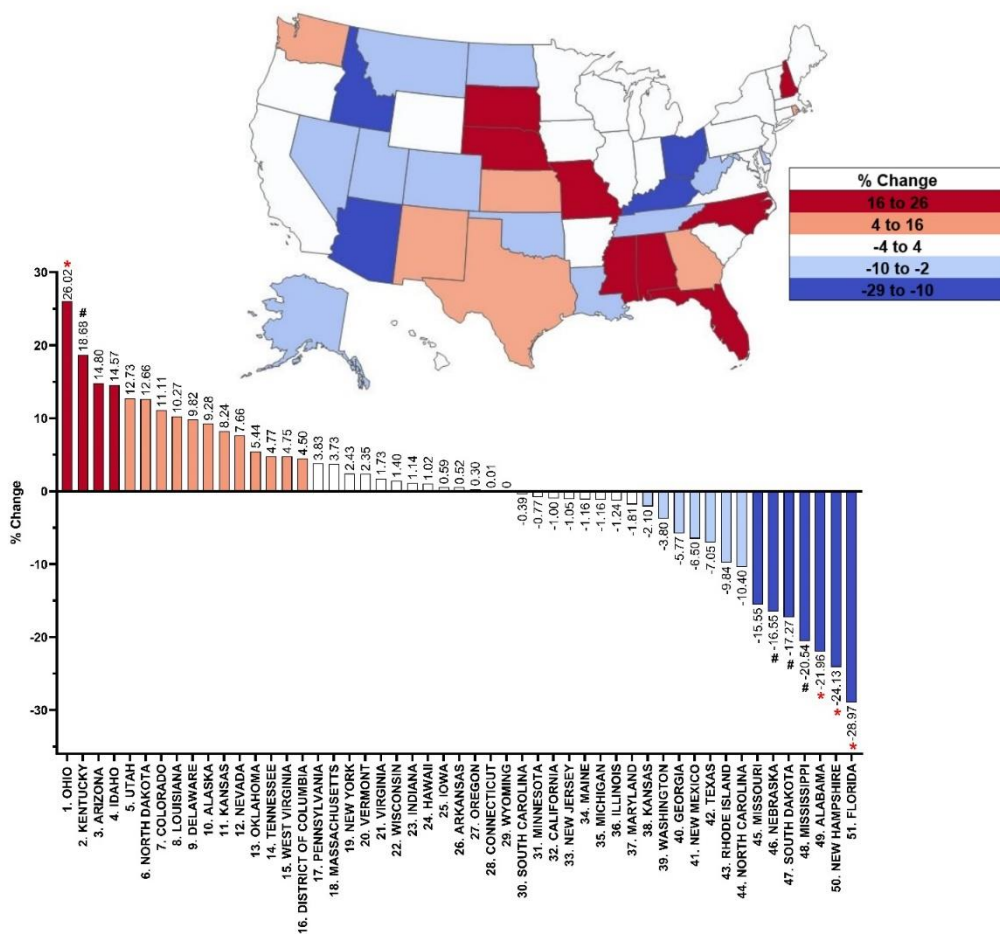


Figure 3. Percent change from 2019 to 2020 in methadone distribution as reported by the Drug Enforcement Administration's Automated Reports and Consolidated Ordering System for Opioid Use Disorder. Percent change between 1.5 SDs and 1.96 SDs from the mean (+0.09%) (SD 10.81), indicated with a (#). Percent change ± 1.96 SD from the mean considered significant (* $p < 0.05$).

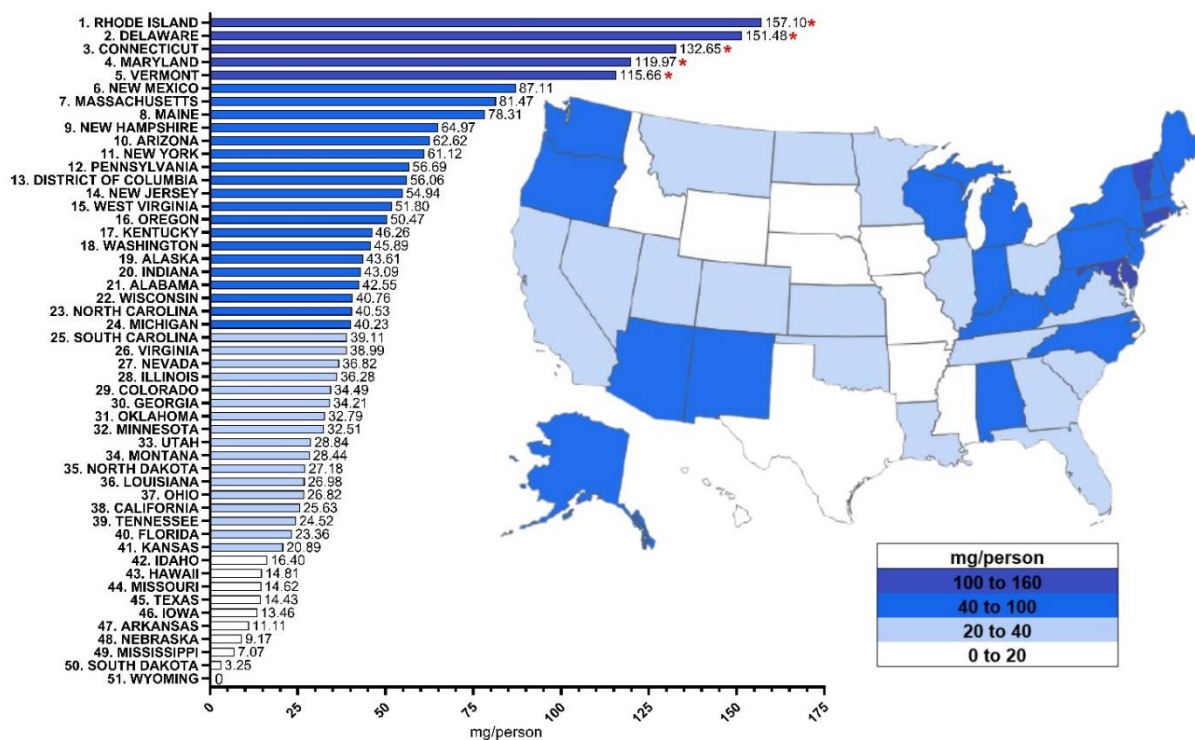


Figure 4. Methadone distribution in 2020 as reported by the Drug Enforcement Administration’s Automated Reports and Consolidated Ordering System for opioid use disorder in mg per person per state. Values ± 1.96 SD from the US mean (46.03 mg/person) (SD 35.47) considered significant (* $p < 0.05$).

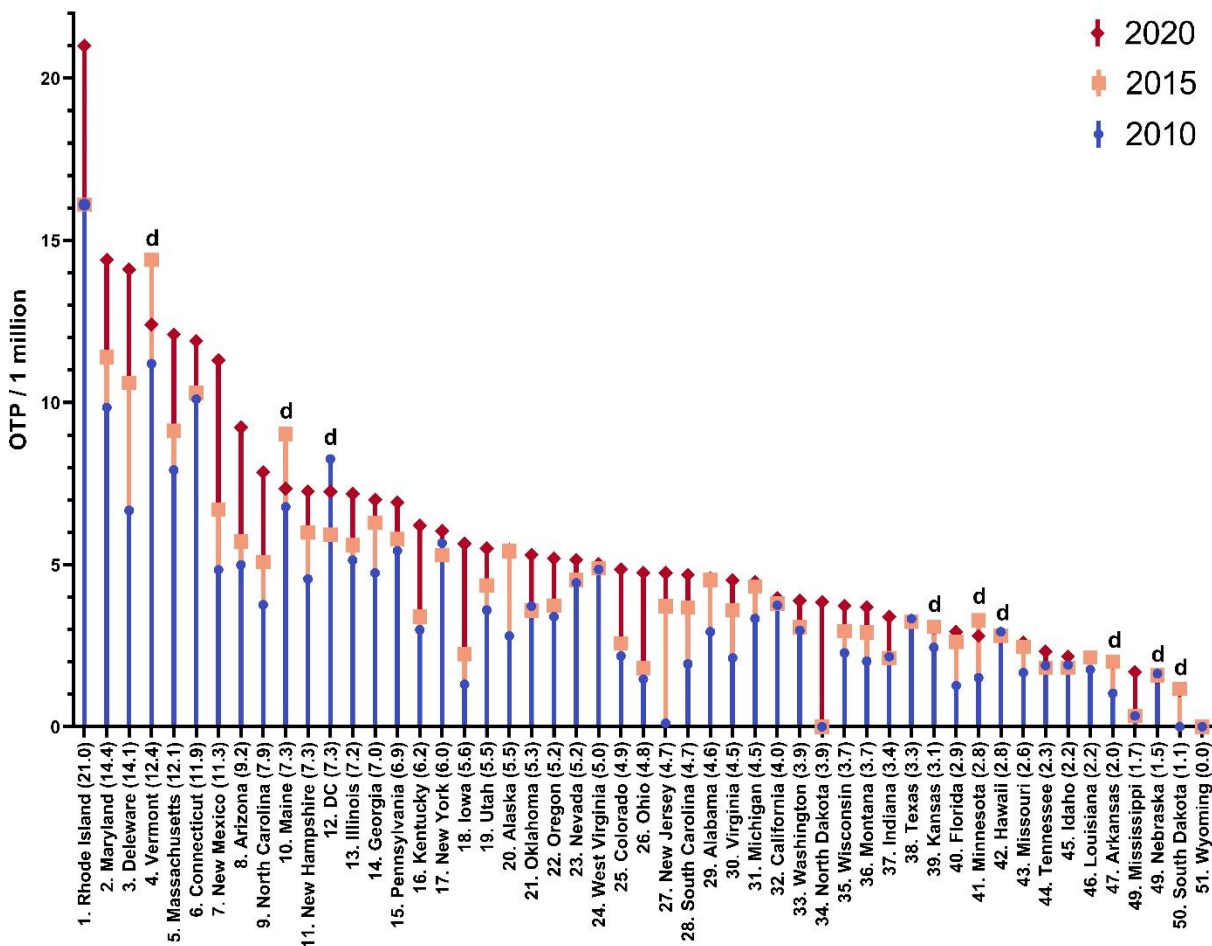
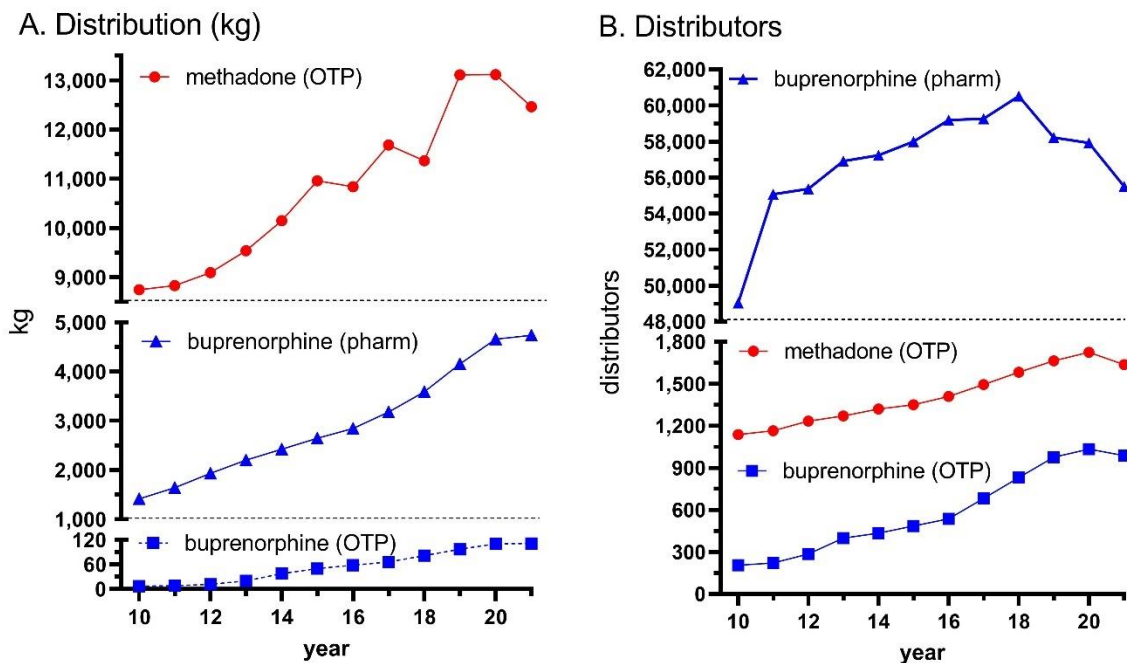


Figure 5. Number of opioid treatment programs per 1 million persons per state all significantly ($p < 0.0001$) different from 2010, 2015 and 2020. States that decreased from 2015 to 2020 are indicated with a “d”. DC: District of Columbia.

Supplemental Table 1. Comparison of the pharmacological and therapeutic properties of methadone and buprenorphine. ^bbuccal formulation, ^ccomplimentary

	<u>methadone</u>	<u>buprenorphine</u>
Year developed	1937	1969
Opioid receptor activity	mu full-agonist	mu partial agonist
Other mechanism(s)	NMDA antagonist	non-selective for other opioid receptors
Potency (x morphine)	8 – 12	10
Metabolism	CYP2D6, CYP3A4	CYP3A4
Active metabolite(s)	none	norbuprenorphine
Half-life	8 – 59 hours for oral	24 – 48 hours for buccal
Formulation	mono	mono or combination with naloxone
Present in breast milk	yes, < 3% maternal dose	yes, < 1% maternal dose
Availability (US)	narcotic treatment programs	providers with an X-waiver
Schedule (US)	II	III
Crowdsourc (price/mg)	\$0.96	\$2.13
Black box warnings	addiction, abuse, misuse, QT prolongation	addiction, abuse, misuse ^b , child exposure can result in overdose
Opioid rank	#1	#4
WHO Essential Medication ^c	yes	yes



Supplemental Figure 1. Distribution in kg (A) and number of buyers and registrants (B) in Opioid Treatment Programs (OTP) and pharmacies (buprenorphine only) for methadone and buprenorphine as reported to the United States Drug Enforcement Administration's Automated Reports and Consolidated Orders system for the fifty states, Washington DC, and the US Territories. Only the first two-quarters of 2021 were available when data-analysis was completed (2/25/2022). Distribution of the full-year was estimated by doubling the weight. Methadone in 2021 (12.5 metric tons) was 4.95% lower than 2019 (13.1 metric tons) and 4.96% below 2020 (13.1 metric tons). Methadone by weight was 2.57-fold greater than buprenorphine from pharmacies and OTPs in 2021. The number of pharmacies distributing buprenorphine was 33 to 47-fold greater than the number of OTPs distributing methadone from 2010 to 2021.

References

1. Peterkin A, Laks J, Weinstein ZM. Current Best Practices for Acute and Chronic Management of Patients with Opioid Use Disorder. *Med Clin North Am.* 2022;106(1):61-80. doi:10.1016/j.mcna.2021.08.009
2. Chow RM, Issa M. Use of Methadone. *Pain Med An Essent Rev.* 2017;172(January):157-158. doi:10.1007/978-3-319-43133-8_38
3. Toce MS, Chai PR, Burns MM, Boyer EW. Pharmacologic Treatment of Opioid Use Disorder: a Review of Pharmacotherapy, Adjuncts, and Toxicity. *J Med Toxicol.* 2018;14(4):306-322. doi:10.1007/s13181-018-0685-1
4. Substance Abuse and Mental Health Services Administration. Opioid Treatment Program (OTP) Guidance. 2020;7:20857.
<https://www.samhsa.gov/sites/default/files/otp-guidance-20200316.pdf>
5. Baldwin L. Medicare Program; Opioid Treatment Programs: CY 2022 Methadone Payment Exception. 2021;86(221). doi:10.1177/2050324520940428.8
6. Mattick RP, Breen C, Kimber J, Davoli M. Methadone Maintenance Therapy Versus No Opioid Replacement Therapy for Opioid Dependence. *Cochrane Database Syst Rev.* 2009;(3).
doi:10.1002/14651858.CD002209.PUB2/INFORMATION/EN
7. Monnelly VJ, Anblagan D, Quigley A, et al. Prenatal Methadone Exposure is Associated with Altered Neonatal Brain Development. *NeuroImage Clin.* 2018;18(November 2017):9-14. doi:10.1016/j.nicl.2017.12.033
8. Short VL, Hand DJ, MacAfee L, Abatemarco DJ, Terplan M. Trends and Disparities in Receipt of Pharmacotherapy Among Pregnant Women in Publically

- Funded Treatment Programs for Opioid Use Disorder in the United States. *J Subst Abuse Treat.* 2018;89(April 2018):67-74. doi:10.1016/j.jsat.2018.04.003
9. Buprenorphine: Drug Safety Communication - FDA Warns About Dental Problems with Buprenorphine Medicines Dissolved in the Mouth to Treat Opioid Use Disorder and Pain. Accessed March 2, 2022.
<https://www.fda.gov/safety/medical-product-safety-information/buprenorphine-drug-safety-communication-fda-warns-about-dental-problems-buprenorphine-medicines>
10. Lagisetty PA, Ross R, Bohnert A, Clay M, Maust DT. Buprenorphine Treatment Divide by Race/Ethnicity and Payment. *JAMA Psychiatry.* 2019;76(9):979-981. doi:10.1001/jamapsychiatry.2019.0876
11. Marsch LA. The Efficacy of Methadone Maintenance Interventions in Reducing Illicit Opiate Use, HIV Risk Behavior and Criminality: A Meta-Analysis. *Addiction.* 1998;93(4):515-532. doi:10.1046/j.1360-0443.1998.9345157.x
12. Otiashvili D, Piralishvili G, Sikharulidze Z, Kamkamidze G, Poole S, Woody GE. Methadone and Buprenorphine-Naloxone are Effective in Reducing Illicit Buprenorphine and Other Opioid Use, and Reducing HIV Risk Behavior- Outcomes of a Randomized Trial. *Drug Alcohol Depend.* 2013;133(2):376-382. doi:10.1016/j.drugalcdep.2013.06.024
13. Calcaterra SL, Bach P, Chadi A, et al. Methadone Matters: What the United States Can Learn from the Global Effort to Treat Opioid Addiction. *J Gen Intern Med.* 2019;34(6):1039-1042. doi:10.1007/s11606-018-4801-3

14. Jones CM, Byrd DJ, Clarke TJ, Campbell TB, Ohuoha C, McCance-Katz EF. Characteristics and Current Clinical Practices of Opioid Treatment Programs in the United States. *Drug Alcohol Depend.* 2019;205(August 2019):107616. doi:10.1016/j.drugalcdep.2019.107616
15. Mattick RP, Breen C, Kimber J, Davoli M. Buprenorphine Maintenance Versus Placebo or Methadone Maintenance for Opioid Dependence. *Cochrane Database Syst Rev.* 2014;2014(2). doi:10.1002/14651858.CD002207.pub4
16. Vital Statistics Rapid Release - Provisional Drug Overdose Data. Accessed February 22, 2022. <https://www.cdc.gov/nchs/nvss/vsrr/drug-overdose-data.htm>
17. Drug Overdose Deaths in the U.S. Top 100,000 Annually. Accessed December 19, 2021. https://www.cdc.gov/nchs/pressroom/nchs_press_releases/2021/20211117.htm
18. Friedman J, Akre S. COVID-19 and the Drug Overdose Crisis: Uncovering the Deadliest Months in the United States, January–July 2020. *Am J Public Health.* 2021;111(7):1284-1291. doi:10.2105/AJPH.2021.306256
19. Joudrey PJ, Adams ZM, Bach P, et al. Methadone Access for Opioid Use Disorder during the COVID-19 Pandemic within the United States and Canada. *JAMA Netw Open.* 2021;4(7):1-13. doi:10.1001/jamanetworkopen.2021.18223
20. Bandara S, Kennedy-Hendricks A, Merritt S, Barry CL, Saloner B. Methadone and Buprenorphine Treatment in United States Jails and Prisons: Lessons From Early Adopters. *Addiction.* 2021;116(12):3473-3481. doi:10.1111/add.15565
21. Bandara S, Kennedy-Hendricks A, Merritt S, Barry CL, Saloner B. Early Effects of COVID-19 on Programs Providing Medications for Opioid Use Disorder in Jails

and Prisons. *J Addict Med.* 2020;14(5):e257-e260.

doi:10.1097/ADM.0000000000000718

22. Piper BJ, Shah DT, Simoyan OM, McCall KL, Nichols SD. Trends in Medical Use of Opioids in the U.S., 2006–2016. *Am J Prev Med.* 2021;54(5):652-660.

doi:10.1016/j.amepre.2018.01.034

23. Kennalley AL, Boureghda YA, Ganesh JG, Watkins AM, McCall KL, Piper BJ. Declining National Codeine Distribution in United States Hospitals and Pharmacies. *SCRIP.* 2021;5:10-15.

24. Furst JA, Mynarski NJ, McCall KL, Piper BJ. Pronounced Regional Disparities in United States Methadone Distribution. *Ann Pharmacother.* 2022;56(3):271-279.

doi:10.1177/10600280211028262

25. Population. Accessed January 4, 2022.

<https://www.census.gov/topics/population.html>

26. Cabrera FF, Gamarra ER, Garcia TE, et al. Opioid Distribution Trends (2006–2017) in the US Territories. *PeerJ.* 2019;2019(1):1-12. doi:10.7717/peerj.6272

27. Welsh C, Doyon S, Hart K. Methadone Exposures Reported to Poison Control Centers in the United States Following the COVID-19-Related Loosening of Federal Methadone Regulations. *Int J Drug Policy.* 2022;102:103591.

doi:10.1016/J.DRUGPO.2022.103591

28. Hedegaard H, Miniño AM, Spencer MR, Warner M. Drug Overdose Deaths in the United States, 1999-2020. *NCHS Data Brief.* 2021;(426):1-8.

29. More Flexible Methadone Access Should Continue Post-Pandemic. The Pew Charitable Trusts. Accessed February 20, 2022.

<https://www.pewtrusts.org/en/research-and-analysis/articles/2021/04/22/more-flexible-methadone-access-should-continue-post-pandemic>

30. Methadone Take-Home Flexibilities Extension Guidance. Accessed February 15, 2022. <https://www.samhsa.gov/medication-assisted-treatment/statutes-regulations-guidelines/methadone-guidance>
31. Amram O, Amiri S, Panwala V, Lutz R, Joudrey PJ, Socias E. The Impact of Relaxation of Methadone Take-Home Protocols on Treatment Outcomes in the COVID-19 Era. *Am J Drug Alcohol Abuse*. 2021;47(6):722-729. doi:10.1080/00952990.2021.1979991
32. Dooling BCE, Stanley L. Extending Pandemic Flexibilities for Opioid Use Disorder Treatment: Unsupervised Use of Opioid Treatment Medications. Published online 2021. [https://regulatorystudies.columbian.gwu.edu/sites/g/files/zaxdzs3306/f/downloads/PEW_Opioids/GW_Reg_Studies_REPORT_Take-Home_Supplies_BDooling and LStanley.pdf](https://regulatorystudies.columbian.gwu.edu/sites/g/files/zaxdzs3306/f/downloads/PEW_Opioids/GW_Reg_Studies_REPORT_Take-Home_Supplies_BDooling_and_LStanley.pdf)
33. Smith CBR. Socio-Spatial Stigmatization and the Contested Space of Addiction Treatment: Remapping Strategies of Opposition to the Disorder of Drugs. *Soc Sci Med*. 2010;70(6):859-866. doi:10.1016/J.SOCSCIMED.2009.10.033
34. Gibbons JB, Stuart EA, Saloner B. Methadone on Wheels-A New Option to Expand Access to Care Through Mobile Units. *JAMA psychiatry*. 2022;79(3). doi:10.1001/JAMAPSYCHIATRY.2021.3716

35. Hyde TF, Bekoe-Tabiri AD, Kropp Lopez AK, et al. County and Demographic Differences in Drug Arrests and Controlled Substance Use in Maine. *J Maine Med Cent.* 2021;3(2):2. doi:10.46804/2641-2225.1074

Methadone Distribution Increased from 2010 to 2019 for Opioid Use Disorder Treatment in the US

Figures

Amy L. Kennalley MBS¹, John A. Furst Jr. BS¹, Nicholas J. Mynarski BS¹, Kenneth
L. McCall PharmD², Brian J. Piper PhD^{1,3}

¹Department of Medical Education, Geisinger Commonwealth School of Medicine,
Scranton, PA, 18510

²Department of Pharmacy Practice, University of New England, Portland, ME,
04103

³Center for Pharmacy Innovation and Outcomes, Forty Fort, PA, 18704

Table 1. Number of opioid treatment programs per state per one million persons.

State	2010	2015	2019	2020
Rhode Island	16.1	16.1	20.8	21.0
Maryland	9.8	11.4	14.2	14.4
Delaware	6.7	10.6	15.4	14.1
Vermont	11.2	14.4	14.4	12.4
Massachusetts	7.9	9.1	11.2	12.1
Connecticut	10.1	10.3	12.1	11.9
New Mexico	4.8	6.7	8.1	11.3
Arizona	5.0	5.7	8.4	9.2
North Carolina	3.8	5.1	7.3	7.9
Maine	6.8	9.0	7.4	7.3
New Hampshire	4.6	6.0	6.6	7.3
District of Columbia	8.3	5.9	8.5	7.3
Illinois	5.1	5.6	7.2	7.2
Georgia	4.7	6.3	6.8	7.0
Pennsylvania	5.4	5.8	7.0	6.9
Kentucky	3.0	3.4	6.3	6.2
New York	5.7	5.3	6.3	6.0
Iowa	1.3	2.2	6.3	5.6
Utah	3.6	4.4	5.0	5.5
Alaska	2.8	5.4	5.5	5.5
Oklahoma	3.7	3.6	4.8	5.3
Oregon	3.4	3.7	4.7	5.2
Nevada	4.4	4.5	4.5	5.2
West Virginia	4.9	4.9	5.0	5.0
Colorado	2.2	2.6	4.3	4.8
Ohio	1.5	1.8	3.8	4.7
New jersey	0.1	3.7	4.2	4.7
South Carolina	1.9	3.7	4.3	4.7
Alabama	2.9	4.5	4.5	4.6
Virginia	2.1	3.6	4.9	4.5
Michigan	3.3	4.3	4.7	4.5
California	3.8	3.8	4.0	4.0
Washington	3.0	3.1	3.9	3.9
North Dakota	0.0	0.0	3.9	3.9
Wisconsin	2.3	3.0	3.6	3.7
Montana	2.0	2.9	3.7	3.7
Indiana	2.2	2.1	3.0	3.4
Texas	3.3	3.2	3.3	3.3
Kansas	2.4	3.1	3.1	3.1
Florida	1.3	2.6	2.8	2.9
Minnesota	1.5	3.3	2.8	2.8
Hawaii	2.9	2.8	2.8	2.7
Missouri	1.7	2.5	2.6	2.6
Tennessee	1.9	1.8	1.9	2.3
Idaho	1.9	1.8	2.2	2.2
Louisiana	1.8	2.1	2.2	2.1

Arkansas	1.0	2.0	2.3	2.0
Mississippi	0.3	0.3	1.7	1.7
Nebraska	1.6	1.6	1.6	1.5
South Dakota	0.0	1.2	1.1	1.1
Wyoming	0.0	0.0	0.0	0.0
Mean	3.8	4.6	5.6	5.7

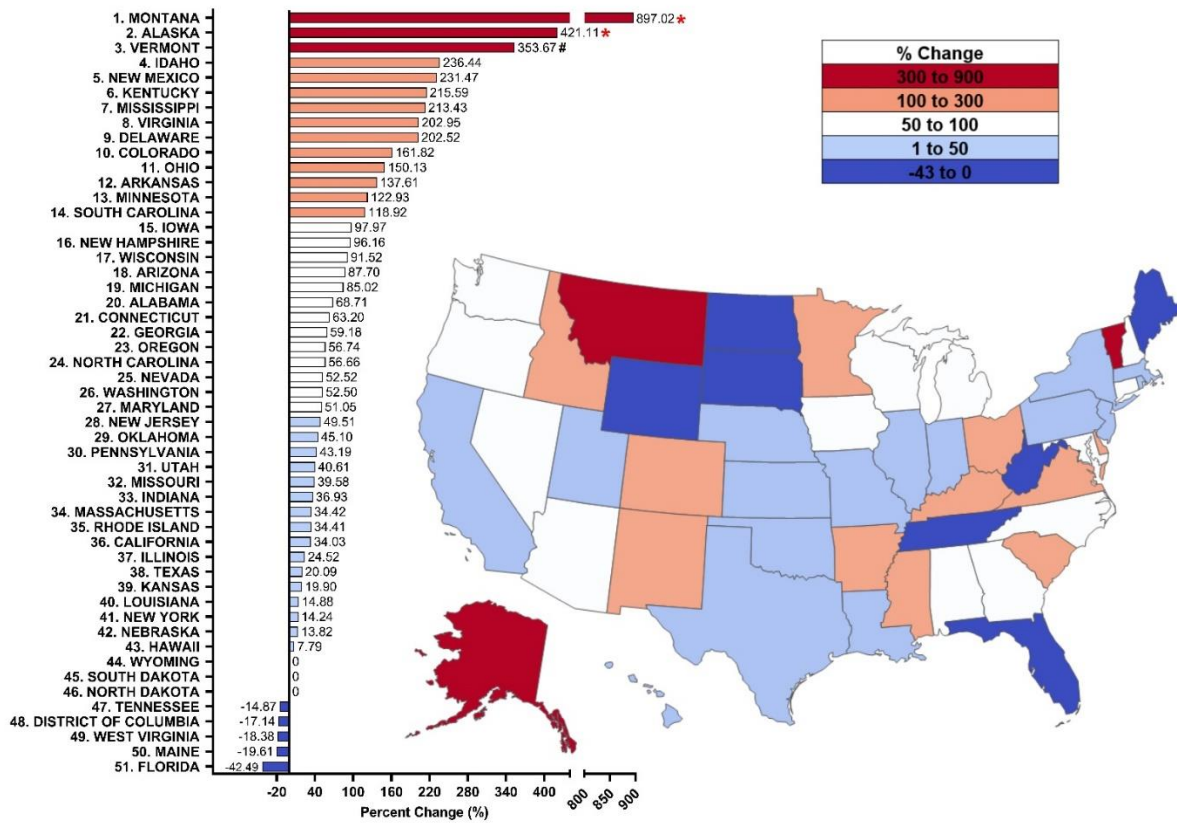


Figure 1. Percent change from 2010 to 2020 in methadone distribution as reported by the Drug Enforcement Administration’s Automated Reports and Consolidated Ordering System for Opioid Use Disorder. Percent change between 1.5 SDs and 1.96 SDs from the mean (+96.96%, SD = 146.64%), indicated with a #. Percent change > ±1.96 SD from the mean was considered significant (*p < 0.05).

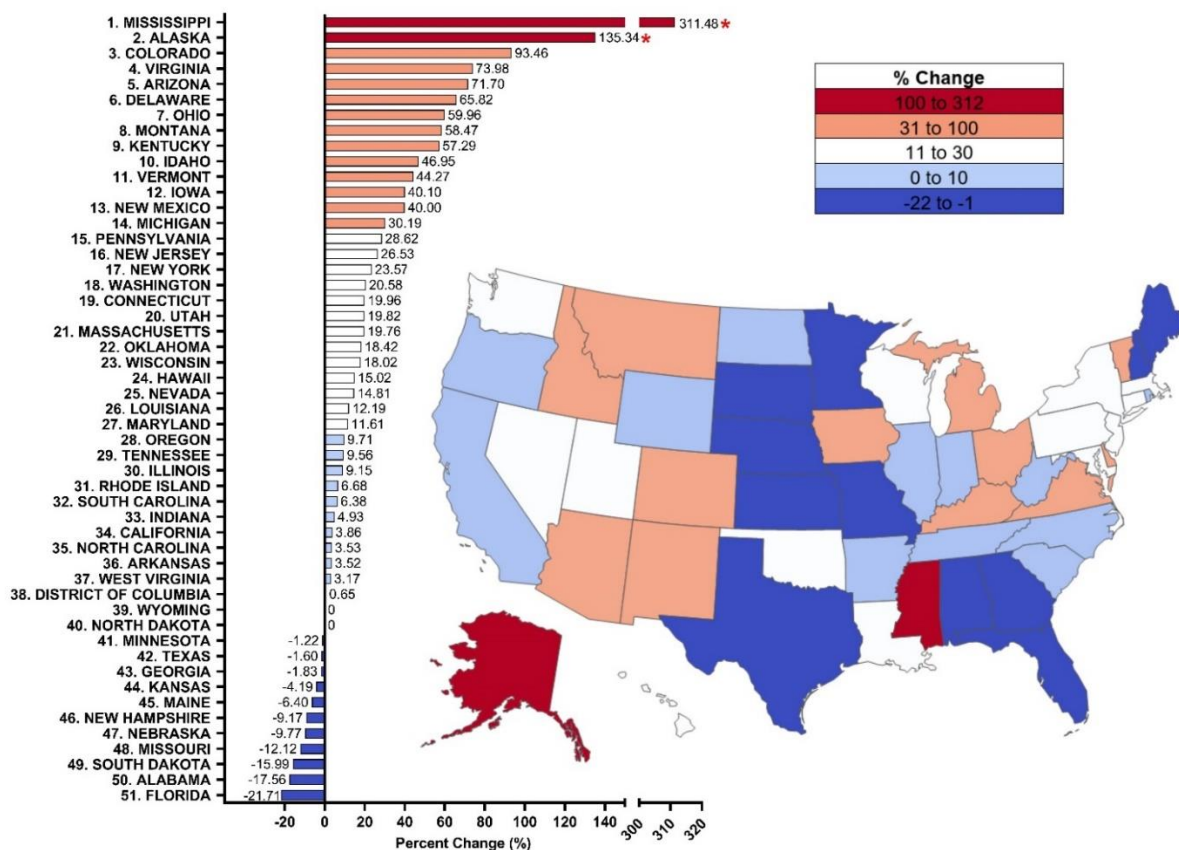


Figure 2. Percent change from 2015 to 2020 in methadone distribution as reported by the Drug Enforcement Administration’s Automated Reports and Consolidated Ordering System for Opioid Use Disorder. Percent change between 1.5 SDs and 1.96 SDs from the mean (+26.22%, SD = 50.38%), indicated with a #. Percent change > ±1.96 SD from the mean was considered significant (*p < 0.05).

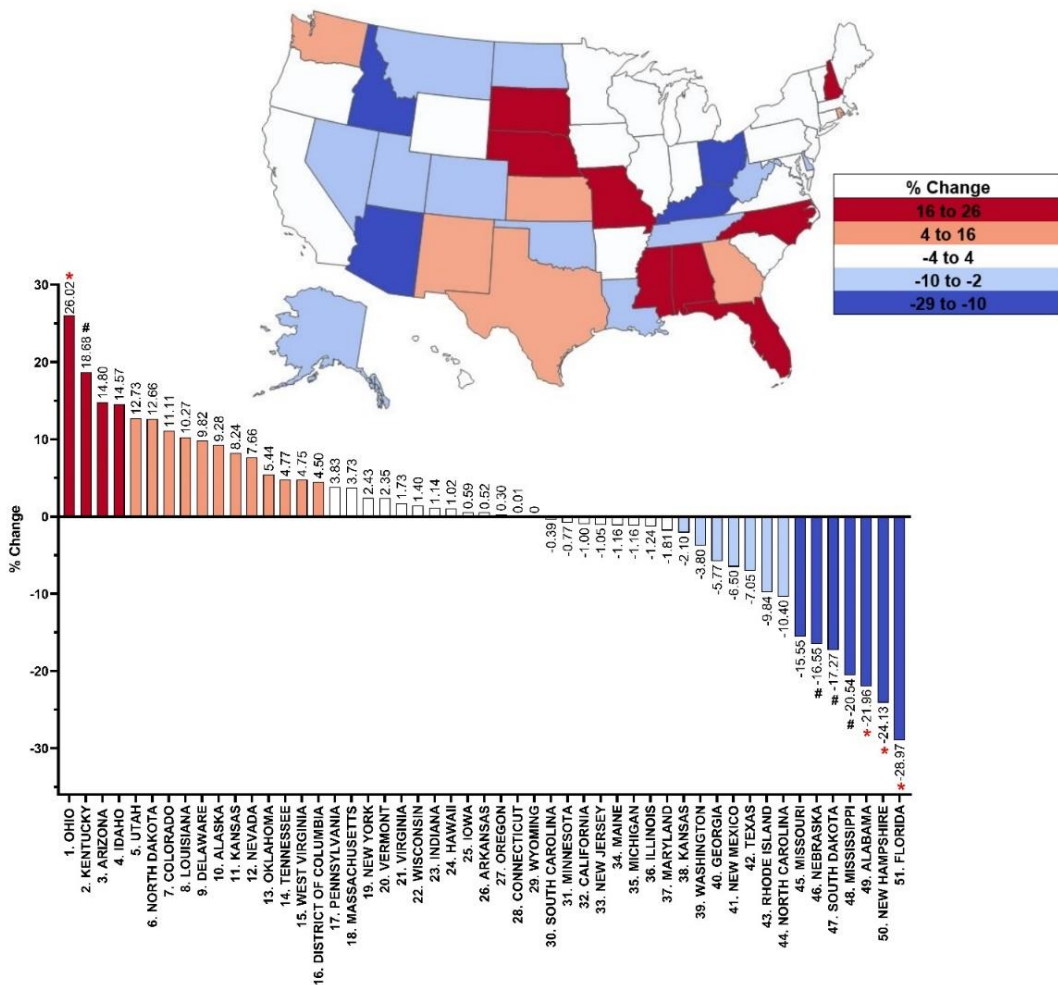


Figure 3. Percent change from 2019 to 2020 in methadone distribution as reported by the Drug Enforcement Administration’s Automated Reports and Consolidated Ordering System for Opioid Use Disorder. Percent change between 1.5 SDs and 1.96 SDs from the mean (+0.09%) (SD 10.81), indicated with a (#). Percent change ± 1.96 SD from the mean considered significant (* $p < 0.05$).

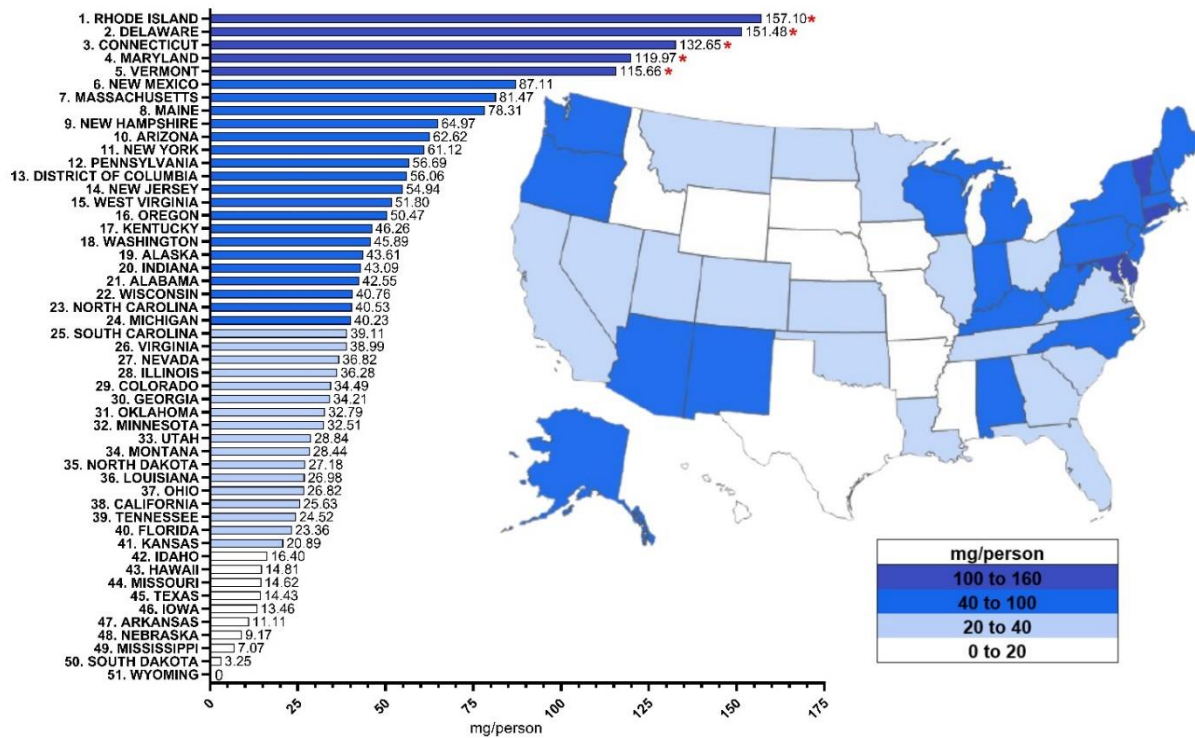


Figure 4. Methadone distribution in 2020 as reported by the Drug Enforcement Administration’s Automated Reports and Consolidated Ordering System for opioid use disorder in mg per person per state. Values ± 1.96 SD from the US mean (46.03 mg/person) (SD 35.47) considered significant (* $p < 0.05$).

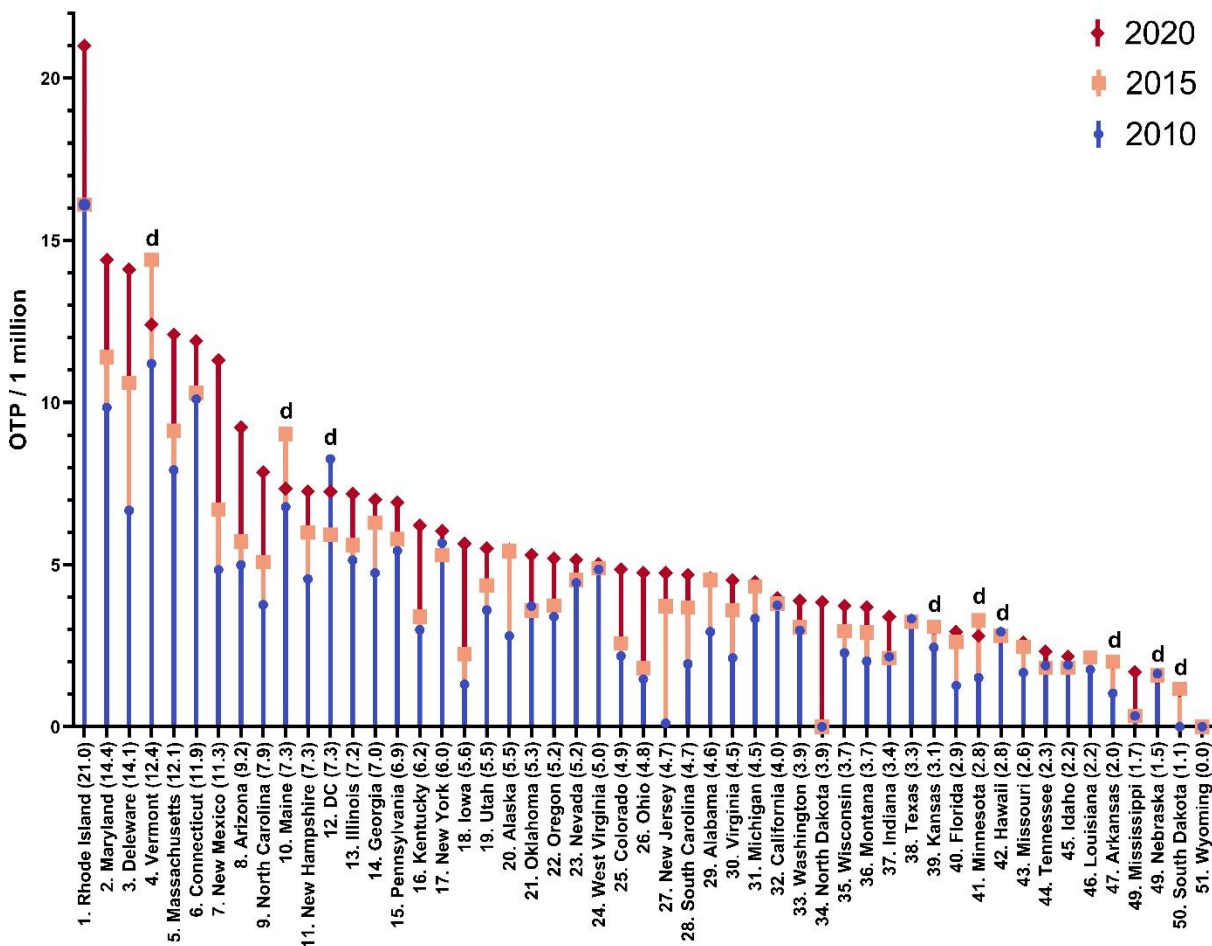
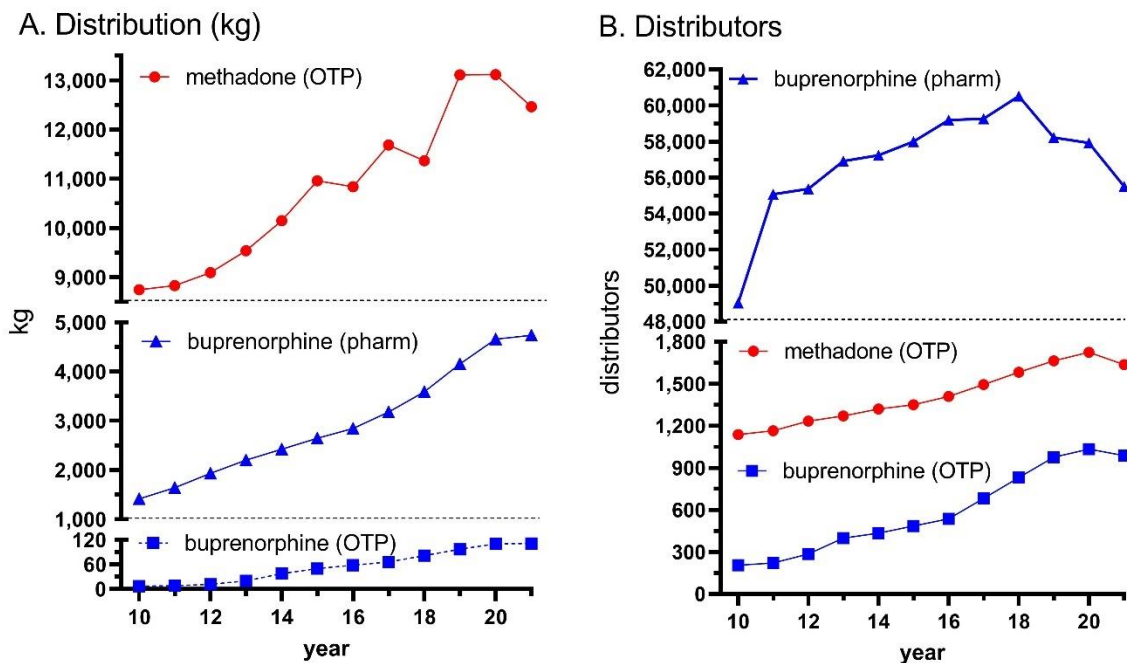


Figure 5. Number of opioid treatment programs per 1 million persons per state all significantly ($p < 0.0001$) different from 2010, 2015 and 2020. States that decreased from 2015 to 2020 are indicated with a “d”. DC: District of Columbia.

Supplemental Table 1. Comparison of the pharmacological and therapeutic properties of methadone and buprenorphine. ^bbuccal formulation, ^ccomplimentary

	<u>methadone</u>	<u>buprenorphine</u>
Year developed	1937	1969
Opioid receptor activity	mu full-agonist	mu partial agonist
Other mechanism(s)	NMDA antagonist	non-selective for other opioid receptors
Potency (x morphine)	8 – 12	10
Metabolism	CYP2D6, CYP3A4	CYP3A4
Active metabolite(s)	none	norbuprenorphine
Half-life	8 – 59 hours for oral	24 – 48 hours for buccal
Formulation	mono	mono or combination with naloxone
Present in breast milk	yes, < 3% maternal dose	yes, < 1% maternal dose
Availability (US)	narcotic treatment programs	providers with an X-waiver
Schedule (US)	II	III
Crowdsourc (price/mg)	\$0.96	\$2.13
Black box warnings	addiction, abuse, misuse, QT prolongation	addiction, abuse, misuse ^b , child exposure can result in overdose
Opioid rank	#1	#4
WHO Essential Medication ^c	yes	yes



Supplemental Figure 1. Distribution in kg (A) and number of buyers and registrants (B) in Opioid Treatment Programs (OTP) and pharmacies (buprenorphine only) for methadone and buprenorphine as reported to the United States Drug Enforcement Administration's Automated Reports and Consolidated Orders system for the fifty states, Washington DC, and the US Territories. Only the first two-quarters of 2021 were available when data-analysis was completed (2/25/2022). Distribution of the full-year was estimated by doubling the weight. Methadone in 2021 (12.5 metric tons) was 4.95% lower than 2019 (13.1 metric tons) and 4.96% below 2020 (13.1 metric tons). Methadone by weight was 2.57-fold greater than buprenorphine from pharmacies and OTPs in 2021. The number of pharmacies distributing buprenorphine was 33 to 47-fold greater than the number of OTPs distributing methadone from 2010 to 2021.