

1 **Usefulness of real-time RT-PCR to understand the kinetics of**

2 **SARS-CoV-2 in blood: a prospective study**

3 Author Names and Affiliations:

4 Nelly Daniela Zurita-Cruz PharmD¹, Alexandra Martín-Ramírez PhD.^{1*}, Diego Aníbal
5 Rodríguez-Serrano MD.², Isidoro González-Álvaro MD., PhD³, Emilia Roy-Vallejo
6 MD.⁴, Rafael De la Cámara MD.⁵, Leticia Fontán García-Rodrigo PharmD¹, Laura
7 Cardeñoso Domingo PhD¹.

8 1. Department of Clinical Microbiology. Hospital Universitario de la Princesa, Madrid,
9 Spain.

10 2. Intensive Care Department, Hospital Universitario de la Princesa, Madrid, Spain.

11 3. Rheumatology Department, Hospital Universitario de la Princesa, Madrid, Spain.

12 4. Internal Medicine Department, Hospital Universitario de la Princesa, Madrid

13 5. Hematology Department, Hospital Universitario de la Princesa, Madrid

14 **Corresponding author:**

15 Nelly Daniela Zurita-Cruz PharmD.

16 Department of Clinical Microbiology. Hospital La Princesa Madrid

17 C/Diego de León 62

18 28006 Madrid

19 Spain

20 Email: nellydaniela.zurita@salud.madrid.org

21 Phone:+34615449741

22 **Word count: 2428 words.**

NOTE: This preprint reports new research that has not been certified by peer review and should not be used to guide clinical practice.

23 **Highlights**

- 24 • Commercial RT-PCR techniques could be used to monitor SARS-CoV-2 viremia
- 25 kinetics.
- 26 • SARS-CoV-2 persistent viremia is related with poor outcome in COVID-19 patient.
- 27 • SARS-Cov-2 viremia kinetics could be used as a biomarker of poor prognosis.
- 28 • Plasma samples are the best choice for analysis of SARS-CoV-2 viremia kinetics.

29

30 **ABSTRACT**

31 **Background**

32 **SARS-CoV-2 viral load and kinetics assessed in serial blood samples from hospitalised**
33 **COVID-19 patients by RT-PCR are poorly understood.**

34 **Methods**

35 **We conducted an observational, prospective case series study in hospitalised COVID-19**
36 **patients. Clinical outcome data (Intensive Care Unit admission and mortality) were**
37 **collected from all patients until discharge. Viremia was determined longitudinally during**
38 **hospitalisation, in plasma and serum samples using two commercial and standardised RT-**
39 **PCR techniques approved for use in diagnosis of SARS-CoV-2. Viral load (copies/mL and**
40 **log₁₀) was determined with quantitative TaqPath™COVID-19 test.**

41 **Results**

42 **SARS-CoV-2 viremia was studied in 57 hospitalised COVID-19 patients. Persistent viremia**
43 **(PV) was defined as two or more quantifiable viral loads detected in blood samples**
44 **(plasma/serum) during hospitalisation. PV was detected in 16 (28%) patients. All of them,**
45 **except for one who rapidly progressed to death, cleared viremia during hospitalisation. Poor**
46 **clinical outcome occurred in 62.5% of patients with PV, while none of the negative patients**

47 **or those with sporadic viremia presented this outcome ($p<0.0001$). Viral load was**
48 **significantly higher in patients with PV than in those with Sporadic Viremia ($p<0.05$).**
49 **Patients presented PV for a short period of time: median time from admission was 5 days**
50 **(Range=2-12) and 4.5 days (Range=2-8) for plasma and serum samples, respectively.**
51 **Similar results were obtained with all RT-PCR assays for both types of samples.**

52 **Conclusions**

53 **Detection of persistent SARS-CoV-2 viremia, by real time RT-PCR, expressed as viral load**
54 **over time, could allow identifying hospitalised COVID-19 patients at risk of poor clinical**
55 **outcome.**

56

57 **Keywords**

58 **SARS-CoV-2; Blood Viral-load; Viremia-Kinetics; rRT-PCR; Intensive Care Unit;**
59 **Mortality.**

60

61

62 INTRODUCTION

63 Severe Acute Respiratory Syndrome Coronavirus-2 (SARS-CoV-2) was first described in
64 December 2019 in Wuhan, China (1). As of 19th of January 2022, 5,542,359 deaths were reported
65 to WHO(2).

66 While most COVID-19 patients present mild disease, others develop a severe disease (3).
67 Identifying patients at risk of developing severe COVID-19 is an unmet need to improve the
68 management of these patients and prevent morbidity and mortality. Some risk factors of poor
69 prognosis, such as elevated concentrations of interleukin (IL)-6, contribute to risk stratification
70 of COVID-19 patients (4–6).

71 Detection of SARS-CoV-2 RNA by real-time reverse transcription polymerase chain reaction
72 (RT-PCR) in nasopharyngeal swabs is the gold standard for COVID-19 diagnosis (7). However,
73 no consistent association has been reported between the viral load in these samples and disease
74 severity (8).

75 Recently, detection of SARS-CoV-2 RNA in blood samples (viremia) has been considered as a
76 potential predictor of poor prognosis, due to its association with rapid deterioration and death (9–
77 13). Nevertheless, there is a lack of reports analysing viral load quantification over time in
78 sequential samples, which could allow understanding viremia kinetics and its relationship with
79 the patient clinical outcome.

80 The objectives of this prospective study were to analyse the kinetics of SARS-CoV-2 viremia, by
81 qualitative and quantitative RT-PCR methods using standardised commercial reagents in
82 sequential samples collected longitudinally from COVID-19 patients during hospital admission,
83 and to determine its relationship with disease clinical course.

84

85 MATERIAL AND METHODS

86 Study design and patients

87 This is a prospective longitudinal case series study, conducted at Hospital Universitario de La
88 Princesa, Madrid (Spain), from November 2020 to January 2021. Fifty-seven consecutively
89 admitted patients with COVID-19 diagnosed by RT-PCR from nasopharyngeal swabs were
90 included. All patients gave their informed consent, and the research protocol was approved by the
91 Institutional Ethics Review Board (register number 4267). We followed guidance from The
92 Strengthening the Reporting of Observational Studies in Epidemiology (STROBE) standards for
93 observational research, and those of the Updated List of Essential Items for Reporting Diagnostic
94 Accuracy Studies (STARD) (14).

95 Data collection and definitions

96 In addition to sociodemographic variables, clinical characteristics and outcome variables
97 (Intensive Care Unit [ICU] admission and mortality during hospitalisation) were collected. “Poor
98 Outcome” was considered when the patient had at least one of the two clinical variables described
99 above. Other relevant variables collected were symptom onset, hospital admission, hospital
100 discharge, death and sample collection dates. All data collected was entered in an anonymized
101 database with access only to the research team.

102 Sample collection

103 First, a blood sample (serum and plasma) was collected within the first 24-36 hours upon
104 admission; subsequently, additional blood samples were collected every 48-72 hours during the
105 first week. Later, samples were collected twice a week until discharge. Samples were frozen at -
106 80°C until RT-PCR performance.

107 Qualitative RT-PCR Methods

108 All blood samples were assessed by two qualitative RT-PCR methods: Cobas®SARS-CoV-2
109 Test, Roche Diagnostics (cobas®-test), an automated method for SARS-CoV-2 detection; and

110 TaqPath™COVID-19 CE IVD RT-PCR Kit, Thermo Fisher Scientific (TaqPath™-test),
111 according to manufacturers' indications (details are shown in supplementary material). For
112 qualitative detection, samples were assessed in duplicate by TaqPath™-test and only once by
113 cobas®-test due to scarce volume.

114 **Quantification of SARS-CoV-2 viral load**

115 Quantitative RT-PCR to determine viral load (qTaqPath-test) was performed using TaqPath™-
116 test reagents in a QuantStudio™ 5 Real Time PCR System (Applied Biosystems). Plasma and
117 serum samples were analysed in duplicate. Viral load quantification of serum and plasma samples
118 was obtained by plotting Ct values through the standard curve obtained using the QuantStudio™
119 Design and Analysis software version 2.4.3 (Applied Biosystems, USA) and according to
120 Thermocycler manufacturer specifications (15). Detailed description of standard curve
121 determination is shown in supplementary material. Samples were considered quantifiable when
122 mean Ct in the duplicate test for each gene was ≤ 37 and standard deviation (SD) was < 0.5 . All
123 results not fulfilling these criteria and/or those with detection in only one duplicate, were
124 considered positive, but not quantifiable. To estimate a value for quantification limit, median of
125 all non-quantifiable values was calculated, obtaining 17.75 copies/mL for serum samples and
126 14.89 copies/mL for plasma samples. For the genes that met quantification criteria, mean quantity
127 was calculated from the duplicates, expressed as copies/mL and logarithm with base 10(\log_{10}).
128 Two positive controls (corresponding to 20,000 and 200 copies) and two negative controls were
129 added in each run in duplicate.

130 Moreover, we studied the number of genes (N, S or ORF) that were amplified in each plasma
131 sample tested by q-RT-PCR, as an indication of the association of viremia with the presence of
132 virions.

133 **Kinetics of SARS-CoV-2 in blood**

134 The presence of SARS-CoV-2 RNA was detected by qualitative RT-PCR methods and viral load
135 was determined by qTaqPath-test in plasma and serum of each patient collected throughout the

136 follow-up. To analyse viremia kinetics, time course curves were obtained plotting viral load
137 change over time. Specific patterns of viral load change were identified and their relationship with
138 clinical evolution was analysed.

139 Statistical analysis is detailed in supplementary methods.

140 **RESULTS**

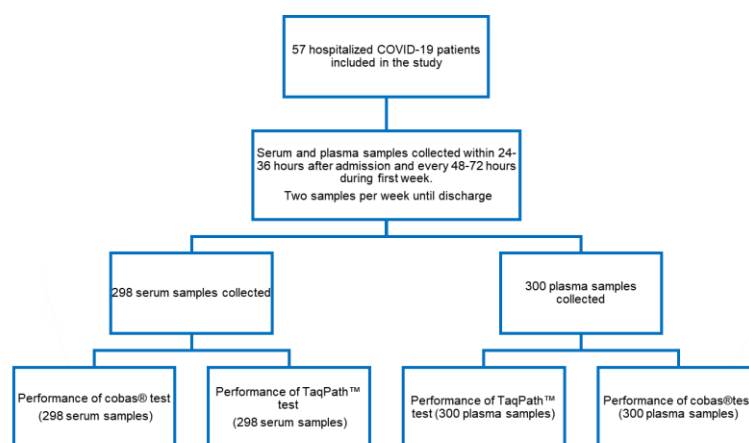
141 **Characteristics of the study population**

142 Fifty-seven patients consecutively admitted to our hospital were included in this study (Figure 1).
143 A median of 4 samples per patient (R=2-18) was collected. Median age was 64 years (R=31-94
144 years) and 61.4% were male. During hospital admission, 8 (14.0%) patients required ICU
145 admission (median age 59.5 years; R=52-76 years; 87.5% male); and 5 (9%) died during
146 hospitalisation (median age 76; R=59-86 years; 80% male). Some patients presented more than
147 one clinical condition. Patients included in the Poor Outcome group (n=10; 17.5%) had a median
148 age of 60.5 years; R=52-86 years, 85.7% were male.

149 **Analysis of samples and RT-PCR techniques**

150 A total of 598 samples (298 serum and 300 plasma samples) were assessed (Figure 1).

151



152

153 **Figure 1:** STROBE flow chart of the study including participation, sample collection and tests.

154

155 Qualitative detection obtained by cobas® and TaqPath™ tests showed a similar concordance
 156 ($\kappa=0.613$ and $\kappa=0.604$, respectively) for both types of samples. However, both tests showed
 157 statistically significant higher positive detection in plasma samples (Table 1).

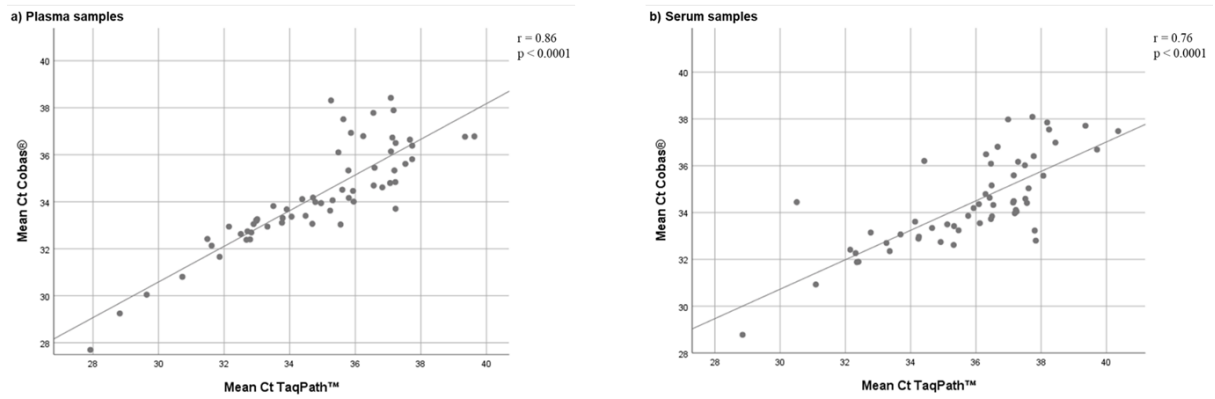
158 **Table 1.** Agreement of viremia qualitative detection in serum and plasma samples according to
 159 RT-PCR technique.

	cobas®-test (n=298)		TaqPath™-test (n=300)	
	Plasma Positive n (%)	Plasma Negative n (%)	Plasma Positive n (%)	Plasma Negative n (%)
Serum Positive n (%)	75 (25.2)	17 (6)	76 (25.3)	13 (4.6)
Serum Negative n (%)	35 (11.7)	171 (57.8)	41 (13.3)	170 (56.7)
Agreement	82.9%		82%	
Kappa coefficient	0.613		0.604	
p value	<0.0001		<0.0001	

160

161 Mean Ct values obtained from plasma and serum by TaqPath™-test (33.99 ± 2.05 and 34.21 ± 1.94 ,
 162 respectively) and those obtained by cobas®-test (35.34 ± 2.12 and 35.16 ± 2.33 , respectively) did
 163 not show significant differences ($p>0.5$). Pearson correlation analysis of mean Ct showed
 164 correlation coefficients (r) of 0.86 and 0.76 for plasma and serum samples, respectively (Figure
 165 2). Results of the correlation of Ct obtained by both techniques in serum samples are consistent
 166 with findings described in our previous series(16).

167



168

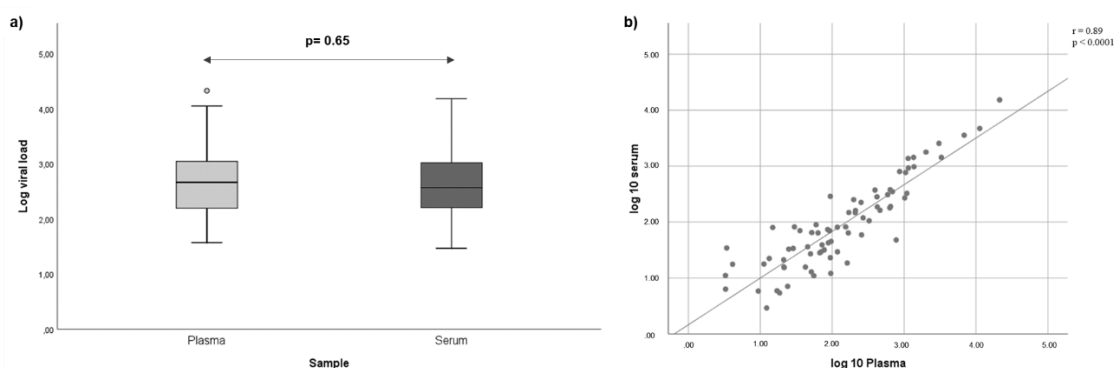
169 **Figure 2:** Scatter plot of mean Ct obtained by Taqpath™ and cobas® RT-PCR tests in plasma
170 (a) and serum (b). Correlation between results was analysed by Pearson correlation ($r=0.86$ and
171 0.76 , respectively. $P<0.0001$ for both techniques).

172

173 Analysis of SARS-CoV-2 viral loads

174 Viral load could be quantified with qTaqPath-test in 50 plasma and 41 serum samples. Median
175 viral load was 462.88 copies/mL ($R=37.26-21,277$) for plasma, and 370 copies/mL ($R=29.42-$
176 $15,257$) for serum samples. Viral load expressed in \log_{10} showed a normal distribution. Mean
177 value of viral load in plasma was $2.65 \pm 0.63 \log_{10}$ and $2.6 \pm 0.58 \log_{10}$ for serum samples. No
178 statistically significant differences were found between both types of samples ($p=0.65$).
179 Furthermore, correlation analysis of viral load obtained from plasma and serum showed a Pearson
180 correlation coefficient $r=0.89$ (Figure 3).

181



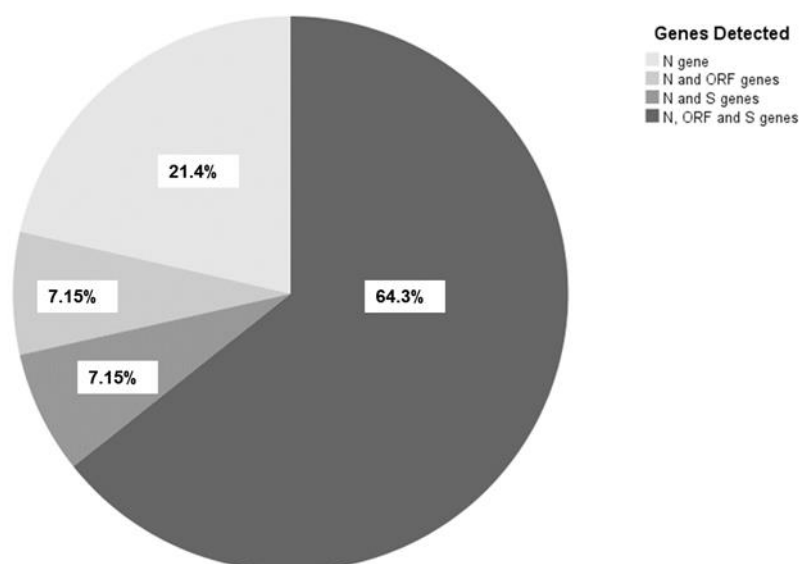
182

183 **Figure 3:** Comparison of viral load in plasma and serum samples. Viral loads were determined
184 by qTaqPath-test. Differences between plasma and serum were analysed by Student's t test
185 ($p=0.65$) (a). Correlation between data was evaluated by Pearson correlation coefficient ($r=0.89$;
186 $p<0.0001$) (b).

187

188 **Detection of SARS-CoV-2 genes in plasma samples**

189 Detection of SARS-CoV-2 genes in plasma by TaqPath™ Kit showed that at least two assay
190 targets could be detected in 79% of the patients: all 3 targets were detected in 64.3%, 2 targets in
191 14,3% and only the N gene in 21.4% of the cases. (Figure 4).



192

193 **Figure 4.** Distribution of genes detection by TaqPath™ kit in patients with positive viremia.

194

195 **Kinetics of SARS-CoV-2 viremia in hospitalised patients**

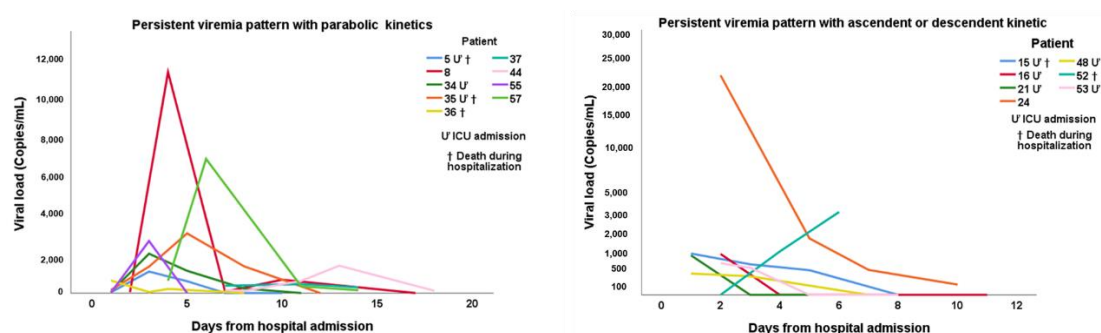
196 Viremia analysis over time was performed in consecutive plasma and serum samples of individual
197 patients ($n=57$) through the qualitative methods, cobas® and TaqPath™ tests, and viral load was
198 assessed using qTaqPath-test. Three different viremia patterns were identified: i) Persistent
199 Viremia (PV), viremia was detected in two or more consecutive determinations, $n=16$ (28%); ii)

200 Sporadic Viremia (SV), viremia was only detected in isolated samples, n=34 (60%); and, iii)
201 Negative Viremia (NV), viremia was not detected in any of the samples during hospitalisation,
202 n=7 (12%).

203 Patients presented PV for a short period of time: median time was 5 days (Range=2-12) for plasma
204 samples and 4.5 days (Range=2-8) for serum. Viremia clearance occurred spontaneously in PV
205 patients during hospitalisation, except for one patient who progressed rapidly to death.

206 Analysis of viral load in consecutive samples of all patients with PV (n=16) showed different
207 trends. Nine (56.2%) patients showed a parabolic curve, with an initial increase of viral load
208 followed by a decrease. Six (37.5%) patients, 5 of them admitted to ICU, showed a decreasing
209 viral load curve. Conversely, one patient (6.3%) showed increasing viral load until decease.
210 (Figure 5)

211



212

213 **Figure 5.** Viral load kinetics curves throughout hospitalisation in plasma from patients with
214 Persistent Viremia. Clinical characteristics defining poor outcome are included within the
215 graphics for each patient. ICU: intensive care unit.

216

217 To further characterise the kinetics of SARS-CoV-2 in the blood of patients with PV, both
218 viremias assessed by the 2 qualitative techniques (expressed as Ct) and viral load assessed by the
219 q-TaqPath test (expressed as copies/mL) were determined in plasma and serum samples. Kinetics

220 curves represent the change of these parameters in individual PV patients during hospitalisation
221 for the qualitative (Figure 6A) and quantitative (Figure 6B) determinations. Curves obtained for
222 each individual patient showed similar kinetic behaviour regardless of the technique or the type
223 of sample used for the analysis. These results suggest that PV could be monitored using plasma
224 or serum samples and both, qualitative and quantitative RT-PCR methods.

225

226



227

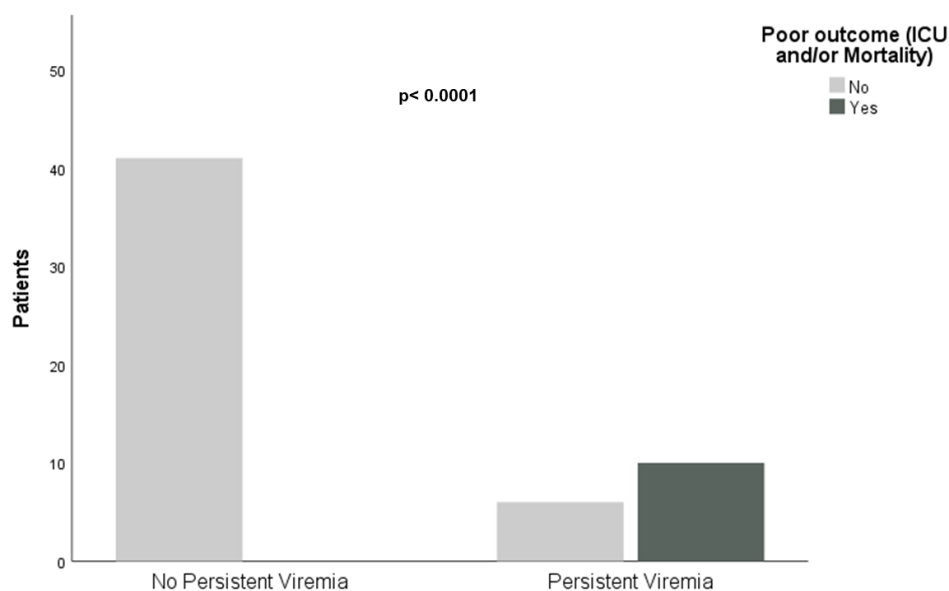
228 **Figure 6.** Analysis of SARS-CoV-2 viremia kinetics assessed by different RT-PCR methods in
 229 plasma and serum samples. The headings of the graphs represent the code of the anonymised

230 patients, followed by their clinical outcome (ICU: Intensive Care Unit admission; M: Death
231 during hospital admission). The curves show the kinetics of viremia determined by the
232 TaqPath™-test and cobas®-test, expressed as Ct values (A), and the q-TaqPath test, expressed in
233 copies/mL (B).

234

235 **Relationship of Persistent Viremia with clinical outcome and viral load in blood**

236 Analysis of viral load in consecutive samples over time and its relationship with clinical outcome
237 showed that 100% of those patients with Poor Outcome (ICU admission and/or death) during
238 hospitalisation (N=10) presented PV, whereas none of those patients with SV and NV presented
239 a Poor Outcome and all of them were discharged. Although 6 PV patients did not present any
240 characteristic of poor clinical outcome, those patients represented only the 13% of all patients
241 without Poor Outcome (N=47), that is, poor clinical outcome was significantly associated with
242 PV compared to no PV ($p < 0.0001$), as shown in Figure 7.



243

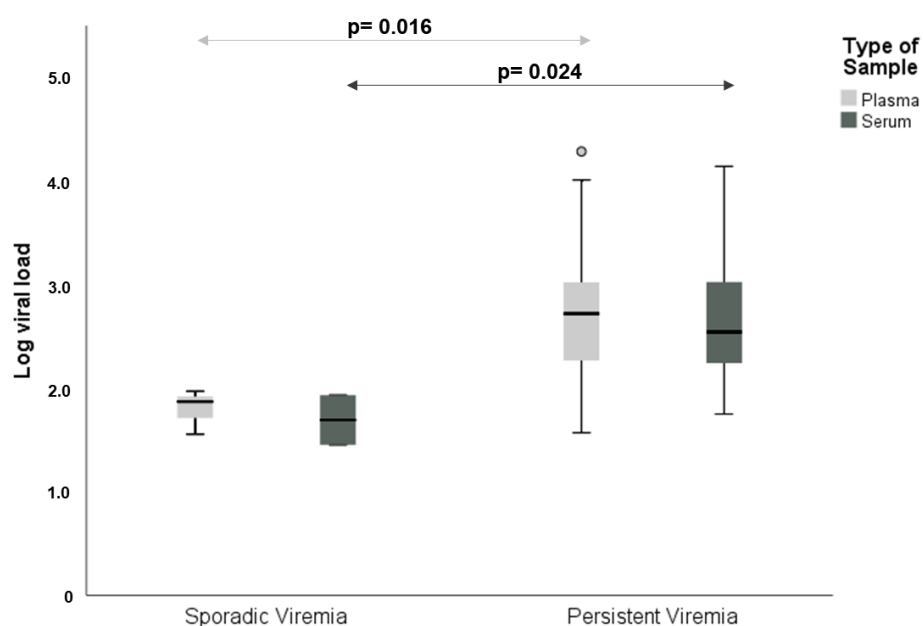
244 **Figure 7.** Relationship of Persistent Viremia with clinical outcome. Distribution of patients
245 according to the presence or absence of Persistent Viremia is shown. The comparison between
246 both groups was analysed with the χ^2 test.

247

248 No difference was detected in age ($p=0.2$) or sex ($p=0.4$) between patients with different viremia
249 patterns.

250 The viral load had a normal distribution when it was expressed as \log_{10} . Regarding viral load in
251 patients with different viremia patterns, SV patients showed lower viral loads than PV. Median
252 viral loads for SV were 77.3 copies/mL (IQR= 37.3-77.3; mean= $1.82 \pm 0.22 \log_{10}$) and 59.4
253 copies/mL (IQR=29.4-59.4; mean= $1.71 \pm 0.34 \log_{10}$) for plasma and serum, respectively, whereas
254 for PV median viral load was 558 copies/mL (IQR= 170.3-1145.4; mean= $2.71 \pm 0.61 \log_{10}$) for
255 plasma and 370.4 copies/mL (IQR= 180.92-1233.6; mean= $2.57 \pm 0.55 \log_{10}$) for serum. Viral load
256 was significantly higher for PV compared to SV for both types of samples (Figure 8).

257



258

259 **Figure 8.** Viral load is significantly higher in patients with persistent viremia than those with
260 sporadic viremia in serum and plasma samples. The viral load expressed as \log_{10} showed a normal
261 distribution, so the difference of viral loads between both groups was analysed by Student's t test.

262

263

264 **DISCUSSION**

265 The hypothesis of this study was that detectable SARS-CoV-2 viremia in successive samples over
266 time (persistent viremia) could identify hospitalised COVID-19 patients with high risk of poor
267 clinical outcome. To verify this, we studied methods for qualitative detection of SARS-CoV-2
268 RNA and for quantification of viral load in plasma and serum, using commercially available RT-
269 PCR kits, marked with CE and FDA authorisation. In addition, the association of viremia
270 evolution with patient outcome was also evaluated.

271 Regarding the relationship between disease severity and the pattern of viremia kinetics, our results
272 showed that all patients with ICU admission and/or death during hospitalisation had PV, while
273 none of the patients with SV or NV had poor clinical outcome in this cohort. This supports our
274 hypothesis that patients with PV are more likely to have a poor clinical outcome, in agreement
275 with other authors. (17-23)

276

277 The graphical representation of viremia kinetics patterns in patients with PV, assessed by two
278 qualitative and one quantitative RT-PCR methods showed similar kinetic patterns regardless of
279 the use of different reagents and RT-PCR platforms. This analysis suggests that the dynamics of
280 viremia in longitudinal samples correlates with the presence of SARS-CoV-2 in blood and is
281 reproducible. However, some discrepancy values were detected in isolated cases where the Ct
282 value or viral load was lower than those in the paired sample from the same blood extraction
283 (plasma vs. serum). We hypothesised that those discrepancies could be due to a loss of sample
284 integrity.(24) However, the fact that different techniques can be used to analyse the kinetics of
285 the SARS-CoV-2 viremia increases the versatility of this determination when it comes to its
286 implementation in clinical microbiology laboratories.

287 Our previous results suggested that the Ct value is a good approximation for the stratification of
288 severely ill patients(13). However, the variation due to the sample type and handling, the

289 technique used, and the intrinsic variability of RT-PCR makes it necessary to develop a
290 standardised method to obtain more reproducible results(25). Even in this series, both assays
291 detected a higher number of positives in plasma than in serum. In this sense, it is well known that
292 the quantification of viral load in plasma has been standardised in other pathologies associated to
293 viral infections such as HIV, HCV, HBV, CMV(26–29), and provides a more precise and reliable
294 monitoring of viremia than Ct values. For this reason, we propose the use of SARS-CoV-2 viral
295 load from plasma samples for the analysis of viremia kinetics.

296 Different authors have quantified viremia using new technologies such as Droplet Digital PCR
297 (18, 31) using internally developed methods with primer design (17), or ultrasensitive quantitative
298 RT-PCR(32). In this context, the objective of this work was to assess the usefulness of a
299 quantification method using RT-PCR to monitor SARS-CoV-2 viral load in hospitalised COVID-
300 19 patients. We used commercial and standardised reagents with CE and FDA marking for
301 authorisation, making a standard curve and taking advantage of the options offered by the
302 QuantStudio 5 thermal cycler interpretation software. Taken all together, these characteristics
303 provide a robust and reproducible quantification method that allows monitoring viremia in
304 hospitalised COVID-19 patients. Also, we agree with other authors on the need to develop
305 standardised techniques for quantifying viral load in blood, with FDA or CE approval, that could
306 contribute to improve the management of patients with COVID-19(17, 21).

307 The detection of SARS-CoV-2 RNA in blood has been called RNAemia by some authors (24, 30,
308 31). However, we refer to this determination as viremia since, in almost 80% of the samples
309 studied in this study, 2 or 3 SARS-CoV-2 genes were detected; the presence of these genes could
310 be correlated with the presence of viral particles (32, 33). In addition, detection of RNA in
311 successive blood samples would indicate the presence of the virus.

312 The present study has certain limitations. First, the number of patients included in the study was
313 moderate (57 patients). Second, although two RT-PCR techniques were performed, only the
314 TapPath™ test allowed us to quantify the viral load (in copies/ml and \log_{10} viral load).

315 In summary, we conclude that persistent SARS-CoV-2 viremia in blood samples may be
316 potentially used as indicator of poor prognosis in hospitalised COVID-19 patients. Both
317 qualitative and quantitative RT-PCR techniques are suitable for the characterisation of viremia
318 kinetics in plasma and serum samples. Knowledge of SARS-CoV-2 kinetics in blood allows
319 stratification of hospitalised COVID-19 patients.

320

321 **Author contributions.**

322 **Credit authorship contribution statement**

323 N. D. Zurita Cruz: methodology, formal analysis, investigation, writing.

324 A. Martín Ramírez: methodology, formal analysis, investigation, writing.

325 D. A. Rodríguez Serrano: resources, writing.

326 I. González Álvaro: resources, writing.

327 E. Roy Vallejo: resources, writing.

328 R. de la Cámara: resources, writing.

329 L. Fontán García-Rodrigo: methodology, formal analysis, writing.

330 L. Cardeñoso Domingo: conceptualization, investigation, methodology, writing, supervision.

331 All the authors have revised and approved the final version of the manuscript

332

333 **Funding**

334 This research did not receive any specific grant from funding agencies in the public, commercial,
335 or not-for-profit sectors.

336 The work of ER-V has been funded by a Rio-Hortega grant CM19/00149 from the Ministerio de
337 Economía y Competitividad (Instituto de Salud Carlos III) and co-funded by The European
338 Regional Development Fund (ERDF) "A way to make Europe"

339

340 **Declaration of Competing Interest**

341 The authors declare that they have no known competing financial interests or personal
342 relationships that could have appeared to influence the work reported in this paper.

343

344 **Acknowledgments**

345 Special thanks to our patients and relatives for agreeing with the use of pseudonymized clinical
346 data and surpluses of clinical samples to perform this study, to Manuel Gomez Gutierrez, PhD for
347 his excellent editing assistance, and Ancor Sanz for assistance with statistical analysis.

348 PREINMUN-COVID group includes:

349 **Anesthesiology:** Rosa Méndez, Julia Hernando, David Arribas.

350 **Hematology:** Javier Ortiz, Isabel Iturrate, Rafael de la Cámara.

351 **Immunology:** Francisco Sánchez-Madrid, Ildefonso Sánchez-Cerrillo, Pedro Martínez-Fleta,
352 Celia López-Sanz, Ligia Gabrie, Luciana del Campo Guerola, Elena Fernández, Reyes Tejedor,
353 Cecilia Muñoz, Aranzazu Alfranca. Ana Triguero-Martínez.

354 **Intensive Care Unit:** Marta Chicot Llano, Pablo Patiño Haro, Marina Trigueros Genao, Begoña
355 Quicios, Begoña González, Diego Aníbal Rodríguez Serrano.

356 **Internal Medicine-Infectious Diseases:** Emilia Roy-Vallejo, Eduardo Sánchez, Fernando
357 Moldenhauer, Marianela Ciudad, Ana Barrios, Beatriz Sánchez, Almudena Villa, Jesús Álvarez,
358 Cristina Arévalo Román, José María Galván-Román, Jesús Sanz, Carmen Suárez Fernández.

359 **Microbiology:** Nelly Daniela Zurita, Diego Domingo García, Teresa Alarcón Cavero, María
360 Auxiliadora Semiglia Chong, Ainhoa Gutiérrez Cobos, María Diez Aguilar, Isabel García Arata,
361 Laura Cardeñoso Domingo.

362 **Pneumology:** Elena Ávalos, Celeste Marcos, Elena García Castillo, Ana Sánchez Azofra, Tamara
363 Alonso, Carolina Cisneros, Claudia Valenzuela, Francisco Javier García Pérez, Rosa María Girón,
364 Javier Aspa, Enrique Zamora, Mar Barrio Mayo, Rosalina Henares Espi, Olga Rajas, Joan B.
365 Soriano, Julio Ancochea.

366

367 **References**

- 368 1. Cheng ZJ, Shan J. 2020. 2019 Novel coronavirus: where we are and what we know.
369 Infection 48:155–163.
- 370 2. WHO Coronavirus (COVID-19) Dashboard | WHO Coronavirus (COVID-19) Dashboard
371 with Vaccination Data. <https://covid19.who.int/>. Retrieved 30 June 2021.
- 372 3. Richardson S, Hirsch JS, Narasimhan M, Crawford JM, McGinn T, Davidson KW, Barnaby
373 DP, Becker LB, Chelico JD, Cohen SL, Cookingham J, Coppa K, Diefenbach MA, Dominello
374 AJ, Duer-Hefele J, Falzon L, Gitlin J, Hajizadeh N, Harvin TG, Hirschwerk DA, Kim EJ, Kozel
375 ZM, Marrast LM, Mogavero JN, Osorio GA, Qiu M, Zanos TP. 2020. Presenting
376 Characteristics, Comorbidities, and Outcomes among 5700 Patients Hospitalized with
377 COVID-19 in the New York City Area. JAMA - Journal of the American Medical Association
378 323:2052–2059.
- 379 4. Asghar MS, Kazmi SJH, Khan NA, Akram M, Hassan M, Rasheed U, Khan SA. 2020. Poor
380 Prognostic Biochemical Markers Predicting Fatalities Caused by COVID-19: A
381 Retrospective Observational Study from a Developing Country. Cureus 12.
- 382 5. Zheng Z, Peng F, Xu B, Zhao J, Liu H, Peng J, Li Q, Jiang C, Zhou Y, Liu S, Ye C, Zhang P, Xing
383 Y, Guo H, Tang W. 2020. Risk factors of critical & mortal COVID-19 cases: A systematic
384 literature review and meta-analysis. Journal of Infection. W.B. Saunders Ltd
385 <https://doi.org/10.1016/j.jinf.2020.04.021>.

- 386 6. Li F, Chen X, Zhao B, Qu Y, Chen Y, Xiong J, Feng Y, Men D, Huang Q, Liu Y, Yang B, Ding J,
387 Li F. 2020. Clinical Infectious Diseases Detectable Serum Severe Acute Respiratory
388 Syndrome Coronavirus 2 Viral Load (RNAemia) Is Closely Correlated with Drastically
389 Elevated Interleukin 6 Level in Critically Ill Patients With Coronavirus Disease 2019.
390 *Clinical Infectious Diseases*® 71:1937–1979.
- 391 7. del Rio C, Malani PN. 2020. COVID-19 - New Insights on a Rapidly Changing Epidemic.
392 *JAMA - Journal of the American Medical Association*. American Medical Association
393 <https://doi.org/10.1001/jama.2020.3072>.
- 394 8. Lee S, Kim T, Lee E, Lee C, Kim H, Rhee H, Park SY, Son HJ, Yu S, Park JW, Choo EJ, Park S,
395 Loeb M, Kim TH. 2020. Clinical Course and Molecular Viral Shedding among
396 Asymptomatic and Symptomatic Patients with SARS-CoV-2 Infection in a Community
397 Treatment Center in the Republic of Korea. *JAMA Internal Medicine* 180:1447–1452.
- 398 9. Tan C, Li S, Liang Y, Chen M, Liu J. 2020. SARS-CoV-2 viremia may predict rapid
399 deterioration of COVID-19 patients. *Brazilian Journal of Infectious Diseases* 24:565–569.
- 400 10. Eberhardt KA, Meyer-Schwickerath C, Heger E, Knops E, Lehmann C, Rybniker J,
401 Schommers P, Eichenauer DA, Kurth F, Ramharter M, Kaiser R, Holtick U, Klein F, Jung N,
402 Cristanziano V di. 2020. RNAemia Corresponds to Disease Severity and Antibody
403 Response in Hospitalized COVID-19 Patients. *Viruses* 12.
- 404 11. Hagman K, Hedenstierna M, Gille-Johnson P, Hammas B, Grabbe M, Dillner J, Ursing J.
405 2020. SARS-CoV-2 RNA in serum as predictor of severe outcome in COVID-19: a
406 retrospective cohort study. *Clinical Infectious Diseases*
407 <https://doi.org/doi:10.1093/cid/ciaa1285>.
- 408 12. Xu D, Zhou F, Sun W, Chen L, Lan L, Li H, Xiao F, Li Y, Kolachalama VB, Li Y, Wang X, Xu H.
409 2020. Relationship Between Serum Severe Acute Respiratory Syndrome Coronavirus 2

- 410 Nucleic Acid and Organ Damage in Coronavirus 2019 Patients: A Cohort Study. *Clinical*
411 *Infectious Diseases* <https://doi.org/10.1093/cid/ciaa1085>.
- 412 13. Rodríguez-Serrano DA, Roy-Vallejo E, Zurita Cruz ND, Martín Ramírez A, Rodríguez-García
413 SC, Arevalillo-Fernández N, Galván-Román JM, Fontán García-Rodrigo L, Vega-Piris L,
414 Chicot Llano M, Arribas Méndez D, González de Marcos B, Hernando Santos J, Sánchez
415 Azofra A, Ávalos Pérez-Urria E, Rodríguez-Cortes P, Esparcia L, Marcos-Jimenez A,
416 Sánchez-Alonso S, Llorente I, Soriano J, Suárez Fernández C, García-Vicuña R, Ancochea
417 J, Sanz J, Muñoz-Calleja C, de la Cámara R, Canabal Berlanga A, González-Álvaro I,
418 Cardeñoso L. 2021. Detection of SARS-CoV-2 RNA in serum is associated with increased
419 mortality risk in hospitalized COVID-19 patients. *Scientific Reports* 11:13134.
- 420 14. Bossuyt PM, Reitsma JB, Bruns DE, Gatsonis CA, Glasziou PP, Irwig L, Lijmer JG, Moher D,
421 Rennie D, Korevaar DA, Rémie Cohen JF. 2015. STARD 2015: An Updated List of Essential
422 Items for Reporting Diagnostic Accuracy Studies. *British medical journal* 351.
- 423 15. ThermoFisher Scientific. 2015. QuantStudio Design and Analysis desktop Software User
424 Guide. (Pub. no. MAN0010408) Revision B.0.
- 425 16. Martín Ramírez A, Zurita Cruz ND, Gutiérrez-Cobos A, Rodríguez Serrano DA, González
426 Álvaro I, Roy Vallejo E, Gómez de Frutos S, Fontán García-Rodrigo L, Cardeñoso Domingo
427 L. 2022. Evaluation of two RT-PCR techniques for SARS-CoV-2 RNA detection in serum for
428 microbiological diagnosis. *Journal of Virological Methods* 300:114411.
- 429 17. Heinrich F, Nentwich MF, Bibiza-Freiwald E, Nörz D, Roedl K, Christner M, Hoffmann A,
430 Olearo F, Kluge S, Aepfelbacher M, Wichmann D, Lütgehetmann M, Pfefferle S. Blood
431 SARS-CoV-2 RNA Load Predicts Outcome • OFID • 1 SARS-CoV-2 Blood RNA Load Predicts
432 Outcome in Critically Ill COVID-19 Patients <https://doi.org/10.1093/ofid/ofab509>.

- 433 18. Chen L, Wang G, Long X, Hou H, Wei J, Cao Y, Tan J, Liu W, Huang L, Meng F, Huang L,
434 Wang N, Zhao J, Huang G, Sun Z, Wang W, Zhou J. 2021. Dynamics of Blood Viral Load Is
435 Strongly Associated with Clinical Outcomes in Coronavirus Disease 2019 (COVID-19)
436 Patients. *The Journal of Molecular Diagnostics* 23:10–18.
- 437 19. Zheng S, Fan J, Yu F, Feng B, Lou B, Zou Q, Xie G, Lin S, Wang R, Yang X, Chen W, Wang Q,
438 Zhang D, Liu Y, Gong R, Ma Z, Lu S, Xiao Y, Gu Y, Zhang J, Yao H, Xu K, Lu X, Wei G, Zhou J,
439 Fang Q, Cai H, Qiu Y, Sheng J, Chen Y, Liang T. 2020. Viral load dynamics and disease
440 severity in patients infected with SARS-CoV-2 in Zhejiang province, China, January-March
441 2020: retrospective cohort study. *BMJ* 369.
- 442 20. Agarwal J, Singh V, Garg J, Karoli R, Tiwari S, Naqvi S, Das A, Sen M. 2021. RNAemia and
443 Clinical Outcome in COVID-19 Patients. *Journal of Microbiology and Infectious Diseases J*
444 *Microbiol Infect Dis* 11:116–123.
- 445 21. Colagrossi L, Antonello M, Renica S, Merli M, Matarazzo E, Travi G, Vecchi M, Colombo J,
446 Muscatello A, Grasselli G, Molteni SN, Scaravilli V, Cattaneo E, Fanti D, Vismara C,
447 Bandera A, Gori A, Puoti M, Cento V, Alteri C, Perno CF. SARS-CoV-2 RNA in plasma
448 samples of COVID-19 affected individuals: a cross-sectional proof-of-concept study
449 <https://doi.org/10.1186/s12879-021-05886-2>.
- 450 22. Hogan CA, Stevens BA, Sahoo MK, Huang C, Garamani N, Gombar S, Yamamoto F,
451 Murugesan K, Kurzer J, Zehnder J, Pinsky BA. *Clinical Infectious Diseases* High Frequency
452 of SARS-CoV-2 RNAemia and Association with Severe Disease
453 <https://doi.org/10.1093/cid/ciaa1054>.
- 454 23. Fajnzylber J, Regan J, Coxen K, Corry H, Wong C, Rosenthal A, Worrall D, Giguel F,
455 Piechocka-Trocha A, Atyeo C, Fischinger S, Chan A, Flaherty KT, Hall K, Dougan M, Ryan
456 ET, Gillespie E, Chishti R, Li Y, Jilg N, Hanidziar D, Baron RM, Baden L, Tsibris AM,
457 Armstrong KA, Kuritzkes DR, Alter G, Walker BD, Yu X, Li JZ. 2020. SARS-CoV-2 viral load

- 458 is associated with increased disease severity and mortality. *Nature communications*
459 11:5493-.
- 460 24. Jacobs JL, Mellors JW. Detection of Severe Acute Respiratory Syndrome Coronavirus 2
461 (SARS-CoV-2) RNA in Blood of Patients with Coronavirus Disease 2019 (COVID-19): What
462 Does It Mean? <https://doi.org/10.1093/cid/ciaa1316>.
- 463 25. Santos Bravo M, Nicolás D, Berengua C, Fernandez M, Hurtado JC, Tortajada M, Barroso
464 S, Vilella A, Mosquera MM, Vila J, Marcos MA. 2021. The Journal of Infectious Diseases
465 Severe Acute Respiratory Syndrome Coronavirus 2 Normalized Viral Loads and
466 Subgenomic RNA Detection as Tools for Improving Clinical Decision Making and Work
467 Reincorporation. *The Journal of Infectious Diseases* ® 224:1325–1357.
- 468 26. Berger A, Braner J, Doerr HW, Weber B. 1998. Quantification of Viral Load: Clinical
469 Relevance for Human Immunodeficiency Virus, Hepatitis B Virus and Hepatitis C Virus
470 Infection. *Intervirolgy* 41:24–34.
- 471 27. Pawlotsky JM, Bouvier-Alias M, Hezode C, Darthuy F, Remire J, Dhumeaux D. 2000.
472 Standardization of Hepatitis C Virus RNA Quantification. *Hepatology* 32:654–659.
- 473 28. Peter JB, Sevall JS. 2004. Molecular-Based Methods for Quantifying HIV Viral Load.
474 <https://home.liebertpub.com/apc> 18:75–79.
- 475 29. Guiver M, Fox AJ, Mutton K, Mogulkoc N, Egan J. 2001. Evaluation of CMV viral load using
476 TaqMan CMV quantitative PCR and comparison with CMV antigenemia in heart and lung
477 transplant recipients. *Transplantation* 71:1609–1615.
- 478 30. Xu D, Zhou F, Sun W, Chen L, Lan L, Li H, Xiao F, Li Y, Kolachalama VB, Li Y, Wang X, Xu H.
479 2021. Relationship Between Serum Severe Acute Respiratory Syndrome Coronavirus 2
480 Nucleic Acid and Organ Damage in Coronavirus 2019 Patients: A Cohort Study. *Clinical*
481 *Infectious Diseases* 73:68–75.

- 482 31. Veyer D, Kernéis S, Poulet G, Wack M, Robillard N, Taly V, L'Honneur A-S, Rozenberg F,
483 Laurent-Puig P, Bélec L, Hadjadj J, Terrier B, Péré H. 2020. Highly Sensitive Quantification
484 of Plasma Severe Acute Respiratory Syndrome Coronavirus 2 RNA Sheds Light on its
485 Potential Clinical Value. *Clinical Infectious Diseases*
486 <https://doi.org/10.1093/cid/ciaa1196>.
- 487 32. Jacobs JL, Bain W, Naqvi A, Staines B, Castanha PMS, Yang H, Boltz VF, Barratt-Boyes S,
488 Marques ETA, Mitchell SL, Methé B, Olonisakin TF, Haidar G, Burke TW, Petzold E, Denny
489 T, Woods CW, Mcverry BJ, Lee JS, Watkins SC, St Croix CM, Morris A, Kearney MF,
490 Ladinsky MS, Bjorkman PJ, Kitsios G, Mellors JW. SARS-CoV-2 Viremia is Associated with
491 COVID-19 Severity and Predicts Clinical Outcomes
492 <https://doi.org/10.1093/cid/ciab686/6347519>.
- 493 33. Peña KB, Riu F, Gumà J, Guilarte C, Pique B, Hernandez A, Àvila A, Parra S, Castro A, Rovira
494 C, Cueto P, Vallverdu I, Parada D. 2021. Study of the Plasma and Buffy Coat in Patients
495 with SARS-CoV-2 Infection-A Preliminary Report Academic Editors: Natalia Rakislova and
496 Jaume Ordi <https://doi.org/10.3390/pathogens10070805>.
- 497