

1 Title: Duration of viable virus shedding in SARS-CoV-2 omicron variant infection

2

3 Julie Boucau<sup>1</sup>

4 Caitlin Marino<sup>1</sup>

5 James Regan<sup>2</sup>

6 Rockib Uddin<sup>3</sup>

7 Manish C. Choudhary<sup>2,4</sup>

8 James P. Flynn<sup>2</sup>

9 Geoffrey Chen<sup>3</sup>

10 Ashley M. Stuckwisch<sup>3</sup>

11 Josh Mathews<sup>3</sup>

12 May Y. Liew<sup>3</sup>

13 Arshdeep Singh<sup>3</sup>

14 Taryn Lipiner<sup>3</sup>

15 Autumn Kittilson<sup>2</sup>

16 Meghan Melberg<sup>2</sup>

17 Yijia Li<sup>2</sup>

18 Rebecca F. Gilbert<sup>3</sup>

19 Zahra Reynolds<sup>3</sup>

20 Surabhi L. Iyer<sup>3</sup>

21 Grace C. Chamberlin<sup>3</sup>

22 Tammy D. Vyas<sup>3</sup>

23 Marcia B. Goldberg<sup>3,4</sup>

24 Jatin M. Vyas<sup>3,4</sup>

25 Jonathan Z. Li<sup>2,4\*</sup>

26 Jacob E. Lemieux<sup>3,4,5\*</sup>

27 Mark J. Siedner<sup>3,4\*</sup>

28 Amy K. Barczak<sup>1,3,4\*+</sup>

29

30 Affiliations:

31 1. Ragon Institute of MGH, MIT and Harvard, Cambridge, MA, USA

32 2. Brigham and Women's Hospital Boston, MA, USA

33 3. Massachusetts General Hospital, Boston, MA, USA

34 4. Harvard Medical School, Boston, MA, USA

35 5. Broad Institute, Cambridge, MA, USA

36

37 \* contributed equally

38

39 + Communicating author: [abarczak@mgh.harvard.edu](mailto:abarczak@mgh.harvard.edu)

40

41 **ABSTRACT**

42 Clinical features of SARS-CoV-2 Omicron variant infection, including incubation period and  
43 transmission rates, distinguish this variant from preceding variants. However, whether the  
44 duration of shedding of viable virus differs between omicron and previous variants is not well  
45 understood. To characterize how variant and vaccination status impact shedding of viable virus,  
46 we serially sampled symptomatic outpatients newly diagnosed with COVID-19. Anterior nasal  
47 swabs were tested for viral load, sequencing, and viral culture. Time to PCR conversion was  
48 similar between individuals infected with the Delta and the Omicron variant. Time to culture  
49 conversion was also similar, with a median time to culture conversion of 6 days (interquartile  
50 range 4-8 days) in both groups. There were also no differences in time to PCR or culture  
51 conversion by vaccination status.

52

53 **MAIN**

54 The omicron variant of SARS-CoV-2 has a shorter incubation period and substantially higher  
55 transmission rates than prior variants, dwarfing preceding variants in globally reported cases<sup>1-3</sup>.  
56 Recently, public health guidance has recommended shortening the strict isolation period in non-  
57 health care settings from 10 to 5 days after symptom onset or the initial positive test<sup>4</sup>. However,  
58 viral decay kinetics and duration of shedding viable virus for the omicron variant have not been  
59 well characterized.

60

61 We followed symptomatic outpatients newly diagnosed with COVID-19 with longitudinal  
62 sampling of nasal swabs for viral load, sequencing, and viral culture<sup>5</sup>. A subset of specimens  
63 also underwent laboratory-based antigen testing. During July 2021 – January 2022 we enrolled  
64 56 individuals, including 37 sequenced as delta and 19 sequenced as omicron variant  
65 infections. All but one participant had symptomatic infection. Participant characteristics were  
66 similar between groups, with the exception of a higher vaccine boosting rate among those with

67 omicron infection (26% vs 5%, Table 1). Viral load decay and time to negative PCR did not differ  
68 between participants infected with omicron vs. delta (adjusted hazard ratio [AHR] 0.85, 95%CI  
69 0.44, 1.61, Figure 1A-B, Table 2). Duration of shedding of viable virus, as measured by time to  
70 culture conversion, was also similar by variant (AHR 0.86, 95%CI 0.47, 1.58, Figure 1C, Table  
71 3), with a median time to culture conversion of 6 days in both groups (IQR 4-8 days, Figure 1C).  
72 In the overall cohort, there were no differences in time to PCR conversion ( $P>0.08$ ) or culture  
73 conversion ( $P>0.57$ ) by vaccination status (Figures 1D-E, Tables S2 and S3). Laboratory-based  
74 antigen testing of specimens stored in viral transport media had a specificity of 88% (95%CI, 71-  
75 96%) for culture positivity between days 6-10 after infection (Figure 2, Table 4).

76  
77 In this longitudinal cohort of individuals with symptomatic, non-severe COVID-19 infection, we  
78 found no difference in viral kinetics between omicron variant infection and delta variant infection  
79 or by prior vaccination history. Over 50% of individuals had replication competent, culturable  
80 virus at day 5, and 25% had culturable virus at day 8. Our cohort is limited to individuals with  
81 symptomatic, non-severe COVID-19 disease. A greater proportion of individuals infected with  
82 omicron had received their booster vaccine, although vaccination status was not associated with  
83 viral decay kinetics in multivariable models. Additional studies are needed to correlate viral  
84 culture positivity with confirmed transmission and to validate the utility of clinical antigen testing  
85 for defining optimal isolation periods.

86

## 87 Methods

### 88 *Study Participants*

89 Non-hospitalized individuals with positive SARS-CoV-2 PCR tests in the Mass General Brigham  
90 medical system were recruited. Adults over 18 years of age with a positive test in the medical  
91 health record were recruited, irrespective of indication for testing (i.e. for symptomatic disease,  
92 contact tracing, or work or pre-operative screening). For those who consented to participation,

93 we conducted home visits three times weekly until negative PCR testing. At each visit, we  
94 obtained self-collected nasal swabs in viral transport media, which were transported to the  
95 laboratory within four hours of collection, aliquoted and frozen at -80°C until future testing.  
96 Symptoms, date of onset, and severity were recorded at each specimen collection.  
97 Symptomatic infections were defined as those with COVID-19-related symptoms at any point  
98 during the observation period.

99

#### 100 *Viral load Quantification*

101 Viral load quantification was carried out as previously reported<sup>4</sup>. Briefly, nasal swab fluids were  
102 centrifuged at 21,000 x g for 2 hours at 4°C to pellet virions. 750 µL TRIzol-LS™ Reagent  
103 (ThermoFisher) was then added to the pellets, and samples were subsequently incubated on  
104 ice for 10 minutes. 200 µL of chloroform (MilliporeSigma) was added to each sample, and the  
105 resulting mixtures were then vortexed and centrifuged at 21,000 x g for 15 minutes at 4°C. The  
106 clear aqueous layer was collected and combined with an equal volume of isopropanol (Sigma),  
107 1.5 µL GlycoBlue™ Coprecipitant (ThermoFisher) and 100 µL 3M Sodium Acetate (Life  
108 Technologies); the resulting mixtures were briefly shaken and then incubated on dry ice.  
109 Samples were centrifuged at 21,000 x g for 45 minutes at 4°C to yield RNA pellets, which were  
110 washed with cold 70% ethanol before being resuspended in 50 µL DEPC-treated water  
111 (ThermoFisher). Using the US CDC 2019-nCoV\_N1 primer and probe set (IDT)  
112 (<https://www.cdc.gov/coronavirus/2019-ncov/lab/rt-pcr-panel-primer-probes.html>) and N1 qPCR  
113 standards in 16-fold dilutions to generate standard curves, SARS-CoV-2 viral RNA was  
114 quantified. Each reaction consisted of extracted RNA, 1X TaqPath™ 1-Step RT-qPCR Master  
115 Mix, CG (ThermoFisher), forward and reverse primers, and the probe. Each sample was run in  
116 triplicate, and all plates contained two non-template control (NTC) wells. Positive and negative  
117 controls were run alongside all samples. To ensure appropriate sample quality, the Importin-8  
118 (IPO8) housekeeping gene RNA level was quantified. The efficiency of the RNA extraction and

119 qPCR amplification was assessed by quantifying the internal virion control RCAS<sup>5</sup> RNA level  
120 after spiking this viral mixture into each sample.

121

122

### 123 *SARS-CoV-2 culture*

124 Viral culture was performed as previously reported in the BSL3 laboratory of the Ragon Institute  
125 of MGH, MIT, and Harvard<sup>4</sup>. Briefly, Vero-E6 cells (American Type Culture Collection)  
126 maintained in DMEM (Corning) supplemented with HEPES (Corning), 1X Penicillin  
127 100IU/mL/Streptomycin 100 ug/mL (Corning), 1X Glutamine (Glutamax, ThermoFisher  
128 Scientific), and 10% Fetal Bovine serum (FBS) (Sigma) using Trypsin-EDTA (Fisher Scientific)  
129 were detached and seeded at 20,000 cells per well in 96w plates 16-20 hours before infection.  
130 Specimens were thawed on ice and filtered through a Spin-X 0.45um filter (Corning) at 10,000 x  
131 g for 5min. 25ul of the undiluted filtrate was added to four wells of a 96w plate and serial diluted  
132 (1:5) across half of the plate in media containing 5ug/mL of polybrene (Santa Cruz  
133 Biotechnology). Plates were centrifuged for 1 hour at 2000 x g at 37C. The positive control  
134 SARS-CoV-2 isolate USA-WA1/2020 strain (BEI Resources) was used in parallel for all assays.  
135 Plates were observed with a light microscope 7 days post-infection and documented wells with  
136 CPE. Supernatant of wells was harvested for RNA isolation using a QIAamp Viral RNA Mini kit  
137 (QIAGEN) for confirmation of the viral sequence.

138

### 139 *SARS-CoV-2 Whole Genome sequencing*

140 Whole genome sequencing was performed as previously described<sup>4</sup> following the Illumina  
141 COVIDSeq Test protocol. Libraries were constructed using the Illumina Nextera XT Library Prep  
142 Kit, then pooled and quantified using a Qubit High Sensitivity dsDNA kit (Invitrogen, Waltham,  
143 MA, USA). Genomic sequencing was performed on an Illumina NextSeq 2000, Illumina NextSeq  
144 550, or Illumina NovaSeq SP instrument. Sequences with an assembly length greater than

145 24,000 base pairs were considered complete genomes, and those sequences were assigned a  
146 Pango lineage using the most up-to-date version of pangoleARN assignment algorithm v2.4.2<sup>6</sup>.  
147 All sequences were deposited to GenBank and GISAID. The samples were submitted to NCBI  
148 with Bioproject Accession numbers PRJNA715749 or PRJNA759255.

149

#### 150 *SARS-CoV-2 TaqPath RT-PCR Assay*

151 Starting with Participant 200, samples were tested for spike gene target failure (SGTF) as an  
152 additional genotyping method of detecting Omicron cases following the TaqPath COVID-19  
153 Combo Kit protocol (Thermo Fisher Scientific, Waltham, MA, USA). Nucleic acid was extracted  
154 using the MagMAX Viral/Pathogen II Nucleic Acid Isolation Kit on a Thermo KingFisher Flex  
155 purification system (Thermo Fisher Scientific, Waltham, MA, USA). Reverse transcription PCR  
156 (RT-PCR) was conducted on extracted samples using the Applied Biosystems 7500 Fast Dx  
157 Real-Time PCR Instrument (Applied Biosystems, Waltham, MA, USA), then analyzed for the  
158 presence of SARS-CoV-2 on ORF1ab, N gene, and S gene targets. SGTF was determined by  
159 amplification of SARS-CoV-2 for the ORF1ab and N gene targets with CT values <36 along with  
160 the lack of amplification for the S gene target.

161

#### 162 *SARS-CoV-2 Spike gene amplification*

163 Spike gene amplification was also performed as previously described<sup>4</sup> to determine variant  
164 types for specimens with low viral load when whole genome sequencing was unsuccessful.  
165 cDNA synthesis was synthesized using Superscript IV reverse transcriptase (Invitrogen,  
166 Waltham, MA, USA) as per manufacturer's protocols. cDNA amplification was performed using  
167 *in-house* designed primer sets that targeted codon 1-814 of the spike gene. PCR products were  
168 pooled for Illumina library construction using the Nextera XT Library Prep Kit (Illumina, San  
169 Diego, CA, USA). Raw sequence data was analyzed with PASEq v1.4 (<https://www.paseq.org>).  
170 Amino acid variants were identified at the codon level with perl code and the resulting variant file

171 was used to determine SARS-CoV-2 variant type using Nextclade version 1.13.1  
172 (<https://doi.org/10.21105/joss.03773>).

173

#### 174 *Antigen testing using Abbott BinaxNow SARS-CoV-2 Rapid Antigen Assay*

175 The AN VTM aliquots were thawed on ice and 50uL was transferred in a tube. The swabs from  
176 the BinaxNow kits were immersed into the liquid until it was fully absorbed<sup>7</sup>. The swabs were  
177 then tested according to manufacturer's instructions. After 15min, for each test, a picture was  
178 taken, given a randomized ID and the results interpreted by three readers, blinded to the  
179 specimen ID. The outcome of each test was rated as positive, negative or discordant when not  
180 all three readers agreed.

181

#### 182 *Statistical methods*

183 We summarized demographic and clinical characteristics for individuals with delta and omicron  
184 variant infection and compared characteristics by sub-group with chi-squared testing for  
185 categorical variables and non-parametric testing for continuous variables. We graphically  
186 depicted viral decay by variant with a scatter plot and median of viral load over time since the  
187 first of symptom onset or index PCR test. To determine whether variant type or vaccination  
188 status was associated with virologic decay, we used the Kaplan-Meyer method to estimate the  
189 survivor function for two outcomes of interest: 1) time to conversion to negative PCR and 2) time  
190 to conversion to viral culture negative. For both outcomes we considered the earliest of date of  
191 symptom onset or first positive PCR test as the origin of observation. We defined the first day  
192 after the last positive PCR or positive culture as the date of exit. For individuals who had a  
193 positive PCR or culture on the final day of observation, they were censored as positive. For both  
194 outcomes, we constructed Kaplan-Meier curves of survival by variant and vaccination status.  
195 We categorized vaccination status as unvaccinated, vaccinated, for those who had received two  
196 COVID-19 vaccinations (or a single dose of the Johnson & Johnson/Janssen vaccine) at least

197 14 days prior to enrollment, and boosted for those who had received three COVID-19  
198 vaccinations (or a second dose of the Johnson & Johnson/Janssen vaccine) at least 14 days  
199 prior to enrollment. We compared time to PCR and culture version by sub-group using the log-  
200 rank method. We then fitted Cox proportional hazards models with both outcomes, and age,  
201 sex, vaccination status, and variant of infection as predictors. Finally, we graphed the  
202 distribution of viral load by BinaxNow antigen positivity and variant of infection and estimated  
203 the sensitivity and specificity of the tests compared to viral culture positivity, both overall and by  
204 time since symptom onset or first positive PCR test.

205

#### 206 *Study approval*

207 Study procedures were approved by the Human Subjects Institutional Review Board and the  
208 Institutional Biosafety Committee at Mass General Brigham. All participants gave verbal  
209 informed consent, as written consent was waived by the review committee based on the risk to  
210 benefit ratio of requiring in-person interactions for an observational study of COVID-19.

211

#### 212 *Acknowledgments*

213 The authors would like to thank study participants for willingness to engage in the study.

214

#### 215 *Funding*

216 This study was supported by the Massachusetts Consortium for Pathogen Readiness (grants to  
217 J.Z.L, J.E.L, M.B.G., M.J.S, and A.K.B.) and the Massachusetts General Hospital Department of  
218 Medicine (grant to J.M.V.). The BSL3 laboratory where viral culture work was performed is  
219 supported by the Harvard CFAR (P30 AI060354).

220

#### 221 *Author contributions*

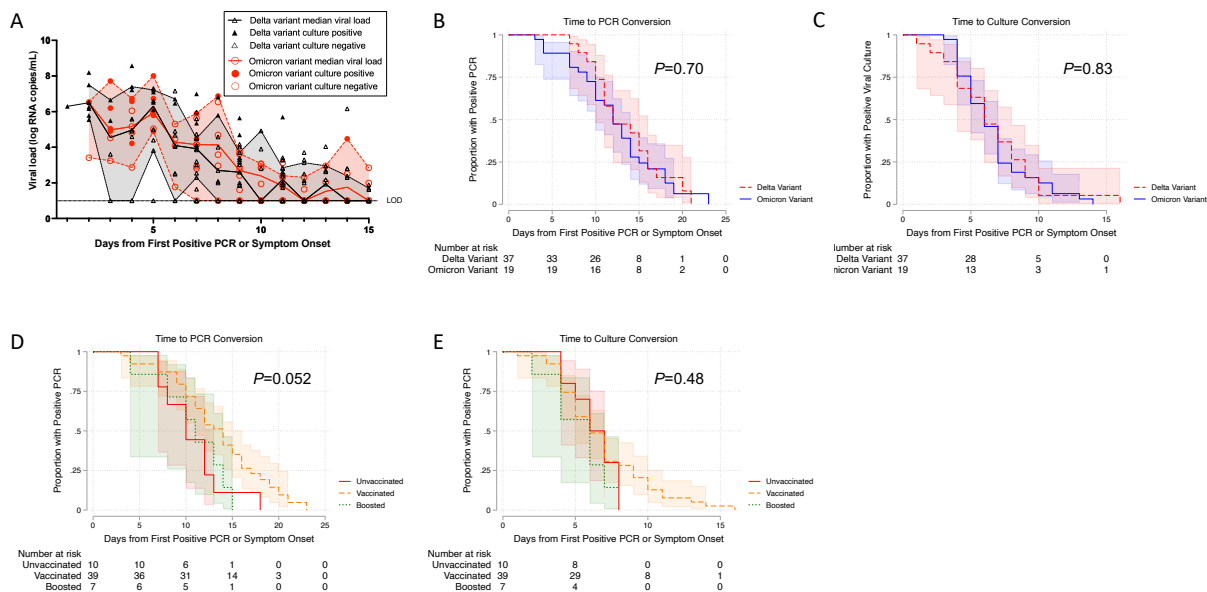


222 J.B., M.G.B., J.M.V., J.Z.L, J.E.L, M.J.S, and A.K.B. designed the work. J.B., C.M., J.R., R.U.,  
223 M.C.C., J.P.F., G.C., A.M.S., J.M., M.Y.L., A.S., T.L., A.K., M.M., Y.L., R.F.G., Z.R., S.L.I.,  
224 G.C.C. and T.D.V. performed the work. J.B., J.R., R.U., M.C.C., J.P.F, Y.L., J.Z.L, J.E.L, M.J.S,  
225 and A.K.B. analyzed and reported the work.

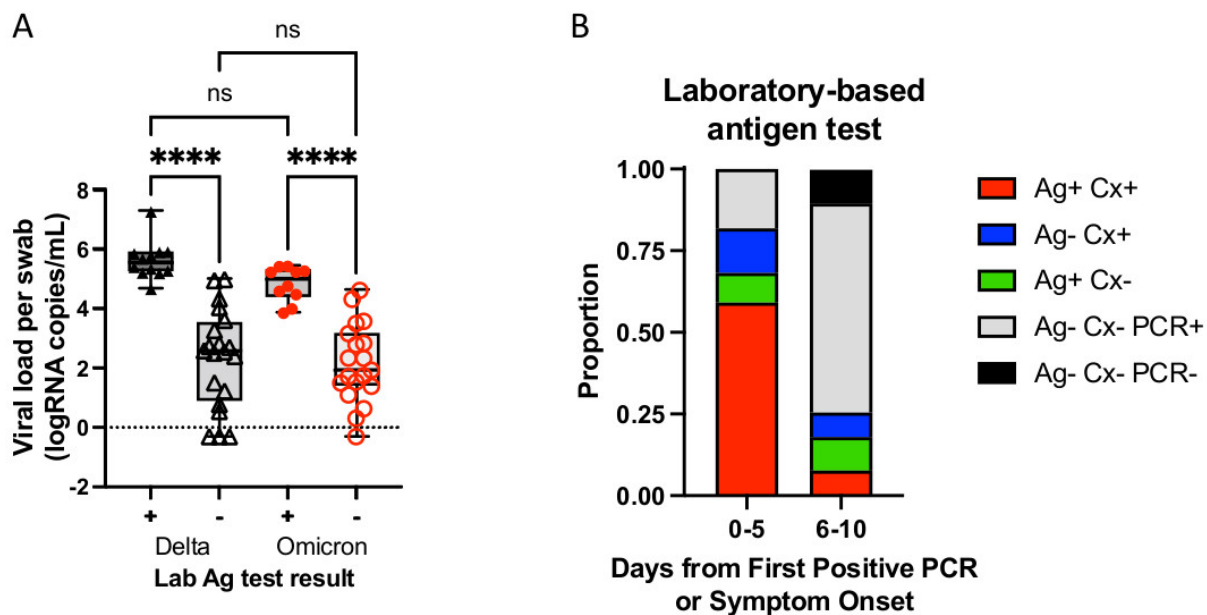
226  
227

- 228 1. Abbott S, Sherratt K, Gerstung M, Funk S. Estimation of the test to test distribution as a  
229 proxy for generation interval distribution for the Omicron variant in England. medRxiv  
230 2022:2022.01.08.22268920.
- 231 2. Ito K, Piantham C, Nishiura H. Relative instantaneous reproduction number of Omicron  
232 SARS-CoV-2 variant with respect to the Delta variant in Denmark. J Med Virol 2021.
- 233 3. Song J, Lee J, Kim M, et al. Serial Intervals and Household Transmission of SARS-CoV-2  
234 Omicron Variant, South Korea, 2021. Emerging Infectious Disease journal 2022;28.
- 235 4. Siedner MJ, Boucau J, Gilbert RF, et al. Duration of viral shedding and culture positivity  
236 with post-vaccination SARS-CoV-2 delta variant infections. JCI Insight 2021.
- 237 5. Palmer S, Wiegand AP, Maldarelli F, et al. New real-time reverse transcriptase-initiated  
238 PCR assay with single-copy sensitivity for human immunodeficiency virus type 1 RNA in plasma.  
239 J Clin Microbiol 2003;41:4531-6.
- 240 6. O'Toole A, Scher E, Underwood A, et al. Assignment of epidemiological lineages in an  
241 emerging pandemic using the pangolin tool. Virus Evol 2021;7:veab064.
- 242 7. Regan J, Flynn JP, Choudhary MC, et al. Detection of the omicron variant virus with the  
243 Abbott BinaxNow SARS-CoV-2 Rapid Antigen Assay. medRxiv 2021:2021.12.22.21268219.

244  
245  
246  
247  
248



249  
 250 Figure 1. Virologic decay from time of first positive PCR or symptom onset. Observations  
 251 indicate viral loads from nasal swabs from individual patient samples. Fit indicates the median  
 252 viral load at each time point by variant. Shaded areas represent 95% confidence intervals. 1B-  
 253 1E. Kaplan-Meier survival curves demonstrating time to negative PCR by viral variant (B) and  
 254 vaccination status (D) and time to negative viral culture by viral variant (C) and vaccination  
 255 status (E). Shaded areas indicate 95% confidence intervals from the survival curves. *P*-values  
 256 represent log-rank testing comparing the sub-groups on each plot.  
 257  
 258



259

260 Figure 2. Antigen testing on samples in viral transport media simultaneously cultured. Samples  
261 (11 participants with delta infection and 11 participants with omicron infection) subjected to  
262 whole genome sequencing, viral load testing, and viral culture were simultaneously tested for  
263 antigen using the BinaxNow kit. (A) Viral load per swab for samples tested by laboratory-based  
264 antigen test results for delta and omicron infections. (B) Proportion of samples, delta and  
265 omicron infections combined, that were antigen test positive, culture positive and PCR positive  
266 (Ag+ Cx+), antigen test negative culture positive and PCR positive (Ag- Cx+), antigen test  
267 positive, culture negative and PCR positive (Ag+ Cx-), antigen test negative, culture negative  
268 and PCR positive (Ag- Cx- PCR+) or antigen negative, culture negative and PCR negative  
269 organized by days from first positive PCR or symptoms onset (0-5 or 6-10 days).

270

271

272 Table 1. Cohort characteristics

	Omicron variant infection (n=19)	Delta variant infection (n=37)	P-value
Female, n (%)	14 (74%)	23 (62%)	0.55
Age, mean (SD)	39 (14)	42 (16)	0.61
Vaccination status, n (%)			0.04
Unvaccinated	1 (5%)	9 (24%)	
Vaccinated	13 (68%)	26 (70%)	
Boosted	5 (26%)	2 (5%)	
Days since last vaccination, mean (SD)	169 (130)	192 (77)	0.88
Symptomatic infection, n (%)	19 (100%)	36 (97%)	>0.99

273

274 Table 2. Cox proportional hazards model of time to PCR conversion

Covariate	Univariable Models		Multivariable Models	
	Hazard Ratio (95%CI)	P-value	Hazard Ratio (95%CI)	P-value
Age (10 years)	1.04 (0.87, 1.25)	0.68	1.05 (0.87, 1.27)	0.60
Sex				
Male	REF		REF	
Female	1.09 (0.60, 1.96)	0.78	1.13 (0.62, 2.05)	0.69
Vaccination status				
Unvaccinated	REF		REF	
Vaccinated	0.49 (0.23, 1.04)	0.06	0.51 (0.23, 1.09)	0.08
Boosted	1.00 (0.37, 2.71)	>0.99	1.16 (0.39, 3.45)	0.80
Variant				
Delta	REF	0.72	REF	
Omicron	0.90 (0.50, 1.61)		0.85 (0.45, 1.61)	0.62

275

276 Table 3. Cox proportional hazards model of time to culture conversion

Covariate	Univariable Models		Multivariable Models	
	Hazard Ratio (95%CI)	P-value	Hazard Ratio (95%CI)	P-value
Age	0.93 (0.78, 1.12)	0.47	0.96 (0.79, 1.15)	0.63
Sex				
Male	REF		REF	
Female	1.37 (0.77, 2.45)	0.28	1.42 (0.77, 2.59)	0.26
Vaccination status				
Unvaccinated	REF		REF	
Vaccinated	0.77 (0.37, 1.58)	0.47	0.82 (0.39, 1.71)	0.60
Boosted	1.17 (0.42, 3.22)	0.76	1.36 (0.46, 4.03)	0.57
Variant				
Delta	REF		REF	
Omicron	0.95 (0.54, 1.67)	0.85	0.86 (0.47, 1.58)	0.63

277

278 Table 4. Test validity of laboratory-based BinaxNow antigen testing compared to viral culture

Sub-Cohort	Specimens		Sensitivity (95% CI)	Specificity (95% CI)
	Tested			
Total	61		72% (16/22), (50-88%)	85% (33/39), (69-93%)
Delta	33		69% (9/13), (38-89%)	85% (17/20), (60-95%)
Omicron	28		78% (7/9), (36-96%)	84% (16/19), (59-95%)
Days 0-5	22		81% (13/16), (53-94%)	67% (4/6), (18-95%)
Days 6-10	39		50% (3/3), (11-89%)	88% (29/33), (71-96%)

279