

1 **Title: Influence of landscape patterns on the exposure of LASV across diverse regions**  
2 **within the Republic of Guinea**

3 Stephanie Longet\*<sup>1^</sup>, Cristina Leggio\*<sup>2,6</sup>, Joseph Akoi Bore\*<sup>1,3,4,5</sup>, Tom Tipton<sup>1</sup>, Yper Hall<sup>2</sup>,  
4 Fara Raymond Koundouno<sup>3</sup>, Stephanie Key<sup>6</sup>, Hilary Bower<sup>7</sup>, Tapan Bhattacharyya<sup>6</sup>, N’Faly  
5 Magassouba<sup>8</sup>, Stephan Günther<sup>9,10</sup> Ana-Maria Henao-Restrapo<sup>11</sup>, Jeremy S. Rossman<sup>5,12</sup>,  
6 Mandy Kader Konde<sup>4</sup>, Kimberly Fornace<sup>6,13</sup>, Miles W. Carroll<sup>1,2^</sup>

7 <sup>1</sup>Nuffield Department of Medicine, University of Oxford, Oxford United Kingdom (S.  
8 Longet, J A. Bore, T. Tipton, Miles W. Carroll)

9 <sup>2</sup>UK Health Security Agency, Porton Down, Salisbury, United Kingdom (C. Leggio, Y. Hall,  
10 Miles W. Carroll)

11 <sup>3</sup>Ministry of Health, Conakry, Guinea (J A. Bore, F R. Koundouno)

12 <sup>4</sup>Center for Training and Research on Priority Diseases including Malaria in Guinea,  
13 Conakry, Guinea (J A. Bore, M K. Konde)

14 <sup>5</sup>University of Kent, School of Biosciences, Canterbury, Kent, United Kingdom (J A. Bore, J  
15 S. Rossman)

16 <sup>6</sup>Faculty of Infectious and Tropical Diseases, London School of Hygiene and Tropical  
17 Medicine, London, United Kingdom (C. Leggio, S. Key, T. Bhattacharyya, K. Fornace)

18 <sup>7</sup>Faculty of Epidemiology and Population Health, London School of Hygiene and Tropical  
19 Medicine, London, United Kingdom (H. Bower)

20 <sup>8</sup>Projet Laboratoire Fièvres Hémorragiques, Conakry, Guinea (N. Magassouba)

21 <sup>9</sup>Bernhard Nocht Institute for Tropical Medicine, Hamburg, Germany (S. Günther)

22 <sup>10</sup>German Center for Infection Research, Partner Site Hamburg-Lübeck-Borstel-Riems (S.  
23 Günther)

24 <sup>11</sup>World Health Organisation, Geneva, Switzerland (A-M. Henao-Restrapo)

25 <sup>12</sup>NOTE: This preprint reports new research that has not been certified by peer review and should not be used to guide clinical practice.  
Research-Aid Networks, Chicago, IL, USA (J S. Rossman)

26 <sup>13</sup>Institute of Biodiversity, Animal Health and Comparative Medicine, University of Glasgow,  
27 Glasgow, United Kingdom (K. Fornace)

28

29 \*Contributed equally to first authorship

30 ^Corresponding author

31

32 **Abstract – 150 words**

33 Lassa fever virus (LASV) is the causative agent of Lassa fever, a disease endemic in  
34 West Africa. Exploring the relationships between environmental factors and LASV  
35 transmission across ecologically diverse regions can provide crucial information for the  
36 design of appropriate interventions and disease monitoring. We measured LASV-specific IgG  
37 seropositivity in 1286 sera collected in Coastal and Forested Guinea. Our results showed that  
38 exposure to LASV was heterogenous between the sites. The LASV IgG seropositivity was  
39 11.9% (95% CI 9.7-14.5) in Coastal site, while it was 59.6% (95% CI 55.5-63.5) in Forested  
40 region. Interestingly, exposure was significantly associated with age, with seropositivity  
41 increasing with age in the Coastal site. Finally, we also found significant associations  
42 between exposure risk to LASV and landscape fragmentation in Coastal and Forested  
43 regions. This study may help to define the regions with an increased exposure risk to LASV  
44 where a close surveillance of LASV circulation is needed.

45

46

47

48

## 49 **Introduction**

50 Lassa virus (LASV) is an enveloped and negative-sense, single-stranded RNA virus  
51 belonging to the *Arenaviridae* family causing Lassa Fever (LF) in humans (1). Initial clinical  
52 presentation is often non-specific and could be indicative of several other febrile illnesses (2).  
53 The mortality rate is unclear due to inconsistent reporting practices and lack of diagnostic  
54 services in most endemic areas but estimated to 5-20% in hospitalised patients (2) (3).  
55 *Mastomys natalensis* (*M. natalensis*) is considered as the main natural reservoir, a commensal  
56 rodent and agricultural pest which aggregates in human dwellings and surrounding fields (4).  
57 Recent studies have identified additional rodent reservoirs thus revealing the potential for a  
58 wider ecological niche for the virus (5). Both zoonotic and non-zoonotic transmission  
59 mechanisms have been described (6). Human LASV infections most commonly occur via  
60 infected rodent excreta, through contaminated food and inhalation of aerosols from rodent  
61 urine or droppings (7) (8). Less commonly, the virus can be transmitted via nosocomial  
62 transmission if proper barrier nursing methods are not followed (6) (9).

63 LASV is endemic in West Africa particularly in Nigeria, Sierra Leone, Liberia and  
64 Guinea (10) (11). A published estimate on annual cases of LASV infections in West Africa  
65 range from 100,000 to 300,000, with 5,000 to 10,000 estimated deaths per year and 80%  
66 asymptomatic infections. Further epidemiological studies are needed as these figures have  
67 been extrapolated from one longitudinal study conducted in Sierra Leone in 1987 (12).  
68 Increasing evidence suggests LASV is widespread and substantially under-reported by  
69 passive surveillance systems (13). Thus, characterising the distribution and transmission  
70 intensity of LASV in endemic areas is essential for the design of effective surveillance and  
71 disease control programmes.

72           It was observed that patients, including with mild symptoms, induced LASV-specific  
73 antibodies including long-lived IgG (14). Consequently, serological methods can measure  
74 long-lived antibody responses and enable estimation of cumulative exposure to pathogens  
75 (15). The analysis of age-stratified serological responses is a powerful tool to reconstruct  
76 historical patterns of transmission and distribution of previously unreported cases (16) (17).  
77 Measurement of LASV-antibody responses has been used to detect circulation of LASV  
78 across Guinea. Lukashevich *et al* found 25-55% LASV NP-specific IgG positivity among  
79 inhabitants of tropical secondary forest and guinea savannah but only 4-7% positivity among  
80 inhabitants of mountainous and coastal areas (18). Bausch *et al* investigated the epidemiology  
81 and clinical presentation of the Lassa fever in five Guinean hospitals in 2001. Lassa fever  
82 suspected cases were tested using an ELISA platform for antibody detection and the analysis  
83 confirmed Lassa fever in 22 (7%) of 311 suspected cases. An additional 43 people (14%) had  
84 LASV-specific IgG antibodies, indicating past exposure to LASV (19). Another study aiming  
85 to estimate the prevalence of Lassa IgG in human population of rural area of Guinea  
86 including Guéckédou, Lola and Yomou (Southern region) indicated 12.9% and 10.0 % IgG  
87 positivity in rural and urban areas, respectively (7). While these studies describe the historical  
88 circulation of LASV across Guinea, these studies were conducted in the 90's and early  
89 2000's. The current burden and the distribution of LASV in Guinea is largely unknown.  
90 Furthermore, to our knowledge, there are no studies which have estimated transmission  
91 intensity from serological data in Guinea and analysed the environmental risk factors. This  
92 study aimed to characterise LASV exposure in populations in two ecologically diverse  
93 regions of Guinea: the coastal Basse-Guinee region and the forested interior regions of  
94 Macenta prefecture and Guéckédou. Here, we describe LASV-specific IgG antibody levels  
95 within these populations, estimate transmission intensity using age-stratified antibody  
96 responses and explore associations with demographic and environmental risk factors.

## 97 **Materials and Methods**

### 98 **Ethical approval**

99 Basse Guinea site (Coastal site): The study was approved by the London School of  
100 Hygiene and Tropical Medicine Ethics committee (Ethics Ref: 17429) and the Guinean  
101 Ministry of Health (MoH). Macenta site: Ethical approval for research projects in Macenta  
102 and Guéckédou (Forested site) on human volunteers was obtained from the ‘Comité national  
103 d’éthique pour la recherche en santé’ (CNERs) of Republic of Guinea on the 16<sup>th</sup> of March  
104 2017 (012/CNERS/17).

### 105 **Study sites**

106 The samples used in this study were initially collected as part of three separate studies  
107 focusing on three distinct sites within two geographically diverse regions of Guinea. Basse-  
108 Guinee is the coastal region of Guinea, extending for 30-40 miles inland from the Atlantic  
109 Ocean to the coastal plains (**Figure 1A**). Macenta prefecture and the city of Guéckédou are  
110 located to the south-east of the country, close to the border with Liberia and Sierra Leone,  
111 within the forested region of Guinea (**Figure 1A**).

### 112 **Study participants**

113 Samples from Basse-Guinee were collected in 2016 as part of a clinical trial  
114 evaluating the safety and immunogenicity of the VSV-EBOV Ebola Vaccine in partnership  
115 with the Guinean MoH, the World Health Organisation (WHO) and Public Health England  
116 (PHE). The samples used for our study were taken prior to vaccination. For this study site,  
117 702 samples were randomly selected from the PHE/WHO vaccine trial master database by  
118 using the Excel random function and tested for the presence of LASV-specific IgG.  
119 Information on volunteers age, sex and village of residence provided at the time of  
120 vaccination was used. The selected samples, (participants 6-99 years of age) originated from

121 7 prefectures within Basse-Guinee, encompassing 24 subprefectures and 29  
122 villages/neighbourhoods.

123 Samples from Macenta region were collected from February to December 2017 as  
124 part of a sero-epidemiology study on Ebola virus which included both affected and non-  
125 affected villages during the 2014-2016 Ebola Virus Diseases (EVD) outbreak (20). In total,  
126 517 participants (17- 90 years of age) living in 44 villages located in 7 subprefectures were  
127 enrolled. The volunteers included bush meat hunters, their family members, local health care  
128 workers and the general population of the village. Volunteers under 16 years of age, pregnant  
129 women, travellers or visitors, and people suffering from chronic disease were excluded from  
130 the original study. In total, 516 samples from the Macenta cohort were analysed. For the  
131 purpose of the analysis, 68 samples from Guéckédou city, collected in 2018 in the context of  
132 a longitudinal study of EVD survivors, were included in the Macenta population. Both  
133 Guéckédou city and Macenta prefecture are forested regions. All samples were stored at -  
134 80°C in a temperature monitored unit within the PHE Porton Down UK laboratories.  
135 Consent forms stating the study aims and their rights as volunteers were signed prior to  
136 sample collection for each individual study.

### 137 **Blood sample collection and processing**

138 A volume (5-20ml) of human peripheral blood was collected into non-anticoagulant  
139 BD Vacutainer® blood collection tubes from participants. Blood clotted within two hours and  
140 transported to the laboratory in a cool box at 4°C. Samples were centrifuged at 2,000 x g for  
141 10 minutes at room temperature and serum aliquoted into 2 ml microtube RT-PCR tubes  
142 (Starsted, REF 72.694.406) in an air purifying class II microbiological safety cabinet (Envair  
143 Ltd, England). Aliquots of sera were shipped on dry ice at -20°C and processed at PHE  
144 Porton Down laboratories (England).

## 145 **Samples analysis by LASV-specific ELISA**

146 To measure anti-LASV IgG specific antibodies in sera, the patented BLACKBOX<sup>®</sup>  
147 LASV IgG kit from Bernhard Nocht Institute for Tropical Medicine (BNITM) in Germany  
148 (ELG.004) used for qualitative serological detection of acute or past LASV infection (21)  
149 (22). The kit was used as per the manufacturer's instructions. Each sample was run as single  
150 replicate. All reagents were provided by BNITM. Positive and negative controls were  
151 provided with the kit. Blank and background wells were added to monitor non-specific  
152 bindings of proteins to reagent contaminants or to the ELISA plate surface. Briefly, initial  
153 plate washing was performed using pre-diluted wash buffer. Then, 25uL of diluted  
154 biotinylated recombinant LASV antigen (nucleoprotein) were transferred onto the ELISA  
155 plate and 25uL of diluted control or patient sample added prior to plate incubation for 24h at  
156 4°C in a humid chamber. After a wash step, 50uL of diluted streptavidin/Horseradish  
157 Peroxidase (HRP) were added and plate incubated for 1h at 4°C. Another wash step was  
158 performed, 100uL/well of 3,3',5,5'-Tetramethylbenzidine (TMB) peroxidase substrate were  
159 added and plate incubated for 10min at room temperature in the dark. Finally, 100uL/well of  
160 Stop solution (1M H<sub>2</sub>SO<sub>4</sub>) were added and optical density (OD) readings (450-620nm)  
161 obtained by using SpectraMax plate reader (software SoftMaxPro v9). As recommended in  
162 the BLACKBOX<sup>®</sup> LASV IgG ELISA manual, results were interpreted as valid if the  
163 following criteria were met: OD<sub>450</sub>-OD<sub>620</sub> of negative control < 0.10 and OD<sub>450</sub>-OD<sub>620</sub> of  
164 positive control > 1.00. Average absolute OD<sub>450</sub>-OD<sub>620</sub> absorbance value for negative  
165 control samples ( $OD_{Neg,AV}$ ) was used to calculate the assay cut off  $OD_{CO}$  according to the  
166 following formula:

$$167 \quad OD_{Neg,AV} + 0.150 = OD_{CO}$$

168 Index Values (IV) for the tested samples were calculated as follows:

169  $IV_{sample} = OD_{450} - OD_{620} \text{ (sample)} / OD_{CO}$

170 Results classification for index values was carried out as follows:

171  $IV_{sample} \geq 1.00 = \text{POSITIVE}$

172  $0.90 < IV_{sample} < 1.00 = \text{EQUIVOCAL}$

173  $IV_{sample} \leq 0.90 = \text{NEGATIVE}$

174 **Environmental and spatial covariates**

175 To assess the impact of land cover and other environmental covariates on LASV  
176 exposure, we assembled a dataset of remote-sensing derived land cover maps from 2017 at  
177 100m resolution (23). We reclassified land cover into the following categories: closed forest  
178 (canopy cover >70%), open forest (canopy cover 15-70%), shrubs, herbaceous vegetation  
179 (plants without persistent stems and canopy cover <10%) and urban/built up areas. We  
180 additionally extracted data on the percentage canopy cover for all sites. Population density  
181 was obtained from village level population estimates of all sampled areas.

182 As sampled villages were only geolocated to centroids, we extracted environmental  
183 data within buffer radii of 500m, 1km, 2km, 5km and 10km from the village centroid to  
184 represent the possible distributions of the village and lands used (24). For all buffer radii, we  
185 extracted the proportions of different land cover types and the mean canopy cover. To  
186 evaluate the importance of landscape configuration, we additionally extracted metrics on  
187 fragmentation, including perimeter area ratio, shape index (patch perimeter divided by the  
188 minimum possible patch perimeter) and fractal dimension index (an index of shape  
189 complexity) (25). In ecology, fragmentation is defined as the breaking up of habitat and it is  
190 often used as a measurable index, usually related to human activity, which produces loss or  
191 reduction in habitat size or increased isolation of habitats.



## 192 **Statistical analyses**

193 To characterise transmission intensity in both sites, we first graphed both continuous  
194 antibody responses and age-specific estimates of seropositivity. Reversible catalytic models  
195 were fit to age sero-prevalence data using maximum likelihood methods (15). We used  
196 profile likelihood plots to explore possible historical changes in transmission intensity, with  
197 final models selected using likelihood ratio tests (26). Final models were used to estimate  
198 seroconversion rates (SCR).

199 We additionally assessed whether fine-scale patterns of serological exposure were  
200 associated with landscape characteristics. As environmental variables can be associated with  
201 risk at different spatial scales, we used a data-driven approach to identify environmental risk  
202 factors (27). First, mixed-effects logistic regression models were run for each environmental  
203 variable at each spatial scale (126 in total) to identify factors associated with LASV  
204 seropositivity. Models were run separately for both sites, with the primary outcome as the  
205 binary classification for individual level seropositivity. Models were fit with village as a  
206 random effect to account for observations within villages lacking independence. We first  
207 assessed associations with key demographic factors, including gender, continuous age and  
208 age category. For the Macenta/Guéckédou (forested region) model, only environmental  
209 predictors were included as demographic factors (age, gender) were not associated with  
210 exposure risks. For the coastal site, age category was included in all models in addition to  
211 environmental predictors. When assessing for inclusion in the multivariate analysis,  
212 univariate results were considered significant at  $p < 0.2$  to avoid exclusion of variables that  
213 alone lack significance but contribute in presence of other variables. Highly correlated  
214 variables (Pearson's correlation coefficient  $> 0.75$ ) were removed. Where environmental  
215 covariates appeared significantly associated with the outcome of interest across multiple  
216 buffer radii, inclusion in the final model was based on Akaike's Information Criteria (AIC).

217 Final multivariate models were fit in a forward stepwise manner using AIC, with variables  
218 considered significant at  $p < 0.05$ .

## 219 Results

220 Within this study, we assessed LASV IgG seropositivity in 1286 individuals using  
221 serum samples collected from the period of 2016 to 2018 in Guinea. In the Coastal site, 702  
222 samples were analysed from 7 prefectures, encompassing 24 subprefectures and 29  
223 villages/neighbourhoods (**Figure 1A, Table 1, Appendix Table 1**). In the Forested site, 516  
224 samples were analysed from Macenta prefecture and 68 from Guéckédou city. The Macenta  
225 samples originated from 7 subprefectures encompassing 44 villages (**Figure 1A, Table 1,**  
226 **Appendix Table 2**).

| Coastal site      |             | Forested Region   |             |
|-------------------|-------------|-------------------|-------------|
| N                 | <b>702</b>  | N                 | <b>584</b>  |
|                   |             | Macenta           | 516         |
|                   |             | Guéckédou         | 68          |
| Female            | 243 (34.6%) | Female            | 262 (44.9%) |
| Male              | 459 (65.4%) | Male              | 322 (51.1%) |
| Age range (years) | 6-99        | Age range (years) | 17-90       |
| Mean age (years)  | 32.3        | Mean age (years)  | 38.8        |
| Sampling dates    | 2016        | Sampling dates    | 2017-2018   |

227 **Table 1:** Study participants of coastal and forested regions.

228 We observed that exposure to LASV was highly heterogenous both between (**Figure 1A**) and  
229 within (**Figure 1B**) each study site. The LASV IgG seropositivity was 11.9% (95% CI 9.7-

230 14.5) in the Coastal site (**Figure 1B, Appendix Table 1**), while it was 59.6% (95% CI 55.5-  
231 63.5) in the Forested site (**Figure 1B, Appendix Table 2**).

232

**A.**



233

234

235

236

237

238

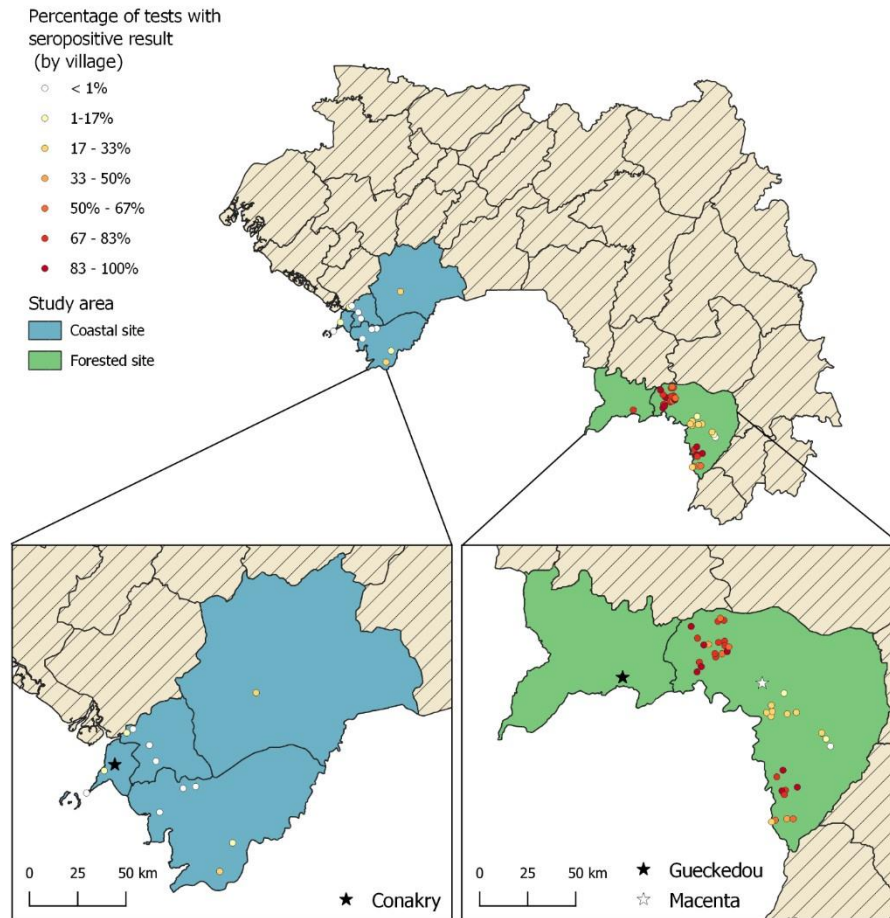
239

240

241

242

**B.**



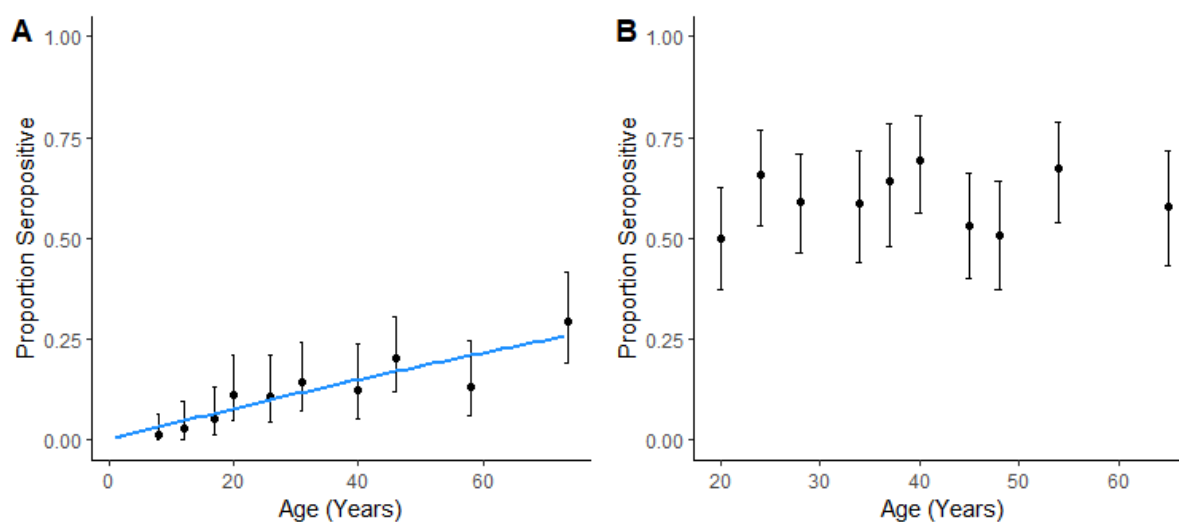
243

244 **Figure 1: A)** Map of West Africa and Guinea showing the study sites: Coastal and Forested  
245 sites. **B)** LASV-specific IgG seropositivity (%) by village across the Coastal and Forested  
246 sites.

247 Demographic characteristics of exposed individuals varied by study site. In the  
248 Coastal site, seropositivity in females was 9.0% (95% CI 5.8-13.1) and in males was 13.5%  
249 (95% CI 11.0-17.0). For the Forested site, seropositivity in females was 61.8% (95% CI 56.0-  
250 67.7) and in males was 58% (95% CI 52.5-63.3). Gender was not significantly associated  
251 with seropositivity in either site.

252 Age patterns of seropositivity differed markedly between sites. In the Coastal site,  
253 exposure was strongly associated with age, with seropositivity increasing with age (**Figure**

254 **2A**). However, no correlation was found between the quantitative antibody responses  
255 expressed by Index Value and age among seropositive individuals (**Appendix Figure 1**).  
256 Within this population, reversible catalytic models estimated the force of infection  
257 (Seroconversion rate = SCR) as 0.0041 (95% CI: 0.0033 – 0.0050). No changes in historical  
258 transmission intensity were detected ( $p = 0.328$ ). In contrast, within the Forested site, no clear  
259 age patterns were identified and neither continuous nor categorical age were associated with  
260 individual seropositivity (**Figure 2B**). Although age ranges for included individuals were  
261 different between both sites (**Table 1**), substantial differences in exposure risks were detected  
262 in similar age groups between sites. For example, individuals aged 17-20 had an estimated  
263 seropositivity of 5.4% (95% CI: 1.5-13.3%) in the Coastal site compared to 50.0% in the  
264 Forested site (95% CI: 37.2 – 62.8%). The high proportions of seropositivity in the youngest  
265 age groups and lack of association with age precluded fitting reversible catalytic models for  
266 the Forested region.

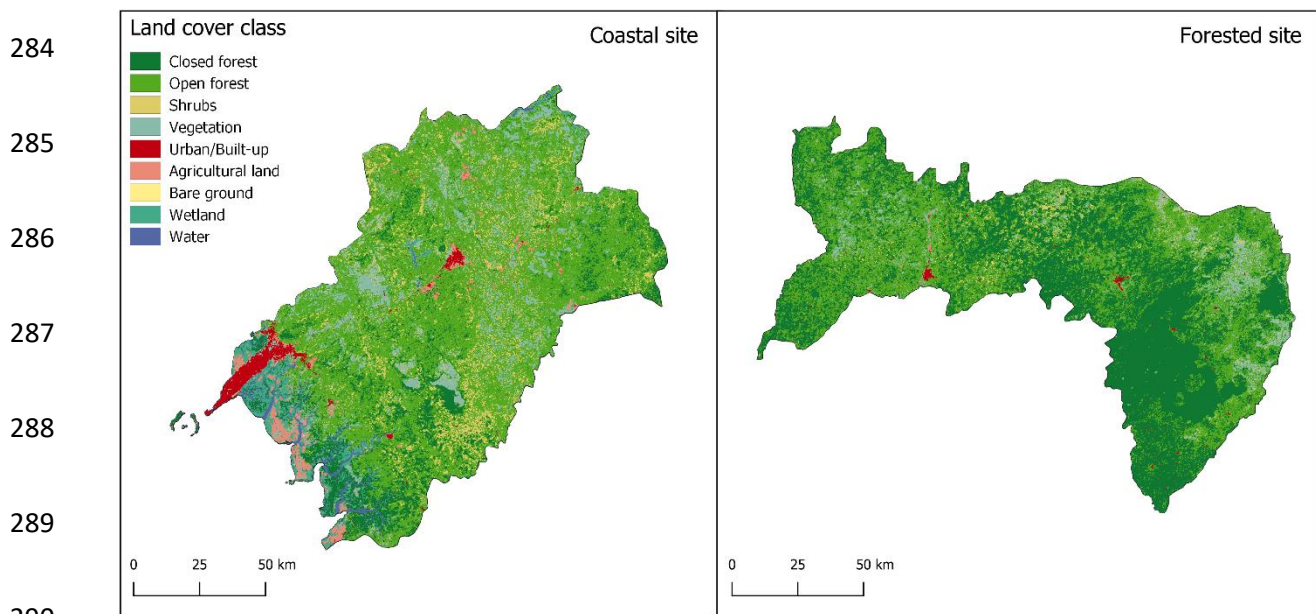


267  
268 **Figure 2.** Proportion seropositive with 95% Confidence intervals by age decile for Coastal  
269 site (**A**) and Forested site (**B**), blue line is modelled SCR curve.

270

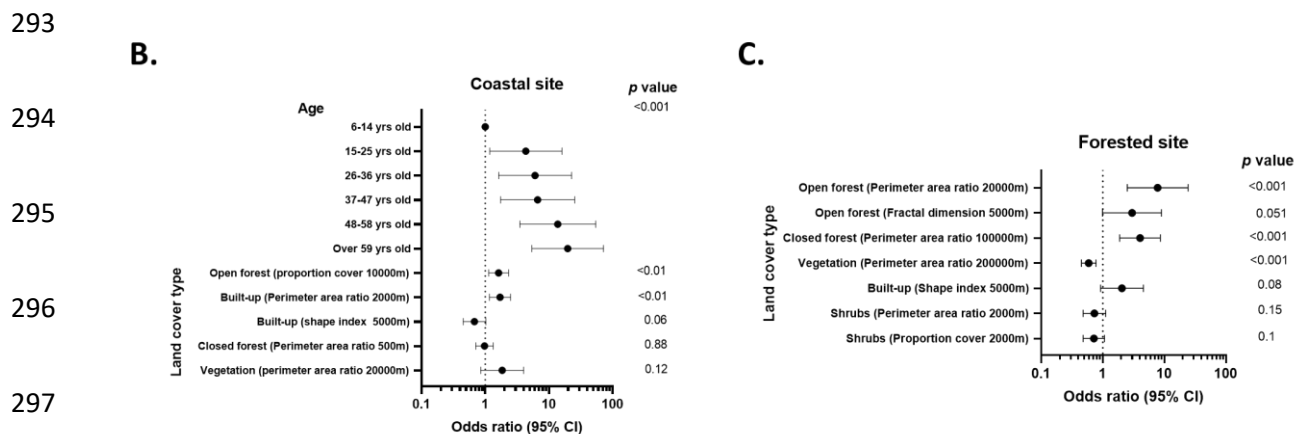
271 Despite clear differences in transmission between sites, strong associations between  
272 exposure and environmental factors were identified for both sites. The land cover classes for  
273 both sites are shown in **Figure 3A**. As characterised by perimeter area ratios, fragmentation  
274 was strongly positively associated with exposure risk for both sites (**Figure 3B and C**,  
275 **Appendix Tables 3 and 4**). In the Coastal site, the proportion of open forests and  
276 fragmentation of built up areas increased odds of exposure. Other land cover factors, such as  
277 closed forests and vegetation fragmentation, were not significantly associated with exposure  
278 risks but improved overall model fit (**Figure 3B, Appendix Table 3**). Within the Forested  
279 site, increased fragmentation of both open and closed forests was positively associated with  
280 risk, while fragmented vegetation was protective (**Figure 3C, Appendix Table 4**). Across  
281 both sites, significant variables were identified at different spatial scales, consistent with  
282 other studies of environmental risk factors for zoonotic diseases (28).

283 **A.**



291

292



298 **Figure 3: A)** Land cover classes for the Coastal and Forested sites. **B and C)** Associations  
 299 between exposure risk and environmental factors in the Coastal (**B**) and Forested sites (**C**).  
 300 OR: Odd ratios. CI: Confidence intervals.

### 301 Discussion

302 Despite the growing interest in Lassa fever, there is limited up-to-date information  
 303 regarding the seropositivity of LASV in West Africa. To our knowledge, this study is the first  
 304 one to estimate transmission intensity from serological data in Guinea and analyse the  
 305 environmental risk factors. We found that LASV NP-specific IgG seropositivity differed  
 306 between our study sites: Coastal and Forested regions. In 1993, Lukashevich and colleagues  
 307 had also found a high LASV NP-specific IgG positivity among inhabitants of tropical  
 308 secondary forest (areas near Guéckédou, Yomou, and Lola) and guinea savannah (Faranah  
 309 and Kindia areas) (25-55%) and a lower positivity among inhabitants of mountainous (Pita,  
 310 Labe, and Mali) and coastal areas (Boffa, Boké) (4-7%) (18). In our study, we found that  
 311 gender was not significantly associated with seropositivity in either site, which is in line with  
 312 other studies conducted both in Guinea and Sierra Leone (18) (12). Interestingly, our findings  
 313 showed a significant increase in LASV IgG seropositivity with age in the Coastal site but not  
 314 in the Forested site. Although in the above-mentioned study, Lukashevich and colleagues did  
 315 not detect any correlation between antibody prevalence and age in any studied regions (18),

316 differences in age patterns of seropositivity between regions were observed in other studies in  
317 West Africa. A study conducted in Forested Guinea in the year 2000, found individuals under  
318 10 and between 20 and 29 years of age to have the highest LASV IgG prevalence (7). A  
319 study conducted in Sierra Leone, found antibody prevalence to increase with age, reaching a  
320 peak at 20-50 years of age and decreasing thereafter (12). A similar trend was reported in  
321 another pilot study conducted in 2015 in Nigeria (29). Age, often associated with occupation  
322 or daily activities, may play a role on exposure but our results in the forested region and  
323 others studies suggest that in some regions, other factors such as environmental features may  
324 have a bigger impact on exposure risk. It is also possible that more localised exposure within  
325 the household plays a role for viral transmission. Finally, we found an association between  
326 landscape patterns and exposure risk for both study sites. Associations between landscape  
327 fragmentation and exposure risk to zoonotic diseases have been observed for other zoonotic  
328 diseases such as malaria (28) (30) and Ebola virus (31). In our study, the fragmentation of  
329 forests and their proportion appear to have an impact on exposure risk but their exact role in  
330 the complex dynamics of LASV circulation remains to be determined.

331         The murine population is another variable involved in the distribution of LASV. In  
332 one study looking at LASV-specific IgG prevalence in the reservoir host *M. natalensis* in  
333 Guinea, the authors found that 0% of the *M. natalensis* were infected with Lassa virus in the  
334 low seroprevalence area (the coastal region) while 5.4%-32.1 % of sampled mice were  
335 infected with the virus in the high seroprevalence region (forested guinea) (10). Another  
336 study sampled a total of 1616 small rodents (956 *Mastomys* sp.) captured in 444 households  
337 in the savanna, mixed savanna-forest and forest region of Guinea were studied for LASV-  
338 specific antibody and antigen detection. The authors found that the proportion of LASV  
339 infected rodents per region ranged from 0% - 9%. It was higher in the savannah and forested  
340 areas. Interestingly, they observed that the proportion of infected animals in each village was



341 highly variable amongst neighboring villages, identifying ‘hot spots’ of LASV infected mice  
342 clustering within few homes, thus adding a further element that could drive the highly  
343 heterogeneous distribution of LASV (32). Even though the distribution of *M. natalensis* is an  
344 important factor, its presence may not be sufficient to explain the IgG seropositivity in  
345 humans (33) (10), as additional rodent reservoirs have been identified revealing the potential  
346 for a wider ecological niche for LASV (5).

347 Finally, some limitations of our study can be highlighted. The type of ELISA used to  
348 assess LASV seropositivity may impact on the results. Even though the BLACKBOX IgG  
349 ELISA was shown to be sensitive and very specific (90% and 99%) when compared to the  
350 immunofluorescence assay (21), it was not tested against other arenaviruses due to lack of  
351 suitable serum panels. Consequently, we cannot fully exclude the potential circulation of  
352 related, or perhaps yet undescribed arenaviruses, in specific regions (34) and a partial cross-  
353 reactivity of IgG antibodies against other arenaviruses. In addition, as the samples were  
354 collected as part of a vaccine evaluation and a sero-epidemiology study on Ebola virus, the  
355 sampling procedure was not standardised between the studies. It would have been useful to  
356 have additional information on individual’s LASV exposure risks i.e. occupation, relevant  
357 medical history, hunting/foraging habits, location of previous residence, methods for food  
358 storage and rodents trapping around the house. It would be useful to know the number of  
359 people in the household, the quality of the building, as well as presence of rodent burrows in  
360 or around the house. Finally, this study measured only IgG antibodies in sera collected at one  
361 timepoint. As such, our data does not allow us to capture the potential effect of changes in  
362 seasonal rodent activity or vegetation patterns surrounding the villages. Also, since people  
363 tend to move frequently across wide regions, either to find work during harvest season or to  
364 hunt (35) and some may have moved away from Ebola virus disease hotspots during the

365 2013-2016 outbreak, they may have been exposed to LASV in a different location from the  
366 one in which they resided at the time of sampling.

367         Similar to other endemic tropical diseases, LASV dynamics result from complex  
368 interactions between several human and environmental factors. Our study compared the  
369 LASV-specific IgG seropositivity in Coastal and Forested regions in Guinea and for the first  
370 time described in detail association between exposure to LASV and landscape patterns.  
371 Enhanced knowledge of regions with an a potentially increased exposure risk to LASV can  
372 help to improve the epidemiological surveillance, devise one health interventions and  
373 highlight potential trial sites to assess new LASV vaccines and therapeutics.

#### 374 **Acknowledgments**

375         This work was funded by the US Food & Drug Administration (HHSF223201510104C)  
376 and the CGIAR Research Program on Agriculture for Nutrition and Health (A4NH). SG was  
377 supported by grants GU883/5-1 and GU883/5-2 from the German Research Foundation (DFG).  
378 KMF is supported by a Sir Henry Dale Fellowship jointly funded by the Wellcome Trust and  
379 the Royal Society (Grant no. 221963/Z/20/Z).

#### 380 **References**

- 381 1. Hensley, L.E.; Smith, M.A.; Geisbert, J.B.; Fritz, E.A.; Daddario-DiCaprio, K.M.;  
382 Larsen, T.; et al. Pathogenesis of Lassa fever in cynomolgus macaques. *Virology* 2011,  
383 8, 205.
- 384 2. Richmond, J.K.; Baglolle, D.J. Lassa fever: epidemiology, clinical features, and social  
385 consequences. *BMJ* 2003, 327, 1271-1275.
- 386 3. McCormick, J.B.; Walker, D.H.; King, I.J.; Webb, P.A.; Elliott, L.H.; Whitfield, S.G.;  
387 et al. Lassa virus hepatitis: a study of fatal Lassa fever in humans. *Am J Trop Med  
388 Hyg* 1986, 35, 401-407.

- 389 4. Monath, T.P.; Newhouse, V.F.; Kemp, G.E.; Setzer, H.W.; Cacciapuoti, A. Lassa  
390 virus isolation from *Mastomys natalensis* rodents during an epidemic in Sierra Leone.  
391 *Science* 1974, 185, 263-265.
- 392 5. Olayemi, A.; Oyeyiola, A.; Obadare, A.; Igbokwe, J.; Adesina, A.S.; Onwe, F.; et al.  
393 Widespread arenavirus occurrence and seroprevalence in small mammals, Nigeria.  
394 *Parasit Vectors* 2018, 11, 416.
- 395 6. Fisher-Hoch, S.P.; Tomori, O.; Nasidi, A.; Perez-Oronoz, G.I.; Fakile, Y.; Hutwagner,  
396 L.; et al. Review of cases of nosocomial Lassa fever in Nigeria: the high price of poor  
397 medical practice. *BMJ* 1995, 311, 857-859.
- 398 7. Kerneis, S.; Koivogui, L.; Magassouba, N.; Koulemou, K.; Lewis, R.; Aplogan, A.; et  
399 al. Prevalence and risk factors of Lassa seropositivity in inhabitants of the forest  
400 region of Guinea: a cross-sectional study. *PLoS Negl Trop Dis* 2009, 3, e548.
- 401 8. Stephenson, E.H.; Larson, E.W.; Dominik, J.W. Effect of environmental factors on  
402 aerosol-induced Lassa virus infection. *J Med Virol* 1984, 14, 295-303.
- 403 9. Ajayi, N.A.; Nwigwe, C.G.; Azuogu, B.N.; Onyire, B.N.; Nwonwu, E.U.;  
404 Ogonnaya, L.U.; et al. Containing a Lassa fever epidemic in a resource-limited  
405 setting: outbreak description and lessons learned from Abakaliki, Nigeria (January-  
406 March 2012). *Int J Infect Dis* 2013, 17, e1011-1016.
- 407 10. Lecompte, E.; Fichet-Calvet, E.; Daffis, S.; Koulemou, K.; Sylla, O.; Kourouma, F.;  
408 et al. *Mastomys natalensis* and Lassa fever, West Africa. *Emerg Infect Dis* 2006, 12,  
409 1971-1974.
- 410 11. Ogbu, O.; Ajuluchukwu, E.; Uneke, C.J. Lassa fever in West African sub-region: an  
411 overview. *J Vector Borne Dis* 2007, 44, 1-11.

- 412 12. McCormick, J.B.; Webb, P.A.; Krebs, J.W.; Johnson, K.M.; Smith, E.S. A  
413 prospective study of the epidemiology and ecology of Lassa fever. *J Infect Dis* 1987,  
414 155, 437-444.
- 415 13. Gibb, R.; Moses, L.M.; Redding, D.W.; Jones, K.E. Understanding the cryptic nature  
416 of Lassa fever in West Africa. *Pathog Glob Health* 2017, 111, 276-288.
- 417 14. Bond, N.; Schieffelin, J.S.; Moses, L.M.; Bennett, A.J.; Bausch, D.G. A historical  
418 look at the first reported cases of Lassa fever: IgG antibodies 40 years after acute  
419 infection. *Am J Trop Med Hyg* 2013, 88, 241-244.
- 420 15. Drakeley, C.J.; Corran, P.H.; Coleman, P.G.; Tongren, J.E.; McDonald, S.L.;  
421 Carneiro, I.; et al. Estimating medium- and long-term trends in malaria transmission  
422 by using serological markers of malaria exposure. *Proc Natl Acad Sci U S A* 2005,  
423 102, 5108-5113.
- 424 16. Greenhouse, B.; Daily, J.; Guinovart, C.; Goncalves, B.; Beeson, J.; Bell, D.; et al.  
425 Priority use cases for antibody-detecting assays of recent malaria exposure as tools to  
426 achieve and sustain malaria elimination. *Gates Open Res* 2019, 3, 131.
- 427 17. Arnold, B.F.; Scobie, H.M.; Priest, J.W.; Lammie, P.J. Integrated Serologic  
428 Surveillance of Population Immunity and Disease Transmission. *Emerg Infect Dis*  
429 2018, 24, 1188-1194.
- 430 18. Lukashevich, I.S.; Clegg, J.C.; Sidibe, K. Lassa virus activity in Guinea: distribution  
431 of human antiviral antibody defined using enzyme-linked immunosorbent assay with  
432 recombinant antigen. *J Med Virol* 1993, 40, 210-217.
- 433 19. Bausch, D.G.; Demby, A.H.; Coulibaly, M.; Kanu, J.; Goba, A.; Bah, A.; et al. Lassa  
434 fever in Guinea: I. Epidemiology of human disease and clinical observations. *Vector*  
435 *Borne Zoonotic Dis* 2001, 1, 269-281.

- 436 20. Thom, R.; Tipton, T.; Strecker, T.; Hall, Y.; Akoi Bore, J.; Maes, P.; et al.  
437 Longitudinal antibody and T cell responses in Ebola virus disease survivors and  
438 contacts: an observational cohort study. *Lancet Infect Dis* 2021, 21, 507-516.
- 439 21. Gabriel, M.; Adomeh, D.I.; Ehimuan, J.; Oyakhilome, J.; Omomoh, E.O.; Ighodalo,  
440 Y.; et al. Development and evaluation of antibody-capture immunoassays for  
441 detection of Lassa virus nucleoprotein-specific immunoglobulin M and G. *PLoS Negl*  
442 *Trop Dis* 2018, 12, e0006361.
- 443 22. Schmitz, H.; Gabriel, M.; Emmerich, P. Specific detection of antibodies to different  
444 flaviviruses using a new immune complex ELISA. *Med Microbiol Immunol* 2011,  
445 200, 233-239.
- 446 23. Buchhorn, M.; Smets, B.; Bertels, L.; De Roo, B.; Lesiv, M.; Tsendbazar, N.-E.; et al.  
447 Copernicus Global Land Service: Land Cover 100m: collection 3: epoch 2019: Globe.  
448 Zenodo 2020.
- 449 24. Brock, P.M.; Fornace, K.M.; Grigg, M.J.; Anstey, N.M.; William, T.; Cox, J.; et al.  
450 Predictive analysis across spatial scales links zoonotic malaria to deforestation. *Proc*  
451 *Biol Sci* 2019, 286, 20182351.
- 452 25. McGarigal, K.; Cushman, S.; Catherine Neel, M.; E., E. Spatial Pattern Analysis  
453 Program for Categorical Maps. Available online:  
454 [www.umass.edu/landeco/research/fragstats/fragstats.html](http://www.umass.edu/landeco/research/fragstats/fragstats.html)
- 455 26. Stewart, L.; Gosling, R.; Griffin, J.; Gesase, S.; Campo, J.; Hashim, R.; et al. Rapid  
456 assessment of malaria transmission using age-specific sero-conversion rates. *PLoS*  
457 *One* 2009, 4, e6083.
- 458 27. Fornace, K.M.; Brock, P.M.; Abidin, T.R.; Grignard, L.; Herman, L.S.; Chua, T.H.; et  
459 al. Environmental risk factors and exposure to the zoonotic malaria parasite

- 460 Plasmodium knowlesi across northern Sabah, Malaysia: a population-based cross-  
461 sectional survey. *Lancet Planet Health* 2019, 3, e179-e186.
- 462 28. Stefani, A.; Dusfour, I.; Correa, A.P.; Cruz, M.C.; Dessay, N.; Galardo, A.K.; et al.  
463 Land cover, land use and malaria in the Amazon: a systematic literature review of  
464 studies using remotely sensed data. *Malar J* 2013, 12, 192.
- 465 29. Tobin, E.; Asogun, D.; Akpede, N.; Adomeh, D.; Odia, I.; Gunther, S. Lassa fever in  
466 Nigeria: Insights into seroprevalence and risk factors in rural Edo State: A pilot study.  
467 *J Med Trop* 2015, 17, 51-55.
- 468 30. Fornace, K.M.; Abidin, T.R.; Alexander, N.; Brock, P.; Grigg, M.J.; Murphy, A.; et  
469 al. Association between Landscape Factors and Spatial Patterns of Plasmodium  
470 knowlesi Infections in Sabah, Malaysia. *Emerg Infect Dis* 2016, 22, 201-208.
- 471 31. Olivero, J.; Fa, J.E.; Real, R.; Marquez, A.L.; Farfan, M.A.; Vargas, J.M.; et al.  
472 Recent loss of closed forests is associated with Ebola virus disease outbreaks. *Sci Rep*  
473 2017, 7, 14291.
- 474 32. Demby, A.H.; Inapogui, A.; Kargbo, K.; Koninga, J.; Kourouma, K.; Kanu, J.; et al.  
475 Lassa fever in Guinea: II. Distribution and prevalence of Lassa virus infection in  
476 small mammals. *Vector Borne Zoonotic Dis* 2001, 1, 283-297.
- 477 33. Marien, J.; Kourouma, F.; Magassouba, N.; Leirs, H.; Fichet-Calvet, E. Movement  
478 Patterns of Small Rodents in Lassa Fever-Endemic Villages in Guinea. *Ecohealth*  
479 2018, 15, 348-359.
- 480 34. Coulibaly-N'Golo, D.; Allali, B.; Kouassi, S.K.; Fichet-Calvet, E.; Becker-Ziaja, B.;  
481 Rieger, T.; et al. Novel arenavirus sequences in *Hylomyscus* sp. and *Mus* (*Nannomys*)  
482 *setulosus* from Cote d'Ivoire: implications for evolution of arenaviruses in Africa.  
483 *PLoS One* 2011, 6, e20893.

484 35. Mari Saez, A.; Cherif Haidara, M.; Camara, A.; Kourouma, F.; Sage, M.;  
485 Magassouba, N.; et al. Rodent control to fight Lassa fever: Evaluation and lessons  
486 learned from a 4-year study in Upper Guinea. PLoS Negl Trop Dis 2018, 12,  
487 e0006829.

488

489 Address for correspondence: Prof Miles W. Carroll & Dr Stephanie Longet, Nuffield  
490 Department of Medicine, Wellcome Centre for Human Genetics, University of Oxford,  
491 Oxford, OX3 7BN, United Kingdom. Emails and phone numbers:  
492 [miles.carroll@ndm.ox.ac.uk](mailto:miles.carroll@ndm.ox.ac.uk) (+447920232324) and  
493 [stephanie.longet@well.ox.ac.uk](mailto:stephanie.longet@well.ox.ac.uk) (+441865617892).

494

495