

1 **Psychosocial factors associated with mental health and**
2 **quality of life during the COVID-19 pandemic among low-**
3 **income urban dwellers in Peninsular Malaysia**
4 **Psychosocial factors for mental health among the low-**
5 **income community**

6 **Wong Min Fui** ^{1,2}, **Hazreen Abdul Majid**^{2,3}, **Rozmi Ismail**⁴, **Tin Tin Su**⁵, **Tan Maw Pin**⁶,
7 **Mas Ayu Said**^{7*}

8 ¹Training Management Division, Ministry of Health, 62675 Putrajaya, Malaysia

9 ² Centre for Population Health (CePH), Department of Social and Preventive Medicine, Faculty
10 of Medicine, University of Malaya, 50603 Kuala Lumpur, Malaysia.

11 ³ Department of Nutrition, Faculty of Public Health, Universitas Airlangga, 60115 Jawa Timur,
12 Indonesia.

13 ⁴ Psychology and Human Well-being Research Centre, Faculty of Social Sciences and
14 Humanities, University Kebangsaan, 43600 Bangi, Malaysia.

15 ⁵ South East Asia Community Observatory (SEACO) and Global Public Health, Jeffrey Cheah
16 School of Medicine & Health Sciences, Monash University, Bandar Sunway, 47500 Subang
17 Jaya, Malaysia.

18 ⁶ Department of Medicine, Faculty of Medicine, University of Malaya, 50603 Kuala Lumpur,
19 Malaysia.

20 ⁷ Centre for Epidemiology and Evidence-Based Practice, Department of Social and Preventive
21 Medicine, Faculty of Medicine, University of Malaya, 50603 Kuala Lumpur, Malaysia.

22 *Corresponding author

23 **NOTE: This preprint reports new research that has not been certified by peer review and should not be used to guide clinical practice.**
mas@ummc.edu.my

24 **Abstract**

25 **Background and aims**

26 The mental well-being among low-income urban populations is arguably challenged more than
27 any other population amid the COVID-19 pandemic. This study investigates factors associated
28 with depression and anxiety symptoms, and quality of life among Malaysia's multi-ethnic
29 urban lower-income communities.

30 **Methods**

31 This is a community-based house-to-house survey conducted from September to November
32 2020 at the Petaling district in Selangor, Malaysia. Five hundred and four households were
33 identified using random sampling, and heads of eligible households were recruited. Inclusion
34 criteria were age ≥ 18 years with monthly household income \leq RM6960 (estimated USD 1600)
35 without acute psychiatric illness. The PHQ-9, GAD-7 and EQ-5D were used for depression,
36 anxiety, and quality of life. Multivariable logistic regression was performed for the final
37 analysis.

38 **Results**

39 A total of 432 (85.7%) respondents with a mean age of 43.1 years completed the survey. Mild
40 to severe depression was detected in 29.6%, mild to severe anxiety in 14.7%, and problematic
41 quality of life in 27.8% of respondents. Factors associated with mild to severe depression were
42 younger age, chronic health conditions, past stressful events, lack of communication gadgets
43 and lack of assets or commercial property. While respiratory diseases, marital status, workplace
44 issues, financial constraints, absence of investments, substance use and lack of rental income
45 were associated with mild to severe anxiety. Not attributing poverty to structural issues, help-
46 seeking from professionals, and self-stigma were barriers, while resiliency facilitated good
47 psychological health. Problematic quality of life was associated with depression, older age,

48 unemployment, cash shortage, hypertension, diabetes, stressful life events and low health
49 literacy.

50 **Conclusions**

51 A higher proportion had reported mild to severe anxiety and depression symptoms in the
52 sampled urban poor population than previous pre-pandemic reports. The psychosocial
53 determinants should inform policy and direct future research within this underserved
54 population.

55 **Introduction**

56 Depression and anxiety remain two major diagnosable common mental disorders contributing
57 to disability and morbidity worldwide, partially attributable to lack of public health investment
58 in this area (1). The World Health Organisation reported 800,000 suicides cases globally in
59 2015, with 78% of suicides occurring in the lower to middle-income countries (LMIC) (2).
60 Almost half a million Malaysian have significant depressive symptoms that are particularly
61 prominent among individuals living within households within the bottom 40% (B40) income
62 bracket (3). The recent coronavirus disease (COVID-19) pandemic has brought mental health
63 issues to the forefront, with a reported increase in suicide cases from 609 cases in 2019 to 631
64 cases in 2020 during the pandemic period (4,5).

65 Over the past 50 years, the Malaysian government has invested in extreme poverty
66 eradication and economic growth by shared prosperity within its multi-ethnic population. The
67 rapid urbanisation observed from 1960 to 2010 (6) had, however, led to the unintended
68 consequences of the transformation of social structures resulting in pockets of urban poor in
69 the cities of Malaysia. This has led to escalating poverty in urban areas within Selangor, the
70 wealthiest state in Peninsular Malaysia (7), which threatens urban residents' mental well-being
71 (8). Studies from high-income countries (HIC) and low-middle-income countries (LMICs)
72 suggest that urban residents were more likely to develop neurotic conditions than rural residents
73 (9-11). In contrast, studies from China and Germany showed that rural residents were prone to
74 mental health issues (12,13). Local studies also revealed a consistently high prevalence of
75 depression (12.3% to 24.2%) and anxiety (18% to 36.3%) among the low-income urban
76 residents, with variations arising from on screening tools utilised and selected cut-off scores
77 (14-16).

78 Low socioeconomic status is a major social determinant of health (SDH) (17), which
79 profoundly affects the morbidity and mortality of the community (18). Education, ethnic group
80 or social class, income, and employment are typical indicators for socioeconomic status (19).
81 Community-based studies from LMIC have revealed the relationship between low
82 socioeconomic status (SES) and common mental disorders (20-23).

83 Recent literature revealed that low socioeconomic status was linked to lower health
84 literacy with higher stigma (24,25) and lack of mental health help-seeking (26). Additionally,
85 low-income individuals' perceptions of the structural issues they encountered may
86 subsequently influence their decision-making, thus influencing mental health (27). Since the
87 evidence for these psychosocial factors remains scarce, further exploration is needed to target
88 mental health promotion among low-income populations (26).

89 A study conducted during the COVID-19 pandemic revealed that those who showed
90 avoidance coping and lower religious coping had a higher risk of developing mild to moderate
91 depressive symptoms (28). A recent study from China showed that resilience scores were
92 inversely associated with mental health symptoms associated with lower among subjects with
93 mild COVID-19 cases (29). This has led to concerns that the COVID-19 pandemic may
94 adversely affect the mental health of populations in LMIC that lack the resources to address
95 the increase in mental health needs of their population.

96 In addition, the World Bank has estimated that between 71 to 100 million people are
97 being pushed into poverty due to the COVID-19 pandemic (30). Therefore, the current study
98 measured the prevalence of depression and anxiety symptoms and quality of life among the
99 urban low-income population in Malaysia during the COVID-19 and identified psychosocial
100 determinants of depression, anxiety, and quality of life within this population.

101 **Methods**

102 **Setting**

103 This was a community-based cross-sectional survey conducted from September 2021 until
104 November 2021 (corresponds to the recovery movement control order (RMCO) and start of
105 the Controlled Movement Control Order (CMCO)) (See Fig 1) at the Petaling district of the
106 state of Selangor in Malaysia. Proportions and effect sizes were obtained from similar studies
107 to estimate sample size (S1 Table). The sample size was estimated using Open Epi software
108 with a significance level of 0.05 and an alpha value of 0.2.

109 **Fig 1. Timeline of each phase of study and the corresponding movement control**

110 A simple random sampling was done based on the household list provided by the
111 research committee from the Statistics Department. All respondents from the selected
112 household who was a) aged 18 years and older with, (b) a household income of RM 6960 and
113 below, and c) without any acute psychiatric illness were included in this study. Non-
114 Malaysians were excluded from the study. This study received ethical approval from the
115 University of Malaya Research Ethics Committee (UMREC Non-Medical ref:
116 UM.TNC2/UMREC – 811). Written consent was obtained from each eligible respondent prior
117 to the enrolment.

118 **Data Collection**

119 Since this is a face-to-face data collection, each enumerator was briefed about the University
120 Malaya COVID-19 Fieldwork Safety Protocol. Trained enumerators administered validated
121 questionnaires during the house-to-house data collection(See Fig 2) .

122 **Fig 2. The flow chart of the data collection**

123 The respondents completed multiple standardised instruments in the Malay language with
124 assistance from the research team. The survey components comprised the socio-demographic

125 domain which captured the respondents' information such as age, gender, ethnicity, education
126 level, employment status during the COVID-19 pandemic, monthly household income during
127 COVID-19 pandemic, marital status and household size.

128 The health domain components comprised self-reported weight and height, history of
129 chronic illnesses, stressful life events, substance used, the 6-item health literacy scale (HL-6)
130 (Duong et al., 2017), 9-item Patient's Health Questionnaire (PHQ-9) (31), 7-item Generalised
131 Anxiety Disorders (GAD-7) (32) and the EQ-5D-5L health-related quality of life (33). All the
132 study tools were piloted before the actual study, and all of them showed good internal
133 consistency (refer to Table S2).

134 The presence of chronic diseases was self-reported by the participants based on the
135 diagnoses from medical professionals and was defined as conditions that lasted for one year or
136 more that require ongoing medical attention or limiting daily activities, or both. The listed
137 medical conditions included hypertension, diabetes mellitus, heart diseases, stroke, mental
138 illness, and cancer. Substance use was recorded with a checklist of the top 10 most common
139 substances, including tobacco, alcohol, cannabis, cocaine, amphetamine-type stimulant,
140 inhalant, sleeping pills, hallucinogens, opioids and other substances. The 13-item Malay
141 version of the stressful life events checklist was also utilised (34).

142 EQ-5D-5L is a standardised self-reported perceived health-related quality of life (QoL)
143 which is rated through a descriptive system (EQ-5D) and a visual analogue scale (EQ-VAS),
144 which captures perceptions on health status in the mobility, selfcare, usual activities, pain or
145 discomfort, and anxiety or depression domain. Each dimension is rated based on five response
146 levels from no problems to unable to/extreme problems. Each health state is assigned a
147 summary index score derived from a country-specific value set (35). Health state index scores
148 ranged from less than 0 to 1 (the value of full health), with higher scores indicating higher
149 health utility. The visual analogue scale (EQ-VAS) records the respondent's overall current

150 health on a vertical visual analogue scale on a scale of 0 to 100. The Cronbach's alpha of the
151 EQ-5D was 0.85 (36).

152 The Patient Health Questionnaire measured depressive symptoms over the past two
153 weeks. The PHQ-9 consists of 9 items scored across a four-point scale with a maximum score
154 of 27. It is then classified further according to minimal (0-4), mild (5-9), moderate (10-14),
155 severe (15-19), and very severe (20 or greater). Both English and Malay versions of the
156 questionnaire has good internal reliability with a Cronbach's α of 0.70 (31, 37). The total
157 scoring methods were adopted (38).

158 Generalised Anxiety Scale also measures anxiety symptoms for the past two weeks.
159 This was a 7-item instrument rated on a four-point scale. These cut-off values of minimal (0-
160 4), mild (5-9), moderate (10 -15) and severe (16-21) (39) were utilised. The Malay and English
161 versions had good internal reliability with Cronbach's α ranging from 0.74 to 0.92 (32, 40).

162 Religiosity was determined with the Santa Clara Strength of Religious Faith
163 Questionnaire 5 items (SCSRFQ-5) brief version, which was self-reported and rated on a 4-
164 point Likert scale with a maximal score of 20 and a higher score indicating greater strength
165 religiosity. The cut-off point for high (≥ 17) or low (<17) religiosity were based on the sample
166 median (41). This tool was validated in the pilot study with good internal reliability of
167 Cronbach's α of 0.79.

168 Resilience Scale 14 items (RS-14) was derived from the 25 items scale developed by
169 Wagnild et al. (42). Each item was rated with a 7-point scale with a maximum total score of
170 98. The Malay version of RS-14 has an excellent internal consistency of 0.86 (43).

171 Mental Help-Seeking Attitudes Scale (MHSAS) is a 9-item semantic scale with a higher
172 score indicating a more positive attitude towards seeking help (44). The Malay MHSAS has a
173 Cronbach's α of 0.892 (45).

174 Self-Stigma of Seeking Help (SSOSH) scale was developed by Vogel et al. and has 10
175 items rated on a 5-point scale. The Malay SSOSH has been validated among the low-income
176 group in Malaysia with an acceptable internal consistency of Cronbach's alpha = 0.667 (26).

177 Poverty Attribution was used to measure the perception of low-income respondents on
178 the cause of poverty. This 21-item new tool was developed by Rozmi et al. (46) and comprised
179 structural support, socioeconomic support, individualistic and fatalistic domains. Each item is
180 rated on a 5-point scale with higher scores indicating higher levels of agreement on the cause
181 of impoverished conditions. The Malay language version showed acceptable internal validity
182 of Cronbach alpha 0.61 to 0.87 among the four main domains.

183 Health Literacy Survey was a valid and reliable (Cronbach's alpha=0.85) tool in six
184 Asian countries (47). Six items were extracted from the 12-item short-form version, with each
185 item rated on a 4-point Likert scale. This tool was validated in the pilot study with good internal
186 consistency (Cronbach's alpha=0.898) and test-retest of inter-item covariance of 0.469 with
187 excellent Pearson correlation of $r(98) = .839$, $p < .0001$ were obtained. The total scores were
188 computed and utilised for data analysis.

189 **Statistical Analysis**

190 **Data Analysis**

191 All statistical analyses were performed using the IBM SPSS Statistics for Windows, version
192 25.0 (IBM Corp LP, Armonk, NY, USA). Total scores of ≥ 5 for PHQ-9 and GAD-7 was
193 applied to determine the presence of symptomatic depression (depressed =1, not-depressed =0)
194 and positive symptomatic anxiety (anxious=1, not-anxious =0), respectively. The students'
195 independent sample T-test (normally distributed variables) and Mann-Whitney U-test (non-
196 normally distributed variables) were conducted for univariate analysis. The Pearson's Chi-
197 square or Fisher's Exact test was used to determine the strength of association between

198 categorical explanatory variables and the outcomes variables. Multivariable logistic regression
199 was performed to elicit significant final independent variables associated with PHQ-9 , GAD-
200 7 and EQ-5D. Hosmer-Lemeshow model development strategy was applied in the final analysis
201 with variables selection criterion of p-values of less than 0.25 with backwards purposive
202 variables exclusion of p-value more than 0.05 guided by the likelihood-ratio test (48). Effect
203 modification first-order main effects of explanatory variables were checked guided by the
204 likelihood-ratio test. The finalised model was assessed for violation of assumptions of linearity
205 of explanatory variables, log odds, multicollinearity and model fitness. The model's sensitivity
206 was also assessed using the area under receiving operating characteristics (AUROC) curve.
207 Statistical significance was set at a p-value less than 0.05.

208 **Results**

209 **Participant Characteristics**

210 A total of 504 eligible participants, 432 (82.7%) participants completed the survey. Table 1
211 summarises participants' characteristics. Respondents had a mean age of 43.1 (SD 13.2) years.
212 The unemployment rate doubled (33.2%) during the pandemic while income reduced by 13.5
213 %, and 41% lived below the poverty line.

214 **Table 1. Socio-demographic profiles of Low-income respondents from the Petaling**
215 **district (n=432)**

Variables	n	%
Gender		
Male	278	64.5
Female	153	35.5
Age group (years old)		
Below 30	81	19.8
30-40	114	27.8
41-50	104	25.4
More than 50	111	27.0
Ethnicity		
Malay	323	75.1
Chinese	58	13.5
Indian	31	7.2

Others	18	4.2
Marital status		
Single	75	17.5
Married	321	74.7
Widowed	34	7.8
Education level categorical		
No Formal & Primary School	29	6.8
Secondary Schools	206	(48.4)
More than Secondary Schools	191	(44.8)
Employment status (before Covid-19)		
No	69	16.2
Yes	357	83.8
Employment status (during Covid-19)		
Yes	276	66.8
No	137	33.2
Household income (during Covid-19)		
Below MYR 1700	136	31.5
MYR 1700 to 2700	91	21.1
MYR 2701 to 3700	77	17.8
MYR 3701 to 4700	55	12.7
MYR 4700-5700	32	7.4
More than MYR 5701	41	9.5
Household size (person)		
Less than 4	191	47.8
More than 4	234	55.2
House-ownership		
Owners	179	41.7
Shelter	13	3.0
Renting	219	51.1
Inherited	18	4.2
Asset		
House	231	53.8
Vehicle	350	81.8
Land	42	9.8
Orchard	23	5.4
Cash	148	34.5
Rental house	55	12.9
Jewellery	128	29.9
Shophouse	6	1.4
Investment	49	11.4
Others	4	0.9
Communication tools (own a mobile or smartphone)		
Yes	340	81.9
No	75	18.1
Own at least a form of communication tools (TV or radio and internet or laptop and smartphone/mobile phone)		
Yes	405	97.59
No	10	2.41

217 Approximately 133 (31.2%) respondents had problematic literacy levels, and 29 (6.8%) had an
218 inadequate level of health literacy. The professional help-seeking median score was high at 6.0
219 (IQR 2), and the mean self-stigma was neutral at 3.0 (SD 0.6). Poverty attribution, structural
220 and socioeconomic domains scores were 3.6 (SD 0.8) and 3.8 (SD 0.9), respectively. Low
221 resiliency was found in 133 (31%) participants. 182 (42%) scored 17 and below for religiosity.
222 Of the total respondents, 432 (30.4%) had a self-reported history of non-communicable
223 diseases with hypertension in 78 (18.2%), diabetes 38 (8.9%) and respiratory disease (COPD
224 or Asthma) 20 (4.7%). 172 (40.7 %) were overweight (body mass index (BMI) >23.0- 27.4
225 kg/m²) and 29.6 % obese (BMI ≥27.5kg/m²). In 130 (30.2%) male respondents, substance use
226 was present, with tobacco, alcohol, and sleeping pills being the commonest used substances.
227 Approximately 209 (48.5%) had a history of stressful life events, including losing loved ones,
228 followed by working environment issues and job loss.
229 Mild to severe depression symptoms were reported by 127 (29.6 %), 30 (7%) (n =30) of whom
230 had moderate to severe depressive symptoms. Mild to severe anxiety symptoms were present
231 in 63 (14.6%), with 19 (4.4%) reporting moderate to severe depressive symptoms. For the
232 details of the descriptive findings, refer to Tables S3 and S4.

233 **Multivariable Analyses**

234 Variables positively associated with mild to severe symptoms of depression were those aged
235 less than 30 years OR 5.11 (95%CI 2.04, 12.83), self-reported hypertension, having other
236 chronic illnesses, presence of past stressful life events (physical assault, long term illness,
237 family issues and workplace issues). Protective factors against the development of mild to
238 severe depressive symptoms were those who owned one or more communication tools
239 (Television or radio and internet or laptop and smartphone/mobile), absence of assets such as
240 investment shares, shop-houses, attributing structural issues to poverty, increase in resilience
241 scores and those who finds professional help is beneficial. Factors associated with anxiety

242 symptoms were respiratory illness (COPD or Asthma), stressful life events (marital issues,
243 financial issues, workplace issues), and sleeping pills. Perceived structural issues to poverty,
244 less self-stigma, and higher resilience scores were associated with fewer anxiety symptoms
245 (Table 2).

Table 2: Simple and multivariable logistic regression on factors associated with Depression (n=385) and Anxiety Symptoms(n=398) (cut-off at 5)

Factors	Depression (PHQ-9)		Anxiety (GAD-7)	
	Crude OR (95% CI)	Adjusted OR (95% CI)	Crude OR (95% CI)	Adjusted OR (95% CI)
Age				
Below 30	Reference	Reference	Reference	Reference
30-40	0.45 (0.24, 0.83)*	0.52 (0.24, 1.12)	0.68 (0.32, 1.45)	0.78 (0.31, 1.92)
41-50	0.46 (0.24, 0.88)*	0.47 (0.21, 1.09)	0.51 (0.22, 1.17)	0.68 (0.25, 1.88)
More than 50	0.35 (0.18, 0.67)*	0.20 (0.08, 0.49)*	0.47 (0.20, 1.07)	0.41(0.15, 1.12)
Asset-Shop lot				
Yes	Reference	Reference		
No	0.08 (0.01, 0.70)*	0.08 (0.07, 1.00)		
Asset-Investment				
Yes	Reference	Reference		
No	0.52 (0.28, 0.95)*	0.37 (0.17, 0.80)*		
Asset-Rental house				
Yes			Reference	Reference
No			0.65 (0.32, 1.34)	0.44 (0.18, 1.06)
Hypertension				
No	Reference	Reference		
Yes	1.57 (0.94, 2.63)	2.25 (1.01, 5.00)*		
Other diseases				
No	Reference	Reference		
Yes	7.29 (2.78, 19.10)**	4.06 (1.26, 13.06)*		
Asthma				
No			Reference	Reference
Yes			2.12 (0.74, 6.07)	4.44 (1.18, 16.67)*
Sleep pill usage				
No			Reference	Reference
Yes			10.46 (2.43, 44.95)*	11.89 (1.26, 112.16)*
Physical or sexual assault				
No	Reference	Reference		
Yes	5.68 (2.38, 13.54)**	4.77 (1.56, 14.57)*		
Prolonged or serious illness				

No	Reference	Reference		
Yes	5.24 (2.45, 11.236)**	4.892 (1.834, 13.053)*		
Family Issues				
No	Reference	Reference		
Yes	6.87 (2.94, 16.06)**	3.74 (1.26, 11.14)*		
Marital Problem				
No			Reference	Reference
Yes			8.40 (3.45, 20.44)**	4.73 (1.52, 14.70)*
Financial issues				
No			Reference	Reference
Yes			8.45 (3.70, 19.32)**	4.67 (1.46, 14.93)*
Workplace Issue				
No	Reference	Reference	Reference	Reference
Yes	3.28 (1.78, 6.04)**	3.48 (1.58, 7.67)*	5.03 (2.61, 9.71)**	3.533 (1.53, 8.17)*
Owing Communication Gadget 1 or 2				
No	Reference	Reference		
Yes	0.27(0.07, 0.97)*	0.06 (0.01, 0.38)*		
Poverty attribute-Structural	0.65 (0.51, 0.83)**	0.66 (0.48, 0.91)*	0.78 (0.58, 1.05)	0.67 (0.45, 0.99)*
MHSAS (Total)	0.96 (0.94, 0.98)**	0.96 (0.94, 0.99)*	0.98 (0.95, 1.00)	0.99 (0.97, 1.03)
SSOSH (Total)			1.12 (1.06, 1.19)**	1.09 (1.01, 1.17)*
Resilience (Total)	0.96 (0.94, 0.97)**	0.96 (0.94, 0.98)**	0.96 (0.94, 0.98)**	0.97 (0.95, 0.998)*

OR = Odds ratio; CI = Confidence Interval. ** p = < 0.001 * p=<0.05

PHQ-9: Nagelkerke's R square = 0.372; Hosmer and Lemeshow Test = 0.382; Area under the curve = 0.837 p = < 0.001

GAD-7: Nagelkerke's R square = 0.307; Hosmer-Lemeshow goodness of fit test = 0.888., Area under the curve = 0.799 (95% CI: 0.737, 0.861, p = < 0.001)

Quality of Life (QoL) was problematic in 119 (27.8%) respondents. Mild to severe depressive symptoms were associated with increased odds of problematic QoL. Age, female sex, unemployment, hypertension, diabetes, stressful life events of severe injury were associated with poorer QoL. Higher literacy scores were protective against poorer QoL (Table 3). Refer to Table S5 A-I for the details of univariable analysis and Table J-L for the multivariable variable selection process.

Table 3: Simple and multivariable logistic regression on factors associated with EQ-5D (n=385)

Factors	Crude OR (95% CI)	Adjusted OR (95% CI)
Gender		
Male	Reference	Reference
Female	1.61 (1.05, 2.49)*	2.34(1.35, 4.04)*
Age group (year-old)		
Below 30	Reference	Reference
30-40	1.09 (0.51,2.34)	1.21 (0.49, 2.99)
41-50	1.53 (0.71, 3.28)	1.61(0.63, 4.10)
More than 50	3.24 (1.56, 6.74)*	3.06 (1.17, 8.03)*
Asset-Cash		
Yes	Reference	Reference
No	1.61(1.01, 2.56)*	1.88 (1.04, 3.39)*
Work during outbreak		
Yes (R)	Reference	Reference
No	2.33(1.49, 3.64)**	1.34 (0.76, 2.38)
Hypertension		
No	Reference	Reference
Yes	4.18 (2.49, 6.99)**	2.56 (1.22, 5.26)*
Diabetes		
No	Reference	Reference
Yes	5.98 (2.93, 12.22)**	3.07 (1.22, 7.71)*
Severe injury due to accident		
No	Reference	Reference
Yes	2.88 (1.41, 5.86)*	3.59 (1.37, 9.42)*
Jobless		
No	Reference	Reference
Yes	2.47 (1.35, 4.59)*	2.54 (1.20, 5.37)*
Depression-symptomatic		
< 5 (R)	Reference	Reference
≥ 5	3.31 (2.11, 5.18)**	2.79 (1.57, 4.49)**
Health literacy index		
	0.96 (0.94 , 0.98)**	0.96 (0.94, 0.99)*

OR = Odds ratio; CI = Confidence Interval. ** p = < 0.001 * p=<0.05

Nagelkerke's R square = 0.345; Hosmer and Lemeshow Test = 0.857; Area under the curve = 0.813 (95% CI: 0.765, 0.861), p = < 0.001

246 **Discussions**

247 Comparatively, depression and anxiety levels were higher than those previously reported in the
248 National Health and Morbidity Survey (NHMS) 2012 -2019(3,49). Compared to other local
249 studies, anxiety levels were lower than the pandemic levels (28,50-51). While mild to moderate
250 anxiety levels were higher than those previously reported in international studies (52-54), it
251 was also lower than those conducted in other countries during the pandemic (55, 56). Lower-
252 income groups with higher financial strain respondents are more likely to experience mild to
253 severe depression (28). However, the lower anxiety levels could be attributed to differences in
254 assessment tools (28,50-51). As the study was conducted towards the later stages of the
255 pandemic as opposed to previous studies, (57,58) anxiety levels could have been higher initially
256 due to difficulties adapting to containment measures and fear of infection and death (59).
257 Depression may be more prominent at the later stages when the future is uncertain due to job
258 losses, pay cuts and poor social support (60,61).

259 To date, only a few studies have examined the relationship between mental health issues
260 and quality of life for low-income groups that allowed for comparison. The majority were those
261 studies targeted at the general population with specific diseases (62). Nevertheless, the
262 comparisons were made based on studies that involved the general population with a similar
263 methodology. The overall prevalence for poorer quality of life was 27.8%, which is lower than
264 the majority of the pre-pandemic studies from other countries (63-67) and remained low even
265 after accounting for socio-demographic and chronic illness characteristics (64,68). Out of this
266 figure, pain/discomfort and anxiety/depression domains had the most significant number of
267 problematic QoL respondents. Local evidence remains fragmented and focuses primarily on
268 the diseased population but not on the general population. The possible explanation for the
269 lower figure is the higher proportion of Malay and male participants in this study sample. In a
270 separate cross-tabulation analysis done in the present study, anxiety/depression was the only

271 domain that showed significant difference across ethnic groups and gender, with Malay and
272 males inclining to report “no problem” to their mental health well-being. Another local
273 validation study observed a similar trend (69). Therefore, the better-perceived health-related
274 quality of life among B40 for the current study is worth further exploration in the future study
275 to rule out the possible information bias due to cultural influence on the lack of disclosure of
276 mental health issues.

277 A positive association between higher scores of depression and poorer quality of life
278 were established in this study. This results were similar with studies conducted in Malaysia,
279 China and Slovenia involving urban community samples (28, 70- 71). Leong et al. from the
280 northwest coast of Peninsular Malaysia has conducted a similar study with different tools, and
281 results varied for depression and anxiety among the domains in WHOQoL-BREF (50). Another
282 large scale mental health study National Epidemiologic Survey on Alcohol and Related
283 Conditions, has shown (NESARC) (72) reported that anxiety does not confer a significant
284 association with quality of life. Variation in methodology in terms of the measurement tools
285 and location of the studies may explain the inconsistency of findings.

286 The escalation of financial burdens due to pay cuts and unemployment has led to marital
287 and family issues during the pandemic, increasing depression and anxiety symptoms. This was
288 supported by a Malaysian study done in urban settings that revealed severe problems at work,
289 unhappy relationships with children, spouse and family, and severe financial constraints are
290 stressful life events for depression (73). The same investigator also measured anxiety
291 symptoms and found that unhappy relationships with family and severe problems at work
292 predict the outcomes (74). The odds ratio for stressful life events were two times higher than
293 those pre-pandemic findings reported by Kader et al. (73). No doubt, movement restriction
294 increases contact time among the family members, but it can aggravate the pre-existing family
295 conflict and causes stress to the vulnerable population (75). In line with the current study’s

296 findings, physical or sexual assault showed a positive relationship with depression. Woman's
297 Aid Organisation (WAO) and Women, Family and Community Development Ministry
298 reported increased usage of their public hotlines during the pandemic, and domestic violence
299 was the main reason for calling (76).

300 Additionally, Malaysia's divorce rate also rises from 60,088 cases in 2017 to 90,766
301 cases in 2020, based on the syariah court data (77). The majority of the marital issues involved
302 cases from the bottom 40 % of the low-income group who faced the challenge of job loss and
303 financial crisis (78). The economic difficulty is closely related to depression among the parents
304 (79). Therefore, it is pertinent to look out for stressful life events like a history of child abuse
305 or intimate partner physical abuse as a critical risk factor for mental health issues among the
306 low-income group.

307 Younger respondents (less than 30 years old) have a higher risk of developing
308 depression symptoms than older respondents during the pandemic. The social, emotional and
309 cognitive maturation was observed by neurodevelopmental scientists even right before the
310 adolescent age extending to the mid-20s to the 30s of age (80,81); this has marked the
311 vulnerability of the brain towards environmental changes and insults during this transition
312 period towards young adulthood, thus any stressful life event will tip off mental health issues.
313 Three studies were conducted in the local community, and the general population at the urban
314 settings supported the relationship between the younger age group of respondents and a higher
315 likelihood of mental health issues (14-15,28). Likewise, similar findings are notable among
316 studies in other countries (82-84).

317 Gender did not reveal any positive findings for mental health status in this study. These
318 were unexpected findings as females were the most replicable risk factors in the past studies
319 among the general population (85, 86), low-income groups (21, 87), and during the pandemic
320 (82, 87, 88) (A. Ahmad, Rahman, & Agarwal, 2020; Huang & Zhao, 2020). Perhaps the

321 COVID-19 pandemic may have put the low-income family under serious financial strain,
322 leading to emotional turmoil for both genders. On the other hand, the older age group (more
323 than 50 years) and females had a poorer quality of life. The plausible explanation is the higher
324 probability of getting chronic illness at an older age, and chronic illness tend to be higher
325 among females than males based on the NHMS 2019 data (3).

326 Non-communicable diseases, including hypertension and diabetes, were reported by
327 one in three persons within the low-income population which approximated to the prevalence
328 of known hypertension of 15.5% and diabetes of 9.2% from the urban population reported in
329 the NHMS 2019 (3). In contrast, a meta-analysis reported by Uphoff, Newbould (89) showed
330 a six to seven times higher pooled prevalence than this study. The higher rate observed in the
331 latter study was attributed to hospital-based samples and underdeveloped mental health
332 services for secondary prevention in lower-income countries.

333 Respondents with a known history of hypertension, other diseases and perceived
334 chronic illness as stressful life events likely to report higher depressive symptoms. Asthma was
335 associated with a higher risk for anxiety symptoms. However, out of the self-reported illness,
336 only hypertension and diabetes were associated with poorer QoL. Studies showed that physical
337 illnesses like cardiovascular-related diseases had proven to predict common mental health
338 issues (90) and affect the quality of life among the low-income population. There was
339 convincing evidence from a systematic review with meta-analyses done by Kohler et al. (91).
340 that both obesity and metabolic syndrome predict the occurrence of depression studies for
341 anxiety disorders involved the general population have revealed that pre-morbid chronic
342 conditions predict psychiatric illness (aOR 3.66 95% CI:1.62, 8.30) (92,93). The plausible
343 explanation for chronic and mental illnesses was the disruption of their quality of life due to
344 the complication of the chronic illness. For instance, B40 respondents who developed diabetes

345 nephropathy and retinopathy may face significant stress due to the impairment apart from their
346 medical financial burden.

347 Respondents reported a high proportion of low health literacy, with positive findings
348 and poorer life quality. This evidence supported the high rate of chronic illness among the low-
349 income group revealed by a series of publications from PARTNER's (94-97). However,
350 collective evidence from the meta-analysis showed heterogeneous results for the association
351 between health literacy and quality of life among developed and developing countries (98).
352 The authors attribute the outcomes to variation of the health literacy tool among the studies;
353 therefore, more studies are needed to robust evidence to support the relationship. Nevertheless,
354 this study highlights the implication of low literacy that further intervention is needed to
355 improve their knowledge in selfcare.

356 **Poverty Attribution**

357 Poverty is not merely a result of mental disease, but it also frequently precedes mental illnesses
358 like depression and anxiety, making it a significant risk factor for mental illness and other
359 negative consequences (99). Bullock and Limbert showed that poor respondents are more likely
360 to endorse structural or external attribution for poverty (100, 101). The mean score (4.0) of
361 poverty attribution to the B40 community agrees with the structural barriers, and respondents
362 who refute poverty as a structural issue showed a reciprocal association for depressive and
363 anxiety symptoms. This is supported by a small scale observational study which indicates that
364 individuals who attribute their poverty to structural or government blame are more likely to
365 experience depression (27). Rozmi et al. postulated that respondents who do not blame the
366 government are more self-sufficient and thus experience better financial well-being (102).
367 Therefore, it is crucial to explore individuals' perceptions of their low-income status to
368 understand their motivation to get out of poverty (27). Short term stipend from the government

369 such as Bantuan Prihatin Rakyat (BPR) in the form of fast cash may ease their financial stress
370 in the short term, but life skill training is needed to get them out of the poverty cycle.

371 **Stigma and Professional Help-Seeking**

372 Even though the majority of the respondents have a neutral score for self-stigma, the analysis
373 showed respondents who have higher self-stigma were likely to have anxiety symptoms but
374 not for depression. In contrast, respondents with lower mental health-seeking attitudes predict
375 higher depressive symptoms, not anxiety symptoms.

376 Based on the body of evidence, stigma is one of the well-established determinants for the
377 help-seeking barrier essential for people from low and high-income countries. Lacking a help-
378 seeking attitude prevents them from getting earlier treatment for severe mental health issues.
379 The negative evaluations on professionals possibly derived from negative past experiences and
380 mistrust of the mental health professionals (103). Data from the Institute's mental health
381 services policy analysis (104) showed an overall limited mental health workforce in this
382 country. Currently, no counsellors are available to handle mild to moderate mental health cases
383 at the primary care clinic. The existing primary healthcare providers who were not trained in
384 mental health were obligated to manage such cases which were first diagnosed with mental
385 health issues. This may create a spillover on public trust in professional help-seeking whenever
386 a mismanaged case occurs.

387 **Resilience**

388 Approximately one-third of respondents have low resiliency and higher resilience scores
389 moderate depressive and anxiety symptoms. Substantial empirical studies have supported the
390 inverse resilience scores concerning depression and anxiety (105). A 4 years longitudinal study
391 involving a sample of 314 college students in China supported a reciprocal relationship
392 between resilience and mental ill-being (106). Respondents from this study were vulnerable

393 given their low-income status, and almost half of them reported a history of stressful life events.
394 Building resiliency through health promotion is crucial to shield them from the impact of ill
395 mental well-being due to adversity at the verge of the current pandemic financial crisis.

396 This is one of the first studies that comprehensively explored the various psychological
397 risk factors during the Covid19 pandemic among the low-income group in LMIC. This is a
398 face-to-face study, thus having the benefits of capturing the responses for the non-technology
399 savvy subjects compared to many other online studies done during the pandemic. It also
400 improves rapport and eases the process of obtaining consent. As this was a cross-sectional
401 study of the temporal causal relationships between the independent variables to depression,
402 anxiety and quality of life could not be assigned, and the majority of the sample were heads of
403 household, male and older age group, the findings may not be generalisable to all lower-income
404 populations.

405 **Conclusions**

406 Mental health problems compromise the quality of life of the low-income group. The
407 prevalence of depression and anxiety symptoms were higher than studies prior to the pandemic.
408 Apart from the socio-demographic, chronic illnesses and stressful life events factors, this study
409 unveiled the positive psychological factors such as resiliency, stigma and help-seeking for
410 mental health. These outputs provide suitable resources for the subsequent psychosocial
411 intervention development for low-income communities. This is much needed to improve
412 mental health status, empower the low-income group population to thrive during this
413 challenging pandemic period and beyond, and shape a healthier human capital for sustainable
414 development.

415 **Supporting Information**

416 **S1 Table. Sample Size According to Study objectives**

417 (DOCX)

418 **S2 Table. Reliability of the study tools**

419 (DOCX)

420 **S3 Table. Psychosocial risk factors of the B40 respondents from the Petaling district**

421 (DOCX)

422 **S4 Table. Health-related profiles of B40 respondents from the Petaling district**

423 (DOCX)

424 **S5 Table. Univariable analysis results tables and multivariable variable selection
425 process**

426 (DOCX)

427 **Acknowledgement**

428 We are grateful to Ng Yit Han and Nithiah Thangiah for their contribution in statistical
429 analysis.

430 **Author Contributions**

431 **Conceptualisation:** Wong Min Fui, Mas Ayu Said, Hazreen Abdul Majid, Tin Tin Su, Tan
432 Maw Pin, Rozmi Ismail

433 **Data Curation:** Wong Min Fui , Mas Ayu Said, Hazreen Abdul Majid

434 **Methodology:** Wong Min Fui, Mas Ayu Said, Hazreen Abdul Majid, Rozmi Ismail

435 **Writing:** Wong Min Fui, Mas Ayu Said, Hazreen Abdul Majid, Rozmi Ismail

436 **Reviewing and Editing:** Wong Min Fui, Mas Ayu Said, Hazreen Abdul Majid, Rozmi
437 Ismail

438 Tin Tin Su, Tan Maw Pin,

439 **Funding Acquisition:** Mas Ayu Said, Hazreen Abdul Majid, Tan Maw Pin, Tin Tin Su

440 **References**

- 441 1. Lépine JP, Briley M. The increasing burden of depression. *Neuropsychiatr Dis Treat*. 2011
442 May; 7(Suppl 1): 3-7. doi: 10.2147/NDT.S19617 PMID: 21750622
- 443 2. World Health Organization. Preventing suicide: a global imperative: World Health
444 Organisation, 2014.
- 445 3. Institute for Public Health (IPH), National Institutes of Health, Ministry of Health
446 Malaysia. National Health and Morbidity Survey (NHMS) 2019: Vol. I: NCDs–Non-
447 Communicable Diseases: Risk Factors and Other Health Problems.
- 448 4. Free Malaysia Today (FMT) . Over 2,400 suicides since 2018, 80% were men, says PM.
449 2021. 2021 September 16 [Cited 2021 December 20] Available from:
450 [https://www.freemalaysiatoday.com/category/nation/2021/09/16/over-2400-suicides-](https://www.freemalaysiatoday.com/category/nation/2021/09/16/over-2400-suicides-since-2018-80-were-men-says-pm/)
451 [since-2018-80-were-men-says-pm/](https://www.freemalaysiatoday.com/category/nation/2021/09/16/over-2400-suicides-since-2018-80-were-men-says-pm/)
- 452 5. The Star. Selangor tops list of suicide cases between Jan-May this year, says Bukit Aman.
453 2021 July 1 [Cited 2021 December 20] Available from:
454 [https://www.thestar.com.my/news/nation/2021/07/01/selangor-tops-list-of-suicide-cases-](https://www.thestar.com.my/news/nation/2021/07/01/selangor-tops-list-of-suicide-cases-between-jan-may-this-year-says-bukit-aman)
455 [between-jan-may-this-year-says-bukit-aman](https://www.thestar.com.my/news/nation/2021/07/01/selangor-tops-list-of-suicide-cases-between-jan-may-this-year-says-bukit-aman)
- 456 6. Thinagaran A, Dass LM, Sabri MF. The Financial Status and Factors Affecting Personal
457 Well-Being Among Urban Poor in Kuala Lumpur. *Malaysian Journal of Social Sciences*
458 *and Humanities (MJSSH)*. 2017 Mar 24;2(1):21-39. doi:
459 <https://doi.org/10.47405/mjssh.v2i1.34>.
- 460 7. Department Of Statistics Malaysia (DOSM). Household Income and Basic Amenities
461 Survey. Report by State and Administrative District: Selangor [Internet]. Malaysia; 2019

- 462 [cited 2021 December 20] Available from:
463 <https://www.dosm.gov.my/v1/index.php?r=column/ctHEMEByCat&cat>
- 464 8. Gruebner O, Rapp MA, Adli M, Kluge U, Galea S, Heinz A: Cities and mental health.
465 Dtsch Arztebl Int. 2017; 114(8): 121–7. doi: 10.3238/arztebl.2017.0121 PMID: 28302261
- 466 9. Prina AM, Ferri CP, Guerra M, Brayne C, Prince M. Prevalence of anxiety and its
467 correlates among older adults in Latin America, India and China: cross-cultural study. Br
468 J Psychiatry. 2011 Dec;199(6):485-91. doi: 10.1192/bjp.bp.110.083915 PMID: 22016438
- 469 10. Sharifi V, Amin-Esmaeili M, Hajebi A, Motevalian A, Radgoodarzi R, Hefazi M, et al.
470 Twelve-month prevalence and correlates of psychiatric disorders in Iran: the Iranian
471 Mental Health Survey, 2011. Arch Iran Med. 2015 Feb 1;18(2): 76–84. PMID: 25644794
- 472 11. Gruebner O, Khan MM, Lautenbach S, Müller D, Krämer A, Lakes T, Hostert P. Mental
473 health in the slums of Dhaka-a geoepidemiological study. BMC Public Health. 2012
474 Dec;12(1):177. <https://doi.org/10.1186/1471-2458-12-177>
- 475 12. Jacobi F, Höfler M, Siegert J, Mack S, Gerschler A, Scholl L, et al. Twelve-month
476 prevalence, comorbidity and correlates of mental disorders in Germany: the Mental Health
477 Module of the German Health Interview and Examination Survey for Adults
478 (DEGS1-MH). Int J Methods Psychiatr Res. 2014 Sep;23(3):304-19. doi:
479 10.1002/mpr.1439. Epub 2014 Apr 11. PMID: 24729411
- 480 13. Phillips MR, Zhang J, Shi Q, Song Z, Ding Z, Pang S, et al. Prevalence, treatment, and
481 associated disability of mental disorders in four provinces in China during 2001-05: an
482 epidemiological survey. Lancet (London, England). 2009;373(9680):2041-53.
- 483 14. Lugova H, Andoy-Galvan JA, Patil SS, Wong YH, Baloch GM, Suleiman A, Nordin R,
484 Chinna K. Prevalence and associated factors of the severity of depression, anxiety and
485 stress among low-income community-dwelling adults in Kuala Lumpur, Malaysia.

- 486 Community Ment. Health J. 2021 Nov;57(8):1489-1498. doi: 10.1007/s10597-020-00765-
487 7. PMID: 33417170
- 488 15. Tan KL, Yadav H. Depression among the urban poor in Peninsular Malaysia: A
489 community based cross-sectional study. J Health Psychol. 2013 Jan;18(1):121-7. doi:
490 10.1177/1359105311433908. PMID: 22322990
- 491 16. Abd Rashid R, Kanagasundram S, Danaee M, Abdul Majid H, Sulaiman AH, Ahmad
492 Zahari MM, et al. The prevalence of smoking, determinants and chance of psychological
493 problems among smokers in an urban community housing project in Malaysia. Int. J.
494 Environ. 2019 Jan;16(10):1762. doi: 10.3390/ijerph16101762.PMID: 31109033
- 495 17. Wilkinson RG, Marmot M, editors. Social determinants of health: the solid facts. World
496 Health Organization; 2003.
- 497 18. Lahana E, Pappa E, Niakas D. The impact of ethnicity, place of residence and
498 socioeconomic status on health-related quality of life: results from a Greek health survey.
499 Int J Public Health. 2010 Oct;55(5):391-400. doi: 10.1007/s00038-010-0171-2. PMID:
500 20652355
- 501 19. Darin-Mattsson A, Fors S, Kåreholt I. Different indicators of socioeconomic status and
502 their relative importance as determinants of health in old age. Int J Equity Health. 2017
503 Sep 26;16(1):173. doi: 10.1186/s12939-017-0670-3. PMID: 28950875
- 504 20. Lund C, Breen A, Flisher AJ, Kakuma R, Corrigall J, Joska JA, Swartz L, Patel V. Poverty
505 and common mental disorders in low and middle income countries: A systematic review.
506 Soc Sci Med. 2010 Aug;71(3):517-528. doi: 10.1016/j.socscimed.2010.04.027. PMID:
507 20621748
- 508 21. Galea S, Ahern J, Nandi A, Tracy M, Beard J, Vlahov D. Urban neighborhood poverty and
509 the incidence of depression in a population-based cohort study. Ann Epidemiol. 2007
510 Mar;17(3):171-9. doi: 10.1016/j.annepidem.2006.07.008. PMID: 17320784

- 511 22. Adult Psychiatric Morbidity Survey: Survey of Mental Health and Well-being, England,
512 2014 [Internet]. 2014 [Cited 11 November 2019]. Available from:
513 [https://digital.nhs.uk/data-and-information/publications/statistical/adult-psychiatric-](https://digital.nhs.uk/data-and-information/publications/statistical/adult-psychiatric-morbidity-survey/adult-psychiatric-morbidity-survey-survey-of-mental-health-and-well-being-england-2014)
514 [morbidity-survey/adult-psychiatric-morbidity-survey-survey-of-mental-health-and-well-](https://digital.nhs.uk/data-and-information/publications/statistical/adult-psychiatric-morbidity-survey/adult-psychiatric-morbidity-survey-survey-of-mental-health-and-well-being-england-2014)
515 [being-england-2014](https://digital.nhs.uk/data-and-information/publications/statistical/adult-psychiatric-morbidity-survey/adult-psychiatric-morbidity-survey-survey-of-mental-health-and-well-being-england-2014).
- 516 23. Thangiah G, Said MA, Majid HA, Reidpath D, Su TT. Income Inequality in Quality of
517 Life among Rural Communities in Malaysia: A Case for Immediate Policy Consideration.
518 *Int J Environ Res Public Health*. 2020 Nov 24;17(23):8731. doi: 10.3390/ijerph17238731
519 PMID: 33255397
- 520 24. Degan TJ, Kelly PJ, Robinson LD, Deane FP, Smith AM. Health literacy of people living
521 with mental illness or substance use disorders: A systematic review. *Early Interv*
522 *Psychiatry*. 2021 Dec;15(6):1454-1469. doi: 10.1111/eip.13090. PMID: 33254279
- 523 25. Holman D. Exploring the relationship between social class, mental illness stigma and
524 mental health literacy using British national survey data. *Health (London)*.
525 2015;19(4):413-29. doi: 10.1177/1363459314554316. PMID: 25323051
- 526 26. Ibrahim N, Amit N, Shahar S, Wee L-H, Ismail R, Khairuddin R, et al. Do depression
527 literacy, mental illness beliefs and stigma influence mental health help-seeking attitude?
528 A cross-sectional study of secondary school and university students from B40 households
529 in Malaysia. *BMC Public Health*. 2019;19(4):544. [https://doi.org/10.1186/s12889-019-](https://doi.org/10.1186/s12889-019-6862-6)
530 [6862-6](https://doi.org/10.1186/s12889-019-6862-6)
- 531 27. Mickelson KD, Hazlett E. “Why me?”: Low-income women’s poverty attributions, mental
532 health, and social class perceptions. *sex roles*. 2014 Nov 1;71(9-10):319-332.
533 <https://doi.org/10.1007/s11199-014-0414-4>
- 534 28. Yee A, Hodori NA, Tung YZ, Ooi PL, Latif SA, Isa HM, et al. Depression level and coping
535 responses toward the movement control order and its impact on quality of life in the

- 536 Malaysian community during the COVID-19 pandemic: a web-based cross-sectional study.
537 Ann Gen Psychiatry. 2021 May 24;20(1):31. doi: 10.1186/s12991-021-00352-4. PMID:
538 34030704
- 539 29. Zhang J, Yang Z, Wang X, Li J, Dong L, Wang F, Li Y, Wei R, Zhang J. The relationship
540 between resilience, anxiety and depression among patients with mild symptoms of
541 COVID-19 in China: a cross-sectional study. J Clin Nurs. 2020 Nov;29(21-22):4020-9.
542 doi: 10.1111/jocn.15425 PMID: 32702192.
- 543 30. Bank W. Global economic prospects. [Internet] The World Bank. June 2020 [Cited 2021
544 December 20]. Available from :
545 <https://openknowledge.worldbank.org/handle/10986/33748>
- 546 31. Sherina MS, Arroll B, Goodyear-Smith F. Criterion validity of the PHQ-9 (Malay version)
547 in a primary care clinic in Malaysia. Med J Malaysia. 2012;67(3):309-15. PMID:
548 23082424
- 549 32. Sherina M, Arroll B, Goodyear-Smith F. Validation of the GAD-7 (Malay version) among
550 women attending a primary care clinic in Malaysia. J Prim Health Care. 2012 Mar
551 1;4(1):5-11, A1. PMID: 22377544
- 552 33. Shafie AA, Vasan Thakumar A, Lim CJ, Luo N. Psychometric performance assessment of
553 Malay and Malaysian English version of EQ-5D-5L in the Malaysian population. Qual
554 Life Res. 2019 Jan;28(1):153-162. doi: 10.1007/s11136-018-2027-9. PMID: 30317426
- 555 34. Min Fui W. Associated Risk Factors of Mental Disorders Among Preschool Care Providers
556 in Kuala Lumpur, Malaysia [unpublished dissertation]. Kuala Lumpur: University Malaya;
557 2019.
- 558 35. Shafie AA, Thakumar AV, Lim CJ, Luo N, Rand-Hendriksen K, Yusof FA. EQ-5D-5L
559 valuation for the Malaysian population. Pharmacoeconomics. 2019 May;37(5):715-725.
560 doi: 10.1007/s40273-018-0758-7. PMID: 30535779

- 561 36. Tran BX, Ohinmaa A, Nguyen LT. Quality of life profile and psychometric properties of
562 the EQ-5D-5L in HIV/AIDS patients. *Health Qual Life Outcomes*. 2012;10:132. PMID:
563 23116130
- 564 37. Kroenke K, Spitzer RL, Williams JB. The PHQ-9: validity of a brief depression severity
565 measure. *J Gen Intern Med*. 2001 Sep;16(9):606-13. doi: 10.1046/j.1525-
566 1497.2001.016009606.x. PMID: 11556941
- 567 38. Manea L, Gilbody S, McMillan D. A diagnostic meta-analysis of the Patient Health
568 Questionnaire-9 (PHQ-9) algorithm scoring method as a screen for depression. *Gen Hosp*
569 *Psychiatry*.2015;37(1):67-75. doi: 10.1016/j.genhosppsy.2014.09.009. PMID:
570 25439733
- 571 39. Spitzer RL, Kroenke K, Williams JB, Löwe B. A brief measure for assessing generalised
572 anxiety disorder: the GAD-7. *Arch Intern Med*. 2006;166(10):1092-7. doi:
573 10.1001/archinte.166.10.1092. PMID: 16717171
- 574 40. Kroenke K, Spitzer RL, Williams JB, Monahan PO, Löwe B. Anxiety disorders in primary
575 care: prevalence, impairment, comorbidity, and detection. *Ann Intern Med*.
576 2007;146(5):317-325. doi: 10.7326/0003-4819-146-5-200703060-00004.
- 577 41. Plante TG, Boccaccini MT. The Santa Clara strength of religious faith questionnaire.
578 *Pastoral Psychol*. 1997;45(5):375-387. doi: 10.1007/BF02230993.
- 579 42. Wagnild GM, Young HM. Development and psychometric evaluation of the Resilience
580 Scale. *J Nurs Meas*. 1993;1(2):165-178. PMID: 7850498
- 581 43. Narayanan SS, Weng Onn AC. The Influence of Perceived Social Support and Self-
582 Efficacy on Resilience among First Year Malaysian Students. *Kajian Malaysia: Journal of*
583 *Malaysian Studies*. 2016;34(2): 1-23. doi:10.21315/km2016.34.2.1.

- 584 44. Hammer JH, Parent MC, Spiker DA. Mental Help Seeking Attitudes Scale (MHSAS):
585 Development, reliability, validity, and comparison with the ATSPPH-SF and IASMHS-
586 PO. *J Couns Psychol.* 2018;65(1):74. doi: 10.1037/cou0000248.
- 587 45. Ibrahim N, A'isyah M, Ching S. Validation of the Malay Mental Help Seeking Attitude
588 Scale. *International Journal of Recent Technology and Engineering (IJRTE).*
589 2019;8(2S10):74-8.
- 590 46. Ismail R, Hassan N, Mansur M, Abdul Jalil S. Empowerment B40, Issues and Strategies.
591 Selangor (MY): Social Science UKM Press; 2019.
- 592 47. Duong TV, Aringazina A, Kayupova G, Nurjanah, Pham TV, Pham KM, et al.
593 Development and validation of a new short-form health literacy instrument (HLS-SF12)
594 for the general public in six Asian countries. *Health Lit Res Pract.* 2019;3(2):e91-102. doi:
595 10.1037/cou0000248.
- 596 48. Hosmer Jr DW, Lemeshow S, Sturdivant RX. Applied logistic regression. 3rd ed. New
597 York (US): John Wiley & Sons; 2013. doi: 10.1002/9781118548387.
- 598 49. Krishnaswamy S, Subramaniam K, Jemain AA, Low WY, Ramachandran P, Indran T et
599 al. Common mental disorders in Malaysia: Malaysian mental health survey, 2003–2005.
600 *Asia Pac Psychiatry.* 2012;4(3):201-209. doi: 10.1111/j.1758-5872.2012.00180.x.
- 601 50. Abdullah MF, Yusof HA, Shariff NM, Hami R, Nisman NF, Law KS. Depression and
602 anxiety in the Malaysian urban population and their association with demographic
603 characteristics, quality of life, and the emergence of the COVID-19 pandemic. *Current*
604 *Psychology.* 2021 Feb:1-2. doi: 10.1007/s12144-021-01492-2. PMID: 33623353.
- 605 51. Wong LP, Alias H, Md Fuzi AA, Omar IS, Mohamad Nor A, Tan MP, et al. Escalating
606 progression of mental health disorders during the COVID-19 pandemic: Evidence from a
607 nationwide survey. *PloS One.* 2021 Mar 25;16(3):e0248916. doi:
608 10.1371/journal.pone.0248916. PMID: 33765039.

- 609 52. Bosman RC, Ten Have M, de Graaf R, Muntingh AD, van Balkom AJ, Batelaan NM.
610 Prevalence and course of subthreshold anxiety disorder in the general population: a three-
611 year follow-up study. *J Affective Disord.* 2019 Mar 15;247:105-113. doi:
612 10.1016/j.jad.2019.01.018.
- 613 53. Forsell Y. A three-year follow-up of major depression, dysthymia, minor depression and
614 subsyndromal depression: results from a population-based study. *Depress Anxiety*
615 2007;24(1):62-65. doi: 10.1002/da.20231.
- 616 54. Rodríguez MR, Nuevo R, Chatterji S, Ayuso-Mateos JL. Definitions and factors
617 associated with subthreshold depressive conditions: a systematic review. *BMC Psychiatry.*
618 2012 Dec;12(1):1-7. doi: 10.1186/1471-244X-12-181. PMID: 23110575
- 619 55. Priego-Parra BA, Triana-Romero A, Pinto-Gálvez SM, Ramos CD, Salas-Nolasco O,
620 Reyes MM, et al. Anxiety, depression, attitudes, and internet addiction during the initial
621 phase of the 2019 coronavirus disease (COVID-19) epidemic: A cross-sectional study in
622 México. *medRxiv.* 2020 May 15. doi: 10.1101/2020.05.10.20095844
- 623 56. Wu T, Jia X, Shi H, Niu J, Yin X, Xie J, et al. Prevalence of mental health problems during
624 the COVID-19 pandemic: A systematic review and meta-analysis. *J Affect Disord.* 2020
625 Dec 3;281:91-98. doi: 10.1016/j.jad.2020.11.117. PMID: 33310451
- 626 57. Taylor MR, Agho KE, Stevens GJ, Raphael B. Factors influencing psychological distress
627 during a disease epidemic: data from Australia's first outbreak of equine influenza. *BMC*
628 *Public Health.* 2008 Dec;8(1):1-13. doi: 10.1186/1471-2458-8-347. PMID: 18831770.
- 629 58. Moghanibashi-Mansourieh A. Assessing the anxiety level of Iranian general population
630 during COVID-19 outbreak. *Asian J Psychiatry.* 2020 Jun;51:102076. doi:
631 10.1016/j.ajp.2020.102076. PMID: 32334409.
- 632 59. Rogers JP, Chesney E, Oliver D, Pollak TA, McGuire P, Fusar-Poli P, et al. Psychiatric
633 and neuropsychiatric presentations associated with severe coronavirus infections: a

- 634 systematic review and meta-analysis with comparison to the COVID-19 pandemic. *Lancet*
635 *Psychiatry*. 2020;7(7):611-627. doi: 10.1016/S2215-0366(20)30203-0. PMID: 32437679.
- 636 60. Nicola M, Alsafi Z, Sohrabi C, Kerwan A, Al-Jabir A, Iosifidis C, et al. The socioeconomic
637 implications of the coronavirus pandemic (COVID-19): A review. *Int J Surg*. 2020
638 Jun;78:185-193. doi: 10.1016/j.ijvsu.2020.04.018. PMID: 32305533
- 639 61. Luo Y, Chua CR, Xiong Z, Ho RC, Ho CSH. A Systematic Review of the Impact of Viral
640 Respiratory Epidemics on Mental Health: An Implication on the Coronavirus Disease 2019
641 Pandemic. *Front. Psychiatry*. 2020;11. <https://doi.org/10.3389/fpsy.2020.565098>
- 642 62. Hohls JK, König HH, Quirke E, Hajek A. Association between anxiety, depression and
643 quality of life: Study protocol for a systematic review of evidence from longitudinal studies.
644 *BMJ Open*. 2019 Mar;9(3):e027218. doi: 10.1136/bmjopen-2018-027218. PMID:
645 30837260.
- 646 63. Bailey H, Janssen MF, La Foucade A, Kind P. EQ-5D-5L population norms and health
647 inequalities for Trinidad and Tobago. *Plos One*. 2019 Apr 29;14(4):e0214283. doi:
648 10.1371/journal.pone.0214283. PMID: 31034491
- 649 64. Wong EL, Cheung AW, Wong AY, Xu RH, Ramos-Goñi JM, Rivero-Arias O. Normative
650 profile of health-related quality of life for Hong Kong general population using preference-
651 based instrument EQ-5D-5L. *Value Health*. 2019 Aug 1;22(8):916-24. doi:
652 10.1016/j.jval.2019.02.014.
- 653 65. Purba FD, Hunfeld JA, Iskandarsyah A, Fitriana TS, Sadarjoen SS, Passchier J, et al.
654 Quality of life of the Indonesian general population: Test-retest reliability and population
655 norms of the EQ-5D-5L and WHOQOL-BREF. *PLoS One*. 2018 May;13(5):e0197098.
656 doi: 10.1371/journal.pone.0197098. PMID: 29750806.
- 657 66. Pattanaphesaj J, Thavorncharoensap M, Ramos-Goñi JM, Tongsir S, Ingsrisawang L,
658 Teerawattananon Y. The EQ-5D-5L valuation study in Thailand. *Expert Rev*

- 659 Pharmacoecoon Outcomes Res. 2018 Sep 3;18(5):551-8. doi:
660 10.1080/14737167.2018.1494574.
- 661 67. McCaffrey N, Kaambwa B, Currow DC, Ratcliffe J. Health-related quality of life
662 measured using the EQ-5D-5L: South Australian population norms. Health Qual Life
663 Outcomes. 2016 Dec;14(1):1-2. doi: 10.1186/s12955-016-0537-0. PMID: 27644755.
- 664 68. Nguyen LH, Tran BX, Hoang Le QN, Tran TT, Latkin CA. Quality of life profile of
665 general Vietnamese population using EQ-5D-5L. Health Qual Life Outcomes. 2017
666 Dec;15(1):1-3. doi: 10.1186/s12955-017-0771-0. PMID: 29020996.
- 667 69. Varatharajan S, Chen WS. Reliability and validity of EQ-5D in Malaysian population.
668 Appl Res Qual Life. 2012 Jun 1;7(2):209-221. doi: 10.1007/s11482-011-9156-4.
- 669 70. Cerne A, Rifel J, Rotar-Pavlic D, Svab I, Selic P, Kersnik J. Quality of life in patients with
670 depression, panic syndrome, other anxiety syndrome, alcoholism and chronic somatic
671 diseases: a longitudinal study in Slovenian primary care patients. Wien. Klin. Wochenschr.
672 2013 Jan;125(1):1-7. doi: 10.1007/s00508-012-0278-y.
- 673 71. Ma YF, Li W, Deng HB, Wang L, Wang Y, Wang PH, et al. Prevalence of depression and
674 its association with quality of life in clinically stable patients with COVID-19. J. Affect.
675 Disord. 2020 Oct 1;275:145-148. doi: 10.1016/j.jad.2020.06.033. PMID: 32658818.
- 676 72. Comer JS, Blanco C, Hasin DS, Liu SM, Grant BF, Turner JB, Olfson M. Health-related
677 quality of life across the anxiety disorders: results from the national epidemiologic survey
678 on alcohol and related conditions (NESARC). J Clin Psychiatry. 2010 Aug 24;71(1):43-
679 50. doi: 10.4088/JCP.09m05094blu. PMID: 20816036.
- 680 73. Kader Maideen SF, Mohd. Sidik S, Rampal L, Mukhtar F. Prevalence, associated factors
681 and predictors of depression among adults in the community of Selangor, Malaysia. PLoS
682 One. 2014 Apr 22;9(4):e95395. doi: 10.1371/journal.pone.0095395 PMID:24755607

- 683 74. Maideen SF, Sidik SM, Rampal L, Mukhtar F. Prevalence, associated factors and
684 predictors of anxiety: a community survey in Selangor, Malaysia. *BMC Psychiatry*.
685 2015;15(1):1-12. doi: 0.1186/s12888-015-0648-x. PMID: 26497745
- 686 75. Shanmugam H, Juhari JA, Nair P, Ken CS, Guan NC. Impacts of COVID-19 pandemic on
687 mental health in Malaysia: a single thread of hope. *MJP*. 2020 Apr 21;29(1):78-84.
688 <https://www.mjpsychiatry.org/index.php/mjp/article/view/536>
- 689 76. Implement emergency response to domestic violence amid COVID-19 crisis. Women's
690 Aid Organisation. [Internet]. 2020 April 9 [Cited 2021 December 20] Available from:
691 [https://wao.org.my/implementemergency-response-to-domesticviolence-amid-covid-19-](https://wao.org.my/implementemergency-response-to-domesticviolence-amid-covid-19-crisis/)
692 [crisis/](https://wao.org.my/implementemergency-response-to-domesticviolence-amid-covid-19-crisis/).
- 693 77. KOSMO. Covid-19 pushes more people to divorce. 2020 November 20 [Cited 2021
694 December 20] Available from: [https://www.kosmo.com.my/2020/11/20/covid-19-dorong-](https://www.kosmo.com.my/2020/11/20/covid-19-dorong-lebih-ramai-bercerai/)
695 [lebih-ramai-bercerai/](https://www.kosmo.com.my/2020/11/20/covid-19-dorong-lebih-ramai-bercerai/)
- 696 78. Sinar Harian. Divorce cases in Malaysia have recorded a remarkable increase. 2020
697 December 29 [Cited 2021 December 20] Available from:
698 [https://www.sinarharian.com.my/article/116749/BERITA/Nasional/Kes-perceraian-di-](https://www.sinarharian.com.my/article/116749/BERITA/Nasional/Kes-perceraian-di-Malaysia-rekodkan-peningkatan-luar-biasa)
699 [Malaysia-rekodkan-peningkatan-luar-biasa](https://www.sinarharian.com.my/article/116749/BERITA/Nasional/Kes-perceraian-di-Malaysia-rekodkan-peningkatan-luar-biasa)
- 700 79. Williams DT, Cheadle JE, Goosby BJ. Hard times and heart break: Linking economic
701 hardship and relationship distress. *J. Fam. Issues*. 2015 Jun;36(7):924-50. *J Fam Issues*.
702 2015 Jun;36(7):924-950. doi: 10.1177/0192513X13501666. PMID: 26097273
- 703 80. Gogtay N, Giedd JN, Lusk L, Hayashi KM, Greenstein D, Vaituzis AC, et al. Dynamic
704 mapping of human cortical development during childhood through early adulthood. *Proc*
705 *Natl Acad Sci U S A*. 2004 May 25;101(21):8174-9. doi: 10.1073/pnas.0402680101.
706 PMID: 15148381

- 707 81. IOM. Investing in the health and well-being of young adults. Washington, DC: The
708 National Academies Press.2015.
- 709 82. Huang Y, Zhao N. Generalized anxiety disorder, depressive symptoms and sleep quality
710 during COVID-19 outbreak in China: a web-based cross-sectional survey. *Psychiatry Res.*
711 2020 Jun 1;288:112954. doi: 10.1016/j.psychres.2020.112954. PMID: 32325383
- 712 83. Shevlin M, McBride O, Murphy J, Miller JG, Hartman TK, Levita L, et al. Anxiety,
713 depression, traumatic stress and COVID-19-related anxiety in the UK general population
714 during the COVID-19 pandemic. *BJPsych Open.* 2020 Oct 19;6(6):e125. doi:
715 10.1192/bjo.2020.109. PMID: 33070797
- 716 84. Edwards J, Goldie I, Elliott I, Breedvelt J, Chakkalackal L, Foye U, et al. Fundamental
717 facts about mental health. MHF. [Internet] 2016 [Cited 2020 March 3]. Available from:
718 [https://www.mentalhealth.org.uk/publications/fundamental-facts-about-mental-health-](https://www.mentalhealth.org.uk/publications/fundamental-facts-about-mental-health-2016)
719 2016
- 720 85. Cheah YK, Azahadi M, Phang SN, Abd Manaf NH. Sociodemographic, lifestyle, and
721 health factors associated with depression and generalised anxiety disorder among
722 Malaysian adults. *J Prim Care Community Health.* Jan-Dec 2020;11:2150132720921738.
723 doi: 10.1177/2150132720921738. PMID: 32450747
- 724 86. Institute for Public Health (IPH), National Institutes of Health, Ministry of Health
725 Malaysia. National Health and Morbidity Survey (NHMS) 2019: Vol. I: NCDs–Non-
726 Communicable Diseases: Risk Factors and Other Health Problems.
- 727 87. Mundt A, Kliewe T, Yayla S, Ignatyev Y, Busch MA, Heimann H, Heinz A, Rapp MA,
728 Schouler-Ocak M, Ströhle A, Aichberger MC. Social characteristics of psychological
729 distress in disadvantaged areas of Berlin. *Int J Soc Psychiatry.* 2014 Feb;60(1):75-82. doi:
730 10.1177/0020764012464017. PMID: 23117825

- 731 88. Ahmad A, Rahman I, Agarwal M. Early psychosocial predictors of mental health among
732 Indians during coronavirus disease 2019 outbreak. JHSCI [Internet]. 2020 July 14 [Cited
733 2022 January 30];10(2):147-56. Available from:
734 <https://www.jhsci.ba/ojs/index.php/jhsci/article/view/950>
- 735 89. Uphoff EP, Newbould L, Walker I, Ashraf N, Chaturvedi S, Kandasamy A, et al. A
736 systematic review and meta-analysis of the prevalence of common mental disorders in
737 people with non-communicable diseases in Bangladesh, India, and Pakistan. J. Glob.
738 Health. 2019 Dec;9(2). J Glob Health. 2019 Dec;9(2):020417. doi:
739 10.7189/jogh.09.020417. PMID: 31893031
- 740 90. Lin EH, Rutter CM, Katon W, Heckbert SR, Ciechanowski P, Oliver MM, Ludman EJ,
741 Young BA, Williams LH, McCulloch DK, Von Korff M. Depression and advanced
742 complications of diabetes: a prospective cohort study. Diabetes Care. 2010 Feb;33(2):264-
743 9. doi: 10.2337/dc09-1068. PMID: 19933989
- 744 91. Köhler CA, Evangelou E, Stubbs B, Solmi M, Veronese N, Belbasis L, et al. Mapping risk
745 factors for depression across the lifespan: an umbrella review of evidence from meta-
746 analyses and Mendelian randomisation studies. J. Psychiatr. Res. 2018 Aug 1;103:189-207.
747 <https://doi.org/10.1016/j.jpsychires.2018.05.020>
- 748 92. Lim L, Ng TP, Chua HC, Chiam PC, Won V, Lee T, et al. Generalised anxiety disorder in
749 Singapore: prevalence, co-morbidity and risk factors in a multi-ethnic population. Soc
750 Psychiatry Psychiatr Epidemiol. 2005 Dec 1;40(12):972-9. doi: 10.1007/s00127-005-
751 0978-y. PMID: 16249971
- 752 93. McEvoy PM, Grove R, Slade T. Epidemiology of anxiety disorders in the Australian
753 general population: findings of the 2007 Australian National Survey of Mental Health and
754 Wellbeing. Aust NZJ Psychiatry. 2011 Nov;45(11):957-67. doi:
755 10.3109/00048674.2011.624083. PMID: 22044173

- 756 94. Amiri M, Majid HA, Hairi F, Thangiah N, Bulgiba A, Su TT. Prevalence and determinants
757 of cardiovascular disease risk factors among the residents of urban community housing
758 projects in Malaysia. *BMC Public Health*. 2014 Dec;14(3):1-9.
759 <https://doi.org/10.1186/1471-2458-14-S3-S3>
- 760 95. Su TT, Azzani M, Adewale AP, Thangiah N, Zainol R, Majid H. Physical Activity and
761 Health-Related Quality of Life Among Low-Income Adults in Metropolitan Kuala
762 Lumpur. *J Epidemiol*. 2019 Feb 5;29(2):43-49. doi: 10.2188/jea.JE20170183. PMID:
763 29962493
- 764 96. Azizan NA, Thangiah N, Su TT, Majid HA. Does a low-income urban population practise
765 healthy dietary habits?. *Int Health*. 2018 Mar 1;10(2):108-115. doi:
766 10.1093/inthealth/ihy00. PMID: 29462331
- 767 97. Su TT, Amiri M, Mohd Hairi F, Thangiah N, Bulgiba A, Majid HA. Prediction of
768 cardiovascular disease risk among low-income urban residents in metropolitan Kuala
769 Lumpur, Malaysia. *Biomed Res Int*. 2015 Mar 2;2015. doi: 10.1155/2015/516984.
- 770 98. Zheng M, Jin H, Shi N, Duan C, Wang D, Yu X, et al. The relationship between health
771 literacy and quality of life: a systematic review and meta-analysis. *Health Qual Life*
772 *Outcomes*. 2018 Oct 16;16(1):201. doi: 10.1186/s12955-018-1031-7. PMID: 30326903
- 773 99. Ssebunnya J, Kigozi F, Lund C, Kizza D, Okello E. Stakeholder perceptions of mental
774 health stigma and poverty in Uganda. *BMC Int Health Hum Rights*. 2009 Dec;9(1):5
775 <https://doi.org/10.1186/1472-698X-9-5>
- 776 100. Bullock HE, Waugh IM. Beliefs about Poverty and Opportunity among Mexican
777 Immigrant Farm Workers 1. *J Appl Soc Psychol*. 2005 Jun;35(6):1132-49.
778 <https://doi.org/10.1111/j.1559-1816.2005.tb02163.x>

- 779 101. Bullock HE. Attributions for Poverty: A Comparison of Middle-Class and Welfare
780 Recipient Attitudes 1. *J Appl Soc Psychol.* 1999 Oct;29(10):2059-82.
781 <https://doi.org/10.1111/j.1559-1816.1999.tb02295.x>
- 782 102. Norisan A, Jalaluddin A, Suzana S. *Memperkasa B40 Isu dan Strategi Sains Sosial*. Bangi:
783 Universiti Kebangsaan Malaysia (UKM). 2019. ISBN 9789672388302
- 784 103. Rickwood D, Deane FP, Wilson CJ, Ciarrochi J. Young people's help-seeking for mental
785 health problems. *AeJAMH.* 2005 Jan 1;4(3):218-51. doi: 10.5172/jamh.4.3.218
- 786 104. Penang Institute. *Bridging barriers: A report on improving access to mental healthcare in*
787 *Malaysia*. [Internet] Pulau Pinang; 2018. [Cited 2021 December 20]. 141 p. Available from:
788 [https://penanginstitute.org/programmes/penang-institute-in-kuala-lumpur/1032-bridging-](https://penanginstitute.org/programmes/penang-institute-in-kuala-lumpur/1032-bridging-barriers-a-study-on-improving-access-to-mental-healthcare-in-malaysia/)
789 [barriers-a-study-on-improving-access-to-mental-healthcare-in-malaysia/](https://penanginstitute.org/programmes/penang-institute-in-kuala-lumpur/1032-bridging-barriers-a-study-on-improving-access-to-mental-healthcare-in-malaysia/)
- 790 105. Hu T, Zhang D, Wang J. A meta-analysis of the trait resilience and mental health. *Pers*
791 *Individ Dif.* 2015 Apr 1;76:18-27. <https://doi.org/10.1016/j.paid.2014.11.039>
- 792 106. Wu Y, Sang ZQ, Zhang XC, Margraf J. The relationship between resilience and mental
793 health in Chinese college students: a longitudinal cross-lagged analysis. *Front. Psychol.*
794 2020 Feb 5;11:108. doi: 10.3389/fpsyg.2020.00108. PMID: 32116918

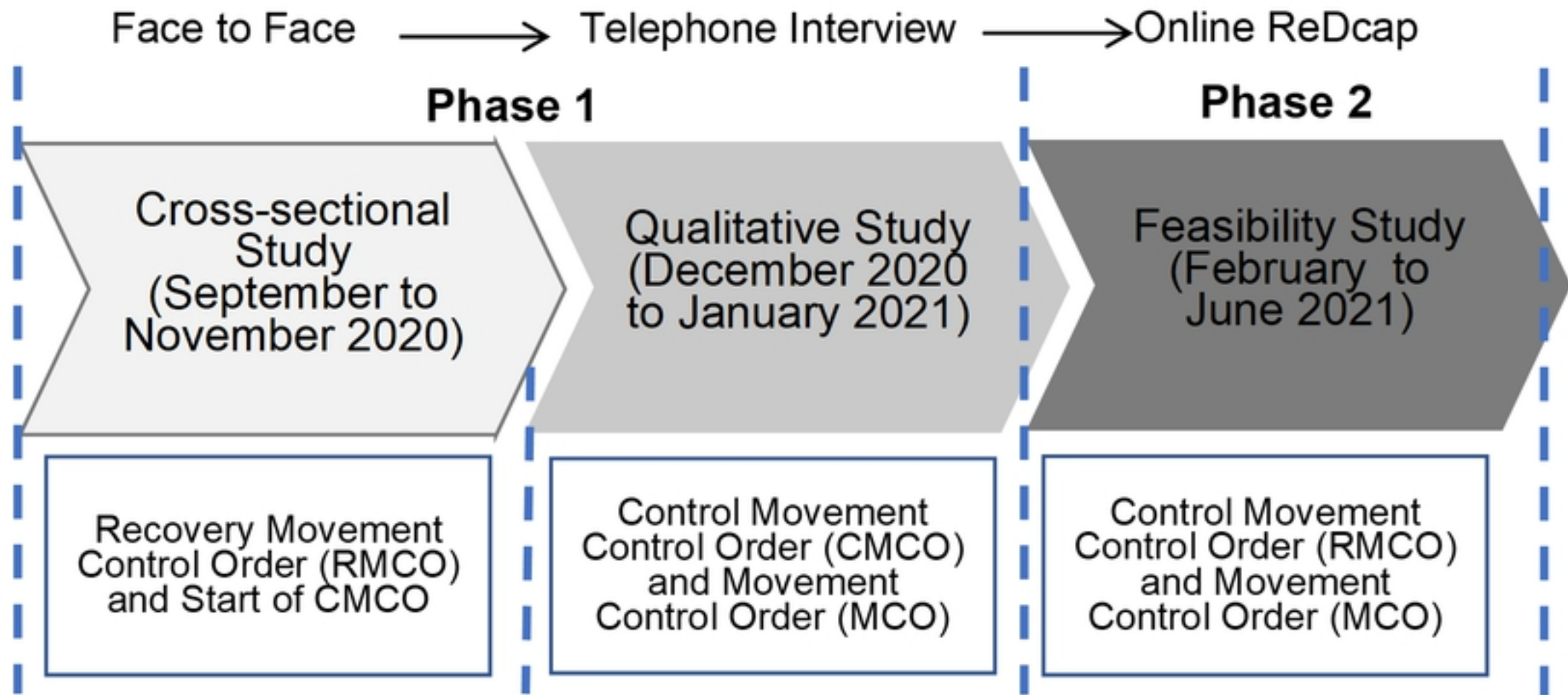


FIGURE 1

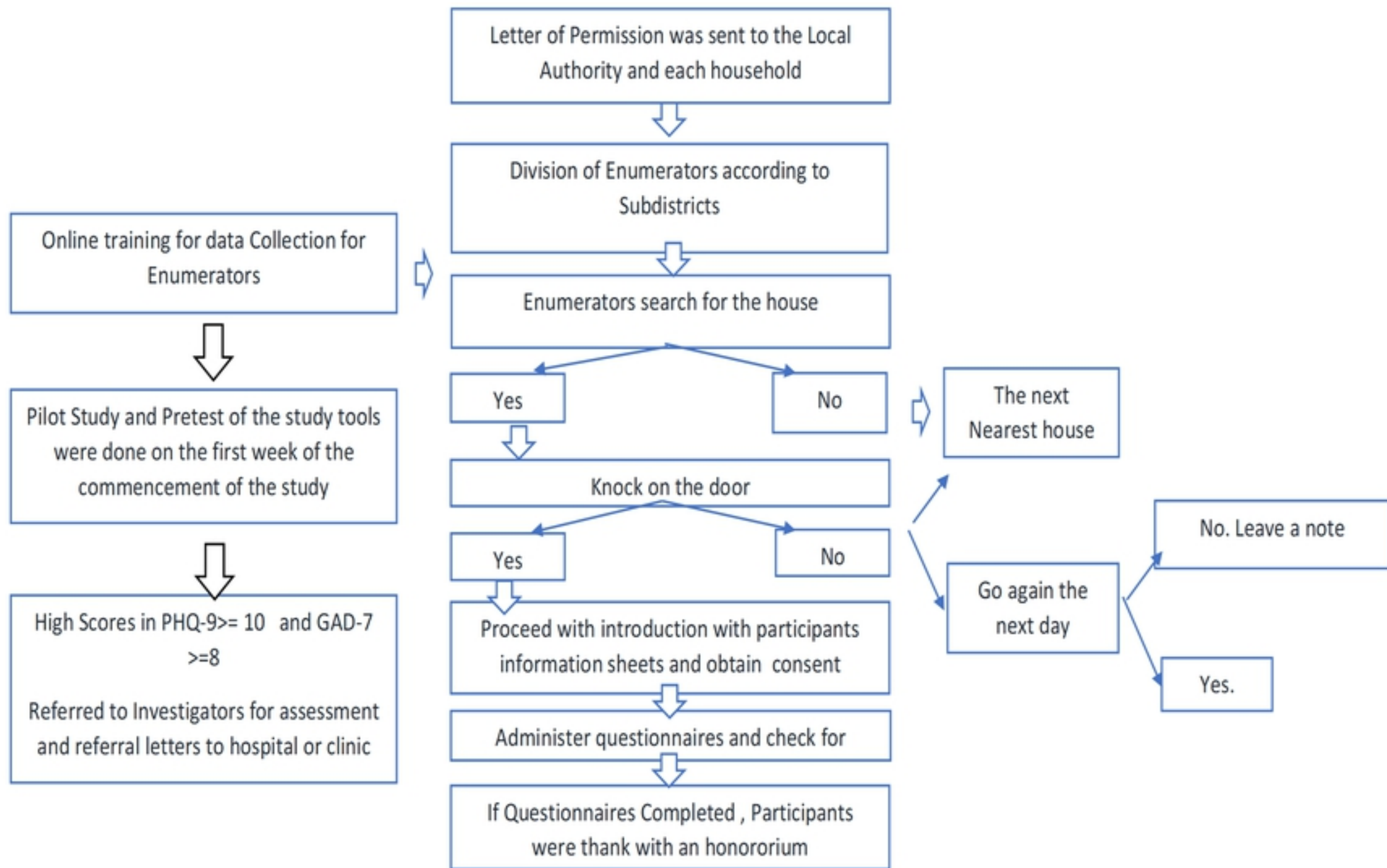


FIGURE 2