

1 **The acute lag effects of elevated ambient air pollution on stillbirth**  
2 **risk in Ulaanbaatar, Mongolia**

3 Temuulen Enebish<sup>1</sup>, David Warburton<sup>2,3</sup>, Rima Habre<sup>4</sup>, Carrie Breton<sup>4</sup>, Nomindelger Tuvshindorj<sup>5</sup>,

4 Gantuya Tumur<sup>5</sup>, Bayalag Munkhuu<sup>5</sup>, Meredith Franklin<sup>6</sup>

5

6 <sup>1</sup>World Health Organization Country Office, Ulaanbaatar, Mongolia

7 <sup>2</sup>Saban Research Institute, Children's Hospital Los Angeles, Los Angeles, California, USA

8 <sup>3</sup>Department of Pediatrics, Keck School of Medicine, University of Southern California, Los  
9 Angeles, California, USA

10 <sup>4</sup>Department of Population and Public Health Sciences, Keck School of Medicine, University of  
11 Southern California, Los Angeles, California, USA

12 <sup>5</sup>Department of Surveillance and Research, National Center for Maternal and Child Health,  
13 Ulaanbaatar, Mongolia

14 <sup>6</sup>Department of Statistical Sciences, University of Toronto, Toronto, Ontario, Canada

15

16

17

18 **Corresponding author:**

19 Name: Temuulen Enebish

20 Email: [temuulen@gmail.com](mailto:temuulen@gmail.com)

21 Postal address: PO Box 219, PO Office 49, Ulaanbaatar, Mongolia 13381

## 22 Abstract

23 Ulaanbaatar city (UB), the capital and the home to half of Mongolia's total population, has  
24 experienced extreme seasonal air pollution in the past two decades with levels of fine particulate  
25 matter with an aerodynamic diameter less than 2.5 micrometers (PM<sub>2.5</sub>) exceeding 500  $\mu\text{g}/\text{m}^3$  during  
26 winter. Based on monitoring data, (PM<sub>2.5</sub>), sulfur dioxide (SO<sub>2</sub>), nitrogen dioxide (NO<sub>2</sub>), and carbon  
27 monoxide (CO) exposures were estimated for residential areas across UB using Random Forest  
28 models. We collected individual-level data on 1093 stillbirths from UB hospital records (2010-2013)  
29 and a surveillance database (2014-2018). Using a time-stratified case-crossover design, we  
30 investigated whether short-term increases in daily ambient air pollutants with different exposure lags  
31 (2 to 6 days) before delivery were associated with stillbirth. We estimated associations using  
32 conditional logistic regression and examined individual-level characteristics for effect modification.  
33 During the cold season (Oct-Mar) we observed significantly elevated relative odds of stillbirth per  
34 interquartile range increase in mean concentrations of PM<sub>2.5</sub> (odds ratio [OR]=1.35, 95% confidence  
35 interval [CI]=1.07-1.71), SO<sub>2</sub> (OR=1.71, 95% CI=1.06-2.77), NO<sub>2</sub> (OR=1.30, 95% CI=0.99-1.72),  
36 and CO (OR=1.44, 95% CI=1.17-1.77) 6 days before delivery after adjusting for apparent  
37 temperature with a natural cubic spline. The associations of pollutant concentrations with stillbirth  
38 were significantly stronger among those younger than 25, nulliparous, and without comorbidities or  
39 pregnancy complications during stratified analyses. There was a clear pattern of increased risk for  
40 women living in areas of lower socioeconomic status. We conclude that acute exposure to ambient  
41 air pollution before delivery may trigger stillbirth, and this risk is higher for certain subsets of  
42 women.

## 43 **Background**

44           Despite remarkable achievements in women's and children's health in the last 15 years, 2.6  
45 million stillbirths in the third trimester occurred worldwide in 2015 (Lawn et al., 2016). Stillbirth was  
46 not included in the Millennium Development Goals (United Nations, 2015a) and is still missing  
47 from the Sustainable Development goals (United Nations, 2015b). Policies and programs of  
48 international and national organizations hardly mention the issue of stillbirth, and it remains an  
49 under-financed public health concern. The burden of stillbirth affects women and families by  
50 causing psychological and emotional distress and negatively influences communities and society in  
51 terms of reduced earnings and increased healthcare expenses. An estimated 4.2 million women live  
52 with depression associated with a previous stillbirth (Heazell et al., 2016). Various modifiable risk  
53 factors, including maternal age, infectious diseases, lifestyle, and environmental factors, are identified  
54 for stillbirth (Lawn et al., 2016). In the past few decades, researchers worldwide have made  
55 numerous attempts at ascertaining the effect of environmental exposures such as ambient  
56 temperature and air pollution on adverse pregnancy outcomes (Bekkar et al., 2020; Chersich et al.,  
57 2020; Klepac et al., 2018). Several reviews summarized the evidence of adverse effects of ambient air  
58 pollution on birth outcomes such as preterm birth and low birth weight (Jacobs et al., 2017; Li et al.,  
59 2017; Sapkota et al., 2012; Stieb et al., 2012). In contrast, relatively few studies have investigated the  
60 association between ambient air pollution and stillbirth. Two recent reviews found suggestive  
61 evidence of increased risk of acute and chronic exposure to both gaseous and particulate pollutants  
62 on stillbirth occurrence (Siddika et al., 2016; Zhang et al., 2021).

63           Although the biological mechanism by which ambient air pollutants, notably fine particulate  
64 matter with an aerodynamic diameter less than 2.5 micrometers (PM<sub>2.5</sub>), may influence fetal survival  
65 is not yet well understood, the literature suggests several processes to describe associations between  
66 PM and adverse pregnancy outcomes. One possible pathway indicates that free iron ions on particle

67 surfaces can react with superoxide or hydrogen peroxide to generate highly reactive hydroxyl  
68 radicals, which causes excessive oxidative stress that may lead to the degradation of lipids, proteins,  
69 and DNA of the placenta (Fortoul et al., 2015). In addition, activation of the inflammatory system  
70 may cause PM-mediated oxidative stress. Compounds that adversely affect the immune system  
71 promote the release of pro-inflammatory cytokines. In turn, they give a positive feedback loop to  
72 form more reactive oxygen species (ROS) and oxidative stress (Al-Gubory et al., 2010). Another  
73 potential explanation is that DNA damage induced by pollution may have devastating impacts on a  
74 developing fetus whose cells are dividing at a high rate. Studies connecting air pollution to  
75 congenital malformations may support this pathway (Padula et al., 2013; Vrijheid et al., 2011). Other  
76 studies indicate that air pollution disturbs placental health through injury or inflammation, initiating  
77 a severe lack of nutrient transfer between mother and fetus (van den Hooven et al., 2012). To  
78 accurately examine the potential mechanistic explanations, additional analyses are required to verify  
79 these findings and explore more thoroughly the times during pregnancy when pollutants may impact  
80 the fetus resulting in stillbirth.

81 Ulaanbaatar (UB), the capital city of Mongolia, is in the Tuul river valley between big  
82 mountains and resultingly prone to atmospheric inversions in the winter, whereby air pollutants are  
83 trapped close to the ground unable to become diluted in the mixing layer of the troposphere.  
84 Almost 60% of the city residents used raw coal to heat their home (usually Ger, which is a  
85 Mongolian traditional portable dwelling) and cook their meals in cookstoves at the time of this  
86 study. This makes UB one of the most polluted cities in the world during winter when there is  
87 almost constant atmospheric inversion over the city. Our study area has four major public maternity  
88 hospitals that deliver more than 98% of all babies in the city. This situation makes UB a unique  
89 location where we can study the acute association between stillbirth and air pollution in a relatively

90 cost-effective and timely manner despite the average stillbirth rate in UB being 7.7 per 1000 total  
91 births in 2015 (Lawn et al., 2016).

92 This paper examined the short-term effect of particulate matter on the risk of stillbirth  
93 across lags of 2-6 days. We also investigated the effect modification of these associations by  
94 socioeconomic risk factors of stillbirth.

## 95 **Methods**

96 Ulaanbaatar city registered about 36 000 deliveries and 250 stillbirths on average per year  
97 between 2010 and 2018 across nine districts, which consist of a varying number of Khorooos (minor  
98 administrative units of the city). The current study includes stillbirths occurring between January 1,  
99 2010, and December 31, 2018, in 6 contiguous districts (138 Khorooos) of UB. The Institutional  
100 Review Boards at the Health Sciences Campus of USC, the Children's Hospital Los Angeles, and the  
101 Medical Ethics Committee of the Ministry of Health of Mongolia approved the study design and  
102 methods.

## 103 **Study population**

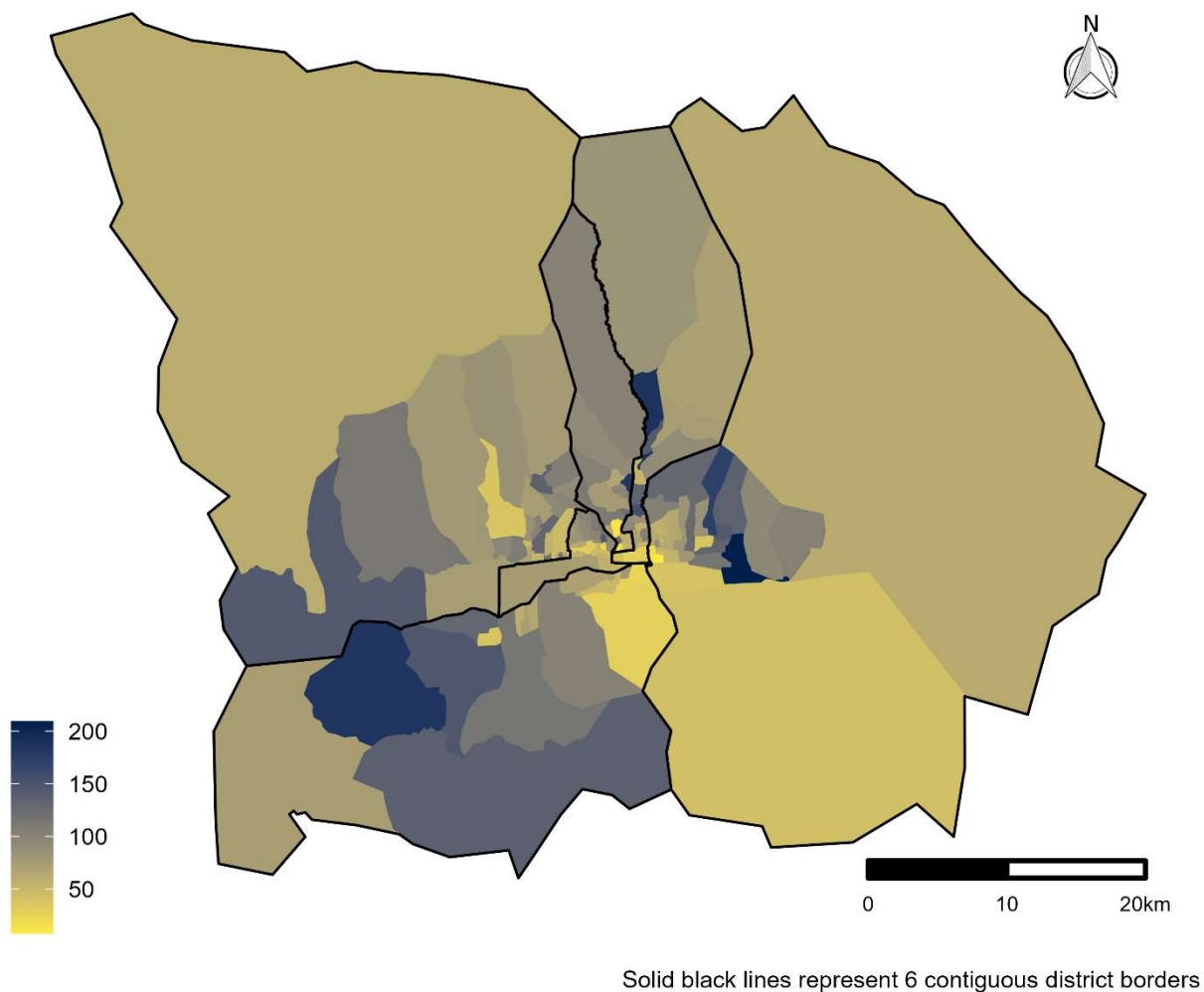
104 We used two different data sources to collect individual-level stillbirth data. Between 2010  
105 and 2013, records were only available at maternity hospital archives in the form of a birth record as  
106 there was no official surveillance of stillbirth during this period. In order to collect these data, we  
107 hired and trained eight research assistants to help with data abstraction from the paper-based birth  
108 records into a computer database. In August 2017, we abstracted the stillbirth data using four two-  
109 person teams where one person read paper records, and the other person entered them into the  
110 database. Each team member double-checked every record entry. The National Center for Maternal  
111 and Child Health (NCMCH) of Mongolia established a Department of Surveillance that conducts  
112 nationwide surveillance on maternal and child health indicators in 2014. They use specific forms for

113 each maternal and child health endpoint to collect data. We obtained individual-level stillbirth data  
114 between 2014 and 2018 using the department's electronic database of stillbirth forms. See  
115 Supplemental Materials for the translated version of the form.

116 We abstracted the following information from the birth records and the stillbirth form:  
117 maternal age, residential address, occupation, gravidity, parity, prenatal care status, delivery hospital,  
118 date of stillbirth, fetal gender, weight, length, and gestational age. We used the best obstetric estimate  
119 variable on the birth record to determine gestational age, which combines the last menstrual period  
120 and ultrasound parameters, as is commonly accepted in clinical practice for gestational age  
121 estimation. The Ministry of Health of Mongolia uses the following definition for stillbirth: the birth  
122 of a fetus with  $\geq 500$  grams weight at or beyond the 22nd week of gestation and who had no signs of  
123 life such as heartbeat, umbilical cord pulse, or muscle movement at birth (Ministry of Health,  
124 Guideline for the Calculation and Definition of Main Health Indicators, 2004, page 19). We included  
125 stillbirths based on the following criteria: singleton status, maternal residence in one of the six  
126 central districts, and delivery at four major public maternity hospitals (Figure 1). We excluded  
127 intrapartum stillbirths based on biological plausibility: the definition being a fetal death occurring  
128 after the onset of labor and prior to delivery (Tavares Da Silva et al., 2016). Based on the residential  
129 Khoroo of each subject, we also obtained Khoroo-level variables such as percentage of households  
130 with internet connectivity (a proxy for socioeconomic status) and percentage of Ger households  
131 from the UB Office of Statistics, and the number of stoves per square kilometer from the UB Office  
132 of Air Pollution Reduction (Narmandakh et al., 2018).

## Geographical distribution of stillbirth cases in Ulaanbaatar, 2010-2018

Number of stillbirth cases per 100,000, by khoroo



133

134 Figure 1. Ulaanbaatar city map of 6 main contiguous districts, the colors represent the rate of stillbirth cases

### 135 Exposure data

136 We linked daily air pollution concentrations that were estimated using a previously  
137 developed and validated spatiotemporal model (Enebish et al., 2020) to the residential Khorooos and  
138 for the relevant dates of each stillbirth case. Briefly, our model used ground-level measurements  
139 from stationary stations supplemented with multiple spatiotemporal covariates including  
140 meteorological (atmospheric temperature, relative humidity, wind speed, wind direction), land use

141 (length of roads) as well as population (Ger households, stove density), and indicators for time (day  
142 of year, season, month). We evaluated six different machine learning algorithms and found that  
143 decision trees, particularly Random Forest models, performed the best with leave-one-location-out  
144 cross-validation  $R^2$  of 0.82 and hold-out test  $R^2$  of 0.96 for  $PM_{2.5}$ . These Random Forest models  
145 were used to predict daily  $PM_{2.5}$ ,  $SO_2$ ,  $NO_2$ , and CO concentrations at the centroid of each Khoroo  
146 of UB city between 2010 and 2018. In addition, we retrieved meteorological variables from two  
147 stations (Chinggis Khaan Intl, Songiin) in UB that send their data to the Global Hourly Integrated  
148 Surface Dataset of the National Oceanic and Atmospheric Administration (NOAA National Centers  
149 for Environmental Information, n.d.). Using these data, we calculated Apparent Temperature (AT)  
150 as either a wind chill index or a heat index depending on the temperature. Wind chill combines  
151 temperature and wind velocity to capture how cold the weather feels to the average person when the  
152 temperature falls below  $0^\circ C$ . We used equations used by Environment and Climate Change Canada  
153 (Nelson et al., 2002) since Mongolian National Agency for Meteorology and Environmental  
154 Monitoring (NAMEM) currently does not have a formula adopted. Depending on air temperature  
155 and wind speed, we applied Equation 1 when the temperature of the air was  $\leq 0^\circ C$  and the reported  
156 wind speed was  $\geq 5$  km/h, and Equation 2 when the temperature of the air was  $\leq 0^\circ C$  and the  
157 reported wind speed was  $> 0$  km/h but  $< 5$  km/h.

158 Equation 1:

$$159 \quad W = 13.12 + 0.6215 \times T_{air} - 11.37 \times V_{10m}^{0.16} + 0.3965 \times T_{air} \times V_{10m}^{0.16}$$

160 Equation 2:

$$161 \quad W = T_{air} + [(-1.59 + 0.1345 \times T_{air})/5] \times V_{10m}$$



162 Where  $W$  is the wind chill index in degrees Celsius,  $T_{air}$  is the air temperature in degrees  
163 Celsius ( $^{\circ}\text{C}$ ), and  $V_{10m}$  is the wind speed at 10 meters (standard anemometer height), in kilometers  
164 per hour (km/h).

165 The heat index measures heat exposure and combines temperature and relative humidity to  
166 obtain perceived temperature when the weather is hot. We used the US National Weather Service  
167 algorithm implemented by the R package "weathermetrics" (Anderson et al., 2013) to calculate AT  
168 when the atmospheric temperature was more than  $5^{\circ}\text{C}$ .

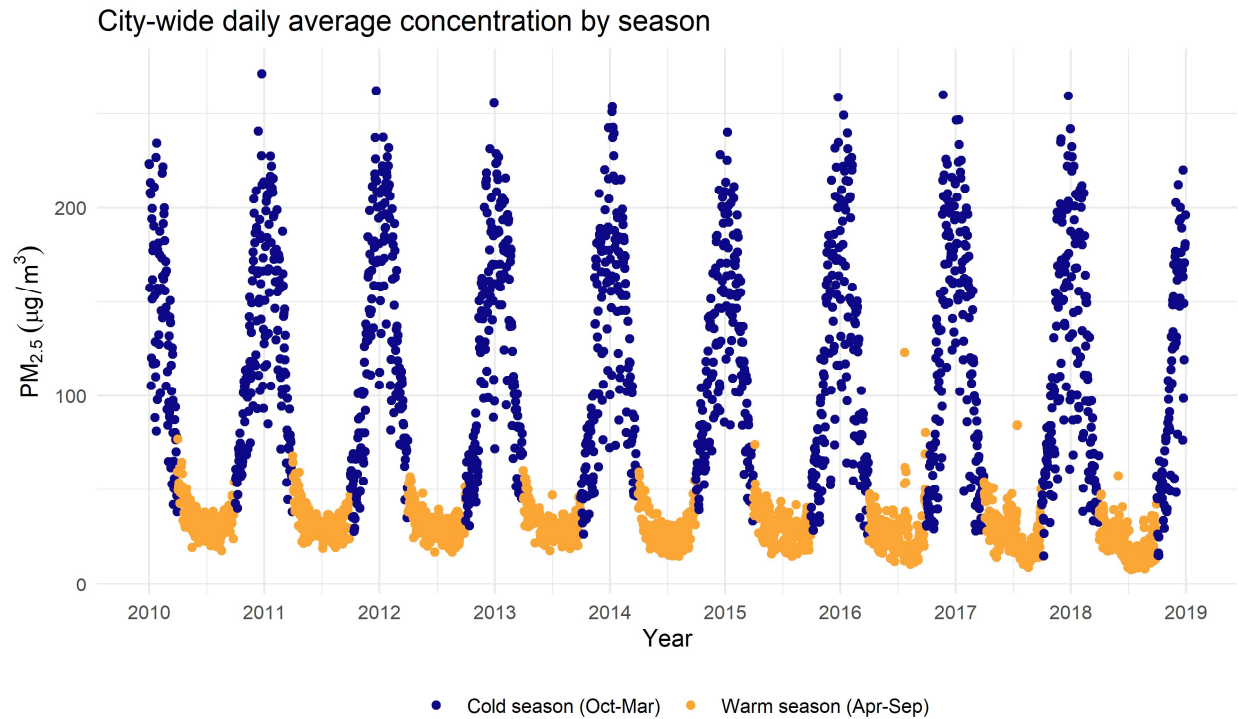
### 169 **Study design**

170 Using a time-stratified case-crossover design, we estimated the relative odds of stillbirth  
171 associated with each interquartile range (IQR) increase in mean pollutant concentrations. Maclure  
172 first proposed the case-crossover design to study the transient effect of exposure on rare-acute onset  
173 disease (Maclure, 1991). Conceptually, the design resembles a combination of retrospective,  
174 nonrandomized crossover design and matched case-control design. The main difference is that the  
175 case-crossover design only uses a sample of the base population-time by including only cases to  
176 allow control of time-independent confounders within subjects. The design derives the effect  
177 estimates by comparing exposure before the event with exposure at other control (referent) times.  
178 Choosing referent times in case-crossover studies of air pollution is particularly important due to  
179 time-dependent confounders, time trends, and autocorrelation in the air pollution exposure. The  
180 time-stratified referent scheme is the only referent selection that can avoid overlap bias due to  
181 conditional logistic regression estimating equations and time-trend bias by selecting random index  
182 dates based on stratification (Janes et al., 2005). We stratified on year, month, and day of the week to  
183 control long-term, seasonal, and daily trends using time-stratified referent selection. We selected  
184 referent (control) periods as every seventh day during the same month as the stillbirth (case period).

185 For instance, if the case period was on Wednesday, every other Wednesday in the same month was  
186 considered a control period. We looked at lag days between 2 and 6 as possible case periods because  
187 it may take an average of 48-70 hours for the deceased fetus to be expelled from the womb (Gardosi  
188 et al., 1998; Genest et al., 1992).

## 189 **Statistical analysis**

190 We utilized conditional logistic regression to estimate the odds ratios (OR) of delivering  
191 stillbirth for every IQR increase in PM<sub>2.5</sub> on lag days 2 to 6. Models were estimated using a stratified  
192 Cox model, with each subject assigned to its stratum (Gail et al., 1981). We adjusted each model  
193 with a natural cubic spline (4 degrees of freedom) of the mean apparent temperature on  
194 corresponding lag days to control for time-variant meteorological factors and their non-linear  
195 relationship with stillbirth as in previous studies (Faiz et al., 2013). We also conducted a seasonally  
196 stratified analysis, restricting the models to cases that occurred only in the cold season (October-  
197 March), considering the disproportional seasonal variation caused by air pollution emission sources  
198 in UB during cold weather (Figure 2). The same models were fit to SO<sub>2</sub>, NO<sub>2</sub>, and CO with their  
199 ORs and 95% confidence intervals (CIs) scaled to the IQR of each pollutant. We ran stratified  
200 analyses based on the following variables to evaluate differential risks of stillbirth by individual case  
201 characteristics: maternal age, employment, number of previous pregnancies and deliveries,  
202 comorbidity, pregnancy complication as well as residential level covariates such as percentage of Ger  
203 households and households with internet connectivity in each subject's living Khoroo. All statistical  
204 modeling and geospatial computing were performed in R version 3.6.2 (R Core Team, 2019) using  
205 packages "tidyverse" (Wickham et al., 2019), "sf" (Pebesma, 2018), and "survival" (Therneau &  
206 Grambsch, 2000).



Estimates are from the Random Forest model

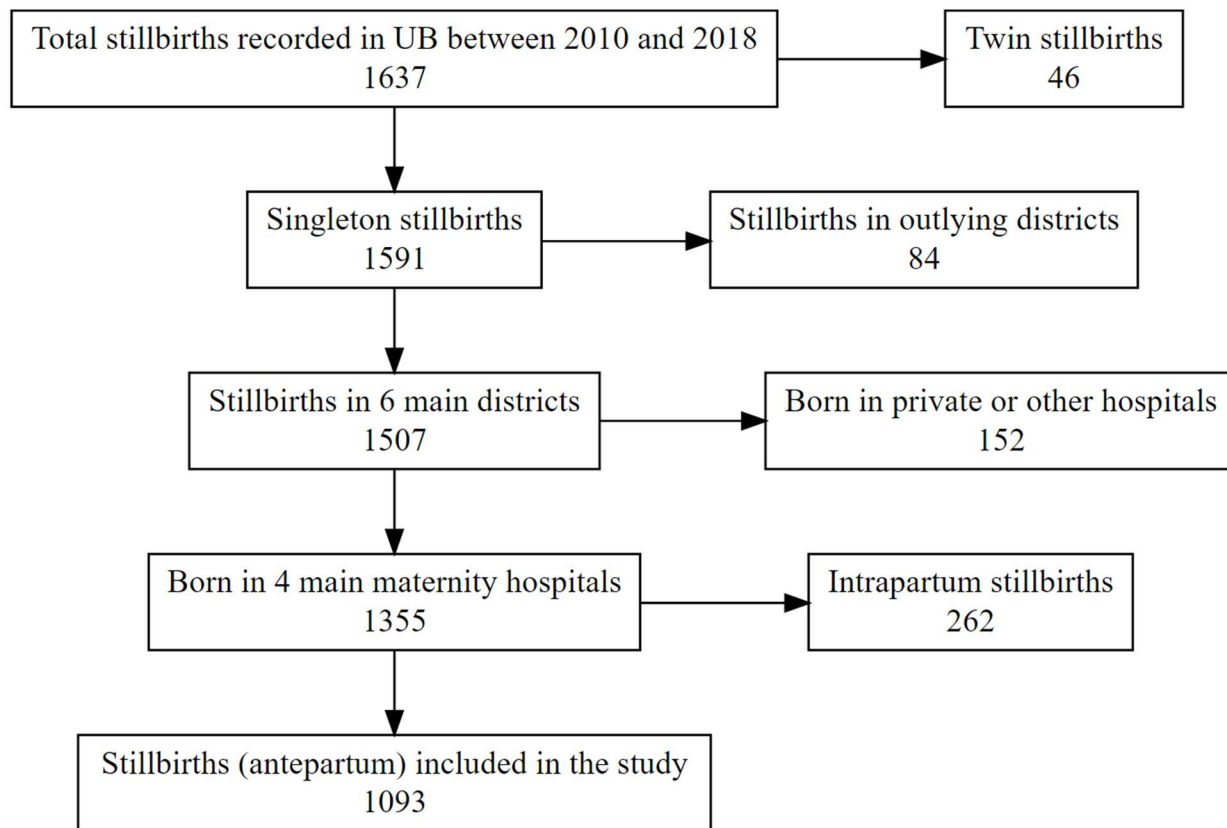
207

208 Figure 2. Seasonal variation of modeled PM<sub>2.5</sub> concentration in UB

## 209 Results

210 After applying inclusion and exclusion criteria, our study population consisted of 1093

211 stillbirth cases between 2010 and 2018 (Figure 3).



212

213 Figure 3. Flow chart of the study population

214 Almost a quarter of stillbirths occurred among women aged 35 years or older, and the  
215 subjects were divided equally among employed and unemployed status. More than half (54%) of the  
216 women had been pregnant more than two times; however, a third (35%) of the women had never  
217 given birth before. About 65% of the subjects had one or more pregnancy complications, and  
218 approximately half of them had various comorbidities. In terms of fetal variables, there was no  
219 dominant fetal gender. The majority weighed less than 2500 grams and had gestational weeks less  
220 than 36 weeks (Table 1). Table 1 shows that majority of the cases came from Khorroos with lower  
221 internet connectivity, more Ger households, and higher stove density.

222

223

224 Table 1. Characteristics of Mothers and Stillbirths, Ulaanbaatar 2010–2018

	[ALL] N=1093	N
<b>Maternal covariates</b>		
Age (years), N (%):		1093
<25	286 (26.2%)	
25-34	539 (49.3%)	
>=35	268 (24.5%)	
Employment, N (%):		1088
Employed or Student	574 (52.8%)	
Unemployed	514 (47.2%)	
Pregnancies, N (%):		1093
2 or less	500 (45.7%)	
More than 2	593 (54.3%)	
Deliveries, N (%):		1092
One or more	712 (65.2%)	
None	380 (34.8%)	
Comorbidities, N (%)	504 (48.8%)	1033
Pregnancy complications, N (%)	649 (65.2%)	995
<b>Fetal covariates</b>		
Gender, N (%):		1092
Female	528 (48.4%)	
Male	564 (51.6%)	
Weight (grams), N (%):		1092
>=4000	50 (4.58%)	
2500-3999	435 (39.8%)	
500-2499	607 (55.6%)	
Gestational week, N (%):		1078
22-26 weeks	60 (5.57%)	
27-36 weeks	566 (52.5%)	
>=37 weeks	452 (41.9%)	
<b>Residential covariates</b>		
Percentage of households with internet connectivity, N (%):		1088
45% or less	823 (75.6%)	
more than 45%	265 (24.4%)	
Percentage of Ger households, N (%):		1088
20% or less	266 (24.4%)	
more than 20%	822 (75.6%)	
Stoves (per sq.km.), N (%):		1088
15 stoves or less	271 (24.9%)	
more than 15 stoves	817 (75.1%)	

225 The models looking at the overall period showed a consistently increased risk of stillbirth on  
 226 3 and 6 days before delivery for all pollutants examined (Table 2 and Figure 4). Odds ratios on lag  
 227 day 6 were generally higher than the estimates on lag day 3. Only carbon monoxide had a statistically  
 228 significant elevated risk on lag day six at  $\alpha=0.05$  significance level. In models restricted to the cold  
 229 season, most effect estimates except NO<sub>2</sub> increased considerably. Previously non-significant odds  
 230 ratios on lag day 6 in overall models reached statistical significance for PM<sub>2.5</sub> (OR:1.35, 95% CI:1.07-  
 231 1.71) and SO<sub>2</sub> (OR:1.71, 95% CI:1.06-2.77). We also found a statistically significant increased risk of  
 232 stillbirth per IQR increase in mean PM<sub>2.5</sub> 3 days before delivery (Figure 4).

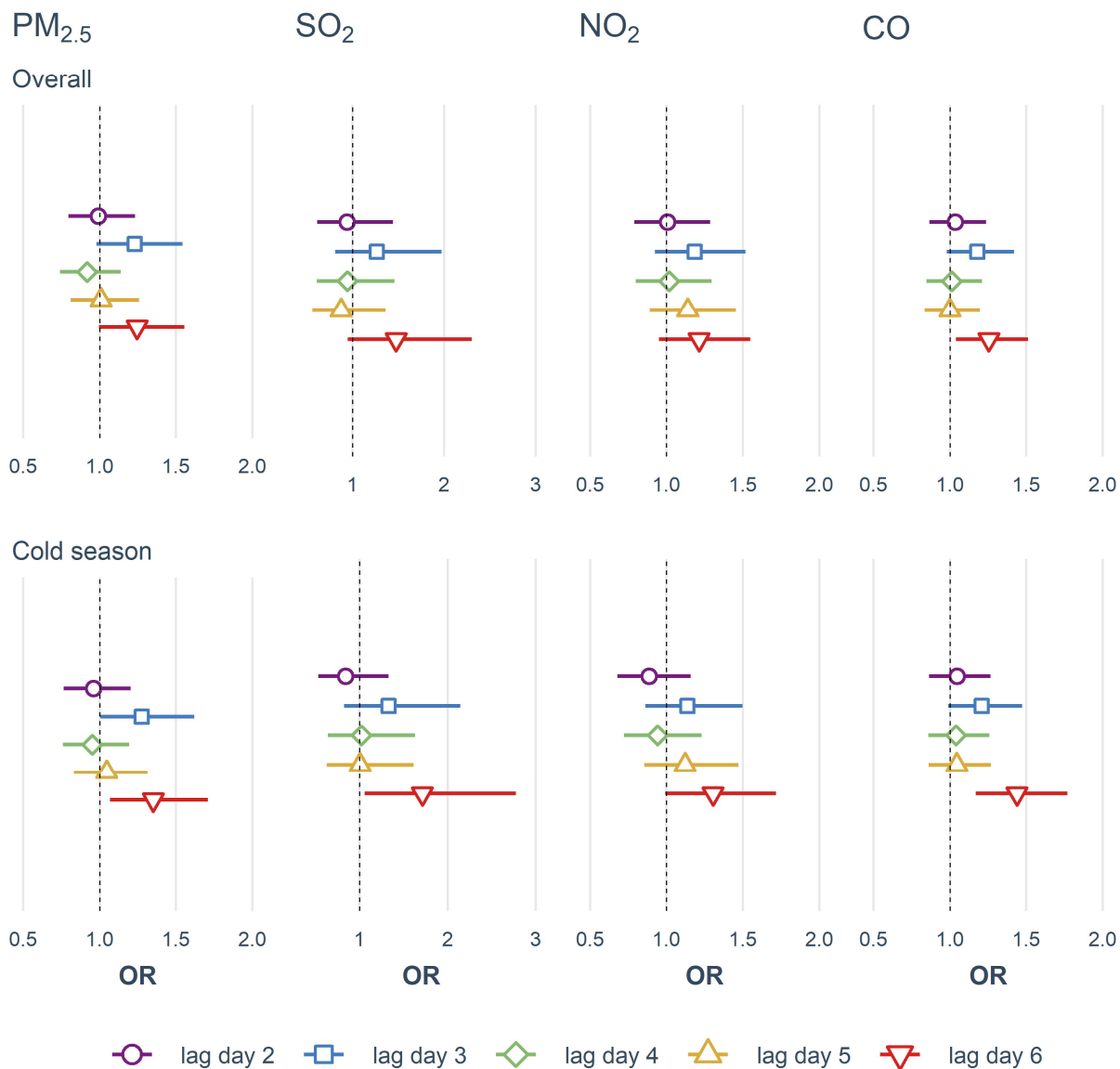
233 Table 2. Relative Odds of Stillbirth Associated with IQR Increases in Mean PM<sub>2.5</sub>, NO<sub>2</sub>, SO<sub>2</sub>, and CO  
 234 Concentration by Lag day(s)

Pollutants	Lag Days	IQR, $\mu\text{g}/\text{m}^3$	OR <sup>1</sup>	(95% CI) <sup>2</sup>	OR	(95% CI)
			<b>Overall (n = 1 088)<sup>3</sup></b>		<b>Cold season (n = 515)<sup>3</sup></b>	
<b>PM<sub>2.5</sub></b>	2	74.67	0.99	(0.8-1.23)	0.96	(0.76-1.2)
	3	77.00	1.23	(0.98-1.54)	1.28	(1-1.62)
	4	75.24	0.92	(0.74-1.14)	0.95	(0.76-1.19)
	5	74.65	1.01	(0.81-1.26)	1.05	(0.83-1.31)
	6	75.72	1.24	(0.99-1.56)	1.35	(1.07-1.71)
<b>SO<sub>2</sub></b>	2	36.40	0.94	(0.61-1.44)	0.84	(0.53-1.33)
	3	37.12	1.26	(0.81-1.97)	1.33	(0.82-2.14)
	4	35.82	0.94	(0.61-1.46)	1.02	(0.64-1.63)
	5	35.73	0.87	(0.56-1.36)	1.00	(0.63-1.61)
	6	36.32	1.47	(0.95-2.3)	1.71	(1.06-2.77)
<b>NO<sub>2</sub></b>	2	29.89	1.01	(0.79-1.29)	0.89	(0.68-1.16)
	3	30.55	1.18	(0.92-1.52)	1.14	(0.86-1.5)
	4	29.73	1.02	(0.8-1.29)	0.94	(0.72-1.23)
	5	30.12	1.14	(0.89-1.45)	1.12	(0.85-1.47)
	6	30.14	1.21	(0.95-1.55)	1.30	(0.99-1.72)
<b>CO</b>	2	561.03	1.03	(0.87-1.24)	1.05	(0.86-1.27)
	3	572.20	1.18	(0.98-1.42)	1.21	(0.99-1.47)
	4	560.32	1.01	(0.85-1.21)	1.04	(0.86-1.26)
	5	556.54	1.00	(0.83-1.19)	1.04	(0.86-1.27)
	6	571.54	1.25	(1.04-1.51)	1.44	(1.17-1.77)

<sup>1</sup>Odds Ratio

<sup>2</sup>95% Confidence Interval

<sup>3</sup>Models are adjusted for the apparent temperature of the corresponding lag day



235

236 Figure 4. Effect estimates of air pollution on stillbirth risk

237 Possible modifiers of the effect associated with stillbirth and pollutants examined in

238 stratified models (Table 3) show significant differences in odds ratios between various maternal and

239 residential characteristics. They reveal stronger associations for younger, unemployed women with

240 fewer pregnancies and women who had never given birth before. Interestingly, we also found higher

241 odds ratios for women without comorbidities and pregnancy complications. On the other hand,

242 living in a Khoroo with a larger proportion of Ger households and households without internet  
 243 connectivity and higher stove density was associated with higher relative odds of stillbirth.

244 Table 3. Relative Odds of Stillbirth Associated with IQR Increase in PM<sub>2.5</sub>, NO<sub>2</sub>, SO<sub>2</sub>, and CO Concentration  
 245 on Lag Day 6 by Level of Maternal Characteristics

Characteristic	PM <sub>2.5</sub>		SO <sub>2</sub>		NO <sub>2</sub>		CO	
	OR	(95% CI)	OR	(95% CI)	OR	(95% CI)	OR	(95% CI)
<b>Maternal age (years)</b>								
<25	1.45	(0.94-2.25)	<b>2.38</b>	<b>(1.02-5.57)</b>	1.22	(0.8-1.88)	<b>1.52</b>	<b>(1.04-2.21)</b>
25-34	1.19	(0.86-1.66)	1.25	(0.65-2.4)	1.20	(0.83-1.73)	1.21	(0.91-1.6)
>=35	1.17	(0.77-1.78)	1.20	(0.51-2.83)	1.21	(0.73-2.02)	1.15	(0.81-1.62)
<b>Maternal employment</b>								
Unemployed	<b>1.43</b>	<b>(1.01-2.03)</b>	1.89	(0.98-3.62)	<b>1.53</b>	<b>(1.06-2.2)</b>	<b>1.49</b>	<b>(1.11-1.98)</b>
Employed or Student	1.12	(0.83-1.51)	1.19	(0.64-2.2)	0.98	(0.7-1.37)	1.12	(0.87-1.43)
<b>Number of pregnancies</b>								
2 or less	<b>1.67</b>	<b>(1.19-2.34)</b>	<b>2.59</b>	<b>(1.33-5.03)</b>	<b>1.40</b>	<b>(1-1.96)</b>	<b>1.54</b>	<b>(1.15-2.04)</b>
More than 2	0.98	(0.73-1.33)	0.92	(0.51-1.68)	1.04	(0.73-1.48)	1.07	(0.84-1.38)
<b>Number of deliveries</b>								
None	<b>1.74</b>	<b>(1.2-2.52)</b>	<b>2.76</b>	<b>(1.32-5.77)</b>	1.39	(0.96-2.01)	<b>1.64</b>	<b>(1.2-2.23)</b>
1 or more	1.02	(0.77-1.36)	1.00	(0.57-1.76)	1.08	(0.78-1.49)	1.07	(0.84-1.35)
<b>Maternal comorbidity</b>								
Yes	1.13	(0.83-1.55)	1.07	(0.56-2.05)	1.13	(0.81-1.6)	1.25	(0.96-1.62)
No	<b>1.39</b>	<b>(1-1.93)</b>	<b>1.97</b>	<b>(1.05-3.7)</b>	1.23	(0.86-1.77)	1.25	(0.95-1.64)
<b>Pregnancy complication</b>								
Yes	1.12	(0.84-1.5)	1.17	(0.67-2.03)	1.07	(0.79-1.46)	1.05	(0.82-1.34)
No	1.46	(0.98-2.19)	<b>2.44</b>	<b>(1.07-5.58)</b>	<b>1.56</b>	<b>(1-2.44)</b>	<b>1.57</b>	<b>(1.11-2.23)</b>
<b>Percentage of households with internet connection</b>								
45% or less	<b>1.37</b>	<b>(1.05-1.78)</b>	<b>1.81</b>	<b>(1.1-2.97)</b>	1.29	(0.98-1.69)	<b>1.41</b>	<b>(1.13-1.77)</b>
more than 45%	0.99	(0.65-1.51)	0.53	(0.19-1.5)	0.86	(0.49-1.53)	0.94	(0.65-1.35)
<b>Percentage of Ger households</b>								
20% or less	1.10	(0.72-1.68)	0.80	(0.28-2.28)	1.04	(0.62-1.74)	0.89	(0.61-1.3)
more than 20%	<b>1.32</b>	<b>(1.01-1.72)</b>	<b>1.63</b>	<b>(1-2.68)</b>	1.25	(0.94-1.65)	<b>1.42</b>	<b>(1.14-1.77)</b>
<b>Stoves (per sq.km.)</b>								
15 stoves or less	0.93	(0.61-1.44)	0.58	(0.2-1.66)	0.81	(0.49-1.35)	0.83	(0.56-1.23)
more than 15 stoves	<b>1.39</b>	<b>(1.07-1.81)</b>	<b>1.77</b>	<b>(1.08-2.9)</b>	<b>1.37</b>	<b>(1.03-1.82)</b>	<b>1.42</b>	<b>(1.14-1.77)</b>

Estimates significant at the 0.05 significance level are **bolded**

## 246 Discussion

247 We found a substantially increased risk of stillbirth associated with IQR increases in the  
 248 mean concentrations of all examined pollutants 3 and 6 days before delivery. These associations



249 were controlled for time-varying confounders such as atmospheric temperature, relative humidity,  
250 and wind velocity in the form of apparent temperature. Under a time-stratified case-crossover  
251 design, time-invariant confounders such as individual-level maternal, fetal, and residential attributes  
252 and seasonal, monthly, and day-of-the-week time trends could not have influenced our results. Our  
253 stratified analyses showed a disproportionately higher risk for women living in low-income Ger  
254 districts than in apartments. They also indicate that younger women who have not given birth before  
255 and have no comorbidities and pregnancy complications are at increased risk of stillbirth associated  
256 with ambient air pollution.

257         The biological mechanisms underlying the effect of air pollutants on stillbirth risk have  
258 varying levels of evidence depending on the pollutant. On the one hand, there is well-established  
259 toxicity of carbon monoxide on the fetus (Penney, 1996). Two main pathways are reduction of  
260 oxygen-carrying capacity of maternal hemoglobin by CO, which leads to oxygen shortage in fetal  
261 blood (Salam et al., 2005), and higher affinity of fetal hemoglobin for binding CO than adult  
262 hemoglobin that further compromises the oxygen delivery (Sangalli et al., 2003). On the other, we  
263 have scarce evidence of how exactly NO<sub>2</sub> and SO<sub>2</sub> might affect fetal death. There is evidence for  
264 crossing the placental barrier, affecting cell division, and activating hypoxic injury or immune-  
265 mediated damage (Al-Gubory et al., 2010; Proietti et al., 2013). There have been several hypotheses  
266 regarding their effect on a fetus for particulate matter. Major ones are a compromise of maternal  
267 blood and nutrients delivery, DNA damage and inflammation via contribution to oxidative stress,  
268 and lowering the transplacental function by increasing the concentration of DNA adducts (Perera et  
269 al., 1992). Timing of exposure to particulate matter along fetal developmental periods may also lead  
270 to varying effects due to differences in physiologic maturity of the fetus (Perera et al., 1999).

271 While numerous studies have examined the association between air pollutants and adverse  
272 pregnancy outcomes, relatively few investigated the effect on stillbirth. Even fewer studies focused  
273 on the acute effects of air pollution on stillbirth risk. A time-series study in Sao Paulo, Brazil,  
274 examined the association between daily counts of intrauterine mortality (gestational duration of >28  
275 weeks) and ecological measures of daily ambient air pollutants. They found increased short-term  
276 (less than five days) risk of intrauterine mortality for NO<sub>2</sub> ( $\beta=0.0013/\mu\text{g}/\text{m}^3$ ;  $p<0.01$ ), SO<sub>2</sub>  
277 ( $\beta=0.0005/\mu\text{g}/\text{m}^3$ ;  $p<0.10$ ) and CO ( $\beta=0.0223/\text{ppm}$ ;  $p<0.10$ ) using Poisson regression adjusted for  
278 season and weather (Pereira et al., 1998). This study, to our knowledge, is the first to look at the  
279 short-term effect of air pollutants on stillbirth risk and remains an essential part of the evidence base  
280 despite its limitations due to ecological design and imperfect case definition.

281 A study by Faiz et al. utilized time-stratified referent selection in a case-crossover design to  
282 look at the triggering effect of ambient air pollution on stillbirth in New Jersey, US (Faiz et al.,  
283 2013). They found significantly increased relative odds of stillbirth on lag day 2 per IQR increase in  
284 mean concentrations of CO (OR = 1.20, 95% CI = 1.05-1.37) and SO<sub>2</sub> (OR = 1.11, 95% CI = 1.02-  
285 1.22) and increased odds ratios for IQR increases in NO<sub>2</sub> (OR = 1.11, 95% CI = 0.97–1.26) and  
286 PM<sub>2.5</sub> (OR = 1.07, 95% CI = 0.93–1.22) levels. Similar increases in stillbirth risk were also observed  
287 for cumulative averages on days 2 to 6, and they did not observe effect modifications by maternal  
288 characteristics. The current study tries to emulate the above study conceptually to investigate the  
289 acute effect of ambient air pollutants on the risk of stillbirth. Our findings agree on increased short-  
290 term risk of stillbirth associated with IQR increase in the pollutants. They, however, differ in terms  
291 of which lag day has the highest risk and the magnitude of the risk. We found increased relative odds  
292 of stillbirth on lag days 3 and 6 for all pollutants, and the ORs were amplified when restricted to the  
293 cold season only. Unfortunately, there was almost no overlap between individual maternal risk  
294 factors between the studies to compare stratified analyses.

295 Three recent studies on the short-term association between stillbirth and ambient pollutants  
296 have been published. Mendola et al. used retrospective cohort data across 12 clinical centers in the  
297 US. They investigated the acute and chronic effects of air pollutants on the risk of stillbirth at the  
298 community level using Poisson regression with generalized estimating equations. They observed that  
299 acute exposure to ozone was associated with a 13-22% increased risk of stillbirth on lag days 2, 3,  
300 and 5-7 (Mendola et al., 2017). A time-series study in Ahvaz, Iran, by Dastoorpoor et al. used a  
301 distributed lag non-linear model estimated by quasi-Poisson regression to investigate the acute  
302 effects of air pollution (per 10-unit increase) on stillbirth and other adverse pregnancy outcomes.  
303 They looked at single-day lags of 1 and 2 and cumulative lag days 0 through 14 and did not find an  
304 increased effect estimate, but rather an inverse association with ozone on lag day 1 and 2 and with  
305 SO<sub>2</sub> on lag day 2 (Dastoorpoor et al., 2018). A recent addition to the evidence base on the short-  
306 term effects of ambient air pollution on stillbirth risk came from California. They used population-  
307 weighted centroids to link ground monitoring station data to the maternal residential zip code to  
308 assign air pollution exposure. Similar to New Jersey and our study, the authors utilized a time-  
309 stratified case-crossover design to estimate the short-term effects and found an increased risk of  
310 stillbirth per IQR increase in SO<sub>2</sub>, O<sub>3</sub>, and PM<sub>10-2.5</sub> concentrations (Sarovar et al., 2020).

311 Our findings are broadly consistent with previous literature on the topic; however, we must  
312 acknowledge several differences. The magnitude of the effect that we observed is substantially larger  
313 than the studies mentioned above. We believe this is primarily because of the large IQR stemming  
314 from high air pollution levels during cold months in UB. Unfortunately, this change in daily air  
315 quality over days and weeks during winter in UB is in line with the significant health and mortality  
316 burden of air pollution found in previous studies. Allen et al. estimated conservatively that 1 in 10  
317 deaths in UB are due to air pollution using land-use regression models and mobile monitoring to  
318 assess exposure (Allen et al., 2013). At the same time, researchers from the National Center for

319 Maternal and Child Health (NCMCH) found a strikingly high seasonal correlation between  
320 miscarriage and air pollution levels in the city (Enkhmaa et al., 2014).

321 The main improvement of our study over previous literature comes from our individual-  
322 level exposure assessment with fine spatial and temporal resolution. The main challenge in  
323 conducting air pollution epidemiology studies in low to middle income countries is the difficulty of  
324 accurately assessing exposure due to inadequate and unreliable measurements provided by scarce  
325 pollutant monitoring stations. Our previous work demonstrated the feasibility and advantages of  
326 utilizing machine learning algorithms to capture complex relationships between air pollution and  
327 other meteorological, land use, and population-level variables in a low-resource setting with sparse  
328 monitoring capacity (Enebish et al., 2020). This work allowed us to assign air pollution exposure to  
329 every subject in our study based on their residential area and relevant days. Although exposure  
330 measurement errors are unavoidable when we try to estimate personal exposure using modeling  
331 based on ambient air pollution levels, we believe this approach has significantly improved over  
332 previous methods of assigning exposures. But the error will result in non-differential  
333 misclassification, likely leading to a bias towards the null. We should also mention that we evaluated  
334 various modifiable maternal risk factors that previous studies have not been able to investigate. This  
335 opportunity is mainly thanks to the manual data collection process from birth records and stillbirth  
336 form information provided by the Surveillance Department of NCMCH. The limitations of our  
337 current study include exposure assessment at the residential area (Khoroo) level, the uncertain  
338 estimate for the date of fetal death based on the delivery date, and possible residual confounding due  
339 to imperfect measurement of apparent temperature.

340 In conclusion, we found a considerably increased risk of stillbirth on days 3 and 6 before  
341 delivery for every IQR increase in mean concentrations of PM<sub>2.5</sub>, SO<sub>2</sub>, NO<sub>2</sub>, and CO. This

342 association was strengthened when we restricted the analysis to only the cold season. Future studies  
343 with finer spatial and temporal exposure, time-varying confounder assessment, and better case  
344 identification are necessary to elucidate further the underlying mechanism of the markedly adverse  
345 effects of air pollution on stillbirth.

## 346 References

- 347 Al-Gubory, K. H., Fowler, P. A., & Garrel, C. (2010). The roles of cellular reactive oxygen species,  
348 oxidative stress and antioxidants in pregnancy outcomes. *International Journal of Biochemistry and*  
349 *Cell Biology*, 42(10), 1634–1650. <https://doi.org/10.1016/j.biocel.2010.06.001>
- 350 Allen, R. W., Gombojav, E., Barkhasragchaa, B., Byambaa, T., Lkhasuren, O., Amram, O., Takaro,  
351 T. K., & Janes, C. R. (2013). An assessment of air pollution and its attributable mortality in  
352 Ulaanbaatar, Mongolia. *Air Quality, Atmosphere and Health*, 6(1), 137–150.  
353 <https://doi.org/10.1007/s11869-011-0154-3>
- 354 Anderson, G. B., Bell, M. L., & Peng, R. D. (2013). Methods to calculate the heat index as an  
355 exposure metric in environmental health research. *Environmental Health Perspectives*, 121(10),  
356 1111–1119. <https://doi.org/10/gbdvhp>
- 357 Bekkar, B., Pacheco, S., Basu, R., & DeNicola, N. (2020). Association of Air Pollution and Heat  
358 Exposure With Preterm Birth, Low Birth Weight, and Stillbirth in the US: A Systematic  
359 Review. *JAMA Network Open*, 3(6), e208243.  
360 <https://doi.org/10.1001/jamanetworkopen.2020.8243>
- 361 Chersich, M. F., Pham, M. D., Areal, A., Haghghi, M. M., Manyuchi, A., Swift, C. P., Wernecke, B.,  
362 Robinson, M., Hetem, R., Boeckmann, M., & Hajat, S. (2020). Associations between high  
363 temperatures in pregnancy and risk of preterm birth, low birth weight, and stillbirths:  
364 Systematic review and meta-analysis. *BMJ*, 371, m3811. <https://doi.org/10.1136/bmj.m3811>
- 365 Dastoorpoor, M., Idani, E., Goudarzi, G., & Khanjani, N. (2018). Acute effects of air pollution on  
366 spontaneous abortion, premature delivery, and stillbirth in Ahvaz, Iran: A time-series study.  
367 *Environmental Science and Pollution Research*, 25(6), 5447–5458.  
368 <https://doi.org/10.1007/s11356-017-0692-9>

- 369 Enebish, T., Chau, K., Jadamba, B., & Franklin, M. (2020). Predicting ambient PM2.5  
370 concentrations in Ulaanbaatar, Mongolia with machine learning approaches. *Journal of*  
371 *Exposure Science & Environmental Epidemiology*. <https://doi.org/10/gg65t7>
- 372 Enkhmaa, D., Warburton, N., Javzandulam, B., Uyanga, J., Khishigsuren, Y., Lodoysamba, S.,  
373 Enkhtur, S., & Warburton, D. (2014). Seasonal ambient air pollution correlates strongly with  
374 spontaneous abortion in Mongolia. *BMC Pregnancy and Childbirth*, 14(1), 146.  
375 <https://doi.org/10/gb8xz5>
- 376 Faiz, A. S., Rhoads, G. G., Demissie, K., Lin, Y., Kruse, L., & Rich, D. Q. (2013). Does Ambient Air  
377 Pollution Trigger Stillbirth? *Epidemiology*, 24(4), 538–544. <https://doi.org/10/f42tzs>
- 378 Fortoul, T. I., Rodriguez-Lara, V., Gonzalez-Villalva, A., Rojas-Lemus, M., Colin-Barenque, L.,  
379 Bizarro-Nevarés, P., García-Peláez, I., Ustarroz-Cano, M., López-Zepeda, S., Cervantes-  
380 Yépez, S., López-Valdez, N., Meléndez-García, N., Espinosa-Zurutuza, M., & Cano-  
381 Rodríguez, G. C.-G. and M. C. (2015). Health Effects of Metals in Particulate Matter. In  
382 *Current Air Quality Issues*. IntechOpen. <https://doi.org/10.5772/59749>
- 383 Gail, M. H., Lubin, J. H., & Rubinstein, L. V. (1981). Likelihood calculations for matched case-  
384 control studies and survival studies with tied death times. *Biometrika*, 68(3), 703–707.  
385 <https://doi.org/10/crz3fm>
- 386 Gardosi, J., Mul, T., Mongelli, M., & Fagan, D. (1998). Analysis of birthweight and gestational age in  
387 antepartum stillbirths. *British Journal of Obstetrics and Gynaecology*, 105(5), 524–530.  
388 <https://doi.org/10.1111/j.1471-0528.1998.tb10153.x>
- 389 Genest, D. R., Williams, M. A., & Greene, M. F. (1992). Estimating the time of death in stillborn  
390 fetuses: I. Histologic evaluation of fetal organs; an autopsy study of 150 stillborns. *Obstetrics*  
391 *and Gynecology*, 80(4), 575–584.

- 392 Heazell, A. E. P., Siassakos, D., Blencowe, H., Burden, C., Bhutta, Z. A., Cacciatore, J., Dang, N.,  
393 Das, J., Flenady, V., Gold, K. J., Mensah, O. K., Millum, J., Nuzum, D., O'Donoghue, K.,  
394 Redshaw, M., Rizvi, A., Roberts, T., Saraki, H. E. T., Storey, C., ... Downe, S. (2016).  
395 Stillbirths: Economic and psychosocial consequences. *The Lancet*, *387*(10018), 604–616.  
396 <https://doi.org/10/f3tsrv>
- 397 Jacobs, M., Zhang, G., Chen, S., Mullins, B., Bell, M., Jin, L., Guo, Y., Huxley, R., & Pereira, G.  
398 (2017). The association between ambient air pollution and selected adverse pregnancy  
399 outcomes in China: A systematic review. *Science of the Total Environment*, *579*, 1179–1192.  
400 <https://doi.org/10/f9p5b8>
- 401 Janes, H., Sheppard, L., & Lumley, T. (2005). Overlap bias in the case-crossover design, with  
402 application to air pollution exposures. *Statistics in Medicine*, *24*(2), 285–300.  
403 <https://doi.org/10.1002/sim.1889>
- 404 Klepac, P., Locatelli, I., Korošec, S., Künzli, N., & Kukec, A. (2018). Ambient air pollution and  
405 pregnancy outcomes: A comprehensive review and identification of environmental public  
406 health challenges. *Environmental Research*, *167*, 144–159.  
407 <https://doi.org/10.1016/j.envres.2018.07.008>
- 408 Lawn, J. E., Blencowe, H., Waiswa, P., Amouzou, A., Mathers, C., Hogan, D., Flenady, V., Frøen, J.  
409 F., Qureshi, Z. U., Calderwood, C., Shiekh, S., Jassir, F. B., You, D., McClure, E. M., Mathai,  
410 M., Cousens, S., Kinney, M. V., De Bernis, L., Heazell, A., ... Draper, E. S. (2016).  
411 Stillbirths: Rates, risk factors, and acceleration towards 2030. *The Lancet*, *387*(10018), 587–  
412 603. <https://doi.org/10/f3p2cr>
- 413 Li, X., Huang, S., Jiao, A., Yang, X., Yun, J., Wang, Y., Xue, X., Chu, Y., Liu, F., Liu, Y., Ren, M.,  
414 Chen, X., Li, N., Lu, Y., Mao, Z., Tian, L., & Xiang, H. (2017). Association between ambient  
415 fine particulate matter and preterm birth or term low birth weight: An updated systematic



- 416 review and meta-analysis. *Environmental Pollution*, 227, 596–605.
- 417 <https://doi.org/10.1016/j.envpol.2017.03.055>
- 418 Maclure, M. (1991). *The Case-Crossover Design: A Method for Studying Transient Effects on the Risk of Acute*
- 419 *Events*. 133(2), 144–153.
- 420 Mendola, P., Ha, S., Pollack, A. Z., Zhu, Y., Seeni, I., Kim, S. S., Sherman, S., & Liu, D. (2017).
- 421 Chronic and Acute Ozone Exposure in the Week Prior to Delivery Is Associated with the
- 422 Risk of Stillbirth. *International Journal of Environmental Research and Public Health*, 14(7), 731.
- 423 <https://doi.org/10.3390/ijerph14070731>
- 424 Narmandakh, L., Galymbek, K., & Tsatsral, B. (2018). *Report on 2018 Enumeration of Air Pollution*
- 425 *Sources in Ulaanbaatar*. UB Air Pollution Reduction Agency.
- 426 [http://aprd.ub.gov.mn/Media/Uploads/Tailan/%D0%A2%D0%9E%D0%9E%D0%9B%D0%9B%D0%9E%D0%93%D0%9E-](http://aprd.ub.gov.mn/Media/Uploads/Tailan/%D0%A2%D0%9E%D0%9E%D0%9B%D0%9B%D0%9E%D0%93%D0%9E-2018_%D0%A2%D0%B0%D0%B9%D0%BB%D0%B0%D0%BD_2018.12.25.pdf)
- 427 [2018\\_%D0%A2%D0%B0%D0%B9%D0%BB%D0%B0%D0%BD\\_2018.12.25.pdf](http://aprd.ub.gov.mn/Media/Uploads/Tailan/%D0%A2%D0%B0%D0%B9%D0%BB%D0%B0%D0%BD_2018.12.25.pdf)
- 428
- 429 Nelson, C. A., Tew, M., Phetteplace, G., Schwerdt, R., Maarouf, A., Osczevski, R., Bluestein, M.,
- 430 Shaykewich, J., Smarsh, D., Derby, J., & others. (2002). *6B. 2 JOINT DEVELOPMENT*
- 431 *AND IMPLEMENTATION BY THE UNITED STATES AND CANADA OF A NEW*
- 432 *WIND CHILL TEMPERATURE (WCT) INDEX*.
- 433 Padula, A. M., Tager, I. B., Carmichael, S. L., Hammond, S. K., Lurmann, F., & Shaw, G. M. (2013).
- 434 The association of ambient air pollution and traffic exposures with selected congenital
- 435 anomalies in the San Joaquin Valley of California. *American Journal of Epidemiology*, 177(10),
- 436 1074–1085. <https://doi.org/10/f4xsbq>
- 437 Pebesma, E. (2018). Simple Features for R: Standardized Support for Spatial Vector Data. *The R*
- 438 *Journal*, 10(1), 439–446. <https://doi.org/10.32614/RJ-2018-009>
- 439 Penney, D. G. (1996). *Carbon Monoxide*. CRC-Press.

- 440 Pereira, L. A. A., Loomis, D., Conceição, G. M. S., Braga, A. L. F., Arcas, R. M., Kishi, H. S., Singer,  
441 J. M., Böhm, G. M., & Saldiva, P. H. N. (1998). Association between air pollution and  
442 intrauterine mortality in Sao Paulo, Brazil. *Environmental Health Perspectives*, *106*(6), 325–329.  
443 <https://doi.org/10/bmfrpd>
- 444 Perera, F. P., Hemminki, K., Gryzbowska, E., Motykiewicz, G., Michalska, J., Santella, R. M.,  
445 Young, T.-L., Dickey, C., Brandt-Rauf, P., & DeVivo, I. (1992). Molecular and genetic  
446 damage in humans from environmental pollution in Poland. *Nature*, *360*(6401), 256.  
447 <https://doi.org/10/drqgwj>
- 448 Perera, F. P., Jedrychowski, W., Rauh, V., & Whyatt, R. M. (1999). Molecular epidemiologic research  
449 on the effects of environmental pollutants on the fetus. *Environmental Health Perspectives*, *107*  
450 *Suppl*(February), 451–460. [https://doi.org/sc271\\_5\\_1835](https://doi.org/sc271_5_1835) [pii]
- 451 Proietti, E., Roeoesli, M., Frey, U., & Latzin, P. (2013). Air Pollution During Pregnancy and  
452 Neonatal Outcome: A Review. *Journal of Aerosol Medicine and Pulmonary Drug Delivery*, *26*(1), 9–  
453 23. <https://doi.org/10.1089/jamp.2011.0932>
- 454 R Core Team. (2019). *R: A language and environment for statistical computing*. <https://www.R-project.org/>
- 455 Salam, M. T., Millstein, J., Li, Y.-F., Lurmann, F. W., Margolis, H. G., & Gilliland, F. D. (2005).  
456 Birth outcomes and prenatal exposure to ozone, carbon monoxide, and particulate matter:  
457 Results from the Children’s Health Study. *Environmental Health Perspectives*, *113*(11), 1638–  
458 1644. <https://doi.org/10/b5rt9n>
- 459 Sangalli, M., Mclean, A., Peek, M., Rivory, L., & Le Couteur, D. G. (2003). Carbon monoxide  
460 disposition and permeability-surface area product in the foetal circulation of the perfused  
461 term human placenta. *Placenta*, *24*(1), 8–11. <https://doi.org/10/cppw9r>

- 462 Sapkota, A., Chelikowsky, A. P., Nachman, K. E., Cohen, A. J., & Ritz, B. (2012). Exposure to  
463 particulate matter and adverse birth outcomes: A comprehensive review and meta-analysis.  
464 *Air Quality, Atmosphere and Health*, 5(4), 369–381. <https://doi.org/10/bjdd2c>
- 465 Sarovar, V., Malig, B. J., & Basu, R. (2020). A case-crossover study of short-term air pollution  
466 exposure and the risk of stillbirth in California, 1999–2009. *Environmental Research*, 191,  
467 110103. <https://doi.org/10.1016/j.envres.2020.110103>
- 468 Siddika, N., Balogun, H. A., Amegah, A. K., & Jaakkola, J. J. K. (2016). Prenatal ambient air  
469 pollution exposure and the risk of stillbirth: Systematic review and meta-analysis of the  
470 empirical evidence. *Occup Environ Med*, 73, 573–581. <https://doi.org/10/gfvdm4>
- 471 Stieb, D. M., Chen, L., Eshoul, M., & Judek, S. (2012). Ambient air pollution, birth weight and  
472 preterm birth: A systematic review and meta-analysis. *Environmental Research*, 117, 100–111.  
473 <https://doi.org/10.1016/j.envres.2012.05.007>
- 474 Tavares Da Silva, F., Gonik, B., McMillan, M., Keech, C., Dellicour, S., Bhange, S., Tila, M., Harper,  
475 D. M., Woods, C., Kawai, A. T., Kochhar, S., & Munoz, F. M. (2016). Stillbirth: Case  
476 definition and guidelines for data collection, analysis, and presentation of maternal  
477 immunization safety data. *Vaccine*, 34(49), 6057–6068. <https://doi.org/10/ggp5qk>
- 478 Therneau, T. M., & Grambsch, P. M. (2000). The Cox Model. In T. M. Therneau & P. M.  
479 Grambsch (Eds.), *Modeling Survival Data: Extending the Cox Model* (pp. 39–77). Springer.  
480 [https://doi.org/10.1007/978-1-4757-3294-8\\_3](https://doi.org/10.1007/978-1-4757-3294-8_3)
- 481 United Nations. (2015a). The Millennium Development Goals Report. *United Nations*, 72.  
482 <https://doi.org/978-92-1-101320-7>
- 483 United Nations. (2015b). Transforming our world: The 2030 Agenda for Sustainable Development.  
484 *General Assembly 70 Session, 16301*(October), 1–35. [https://doi.org/10.1007/s13398-014-](https://doi.org/10.1007/s13398-014-0173-7.2)  
485 [0173-7.2](https://doi.org/10.1007/s13398-014-0173-7.2)

486 van den Hooven, E. H., Pierik, F. H., de Kluizenaar, Y., Hofman, A., van Ratingen, S. W., Zandveld,  
487 P. Y. J., Russcher, H., Lindemans, J., Miedema, H. M. E., Steegers, E. A. P., & Jaddoe, V. W.  
488 V. (2012). Air pollution exposure and markers of placental growth and function: The  
489 Generation R Study. *Environmental Health Perspectives*, *120*(12), 1753–1759.  
490 <https://doi.org/10/gbb5vr>

491 Vrijheid, M., Martinez, D., Manzanares, S., Dadvand, P., Schembari, A., Rankin, J., &  
492 Nieuwenhuijsen, M. (2011). Ambient air pollution and risk of congenital anomalies: A  
493 systematic review and meta-analysis. *Environmental Health Perspectives*, *119*(5), 598–606.  
494 <https://doi.org/10/fb2vcd>

495 Wickham, H., Averick, M., Bryan, J., Chang, W., McGowan, L. D., François, R., Grolemund, G.,  
496 Hayes, A., Henry, L., Hester, J., Kuhn, M., Pedersen, T. L., Miller, E., Bache, S. M., Müller,  
497 K., Ooms, J., Robinson, D., Seidel, D. P., Spinu, V., ... Yutani, H. (2019). Welcome to the  
498 tidyverse. *Journal of Open Source Software*, *4*(43), 1686. <https://doi.org/10/ggddkj>

499 Zhang, H., Zhang, X., Wang, Q., Xu, Y., Feng, Y., Yu, Z., & Huang, C. (2021). Ambient air  
500 pollution and stillbirth: An updated systematic review and meta-analysis of epidemiological  
501 studies. *Environmental Pollution*, *278*, 116752. <https://doi.org/10.1016/j.envpol.2021.116752>  
502