

# 1 **Analytical Sensitivity of the SalivaDirect™ Assay on the Liberty16 for** 2 **detecting SARS-CoV-2 B.1.1.529 (“Omicron”)**

3 Yen Pei Tan<sup>1,\*</sup>, Mila Al-Halbouni<sup>1</sup>, Ching-Huan Chen<sup>1</sup>, David B. Hirst<sup>1</sup>, Paul J.  
4 Pickering<sup>1</sup>

5 <sup>1</sup> Ubiquitome Limited, 1/234A Bush Road, Rosedale, Auckland, New Zealand

6 \*Corresponding author’s e-mail: [e.tan@ubiquitomebio.com](mailto:e.tan@ubiquitomebio.com)

7  
8 **Keywords**

9 SARS-CoV-2; Omicron variant; SalivaDirect; Saliva Testing; Liberty16

## 10 11 **Abstract**

12 The newly emerged Omicron variant of SARS-CoV-2 has numerous mutations that  
13 are not found in other variants of concern (VOCs). Despite acquiring extended  
14 functions in adapting to the host-cell environment, the viral genetic variation exerts a  
15 potential negative impact on a molecular test, which in turn, compromises public health  
16 and safety. The Liberty16 has been clinically validated as a flexible and accessible  
17 device system for running the affordable SalivaDirect™ real time PCR detection assay  
18 for SARS-CoV-2 especially in low resource settings. Preliminary, based on in-silico  
19 sequence analysis, we found that Omicron’s mutation at position 28,311 overlaps with  
20 the CDC 2019-nCoV\_N1 probe binding region. In order to verify the performance of  
21 CDC 2019-nCoV-N1 primers-probe set in detecting the Omicron variant of SARS-  
22 CoV-2, plasmids containing Wuhan/WH01/2019 (wild-type) and B.1.1.529 (Omicron)  
23 sequences were serially diluted and subsequently directed for SalivaDirect™ RT-  
24 qPCR detection on Liberty16 using commercially procured reagents. Our findings  
25 provide analytical support for reports that the mutations in the Omicron variant have  
26 little or no impact on SalivaDirect™ assay in terms of amplification efficiency and  
27 detection sensitivity using either standard and the recently reported fast Liberty16  
28 SalivaDirect™ thermal cycling protocols.

## 29 30 **Introduction**

31 The first known confirmed B.1.1.529 infection was from a specimen collected on 9  
32 November 2021. Based on the evidence presented indicative of a detrimental change  
33 in COVID-19 epidemiology and the rapid rise of infections in South Africa, World

34 Health Organization (WHO) has immediately designated B.1.1.529 as a variant of  
35 concern (VOC), named Omicron (Figure 1A) (WHO, 2021). Since then, Omicron has  
36 spread rapidly through the world and caused the global case count to exceed 1 million  
37 daily cases (Singhal, 2022; Taylor, 2022).

38

39 The Omicron variant possesses a large number of new mutations which have not been  
40 observed in other strains (Table 1) (Hadfield et al., 2018). Most worrying, over two-  
41 thirds of these mutations were found on its spike protein. Like other coronaviruses, the  
42 spike protein of SARS-CoV-2 is well recognized as a key component to initiate binding  
43 with the host-cell angiotensin-converting enzyme 2 (ACE2) and establish an infection  
44 (Zhou et al., 2020). Changes on the Omicron's spike protein are particularly relevant  
45 to increase its affinity for ACE2 receptor and impact host immunity recognition  
46 (Cameroni et al., 2021; Redd et al., 2021), though the detailed mechanisms regarding  
47 viral pathogenicity and transmissibility remain largely unclear.

48

49 Apart from that, the presence of genetic variation in the Omicron variant exerts a  
50 potential negative impact on molecular tests which were designed based on the origin  
51 sequence. For example, Omicron is highly associated with S-gene target failure  
52 (SGTF) on the Taqpath RT-PCR test (Torjesen, 2021). Also, according to FDA's  
53 analysis to date, a single target test developed by Meridian Bioscience, Inc. is already  
54 known to fail to detect the SARS-CoV-2 Omicron variant. We found that Omicron's  
55 mutation at position 28,311 overlaps with the CDC 2019-nCoV\_N1 probe binding  
56 region (Figure 1B). Viral detection using the SalivaDirect™ protocol is solely reliant on  
57 the N1 primer-probe (Vogels et al., 2021), and thus, a mutation in this region is  
58 potentially impacting on the assay's sensitivity.

59

60 In the presented study, we aimed to assess the impact of the C28311T mutation on  
61 analytical PCR performance with the Liberty16 device using the SalivaDirect™  
62 protocol and to verify the assay's sensitivity in detecting the Omicron variant.

63

## 64 **Materials and Methods**

### 65 **Assay's Sensitivity in Detecting SARS-CoV-2 Wuhan/WH01/2019 and B.1.1.529**

66 The partial N gene sequences of SARS-CoV-2 Wuhan/WH01/2019 (wild-type) and  
67 B.1.1.529 (Omicron) were generated and cloned into pUC57 at EcoRV/BamHI site  
68 (Genscript Biotech Corporation). These plasmids were used to prepare serially diluted  
69 analytes for subsequent RT-qPCR detection accordingly to a single-plex version of the  
70 SalivaDirect™ protocol run on the Liberty16 System (Yolda-Carr et al., 2022) by using  
71 FAM-labelled CDC 2019-nCoV-N1 primers-probe set [Integrated DNA Technologies  
72 2019-nCoV RUO Kit (10006713)] and New England Biolabs Luna Probe One-Step  
73 RT-qPCR Mix with UDG (M3019). Additionally, both the standard (Vogels et al., 2021)  
74 (95°C, 10s; 55°C, 30s) and fast cycling protocols (Yolda-Carr et al., 2022) (95°C, 2s;  
75 55°C, 5s) were tested.

76

### 77 **Robustness Test**

78 The limit of detection (LoD) for the Liberty16 system was previously confirmed at 12  
79 copies/μL (Yolda-Carr et al., 2022). In the presented study, 2x LoD (24 copies/μL) of  
80 plasmid DNA were used for a robustness study. Detection sensitivity was evaluated  
81 with 20 replicates per condition.

82

### 83 **Statistical Analysis**

84 The statistical analysis was conducted with a statistics computer software, GraphPad  
85 Prism 9.3.1. Differences between the standard and fast cycling protocols were  
86 assessed by testing slope differences and Bland-Altman plot.

87

## 88 **Results**

### 89 **The CDC 2019-nCoV-N1 primers-probe set can detect the Omicron N1 target** 90 **despite the C28311T mutation.**

91 Plasmids containing Wuhan/WH01/2019 (wild-type) and B.1.1.529 (Omicron)  
92 sequences were serially diluted into 6-log series, from approximately  $5 \times 10^5$  to 5  
93 copies/μL, and subsequently directed for SalivaDirect™ RT-qPCR detection using  
94 commercially procured materials. As shown in Figure 2A, the N1 targets were able to  
95 be detected across the 6-log dilution series of the mutant and wild-type plasmid DNA.  
96 Comparative analysis of these two amplification plots showed no significant difference  
97 between the slopes ( $P = 0.7963$ ).

98

99 **Omicron's N gene can be efficiently detected by using either SalivaDirect™**  
100 **standard or fast cycling protocols on Liberty16.**

101

102 Next, to assess the agreement between SalivaDirect™ standard protocol and the most  
103 recent updated fast cycling protocol on Liberty16, a preliminary study using duplicate  
104 samples across a 5-log dilution series (from approximately  $3 \times 10^5$  to 30 copies/ $\mu\text{L}$ ) and  
105 a considerably low DNA template concentration ( $\sim 3$  copies/ $\mu\text{L}$ ) was conducted. The  
106 same samples were run in parallel on Liberty16 devices with different thermal cycling  
107 protocols. As expected, the N1 targets were able to be detected across 5-log dilution  
108 series of the mutant and wild-type plasmid DNA using either of the two protocols with  
109 no significant difference in amplification (Figure 2B and 2C). Remarkably, comparison  
110 analysis showed no significant difference between these two protocols in detecting  
111 Omicron's N1 gene (Figure 2D). The data points plotted in the quantile-quantile plot  
112 (QQ plot) showed approximately on a straight line, indicating a high positive correlation  
113 (Figure 2E). And statistically, high correlation coefficient ( $R^2 = 0.9458$ ) was found  
114 between these two protocols in detecting either wild-type or Omicron variant of SARS-  
115 CoV-2 (with  $P < 0.0001$ ). Hence, we concluded that both protocols worked comparably  
116 well in detecting the Omicron variant sequence of SARS-CoV-2.

117

118

119 **The LoD of Omicron detection is comparable to SARS-CoV-2 first isolate**  
120 **Wuhan/WH01/2019.**

121

122 The C28311T mutation did not affect the SalivaDirect™ assay's sensitivity as 20 out  
123 of 20 reactions with  $2 \times \text{LoD}$  (24 copies/ $\mu\text{L}$ ) were detected for both the wild-type and  
124 mutant plasmid DNA (Figure 2E). To further assess the agreement, the Bland-Altman  
125 plot was used to assess the existence of a significant bias between these two variants  
126 (Figure 2F). As shown, 19/20 of the data points are within 95% limits of agreement.  
127 Notably, the only disagreement was caused by an outlier data point testing on wild-  
128 type plasmid DNA (Figure 2E and 2F).

129

130

131 **Conclusions**

132 Based on the presented qualitative and quantitative analysis, we conclude that the  
133 Omicron C28311T mutation has little or no impact on viral detection using  
134 SalivaDirect™ assay. Our findings are similar to recent independent studies (Bei et al.,  
135 2021). In addition, our data further confirms that the SalivaDirect™ assay works  
136 comparably well using either standard or fast thermal cycling protocols in detecting the  
137 Omicron variant sequence. As recently reported, the fast protocol takes just under one  
138 hour and is expected to increase sample throughput by more than 60% (Yolda-Carr et  
139 al., 2022). This analytical sensitivity study supports the use of the Liberty16 device  
140 system with SalivaDirect™ to further facilitate timely access to on-demand screening  
141 for infectious respiratory diseases especially within low resource settings.

142

### 143 **Acknowledgement**

144 We thank Dr Anne Wylie for her review of this manuscript and Anne and the  
145 SalivaDirect™ team for their continued support for SARS-CoV-2 accessible testing  
146 solutions for low resource settings.

147

### 148 **Competing Interests**

149 The authors are employees of, and received funding from, Ubiquitome Limited, the  
150 manufacturer of Liberty 16 described in the paper. The authors have no other relevant  
151 affiliations or financial involvement with any organization or entity with a financial  
152 interest in or financial conflict with the subject matter or materials discussed in the  
153 manuscript apart from those disclosed.

154

155 **References:**

- 156 1. World Health Organization. (2021). Classification of Omicron (B.1.1.529): SARS-CoV-2  
157 Variant of Concern.
- 158 2. Bei, Y., Vrtis, K.B., Borgaro, J.G., Langhorst, B.W., and Nichols, N.M. (2021). The  
159 Omicron variant mutation at position 28,311 in the SARS-CoV-2 N gene does not  
160 perturb CDC N1 target detection. medRxiv, 2021.2012.2016.21267734.
- 161 3. Cameroni, E., Bowen, J.E., Rosen, L.E., Saliba, C., Zepeda, S.K., Culap, K., Pinto, D.,  
162 VanBlargan, L.A., De Marco, A., di Iulio, J., *et al.* (2021). Broadly neutralizing antibodies  
163 overcome SARS-CoV-2 Omicron antigenic shift. Nature.
- 164 4. Hadfield, J., Megill, C., Bell, S.M., Huddleston, J., Potter, B., Callender, C., Sagulenko,  
165 P., Bedford, T., and Neher, R.A. (2018). Nextstrain: real-time tracking of pathogen  
166 evolution. *Bioinformatics* 34, 4121-4123.
- 167 5. Redd, A.D., Nardin, A., Kared, H., Bloch, E.M., Abel, B., Pekosz, A., Laeyendecker, O.,  
168 Fehlings, M., Quinn, T.C., and Tobian, A.A. (2021). Minimal cross-over between  
169 mutations associated with Omicron variant of SARS-CoV-2 and CD8+ T cell epitopes  
170 identified in COVID-19 convalescent individuals. bioRxiv.
- 171 6. Singhal, T. (2022). The Emergence of Omicron: Challenging Times Are Here Again!  
172 *Indian J Pediatr.*
- 173 7. Taylor, L. (2022). Covid-19: Omicron drives weekly record high in global infections.  
174 *BMJ* 376, o66.
- 175 8. Torjesen, I. (2021). Covid-19: Omicron may be more transmissible than other variants  
176 and partly resistant to existing vaccines, scientists fear. *BMJ* 375, n2943.
- 177 9. Vogels, C.B.F., Watkins, A.E., Harden, C.A., Brackney, D.E., Shafer, J., Wang, J.,  
178 Caraballo, C., Kalinich, C.C., Ott, I.M., Fauver, J.R., *et al.* (2021). SalivaDirect: A  
179 simplified and flexible platform to enhance SARS-CoV-2 testing capacity. *Med (N Y)* 2,  
180 263-280 e266.
- 181 10. Yolda-Carr, D., Thammavongsa, D.A., Vega, N., Turner, S.J., Pickering, P.J., and Wyllie,  
182 A.L. (2022). Evaluation of the Liberty16 Mobile Real Time PCR Device for Use With the  
183 SalivaDirect Assay for SARS-CoV-2 Testing. *Frontiers in Cellular and Infection*  
184 *Microbiology* 11.
- 185 11. Zhou, P., Yang, X.L., Wang, X.G., Hu, B., Zhang, L., Zhang, W., Si, H.R., Zhu, Y., Li, B.,  
186 Huang, C.L., *et al.* (2020). A pneumonia outbreak associated with a new coronavirus  
187 of probable bat origin. *Nature* 579, 270-273.

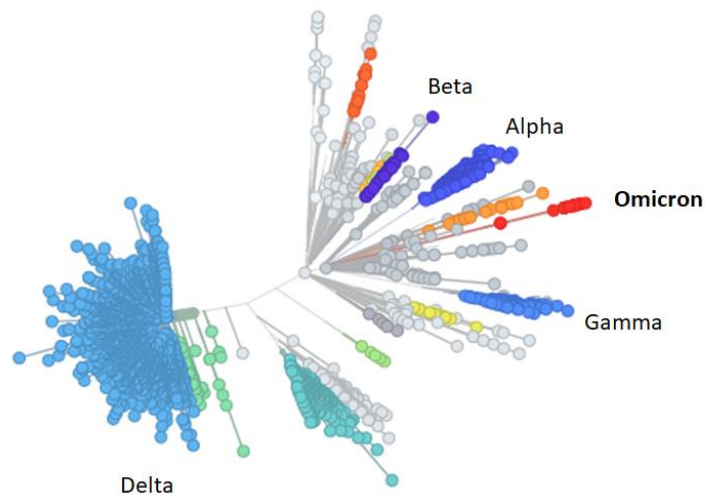
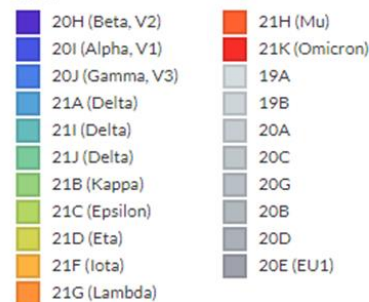
188

## Figures

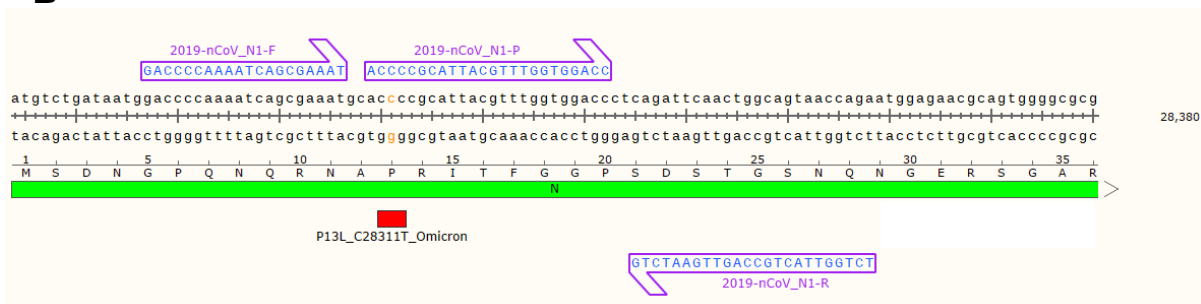
**A**

Phylogeny

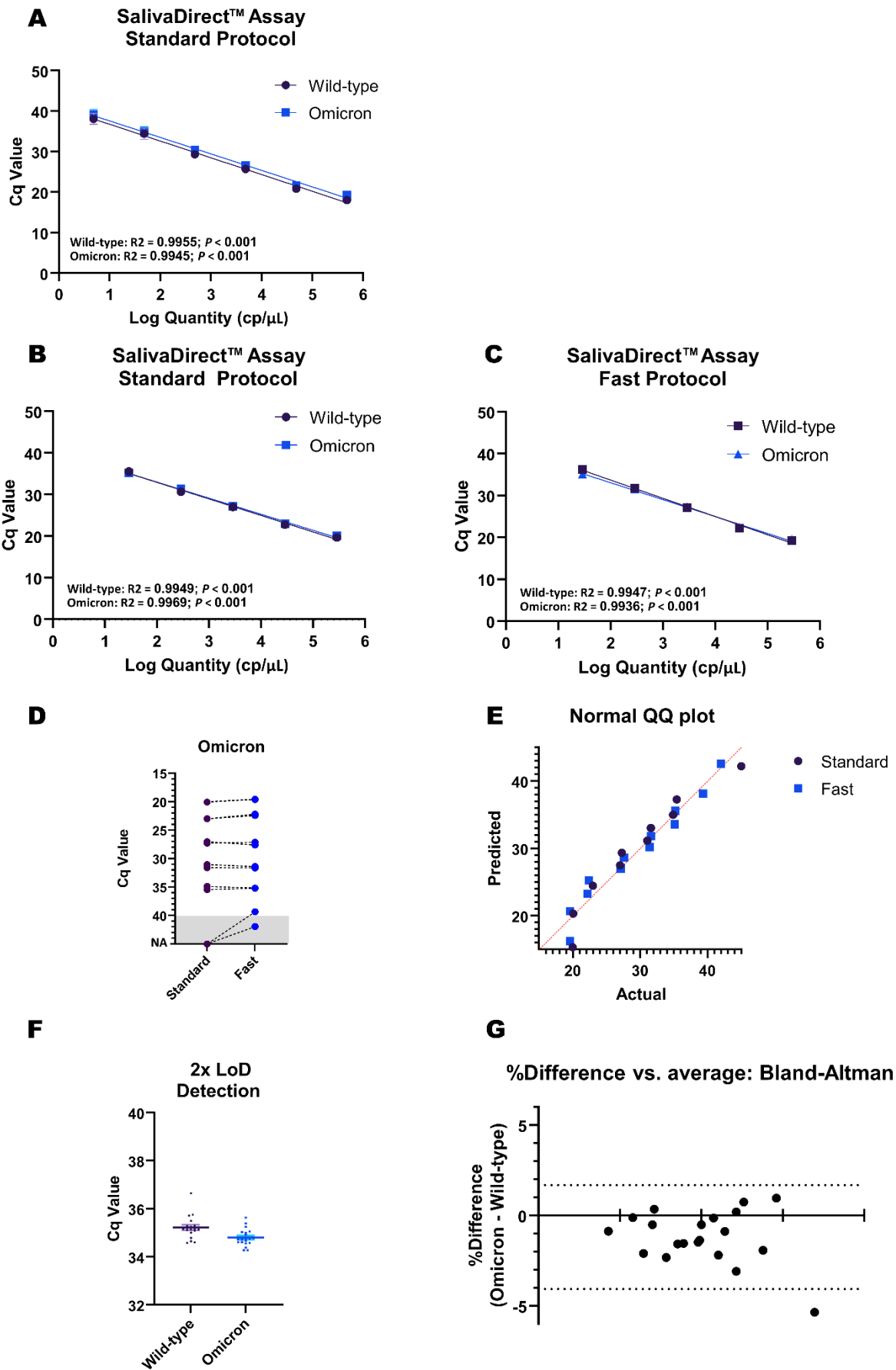
Clade ^



**B**



**Figure 1. The emergence of Omicron variant and its particular mutation site in 2019-nCoV-N1 probe binding region.** A) The Omicron variant and other major or previous variants of concern of SARS-CoV-2 depicted in a tree scaled radially by genetic distance, derived from Nextstrain on 7 December 2021; B) Partial N gene sequences of SAR-CoV-2 isolate Wuhan/WH01/2019 and the binding regions of N1 primers and probe. The mutation site, amino acid P13L or nucleotide base C28311T, of Omicron variant is highlighted in red.





**Figure 2. The SalivaDirect™ assay's sensitivity in detecting wild-type SARS-CoV-2 and Omicron variant.** A-B) Linearity performance of SalivaDirect™ assay in detecting wild-type SARS-CoV-2 and Omicron variant using standard cycling protocol; C) Linearity performance of SalivaDirect™ assay in detecting wild-type SARS-CoV-2 and Omicron variant using fast cycling protocol; D) Comparison of the standard SalivaDirect™ RT-qPCR and updated fast cycling protocols on Omicron's N1 detection; E) QQ plot of the results obtained by two different cycling protocols; F) Robustness test on 2x LoD (n = 20); G) Bland-Altman plot: The agreement between wild-type and Omicron detection; Solid horizontal line shows the mean difference, dotted line shows the 95 % confidence interval of the mean difference.

## Tables

<b>Gene</b>	<b>Mutations</b>
ORF1a	K856R, V1887I, S2083-, L2084I, A2710T, T3255I, P3395H, L3674-, S3675-, G3676-, I3758V
ORF1b	P314L, I1566V
S	A67V, H69-, V70-, T95I, G142-, V143-, Y144-, Y145D, N211-, L212I, G339D, S371L, S373P, S375F, K417N, N440K, G446S, S477N, T478K, E484A, Q493R, G496S, Q498R, N501Y, Y505H, T547K, D614G, H655Y, N679K, P681H, N764K, D796Y, N856K, Q954H, N969K, L981F
E	T9I
M	D3G, Q19E, A63T
N	P13L, E31-, R32-, S33-, R203K, G204R
ORF9b	P10S, E27-, N28-, A29-

**Table 1. The mutation sites of Omicron variant.**