

1 Title

2 Class 1 integrons in clinical and swine industry isolates of *Salmonella* Typhimurium from  
3 Colombia, dating 1997 to 2017.

4 Short title:

5 Class 1 integrons in *Salmonella* Typhimurium from Colombia.

6 Authors

7 Nancy Yaneth Flórez-Delgado<sup>1,5</sup>, Elizabeth Noelia Ubillus<sup>1</sup>, Blanca Perez-Sepulveda<sup>6</sup>,  
8 Eyda Lizeth Ospina-Ríos<sup>1</sup>, Ana Karina Carrascal-Camacho<sup>7</sup>, Iliana C Chamorro-Tobar<sup>7</sup>,  
9 Lucy Angeline Montaña<sup>1</sup>, Yan Li<sup>6</sup>, Silvana Zapata-Bedoya<sup>8</sup>, Jay C.D. Hinton<sup>6</sup>, José Miguel  
10 Villarreal<sup>3,4</sup>, Magdalena Wiesner<sup>1\*</sup>

11 <sup>1</sup> Grupo de Microbiología, Instituto Nacional de Salud, Avenida calle 26 No. 51-20 - Zona 6  
12 CAN. Bogotá, D.C., Colombia.

13 <sup>3</sup> Departamento de Química, Facultad de Ciencias, Universidad Nacional de Colombia,  
14 Carrera 45 # 26-85, Edif. Uriel Gutiérrez, Bogotá D.C., Colombia.

15 <sup>4</sup> Grupo de Investigación en Ciencias Biológicas y Químicas, Facultad de Ciencias,  
16 Universidad Antonio Nariño, Calle 58a # 37 – 94, Bogotá, D.C., Colombia.

17 <sup>5</sup> Doctorado en Ciencias de la Salud, Facultad de Medicina, Universidad Antonio Nariño,  
18 Calle 58a # 37 – 94, Bogotá, D.C., Colombia.

19 <sup>6</sup> Institute of Infection, Veterinary and Ecological Sciences, University of Liverpool,  
20 Biosciences Building, Liverpool, L69 7ZB, United Kingdom.

21 <sup>7</sup> Laboratorio de Microbiología de Alimentos, Semillero de Inocuidad Alimentaria, Grupo de  
22 Biotecnología Ambiental e Industrial, Pontificia Universidad Javeriana, Carrera 7 No. 40 –  
23 62, Bogotá D.C., Colombia.

24 <sup>8</sup> Dirección de Investigación en Salud Pública, Instituto Nacional de Salud, Avenida calle  
25 26 No. 51-20 - Zona 6 CAN. Bogotá, D.C., Colombia.

26 \* Corresponding author: [mwiesner@ins.gov.co](mailto:mwiesner@ins.gov.co); [mawire@gmail.com](mailto:mawire@gmail.com)

27 Keywords: *Salmonella* Typhimurium, integrons, drug resistance, mobile genetic element,  
28 plasmid, Colombia.

29 **Abstract**

30 *Background.* *Salmonella enterica* subsp. *enterica* serovar Typhimurium (*S. Typhimurium*)  
31 has been linked to outbreaks of foodborne gastroenteritis disease, and the emergence of  
32 antimicrobial-resistant clones. In Colombia, laboratory surveillance of *Salmonella* spp.  
33 between 1997-2018 revealed that *S. Typhimurium* was the most ubiquitous serovar  
34 (27.57% of all *Salmonella* isolates), with increasing levels of antimicrobial resistance to  
35 several families of antibiotics. *Hypothesis.* Resistant isolates of *S. Typhimurium* recovered  
36 from clinical and swine samples carry class 1 integrons that are linked to antimicrobial  
37 resistance genes. *Aim.* Identify class 1 integrons, and investigate their association with  
38 other mobile genetic elements, and their relationship to the antimicrobial resistance of  
39 Colombian *S. Typhimurium* isolates. *Methods.* In this study, 392 clinical isolates  
40 of *S. Typhimurium* were analyzed, of which 237 were obtained from blood culture, 155  
41 from non-invasive sources and 50 isolates from swine of which 32 were obtained from a  
42 slaughterhouse, 10 from a point of sale and 8 from cutting plant. Class 1 integrons and  
43 plasmid incompatibility groups were analyzed by PCR and Whole Genome Sequencing  
44 (WGS), and the region surrounding of the integrons identified by WGS. The phylogenetic  
45 relationship was established by MLST and SNP analysis. *Results.* Overall, 39.03%  
46 (153/392) of the clinical isolates and 22% (11/50) of the swine *S. Typhimurium* isolates  
47 carried complete class 1 integrons. Twelve types of gene cassette arrays were identified,  
48 including *dftr7-aac-bla<sub>OXA-2</sub>* (Int1-Col1) as the most frequent in clinical isolates (75.2% =  
49 115/153). Clinical and swine isolates that carried class 1 integrons were resistant to up to  
50 5 and up to 3 antimicrobial families, respectively. The Int1-Col1 integron was most  
51 prevalent in stool isolates and was associated with Tn21. The most common plasmid  
52 incompatibility group was IncA/C. *Conclusions.* The widespread presence of the integron  
53 (Int1-Col1) in Colombia since 1997 was striking. We speculate that the relationship

54 between integrons, source and mobile elements favors the dispersion of antibiotic

55 resistance determinants in Colombian *S. Typhimurium* isolates.

56

57 Keywords: *Salmonella* Typhimurium, integrons, drug resistance, mobile genetic element,

58 plasmid, Colombia.

## 59 Introduction

60 *Salmonella enterica* is a widely studied pathogen with 2,659 serovars (Issenhuth-Jeanjean  
61 *et al.*, 2014). Globally in 2017, Non-typhoidal serovars have caused 50,800 deaths, and  
62 non-typhoidal invasive *Salmonella* caused 77,500 deaths (GBD 2017 Non-Typhoidal  
63 *Salmonella* Invasive Disease Collaborators, 2019), they are considered one of the main  
64 biological hazards that affect food safety (Organización de las Naciones Unidas para la  
65 Alimentación y la Agricultura & Organización Mundial de la Salud, 2016). Salmonellosis  
66 usually causes gastroenteritis, which can be lethal in children, the elderly, and  
67 immunosuppressed patients (Farthing *et al.*, 2013). One of the main serovars associated  
68 with this disease is *Salmonella enterica* subsp. *enterica* serovar Typhimurium (*S.*  
69 Typhimurium) (Hendriksen *et al.*, 2011), a serotype that can infect animal and human  
70 hosts (Hoelzer *et al.*, 2011; Simpson *et al.*, 2018). *S.* Typhimurium has been the second  
71 most commonly reported serotype in humans samples and was the most reported serovar  
72 isolated from cattle, pigs, pork and turkey meat in 2016 in the European Union (European  
73 Food Safety Authority & European Centre for Disease Prevention and Control, 2017).  
74 Similarly, the laboratory-based National *Salmonella* Surveillance System from US states  
75 reported *S.* Typhimurium within the top-five most frequent serovar during 1996-2011  
76 (Boore *et al.*, 2015).

77 In recent decades, the increase and dissemination of antimicrobial resistant *S.*  
78 Typhimurium strains has been reported in humans, animals and food (Kingsley *et al.*,  
79 2009; Tran-Dien *et al.*, 2018). Antimicrobial resistance is a worldwide public health  
80 problem (Hu *et al.*, 2020; World Health Organization, 2015). The acquisition of pre-  
81 existing resistance determinants is achieved through mobile genetic elements such as  
82 insertion sequences (IS), transposons (Tn) and gene cassettes/integrans. Integrans can  
83 mobilize genes between defined sites using site-specific recombination, forming a cassette

84 array that may confer multi-resistance, which allows the bacteria an adaptation capability  
85 to environmental pressures. Integron mobility has been associated with transposable  
86 elements and conjugative plasmids (Escudero *et al.*, 2015; Hall, 2012; Partridge *et al.*,  
87 2018). Mobile genetic elements that promote intra and inter-species intercellular  
88 exchanges are plasmids and integrative conjugative elements that facilitate horizontal  
89 gene transfer, promoting the acquisition and dispersal of antibiotic resistance genes  
90 (Partridge *et al.*, 2018).

91 In Colombia, *S. Typhimurium* has also been one of the most predominant serovars  
92 isolated from human samples since 1997 (Instituto Nacional de Salud, 2019; Rodríguez *et*  
93 *al.*, 2017). The presence of class 1 integrons was identified in few multidrug resistant  
94 (MDR) *S. Anatum* and *S. Typhimurium* isolates from food (O'Mahony *et al.*, 2006).  
95 However, confirmation, frequency, and distribution of Class 1 integrons in clinical and  
96 swine isolates of *S. Typhimurium* and their possible association with increased  
97 antimicrobial resistance is unknown.

98 This work aimed to identify the presence of integrons, and other mobile genetic elements  
99 such as IS and plasmids, which favor the acquisition and dispersion of antimicrobial  
100 resistance in Colombian isolates of *S. Typhimurium* of human and animal origin between  
101 1997 and 2017.

## 102 **Methods**

### 103 ***S. Typhimurium* clinical isolates**

104 *S. Typhimurium* isolates recovered from clinical samples in 21 departments and the  
105 Capital District were characterized for phenotypic and molecular methods under the acute  
106 diarrheal disease surveillance program (Instituto Nacional de Salud, 2017). *Salmonella*  
107 spp. isolates were serotype by Kauffman-White-Le Minor scheme (Grimont & Weill, 2007)

108 and the antimicrobial susceptibility profile was determined by the disc diffusion method  
109 (Kirby-Bauer) following the interpretation criteria of the Clinical & Laboratory Standards  
110 Institute (CLSI) M100-S27 (Clinical and Laboratory Standards Institute (CLSI), 2017) for  
111 tetracycline (TET), chloramphenicol (CHL), nalidixic acid (NAL), amoxicillin/clavulanic acid  
112 (AMC), aztreonam (AZT), amikacin (AMK) and streptomycin (STR). The minimum  
113 inhibitory concentration (MIC) was determined in the AutoSCAN-4 (Siemens, Germany)  
114 with the panel NC50 ampicillin (AMP), sulfamethoxazole/SXT (SXT), cefotaxime (CTX)  
115 and ceftazidime (CAZ). Isolates with resistance to 3 or more antibiotic families were  
116 defined as multidrug-resistant (MDR) (Magiorakos *et al.*, 2012; Rodríguez *et al.*, 2017).

117 Of this surveillance 392 clinical isolates of *S. Typhimurium* were selected for this study.  
118 Among them, 239 (60.97%) strains were isolated from systemic sources: 237 (60.46 %) of  
119 blood culture and 2 (0.51 %) of cerebrospinal fluid. One hundred and forty-eight (37.76 %) of  
120 strains were isolated from non-systemic sources: 137 (34.95 %) of stool; 11 (2.81 %) of  
121 other samples. Four (1.02 %) strains were isolated from food sources and one (0.26%)  
122 strain do not register source. The isolates were resistant from 1 to 5 antimicrobial families  
123 with a total of 51 antimicrobial-resistant profiles, most of them were multidrug-resistant  
124 profiles (see Table S1 and the data published by Li *et. al.*, 2019 (S1 Table-metadata of the  
125 samples (Li *et al.*, 2019)).

## 126 **S. Typhimurium isolated from animals from a swine industry**

127 The 409 isolates of *Salmonella* spp. found in slaughterhouse, cutting plant and point sale  
128 was collected between 2013 to 2015. *Salmonella* was identified by method ISO 6579  
129 (2002) and MDS (Molecular Detection System -3M) (Bird *et al.*, 2016). Antimicrobial  
130 resistance was determined using Panel B1016-180 (Beckman Coulter, Negative Combo  
131 72, NC72), based on specifications by the Clinical & Laboratory Standards Institute (CLSI)  
132 M100-S27 (Clinical and Laboratory Standards Institute (CLSI), 2017).

133 73 isolates presenting multiple resistances to two or more first or second choice  
134 antimicrobials for human salmonellosis treatments were serotyped employing Kauffman-  
135 White-Le Minor scheme (Grimont & Weill, 2007). A total of 50 strains that were identified  
136 as *S. Typhimurium* were included. Of these isolated, 32 were obtained in the  
137 slaughterhouse (19 carcass, 4 knife, 4 saw and 5 other samples), 8 in cutting plants (4  
138 carcass, 2 utensils, and 2 other samples) and 10 in the point of sale (4 meat pulp and 6  
139 other samples) (Table S2).

#### 140 **DNA extraction of clinical and animal isolates**

141 All bacterial isolates were grown in 200 µl of Brain Heart Infusion (BHI) agar at 37°C  
142 overnight (12 to 18 hours). Total genomic DNA was extracted using a commercial kit  
143 QIAamp DNA mini-Kit (QIAGEN - Sample & Assay Technologies) for clinical samples, and  
144 a commercial kit Wizard Genomic DNA Purification Kit (Promega) for animal/swine  
145 samples, following the manufacturer's protocols. The DNA concentration and quality was  
146 measured using a NanoDrop™ 2000c spectrophotometer (Thermo Scientific™), following  
147 the manufacturer's recommendations, and visualized by agarose-gel electrophoresis.

#### 148 **Determination of class 1 integrons**

149 Search of class 1 integron in Typhimurium isolates recovered in the 392 clinical and 50  
150 swine samples was developed in two phases. First phase included 166 clinical and 50  
151 swine industry isolates, which were tested by conventional PCR and sanger sequencing of  
152 the amplified fragments. Second phase included 226 clinical isolates analyzed by whole  
153 genome sequencing (WGS). First phase: Determination of class 1 integrons by PCR  
154 amplification and sanger sequencing. The genomic DNA of 166 clinical and 50 isolates  
155 from swine industry samples, respectively, were used as a template in the PCR, to  
156 determine the presence of class 1 integrons. Amplification of *intI1* (class 1 integrase gene),

157 *qacEΔ1* (quaternary ammonium compound gene), *sul1* (dihydropteroate synthase gene)  
158 genes and the variable regions (CS') of class 1 integrons were performed with the primers  
159 described in Table 1. It was considered as a complete class 1 integron (complete Int1),  
160 that contains the structural genes *intl1*, *qacEΔ1* and *sul1*. The sequence of the CS' region  
161 was identified by nested PCR. The PCR reaction was prepared with final concentrations of  
162 1X Buffer, 1.5 mM MgCl<sub>2</sub>, primers that correspond to the *intl1*, CS' region, *qacEΔ1* and  
163 *sul1* genes have a final concentration/tube from 0.24, 0.5, 0.24 and 0.2 μM, respectively;  
164 1U Platinum Taq DNA Polymerase enzyme (Invitrogen), in 25 μl final reaction volume.  
165 Product sizes were verified by 1% agarose gel electrophoresis in 1X TAE buffer, at 100 V  
166 for 60 min. The PCR products obtained from the CS' region of the class 1 integron were  
167 purified with the DNA Clean & Concentrator™-5 Kit (Zymo Research) and were  
168 sequenced on ABI 3730xl (Applied Biosystems) sequencers (Macrogen, Korea). The  
169 putative resistance genes in the variable region were identified using BLAST (McGinnis &  
170 Madden, 2004), using a cut off of 97% or more for determine similarity to the gene  
171 reported in the BLASTn database (Johnson *et al.*, 2008). Second phase: Determination of  
172 class 1 integrons by WGS. Genomic DNA extraction, library preparation and WGS for 225  
173 clinical *S. Typhimurium* isolates were performed as part of the 10KSG consortium and  
174 were described previously (Perez-Sepulveda *et al.*, 2020). For 9 clinical isolates the WGS  
175 was made with Miseq Illumina platform. *De Novo* assembly were performed with CLC  
176 Genomics Workbench (Qiagen) version 8.0.1. "Rapid Annotation using Subsystem  
177 Technology, RAST" version 2.0 and SEED Viewer (<http://rast.nmpdr.org/seedviewer.cgi>)  
178 were used for annotation of genomes and with the pipeline available from  
179 [https://github.com/apredeus/10k\\_genomes](https://github.com/apredeus/10k_genomes) (Perez-Sepulveda *et al.*, 2020).

180 **Sequence analysis and class 1 integrons search.**



181 Annotation of assembled genomes was carried out with PATRIC 3.5.43 (Wattam *et al.*,  
182 2017), using the keywords: integron integrase, qacE, delta 1, dihydropteroate synthase  
183 type-2 (sul1) and, variable region resistance genes that were identified by sequencing of  
184 PCR products. The genome annotation in PATRIC was performed comparing external  
185 databases: CARD (Comprehensive Antibiotic Resistance Database) (Jia *et al.*, 2017)),  
186 DrugBank (a database with molecular information, mechanisms, interactions and drug  
187 targets) (Wishart *et al.*, 2018), NDARO (National Database of Antibiotic Resistant  
188 Organism) and PATRIC (Wattam *et al.*, 2017). The results obtained were confirmed in the  
189 BLAST (McGinnis & Madden, 2004) and INTEGRALL (Moura *et al.*, 2009) databases.

### 190 **Surrounding regions of the class 1 integrons**

191 We used the genome sequence obtained in *S. Typhimurium* clinical isolates positive for  
192 class 1 integrons, to reconstruct the surrounding regions and identify other mobile genetic  
193 elements flanking the integron ends. The genome annotations were analyzed by PATRIC  
194 3.5.43 and confirmed by BLAST.

### 195 **Molecular Typing**

196 For 33 clinical isolates of *S. Typhimurium* with class 1 integrons (named as IntI1-ColI0 to  
197 IntI1-ColI7), an MLST scheme with 7 housekeeping genes (*dnaN*, *sucA*, *purE*, *aroC*, *thrA*,  
198 *hemD*, *hisD*) was used to determine the sequence type (ST) (Larsen *et al.*, 2012). Three  
199 isolates were evaluated by PCR and Sanger sequencing and the remaining 30 isolates  
200 were analyzed by WGS. The ST number was determined by comparing the allele  
201 sequence in the Center for Genomic Epidemiology database with MLST 2.0  
202 (<https://cge.cbs.dtu.dk/services/MLST/>) and PubMLST (Public database for molecular  
203 typing and microbial genome diversity,  
204 [https://pubmlst.org/bigssdb?db=pubmlst\\_salmonella\\_seqdef](https://pubmlst.org/bigssdb?db=pubmlst_salmonella_seqdef)).

## 205 **Phylogeny by the SNP procedure**

206 An analysis of phylogenies inferred from Single Nucleotide Polymorphism (SNPs) (Kaas *et*  
207 *al.*, 2014) was performed at the Center for Genomic Epidemiology with CSI Phylogeny 1.4  
208 (<https://cge.cbs.dtu.dk/services/CSIPhylogeny/>), using the WGS of 30 *S. Typhimurium*  
209 isolates positive for class 1 integrons (Table S1), and the reference genome *S.*  
210 *Typhimurium* LT2, AC AE006468.2 (McClelland *et al.*, 2001). The WGS sequences were  
211 input in FASTQ format. The phylogenetic tree was performed under the recommended  
212 default parameters. The graphical viewer of phylogenetic tree was FigTree v1.4.4 2006-  
213 2018 (<http://tree.bio.ed.ac.uk/software/figtree>).

## 214 **Visualization and exploration of isolates containing class 1 integrons**

215 The phylogenetic relationships between *S. Typhimurium* genomes with class 1 integrons  
216 as a tree of phylogenies inferred by SNPs is used as a framework to associate with  
217 relevant data such as class 1 integrons types, department (latitude, longitude), temporal  
218 (year of isolation), source, phenotypic resistance profile, Inc groups and MLST  
219 ([https://microreact.org/project/vzZ3D\\_fds](https://microreact.org/project/vzZ3D_fds)), we use Microreact (Argimón *et al.*, 2016) is  
220 available free of charge (at <http://microreact.org>). The data file with the colors for the  
221 variables in comma separated value format (.CVS) and the Tree file in Newick format  
222 (.nwk) were input according to the Microreact instructions.

## 223 **Statistical Analysis**

224 Binary logistic regression was used to investigate the effect of the source (independent  
225 variable) as a predictor of obtaining the class 1 integron genetic marker (dependent  
226 variable). The analysis included the three most frequent sources (blood culture, stool,  
227 swine carcass meat). The statistical model evaluated the null hypothesis "there is an  
228 association between the source and the presence of class 1 integron". The critical value of

229 0.05 was used to predict whether to reject the null hypothesis. To look at the relationship  
230 between the dependent and independent variables, the Chi-square test of independence  
231 was performed, following the Hosmer and Lemeshow criterion. The weights of the  
232 variables were calculated by the Enter method. The Nagelkerke R-squared and the  
233 goodness-of-fit test the Hosmer and Lemeshow test were used to determine the adequacy  
234 of the model. Statistical analysis was running in SPSS (Ferrán Aranaz, 1996).

## 235 **Results**

### 236 **Colombian *S. Typhimurium* isolates positive for class 1 integrons**

237 In this study, 39.03% (n = 153/392) of the clinical (stool and blood samples) and 22%  
238 (n=11/50) of the swine *S. Typhimurium* isolates harbored a complete class 1 integron. The  
239 presence of genes *qacE* $\Delta$ 1 and *sul1* were confirmed by PCR amplification and DNA  
240 sequencing. Twelve different cassette arrays that share some family resistance genes  
241 were described, named Int11-Col0 to Int11-Col7 and Int11-Col10 to Int11-Col12. All isolates  
242 carried one type of class 1 integron, except for one isolate (GMR-S-125/2002) that  
243 contained two.

244 The most frequent cassette array from clinical samples was *dfr7-aac-bla*<sub>OXA-2</sub> (named Int11-  
245 Col1) found in 75.2% (n = 115/153). Int11-Col1 was not identified in pork isolates. Other  
246 cassettes/cassette combinations only observed in clinical isolates were *aadA2* (n = 9  
247 isolates), *aadA12* (n = 1 isolate), *bla*<sub>PSE-1</sub> (n = 4 isolates), *dfrA17-aadA5* (n = 1 isolate),  
248 *dfrA12*-hypothetical protein-*aadA2* (n = 1 isolate), and hypothetical protein-*aacA38*-  
249 Tryptophan synthase-*bla*<sub>CTX-M-12</sub>-mobile element protein-*bla*<sub>OXA-1</sub> (n = 3 isolates), whereas  
250 the cassette arrays *aadA7* (n = 2 isolates), *dfrA12-aadA2* (n = 1 isolate) and *aac-bla*<sub>OXA-2</sub> (n  
251 = 1 isolate) only occurred in pork isolates. The nomenclature for each class 1 integron  
252 (Int11-Col0 to Int11-Col12) and the cassette array described in this study are in Table 2 and

253 Figure 1. In addition, an empty class 1 integron without variable region named IntI1-Col0  
254 was found in 13.1% (n= 20/153) of the clinical isolates (Table S1, Table S3).

255 Genes present in the variable region of the integrons such as *dfrA*, *aadA*, *aac*, *bla* confers  
256 resistance to several antimicrobial families such as trimethoprim-sulfamethoxazole (SXT),  
257 streptomycin (STR) and spectinomycin (SPT), ampicillin (AMP) carbenicillin (Cb),  
258 kanamycin (KAN), netilmicin (NET) tobramycin (TOB), cephalosporins (Cp), expanded  
259 spectrum cephalosporins as cefuroxime (CXM) and monobactam (M). Consequently, the  
260 isolates carrying an integron class 1 were associated with 14 different antimicrobial  
261 resistance profiles (with resistances to 1 to 5 antimicrobial families) (Figure S1). Almost  
262 half of the class 1 integron from clinical isolates were resistant to AMP-STR-SXT-TET  
263 (52.3%; n = 80/153). The second most frequent antimicrobial resistance profile was AMP-  
264 SXT-TET present in 17% (n = 26/153), followed by AMP-CHL-STR-SXT-TET (10.5%, n =  
265 16/153) (Table S1).

266 In swine isolates, the class 1 integron were distributed within 3 antimicrobial resistance  
267 profiles (resistant to 1 to 3 families). The isolate carrying integron IntI1-Col10 exhibited  
268 AZT-SXT-TOB resistance profile, the isolates with IntI1-Col11 were resistant to CXM-TET  
269 and SXT, and the one with IntI1-Col12 also was resistant to CXM-TET (Table S1, Table  
270 S2).

271 Presence of class 1 integron was frequent in stool samples. In the 153 clinical isolates,  
272 class 1 integron were found in 112 stool samples (81.75%; n = 112/137) and 27 blood  
273 samples (11.4%, n = 27/237), and the remaining 14 were identified in other sources  
274 (100%, n = 4/4 of food and 71.43%, n = 10/14 of other samples). IntI1-Col2 and IntI1-  
275 Col3a were exclusively found in stool isolates, while IntI1-Col3b, IntI1-Col5, IntI1-Col6, and  
276 IntI1-Col7 were only found in blood isolates. IntI1-Col0, IntI1-Col1 and IntI1-Col4 were  
277 identified in 126 isolates obtained from stool, blood, and secretion samples (Figure 2).

278 Among the class 1 integron found in swine isolates, 9.4% (n= 3/32) were recovered from  
279 the slaughterhouse isolates, followed by 12.5% (n= 1/8) obtained from the meat plant  
280 waste isolates. Intl1-Col10 was found in cutting plants isolates (25%, n= 1/4 of meat  
281 carcasses), Intl1-Col11 and Intl1-Col12 were found in slaughterhouse isolates (both  
282 integrons in 10.5%, n= 2/19 of meat carcasses; and another Intl1-Col11 isolate obtained  
283 from a knife in 25%, n= 1/4).

#### 284 **Intl1-Col1 was the integron predominant in Colombian *S. Typhimurium* isolates**

285 Despite the cassette array variability observed, one cassette array was predominant in  
286 clinical isolates included in this study. Intl1-Col1 was found in 75.2% (n= 115/153) of the  
287 isolates positives for class 1 integron. The unusual variable region flanked by the 5'-CS  
288 and 3'-CS is 2785 bp, start with a non-coding region of 689 bp containing a short segment  
289 of the *bla*<sub>IMP-13</sub> gene (123 bp), followed by a *dfr7*, a partial *aac* gene and *bla*<sub>OXA-2</sub> gene.  
290 Surprisingly, BLASTn analysis of the unusual 2785 bp displayed 100% sequence identity  
291 with five sequences reported in GenBank: 3 *Escherichia coli* isolates deposited in the CDC  
292 & FDA Antibiotic Resistance Isolate Bank (Accession Number AC: CP021722.1,  
293 CP021535.1 and CP020048.1) and with a *S. Typhimurium* (AC: AM237806.1) and *S.*  
294 *Anatum* (AC: AM237807.1) isolates recovered from food on the north coast of Colombia  
295 (O'Mahony *et al.*, 2006).

296 A correlation was observed between the gene cassettes in the Intl1-Col1 and the  
297 resistance profile in the 115 clinical isolates. 96% isolates (n=110) were multidrug resistant  
298 with profile AMP-STR-SXT-TET observed in 60% (n= 69/115) of isolates, followed by  
299 AMP-SXT-TET in 20.9% (n= 24/115) isolates, and AMP-CHL-STR-SXT-TET in 8.7% (n=  
300 10/115) isolates. Less common were AMK-STR and AMK identified in 3 and 2 isolates,  
301 respectively (Figure S1).

302 In addition, Int1-Col1 appears to be broadly spread in the country. We found Int1-Col1 in  
303 12 departments (regions) from Nariño, located at the west of the country, to Bolivar in the  
304 north coast, and expand to Norte de Santander at the north bordering with Venezuela.  
305 Int1-Col1 was mainly recovered in Antioquia (42.6%, n= 49/115), the Capital District of  
306 Bogotá (39.1%, n= 45/115) and Valle del Cauca (8.7%, n= 10/115). *S. Typhimurium* with  
307 Int1-Col1 was identified as circulating in Colombia for 18 years, since 1997 until 2016,  
308 range of years selected for this study (Figure 3, Table S1).

### 309 **Several mobile elements are associated with Colombian Int1**

310 To understand the potential for lateral transfer of class 1 integron described in this study,  
311 we identified the main resistance plasmids and reconstructed the surrounding regions  
312 around the integrons by PCR and WGS. We identified seven common Enterobacterial  
313 incompatibility group (Inc) related with resistance determinants, including IncA/C, IncX1,  
314 IncHI1/HI2, IncI1 and ColpVC. The *S. Typhimurium* virulence plasmid pSTV with the IncF  
315 group was also identified in 34 out of 157 isolates carrying class 1 integron.

316 Interestingly, the predominant group was IncA/C (66 out of 104 isolates), followed by  
317 IncX1 (40 out of 104 isolates), IncF (34 out of 104 isolates), and small plasmids like  
318 ColpVC present in 11 out of 104 isolates. No relationship was observed between type of  
319 plasmids and type of class 1 integron, isolates with the predominant Int1-Col1 exhibited  
320 several plasmid combinations (Figure S2).

321 Isolates obtained from non-systemic sources (stool, urine, abscess, secretion) carried  
322 more plasmids of groups IncA/C, IncX1, IncF, IncI1, ColpVC, and IncHI1, than from  
323 systemic sources (blood) (Table 3). Plasmid groups IncA/C and IncA/C-IncX1 were  
324 identified in the isolates recovered from food and meat carcass of swine samples (Figure  
325 S3).

326 **WGS analysis of the genes surrounding class 1 integron showed two mechanisms**  
327 **of dispersion in clinical *S. Typhimurium* isolates.**

328 We confirmed that isolates with Int11-Col2, Int11-Col3a, Int11-Col3b, and Int11-Col5 belongs  
329 to the *Salmonella* genomic island 1 (SGI1) variant groups of the *S. Typhimurium* DT104  
330 clone. Int11-Col2 and Int11-Col3a that are in the same isolate, were identified in separate  
331 contigs within the same isolate. A detail analysis of both contigs showed an SGI1 variant  
332 composed by the genes of In104 as *sgiT* toxin/antitoxin and SO15 to SO24, the presence  
333 of *floR*, *tetR* and *tetG* resistance genes and by Int11-Col2 with an arrangement reported in  
334 *Proteus mirabilis* (Figure 1, Figure 4).

335 Int11-Col3b and Int11-Col5 were identified in one contig per isolate by WGS. The presence  
336 of two characteristics class 1 integrons of the In104 element was confirmed by PCR of the  
337 variable region in which two bands of 1 and 1.5 kb were observed (in 3 isolates: Int11-  
338 Col3b, n = 1 and Int11-Col5, n = 2). These fragments were not sequenced.

339 The predominant Int11-Col1 integron was inserted in a Tn5053 transposon flanked by Tn21  
340 at the 3'-end, in one contig, as the reported previously (Kholodii *et al.*, 1995, 1993). Genes  
341 located upstream of Int11-Col1 were not identified due to the integrase gene at the start of  
342 the contig.

343 Gene context for Int11-Col4, Int11-Col6, and Int11-Col7 was determined by association with  
344 other transposable elements, like TnAs3 from Tn3 family transposase, and the insertion  
345 sequences IS6/IS26 and IS91 (Figure 4, Table S4).

346 These results suggest that class 1 integron in Colombia are disseminated by mobile  
347 elements often associated with antibiotic resistance genes. We observed two mechanisms  
348 of dissemination, one by clonal spread of the integrons inserted in genomic islands, and  
349 second probably by horizontal transfer inserted in resistance plasmids as IncA/C or IncX1.

350 **The dispersion mechanisms of class 1 integrons suggest that in the Colombian**  
351 **population of *S. Typhimurium* there are phylogenetic subgroups.**

352 Genomic relatedness was analyzed for a subgroup of 30 clinical *S. Typhimurium* isolates  
353 carried class 1 integron. An unrooted phylogenetic SNP tree was generated (Figure 5).

354 Three phylogenetic clusters named A, B, and C were observed (Figure 5) in which clusters  
355 A and B were closely related, whereas cluster C was distant. Cluster A was composed  
356 exclusively of isolates with IntI1-Col1 inserted in Tn5053 obtained from stool and blood  
357 sources. Short branches in this group suggest a clonal relationship. Cluster B groups all  
358 the isolates with integrons present in SGI1 mainly associated with blood cultures,  
359 confirming the relationship between them. Cluster C grouped the isolates with class 1  
360 integrons associated with other mobile elements recovered from stool and blood culture.  
361 However, the 30 clinical *S. Typhimurium* isolates were grouped by MLST into the ST19.  
362 These results confirm that the ST19 lineage is predominant in Colombian clinical *S.*  
363 *Typhimurium* isolates and suggests clonal subgroups according to the dispersal  
364 mechanism observed for class 1 integron.

365 **Discussion**

366 In this work, we identified and characterized 12 different types of class 1 integron from  
367 clinical and swine resistant *S. Typhimurium* isolates in Colombia, most of them present in  
368 a low frequency. These result is agree with the abundant reports in the literature about the  
369 presence of several class 1 integron reported for this serovar (Antunes *et al.*, 2006;  
370 Ranjbar *et al.*, 2011; Vo *et al.*, 2010). The class 1 integron described in this study maintain  
371 the complete structure (Stokes & Hall, 1989), and carry genes that encode resistance to  
372 common antimicrobial families (inhibitors of the folate pathway, aminoglycosides and  $\beta$ -  
373 lactams) (Firoozeh *et al.*, 2012; Krauland *et al.*, 2009). In the present study, there was a



374 significant association between class 1 integron carriage and stool samples (odds ratio  
375 (OR) = 8.96), and among them the IntI1-Col2 and IntI1-Col3a are exclusive to this source.  
376 We also observed integrons only in blood culture samples as IntI1-Col3b, IntI1-Col5, IntI1-  
377 Col6 and IntI1-Col7 but with less frequency.

378 Despite the identification of 12 different types of class 1 integron, we found that IntI1-Col1  
379 is the predominant in 75.2% of the isolates that carry on integrons and noteworthy this  
380 IntI1-Col1 is widely spread in the national territory for 18 years (1997-2017). The analysis  
381 of the 2.7 kb variable region of IntI1-Col1 showed an unusual array of genes, that start with  
382 a non-coding region of 689 bp, follow by a truncated aminoglycoside resistance gene and  
383 end with a functional beta-lactamase resistance gene (*bla<sub>OXA-2</sub>*), and isolates with this  
384 integron showed mainly the multidrug resistance profiles AMP-STR-SXT-TET, AMP-SXT-  
385 TET, and AMP-CHL-STR-SXT-TET.

386 In the non-coding region, we identified the complete attI1 region (65 bp) (Partridge *et al.*,  
387 2000), as well as two *attC* recombination sites that only conserve the 1R core site of *attC*  
388 instead the two conserved regions of *attC* (1L, 5'-GCCTAAC and 1R, GTTAGGC-3') (Collis  
389 & Hall, 1992a; Recchia & Hall, 1995). The presence of two 1R core site of *attC* in the non-  
390 coding region could reflect excision events of two genes flanked at the 5' end by the 1R  
391 core site (where the GTT triplet is located, a specific recombination site), one of which  
392 could be the *bla<sub>IMP-13</sub>* gene, an excision reaction involving two *attC* elements (Collis *et al.*,  
393 1993). All these characteristics together could have affected the recombination capacity  
394 and therefore the ability of this integron to acquire, cleave, rearrange genes through site-  
395 specific recombination events described in these mobile genetic elements (Collis & Hall,  
396 1992b; Collis *et al.*, 1993) which could lead to this unusual variable region being  
397 conserved over time as part of the genetic platform of this class 1 integron.

398 BLAST analysis of the IntI1-Col1 sequence showed that it was reported in 2 *Salmonella*  
399 food isolates from Colombia (*S. Typhimurium* and *S. Anatum*) (O'Mahony *et al.*, 2006).  
400 The presence of this integron in *Salmonella* isolated from food suggests circulation in  
401 different stages of the food chain. Integron IntI1-Col1 was also identified in 3 *E.*  
402 *coli* isolates from the USA (AC: CP021722.1, CP021535.1 and CP020048.1) and 1  
403 *Salmonella enterica* [4,5,12: i: -] multidrug-resistant clinical isolate from Spain (Rodríguez  
404 *et al.*, 2008), suggesting international circulation of IntI1-Col1 in *Salmonella* and other  
405 *Enterobacteriaceae*. However, IntI1-Col1 is believed to be endemic due to its prevalence  
406 in Colombian *S. Typhimurium* since 1997.

407 Knowing the class 1 integron present in Colombian *S. Typhimurium* isolates together with  
408 the resistance determinants they carry and recognize that among them there is a  
409 predominant integron (IntI1-Col1), provides tools to verify the effectiveness of the  
410 measures for the management and identification of cases of salmonellosis in the  
411 Colombian population, in travelers and other sources from the national territory.

412 We observed a 64 mg/mL ampicillin MIC value for two isolates with IntI1-Col1 (GMR-S-  
413 328/2007 and GMR-S-207/2008), that carry *bla*<sub>OXA-2</sub> (data no show), a lower value than  
414 1024 mg/mL reported by Antunes and Fisher (Antunes & Fisher, 2014). We hypothesized  
415 that the position of *bla*<sub>OXA-2</sub> at the 3'-CS end of the variable region, was the indirect cause  
416 for the value MIC because are at the far end of the Pc promoter (last in the gene cassette  
417 arrangement) contrary to the common reports describe in *Salmonella* spp (Garrido *et al.*,  
418 2014; Montero *et al.*, 2012) and in the INTEGRALL database, that show these gene in the  
419 5'-CS initial region (Moura *et al.*, 2009). However, this result is similar to report previously  
420 by Kadlec *et al* (Kadlec *et al.*, 2007), who describe a class 1 integron only carry *bla*<sub>OXA-2</sub>,  
421 suggesting that value MIC may be possible associated to be as part of integron.

422 In this study, we report for the first-time a less frequent integron (0.72%) identified as Int1-  
423 Col4, with a variable region of 5189 bp, with genes that confer resistance to  
424 aminoglycosides and two different  $\beta$ -lactams genes (Figure 1). This integron was identified  
425 in the 3 Typhimurium clinical isolates that exhibited resistance to major number of  
426 antibiotic family (Table S1) and were recovered from stool and blood culture only in 2003  
427 and 2006, after that year no more isolates with this characteristic were recovered in the  
428 surveillance.

429 Regarding the 10 others class 1 integron, the variable region revealed a predominance of  
430 genes that confer resistance to aminoglycosides (*aadA* and *aac* genes) alone or  
431 downstream of an trimethoprim resistance genes (*dfrA* genes), and upstream of  $\beta$ -lactams  
432 resistance genes (*bla<sub>OXA</sub>*, *bla<sub>CTX-M</sub>* genes) and also the *bla<sub>PSE-1</sub>* gene (Figure 1). The  
433 presence of these genes has been extensively documented as part of the class 1  
434 integrons in *Salmonella* spp. (including *S. Typhimurium*) and Enterobacteriaceae, and  
435 usually correlated with the resistance phenotype observed in the respective isolates  
436 analyzed (Argüello *et al.*, 2018; Krauland *et al.*, 2009; Martinez-Freijo *et al.*, 1998; Zhao *et*  
437 *al.*, 2017). These characteristics make the class 1 integron identified as relevant elements  
438 in the acquisition, selection, maintenance, and dispersion of antibiotic resistance gene  
439 cassettes in the Colombian population of *S. Typhimurium* as previously noted for this  
440 serovar (Lopes *et al.*, 2016).

441 An interesting result for us, describe in rare cases, is the presence of Int1-Col0 in 13.1% of  
442 the isolates. This is an empty integron without resistance genes in the variable region, that  
443 is an available platform for capture of resistance gene cassettes to generate new types of  
444 class 1 integrons in *S. Typhimurium* Colombian population, an adaptive advantage against  
445 selection pressure due to exposure to different antimicrobial agents (Firoozeh *et al.*, 2019;  
446 Lapierre *et al.*, 2008).

447 Regarding the integrons located in SGI-1 variants, the result are agree with that in  
448 Colombia circulated the pandemic *S. Typhimurium* MDR DT104 (Li *et al.*, 2019), but with  
449 variations during the time. Surveillance of isolates associated with the *S. Typhimurium*  
450 MDR DT104 pandemic showed the same MDR signature of this phage type, which were  
451 also identified within the global time line in which it appeared and spread throughout the  
452 world (Leekitcharoenphon *et al.*, 2016). We infer that in Colombia the first isolate derived  
453 from the Global epidemic *S. Typhimurium* MDR DT104 were replaced by other DT104  
454 clones; thus the only isolate with IntI1-Col2 and IntI1-Col3 was collected in 2002, which  
455 was replaced by two DT104 clones, the first with IntI1-Col3b identified for a period of 3  
456 years (2006-2008); and the second, a more successful clone carrying IntI1-Col5, was  
457 present for 8 years (2004-2011), which coincides with the period in which the Colombian  
458 cluster of *S. Typhimurium* MDR DT104 was identified (Li *et al.*, 2019). The chromosomal  
459 location of these class 1 integrons means that there is a lower probability of horizontal  
460 transfer events of the antimicrobial resistance genes they carry (Zhang *et al.*, 2018).

461 Regarding clonality, the 30 *S. Typhimurium* isolates belong to worldwide spread ST19 that  
462 circulates in Colombia (Li *et al.*, 2019) and the SNP phylogenetic analysis suggests that  
463 the different mobile elements identified in this study affect the subpopulations lineages. We  
464 observed that the 11 *S. Typhimurium* isolates bearing IntI1-Col1 belong to a subclonal  
465 lineage (Figure 5A), whereas the isolates with SGI-1 grouped in another branch (Figure  
466 5B). Our hypothesis is that mobile element Tn21-IntI1-Col1 is possibly located in the  
467 IncA/C plasmid, based on the result publish previously by O'Mahony (O'Mahony *et al.*,  
468 2006), and because literature mention that Tn21-Class 1 integron is a classical transposon  
469 insert in IncA/C plasmids in *S. Typhimurium* and other *Enterobacteriaceae* (Tamamura *et*  
470 *al.*, 2013). This couple of elements are widespread among *Enterobacteriaceae* and they

471 are recognize as elements of importance in public health, given their ability to confer  
472 multidrug resistance in human and animal pathogens (Fernández-Alarcón *et al.*, 2011).

473 The above observations allows us to hypothesize that the dissemination of this Int1-Col1 in  
474 Colombia is a non- excluding two-way process, the first by horizontal transfer of the Tn21  
475 in which the Int1-Col1 is incorporated, possibly linked to the IncA/C plasmid, which  
476 allowed it to mobilize towards strains without these mobile genetic elements; and the  
477 second through vertical transfer that leads to the continuous dissemination of Int1-Col1,  
478 and therefore to its establishment in the population (Domingues *et al.*, 2012; Loftie-Eaton  
479 *et al.*, 2016; Meng *et al.*, 2011; Turner *et al.*, 1998).

480 In the class 1 integrons identified in the Colombian swine industry samples, two were  
481 reported previously in similar sources in other countries. The Int1-Col10 was described in  
482 *Salmonella* spp. (including *S. Typhimurium*) recovered from food products of animal origin  
483 (pig, chicken, duck) (Li *et al.*, 2013), and in *E. coli* from clinical isolates (Shin *et al.*, 2015).  
484 Int1-Col11 is present in *E. coli* isolates from animals (Ajiboye *et al.*, 2009; Mazel *et al.*,  
485 2000) and *Salmonella* spp. of broilers (Zhao *et al.*, 2020).

486 Interestingly, we observed that Int1-Col12 is like Int1-Col1 from clinical samples and was  
487 related with the presence of IncA/C plasmid in the same isolate. Int1-Col12 lack of all the  
488 3'CS non-coding region and *dfr7* gene and carry the same truncated *aacA* and *bla*<sub>OXA-2</sub>  
489 genes observed in Int1-Col1. These similarities let us to consider that we are probably  
490 observed an integron evolution process in our population. We hypothesized two scenarios  
491 from the absence of the non-coding region and *dfr7* gene. One, in swine industry isolates,  
492 could happen a selective pressure of antibiotics such as aminoglycosides and  $\beta$ -lactams,  
493 causing the rearrangement of the gene cassette mediated by the integrase *int1* in where  
494 the *dfr7* gene cassette would have been cleaved (Barraud & Ploy, 2015; Hocquet *et al.*,  
495 2012). Second, in clinical isolates, the insertion of the circularized *dfr7* gene cassette by

496 site-specific recombination catalyzed by the *intl1* integrase (*intl1* gene) acquired from  
497 another clinical strain (Hall et al., 1999), forming the cassette gene arrangement  
498 characteristic of Intl1-Col1, an integron that could increase the adaptation of *S.*  
499 *Typhimurium* to human pressure.

500 The selective pressure of antibiotics in the swine production chain in Colombia is mainly  
501 due to the non-therapeutic use and abuse of antibiotics. There are reports of  
502 contamination with traces of mainly  $\beta$ -lactams and aminoglycosides in environmental and  
503 food sources (Agudelo-Londoño *et al.*, 2012; Arenas & Moreno Melo, 2018). Faecal  
504 (human, animal) contamination from the ground and surface water sources have allowed  
505 the release of antibiotics, pathogenic microorganisms, other drugs that could explain the  
506 abundance of antibiotic resistance genes associated with class 1 integrons in aquatic  
507 environments (Agramont *et al.*, 2020; Agudelo-Londoño *et al.*, 2012).

508 The similarity between Intl1-Col1 and Intl1-Col12 in isolates of human and animal origin,  
509 respectively, allows highlighting the importance of the animal production in the appearance  
510 and dispersion of *S. Typhimurium* MDR strains carrying class 1 integron through the  
511 consumption of contaminated foods of animal origin. Multiresistance of animal and human  
512 sources, supporting this possible transmission route (Ajiboye *et al.*, 2009; Zhao *et al.*,  
513 2003); however, the data obtained in this study do not allow us to rule out that the direction  
514 of the transfer of class 1 integron has been from humans to animal production species  
515 since close contact between these species promotes exposure to Intl1-bearing bacteria  
516 through water, food, handling or practices implemented in production processes,  
517 assumption supported by the transfer of class 1 integrons from humans to wild animals  
518 (McDougall *et al.*, 2019). Regardless of the direction of class 1 integron transmission, the  
519 presence and maintenance of these integrons in *S. Typhimurium* MDR could be the result  
520 of an adaptive benefit of the bacterium in the face of selective pressure due to exposure to

521 the antibiotics, stimulating their dispersion (Krauland *et al.*, 2009), which is of interest  
522 because of the impact it can have on the production chain, health, food safety in humans  
523 and animals; hence the global importance of the One Health approach for the  
524 management of antibiotic resistance (Centers for Disease Control and Prevention (U.S.),  
525 2019).

## 526 **Conclusions**

527 In this study, we characterized 12 class 1 integron in *S. Typhimurium* clinical and swine  
528 industry isolates. In the clinical isolates a relationship between presence of class 1  
529 integron and stool samples was observed. Among them, IntI1-Col1 inserted in Tn21 were  
530 the predominant in the country by 20 years and IntI1-Col4 was reported for the first time.  
531 *S. Typhimurium* isolates with these integrons were typed as ST19 mainly from non-  
532 systemic sources (stool) and with the IncA/C plasmid.

533 Two different insertion sites for class 1 integron were describe, one was chromosomal and  
534 the other in plasmids, as well as several transposons and insertion sequences surrounding  
535 the class 1 integron, exhibited several mechanisms of dispersion for these elements. The  
536 meaning of founding several class 1 integron, with differences in the genomic  
537 environment, is that Colombian *S. Typhimurium* isolates are exposed to the dynamic  
538 acquisition of mobile element present in other Enterobacteriaceae and that disseminated  
539 by horizontal or clonal transfer.

## 540 **Data availability**

541 The data of positive isolates for class 1 integron are summarized in S1 Table, year, origin,  
542 source, counties, phenotypic resistance profile, gene cassette array, type of class 1  
543 integron, the sequences in FASTA format of the 139 isolates are available in ENA, and  
544 NCBI short Read Archive under the accession numbers listed in S1 table (BioProject

545 Number PRJNA527650, SRA Study Number SRP188631), and the remain 13 FASTA  
546 sequences are available in at NCBI short Read Archive under the accession numbers  
547 listed in S1 table (BioProject Number SAMN25227165).

#### 548 **Ethics approval and consent to participate.**

549 This research has the approval of the Technical Research Committee (CTIN) and the  
550 Ethics Research Committee (CEIN) of the Instituto Nacional de Salud (INS), Colombia with  
551 the codes CTIN-05-2015 and CTIN-05-2017. Clinical and patient ID from whom the S.  
552 Typhimurium clinical isolates were recovered, were anonymized.

#### 553 **Competing interests**

554 The authors declare that they have no competing interests.

#### 555 **Authors' contribution**

556 N.Y.F-D. performed the laboratory tests, analysis of results, elaboration of tables, figures  
557 and drafted the manuscript. Y.L. performed the WGS experiments. E.N.U. performed the  
558 laboratory test. B.P-S. made the WGS experiments. E.L.O-R. performed lab tests. L.A.M.  
559 performed the phenotypic analysis of the isolates. J.C.D.H. participated in the design and  
560 coordination of the WGS experiments. A.K.C-C. and I.C.C-T. collected the pork samples  
561 and performed laboratory tests. S.Z-B. performed the statistical analysis. J.M.V. and M.W.  
562 conceived and coordinated the study, participated in the standardization and execution of  
563 tests, discussion of results and revision of the manuscript. All authors read and approved  
564 the final manuscript.

#### 565 **Acknowledgements**

566 This work was supported by COLCIENCIAS (SIGP 210471250745), COLCIENCIAS  
567 (Project no. 120358635758), the Ministerio de Agricultura y Desarrollo Rural (MADR)



568 Convenio no. 20150360, PUJ PP-ID: 00006737, PY-ID: 00006865 and by the internal  
569 funds of the National Institute of Health, Colombia. N.Y.F-D. is supported by the special  
570 agreement of scientific and technological cooperation no. 014/14 of 2014 between Antonio  
571 Nariño University and the National Institute of Health, Colombia. E.N.U.is supported by  
572 ICETEX Scholarship Reciprocity Program for Foreigners in Colombia. To Andres Montilla  
573 for his support with the WGS test of a sample. Genome sequencing was performed at the  
574 Earlham Institute as part of the 10KSG consortium which is supported by the Global  
575 Challenges Research Fund data and resources grant (BBS/OS/GC/000009D). Next-  
576 generation sequencing and library construction were delivered via the BBSRC National  
577 Capability in Genomics and Single Cell (BB/CCG1720/1) at Earlham Institute, by members  
578 of the Genomics Pipelines Group.

579

580 **Bibliography**

581 **Agramont, J., Gutierrez-Cortez, S., Joffré, E., Sjöling, Å. & Toledo, C. C. (2020).**

582 Antibiotic resistance genes and class 1 integron: Evidence of fecal pollution as a major  
583 driver for their abundance in water and sediments impacted by metal contamination and  
584 wastewater in the Andean region of Bolivia. *BioRxiv*.

585 **Agudelo-Londoño, P. A., Rivera-Caycedo, J. E., Bernal-Vera, M. E. & Castaño-**

586 **Ramírez, E. (2012).** Caracterización del riesgo de contaminación por actividades  
587 pecuarias en el río Molinos, Villamaría (Caldas, Colombia). *Veterinaria y Zootecnia* **6**,  
588 56–82.

589 **Ajiboye, R. M., Solberg, O. D., Lee, B. M., Raphael, E., Debroy, C. & Riley, L. W.**

590 **(2009).** Global spread of mobile antimicrobial drug resistance determinants in human  
591 and animal *Escherichia coli* and *Salmonella* strains causing community-acquired  
592 infections. *Clin Infect Dis* **49**, 365–371.

593 **Antunes, N. T. & Fisher, J. F. (2014).** Acquired Class D  $\beta$ -Lactamases. *Antibiotics (Basel)*

594 **3**, 398–434.

595 **Antunes, P., Machado, J. & Peixe, L. (2006).** Characterization of antimicrobial resistance

596 and class 1 and 2 integrons in *Salmonella enterica* isolates from different sources in  
597 Portugal. *J Antimicrob Chemother* **58**, 297–304.

598 **Arenas, N. E. & Moreno Melo, V. (2018).** Producción pecuaria y emergencia de

599 antibiótico resistencia en Colombia: Revisión sistemática. *Infectio* **22**, 110.

600 **Argimón, S., Abudahab, K., Goater, R. J. E., Fedosejev, A., Bhai, J., Glasner, C., Feil,**

601 **E. J., Holden, M. T. G., Yeats, C. A. & other authors. (2016).** Microreact: visualizing

602 and sharing data for genomic epidemiology and phylogeography. *Microb Genom* **2**,  
603 e000093.

604 **Argüello, H., Guerra, B., Rodríguez, I., Rubio, P. & Carvajal, A. (2018).**

605 Characterization of Antimicrobial Resistance Determinants and Class 1 and Class 2  
606 Integrons in *Salmonella enterica* spp., Multidrug-Resistant Isolates from Pigs. *Genes*  
607 (*Basel*) **9**.

608 **Barraud, O. & Ploy, M.-C. (2015).** Diversity of Class 1 Integron Gene Cassette

609 Rearrangements Selected under Antibiotic Pressure. *J Bacteriol* **197**, 2171–2178.

610 **Bird, P., Flannery, J., Crowley, E., Agin, J. R., Goins, D. & Monteroso, L. (2016).**

611 Evaluation of the 3M™ Molecular Detection Assay (MDA) 2 - *Salmonella* for the  
612 Detection of *Salmonella* spp. in Select Foods and Environmental Surfaces: Collaborative  
613 Study, First Action 2016.01. *J AOAC Int* **99**, 980–997.

614 **Boore, A. L., Hoekstra, R. M., Iwamoto, M., Fields, P. I., Bishop, R. D. & Swerdlow, D.**

615 **L. (2015).** *Salmonella enterica* Infections in the United States and Assessment of  
616 Coefficients of Variation: A Novel Approach to Identify Epidemiologic Characteristics of  
617 Individual Serotypes, 1996-2011. *PLoS ONE* **10**, e0145416.

618 **Centers for Disease Control and Prevention (U.S.). (2019).** *Antibiotic Resistance*

619 *Threats in the United States, 2019*. Atlanta, Georgia: National Center for Emerging  
620 Zoonotic and Infectious Diseases (U.S.).

621 **Clinical and Laboratory Standards Institute (CLSI). (2017).** *Performance Standards for*

622 *Antimicrobial Susceptibility Testing. CLSI supplement M100*, 27th edn. (Wayne, PA:  
623 Clinical and Laboratory Standards Institute, Ed.). Pennsylvania 19087 USA.

- 624 **Collis, C. M. & Hall, R. M. (1992a).** Gene cassettes from the insert region of integrons are  
625 excised as covalently closed circles. *Mol Microbiol* **6**, 2875–2885.
- 626 **Collis, C. M. & Hall, R. M. (1992b).** Site-specific deletion and rearrangement of integron  
627 insert genes catalyzed by the integron DNA integrase. *J Bacteriol* **174**, 1574–1585.
- 628 **Collis, C. M., Grammaticopoulos, G., Briton, J., Stokes, H. W. & Hall, R. M. (1993).**  
629 Site-specific insertion of gene cassettes into integrons. *Mol Microbiol* **9**, 41–52.
- 630 **Domingues, S., da Silva, G. J. & Nielsen, K. M. (2012).** Integrons: Vehicles and  
631 pathways for horizontal dissemination in bacteria. *Mob Genet Elements* **2**, 211–223.
- 632 **Escudero, J. A., Loot, C., Nivina, A. & Mazel, D. (2015).** The integron: adaptation on  
633 demand. *Microbiol Spectr* **3**, MDNA3-0019.
- 634 **European Food Safety Authority & European Centre for Disease Prevention and  
635 Control. (2017).** The European Union summary report on trends and sources of  
636 zoonoses, zoonotic agents and food-borne outbreaks in 2016. *EFSA J* **15**, e05077.
- 637 **Farthing, M., Salam, M. A., Lindberg, G., Dite, P., Khalif, I., Salazar-Lindo, E.,  
638 Ramakrishna, B. S., Goh, K.-L., Thomson, A. & other authors. (2013).** Acute  
639 diarrhea in adults and children: a global perspective. *J Clin Gastroenterol* **47**, 12–20.
- 640 **Fernández-Alarcón, C., Singer, R. S. & Johnson, T. J. (2011).** Comparative genomics of  
641 multidrug resistance-encoding IncA/C plasmids from commensal and pathogenic  
642 *Escherichia coli* from multiple animal sources. *PLoS ONE* **6**, e23415.
- 643 **Ferrán Aranaz, M. (1996).** *SPSS para windows: programación y análisis estadístico*.  
644 Madrid: McGraw-Hill.

- 645 **Firoozeh, F., Zahraei-Salehi, T., Shahcheraghi, F., Karimi, V. & Aslani, M. M. (2012).**  
646 Characterization of class I integrons among *Salmonella enterica* serovar Enteritidis  
647 isolated from humans and poultry. *FEMS Immunol Med Microbiol* **64**, 237–243.
- 648 **Firoozeh, F., Mahluji, Z., Khorshidi, A. & Zibaei, M. (2019).** Molecular characterization  
649 of class 1, 2 and 3 integrons in clinical multi-drug resistant *Klebsiella pneumoniae*  
650 isolates. *Antimicrob Resist Infect Control* **8**, 59.
- 651 **Garrido, V., Sánchez, S., San Román, B., Zabalza-Baranguá, A., Díaz-Tendero, Y., de**  
652 **Frutos, C., Mainar-Jaime, R.-C. & Grilló, M.-J. (2014).** Simultaneous infections by  
653 different *Salmonella* strains in mesenteric lymph nodes of finishing pigs. *BMC Vet Res*  
654 **10**, 59.
- 655 **GBD 2017 Non-Typhoidal Salmonella Invasive Disease Collaborators. (2019).** The  
656 global burden of non-typhoidal salmonella invasive disease: a systematic analysis for  
657 the Global Burden of Disease Study 2017. *Lancet Infect Dis* **19**, 1312–1324.
- 658 **Grimont, P. A. D. & Weill, F. X. (2007).** Antigenic formulae of the *Salmonella* serovars.  
659 *WHO collaborating centre for reference and research on Salmonella*, **99**, 1–166.
- 660 **Hall, R. M. (2012).** Integrons and gene cassettes: hotspots of diversity in bacterial  
661 genomes. *Ann N Y Acad Sci* **1267**, 71–78.
- 662 **Hall, R. M., Collis, C. M., Kim, M. J., Partridge, S. R., Recchia, G. D. & Stokes, H. W.**  
663 **(1999).** Mobile gene cassettes and integrons in evolution. *Ann N Y Acad Sci* **870**, 68–80.
- 664 **Hendriksen, R. S., Vieira, A. R., Karlsmose, S., Lo Fo Wong, D. M. A., Jensen, A. B.,**  
665 **Wegener, H. C. & Aarestrup, F. M. (2011).** Global monitoring of *Salmonella* serovar  
666 distribution from the World Health Organization Global Foodborne Infections Network

- 667 Country Data Bank: results of quality assured laboratories from 2001 to 2007.  
668 *Foodborne Pathog Dis* **8**, 887–900.
- 669 **Hocquet, D., Llanes, C., Thouverez, M., Kulasekara, H. D., Bertrand, X., Plésiat, P.,**  
670 **Mazel, D. & Miller, S. I. (2012).** Evidence for induction of integron-based antibiotic  
671 resistance by the SOS response in a clinical setting. *PLoS Pathog* **8**, e1002778.
- 672 **Hoelzer, K., Moreno Switt, A. I. & Wiedmann, M. (2011).** Animal contact as a source of  
673 human non-typhoidal salmonellosis. *Vet Res* **42**, 34.
- 674 **Hu, X.-Y., Logue, M. & Robinson, N. (2020).** Antimicrobial resistance is a global problem  
675 - a UK perspective. *Eur J Integr Med* **36**, 101136.
- 676 **Instituto Nacional de Salud. (2017).** Guía para la vigilancia por laboratorio de  
677 Enfermedad Diarreica Aguda (EDA) y Enfermedad Transmitida por Alimentos (ETA) de  
678 origen bacteriano.  
679 <https://www.ins.gov.co/buscador/Informacin%20de%20laboratorio/Gu%C3%ADa%20para%20la%20vigilancia%20por%20laboratorio%20de%20EDA%20y%20ETA.pdf#search=VIGILANCIA%20DE%20EDA>.  
681 =VIGILANCIA%20DE%20EDA.
- 682 **Instituto Nacional de Salud. (2019).** *Informe de Vigilancia por Laboratorio*  
683 *de Salmonella spp.: “Colombia 1997 - 2018.”* Bogotá, DC., Colombia: Instituto Nacional  
684 de Salud.
- 685 **Issenhuth-Jeanjean, S., Roggentin, P., Mikoleit, M., Guibourdenche, M., de Pinna, E.,**  
686 **Nair, S., Fields, P. I. & Weill, F.-X. (2014).** Supplement 2008-2010 (No. 48) to the  
687 White-Kauffmann-Le Minor Scheme. *Res Microbiol* **165**, 526–530.

- 688 **Jia, B., Raphenya, A. R., Alcock, B., Waglechner, N., Guo, P., Tsang, K. K., Lago, B.**  
689 **A., Dave, B. M., Pereira, S. & other authors. (2017).** CARD 2017: expansion and  
690 model-centric curation of the comprehensive antibiotic resistance database. *Nucleic*  
691 *Acids Res* **45**, D566–D573.
- 692 **Johnson, M., Zaretskaya, I., Raytselis, Y., Merezhuk, Y., McGinnis, S. & Madden, T. L.**  
693 **(2008).** NCBI BLAST: a better web interface. *Nucleic Acids Res* **36**, W5-9.
- 694 **Kaas, R. S., Leekitcharoenphon, P., Aarestrup, F. M. & Lund, O. (2014).** Solving the  
695 problem of comparing whole bacterial genomes across different sequencing platforms.  
696 *PLoS ONE* **9**, e104984.
- 697 **Kadlec, K., Wiegand, I., Kehrenberg, C. & Schwarz, S. (2007).** Studies on the  
698 mechanisms of beta-lactam resistance in *Bordetella bronchiseptica*. *J Antimicrob*  
699 *Chemother* **59**, 396–402.
- 700 **Kholodii, G. Ya., Yurieva, O. V., Lomovskaya, O. L., Gorlenko, Zh. M., Mindlin, S. Z. &**  
701 **Nikiforov, V. G. (1993).** Tn5053, a Mercury Resistance Transposon with Integron's  
702 Ends. *J Mol Biol* **230**, 1103–1107.
- 703 **Kholodii, G. Y., Mindlin, S. Z., Bass, I. A., Yurieva, O. V., Minakhina, S. V. & Nikiforov,**  
704 **V. G. (1995).** Four genes, two ends, and a res region are involved in transposition of  
705 Tn5053: a paradigm for a novel family of transposons carrying either a mer operon or an  
706 integron. *Mol Microbiol* **17**, 1189–1200.
- 707 **Kingsley, R. A., Msefula, C. L., Thomson, N. R., Kariuki, S., Holt, K. E., Gordon, M. A.,**  
708 **Harris, D., Clarke, L., Whitehead, S. & other authors. (2009).** Epidemic multiple drug

709 resistant Salmonella Typhimurium causing invasive disease in sub-Saharan Africa have  
710 a distinct genotype. *Genome Res* **19**, 2279–2287.

711 **Krauland, M. G., Marsh, J. W., Paterson, D. L. & Harrison, L. H. (2009).** Integron-  
712 mediated multidrug resistance in a global collection of nontyphoidal Salmonella enterica  
713 isolates. *Emerging Infect Dis* **15**, 388–396.

714 **Lapierre, L., Cornejo, J., Borie, C., Toro, C. & San Martín, B. (2008).** Genetic  
715 characterization of antibiotic resistance genes linked to class 1 and class 2 integrons in  
716 commensal strains of Escherichia coli isolated from poultry and swine. *Microb Drug*  
717 *Resist* **14**, 265–272.

718 **Larsen, M. V., Cosentino, S., Rasmussen, S., Friis, C., Hasman, H., Marvig, R. L.,**  
719 **Jelsbak, L., Sicheritz-Pontén, T., Ussery, D. W. & other authors. (2012).** Multilocus  
720 sequence typing of total-genome-sequenced bacteria. *J Clin Microbiol* **50**, 1355–1361.

721 **Leekitcharoenphon, P., Hendriksen, R. S., Le Hello, S., Weill, F.-X., Baggesen, D. L.,**  
722 **Jun, S.-R., Ussery, D. W., Lund, O., Crook, D. W. & other authors. (2016).** Global  
723 Genomic Epidemiology of Salmonella enterica Serovar Typhimurium DT104. *Appl*  
724 *Environ Microbiol* **82**, 2516–2526.

725 **Li, R., Lai, J., Wang, Y., Liu, S., Li, Y., Liu, K., Shen, J. & Wu, C. (2013).** Prevalence  
726 and characterization of Salmonella species isolated from pigs, ducks and chickens in  
727 Sichuan Province, China. *Int J Food Microbiol* **163**, 14–18.

728 **Li, Y., Pulford, C. V., Díaz, P., Perez-Sepulveda, B. M., Duarte, C., Predeus, A. V.,**  
729 **Wiesner, M., Heavens, D., Low, R. & other authors. (2019).** Genomic and



- 730 phylogenetic analysis of *Salmonella* Typhimurium and its monophasic variants  
731 responsible for invasive endemic infections in Colombia. *BioRxiv*.
- 732 **Loftie-Eaton, W., Yano, H., Burleigh, S., Simmons, R. S., Hughes, J. M., Rogers, L.**  
733 **M., Hunter, S. S., Settles, M. L., Forney, L. J. & other authors. (2016).** Evolutionary  
734 Paths That Expand Plasmid Host-Range: Implications for Spread of Antibiotic  
735 Resistance. *Mol Biol Evol* **33**, 885–897.
- 736 **Lopes, G. V., Michael, G. B., Cardoso, M. & Schwarz, S. (2016).** Antimicrobial  
737 resistance and class 1 integron-associated gene cassettes in *Salmonella enterica*  
738 serovar Typhimurium isolated from pigs at slaughter and abattoir environment. *Vet*  
739 *Microbiol* **194**, 84–92.
- 740 **Magiorakos, A. P., Srinivasan, A., Carey, R. B., Carmeli, Y., Falagas, M. E., Giske, C.**  
741 **G., Harbarth, S., Hindler, J. F., Kahlmeter, G. & other authors. (2012).** Multidrug-  
742 resistant, extensively drug-resistant and pandrug-resistant bacteria: an international  
743 expert proposal for interim standard definitions for acquired resistance. *Clin Microbiol*  
744 *Infect* **18**, 268–281.
- 745 **Martinez-Freijo, P., Fluit, A. C., Schmitz, F. J., Grek, V. S., Verhoef, J. & Jones, M. E.**  
746 **(1998).** Class I integrons in Gram-negative isolates from different European hospitals  
747 and association with decreased susceptibility to multiple antibiotic compounds. *J*  
748 *Antimicrob Chemother* **42**, 689–696.
- 749 **Mazel, D., Dychinco, B., Webb, V. A. & Davies, J. (2000).** Antibiotic resistance in the  
750 ECOR collection: integrons and identification of a novel aad gene. *Antimicrob Agents*  
751 *Chemother* **44**, 1568–1574.

- 752 **McClelland, M., Sanderson, K. E., Spieth, J., Clifton, S. W., Latreille, P., Courtney, L.,**  
753 **Porwollik, S., Ali, J., Dante, M. & other authors. (2001).** Complete genome sequence  
754 of *Salmonella enterica* serovar Typhimurium LT2. *Nature* **413**, 852–856.
- 755 **McDougall, F., Boardman, W., Gillings, M. & Power, M. (2019).** Bats as reservoirs of  
756 antibiotic resistance determinants: A survey of class 1 integrons in Grey-headed Flying  
757 Foxes (*Pteropus poliocephalus*). *Infect Genet Evol* **70**, 107–113.
- 758 **McGinnis, S. & Madden, T. L. (2004).** BLAST: at the core of a powerful and diverse set of  
759 sequence analysis tools. *Nucleic Acids Res* **32**, W20-5.
- 760 **Meng, H., Zhang, Z., Chen, M., Su, Y., Li, L., Miyoshi, S.-I., Yan, H. & Shi, L. (2011).**  
761 Characterization and horizontal transfer of class 1 integrons in *Salmonella* strains  
762 isolated from food products of animal origin. *Int J Food Microbiol* **149**, 274–277.
- 763 **Montero, I., Herrero, A., Mendoza, M. C., Rodicio, R. & Rodicio, M. R. (2012).**  
764 Virulence-resistance plasmids (pUO-StVR2-like) in meat isolates of *Salmonella enterica*  
765 serovar Typhimurium. *Food Res Int* **45**, 1025–1029.
- 766 **Moura, A., Soares, M., Pereira, C., Leitão, N., Henriques, I. & Correia, A. (2009).**  
767 INTEGRALL: a database and search engine for integrons, integrases and gene  
768 cassettes. *Bioinformatics* **25**, 1096–1098.
- 769 **O’Mahony, R., Quinn, T., Drudy, D., Walsh, C., Whyte, P., Mattar, S. & Fanning, S.**  
770 **(2006).** Antimicrobial resistance in nontyphoidal *Salmonella* from food sources in  
771 Colombia: evidence for an unusual plasmid-localized class 1 integron in serotypes  
772 Typhimurium and Anatum. *Microb Drug Resist* **12**, 269–277.

- 773 **Organización de las Naciones Unidas para la Alimentación y la Agricultura &**  
774 **Organización Mundial de la Salud. (2016).** *Informe de actividades de INFOSAN*  
775 *2014/2015.* Suiza: Organización Mundial de la Salud.
- 776 **Partridge, S. R., Recchia, G. D., Scaramuzzi, C., Collis, C. M., Stokes, H. W. & Hall, R.**  
777 **M. (2000).** Definition of the attI1 site of class 1 integrons. *Microbiology (Reading, Engl)*  
778 **146 ( Pt 11),** 2855–2864.
- 779 **Partridge, S. R., Kwong, S. M., Firth, N. & Jensen, S. O. (2018).** Mobile genetic  
780 elements associated with antimicrobial resistance. *Clin Microbiol Rev* **31**.
- 781 **Perez-Sepulveda, B. M., Heavens, D., Pulford, C. V., Predeus, A. V., Low, R.,**  
782 **Webster, H., Schudoma, C., Rowe, W., Lipscombe, J. & other authors. (2020).** An  
783 accessible, efficient and global approach for the large-scale sequencing of bacterial  
784 genomes. *BioRxiv*.
- 785 **Ranjbar, R., Giammanco, G. M., Farshad, S., Owlia, P., Aleo, A. & Mammina, C.**  
786 **(2011).** Serotypes, antibiotic resistance, and class 1 integrons in Salmonella isolates  
787 from pediatric cases of enteritis in Tehran, Iran. *Foodborne Pathog Dis* **8,** 547–553.
- 788 **Recchia, G. D. & Hall, R. M. (1995).** Gene cassettes: a new class of mobile element.  
789 *Microbiology (Reading, Engl)* **141 ( Pt 12),** 3015–3027.
- 790 **Rodríguez, E. C., Díaz-Guevara, P., Moreno, J., Bautista, A., Montaña, L., Realpe, M.**  
791 **E., Della Gaspera, A. & Wiesner, M. (2017).** Laboratory surveillance of Salmonella  
792 enterica from human clinical cases in Colombia 2005-2011. *Enferm Infecc Microbiol Clin*  
793 **35,** 417–425.

- 794 **Rodríguez, I., Rodicio, M. R., Herrera-León, S., Echeita, A. & Mendoza, M. C. (2008).**  
795 Class 1 integrons in multidrug-resistant non-typhoidal *Salmonella enterica* isolated in  
796 Spain between 2002 and 2004. *Int J Antimicrob Agents* **32**, 158–164.
- 797 **Shin, H. W., Lim, J., Kim, S., Kim, J., Kwon, G. C. & Koo, S. H. (2015).** Characterization  
798 of trimethoprim-sulfamethoxazole resistance genes and their relatedness to class 1  
799 integron and insertion sequence common region in gram-negative bacilli. *J Microbiol*  
800 *Biotechnol* **25**, 137–142.
- 801 **Simpson, K. M. J., Hill-Cawthorne, G. A., Ward, M. P. & Mor, S. M. (2018).** Diversity of  
802 *Salmonella* serotypes from humans, food, domestic animals and wildlife in New South  
803 Wales, Australia. *BMC Infect Dis* **18**, 623.
- 804 **Stokes, H. W. & Hall, R. M. (1989).** A novel family of potentially mobile DNA elements  
805 encoding site-specific gene-integration functions: integrons. *Mol Microbiol* **3**, 1669–1683.
- 806 **Tamamura, Y., Tanaka, K., Akiba, M., Kanno, T., Hatama, S., Ishihara, R. & Uchida, I.**  
807 **(2013).** Complete nucleotide sequences of virulence-resistance plasmids carried by  
808 emerging multidrug-resistant *Salmonella enterica* Serovar Typhimurium isolated from  
809 cattle in Hokkaido, Japan. *PLoS ONE* **8**, e77644.
- 810 **Tran-Dien, A., Le Hello, S., Bouchier, C. & Weill, F.-X. (2018).** Early transmissible  
811 ampicillin resistance in zoonotic *Salmonella enterica* serotype Typhimurium in the late  
812 1950s: a retrospective, whole-genome sequencing study. *Lancet Infect Dis* **18**, 207–214.
- 813 **Turner, P. E., Cooper, V. S. & Lenski, R. E. (1998).** Tradeoff between horizontal and  
814 vertical modes of transmission in bacterial plasmids. *Evolution* **52**, 315–329.

- 815 **Vo, A. T. T., van Duijkeren, E., Gaastra, W. & Fluit, A. C. (2010).** Antimicrobial  
816 resistance, class 1 integrons, and genomic island 1 in Salmonella isolates from Vietnam.  
817 *PLoS ONE* **5**, e9440.
- 818 **Wattam, A. R., Davis, J. J., Assaf, R., Boisvert, S., Brettin, T., Bun, C., Conrad, N.,**  
819 **Dietrich, E. M., Disz, T. & other authors. (2017).** Improvements to PATRIC, the all-  
820 bacterial Bioinformatics Database and Analysis Resource Center. *Nucleic Acids Res* **45**,  
821 D535–D542.
- 822 **Wishart, D. S., Feunang, Y. D., Guo, A. C., Lo, E. J., Marcu, A., Grant, J. R., Sajed, T.,**  
823 **Johnson, D., Li, C. & other authors. (2018).** DrugBank 5.0: a major update to the  
824 DrugBank database for 2018. *Nucleic Acids Res* **46**, D1074–D1082.
- 825 **World Health Organization. (2015).** *Global Action Plan on Antimicrobial Resistance*  
826 (World Health Organization, Ed.). Geneva, Switzerland: World Health Organization.
- 827 **Zhang, A. N., Li, L.-G., Ma, L., Gillings, M. R., Tiedje, J. M. & Zhang, T. (2018).**  
828 Conserved phylogenetic distribution and limited antibiotic resistance of class 1 integrons  
829 revealed by assessing the bacterial genome and plasmid collection. *Microbiome* **6**, 130.
- 830 **Zhao, S., Qaiyumi, S., Friedman, S., Singh, R., Foley, S. L., White, D. G., McDermott,**  
831 **P. F., Donkar, T., Bolin, C. & other authors. (2003).** Characterization of Salmonella  
832 enterica serotype Newport isolated from humans and food animals. *J Clin Microbiol* **41**,  
833 5366–5371.
- 834 **Zhao, X., Yang, J., Zhang, B., Sun, S. & Chang, W. (2017).** Characterization of Integrons  
835 and Resistance Genes in Salmonella Isolates from Farm Animals in Shandong  
836 Province, China. *Front Microbiol* **8**, 1300.

837 **Zhao, X., Hu, M., Zhang, Q., Zhao, C., Zhang, Y., Li, L., Qi, J., Luo, Y., Zhou, D. & Liu,**  
838 **Y. (2020).** Prevalence and antimicrobial resistance of Salmonella isolated from broilers  
839 in Shandong, China.

840

#### 841 **Figures in the text**

#### 842 **Figure 1. Schematic representation of class 1 integrons (IntI1-Col0 to Col12) with** 843 **different cassette arrays of S. Typhimurium in Colombia (Col), 1997-2017.**

844 These integrons are aligned with respect to the class 1 integron integrase gene (*intl1*). The  
845 arrows indicating the orientation of transcription. The orange and purple arrows indicate  
846 the 5' and 3' conserved sequence respectively of the class 1 integrons groups, all gene  
847 cassettes in the variable region are presented as blue arrows. The predominant integron is  
848 seen in the blue box with the primary recombination site (*attI1*, thick red bar †), each  
849 cassette bounded by secondary recombination sites (slim red bar with the 1L-*attC*  
850 sequence, \* and the 1R-*attC* sequence, \*\*). (a) Class 1 integrons in clinical isolates, in (b)  
851 Class 1 integrons in swine isolates.

#### 852 **Figure 2. Class 1 integrons (n ≥ 3) and source in S. Typhimurium isolates from** 853 **Colombian clinical samples, during 1997-2017.**

854 Stacked bar chart showing class 1 integrons types with frequencies ≥ 3 and the source  
855 from which the isolate was obtained. The X-axis shows the number of isolates of each  
856 integron type, the values within the bars represent the number of isolates for each source  
857 in each type of integron.

#### 858 **Figure 3. Spatial and temporal distribution of class 1 integrons in S. Typhimurium** 859 **from Colombia (Col) between 1997-2017.**

860 The spatial and temporal visualization of class 1 integrons was elaborated on Microreact  
861 (DOI: 10.1099/mgen.0.000093). The top view panel shows the geographical distribution of  
862 class 1 integrons. The size of the circles matches the number of integrons identified in  
863 each department. In the lower view panel, the timeline shows the presence of all class 1  
864 integrons since 1997, outstanding the predominance of IntI1-Col1 in aquamarine color. In  
865 the isolates analyzed from 1998, no class 1 integrons were identified.

#### 866 **Figure 4. Schematic representation of surrounding regions in class 1 integrons** 867 **(IntI1-Col1 to Col7) of Colombian S. Typhimurium, 1997-2017.**

868 The surrounding region of class 1 integrons are represented by yellow arrows, on similar  
869 mobile platforms, the synteny of the genes is evident. The integrons are represented by  
870 orange, blue and purple arrows and they are in line with the class 1 integron integrase  
871 gene (*intl1*). The arrows indicating the orientation of transcription.

872 **Figure 5.** Phylogenetic tree by SNPs of 30 Colombian S. Typhimurium strains positive for  
873 class 1 integrons (IntI1), the separation of the clades allows linking the class 1 integrons  
874 types with the source.

875 Cluster A consists of isolates with Int11-Col1 from stool and blood sources, Cluster B  
876 groups the class 1 integrons mainly associated with blood culture. Cluster C with longer  
877 branches groups integrons that are mostly rare and present in blood and stool  
878 samples. The unrooted phylogenetic by SNPs was generated by the Center for Genomic  
879 Epidemiology with CSI Phylogeny 1.4 (<https://cge.cbs.dtu.dk/services/CSIPhylogeny/>) and  
880 visualized by Microreact (DOI: 10.1099/mgen.0.000093). The circles represent the types of  
881 integrons and the rectangles the source of the isolates. The length of each branch is  
882 proportional to the number of SNPs identified among the isolates.

883

## 884 **Tables in the text**

885 **Table 1. PCR primers for class 1 and 2 integrons.**

886 **Table 2. Class 1 integrons in isolates of *S. Typhimurium*, Colombia 1997-2017.**

887 The Class 1 integrons of clinical samples were Col0 to Col7 (total positives = 153), and the  
888 class 1 integrons of swine samples were Col10 to Col12 (total positives = 11).

889 **Table 3. Inc groups of plasmids and the source in *S. Typhimurium* of Colombia,  
890 1997-2017.**

891 In stool samples, the IncA/C and IncX1 plasmids are more frequent and in blood culture  
892 samples the IncF plasmid is the predominant. Food isolates carry the plasmid groups  
893 IncA/C and IncA/C-IncX1.

894

## 895 **Supplementary information**

896 **Figure S1. Susceptibility profile and main types of class 1 integrons ( $n \geq 3$ ) detected  
897 in *S. Typhimurium* isolates from Colombian clinical samples, during 1997-2017.**

898 Stacked bar graph showing the resistance profiles ( $n = 13$ ) in which class 1 integrons types  
899 with frequencies  $\geq 3$  were observed. The X-axis shows the number of isolates for each  
900 resistance profile, the values inside the bars represent the number of isolates for each  
901 integron type.

902 **Figure S2. Class 1 integrons types and Inc groups of plasmids in *S. Typhimurium*  
903 from Colombia (Col), 1997-2017.**

904 Stacked bar chart showing the class 1 integrons types and Inc groups of plasmids present  
905 in the isolates was obtained. The labels on each of the bars represent the number of  
906 isolates for each Inc groups of plasmids. The X-axis shows the number of isolates of each  
907 integron type.

908 **Figure S3. Inc groups of plasmids ( $n \geq 3$ ) and source in *S. Typhimurium* isolates  
909 from Colombia, during 1997-2017.**

910 Stacked bar chart showing Inc groups of plasmids with frequencies  $\geq 3$  and the  
911 source from which the isolate was obtained. The X-axis shows the number of isolates of

912 each Inc groups of plasmids, the values within the bars represent the number of isolates  
913 for each source.

914

915 **Table S1. Colombian isolates of S. Typhimurium with class 1 integrons recovered**  
916 **between 1997 and 2017.**

917 The table shows the characteristics of the S. Typhimurium isolates, the types of class 1  
918 integrons they carry, and the gene array identified in their variable region.

919 **Table S2. Data of all swine samples of S. Typhimurium used.**

920 **Table S3. List of variable region genes of class 1 integrons in Colombian S.**  
921 **Typhimurium isolates with GenBank accession numbers and two Patric's**  
922 **annotations for similar sequences.**

923



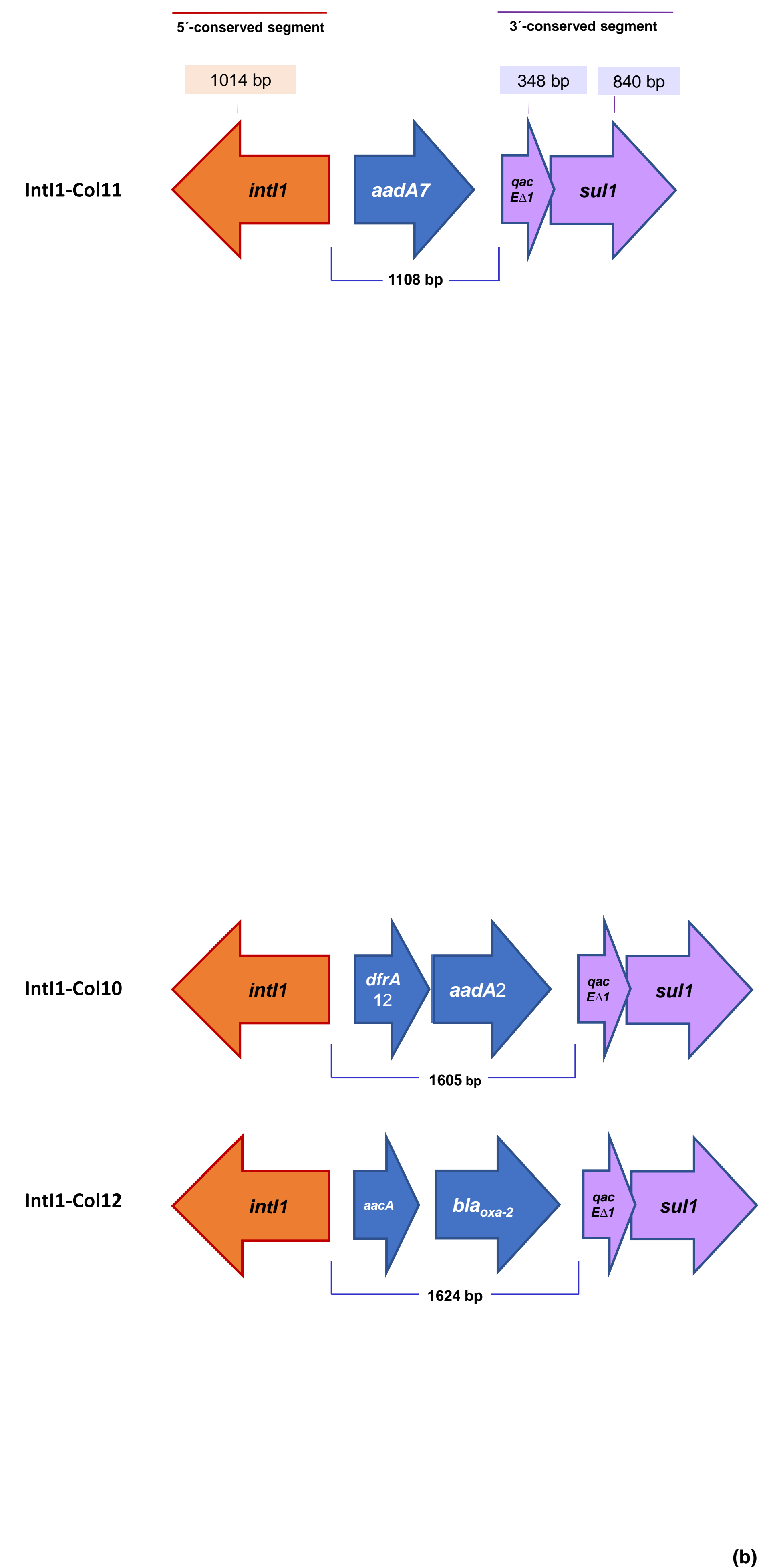
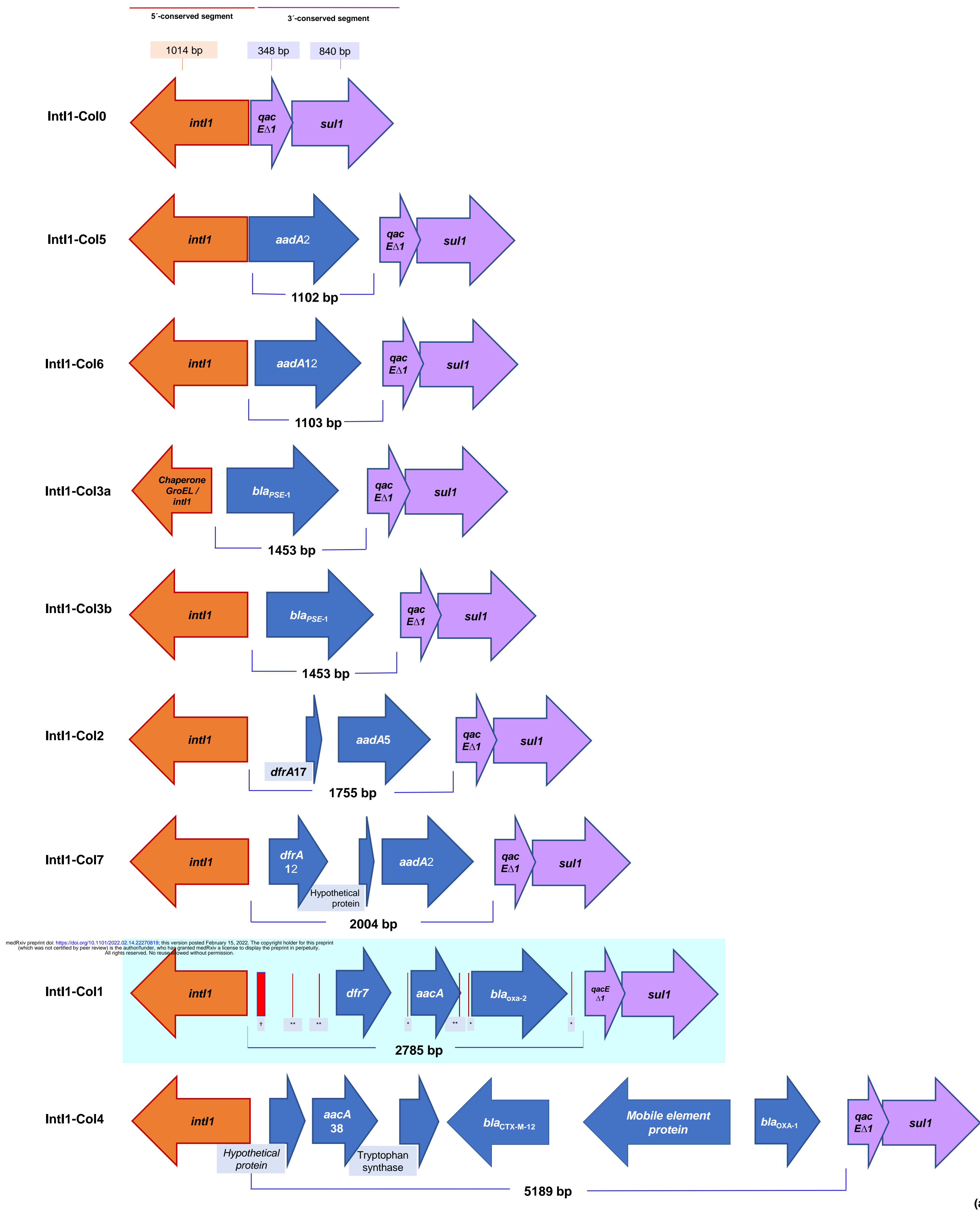
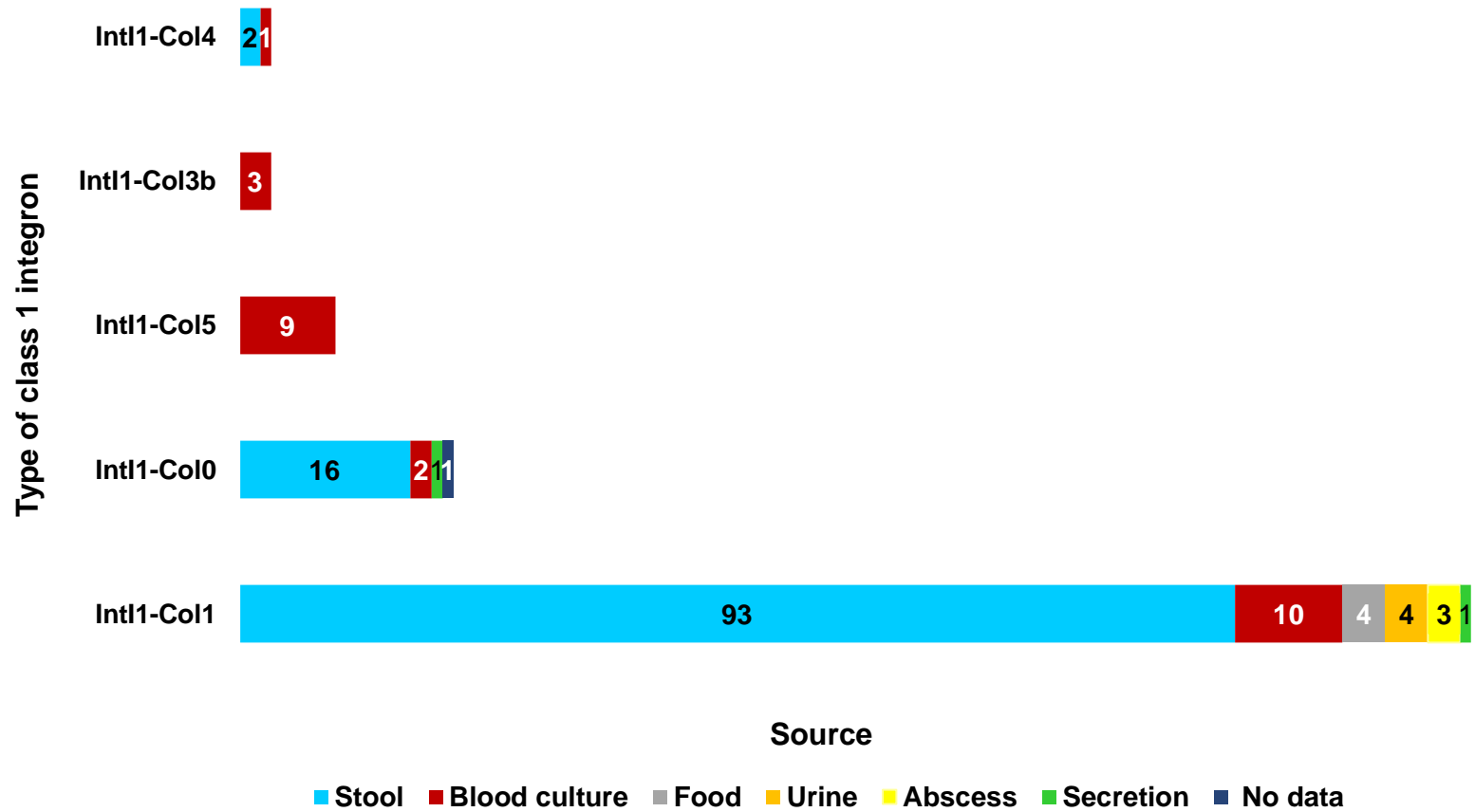
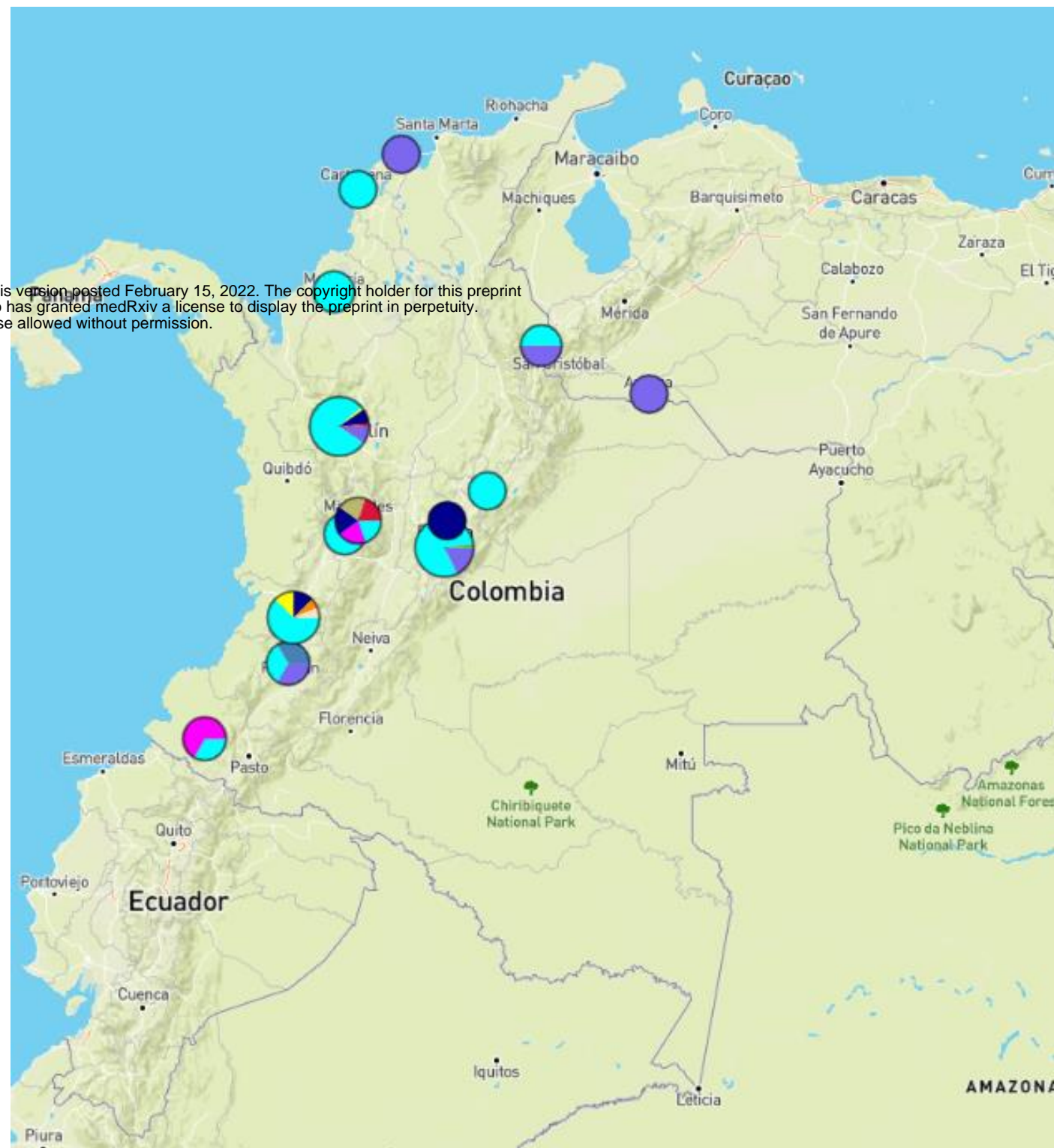


Figure 1. Schematic representation of class 1 integrons (IntI1-Col0 to Col12) with different cassette arrays of *S. Typhimurium* in Colombia (Col), 1997-2017.

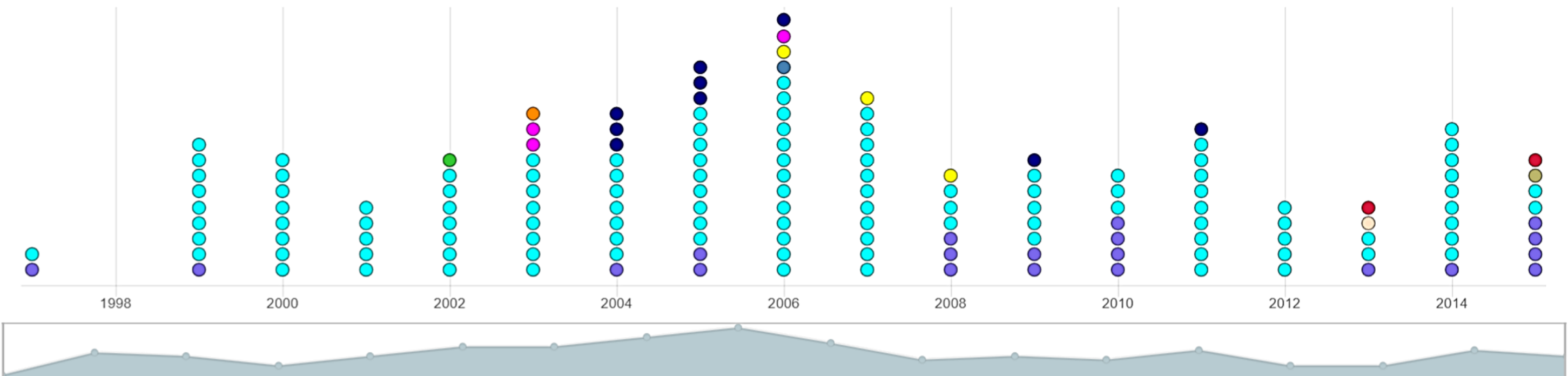


**Figure 2.** Class 1 integrons ( $n \geq 3$ ) and source in *S. Typhimurium* isolates from Colombian clinical samples, during 1997-2017.

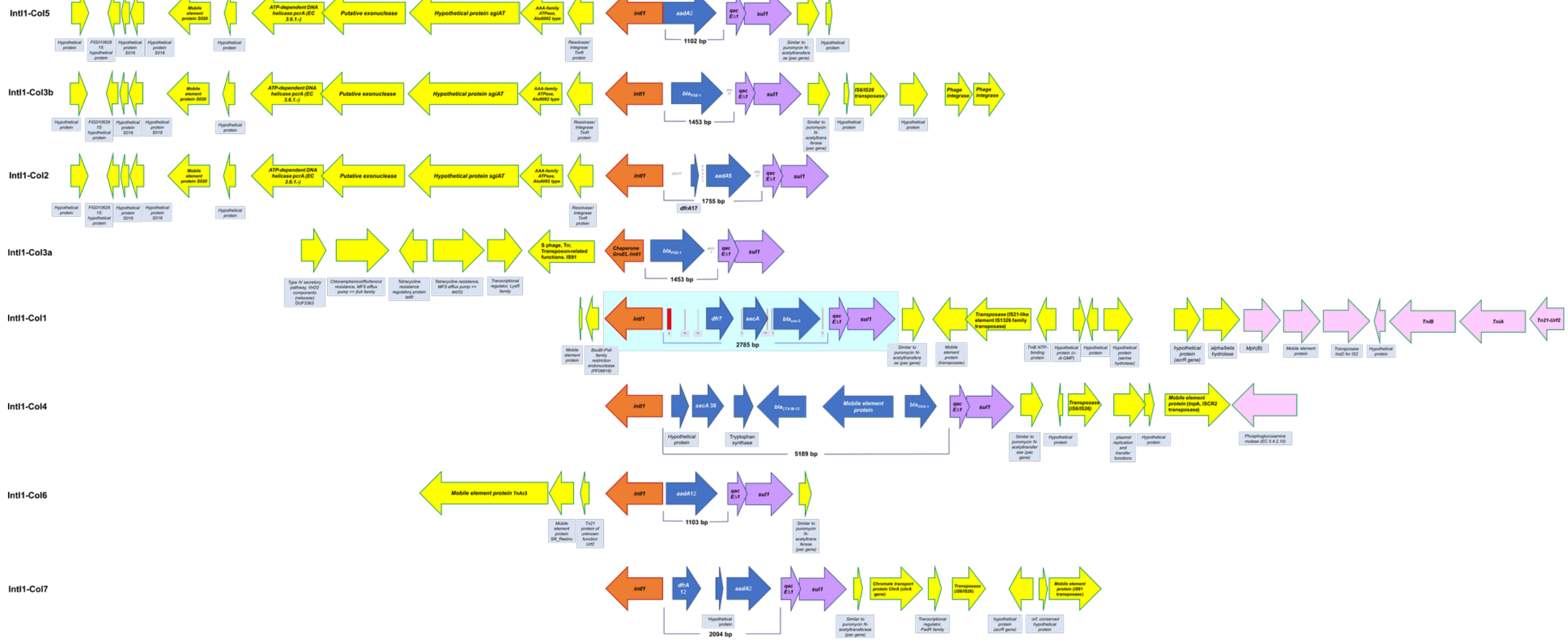
medRxiv preprint doi: <https://doi.org/10.1101/2022.02.14.22270819>; this version posted February 15, 2022. The copyright holder for this preprint (which was not certified by peer review) is the author/funder, who has granted medRxiv a license to display the preprint in perpetuity. All rights reserved. No reuse allowed without permission.



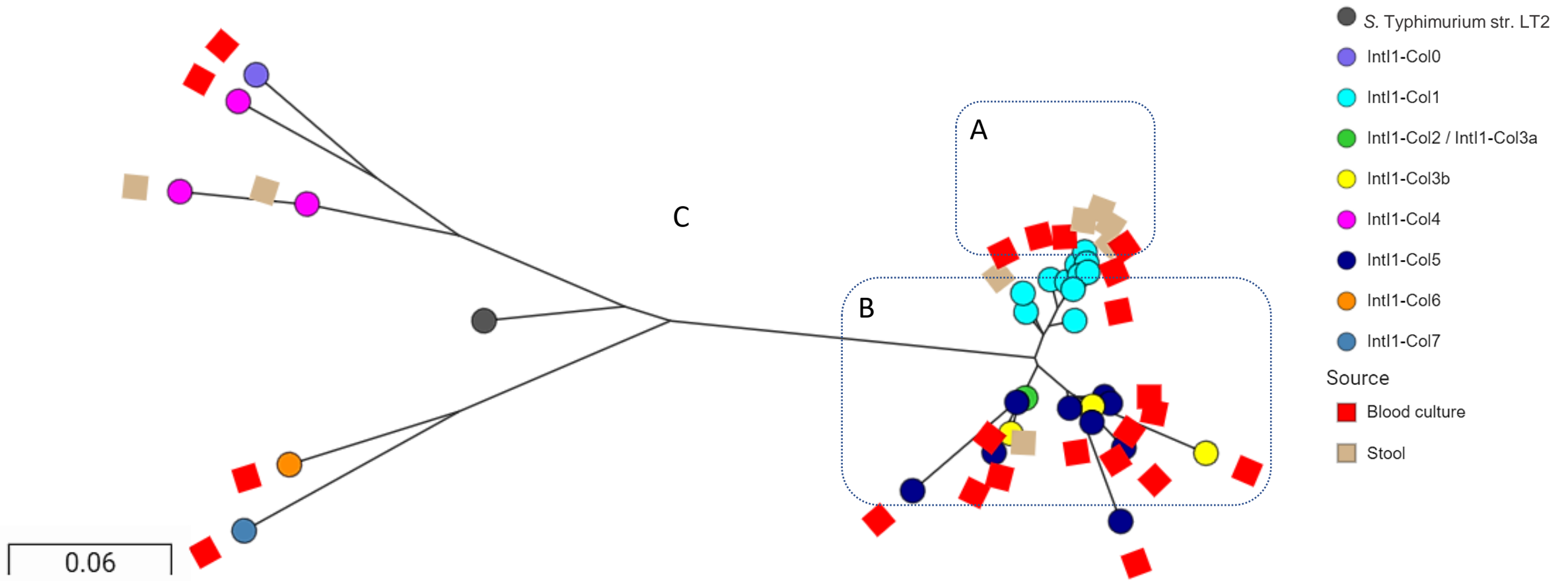
- IntI1-Col0
- IntI1-Col1
- IntI1-Col10
- IntI1-Col11
- IntI1-Col12
- IntI1-Col2 / IntI1-Col3a
- IntI1-Col3b
- IntI1-Col4
- IntI1-Col5
- IntI1-Col6
- IntI1-Col7



**Figure 3.** Spatial and temporal distribution of class 1 integrons (IntI1) in *S. Typhimurium* from Colombia (Col) between 1997-2017.



**Figure 4.** Schematic representation of surrounding regions in class 1 integrons (Int1-Col1 to Col7) of Colombian *S. Typhimurium*, 1997-2017.



**Figure 5.** Phylogenetic tree by SNPs of 30 Colombian *S. Typhimurium* strains positive for class 1 integrons (IntI1), the separation of the clades allows linking the IntI1 types with the source.

**Table 1.** PCR primers for class 1 and 2 integrons.

Target region	Primers	Sequence (5'- 3')	GenBank accession no. or reference (gene)	Primer size (bp <sup>a</sup> )	Expected size (bp)	Annealing temperature (°C)	Reference
<i>int1</i>	Int1-F*	GGT CAA GGA TCT GGA TTT CG	<a href="#">U49101</a> ( <i>int1</i> )	20	483	50	(Machado <i>et al.</i> , 2005)
	Int1-R**	ACA TGC GTG TAA ATC ATC GTC		21			
Variable region	5'-CS2-F	TCC AGA ACC TTG ACC GAA CG	<a href="#">SRR8740445</a> (the end of <i>int1</i> )	20	Variable	55	This study
	5'-CS2-R	CGG AAG GGG CAA GCT TAG TA	<a href="#">SRR8740445</a> (the end of <i>qacEΔ1</i> )	20			
<i>sul1</i>	Sul1-F	ACT AAG CTT GCC CCT TCC GC	<a href="#">EU780013.1</a> ( <i>sul1</i> )	20	1100	52	(Márquez <i>et al.</i> , 2008)
	Sul1-R	CTA GGC ATG ATC TAA CCC TCG		21			
<i>qacEΔ1</i>	<i>qacEΔ1</i> -F	ATC GCA ATA GTT GGC GAA GT	<a href="#">M95287</a> ( <i>qacEΔ1</i> )	20	250	51	(Guerra <i>et al.</i> , 2001)
	<i>qacEΔ1</i> -R	CAA GCT TTT GCC CAT GAA GC		20			
Region between <i>dfi7</i> and <i>oxa2</i>	<i>dfi7</i> -F	ATA TTT CTG GCG GTG GTC AA	<a href="#">SRR8740445</a> ( <i>dfi7</i> )	20	1000	51	This study
	<i>oxa2</i> -R	GTC TGC CAC AAC TAT CGT GC	<a href="#">SRR8740445</a> ( <i>bla<sub>oxa-2</sub></i> )	20			

\*F: forward

\*\*R: reverse

<sup>a</sup>bp: base pairs

## Bibliography

**Guerra, B., Soto, S. M., Argüelles, J. M. & Mendoza, M. C. (2001).** Multidrug resistance is mediated by large plasmids carrying a class 1 integron in the emergent *Salmonella enterica* serotype [4,5,12:i:-]. *Antimicrob Agents Chemother* **45**, 1305–1308.

**Machado, E., Cantón, R., Baquero, F., Galán, J.-C., Rollán, A., Peixe, L. & Coque, T. M. (2005).** Integron content of extended-spectrum-beta-lactamase-producing *Escherichia coli* strains over 12 years in a single hospital in Madrid, Spain. *Antimicrob Agents Chemother* **49**, 1823–1829.

**Márquez, C., Labbate, M., Raymondo, C., Fernández, J., Gestal, A. M., Holley, M., Borthagaray, G. & Stokes, H. W. (2008).** Urinary tract infections in a South American population: dynamic spread of class 1 integrons and multidrug resistance by homologous and site-specific recombination. *J Clin Microbiol* **46**, 3417–3425.

**Table 2.** Class 1 integrons in isolates of *S. Typhimurium*, Colombia 1997-2017.

<b>Class 1 integron<sup>*</sup></b>	<b>Variable region size (bp)</b>	<b>Variable region</b>	<b>n (%)</b>
IntI1-Col <sup>Δ</sup> 0	No data	null variable region	20 (13.1)
IntI1-Col1	2785	<i>dfr7-aac-bla<sub>OXA-2</sub></i>	115 (75.2)
IntI1-Col2 / Col3a	1755 / 1453	<i>dfrA17-aadA5 / bla<sub>PSE-1</sub></i>	1 (0.65)
IntI1-Col3b	1453	<i>bla<sub>PSE-1</sub></i>	3 (2.0)
IntI1-Col4	5189	Hypothetical protein <i>-aacA38-Tryptophan synthase-bla<sub>CTX-M-12</sub>-Mobile element protein-bla<sub>OXA-1</sub></i>	3 (2.0)
IntI1-Col5	1102	<i>aadA2</i>	9 (5.9)
IntI1-Col6	1103	<i>aadA12</i>	1 (0.65)
IntI1-Col7	2004	<i>dfrA12</i> -Hypothetical protein- <i>aadA2</i>	1 (0.65)
IntI1-Col10	1605	<i>dfrA12-aadA2</i>	1 (9.1)
IntI1-Col11	1108	<i>aadA7</i>	2 (18.2)
IntI1-Col12	1624	<i>aac-bla<sub>OXA-2</sub></i>	1 (9.1)

<sup>\*</sup>IntI1: Class 1 integron.

<sup>Δ</sup>Col: Colombia.

<sup>Δ</sup>bp: base pairs.

**Table 3.** Inc groups of plasmids and the source in *S. Typhimurium* of Colombia, 1997-2017.

Fuente	IncA/C	IncF	IncX1	IncA/C- ColpVC	IncA/C- IncF	IncA/C- IncX1	IncF- Incl1	IncF- IncX1	IncA/C- ColpVC- IncX1	IncF- IncHI2- IncX1	IncA/C- IncF- Incl1	IncA/C- IncF- IncX1	IncA/C- ColpVC- IncHI1- IncX1	IncA/C- ColpVC- IncF- IncX1	IncA/C- ColpVC- IncF- IncHI1- Incl1	IncA/C- ColpVC- IncF- IncHI1- Incl1- IncX1
Stool	33	2	15	1	2	11					1	1	1	1	1	1
Blood culture		16		2	3		1	1	1					2		
Food	1					1										
Urine			1				1									
Abscess	1		1													
Meat carcass (swine)	1															
No data										1						
<b>Total</b>	<b>36</b>	<b>18</b>	<b>17</b>	<b>3</b>	<b>5</b>	<b>12</b>	<b>2</b>	<b>1</b>	<b>1</b>	<b>1</b>	<b>1</b>	<b>1</b>	<b>1</b>	<b>3</b>	<b>1</b>	<b>1</b>