

Incidence and associated factors of elderly mortality following hip fracture in Brazil: a systematic review and meta-analysis

Viviane Cristina Uliana Peterle*, MD, MsC, PhD

**Corresponding Author*

E-mail: vivianepeterle@hotmail.com

Orcid: <https://orcid.org/0000-0003-1693-242X>

Afiliation 1: Escola Superior de Ciências da Saúde (Escs/Fepecs), Brasília, DF, Brazil

Afiliation 2: Universidade de Brasília (UNB), Brasília, DF, Brazil

Afiliation 3: Centro Universitário de Brasília (UNICEUB), Brasília, DF, Brazil

Maria Rita Carvalho Garbi Novaes, PhD

E-mail: ritanovaes2@gmail.com

Orcid: <https://orcid.org/0000-0002-9366-6017>

Afiliation 1: Escola Superior de Ciências da Saúde (Escs/Fepecs), Brasília, DF, Brazil

Afiliation 2: Universidade de Brasília (UNB), Brasília, DF, Brazil

Paulo Emiliano Bezerra Junior, MD, MsC

E-mail: paulomedical@gmail.com

Orcid: <https://orcid.org/0000-0003-0877-277X>

Afiliation 1: Escola Superior de Ciências da Saúde (Escs/Fepecs), Brasília, DF, Brazil

Afiliation 2: Hospital Regional do Paranoá (SESDF), Brasília, DF, Brazil

NOTE: This preprint reports new research that has not been certified by peer review and should not be used to guide clinical practice.

Ana Paula Monteiro Gomides Reis, MD, Msc, PhD

E-mail: anapmgomides@gmail.com

Orcid: <https://orcid.org/0000-0003-2884-2210>

Afiliation: Centro Universitário de Brasília (UNICEUB), Brasília, DF, Brazil

João Carlos Geber Júnior, MD

E-mail: j.geber@hc.fm.usp.br

Orcid: <https://orcid.org/0000-0001-6028-6221>

Afiliação: Department of Internal Medicine, Hospital das Clinicas HCFMUSP, Faculdade de Medicina, Universidade de São Paulo

Amanda Cristina de Souza, MD

E-mail: amandacrissouza1@gmail.com

Orcid: <https://orcid.org/0000-0002-9757-1816>

Afiliation: Centro Universitário de Brasília (UNICEUB), Brasília, DF, Brazil

Amanda Ribeiro Alves, MD

E-mail: amandazzz@gmail.com

Orcid: <https://orcid.org/0000-0002-8891-4012>

Afiliation: Centro Universitário de Brasília (UNICEUB), Brasília, DF, Brazil

Natalia Mariana Diogenes Silva de Albuquerque, MD

E-mail: nmdsalbuquerque@gmail.com

Orcid: <https://orcid.org/0000-0002-0605-526X>

Afiliation: Centro Universitário de Brasília (UNICEUB), Brasília, DF, Brazil

Júlia Milhomem Mosquéra, MD

E-mail: J.milhomemmosquera@sempreceub.com

Orcid: <https://orcid.org/0000-0002-9693-0899>

Afiliation: Centro Universitário de Brasília (UNICEUB), Brasília, DF, Brazil

Henry Maia Peixoto, Msc, PhD

E-mail: henrymaiap9@gmail.com

Orcid: <https://orcid.org/0000-0001-5982-8855>

Afiliation 1: Universidade de Brasília (UNB), Brasília, DF, Brazil

Afiliation 2: Centro Universitário de Brasília (UNICEUB), Brasília, DF, Brazil

FUNDING

MRCGN

Grant number: 0006400000044/2019-21

Funder: Fundação de Ensino e Pesquisa em Ciências da Saúde

<http://www.fepecs.edu.br/>

AUTHOR CONTRIBUTIONS

Viviane Cristina Uliana Peterle, MD, MsC, PhD

Conceptualization; Data curation; Formal Analysis; Funding Acquisition; Investigation; Methodology; Project Administration; Resources; Software; Validation; Visualization; Writing – Original Draft Preparation; Writing – Review & Editing.

Maria Rita Carvalho Garbi Novaes, PhD

Conceptualization; Data curation; Formal Analysis; Funding Acquisition; Investigation;

76 Methodology; Project Administration; Resources; Software; Validation; Visualization;
 77 Writing – Original Draft Preparation; Writing – Review & Editing.
 78 **Paulo Emiliano Bezerra Junior, MD, MsC 1,6,7,11**
 79 Conceptualization; Methodology; Project; Administration; Visualization
 80 **Ana Paula Monteiro Gomides Reis, MD, MsC, PhD 5,6,8,12**
 81 Investigation; Methodology; Resources; Writing – Review & Editing.
 82 **João Carlos Geber Júnior, MD 2,3,9**
 83 Data curation; Formal Analysis; Software.
 84 **Amanda Cristina de Souza, MD 2,3,5, 8**
 85 Data curation; Formal Analysis; Investigation; Resources.
 86 **Amanda Ribeiro Alves, MD 2,3,5, 8**
 87 Data curation; Formal Analysis; Investigation; Resources.
 88 **Natalia Mariana Diogenes Silva de Albuquerque, MD 2,3,5, 8**
 89 Data curation; Formal Analysis; Investigation; Resources.
 90 **Júlia Milhomem Mosquéra, MD 2,3,5, 8**
 91 Data curation; Formal Analysis; Investigation; Resources.
 92 **Henry Maia Peixoto, MsC, PhD 1-13**
 93 Conceptualization; Data curation; Formal Analysis; Funding Acquisition; Investigation;
 94 Methodology; Project Administration; Resources; Software; Validation; Visualization;
 95 Writing – Original Draft Preparation; Writing – Review & Editing.
 96
 97
 98
 99

Abstract

Introduction: Hip fractures are an important health problem worldwide, and several factors are associated with the mortality. This study aimed to investigate the factors associated with hip fractures in the elderly, based on studies on the population residing in Brazil, and the relationship of fractures with mortality. **Method:** Prospective and retrospective primary observational studies including hospitalized men and/or women aged 60 or older presenting hip fracture due to bone fragility were selected on the Databases. Independent researchers conducted the study selection process and data extraction. A meta-analysis was performed to determine the hospital mortality rate at 90 days, six months, and one year. The Newcastle-Ottawa scale (NOS) was used to assess the quality of the included studies, and the meta-analysis followed the Preferred Reporting Items for Systematic Reviews and Meta-Analyses (PRISMA). **Result:** Twenty-five studies totalizing 3,949 patients were included in the systematic review. The population was mainly composed of women (2,680/67.86%). Most patients were in the age group of 70 to 80 years old. Meta-analysis findings: 1) hospital mortality (19 studies, $n = 3,175$), 10.22% (95% CI 7.27–14.17%; I^2 88%); 2) 90-day mortality (3 studies, $n = 543$), 9.74% (95% CI 3.44–24.62%; I^2 90%); 3) six-month mortality (3 studies, $n = 205$), 24.78% (95% CI 17.07–34.51%; I^2 51%); 4) one-year mortality (13 studies, $n = 2,790$), 21.88% (95% CI 17.5–26.99%; I^2 88%). The factors most related to mortality in the studies were: 1) demographic: Older age, male sex; 2) Attributed to clinical conditions: high scoring in preoperative risk scores, comorbidities, neurological/cognitive disorders, functional status; and 3) hospital factors: preoperative period and infections. **Conclusion:** This review identified variables, including functional status and cognitive changes, related to hip fracture mortality. Knowing these predictors allows for early intervention and planning to adapt health systems to the

growing demands of the elderly population.

Keywords: Hip fracture; Risk factors; Mortality; Systematic review; Aged.

Introduction

Hip fractures are an important health problem worldwide and are associated with a decreased quality of life and reduced survival, especially in the elderly population [1]. The risk of short-term mortality is well established, and post-fracture follow-up studies have already shown high mortality within ten years in women and within 20 years in men, indicating the existing relationship between hip fracture and reduced life expectancy [2].

Several studies have investigated the functional results and mortality in elderly patients with hip fractures, identifying outcome predictors and treatment characteristics worldwide [3,4]. However, evidence also associates factors such as a low socioeconomic status with a higher risk of death following a hip fracture [5]. In addition to significant differences in age groups and the frequency of fractures, sex and country can also influence mortality [6].

Given the aging of populations worldwide, hip fractures will become a progressively more significant public health burden [7]. Developing countries like Brazil have important and recent demographic changes culminating in an accelerated aging process of their populations [8]. Besides, in the past, acute infectious diseases were the cause of most health problems, while chronic diseases currently significantly impact the population [9].

Official sources of health information confirm this analysis. In the last decade, the number of elderly persons in Brazil increased from 9.31% of the total country

population in 2000 to 13.5% in 2018, representing a 45% increase in this age group [10]. In the same period, an increase of 76.9% in hospitalizations due to femur fractures in the Brazilian population over 60 years was observed [11].

A better understanding of the factors associated with hip fractures in the elderly, considering the populations of primary studies on hip fractures carried out in Brazil is required to promote the rational development of intervention strategies, which will may significantly reduce morbimortality morbidity and burdenocio-economic costs. This review aimed to investigate the mortality rate of hip fractures among the elderly in Brazil and its associated factors.

Materials and methods

This study was registered on the International Prospective Register of Systematic Reviews (Prospero) under number CRD42019129953.

Eligibility Criteria

Studies with primary source data, classified in their methodology as observational, prospective or retrospective, including case-control and cohort studies, as well as those classified as longitudinal or cross-sectional, which included men and/or women hospitalized for fractured hip (femoral neck, subtrochanteric, intertrochanteric), aged 60 or older, hospitalized due to hip fracture, in study carried out in Brazil.

Studies performed in secondary databases, including article reviews, studies that did not report a relationship with risk factors or that reported in-hospital mortality in patients with acetabular fractures or other femoral fractures not listed above were excluded. In the case of studies with data related to more than one type of fracture, they were eligible only if it was possible to obtain data only for the subgroup of patients with

hip fracture. Studies that consider analyzes between independent variables without considering the mortality outcome were also excluded.

Sample size was not part of the exclusion criteria. There was no language or publication date restriction. The minimum age adopted for the elderly population was 60 years, as defined in the Brazilian legislation [12].

The main variables outcomes included were: hospital mortality rates (outcome) and the association of clinical characteristics or other potential risk factors (e.g., age, sex, type of fracture and type of surgery, length of hospital stay, comorbidities, infection, and others). Mortality rates were assessed at 30 days, six months, and one year of follow-up when reported.

Information sources and search strategy

Relevant studies indexed until March 19, 2019 were searched in the following databases: MEDLINE (via PubMed), Embase, Virtual Health Library (LILACS, IBECES – ES, CUMED – CU, BINACIS – AR, BDENF – Enfermagem, MedCarib, Peru, Lilacs), SciELO, Web of Science, Scopus, Cochrane, and Biblioteca Digital Brasileira de Teses e Dissertações. References from included studies were used as an additional source of data. The search strategy was developed using indexed terms and their synonyms, including terms for "Aged," "Mortality," and "Hip Fractures."

The search strategy was developed using MeSH terms for PubMed, Emtree terms for Embase, and a combination of keywords, being slightly modified based on each database, as shown in Table 1.

Table 1 – Eletronic search strategies

Database	Search Strategy
MEDLINE (via PubMed)	<p>((("Mortality"[Mesh] OR "Mortality"[tiab] OR "Death"[tiab] OR "mortality[Subheading]" OR "survival"[tiab]))) AND ((("Aged"[Mesh] OR "Aged"[tiab] OR "Elderly"[tiab] OR "Older people"[tiab] OR "Frail Elderly"[Mesh] OR "Frail Elderly"[tiab]))) AND ((("Hip Fractures"[Mesh] OR "Hip Fractur*"[tiab] OR "Trochanteric Fractur*"[tiab] OR "Intertrochanteric Fractur*"[tiab] OR "Subtrochanteric Fractur*"[tiab] OR "Femoral Neck Fractures"[Mesh] OR "Femoral Neck Fractur*"[tiab] OR "Femur Neck Fractur*" [tiab]))</p>
EMBASE	<p>#1 ('mortality'/exp OR 'mortality':ab,ti OR 'survival'/exp OR 'survival':ab,ti OR 'death'/exp OR 'death':ab,ti)</p> <p>#2 ('aged'/exp OR 'aged':ab,ti OR 'elderly':ab,ti OR 'older people':ab,ti OR 'frail elderly'/exp OR 'frail elderly':ab,ti)</p> <p>#3 ('hip fracture'/exp OR 'hip fractur':ab,ti OR 'femur trochanteric fracture'/exp OR 'trochanteric fractur':ab,ti OR 'femur intertrochanteric fracture'/exp OR 'intertrochanteric fractur':ab,ti OR 'femur subtrochanteric fracture'/exp OR 'subtrochanteric fractur':ab,ti OR 'femoral neck fracture'/exp OR 'femoral neck fractur*':ab,ti)</p> <p>#4 (#1 AND #2 AND #3)</p> <p>#5 (#4 AND [embase]/lim NOT [medline]/lim)</p>
Database	Search Strategy
Cochrane	#1 (MeSH descriptor: [Mortality] explode all trees)
CENTRAL	<p>#2 ("Mortality" OR "Death" OR "survival"</p> <p>#3 (MeSH descriptor: [Aged] explode all trees)</p>

	#4 (MeSH descriptor: [Frail Elderly] explode all trees)
	#5 ("Aged" OR "Elderly" OR "Older people" OR "Frail Elderly")
	#6 (MeSH descriptor: [Hip Fractures] explode all trees)
	#7 ("Hip Fractures" OR "Hip Fracture" OR "Trochanteric Fracture" OR "Intertrochanteric Fracture" OR "Subtrochanteric Fracture" OR "Femoral Neck Fractures" OR "Femoral Neck Fracture" OR "Femur Neck Fracture")
	#8 (#1 OR #2)
	#9 (#3 OR #4 OR #5)
	#10 (#6 OR #7)
	#11 (#8 AND #9 AND #10)
	#12 (#11 in "Trials")
VHL (LILACS, IBECs - ES, CUMED - CU, BINACIS, BDENF, MedCarib, Peru)	("Mortality" OR "Death" OR "survival") AND ("Aged" OR "Elderly" OR "Older people" OR "Frail Elderly") AND ("Hip Fractures" OR "Hip Fracture" OR "Femoral Neck Fractures" OR "Femoral Neck Fracture" OR "Trochanteric Fractures" OR "Trochanteric Fracture" OR "Intertrochanteric Fractures" OR "Intertrochanteric Fracture" OR "Subtrochanteric Fractures" OR "Subtrochanteric Fracture")
SciELO	("Mortality" OR "Death" OR "survival") AND ("Aged" OR "Elderly" OR "Older people" OR "Frail Elderly") AND ("Hip Fractures" OR "Hip Fracture" OR "Femoral Neck Fractures" OR "Femoral Neck Fracture" OR "Trochanteric Fractures" OR "Trochanteric Fracture" OR "Intertrochanteric Fractures" OR

	"Intertrochanteric Fracture" OR "Subtrochanteric Fractures" OR "Subtrochanteric Fracture")
Web of Science	("Mortality" OR "Death" OR "survival") AND ("Aged" OR "Elderly" OR "Older people" OR "Frail Elderly") AND ("Hip Fractures" OR "Hip Fracture" OR "Femoral Neck Fractures" OR "Femoral Neck Fracture" OR "Trochanteric Fractures" OR "Trochanteric Fracture" OR "Intertrochanteric Fractures" OR "Intertrochanteric Fracture" OR "Subtrochanteric Fractures" OR "Subtrochanteric Fracture")
Database	Search Strategy
Scopus	(TITLE-ABS-KEY ("Mortality" OR "Death" OR "survival") AND TITLE-ABS-KEY ("Aged" OR "Elderly" OR "Older people" OR "Frail Elderly") AND TITLE-ABS-KEY ("Hip Fractur*" OR "Femoral Neck Fractur*" OR "Trochanteric Fractur*" OR "Intertrochanteric Fractur*" OR "Subtrochanteric Fractur*")) AND (LIMIT-TO (AFFILCOUNTRY , "Brazil"))
BDTD - Biblioteca Digital Brasileira de Teses e Disserta- ções	(Todos os campos:"Mortality" OR "Death" OR "survival" OR "mortalidade" OR "sobrevivência" OR "sobrevida" E Todos os campos:"Aged" OR "Elderly" OR "Older people" OR "Frail Elderly" OR "idosos" OR "idosos" OR "idoso frágil" E Todos os campos:"Hip Fractures" OR "Hip Fracture" OR "Femoral Neck Fractures" OR "Femoral Neck Fracture" OR "Trochanteric Fractures" OR "Trochanteric Fracture" OR "Intertrochanteric Fractures" OR "Intertrochanteric Fracture" OR "Subtrochanteric Fractures" OR "Subtrochanteric Fracture" OR "fratura de quadril" OR "fratura de

colo do fêmur" OR "fratura de colo femoral")

Study selection process

The study selection was conducted by four independent researchers (ACS, ARA, JMM, and NMDSA) in two stages. In the first stage, two reviewers independently evaluated each study using a screening checklist based on the abovementioned eligibility criteria. After removing duplicate studies, the pair of reviewers conducted a title and abstract screening, when studies that did not meet the eligibility criteria were excluded.

Potentially and possibly eligible studies were reviewed in the second stage, with the full-text evaluation. If more than one study had the same study population outcomes, the study with the largest sample size or that showed the closest association between risk factors and mortality was selected. Academic conference abstracts were evaluated case-by-case. Disagreements between the pair of researchers on the inclusion of any study were arbitrated by a third researcher (VCUP).

Data extraction and study quality assessment

The following data were extracted from the selected studies: methodological design, number of patients, characteristics of patients, mean hospital stay, mortality rates, and results of factors associated with mortality as described by the authors of selected studies, which may include association measures such as Odds Ratio (OR), Relative Risk (RR), Hazard Ratio (HR), or *p*-value for association.

Two authors of this study extracted data from the studies separately and independently, with any differences between them being resolved through discussion. If

consensus could not be reached, a third author (MRCGN) reviewed the study at issue and arbitrated.

Study quality assessments were performed using the Newcastle-Ottawa Scale (NOS).

Data analysis

For the quantitative synthesis, the combined mortality rate was estimated through a proportion meta-analysis, employing the inverse of variance method using proportions adjusted by logit transformation. Results were presented as the mortality rate for every 100 patients with the respective 95% confidence interval (CI). Statistical heterogeneity was assessed by the I^2 inconsistency test, in which values higher than 25% and 50% indicated moderate and high heterogeneity, respectively. Calculations were performed using the random-effects model, which uses the heterogeneity among studies to estimate the CI for the combined measure. All analyses were conducted using the statistical packages meta and metafor in the statistical software R (version 3.6.1) accessed through RStudio software (version 1.2.1335), an integrated development environment for R.

Results

The literature search identified 9,979 studies. After removing duplicates and evaluating titles, abstracts, and inclusion criteria, 41 of them were submitted to a full-text reading. Of these, 24 studies were included in the systematic review and 19 studies were included in the meta-analysis. Figure 1 details the selection process and the reasons for exclusion.

Fig 1. Flow diagram of literature searched and selection criteria

Table 2 shows the characteristics of the studies. A total of 3,949 patients were included in the review. In most articles, the study population consisted predominantly of women, and the proportions of women frequency among them ranged from 84% [13] to 16% [14]. There was a male population predominance in one study, n = 47 (84%) [14].

Table 2 – Characteristics of variables analyzed in each study in relation to mortality

VARIABLES	AUTHORS (YEAR)
DEMOGRAPHIC	
Older age	Azevedo, P. S., et al. (2017) ¹⁷ ; De Souza, R. C., et al. (2007) ²⁹ ; Franco, L. G., et al. (2016) ²² ; Garcia, R., et al. (2006) ¹⁴ ; Guerra, M. T. E., et al. (2017) ²³ ; Edelmuth, S. V. C. L., et al. (2018) ²¹ ; Pereira, S. R. M., et al. (2010) ³³ ; Petros, R. S. B., et al. (2017) ³⁴ .
Male sex	Azevedo, P. S., et al. (2017) ¹⁷ ; Garcia, R., et al. (2006) ¹⁴ e Pereira, S. R. M., et al. (2010) ³³ .
CLINICAL	
Pre-surgery score	Azevedo, P. S., et al. (2017) ¹⁷ ; Edelmuth, S. V. C. L., et al. (2018) ²¹ ; Ono, N. K., et al. (2010) ¹³ ; Pereira, S. R. M., et al. (2010) ³³ ; Petros, R. S. B., et al. (2017) ³⁴ ; Ribeiro, T. A., et al. (2014) ²⁴ ; Rudelli, S., et al. (2012) ³⁷ .
VARIABLES	AUTHORS (YEAR)

Functional status	Azevedo, P. S., et al. (2017) ¹⁷ ; Furlaneto, M. E. and Garcez-Leme (2007) ³¹ ; Pereira, S. R. M., et al.(2010) ³³ ; Rocha et. Al. (2008) ²⁵ .
Cognitive disorders	Aguiar, F. D. et al. (2011) ¹⁵ ; Furlaneto, M. E. and Garcez-Leme (2007) ³¹ ; Guerra, M. T. E., et al. (2017) ²³ ; Ricci, G., et al. (2012) ³⁹ .
Comorbidities	Aguiar, F. D. et al. 2011) ¹⁵ ; Arliani, G. G., et al. (2011) ¹⁶ ; Da Cunha, P. T. S., et al. (2008) ¹⁸ ; De Souza, R. C., et al. (2007) ²⁹ ; Furlaneto, M. E. and Garcez-Leme (2007) ³¹ ; Guerra, M. T. E., et al.(2017) ²³ .
<hr/> INTRA-HOSPITAL	
Infections	Aguiar, F. D. et al. (2011) ¹⁵ ; Fortes, et. Al (2008) ³⁰ ; Guerra, M. T. E., et al. (2017) ²³ ; Edelmuth, S. V. C. L., et al. (2018) ²¹ ; Vidal, E. I. O., et al. (2006) ²⁴ .
Pre-operative time	De Souza, R. C., et al. (2007) ²⁹ ; Edelmuth, S. V. C. L., et (2018) ²¹ ; Petros, R. S. B., et al. (2017) ³⁴ ; Pinto, I. P., et al. (2018) ³⁵ .

257

258

259 The predominant age group considering the mean age of patients was 70 to 80
 260 years old [15-27]; one study analyzed nonagenarian patients [28] and one study
 261 included the age group from 50 years old on [29].

262 Regarding geographic regions, 76% of the studies were carried out in the
 263 Southeast of Brazil (15-21, 27, 30-36), 12 in São Paulo, six in Rio de Janeiro, and two

in Minas Gerais (25, 32). Three studies were carried out in the South of Brazil, and only two with the population from the Northeast region of the country (26, 28, 37). Regarding the time variable, 9 (76%) studies (20-24, 27, 32, 34, 35) considered the mean time between the fracture-related events and death as variables in their analyses. Due to the heterogeneity among studies, the associations were described in Table 2.

Through meta-analysis, mortality rates at 90 days, six months, and one year of hospital stay were estimated in 100 patients. All studies reporting mortality rates for these periods were included in the analysis, except for the study that included only nonagenarians, which was considered too different from the other studies. Only one study reported mortality at 30 days, and the rate was 17.65% [25].

The estimated hospital mortality following hip fracture was 10.22% (95% CI 7.27–14.17%; I^2 88%) (Fig 2) considering 19 studies with 3,175 patients analyzed, with high heterogeneity. Only three studies reported mortality at 90 days ($n = 543$), with an estimated rate of 9.74% (95% CI 3.44–24.62%; I^2 90%) (Fig 3), with high heterogeneity. Mortality at six months was also reported only in three studies ($n = 205$), being estimated at 24.78% (95% CI 17.07–34.51%; I^2 51%) (Fig 4). Mortality at one year was reported in 13 studies ($n = 2,790$) and was estimated at 21.88% (95% CI 17.5–26.99%; I^2 88%) (Fig 5). Additionally, one study had a longer follow-up period, with mortality at 24 and 48 months of 26% and 40% in patients without delirium and of 36% and 60% in patients with delirium during hospitalization after a fracture [31].

Fig 2. Forest-plot for hospital mortality following hip fracture ($n = 3,175$)

Fig 3. Forest-plot for hospital mortality following hip fracture at 90 days ($n = 543$)

Fig 4. Forest-plot for hospital mortality following hip fracture at 6 months (n = 205)

Fig 5. Forest-plot for hospital mortality following hip fracture at one year (n= 2,790)

Due to the heterogeneity among the variables analyzed in each study regarding the factors associated with mortality following femur fracture in the elderly in Brazil, the predictors identified in this systematic review were grouped into 1) demographic factors: older age [14,17,20-23,33,34] and male sex [14,17,33]; 2) clinical factors: comorbidities [15,16,18,20,23,31], high scoring in surgical risk assessment scores [13,17,21,24,33,34,38], functional status before fracture [17,31,33,36], and cognitive/neurological disorders [15,23,31,39]; and 3) intra-hospital factors: infections [15,21,23,26,30] and the time between hospitalization and surgery [20,21,34,35]. Only one study addressed prolonged hospitalization as a factor associated with mortality [16] (S1Table).

S1 Table. Characteristics of included studies and mortality following hip fracture.

Discussion

Despite the limitation in the numerical data extraction due to the great variability of studies and to the number of variables analyzed in each study, the review aimed to synthesize the information generated by traumatology and orthopedics services in Brazil in the management of hip fractures over the years and to compare it with the international literature considering the factors associated with the elderly mortality.

The Brazilian National Public Health System has already considered the hospitalization rate for femur fracture in Brazil as an indirect marker of the quality of care for the elderly population [40]. It was due to the correlation between fractures and

the high mortality [1], representing the result of a series of health processes, from primary fall prevention in primary healthcare to hospital and post-discharge rehabilitation strategies [26].

The relationship between aging and comorbidities [41] and comorbidities associated with high mortality following hip fractures are the object of several studies [42,43]. The predominance of long-lived women in the hospitalization profile found in the synthesis of fracture care services in Brazil reinforces the osteoporosis association as a baseline disease. Worldwide, hip fractures can be considered the main complication of mortality and economic burden secondary to osteoporotic disorder [44].

Several studies have reported the postoperative mortality rate after surgical treatment for hip fracture [45]. The variation in mortality rates among the services analyzed also reflects the variation in mortality among the world population [46]. In Brazil, there are scarce accurate data available on the prevalence of osteoporosis, the incidence of falls and fractures, and the costs related to these events [33]. This can be seen in the wide variation in methodologies and variables among the included studies.

The common evidence among Brazilian studies regarding the variables male sex, aging, and comorbidity agrees with the world literature, and all of them are related to increased mortality [47].

The concern of Brazilian studies in evaluating other variables involved and associated with mortality, such as cognitive disorders and functional deficits, is noteworthy. Several studies have investigated the relationship between these variables and mortality in elderly patients following hip fractures, identifying the predictor factors of the patient outcome and the treatment characteristics [48,49].

A better understanding of the factors involved in fracture consolidation is necessary to promote the rational development of preventive therapies, which will significantly reduce morbidity and socio-economic costs [50].

Recommendations already evaluated, such as nutritional intake optimization, rehabilitation programs (at home), and the possibility of having psychological counseling in patients with difficulties in psychosocial dimensions, also apply after hip fracture surgery [51].

An important limitation found in the studies was the time factor. Despite many studies have included this relationship as an analysis variable, related biases, such as public versus private service, the time between fracture and access to traumatology and orthopedics services, conditions to timely provide adequate surgical treatment, clinical conditions of patients, risk prediction for decision making, multi-professional support regarding nutritional, respiratory, and rehabilitation factors, and support for caregivers, sometimes cannot be included in the analyses, but are present as non-measurable associated factors affecting mortality rates over time.

Conclusion

Hip fractures are associated with a high morbimortality burden. Studies on the variables associated with hip fractures in Brazil reflect the country's growing population aging, permeated by multiple comorbidities, with osteoporosis as the baseline disease. The heterogeneity among short-term mortality rates reflects the non-measurable factors related to the management of fractures, while the high incidence of mortality in the long-term post-fracture period shows the impact of the event as a milestone in the life history of patients. Therefore, the studies included in this research throw some light on the quality of health services, as they establish, among others, time and outcome

indicators that require improvement efforts. Initiatives to increase quality in managing patients with hip fracture are important due to the high burden of the population morbimortality. Differences among studies regarding the pre- and postoperative time also suggest a subjectivity in managing fractures, such as in the access to health services, ability to timely perform the required procedure, and hospital support in the pathology management.

REFERENCES

1. Katsoulis M, Benetou V, Karapetyan T, Feskanich D, Grodstein F, Pettersson-Kymmer U, et al. Excess mortality after hip fracture in elderly persons from Europe and the USA: the CHANCES project. *J Intern Med*. 2017;281(3):300-310. doi: 10.1111/joim.12586.
2. Chang W, Lv H, Feng C, Yuwen P, Wei N, Chen W, et al. Preventable risk factors of mortality after hip fracture surgery: Systematic review and meta-analysis. *Int J Surg*. 2018;52:320-328. doi: 10.1016/j.ijssu.2018.02.061.
3. Smith T, Pelpola K, Ball M, Ong A, Myint PK. Pre-operative indicators for mortality following hip fracture surgery: a systematic review and meta-analysis. *Age Ageing*. 2014;43(4):464-71. doi: 10.1093/ageing/afu065.
4. Xu BY, Yan S, Low LL, Vasanwala FF, Low SG. Predictors of poor functional outcomes and mortality in patients with hip fracture: a systematic review. *BMC Musculoskelet Disord*. 2019;20(1):568. doi: 10.1186/s12891-019-2950-0.
5. Valentin G, Pedersen SE, Christensen R, Friis K, Nielsen CP, Bhimjiyani A, et al. Socio-economic inequalities in fragility fracture outcomes: a systematic review

and meta-analysis of prognostic observational studies. *Osteoporos Int.* 2020;31(1):31-42. doi: 10.1007/s00198-019-05143-y.

6. Kannus P, Parkkari J, Sievänen H, Heinonen A, Vuori I, Järvinen M. Epidemiology of hip fractures. *Bone.* 1996;18(1 Suppl):57S-63S. doi: 10.1016/8756-3282(95)00381-9.

7. Cheng SY, Levy AR, Lefaivre KA, Guy P, Kuramoto L, Sobolev B. Geographic trends in incidence of hip fractures: a comprehensive literature review. *Osteoporos Int.* 2011;22(10):2575-86. doi: 10.1007/s00198-011-1596-z.

8. Miranda GMD, Mendes ACG, Silva ALA. Population aging in Brazil: current and future social challenges and consequences. *Rev Bras Geriatr Gerontol.* 2016;19(3):507-19. doi: 10.1590/1809-98232016019.150140

9. Baccaro LF, Conde DM, Costa-Paiva L, Pinto-Neto AM. The epidemiology and management of postmenopausal osteoporosis: a viewpoint from Brazil. *Clin Interv Aging.* 2015;10:583-91. doi: 10.2147/CIA.S54614

10. Instituto Brasileiro de Geografia e Estatística (IBGE). Projeções e estimativas da população do Brasil e das unidades da federação [Internet]. 2016. [cited 2016 Dez 30]. Available from: <http://www.ibge.gov.br/apps/populacao/projecao/>

11. Brasil. Ministério da Saúde. Departamento de Informática do Sistema Único de Saúde (DATASUS) [Internet]. ©2019 [cited 2019 Dec 7]. Available from: <http://www.datasus.gov.br>

12. Brazil. Lei nº 10.741 de 1º de outubro de 2003. Dispõe sobre o Estatuto do Idoso e dá outras providências [Internet]. 2003 (cited 2019 Dez 9). Available from: http://www.planalto.gov.br/ccivil_03/leis/2003/110.741.htm

13. Ono NK, Lima GDAL, Honda EK, Polesello GC, Guimarães RP, Ricioli W Jr, et al. Hemiarthroplasty in the treatment of fractures of the femoral neck. Rev Bras Ortop. 2010;45(4):382-8. doi: 10.1590/S0102-36162010000400007
14. Garcia R, Leme MD, Garcez-Leme LE. Evolution of Brazilian elderly with hip fracture secondary to a fall. Clinics (Sao Paulo). 2006;61(6):539-44. doi: 10.1590/s1807-59322006000600009
15. Aguiar FJ, Nemer DS, Leme LEG. Nutritional status and evolution of orthopedic urgency surgery in the elderly. Acta Ortop Bras. 2011;19(5):293-8. doi: 10.1590/S1413-78522011000500006
16. Arliani GG, Astur DC, Linhares GK, Balbachevsky D, Fernandes HJA, Reis FB. Correlation between time until surgical treatment and mortality among elderly patients with fractures at the proximal end of the femur. Rev Bras Ortop. 2011;46(2):186-94. doi: 10.1590/S0102-36162011000200013
17. Azevedo PS, Gumieiro DN, Polegato BF, Pereira GJ, Silva IA, Pio SM, et al. Goldman score, but not Detsky or Lee indices, predicts mortality 6 months after hip fracture. BMC Musculoskelet Disord. 2017;18(1):134. doi: 10.1186/s12891-017-1480-x.
18. Cunha PTS, Artifon AN, Lima DP, Marques WV, Rahal MA, Ribeiro RR. Hip fractures in the elderly: surgical treatment timing and its correlation with delirium and infection. Acta Ortop Bras. 2008; 16(3):173-6. doi: 10.1590/S1413-78522008000300010
19. Daniachi D, Netto Ados S, Ono NK, Guimarães RP, Polesello GC, Honda EK. Epidemiology of fractures of the proximal third of the femur in elderly patients. Rev Bras Ortop. 2015;50(4):371-7. doi: 10.1016/j.rboe.2015.06.007

20. De Souza RC, Pinheiro RS, Coeli CM, Camargo KR Jr. The Charlson comorbidity index (CCI) for adjustment of hip fracture mortality in the elderly: analysis of the importance of recording secondary diagnoses. *Cad Saude Publ.* 2008;24(2):315-22. doi: 10.1590/S0102-311X2008000200010
21. Edelmuth SVCL, Sorio GN, Sprovieri FAA, Gali JC, Peron SF. Comorbidities, clinical intercurrents, and factors associated with mortality in elderly patients admitted for a hip fracture. *Rev Bras Ortop.* 2018;53(5):543-51. doi:10.1016/j.rboe.2018.07.014
22. Franco LG, Kindermann AL, Tramujas L, Kock KS. Factors associated with mortality among elderly people hospitalized due to femoral fractures. *Rev Bras Ortop.* 2016;51(5):509-14. doi: 10.1016/j.rboe.2016.08.006
23. Guerra MT, Viana RD, Feil L, Feron ET, Maboni J, Vargas AS. One-year mortality of elderly patients with hip fracture surgically treated at a hospital in Southern Brazil. *Rev Bras Ortop.* 2016;52(1):17-23. doi: 10.1016/j.rboe.2016.11.006.
24. Ribeiro TA, Premaor MO, Larangeira JA, Brito LG, Luft M, Guterres LW, Monticielo OA. Predictors of hip fracture mortality at a general hospital in South Brazil: an unacceptable surgical delay. *Clinics (Sao Paulo).* 2014;69(4):253-8. doi: 10.6061/clinics/2014(04)06.
25. Rocha MA, Azer HW, Nascimento VG. Functional evolution of proximal femoral end fractures. *Acta Ortop Bras.* 2008;17(1):17-21. doi: 10.1590/S1413-78522009000100003
26. Vidal EI, Coeli CM, Pinheiro RS, Camargo KR Jr. Mortality within 1 year after hip fracture surgical repair in the elderly according to postoperative period: a

probabilistic record linkage study in Brazil. *Osteoporos Int.* 2006;17(10):1569-76.
doi: 10.1007/s00198-006-0173-3.

27. Vidal E, Moreira-Filho D, Pinheiro R, Souza RC, Almeida L, Camargo K Jr, et al.
Delay from fracture to hospital admission: a new risk factor for hip fracture
mortality? *Osteoporos Int.* 2012;23(12):2847-53. doi: 10.1007/s00198-012-1917-
x.

28. Imbelloni L E, Gouveia MA, Morais GB Jr, Silva A. Outcome after anesthesia
and orthopedic surgery in patients nonagenarians and centenarians. *J Anesth Clin
Res.* 2014;5(6):1-4. doi: 10.4172/2155-6148.1000411

29. Souza RC, Pinheiro RS, Coeli CM, Camargo Junior KR, Torres TZG. Risk
adjustment measures for mortality after hip fracture. *Rev Saude Publ.*
2007;41(4):625-31. doi: 10.1590/S0034-89102007000400017

30. Fortes EM, Raffaelli MP, Bracco OL, Takata ETT, Reis FB, Santili C, et. al. High
morbidity-mortality and reduced level of osteoporosis diagnosis among elderly
people who had hip fractures in São Paulo City. *Arq Bras Endocrinol Metab.*
2008;52(7):1106-14. doi: 10.1590/S0004-27302008000700006

31. Furlaneto ME, Garcez-Leme LE. Impact of delirium on mortality and cognitive
and functional performance among elderly people with femoral fractures. *Clinics
(Sao Paulo).* 2007;62(5):545-52. doi: 10.1590/s1807-59322007000500003.

32. Loures FB, Chaoubah A, Oliveira VM, Almeida AM, Campos EMS, Paiva EP.
Economic analysis of surgical treatment of hip fracture in older adults *Rev Saude
Publ.* 2015;49:12. doi:10.1590/S0034-8910.201504900517

33. Pereira SR, Puts MT, Portela MC, Sayeg MA. The impact of prefracture and hip
fracture characteristics on mortality in older persons in Brazil. *Clin Orthop Relat
Res.* 2010;468(7):1869-83. doi: 10.1007/s11999-009-1147-5.

34. Petros RSB, Ferreira PEV, Petros RSB. Influence of proximal femur fractures in the autonomy and mortality of elderly patients submitted to osteosynthesis with cephalomedullary nail. *Rev Bras Ortop.* 2017;52(Suppl 1):57-62. doi: 10.1016/j.rboe.2017.08.014.
35. Pinto IP, Ferres LFB, Boni G, Falótico GG, Moares M, Puertas EB. Does early surgical fixation of proximal femoral fractures in elderly patients affect mortality rates? *Rev Bras Ortop.* 2019;54(4):392-95. doi: 10.1016/j.rbo.2017.12.015
36. Rocha MA, Carvalho WS, Zanqueta C, Lemos SC. Retrospective epidemiological study of proximal femur fractures treated at the Triângulo Mineiro Medical School Hospital. *Rev Bras Ortop.* 2001;36(8):311-6. doi: 10.1016/j.rbo.2017.12.015
37. Rudelli S, Viriato SP, Meireles TL, Frederico TN. Treatment of displaced neck fractures of the femur with total hip arthroplasty. *J Arthroplasty.* 2012;27(2):246-52. doi: 10.1016/j.arth.2011.04.041.
38. Schiper L, Sadigursky D, Rosario DA, Schiper SP, Passos LC, Faintuch J. Hip fracture prognosis: could bioimpedance be an alternative to conventional nutritional assessment? *Nutr Hosp.* 2011;26(4):904-6.
39. Ricci G, Longaray MP, Gonçalves RZ, Neto Ada S, Manente M, Barbosa LB. Evaluation of the mortality rate one year after hip fracture and factors relating to diminished survival among elderly people. *Rev Bras Ortop.* 2015;47(3):304-9. doi: 10.1016/S2255-4971(15)30103-8.
40. Brasil. Ministério da Saúde. Portaria nº 2.669, de 3 de novembro de 2009. Estabelece as prioridades, objetivos, metas e indicadores de monitoramento e avaliação do Pacto pela Saúde [Internet]. 2009 [cited 2019 Dec 7]. Available from: https://bvsms.saude.gov.br/bvs/saudelegis/gm/2009/prt2669_03_11_2009.html

41. Ensrud KE, Kats AM, Boyd CM, Diem SJ, Schousboe JT, Taylor BC, et al. Association of disease definition, comorbidity burden, and prognosis with hip fracture probability among late-life women. *JAMA Intern Med.* 2019;179(8):1095-1103. doi: 10.1001/jamainternmed.2019.0682.
42. Bekeris J, Wilson LA, Bekere D, Liu J, Poeran J, Zubizarreta N, et al. Trends in comorbidities and complications among patients undergoing hip fracture repair. *Anesth Analg.* 2021;132(2):475-84.
43. Cher EWL, Allen JC, Howe TS, Koh JSB. Comorbidity as the dominant predictor of mortality after hip fracture surgeries. *Osteoporos Int.* 2019;30(12):2477-83. doi: 10.1007/s00198-019-05139-8.
44. Mola-Jimez, Calvo-Lobo C, Idoate-Gil J, Seco-Calvo J. Functionality, comorbidity, complication & surgery of hip fracture in older adults by age distribution. *Rev Assoc Med Bras.* 2018;64(5):420-7.
45. Mariconda M, Costa GG, Cerbasi S, Recano P, Aitanti E, Gambacorta M, et al. The determinants of mortality and morbidity during the year following fracture of the hip: a prospective study. *Bone Joint J.* 2015;97(3):383-90.
46. Kanis JA, Johnell O, De Laet C, Jonsson B, Oden A, Ogelsby AK. International variations in hip fracture probabilities: implications for risk assessment. *J Bone Miner Res.* 2002;17(7):1237-44. doi: 10.1359/jbmr.2002.17.7.1237.
47. Chatterton BD, Moores TS, Ahmad S, Cattell A, Roberts PJ. Cause of death and factors associated with early in-hospital mortality after hip fracture. *Bone Joint J.* 2015;97(2):246-51. doi: 10.1302/0301-620X.97B2.35248.
48. Cornwall R, Gilbert MS, Koval KJ, Strauss E, Siu AL. Functional outcomes and mortality vary among different types of hip fractures: a function of patient

characteristics. Clin Orthop Relat Res. 2004;(425):64-71. doi:
10.1097/01.blo.0000132406.37763.b3.

49. Gómez Navarro R, Sanz-Rosa D, Valdearcos Enguádanos S, Thuissard IJ, Martín Hernández C. [Mortality in a cohort of men with fragility hip fracture in a health area: Associated factors]. 2019;45(7):458-66. doi: 10.1016/j.semerg.2019.04.008.
50. Sebestyén A, Mester S, Vokó Z, Gajdácsi J, Cserhádi P, Speer G, et al. Wintertime surgery increases the risk of conversion to hip arthroplasty after internal fixation of femoral neck fracture. Osteoporos Int. 2015;26(3):1109-17.
51. Peeters CM, Visser E, Van de Ree CL, Gosens T, Den Ouden BL, De Vries J. Quality of life after hip fracture in the elderly: A systematic literature review. Injury. 2016;47(7):1369-82. doi: 10.1016/j.injury.2016.04.018.

FIGURE LEGENDS

Fig 1. Flow diagram of literature searched and selection criteria

Fig 2. Forest-plot for hospital mortality following hip fracture (n= 3,175)

Fig 3. Forest-plot for hospital mortality following hip fracture at 90 days (n = 543)

Fig 4. Forest-plot for hospital mortality following hip fracture at 6 months (n = 205)

Fig 5. Forest-plot for hospital mortality following hip fracture at one year (n= 2,790)

TABLES TITLES

Table 1 – Electronic search strategies

Table 2 – Characteristics of variables analyzed in each study in relation to mortality

SUPPORTING INFORMATION TITLES

S1 Table. Characteristics of included studies and mortality following hip fracture.

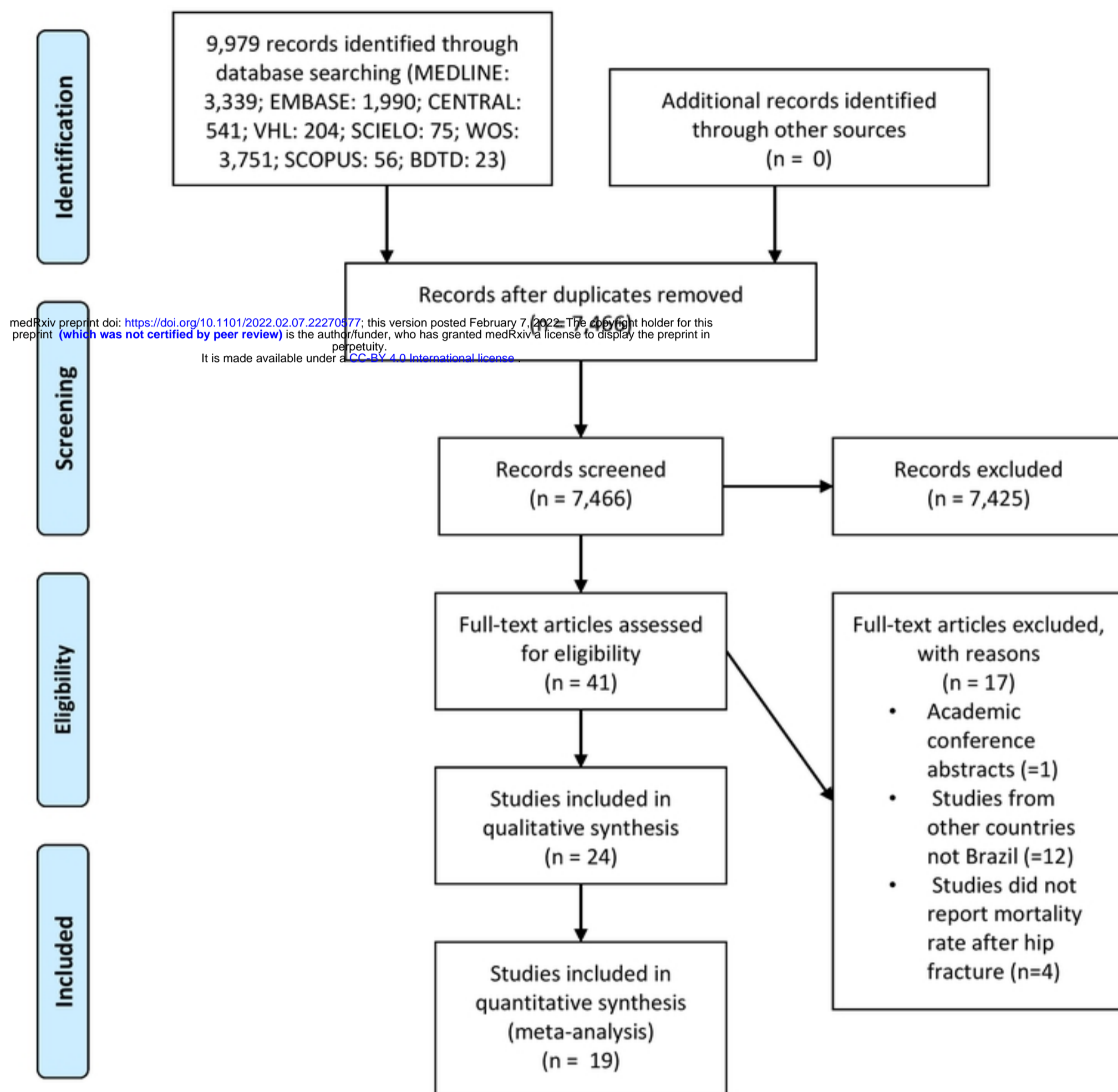
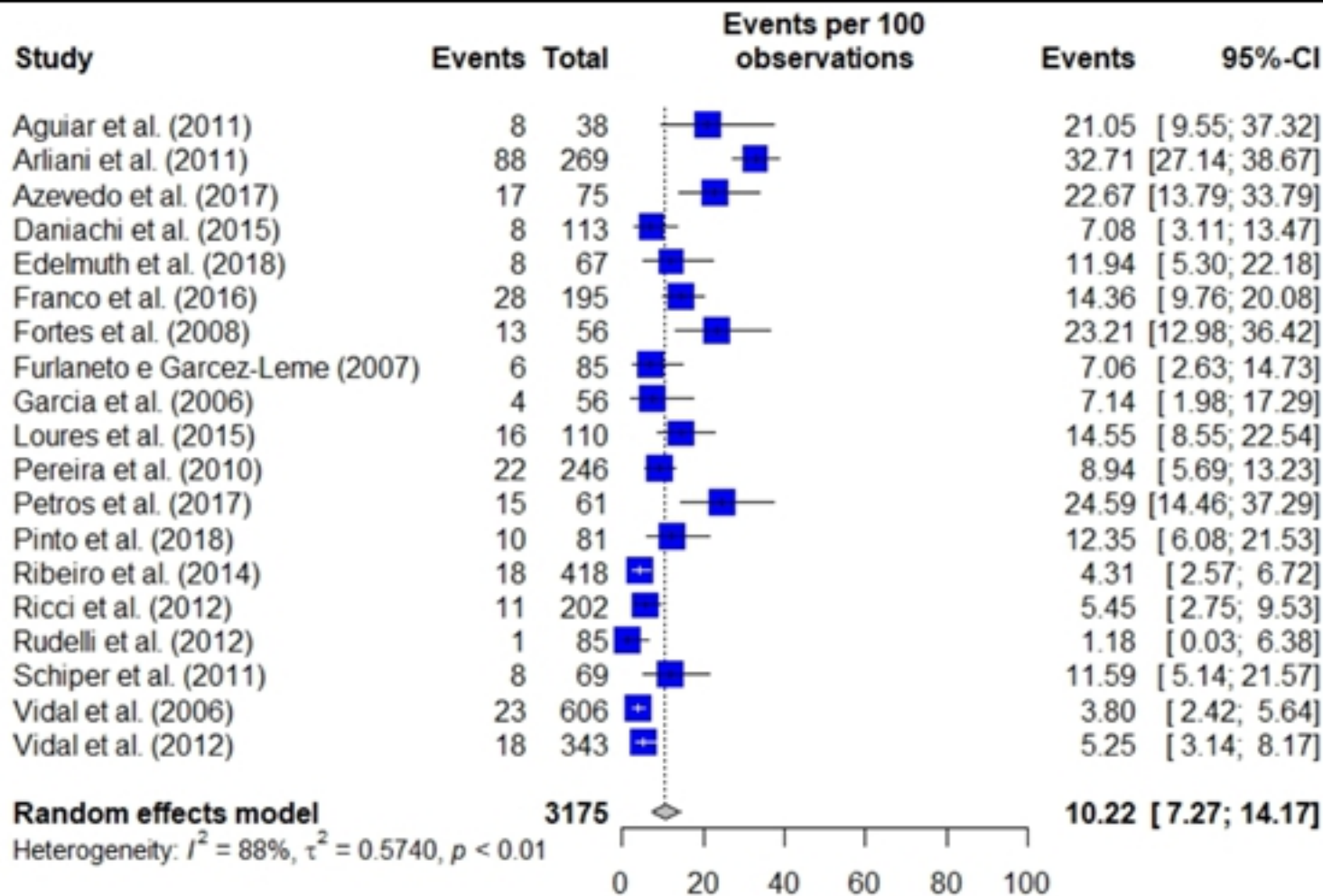
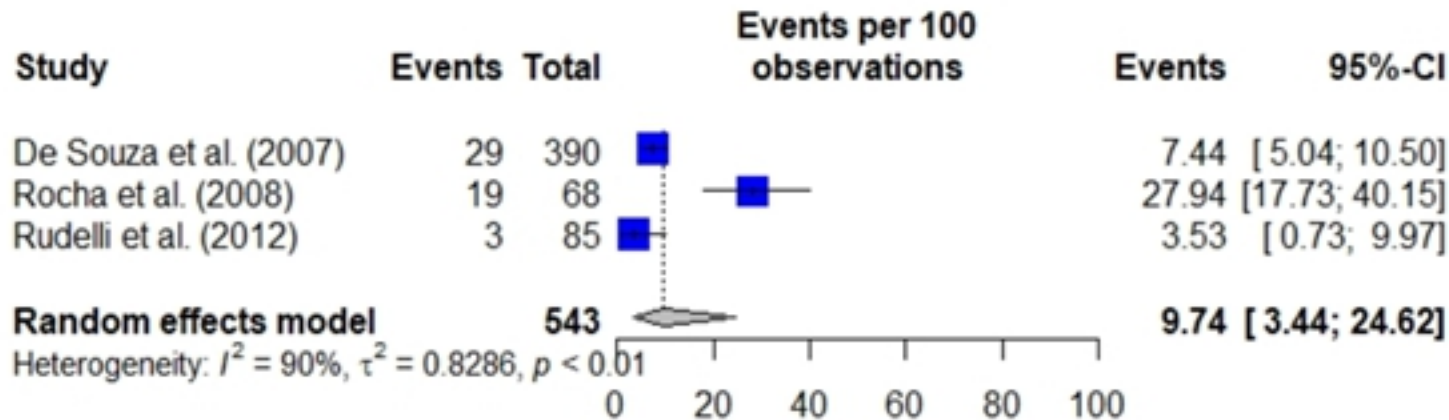


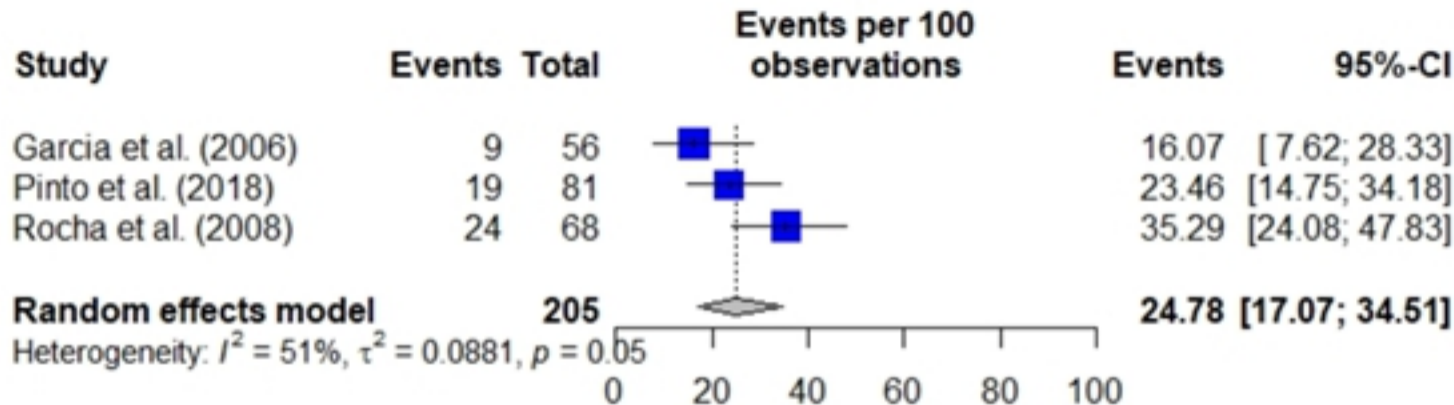
Fig 1. Flow diagram of literature searched and selection criteria



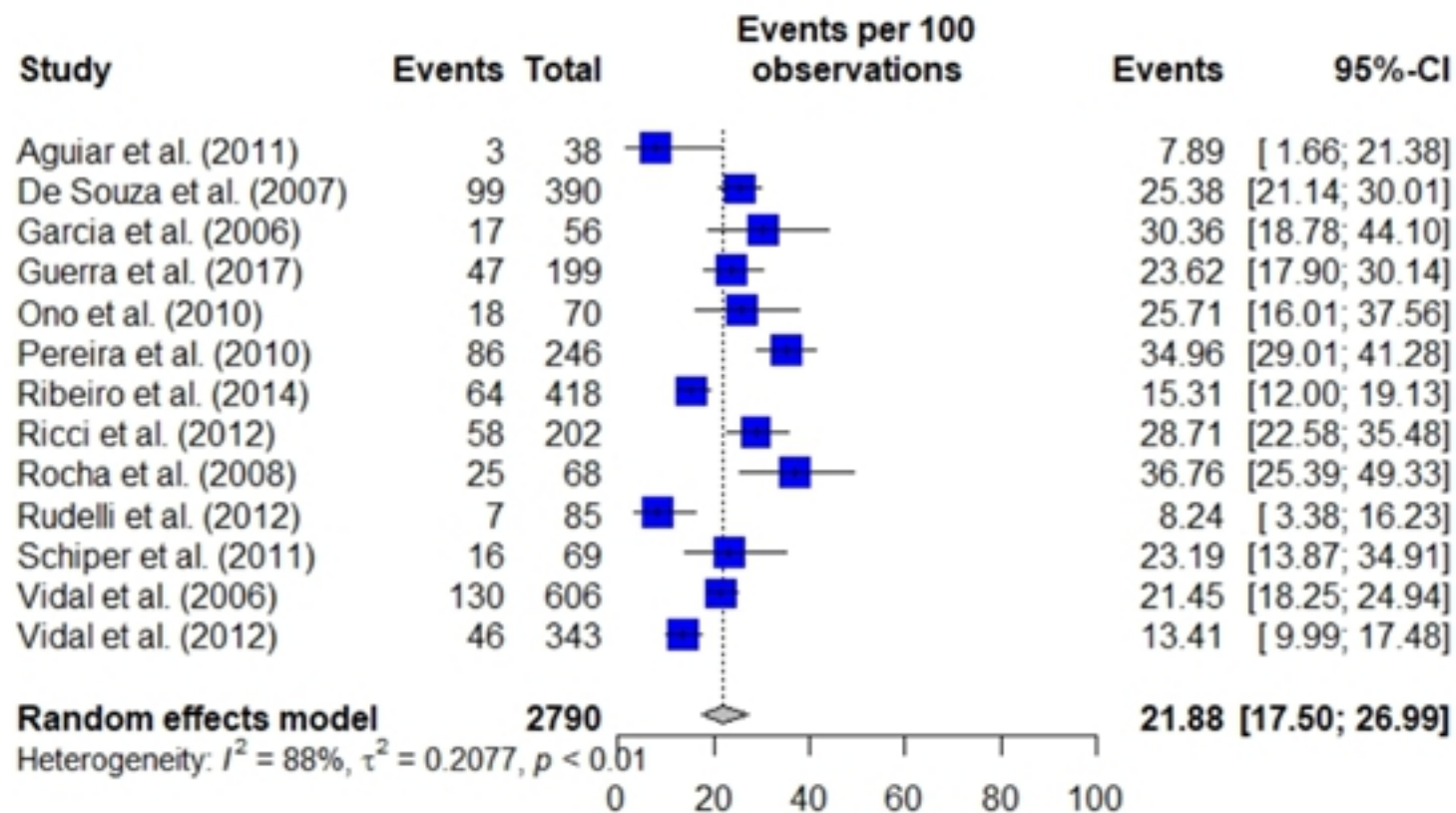
Figure



Figure



Figure



Figure