

Spatial Growth Rate of Emerging SARS-CoV-2 Lineages in England, September 2020–December 2021

M.R. Smallman-Raynor^{1,*}, A.D. Cliff² and The COVID-19 Genomics UK (COG-UK) Consortium^{3,†}

Affiliations

¹ School of Geography, University of Nottingham, United Kingdom

² Department of Geography, University of Cambridge, United Kingdom

³ <https://www.cogconsortium.uk>

*Corresponding author: matthew.smallman-raynor@nottingham.ac.uk

† Full list of consortium names and affiliations are in the appendix

Abstract

This paper uses a robust method of spatial epidemiological analysis to assess the spatial growth rate of multiple lineages of SARS-CoV-2 in the local authority areas of England, September 2020–December 2021. Using the genomic surveillance records of the COVID-19 Genomics UK (COG-UK) Consortium, the analysis identifies a substantial (7.6-fold) difference in the average rate of spatial growth of 37 sample lineages, from the slowest (Delta AY.4.3) to the fastest (Omicron BA.1). Spatial growth of the Omicron (B.1.1.529 and BA) variant was found to be 2.81× faster than the Delta (B.1.617.2 and AY) variant and 3.76× faster than the Alpha (B.1.1.7 and Q) variant. In addition to AY.4.2 (a designated variant under investigation, VUI-21OCT-01), three Delta sublineages (AY.43, AY.98 and AY.120) were found to display a statistically faster rate of spatial growth than the parent lineage and would seem to merit further investigation. We suggest that the monitoring of spatial growth rates is a potentially valuable adjunct to routine assessments of the growth of emerging SARS-CoV-2 lineages in a defined population.

Keywords: COVID-19; England; Geography; SARS-CoV-2; Spatial Analysis

NOTE: This preprint reports new research that has not been certified by peer review and should not be used to guide clinical practice.

Introduction

Emerging lineages of the severe acute respiratory syndrome coronavirus 2 (SARS-CoV-2) have the potential to place significant pressure on public health systems due to increased infectivity, transmissibility, virulence, immune escape or other fitness advantage [1, 2]. Global genomic surveillance has identified >1,700 SARS-CoV-2 lineages since the beginning of the COVID-19 pandemic [3, 4], of which Alpha (B.1.1.7 and Q), Beta (B.1.351), Gamma (P.1), Delta (B.1.617.2 and AY) and Omicron (B.1.1.529 and BA) have been designated as variants of concern by the World Health Organization (WHO) on account of their global public health significance [5]. Additional lineages are currently classified on the basis of properties that are suggestive of an emerging (variants of interest) or possible future (variants under monitoring) risk to global public health [5]. The risk is well illustrated by the recent and rapid emergence of Omicron as the dominant variant in the United Kingdom, South Africa and the United States, among other countries, in late November and December 2021 [6–8].

One important epidemiological facet of an emerging SARS-CoV-2 lineage is its propensity to grow in a defined population [9]. There are well-established methods for assessing the rate of temporal growth by, for example, examining the trajectory of case doubling times or estimating the basic reproduction number, R_0 , of the agent in question [10, 11]. Viewed from a geographical perspective, these measures are essentially aspatial in that they provide very little information on the geographical growth, or spatial expansion, of the associated infection wave. To extend the examination of SARS-CoV-2 growth rates into the spatial domain, the present paper applies a robust method of spatial epidemiological analysis that is known as the *swash-backwash model of the single epidemic wave* [12] to the genomic surveillance records of the COVID-19 Genomics UK (COG-UK) Consortium [13]. Using the spatial sequence of detection of sample variants as a proxy for the spatial wave front of infection, our examination yields estimates of the spatial growth rate of multiple SARS-CoV-2 lineages in the local authority areas of England, September 2020–December 2021.

For a total of 37 sample lineages under investigation, we present evidence of a substantial (7.6-fold) difference in the average rate of spatial growth, from the slowest (Delta

AY.4.3) to the fastest (Omicron BA.1). Whilst the overall results for the Alpha, Delta and Omicron variants are consistent with the documented growth advantages for these lineages, several emergent Delta sublineages (AY.4.2, AY.43, AY.98 and AY.120) are found to have had a statistically significant growth advantage over the parent lineage. To our knowledge, this is the first comparative study of the spatial growth rate of multiple emerging SARS-CoV-2 lineages at the national level. It is also the first report of a spatial growth advantage for the Delta AY.43, AY.98 and AY.120 lineages, and the first to document an apparently reduced spatial growth rate for a substantial number of other AY lineages that emerged in the spring and summer of 2021. We suggest that the monitoring of spatial growth rates is a potentially valuable adjunct to routine assessments of the growth of SARS-CoV-2 lineages in a defined population.

Data and methods

Since September 2020, successive waves of SARS-CoV-2 infection with emerging lineages of the Alpha (September 2020 onset), Delta (March 2021 onset) and Omicron (November 2021 onset) variants have been recorded in England [14–16]. The weekly record of COVID-19 cases to mid-December 2021 is plotted in Figure 1A, whilst the underpinning sequence of variants is depicted in Figure 1B. As Figure 1B shows, Alpha, Delta and Omicron achieved the status of dominant variants in December 2020, May 2021 and December 2021, respectively.

FIGURE 1 NEAR HERE

Data

We draw on the integrated national-level SARS-CoV-2 genomic surveillance records of the COVID-19 Genomics UK (COG-UK) Consortium [13]. Lineage counts by local authority area and week of sample collection for England were accessed from the COG-UK website [18] for a 68-week period, September 2020 (epidemiological week 36, ending 5 September) to December 2021 (epidemiological week 50, ending 18 December) (Figure 1B). The data set included geo-coded information on 979,075 SARS-CoV-2 samples assigned to the 309

Lower Tier Local Authority (LTLA) divisions of England. Here, we define the 309 LTLAs according to their most recent (May 2021) status. Information on the lineage of 20,655 samples (2.1%) was either suppressed (1,105) or not recorded (19,550). Of the remaining 958,420 samples, the majority (93.8%) were classified as belonging to the B.1.1.7 and Q (Alpha, 153,405 samples), B.1.617.2 and AY (Delta, 722,133 samples) and B.1.1.529 and BA (Omicron, 23,137 samples) lineages (Table 1). Samples belonging to these lineages form the basis of all our analysis.

TABLE 1 NEAR HERE

Methods

To assess the spatial growth rate of a given SARS-CoV-2 lineage, we draw on the *swash-backwash model of the single epidemic wave* [12]. In essence, the model represents a spatial derivative of the generic *SIR* mass action models of infectious disease transmission [19]. Using the binary (presence/absence) of a disease, the model (i) allows the disaggregation of an infection wave into phases of spatial expansion and retreat and (ii) provides a means of measuring the phase transitions of geographical units from susceptible *S*, through infective *I* to recovered *R* status. See, for example, Smallman-Raynor and Cliff [20] and Smallman-Raynor, *et al.* [21].

Measuring the spatial growth rate

Full details of the modelling procedure are outlined by Cliff and Haggett [12]. For the purposes of the present analysis, we focus on the spatial expansion phase (that is, the change of state from *S* to *I* across a set geographical units) for a given SARS-CoV-2 lineage. Specifically, let the first week in which the lineage was detected in England be coded as $t = 1$. Subsequent weeks were then coded serially as $t = 2, 3, \dots, T$, where T is the number of weekly periods from the beginning to the end of the detected occurrence of the lineage. For any given geographical unit, we refer to the first week in which the lineage was detected as the *leading edge (LE)* of the infection wave. The average time (in weeks) to the detection of

the lineage across the set of units can then be defined by a time-weighted mean, \bar{t}_{LE} , of the form

$$\bar{t}_{LE} = \frac{1}{N} \sum_{t=1}^T t n_t. \quad (1)$$

Here, n_t is the number of units whose leading edge, *LE*, occurred in week t and $N = \sum n_t$. Formed in this manner, SARS-CoV-2 lineages with relatively *high* rates of spatial expansion (or rapidly developing *LE*) take on relatively *low* values of \bar{t}_{LE} (i.e. short average times to detection). Conversely, lineages with relatively *low* rates of spatial expansion (or slowly developing *LE*) take on relatively *high* values of \bar{t}_{LE} (i.e. long average times to detection).

Application of the model

Equation (1) was used to estimate the spatial growth rate of sample SARS-CoV-2 lineages for which the earliest detection in England occurred in the time period covered by the dataset (September 2020–December 2021) and for which substantial geographical spread had been documented. To ensure the inclusion of sufficient observations for geographical analysis, the sample was limited to lineages that had been detected in at least one-third of the 309 LTLAs by December 2021. Based on these criteria, the sample consisted of 37 lineages. Summary details of the sample, including the number of LTLAs in which each lineage was detected, the total count of detections over the study period, and the earliest date of detection, are provided in Table 1.

For each lineage, equation (1) was fitted with $t = 1$ set to the week of earliest detection in Table 1. In the instance of Omicron, retrospective analysis has identified a lone detection of the BA.1 lineage in epidemiological week 43 of 2021 (week ending 30 October), four weeks prior to the subsequent detection and apparent onset of widespread transmission of the variant in epidemiological week 47 (week ending 27 November). For the purposes of the present analysis, we set week 47 as $t = 1$ for Omicron, but we also report the computed value of \bar{t}_{LE} based on the earlier detection in week 43. Finally, we exclude two LTLAs (City of London and Isles of Scilly) from all analysis on account of the suppression of lineage data due to their small populations. Data analysis was performed in Minitab[®]17 (Minitab Inc.,

Pennsylvania) and data mapping in QGIS 3.10.14-A Coruña (QGIS.org) using Local Authority Districts (May 2021) UK and Regions (December 2020) EN shapefiles from the Office for National Statistics (ONS) [22].

Results

Table 1 confirms that the 37 sample lineages were geographically extensive in their transmission, with 29 having been detected in >150 LTLAs, 21 in >250 LTLAs, 16 in >300 LTLAs, and nine in the complete set of 307 LTLAs under examination. The majority (23) were associated with >1,000 detections, 13 with >10,000 detections and three with >100,000 detections. Delta (B.1.617.2 and AY) was the most common lineage (722,133 detections) and AY.4 the most common sublineage (547,403 detections), with AY lineages accounting for 33 of the spread events under examination. In turn, the majority of lineages emerged (as judged by the date of earliest detections) in the spring and summer of 2021, as the Delta infection wave was evolving both domestically and internationally.

Spatial growth curves and leading edge (*LE*) maps

The upper graphs in Figure 2 plot the count of LTLAs by week of earliest detection of the Alpha (B.1.1.7 and Q), Delta (B.1.617.2 and AY) and Omicron (B.1.1.529 and BA) variants, where weeks are indexed to the earliest detection of the respective variants (Table 1). The lower graphs are spatial growth curves, formed by replotting the information in the upper graphs as a cumulative proportion of LTLAs. Average curves for the set of sample lineages in Table 1 are shown for reference.

FIGURE 2 NEAR HERE

Together, the graphs in Figure 2 portray the temporal development of the spatial leading edges (*LE*) for each variant. The geographical expression of these *LE* is captured by the choropleth maps in Figure 3 which plot the week of earliest detection of each variant in the set of LTLAs. The sequentially more rapid spatial growth of the variants (Alpha → Delta → Omicron) is evidenced by the sequentially steeper spatial growth curves (Figure 2) and the

sequentially shorter periods to earliest detection (Figure 3). The latter feature is emphasized when earliest detections are formed as regional averages in Figure 4.

FIGURE 3 NEAR HERE

FIGURE 4 NEAR HERE

Rates of spatial growth (\bar{t}_{LE})

The right-hand column in Table 1 summarizes the results of the application of equation (1) to each of the sample lineages. Computed values of \bar{t}_{LE} and associated 95% confidence intervals (95% CI) are given, along with an overall average value of \bar{t}_{LE} for the entire sample. As noted above, lineages with relatively *high* rates of spatial expansion (or rapidly developing *LE*) are represented by relatively *low* values of \bar{t}_{LE} (i.e. short average times to detection), while lineages with relatively *low* rates of spatial expansion (or slowly developing *LE*) take on relatively *high* values of \bar{t}_{LE} (i.e. long average times to detection). In this manner, the table confirms the sequential increase in the spatial growth rate for Alpha, Delta and Omicron. On average, the earliest detection of the Alpha variant in a given LTLA occurred at $\bar{t}_{LE} = 9.90$ (95% CI: 9.56, 10.23) weeks after the earliest sampled detection in England. This reduced to 7.40 (95% CI: 7.12, 7.68) weeks for Delta and 2.63 (95% CI: 2.56, 2.71) weeks for Omicron.

Delta AY lineages

Figure 5 is based on the information in Table 1 and plots the values of \bar{t}_{LE} for B.1.617.2 and AY lineages in order, from the lowest (left, high values of \bar{t}_{LE}) to the highest (right, low values of \bar{t}_{LE}) rates of spatial growth. Values are plotted on an inverted vertical scale to facilitate interpretation. The average value of \bar{t}_{LE} , formed across the sample set of lineages in Table 1, is indicated for reference as are the \bar{t}_{LE} for the Alpha (B.1.1.7 and Q), Delta (B.1.617.2 and AY) and Omicron (B.1.1.529 and BA) variants. Spatial growth curves, formed in the manner of Figure 2, are plotted for a sample of 20 AY lineages with relatively high and low rates of spatial growth in Figure 6.

FIGURE 5 NEAR HERE

FIGURE 6 NEAR HERE

There is a 7.6-fold difference in the range of values of \bar{t}_{LE} in Figure 5, from Delta AY.4.3 with the lowest spatial growth rate (19.93 weeks) to Omicron with the highest (2.63 weeks). A group of four AY lineages (AY.4.2, AY.43, AY.98 and AY.120), first detected in the period from mid-May to mid-July 2021, are positioned between Delta and Omicron in Figure 5 and display rates of spatial growth that are significantly higher (as judged by 95% CI) than the aggregate rate for the Delta variant. In contrast, the overwhelming majority of AY lineages display statistically lower – in many instances substantially lower – spatial growth rates (as judged by 95% CI) than the aggregate rate for the Delta variant.

Discussion

Recent experience has underscored the importance of the ongoing tracking, monitoring and analysis of emerging SARS-CoV-2 lineages with a view to mitigating the impacts of the COVID-19 pandemic [23]. We have used a robust model of spatial epidemiological analysis to estimate the rate of spatial growth of multiple lineages of the virus in England over a 68-week period, September 2020–December 2021. We have shown that the Alpha, Delta and Omicron variants took an average of 9.90 weeks, 7.40 weeks and 2.63 weeks, respectively, to reach the set of LTLAs under examination (Table 1 and Figure 5). Expressed in relative terms, the leading spatial edges were 1.34× faster (Delta vs. Alpha), 2.81× faster (Omicron vs. Delta), and 3.76× faster (Omicron vs. Alpha). Our estimates scale to the approximate length of time that Alpha (12 weeks), Delta (8 weeks) and Omicron (3 weeks) took to establish themselves as the dominant variants in England [18], and are consistent with evidence for the fitness advantage of Delta over Alpha and Omicron over Delta [11, 24, 25].

Of the 121 Delta AY lineages detected in England to December 2021 and included in the genomic surveillance records of the COG-UK Consortium, 33 lineages met the geographical criterion for inclusion in the current analysis. In interpreting the results for these lineages, we note that AY designations are phylogenetically defined and do not necessarily denote any fundamental biological differences between the lineages [26]. Moreover, results of the type documented in this paper are context dependent and cannot be interpreted as evidence of a change in biological transmissibility, immune escape or other fitness advantage.

Subject to these caveats, we have identified four AY lineages (AY.4.2, AY.43, AY.98 and AY.120) for which the rate of spatial growth exceeded the aggregate rate for the Delta variant. These lineages had been detected in all (AY.4.2, AY.43 and AY.98) or most (AY.120) of the local authority areas under investigation, and each had been associated with considerably more than 10,000 detections (Table 1). Table 2 summarizes the global status of these four lineages as of 9 January 2022. With the exception of the AY.43 lineage, which was prevalent in a number of European countries and associated with >267,000 detections worldwide, the majority of detections of these lineages originated from the United Kingdom.

TABLE 2 NEAR HERE

Our findings for the AY.4.2 and AY.43 lineages are consistent with their respective designations by the UK Health Security Agency as a distinct variant under investigation (VUI-21OCT-01) and a variant of concern [32, 33]. Preliminary investigations have indicated the AY.4.2 lineage to be associated with a higher growth rate and a higher household secondary attack rate, but with no significant reduction in vaccine effectiveness, as compared to the parent lineage [32, 34]. It remains to be established, however, whether the higher growth rate is due to enhanced transmissibility or is context-dependent [32, 35, 36]. Similarly, the status of the AY.43 lineage in terms of transmission advantage and/or immune escape remains to be determined, although further investigation is merited as new AY.43 sublineages have recently been reported from Brazil [37]. Finally, our identification of a rapid rate of spatial growth for the AY.98 and AY.120 lineages, approximating the estimated rates for AY.4.2 and AY.43, is noteworthy. Whilst very little has been documented on the epidemiological facets of these lineages, both have been identified in a number of countries in Europe and elsewhere (Table 2) and would seem to merit further investigation on the basis of the findings presented here.

With the foregoing exceptions, our analysis has shown that many emerging AY lineages in England in the spring and summer of 2021 were associated with spatial growth rates that were lower (in some instances, substantially lower) than the aggregate rate for the Delta variant (Table 1 and Figure 5). Multiple biological (e.g. reduced infectivity or

transmissibility) and contextual (e.g. progressive expansion of the national COVID-19 vaccination programme) factors may account for this observation. Importantly, there is no evidence of a temporal trend in the observed rates of spatial growth that would be suggestive of either (i) a biological selection pressure in favour of a growth advantage of emerging lineages or (ii) a progressive contextual effect in the form of, for example, increasing levels of vaccination coverage or natural immunity that would serve to retard growth rates.

Our estimates of \bar{t}_{LE} in Table 1 and Figure 5 are contingent on a range of public health interventions that operated to limit the spread of SARS-CoV-2. These interventions included: a tier system of local lockdown in October 2020; two periods of national lockdown (November–December 2020 and January–March 2021) and a phased lifting of national restrictions in the period to July 2021; a phased rollout of the national COVID-19 vaccination programme from December 2020; and the implementation of ‘Plan B’ control guidelines against the Omicron variant in December 2021 [38, 39]. Our results are also subject to the limitations of the available lineage data. Although the COG-UK Consortium genomic surveillance data are recognized for their extent and reliability [40], the data are formed as a sample of positive SARS-CoV-2 test results and are subject to the limitations and biases of sample data. In this context, we note that the cumulative coverage of the COG-UK records for England was estimated at 13.7% of people with positive SARS-CoV-2 test results to October 2021 [41]. Finally, our results are subject to the underpinning assumptions of the analytical procedure. In particular, the computation of \bar{t}_{LE} is dependent on the specification of the index week (i.e. the week that a given lineage was first detected in England) and the degree to which this reflects the date of actual emergence of the lineage in England. The extent to which the sample data accurately track the spatial expansion of the *LE* for a given lineage, the variable contributions of international travel- and community-related transmission to the development of the *LE*, and the geographical starting point(s) of a given lineage in the national transmission network, will also have influenced our results in unknown ways. For example, the early involvement and high degree of geographical connectivity of London and the South East may have served to accelerate the spatial transmission of the Alpha variant in the latter months of 2020 [14]. The observed rapid

spread of the Delta variant may reflect international importations and onwards transmission from multiple different geographical locations in the spring of 2021 [15, 42], whilst early cases of the Omicron variant were observed in highly connected regions at a time of reduced non-pharmaceutical interventions in November and December 2021 [43].

Further insights into the spatial growth and decay of SARS-CoV-2 lineages may be gained by application of the full swash-backwash model, but this is dependent on the substantial spatial retreat of any given lineage from the population. Here we note that, with the exception of AY.10 (last detected in July 2021) and AY.8 and Alpha (B.1.1.7 and Q) (both last detected in August/September 2021), there is evidence of the circulation of all the lineages included in Table 1 in the weeks to December 2021.

We have demonstrated, for the first time, a robust method for assessing and comparing the rate of spatial growth of multiple SARS-CoV-2 lineages in a set of geographical areas. We suggest that this approach represents a potentially valuable adjunct to routine assessments of the growth of emerging SARS-CoV-2 lineages in a defined population.

References

1. Dubey A, *et al.* (2021) Emerging SARS-CoV-2 variants: Genetic variability and clinical implications. *Current Microbiology*; 79(1):20. doi: 10.1007/s00284-021-02724-1.
2. Mukherjee R, Satardekar R (2021) Why are some coronavirus variants more infectious? *Journal of Biosciences*; 46(4):101. doi: 10.1007/s12038-021-00221-y.
3. O'Toole Á, *et al.* (2021) Assignment of epidemiological lineages in an emerging pandemic using the pangolin tool. *Virus Evolution*; 7(2):veab064. doi: 10.1093/ve/veab064.
4. GISAID (<https://www.gisaid.org/hcov19-variants>). Accessed 11 January 2022.
5. World Health Organization, Tracking SARS-CoV-2 Variants (<https://www.who.int/en/activities/tracking-SARS-CoV-2-variants/>). Accessed 11 January 2022.
6. UK Health Security Agency, Variants of Concern or Under Investigation: Data up to 22 December 2021 (<https://www.gov.uk/government/publications/covid-19-variants-genomically-confirmed-case-numbers/variants-distribution-of-case-data-23-december-2021>). Accessed 11 January 2022.
7. Centers for Disease Control and Prevention, COVID Data Tracker (<https://covid.cdc.gov/covid-data-tracker/#nowcast-heading>). Accessed 11 January 2022.
8. Latif AA, *et al.* (2022) *BA.1 Lineage Report*. Outbreak.info (<https://outbreak.info/situation-reports?pango=BA.1>). Accessed 11 January 2022.
9. Ward T, *et al.* (2021) Growth, reproduction numbers and factors affecting the spread of SARS-CoV-2 novel variants of concern in the UK from October 2020 to July 2021: A modelling analysis. *BMJ Open*; 11(11):e056636. doi: 10.1136/bmjopen-2021-056636.
10. UK Health Security Agency (2021) *SARS-CoV-2 Variants of Concern and Variants under Investigation in England Technical Briefing 31*. London: UK Health Security Agency, pp. 43.

11. UK Health Security Agency (2021) *SARS-CoV-2 Variants of Concern and Variants under Investigation in England Technical Briefing 33*. London: UK Health Security Agency, pp. 42.
12. Cliff AD, Haggett P (2006) A swash-backwash model of the single epidemic wave. *Journal of Geographical Systems*; **8**: 227–252.
13. COVID-19 Genomics UK (COG-UK) Consortium (2020) An integrated national scale SARS-CoV-2 genomic surveillance network. *Lancet Microbe*; 1(3):e99-e100. doi: 10.1016/S2666-5247(20)30054-9.
14. Davies NG, *et al.* (2021) Estimated transmissibility and impact of SARS-CoV-2 lineage B.1.1.7 in England. *Science*; 372(6538):eabg3055. doi: 10.1126/science.abg3055.
15. Mishra S, *et al.* (2021) Changing composition of SARS-CoV-2 lineages and rise of Delta variant in England. *EClinicalMedicine*; 39:101064. doi: 10.1016/j.eclinm.2021.101064.
16. UK Health Security Agency (2021) *SARS-CoV-2 Variants of Concern and Variants under Investigation in England Technical Briefing: Update on Hospitalisation and Vaccine Effectiveness for Omicron VOC-21NOV-01 (B.1.1.529)*. London: UK Health Security Agency, pp. 17.
17. GOV.UK Coronavirus (COVID-19) in the UK (<https://coronavirus.data.gov.uk/>). Accessed 11 January 2022.
18. COVID-19 Genomics UK (COG-UK) Consortium, COVID-19 Genomic Surveillance (<https://covid19.sanger.ac.uk/lineages/raw>). Accessed 11 January 2022.
19. Anderson RM, May R (1991) *Infectious Diseases of Humans: Dynamics and Control*. Oxford: Oxford University Press, pp. 757.
20. Smallman-Raynor MR, Cliff AD (2014) Abrupt transition to heightened poliomyelitis epidemicity in England and Wales, 1947–1957, associated with a pronounced increase in the geographical rate of disease propagation. *Epidemiology and Infection*; **142**: 577–591. doi: 10.1017/S0950268813001441.
21. Smallman-Raynor MR, Cliff AD, Stickler PJ. Meningococcal meningitis and coal mining in provincial England: Geographical perspectives on a major epidemic, 1929–

33. *Geographical Analysis*. Published online: 2 February 2021. doi: 10.1111/gean.12272.
22. Office for National Statistics (ONS) Open Geography portal (<https://geoportal.statistics.gov.uk/>). Accessed 11 January 2022.
23. Angeletti S, *et al.* (2021) SARS-CoV-2 AY.4.2 variant circulating in Italy: Genomic preliminary insight. *Journal of Medical Virology*; 12:10.1002/jmv.27451. doi: 10.1002/jmv.27451.
24. He X, *et al.* (2021) The challenges of COVID-19 Delta variant: Prevention and vaccine development. *MedComm (2020)*; 2: 846–854. doi: 10.1002/mco2.95.
25. Mahase E (2021) Covid-19: Do vaccines work against omicron-and other questions answered. *British Medical Journal*; 375:n3062. doi: 10.1136/bmj.n3062.
26. Public Health England (2021) *SARS-CoV-2 Variants of Concern and Variants under Investigation in England Technical Briefing 23*. London: Public Health England, pp. 61.
27. cov.lineages.org, PANGO Lineages: Latest Epidemiological Lineages of SARS-CoV-2 (<https://cov.lineages.org/>). Accessed 11 January 2022.
28. Latif AA, *et al.* (2022) *AY.4.2 Lineage Report*. Outbreak.info (<https://outbreak.info/situation-reports?pango=BA.1>). Accessed 11 January 2022.
29. Latif AA, *et al.* (2022) *AY.43 Lineage Report*. Outbreak.info (<https://outbreak.info/situation-reports?pango=BA.1>). Accessed 11 January 2022.
30. Latif AA, *et al.* (2022) *AY.98 Lineage Report*. Outbreak.info (<https://outbreak.info/situation-reports?pango=BA.1>). Accessed 11 January 2022.
31. Latif AA, *et al.* (2022) *AY.120 Lineage Report*. Outbreak.info (<https://outbreak.info/situation-reports?pango=BA.1>). Accessed 11 January 2022.
32. UK Health Security Agency (2021) *SARS-CoV-2 Variants of Concern and Variants under Investigation in England Technical Briefing 27*. London: UK Health Security Agency, pp. 63.

33. UK Health Security Agency (2021) *SARS-CoV-2 Variants of Concern and Variants under Investigation in England Technical Briefing 29*. London: UK Health Security Agency, pp. 45.
34. Le Page M (2021) New variant gains ground. *New Scientist*; 252(3362):8. doi: 10.1016/S0262-4079(21)02091-1.
35. UK Health Security Agency (2021) *SARS-CoV-2 Variants of Concern and Variants under Investigation in England Technical Briefing 26*. London: UK Health Security Agency, pp. 31.
36. UK Health Security Agency, Variants of Concern or Under Investigation: Data up to 5 January 2022 (<https://www.gov.uk/government/publications/covid-19-variants-genomically-confirmed-case-numbers/variants-distribution-of-case-data-7-january-2022>). Accessed 11 January 2022.
37. Lima ARJ, *et al.* (2021) SARS-CoV-2 genomic monitoring in the São Paulo State unveils new sublineages of the AY.43 strain. medRxiv doi: <https://doi.org/10.1101/2021.11.29.21266819>.
38. Brown J, Kirk-Wade E (2021) *Coronavirus: A History of 'Lockdown Laws' in England*. London: House of Commons Library, pp. 44.
39. NHS England, COVID-19 Vaccinations Archive (<https://www.england.nhs.uk/statistics/statistical-work-areas/covid-19-vaccinations/covid-19-vaccinations-archive/>). Accessed 11 January 2022.
40. Robishaw JD, *et al.* (2021) Genomic surveillance to combat COVID-19: challenges and opportunities. *Lancet Microbe*; 2(9):e481-e484. doi: 10.1016/S2666-5247(21)00121-X.
41. COVID-19 Genomics UK (COG-UK) Consortium (2020), Coverage Reports (<https://www.cogconsortium.uk/news-reports/coverage-reports/>). Accessed 11 January 2022.
42. McCrone JT, *et al.* (2021) Context-specific emergence and growth of the SARS-CoV-2 Delta variant. medRxiv doi: 10.1101/2021.12.14.21267606.

43. UK Health Security Agency (2021) *SARS-CoV-2 Variants of Concern and Variants under Investigation in England. Variant of Concern: Omicron, VOC21NOV-01 (B.1.1.529) Technical Briefing 30*. London: UK Health Security Agency, pp. 40.

Appendix: The COVID-19 Genomics UK (COG-UK) Consortium

Funding acquisition, Leadership and supervision, Metadata curation, Project administration, Samples and logistics, Sequencing and analysis, Software and analysis tools, and Visualisation:

Samuel C Robson ^{13, 84}

Funding acquisition, Leadership and supervision, Metadata curation, Project administration, Samples and logistics, Sequencing and analysis, and Software and analysis tools:

Thomas R Connor ^{11, 74} and Nicholas J Loman ⁴³

Leadership and supervision, Metadata curation, Project administration, Samples and logistics, Sequencing and analysis, Software and analysis tools, and Visualisation:

Tanya Golubchik ⁵

Funding acquisition, Leadership and supervision, Metadata curation, Samples and logistics, Sequencing and analysis, and Visualisation:

Rocio T Martinez Nunez ⁴⁶

Funding acquisition, Leadership and supervision, Project administration, Samples and logistics, Sequencing and analysis, and Software and analysis tools:

David Bonsall ⁵

Funding acquisition, Leadership and supervision, Project administration, Sequencing and analysis, Software and analysis tools, and Visualisation:

Andrew Rambaut ¹⁰⁴

Funding acquisition, Metadata curation, Project administration, Samples and logistics, Sequencing and analysis, and Software and analysis tools:

Luke B Snell ¹²

Leadership and supervision, Metadata curation, Project administration, Samples and logistics, Software and analysis tools, and Visualisation:

Rich Livett ¹¹⁶

Funding acquisition, Leadership and supervision, Metadata curation, Project administration, and Samples and logistics:

Catherine Ludden ^{20, 70}

Funding acquisition, Leadership and supervision, Metadata curation, Samples and logistics, and Sequencing and analysis:

Sally Corden ⁷⁴ and Eleni Nastouli ^{96, 95, 30}

Funding acquisition, Leadership and supervision, Metadata curation, Sequencing and analysis, and Software and analysis tools:

Gaia Nebbia ¹²

Funding acquisition, Leadership and supervision, Project administration, Samples and logistics, and Sequencing and analysis:

Ian Johnston ¹¹⁶

Leadership and supervision, Metadata curation, Project administration, Samples and logistics, and Sequencing and analysis:

Katrina Lythgoe⁵, M. Estee Torok^{19,20} and Ian G Goodfellow²⁴

Leadership and supervision, Metadata curation, Project administration, Samples and logistics, and Visualisation:

Jacqui A Prieto^{97,82} and Kordo Saeed^{97,83}

Leadership and supervision, Metadata curation, Project administration, Sequencing and analysis, and Software and analysis tools:

David K Jackson¹¹⁶

Leadership and supervision, Metadata curation, Samples and logistics, Sequencing and analysis, and Visualisation:

Catherine Houlihan^{96,94}

Leadership and supervision, Metadata curation, Sequencing and analysis, Software and analysis tools, and Visualisation:

Dan Frampton^{94,95}

Metadata curation, Project administration, Samples and logistics, Sequencing and analysis, and Software and analysis tools:

William L Hamilton¹⁹ and Adam A Witney⁴¹

Funding acquisition, Samples and logistics, Sequencing and analysis, and Visualisation:

Giselda Bucca¹⁰¹

Funding acquisition, Leadership and supervision, Metadata curation, and Project administration:

Cassie F Pope^{40,41}

Funding acquisition, Leadership and supervision, Metadata curation, and Samples and logistics:

Catherine Moore⁷⁴

Funding acquisition, Leadership and supervision, Metadata curation, and Sequencing and analysis:

Emma C Thomson⁵³

Funding acquisition, Leadership and supervision, Project administration, and Samples and logistics:

Ewan M Harrison^{116,102}

Funding acquisition, Leadership and supervision, Sequencing and analysis, and Visualisation:

Colin P Smith¹⁰¹

Leadership and supervision, Metadata curation, Project administration, and Sequencing and analysis:

Fiona Rogan⁷⁷

Leadership and supervision, Metadata curation, Project administration, and Samples and logistics:

Shaun M Beckwith⁶, Abigail Murray⁶, Dawn Singleton⁶, Kirstine Eastick³⁷, Liz A Sheridan⁹⁸, Paul Randell⁹⁹, Leigh M Jackson¹⁰⁵, Cristina V Ariani¹¹⁶ and Sónia Gonçalves¹¹⁶

Leadership and supervision, Metadata curation, Samples and logistics, and Sequencing and analysis:

Derek J Fairley^{3,77}, Matthew W Loose¹⁸ and Joanne Watkins⁷⁴

Leadership and supervision, Metadata curation, Samples and logistics, and Visualisation:

Samuel Moses^{25,106}

Leadership and supervision, Metadata curation, Sequencing and analysis, and Software and analysis tools:

Sam Nicholls⁴³, Matthew Bull⁷⁴ and Roberto Amato¹¹⁶

Leadership and supervision, Project administration, Samples and logistics, and Sequencing and analysis:

Darren L Smith^{36,65,66}

Leadership and supervision, Sequencing and analysis, Software and analysis tools, and Visualisation:

David M Aanensen^{14,116} and Jeffrey C Barrett¹¹⁶

Metadata curation, Project administration, Samples and logistics, and Sequencing and analysis:

Dinesh Aggarwal^{20,116,70}, James G Shepherd⁵³, Martin D Curran⁷¹ and Surendra Parmar⁷¹

Metadata curation, Project administration, Sequencing and analysis, and Software and analysis tools:

Matthew D Parker¹⁰⁹

Metadata curation, Samples and logistics, Sequencing and analysis, and Software and analysis tools:

Catryn Williams⁷⁴

Metadata curation, Samples and logistics, Sequencing and analysis, and Visualisation:

Sharon Glaysher⁶⁸

Metadata curation, Sequencing and analysis, Software and analysis tools, and Visualisation:

Anthony P Underwood^{14,116}, Matthew Bashton^{36,65}, Nicole Pacchiarini⁷⁴, Katie F Loveson⁸⁴ and Matthew Byott^{95,96}

Project administration, Sequencing and analysis, Software and analysis tools, and Visualisation:

Alessandro M Carabelli²⁰

Funding acquisition, Leadership and supervision, and Metadata curation:

Kate E Templeton^{56,104}

Funding acquisition, Leadership and supervision, and Project administration:

Thushan I de Silva¹⁰⁹, Dennis Wang¹⁰⁹, Cordelia F Langford¹¹⁶ and John Sillitoe¹¹⁶

Funding acquisition, Leadership and supervision, and Samples and logistics:

Rory N Gunson⁵⁵

Funding acquisition, Leadership and supervision, and Sequencing and analysis:

Simon Cottrell⁷⁴, Justin O'Grady^{75,103} and Dominic Kwiatkowski^{116,108}

Leadership and supervision, Metadata curation, and Project administration:

Patrick J Lillie³⁷

Leadership and supervision, Metadata curation, and Samples and logistics:

Nicholas Cortes³³, Nathan Moore³³, Claire Thomas³³, Phillipa J Burns³⁷, Tabitha W Mahungu⁸⁰ and Steven Liggett⁸⁶

Leadership and supervision, Metadata curation, and Sequencing and analysis:

Angela H Beckett^{13,81} and Matthew TG Holden⁷³

Leadership and supervision, Project administration, and Samples and logistics:

Lisa J Levett³⁴, Husam Osman^{70,35} and Mohammed O Hassan-Ibrahim⁹⁹

Leadership and supervision, Project administration, and Sequencing and analysis:

David A Simpson⁷⁷

Leadership and supervision, Samples and logistics, and Sequencing and analysis:

Meera Chand⁷², Ravi K Gupta¹⁰², Alistair C Darby¹⁰⁷ and Steve Paterson¹⁰⁷

Leadership and supervision, Sequencing and analysis, and Software and analysis tools:

Oliver G Pybus²³, Erik M Volz³⁹, Daniela de Angelis⁵², David L Robertson⁵³, Andrew J Page⁷⁵ and Inigo Martincorena¹¹⁶

Leadership and supervision, Sequencing and analysis, and Visualisation:

Louise Aigrain¹¹⁶ and Andrew R Bassett¹¹⁶

Metadata curation, Project administration, and Samples and logistics:

Nick Wong⁵⁰, Yusri Taha⁸⁹, Michelle J Erkiert⁹⁹ and Michael H Spencer Chapman^{116,102}

Metadata curation, Project administration, and Sequencing and analysis:

Rebecca Dewar⁵⁶ and Martin P McHugh^{56,111}

Metadata curation, Project administration, and Software and analysis tools:

Siddharth Mookerjee^{38,57}

Metadata curation, Project administration, and Visualisation:

Stephen Aplin⁹⁷, Matthew Harvey⁹⁷, Thea Sass⁹⁷, Helen Umpleby⁹⁷ and Helen Wheeler⁹⁷

Metadata curation, Samples and logistics, and Sequencing and analysis:

James P McKenna³, Ben Warne⁹, Joshua F Taylor²², Yasmin Chaudhry²⁴, Rhys Izuagbe²⁴, Aminu S Jahun²⁴, Gregory R Young^{36,65}, Claire McMurray⁴³, Clare M McCann^{65,66}, Andrew Nelson^{65,66} and Scott Elliott⁶⁸

Metadata curation, Samples and logistics, and Visualisation:

Hannah Lowe²⁵

Metadata curation, Sequencing and analysis, and Software and analysis tools:

Anna Price¹¹, Matthew R Crown⁶⁵, Sara Rey⁷⁴, Sunando Roy⁹⁶ and Ben Temperton¹⁰⁵

Metadata curation, Sequencing and analysis, and Visualisation:

Sharif Shaaban⁷³ and Andrew R Hesketh¹⁰¹

Project administration, Samples and logistics, and Sequencing and analysis:

Kenneth G Laing⁴¹, Irene M Monahan⁴¹ and Judith Heaney^{95, 96, 34}

Project administration, Samples and logistics, and Visualisation:

Emanuela Pelosi⁹⁷, Siona Silveira⁹⁷ and Eleri Wilson-Davies⁹⁷

Samples and logistics, Software and analysis tools, and Visualisation:

Helen Fryer⁵

Sequencing and analysis, Software and analysis tools, and Visualization:

Helen Adams⁴, Louis du Plessis²³, Rob Johnson³⁹, William T Harvey^{53, 42}, Joseph Hughes⁵³, Richard J Orton⁵³, Lewis G Spurgin⁵⁹, Yann Bourgeois⁸¹, Chris Ruis¹⁰², Áine O'Toole¹⁰⁴, Marina Gourtovaia¹¹⁶ and Theo Sanderson¹¹⁶

Funding acquisition, and Leadership and supervision:

Christophe Fraser⁵, Jonathan Edgeworth¹², Judith Breuer^{96, 29}, Stephen L Michell¹⁰⁵ and John A Todd¹¹⁵

Funding acquisition, and Project administration:

Michaela John¹⁰ and David Buck¹¹⁵

Leadership and supervision, and Metadata curation:

Kavitha Gajee³⁷ and Gemma L Kay⁷⁵

Leadership and supervision, and Project administration:

Sharon J Peacock^{20, 70} and David Heyburn⁷⁴

Leadership and supervision, and Samples and logistics:

Katie Kitchman³⁷, Alan McNally^{43, 93}, David T Pritchard⁵⁰, Samir Dervisevic⁵⁸, Peter Muir⁷⁰, Esther Robinson^{70, 35}, Barry B Vipond⁷⁰, Newara A Ramadan⁷⁸, Christopher Jeanes⁹⁰, Danni Weldon¹¹⁶, Jana Catalan¹¹⁸ and Neil Jones¹¹⁸

Leadership and supervision, and Sequencing and analysis:

Ana da Silva Filipe⁵³, Chris Williams⁷⁴, Marc Fuchs⁷⁷, Julia Miskelly⁷⁷, Aaron R Jeffries¹⁰⁵, Karen Oliver¹¹⁶ and Naomi R Park¹¹⁶

Metadata curation, and Samples and logistics:

Amy Ash¹, Cherian Koshy¹, Magdalena Barrow⁷, Sarah L Buchan⁷, Anna Mantzouratou⁷, Gemma Clark¹⁵, Christopher W Holmes¹⁶, Sharon Campbell¹⁷, Thomas Davis²¹, Ngee Keong Tan²², Julianne R Brown²⁹, Kathryn A Harris^{29, 2}, Stephen P Kidd³³, Paul R Grant³⁴, Li Xu-McCrae³⁵, Alison Cox^{38, 63}, Pinglawathee Madona^{38, 63}, Marcus Pond^{38, 63}, Paul A Randell^{38, 63}, Karen T Withell⁴⁸, Cheryl Williams⁵¹, Clive Graham⁶⁰, Rebecca Denton-Smith⁶², Emma Swindells⁶², Robyn Turnbull⁶², Tim J Sloan⁶⁷, Andrew Bosworth^{70, 35}, Stephanie Hutchings⁷⁰, Hannah M Pymont⁷⁰, Anna Casey⁷⁶, Liz Ratcliffe⁷⁶, Christopher R Jones^{79, 105}, Bridget A Knight^{79, 105}, Tanzina Haque⁸⁰, Jennifer Hart⁸⁰, Dianne Irish-Tavares⁸⁰, Eric Witele⁸⁰, Craig Mower⁸⁶, Louisa K Watson⁸⁶, Jennifer Collins⁸⁹, Gary Eltringham⁸⁹, Dorian Crudgington⁹⁸, Ben Macklin⁹⁸, Miren Iturriza-Gomara¹⁰⁷, Anita O Lucaci¹⁰⁷ and Patrick C McClure¹¹³

Metadata curation, and Sequencing and analysis:

Matthew Carlile¹⁸, Nadine Holmes¹⁸, Christopher Moore¹⁸, Nathaniel Storey²⁹, Stefan Rooke⁷³, Gonzalo Yebra⁷³, Noel Craine⁷⁴, Malorie Perry⁷⁴, Nabil-Fareed Alikhan⁷⁵, Stephen Bridgett⁷⁷, Kate F Cook⁸⁴, Christopher Fearn⁸⁴, Salman Goudarzi⁸⁴, Ronan A Lyons⁸⁸, Thomas Williams¹⁰⁴, Sam T Haldenby¹⁰⁷, Jillian Durham¹¹⁶ and Steven Leonard¹¹⁶

Metadata curation, and Software and analysis tools:

Robert M Davies¹¹⁶

Project administration, and Samples and logistics:

Rahul Batra¹², Beth Blane²⁰, Moira J Spyer^{30, 95, 96}, Perminder Smith^{32, 112}, Mehmet Yavus^{85, 109}, Rachel J Williams⁹⁶, Adhyana IK Mahanama⁹⁷, Buddhini Samaraweera⁹⁷, Sophia T Girgis¹⁰², Samantha E Hansford¹⁰⁹, Angie Green¹¹⁵, Charlotte Beaver¹¹⁶, Katherine L Bellis^{116, 102}, Matthew J Dorman¹¹⁶, Sally Kay¹¹⁶, Liam Prestwood¹¹⁶ and Shavanthi Rajatileka¹¹⁶

Project administration, and Sequencing and analysis:

Joshua Quick⁴³

Project administration, and Software and analysis tools:

Radoslaw Poplawski⁴³

Samples and logistics, and Sequencing and analysis:

Nicola Reynolds⁸, Andrew Mack¹¹, Arthur Morriss¹¹, Thomas Whalley¹¹, Bindi Patel¹², Iliana Georgana²⁴, Myra Hosmillo²⁴, Malte L Pinckert²⁴, Joanne Stockton⁴³, John H Henderson⁶⁵, Amy Hollis⁶⁵, William Stanley⁶⁵, Wen C Yew⁶⁵, Richard Myers⁷², Alicia Thornton⁷², Alexander Adams⁷⁴, Tara Annett⁷⁴, Hibo Asad⁷⁴, Alec Birchley⁷⁴, Jason Coombes⁷⁴, Johnathan M Evans⁷⁴, Laia Fina⁷⁴, Bree Gatica-Wilcox⁷⁴, Lauren Gilbert⁷⁴, Lee Graham⁷⁴, Jessica Hey⁷⁴, Ember Hilvers⁷⁴, Sophie Jones⁷⁴, Hannah Jones⁷⁴, Sara Kumziene-Summerhayes⁷⁴, Caoimhe McKerr⁷⁴, Jessica Powell⁷⁴, Georgia Pugh⁷⁴, Sarah Taylor⁷⁴, Alexander J Trotter⁷⁵, Charlotte A Williams⁹⁶, Leanne M Kermack¹⁰², Benjamin H Foulkes¹⁰⁹, Marta Gallis¹⁰⁹, Hailey R Hornsby¹⁰⁹, Stavroula F Louka¹⁰⁹, Manoj Pohare¹⁰⁹, Paige Wolverson¹⁰⁹, Peijun Zhang¹⁰⁹, George MacIntyre-Cockett¹¹⁵, Amy Trebes¹¹⁵, Robin J Moll¹¹⁶, Lynne Ferguson¹¹⁷, Emily J Goldstein¹¹⁷, Alasdair Maclean¹¹⁷ and Rachael Tomb¹¹⁷

Samples and logistics, and Software and analysis tools:

Igor Starinskij⁵³

Sequencing and analysis, and Software and analysis tools:

Laura Thomson⁵, Joel Southgate^{11, 74}, Moritz UG Kraemer²³, Jayna Raghvani²³, Alex E Zarebski²³, Olivia Boyd³⁹, Lily Geidelberg³⁹, Chris J Illingworth⁵², Chris Jackson⁵², David Pascall⁵², Sreenu Vattipally⁵³, Timothy M Freeman¹⁰⁹, Sharon N Hsu¹⁰⁹, Benjamin B Lindsey¹⁰⁹, Keith James¹¹⁶, Kevin Lewis¹¹⁶, Gerry Tonkin-Hill¹¹⁶ and Jaime M Tovar-Corona¹¹⁶

Sequencing and analysis, and Visualisation:

MacGregor Cox²⁰

Software and analysis tools, and Visualisation:

Khalil Abudahab^{14, 116}, Mirko Menegazzo¹⁴, Ben EW Taylor MEng^{14, 116}, Corin A Yeats¹⁴, Afrida Mukaddas⁵³, Derek W Wright⁵³, Leonardo de Oliveira Martins⁷⁵, Rachel Colquhoun¹⁰⁴, Verity Hill¹⁰⁴, Ben Jackson¹⁰⁴, JT McCrone¹⁰⁴, Nathan Medd¹⁰⁴, Emily Scher¹⁰⁴ and Jon-Paul Keatley¹¹⁶

Leadership and supervision:

Tanya Curran ³, Sian Morgan ¹⁰, Patrick Maxwell ²⁰, Ken Smith ²⁰, Sahar Eldirdiri ²¹, Anita Kenyon ²¹, Alison H Holmes ^{38, 57}, James R Price ^{38, 57}, Tim Wyatt ⁶⁹, Alison E Mather ⁷⁵, Timofey Skvortsov ⁷⁷ and John A Hartley ⁹⁶

Metadata curation:

Martyn Guest ¹¹, Christine Kitchen ¹¹, Ian Merrick ¹¹, Robert Munn ¹¹, Beatrice Bertolusso ³³, Jessica Lynch ³³, Gabrielle Vernet ³³, Stuart Kirk ³⁴, Elizabeth Wastnedge ⁵⁶, Rachael Stanley ⁵⁸, Giles Idle ⁶⁴, Declan T Bradley ^{69, 77}, Jennifer Poyner ⁷⁹ and Matilde Mori ¹¹⁰

Project administration:

Owen Jones ¹¹, Victoria Wright ¹⁸, Ellena Brooks ²⁰, Carol M Churcher ²⁰, Mireille Fragakis ²⁰, Katerina Galai ^{20, 70}, Andrew Jermy ²⁰, Sarah Judges ²⁰, Georgina M McManus ²⁰, Kim S Smith ²⁰, Elaine Westwick ²⁰, Stephen W Attwood ²³, Frances Bolt ^{38, 57}, Alisha Davies ⁷⁴, Elen De Lacy ⁷⁴, Fatima Downing ⁷⁴, Sue Edwards ⁷⁴, Lizzie Meadows ⁷⁵, Sarah Jeremiah ⁹⁷, Nikki Smith ¹⁰⁹ and Luke Foulser ¹¹⁶

Samples and logistics:

Themoula Charalampous ^{12, 46}, Amita Patel ¹², Louise Berry ¹⁵, Tim Boswell ¹⁵, Vicki M Fleming ¹⁵, Hannah C Howson-Wells ¹⁵, Amelia Joseph ¹⁵, Manjinder Khakh ¹⁵, Michelle M Lister ¹⁵, Paul W Bird ¹⁶, Karlie Fallon ¹⁶, Thomas Helmer ¹⁶, Claire L McMurray ¹⁶, Mina Odedra ¹⁶, Jessica Shaw ¹⁶, Julian W Tang ¹⁶, Nicholas J Willford ¹⁶, Victoria Blakey ¹⁷, Veena Raviprakash ¹⁷, Nicola Sheriff ¹⁷, Lesley-Anne Williams ¹⁷, Theresa Feltwell ²⁰, Luke Bedford ²⁶, James S Cargill ²⁷, Warwick Hughes ²⁷, Jonathan Moore ²⁸, Susanne Stonehouse ²⁸, Laura Atkinson ²⁹, Jack CD Lee ²⁹, Dr Divya Shah ²⁹, Adela Alcolea-Medina ^{32, 112}, Natasha Ohemeng-Kumi ^{32, 112}, John Ramble ^{32, 112}, Jasveen Sehmi ^{32, 112}, Rebecca Williams ³³, Wendy Chatterton ³⁴, Monika Pusok ³⁴, William Everson ³⁷, Anibolina Castigador ⁴⁴, Emily Macnaughton ⁴⁴, Kate El Bouzidi ⁴⁵, Temi Lampejo ⁴⁵, Malur Sudhanva ⁴⁵, Cassie Breen ⁴⁷, Graciela Sluga ⁴⁸, Shazaad SY Ahmad ^{49, 70}, Ryan P George ⁴⁹, Nicholas W Machin ^{49, 70}, Debbie Binns ⁵⁰, Victoria James ⁵⁰, Rachel Blacow ⁵⁵, Lindsay Coupland ⁵⁸, Louise Smith ⁵⁹, Edward Barton ⁶⁰, Debra Padgett ⁶⁰, Garren Scott ⁶⁰, Aidan Cross ⁶¹, Mariyam Mirfenderesky ⁶¹, Jane Greenaway ⁶², Kevin Cole ⁶⁴, Phillip Clarke ⁶⁷, Nichola Duckworth ⁶⁷, Sarah Walsh ⁶⁷, Kelly Bicknell ⁶⁸, Robert Impey ⁶⁸, Sarah Wyllie ⁶⁸, Richard Hopes ⁷⁰, Chloe Bishop ⁷², Vicki Chalker ⁷², Ian Harrison ⁷², Laura Gifford ⁷⁴, Zoltan Molnar ⁷⁷, Cressida Auckland ⁷⁹, Cariad Evans ^{85, 109}, Kate Johnson ^{85, 109}, David G Partridge ^{85, 109}, Mohammad Raza ^{85, 109}, Paul Baker ⁸⁶, Stephen Bonner ⁸⁶, Sarah Essex ⁸⁶, Leanne J Murray ⁸⁶, Andrew I Lawton ⁸⁷, Shirelle Burton-Fanning ⁸⁹, Brendan Al Payne ⁸⁹, Sheila Waugh ⁸⁹, Andrea N Gomes ⁹¹, Maimuna Kimuli ⁹¹, Darren R Murray ⁹¹, Paula Ashfield ⁹², Donald Dobie ⁹², Fiona Ashford ⁹³, Angus Best ⁹³, Liam Crawford ⁹³, Nicola Cumley ⁹³, Megan Mayhew ⁹³, Oliver Megram ⁹³, Jeremy Mirza ⁹³, Emma Moles-Garcia ⁹³, Benita Percival ⁹³, Megan Driscoll ⁹⁶, Leah Ensell ⁹⁶, Helen L Lowe ⁹⁶, Laurentiu Maftai ⁹⁶, Matteo Mondani ⁹⁶, Nicola J Chaloner ⁹⁹, Benjamin J Cogger ⁹⁹, Lisa J Easton ⁹⁹, Hannah Huckson ⁹⁹, Jonathan Lewis ⁹⁹, Sarah Lowdon ⁹⁹, Cassandra S Malone ⁹⁹, Florence Munemo ⁹⁹, Manasa Mutingwende ⁹⁹, Roberto Nicodemi ⁹⁹, Olga Podplomyk ⁹⁹, Thomas Somassa ⁹⁹, Andrew Beggs ¹⁰⁰, Alex Richter ¹⁰⁰, Claire Cormie ¹⁰², Joana Dias ¹⁰², Sally Forrest ¹⁰², Ellen E Higginson ¹⁰², Mailis Maes ¹⁰², Jamie Young ¹⁰², Rose K Davidson ¹⁰³, Kathryn A Jackson ¹⁰⁷, Lance Turtle ¹⁰⁷, Alexander J Keeley ¹⁰⁹, Jonathan Ball ¹¹³, Timothy Byaruhanga ¹¹³, Joseph G Chappell ¹¹³, Jayasree Dey ¹¹³, Jack D Hill ¹¹³, Emily J Park ¹¹³, Arezou Fanaie ¹¹⁴, Rachel A Hilson ¹¹⁴, Geraldine Yaze ¹¹⁴ and Stephanie Lo ¹¹⁶

Sequencing and analysis:

Safiah Afifi ¹⁰, Robert Beer ¹⁰, Joshua Maksimovic ¹⁰, Kathryn McCluggage ¹⁰, Karla Spellman ¹⁰, Catherine Bresner ¹¹, William Fuller ¹¹, Angela Marchbank ¹¹, Trudy Workman ¹¹, Ekaterina Shelest ^{13, 81}, Johnny Debebe ¹⁸, Fei Sang ¹⁸, Marina Escalera Zamudio ²³, Sarah Francois ²³, Bernardo Gutierrez ²³, Tetyana I Vasylyeva ²³, Flavia Flaviani ³¹, Manon Ragonnet-Cronin ³⁹, Katherine L Smollett ⁴², Alice Broos ⁵³, Daniel Mair ⁵³, Jenna Nichols ⁵³, Kyriaki Nomikou ⁵³, Lily Tong ⁵³, Ioulia Tsatsani ⁵³, Sarah

O'Brien⁵⁴, Steven Rushton⁵⁴, Roy Sanderson⁵⁴, Jon Perkins⁵⁵, Seb Cotton⁵⁶, Abbie Gallagher⁵⁶, Elias Allara^{70, 102}, Clare Pearson^{70, 102}, David Bibby⁷², Gavin Dabrera⁷², Nicholas Ellaby⁷², Eileen Gallagher⁷², Jonathan Hubb⁷², Angie Lackenby⁷², David Lee⁷², Nikos Manesis⁷², Tamyo Mbisa⁷², Steven Platt⁷², Katherine A Twohig⁷², Mari Morgan⁷⁴, Alp Aydin⁷⁵, David J Baker⁷⁵, Ebenezer Foster-Nyarko⁷⁵, Sophie J Prosolek⁷⁵, Steven Rudder⁷⁵, Chris Baxter⁷⁷, Sílvia F Carvalho⁷⁷, Deborah Lavin⁷⁷, Arun Mariappan⁷⁷, Clara Radulescu⁷⁷, Aditi Singh⁷⁷, Miao Tang⁷⁷, Helen Morcrette⁷⁹, Nadua Bayzid⁹⁶, Marius Cotic⁹⁶, Carlos E Balcazar¹⁰⁴, Michael D Gallagher¹⁰⁴, Daniel Maloney¹⁰⁴, Thomas D Stanton¹⁰⁴, Kathleen A Williamson¹⁰⁴, Robin Manley¹⁰⁵, Michelle L Michelsen¹⁰⁵, Christine M Sambles¹⁰⁵, David J Studholme¹⁰⁵, Joanna Warwick-Dugdale¹⁰⁵, Richard Eccles¹⁰⁷, Matthew Gemmell¹⁰⁷, Richard Gregory¹⁰⁷, Margaret Hughes¹⁰⁷, Charlotte Nelson¹⁰⁷, Lucille Rainbow¹⁰⁷, Edith E Vamos¹⁰⁷, Hermione J Webster¹⁰⁷, Mark Whitehead¹⁰⁷, Claudia Wierzbicki¹⁰⁷, Adrienn Angyal¹⁰⁹, Luke R Green¹⁰⁹, Max Whiteley¹⁰⁹, Emma Betteridge¹¹⁶, Iraad F Bronner¹¹⁶, Ben W Farr¹¹⁶, Scott Goodwin¹¹⁶, Stefanie V Lensing¹¹⁶, Shane A McCarthy^{116, 102}, Michael A Quail¹¹⁶, Diana Rajan¹¹⁶, Nicholas M Redshaw¹¹⁶, Carol Scott¹¹⁶, Lesley Shirley¹¹⁶ and Scott AJ Thurston¹¹⁶

Software and analysis tools:

Will Rowe⁴³, Amy Gaskin⁷⁴, Thanh Le-Viet⁷⁵, James Bonfield¹¹⁶, Jennifer Liddle¹¹⁶ and Andrew Whitwham¹¹⁶

1 Barking, Havering and Redbridge University Hospitals NHS Trust, **2** Barts Health NHS Trust, **3** Belfast Health & Social Care Trust, **4** Betsi Cadwaladr University Health Board, **5** Big Data Institute, Nuffield Department of Medicine, University of Oxford, **6** Blackpool Teaching Hospitals NHS Foundation Trust, **7** Bournemouth University, **8** Cambridge Stem Cell Institute, University of Cambridge, **9** Cambridge University Hospitals NHS Foundation Trust, **10** Cardiff and Vale University Health Board, **11** Cardiff University, **12** Centre for Clinical Infection and Diagnostics Research, Department of Infectious Diseases, Guy's and St Thomas' NHS Foundation Trust, **13** Centre for Enzyme Innovation, University of Portsmouth, **14** Centre for Genomic Pathogen Surveillance, University of Oxford, **15** Clinical Microbiology Department, Queens Medical Centre, Nottingham University Hospitals NHS Trust, **16** Clinical Microbiology, University Hospitals of Leicester NHS Trust, **17** County Durham and Darlington NHS Foundation Trust, **18** Deep Seq, School of Life Sciences, Queens Medical Centre, University of Nottingham, **19** Department of Infectious Diseases and Microbiology, Cambridge University Hospitals NHS Foundation Trust, **20** Department of Medicine, University of Cambridge, **21** Department of Microbiology, Kettering General Hospital, **22** Department of Microbiology, South West London Pathology, **23** Department of Zoology, University of Oxford, **24** Division of Virology, Department of Pathology, University of Cambridge, **25** East Kent Hospitals University NHS Foundation Trust, **26** East Suffolk and North Essex NHS Foundation Trust, **27** East Sussex Healthcare NHS Trust, **28** Gateshead Health NHS Foundation Trust, **29** Great Ormond Street Hospital for Children NHS Foundation Trust, **30** Great Ormond Street Institute of Child Health (GOS ICH), University College London (UCL), **31** Guy's and St. Thomas' Biomedical Research Centre, **32** Guy's and St. Thomas' NHS Foundation Trust, **33** Hampshire Hospitals NHS Foundation Trust, **34** Health Services Laboratories, **35** Heartlands Hospital, Birmingham, **36** Hub for Biotechnology in the Built Environment, Northumbria University, **37** Hull University Teaching Hospitals NHS Trust, **38** Imperial College Healthcare NHS Trust, **39** Imperial College London, **40** Infection Care Group, St George's University Hospitals NHS Foundation Trust, **41** Institute for Infection and Immunity, St George's University of London, **42** Institute of Biodiversity, Animal Health & Comparative Medicine, **43** Institute of Microbiology and Infection, University of Birmingham, **44** Isle of Wight NHS Trust, **45** King's College Hospital NHS Foundation Trust, **46** King's College London, **47** Liverpool Clinical Laboratories, **48** Maidstone and Tunbridge Wells NHS Trust, **49** Manchester University NHS Foundation Trust, **50** Microbiology Department, Buckinghamshire Healthcare NHS Trust, **51** Microbiology, Royal Oldham Hospital, **52** MRC Biostatistics Unit, University of Cambridge, **53** MRC-University of Glasgow Centre for Virus Research, **54** Newcastle University, **55** NHS Greater Glasgow and Clyde, **56** NHS Lothian, **57** NIHR Health Protection Research Unit in HCAI and AMR, Imperial College London, **58** Norfolk and Norwich University Hospitals NHS Foundation Trust, **59** Norfolk County Council, **60** North Cumbria Integrated Care NHS Foundation Trust, **61** North Middlesex University Hospital NHS Trust, **62** North Tees and Hartlepool NHS Foundation Trust, **63** North West London Pathology, **64** Northumbria Healthcare NHS Foundation Trust, **65** Northumbria University, **66** NU-OMICS, Northumbria University, **67** Path Links, Northern Lincolnshire and Goole NHS Foundation Trust, **68** Portsmouth Hospitals University NHS Trust, **69** Public Health Agency, Northern Ireland, **70** Public Health England, **71** Public Health England, Cambridge, **72** Public Health England,

Colindale, **73** Public Health Scotland, **74** Public Health Wales, **75** Quadram Institute Bioscience, **76** Queen Elizabeth Hospital, Birmingham, **77** Queen's University Belfast, **78** Royal Brompton and Harefield Hospitals, **79** Royal Devon and Exeter NHS Foundation Trust, **80** Royal Free London NHS Foundation Trust, **81** School of Biological Sciences, University of Portsmouth, **82** School of Health Sciences, University of Southampton, **83** School of Medicine, University of Southampton, **84** School of Pharmacy & Biomedical Sciences, University of Portsmouth, **85** Sheffield Teaching Hospitals NHS Foundation Trust, **86** South Tees Hospitals NHS Foundation Trust, **87** Southwest Pathology Services, **88** Swansea University, **89** The Newcastle upon Tyne Hospitals NHS Foundation Trust, **90** The Queen Elizabeth Hospital King's Lynn NHS Foundation Trust, **91** The Royal Marsden NHS Foundation Trust, **92** The Royal Wolverhampton NHS Trust, **93** Turnkey Laboratory, University of Birmingham, **94** University College London Division of Infection and Immunity, **95** University College London Hospital Advanced Pathogen Diagnostics Unit, **96** University College London Hospitals NHS Foundation Trust, **97** University Hospital Southampton NHS Foundation Trust, **98** University Hospitals Dorset NHS Foundation Trust, **99** University Hospitals Sussex NHS Foundation Trust, **100** University of Birmingham, **101** University of Brighton, **102** University of Cambridge, **103** University of East Anglia, **104** University of Edinburgh, **105** University of Exeter, **106** University of Kent, **107** University of Liverpool, **108** University of Oxford, **109** University of Sheffield, **110** University of Southampton, **111** University of St Andrews, **112** Viapath, Guy's and St Thomas' NHS Foundation Trust, and King's College Hospital NHS Foundation Trust, **113** Virology, School of Life Sciences, Queens Medical Centre, University of Nottingham, **114** Watford General Hospital, **115** Wellcome Centre for Human Genetics, Nuffield Department of Medicine, University of Oxford, **116** Wellcome Sanger Institute, **117** West of Scotland Specialist Virology Centre, NHS Greater Glasgow and Clyde, **118** Whittington Health NHS Trust

Acknowledgements

COG-UK is supported by funding from the Medical Research Council (MRC) part of UK Research & Innovation (UKRI), the National Institute of Health Research (NIHR) [grant code: MC_PC_19027], and Genome Research Limited, operating as the Wellcome Sanger Institute.

Declaration of Interest

None.

Data Availability Statement

The data that support the findings of this study are available at Wellcome Sanger Institute COVID-19 Genomic Surveillance (<https://covid19.sanger.ac.uk/lineages/raw>).

Table 1. Estimated rate of spatial growth (\bar{t}_{LE}) of sample SARS-CoV-2 lineages in England, September 2020–December 2021.

Variant / lineage	LTAs (<i>n</i>)	Number of detections ¹	Earliest detection ² (<i>t</i> = 1)	\bar{t}_{LE} (95% CI) (weeks)
Alpha (B.1.1.7 and Q)	307	153,405	39/2020 (26 Sept.)	9.90 (9.56, 10.23)
Delta (B.1.617.2 and AY)	307	722,133	12/2021 (27 March)	7.40 (7.12, 7.68)
B.1.617.2	307	17,504	13/2021 (3 April)	9.11 (8.48, 9.74)
AY.3	168	620	27/2021 (10 July)	14.12 (13.26, 14.98)
AY.4	307	547,403	12/2021 (27 March)	9.45 (9.24, 9.66)
AY.4.1	133	416	25/2021 (26 June)	9.50 (8.61, 10.40)
AY.4.2	307	77,391	25/2021 (26 June)	6.21 (5.86, 6.57)
AY.4.2.1	307	11,541	29/2021 (24 July)	9.43 (8.91, 9.94)
AY.4.3	188	781	19/2021 (15 May)	19.93 (18.92, 20.93)
AY.4.5	158	742	24/2021 (19 June)	15.06 (13.76, 16.37)
AY.5	307	26,111	15/2021 (17 April)	9.83 (9.38, 10.28)
AY.6	306	17,405	17/2021 (1 May)	8.88 (8.48, 9.27)
AY.7	276	3,627	18/2021 (8 May)	9.02 (8.39, 9.65)
AY.8	141	1,241	16/2021 (24 April)	8.60 (7.90, 9.29)
AY.9	304	10,136	14/2021 (10 April)	10.88 (10.33, 11.42)
AY.9.2	251	1,990	28/2021 (17 July)	10.44 (9.70, 11.17)
AY.10	118	683	15/2021 (17 April)	8.50 (7.96, 9.04)
AY.25	130	486	31/2021 (7 Aug.)	13.02 (12.26, 13.78)
AY.33	105	319	25/2021 (26 June)	17.84 (16.63, 19.05)
AY.34	268	3,088	30/2021 (31 July)	10.88 (10.19, 11.57)
AY.36	256	1,999	28/2021 (17 July)	12.69 (12.05, 13.32)
AY.42	115	338	27/2021 (10 July)	10.08 (8.81, 11.34)
AY.43	307	23,068	27/2021 (10 July)	5.56 (5.27, 5.86)
AY.46	305	9,461	21/2021 (29 May)	11.23 (10.72, 11.74)
AY.46.5	304	8,649	23/2021 (12 June)	10.13 (9.66, 10.61)
AY.87	172	688	20/2021 (22 May)	10.28 (9.28, 11.29)
AY.89	173	544	21/2021 (29 May)	13.97 (13.17, 14.77)
AY.90	218	1,202	21/2021 (29 May)	13.52 (12.54, 14.50)
AY.98	307	22,465	22/2021 (5 June)	6.34 (5.99, 6.70)
AY.98.1	172	621	25/2021 (26 June)	15.77 (14.80, 16.75)
AY.109	116	441	25/2021 (26 June)	17.59 (16.67, 18.52)
AY.111	296	4,649	21/2021 (29 May)	15.25 (14.46, 16.04)
AY.120	306	18,400	20/2021 (22 May)	6.56 (6.16, 6.97)
AY.122	302	5,018	21/2021 (29 May)	13.80 (13.07, 14.53)
AY.124	119	424	25/2021 (26 June)	12.99 (11.93, 14.05)
AY.125	162	534	26/2021 (3 July)	16.65 (15.79, 17.51)
Omicron (B.1.1.529 and BA)	304	23,137	47/2021 (27 Nov.) ³	2.63 (2.56, 2.71) ⁴
Average	233	46,450		11.27 (10.03, 12.50)

¹ Excludes 1,105 detections for which lineage data is suppressed and 19,550 detections for which lineage data is not available. ² Epidemiological week/year, with the last day of the week given in parentheses. ³ Excludes a lone detection in week 43 (30 October). ⁴ Indexed to week 47; \bar{t}_{LE} = 6.62 (6.53, 6.70) when indexed to week 43.

Table 2. Worldwide detection of sample Delta AY lineages with relatively high estimated rates of spatial growth (status: 9 January 2022).

Variant	Countries	Global prevalence (%)	Number of detections	Predominant countries (proportion of global detections)
AY.4.2	52	1	82,038	UK (90%), Denmark (4%), Germany (1%), Poland (1%), France (1%)
AY.43	128	4	267,426	Germany (15%), UK (13%), Denmark (13%), France (12%), Belgium (5%)
AY.98	66	1	41,507	UK (91%), USA (2%), Germany (1%), Denmark (1%), Ireland (1%)
AY.120	74	1	30,320	UK (85%), India (3%), USA (3%), Germany (2%), France (1%)

Sources: data from cov-lineages.org [27] and Latif, *et al.* [28–31].

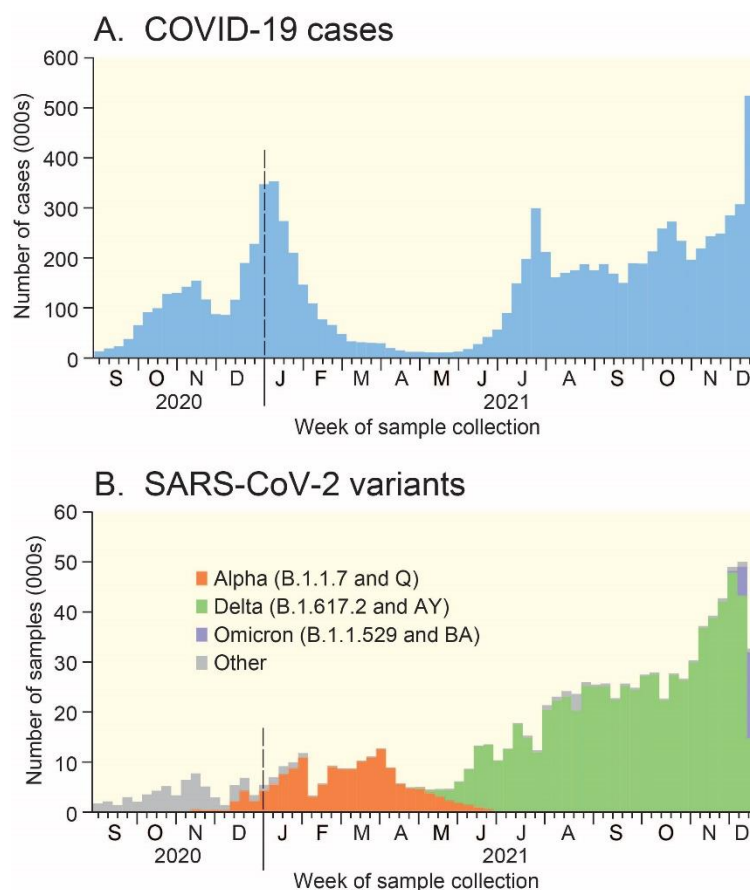


Figure 1. COVID-19 cases in England, September 2020–December 2021. (A) Positive COVID-19 test specimens as recorded by the UK Government. (B) Number of sample genomes of SARS-CoV-2 in the COG-UK database by variant to 18 December 2021. All data are plotted by week of sample collection. Sources: data from GOV.UK Coronavirus (COVID-19) in the UK [17] and COVID-19 Genomics UK (COG-UK) Consortium [18].

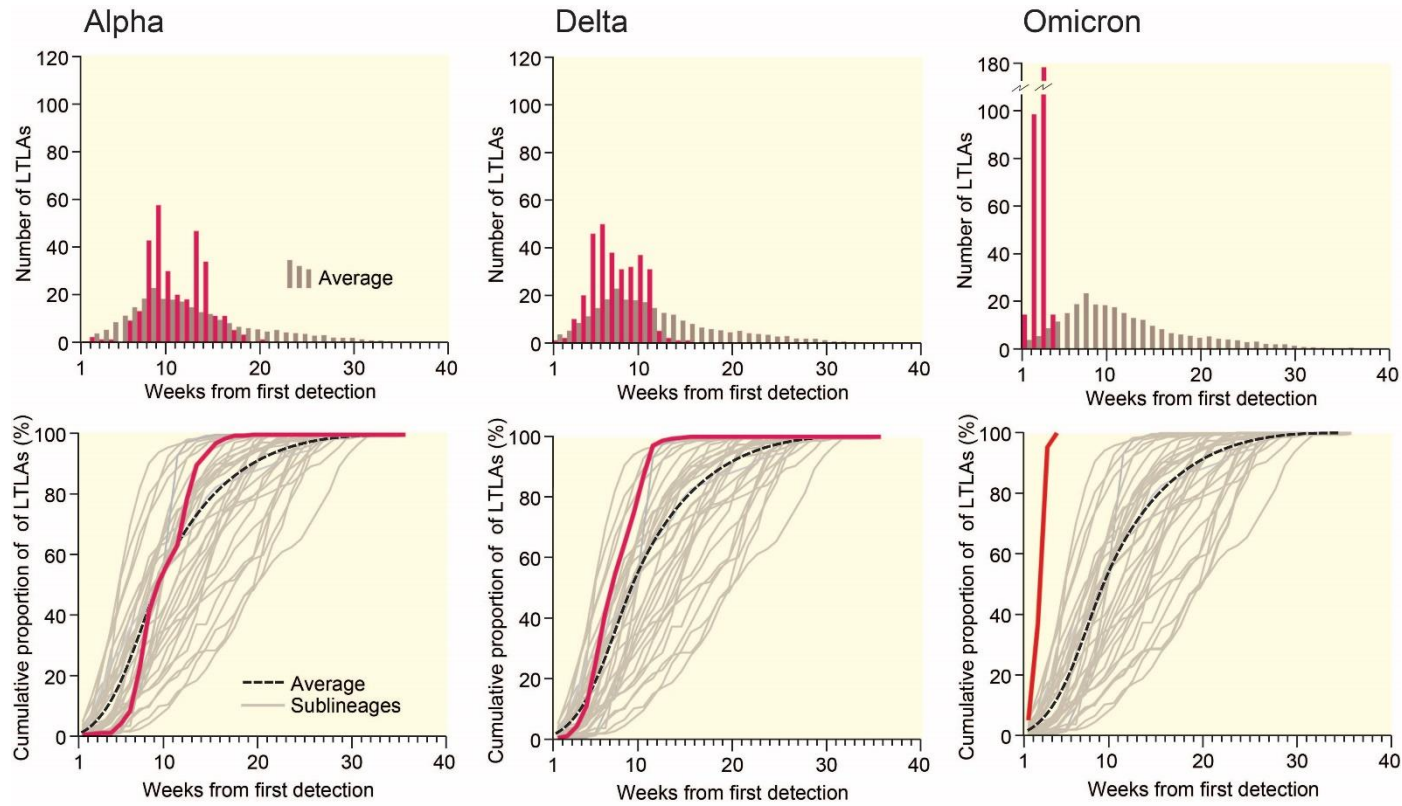


Figure 2. Spatial leading edges (*LE*) of the Alpha (B.1.1.7 and Q), Delta (B.1.617.2 and AY) and Omicron (B.1.1529 and BA) variants in England, September 2020–December 2021. The graphs plot, on a weekly basis, the non-cumulative count (upper) and cumulative proportion (lower) of LTLAs in which each of the three variants was first detected. The horizontal (time) axes are indexed to the epidemiological week of first detection ($t = 1$) of the corresponding variant. Average curves, formed across the set of sample lineages in Table 1, are plotted for reference.

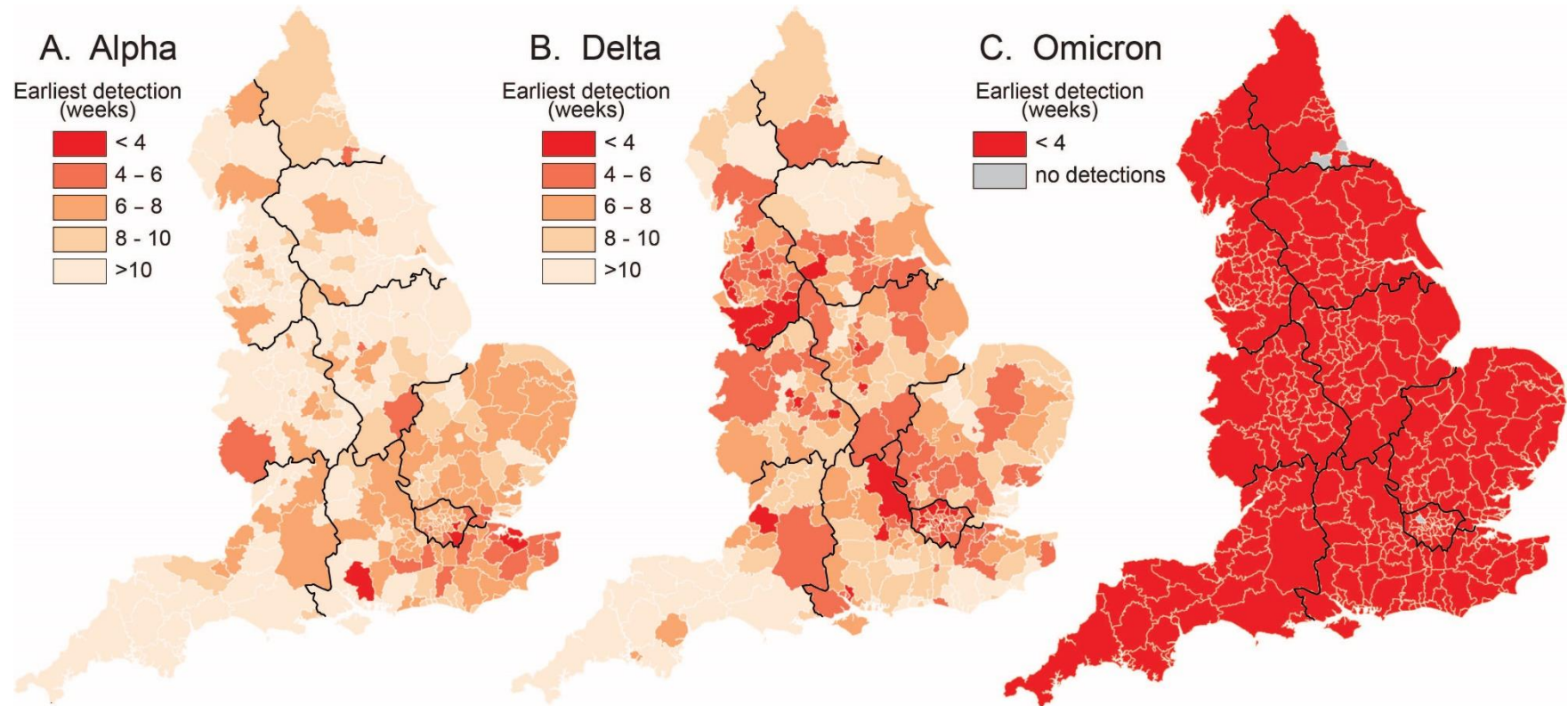


Figure 3. Spatial leading edges (*LE*) of the Alpha (B.1.1.7 and Q), Delta (B.1.617.2 and AY) and Omicron (B.1.1529 and BA) variants in the LTLAs of England, September 2020–December 2021. Maps are indexed to the epidemiological week of first detection (= week 1) of the corresponding variant and plot the number of weeks to first detection in each LTLA.

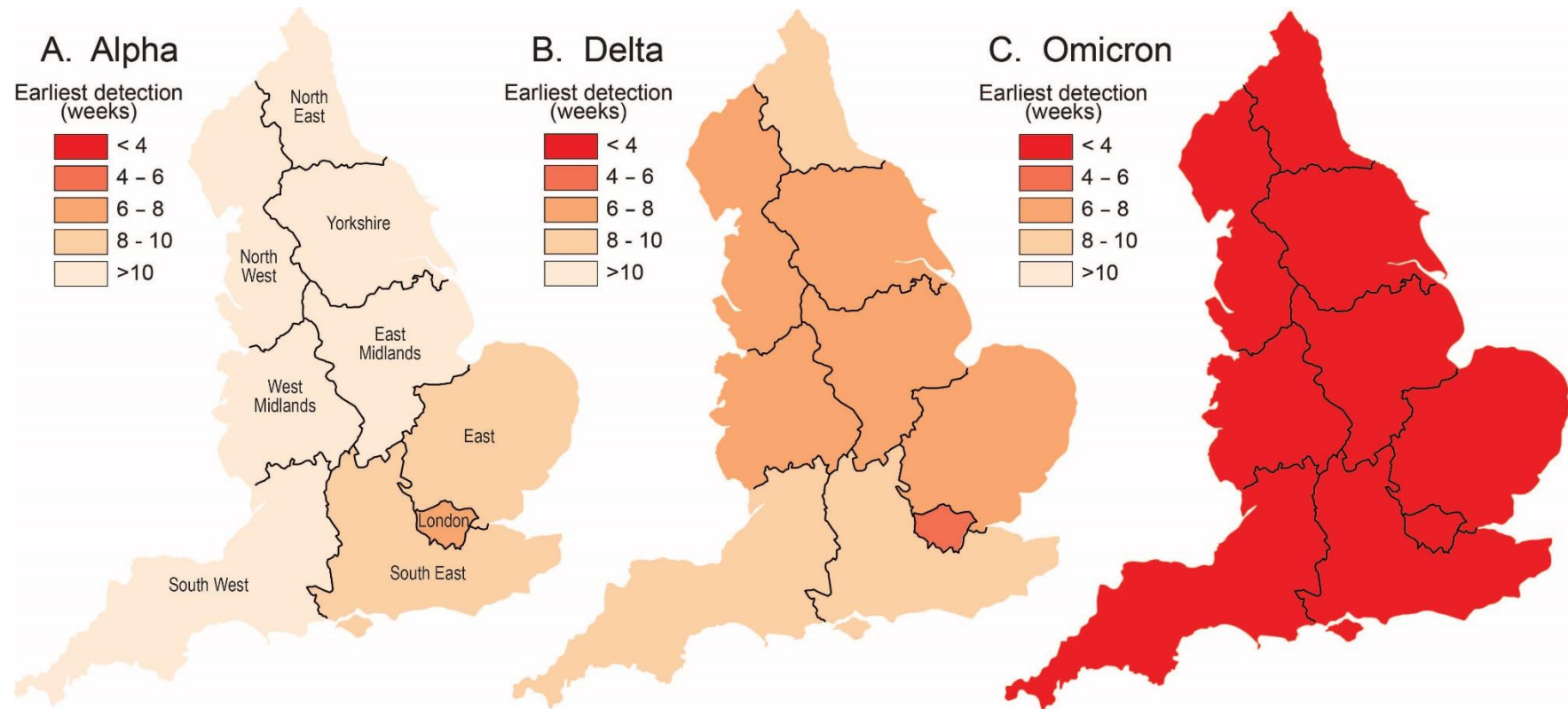


Figure 4. Spatial leading edges (*LE*) of the Alpha (B.1.1.7 and Q), Delta (B.1.617.2 and AY) and Omicron (B.1.1529 and BA) variants in the nine standard regions of England, September 2020–December 2021. Maps plot the average time (in weeks) to first detection of a given variant in each regional subset of LTLAs.

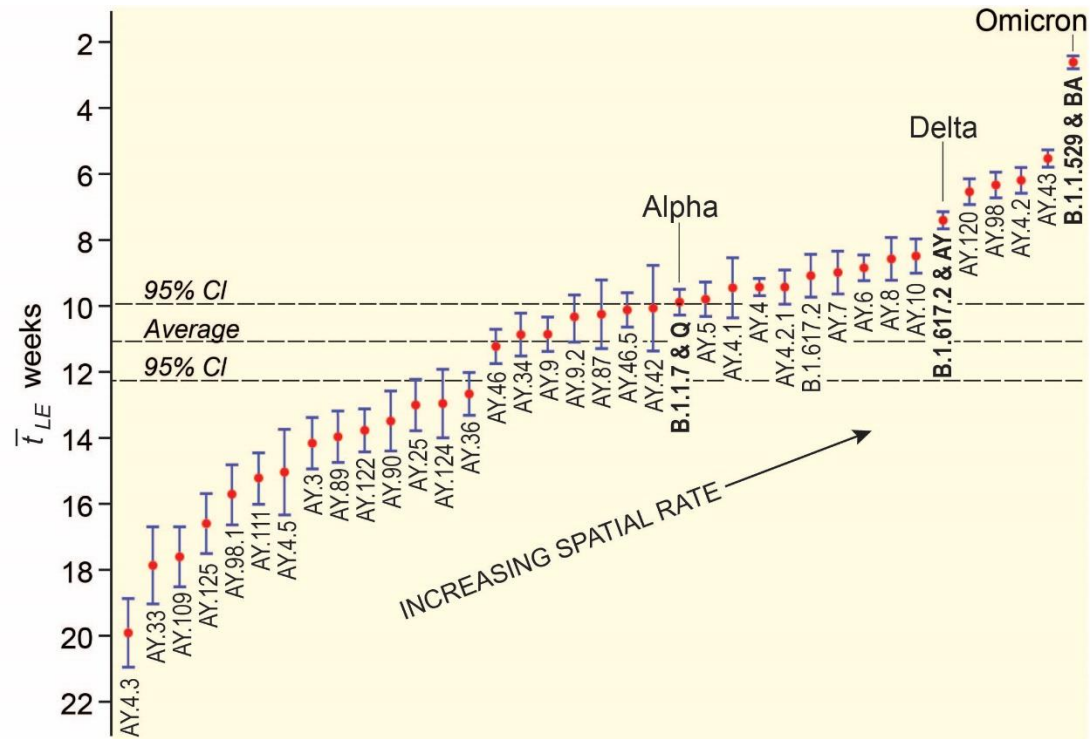


Figure 5. Estimated rate of spatial growth of sample SARS-CoV-2 lineages in England, September 2020–December 2021. The graph plots values of \bar{t}_{LE} and associated 95% CI from Table 1. Values are ordered from the lowest (left, high values of \bar{t}_{LE}) to the highest (right, low values of \bar{t}_{LE}) rates of spatial growth. Values are plotted on an inverted vertical scale to facilitate interpretation. The average value of \bar{t}_{LE} for the sample is shown for reference.

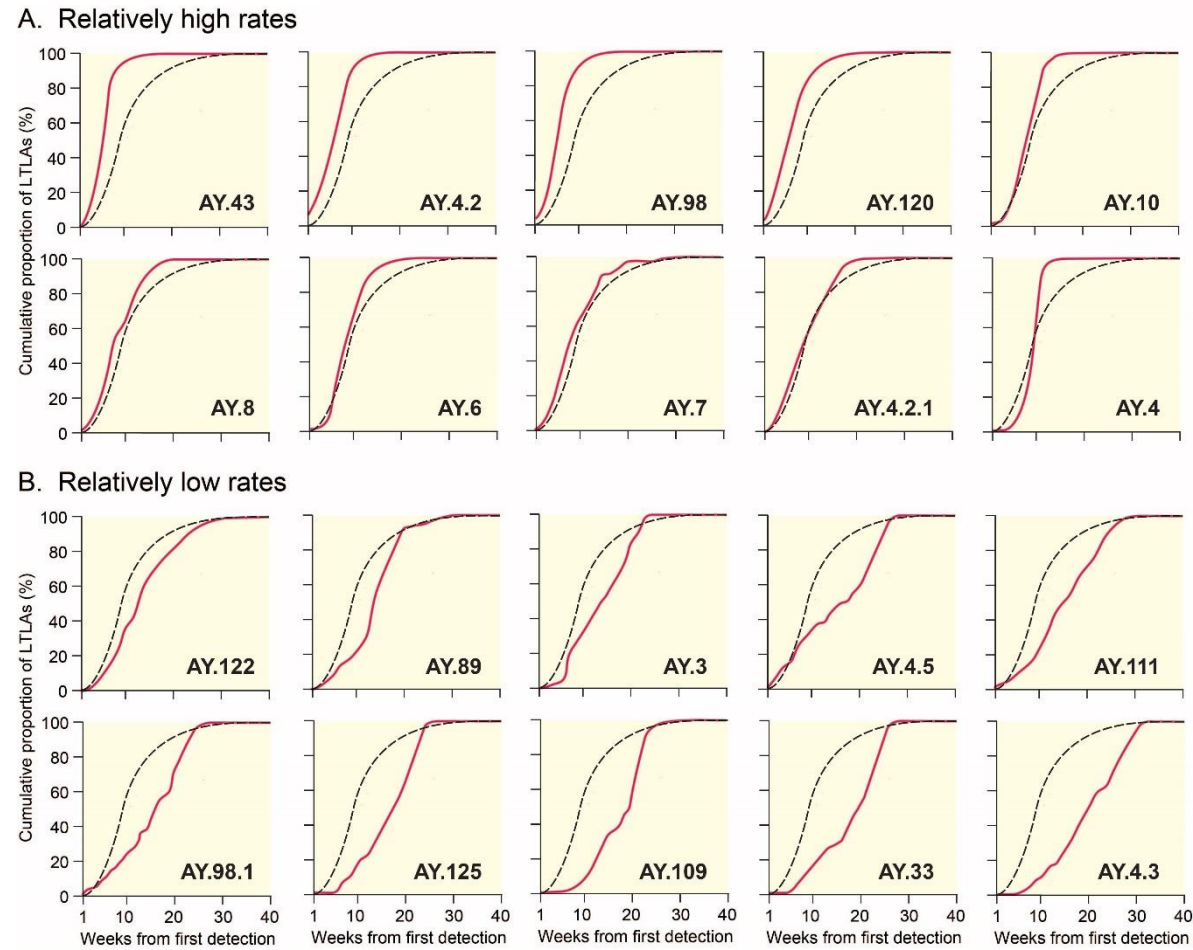


Figure 6. Spatial growth curves for sample Delta sublineages in England, March–December 2021. Curves have been formed in the manner of the lower graphs in Figure 2, with the average curve plotted for reference. Lineages are ordered according to the values of \bar{t}_{LE} in Table 1 and are defined as having relatively high (i.e. low values of \bar{t}_{LE} ; upper graphs, A) and relatively low (i.e. high values of \bar{t}_{LE} ; lower graphs, B) rates of spatial growth.