

1 **Integrated genomic and histopathological analysis of low grade serous ovarian carcinoma**
2 **identifies clinically distinct disease subtypes**

3 John P Thomson^{1a}, Robert L Hollis^{1a}, Juliette van Baal^{2a}, Narthana Ilenkovan¹, Michael
4 Churchman¹, Koen van de Vijver², Frederike Dijk³, Alison M Meynert⁴, Clare Bartos¹, Tzyvia
5 Rye¹, Ian Croy¹, Patricia Diana¹, Mignon van Gent³, Helen Creedon⁵, Rachel Nirsimloo⁵, Fiona
6 Nussey⁵, Christianne Lok^{2b}, C. Simon Herrington^{1,b} and Charlie Gourley^{1,b}

7 ¹Nicola Murray Centre for Ovarian Cancer Research, Cancer Research UK Edinburgh Centre,
8 MRC Institute of Genetics and Cancer, University of Edinburgh, Edinburgh, UK

9 ²Department of Gynaecologic Oncology and Department of Pathology, The Netherlands Cancer
10 Institute, Antoni van Leeuwenhoek, Amsterdam, The Netherlands

11 ³Department of Gynaecologic Oncology and Department of Pathology, Amsterdam University
12 Medical Centres, Amsterdam, The Netherlands

13 ⁴MRC Human Genetics Unit, MRC Institute of Genetics and Cancer, University of Edinburgh,
14 Edinburgh, UK

15 ⁵Edinburgh Cancer Centre, Western General Hospital, Edinburgh, UK.

16 ^{a,b}Authors contributed equally

17

18 **Corresponding Author(s):** Professor Charlie Gourley - Nicola Murray Centre for Ovarian
19 Cancer Research, Cancer Research UK Edinburgh Centre, MRC IGC, University of Edinburgh.
20 Crewe Road South, Edinburgh, EH4 2XU, UK. email: charlie.gourley@ed.ac.uk.

21

22

23

24

25 **Abstract**

26 **Background.**

27 Low-grade serous ovarian carcinoma (LGSOC) is a distinct, under-investigated and relatively
28 chemotherapy-resistant ovarian cancer type. Understanding the molecular landscape is crucial
29 to maximise the impact of molecularly-targeted therapy.

30 **Methods**

31 Whole exome sequencing and copy number data were integrated with histopathological patterns,
32 ER/PR expression, and detailed clinical annotation, including survival, in a carefully curated
33 LGSOC cohort.

34 **Results**

35 63 tumours were analysed in the largest comprehensive genomic LGSOC study to date. Three
36 genomic subgroups were identified: canonical MAPK mutant (cMAPKm: 52%,
37 *KRAS/BRAF/NRAS*), MAPK-associated mutation (27%, 14 MAPK-associated genes) and MAPK
38 wild-type (MAPKwt: 21%). MAPKwt patients were younger at diagnosis (median 47 versus 62
39 years in the cMAPKm subgroup) and demonstrated shorter survival [multivariable HR (mHR)
40 4.17]. The inferior survival in the MAPKwt subgroup was due to shorter post-relapse survival
41 (mHR 5.22) rather than shorter time to first progression (mHR 1.15). Patients in the MAPK-
42 associated mutation subgroup had similar survival to cMAPKm cases. The cMAPKm subgroup
43 more frequently demonstrated macropapillary invasion. Desmoplasia and micropapillary invasion
44 were independently associated with poor survival. NOTCH pathway activation occurred
45 independently of MAPK subgroup.

46 **Conclusions**

47 LGSOC comprises multiple genomic subgroups with distinct clinical, molecular and
48 histopathological features. True MAPKwt cases represent around a fifth of patients: they are
49 younger but have poorer survival. New therapeutic strategies with activity in this subgroup are
50 urgently required. NOTCH inhibitors represent a therapeutic strategy worthy of exploration.

51

52

53 Introduction

54 Low grade serous ovarian carcinoma (LGSOC) is an uncommon (<5%) and under-investigated
55 ovarian cancer type, in some cases arising from serous borderline tumours [1]. In contrast to high
56 grade serous ovarian cancers (HGSOCs), LGSOCs are *TP53* wild-type, do not demonstrate
57 genomic instability or homologous recombination repair deficiency and frequently harbour
58 classical activating mutations in canonical MAPK pathway components (*KRAS*, *BRAF* and
59 *NRAS*) [2-5]. LGSOCs typically display high oestrogen receptor (ER) expression, with expression
60 of progesterone receptor (PR) in a subset of cases [6].

61 LGSOC often affects younger women (median 47 years) [7]. The response rate to platinum-
62 based chemotherapy is 5-25% [8, 9], compared to 70-80% in HGSOCs. Relapsed LGSOC
63 follows a more indolent course than relapsed HGSOC, demonstrating prolonged post-relapse
64 survival [10, 11]. Appreciation of LGSOC as a separate entity has driven a management shift
65 away from the conventional 'one size fits all' approach to ovarian cancer treatment, with
66 endocrine therapy showing significant activity [12, 13]. Recently, the MEK inhibitor trametinib
67 also demonstrated notable efficacy, delaying disease progression in the context of LGSOC
68 recurrence compared to standard of care therapies [14, 15]. Another MEK inhibitor binimetinib,
69 while not demonstrating superiority to standard of care chemotherapy, did show an overall
70 response rate of 16% with a suggestion that patients whose tumours harboured activating *KRAS*
71 mutations were more likely to respond [16].

72 Until recently, genomic characterisation of LGSOC had been limited to targeted sequencing of
73 selected genes [3, 4, 17-19] or whole exome sequencing of a small number of cases (n=8, n=9,
74 n=22) [5, 17, 20]. Most recently, a targeted sequencing study of 71 LGSOC cases [19] identified
75 mutation of *KRAS*, *BRAF* or *NRAS* in 47% of cases, alongside further less common potentially
76 actionable mutations.

77 Here we investigate whether comprehensive genomic characterisation of LGSOC can be
78 implemented to stratify LGSOC cases into clinically meaningful subgroups. We perform whole
79 exome sequencing (WES) on tumour material from 63 LGSOC patients, identifying genomic
80 subgroups centred around the MAPK pathway. These subgroups demonstrate significant
81 differences in patient age, clinical outcome and histopathological features; we identify patient
82 groups more likely to experience long-term survival, and highlight high-risk patient groups for
83 which new treatment strategies are required to improve outcome.

84

85 **Methods**

86 **Ethical approval**

87 Ethical approval was obtained from the Lothian Human Annotated Bioresource (reference
88 15/ES/0094-SR925), NKI-AVL Translational Research Board (reference CFMPB284), and
89 University of Amsterdam AMC Biobank Assessment Committee (reference 2016_070#A201641).
90 All participants provided written informed consent or had consent waived by the ethics committee
91 due to the retrospective nature of the study.

92 **Cohort identification and pathology review**

93 Cases were identified from local databases. All cases underwent expert gynaecological
94 pathology review (KvdV, CSH). Cases were excluded if: WT1 negative; aberrant p53
95 expression; no definitive stromal invasion; *TP53* gene mutation.

96 **Assessment of histopathological patterns in LGSOC**

97 H&E-stained sections underwent secondary review to identify the presence of desmoplasia and
98 the macropapillary (MaP) and micropapillary (MiP) patterns of invasion[22]. MaP was defined as
99 stromal invasion by papillary structures containing fibrovascular cores[22]; MiP was defined as
100 invasion by papillary structures without fibrovascular cores.

101 **Clinical data**

102 Baseline patient characteristics, treatment information and outcome data were retrieved from
103 local databases and from patient file review. Disease-specific survival (DSS) was calculated from
104 the date of confirmed ovarian cancer (OC) diagnosis.

105 **Whole exome sequencing, variant calling and analysis**

106 Following DNA extraction from macrodissected FFPE sections (Supplementary Methods 1),
107 exome capture was performed using the Illumina TruSeq Exome Library Prep kit and WES was
108 performed on the Illumina NextSeq 550 (Illumina, Inc., San Diego, CA, USA). Samples failed
109 sequencing QC if mean on-target coverage was <30X. Data were aligned to the GRCh38 human
110 reference genome using bwa-0.7.17[29], duplicates marked and base quality scores recalibrated
111 with the GenomeAnalysisToolkit (GATK) v4[30] within the bcbio 1.0.6 pipeline (Supplementary
112 Methods 2). Variants were called using a majority vote system from three callers (VarDict[31],
113 Mutect2[32] and Freebayes[33]) and were filtered to remove common and likely non-functional
114 variation. Analysis of variants and oncogenic pathways was performed using the R package
115 maftools[34]. Functional tumour mutational burden (fTMB) was calculated as the number of
116 mutations present following filtering. CNV analysis was carried out using a custom script utilising
117 the Python package multiBamSummary, comparing read normalised 10kb binned scores
118 between in house “normal” buffy coat derived sample datasets and LGSOC samples. For more
119 information on these analyses see Supplementary Methods 3-6.

120 **Immunohistochemistry for ER and PR**

121 Immunohistochemistry for ER and PR was performed using protocol F on the Leica BOND III
122 Autostainer (Supplementary Methods 7). ER immunohistochemistry used rabbit anti-ER antibody
123 M3643 clone EP1; PR immunohistochemistry used mouse anti-PR antibody M3569 clone PgR-
124 636. Nuclear expression was quantified using histoscore, generated by multiplying the proportion
125 of positive tumour nuclei (0 – 100%) by the intensity of nuclear staining (0 – 3) to produce
126 weighted scores from 0 to 300[35]. Two independent observers scored digital images of stained
127 slides, demonstrating excellent agreement ($\rho=0.96$ for PR, $\rho=0.93$ for ER) (Supplementary
128 Methods 7). Final patient histoscore was calculated as the mean score of the two observers.

129 **Statistical analysis**

130 Statistical analyses were performed using R version 4.0.3. The Mann Whitney-U test or T-test
131 were used to compare continuous data, as appropriate. Survival analyses were performed using
132 the Cox proportional hazards regression analysis in the Survival package. Univariable survival
133 analyses are presented as hazard ratios (HRs) alongside 95% confidence intervals. Multivariable
134 analyses are presented similarly, detailing multivariable hazard ratios (mHRs). Median follow-up
135 time was calculated using the reverse Kaplan-Meier method. Comparisons of frequency were
136 performed using the Chi-squared test or Fisher's exact test, as appropriate.

137 **Data availability**

138 The genomic data presented in this manuscript are being made available via deposition in the
139 European Genome-Phenome Archive.

140

141

142

143 **Results**

144 **Cohort characteristics**

145 118 LGSOC cases were identified. 41 cases were excluded for insufficient tumour material or
146 cellularity; 3 failed DNA quality control; 5 had insufficient sequencing coverage. 69 cases
147 underwent genomic characterisation by WES. 6 cases harbouring *TP53* mutations were
148 excluded as potential occult HGSOE, leaving 63 cases in the final LGSOC study cohort (Figure
149 S1). The median per-sample on-target coverage in the study cohort was 64X (range 32X-132X).

150 Clinical characteristics of the LGSOC study cohort are summarized in Table 1. The median
151 follow-up time was 13.3 years. All patients underwent cytoreductive surgery. The median
152 disease-specific survival (DSS) was 12.9 years.

153 **Genomic features identify subgroups of low grade serous ovarian carcinoma**

154 WES identified canonical MAPK pathway mutations in 33 cases (52.4%) (cMAPKm subgroup):
155 24 *KRAS* (38.1%), 6 *BRAF* (9.5%) and 3 *NRAS* (4.8%) (Figures 1, S2, S3), which occurred
156 mutually exclusively. The majority of these events occurred at known mutational hotspots (83%
157 of *KRAS* G12R/C/D/V, 100% *BRAF* V600E, 100% *NRAS* Q61R/K) (Figure S4).

158 Pathway analysis of mutated genes revealed a further 17 cases (27.0%) with perturbation of the
159 MAPK/RAS pathway by mutations across 14 other MAPK-associated genes defined by the
160 TCGA PanCanAtlas [21] (MAPK-associated mutations) (Figures 1 S5). These events were
161 largely mutually exclusive (co-occurrence in 1 case), and genomic events in these genes seldom
162 occurred in cMAPKm cases (co-occurrence in 2 cases). The total frequency of MAPK/RAS
163 pathway alteration was 50 of 63 cases (79.4%) (33 cMAPKm, 17 MAPK-associated mutations).

164 A further 13 cases were MAPK wild-type (MAPKwt). These patients demonstrated significantly
165 younger age at diagnosis compared to cMAPKm cases (median 47 vs 62 years, $P=0.048$)
166 (Figures 1, 2A & Table S1).

167 NOTCH pathway perturbation was also common (21.0% of cases), occurring both in the context
168 of MAPK/RAS pathway alteration (34.0%, 17/50) and in MAPKwt cases (30.8%, 4/13) (Figure
169 S5). Recurrent gene targets of mutation beyond MAPK pathway components included *ATM* (5
170 cases, 7.9%), *USP9X* (5 cases, 7.9%) and *EIF1AX* (3 cases, 4.8%) (Figures 1, S3). There was
171 significant co-occurrence between *NRAS* and *EIF1AX* mutation ($P=0.005$).

172

173

174 **Copy number alterations in low grade serous carcinoma**

175 Across the cohort, loss of all or part of chromosome 19 (chr19) was common (22 cases (34.9%):
176 p and q arms; 6 cases (9.5%): p arm; 2 cases (3.2%): q arm). Chr19p loss was most frequent in
177 MAPKwt cases (9 of 13 cases, 69.2%), but this was not statistically significantly higher than in
178 the cMAPKm group ($P=0.056$) (Figure S6).

179 Gain of the q arm of chr1 occurred in 19 cases (30.2%), while loss of the p arm of chr1 occurred
180 in 13 cases (20.6%). Gain of the q arm of chr8 was also common (16 cases, 25.4%). In
181 agreement with previous reports, four cases (6.3%) demonstrated copy number loss specifically
182 over the *USP9X* locus.

183

184 **Histopathological patterns in low grade serous carcinoma**

185 A MiP pattern of invasion was identified in 38 cases (60.3%), while a MaP invasion pattern was
186 identified in 23 cases (36.5%) (Figure 1)[22]. The MiP and MaP patterns were largely mutually
187 exclusive ($P<0.0001$, co-occurrence in only 3 cases). 5 cases demonstrated neither MaP nor MiP
188 pattern. The MaP pattern was more common in cMAPKm cases (54.5%) compared to MAPKwt
189 (23.1%; $p=0.004$; Figure 2B).

190 Desmoplasia was identified in 40 cases (63.5%). Desmoplasia was associated with advanced
191 stage at diagnosis (92.5%, 37 of 40 desmoplastic cases with FIGO III/IV vs 50.0%, 11 of 22
192 evaluable non-desmoplastic cases with FIGO III/IV; $P<0.001$). Desmoplasia was also associated
193 with the presence of macroscopic RD (67.5%, 27 of 40 desmoplastic cases demonstrated
194 macroscopic RD vs 33.3%, 14 of 21 evaluable non-desmoplastic cases, $P=0.015$) (Figures 2C,
195 3A, 3B).

196

197 **ER and PR expression in low grade serous carcinoma**

198 LGSOC samples stained uniformly for ER (histoscore ≥ 50 in 60 of 61 evaluable cases, 98.4%; 2
199 non-evaluable) (Figure S7A). Median ER and PR histoscores were 220 (range 7.5-300) and 50
200 (range 0-295) respectively (Figure S7A and S7B). Analysis of ER and PR levels across the
201 genomic classes revealed higher levels of PR expression in the MAPKwt subgroup (median PR
202 histoscore 105) (Figure 2D, Figure S7C), but this was not significantly higher compared to the
203 cMAPKm and MAPK-associated subgroups (median PR histoscore 45 and 35, $P=0.083$).

204 Desmoplastic tumours demonstrated significantly lower PR expression (median histoscore 30 vs
205 110, Bonferroni-adjusted $P=0.003$) (Figure 3C) than non-desmoplastic tumours.

206

207 **Features associated with outcome in low grade serous carcinoma**

208 Patients with LGSOC demonstrating desmoplasia experienced significantly shorter DSS (HR for
209 no desmoplasia 0.18, 95% CI 0.05-0.62) (Figures 4A, S8A); the MiP pattern was also associated
210 with poor DSS (HR for absence of MiP 0.29, 95% CI 0.10-0.86) (Figures 4B, S8B). Conversely,
211 high PR expression was associated with significantly prolonged survival (HR for PR histoscore
212 ≥ 50 0.23, 95% CI 0.09-0.60) (Figures 4C, S8C).

213 Multivariable analysis of LGSOC features (genomic subgroup, PR status, MiP pattern and
214 desmoplasia) accounting for clinicopathological variables identified the MAPKwt subgroup
215 (multivariable HR [mHR] for cMAPKm vs MAPKwt 0.24, 95% CI 0.07-0.79), desmoplastic cases
216 (mHR for absence of desmoplasia 0.20, 95% CI 0.04-0.89) and the MiP pattern (mHR for
217 absence of MiP=0.27, 95% CI 0.08-0.91) as independently associated with shorter DSS (Figure
218 4D, Table S2). PR status was not independently associated with significantly longer DSS (mHR
219 0.38, 95% CI 0.12-1.14).

220 Further endpoint analysis suggested that inferior DSS in the MAPKwt group was due to shorter
221 post-relapse survival (mHR 5.22, 95% CI 1.20-22.67) rather than rapid disease progression
222 following first-line treatment (mHR 1.15, 95% CI 0.43-3.08).

223 **Discussion**

224 LGSOC affects younger women than HGSOC and demonstrates greater intrinsic
225 chemoresistance. Although survival is better than HGSOC, patients frequently relapse resulting
226 in morbidity from largely ineffectual therapies and premature mortality. As such, better
227 (molecular) characterization and new therapies are urgently required.

228 Few studies have performed molecular characterisation of robustly curated LGSOC cohorts.
229 Where molecular profiling studies have been performed, these have been limited to panel based
230 sequencing of selected genes [3, 18, 19], or have included only a small number of patient
231 samples [5, 20]. Few of these studies have used immunohistochemistry for WT1/p53 to confirm
232 LGSOC diagnosis. Here we report comprehensive genomic profiling by WES, integrating these
233 data with histopathological analysis, clinical data and assessment of ER and PR expression
234 patterns in a sizeable LGSOC cohort.

235 52% of cases harboured mutations in the canonical MAPK pathway components *KRAS*, *BRAF*
236 and *NRAS*. This cMAPKm group more frequently demonstrated the MaP pattern of invasion,
237 represented older patients (median 62 years) and was associated with more favourable DSS and
238 post-relapse survival. These data are consistent with previously reported favourable survival in
239 LGSOC patients with tumours harbouring *KRAS* or *BRAF* mutations identified by targeted
240 sequencing [3]. Our data suggest that this survival benefit is due to prolonged post-relapse
241 survival.

242 While the rate of cMAPK_m within our LGSOC cohort (52%) is similar to that reported in previous
243 targeted sequencing studies [17, 19] and WES of small LGSOC cohorts [20], we also identified a
244 further 27% of cases (MAPK-associated group) demonstrating mutational disruption of genes
245 related to the MAPK pathway [21]; these cases demonstrated a survival profile similar to that of
246 the cMAPK_m cases. The remaining MAPK_wt cases (21%) represented patients with younger age
247 at diagnosis (median 47 years) and who experienced shorter survival. This suggests that
248 previous observations of poorer survival in younger LGSOC patients may be underpinned by
249 differences in disease biology between younger and older patients [23]. MAPK_wt cases often
250 demonstrated the MiP pattern of invasion (62%), with only 23% demonstrating the MaP pattern.

251 While different histopathological patterns of invasion (MaP and MiP) were associated with the
252 genomic subgroups, we demonstrate that the MiP pattern is independently associated with
253 shorter survival time (mHR 3.76). We also demonstrate that the presence of desmoplasia is
254 associated with poorer outcome (mHR 5.10), independent of its relationship with more advanced
255 stage disease and residual disease status.

256 Both the GOG281/LOGS and MILO studies suggested that the response rates to MEK inhibition
257 were greater in patients with canonical MAPK defects [14, 16]. However, to date, no assessment
258 of relative MEK inhibitor efficacy has been made with regard to MAPK pathway mutations
259 beyond *KRAS/BRAF/NRAS*; future work should seek to quantify efficacy within these patients,
260 and should determine whether patients with no identifiable genomic MAPK defect (MAPK_wt)
261 derive any benefit from MEK inhibition.

262 Beyond the MAPK pathway, analysis of genomic events from our WES data suggest perturbation
263 of the NOTCH signalling pathway is common, affecting a notable proportion of cases both with
264 and without MAPK defects (34% and 31%, respectively). NOTCH pathway inhibition may
265 therefore represent a novel therapeutic strategy for LGSOC patients with intrinsic or acquired
266 resistance to chemotherapy and/or MEK inhibitors.

267 We report the first investigation using WES in a sizeable LGSOC cohort (n=63) with detailed
268 clinical annotation and extensive follow-up. The use of immunohistochemistry for WT1 and p53
269 status to robustly curate our cohort, represents a major strength of this work. However, while our
270 dataset represents one of the largest LGSOC collections reported to date, the overall cohort size
271 remains modest due to the rarity of LGSOC. Confirmatory studies characterising the behaviour of
272 the described genomic subgroups, and associations with age, histopathological features and
273 outcome, are therefore required.

274 Collectively, our data identify a subgroup of LGSOC with mutations in MAPK pathway
275 components beyond *KRAS*, *BRAF* and *NRAS*. Alongside the cMAPK_m subgroup, these cases
276 demonstrate more favourable outcome when compared to MAPK_wt patients, who are younger at

277 diagnosis. The MaP pattern of invasion is a potential histopathological indicator of cMAPKm
278 LGSOC. Desmoplasia and the MiP pattern are features independently associated with survival.

279

280 **Acknowledgements**

281 Funding: RLH was supported by Target Ovarian Cancer. This work was funded in part by a
282 HANARTH Foundation grant. We extend our thanks to The Nicola Murray Foundation for their
283 generous support of The Nicola Murray Centre for Ovarian Cancer Research. JT and CB were
284 supported by core funding from the CRUK Edinburgh Centre. AMM was supported by core
285 funding awarded to the MRC Human Genetics Unit.

286 We are grateful to the NHS Lothian Department of Pathology, Edinburgh Experimental Cancer
287 Medicine Centre, the Edinburgh Ovarian Cancer Database and the NRS Lothian Human
288 Annotated Bioresource for their ongoing support. The high throughput sequencing described
289 here was supported by the Edinburgh Clinical Research Facility, Western General Hospital,
290 Edinburgh, UK. We would like to acknowledge the NKI- AVL Core Facility Molecular Pathology &
291 Biobanking (CFMPB) for supplying NKI-AVL Biobank material and providing laboratory support.

292 **Declaration of interest statement:**

293 RLH: consultancy fees from GlaxoSmithKline. FN: non-personal interests in AstraZeneca and
294 Tesaro. CG: research funding from Roche, AstraZeneca, Novartis, Aprea, Nucana, GSK, Tesaro,
295 BerGen Bio, Medannexin, Verastem; honoraria/consultancy fees Roche, AstraZeneca, MSD,
296 GSK, Tesaro, Nucana, Clovis, Foundation One, Chugai, Sierra Oncology, Cor2Ed and Takeda;
297 named on issued/pending patents related to predicting treatment response in ovarian cancer
298 outside the scope of the work described here. All other authors declare no conflicts of interest.

299

300 References

- 301 [1] Shih Ie M, Kurman RJ. Ovarian tumorigenesis: a proposed model based on morphological
302 and molecular genetic analysis. *Am J Pathol.* 2004;164:1511-8.
- 303 [2] Cheasley D, Nigam A, Zethoven M, Hunter S, Etemadmoghadam D, Semple T, et al.
304 Genomic analysis of low-grade serous ovarian carcinoma to identify key drivers and therapeutic
305 vulnerabilities. *J Pathol.* 2020.
- 306 [3] Gershenson DM, Sun CC, Wong KK. Impact of mutational status on survival in low-grade
307 serous carcinoma of the ovary or peritoneum. *Br J Cancer.* 2015;113:1254-8.
- 308 [4] Hunter SM, Anglesio MS, Ryland GL, Sharma R, Chiew YE, Rowley SM, et al. Molecular
309 profiling of low grade serous ovarian tumours identifies novel candidate driver genes.
310 *Oncotarget.* 2015;6:37663-77.
- 311 [5] Jones S, Wang TL, Kurman RJ, Nakayama K, Velculescu VE, Vogelstein B, et al. Low-grade
312 serous carcinomas of the ovary contain very few point mutations. *J Pathol.* 2012;226:413-20.
- 313 [6] Sieh W, Kobel M, Longacre TA, Bowtell DD, deFazio A, Goodman MT, et al. Hormone-
314 receptor expression and ovarian cancer survival: an Ovarian Tumor Tissue Analysis consortium
315 study. *Lancet Oncol.* 2013;14:853-62.
- 316 [7] Gershenson DM, Bodurka DC, Lu KH, Nathan LC, Milojevic L, Wong KK, et al. Impact of Age
317 and Primary Disease Site on Outcome in Women With Low-Grade Serous Carcinoma of the
318 Ovary or Peritoneum: Results of a Large Single-Institution Registry of a Rare Tumor. *J Clin*
319 *Oncol.* 2015;33:2675-82.
- 320 [8] Grabowski JP, Harter P, Heitz F, Pujade-Lauraine E, Reuss A, Kristensen G, et al. Operability
321 and chemotherapy responsiveness in advanced low-grade serous ovarian cancer. An analysis of
322 the AGO Study Group metadatabase. *Gynecol Oncol.* 2016;140:457-62.
- 323 [9] Schmeler KM, Sun CC, Bodurka DC, Deavers MT, Malpica A, Coleman RL, et al.
324 Neoadjuvant chemotherapy for low-grade serous carcinoma of the ovary or peritoneum. *Gynecol*
325 *Oncol.* 2008;108:510-4.
- 326 [10] Gershenson DM, Sun CC, Lu KH, Coleman RL, Sood AK, Malpica A, et al. Clinical behavior
327 of stage II-IV low-grade serous carcinoma of the ovary. *Obstet Gynecol.* 2006;108:361-8.
- 328 [11] Irodi A, Rye T, Herbert K, Churchman M, Bartos C, Mackean M, et al. Patterns of
329 clinicopathological features and outcome in epithelial ovarian cancer patients: 35 years of
330 prospectively collected data. *Bjog.* 2020;127:1409-20.
- 331 [12] Gershenson DM. Current advances in the management of malignant germ cell and sex cord-
332 stromal tumors of the ovary. *Gynecol Oncol.* 2012;125:515-7.
- 333 [13] Gershenson DM, Bodurka DC, Coleman RL, Lu KH, Malpica A, Sun CC. Hormonal
334 Maintenance Therapy for Women With Low-Grade Serous Cancer of the Ovary or Peritoneum. *J*
335 *Clin Oncol.* 2017;35:1103-11.
- 336 [14] Gershenson DM, Miller A, Brady W, Paul J, Carty K, Rodgers W, et al. LBA61 - A
337 randomized phase II/III study to assess the efficacy of trametinib in patients with recurrent or
338 progressive low-grade serous ovarian or peritoneal cancer. *Annals of Oncology.* 2019;30:v897-
339 v8.
- 340 [15] Gershenson DM, Miller A, Brady WE, Paul J, Carty K, Rodgers W, et al. Trametinib versus
341 standard of care in patients with recurrent low-grade serous ovarian cancer (GOG 281/LOGS): a
342 randomised, open-label phase 2/3 trial. *The Lancet.* In press.
- 343 [16] Monk BJ, Grisham RN, Banerjee S, Kalbacher E, Mirza MR, Romero I, et al. MILO/ENGOT-
344 ov11: Binimetinib Versus Physician's Choice Chemotherapy in Recurrent or Persistent Low-
345 Grade Serous Carcinomas of the Ovary, Fallopian Tube, or Primary Peritoneum. *J Clin Oncol.*
346 2020;38:3753-62.
- 347 [17] Hunter SM, Anglesio MS, Ryland GL, Sharma R, Chiew YE, Rowley SM, et al. Molecular
348 profiling of low grade serous ovarian tumours identifies novel candidate driver genes.
349 *Oncotarget.* 2015;6:37663-77.
- 350 [18] Emmanuel C, Chiew YE, George J, Etemadmoghadam D, Anglesio MS, Sharma R, et al.
351 Genomic classification of serous ovarian cancer with adjacent borderline differentiates RAS
352 pathway and TP53-mutant tumors and identifies NRAS as an oncogenic driver. *Clinical cancer*
353 *research : an official journal of the American Association for Cancer Research.* 2014;20:6618-30.
- 354 [19] Cheasley D, Nigam A, Zethoven M, Hunter S, Etemadmoghadam D, Semple T, et al.
355 Genomic analysis of low-grade serous ovarian carcinoma to identify key drivers and therapeutic
356 vulnerabilities. *The Journal of pathology.* 2021;253:41-54.

- 357 [20] Etemadmoghadam D, Azar WJ, Lei Y, Moujaber T, Garsed DW, Kennedy CJ, et al. EIF1AX
358 and NRAS Mutations Co-occur and Cooperate in Low-Grade Serous Ovarian Carcinomas.
359 *Cancer Res.* 2017;77:4268-78.
- 360 [21] Sanchez-Vega F, Mina M, Armenia J, Chatila WK, Luna A, La KC, et al. Oncogenic
361 Signaling Pathways in The Cancer Genome Atlas. *Cell.* 2018;173:321-37.e10.
- 362 [22] Yemelyanova A, Mao TL, Nakayama N, Shih IM, Kurman RJ. Low-grade serous carcinoma
363 of the ovary displaying a macropapillary pattern of invasion. *Am J Surg Pathol.* 2008;32:1800-6.
- 364 [23] Gershenson DM, Bodurka DC, Lu KH, Nathan LC, Milojevic L, Wong KK, et al. Impact of age
365 and primary disease site on outcome in women with low-grade serous carcinoma of the ovary or
366 peritoneum: Results of a large single-institution registry of a rare tumor. *Journal of Clinical
367 Oncology.* 2015;33:2675-82.
- 368 [24] Slomovitz B, Gourley C, Carey MS, Malpica A, Shih IM, Huntsman D, et al. Low-grade
369 serous ovarian cancer: State of the science. *Gynecol Oncol.* 2020;156:715-25.
- 370 [25] Gershenson DM. Low-grade serous carcinoma of the ovary or peritoneum. *Ann Oncol.*
371 2016;27 Suppl 1:i45-i9.
- 372 [26] Langdon SP, Herrington CS, Hollis RL, Gourley C. Estrogen Signaling and Its Potential as a
373 Target for Therapy in Ovarian Cancer. *Cancers (Basel).* 2020;12.
- 374 [27] Marchetti C, De Felice F, Ergasti R, Scambia G, Fagotti A. Letrozole in the management of
375 advanced ovarian cancer: an old drug as a new targeted therapy. *Int J Gynecol Cancer.*
376 2020;30:1058-64.
- 377 [28] Gershenson DM, Sun CC, Iyer RB, Malpica AL, Kavanagh JJ, Bodurka DC, et al. Hormonal
378 therapy for recurrent low-grade serous carcinoma of the ovary or peritoneum. *Gynecol Oncol.*
379 2012;125:661-6.
- 380 [29] Li H, Durbin R. Fast and accurate long-read alignment with Burrows-Wheeler transform.
381 *Bioinformatics (Oxford, England).* 2010;26:589-95.
- 382 [30] McKenna A, Hanna M, Banks E, Sivachenko A, Cibulskis K, Kernysky A, et al. The Genome
383 Analysis Toolkit: a MapReduce framework for analyzing next-generation DNA sequencing data.
384 *Genome research.* 2010;20:1297-303.
- 385 [31] Lai Z, Markovets A, Ahdesmaki M, Chapman B, Hofmann O, McEwen R, et al. VarDict: a
386 novel and versatile variant caller for next-generation sequencing in cancer research. *Nucleic
387 Acids Res.* 2016;44:e108.
- 388 [32] Cibulskis K, Lawrence MS, Carter SL, Sivachenko A, Jaffe D, Sougnez C, et al. Sensitive
389 detection of somatic point mutations in impure and heterogeneous cancer samples. *Nat
390 Biotechnol.* 2013;31:213-9.
- 391 [33] Garrison E, Marth G. Haplotype-based variant detection from short-read sequencing. *arXiv
392 preprint.* 2012;arXiv:1207.3907 [q-bio.GN].
- 393 [34] Mayakonda A, Lin DC, Assenov Y, Plass C, Koeffler HP. Maftools: efficient and
394 comprehensive analysis of somatic variants in cancer. *Genome Res.* 2018;28:1747-56.
- 395 [35] Kirkegaard T, Edwards J, Tovey S, McGlynn LM, Krishna SN, Mukherjee R, et al. Observer
396 variation in immunohistochemical analysis of protein expression, time for a change?
397 *Histopathology.* 2006;48:787-94.

398

399

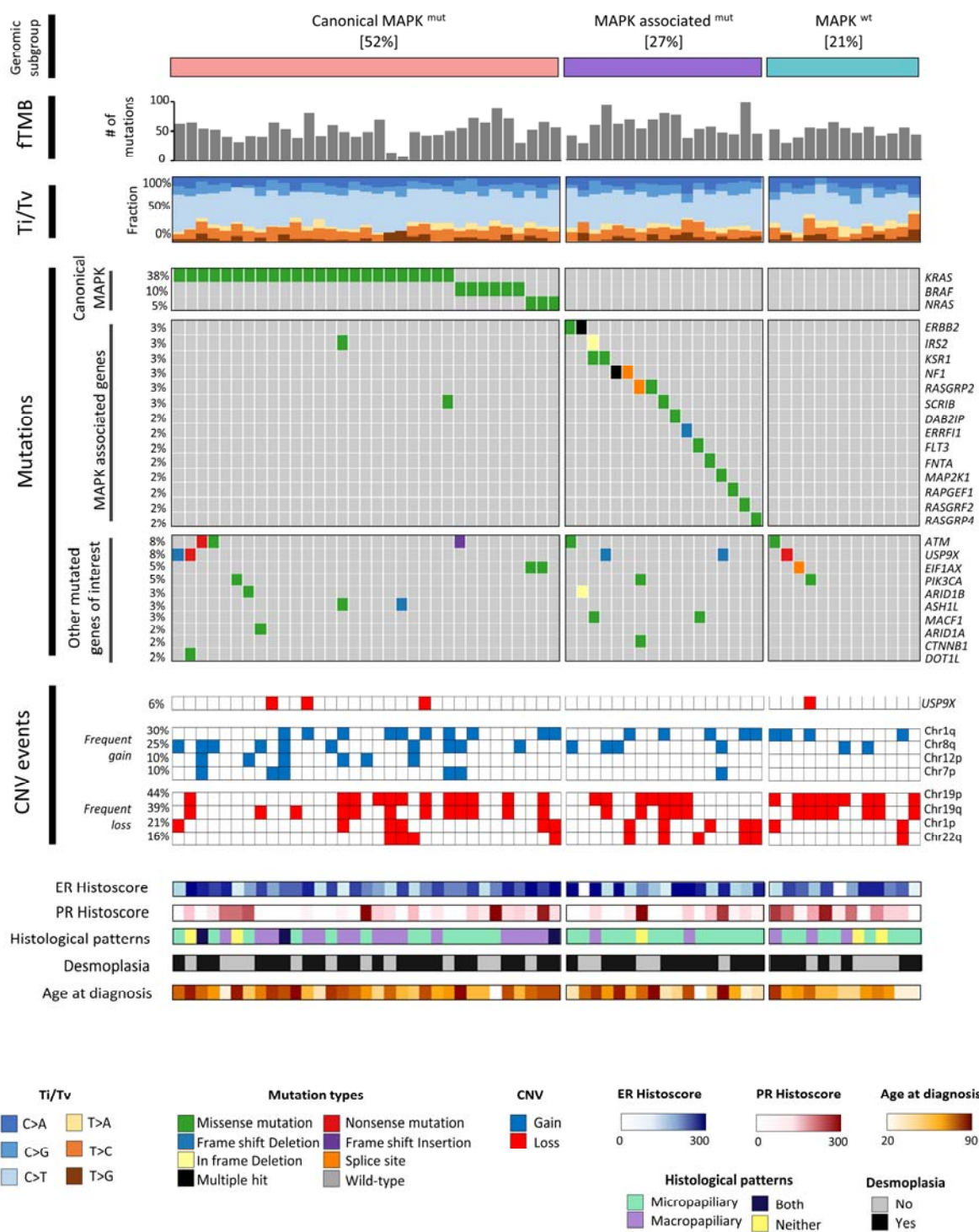
400

401 **Table 1.** Clinical characteristics of low grade serous ovarian carcinoma cases.

		N	%
Cases	Total	63	
Age	Median	54 years	Range 19-66
Centre	Edinburgh Cancer Centre	31	49.2
	University of Amsterdam Academic Medical Centre	10	15.9
	Netherlands Cancer Institute	22	34.9
FIGO stage	I	9	14.5
	II	5	8.1
	III	39	62.9
	IV	9	14.5
	NA	1	-
RD following cytoreduction	Macroscopic RD	34	55.7
	No macroscopic RD	27	44.3
	Unknown RD status	2	-
Neoadjuvant chemo	No	48	76.2
	Yes	15	23.8
Macropapillary invasion pattern	No	40	63.5
	Yes	23	36.5
Micropapillary invasion pattern	No	25	29.7
	Yes	38	60.3
Desmoplasia	No	23	36.5
	Yes	40	63.5
Diagnosis period	Pre-2000	10	15.9
	2000s	24	38.1
	2010 onward	29	46.0
Death details at last follow-up	Alive	25	39.7
	Died of OC	21	33.3
	Died of other causes	9	14.3
	Died, unknown cause	8	12.7
Outcome	5-year DSS	70.6%	95% CI 59.1-84.4
	Median follow-up	13.3 years	95% CI 6.36-NA

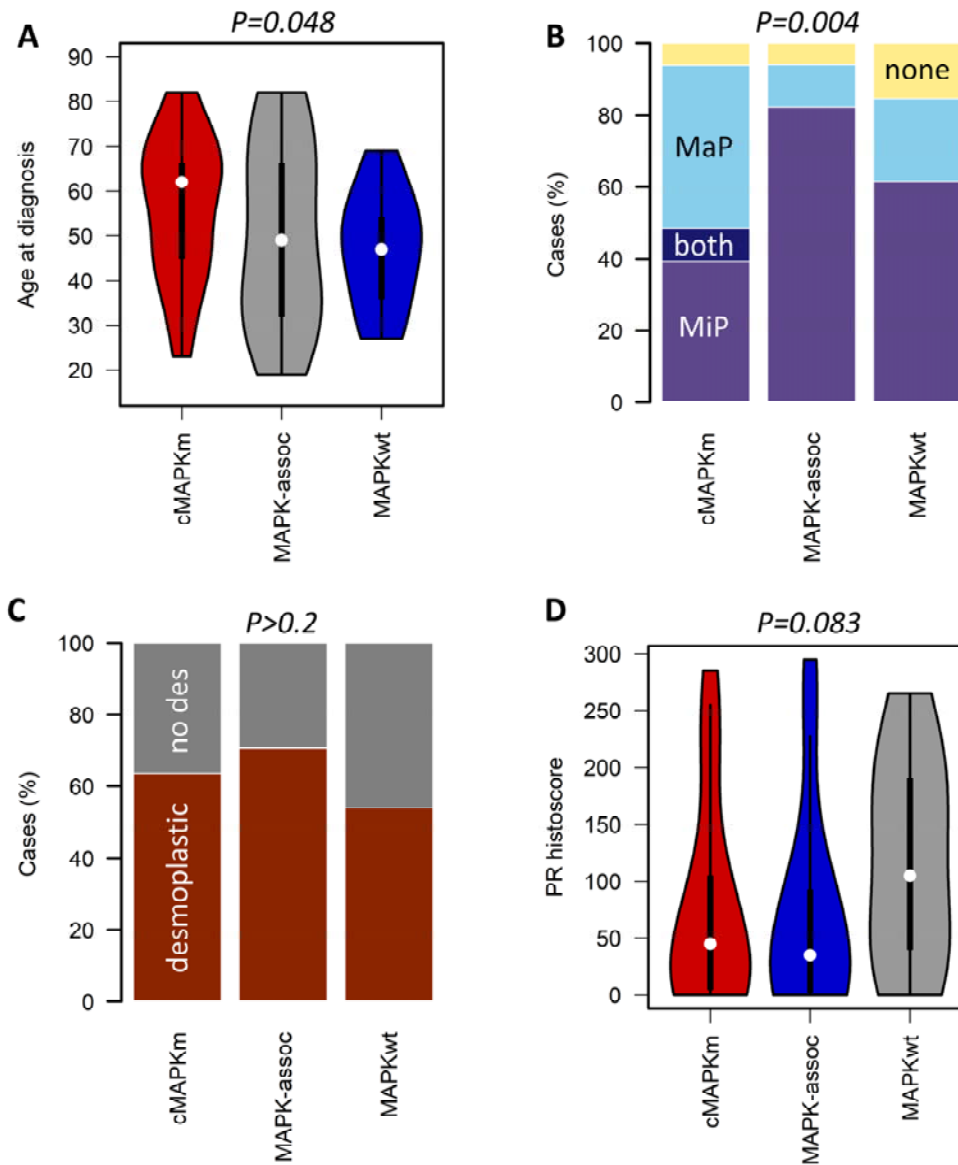
402 FIGO, International Federation of Gynecology and Obstetrics; NA, not available; RD, residual
 403 disease; OC, ovarian carcinoma; DSS, disease-specific survival

404



405

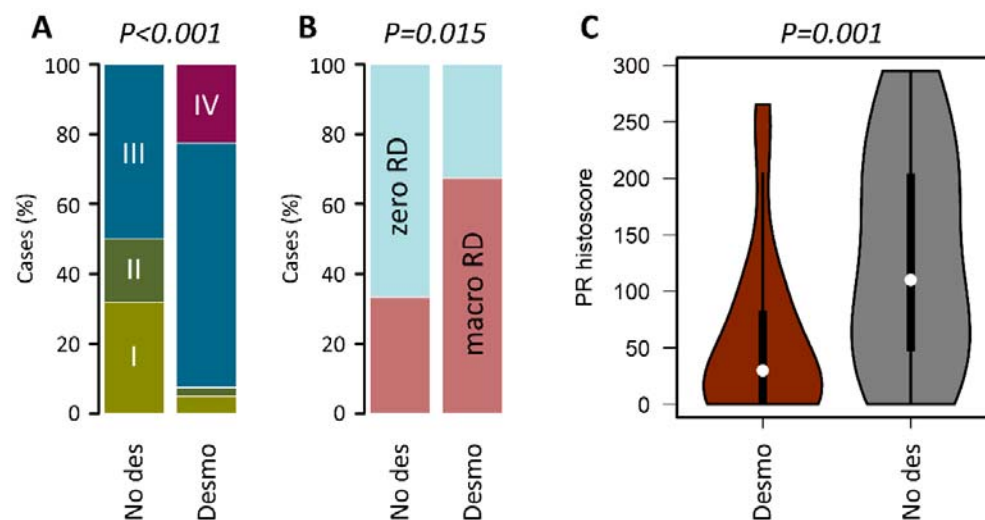
406 Figure 1: Molecular landscape of low grade serous ovarian carcinoma. ftMB, functional tumour
 407 mutational burden; Ti, transitions; Tv, transversions; SNV, single nucleotide variant; CNV, copy
 408 number variant ; cMAPK_m, canonical MAPK pathway mutation (KRAS/BRAF/NRAS); MAPK-
 409 assoc, MAPK-associated mutation; MAPK_{wt}, MAPK pathway wild-type.



410

411 Figure 2. Characteristics of genomic subgroups in low grade serous ovarian carcinoma. (A)
 412 Patient age at diagnosis across genomic subgroups; labelled P value represents the comparison
 413 between the canonical MAPK mutation (cMAPKm) group and the MAPK wild-type (MAPKwt)
 414 group. (B) Histopathological patterns across genomic subgroups; labelled P value represents
 415 comparison of MaP frequency in cMAPKm versus subgroups by Chi-squared test. (C)
 416 Desmoplasia across genomic subgroups; labelled P value represents comparison of
 417 desmoplasia frequency between all subgroups by Chi-squared test. (D) Progesterone receptor
 418 (PR) expression across genomic subgroups; labelled P value represents comparison of MAPKwt
 419 group versus other subgroups by Mann Whitney-U test. MiP: micropapillary; MaP:
 420 macropapillary. No des = no desmoplasia identified.

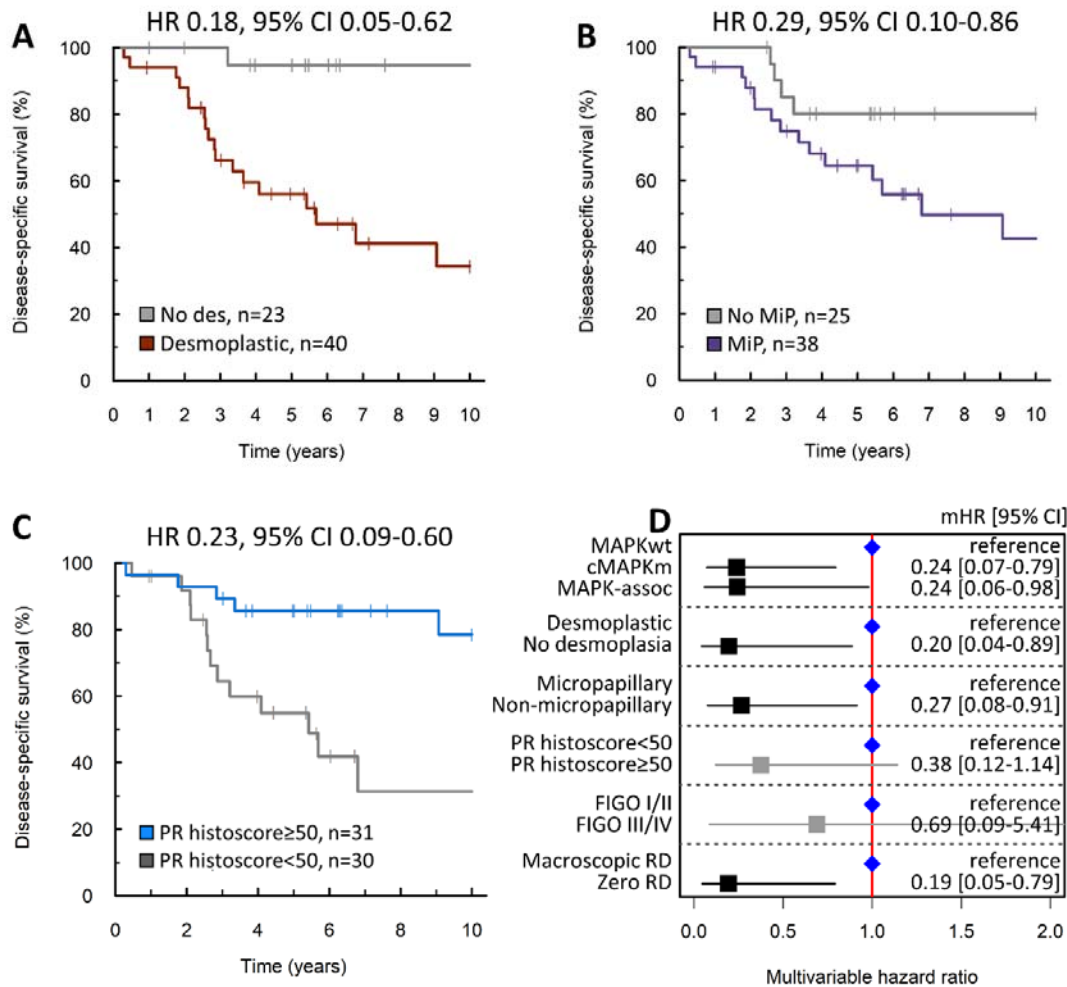
421



422

423 Figure 3. Features associated with desmoplasia in low grade serous ovarian carcinoma. (A)
424 Distribution of stage at diagnosis between tumours with and without desmoplasia. (B) Distribution
425 of stage at diagnosis between tumours with and without desmoplasia. (C) Progesterone receptor
426 (PR) expression between cases with and without desmoplasia. Desmo = desmoplastic; No des =
427 no desmoplasia identified; zero RD = zero macroscopic residual disease after debulking surgery;
428 macro RD = macroscopic residual disease after debulking surgery.

429



430

431 Figure 4. Impact of low grade serous ovarian carcinoma features on disease-specific survival. (A)
 432 Disease-specific survival (DSS) of patients with tumours demonstrating desmoplasia. (B) DSS of
 433 patients with tumours demonstrating the micropapillary (MiP) pattern of invasion. (C) DSS of
 434 patients with tumours expressing progesterone receptor (PR). (D) Forest plot summarising
 435 multivariable survival analysis of low grade serous ovarian carcinoma features. HR, hazard ratio;
 436 95% CI, 95% confidence interval; mHR, multivariable HR; no des, no desmoplasia identified; RD,
 437 residual disease; cMAPKm, canonical MAPK pathway mutation (KRAS/BRAF/NRAS); MAPK-
 438 assoc, MAPK-associated mutation; MAPKwt, MAPK pathway wild-type.