

1
2
3
4
5
6
7
8
9
10
11
12
13
14
15
16
17
18
19
20
21
22
23
24
25
26
27
28
29

**Environmental pollutants and essential elements as regulators of miR-30b,
miR-223 and Let-7a microRNAs expression in maternal sera from the NEHO cohort**

Valeria Longo*, Gaspare Drago*, Alessandra Longo, Silvia Ruggieri, Mario Sprovieri[§],
Fabio Cibella and Paolo Colombo

Institute for Biomedical Research and Innovation, National Research Council of Italy (IRIB-CNR),
Via Ugo La Malfa 153, 90146 Palermo, Italy

[§]Institute of Anthropic Impacts and Sustainability in Marine Environment, National Research
Council of Italy (CNR-IAS), via del Mare 3, 91021 Torretta Granitola, Trapani, Italy.

*Equally contributed to this manuscript

Corresponding Author:
Paolo Colombo
Istituto per la Ricerca e l’Innovazione Biomedica (IRIB)
del Consiglio Nazionale delle Ricerche
Via Ugo La Malfa 153
90146 Palermo
Italy
phone +39 91 6809535
e-mail paolo.colombo@irib.cnr.it

30 **ABSTRACT**

31

32 **Background:** Birth cohorts of women living in highly industrialized areas provide an ideal setting
33 for studying the correlation between environmental exposure and health.

34 **Objectives:** To evaluate serum microRNA expression in response to environmental contaminants in
35 68 healthy pregnant women from the NEHO birth cohort.

36 **Methods:** Serum contaminants were determined by GC-MS/MS and ICP-MS/MS. Serum
37 microRNA expression was determined by qPCR. Associations between miRNA Δ CTs and single
38 serum element levels were tested by linear regression models, while whole mixture effect was
39 studied by WQS regression analysis.

40 **Results:** In separate regression models, a positive association was found between miR-223 Δ CT
41 and concentrations of Se and Zn, while a negative association between miR-30b and Hg levels was
42 observed. Similar regression models were also conducted using tertiles of each chemical as
43 independent variables. In this setting, the Let-7a Δ CT was decreased in the comparison between
44 medium and low tertiles of Se. The highest tertiles of Zn and p,p'-DDE showed a significant
45 association with increasing levels of miR-223 Δ CT with respect to the lower tertile; moreover, miR-
46 30b Δ CT was reduced in the comparison between high and low tertiles of Hg. The observed data
47 were confirmed by fold-change analysis. A WQS analysis built on tertiles of contaminant
48 distribution revealed a significant mixture effect on the expression of the analyzed miRNAs. The
49 inverse association between Let-7a Δ CT and the WQS index was dominated by Zn, Se, Cu, Hg and
50 HCB. Moreover, miR-223 Δ CT was positively associated with the WQS index, where p,p'-DDE,
51 Zn and Se showed the greatest contributions to the association. Conversely, the reduction of miR-
52 30b Δ CT was mainly driven by Hg and Se.

53 **Discussion:** This study allowed us to characterize the role of prolonged exposure to environmental
54 contaminants influencing the expression of circulating miRNAs in the serum of women in the last
55 trimester of pregnancy.

56

57 INTRODUCTION

58 The exponential growth of the world economy and, with that, exploitation of resources and
59 industrial production caused an unprecedented transfer of contaminants in the environment with
60 multiple impacts on health. These chemicals can enter the human body through various routes:
61 ingestion of chemicals via the consumption of contaminated food or water, inhalation of airborne
62 pollutants through the respiratory system as well as dermal absorption through the skin. This
63 presents a highly problematic issue in everyday life and, particularly, in pregnancy due to potential
64 fetal exposure during a very vulnerable phase of development. A paradigmatic example is the
65 adverse effects on the child from high maternal prenatal mercury exposure, as reported in the
66 Minamata accident, with an overwhelming incidence of symptomatic mothers giving birth to
67 children with serious neurologic diseases (Ekino et al. 2007). Life *in utero* is considered a
68 particularly sensitive period during which maternal exposure to unfavorable conditions may not
69 only influence fetal development and induce adverse pregnancy outcomes but also have long-term
70 effects influencing offspring susceptibility to diseases later in adulthood. This causality concept is
71 known as the Developmental Origins of Health and Disease (DOHaD) or Barker hypothesis (Barker
72 1993). Various studies have already described associations between prenatal toxicant exposures and
73 impaired birth and childhood outcomes (Barouki et al. 2012; Deng et al. 2016; Lamichhane et al.
74 2015; Rahman et al. 2015; Stolevik et al. 2013) showing the extraordinary power of prospective
75 pregnancy or birth cohort studies to examine the potential health effects of developmental exposure
76 to chemicals. In this respect, birth cohort studies provide the most suitable design for assessing the
77 association of early-life adversities occurring at critical developmental windows with their possible
78 long-lasting effects on postnatal health and well-being.

79 Recently, the International Centre of Advanced Study in Environment, Ecosystem and
80 Human Health (CISAS) has developed a project (<http://www.cisas.cnr.it/>) aimed at investigating
81 environmental pollution and its connection with the ecosystem and human health in highly
82 contaminated areas of southern Italy monitoring pollutant concentrations in human tissues and also
83 performing *in vitro/ex vivo* studies (Bocca et al. 2020; Drago et al. 2020; Longo et al. 2019; Longo
84 et al. 2021; Montalbano et al. 2020; Traina et al. 2021).

85 Augusta Bay is a ~25km² marine coastal area, located in southern Italy (Figure 1) and
86 hosting, since 1950s, one of the largest petrochemical plant in Europe, with associated oil refineries
87 and a chloralkali plant. Decades of uncontrolled industrial discharges led to a major historical
88 contamination of sediments with mixtures of trace metals (Hg, Methyl-Hg, Pb, Cu, Zn, Cd, etc.)
89 and organic compounds (mainly, aliphatic hydrocarbons, PCBs, PAHs and HCB) (Bellucci et al.
90 2012; Salvagio Manta et al. 2016; Sprovieri et al. 2011). Also, a relevant number of pharmaceutical

91 products were detected at relatively high toxic levels in recent sediments of the bay while a number
92 of classes of ionic surfactants (alkylsulfonic acids, alkylbenzensulfonic acids, dodecyl- and
93 tetradecyl-polyethoxy sulfates), non-ionic surfactants (polyethoxylated alcohols) and personal care
94 components (cocamidopropylbetaine, dodecyldimethylamine oxide, cocamide- and similar
95 compounds) were measured in seawater (Feo et al. 2020). Significant mercury evasion processes to
96 the atmosphere were quantitatively estimated (Bagnato et al. 2013; Sprovieri et al. 2011).
97 Bioaccumulation of contaminants in marine edible organisms were reported by Traina and
98 coworkers (Traina et al. 2021) while Di Bella and coworkers (Di Bella et al. 2020) documented
99 effects of multiple pollution on commercial milk and meat samples collected from local markets in
100 surrounding area. This highly heterogeneous system of pollution sources and pathways
101 characterizing the Augusta area offers a multi-exposure setting with a highly complex (and only
102 partially classified and quantified) mixture of pollutants that directly affect the residing population
103 with major effects of health implications (Zona et al. 2019). Nevertheless, establishing
104 pathophysiological causal links between environmental pollutants and health consequences remains
105 a priority challenge due to the multi-factorial dynamics of exposures (Mudu et al. 2014). To define
106 the totality of environmental exposures, the concept of exposome has been developed on the
107 attempt to identify chemical pattern of exposure relevant for adverse health effects, thus
108 complementing the contribution of life style factors and genomic susceptibility to human disease
109 development (Wild 2005).

110 Biomonitoring of organic and inorganic substances in the blood of people is an ideal
111 approach to investigating causal relationships between environmental exposure and human health.
112 Moreover, biomonitoring allows direct assessment of the distribution of risk factors in the
113 population, integrating the individual variability of exposures, as well as the different capacity to
114 metabolize and transform the chemicals present in the body (Louro et al. 2019). Only a small
115 portion of risk for chronic diseases can be explained by genetic factors, while a large portion of the
116 remaining risk can be attributed to the impact of contaminants found in the blood (Rappaport 2016).
117 Human blood is a commonly used sample matrix in clinical as well as epidemiological studies. A
118 large set of chemicals from food, drugs, household chemicals, and environmental pollutants can
119 enter the bloodstream and affect cell viability. The concept of ‘blood exposome’ includes
120 investigation of association models on potentially all the chemical contaminants measured in human
121 blood (Rappaport et al. 2014) and interpreting this distribution in terms of phenotypes and
122 physiology impact and to provide robust estimates of risk for acute and chronic diseases (Dennis et
123 al. 2017).

124 Mammalian genes are susceptible to changes depending on their environment, influencing
125 disease development and promoting perdurable epigenetic changes (Junien et al. 2016). Such
126 epigenetic modification includes histone modification, DNA methylation and microRNA (miRNA)
127 gene silencing. All of these are closely linked to each other and influence protein synthesis patterns
128 whose perturbation may lead to dysfunction. Currently, many studies suggested that epigenetic
129 modification can play an important role in the pathogenesis of some multifactorial diseases
130 (Apicella et al. 2019; Arck and Hecher 2013; Boosani and Agrawal 2016).

131 MicroRNAs are highly conserved small single-stranded non-coding RNA (18 ~ 25
132 nucleotides) considered a major category among the noncoding RNA fraction that regulates gene
133 expression at the post-transcriptional level (Miguel et al. 2020). Different miRNAs are associated
134 with several metabolic pathways, including lipid metabolism, glucose metabolism, food intake,
135 body weight homeostasis, inflammation, oxidative stress, expression of several cytokines, and
136 angiogenesis in obesity. Circulating microRNAs may reflect these alterations in tissue expression
137 and intracellular signaling, supporting their utility as novel and minimally invasive biomarkers of
138 environmental exposure to pollutants (Wu et al. 2021).

139 In this study, a random sample of 68 pregnant women, living in the Augusta area, was
140 enrolled from the NEHO cohort (Ruggieri et al. 2019). A multipollutant analysis was performed to
141 explore the correlation between the expression levels of miR-30b, miR-223 and Let-7a and the
142 presence of a suite of inorganic and organic elements in the sera of such women. The aim of the
143 study was to evaluate perturbations in the expression of relevant circulating immune-related
144 miRNAs in women in the last trimester of pregnancy in response to long-lasting chronic
145 environmental exposure.

146

147 **MATERIAL AND METHODS**

148 *Study population*

149 The present study included 68 women followed up in the larger context of the NEHO birth cohort.
150 The studied individuals reside in the Augusta-Priolo area officially included in the National
151 Remediation Plan by the Italian Ministry of Environment (NPCS) and in a surrounding area (Local
152 Reference Area [LRA]) reported as a ‘local control’ (Carere et al. 2016; Zona et al. 2019) . The
153 NEHO cohort methods are described in detail elsewhere (Ruggieri et al. 2021). Briefly, between
154 January 2018 and January 2020, the NEHO cohort enrolled 561 pregnant women residing, for at
155 least the last year before enrollment, in the NPCS and LRA, with comparable socio-demographic
156 characteristics. Detailed information was collected from the mothers using web-based
157 questionnaires at enrollment as well as at 6, 12, and 24 months after delivery. Moreover, general
158 and clinical details about the type of delivery and birth outcome (i.e. weight, length, head
159 circumference) were collected by healthcare personnel at delivery. Maternal blood samples were
160 gathered at enrollment. All mothers included in this research do not evidence i) any specific chronic
161 diseases (such as diabetes, hypertension, etc.) and ii) any critical complications during pregnancy
162 diagnosed previous to signing informed consent.

163

164 *Blood sampling and handling*

165 After separation of the serum by centrifugation, the samples were temporarily stored at -20°C in
166 each maternal unit and then transported on dry ice to the NEHO biobank for long-term storage at -
167 80°C.

168 The study was approved by the relevant Ethics Committee (Comitato Etico Catania 2, 11 July 2017,
169 n. 38/2017/CECT2), and strictly followed the Declaration of Helsinki. All the adopted procedures
170 were compliant with the General Data Protection Regulation (UE 2016/679) and Italian laws
171 concerning data protection. To this aim, all questionnaire data and biological samples were
172 pseudonymized using ID tracking numbers.

173

174 *Analytical methods for trace metals and organic compounds*

175 The analyses of Persistent Organic Pollutant (POP) were performed at the National Institute for
176 Health and Welfare, Chemical Exposure Unit, Kuopio, Finland, with an Agilent 7000B gas
177 chromatograph triple quadrupole mass spectrometer (GC-MS/MS). Ethanol and ¹³C-labeled internal
178 standards were added to samples. Dichloromethane-hexane was added for extraction, followed by
179 the addition of activated silica gel to bind the sample water and ethanol. The dichloromethane-
180 hexane layer was poured into a solid phase extraction cartridge (SPE cartridge) containing 44%

181 sulfuric acid silica, 10% silver nitrate impregnated silica, and a mixture of sodium sulfate and silica.
182 The lower semi-solid layer was extracted again with dichloromethane-hexane that was also poured
183 into an SPE-cartridge. Elution of the SPE-cartridge was continued with dichloromethane-hexane
184 and the eluate was concentrated for GC-MS/MS. The quantification was performed by multiple
185 reaction monitoring using an Agilent 7890A gas chromatograph/Agilent 7010 triple quadrupole
186 mass spectrometer with DB-5MS UI column (J&W Scientific, 20 m, ID 0.18 mm, 0.18 μm).
187 Reference material for human serum determination of organic contaminants (SMR 1589a) from the
188 National Institute of Standards and Technology (Gaithersburg, MD, USA) was analysed to estimate
189 the accuracy: recoveries for each analyte of PCBs, p,p'-DDE and HCB ranged between 94% and
190 104%. Analytical precision was routinely better than 3% RSD%.

191 Analyses of trace element were performed in the micropollutant unit laboratory of LERES
192 (Laboratoire d'Etude et de Recherche en Environnement et Santé) at the French School of Public
193 Health - EHESP (Rennes, France) following the procedures reported by (Davies et al. 2021). The 68
194 serum samples were analyzed by ICP-MS/MS after a mineralization step. Briefly, a volume of
195 serum was mineralized by adding nitric acid and heated with a heating block (Hotblock Pro, model
196 SC-189, Environmental Express) at 83°C for 4 hours. The 1:20-diluted sample was then analyzed
197 by a plasma inductive system coupled with tandem mass spectrometry detection (ICP-MSMS 8800,
198 Agilent Technologie). The use of the tandem mass spectrometer and oxygen mode allowed
199 interference to be managed, in particular for the determination of manganese, selenium and arsenic.
200 Matrix effects correction has been guaranteed with the use of internal standards (Sc, Ge, ^{77}Se , Rh,
201 Re and Ir). This made possible to check the absence of drift (signal variation less than 25%). For
202 ^{77}Se an internal standard was added to the mixture to allow quantification of Se by isotopic dilution
203 to resolve persistent matrix effects. Certified or internal control materials (measured additions) of
204 blood and serum were added to the series.

205

206 ***Serum miRNA extraction and expression analysis***

207 Total RNAs enriched with miRNAs were extracted from 200 μl of maternal serum samples
208 according to the miRNeasy Serum/Plasma Kit manufacturer's protocol (Qiagen, Milan, Italy). The
209 *Caenorhabditis elegans* miR-39 exogenous control (Qiagen, Milan, Italy) was added during the
210 extraction procedure in all samples (3.5 μl /sample at a concentration of 1.6×10^8 copies/ μl). The
211 total RNA and miRNA concentrations were evaluated by NanoDrop spectrophotometer analysis
212 (Thermo Fisher Scientific, Monza, Italy). The templates (500 ng for each samples) were retro-
213 transcribed using the miScript II RT Kit (Qiagen, Milan, Italy), and the resulting cDNAs were
214 diluted up to 200 μl . Then, the real time PCR analyses (StepOnePlus™ Real Time PCR System,

215 Applied Biosystems) were performed starting from 1 ng of cDNA/well using the SYBR® Green
216 PCR miScript kit (Qiagen, Milan, Italy); each reaction was in a final volume of 25 µl/well. The real
217 time PCR conditions were: 95°C for 15 minutes followed by 40 cycles of three step PCR;
218 denaturation at 94°C for 15 seconds; annealing at 55°C for 30 seconds; extension at 70°C for 30
219 seconds. The expression levels for the selected miRNAs (miR-30b, miR-223 and Let-7a) were also
220 reported as fold changes using the $2^{-\Delta\Delta CT}$ method. MiRNA expression was considered changed
221 between the two groups (control and treated cells, respectively) if it met the following criteria: fold
222 change <0.5 (down-regulated), fold change >2 (up-regulated), quantification cycle (CT) value <35.

223

224 *Statistics*

225 Continuous variables are reported as mean \pm SD or median and interquartile range (IQR), for
226 normally and non-normally distributed variables, respectively, while categorical variables are
227 reported as numbers and percentages. For continuous variables, one-way ANOVA and the Mann-
228 Whitney *U* test were used to test differences between the NPCS and LRA, when appropriate. A chi-
229 squared test was used to study the association between area of residence (NPCS and LRA) and
230 categorical variables.

231 The Spearman rank correlation test was used to check for possible pairwise correlations between
232 each \log_2 transformed contaminant concentration, and the miRNA ΔCT .

233 A multiple linear regression model was used to test the possible association between \log_2
234 concentration of bio-monitored substances and miRNA ΔCT . Each model was corrected by
235 maternal age and Body Mass Index (BMI).

236 To account for the collinearity among the available contaminants, Weighted Quantile Sum (WQS)
237 regression analysis was conducted to derive the mixture indices associated with miRNA ΔCT
238 values using the “gWQS: generalized Weighted Quantile Sum regression” package in R. Two
239 separate WQS indices were derived: an index positively associated with ΔCT of each considered
240 miRNA, and an index negatively associated with ΔCT . A linear link function connecting outcome
241 mean to a weighted sum of exposure tertiles was used.

242 Multiple linear regression models were created for each substance using the categorization into
243 tertiles, using the lowest tertile as reference category. Also in this case, each model was adjusted for
244 maternal age and BMI.

245 All tests were conducted at a nominal alpha error of 0.05, and no correction for multiple
246 comparisons was performed. All the analyses were performed in R software, version 4.0.2

247

248

249 **RESULTS**

250 *Characteristics of study population*

251 In this study, 68 healthy pregnant women, enrolled in the NEHO birth cohort and residing in
252 both the NPCS (n= 33) and LRA (n=35) of the Augusta-Priolo study site, were randomly selected.
253 The geographical distribution of places of residence is reported in Figure 1. The analysis of
254 demographic and gestational information (Table 1) shows that the two groups of mothers are
255 homogeneous for age, BMI, weight gain, marital status, educational levels, gestational length
256 (weeks), and birth type (Caesarean section or vaginal).

257 *Evaluation of maternal serum contaminant levels*

258 The dosage of a total of 10 POPs (HCB, p,p'-DDE, PCB118, PCB138, PCB153, PCB180),
259 inorganic pollutants, and essential trace elements (Hg, Cu, Se, and Zn) was carried out on maternal
260 serum samples (n=68) as above described. The concentrations of trace metals and POPs are
261 reported in Table 2, with basic statistics. The Mann-Whitney *U* test highlighted a significant
262 difference between mothers from the NPCS and LRA for Cu (p=0.008), Se (p=0.002), and Zn
263 (p=0.003).

264 *Analysis of miR-223, miR-30b and Let-7a in maternal serum*

265 To evaluate possible epigenetic modifications induced by contaminants exposure, the
266 maternal serum levels of relevant miRNAs were investigated. In particular, we analyzed the
267 expression levels of miR-223, miR-30b, and Let-7a by real time PCR in the 68 serum samples. The
268 Mann-Whitney *U* test (Supplementary Table 1) did not show significant differences in miRNA
269 Δ CT values between the mothers from NPCS and LRA (miR-223 p=0.109; miR-30b p=0.729 and
270 Let-7a p=0.470). These data are confirmed by the EDA plot displayed in Figure 1s, where the
271 serum miRNA Δ CT are plotted according their geographical distributions, expression levels, and
272 relative frequencies.

273 The dependence between multiple variables in the group of mothers was investigated by
274 means of a Pearson's correlation matrix between the miRNA expression levels and the
275 concentration of maternal trace elements. The results showed a weakly negative and significant
276 correlation between miR-30b and Hg (ρ =-0.28; p <0.0048). Similarly, miR-223 appears correlated
277 to serum Se and Zn concentrations (ρ =0.28 and ρ =0.32, respectively). Moreover, among the
278 evaluated environmental toxicants, PCBs showed a strong pairwise correlation among them
279 (ranging from 0.60 to 0.98), also showing correlations to other POPs (HCB and p,p'-DDE), with
280 correlation coefficients ranging from 0.69 to 0.75, respectively (see Figure 2 for details).

281 We analyzed the effect of the serum trace elements concentration on the Δ CT of each
282 miRNA using multiple linear regression models, corrected for maternal age and pre-pregnancy BMI
283 (Figure 3 Panels A-C). A significant positive association was found between increasing
284 concentrations of Se and Zn and miR-223 Δ CT level ($\beta_{\text{Se}}=1.56$, 95% $\text{CI}_{\text{Se}}=0.09-3.02$; $\beta_{\text{Zn}}=1.67$,
285 95% $\text{CI}_{\text{Zn}}=0.33-3.03$). Conversely, an inverse association emerged between increasing Hg level and
286 miR30-b Δ CT ($\beta_{\text{Hg}}=-0.66$, 95% $\text{CI}_{\text{Hg}}=-1.27- -0.04$). No specific association was observed between
287 Let-7a expression and contaminants concentration.

288 To evaluate the association between tertiles of each contaminant and miRNA expression, multiple
289 linear regression models were computed. As shown in Figure 4 Panel A, we found a significant Let-
290 7a Δ CT reduction ($\beta =-1.82$; $p=0.0009$) in the comparison between the medium and low tertiles of
291 Se. MiR-223 Δ CT showed a significant positive association with the high tertiles of Zn and p,p'-
292 DDE ($\beta_{\text{Zn}}=1.02$; $p=0.024$ and $\beta_{\text{DDE}} =0.93$ $p= 0.050$ - Figure 4, Panel B). As concerns miR-30b, we
293 found a significant reduction of Δ CT in correspondence with the high tertile of Hg ($\beta =-1.80$;
294 $p=0.021$) (Figure 4 panel C).

295 Furthermore, the expression levels for the selected miRNAs were also reported in fold
296 change using the $2^{-\Delta\Delta\text{CT}}$ method, showing a 3.2-fold increase in the expression of Let-7a in the
297 medium vs low tertiles of Se. For miR-30b, we observed a 3.5-fold increase in the high vs low
298 tertiles for Hg, a 2.4-fold increase in the medium vs low tertiles of p,p'-DDE, a 2.2 fold increase for
299 PCB138 and a 2.5 fold increase for PCB 153. Conversely, we observed a 0.5 fold reduced
300 expression of miR-223 in the high vs low tertiles for Zn and p,p'-DDE concentrations, respectively.
301 Table 3 reports the miRNA expression values, in fold change, obtained from all toxicants and trace
302 element concentration tertiles.

303

304 ***Multipollutant analysis***

305 According to the previous data reported in Figures 2-4, we decided to apply a multipollutant
306 analysis to estimate the relative weights of the serum toxicants, allowing us to make inferences
307 concerning the relative importance of exposures. We decided to build the WQS regression analysis
308 on tertiles of distribution of each contaminant, according to low, medium, and high levels of
309 exposure. The WQS regression showed a significant inverse association between Let-7a Δ CT and
310 the WQS index ($\beta= -1.005$, $p=0.034$). The relative weights of Zn and Se predominated in the WQS
311 index, followed by Cu, Hg, and HCB, indicating their importance in influencing Let-7a (Figure 5,
312 Panel A) expression. As concerns miR-223, we found that the WQS index was significantly
313 associated with an increase of Δ CT ($\beta =1.369$, $p=0.005$). Once again, Zn dominated the weights of
314 the WQS index (Figure 5, Panel B). This was followed by the weight of p,p'-DDE and Se. Lastly,

315 we also found a significant association between the WQS index and Δ CT reduction of miR-30b (β
316 $=-1.088$, $p=0.063$), while the bad actors were represented by Hg, followed by Se (Figure 5, Panel
317 C).
318

319 **DISCUSSION**

320 Humans are regularly exposed to a large number of environmental chemicals that have
321 potentially toxic effects on health. Exposure to environmental agents may lead to epigenetic
322 reprogramming, including changes in non-coding RNAs signatures, which can contribute to the
323 induction of developmental changes or lead to disease progression and/or pathophysiology state
324 (Miguel et al. 2020). Until now, most studies have focused on chemical exposures including
325 cadmium (Brooks and Fry 2017), phthalates (LaRocca et al. 2016), arsenic, and endocrine
326 disrupting chemicals (Sood et al. 2017) in association with placental miRNAs. Indeed, miRNAs are
327 considered guardians of cellular homeostasis, regulating several processes including stress
328 responses. Environmental pollutants could interact with the miRNA biosynthesis machinery,
329 thereby directly inducing changes in miRNA expression levels (Izzotti and Pulliero 2014; Ligorio et
330 al. 2011). In particular, miR-223 is widely involved in the regulation of several cellular processes
331 such as cancer, acute lung injury, rheumatoid arthritis, autoimmune and inflammatory diseases
332 (Haneklaus et al. 2013; Mancuso et al. 2019; Neudecker et al. 2017). MiR-30b, a member of the
333 miR-30 family, has been implicated in the pathogenesis of multiple diseases, including various
334 types of cancer, cardiovascular, renal and neurological disorders (Zhang et al. 2021). The Let-7
335 family of miRNAs has emerged as a central regulator of systemic energy homeostasis and it
336 displays remarkable plasticity in metabolic responses to nutrients availability and physiological
337 activities (Jiang 2019).

338 Following this line of evidence, we evaluated the maternal serum levels of relevant micro-
339 RNAs such as Let-7a, miR-223 and miR-30b by Real Time PCR. First of all, we analyzed the level
340 of expression of the selected microRNAs within the two groups of mothers (NPCS vs LRA)
341 showing a non-significant association between the level of expression of the single miRNAs and the
342 geographical localization participants' dwellings (Table 1S and Figure 1S). Furthermore, a
343 Pearson's correlation matrix between the level of expression of the three miRNAs and the
344 concentration of maternal serum contaminants allowed us to investigate the dependence between
345 multiple variables in the selected mothers from the NEHO cohort. The result reported within Figure
346 2 shows the pairwise correlation coefficients between maternal serum biomonitoring data and the
347 miRNAs with particular references to Hg, Se and Zn suggesting a correlation between the different
348 toxicants and the expression level of the selected microRNAs. Starting from these observations, we
349 analyzed the cohort in separate linear regression models for Let-7a, miR-223 and miR-30b adjusted
350 for maternal age and pre-pregnancy BMI. In this setting, we observed a significant association
351 between the level of expression of miR-223 and the serum concentration of Se and Zn and an
352 inverse association between the expression of miR-30b and the serum concentration of Hg (Figure

353 3). Then, we applied separate multiple linear regression models to the groups of contaminants and
354 miRNAs exploring the specific effects of each pollutant, categorized into tertiles according to low,
355 medium and high levels of exposure. In each model, the lower tertile was used as reference.
356 According to this strategy, we observed that Let-7a showed a significant reverse association with
357 the medium level of Se while the higher tertile of Zn and p,p'-DDE showed significant positive
358 associations with the miR-223 Δ CT. Moreover, the higher tertile of Hg presented an inverse
359 association with miR-30b (see Figure 4 panels A-C for details).

360 These findings were further confirmed as shown within Table 3, where the correlation
361 between miRNAs response and the Low, Medium and High tertiles of each pollutant were reported
362 as fold changes in terms of miRNAs expression. In particular, a significant positive increase of Let-
363 7a expression is also evident in the medium vs low tertiles of Se and in the miR-30b in the high vs
364 low tertiles for Hg and in the medium vs low tertiles of p,p'-DDE, PCB138 and PCB 153.
365 Differently, a significant reduced expression emerges for the miR-223 in the high vs low tertiles for
366 Zn and p,p'-DDE concentration (see Table 3 for details).

367 However, this does not exclude indirect interactions between independent stressors and
368 synergistic impact on health even at concentrations lower than their individual recognized toxicity
369 thresholds. Some chemicals at relatively lower toxicity doses may likewise be insidious (Barouki et
370 al. 2012), mainly during critical developmental periods of humans, where long-lasting exposures
371 may induce subtle epigenetic alterations leading to permanent changes that can possibly program
372 health trajectories throughout the rest of lifespan. Thus, we explored the effect of the complex
373 environmental mixtures of contaminants using the Weighted Quantile Sum (WQS) statistical
374 regression model (Lee et al. 2019; Tanner et al. 2020). This model constructs a weighted index
375 estimating the mixed effect of all predictor variables on an outcome, and the WQS regression result
376 indicates the respective importance of individual chemicals related to specific outcomes, thus
377 identifying driving elements also called “bad actors”. The contribution of each individual predictor
378 to the overall index effect may then be assessed by the relative strength of the weights the model
379 assigns to each variable. By means of mixture weight, we create a weighted index as a measure of a
380 mixture effect able to identify the relative weight of the different investigated substances on the
381 level of expression of circulating Let-7a, miR-223 and miR-30b miRNAs. The WQS regression
382 analysis showed a significant inverse association between Let-7a Δ CT and the relative weights of
383 Zn, Se, Cu, Hg and HCB indicating their importance in influencing Let-7a expression (Figure 5
384 panel A). As concerns miR-223, we found that the WQS index was significantly associated with the
385 increase of Δ CT where Zn and p,p'-DDE dominated the weights of the WQS index followed by the
386 Se (Figure 5 panel B). Lastly, we also found an association between the WQS index and Δ CT

387 reduction of miR-30b in association mainly to Hg and Se levels followed by the PCB153 (Figure 5
388 panel C). These preliminary results clearly suggest a real-life exposure to mixtures that women
389 experienced in a specific window of their pregnancy. The ensemble of this statistical approaches
390 demonstrates the role played by human exposure to mixtures of contaminants in the environment
391 with respect to single chemical impact (Braun et al. 2016). Thus, although the measured chemicals
392 in the NPCS and LRA mothers were generally lower than those reported in studies in highly
393 contaminated areas (Bocca et al. 2010) (Table 2) , evidence of exposure to the mixtures of
394 contaminants appears statistically measurable in terms of microRNAs expression. Noteworthy,
395 these effects appear from healthy mothers, with no previous report of preterm delivery or other pre-
396 existent pathologies. This implies that significant epigenetic changes, modulating the expression of
397 some microRNAs, represent a reliable clue for risk assessment of diseases in both mothers and
398 newborns. This emerges as a decisive outcome considering the reduced number of pollutants
399 measured in this research with respect +to the wider list of chemicals reported from Augusta area,
400 with their potential synergistic combination and definitively suggests a critical role that
401 biomonitoring of microRNAs could play in terms of hazard evaluation of environmental pollution
402 on human health. These epigenetic modifications integrate, in a sort of synthetic responses, the
403 effect of cocktails of pollutants in multi-environmental matrices on exposed individuals.

404 Understanding the molecular mechanisms by which a large set of different substances such
405 as dietary factors and/or environmental chemicals can influence the expression of circulating
406 microRNAs is an active area of research (Ross and Davis 2014). The reported results allowed the
407 identification of the relative weight of several different substances which seems to suggest the
408 importance of the redox dependent regulation for the maintenance of cell homeostasis and the role
409 of essential elements and miRNAs in this process. In fact, during pregnancy a higher frequency of
410 oxidative reactions have been reported (Bakacak et al. 2015) and the involvement of essential
411 elements and of the Let-7a, miR-223 and miR-30b have also been described (Ciesielska et al. 2021;
412 Kalinina et al. 2019). The mutual feedback regulation of ROS and miRNAs, i.e., the interplay
413 between the ROS action on expression of miRNAs and control of the ROS level via miRNAs
414 expression is beyond the aim of our study but a better comprehension of the hierarchy of redox-
415 dependent regulatory systems for the cell functioning is certainly of paramount importance for
416 future studies.

417

418

419 **Figure Legend**

420

421 **Figure 1. Geographical localization of the study area.** Left panel shows the geographical
422 localization of the Priolo-Augusta study area. The Right panel shows the localization of the
423 dwellings of the mothers in the area. Mothers residing in National Priority Contaminated Sites are
424 in red, mothers residing in the Local Reference Areas are in blue.

425 **Figure 2. Pearson's correlation matrix.** miRNA Δ CTs and maternal serum levels of
426 environmental toxicants and essential trace elements were analyzed in a correlation matrix.
427 Correlations with a p-value > 0.05 are left blank

428 **Figure 3. Linear regression models.** Panels A-C show linear models for Let-7a, miR-223 and
429 miR-30b, respectively. Each model was adjusted for maternal age and pre-pregnancy BMI.

430 **Figure 4. Multiple linear regression models for Let-7a, miR-223 and miR-30b Δ CTs.** Panels A-
431 C show linear models for Let-7a, miR-223 and miR-30b, respectively. Each exposure was
432 categorized into tertile, lower tertile was used as reference category. Each model was adjusted for
433 maternal age and pre-pregnancy BMI.

434 **Figure 5. WQS regression analysis.** Association between concentrations of biomonitored
435 substances and Let-7a (Panel A), miR-223 (Panel B) and miR-30b (Panel C) Δ CTs based on
436 weighted quantile sum (WQS) regression analysis.

437

438 **Figure 1s. EDA plots of serum miRNA Δ CTs.** Panels A-C display the distribution of the Let-7a;
439 miR-30b, miR223 microRNAs, respectively. The histograms report the relative frequency
440 distribution of all considered miRNAs. The box-plot, from left to right, shows, 5th, 25th, 50th
441 (median), 75th and 95th percentile. Red dots and blue dots represent subjects from Local Reference
442 areas and National Priority Contaminated Sites, respectively.

443

444 **Acknowledgments**

445 This Study was funded by the International Centre of advanced Study in Environment, ecosystem
446 and human Health (CISAS), a multidisciplinary project on environment/health relationships funded
447 by the Italian Ministry of Education, Universities and Research (MIUR) and approved by the
448 Interministerial Committee for Economic Planning (CIPE) – body of the Italian Government – with
449 Resolution no. 105/2015 of December 23, 2015

450

451

452 **REFERENCE**

453

- 454 Apicella C, Ruano CSM, Mehats C, Miralles F, Vaiman D. 2019. The role of epigenetics in
455 placental development and the etiology of preeclampsia. *International journal of molecular sciences*
456 20.
- 457 Arck PC, Hecher K. 2013. Fetomaternal immune cross-talk and its consequences for maternal and
458 offspring's health. *Nature medicine* 19:548-556.
- 459 Bagnato E, Sproveri M, Barra M, Bitetto M, Bonsignore M, Calabrese S, et al. 2013. The sea-air
460 exchange of mercury (hg) in the marine boundary layer of the augusta basin (southern italy):
461 Concentrations and evasion flux. *Chemosphere* 93:2024-2032.
- 462 Bakacak M, Kilinc M, Serin S, Ercan O, Kostu B, Avci F, et al. 2015. Changes in copper, zinc, and
463 malondialdehyde levels and superoxide dismutase activities in pre-eclamptic pregnancies. *Medical
464 science monitor : international medical journal of experimental and clinical research* 21:2414-2420.
- 465 Barker DJ. 1993. Fetal origins of coronary heart disease. *British heart journal* 69:195-196.
- 466 Barouki R, Gluckman PD, Grandjean P, Hanson M, Heindel JJ. 2012. Developmental origins of
467 non-communicable disease: Implications for research and public health. *Environmental health : a
468 global access science source* 11:42.
- 469 Bellucci LG, Giuliani S, Romano S, Albertazzi S, Mugnai C, Frignani M. 2012. An integrated
470 approach to the assessment of pollutant delivery chronologies to impacted areas: Hg in the augusta
471 bay (italy). *Environmental science & technology* 46:2040-2046.
- 472 Bocca B, Mattei D, Pino A, Alimonti A. 2010. Italian network for human biomonitoring of metals:
473 Preliminary results from two regions. *Annali dell'Istituto superiore di sanita* 46:259-265.
- 474 Bocca B, Ruggieri F, Pino A, Rovira J, Calamandrei G, Mirabella F, et al. 2020. Human
475 biomonitoring to evaluate exposure to toxic and essential trace elements during pregnancy. Part b:
476 Predictors of exposure. *Environmental research* 182:109108.
- 477 Boosani CS, Agrawal DK. 2016. Epigenetic regulation of innate immunity by micrnas.
478 *Antibodies* 5.
- 479 Braun JM, Gennings C, Hauser R, Webster TF. 2016. What can epidemiological studies tell us
480 about the impact of chemical mixtures on human health? *Environmental health perspectives*
481 124:A6-9.
- 482 Brooks SA, Fry RC. 2017. Cadmium inhibits placental trophoblast cell migration via mirna
483 regulation of the transforming growth factor beta (tgf-beta) pathway. *Food and chemical toxicology
484 : an international journal published for the British Industrial Biological Research Association*
485 109:721-726.
- 486 Carere M, Musmeci L, Comba P, Bianchi F, Lepore V, Pillozzi A. 2016. Study for the
487 environmental health characterization of the contaminated sites of gela and priolo. *Rapporti
488 ISTISAN* 2016.
- 489 Ciesielska S, Slezak-Prochazka I, Bil P, Rzeszowska-Wolny J. 2021. Micro rnas in regulation of
490 cellular redox homeostasis. *International journal of molecular sciences* 22.
- 491 Davies S, Briand V, Accrombessi M, Fievet N, Le Bot B, Durand S, et al. 2021. Pre-conception
492 serum ferritin concentrations are associated with metal concentrations in blood during pregnancy: A
493 cohort study in benin. *Environmental research* 202:111629.
- 494 Deng Q, Lu C, Li Y, Sundell J, Dan N. 2016. Exposure to outdoor air pollution during trimesters of
495 pregnancy and childhood asthma, allergic rhinitis, and eczema. *Environmental research* 150:119-
496 127.
- 497 Dennis KK, Marder E, Balshaw DM, Cui Y, Lynes MA, Patti GJ, et al. 2017. Biomonitoring in the
498 era of the exposome. *Environmental health perspectives* 125:502-510.

499 Di Bella C, Traina A, Giosue C, Carpintieri D, Lo Dico GM, Bellante A, et al. 2020. Heavy metals
500 and pahs in meat, milk, and seafood from augusta area (southern italy): Contamination levels,
501 dietary intake, and human exposure assessment. *Frontiers in public health* 8:273.
502 Drago G, Ruggieri S, Bianchi F, Sampino S, Cibella F. 2020. Birth cohorts in highly contaminated
503 sites: A tool for monitoring the relationships between environmental pollutants and children's
504 health. *Frontiers in public health* 8:125.
505 Ekino S, Susa M, Ninomiya T, Imamura K, Kitamura T. 2007. Minamata disease revisited: An
506 update on the acute and chronic manifestations of methyl mercury poisoning. *Journal of the*
507 *neurological sciences* 262:131-144.
508 Feo ML, Bagnati R, Passoni A, Riva F, Salvagio Manta D, Sprovieri M, et al. 2020.
509 Pharmaceuticals and other contaminants in waters and sediments from augusta bay (southern italy).
510 *The Science of the total environment* 739:139827.
511 Haneklaus M, Gerlic M, O'Neill LA, Masters SL. 2013. Mir-223: Infection, inflammation and
512 cancer. *Journal of internal medicine* 274:215-226.
513 Izzotti A, Pulliero A. 2014. The effects of environmental chemical carcinogens on the microrna
514 machinery. *International journal of hygiene and environmental health* 217:601-627.
515 Jiang S. 2019. A regulator of metabolic reprogramming: Microrna let-7. *Translational oncology*
516 12:1005-1013.
517 Junien C, Panchenko P, Pirola L, Amarger V, Kaeffer B, Parnet P, et al. 2016. [the new paradigm of
518 the developmental origin of health and diseases (dohad)--epigenetics and environment: Evidence
519 and missing links]. *Med Sci (Paris)* 32:27-34.
520 Kalinina EV, Ivanova-Radkevich VI, Chernov NN. 2019. Role of micrnas in the regulation of
521 redox-dependent processes. *Biochemistry Biokhimiia* 84:1233-1246.
522 Lamichhane DK, Leem JH, Lee JY, Kim HC. 2015. A meta-analysis of exposure to particulate
523 matter and adverse birth outcomes. *Environmental health and toxicology* 30:e2015011.
524 LaRocca J, Binder AM, McElrath TF, Michels KB. 2016. First-trimester urine concentrations of
525 phthalate metabolites and phenols and placenta mirna expression in a cohort of u.S. Women.
526 *Environmental health perspectives* 124:380-387.
527 Lee M, Rahbar MH, Samms-Vaughan M, Bressler J, Bach MA, Hessabi M, et al. 2019. A
528 generalized weighted quantile sum approach for analyzing correlated data in the presence of
529 interactions. *Biometrical journal Biometrische Zeitschrift* 61:934-954.
530 Ligorio M, Izzotti A, Pulliero A, Arrigo P. 2011. Mutagens interfere with microrna maturation by
531 inhibiting dicer. An in silico biology analysis. *Mutation research* 717:116-128.
532 Longo V, Longo A, Di Sano C, Cigna D, Cibella F, Di Felice G, et al. 2019. In vitro exposure to
533 2,2',4,4'-tetrabromodiphenyl ether (pbde-47) impairs innate inflammatory response. *Chemosphere*
534 219:845-854.
535 Longo V, Longo A, Adamo G, Fiannaca A, Picciotto S, La Paglia L, et al. 2021. 2,2',4,4'-
536 tetrabromodiphenyl ether (pbde-47) modulates the intracellular mirna profile, sev biogenesis and
537 their mirna cargo exacerbating the lps-induced pro-inflammatory response in thp-1 macrophages.
538 *Frontiers in immunology* 12:664534.
539 Louro H, Heinala M, Bessems J, Buekers J, Vermeire T, Woutersen M, et al. 2019. Human
540 biomonitoring in health risk assessment in europe: Current practices and recommendations for the
541 future. *International journal of hygiene and environmental health* 222:727-737.
542 Mancuso R, Agostini S, Hernis A, Zanzottera M, Bianchi A, Clerici M. 2019. Circulatory mir-223-
543 3p discriminates between parkinson's and alzheimer's patients. *Scientific reports* 9:9393.
544 Miguel V, Lamas S, Espinosa-Diez C. 2020. Role of non-coding-rnas in response to environmental
545 stressors and consequences on human health. *Redox biology* 37:101580.
546 Montalbano AM, Albano GD, Anzalone G, Moscato M, Gagliardo R, Di Sano C, et al. 2020.
547 Cytotoxic and genotoxic effects of the flame retardants (pbde-47, pbde-99 and pbde-209) in human
548 bronchial epithelial cells. *Chemosphere* 245:125600.

- 549 Mudu P, Terracini B, Martuzzi M. 2014. Human health in areas with industrial contamination.
550 World Health Organization.
- 551 Neudecker V, Haneklaus M, Jensen O, Khailova L, Masterson JC, Tye H, et al. 2017. Myeloid-
552 derived mir-223 regulates intestinal inflammation via repression of the nlrp3 inflammasome. *The*
553 *Journal of experimental medicine* 214:1737-1752.
- 554 Rahman SM, Kippler M, Ahmed S, Palm B, El Arifeen S, Vahter M. 2015. Manganese exposure
555 through drinking water during pregnancy and size at birth: A prospective cohort study.
556 *Reproductive toxicology* 53:68-74.
- 557 Rappaport SM, Barupal DK, Wishart D, Vineis P, Scalbert A. 2014. The blood exposome and its
558 role in discovering causes of disease. *Environmental health perspectives* 122:769-774.
- 559 Rappaport SM. 2016. Genetic factors are not the major causes of chronic diseases. *PloS one*
560 11:e0154387.
- 561 Ross SA, Davis CD. 2014. The emerging role of micrnas and nutrition in modulating health and
562 disease. *Annual review of nutrition* 34:305-336.
- 563 Ruggieri S, Drago G, Colombo P, Alesci A, Augello P, Bisbano A, et al. 2019. Three contaminated
564 sites in southern italy. The neonatal environment and health outcomes cohort: Protocol for a
565 longitudinal birth cohort study. *BMJ open* 9:e029471.
- 566 Ruggieri S, Maltese S, Drago G, Cibella F, Panunzi S. 2021. The neonatal environment and health
567 outcomes (neho) birth cohort study: Behavioral and socioeconomic characteristics and drop-out rate
568 from a longitudinal birth cohort in three industrially contaminated sites in southern italy.
569 *International journal of environmental research and public health* 18.
- 570 Salvagio Manta D, Bonsignore M, Oliveri E, Barra M, Tranchida G, Giaramita L, et al. 2016.
571 Fluxes and the mass balance of mercury in augusta bay (sicily, southern italy). *Estuarine, Coastal*
572 *and Shelf Science* 181: 134-143.
- 573 Sood S, Shekhar S, Santosh W. 2017. Dimorphic placental stress: A repercussion of interaction
574 between endocrine disrupting chemicals (edcs) and fetal sex. *Medical hypotheses* 99:73-75.
- 575 Sprovieri M, Oliveri E, Di Leonardo R, Romano E, Ausili A, Gabellini M, et al. 2011. The key role
576 played by the augusta basin (southern italy) in the mercury contamination of the mediterranean sea.
577 *Journal of environmental monitoring : JEM* 13:1753-1760.
- 578 Stolevik SB, Nygaard UC, Namork E, Haugen M, Meltzer HM, Alexander J, et al. 2013. Prenatal
579 exposure to polychlorinated biphenyls and dioxins from the maternal diet may be associated with
580 immunosuppressive effects that persist into early childhood. *Food and chemical toxicology : an*
581 *international journal published for the British Industrial Biological Research Association* 51:165-
582 172.
- 583 Tanner E, Lee A, Colicino E. 2020. Environmental mixtures and children's health: Identifying
584 appropriate statistical approaches. *Current opinion in pediatrics* 32:315-320.
- 585 Traina A, Ausili A, Bonsignore M, Fattorini D, Gherardi S, Gorbi S, et al. 2021. Organochlorines
586 and polycyclic aromatic hydrocarbons as fingerprint of exposure pathways from marine sediments
587 to biota. *Marine pollution bulletin* 170:112676.
- 588 Wild CP. 2005. Complementing the genome with an "exposome": The outstanding challenge of
589 environmental exposure measurement in molecular epidemiology. *Cancer Epidemiol Biomarkers*
590 *Prev* 14:1847-1850.
- 591 Wu Y, Li Q, Zhang R, Dai X, Chen W, Xing D. 2021. Circulating micrnas: Biomarkers of
592 disease. *Clinica chimica acta; international journal of clinical chemistry* 516:46-54.
- 593 Zhang Q, Liu S, Zhang J, Ma X, Dong M, Sun B, et al. 2021. Roles and regulatory mechanisms of
594 mir-30b in cancer, cardiovascular disease, and metabolic disorders (review). *Experimental and*
595 *therapeutic medicine* 21:44.
- 596 Zona A, Iavarone I, Buzzoni C, Conti S, Santoro M, Fazzo L, et al. 2019. [sentieri: Epidemiological
597 study of residents in national priority contaminated sites. Fifth report]. *Epidemiologia e prevenzione*
598 43:1-208.

Figure 1. Geographical localization of the study area. Left panel shows the geographical localization of the Priolo-Augusta study area. The Right panel shows the localization of the dwellings of the mothers in the area. Mothers residing in National Priority Contaminated Sites are in red, mothers residing in the Local Reference Areas are in blue.

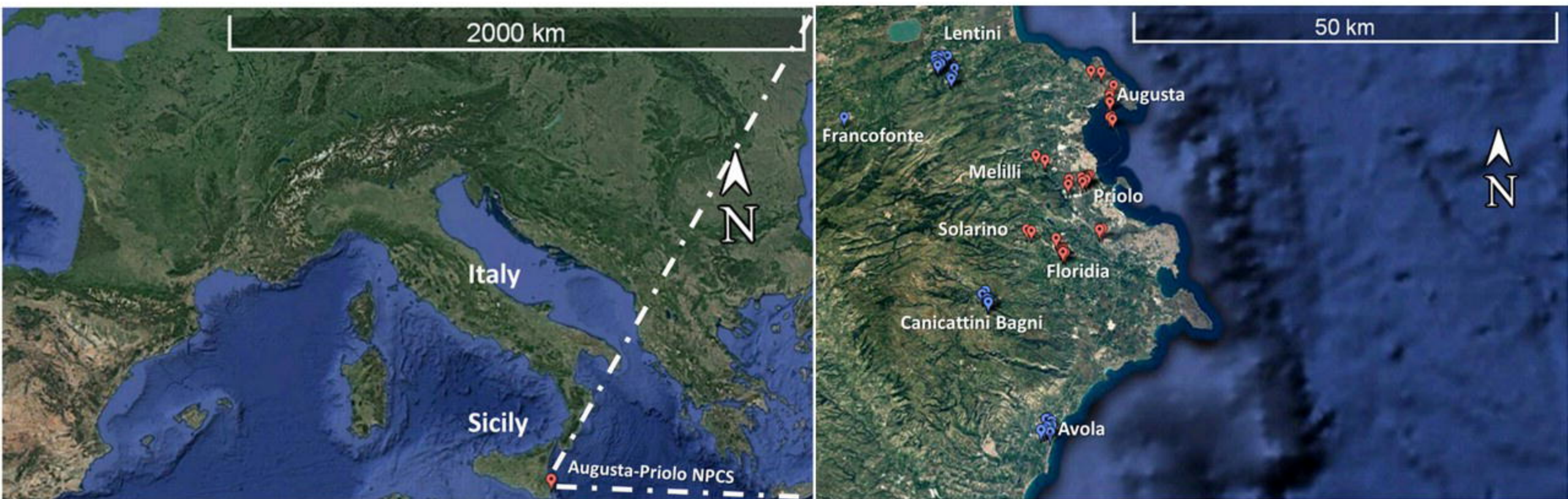


Figure 3. Linear regression models. Panels A-C show linear models for Let-7a, miR-223 and miR-30b, respectively. Each model was adjusted for maternal age and pre-pregnancy BMI.

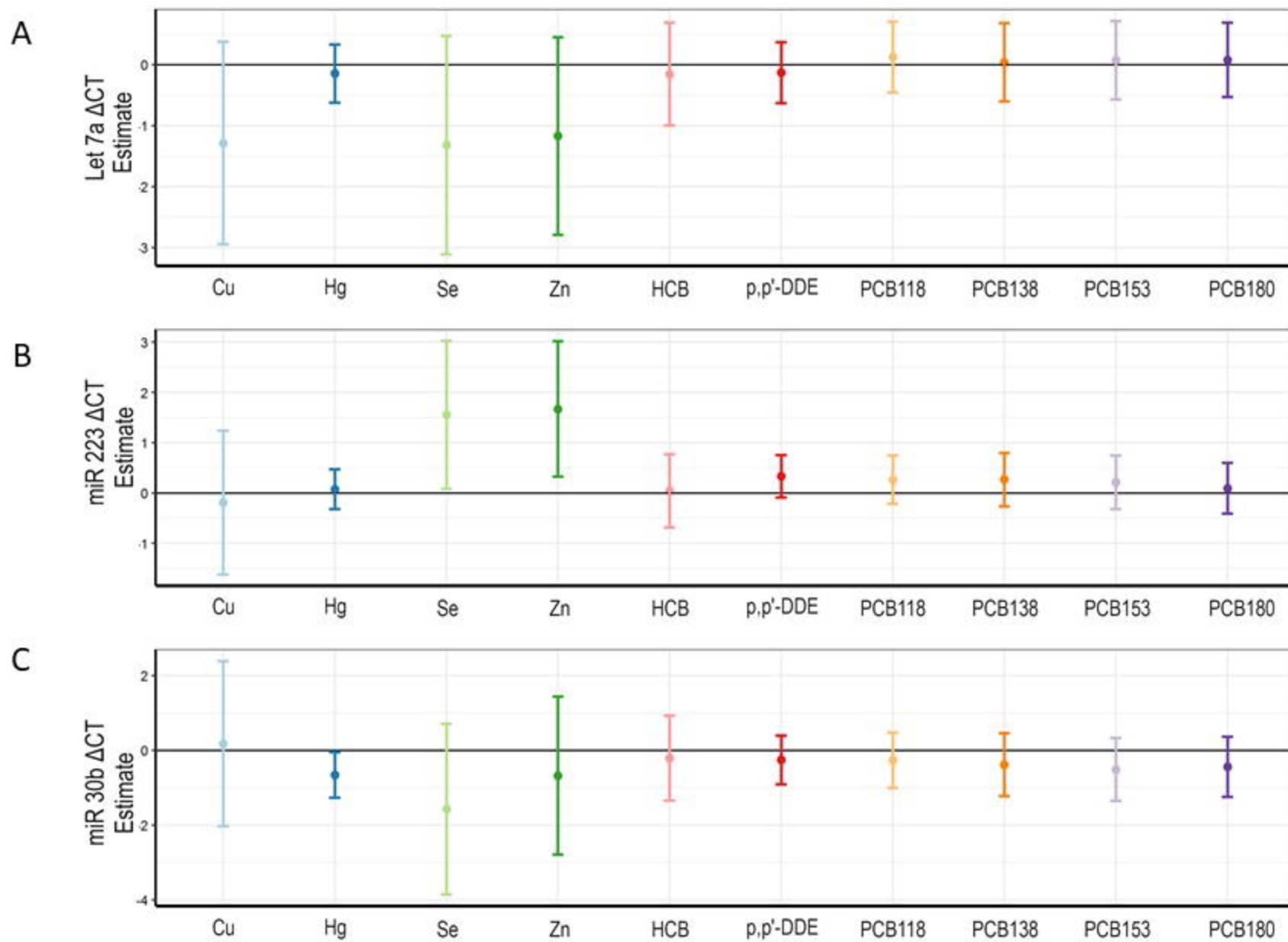


Figure 4. Multiple linear regression models for Let-7a, miR-223 and miR-30b Δ CTs. Panels A-C show linear models for Let-7a, miR-223 and miR-30b, respectively. Each exposure was categorized into tertile, lower tertile was used as reference category. Each model was adjusted for maternal age and pre-pregnancy BMI.

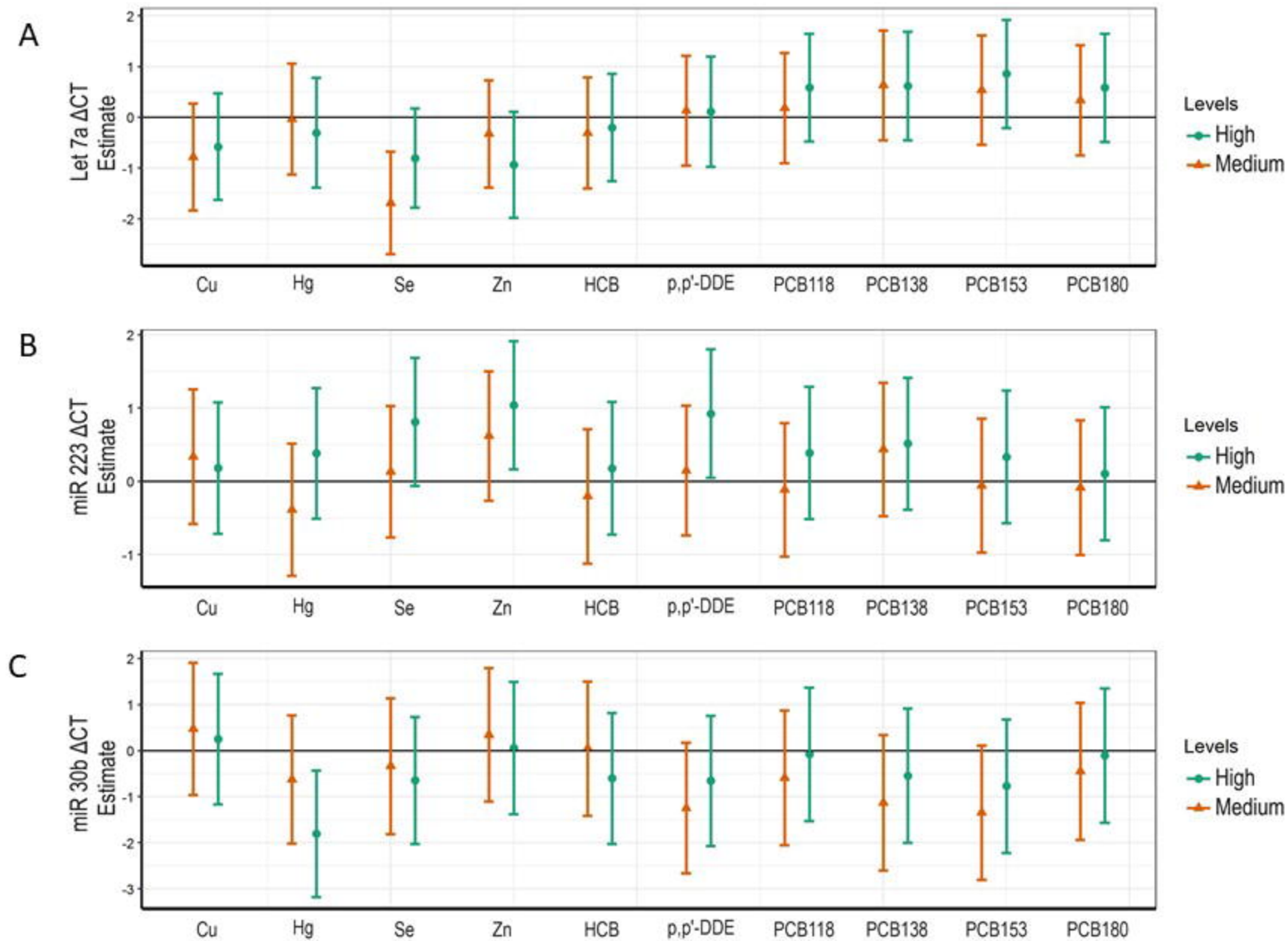


Figure 5. WQS regression analysis. Association between concentrations of biomonitored substances and Let-7a (Panel A), miR-223 (Panel B) and miR-30b (Panel C) Δ CTs based on weighted quantile sum (WQS) regression analysis.



Let-7a Coefficients:

	Estimate	St. Error	t value	P value
[Intercept]	2.564	1.935	1.325	0.190
wqs	-1.003	0.490	-2.046	0.045
M. Age	0.030	0.052	0.576	0.567
BMI	-0.012	0.039	-0.321	0.750

miR-223 Coefficients:

	Estimate	St. Error	t value	P value
[Intercept]	-1.599	1.523	-1.050	0.297
wqs	1.433	0.404	3.545	0.0001
M. Age	-0.004	0.042	-0.105	0.916
BMI	-0.020	0.031	-0.671	0.504

miR-30b Coefficients:

	Estimate	St. Error	t value	P value
[Intercept]	1.802	2.607	0.691	0.492
wqs	-1.352	0.636	-2.126	0.038
M. Age	0.100	0.073	1.364	0.177
BMI	0.024	0.051	0.472	0.638

Table 1. Demographic and gestational characteristics of the study population

	NPCS n=33	LRA n=35	p value*	NEHO n=68
Maternal characteristics				
Age (year, mean [\pm SD])	31.2 [\pm 4.3]	30.9 [\pm 4.4]	0.816	31.0 [\pm 4.3]
BMI (kg/m ² , mean [\pm SD])	23.7 [\pm 5.7]	23.3 [\pm 5.7]	0.902	25.5 [\pm 5.7]
Weight Gain (kg, mean [\pm SD])	11.8 [\pm 4.2]	13.5 [\pm 4.7]	0.219	12.7 [\pm 4.7]
Marital status (N [%])			0.875	
Married	21 [63.6%]	23 [65.7%]		44 [64.7%]
Never Married/Separated	12 [36.4%]	12 [34.3%]		24 [35.3%]
Educational level (N [%])			0.080	
Secondary school or lower qualification	5 [15.2%]	11 [31.4%]		16 [23.5%]
High School	22 [66.7%]	14 [40.0%]		36 [53.0%]
Degree or higher qualification	6 [18.2%]	10 [28.6%]		16 [23.5%]
Length of gestation (weeks, mean [\pm SD])	39.2 [\pm 1.3]	39.1 [\pm 1.2]	0.346	39.1 [\pm 1.2]
Birth type (N [%])				
Cesarean section	14 [42.4%]	11 [31.4%]		25 [36.8%]
Vaginal	19 [57.6%]	24 [68.6%]		43 [63.2%]
Newborn Characteristics				
Gender (N [%])			0.839	
Female	14 [42.4%]	14 [40.0%]		28 [41.2%]
Male	19 [57.6%]	21 [60.0%]		40 [58.8%]

*p-Values comparing NPCSs and LRAs based on Mann-Whitney U test for continuous variables and Chi-Square test for categorical variables.

Table 2. Serum maternal toxicant levels. Values are expressed as median and interquartile range.

	LOQ	% > LOQ	NEHO n=68	NPCS n=33	LRA n=35	p value*
Cu (µg/L, median [IQR])	200 (µg/L)	100%	2139 [1951-2367]	2300 [2064-2517]	2025 [1878-2259]	0.008
Hg (µg/L, median [IQR])	0.40 (µg/L)	73,5%	0.57 [0.20-0.85]	0.64 [0.42-0.85]	0.55 [0.20-0.92]	0.488
Se (µg/L, median [IQR])	20 (µg/L)	100%	79.0 [69.5-90.0]	83.0 [75.8-93.3]	72.0 [65.5-83.5]	0.002
Zn (µg/L, median [IQR])	200 (µg/L)	100%	621.5 [557.5-706.0]	662.0 [618.3-735.8]	564.0 [536.0-666.5]	0.003
HCB (ng/L, median [IQR])	10 (ng/L)	100%	53.4 [42.7-71.2]	61.1 [46.8-71.1]	46.8 [41.1-70.8]	0.179
p,p'-DDE (ng/L, median [IQR])	40 (ng/L)	100%	341.1 [237.6-505.8]	344.9 [244.4-534.9]	338.9 [232.8-426.3]	0.261
PCB118 (ng/L, median [IQR])	5 (ng/L)	98,5%	20.0 [13.9-28.6]	22.2 [15.3-37.0]	19.5 [11.1-27.6]	0.092
PCB138 (ng/L, median [IQR])	5 (ng/L)	100%	57.1 [41.5-89.4]	61.5 [43.7-94.2]	52.2 [37.9-76.4]	0.156
PCB153 (ng/L, median [IQR])	5 (ng/L)	100%	96.1 [68.0-160.2]	100.5 [72.1-178.2]	92.8 [66.0-126.2]	0.149
PCB180 (ng/L, median [IQR])	5 (ng/L)	100%	65.0 [44.0-115.8]	59.0 [42.5-92.8]	59.0 [42.5-92.8]	0.101

*p-Values comparing NPCSs and LRAs based on Mann-Whitney U test;

IQR = Interquartile range;

LOQ = Limit of quantification;

Data below the LOQ were replaced with LOQ/2

Table 3. MicroRNAs fold increase: green and red boxes show increased and decreased levels of expression, respectively

		Let-7a Fold Change	miR-223 Fold Change	miR-30b Fold Change
Cu	Medium	1.7	0.8	0.7
	High	1.5	0.9	0.8
Hg	Medium	1.0	1.3	1.5
	High	1.2	0.8	3.5
Se	Medium	3.2	0.9	1.3
	High	1.7	0.6	1.6
Zn	Medium	1.3	0.7	0.8
	High	1.9	0.5	1.0
HCB	Medium	1.2	1.2	1.0
	High	1.1	0.9	1.5
p,p'-DDE	Medium	0.9	0.9	2.4
	High	0.9	0.5	1.6
PCB118	Medium	0.9	1.1	1.5
	High	0.7	0.8	1.1
PCB138	Medium	0.6	0.7	2.2
	High	0.7	0.7	1.5
PCB153	Medium	0.7	1.0	2.5
	High	0.6	0.8	1.7
PCB180	Medium	0.8	1.1	1.4
	High	0.7	0.9	1.1