

## **The impact of depression diagnosis on diabetes and lifetime hyperglycaemia**

Saskia P Hagenaars<sup>1,2\*</sup>, Alexandra C Gillett<sup>1,2\*</sup>, Francesco Casanova<sup>3</sup>, Katherine G Young<sup>3</sup>,  
Harry Green<sup>3</sup>, Cathryn M Lewis<sup>1,2,4</sup>, Jess Tyrrell<sup>3</sup>

\*contributed equally

### Affiliations

1. Social, Genetic and Developmental Psychiatry Centre, Institute of Psychiatry, Psychology and Neuroscience, King's College London, London, UK
2. NIHR Maudsley Biomedical Research Centre, South London and Maudsley NHS Trust, London, UK
3. Institute of Biomedical and Clinical Science, College of Medicine and Health, University of Exeter, Exeter, UK
4. Department of Medical and Molecular Genetics, Faculty of Life Sciences and Medicine, King's College London.

Corresponding author:

Alexandra C Gillett

Social, Genetic and Developmental Psychiatry Centre,  
Institute of Psychiatry, Psychology and Neuroscience,  
King's College London,  
London, UK

alexandra.a.gillett@kcl.ac.uk

Word count

Manuscript: 3835 words

Abstract: 233 words

Novelty statement

### **What is already known?**

Comorbid T2D and MDD is associated with poorer diabetic control and worse prognosis.

### **What this study has found?**

We demonstrate a strong complex relationship between MDD and diabetic control, influenced by diabetic medication and baseline HbA1c levels. We showed that individuals who develop MDD after their T2D diagnosis have greater variability in HbA1c levels over time.

### **What are the implications of the study?**

This study shows the importance of closer monitoring of HbA1c in individuals with both T2D and MDD, particularly those who develop MDD after diabetes, to improve diabetic control and reduce complications associated comorbid T2D and MDD.

## **Abstract**

### **Aims**

The aim of this study was to evaluate longitudinal associations between the mean and variability of HbA1c levels in individuals with type 2 diabetes (T2D) and major depressive disorder (MDD).

### **Methods**

Individuals with T2D from the UK Biobank with linked primary care records were analysed. An HbA1c measurement within +/- 6-months of T2D diagnosis was taken as baseline, with subsequent HbA1c measurements used as the outcome in generalised least squares regression to evaluate longitudinal associations with a three-level MDD diagnosis variable (MDD controls, pre-T2D MDD cases and post-T2D MDD cases).

### **Results**

Using 7,968 T2D individuals, we show that MDD has utility in explaining mean HbA1c levels ( $p=6.53E-08$ ). This is attributable to MDD diagnosis interacting with baseline T2D medication ( $p=3.36E-04$ ) and baseline HbA1c ( $p=2.66E-05$ ), but not with time- when all else is equal, the temporal trend in expected HbA1c did not differ by MDD diagnosis. However, joint consideration with baseline T2D medication showed that each additional medication prescribed was associated with a +4 mmol/mol (2.5%) increase in expected HbA1c across follow up for post-T2D MDD cases, relative to pre-T2D MDD cases and MDD controls. Furthermore, variability in HbA1c increased across time for post-T2D MDD cases but decreased for MDD controls and pre-T2D MDD cases.

## **Conclusions**

These findings suggest closer monitoring of individuals with both T2D and MDD is essential to improve their diabetic control, particularly for those who develop MDD after T2D diagnosis.

Key words: type 2 diabetes, depression, HbA1c, longitudinal, epidemiology

## Introduction

Major depressive disorder (MDD) and type 2 diabetes (T2D) represent two huge global health burdens. The risk of these conditions are intertwined: a diagnosis of T2D increases MDD risk, and similarly, those diagnosed with MDD have an increased risk of T2D. These bidirectional MDD-T2D associations confer substantial increased risks, with a meta-analysis demonstrating that adults with MDD had a 37% increased risk of developing T2D<sup>1</sup>, and a 15% increased risk of incident MDD in people with T2D at baseline<sup>2</sup>. There is limited evidence about the causal nature of these associations, with some evidence using genetic methods that MDD causes T2D<sup>3</sup>. Further research is required to fully elucidate these mechanisms.

Comorbid T2D and MDD are also associated with poorer prognosis. MDD is associated with elevated risk of diabetic complications<sup>4</sup>. There is also some evidence that comorbid MDD and T2D is associated with higher suicide risk<sup>5</sup>. This presents a major clinical challenge due to both diseases exacerbating each other. The underlying mechanisms between these disorders and outcomes are still poorly understood, but could include lifestyle factors, non-adherence to T2D treatment, use of antidepressant medication or genetic factors<sup>6</sup>. Recent studies have highlighted the potential importance of genetics in the MDD-T2D relationship, with shared genetic loci between MDD and T2D identified via the genome-wide association studies (GWAS) of both traits<sup>7,8</sup>.

Monitoring blood glucose is essential in T2D, with glycated haemoglobin (HbA1c) representing a reliable measure of chronic glycaemia. Higher HbA1c levels correlate well with increased risk of long-term diabetic complications. Standard T2D monitoring in the UK involves HbA1c measured by a general practitioner (GP) every 3-6 months<sup>9</sup>, enabling disease progression monitoring and treatment decisions. Initial interventions to lower HbA1c values after a T2D diagnosis usually include lifestyle changes and dietary advice. However, if HbA1c levels remain high, treatment with metformin, a glucose lowering drug, will be considered, followed by an escalation of treatment intensity with increased dosage or different medication combinations<sup>9</sup>.

Prior studies have shown clear support for the bidirectional association between MDD and HbA1c, but results are limited by the small effect sizes and study design<sup>10</sup>. Most studies are

cross-sectional, or only use a limited number of HbA1c measures, limiting the ability to infer temporality. Determining the impact of MDD on glycaemic control is crucial for ensuring appropriate clinical care is given to people with comorbid MDD and T2D. The UK Biobank (UKB) is a large multicentre study with phenotypic and genetic data collected in 500,000 individuals. The availability of linked primary care data in the UKB provides a unique opportunity to perform extensive longitudinal modelling of HbA1c in people with T2D, with information on MDD diagnoses. We will investigate the impact of MDD on HbA1c levels in people with T2D using extensive follow-up, testing the following hypotheses:

1. Is there any association between MDD and expected HbA1c?
2. Do temporal trends in expected HbA1c differ by MDD status?
3. Do any additional variables influence the relationship between MDD and expected HbA1c?
4. Do temporal trends for within-subject variability of HbA1c differ by MDD status?

Longitudinal modelling will include widely available sociodemographic and clinical factors, together with polygenic risk scores for MDD to assess the impact of genetic factors.

## **Methods**

### **Data**

The UKB is a prospective population study of ~500,000 individuals recruited in mid-life (aged 40-70 years) from across the United Kingdom between 2006 and 2010<sup>11</sup>. Linked primary care records are available for ~230,000 individuals (46%) and include coded clinical events, routinely collected blood test results and drug prescriptions, providing patient information across time<sup>12</sup>. Ethical approval was granted by the NHS North West Research Ethics Committee (REC reference 11/NW/0382). Written informed consent was obtained from all participants. This study was restricted to UKB participants with primary care records, at least two valid HbA1c measurements, a T2D diagnosis and T2D diagnosis date (17,689 individuals, 302,663 HbA1c observations). Figure 1 shows how this sample was generated. Participants included in the longitudinal analysis of HbA1c required a baseline HbA1c measurement, occurring within a +/- 6-month window of T2D diagnosis (13,024 individuals). In the primary analysis of HbA1c and MDD, we excluded MDD cases missing time of MDD diagnosis (7,968 individuals with 115,861 HbA1c observations). In the secondary analysis of HbA1c and MDD PRS, we excluded individuals missing PRS (9,365 individuals with 141,095 HbA1c observations).

### **Type 2 diabetes (T2D)**

T2D was defined as any two of the following: a primary care diagnosis code for T2D, an ICD9/ICD10 diagnosis code for T2D, any HbA1c measurement  $\geq 48$  mmol/mol (6.5%), any prescription for glucose lowering medication, or a self-reported diagnosis for T2D, with diagnosis date as the earliest occurrence. Diagnostic codes for primary care and hospital episodes statistics are given in Supplementary Tables (ST) 1 and 2. Details on exclusion criteria are shown in Supplementary Methods (SM) 1. Supplementary Figure 1 shows the contributions of each input phenotype for T2D, and their overlap. To validate this definition of T2D diagnosis, we tested whether polygenic risk scores (PRS) for T2D based on Scott et al (2017)<sup>18</sup> predicted our T2D diagnosis (see SM 7).

#### *Diabetic medication*

We created a medication variable to define the type of glucose lowering medication a patient was using at the time of each HbA1c measurement (up to three months prior to the HbA1c measurement). This variable, included as a continuous covariate, ranged from 0-3 to indicate the intensity of treatment, with 0 defined as 'no medication', 1 as 'metformin or a single

medication', 2 as 'two medications', and 3 as either '3 or more medications' or 'insulin'. SM 2 and ST 3 provides further detail on medication extraction.

### **Outcome**

The outcome measure was HbA1c (mmol/mol). We considered all UKB participants with T2D, primary care records and at least two valid HbA1c measurements (see SM 3, with HbA1c codes provided in ST 4). Longitudinal modelling for HbA1c required individuals to have a baseline HbA1c measurement, occurring within a +/- 6-month window of T2D diagnosis. This baseline measurement was included as a covariate, with subsequent HbA1c measures used as outcome variables. Time was defined as time since baseline (approximate T2D diagnosis date). All HbA1c measurements were standardised using the baseline sample mean and SD.

### **MDD**

A MDD factor with three-levels, incorporating timing of onset in relation to T2D diagnosis, was the main variable of interest in the primary analysis. MDD was defined based on Fabbri et al (2021)<sup>15</sup> (SM 4). Within the analysis sample, there were 1,729 MDD cases and 7,781 MDD controls. MDD status and diagnosis date were then used to create the following three groups:

1. MDD Controls (individuals with T2D without MDD)
2. A pre-T2D MDD group (individuals with T2D and MDD prior to their T2D diagnosis)
3. A post-T2D MDD group (individuals with T2D and MDD after their T2D diagnosis).

Within the secondary analysis, MDD PRS was the main variable of interest. MDD PRS were created from MDD GWAS summary statistics using PRS-CS<sup>16</sup>, as described by Pain et al (2021)<sup>17</sup>.

### **Covariates**

In both the primary and secondary analyses, additional covariates include: time since baseline for each HbA1c measure (time), assessment centre, sex, year of birth, age at baseline, year of baseline measurement, baseline HbA1c, baseline medication and change in medication from baseline, with baseline referring to approximate T2D diagnosis date. To allow for a non-linear relationship with HbA1c, time was modelled using a restricted cubic spline with four knots (SM 9). ST 5 details all included covariates.

## **Statistical analysis**

### *Primary analysis*

Longitudinal modelling of HbA1c was performed using generalised least squares (GLS) regression, a type of growth curve model which extends the linear model to allow within-subject dependence<sup>20</sup>. GLS regression jointly estimates a mean model and a covariance model, which allowed us to test our four primary hypotheses (outlined below). MDD diagnosis group was fitted in the mean model as a main effect (2 df), and in two-way interactions with five covariates: sex (2 df), baseline HbA1c (2 df), time (6 df), baseline medication (2 df) and medication change from baseline (2 df). The MDD control group (T2D with no MDD) was used as the reference. To account for correlation between repeated HbA1c measures in the same individual we used a continuous-time autoregressive 1 error structure. Within-subject variance at a given observation was modelled as a function of time, which could vary by MDD diagnosis group. Full details of the GLS modelling are in SM 8. Hypotheses 1-3 utilised Wald chi-square tests to assess the evidence that various MDD-related mean model parameters in the unrestricted/full model can be constrained to zero. Hypothesis 4 used likelihood ratio tests to compare the goodness of fit of nested GLS covariance models. Analysis was performed using R version 4.4.1, with the rms package<sup>21</sup> used for GLS modelling and ggplot2<sup>22</sup> for graphics. In total, across all four primary hypotheses, 25 tests were performed, therefore a Bonferroni-corrected significance threshold of  $0.05/25=0.002$  was used.

*Hypothesis 1: Any association between MDD and expected HbA1c?* This was tested using the joint null of all MDD diagnosis group-related effect sizes (main and interactions) in the mean model being equal to zero (16 df).

*Hypothesis 2: Do temporal trends in expected HbA1c differ by MDD group?* This was tested using the joint null of no interaction between time and the MDD diagnosis groups (6 df).

*Hypothesis 3: Do any additional variables influence the relationship between MDD and expected HbA1c?* In addition to time, the mean model contained interactions between MDD diagnosis group and sex, baseline HbA1c, baseline medication and change in medication from baseline. Each of these four interactions were tested in turn using the joint null of no interaction (four tests, each with 2 df).

*Additional mean model hypothesis tests.* The above are all joint hypothesis tests with effect size estimates for the pre-existing and the post-T2D MDD groups being tested together. To assess if associations are MDD diagnosis group-specific we performed univariate testing of



no effect for each MDD diagnosis group-related model parameter in turn (main effects and interactions) via 16 two-sided t-tests.

*Hypothesis 4: Do temporal trends in within-subject variability of HbA1c differ by MDD group?* The covariance model allows within-subject variability in HbA1c to change over time. This trend can differ by MDD diagnosis group, with separate covariance model parameters being estimated for each group (MDD controls, the pre-T2D MDD group and post-T2D MDD group). To assess whether within-subject variability across time differed by MDD diagnosis group we tested three hypotheses- that there was no difference in the trend in variability across time between MDD diagnosis groups (all parameters equal versus otherwise), that the MDD post-T2D group had a different trend compared to the other two groups pooled, and similarly for the MDD pre-T2D group. Full details are provided in SM 8.1.3.

A sensitivity analysis, treating MDD diagnosis as a time-varying covariate, was performed to ensure that results were not driven by the three-level MDD definition used. We defined prevalent MDD as present/absent at each HbA1c observation, so that the post-T2D MDD group were classified as MDD cases from their MDD diagnosis date, and not from T2D diagnosis date. Results support the primary analysis and are therefore not discussed further. Full details are given in Supplementary Analyses note.

#### *Secondary analysis*

GLS regression was also used to assess associations between MDD PRS and HbA1c using the available longitudinal sample. The analysis followed parallel to the structure of the four hypotheses tested in the primary analysis but using the continuous MDD PRS instead of MDD diagnosis groups. Further details are provided in SM 8.2.

## Results

The UKB sample consisted of 17,689 individuals with T2D and at least two HbA1c measurements (39% female, mean age of 59 years (SD: 7 years) at first observation). The average age at T2D diagnosis was 57 years (SD: 10 years). The sample was split into three MDD diagnosis groups (N control: 6,523, N pre-T2D MDD: 1,144, N post-T2D MDD: 301). The post-T2D MDD group had on average more HbA1c measurements, higher average HbA1c and an earlier age at T2D diagnosis (Table 1). PRS for T2D predicted T2D diagnosis based on the previously described definition ( $p < 5.95E-188$ ,  $R^2 \sim 2\%$ , ST 6).

### *Primary analysis*

#### **MDD diagnosis is associated with HbA1c (hypothesis 1)**

GLS mean model results show strong evidence of association between MDD diagnosis group and expected HbA1c, demonstrated by significant evidence against the composite null of no MDD diagnosis group effect ( $p = 6.53E-08$ ; Table 2).

#### **Temporal trends in expected HbA1c do not differ by MDD diagnosis (hypothesis 2)**

When all else is equal, the trend in expected HbA1c over time does not differ by MDD diagnosis group, demonstrated by no evidence against the null that the model parameters for the time-by-MDD diagnosis group interaction equal zero ( $p = 7.43E-01$ ; Table 2). Expected HbA1c had a non-linear relationship with time ( $p < 1E-266$ ), including significant interactions between time and baseline HbA1c ( $p < 1E-266$ ), baseline medication ( $p = 3.49E-07$ ) and medication change since baseline ( $p < 1E-266$ ). See ST7 and Supplementary Figures 2-4 for details.

#### **The impact of MDD diagnosis on expected HbA1c is driven by interactions with baseline medication and baseline HbA1c (hypothesis 3)**

The interaction between MDD diagnosis group and baseline medication is useful in explaining expected HbA1c levels ( $p = 3.36E-04$ , Table 2). This result is driven by the post-T2D MDD group, which had a significant increase in expected HbA1c relative to the control MDD group (effect size: 0.22, 95% CI: [0.10, 0.34],  $p = 3.19E-04$ ). In contrast, the pre-T2D MDD group did not differ from the controls (effect size: -0.06, 95% CI: [-0.14, 0.02],  $p = 1.57E-01$ ). Results suggest a 0.22 increase in expected standardised HbA1c from each

additional medication at baseline compared to the controls and pre-T2D MDD cases. This is equivalent to a 4 mmol/mol (2.5%) increase in unstandardised HbA1c (Figure 2).

A significant interaction between MDD diagnosis group and baseline HbA1c was also observed in the mean model for HbA1c ( $p=2.66E-05$ , Table 2). Statistical significance here is attributable to the pre-T2D MDD group ( $p=3.46E-05$ ), with no difference observed between the post-T2D MDD group and MDD controls ( $p=2.14E-02$ ). However, the effect size estimates are similar for the two MDD groups (0.052, 95% CI: [0.03-0.08] for the pre-T2D MDD group; 0.048, 95% CI: [0.01-0.09] for the post-T2D MDD group), implying that the non-significant post-T2D MDD result may be driven by this groups lower sample size. The model suggests that a 1 unit increase in standardised baseline HbA1c is associated with a 0.88 mmol/mol (2.2%) increase in expected HbA1c for pre-T2D MDD cases compared to controls, and a 0.81 mmol/mol (2.2%) increase for post-T2D MDD cases.

#### **Residual variability in HbA1c increased across time for post-T2D MDD cases**

##### **(Hypothesis 4)**

There was strong evidence that the residual variability in HbA1c differed by MDD group ( $p=8.33E-185$ ). Results show that variability increased across time for post-T2D MDD group (effect size 0.028, 95% CI [0.025,0.031]). In contrast, no differences between the pre-T2D MDD cases and T2D MDD controls were observed (ST 8A-B), with variability estimated to decrease over time for these patients (effect size  $-0.007$ , 95% CI [-0.008, -0.006]). These covariance model results are presented in Figure 3.

##### *Secondary analysis*

In the secondary analyses, parallel modelling for hypotheses 1-4 were performed using MDD PRS instead of the three MDD groups. The sample size available for this analysis was 9,395, and a Bonferroni-corrected p-value threshold of  $0.05/11=0.0045$  was utilised to correct for multiple testing. There was no evidence for any association between the MDD PRS and expected HbA1c ( $p=6.06E-02$ , hypothesis 1) or of a temporal association with expected HbA1c via an interaction between MDD PRS and time ( $p=1.57E-01$ , hypothesis 2). No significant interactions were observed between MDD PRS and additional covariates in the mean model (hypothesis 3; Table 3 and ST 9). The analysis of a temporal association between the MDD PRS and residual variability in HbA1c (hypothesis 4) showed evidence

that variability in HbA1c is a function of MDD PRS in addition to time ( $p=6.30E-06$ ). Residual variability within an individual is expected to decrease over time, and this decrease is estimated to be faster for individuals with higher MDD PRS values (see ST 10 and Supplementary Figure 5).

## **Discussion**

To test the hypothesis that people with both T2D and MDD have poorer diabetic control, and therefore a higher likelihood of further complications, this study examined whether T2D patients with MDD have higher, and more variable, HbA1c values over time compared to T2D MDD controls. Based on our longitudinal modelling, we show that there is a strong, complex relationship between MDD and expected HbA1c in T2D patients, driven primarily by interactions between MDD and both the type of diabetic medication at baseline and baseline HbA1c. Given the mean model, the within-subject variability in HbA1c decreases over time for MDD controls and pre-T2D MDD cases, whilst the variability in post-T2D MDD cases increases over time.

In this study we have fitted complex longitudinal models to model the role of MDD in glycaemic control. We demonstrate that considering the timing of MDD onset relative to T2D is crucial. Our models suggest greater variability in HbA1c measures in individuals diagnosed with MDD post T2D onset. Higher HbA1c variability is associated with higher likelihood of adverse outcomes, including microvascular disease<sup>23</sup>. These findings therefore have important clinical implications and need to be further investigated to ensure public health and clinical advice for patients is tailored appropriately. Future work will focus on using a continuous measure capturing the time between the MDD and T2D onset to enable a more thorough understanding of its role in glycaemic control. This will provide more nuanced messaging for clinicians to determine if all patients diagnosed with MDD post T2D onset need closer monitoring or whether there is a more specific time window which is crucial for glycaemic control.

Our findings suggest that for those diagnosed with MDD post T2D who are on more diabetic medication at baseline, their HbA1c increases, compared to pre-T2D diagnosis of MDD or controls (Figure 2). This suggests that individuals with less well controlled T2D (i.e. taking more medications) who are subsequently diagnosed with MDD need more careful monitoring

of their blood glucose and management strategies to help alleviate any adverse consequences of the MDD diagnosis. Further we demonstrate that a prior diagnosis of MDD and higher baseline HbA1c results in higher expected HbA1c values compared to T2D patients without MDD. This may suggest that individuals with pre-existing MDD and poorer glycaemic control at baseline (demonstrated by higher HbA1c) will have higher HbA1c values over time compared to non-depressed T2D patients with equally poor glycaemic control. These individuals would therefore benefit from closer monitoring for T2D onset and/or potential interventions and education to lower their risk of developing T2D.

The relationship between MDD and T2D is highly complex, especially when the temporality is considered, with prevalent MDD episodes hypothesised to have a greater effect on glycaemic control. These results confirm this by showing greater within-subject variability in the post-T2D MDD group. While we cannot make any definitive claims about whether these individuals were in a prevalent depressive episode during the HbA1c measurement, they did visit their GP after their T2D diagnosis and had a MDD code recorded, indicating some level of elevated depressive symptoms. There are multiple pathways that could (partly) explain this association, in particular behavioural pathways. Several studies have shown that patients with both MDD and T2D have worse T2D self-management, are less able to keep the medical appointments, are physically less active and unable to adhere to dietary requirements, possibly leading to hyperglycaemia<sup>24-26</sup>. Our study goes beyond previous studies to highlight the importance of the timing of diagnoses, highlighting the possible need for targeted interventions based on clinical history. Our findings suggests that patients with poorly controlled/highly medicated T2D need closer monitoring for the onset of MDD, which could exacerbate glycaemic control further and increase the likelihood of adverse downstream outcomes.

The lack of association between the MDD PRS and diabetic control could be due to several reasons. While it is possible there truly is a limited genetic effect, which would support a more behavioural pathway between MDD and diabetic control, it is more likely due to a lack of power to detect an effect in this relatively small sample. One should therefore interpret these results with caution and perform replication in future studies with larger sample sizes prior to drawing any conclusions.

There are several limitations with this study design. Firstly, primary care data, such as used in this study, are collected as and when patients visit their GP, which could lead to an overrepresentation of less healthy individuals. However, this study focusses on individuals diagnosed with T2D who are regularly seen by their GP and will therefore have similar amounts and types of data recorded.

A further limitation relates to the validity of the age at MDD onset variable. Here, this variable is based on the date of the first record with a MDD diagnostic code. The average MDD onset is around 30 years, therefore the lack of records before 1990 means that for older individuals the validity of their MDD onset cannot be ensured. This study should therefore be replicated in a different sample, such as the Clinical Practice Research Datalink, which has GP records going back to 1987 and does not have a specific age range<sup>27</sup>, although it lacks genetic data which means any genetic analysis could not be replicated.

Our approach here did not enable causal inference, but future work should use genetic approaches to tease apart the causal role of MDD on T2D and vice versa in more detail. For example, testing if MDD causes a greater variability in HbA1c over time in individuals with T2D.

HbA1c is not only influenced by one's history of MDD or being a prevalent MDD case, but one's current MDD status as well. While the current study did not focus on current MDD status per se, this work could be used in future to examine the impact of an active MDD episode on variability in HbA1c. Previous research has shown that antidepressant medication can lead to weight gain<sup>28</sup>, which can in turn negatively affect HbA1c levels<sup>29</sup>. It is therefore highly relevant to also include antidepressant medication in any follow up analysis, to test whether this could lead to increased variability in HbA1c levels.

To conclude, in this study we utilised primary care records in the UKB to look at HbA1c levels over time to test the longitudinal association between MDD and T2D. We found a non-linear trend in HbA1c over time and showed interactions between baseline medication and MDD as well as baseline HbA1c and MDD. People with MDD after T2D onset had greater variability in HbA1c over time. Our findings not only suggest that closer monitoring of individuals with comorbid MDD and T2D is essential, as they have poorer glycaemic control than non-depressed individuals, but also highlight the need for considering the relative timing

of T2D and MDD onset. Regular monitoring and education of individuals with a) T2D for MDD onset and b) MDD for T2D onset may help to reduce comorbid T2D and MDD. Future work needs to develop strategies to improve diabetic control in individuals with MDD, possible via behavioural changes to diet and lifestyle, thus improving their quality of life.

## **Funding**

This paper represents independent research funded by the National Institute for Health Research (NIHR) Maudsley Biomedical Research Centre at South London and Maudsley NHS Foundation Trust and King's College London. The views expressed are those of the author(s) and not necessarily those of the NHS, the NIHR, or the Department of Health and Social Care. The authors acknowledge use of the research computing facility at Kings College London, Rosalind (<https://rosalind.kcl.ac.uk>), which is delivered in partnership with the NIHR Biomedical Research Centre at South London & Maudsley and Guys & St. Thomas NHS Foundation Trusts, and part-funded by capital equipment grants from the Maudsley Charity (Grant Ref. 980) and Guys & St. Thomas Charity (TR130505). SPH was supported by the Medical Research Council (MR/S0151132). JT and FC are supported by an Academy of Medical Sciences (AMS) Springboard award, which is supported by the AMS, the Wellcome Trust, GCRF, the Government Department of Business, Energy and Industrial Strategy, the British Heart Foundation and Diabetes UK [SBF004\1079]. KGY is supported by Research England's Expanding Excellence in England (E3) fund. HG is funded by an E3 Independent Research Fellowship.

## **Acknowledgements**

The authors would like to thank Dr Oliver Pain at King's College London for providing the PRS for MDD. This research has been conducted using the UKB Resource under Application Number 18177. We are grateful to all UKB staff and volunteers.

## **Competing interests**

No potential or existing conflicts of interest relevant to this article were reported.



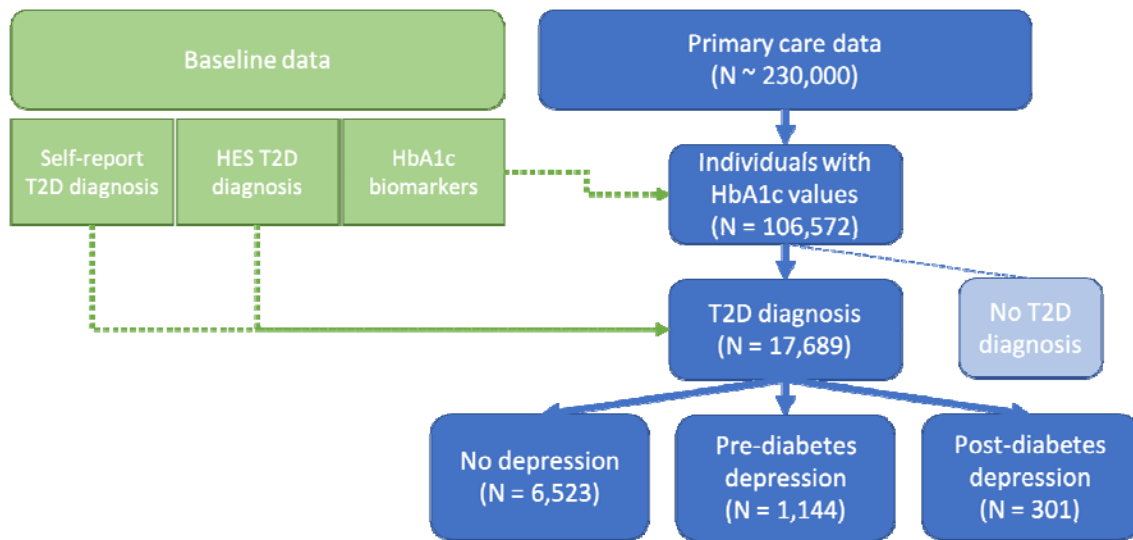
## References

1. Knol MJ, Twisk JWR, Beekman ATF, Heine RJ, Snoek FJ, Pouwer F. Depression as a risk factor for the onset of type 2 diabetes mellitus. A meta-analysis. *Diabetologia*. 2006;49(5):837. doi:10.1007/s00125-006-0159-x
2. Mezuk B, Eaton WW, Albrecht S, Golden SH. Depression and Type 2 Diabetes Over the Lifespan. *Diabetes Care*. 2008;31(12):2383. doi:10.2337/dc08-0985
3. Tang B, Yuan S, Xiong Y, He Q, Larsson SC. Major depressive disorder and cardiometabolic diseases: a bidirectional Mendelian randomisation study. *Diabetologia*. 2020;63(7):1305-1311. doi:10.1007/s00125-020-05131-6
4. Nouwen A, Adriaanse MC, van Dam K, et al. Longitudinal associations between depression and diabetes complications: A systematic review and meta-analysis. *Diabet Med*. 2019;36(12):1562-1572.
5. Fugger G, Dold M, Bartova L, et al. Major Depression and Comorbid Diabetes - Findings from the European Group for the Study of Resistant Depression. *Prog Neuropsychopharmacol Biol Psychiatry*. 2019;94:109638. doi:10.1016/j.pnpbp.2019.109638
6. Holt RIG, de Groot M, Golden SH. Diabetes and Depression. *Curr Diab Rep*. 2014;14(6):491. doi:10.1007/s11892-014-0491-3
7. Kan C, Pedersen NL, Christensen K, et al. Genetic overlap between type 2 diabetes and depression in Swedish and Danish twin registries. *Mol Psychiatry*. 2016;21(7):903-909. doi:10.1038/mp.2016.28
8. Hageaars SP, Coleman JRI, Choi SW, et al. Genetic comorbidity between major depression and cardio-metabolic traits, stratified by age at onset of major depression. *Am J Med Genet B Neuropsychiatr Genet*. 2020;183(6):309-330. doi:10.1002/ajmg.b.32807
9. McGuire H, Longson D, Adler A, Farmer A, Lewin I. Management of type 2 diabetes in adults: summary of updated NICE guidance. *BMJ*. 2016;353:i1575. doi:10.1136/bmj.i1575
10. Beran M, Muzambi R, Geraets A, et al. The bidirectional longitudinal association between depressive symptoms and HbA1c: A systematic review and meta-analysis. *Diabet Med*. Published online 2021:e14671.
11. Sudlow C, Gallacher J, Allen N, et al. UK Biobank: An Open Access Resource for Identifying the Causes of a Wide Range of Complex Diseases of Middle and Old Age. *PLOS Med*. 2015;12(3):e1001779. doi:10.1371/journal.pmed.1001779
12. UK Biobank. Primary Care Linked Data. Published online 2019. [https://biobank.ndph.ox.ac.uk/showcase/showcase/docs/primary\\_care\\_data.pdf](https://biobank.ndph.ox.ac.uk/showcase/showcase/docs/primary_care_data.pdf)
13. NGSP. IFCC Standardization of HbA1c. <http://www.ngsp.org/ifccngsp.asp>
14. Young KG, McDonald TJ, Shields BM. HbA1c measurements from UK Biobank are different to those in linked primary care records: implications for combining biochemistry

data from research studies and routine clinical care. *medRxiv*. Published online January 1, 2021:2021.11.20.21266511. doi:10.1101/2021.11.20.21266511

15. Fabbri C, Hageaars SP, John C, et al. Genetic and clinical characteristics of treatment-resistant depression using primary care records in two UK cohorts. *Mol Psychiatry*. 2021;26(7):3363-3373. doi:10.1038/s41380-021-01062-9
16. Ge T, Chen CY, Ni Y, Feng YCA, Smoller JW. Polygenic prediction via Bayesian regression and continuous shrinkage priors. *Nat Commun*. 2019;10(1):1776. doi:10.1038/s41467-019-09718-5
17. Pain O, Glanville KP, Hageaars SP, et al. Evaluation of polygenic prediction methodology within a reference-standardized framework. *PLOS Genet*. 2021;17(5):e1009021. doi:10.1371/journal.pgen.1009021
18. Scott RA, Scott LJ, Mägi R, et al. An Expanded Genome-Wide Association Study of Type 2 Diabetes in Europeans. *Diabetes*. 2017;66(11):2888. doi:10.2337/db16-1253
19. Choi SW, Mak TSH, O'Reilly PF. Tutorial: a guide to performing polygenic risk score analyses. *Nat Protoc*. 2020;15(9):2759-2772. doi:10.1038/s41596-020-0353-1
20. Harrell FE. *Regression Modeling Strategies: With Applications to Linear Models, Logistic Regression, and Survival Analysis*. Vol 608. Springer; 2001.
21. Harrell FE. Package "rms." <https://cran.r-project.org/web/packages/rms/rms.pdf>
22. Wickham H. *Ggplot 2 Elegant Graphics for Data Analysis*. Second. Springer
23. Škrha J, Šoupal J, Škrha J, Prázný M. Glucose variability, HbA1c and microvascular complications. *Rev Endocr Metab Disord*. 2016;17(1):103-110. doi:10.1007/s11154-016-9347-2
24. Schmitt A, Reimer A, Hermanns N, et al. Depression is linked to hyperglycaemia via suboptimal diabetes self-management: A cross-sectional mediation analysis. *J Psychosom Res*. 2017;94:17-23. doi:10.1016/j.jpsychores.2016.12.015
25. Lustman PJ, Clouse RE. Depression in diabetic patients: The relationship between mood and glycemic control. *J Diabetes Complications*. 2005;19(2):113-122. doi:10.1016/j.jdiacomp.2004.01.002
26. Gonzalez JS, Peyrot M, McCarl LA, et al. Depression and Diabetes Treatment Nonadherence: A Meta-Analysis. *Diabetes Care*. 2008;31(12):2398. doi:10.2337/dc08-1341
27. Herrett E, Gallagher AM, Bhaskaran K, et al. Data Resource Profile: Clinical Practice Research Datalink (CPRD). *Int J Epidemiol*. 2015;44(3):827-836. doi:10.1093/ije/dyv098
28. Gafoor R, Booth HP, Gulliford MC. Antidepressant utilisation and incidence of weight gain during 10 years' follow-up: population based cohort study. *BMJ*. 2018;361. doi:10.1136/bmj.k1951

29. Gummesson A, Nyman E, Knutsson M, Karpefors M. Effect of weight reduction on glycated haemoglobin in weight loss trials in patients with type 2 diabetes. *Diabetes Obes Metab.* 2017;19(9):1295-1305. doi:10.1111/dom.12971



**Figure 1.** Flow diagram of participant selection.

**Table 1. Descriptive statistics, stratified by diagnosis of depression**

	Full sample	Analysis sample	No depression	Pre-diabetes depression	Post-diabetes depression
N	17,689	7968	6523	1144	301
Mean age at first observation <sup>a</sup> (years) (SD)	57.22 (7.78)	60.56 (7.81)	60.87 (7.82)	59.85 (7.38)	55.64 (7.47)
% female	39%	36%	32%	56%	47%
Mean number of HbA1c measurements (SD)	22 (16)	13 (10)	13 (10)	13 (10)	21 (11)
Mean HbA1c value (mmol/mol) (SD)	55.17 (10.62)	54.08 (10.13)	53.98 (10.03)	53.49 (10.04)	56.83 (11.08)
Mean time difference between measurements (weeks)	41 (48)	29 (16)	29 (17)	27 (14)	27 (9)
Mean age at T2D diagnosis (years) (SD)	57.36 (9.66)	59.68 (7.77)	59.99 (7.79)	59.14 (7.33)	54.89 (7.45)
Mean HbA1c at T2D diagnosis (mmol/mol) (SD)	58.35 (18.24)	55.60 (16.71)	55.75 (16.85)	54.08 (15.15)	55.92 (16.87)
Mean follow-up time since baseline (years) (SD) <sup>b,c</sup>	9.66 (7.46) <sup>d</sup>	6.93 (4.23)	6.91 (4.22)	6.19 (4.00)	10.10 (3.83)

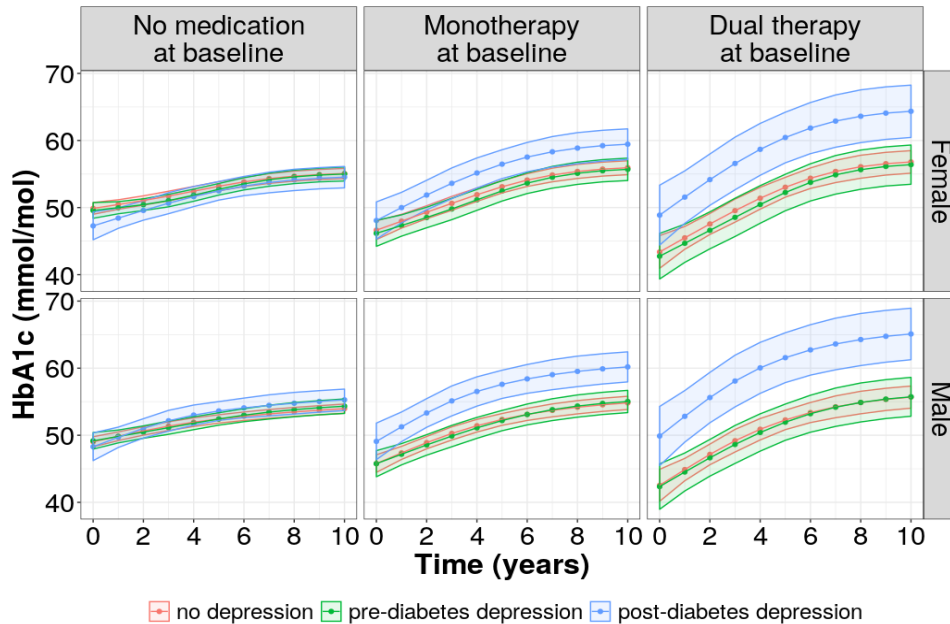
a: First observation relating to the first HbA1c measure of an individual in the dataset. b: baseline refers to approximate time of T2D diagnosis. c: for reliability of modelling (due to data availability) plots included in this study only include the first 10 years of follow-up. d: the mean follow-up time is based on 17,335 individuals, this reduction occurs after removing observations with a minimum follow-up  $\geq 0$  (at or after T2D diagnosis), and those with  $< 2$  observations.

**Table 2. Depression diagnosis group parameter estimates and hypothesis tests for the GLS mean model of HbA1c. Depression controls are the reference group.**

Term <sup>a</sup>	Estimate	(95% CI)	p-value <sup>b</sup>	Joint p-value <sup>c</sup>
<b>Main effect</b>				
Pre-existing depression	0.00	(-0.07, 0.06)	9.38E-01	
Post-diabetes depression	-0.10	(-0.22, -0.01)	8.48E-02	
<b>Sex interaction</b>				
Pre-existing depression	0.04	(-0.01, 0.09)	9.24E-02	5.45E-02

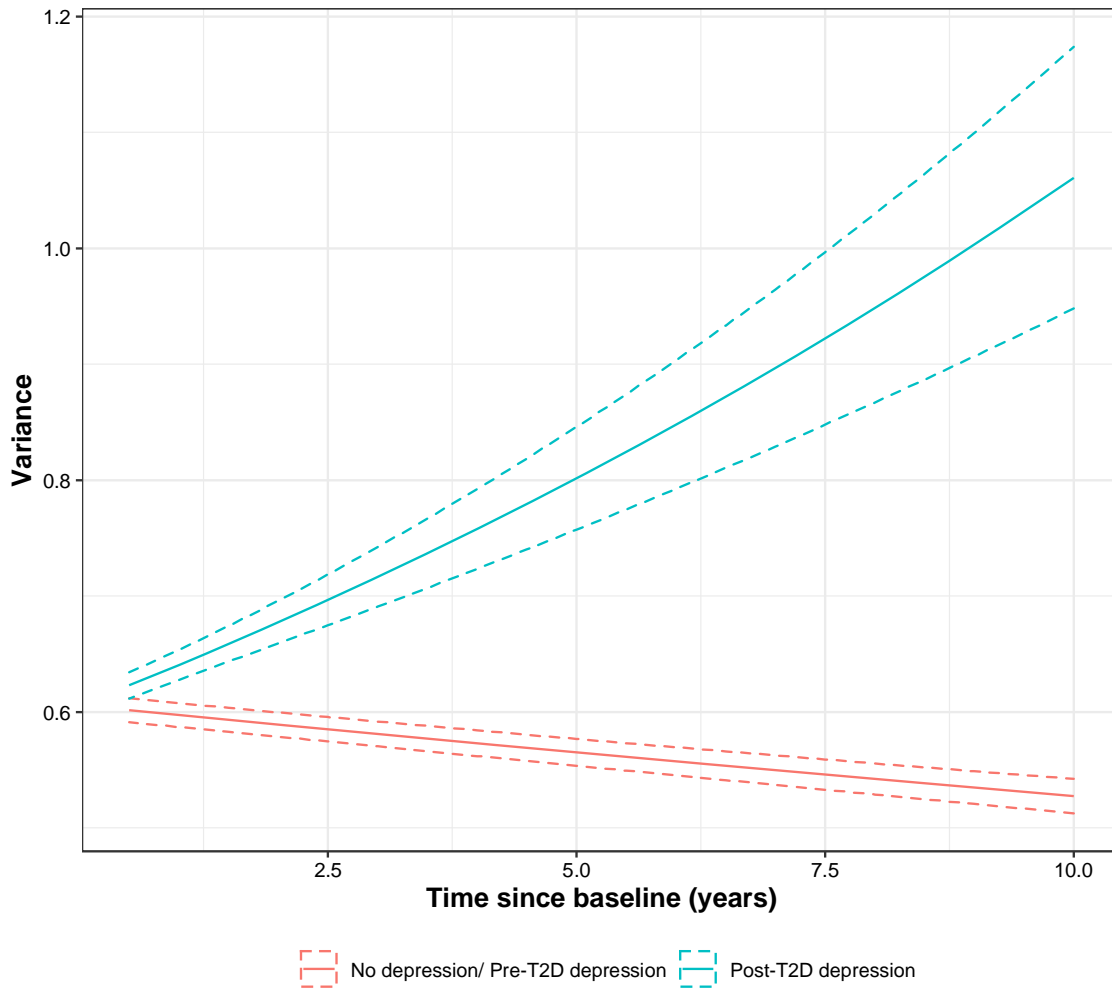
Post-diabetes depression	0.08	( 0.00, 0.17)	6.19E-02	
<b>Time interactions</b>				7.43E-01
<b>Time function 1 interaction</b>				
Pre-existing depression	-0.01	(-0.05, 0.02)	4.31E-01	
Post-diabetes depression	0.03	(-0.03, 0.09)	3.08E-01	
<b>Time function 2 interaction</b>				
Pre-existing depression	0.08	(-0.10, 0.26)	4.00E-01	
Post-diabetes depression	-0.08	(-0.41, 0.24)	6.05E-01	
<b>Time function 3 interaction</b>				
Pre-existing depression	-0.16	(-0.55, 0.23)	4.21E-01	
Post-diabetes depression	0.14	(-0.56, 0.84)	6.98E-01	
<b>Baseline HbA1c interaction</b>				<b>2.66E-05</b>
Pre-existing depression	0.05	( 0.03, 0.08)	<b>3.46E-05</b>	
Post-diabetes depression	0.05	(0.01, 0.09)	2.14E-02	
<b>Medication at baseline interaction</b>				<b>3.36E-04</b>
Pre-existing depression	-0.06	(-0.14, 0.02)	1.57E-01	
Post-diabetes depression	0.22	( 0.10, 0.34)	<b>3.19E-04</b>	
<b>Medication change from baseline interaction</b>				4.79E-02
Pre-existing depression	0.01	(0.00, 0.02)	2.84E-01	
Post-diabetes depression	0.01	(0.00, 0.02)	1.76E-01	
<b>Any depression diagnosis group effect (main effects and interactions)</b>				<b>6.53E-08</b>

**a:** GLS model adjusts for the following main effects and two-way interactions: sex, assessment centre, year of birth, year of T2D diagnosis, age at T2D diagnosis, time (restricted cubic spline, 4 knots), baseline HbA1c (hba1c\_base), medication at baseline (med\_base), change in medication from baseline (med\_change), sex\*hba1c\_base, sex\*time, hba1c\_base\*time, hba1c\_base\*med\_base, hba1c\_base\*med\_change, time\*med\_base and time\*med\_change. **b:** two-sided t-test with null  $H_0: \beta_p = 0$  (single parameter tested). **c:** joint null hypothesis  $H_0: \underline{\beta} = \underline{0}$  versus  $H_1: \underline{\beta} \neq \underline{0}$  (multiple parameters tested) outputted from anova function within rms. P-values in bold are  $< 0.05/25$ .



**Figure 2.** GLS mean model interaction between diabetic medication at baseline and depression diagnosis group. Assuming all else is equal<sup>a</sup>, this figure plots expected HbA1c across time stratified by sex, MDD diagnosis group and medication at baseline, and shows that individuals diagnosed with depression after their T2D diagnosis who received any diabetes medication at baseline are expected to have higher HbA1c values across follow-up compared to T2D patients with no, or a pre-existing depression diagnosis, also prescribed medication at baseline. This relationship is more pronounced for males than for females and is not observed for individuals who received no diabetes medication at baseline.

a. Additional covariates fixed in plot: assessment centre at centre 11010 (mode), year of birth at 1948 (median), year of baseline at 2009 (median), age at baseline at 59.7 years (median), HbA1c at baseline at 52 mmol/mol (median) and no change in medication from baseline.



**Figure 3.** Within-individual variability in standardised HbA1c (Variance) across time since baseline, by MDD diagnosis group (primary analysis) with 95% CIs (shaded region).

Variance =  $\sigma^2 \exp(2C_0(1 - I_{MDD=post}t)) \exp(2C_2(I_{MDD=post}t))$ , where  $t$  is time since baseline (years),  $I_{MDD=post}$  is an indicator variable which equals 1 for group of interest is the post-T2D MDD group, and 0 otherwise,  $\sigma$  is the residual standard error,  $C_0$  is the covariance model parameter for controls and pre-T2D MDD group, and  $C_2$  is the covariance model parameter for the post-T2D MDD group (see Supplementary Methods 8 for details). Estimated model parameters:  $\{\hat{\sigma}, \hat{C}_0, \hat{C}_2\} = \{0.778, -0.007, 0.028\}$ .

**Table 3.** Polygenic risk score (PRS) parameter estimates and hypothesis tests for the GLS mean model for HbA1c.

Term <sup>a</sup>	Estimate	(95% CI)	p-value <sup>b</sup>	Joint p-value <sup>c</sup>
<b>Main effect</b>				
MDD PRS	-0.01	(-0.03, 0.01)	4.77E-01	
<b>Interaction between MDD PRS and Time:</b>				
Time function 1 interaction	0.01	(0.00, 0.02)	1.69E-01	1.57E-01
Time function 2 interaction	-0.02	(-0.07, 0.04)	4.86E-01	
Time function 3 interaction	0.03	(-0.08, 0.15)	5.73E-01	



**Interaction between MDD PRS and:**

Sex	-0.01	(-0.02, 0.01)	2.37E-01
Baseline HbA1c	0.00	(-0.01, 0.00)	5.52E-01
Medication at baseline	0.02	( 0.00, 0.04)	1.16E-02
Medication change from baseline	0.00	( 0.00, 0.00)	3.18E-01

**Any MDD PRS association (main effect and interactions)**

6.06E-02

**a:** GLS model adjusts for the following main effects and two-way interactions: sex, assessment centre, year of birth, year of T2D diagnosis, age at T2D diagnosis, time (restricted cubic spline, 4 knots), baseline HbA1c (hba1c\_base), medication at baseline (med\_base), change in medication from baseline (med\_change), sex\*hba1c\_base, sex\*time, hba1c\_base\*time, hba1c\_base\*med\_base, hba1c\_base\*med\_change, time\*med\_base and time\*med\_change. **b:** two-sided t-test with null  $H_0: \beta_p = 0$  (single parameter tested). **c:** joint null hypothesis  $H_0: \underline{\beta} = \underline{0}$  versus  $H_1: \underline{\beta} \neq \underline{0}$  (multiple parameters tested) outputted from anova function within rms. There are no significant p-values ( $< 0.05/10$ ).