

1 **The incidence and mortality of COVID-19 related TB disease in Sub-Saharan Africa: A**  
2 **systematic review and meta-analysis**

3 Jacques L Tamuzi<sup>1\*</sup>, Gomer Lulendo<sup>2</sup>, Patrick Mbuesse<sup>2</sup>, Peter S. Nyasulu<sup>1,3\*</sup>

4 **Author affiliations**

5 <sup>1</sup>Division of Epidemiology and Biostatistics, Department of Global Health, Faculty of  
6 Medicine and Health Sciences, Stellenbosch University, Cape Town, South Africa

7 <sup>2</sup>Africa Centre for HIVAIDS management, Stellenbosch University, Cape Town, South  
8 Africa

9 <sup>3</sup>Division of Epidemiology and Biostatistics, School of Public Health, Faculty of Health  
10 Sciences, University of the Witwatersrand, Johannesburg, South Africa

11

12 **\* Corresponding Author:** Jacques L. Tamuzi Division of Epidemiology, Faculty of  
13 Medicine and Health Sciences, Stellenbosch University, Cape Town, South Africa. Emails:  
14 <[drjacques.tamuzi@gmail.com](mailto:drjacques.tamuzi@gmail.com)>

15 Jacques L Tamuzi (ORCID): 0000-0003-1070-1962

16 Peter S. Nyasulu (ORCID): 0000-0003-2757-0663

17

18

19

20

21

22 **Abstract**

23 **Background**

24 Coronavirus disease 2019 (COVID-19) is also associated with other co-morbidities in people  
25 who have previously or currently have pulmonary tuberculosis (PTB). PTB is a risk factor for  
26 COVID-19, both in terms of severity and mortality, regardless of HIV status. However, there  
27 is less information available on COVID-19 and PTB in terms of incidence and mortality rates  
28 in Sub-Saharan Africa (SSA), a high-burden TB region. This systematic review provided a  
29 data synthesis of available evidence on COVID-19/PTB incidence and case fatality rates, as  
30 well as mortality rates found in clinical and post-mortem COVID-19/PTB diagnostics in  
31 SSA.

32 **Methods**

33 We conducted an electronic search in the PubMed, Medline, Google Scholar, Medrxiv, and  
34 COVID-19 Global literature on coronavirus disease databases for studies involving COVID-  
35 19 and PTB in Sub-Saharan Africa. The primary outcomes were the incidence proportion of  
36 people with COVID-19 who had current or previous PTB, as well as the case fatality rate  
37 associated with COVID-19/PTB. Based on methodological similarities in the included  
38 random effect model studies, the combination method was developed using Stata version 16  
39 and Prometa 3 software. We also performed sensitivity analysis and meta-regression.

40 **Results**

41 From the 548 references extracted by the literature search, 25 studies were selected and  
42 included in the meta-analysis with a total of 191, 250 COVID-19 infected patients and 11,

43 480 COVID-19 deaths. The pooled COVID-19/PTB incidence was 3% [2%-5%] and a case  
44 fatality rate of 13% [4%-23%]. The pooled estimates for case fatality rate among COVID-  
45 19/PTB were 7% [1%-12%] for clinical PTB diagnostic and 25% [3%-47%] for post-mortem  
46 PTB diagnostic. Previous TB had the highest incidence and fatality rates with 46 [19-73] per  
47 1, 000 population and 8% [3%-19%], respectively. Meta-regression model including the  
48 effect sizes and cumulative COVID-19 cases ( $P= 0.032$ ), HIV prevalence ( $P= 0.041$ ), and TB  
49 incidence ( $P= 0.002$ ) to explain high heterogeneity between studies.

## 50 **Conclusion**

51 To summarize, the incidence of TB associated with COVID-19 is higher in SSA, as are the  
52 case fatality rates, when compared to the rest of the world. However, because the post-  
53 mortem TB diagnostic was higher, COVID-19 associated with TB may have been  
54 underreported in studies conducted in SSA. To confirm COVID-19/TB incidence and case  
55 fatality rates in SSA, large-scale cohort studies that adequately clear tools on previous and/or  
56 current TB diagnostic tools are required.

57

58 Key words: COVID-19, PTB, Incidence rate, Case fatality rate, sub-Saharan Africa

59 Review registration: PROSPERO (CRD42021233387)

60

61

62

63

64

65

66

67

68

## 69 **1. Background**

70 The coronavirus disease 2019 (COVID-19) pandemic has caused significant morbidity and  
71 mortality all over the world, with total confirmed cases more than 634 million globally and 6  
72 million deaths in 25 November 2022 [1]. In the African region, more than 9 million  
73 confirmed cases are already recorded, among them, 174,858 deaths on 25 November  
74 2022[1]. Though it is reported that the African region showed a decreasing trend in the  
75 number of deaths over the past several weeks compared to other World Health Organization  
76 (WHO) regions [1]. The age groups at highest risk of severe COVID-19 disease and death  
77 (those >60 years old) [2-4] may be proportionately less in many sub-Saharan Africa (SSA)  
78 countries than in other parts of the world [4]. In contradistinction to potential health  
79 vulnerabilities, sub-Saharan African countries could be “protected” from COVID-19  
80 mortality by an age structure differing significantly from countries where morbidity and  
81 mortality have been particularly high such as Italy, Spain, the United States, and in Hubei  
82 Province in China [5-7].

83 On the other hand, COVID-19 is associated with other co-morbidities in patients with  
84 previous or current pulmonary tuberculosis (PTB) [8]. A recent review found that PTB is a  
85 risk factor for COVID-19 regardless of HIV status, both in terms of severity and mortality  
86 [8]. Geographically, most people who developed tuberculosis (TB) live in South-East Asia  
87 (44%), Africa (25%), and the Western Pacific (18%) [9]. It is estimated that low- and middle-  
88 income countries, including SSA, account for 94% of all TB infections and deaths [10]. An

89 observational study found that people with latent or active tuberculosis were more vulnerable  
90 to infection with the severe acute respiratory syndrome coronavirus 2 (SARS-CoV-2) [11].  
91 This study found infection with *Mycobacterium tuberculosis* to be a more common co-  
92 morbidity for COVID-19 (36%) [11]. They also found *Mycobacterium tuberculosis* co-  
93 infection to be linked to more severe COVID-19 and more rapid progression [12]. Another  
94 study conducted in Zambia revealed that 31.4% of post-mortem PTB diagnoses in COVID-19  
95 deaths [13]. In countries where PTB risk factors for mortality are highly prevalent among  
96 young individuals (poverty, overcrowding, diabetes mellitus, smoking, alcohol and substance  
97 abuse, HIV co-infection, among others), particularly in the presence of drug resistance and  
98 difficult access to diagnosis (delayed diagnosis) [14, 15], COVID-19 incidence and mortality  
99 associated with PTB may be hypothesized as significant. However, COVID-19 associated  
100 with previous, current, or both PTB has been lower in high-burden TB countries. Both active  
101 and previous history of PTB may play a deleterious synergism SARS-CoV-2, increasing then  
102 the risk of COVID-19 associated mortality, and for patients with PTB may increase the  
103 severity of COVID-19 and of death due to chronic lung disease and immunosuppression [8].  
104 This may contribute to higher-than-expected mortality in high PTB-burden regions such as  
105 SSA.

106 Therefore, there is less information available on COVID-19 associated with PTB from the  
107 point of view of incidence and fatality rates in SSA. This systematic review served to provide  
108 data synthesis of available evidence on COVID-19/TB incidence and case fatality rates, and  
109 case fatality rates found in clinical and post-mortem COVID-19/TB diagnostics in SSA.

## 110 **2. Results**

### 111 **2.1. Search results**

112 From the 548 references extracted by the literature search (**Figure 1**), 64 articles were  
113 analysed, among which 33 were excluded with reasons, and 25 studies were selected and  
114 included in the meta-analysis and six studies were excluded as they were study protocols. We  
115 included a total of 191, 250 COVID-19 infected patients and 11, 480 COVID-19 deaths  
116 (**Supplemental material Table 1**).

117 The selected articles reported data from South Africa (n = 9), Nigeria (n = 4), Democratic  
118 Republic of Congo (n = 2), Angola (n=1), Uganda (n = 1), Zambia (n = 5), Ethiopia (n=2)  
119 and Kenya (n = 1) (**Figure 2 and Supplemental material Table 1**)

## 120 **2.2. Included studies**

121 Twenty-five studies were included for quantitative analysis. All the studies analysed clinical  
122 characteristics and co-morbidities of COVID-19 patients in SSA. Among them, twenty  
123 studies included the incidence proportion of COVID-19 associated with PTB [16-35], and  
124 nine studies included the case fatality rate of COVID-19 associated with TB [13, 16, 26, 29,  
125 34, 36-39].

126 The minimum age for the study population was 13 years and the maximum was 72 years.  
127 Incidence and case fatality of PTB associated with COVID-19, stratified by sex were not  
128 obvious as all the studies included common co-morbidities associated with COVID-19  
129 without sex stratification. The median study duration was 15 months (ranging, from 4 months  
130 to 45 years) and the study period ranged from 2020 to 2021. Eleven studies used retrospective  
131 case identification [13, 26-33, 36, 39], six prospective case identification [16-20, 35], and  
132 three were case series [20, 37, 38], three Cross-sectional studies [22-24], one cross-sectional  
133 and retrospective cohort study [34] and one case-control study [25] (**Supplementary  
134 material Table 1**).

## 135 **2.3. Study quality**

136 The Newcastle-Ottawa scale (NOS) was used to determine the methodological validity of  
137 included research for determining the consistency of cohort, case-control, and descriptive  
138 studies in meta-analyses. The three essential components of this strategy are range,  
139 comparability, and exposure (**Supplementary material Table 2 and Supplementary**  
140 **material method 3**). For case-control and cohort studies, the NOS employs a star system  
141 with ratings ranging from 0 to 9 (**Supplementary material Table 2 and Supplementary**  
142 **material method 3**). We considered a study with a higher score than the six of each type of  
143 study to be a high-quality study because the criteria for determining whether a study is a high  
144 or poor quality are unknown. Two studies scored eight, five scored seven, eight scored six,  
145 five scored five, and one scored four. **Supplementary material Table 2** shows the NOS  
146 scores for the studies that were included.

#### 147 **2.4. Outcomes measurement**

148 In this review, we defined the incidence proportion as the number of new cases of COVID-19  
149 associated with PTB over the total number of people in the population at risk for having  
150 COVID-19 during a specified period (**Supplementary material method 3**). The case fatality  
151 rate was defined as the total number of new deaths due to COVID-19 associated with TB  
152 divided by the total number of COVID-19 associated with PTB. The incidence and case  
153 fatality rates were summarized as specific period cases per 100 or 1, 000 (**Supplementary**  
154 **material method 3**). The incidence and case fatality rates of COVID-19 associated with TB  
155 were our primary outcomes. The incidence and case fatality rates of COVID-19 associated  
156 with previous and current TB were the secondary outcomes.

#### 157 **2.5. Meta-analysis and meta-regression**

##### 158 **2.5.1. Incidence proportion of COVID-19 associated with TB**

159 In total, 20 studies were identified for the incidence proportion of COVID-19 associated with  
160 PTB in SSA. The pooled RR-P [95% CI] was 3% [2%-5%] (**Figure 3**). The test for  
161 heterogeneity was statistically significant with ( $I^2 = 99.76$   $P < 0.0001$ ) (**Figure 3**).

### 162 **2.5.2. Incidence proportion of COVID-19 associated with current and previous TB**

163 Only six of the twenty studies included in the pooled result of the incidence proportion rate of  
164 COVID-19 associated with TB clearly classified current and previous TB. The pooled current  
165 and previous TB incidence proportion rate was 28 [13-43] per 1,000 population (**Figure 4**).  
166 Previous TB had the highest incidence proportion rate with 46 [19-73] per 1,000 population  
167 (**Figure 4**). The incidence proportion rates for current TB and current and past TB were 14  
168 [6-22] and 10 [9-11] per 1,000, respectively (**Figure 4**).

### 169 **2.5.3. Case fatality rate of COVID-19 associated with TB**

170 We identified ten studies [13, 16, 17, 26, 29, 34, 36-39] meeting the inclusion criteria  
171 relating mortality proportion of COVID-19 associated with PTB in SSA. The pooled RR-P  
172 [95%CI] estimates for mortality proportion among patients with COVID-19 associated with  
173 TB were 7% [1%-12%] for clinical PTB diagnostic and 25% [3%-47%] for post-mortem PTB  
174 diagnostic. The overall pooled RR-P was 13% [4%-23%] (**Figure 5**). Heterogeneity between  
175 studies was high ( $I^2 = 98.82$ ,  $P < 0.001$ ) however, the test for subgroup analysis did not show  
176 any difference between the groups (**Figure 5**).

### 177 **2.5.4. Case fatality rate of COVID-19 associated with current and previous TB**

178 In the meta-analysis of the case fatality rate of COVID-19 associated with current and  
179 previous TB, four studies clearly categorized clinical diagnoses of current and previous TB.  
180 Previous TB had the highest case fatality rate of 8% [3%-19%] (**Figure 6**). Current TB and  
181 current and past TB had a case fatality of 3% [1%-4%] and 1% [1%-1%], respectively  
182 (**Figure 6**).



### 183 **2.5.3. Meta-regression**

184 We built a multivariate meta-regression model including cumulative COVID-19 cases, HIV  
185 prevalence, and TB incidence to explore heterogeneity between studies. People living with  
186 HIV (all ages), TB incidence rate, and cumulative COVID-19 cases were (7, 800, 000; 360 in  
187 thousands; 3, 533, 106) for South Africa, (1, 700, 000; 440 in thousands; 231, 413) for  
188 Nigeria, (1 700 000; 59 in thousands, 221, 880) for Zambia, (1, 500, 000; 157 in thousands;  
189 382, 371) for Ethiopia, (510, 000; 278 in thousands; 70, 059) for the Democratic Republic of  
190 Congo, (1, 400, 000; 140 in thousands; 270, 899) for Kenya, (340, 000; 112 in thousands; 65,  
191 938) for Angola and ( 1, 400, 000; 253 in thousands; 130, 178 ) for Uganda [1, 40, 41]. This  
192 model showed that the variability across studies was explained by COVID-19 cumulative  
193 cases by countries ( $P= 0.032$ ), HIV prevalence ( $P= 0.041$ ), and TB incidence ( $P= 0.002$ ).

### 194 **2.5.4. Publication bias**

195 Egger's and Mazumdar's rank correlation test and Begg's funnel plot were used to evaluate  
196 publication bias quantitatively and qualitatively respectively. Asymmetry was found in the  
197 plot including COVID-19/TB incidence proportion (**Figure 7**). Both Egger's and  
198 Mazumdar's rank correlation tests did not exhibit obvious publication bias in different studies  
199 included in the review because the P-values of both tests for COVID-19/TB incidence rate  
200 were (-1.10,  $P = 0.285$ ) and (-0.26,  $P = 0.795$ ), respectively. Furthermore, P-values of both  
201 tests for COVID-19/TB mortality rate were [Egger's test ( $t = 0.49$ ,  $p = 0.642$ )] 0.173 and  
202 [Begg and Mazumdar's rank correlation test ( $z = -0.83$ ,  $p = 0.404$ )], respectively.

### 203 **2.5.5. Sensitivity analysis**

204 For all the studies including in COVID-19/TB incidence and case fatality rate in SSA,  
205 sensitivity analysis was performed by sequential omission of every study respectively

206 Prometa 3 (**Supplementary material method 3**). For every incidence and mortality rate, the  
207 RR-P was not significantly influenced by omitting any single study.

### 208 **3. Discussion**

209 The objective of this review was to help us to estimate the burden of COVID-19 associated  
210 with TB in SSA; the meta-analysis including twenty studies and 191, 250 COVID-19  
211 infected cases demonstrated that the overall pooled incidence proportion was 3% [2%-5%].  
212 Our COVID-19/TB incidence was higher than the incidence found in a recent meta-analysis  
213 of forty-three studies which showed the pooled estimate for the proportion of active PTB was  
214 1.07% [0.81%-1.36%] [42]. This systematic review included more studies conducted in low  
215 and moderate TB prevalence compared to our review which included studies in high-burden  
216 TB countries in SSA. Additionally, this review only included active PTB associated with  
217 COVID-19, compared to our study which included COVID-19 cases with previous and/or  
218 active TB.

219 The case fatality rate of COVID-19/TB including nine studies and 11,480 COVID-19 deaths  
220 was 13% [4%-23%]. However, the meta-analysis of subgroup analysis (clinical vs post-  
221 mortem TB diagnostics) showed post-mortem PTB diagnostic counted higher case fatality  
222 rate than clinical PTB diagnostic with 25% [3%-47%] for post-mortem TB diagnostic  
223 compared to 7% [1%-12%] for PTB clinical diagnostic. Our case fatality rate was higher than  
224 a meta-analysis including seventeen studies with 42,321 COVID-19 patients, of whom 632  
225 (1.5%) had TB, reported on deaths due to COVID-19 [42]. Our high case fatality rate may be  
226 justified by the same reasons referred to COVID-19/TB incidence. Interestingly, our review  
227 has shown that TB was among the most common co-morbidity in COVID-19 patients in  
228 SSA. This is consistent with findings in other studies including high TB post-mortem  
229 diagnostic in SSA [43, 44]. Referring to a meta-analysis showing that TB exposure was in the

230 high-risk COVID-19 group (OR 1.67, 95% CI 1.06–2.65) [8]. COVID-19/TB clinical  
231 diagnostic may be underestimated in SSA as post-mortem TB diagnostic has shown a high  
232 mortality rate. Tamuzi et al. have suggested an algorithm for suspected COVID-19/TB  
233 diagnostic in high-burden HIV/TB countries [8]. This algorithm may reflect the true COVID-  
234 19/TB incidence in high-burden TB countries and reduce COVID-19/TB severity rate OR  
235 4.50 (95% CI 1.12–18.10) and mortality (OR 2.23, 95% CI 1.83–2.74) compared to non-TB  
236 group [8].

237 This deleterious synergism of SARS-CoV-2 and *Mycobacterium tuberculosis* increases the  
238 risk of COVID-19-associated morbidity and mortality [8], and patients with PTB may  
239 increase the severity of COVID-19 and death due to chronic lung disease and  
240 immunosuppression. In fact, advanced PTB is characterized by significant collagen  
241 deposition and fibrosis [45-46], although tissue remodelling during fibrosis is a healing  
242 process, extensive fibrosis with scar formation impairs lung function [47]. A study reported a  
243 series of 454 cases of massive fibrosis with evidence of TB in 40% [48]. Furthermore,  
244 Angiotensin-converting enzyme 2 (ACE2) has been reported to play a protective role in lung  
245 fibrosis [49]. In lung biopsy specimens of patients with lung fibrosis, ACE2 messenger RNA  
246 (mRNA) and enzyme activity decreased significantly [49, 50]. Interestingly, SARS-CoV-2  
247 spike protein decreases the amount of ACE2 expression during viral infection [51].  
248 Decreased ACE2 expression results in increased Angiotensin II (ANG-II) levels and  
249 contributes to lung fibrosis and pulmonary failure [49]. In three different acute lung injury  
250 models, loss of ACE2 expression precipitated serious acute lung failure, while recombinant  
251 human ACE2 (RhACE2) attenuated acute respiratory distress syndrome (ARDS) and further  
252 decreased ANG-II levels in the lungs [52, 53]. In addition to transforming growth factor beta  
253 (TGF-  $\beta$ ), and ACE2, other pathways can contribute to SARS-CoV-2 mediated lung fibrosis.  
254 Monocyte chemoattractant protein 1 (MCP-1) is a chemokine that causes lung fibrosis. In

255 addition, there are permanent changes in lung architecture after TB due, in part, to aberrant  
256 wound-healing processes [54]. Regulation of the TGF- $\beta$  signalling pathway was also  
257 associated with elevated levels of collagen in lung lesions prior to and during TB [54, 55].  
258 The TGF- $\beta$  activation pathways in both SARS-CoV-2 and PTB contribute to the production  
259 of fibrin, collagen, and secreted proteases (Matrix metalloproteinases) associated with human  
260 cavities involved in the formation of fibrosis and tissue remodelling [47]. In summary, the  
261 presence of cavitory lesions, fibrosis, and extensive lung pathology was then identified as a  
262 major risk factor for poor COVID-19/TB outcomes, which could be explained by reduced  
263 drug penetration due to minimal blood supply in fibrotic lung sites [56]. This is consistent  
264 with our study findings, which revealed that previous TB had the highest incidence  
265 proportion and case fatality rate among COVID-19 when compared to current TB. In fact,  
266 previous TB patients may be more prone to cavitory lesions, fibrosis, and extensive lung  
267 pathology. Lastly, the transient immunosuppression characterized both COVID-19 and  
268 current TB, a reason for poorer IgG antibody response and a delayed viral clearance in co-  
269 infected SARS-CoV-2 patients, and the use of corticoid therapy in SARS-CoV-2 added even  
270 more on immunosuppression [8]. This could be explained by significant cases of current TB  
271 who are likely on TB treatment or were latent TB infection (LTBI) among HIV-infected  
272 cases included in the pooled result of the current TB studies by Jassat et al., 2020; Boulle et  
273 al., 2020; and Parker et al., 2020 (Supplementary Table 1).

274 There are several implications to our findings in screening TB concomitantly to COVID-19  
275 in SSA. Our findings indicate that the risks of COVID-19 associated with previous and/or  
276 current TB may be underestimated in SSA, as this co-infection is poorly reported. Although  
277 there is a paucity of accurate epidemiological data about COVID-19 associated with previous  
278 and/or current TB, the fatality rate is estimated high. Therefore, COVID-19 associated with  
279 TB should be taken in the context of proper history taking, accurate diagnostic tools, and

280 clear management [8]. Then, clinicians dealing with a possible SARS-CoV-2 patient from a  
281 high-burden TB region should never forget TB as a coexisting pathology.

282 There was substantial variation between studies that looked at the incidence and case fatality  
283 rates. This heterogeneity can be explained by a model that includes cumulative COVID-19  
284 cases, HIV prevalence, and TB incidence, all of which vary significantly across countries.  
285 Meta-regression revealed statistically significant p-values for the relationship between effect  
286 size and our model. Furthermore, the RR-P was not significantly influenced by omitting any  
287 single study in a sensitivity analysis performed by sequentially omitting every study for every  
288 incidence and mortality rate. To assess publication bias quantitatively and qualitatively,  
289 Egger's and Mazumdar's rank correlation test and Begg's funnel plot were used. Asymmetry  
290 was found in the plot that included the COVID-19/TB incidence proportion (Fig 7). Because  
291 the P-values of both tests for COVID-19/TB incidence rate were (-1.10, P = 0.285) and (-  
292 0.26, P = 0.795), respectively, neither Egger's nor Mazumdar's rank correlation tests showed  
293 obvious publication bias in different studies included in the review. Furthermore, the P-values  
294 for [Egger's test (t = 0.49, p = 0.642)] 0.173 and [Begg and Mazumdar's rank correlation test  
295 (z = -0.83, p = 0.404)] for COVID-19/TB mortality rate were 0.173 and 0.404, respectively.

296 Our systematic review is limited by the quality of the included studies: first, the majority  
297 involved retrospective data analyses, which increase the risk of bias associated with the  
298 recording of baseline data, the need for imputation, and potential selection bias. Retrospective  
299 studies did not report how missing data were managed or if imputation was used.  
300 Considerable risk of selection bias was noted in retrospective and cross-sectional studies.  
301 Finally, the results of the case fatality meta-analysis should be interpreted with caution  
302 because data pooling the post-mortem PTB diagnostic and previous TB were all extracted in  
303 studies conducted in Zambia [13, 37-39] and South Africa [16, 26], respectively. This could  
304 limit the external validity of the review. Future studies should be meticulously designed with

305 high-quality and systematic methods of PTB diagnostic associated with COVID-19. This  
306 will play a substantial role in reflecting the true incidence and mortality rates of COVID-  
307 19/TB in SSA. Furthermore, post-COVID pulmonary fibrosis (PCPF) or long COVID-19-  
308 related interstitial lung disease (LC-ILD) associated with current or previous TB requires  
309 more attention and research in high HIV/TB burden regions such as SSA.

#### 310 **4. Conclusion**

311 This is a systematic review of the incidence proportion and case fatality rate of COVID-19  
312 associated with tuberculosis in SSA. This study found that the incidence of tuberculosis  
313 associated with COVID-19 is higher in SSA than in the rest of the world, as are the case  
314 fatality rates. Previous TB among COVID-19 patients had the highest incidence proportion  
315 and case fatality rates. However, due to the lack of specific COVID-19/TB diagnostic tools,  
316 COVID-19 associated with PTB may be underreported in studies conducted in SSA. This is  
317 supported by the high case fatality rate of COVID-19/TB in post-mortem diagnostic. Large-  
318 scale cohort studies with a sufficiently clear tool on previous and/or current PTB diagnostic  
319 tools are required to confirm COVID-19/TB incidence and case fatality.

320

321

#### 322 **5. Abbreviations**

323 ACE2: Angiotensin-Converting Enzyme 2; ARDS: Acute respiratory distress syndrome;  
324 COVID-19: Coronavirus disease 2019; HIV: human immunodeficiency virus; LC-ILD: long  
325 COVID-19-related interstitial lung disease; MCP-1: Monocyte Chemoattractant Protein-1;  
326 mRNA: messenger RNA; NOS: Newcastle-Ottawa scale; PCPF: post-COVID pulmonary  
327 fibrosis; PRISMA: Preferred Reporting Items for Systematic Reviews and Meta-Analyses;  
328 PTB: pulmonary tuberculosis; SSA: sub-Saharan Africa; SARS-CoV-2: Severe acute

329 respiratory syndrome coronavirus 2; TB: tuberculosis; TGF- $\beta$ : transforming growth factor;  
330 WHO: World Health Organization;

## 331 **6. Footnotes**

332 **Contributions:** JLT conceived the study and developed the protocol. JLT did the literature  
333 search and selected the studies. JLT and GL reviewed the methodological quality of the study  
334 and extracted the relevant information. JLT synthesized the data. JLT wrote the first draft of  
335 the paper. GL and PB revised successive drafts of the paper. PSN supervised the review  
336 steps. All the authors approved its final version. JLT is the guarantor of the study.

337 **Ethics approval and consent to participate:** Not required.

338 **Consent for publication:** Not applicable.

339 **Competing interests:** None of the authors in this study have any conflict of interest  
340 regarding the publication of the paper.

## 341 **7. References**

- 342 1. WHO. COVID-19 Weekly Epidemiological Update, Edition 119 published 23  
343 November 2022.
- 344 2. Candido DDS, Watts A, Abade L, Kraemer MUG, Pybus OG, Croda J, Oliveira W,  
345 Khan K, Sabino EC, Faria NR. Routes for COVID-19 importation in Brazil. *J Trav*  
346 *Med* 2020; 27: taaa042.
- 347 3. World Health Organization, Electronic State Parties Self-Assessment Annual  
348 Reporting Tool (e-SPAR), 2019. Available at: <https://extranet.who.int/e-spar>.
- 349 4. Skrip LA, Selvaraj P, Hagedorn B, Ouédraogo AL, Noori N, Orcutt A, Mistry D,  
350 Bedson J, Hébert-Dufresne L, Scarpino SV, Althouse BM. Seeding COVID-19 across

- 351 Sub-Saharan Africa: An Analysis of Reported Importation Events across 49  
352 Countries. *Am J Trop Med Hyg.* 2021;104(5):1694–702.
- 353 5. Chintalapudi N, Battineni G, Amenta F. COVID-19 virus outbreak forecasting of  
354 registered and recovered cases after sixty-day lockdown in Italy: a data driven model  
355 approach. *J Microbiol Immunol Infect* 2020;53: 396–403.
- 356 6. Chen Y, Li Z, Zhang YY, Zhao YH, Yu ZY. 2020. Maternal health care management  
357 during the outbreak of coronavirus disease 2019. *J Med Virol* 92: 731–739.
- 358 7. Bell D, Hansen KS, Kiragga AN, Kambugu A, Kissa J, Mbonye AK. Predicting the  
359 Impact of COVID-19 and the Potential Impact of the Public Health Response on  
360 Disease Burden in Uganda. *Am J Trop Med Hyg.* 2020;103(3):1191-1197.
- 361 8. Tamuzi JL, Ayele BT, Shumba CS, Adetokunboh OO, Uwimana-Nicol J, Haile ZT,  
362 Inugu J, Nyasulu PS. Implications of COVID-19 in high burden countries for  
363 HIV/TB: A systematic review of evidence. *BMC Infect Dis.* 2020;20(1):744.
- 364 9. WHO. Global Tuberculosis report, 2020.  
365 [https://www.who.int/tb/publications/global\\_report/TB20\\_Exec\\_Sum\\_20201014.pdf](https://www.who.int/tb/publications/global_report/TB20_Exec_Sum_20201014.pdf)
- 366 10. Kuupiel D, Vezi P, Bawontuo V, Osei E, Mashamba-Thompson TP. Tuberculosis  
367 active case-finding interventions and approaches for prisoners in sub-Saharan Africa:  
368 a systematic scoping review. *BMC Infect Dis.* 2020;20(1):570.
- 369 11. Chen Y, Wang Y, Fleming J, Yu Y, Gu Y, Liu C, Fan L, Wang X, Cheng M, Bi L,  
370 Liu Y. Active or latent tuberculosis increases susceptibility to COVID-19 and disease  
371 severity. <https://www.medrxiv.org/content/10.1101/2020.03.10.20033795v1.full.pdf>



- 372 12. Udwadia ZF, Vora A, Tripathi AR, Malu KN, Lange C, Sara Raju R. COVID-19 -  
373 Tuberculosis interactions: When dark forces collide. *Indian J Tuberc.* 2020;67(4S):  
374 S155-S162.
- 375 13. Mwananyanda L, Gill CJ, MacLeod W, Kwenda G, Pieciak R, Mupila Z, Lapidot R,  
376 Mupeta F, Forman L, Ziko L, Etter L, Thea D. Covid-19 deaths in Africa: prospective  
377 systematic postmortem surveillance study. *BMJ.* 2021;372: n334.
- 378 14. Migliori GB, Thong PM, Akkerman O, Alffenaar JW, Álvarez-Navascués F, Assao-  
379 Neino MM, Bernard PV, Biala JS, Blanc FX, Bogorodskaya EM, Borisov S,  
380 Buonsenso D, Calnan M, Castellotti PF, Centis R, Chakaya JM, Cho JG, Codecasa  
381 LR, D'Ambrosio L, Denholm J, Enwerem M, Ferrarese M, Galvão T, García-  
382 Clemente M, García-García JM, Gualano G, Gullón-Blanco JA, Inwentarz S, Ippolito  
383 G, Kunst H, Maryandyshev A, Melazzini M, de Queiroz Mello FC, Muñoz-Torrico  
384 M, Njung'iyini PB, Palmero DJ, Palmieri F, Piccioni P, Piubello A, Rendon A, Sabriá  
385 J, Saporiti M, Scognamiglio P, Sharma S, Silva DR, Souleymane MB, Spanevello A,  
386 Tabernero E, Tadolini M, Tchangou ME, Thornton ABY, Tiberi S, Udwadia ZF,  
387 Sotgiu G, Ong CWM, Goletti D. Worldwide Effects of Coronavirus Disease  
388 Pandemic on Tuberculosis Services, January-April 2020. *Emerg Infect Dis.*  
389 2020;26(11):2709-2712.
- 390 15. Mousquer GT, Peres A, Fiegenbaum M. Pathology of TB/COVID-19 Co-Infection:  
391 The phantom menace. *Tuberculosis (Edinb).* 2021; 126:102020.
- 392 16. Western Cape Department of Health in collaboration with the National Institute for  
393 Communicable Diseases, South Africa. Risk Factors for Coronavirus Disease 2019  
394 (COVID-19) Death in a Population Cohort Study from the Western Cape Province,  
395 South Africa. *Clin Infect Dis.* 2021;73(7): e2005-e2015.

- 396 17. Nachega JB, Ishoso DK, Otokoye JO, Hermans MP, Machekano RN, Sam-Agudu  
397 NA, Bongo-Pasi Nswe C, Mbala-Kingebeni P, Madinga JN, Mukendi S, Kolié MC,  
398 Nkwembe EN, Mbuyi GM, Nsio JM, Mukeba Tshialala D, Tshiasuma Pipo M,  
399 Ahuka-Mundeke S, Muyembe-Tamfum JJ, Mofenson L, Smith G, Mills EJ, Mellors  
400 JW, Zumla A, Mavungu Landu DJ, Kayembe JM. Clinical Characteristics and  
401 Outcomes of Patients Hospitalized for COVID-19 in Africa: Early Insights from the  
402 Democratic Republic of the Congo. *Am J Trop Med Hyg.* 2020;103(6):2419-2428.
- 403 18. van der Zalm MM, Lishman J, Verhagen LM, Redfern A, Smit L, Barday M, Ruttens  
404 D, da Costa A, van Jaarsveld S, Itana J, Schrueder N, Van Schalkwyk M, Parker N,  
405 Appel I, Fourie B, Claassen M, Workman JJ, Goussard P, Van Zyl G, Rabie H.  
406 Clinical Experience with Severe Acute Respiratory Syndrome Coronavirus 2-Related  
407 Illness in Children: Hospital Experience in Cape Town, South Africa. *Clin Infect Dis.*  
408 2021;72(12): e938-e944.
- 409 19. Kirenga B, Muttamba W, Kayongo A, Nsereko C, Siddharthan T, Lusiba J, Mugenyi  
410 L, Byanyima RK, Worodria W, Nakwagala F, Nantanda R, Kimuli I, Katagira W,  
411 Bagaya BS, Nasinghe E, Aanyu-Tukamuhebwa H, Amuge B, Sekibira R, Buregyeya  
412 E, Kiwanuka N, Muwanga M, Kalungi S, Joloba ML, Kateete DP, Byarugaba B,  
413 Kanya MR, Mwebesa H, Bazeyo W. Characteristics and outcomes of admitted  
414 patients infected with SARS-CoV-2 in Uganda. *BMJ Open Respir Res.* 2020;7(1):  
415 e000646.
- 416 20. Gebrecherkos T, Gessesse Z, Kebede Y, Gebreegzabher A, Tassew G, Abdulkader M,  
417 Ebuy H, Desta A, Hailu A, Harris V, de Wit TR. Effect of co-infection with parasites  
418 on severity of COVID-19.  
419 <https://www.medrxiv.org/content/10.1101/2021.02.02.21250995v1>

- 420 21. Zamparini J, Venturas J, Shaddock E, Edgar J, Naidoo V, Mahomed A, Mer M, Bolon  
421 S, Smith O, Motara F, Laher A. Clinical characteristics of the first 100 COVID-19  
422 patients admitted to a tertiary hospital in Johannesburg, South Africa. *Wits Journal of*  
423 *Clinical Medicine*. 2020;2(2):105-14.
- 424 22. Otuonye NM, Olumade TJ, Ojetunde MM, Holdbrooke SA, Ayoola JB, Nyam IY,  
425 Iwalokun B, Onwuamah C, Uwandu M, Abayomi A, Osibogun A, Bowale A,  
426 Osikomaiya B, Thomas B, Mutiu B, Odunukwe NN. Clinical and Demographic  
427 Characteristics of COVID-19 patients in Lagos, Nigeria: A Descriptive Study. *J Natl*  
428 *Med Assoc*. 2021;113(3):301-306.
- 429 23. Parker A, Koegelenberg CFN, Moolla MS, Louw EH, Mowlana A, Nortjé A, Ahmed  
430 R, Brittain N, Lalla U, Allwood BW, Prozesky H, Schrueder N, Taljaard JJ. High  
431 HIV prevalence in an early cohort of hospital admissions with COVID-19 in Cape  
432 Town, South Africa. *S Afr Med J*. 2020;110(10):982-987.
- 433 24. Sebastião CS, Neto Z, Martinez P, Jandondo D, Antonio J, Galangue M, de Carvalho  
434 M, David K, Miranda J, Afonso P, Inglês L, Carretero RR, de Vasconcelos JN,  
435 Morais J. Sociodemographic characteristics and risk factors related to SARS-CoV-2  
436 infection in Luanda, Angola. *PLoS One*. 2021;16(3): e0249249.
- 437 25. du Bruyn E, Stek C, Daroowala R, Said-Hartley Q, Hsiao M, Goliath RT, Abrahams  
438 F, Jackson A, Wasserman S, Allwood B, Davis AG. Communicable and non-  
439 communicable co-morbidities and the presentation of COVID-19 in an African setting  
440 of high HIV-1 and tuberculosis prevalence.  
441 [https://www.medrxiv.org/content/medrxiv/early/2021/05/11/2021.05.11.21256479.full](https://www.medrxiv.org/content/medrxiv/early/2021/05/11/2021.05.11.21256479.full.pdf)  
442 [pdf](https://www.medrxiv.org/content/medrxiv/early/2021/05/11/2021.05.11.21256479.full.pdf)

- 443 26. Jassat W, Cohen C, Tempia S, Masha M, Goldstein S, Kufa T, Murangandi P,  
444 Savulescu D, Walaza S, Bam JL, Davies MA. COVID-19 in-hospital mortality in  
445 South Africa: The intersection of communicable and non-communicable chronic  
446 diseases in a high HIV prevalence setting, 2020.  
447 [https://papers.ssrn.com/sol3/papers.cfm?abstract\\_id=3783089](https://papers.ssrn.com/sol3/papers.cfm?abstract_id=3783089)
- 448 27. Hassan Z, Hashim MJ, Khan G. Population risk factors for COVID-19 deaths in  
449 Nigeria at sub-national level. *Pan Afr Med J.* 2020;35(Suppl 2):131.
- 450 28. Hesse R, van der Westhuizen DJ, George JA. COVID-19-Related Laboratory Analyte  
451 Changes and the Relationship Between SARS-CoV-2 and HIV, TB, and HbA1c in  
452 South Africa. *Adv Exp Med Biol.* 2021; 1321:183-197.
- 453 29. Ombajo LA, Mutono N, Sudi P, Mutua M, Sood M, Loo AM, Juma P, Odhiambo J,  
454 Shah R, Wangai F, Maritim M. Epidemiological and clinical characteristics of  
455 COVID-19 patients in Kenya.  
456 <https://www.medrxiv.org/content/10.1101/2020.11.09.20228106v1>
- 457 30. Abayomi A, Osibogun A, Kanma-Okafor O, Idris J, Bowale A, Wright O, Adebayo  
458 B, Balogun M, Ogboye S, Adeseun R, Abdus-Salam I, Mutiu B, Saka B, Lajide D,  
459 Yenyi S, Agbolagorite R, Onasanya O, Erinoshio E, Obasanya J, Adejumo O, Adesola  
460 S, Oshodi Y, Akase IE, Ogunbiyi S, Omosun A, Erinoso F, Abdur-Razzaq H, Osa N,  
461 Akinroye K. Morbidity and mortality outcomes of COVID-19 patients with and  
462 without hypertension in Lagos, Nigeria: a retrospective cohort study. *Glob Health Res*  
463 *Policy.* 2021;6(1):26
- 464 31. Abraha HE, Gessesse Z, Gebrecherkos T, Kebede Y, Weldegiargis AW, Tequare MH,  
465 Welderufael AL, Zenebe D, Gebremariam AG, Dawit TC, Gebremedhin DW, de Wit  
466 TR, Wolday D. Clinical features, and risk factors associated with morbidity and

- 467 mortality among patients with COVID-19 in northern Ethiopia. *Int J Infect Dis.* 2021;  
468 105:776-783.
- 469 32. Bepouka BI, Mandina M, Makulo JR, Longokolo M, Odio O, Mayasi N, Pata T,  
470 Nsangana G, Tshikangu F, Mangala D, Maheshe D, Nkarnkwin S, Muamba J, Ndaie  
471 G, Ngwizani R, Yanga Y, Nkodila A, Keke H, Kokusa Y, Lepira F, Kashongwe I,  
472 Mbula M, Kayembe JM, Situakibanza H. Predictors of mortality in COVID-19  
473 patients at Kinshasa University Hospital, Democratic Republic of the Congo, from  
474 March to June 2020. *Pan Afr Med J.* 2020; 37:105.
- 475 33. Ibrahim OR, Suleiman BM, Abdullahi SB, Oloyede T, Sanda A, Gbadamosi MS,  
476 Yusuf BO, Iliyasu RY, Ibrahim LM, Danladi Dawud A, Bashir SS, Okonta NE, Umar  
477 WF, Tekobo AG, Abubakar MS, Aminu BT, Ibrahim SO, Olaosebikan R, Mokuolu  
478 OA. Epidemiology of COVID-19 and Predictors of Outcome in Nigeria: A Single-  
479 Center Study. *Am J Trop Med Hyg.* 2020;103(6):2376-2381.
- 480 34. Mash RJ, Presence-Vollenhoven M, Adeniji A, Christoffels R, Doubell K, Eksteen L,  
481 Hendrikse A, Hutton L, Jenkins L, Kapp P, Lombard A, Marais H, Rossouw L, Stuve  
482 K, Ugoagwu A, Williams B. Evaluation of patient characteristics, management, and  
483 outcomes for COVID-19 at district hospitals in the Western Cape, South Africa:  
484 descriptive observational study. *BMJ Open.* 2021;11(1): e047016.
- 485 35. Chanda D, Minchella PA, Kampamba D, Itoh M, Hines JZ, Fwoloshi S, Boyd MA,  
486 Hamusonde K, Chirwa L, Nikoi K, Chirwa R, Siwingwa M, Sivile S, Zyambo KD,  
487 Mweemba A, Mbewe N, Mutengo KH, Malama K, Agolory S, Mulenga LB. COVID-  
488 19 Severity and COVID-19-Associated Deaths Among Hospitalized Patients with  
489 HIV Infection - Zambia, March-December 2020. *MMWR Morb Mortal Wkly Rep.*  
490 2021;70(22):807-810.

- 491 36. Pillay-van Wyk V, Bradshaw D, Groenewald P, Seocharan I, Manda S, Roomaney  
492 RA, Awotiwon O, Nkwenika T, Gray G, Buthelezi SS, Mkhize ZL. COVID deaths in  
493 South Africa: 99 days since South Africa's first death. *S Afr Med J*.  
494 2020;110(11):1093-1099.
- 495 37. Mudenda V, Mumba C, Pieciak RC, Mwananyanda L, Chimoga C, Ngoma B, Mupila  
496 Z, Kwenda G, Forman L, Lapidot R, MacLeod WB, Thea DM, Gill CJ.  
497 Histopathological Evaluation of Deceased Persons in Lusaka, Zambia with or Without  
498 Coronavirus Disease 2019 (COVID-19) Infection: Results Obtained from Minimally  
499 Invasive Tissue Sampling. *Clin Infect Dis*. 2021;73(Suppl\_5): S465-S471.
- 500 38. Mucheleng'anga LA, Telendiy V, Hamukale A, Shibemba AL, Zumla A, Himwaze  
501 CM. COVID-19 and Sudden Unexpected Community Deaths in Lusaka, Zambia,  
502 Africa - A Medico-Legal Whole-Body Autopsy Case Series. *Int J Infect Dis*. 2021;  
503 109:160-167.
- 504 39. Himwaze CM, Telendiy V, Maate F, Mupeta S, Chitalu C, Chanda D, Julius P,  
505 Mumba C, Marimo C, Hamukale A, Mulenga L, Shibemba AL, Zumla A,  
506 Mucheleng'anga LA. Post-mortem examination of Hospital Inpatient COVID-19  
507 Deaths in Lusaka, Zambia - A Descriptive Whole-body Autopsy Series. *Int J Infect*  
508 *Dis*. 2021; 108:363-369.
- 509 40. UNAIDS. UNAIDS data 2021.  
510 [https://www.unaids.org/en/resources/documents/2021/2021\\_unaids\\_data](https://www.unaids.org/en/resources/documents/2021/2021_unaids_data)
- 511 41. WHO. Global Tuberculosis Report 2021. [https://www.who.int/teams/global-](https://www.who.int/teams/global-tuberculosis-programme/tb-reports/global-tuberculosis-report-2021)  
512 [tuberculosis-programme/tb-reports/global-tuberculosis-report-2021](https://www.who.int/teams/global-tuberculosis-programme/tb-reports/global-tuberculosis-report-2021)

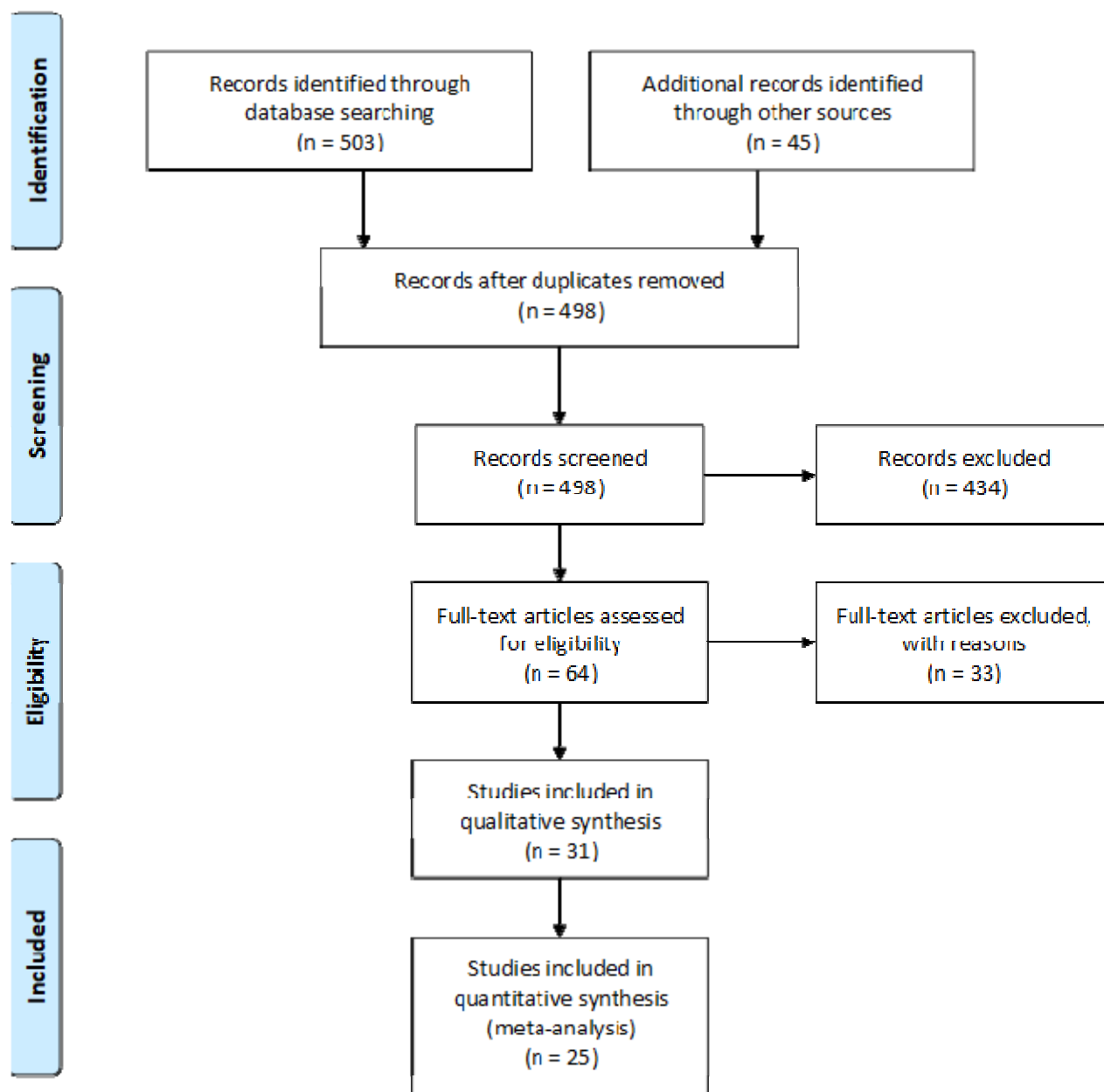
- 513 42. Aggarwal AN, Agarwal R, Dhooria S, Prasad KT, Sehgal IS, Muthu V. Active  
514 pulmonary tuberculosis and coronavirus disease 2019: A systematic review and meta-  
515 analysis. *PLoS One*. 2021;16(10): e0259006.
- 516 43. Bates M, Mudenda V, Shibemba A, Kaluwaji J, Tembo J, Kabwe M, Chimoga C,  
517 Chilukutu L, Chilufya M, Kapata N, Hoelscher M, Maeurer M, Mwaba P, Zumla A.  
518 Burden of tuberculosis at postmortem in inpatients at a tertiary referral centre in sub-  
519 Saharan Africa: a prospective descriptive autopsy study. *Lancet Infect Dis*.  
520 2015;15(5):544-51.
- 521 44. Gupta RK, Lucas SB, Fielding KL, Lawn SD. Prevalence of tuberculosis in post-  
522 mortem studies of HIV-infected adults and children in resource-limited settings: a  
523 systematic review and meta-analysis. *AIDS*. 2015;29(15):1987-2002.
- 524 45. Hunter RL. Pathology of post primary tuberculosis of the lung: an illustrated critical  
525 review. *Tuberculosis (Edinburgh, Scotland)* 2011;91(6):497-509.
- 526 46. Subbian S, Tsenova L, Kim MJ, Wainwright HC, Visser A, Bandyopadhyay N,  
527 Bader JS, Karakousis PC, Murrmann GB, Bekker LG, Russell DG, Kaplan G. Lesion-  
528 Specific Immune Response in Granulomas of Patients with Pulmonary Tuberculosis:  
529 A Pilot Study. *PLoS One*. 2015;10(7): e0132249.
- 530 47. Tsenova L, Singhal A. Effects of host-directed therapies on the pathology of  
531 tuberculosis. *The Journal of pathology* 2020; <https://doi.org/10.1002/path.5407>.
- 532 48. Rivers D, James WRL, Davies DG, Thomson S. The prevalence of tuberculosis at  
533 necropsy in progressive massive fibrosis of coalworkers. *British journal of industrial*  
534 *medicine* 1957; 14(1):39.

- 535 49. Zuo W, Zhao X, Chen Y-G. SARS Coronavirus and Lung Fibrosis. In: Molecular  
536 Biology of the SARS-Coronavirus. Springer, 2010:247-58.
- 537 50. Li X, Molina-Molina M, Abdul-Hafez A, Uhal V, Xaubet A, Uhal BD. Angiotensin  
538 converting enzyme-2 is protective but downregulated in human and experimental lung  
539 fibrosis. American Journal of Physiology-Lung Cellular and Molecular Physiology  
540 2008; 295(1): L178-85.
- 541 51. Kuba K, Imai Y, Rao S, Gao H, Guo, F., Guan B, Huan Y, Yang P, Zhang Y, Deng,  
542 W. and Bao, L., 2005. A crucial role of angiotensin converting enzyme 2 (ACE2) in  
543 SARS coronavirus-induced lung injury. Nature medicine 2005, 11(8): 875-879.
- 544 52. Imai Yumiko, Kuba Keiji, Rao Shuan, Huan Yi, Guo Feng, Guan Bin, et al.  
545 Angiotensin-converting enzyme 2 protects from severe acute lung failure. Nature  
546 2005;436(7047):112-6.
- 547 53. Sarzani R, Giulietti F, Di PC, Giordano P, Spannella F. The Pathophysiology of  
548 COVID-19 and SARS-CoV-2 Infection: Disequilibrium between the classic renin-  
549 angiotensin system and its opposing arm in SARS-CoV-2-related lung injury.  
550 American Journal of Physiology-Lung Cellular and Molecular Physiology  
551 2020;319(2): L325.
- 552 54. Ravimohan S, Kornfeld H, Weissman D, Bisson GP. Tuberculosis and lung damage:  
553 from epidemiology to pathophysiology. European respiratory review: an official  
554 journal of the European Respiratory Society 2018; 27:147.
- 555 55. DiFazio RM, Mattila JT, Klein EC, Cirrincione LR, Howard M, Wong EA, et al.  
556 Active transforming growth factor-beta is associated with phenotypic changes in  
557 granulomas after drug treatment in pulmonary tuberculosis. Fibrogenesis &  
558 tissue repair 2016; 9:6.

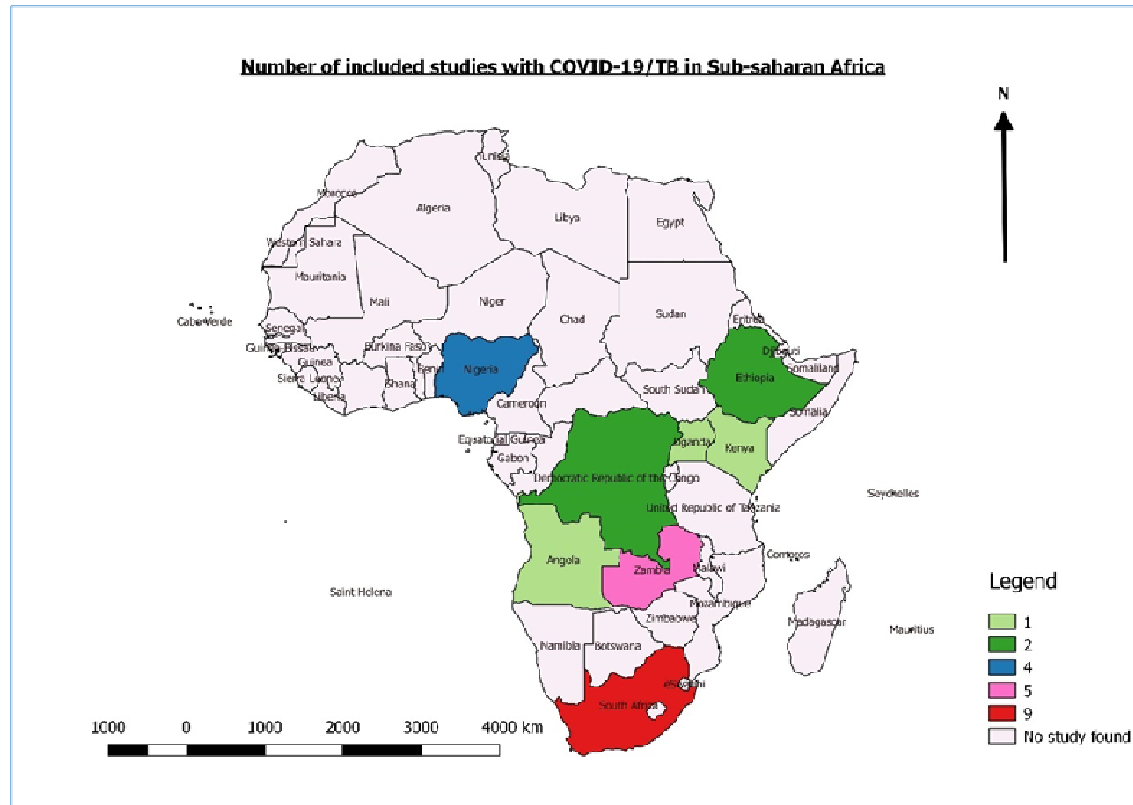


559           56. Strydom N, Gupta SV, Fox WS, Via LE, Bang H, Lee M, Eum S, Shim T, Barry CE  
560           3rd, Zimmerman M, Dartois V, Savic RM. Tuberculosis drugs' distribution and  
561           emergence of resistance in patient's lung lesions: A mechanistic model and tool for  
562           regimen and dose optimization. PLoS Med. 2019;16(4): e1002773.  
563

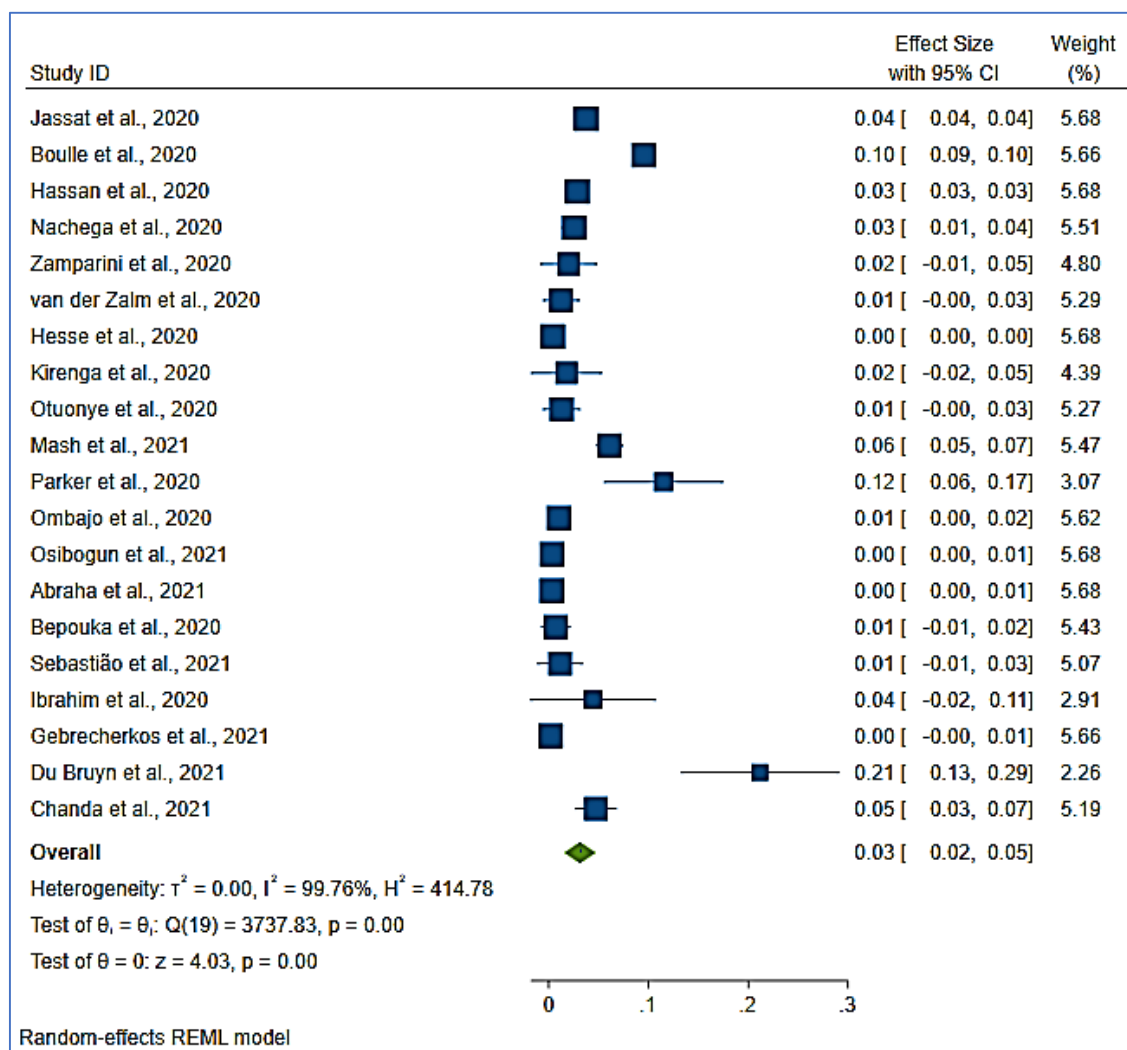




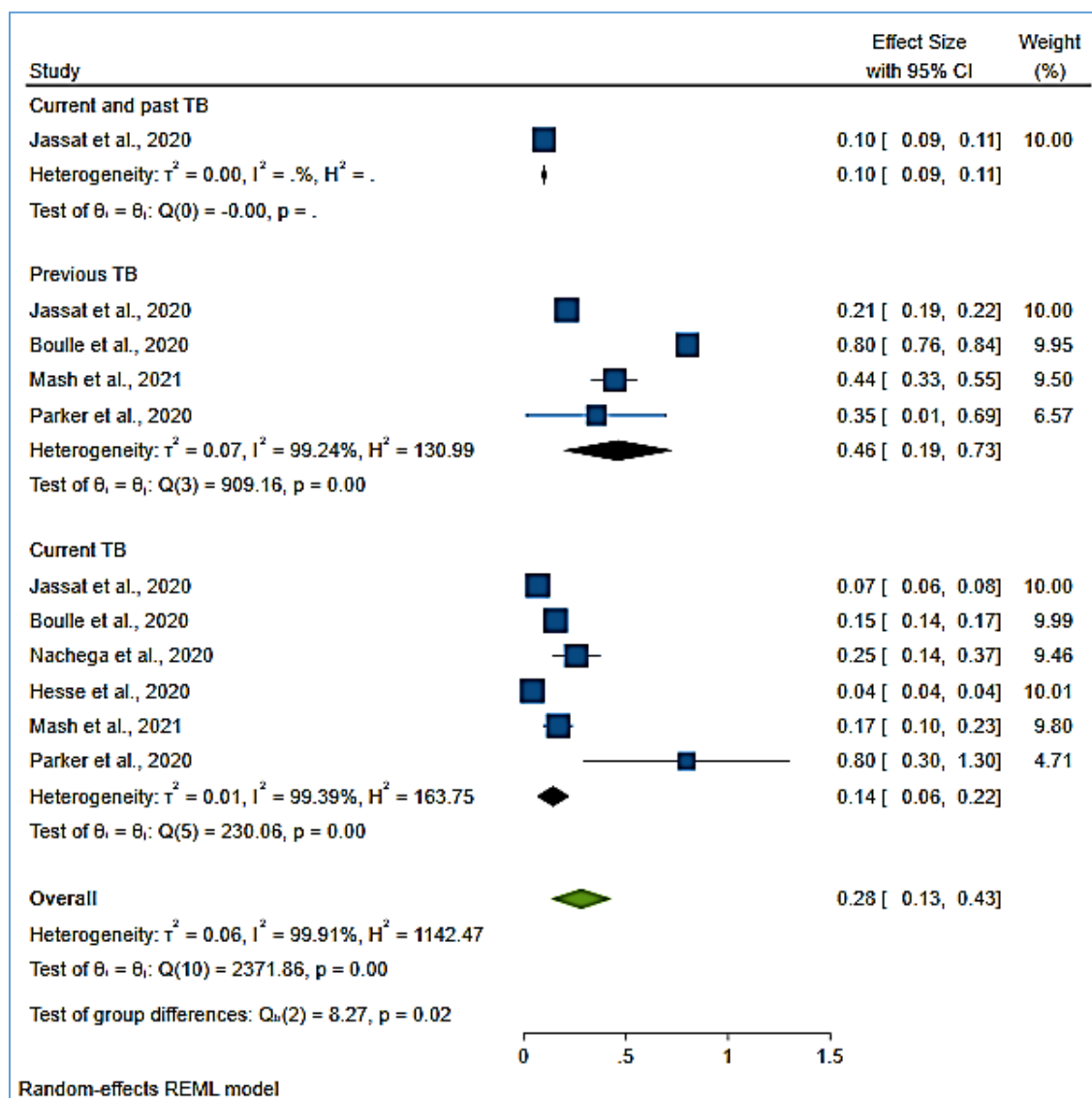
**Figure 1:** Flow chart of PTB incidence and mortality proportions associated to COVID-19 in Sub-Saharan Africa



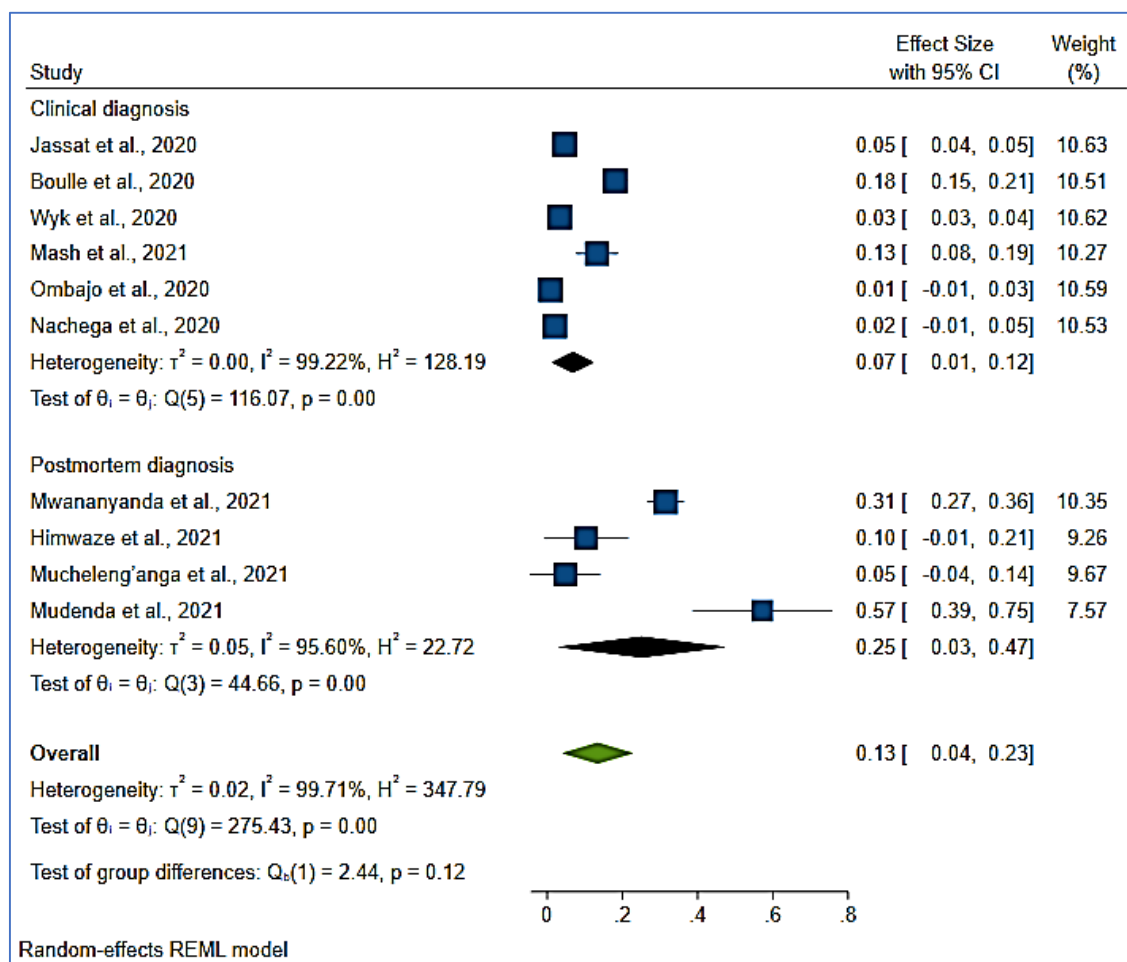
**Figure 2:** Distribution of included studies in Sub-Saharan African countries



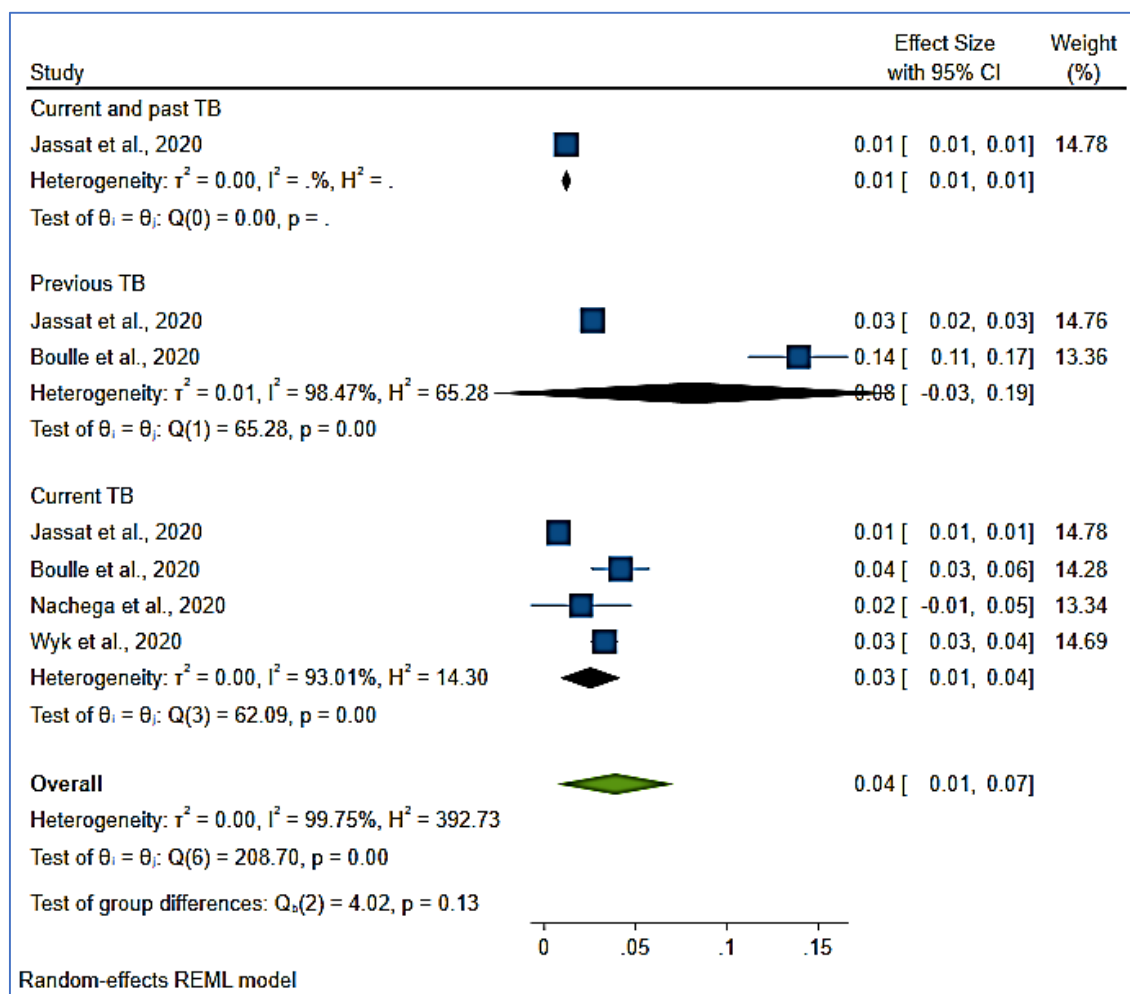
**Figure 3:** pooled incidence proportion of COVID-19 associated with PTB in sub-Saharan Africa



**Figure 4: pooled incidence proportion of COVID-19 associated with previous and current PTB**

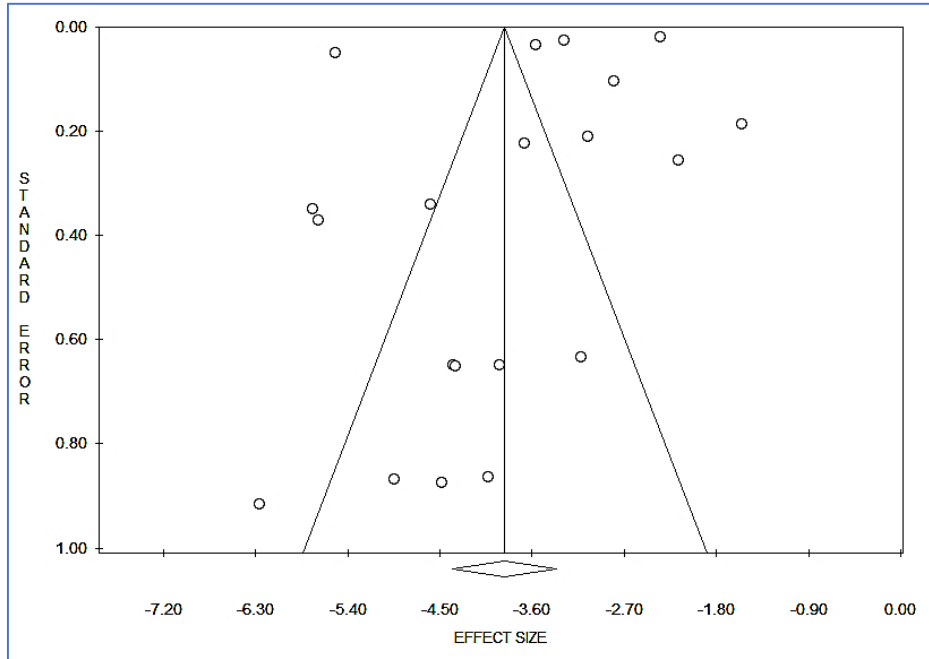


**Figure 5:** pooled case fatality rate of COVID-19 associated with PTB in sub-Saharan Africa



**Figure 6:** pooled case fatality rate of COVID-19 associated with current and previous PTB





**Figure 7:** Funnel plot of incidence proportion of COVID-19 associated with PTB in sub-Saharan Africa