

**Title:** Clinical outcomes among patients infected with Omicron (B.1.1.529) SARS-CoV-2 variant in southern California

**Authors:** Joseph A. Lewnard, PhD<sup>1,2,3,\*</sup>, Vennis X. Hong, MPH<sup>4</sup>, Manish M. Patel, MD<sup>5</sup>, Rebecca Kahn, PhD<sup>5</sup>, Marc Lipsitch, DPhil<sup>5</sup>, Sara Y. Tartof, PhD<sup>4,6,\*</sup>

**Affiliations:**

1. Division of Epidemiology, School of Public Health, University of California, Berkeley, Berkeley, California 94720, United States
2. Division of Infectious Diseases & Vaccinology, School of Public Health, University of California, Berkeley, Berkeley, California 94720, United States
3. Center for Computational Biology, College of Engineering, University of California, Berkeley, Berkeley, California 94720, United States
4. Department of Research & Evaluation, Kaiser Permanente Southern California, Pasadena, California 91101, United States
5. COVID-19 Response Team, Centers for Disease Control and Prevention, Atlanta, Georgia, 30329, United States
6. Department of Health Systems Science, Kaiser Permanente Bernard J. Tyson School of Medicine, Pasadena, California 91101, United States

\* Addresses for correspondence:

Joseph A. Lewnard  
2121 Berkeley Way  
Berkeley, California 94720  
jLewnard@berkeley.edu  
510-664-4050

Sara Y. Tartof  
100 South Los Robles  
Pasadena, California 91101  
Sara.Y.Tartof@kp.org  
626-564-3001

**Disclaimer:** The findings and conclusions in this report are those of the authors and do not necessarily represent the official position of the CDC.

## ABSTRACT

**Background:** The Omicron (B.1.1.529) variant of SARS-CoV-2 has rapidly achieved global dissemination, accounting for most infections in the United States by December 2021. Risk of severe outcomes associated with Omicron infections, as compared to earlier SARS-CoV-2 variants, remains unclear.

**Methods:** We analyzed clinical and epidemiologic data from cases testing positive for SARS-CoV-2 infection within the Kaiser Permanente Southern California healthcare system from November 30, 2021 to January 1, 2022, using S gene target failure (SGTF) as assessed by the ThermoFisher TaqPath ComboKit assay as a proxy for Omicron infection. We fit Cox proportional hazards models to compare time to any hospital admission and hospital admissions associated with new-onset respiratory symptoms, intensive care unit (ICU) admission, mechanical ventilation, and mortality among cases with Omicron and Delta (non-SGTF) variant infections. We fit parametric competing risk models to compare lengths of hospital stay among admitted cases with Omicron and Delta variant infections.

**Results:** Our analyses included 52,297 cases with SGTF (Omicron) and 16,982 cases with non-SGTF (Delta [B.1.617.2]) infections, respectively. Hospital admissions occurred among 235 (0.5%) and 222 (1.3%) of cases with Omicron and Delta variant infections, respectively. Among cases first tested in outpatient settings, the adjusted hazard ratios for any subsequent hospital admission and symptomatic hospital admission associated with Omicron variant infection were 0.48 (0.36-0.64) and 0.47 (0.35-0.62), respectively. Rates of ICU admission and mortality after an outpatient positive test were 0.26 (0.10-0.73) and 0.09 (0.01-0.75) fold as high among cases with Omicron variant infection as compared to cases with Delta variant infection. Zero cases with Omicron variant infection received mechanical ventilation, as compared to 11 cases with Delta variant infections throughout the period of follow-up (two-sided  $p < 0.001$ ). Median duration of hospital stay was 3.4 (2.8-4.1) days shorter for hospitalized cases with Omicron variant infections as compared to hospitalized patients with Delta variant infections, reflecting a 69.6% (64.0-74.5%) reduction in hospital length of stay.

**Conclusions:** During a period with mixed Delta and Omicron variant circulation, SARS-CoV-2 infections with presumed Omicron variant infection were associated with substantially reduced risk of severe clinical endpoints and shorter durations of hospital stay.

**Trial registration:** Not applicable

## INTRODUCTION

Following its first detection in Gauteng Province, South Africa, the Omicron (B.1.1.529) variant of severe acute respiratory syndrome coronavirus 2 (SARS-CoV-2) was declared by the World Health Organization (WHO) to be a variant of concern on November 25, 2021 [1]. Rapid transmission of the Omicron variant fueled a fourth wave of SARS-CoV-2 infections in South Africa, during which daily diagnosed infections exceeded totals recorded during all previous periods in the country. As of January 2022, the Omicron variant has achieved wide dissemination including in the United States, where 95% of all SARS-CoV-2 infections diagnosed during the week ending January 1, 2022 were estimated to be caused by the Omicron variant [2].

Understanding the potential for new SARS-CoV-2 variants to differ in clinical severity or in susceptibility to vaccine-derived immunity is crucial to inform public health responses. Such concerns are pronounced with the Omicron variant, which harbors a constellation of mutations in the spike protein associated with altered cell entry and immune evasion. Reduced neutralization of the Omicron variant has been reported in studies using plasma specimens from individuals with complete (two- or three-dose) mRNA vaccine series [3], and from patients with prior SARS-CoV-2 infection [4]. Epidemiologic data from South Africa have suggested higher rates of Omicron variant infections among persons with prior SARS-CoV-2 infection, as compared to observations with previous variants [5], while early observational studies have suggested reduced effectiveness of COVID-19 vaccines against Omicron variant infection [6–8]. However, increases in SARS-CoV-2 infections following emergence of the Omicron variant have not been associated with parallel increases in hospitalizations and deaths in the same proportions experienced during previous waves [9–11].

The first known Omicron variant infection in the United States was reported in California on December 1, 2021 [12], and by January 2, 2022 California experienced daily case totals surpassing those of all previous epidemic waves [13]. We undertook a prospective cohort study monitoring clinical outcomes among patients suspected to have infection due to the Omicron variant versus other variants on the basis of S gene target failure (SGTF) in reverse transcription polymerase chain reaction (RT-PCR) testing [14]. We compared risk of severe clinical outcomes among patients with or without SGTF infections, as well as epidemiologic characteristics of these patients, including their history of vaccination and prior SARS-CoV-2 infection.

## METHODS

### Setting

Kaiser Permanente of Southern California (KPSC) is an integrated, comprehensive healthcare organization serving 4.7 million members (~19% of the population of southern California) enrolled through employer-provided, prepaid, or federally sponsored insurance plans. Members of KPSC closely resemble the sociodemographic profile of the surrounding geographic area in terms of age, racial/ethnic composition, and community characteristics [15]. Care delivery including diagnoses, immunizations, and prescriptions across virtual, outpatient, emergency department, and inpatient settings is recorded in near real-time through patients' electronic health record (EHR), while out-of-network care is captured through insurance reimbursements. The study protocol was reviewed and approved by the KPSC institutional review board, which waived requirement for informed consent.

### Testing procedures

Polymerase chain reaction (PCR) testing for SARS-CoV-2 occurred in a variety of clinical settings within KPSC during the study period. A majority of tests conducted in outpatient settings are submitted to regional laboratories, where >90% of samples are processed using the ThermoFisher TaqPath COVID-19 Combo Kit. Samples collected in hospitals are processed by either these regional laboratories or by in-house hospital laboratories, which use the ThermoFisher TaqPath COVID-19 Combo Kit as well as the Roche cobas 8800 system for diagnostic testing. Previous evidence has indicated that the  $\Delta 69-70$  amino acid deletion in the spike (S) protein of Omicron variant specimens causes a failure in PCR probes targeting the S gene, whereas the Orf1ab and nucleocapsid (N) probes retain sensitivity; in contrast, SGTF is rare in Delta variant SARS-CoV-2 infections [7,9,14]. We therefore considered SGTF in RT-PCR-positive specimens processed using the ThermoFisher TaqPath COVID-19 Combo Kit to serve as a proxy for Omicron variant infections. We validated the concordance of SGTF with Omicron variant identification by tabulating the number of Omicron and non-Omicron variant infections identified over this period using whole genome sequencing and viral lineage designation among cases whose tests did or did not exhibit SGTF.

### Inclusion criteria and outcome measures

All KPSC members who received a positive SARS-CoV-2 reverse transcription-polymerase chain reaction (RT-PCR) test result from tests performed between 30 November, 2021 and 1 January, 2022, and processed using the ThermoFisher

TaqPath COVID-19 Combo Kit, were eligible for inclusion in the study. Individuals with a positive PCR test in the 90 days prior to the start of the study period were excluded.

As primary endpoints, we considered five markers of clinically severe illness: any hospital admission, hospital admission associated with new-onset acute respiratory symptoms, intensive care unit (ICU) admission, mechanical ventilation, and mortality. Hospitalizations and ICU admissions were considered to be COVID-19-related if they occurred between 7 days before to 28 days after the date of each patient's positive SARS-CoV-2 RT-PCR test. Symptomatic hospital admissions were those with acute respiratory infection symptoms beginning on or  $\leq 14$  days before the admission date; we ascertained presence of symptoms and dates of symptoms onset via natural language processing of open-text EHR fields including clinical notes and patient-provided questionnaire responses, which are submitted by all KPSC patients who seek SARS-CoV-2 testing regardless of test setting [16]. We considered new-onset respiratory symptoms following a positive test as a secondary endpoint for further exploratory analyses among cases who were asymptomatic at the time of their original test.

We recorded the first date that each study endpoint occurred, censoring observations at January 1, 2022 or patients' dates of disenrollment, whichever was earliest. Because our sample excluded a proportion of hospitalized cases who were tested using in-house assays other than the ThermoFisher TaqPath COVID-19 Combo Kit, our primary analyses addressed cases whose SARS-CoV-2 infections were first ascertained by outpatient testing. We additionally present results from analyses that included all cases tested using the ThermoFisher TaqPath COVID-19 Combo Kit, regardless of outpatient or inpatient test setting.

Last, for a duration-of-hospital-stay analysis, we recorded dates of discharge, in-hospital mortality, or censoring for all hospitalized patients. Patients who died in hospital or were discharged to hospice were considered to have experienced fatal COVID-19 hospitalizations, while patients discharged for any other reason were considered to have experienced non-fatal COVID-19 hospitalizations. Living patients who had not yet been discharged by January 1, 2022 were considered censored for the duration-of-stay analysis. Duration-of-stay analyses included all patients admitted to hospital whose samples were processed using the ThermoFisher TaqPath COVID-19 Combo Kit, regardless of outpatient or inpatient test setting.

## Exposures

Exposures of interest included demographic characteristics of patients (age, sex, race/ethnicity, and neighborhood-level median household income) as well as clinical risk factors recorded within the prior year (including history of smoking, body mass index, Charlson comorbidity index, and healthcare utilization across outpatient, emergency department, and inpatient settings). We additionally recorded patients' history of a positive SARS-CoV-2 test result of any type or COVID-19 diagnosis  $\geq 90$  days prior to their first positive RT-PCR test during the study period, as well as the dates of receipt of any COVID-19 vaccine doses (BNT162b2 [Pfizer/BioNTech], mRNA-1973 [Moderna/National Institutes of Health], or Ad.26.COV2.S [Janssen]). Patients' history of receipt of COVID-19 vaccines was obtained through patient's EHR or the California Immunization Registry. COVID-19 vaccines were provided at no cost to KPSC members following emergency use authorization and were therefore captured in the EHR. Vaccinations administered outside of KPSC were captured via the California Immunization Registry, to which providers are required to report all COVID-19 vaccine administrations within 24 hours.

## Statistical analysis

We compared times from the first positive test to each outcome event or censoring among patients who tested positive for SARS-CoV-2 by RT-PCR, with and without SGTF. We used Cox proportional hazards models to estimate the adjusted hazard ratio (aHR) for each endpoint associated with SGTF, adjusting for all demographic and clinical covariates listed above. We repeated analyses of the symptomatic hospital admission endpoint within subgroups defined by patient age, sex, Charlson comorbidity index, and history of documented SARS-CoV-2 infection and vaccination, controlling for all other risk factors via covariate adjustment. In secondary analyses that included patients tested in inpatient settings, times to events were recorded as 0.5 days for patients tested on or before the date of an outcome event occurring.

We conducted multiple ( $m=5$ ) imputation of missing covariate values and pooled results obtained with each imputed dataset via Rubin's rules [17]. We verified proportional hazards assumptions by testing for slopes in Schoenfeld residuals [18]. When hazard ratios could not be computed due to zero-valued event totals within either the SGTF or non-SGTF sample, we computed  $p$ -values to compare risk across groups via the binomial likelihood of observing zero cases under the null hypothesis of equal daily risk relative to the other sample.

We further compared lengths of stay among hospitalized patients with SGTF and non-SGTF infections. We fit Weibull distributions to patients' lengths of hospitalization via parametric competing risk models accommodating three outcomes of fatal, non-fatal, or censored discharge dispositions. We used these fitted distributions to compute differences in median

lengths of stay for patients hospitalized with SGTF and non-SGTF infections, conducting statistical inference via bootstrap resampling.

To compare demographic and clinical attributes of cases by variant type, we estimated adjusted odds ratios (aORs) of each exposure among cases with SGTF versus non-SGTF infections via logistic regression. We again pooled results across multiple imputed datasets. As a sensitivity check, we repeated analyses within the subgroup of patients who were continuously enrolled in KPSC health plans  $\geq 1$  year before the date of their first positive SARS-CoV-2 RT-PCR test during the study period.

We conducted all analyses using R (version 4.0.3; R Foundation for Statistical Computing, Vienna, Austria). We used the survival [19] and cfc [20] packages for time-to-event analyses, and the Amelia II [21] package for multiple imputation.

## RESULTS

Among plan members tested at KPSC between November 30, 2021 and January 1, 2022, there were 88,576 positive SARS-CoV-2 detections among individuals tested as outpatients, including 69,279 (78.2%) ascertained via the ThermoFisher TaqPath COVID-19 Combo Kit, enabling determination of SGTF. Among patients hospitalized during the study period with SARS-CoV-2 infection, 457 of 1,721 (26.6%) were tested using the ThermoFisher TaqPath COVID-19 Combo Kit. Of positive specimens tested via this assay, SGTF was identified in 52,297 (75.5% of 69,279), including 235 (51.4% of 457) patients tested in inpatient settings. Both the absolute number and the proportion of patients with SGTF results increased steadily over the study period, except during the week following the Christmas holiday on 25 December when both testing volumes and the proportion of samples processed by regional laboratories using the ThermoFisher TaqPath COVID-19 Combo Kit declined (**Figure 1**). Mean lengths of follow-up were 5.5 days for cases with SGTF infections and 15.8 days for cases with non-SGTF infections. Among 1,477 infected patients whose SARS-CoV-2 isolates were selected for sequencing over the study period, the Omicron variant was detected in all SGTF samples (382/382) and the Delta variant was detected in 1,092 of 1,095 non-SGTF samples (99.7%; **Table S1**), validating the interpretation of SARS-CoV-2 infections with and without SGTF as Omicron and Delta variant infections, respectively.

Over a total of 288,534 person-days of follow-up following an outpatient positive test, 88 patients with Omicron variant infections were admitted to hospital, as were 189 patients with Delta variant infections over 264,408 person-days of follow-up (**Figure 1**; **Figure 2**; **Table 1**). Onset of acute respiratory symptoms on or  $\leq 14$  days before hospital admission was recorded for 84 patients with Omicron variant infections (95.5% of 88) and 187 patients with Delta variant infections (98.9% of 189), who were thus classified as experiencing symptomatic hospitalizations (**Table S2**). Adjusted hazard ratios for hospital admission and symptomatic hospital admission associated with Omicron variant infection, relative to Delta variant infection, were 0.48 (95% confidence interval: 0.36-0.64) and 0.47 (0.35-0.62), respectively (**Table 1**; **Table S3**). Findings of reduced risk of symptomatic hospitalization in association with Omicron variant infection following outpatient positive tests held within subgroups defined by patient age, sex, Charlson comorbidity index, history of documented SARS-CoV-2 infection, and COVID-19 vaccination status (**Table S4**). Findings also held in subgroup analyses restricted to cases with  $\geq 1$  year of continuous enrollment prior to their testing date (**Table S5**). In analyses not restricted to cases who were first ascertained in outpatient settings, adjusted hazard ratios for any hospitalization and symptomatic hospitalization associated with Omicron variant infection were 0.72 (0.58-0.88) and 0.62 (0.49-0.77), respectively.

Among patients with Omicron variant infections, 7 received intensive care (including 5 whose infections were first identified in outpatient settings), 1 died, and none received mechanical ventilation, as compared to 23 ICU-admitted patients, 14 deceased patients, and 11 ventilated patients among those with Delta variant infections (**Table 1**). The observed number of patients meeting each of these endpoints was inadequate for multivariate analyses due to the absence of counts within multiple covariate strata. Unadjusted hazard ratios of ICU admission and mortality associated with Omicron variant infection were 0.26 (0.10-0.73) and 0.09 (0.01-0.75), respectively, among cases whose infections were first ascertained in outpatient settings. Additionally, the daily risk of mechanical ventilation among patients with Delta variant infections was significantly higher than among patients with Omicron variant infections (0.04 vs 0 per 1000 person-days at risk following a positive outpatient test; 2-sided  $p < 0.001$ ).

Acute respiratory symptoms were reported on or before testing dates for 79.7% of cases with Omicron variant infections first ascertained in outpatient settings (41,552/51,333) and 80.0% of cases with Delta variant infections first ascertained in outpatient settings (13,547/16,929; **Table S2**). Among cases without symptoms at the time of outpatient testing, new-onset respiratory symptoms during follow-up were reported for 991 (9.4% of 10,581) cases with Omicron variant infections and 553 (16.4% of 3,382) with Delta variant infections (aHR=0.69 [95% confidence interval: 0.62-0.77] for Omicron vs. Delta variant infections; **Table S6**).

By January 1, 2022, symptomatic hospitalizations were complete for 152 (83.5% of 182) hospitalized patients with Omicron variant infections and 168 (77.8% of 216) with Delta variant infections (**Table S7**). All patients with Omicron variant infections who completed hospitalizations by January 1 were discharged alive to home or home-based care, as

compared to 156 (92.9% of 168) patients with Delta variant infections (two-sided  $p < 0.001$ ). Among 154 Omicron variant-infected patients who completed hospitalization by January 1, 2022, 129 (83.8%) were discharged in  $\leq 2$  days, as compared to 52 (31.0% of 168) patients with Delta variant infections. Accounting for censoring in a parametric survival model, we estimated that the median duration of stay for patients with Omicron variant infections experiencing symptomatic hospitalizations was 1.5 (1.3-1.6) days, with 90% of patients expected to complete hospitalizations within 3.1 (2.7-3.6) days. Among symptomatic hospitalized patients with Delta variant infections, the estimated median duration of stay was 4.9 (4.3-5.6) days, representing a difference of 3.4 (2.8-4.1) days in median duration of stay from patients with Omicron variant infections (**Figure 3**). This difference corresponded to a 69.6% (64.0-74.5%) shorter median length of hospital stay among patients with Omicron variant infections as compared to patients with Delta variant infections.

As compared to cases with Delta variant infection, cases with Omicron variant infection had higher adjusted odds of being aged 20-29 and 30-39 years, and had lowest odds of being young children and older adults (**Figure 1; Table 2; Table S8**). Patients with Delta variant infection were more often white, resided in lower-income neighborhoods, and had greater burden of comorbid conditions. Similar patterns held when restricting comparisons to cases who had been enrolled in KPSC plans  $\geq 1$  year previously (**Table S9**).

Among cases first ascertained in outpatient settings, adjusted odds of documented prior SARS-CoV-2 infection  $\geq 90$  days before individuals' first positive test during the study period were 4.45 (3.24-6.12) fold higher among cases with Omicron variant infections than among cases with Delta variant infections (**Figure 1; Table 2**). Similarly, adjusted odds of prior receipt of each vaccine series (1, 2, or 3 doses of BNT162b2/mRNA-1973, or Ad.26.COVS with or without a booster dose of any vaccine) were higher among cases with Omicron as compared to Delta variant infections. In a model including interaction terms between documented prior SARS-CoV-2 infection and vaccination, the adjusted odds of prior infection were higher among cases with Omicron variant infections than cases with Delta variant infections within the vaccinated strata; adjusted odds of prior vaccination were also higher among cases with Omicron variant infections as compared to Delta variant infections, irrespective of prior documented SARS-CoV-2 infection (**Table S10**).

## DISCUSSION

Using data from a large, comprehensive healthcare system that captured information on SARS-CoV-2 testing and clinical outcomes among its members, and using SGTF as a proxy for Omicron versus non-Omicron (predominantly Delta) variant infections, we identified substantially reduced risk of severe clinical outcomes among patients with presumed Omicron variant infections. Within the subset of our cohort tested in outpatient settings, among whom prospective follow-up adverse outcomes was possible, Omicron variant infections were associated with 52%, 53%, 74%, and 91% reductions in risk of any subsequent hospitalization, symptomatic hospitalization, ICU admission, and mortality, relative to Delta variant infections. Median duration of hospital stay for patients admitted with symptomatic Omicron variant infections was approximately 70% (~3.4 days) shorter than that observed among patients with symptomatic Delta variant infections. Reductions in disease severity associated with Omicron variant infections were evident among both vaccinated and unvaccinated patients, and among those with or without documented prior SARS-CoV-2 infection. Prior vaccination against COVID-19 was associated with a dose-dependent lower risk of detection of the Delta variant as compared to the Omicron variant; likewise, Delta variant infections were less commonly detected among cases with documented prior SARS-CoV-2 infection.

Several lines of evidence support the hypothesis that the Omicron variant might have a lower propensity to result in severe illness as compared with the Delta variant. Consistency of the association of Omicron variant infection with reduced risk of hospitalization across age and comorbidity categories, and regardless of prior immunity from vaccination or SARS-CoV-2 infection, during the same month and in the same population, argues against host or behavioral factors as causes of the observed disease attenuation with the Omicron variant. Notably, the risk of symptomatic hospitalization was markedly reduced among cases who had tested positive for SARS-CoV-2 infection  $\geq 90$  days prior (0.32 vs 2.08 symptomatic hospitalizations per 1000 person-days at risk among cases with Omicron vs. Delta variant infections, respectively). Although ascertainment of SARS-CoV-2 infection history is imperfect because many infections may have gone untested or may not have been documented in a patient's EHR, prior infection among individuals with a history of a positive SARS-CoV-2 test result should be accurately coded and false positive PCR tests are rare. Thus, the finding of a reduction in severity of Omicron in patients with known prior infection is compelling evidence of an intrinsically less severe infection, rather than only different (more immune) persons becoming infected with the Omicron variant.

Several studies have found similar reductions in severity with infection from Omicron compared to infection from other SARS-CoV-2 variants. In other settings, estimated reductions in risk of hospitalization with Omicron variant infection have ranged from 20-80% [9-11,22,23]. Variability in estimates between studies is likely in part due to different definitions of the primary endpoint (e.g. any attendance at hospital, admission to hospital, or admission to hospital with symptoms at the time of testing), differing lengths of follow-up, as well as varying levels of vaccination and prior infection across populations. However, these findings collectively suggest that differences in viral factors between the Omicron and the Delta variants, such as differences in viral tropism or virulence factors, might be driving the observed relative reductions in

disease severity. Recent *ex vivo* studies demonstrate higher replication of the Omicron variant in the human upper respiratory tract as compared to the small airways of the lung [24], consistent with animal experiments suggesting that disease from infection with the Omicron variant might be confined to the large airway [25].

In this analysis, prevalence of prior vaccination differed among cases with Omicron and Delta variant infections. While our analysis cannot infer absolute vaccine effectiveness against the distinct variants, our findings suggest vaccine protection against infection with the Omicron variant may be lower than protection against infection with the Delta variant. This result is consistent with studies showing reduced neutralization efficiency of two and three doses of BNT162b2 vaccine against the Omicron variant (versus non-Omicron variants) [3,26]. Similarly, in multiple settings, vaccination with two doses showed slightly lower effectiveness against hospitalization with Omicron vs. Delta variant infections [6–8]. Our finding of higher relative protection against Delta variant infections is reassuring considering the greater severity observed in infections with the Delta variant as compared to the Omicron variant. However, evidence for a reduction in severe outcomes among vaccinated cases with both Delta and Omicron variant infections in our study (**Table S3**) suggests substantial public health benefits from continued COVID-19 vaccination.

Our study has certain limitations. While limited follow-up time was available for identifying hospitalizations of long duration, discharge dispositions were known for 84% of cases hospitalized with Omicron variant infections and 78% of those with Delta variant infections, providing a robust basis for time-to-event analyses. Incidental detections of SARS-CoV-2 among hospitalized patients might also have been more commonly associated with Omicron variant than Delta variant infections, leading to underestimates of attenuated disease severity in analyses of all hospitalizations. This consideration supports our use of EHR data on symptoms (assessed for all patients tested at KSPC) to define an endpoint of hospitalizations associated with acute respiratory symptoms, and our use of a prospective cohort design monitoring for new inpatient admissions among cases first ascertained by outpatient testing. This analytic framework also helped to mitigate bias that could result from exclusion of cases who were first tested using assays that would not identify SGTF, as such tests were used more often for patients tested in hospital settings. Follow-up was shorter for Omicron variant infections because these became most common near the end of the study period; use of a Cox proportional hazards model accounted for the resulting censoring. As access to testing may differ among KPSC members versus the general population, case-to-hospitalization ratios for Omicron and non-Omicron variant infections in our study may not hold at the population level. Differences in prevalence of prior infection and vaccination among KPSC members versus the general public may also impact transportability of effect size estimates from this study.

We have quantified two aspects of comparative severity of Omicron vs. Delta variant infections: the risk of progression to severe endpoints among diagnosed cases, and the risk of progression to acute respiratory symptoms among those first diagnosed before symptoms onset. While attenuation of disease severity in association with the Omicron variant is an encouraging finding, prior evidence of higher transmissibility of Omicron variant infections [27], as well as immune evasion from prior infection [28] and vaccination [6–8], are concerning. Rapid spread of the Omicron variant in a compressed time period has led to unprecedented surges in COVID-19 among our study population and others globally. High rates of infection in the community have overwhelmed health-care systems and could translate to high absolute numbers of hospitalizations and deaths, even with lower severity of the Omicron variant as compared to non-Omicron variants. Thus, implementation of concurrent prevention strategies including vaccination, masking, and appropriate infection mitigation strategies remains important to curb transmission, decrease morbidity and mortality, and reduce burden on health systems nationwide.

## REFERENCES

1. Update on Omicron variant. World Health Organization. Updated 26 November, 2021. Accessed 10 January, 2022. <https://www.who.int/news/item/28-11-2021-update-on-omicron>
2. COVID Data Tracker: Variant proportions. US Centers for Disease Control and Prevention. Updated 10 January, 2022. Accessed 10 January, 2022. <https://covid.cdc.gov/covid-data-tracker/#variant-proportions>
3. Nemet I, Kliker L, Lustig Y, Zuckerman N, Erster O, Cohen C, et al. Third BNT162b2 vaccination neutralization of SARS-CoV-2 omicron infection. *N Engl J Med* 2021; doi:10.1056/NEJMc2119358.
4. Schmidt F, Muecksch F, Weisblum Y, Da Silva J, Bednarski E, Cho A, et al. Plasma neutralization of the SARS-CoV-2 omicron variant. *N Engl J Med* 2021; doi:10.1056/NEJMc2119641.
5. Pulliam JRC, van Schalkwyk C, Govender N, von Gottberg A, Cohen C, Groome MJ, et al. Increased risk of SARS-CoV-2 reinfection associated with emergence of the Omicron variant in South Africa. *medRxiv* 2021; doi:10.1101/2021.11.11.21266068.

6. Collie S, Champion J, Moultrie H, Bekker L-G, Gray G. Effectiveness of BNT162b2 vaccine against Omicron Variant in South Africa. *N Engl J Med* 2021; doi:10.1056/NEJMc2119270.
7. Andrews N, Stowe J, Kirsebom F, Toffa S, Rickeard T, Gallagher E, et al. Effectiveness of COVID-19 vaccines against the Omicron (B.1.1.529) variant of concern. medRxiv. Cold Spring Harbor Laboratory Press; 2021; doi:10.1101/2021.12.14.21267615
8. Tseng HF, Ackerson BK, Luo Y, Sy LS, Talarico CA, et al. Effectiveness of mRNA-1273 against SARS-CoV-2 Omicron and Delta variants. medRxiv 2022; doi: 10.1101/2022.01.07.22268919.
9. Wolter N, Jassat W, Walaza S, Welch R, Moultrie H, Groome M, et al. Early assessment of the clinical severity of the SARS-CoV-2 Omicron variant in South Africa. medRxiv 2021; doi:10.1101/2021.12.21.21268116.
10. Ferguson N, Ghani A, Hinsley W, Volz E. Imperial College Report 50 : Hospitalisation risk for Omicron cases in England. Updated 22 December, 2021. Accessed 10 January, 2022. <https://www.imperial.ac.uk/mrc-global-infectious-disease-analysis/covid-19/report-50-severity-omicron/>
11. Sheikh A, Kerr S, Woolhouse M, McMenamin J, Robertson C. Severity of Omicron variant of concern and vaccine effectiveness against symptomatic disease: national cohort with nested test negative design study in Scotland. 2021. Accessed 10 January, 2022. [https://www.pure.ed.ac.uk/ws/portalfiles/portal/245818096/Severity\\_of\\_Omicron\\_variant\\_of\\_concern\\_and\\_vaccine\\_effectiveness\\_against\\_symptomatic\\_disease.pdf](https://www.pure.ed.ac.uk/ws/portalfiles/portal/245818096/Severity_of_Omicron_variant_of_concern_and_vaccine_effectiveness_against_symptomatic_disease.pdf)
12. First confirmed case of Omicron variant detected in the United States. US Centers for Disease Control and Prevention. Updated 1 December, 2021. Accessed 10 January, 2022. <https://www.cdc.gov/media/releases/2021/s1201-omicron-variant.htm>
13. Tracking COVID-19 in California - Coronavirus COVID-19 Response. California Department of Public Health. Updated 10 January, 2022. Accessed 10 January, 2022. <https://covid19.ca.gov/state-dashboard/>
14. Lesley S, Nei-yuan H, Sikhuline M, Lavanya S, Houriiyah T, Graeme D, et al. Track Omicron's spread with molecular data. *Science* 2021;374: 1454–1455. doi:10.1126/science.abn4543.
15. Koebnick C, Langer-Gould AM, Gould MK, Chao CR, Iyer RL, Smith N, et al. Sociodemographic characteristics of members of a large, integrated health care system: comparison with US Census Bureau data. *Perm J* 2012;16:37–41.
16. Tartof SY, Slezak JM, Fischer H, Hong V, Ackerson BK, Ranasinghe ON, et al. Effectiveness of mRNA BNT162b2 COVID-19 vaccine up to 6 months in a large integrated health system in the USA: a retrospective cohort study. *Lancet* 2021;398: 1407–1416.
17. Rubin DB. Multiple imputation after 18+ years. *J Am Stat Assoc* 1996;91: 473–489.
18. Schoenfeld D. Partial residuals for the proportional hazards regression model. *Biometrika* 1982;69:239–241.
19. Therneau TM. survival: A package for survival analysis in R. Updated 23 August, 2021. Accessed 10 January, 2022. <https://cran.r-project.org/web/packages/survival/vignettes/survival.pdf>
20. Mahani AS, Sharabiani MTA. Bayesian, and non-Bayesian, cause-specific competing-risk analysis for parametric and nonparametric survival functions: the R package CFC. *J Stat Softw.* 2019; doi:10.18637/jss.v089.i09.
21. Honaker J, King G, Blackwell M. Amelia II: A program for missing data. *J Stat Softw.* 2011; doi:10.18637/jss.v045.i07.
22. Wang L, Berger NA, Kaelber DC, Davis PB, Volkow ND, Xu R. Comparison of outcomes from COVID infection in pediatric and adult patients before and after the emergence of Omicron. medRxiv 2022; doi:10.1101/2021.12.30.21268495.
23. Ulloa AC, Buchan SA, Daneman N, Brown KA. Early estimates of SARS-CoV-2 Omicron variant severity based on a matched cohort study, Ontario, Canada. medRxiv 2022; doi:10.1101/2021.12.24.21268382.



24. Chan MCW, Hui KPY, Ho J, Cheung M-C, Ng K-C, Ching R, et al. SARS-CoV-2 Omicron variant replication in human respiratory tract ex vivo. *ResearchSquare* 2022; doi: 10.21203/rs.3.rs-1189219/v1.
25. Abdelnabi R, Foo CS-Y, Zhang X, Lemmens V, Maes P, Slechten B, et al. The Omicron (B.1.1.529) SARS-CoV-2 variant of concern does not readily infect Syrian hamsters. *bioRxiv* 2021; doi: 10.1101/2021.12.24.474086.
26. Garcia-Beltran WF, St Denis KJ, Hoelzemer A, Lam EC, Nitido AD, Sheehan ML, et al. mRNA-based COVID-19 vaccine boosters induce neutralizing immunity against SARS-CoV-2 Omicron variant. *medRxiv* 2021; doi:10.1101/2021.12.14.21267755.
27. Gozzi N, Chinazzi M, Davis JT, Mu K, Piontti AP, Vespignani A, et al. Preliminary modeling estimates of the relative transmissibility and immune escape of the Omicron SARS-CoV-2 variant of concern in South Africa. *medRxiv* 2022; doi:10.1101/2022.01.04.22268721.
28. Altarawneh H, Chemaitelly H, Tang P, Hasan MR, Qassim S, Ayoub HH, et al. Protection afforded by prior infection against SARS-CoV-2 reinfection with the Omicron variant. *medRxiv* 2022; doi:10.1101/2022.01.05.22268782.

## **ACKNOWLEDGMENTS**

This work was funded by the US Centers for Disease Control and Prevention.

**Table 1: Association of SGTF with adverse clinical outcomes.**

Outcome	Case population <sup>1</sup>	Cumulative events over observed follow-up ( <i>n</i> of events per 1000 cases)		Event rate per 1000 person-days observed ( <i>n</i> of events/person-days at risk)		Hazard ratio (95% CI)	
		No SGTF	SGTF	No SGTF	SGTF	Unadjusted	Adjusted
Any hospital admission	Cases tested in outpatient settings	189 (11.2)	88 (1.7)	0.71 (189/264,408)	0.30 (88/288,534)	0.32 (0.25, 0.42)	0.48 (0.36, 0.64)
	All cases	222 (13.1)	235 (4.5)	0.84 (222/264,424)	0.81 (235/288,608)	0.57 (0.47, 0.69)	0.72 (0.58, 0.88)
Symptomatic hospital admission	Cases tested in outpatient settings	187 (11.0)	84 (1.6)	0.71 (187/264,408)	0.29 (84/288,534)	0.31 (0.24, 0.41)	0.47 (0.35, 0.62)
	All cases	216 (12.7)	182 (3.5)	0.82 (216/264,424)	0.63 (182/288,608)	0.47 (0.38, 0.58)	0.62 (0.49, 0.77)
ICU admission <sup>2</sup>	Cases tested in outpatient settings	23 (1.4)	5 (0.1)	0.09 (23/266,778)	0.02 (5/288,694)	0.26 (0.10, 0.73)	--
	All cases	23 (1.4)	7 (0.1)	0.09 (23/267,378)	0.02 (7/289,617)	0.34 (0.14, 0.84)	--
Mechanical ventilation <sup>3</sup>	Cases tested in outpatient settings	11 (0.6)	0 (0.0)	0.04 (11/266,880)	0.00 (0/288,691)	--	--
	All cases	11 (0.6)	0 (0.0)	0.04 (11/267,480)	0.00 (0/289,631)	--	--
Death <sup>2</sup>	Cases tested in outpatient settings	14 (0.8)	1 (<0.1)	0.05 (14/266,844)	<0.01 (1/288,688)	0.09 (0.01, 0.75)	--
	All cases	14 (0.8)	1 (<0.1)	0.05 (14/267,444)	<0.01 (1/289,628)	0.09 (0.01, 0.75)	--

SGTF: S gene target failure, here interpreted as a proxy for SARS-CoV-2 Omicron variant infection (vs. Delta variant infection with non-SGTF samples); CI: confidence interval

<sup>1</sup>Sample sizes include 52,297 and 16,982 cases with and without SGTF, respectively, among whom 52,133 and 16,929 were tested in outpatient settings, respectively. We define symptomatic hospital admissions as those occurring among cases with respiratory symptom onset dates on or ≤14 days before the date of admission.

<sup>2</sup>Adjusted hazard ratios were not estimated due to limited observations within covariate strata.

<sup>3</sup>Unadjusted and adjusted hazard ratios were not estimated due to the absence of SGTF infections resulting in ventilation. The probabilities (*p*-values) of observing zero ventilated patients among all SGTF patients and among SGTF patients first tested in outpatient settings, under the null hypothesis of equal daily likelihood of ventilation among patients with and without SGTF, are equal to  $6.7 \times 10^{-6}$  and  $6.8 \times 10^{-6}$ , respectively.

**Table 2: Demographic and clinical characteristics of cases tested in outpatient settings with SGTF and non-SGTF SARS-CoV-2 infections.**

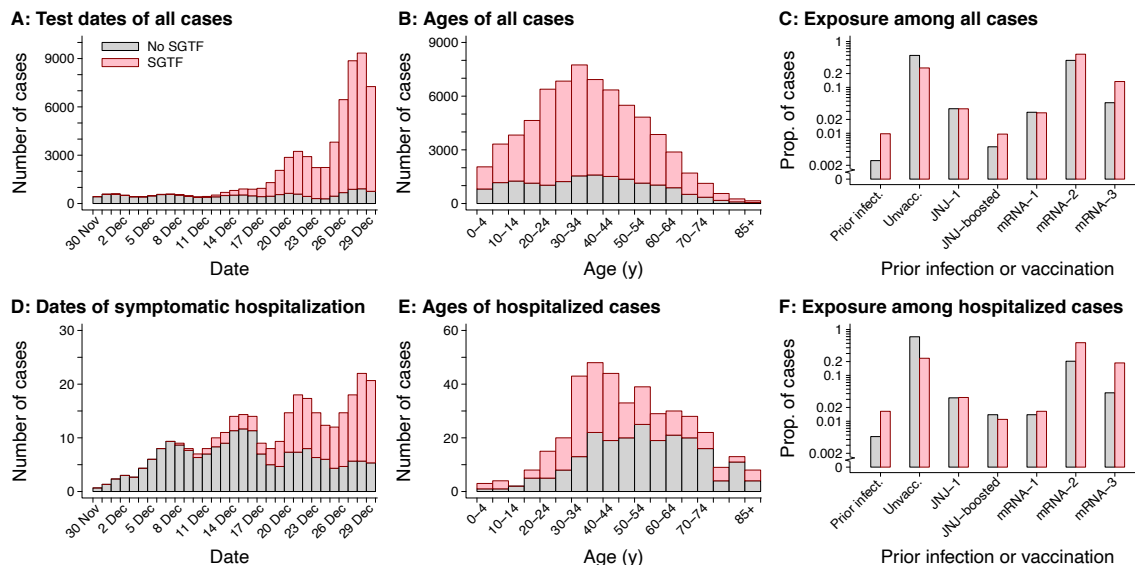
Characteristic	Number of cases (%)		Odds ratio (95% CI)	
	No SGTF N=16,929	SGTF N=52,133	Unadjusted	Adjusted
Age <sup>1</sup>				
<1 year	136 (0.8)	175 (0.3)	0.35 (0.28, 0.44)	0.56 (0.45, 0.71)
1-4 years	677 (4.0)	1,060 (2.0)	0.43 (0.38, 0.47)	0.77 (0.68, 0.87)
5-9 years	1,166 (6.9)	2,146 (4.1)	0.50 (0.46, 0.54)	0.93 (0.84, 1.03)
10-19 years	2,388 (14.2)	6,063 (11.7)	0.69 (0.65, 0.73)	0.86 (0.80, 0.92)
20-29 years	2,243 (13.3)	10,952 (21.1)	1.33 (1.25, 1.41)	1.38 (1.30, 1.47)
30-39 years	3,127 (18.6)	11,496 (22.2)	ref.	ref.
40-49 years	2,863 (17.0)	8,919 (17.2)	0.85 (0.80, 0.90)	0.79 (0.74, 0.84)
50-59 years	2,177 (12.9)	6,485 (12.5)	0.81 (0.76, 0.86)	0.69 (0.64, 0.73)
60-69 years	1,389 (8.2)	3,169 (6.1)	0.62 (0.58, 0.67)	0.48 (0.44, 0.52)
70-79 years	525 (3.1)	1,154 (2.2)	0.60 (0.54, 0.67)	0.40 (0.36, 0.46)
≥80 years	147 (0.9)	258 (0.5)	0.48 (0.39, 0.59)	0.32 (0.25, 0.41)
Sex				
Female	9,197 (54.3)	29,553 (56.7)	ref.	ref.
Male	7,732 (45.7)	22,580 (43.3)	0.91 (0.88, 0.94)	1.08 (1.04, 1.12)
Race/ethnicity				
White, non-Hispanic	5,309 (31.4)	12,701 (24.4)	ref.	ref.
Black, non-Hispanic	1,123 (6.6)	4,600 (8.8)	1.71 (1.59, 1.84)	1.85 (1.71, 2.00)
Hispanic	7,762 (6.6)	23,894 (45.8)	1.29 (1.24, 1.34)	1.26 (1.21, 1.32)
Asian/Pacific Islander	1,182 (7.0)	5,924 (11.4)	2.10 (1.95, 2.25)	1.71 (1.59, 1.84)
Other, mixed race, or unknown race	1,553 (9.2)	5,014 (9.6)	1.35 (1.26, 1.44)	1.42 (1.32, 1.52)
Community median income <sup>1</sup>				
<\$50,000	2,243 (13.4)	6,443 (12.5)	0.95 (0.90, 1.00)	0.92 (0.87, 0.97)
\$50,000-\$99,999	10,291 (61.4)	31,202 (60.5)	ref.	ref.
\$100,000-\$149,999	3,751 (22.4)	12,056 (23.4)	1.06 (1.02, 1.11)	1.08 (1.03, 1.13)
≥\$150,000	479 (2.9)	1,889 (3.7)	1.30 (1.17, 1.44)	1.30 (1.17, 1.45)
Cigarette smoking <sup>1</sup>				
Never smoker	10,224 (80.9)	32,227 (82.0)	ref.	ref.
Current smoker	559 (4.4)	1,659 (4.2)	0.94 (0.86, 1.04)	1.00 (0.91, 1.09)
Former smoker	1,852 (14.6)	5,408 (13.8)	0.93 (0.88, 0.98)	1.01 (0.95, 1.06)
Body mass index <sup>1</sup>				
Underweight (<18.5)	1,394 (11.2)	2,648 (7.0)	0.61 (0.57, 0.65)	0.95 (0.88, 1.03)
Normal weight (18.5-24.9)	2,964 (23.9)	10,028 (26.4)	ref.	ref.
Overweight (25.0-29.9)	3,416 (27.6)	11,019 (29.1)	0.96 (0.91, 1.01)	0.95 (0.90, 1.00)
Obese (≥30)	4,622 (37.3)	14,231 (37.5)	0.92 (0.88, 0.96)	0.92 (0.87, 0.96)
Healthcare utilization: outpatient visits				
0-4	9,164 (54.1)	20,141 (38.6)	ref.	ref.
5-9	3,575 (21.1)	14,708 (28.2)	1.87 (1.79, 1.96)	1.78 (1.70, 1.86)
10-14	1,711 (10.1)	7,296 (14.0)	1.94 (1.83, 2.06)	1.87 (1.75, 1.99)
15-19	912 (5.4)	3,899 (7.5)	1.95 (1.80, 2.10)	1.90 (1.75, 2.06)
≥20	1,567 (9.3)	6,089 (11.7)	1.77 (1.66, 1.88)	1.80 (1.67, 1.93)
Healthcare utilization: ED visits				
0	14,617 (86.3)	44,108 (84.6)	ref.	ref.
1	1,691 (10.0)	6,056 (11.6)	1.19 (1.12, 1.26)	1.12 (1.06, 1.19)
2	398 (2.4)	1,303 (2.5)	1.08 (0.97, 1.22)	0.98 (0.87, 1.11)
≥3	223 (1.3)	666 (1.3)	0.99 (0.86, 1.15)	0.93 (0.79, 1.10)
Healthcare utilization: inpatient admissions				
0	16,611 (98.1)	50,979 (97.8)	ref.	ref.
1	190 (1.1)	649 (1.2)	1.11 (0.95, 1.31)	0.95 (0.80, 1.12)
2	69 (0.4)	260 (0.5)	1.23 (0.94, 1.60)	1.03 (0.78, 1.36)
≥3	59 (0.3)	245 (0.5)	1.35 (1.02, 1.80)	1.15 (0.85, 1.55)
Charlson comorbidity index				
0	13,648 (80.6)	42,987 (82.5)	ref.	ref.
1-2	2,740 (16.2)	7,893 (15.1)	0.91 (0.87, 0.96)	0.78 (0.74, 0.82)
3-5	401 (2.4)	942 (1.8)	0.75 (0.66, 0.84)	0.64 (0.56, 0.74)
≥6	140 (0.8)	311 (0.6)	0.71 (0.58, 0.86)	0.62 (0.49, 0.78)
Prior SARS-CoV-2 infection <sup>3</sup>				
No documented previous infection	16,886 (99.7)	51,625 (99.0)	ref.	ref.
Documented previous infection	43 (0.3)	508 (1.0)	3.86 (2.83, 5.28)	4.45 (3.24, 6.12)
COVID-19 vaccination				
Unvaccinated	8,419 (49.7)	13,848 (26.6)	ref.	ref.
Ad.26.COV2.S—1 dose	582 (3.4)	1,782 (3.4)	1.86 (1.69, 2.05)	1.93 (1.74, 2.13)
Ad.26.COV2.S—with any booster dose	85 (0.5)	498 (1.0)	3.56 (2.83, 4.49)	3.76 (2.97, 4.76)
BNT162b2 or mRNA-1973—1 dose	486 (2.9)	1,454 (2.8)	1.82 (1.64, 2.02)	1.73 (1.55, 1.93)
BNT162b2 or mRNA-1973—2 doses	6,573 (38.8)	27,570 (52.9)	2.55 (2.45, 2.65)	2.43 (2.33, 2.54)
BNT162b2 or mRNA-1973—3 doses	784 (4.6)	6,981 (13.4)	5.41 (5.00, 5.86)	6.31 (5.79, 6.87)

A separate version of this table including all cases analyzed, regardless of test setting, is presented in **Table S8**. A version restricted to cases with ≥1 year of continuous enrollment prior to their test date is presented in **Table S9**. Data on history of both prior infection and vaccination among cases with SGTF and non-SGTF infections are presented in **Table S10**.

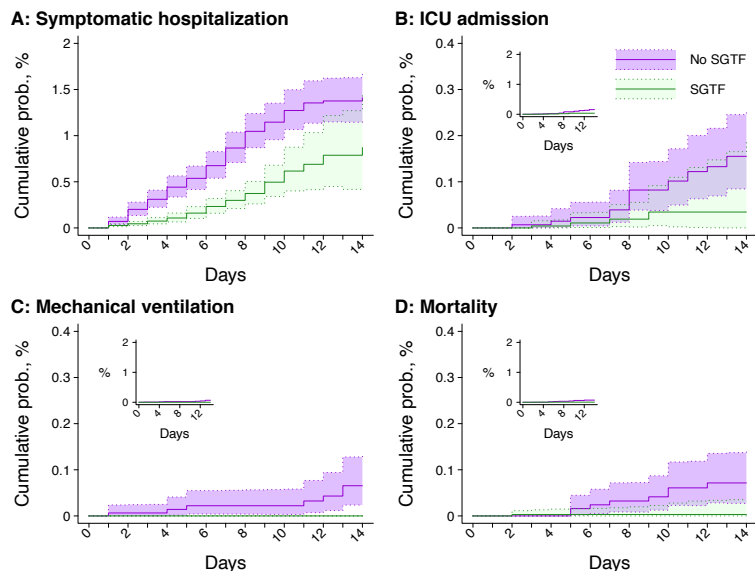
<sup>1</sup>Adjusted logistic regression models control for all variables listed.

<sup>2</sup>Multiple imputation was used to address missing data; numbers may not add to column totals where missing values occur. The number of missing observations is as follows for each applicable variable: age—91 (non-SGTF) and 257 (SGTF); community median household income—165 (non-SGTF) and 543 (SGTF); cigarette smoking—4,286 (non-SGTF) and 12,862 (SGTF); BMI—4,543 (non-SGTF) and 14,237 (SGTF).

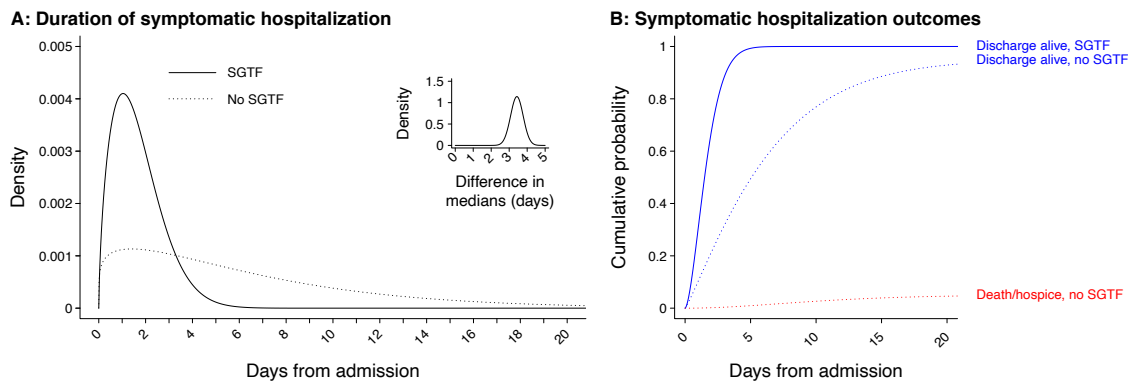
<sup>3</sup>Previous infection defined by any positive test result or diagnosis ≥90 days prior to the date of the current test.



**Figure 1: Attributes of cases with SGTF and non-SGTF samples detected.** Panels include (A) test dates for all cases analyzed (truncated at 29 December, 2022 to accommodate  $\pm 1$  day jittering); (B) age distribution of all cases analyzed; (C) exposure history (prior documented infection and vaccination) among all cases analyzed; (D) dates of symptomatic hospital admission (truncated at 29 December, 2022 to accommodate  $\pm 1$  day jittering); (E) age distribution of cases with symptomatic hospitalizations; and (F) exposure history (prior documented infection and vaccination) among cases with symptomatic hospitalizations. Pink and grey bars correspond to detections with and without SGTF (interpreted as a proxy for SARS-CoV-2 Omicron variant infection; **Table S1**), respectively. Totals correspond to samples processed on RT-PCR TaqPath COVID-19 High-Throughput Combo Kit and do not reflect all cases at KPSC.



**Figure 2: Times to severe outcomes among cases with SGTF and non-SGTF infections first detected in outpatient settings.** Panels include (A) symptomatic hospital admissions; (B) ICU admissions; (C) initiations of mechanical ventilation; and (D) mortality. Inset plots within each panel illustrate cumulative probabilities on the same y-axis scale as panel A. Shaded regions denote 95% confidence intervals. Green and violet correspond to detections with and without SGTF (interpreted as a proxy for SARS-CoV-2 Omicron variant infection; **Table S1**), respectively.



**Figure 3: Fitted durations of symptomatic hospitalization and times to survival or mortality among cases with SGTF and non-SGTF samples detected.** Panels include: **(A)** fitted distribution functions of the lengths of symptomatic hospitalizations for cases with SGTF and non-SGTF detections (with inset panel illustrating the distribution of the difference in median lengths of stay), and **(B)** fitted cumulative distribution function of times to death or discharge for symptomatic hospitalized patients with SGTF and non-SGTF infections. Weibull-distributed event times are fitted via parametric competing risk models accounting for right-censoring of lengths of stay for patients remaining in hospital. Solid and dotted lines correspond to detections with and without SGTF (interpreted as a proxy for SARS-CoV-2 Omicron variant infection; **Table S1**), respectively.

**Table S1: Concordance of SGTF infection status with Omicron or Delta variant detection.**

S gene detection	Variant detection		Predictive accuracy of proxy definition
	Delta (B.1.617.2)	Omicron (B.1.1.529)	
Detected (non-SGTF)	1092	3	99.7%
Not detected (SGTF)	0	382	100%

SGTF: S gene target failure.

**Table S2: Onset of acute respiratory symptoms on or before dates of testing and hospital admission.**

Case sample	Number of cases with symptom onset by indicated time (%)		Unadjusted risk ratio (95% CI)
	No SGTF	SGTF	
All cases—onset on or before testing date	<i>N</i> =16,982 13,592 (80.0)	<i>N</i> =52,297 41,660 (79.7)	1.00 (0.98, 1.01)
Cases tested in outpatient settings—onset on or before testing date	<i>N</i> =16,929 13,547 (80.0)	<i>N</i> =52,133 41,552 (79.7)	1.00 (0.98, 1.02)
Hospitalized cases—onset on or before hospital admission date	<i>N</i> =222 216 (97.3)	<i>N</i> =235 182 (77.4)	0.76 (0.50, 1.14)

SGTF: S gene target failure, here interpreted as a proxy for SARS-CoV-2 Omicron variant infection (vs. Delta variant infection with non-SGTF samples); CI: confidence interval.

Symptoms data were collected from free-text fields of patient EHRs, including data from clinical notes and from responses to questionnaires addressing symptoms in the 14 days before testing which all patients must complete to receive a test.



**Table S3: Predictors of symptomatic hospital admission among cases with SGTF infections and non-SGTF infections.**

Characteristic	Measure	Adjusted hazard ratio (95% CI)					
		All cases		Non-SGTF cases		SGTF cases	
		Cases tested in outpatient settings	Cases tested in any setting	Cases tested in outpatient settings	Cases tested in any setting	Cases tested in outpatient settings	Cases tested in any setting
Age	Per 1y increase	1.05 (1.04, 1.06)	1.04 (1.03, 1.05)	1.05 (1.04, 1.06)	1.05 (1.04, 1.06)	1.03 (1.02, 1.05)	1.02 (1.01, 1.03)
Sex	Female	ref.	ref.	ref.	ref.	ref.	ref.
	Male	1.26 (0.99, 1.60)	1.05 (0.86, 1.28)	1.48 (1.11, 1.99)	1.49 (1.13, 1.95)	0.89 (0.57, 1.40)	0.68 (0.50, 0.93)
Race/ethnicity	White	ref.	ref.	ref.	ref.	ref.	ref.
	Black	1.10 (0.69, 1.76)	1.38 (0.95, 1.99)	1.18 (0.63, 2.20)	1.17 (0.66, 2.10)	1.16 (0.55, 2.45)	1.70 (1.03, 2.81)
	Hispanic	1.59 (1.19, 2.13)	1.55 (1.21, 1.99)	1.95 (1.38, 2.74)	1.87 (1.36, 2.56)	1.09 (0.62, 1.92)	1.23 (0.83, 1.83)
	Asian/Pacific islander	2.12 (1.31, 3.45)	1.40 (0.91, 2.15)	2.34 (1.22, 4.51)	2.03 (1.09, 3.79)	1.98 (0.94, 4.20)	1.06 (0.58, 1.95)
	Other, mixed race, or unknown race	0.62 (0.30, 1.29)	0.88 (0.52, 1.48)	0.52 (0.19, 1.45)	0.44 (0.16, 1.20)	0.73 (0.25, 2.15)	1.29 (0.68, 2.45)
Community median income	Per log increase	0.88 (0.69, 1.13)	0.88 (0.72, 1.08)	0.98 (0.68, 1.42)	0.97 (0.69, 1.36)	0.81 (0.58, 1.12)	0.81 (0.64, 1.04)
Cigarette smoking	Never smoker	ref.	ref.	ref.	ref.	ref.	ref.
	Current smoker	0.65 (0.36, 1.15)	0.94 (0.58, 1.49)	0.32 (0.11, 0.80)	0.50 (0.23, 1.02)	1.78 (0.76, 4.00)	1.68 (0.91, 3.23)
	Former smoker	0.79 (0.57, 1.10)	0.89 (0.67, 1.17)	0.76 (0.51, 1.11)	0.80 (0.55, 1.14)	0.87 (0.45, 1.64)	1.00 (0.65, 1.53)
Body mass index	Per 1-unit increase	1.05 (1.03, 1.06)	1.03 (1.01, 1.04)	1.05 (1.03, 1.07)	1.04 (1.03, 1.06)	1.04 (1.01, 1.07)	1.01 (0.99, 1.03)
Healthcare utilization	Outpatient visits—per 1 visit increase	1.02 (1.01, 1.02)	1.02 (1.01, 1.02)	1.02 (1.02, 1.03)	1.02 (1.02, 1.03)	1.02 (1.01, 1.02)	1.02 (1.01, 1.02)
	ED visits—per 1 visit increase	1.16 (1.10, 1.22)	1.15 (1.10, 1.20)	1.16 (1.09, 1.24)	1.15 (1.08, 1.22)	1.13 (1.03, 1.24)	1.12 (1.05, 1.19)
	Inpatient admissions—per 1 admission increase	1.17 (1.12, 1.22)	1.22 (1.20, 1.25)	1.12 (1.05, 1.21)	1.17 (1.12, 1.21)	1.35 (1.24, 1.47)	1.36 (1.31, 1.41)
Charlson comorbidity index	Per 1-unit increase	1.11 (1.03, 1.19)	1.10 (1.03, 1.16)	1.10 (1.01, 1.19)	1.10 (1.02, 1.18)	1.01 (0.86, 1.20)	1.01 (0.91, 1.13)
Prior SARS-CoV-2 infection	No documented previous infection	ref.	ref.	ref.	ref.	ref.	ref.
	Documented previous infection	0.78 (0.19, 3.11)	1.02 (0.38, 2.75)	2.51 (0.35, 18.13)	2.00 (0.28, 14.45)	0.66 (0.09, 4.84)	1.33 (0.42, 4.24)
COVID-19 vaccination	Unvaccinated	ref.	ref.	ref.	ref.	ref.	ref.
	Ad.26.COVID.S—1 dose	0.24 (0.12, 0.48)	0.34 (0.19, 0.62)	0.22 (0.09, 0.54)	0.22 (0.09, 0.53)	0.30 (0.07, 1.26)	0.77 (0.33, 1.82)
	Ad.26.COVID.S—with any booster dose	0.37 (0.12, 1.15)	0.58 (0.24, 1.41)	0.97 (0.31, 3.05)	0.92 (0.29, 2.89)	—	0.83 (0.20, 3.46)
	BNT162b2 or mRNA-1973—1 dose	0.22 (0.07, 0.70)	0.38 (0.17, 0.86)	0.25 (0.06, 1.02)	0.34 (0.11, 1.08)	0.27 (0.04, 1.95)	0.66 (0.20, 2.15)
	BNT162b2 or mRNA-1973—2 doses	0.19 (0.14, 0.25)	0.35 (0.28, 0.44)	0.15 (0.10, 0.22)	0.22 (0.09, 0.53)	0.36 (0.22, 0.60)	0.85 (0.58, 1.24)
	BNT162b2 or mRNA-1973—3 doses	0.15 (0.09, 0.24)	0.30 (0.21, 0.43)	0.15 (0.07, 0.36)	0.21 (0.10, 0.42)	0.38 (0.19, 0.76)	0.88 (0.54, 1.45)

SGTF: S gene target failure, here interpreted as a proxy for SARS-CoV-2 Omicron variant infection (vs. Delta variant infection with non-SGTF samples); CI: confidence interval.

Estimates presented in this table represent the associations for which we controlled in primary analyses determining the association of SGTF with symptomatic hospitalization, as reported in **Table 1**.

**Table S4: Association of SGTF infection status with symptomatic hospitalization in various patient subgroups.**

Case population	Characteristic <sup>1</sup>	Cumulative events over observed follow-up, <i>n/N</i> (total per 1000 cases) <sup>2</sup>		Symptomatic hospitalization rate per 1000 person-days ( <i>n</i> of events/person-days at risk) <sup>2</sup>		Hazard ratio (95% CI)		
		No SGTF	SGTF	No SGTF	SGTF	Unadjusted	Adjusted	
Cases tested in outpatient settings								
Cases tested in outpatient settings	Age	0-17 years	6/3,945 (1.5)	2/7,841 (0.3)	0.09 (6/65,730)	0.05 (2/39,244)	0.70 (0.12, 3.97)	--
		18-39 years	37/5,792 (6.4)	42/24,051 (1.7)	0.42 (37/88,213)	0.30 (42/141,844)	0.58 (0.36, 0.93)	0.71 (0.43, 1.18)
		40-64 years	96/5,921 (16.2)	25/17,393 (1.4)	1.05 (96/91,266)	0.27 (25/92,908)	0.20 (0.12, 0.31)	0.26 (0.16, 0.42)
		≥65 years	48/1,180 (40.7)	15/2,592 (5.8)	2.66 (48/18,076)	1.18 (15/12,748)	0.29 (0.16, 0.54)	0.36 (0.19, 0.70)
	Sex	Female	89/9,197 (9.7)	51/29,553 (1.7)	0.63 (89/141,772)	0.31 (51/163,134)	0.37 (0.26, 0.53)	0.55 (0.37, 0.81)
		Male	98/7,732 (12.7)	33/22,580 (1.5)	0.80 (98/122,636)	0.26 (33/125,400)	0.25 (0.17, 0.38)	0.36 (0.23, 0.56)
	Charlson comorbidity index	0	92/13,648 (6.7)	54/42,987 (1.3)	0.43 (92/214,050)	0.22 (54/240,292)	0.42 (0.29, 0.60)	0.58 (0.40, 0.84)
		≥1	95/3,281 (29.0)	30/9,146 (3.3)	1.89 (95/50,358)	0.62 (30/48,242)	0.23 (0.15, 0.36)	0.31 (0.19, 0.49)
	Previous infection	No documented previous infection	186/16,886 (11.0)	83/51,625 (1.6)	0.70 (186/263,927)	0.29 (83/285,413)	0.31 (0.24, 0.41)	0.47 (0.35, 0.63)
		Documented previous infection	1/43 (23.3)	1/508 (2.0)	2.08 (1/481)	0.32 (1/3,121)	0.14 (0.01, 2.47)	--
	Vaccination	Unvaccinated	137/8,419 (16.3)	31/13,848 (2.2)	0.98 (137/139,709)	0.41 (31/75,168)	0.30 (0.20, 0.44)	0.36 (0.24, 0.54)
		1 dose	9/1,068 (8.4)	3/3,236 (0.9)	0.53 (9/16,916)	0.16 (3/18,602)	0.20 (0.05, 0.75)	0.32 (0.08, 1.22)
		2 doses	35/6,657 (5.3)	37/28,056 (1.3)	0.35 (35/99,332)	0.23 (37/158,125)	0.68 (0.41, 1.14)	0.78 (0.45, 1.37)
3 doses		6/785 (7.6)	13/6,993 (1.9)	0.71 (6/8,451)	0.35 (13/36,639)	0.40 (0.15, 1.08)	0.35 (0.12, 1.01)	
All cases								
All cases	Age	0-17 years	7/3,953 (1.8)	5/7,853 (0.6)	0.11 (7/65,732)	0.13 (5/39,250)	0.94 (0.26, 3.42)	--
		18-39 years	50/5,815 (8.6)	81/24,113 (3.4)	0.57 (50/88,220)	0.57 (81/141,871)	0.63 (0.43, 0.91)	0.59 (0.40, 0.89)
		40-64 years	104/5,934 (17.5)	71/17,463 (4.1)	1.14 (104/91,270)	0.76 (71/92,940)	0.41 (0.30, 0.57)	0.53 (0.38, 0.75)
		≥65 years	55/1,189 (46.3)	25/2,611 (9.6)	3.04 (55/18,080)	1.96 (25/12,756)	0.37 (0.22, 0.60)	0.42 (0.24, 0.73)
	Sex	Female	102/9,224 (11.1)	120/29,658 (4.0)	0.72 (102/141,780)	0.74 (120/163,183)	0.60 (0.45, 0.79)	0.73 (0.54, 0.98)
		Male	114/7,758 (14.7)	62/22,639 (2.7)	0.93 (114/122,644)	0.49 (62/125,424)	0.33 (0.24, 0.46)	0.46 (0.33, 0.66)
	Charlson comorbidity index	0	112/13,689 (8.2)	116/43,099 (2.7)	0.52 (112/214,061)	0.48 (116/240,341)	0.57 (0.43, 0.74)	0.65 (0.49, 0.87)
		≥1	104/3,293 (31.6)	66/9,198 (7.2)	2.06 (104/50,364)	1.37 (66/48,266)	0.40 (0.29, 0.55)	0.56 (0.40, 0.79)
	Previous infection	No documented previous infection	215/16,939 (12.7)	179/51,787 (3.5)	0.81 (215/263,944)	0.63 (179/285,486)	0.47 (0.38, 0.57)	0.62 (0.50, 0.77)
		Documented previous infection	1/43 (23.3)	3/510 (5.9)	2.08 (1/481)	0.96 (3/3,122)	0.34 (0.03, 3.46)	--
	Vaccination	Unvaccinated	150/8,449 (17.8)	43/13,874 (3.1)	1.07 (150/139,717)	0.57 (43/75,178)	0.33 (0.24, 0.47)	0.40 (0.28, 0.57)
		1 dose	10/1,069 (9.4)	9/3,245 (2.8)	0.59 (10/16,916)	0.48 (9/18,605)	0.44 (0.17, 1.10)	--
		2 doses	47/6,676 (7.0)	96/28,148 (3.4)	0.47 (47/99,338)	0.61 (96/158,168)	0.86 (0.58, 1.26)	0.91 (0.60, 1.36)
3 doses		9/788 (11.4)	34/7,030 (4.8)	1.06 (9/8,452)	0.93 (34/36,657)	0.54 (0.25, 1.15)	0.70 (0.30, 1.64)	

SGTF: S gene target failure, here interpreted as a proxy for SARS-CoV-2 Omicron variant infection (vs. Delta variant infection with non-SGTF samples); CI: confidence interval.

<sup>1</sup>Adjusted Cox proportional hazards models control for all variables listed in **Table 2**.

<sup>2</sup>Note that because lengths of follow-up differ between SGTF and non-SGTF cases, clinical risk periods over which cumulative events and event rates are summarized may differ between the two case populations.

<sup>3</sup>Adjusted hazard ratios were not estimated due to limited observations within covariate strata.

**Table S5: Association of SGTF infection status with adverse clinical outcomes, limiting analyses to cases with ≥1 year of continuous enrollment.**

Outcome	Case population <sup>1</sup>	Cumulative events over observed follow-up ( <i>n</i> of events per 1000 cases)		Event rate per 1000 person-days observed ( <i>n</i> of events/person-days at risk)		Hazard ratio (95% CI)	
		No SGTF	SGTF	No SGTF	SGTF	Unadjusted	Adjusted
Any hospital admission	Cases tested in outpatient settings	172 (11.6)	76 (1.7)	0.74 (172/233,310)	0.30 (76/250,226)	0.30 (0.23, 0.40)	0.46 (0.34, 0.63)
	All cases	199 (13.4)	209 (4.6)	0.85 (199/233,324)	0.84 (209/250,292)	0.56 (0.46, 0.69)	0.72 (0.58, 0.90)
Symptomatic hospital admission	Cases tested in outpatient settings	170 (11.5)	73 (1.6)	0.73 (170/233,310)	0.29 (73/250,226)	0.29 (0.22, 0.39)	0.44 (0.33, 0.60)
	All cases	194 (13.1)	163 (3.6)	0.83 (194/233,324)	0.65 (163/250,292)	0.46 (0.37, 0.58)	0.62 (0.49, 0.78)
ICU admission <sup>2</sup>	Cases tested in outpatient settings	20 (1.4)	4 (0.1)	0.08 (20/235,507)	0.02 (4/250,349)	0.24 (0.08, 0.76)	--
	All cases	20 (1.3)	6 (0.1)	0.08 (20/236,005)	0.02 (6/251,189)	0.33 (0.13, 0.90)	--
Mechanical ventilation <sup>3</sup>	Cases tested in outpatient settings	11 (0.7)	0 (0.0)	0.05 (11/235,576)	0.00 (0/250,346)	--	--
	All cases	11 (0.7)	0 (0.0)	0.05 (11/236,074)	0.00 (0/251,203)	--	--
Death <sup>2</sup>	Cases tested in outpatient settings	12 (0.8)	1 (<0.1)	0.05 (12/235,552)	<0.01 (1/250,343)	0.10 (0.01, 0.82)	--
	All cases	12 (0.8)	1 (<0.1)	0.05 (12/236,050)	<0.01 (1/251,200)	0.10 (0.01, 0.82)	--

SGTF: S gene target failure, here interpreted as a proxy for SARS-CoV-2 Omicron variant infection (vs. Delta variant infection with non-SGTF samples); CI: confidence interval

<sup>1</sup>Sample sizes include 45,712 and 14,848 cases with and without SGTF, respectively, among whom 45,569 and 14,804 were tested in outpatient settings, respectively. We define symptomatic hospital admissions as those occurring among cases with respiratory symptom onset dates on or ≤14 days before the date of admission.

<sup>2</sup>Adjusted hazard ratios were not estimated due to limited observations within covariate strata.

<sup>3</sup>Unadjusted and adjusted hazard ratios were not estimated due to the absence of SGTF infections resulting in ventilation.

**Table S6: Association of SGTF infection status with occurrence of respiratory symptoms, among cases without symptoms at the time of testing.**

Case population <sup>1</sup>	Cases with symptoms onset over observed follow-up, <i>n/N</i> (%) <sup>2</sup>		Cases with symptoms onset per 100 person-days observed ( <i>n</i> of events/person-days at risk) <sup>2</sup>		Hazard ratio (95% CI)	
	No SGTF	SGTF	No SGTF	SGTF	Unadjusted	Adjusted
Cases without symptoms at time of testing	555/3,386 (16.4)	1,008/10,633 (9.5)	1.2 (555/46,558)	1.9 (1,008/53,095)	0.74 (0.67, 0.82)	0.70 (0.62, 0.78)
Cases tested in outpatient settings, without symptoms at time of testing	553/3,382 (16.4)	991/10,581 (9.4)	1.2 (553/46,528)	1.9 (991/52,809)	0.73 (0.66, 0.81)	0.69 (0.62, 0.77)
Cases tested in hospital, without symptoms at time of testing <sup>3</sup>	2/4 (50.0)	14/49 (28.6)	6.7 (2/30)	5.1 (14/276)	0.54 (0.12, 2.44)	--

SGTF: S gene target failure, here interpreted as a proxy for SARS-CoV-2 Omicron variant infection (vs. Delta variant infection with non-SGTF samples); CI: confidence interval.

Symptoms data were collected from free-text fields of patient EHRs, including data from clinical notes and from responses to questionnaires addressing symptoms in the 14 days before testing which all patients must complete to receive a test.

<sup>1</sup>Sample sizes are indicated in each cell.

<sup>2</sup>Note that because lengths of follow-up differ between SGTF and non-SGTF cases, clinical risk periods over which cumulative events and event rates are summarized may differ between the two case populations.

<sup>3</sup>Adjusted hazard ratios were not estimated due to limited observations within covariate strata.

**Table S7: Disposition at completion of hospitalization among patients with completed hospital stays.**

Discharge disposition	All hospitalized cases			Symptomatic hospitalized cases		
	Number of patients (%)		<i>p</i> value <sup>1</sup>	Number of patients (%)		<i>p</i> value <sup>1</sup>
	No SGTF	SGTF		No SGTF	SGTF	
	<i>N</i> =174	<i>N</i> =205		<i>N</i> =168	<i>N</i> =152	
Home (self-care or home health)	162 (93.1)	205 (100.0)	4.3×10 <sup>-7</sup>	156 (92.9)	152 (100.0)	1.3×10 <sup>-5</sup>
Death or hospice care	8 (4.6)	0 (0.0)	6.5×10 <sup>-5</sup>	8 (4.8)	0 (0.0)	6.0×10 <sup>-4</sup>
SNF, Residential facility, or rehabilitation facility	1 (0.6)	0 (0.0)	0.31	1 (0.6)	0 (0.0)	0.40
Other acute inpatient hospital	3 (1.7)	0 (0.0)	0.028	3 (1.8)	0 (0.0)	0.065

SGTF: S gene target failure, here interpreted as a proxy for SARS-CoV-2 Omicron variant infection (vs. Delta variant infection with non-SGTF samples).

<sup>1</sup>*p* values indicate the probability of observing the indicated number of events among SGTF cases, based on a Binomial probability distribution parameterized by the total number of SGTF cases and the observed probability of each outcome among non-SGTF cases.

**Table S8: Demographic and clinical characteristics of all cases with SGTF infections and non-SGTF infections, regardless of test setting.**

Characteristic	Number of cases (%)		Odds ratio (95% CI)	
	No SGTF N=16,982	SGTF N=52,297	Unadjusted	Adjusted
Age				
<1 year	136 (0.8)	176 (0.3)	0.35 (0.28, 0.44)	0.57 (0.45, 0.72)
1-4 years	677 (4.0)	1,060 (2.0)	0.43 (0.38, 0.47)	0.77 (0.68, 0.87)
5-9 years	1,168 (6.9)	2,153 (4.1)	0.50 (0.46, 0.54)	0.93 (0.84, 1.03)
10-19 years	2,395 (14.2)	6,070 (11.7)	0.69 (0.65, 0.73)	0.86 (0.80, 0.92)
20-29 years	2,251 (13.3)	10,976 (21.1)	1.33 (1.25, 1.41)	1.38 (1.30, 1.47)
30-39 years	3,141 (18.6)	11,531 (22.2)	ref.	ref.
40-49 years	2,874 (17.0)	8,961 (17.2)	0.85 (0.80, 0.90)	0.79 (0.74, 0.84)
50-59 years	2,177 (12.9)	6,506 (12.5)	0.81 (0.76, 0.87)	0.69 (0.65, 0.74)
60-69 years	1,396 (8.3)	3,185 (6.1)	0.62 (0.58, 0.67)	0.48 (0.44, 0.52)
70-79 years	528 (3.1)	1,160 (2.2)	0.60 (0.54, 0.67)	0.40 (0.36, 0.46)
≥80 years	148 (0.9)	262 (0.5)	0.48 (0.39, 0.59)	0.33 (0.26, 0.41)
Sex				
Female	9,224 (54.3)	29,658 (56.7)	ref.	ref.
Male	7,758 (45.7)	22,639 (43.3)	0.91 (0.88, 0.94)	1.07 (1.03, 1.12)
Race/ethnicity				
White, non-Hispanic	5,327 (31.4)	12,735 (24.4)	ref.	ref.
Black, non-Hispanic	1,127 (6.6)	4,628 (8.8)	1.72 (1.60, 1.85)	1.85 (1.71, 2.00)
Hispanic	7,791 (45.9)	23,966 (45.8)	1.29 (1.23, 1.34)	1.27 (1.21, 1.32)
Asian/Pacific Islander	1,183 (7.0)	5,936 (11.4)	2.10 (1.96, 2.25)	1.71 (1.59, 1.85)
Other, mixed race, or unknown race	1,554 (9.2)	5,032 (9.6)	1.35 (1.27, 1.45)	1.42 (1.33, 1.53)
Community median income <sup>1</sup>				
<\$50,000	2,254 (13.4)	6,479 (12.5)	0.95 (0.90, 1.00)	0.92 (0.87, 0.97)
\$50,000-\$99,999	10,325 (61.4)	31,291 (60.5)	ref.	ref.
\$100,000-\$149,999	3,755 (22.3)	12,092 (23.4)	1.06 (1.02, 1.11)	1.08 (1.04, 1.14)
≥\$150,000	483 (2.9)	1,892 (3.7)	1.29 (1.17, 1.43)	1.29 (1.16, 1.44)
Cigarette smoking <sup>1</sup>				
Never smoker	10,275 (80.9)	32,335 (82.0)	ref.	ref.
Current smoker	563 (4.4)	1,666 (4.2)	0.94 (0.85, 1.04)	0.99 (0.91, 1.09)
Former smoker	1,858 (14.6)	5,434 (13.8)	0.93 (0.88, 0.98)	1.01 (0.95, 1.07)
Body mass index <sup>1</sup>				
Underweight (<18.5)	1,396 (11.2)	2,656 (7.0)	0.61 (0.57, 0.65)	0.95 (0.88, 1.03)
Normal weight (18.5-24.9)	2,973 (23.9)	10,071 (26.5)	ref.	ref.
Overweight (25.0-29.9)	3,432 (27.6)	11,055 (29.0)	0.96 (0.91, 1.01)	0.95 (0.90, 1.00)
Obese (≥30)	4,638 (37.3)	14,278 (37.5)	0.92 (0.88, 0.96)	0.91 (0.87, 0.96)
Healthcare utilization: outpatient visits				
0-4	9,187 (54.1)	20,179 (38.6)	ref.	ref.
5-9	3,587 (21.1)	14,740 (28.2)	1.87 (1.79, 1.95)	1.77 (1.69, 1.86)
10-14	1,715 (10.1)	7,319 (14.0)	1.94 (1.83, 2.06)	1.87 (1.75, 1.99)
15-19	915 (5.4)	3,919 (7.5)	1.95 (1.81, 2.10)	1.90 (1.75, 2.07)
≥20	1,578 (9.3)	6,140 (11.7)	1.77 (1.67, 1.88)	1.80 (1.68, 1.93)
Healthcare utilization: ED visits				
0	14,658 (86.3)	44,223 (84.6)	ref.	ref.
1	1,701 (10.0)	6,090 (11.6)	1.19 (1.12, 1.26)	1.12 (1.06, 1.19)
2	400 (2.4)	1,310 (2.5)	1.09 (0.97, 1.22)	0.98 (0.87, 1.11)
≥3	223 (1.3)	674 (1.3)	1.00 (0.86, 1.17)	0.94 (0.80, 1.11)
Healthcare utilization: inpatient admissions				
0	16,642 (98.0)	51,056 (97.6)	ref.	ref.
1	201 (1.2)	676 (1.3)	1.10 (0.94, 1.28)	0.93 (0.78, 1.09)
2	72 (0.4)	279 (0.5)	1.26 (0.97, 1.64)	1.04 (0.79, 1.37)
≥3	67 (0.4)	286 (0.5)	1.39 (1.07, 1.82)	1.16 (0.88, 1.530)
Charlson comorbidity index				
0	13,689 (80.6)	43,099 (82.4)	ref.	ref.
1-2	2,746 (16.2)	7,931 (15.2)	0.92 (0.87, 0.96)	0.78 (0.74, 0.82)
3-5	405 (2.4)	950 (1.8)	0.74 (0.66, 0.84)	0.64 (0.56, 0.74)
≥6	142 (0.8)	317 (0.6)	0.71 (0.58, 0.86)	0.62 (0.50, 0.78)
Prior SARS-CoV-2 infection				
No documented previous infection	16,939 (99.7)	51,787 (99.0)	ref.	ref.
Documented previous infection	43 (0.3)	510 (1.0)	3.88 (2.84, 5.30)	4.47 (3.26, 6.14)
COVID-19 vaccination				
Unvaccinated	8,449 (49.8)	13,874 (26.5)	ref.	ref.
Ad.26.COV2.S—1 dose	582 (3.4)	1,786 (3.4)	1.87 (1.70, 2.06)	1.94 (1.75, 2.14)
Ad.26.COV2.S—with any booster dose	86 (0.5)	501 (1.0)	3.55 (2.82, 4.47)	3.74 (2.95, 4.72)
BNT162b2 or mRNA-1973—1 dose	487 (2.9)	1,459 (2.8)	1.82 (1.64, 2.03)	1.74 (1.56, 1.94)
BNT162b2 or mRNA-1973—2 doses	6,592 (38.8)	27,659 (52.9)	2.56 (2.46, 2.65)	2.44 (2.34, 2.54)
BNT162b2 or mRNA-1973—3 doses	787 (4.6)	7,018 (13.4)	5.43 (5.02, 5.87)	6.33 (5.80, 6.90)

Multiple imputation was used to address missing data; numbers may not add to column totals where missing values occur. Total numbers of missing observations are as follows for the covariates analyzed—Age: 91 (no SGTF), 257 (SGTF); Community median income: 165 (no SGTF), 543 (SGTF); Cigarette smoking: 4,286 (no SGTF), 12,862 (SGTF); Body mass index: 4,543 (no SGTF), 14,237 (SGTF).

<sup>2</sup>Previous infection defined by any positive test result or diagnosis ≥90 days prior to the date of the current test.

**Table S9: Demographic and clinical characteristics of cases tested in outpatient settings with SGTF infections and non-SGTF infections, limiting analyses to cases with  $\geq 1$  year of continuous enrollment.**

Characteristic	Number of cases (%)		Odds ratio (95% CI)	
	No SGTF N=14,804	SGTF N=45,569	Unadjusted	Adjusted <sup>1</sup>
Age <sup>2</sup>				
<1 year	0 (0.0)	1 (<0.1)	--	--
1-4 years	589 (4.0)	939 (2.1)	0.44 (0.39, 0.49)	0.83 (0.72, 0.94)
5-9 years	1,086 (7.3)	1,977 (4.3)	0.50 (0.46, 0.55)	0.97 (0.87, 1.08)
10-19 years	2,190 (14.8)	5,625 (12.3)	0.71 (0.66, 0.76)	0.89 (0.83, 0.96)
20-29 years	1,807 (12.2)	8,967 (19.7)	1.37 (1.28, 1.47)	1.43 (1.33, 1.53)
30-39 years	2,670 (18.0)	9,665 (21.2)	ref.	ref.
40-49 years	2,553 (17.2)	8,071 (17.7)	0.87 (0.82, 0.93)	0.81 (0.76, 0.87)
50-59 years	1,966 (13.3)	6,003 (13.2)	0.84 (0.79, 0.90)	0.72 (0.67, 0.77)
60-69 years	1,289 (8.7)	2,943 (6.5)	0.63 (0.58, 0.68)	0.48 (0.44, 0.53)
70-79 years	511 (3.5)	1,123 (2.5)	0.61 (0.54, 0.68)	0.40 (0.35, 0.46)
$\geq 80$ years	143 (1.0)	255 (0.6)	0.49 (0.40, 0.61)	0.33 (0.26, 0.41)
Sex				
Female	8,025 (54.2)	25,883 (56.8)	ref.	ref.
Male	6,779 (45.8)	19,686 (43.2)	0.90 (0.87, 0.93)	1.08 (1.03, 1.12)
Race/ethnicity				
White, non-Hispanic	4,834 (32.7)	11,388 (25.0)	ref.	ref.
Black, non-Hispanic	982 (6.6)	4,123 (9.0)	1.78 (1.65, 1.93)	1.92 (1.77, 2.09)
Hispanic	6,896 (46.6)	21,349 (46.8)	1.31 (1.26, 1.37)	1.29 (1.23, 1.35)
Asian/Pacific Islander	1,053 (7.1)	5,362 (11.8)	2.16 (2.01, 2.33)	1.75 (1.62, 1.89)
Other, mixed race, or unknown race	1,039 (7.0)	3,347 (7.3)	1.37 (1.27, 1.48)	1.36 (1.25, 1.47)
Community median income <sup>2#</sup>				
<\$50,000	9,050 (61.2)	27,447 (60.3)	0.94 (0.88, 0.99)	0.91 (0.85, 0.96)
\$50,000-\$99,999	1,948 (13.2)	5,524 (12.1)	ref.	ref.
\$100,000-\$149,999	3,358 (22.7)	10,860 (23.9)	1.07 (1.02, 1.12)	1.09 (1.04, 1.15)
$\geq$ \$150,000	433 (2.9)	1,684 (3.7)	1.28 (1.15, 1.43)	1.28 (1.14, 1.44)
Cigarette smoking <sup>2</sup>				
Never smoker	9,192 (80.9)	29,007 (82.2)	ref.	ref.
Current smoker	477 (4.2)	1,368 (3.9)	0.91 (0.82, 1.01)	0.99 (0.90, 1.09)
Former smoker	1,690 (14.9)	4,906 (13.9)	0.92 (0.87, 0.98)	1.01 (0.95, 1.08)
Body mass index <sup>2</sup>				
Underweight (<18.5)	1,301 (11.7)	2,452 (7.2)	0.60 (0.56, 0.64)	0.94 (0.86, 1.02)
Normal weight (18.5-24.9)	2,647 (23.8)	8,962 (26.4)	ref.	ref.
Overweight (25.0-29.9)	3,080 (27.7)	9,839 (29.0)	0.95 (0.90, 1.01)	0.94 (0.89, 1.00)
Obese ( $\geq 30$ )	4,096 (36.8)	1,2706 (37.4)	0.92 (0.88, 0.97)	0.92 (0.87, 0.97)
Healthcare utilization: outpatient visits				
0-4	7,728 (52.2)	16,512 (36.2)	ref.	ref.
5-9	3,214 (21.7)	13,181 (28.9)	1.92 (1.83, 2.01)	1.80 (1.71, 1.89)
10-14	1,542 (10.4)	6,607 (14.5)	2.01 (1.89, 2.13)	1.89 (1.77, 2.02)
15-19	842 (5.7)	3,563 (7.8)	1.98 (1.83, 2.15)	1.90 (1.74, 2.08)
$\geq 20$	1,478 (10.0)	5,706 (12.5)	1.81 (1.70, 1.92)	1.83 (1.70, 1.97)
Healthcare utilization: ED visits				
0	12,680 (85.7)	38,387 (84.2)	ref.	ref.
1	1,556 (10.5)	5,411 (11.9)	1.15 (1.08, 1.22)	1.08 (1.02, 1.16)
2	361 (2.4)	1,165 (2.6)	1.07 (0.95, 1.20)	0.96 (0.84, 1.09)
$\geq 3$	207 (1.4)	606 (1.3)	0.97 (0.82, 1.13)	0.91 (0.76, 1.08)
Healthcare utilization: inpatient admissions				
0	14,511 (98.0)	44,523 (97.7)	ref.	ref.
1	177 (1.2)	590 (1.3)	1.09 (0.92, 1.29)	0.92 (0.76, 1.10)
2	64 (0.4)	232 (0.5)	1.18 (0.89, 1.56)	0.99 (0.74, 1.33)
$\geq 3$	52 (0.4)	224 (0.5)	1.40 (1.04, 1.90)	1.21 (0.88, 1.67)
Charlson comorbidity index				
0	11,769 (79.5)	37,168 (81.6)	ref.	ref.
1-2	2,518 (17.0)	7,197 (15.8)	0.91 (0.86, 0.95)	0.78 (0.73, 0.82)
3-5	383 (2.6)	903 (2.0)	0.75 (0.66, 0.84)	0.65 (0.57, 0.75)
$\geq 6$	134 (0.9)	301 (0.7)	0.71 (0.58, 0.87)	0.64 (0.51, 0.80)
Prior SARS-CoV-2 infection <sup>3</sup>				
No documented previous infection	14,767 (99.8)	45,119 (99.0)	ref.	ref.
Documented previous infection	37 (0.2)	450 (1.0)	3.98 (2.84, 5.57)	4.71 (3.35, 6.61)
COVID-19 vaccination				
Unvaccinated	7,270 (49.1)	11,688 (25.6)	ref.	ref.
Ad.26.COV2.S—1 dose	515 (3.5)	1,560 (3.4)	1.88 (1.70, 2.09)	1.98 (1.78, 2.21)
Ad.26.COV2.S—with any booster dose	68 (0.5)	445 (1.0)	4.07 (3.15, 5.26)	4.33 (3.34, 5.63)
BNT162b2 or mRNA-1973—1 dose	422 (2.9)	1,215 (2.7)	1.79 (1.60, 2.01)	1.72 (1.53, 1.93)
BNT162b2 or mRNA-1973—2 doses	5,821 (39.3)	24,315 (53.4)	2.60 (2.49, 2.71)	2.50 (2.39, 2.62)
BNT162b2 or mRNA-1973—3 doses	708 (4.8)	6,346 (13.9)	5.58 (5.13, 6.06)	6.62 (6.04, 7.25)

<sup>1</sup>Adjusted logistic regression models control for all variables listed.

<sup>2</sup>Multiple imputation was used to address missing data; numbers may not add to column totals where missing values occur, as clarified in the caption to **Table 2**.

<sup>3</sup>Previous infection defined by any positive test result or diagnosis  $\geq 90$  days prior to the date of the current test.

**Table S10: Combined history of documented SARS-CoV-2 infection and COVID-19 vaccination among cases with SGTF infections and non-SGTF infections.**

Vaccination history	History of prior infection	Number of cases (%)		Odds ratio (95% CI)	
		No SGTF N=16,929	SGTF N=52,133	Unadjusted	Adjusted <sup>1</sup>
Unvaccinated	No documented previous infection	8,394 (49.6)	13,579 (26.0)	ref.	ref.
	Documented previous infection	25 (0.1)	269 (0.5)	6.65 (4.40, 10.03)	5.79 (3.83, 8.75)
Ad.26.COV2.S—1 dose	No documented previous infection	582 (3.4)	1,758 (3.4)	1.87 (1.69, 2.06)	1.93 (1.74, 2.13)
	Documented previous infection <sup>3</sup>	0 (0.0)	24 (<0.1)	--	--
Ad.26.COV2.S—with any booster dose	No documented previous infection	84 (0.5)	494 (0.9)	3.64 (2.88, 4.59)	3.81 (3.01, 4.83)
	Documented previous infection	1 (<0.1)	4 (<0.1)	2.47 (0.28, 22.04)	1.52 (0.17, 13.89)
BNT162b2 or mRNA-1973—1 dose	No documented previous infection	484 (2.9)	1,438 (2.8)	1.84 (1.65, 2.04)	1.74 (1.56, 1.94)
	Documented previous infection	2 (<0.1)	16 (<0.1)	4.94 (1.14, 21.50)	3.48 (0.79, 15.30)
BNT162b2 or mRNA-1973—2 doses	No documented previous infection	6,560 (38.8)	27,398 (52.6)	2.58 (2.48, 2.68)	2.44 (2.34, 2.54)
	Documented previous infection	13 (0.1)	172 (0.3)	8.18 (4.65, 14.38)	6.86 (3.87, 12.14)
BNT162b2 or mRNA-1973—3 doses	No documented previous infection	782 (4.6)	6,958 (13.3)	5.50 (5.08, 5.95)	6.33 (5.81, 6.90)
	Documented previous infection	2 (<0.1)	23 (<0.1)	7.11 (1.67, 30.15)	8.30 (1.92, 35.77)

SGTF: S gene target failure, here interpreted as a proxy for SARS-CoV-2 Omicron variant infection (vs. Delta variant infection with non-SGTF samples); CI: confidence interval.

<sup>1</sup>Adjusted logistic regression models control for all variables listed in **Table 2**.

<sup>2</sup>Adjusted odds ratios were not estimated due to limited observations within covariate strata.