

Discordant SARS-CoV-2 PCR and Rapid Antigen Test Results When Infectious: A December 2021 Occupational Case Series

Blythe Adamson, PhD, MPH^{1,2,3}, Robby Sikka, MD¹, Anne L. Wyllie, PhD^{1,4},
Prem Preamsrit, MD, PhD^{1,5,6}

¹ COVID-19 Sports and Society Working Group, USA; ² Infectious Economics, LLC, New York, NY, USA; ³ The Comparative Health Outcomes, Policy and Economics Institute, School of Pharmacy, University of Washington, Seattle, WA, USA; ⁴ Yale School of Public Health, New Haven, CT, USA; ⁵ Mirimus Laboratories, Brooklyn, NY, USA; ⁶ State University of New York Downstate Medical Center, Brooklyn, NY, USA

Corresponding Author:

Blythe Adamson, PhD, MPH
Email: blythe@infectious-economics.com

Abstract

The performance of Covid-19 diagnostic tests must continue to be reassessed with new variants of concern. The objective of this study was to describe the discordance in saliva SARS-CoV-2 PCR and nasal rapid antigen test results during the early infectious period. We identified a high-risk occupational case cohort of 30 individuals with daily testing during an Omicron outbreak in December 2021. Based on viral load and transmissions confirmed through epidemiological investigation, most Omicron cases were infectious for several days before being detectable by rapid antigen tests.

Key words: SARS-CoV-2, Covid-19, Surveillance, Testing

Routine workplace Covid-19 surveillance testing has been key to reopening in-person businesses with job functions that have high-risk for SARS-CoV-2 transmission. Yet, the real world performance of Covid-19 diagnostic tests needs to be reassessed for each new variant of concern. The FDA recently updated guidance stating that antigen tests may be less sensitive for the detection of Omicron than previous SARS-CoV-2 variants.¹ However, laboratory experiments cannot fully replace clinical study evaluations using patient samples through the course of SARS-CoV-2 infection. Omicron has been shown to infect faster and more efficiently than Delta in human bronchus, but with less severe infection in lung,² translating to symptom increase of sore throats and decrease of loss of taste and smell, better detected by saliva than nasal swabs.³⁻⁵ To date, the viral dynamics and test performance in the Omicron early infection period have not been described in detail, as it requires cohorts receiving near daily testing to identify cases prior to symptom onset.

METHODS

This retrospective cohort study identified individuals in occupational safety programs who were diagnosed with Covid-19 between December 1-31, 2021 during Omicron outbreaks at five workplaces in New York, NY, Los Angeles, CA, and San Francisco, CA. The populations were fully vaccinated by employer mandate and highly boosted by choice. To isolate the window of acute infection, cases were included if they were receiving daily testing at the time of diagnosis, had paired SARS-CoV-2 quantitative reverse-transcriptase polymerase chain reaction (RT-qPCR) test results and rapid antigen test results on Day 0 or 1 relative to first positive specimen collection date and were excluded if missing a recent negative test. The primary outcome of interest was discordance between saliva PCR and nasal rapid antigen test results during the early period with viral load levels corresponding to infectious risk of transmission. A Kaplan Meier analysis was performed to estimate the median time from first PCR positive to first rapid antigen positive test result.

RESULTS

Among hundreds of workplace-detected Covid-19 cases in December 2021, we identified 30 individuals with 62 matched pairs of rapid antigen and positive PCR results from specimens collected at the same time. The S-gene dropout associated with Omicron was observed in 29 of 30 cases. Viral dynamics and discordance in test results are shown in Figure 1. Four cases were confirmed to have transmitted the virus between false-negative antigen tests, with saliva PCR cycle threshold (Ct) values between 23-28 for the N gene. On Days 0 and 1, all rapid antigen tests produced false-negative results, despite 28 of 30 pairs having infectious viral load within the range of confirmed Omicron transmissions in the cohort ($Ct < 29$). The median time from first positive PCR to first detectable antigen positive was 3 days (95% Confidence Interval: 2-NA). After infection was detected, a subgroup (n=5) who received daily saliva PCR, nasal swab PCR, and nasal swab rapid antigen testing showed viral load peaked in saliva 1-2 days before nasal tests (Supplemental Table 1). All individuals in the cohort developed symptoms within two days of the first PCR positive test.

DISCUSSION

We found that rapid antigen tests lagged in the ability to detect Covid-19 during an early period of disease when most individuals were infectious with Omicron and four transmissions were confirmed. The policy implication is that rapid antigen tests may not be as fit-for-purpose in routine workplace screening to prevent asymptomatic spread of Omicron, compared to prior variants,⁶ given the shorter time from exposure to infectiousness and lower infectious doses sufficient for transmission. These findings are consistent with population-level Omicron epidemiology studies showing shorter serial intervals between cases and faster rates of community spread. Despite the small numbers of individuals included in this study, the findings are uniquely valuable because of the early detection of Omicron infection in frequent workplace Covid-19 testing to prevent spread. In real-world antigen testing, the limit of detection was substantially lower than manufacturers have reported to the FDA based on laboratory validation.

Sources of Funding

No funding was received to support this study.

Potential Conflicts

BJA reports receiving consultancy fees for safety advising several workplaces included in this study; serving as an unpaid board member, SalivaDirect; being a paid employee of Flatiron Health, outside the submitted work. RS reports serving as an unpaid board member, SalivaDirect, outside of this work. ALW reports serving as an unpaid board member of SalivaDirect, outside of this work. PP reports being a paid employee of Mirimus Laboratory.

Acknowledgements

We thank the COVID-19 Sports and Society Working Group, workplace COVID Safety Managers, Harlan Krumholz, MD and Nathan Grubaugh, PhD from Yale University, and the operational team, including Charlene Speyer and Lisa Kussell from Infectious Economics.

References

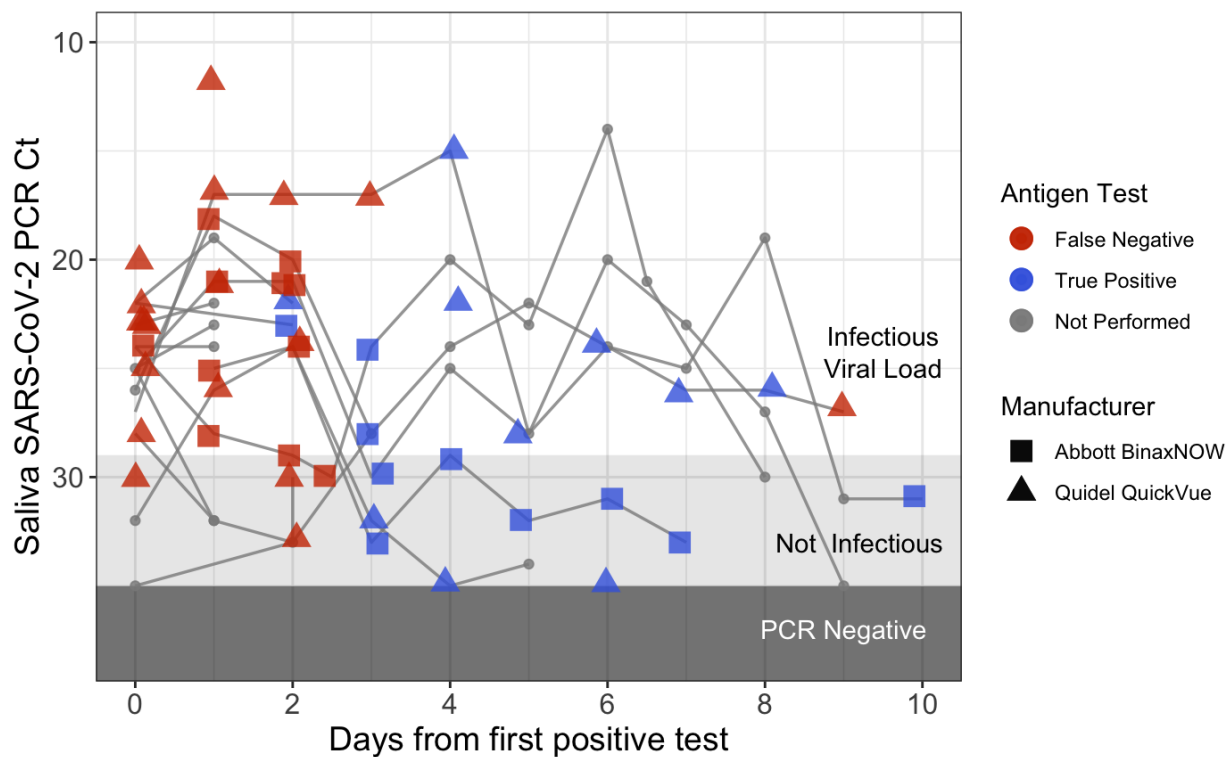
1. US Food and Drug Administration. FDA Omicron Variant Antigen test performance waning. “Omicron Variant: Impact on Antigen Diagnostic Tests (As of 12/28/2021)”
<https://www.fda.gov/medical-devices/coronavirus-covid-19-and-medical-devices/sars-cov-2-viral-mutations-impact-covid-19-tests#omicronvariantimpact>. Accessed December 31, 2021.
2. LKS Faculty of Medicine of The University of Hong Kong. HKUMed finds Omicron SARS-CoV-2 can infect faster and better than delta in human bronchus but with less severe infection in lung. 15 December 2021.
www.med.hku.hk/en/news/press/20211215-omicron-sars-cov-2-infection. Accessed December 31, 2021.
3. Teo AKJ, Choudhury Y, Tan IB, Cher CY, Chew SH, Wan ZY, Cheng LTE, Oon LLE, Tan MH, Chan KS, Hsu LY. Saliva is more sensitive than nasopharyngeal or nasal swabs for diagnosis of asymptomatic and mild COVID-19 infection. *Sci Rep.* 2021 Feb 4;11(1):3134. doi: 10.1038/s41598-021-82787-z. Erratum in: *Sci Rep.* 2021 Jun 9;11(1):12538. PMID: 33542443; PMCID: PMC7862309.
4. Wyllie AL, Fournier J, Casanovas-Massana A, Campbell M, Tokuyama M, Vijayakumar P, Warren JL, Geng B, Muenker MC, Moore AJ, Vogels CBF, Petrone ME, Ott IM, Lu P, Venkataraman A, Lu-Culligan A, Klein J, Earnest R, Simonov M, Datta R, Handoko R, Naushad N, Sewanan LR, Valdez J, White EB, Lapidus S, Kalinich CC, Jiang X, Kim DJ, Kudo E, Linehan M, Mao T, Moriyama M, Oh JE, Park A, Silva J, Song E, Takahashi T, Taura M, Weizman OE, Wong P, Yang Y, Bermejo S, Odio CD, Omer SB, Dela Cruz CS, Farhadian S, Martinello RA, Iwasaki A, Grubaugh ND, Ko AI. Saliva or Nasopharyngeal Swab Specimens for Detection of SARS-CoV-2. *N Engl J Med.* 2020 Sep 24;383(13):1283-1286. doi: 10.1056/NEJMc2016359. Epub 2020 Aug 28. PMID: 32857487; PMCID: PMC7484747.

5. Marais G, Hsiao NY, Iranzadeh A, Doolabh D, Enoch A, Chu CY, Williamson C, Brink A, Hardie D. Saliva swabs are the preferred sample for Omicron detection. medRxiv 2021.12.22.21268246; doi: <https://doi.org/10.1101/2021.12.22.21268246>. Accessed 4 Jan 2021.
6. Kissler SM, Fauver JR, Mack C, Olesen SW, Tai C, Shiue KY, Kalinich CC, Jednak S, Ott IM, Vogels CBF, Wohlgemuth J, Weisberger J, DiFiori J, Anderson DJ, Mancell J, Ho DD, Grubaugh ND, Grad YH. Viral dynamics of acute SARS-CoV-2 infection and applications to diagnostic and public health strategies. PLoS Biol. 2021 Jul 12;19(7):e3001333. doi: 10.1371/journal.pbio.3001333. PMID: 34252080; PMCID: PMC8297933.

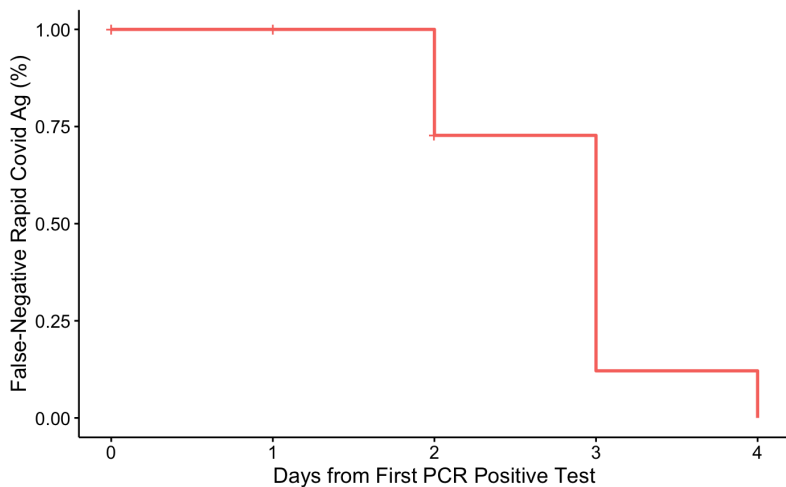
Figure 1. Discordance in PCR and Rapid Antigen Test Results

Shown are Cycle Threshold (Ct) counts and rapid antigen test results from paired samples of infected patients (Panel A). Also shown is the Kaplan Meier analysis of time from positive PCR to positive rapid antigen test (Panel B).

A)



B)



Supplementary Appendix

Study Design

The data reported here represent a convenience sample of employees at a selection of workplaces that partner with Infectious Economics LLC for Covid-19 prevention, including corporate offices, entertainment, retail trade, and manufacturing. The study period ran December 1, 2021 to December 31, 2021. Clinical samples were obtained by self-collection observed by a trained COVID Safety Manager. Employer-provided testing was preventatively provided to enable in-person workplace safety during times of high community prevalence and/or recent COVID exposures in the workplace. Because the sensitivity of tests may vary during the course of an infection, we evaluated concordance of PCR and rapid antigen test results in matched samples over time.

Study Oversight

In accordance with the guidelines, this work with de-identified samples was approved for research not involving human subjects by the SUNY Downstate Institutional Review Board & Privacy Board (1603504-6) under the title “Pilot program for instituting massive COVID19 surveillance screening in schools and the workplace.”

Data Availability and Code

All de-identified data and the code for analysis is available on GitHub at https://github.com/blythejane/covid_safety.

Covid-19 Testing and Sequencing

The rapid antigen tests kits used were Quidel QuickVue At-Home OTC COVID-19 Test and Abbott BinaxNOW COVID-19 Antigen Self-Test. PCR to detect SARS-CoV-2 RNA was the ThermoFisher

Combo Kit, allowing for the ability to detect an S-gene dropout. The time from specimen collection to results returned was <30 minutes for antigen tests and ranged 6-12 hours for PCR. A subset of specimens received whole genome sequencing in a broader epidemiology investigation of clusters to further improve workplace safety policies. Samples were classified as Omicron or Delta based on whole genome sequencing data, diagnostic PCR target failures, and sampling dates. In whole genome sequencing, RNA was extracted and confirmed as SARS-CoV- 2 positive by RT-qPCR with the Thermo Fisher TaqPath SARS-CoV-2 assay. Next Generation Sequencing with the Illumina COVIDSeq ARTIC primer set2 was used for viral amplification.

Outcomes

The primary outcome of interest was concordance between PCR and rapid antigen test results, dependent on time and Ct values corresponding to infectiousness. We defined the index as the specimen collection date for the first PCR test with detectable SARS-CoV-2 with Ct <35, the event being the first positive rapid antigen test result, and censoring at the most recent antigen test date. Based on observed transmission events in these workplaces that were confirmed by contact tracing and genomic epidemiology investigation, we defined infectious viral load as corresponding to Ct values <29 in this analysis.

Statistical analysis

A Kaplan Meier analysis was performed to estimate the median time from PCR positive to rapid antigen positive and time-dependent probability of a false negative rapid antigen test. We defined the index as the specimen collection date for the first PCR test with detectable SARS-CoV-2 with Ct <35, the event being the first positive rapid antigen test result, and censoring at the most recent antigen test date. Analyses were conducted in R 4.1.2.

Supplementary Table 1. Covid-19 cases with discordant test results from paired PCR and antigen tests in workplace safety programs

Case	Day	PCR & Antigen Aligned	INDICATOR		Ct Saliva	Ct Nasal	PCR Result	Rapid Antigen Result	ANTIGEN TEST		Rapid Molecular Result	RAPID MOLECULAR	
			Infectious (Ct <29)	High Risk Flag**					Manufacturer of Antigen Test	Manufacturer of Rapid Molecular Test			
A	0						Positive						
A	1	FALSE	TRUE	TRUE	12		Positive	Negative	Quidel QuickVue				
B	-2		FALSE				Negative						
B	-1									Negative		Lucira Check-It	
B	0	FALSE	TRUE	TRUE	27		Positive	Negative	Abbott BinaxNOW	Positive		Cue COVID-19	
B	1	FALSE	TRUE	TRUE	17		Positive	Negative	Quidel QuickVue				
B	2	FALSE	TRUE	TRUE	17		Positive	Negative	Quidel QuickVue				
B	3	FALSE	TRUE	TRUE	17		Positive	Negative	Quidel QuickVue				
B	4	TRUE	TRUE	FALSE	15		Positive	Positive	Quidel QuickVue				
B	5	TRUE	TRUE	FALSE	28		Positive	Positive	Quidel QuickVue				
B	6	TRUE	TRUE	FALSE	24		Positive	Positive	Quidel QuickVue				
B	7	TRUE	TRUE	FALSE	26		Positive	Positive	Quidel QuickVue				
B	8	TRUE	TRUE	FALSE	26		Positive	Positive	Quidel QuickVue				
B	9	FALSE	TRUE	TRUE	27		Positive	Negative	Quidel QuickVue				
C	0		TRUE		26		Positive						
C	1	FALSE	TRUE	TRUE	18	32	Positive	Negative	Abbott BinaxNOW				
C	2	FALSE	TRUE	TRUE	20	31	Positive	Negative	Abbott BinaxNOW				
C	3	TRUE	TRUE	FALSE	28	27	Positive	Positive	Abbott BinaxNOW				
C	4	TRUE	TRUE		24	23	Positive						
C	5	TRUE	TRUE		22	18	Positive						
C	6	TRUE	TRUE		24	16	Positive						
C	7	TRUE	TRUE		25	24	Positive						
C	8	TRUE	TRUE		19	20	Positive						

C	9	TRUE	TRUE		31	28	Positive					
C	10	TRUE	FALSE	FALSE	31	27	Positive	Positive	Abbott BinaxNOW			
D	-1							Negative	Quidel QuickVue			
D	0	FALSE	TRUE	TRUE	20		Positive	Negative	Quidel QuickVue			
E*	-1							Negative	Quidel QuickVue			
E*	0	FALSE	TRUE	TRUE	20		Positive	Negative	Quidel QuickVue			
F	-1		FALSE							Negative	Lucira Check-It	
F	0							Negative	Quidel QuickVue	Positive	Lucira Check-It	
F	1	FALSE	TRUE	TRUE	21		Positive	Negative	Quidel QuickVue			
F	2		TRUE					Positive	Quidel QuickVue			
F	4	TRUE	TRUE	FALSE	22		Positive	Positive	Quidel QuickVue			
F	5	FALSE	FALSE	FALSE			Negative	Positive	Quidel QuickVue			
F	6	TRUE	FALSE	FALSE	35		Positive	Positive	Quidel QuickVue			
F	8							Negative	Quidel QuickVue	Positive	Lucira Check-It	
G	-1		FALSE							Negative	Lucira Check-It	
G	0									Positive	Lucira Check-It	
G	2	FALSE	TRUE	TRUE	21		Positive	Negative	Abbott BinaxNOW	Positive	Cue COVID-19	
H*	0		TRUE		25		Positive					
H*	1	FALSE	TRUE	TRUE	21	34	Positive	Negative	Abbott BinaxNOW			
H*	2	FALSE	TRUE	TRUE	21	29	Positive	Negative	Abbott BinaxNOW			
H*	3	TRUE	FALSE	FALSE	30	23	Positive	Positive	Abbott BinaxNOW			
H*	4		TRUE		25	13	Positive					
H*	5		TRUE		28	15	Positive					
H*	6		TRUE		20	20	Positive					
H*	7		TRUE		23	25	Positive					
H*	8		TRUE		27	29	Positive					
H*	9		FALSE		35	31	Negative					

H*	10	TRUE	FALSE	FALSE		34	Negative	Negative	Abbott BinaxNOW		
I	0	FALSE	TRUE	TRUE	21		Positive	Negative	Quidel QuickVue		
J	-3	TRUE	FALSE	FALSE			Negative	Negative	Quidel QuickVue		
J	0	FALSE	TRUE	TRUE	22		Positive	Negative	Quidel QuickVue	Positive	Abbott ID NOW
J	1		TRUE		19		Positive				
J	2	TRUE	TRUE	FALSE	22		Positive	Positive	Quidel QuickVue		
K	-1							Negative	Quidel QuickVue		
K	0	FALSE	TRUE	TRUE	22		Positive	Negative	Quidel QuickVue		
K	2	TRUE	TRUE	FALSE	23		Positive	Positive	Abbott BinaxNOW	Positive	Lucira Check-It
L	-3		FALSE				Negative				
L	0	FALSE	TRUE	TRUE	23		Positive	Negative	Quidel QuickVue		
L	4		FALSE				Negative				
M	0	FALSE	TRUE	TRUE	23		Positive	Negative	Quidel QuickVue		
N*	-1							Negative	Quidel QuickVue		
N*	0	FALSE	TRUE	TRUE	23		Positive	Negative	Quidel QuickVue		
N*	1		TRUE		22		Positive			Positive	Lucira Check-It
O	0	FALSE	TRUE	TRUE	23		Positive	Negative	Quidel QuickVue		
P	0	FALSE	TRUE	TRUE	24		Positive	Negative	Abbott BinaxNOW		
P	1	FALSE	TRUE	TRUE	28	29	Positive	Negative	Abbott BinaxNOW		
P	2	FALSE	FALSE	TRUE	29	28	Positive	Negative	Abbott BinaxNOW		
P	2.5	FALSE	FALSE	TRUE	30	25	Positive	Negative	Abbott BinaxNOW		
P	3	TRUE	TRUE	FALSE	24	22	Positive	Positive	Abbott BinaxNOW		
P	4		TRUE		20	26	Positive				
P	5		TRUE		23	15	Positive				
P	6		TRUE		14	15	Positive				
P	6.5		TRUE		21	18	Positive				

P	8		FALSE		30		Positive				
Q	-1		FALSE				Negative				
Q	0		FALSE		32		Positive				
Q	1	FALSE	TRUE	TRUE	26	36	Positive	Negative	Quidel QuickVue		
Q	2	FALSE	TRUE	TRUE	24	35	Positive	Negative	Quidel QuickVue		
Q	3	TRUE	FALSE	FALSE	32	20	Positive	Positive	Quidel QuickVue		
Q	4	TRUE	FALSE	FALSE	35	24	Positive	Positive	Quidel QuickVue		
Q	5		FALSE		34	25	Positive				
R	-1							Negative	Quidel QuickVue		
R	0	FALSE	TRUE	TRUE	24		Positive	Negative	Quidel QuickVue		
R	1		TRUE		24		Positive			Positive	Lucira Check-It
S	0							Negative	Abbott BinaxNOW		
S	1	FALSE	TRUE	TRUE	25		Positive	Negative	Abbott BinaxNOW		
S	2	FALSE	TRUE	TRUE	24	25	Positive	Negative	Abbott BinaxNOW		
S	3	TRUE	FALSE	FALSE	33	19	Positive	Positive	Abbott BinaxNOW		
S	4	TRUE	FALSE	FALSE	29	25	Positive	Positive	Abbott BinaxNOW		
S	5	TRUE	FALSE	FALSE	32	20	Positive	Positive	Abbott BinaxNOW		
S	6	TRUE	FALSE	FALSE	31	20	Positive	Positive	Abbott BinaxNOW		
S	7	TRUE	FALSE	FALSE	33	16	Positive	Positive	Abbott BinaxNOW		
T	-2						Negative				
T	0	FALSE	TRUE	TRUE	25		Positive	Negative	Quidel QuickVue		
T	1		FALSE		32		Positive				
T	2		FALSE		33		Positive				
T	3		TRUE		28		Positive				
U	-1							Negative	Quidel QuickVue		
U	0	FALSE	TRUE	TRUE	25		Positive	Negative	Quidel QuickVue		

U	1		TRUE		23		Positive			Positive	Lucira Check-It
V	0	FALSE	TRUE	TRUE	25		Positive	Negative	Quidel QuickVue		
W	0	FALSE	TRUE	TRUE	25		Positive	Negative	Abbott BinaxNOW	Positive	BioReference Laboratory
X*	0	FALSE	TRUE	TRUE	28		Positive	Negative	Quidel QuickVue		
Y	0	FALSE	TRUE	TRUE	28		Positive	Negative	Quidel QuickVue		
Y	1		FALSE		32		Positive				
Z	0	FALSE	TRUE	TRUE	28		Positive	Negative	Quidel QuickVue		
AA	0	FALSE	FALSE	FALSE	30		Positive	Negative	Quidel QuickVue		
BB	0		FALSE		35		Positive				
BB	2	FALSE	FALSE	FALSE	33		Positive	Negative	Quidel QuickVue		
BB	2	FALSE	FALSE	FALSE	30		Positive	Negative	Quidel QuickVue		
CC	-1		TRUE					Negative			
CC	0	FALSE	FALSE	FALSE	34		Positive	Negative			
DD	-2		FALSE				Negative				
DD	-1		FALSE							Negative	Lucira Check-It
DD	0	FALSE	TRUE	TRUE			Positive	Negative	Abbott BinaxNOW	Positive	Cue COVID-19

Notes: Cases are ordered from lowest to highest peak Ct among discordant paired tests. *Individual with confirmed transmissions during the period of false negative antigen testing. **High risk flag indicates an individual day when a person was observed to have infectious viral load and/or confirmed transmission event while testing negative on rapid antigen test. The index date (Day 0) was defined as the date of specimen collection for the first positive PCR test for an individual. The index date for Case S was based on symptom onset one day prior to first positive PCR. Dark shading indicates a “high risk” discordant matched pair of results having a negative antigen test during infectious viral load (saliva N-gene Ct <29); pale shading indicates a discordant matched pair of results with a negative antigen test and a positive PCR with viral load considered not to be infectious. PCR was the ThermoFisher Combo Kit. Some individuals additionally had nasal swabs collected for PCR testing and for those individuals the nasal Ct is also available to contextualize the saliva Ct.