

1 **Title**

2 An experimental feasibility study evaluating the adequacy of sportswear-type wearables
3 for recording physical exercise intensity

4

5 **Authors**

6 Yoshihiro Marutani^{1,2}, Shoji Konda^{2,3}, Issei Ogasawara^{2,3}, Keita Yamasaki², Teruki
7 Yokoyama², Etsuko Maeshima¹, Ken Nakata²

8

9 **Author's affiliations**

- 10 1. Graduate School of Sport Science, Osaka University of Health and Sport Sciences,
11 Kumatori, Osaka, Japan, 590-0496
- 12 2. Department of Health and Sport Sciences, Osaka University Graduate School of
13 Medicine, Toyonaka, Osaka, Japan, 560-0043
- 14 3. Department of Sports Medical Biomechanics, Osaka University Graduate School of
15 Medicine, Suita, Osaka, Japan, 565-0871

16

17 **Corresponding authors**

18 Ken Nakata, M.D, Ph.D., Department of Health and Sport Sciences, Osaka University
19 Graduate School of Medicine, Toyonaka, Osaka, Japan, 560-0043
20 Phone: +81-6210-8439, Email: ken.nakata@hss.osaka-u.ac.jp

21

22 Shoji Konda, Ph.D., Department of Health and Sport Sciences, Osaka University
23 Graduate School of Medicine, Toyonaka, Osaka, Japan, 560-0043
24 Phone: +81-6850-6036, Email: skonda@caos.med.osaka-u.ac.jp

25 **Abstract**

26 Sportswear-type wearables with integrated inertial sensors and electrocardiogram (ECG)
27 electrodes, have been developed. We examined the feasibility of using sportswear-type
28 wearables to evaluate exercise intensity within a controlled laboratory setting. Six male
29 college athletes were asked to wear a sportswear-type wearable while performing a
30 treadmill test that reached up to 20 km/h. The magnitude of the filtered tri-axial
31 acceleration signal, recorded by the inertial sensor, was used to calculate the acceleration
32 index. The R-R intervals of ECG were used to determine heart rate; the external validity
33 of the heart rate was then evaluated according to oxygen uptake, which is the gold
34 standard physiological exercise intensity. Single regression analyses between treadmill
35 speed and the acceleration index in each participant showed that the slope of the
36 regression line was significantly greater than zero with a high coefficient of determination
37 (walking, 0.95; jogging, 0.96; running, 0.90). Another single regression analyses between
38 heart rate and oxygen uptake showed that the slope of the regression line was significantly
39 greater than zero, with a high coefficient of determination (0.96). Together, these results
40 indicate that sportswear-type wearables are a feasible technology for evaluating physical
41 and physiological exercise intensity across a wide range of physical activities and sport
42 performances.

43

44 **Keywords:** wearable sensor, acceleration, electrocardiogram, heart rate, exercise intensity

45

46

47

48

49 **1. Introduction**

50 The benefits of wearable sensors have attracted attention worldwide. With the ability to
51 monitor the intensity of physical activity in real time, the field of sports medicine has
52 recognized that wearables are technically superior to conventional monitoring techniques,
53 such as subjective questionnaires [1-4]. Wearables thus allow exercise management and
54 training programs to be quantitatively analyzed [5-7]. Hence, most wearables today use a
55 combination of physical and physiological indices. The former evaluates physical
56 intensity, determined using a global positioning system (GPS) and accelerometer to
57 quantify displacement, speed, and acceleration [8-10]. Conversely, the percentage of
58 maximum heart rate (%HRmax), and heart rate reserve (HRR) represent physiological
59 intensity [11, 12]. Together, these indices allow exercise intensity to be measured. Further,
60 the effects of exercise have traditionally been measured via oxygen uptake [13]; however,
61 this monitoring method is not suitable for non-experimental settings. As a result,
62 alongside the rise in the use of wearables, heart rate indices – which allow non-invasive,
63 day-to-day observations – have become the preferred monitoring method over oxygen
64 uptake [14-16]. Therefore, in recent years, the heart rate indices have been widely used
65 in daily life as a non-invasive method in the field of wearable sensing [14-16].

66

67 The most popular consumer wearable is the watch-type sensor worn on the wrist, which
68 allows the physical and physiological indices of daily living, exercise, and sports activity
69 to be recorded [17, 18]. The second most common is the chest-belt-type wearable, which
70 has been used for research purposes and to monitor exercise intensity in competitive
71 sports [19, 20]. Currently, athletic associations – such as the International Federation of
72 Association Football (FIFA) and International Tennis Federation (ITF) – have introduced

73 rules allowing players to don wearables during official games. The downside, however,
74 is that both watch- and chest-belt-type sensors cause discomfort and increase the risk of
75 injury, for example in situations where players come into contact with each other. The
76 development of wearables with improved comfort and lower risk of injury will enable the
77 quantification of exercise intensity across a wide range of physical activities, from daily
78 life to competitive sports [21, 22].

79

80 Recently, a sportswear-type wearable with a small inertial sensor attached to the chest and
81 two ECG electrodes sewn on opposite sides, has been developed [23]. A major advantage
82 of sportswear-type wearables is that it is as comfortable as sportswear, which enables
83 athletes to wear them in daily training, practice and even in competitive match. A previous
84 study had demonstrated the feasibility of recording ECG signals while running [24, 25];
85 however, the feasibility of evaluating exercise intensity using an embedded inertial sensor
86 is not yet known. With our study, we aimed to examine this across a wide range of
87 physical activities, within a controlled laboratory setting.

88

89 **2. Methods**

90 **2.1 Participants**

91 Six male college athletes (mean age \pm SD: 18.8 ± 0.4 years; mean height \pm SD: $171.2 \pm$
92 7.1 cm; mean weight \pm SD: 62.2 ± 5.5 kg; mean BMI \pm SD: 19.1 ± 4.0 kg/m²) volunteered
93 to participate in this study. Participants included were: (1) collegiate male athletes who
94 exercised regularly; (2) were disease-free and in good health; (3) previous experience
95 with a treadmill; (4) ability to complete the measurement protocol. All participants also
96 confirmed that they were not taking any medication, and refrained from drinking alcohol

97 the day before measurement. Prior to participating in the study, each volunteer provided
98 written informed consent, and the study was approved by the Institutional Review Board
99 (19537-2).

100

101 2.2 Data collection

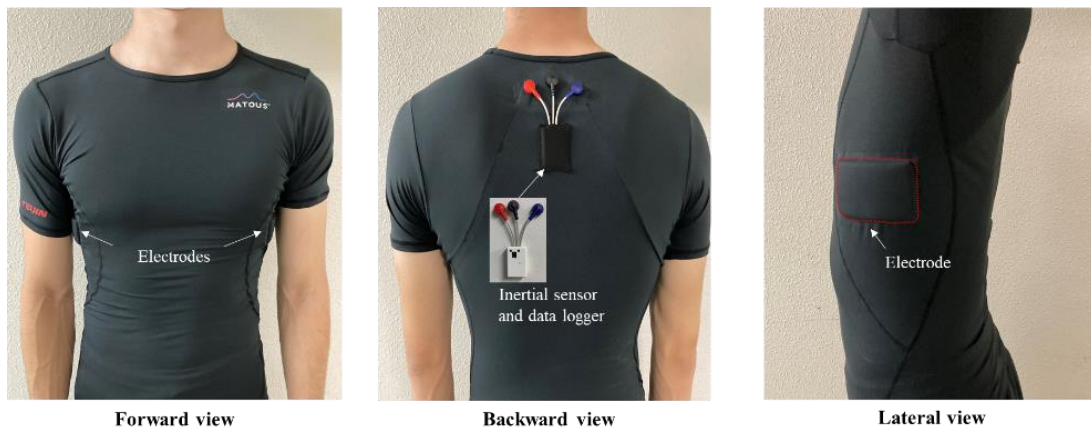
102 Each participant was asked to wear an elastic sportswear-type wearable (MATOUS^RVS,
103 Teijin Frontier Sensing Ltd., Osaka, Japan) that is similar in comfort to exercise
104 underwear. Prior to the experiment, the collegiate athletes confirmed that they felt no
105 discomfort wearing it during sports activities. A data logger operating at 1000 Hz (SS-
106 ECGHRAG, Sports Sensing Ltd, Fukuoka, Japan) was also attached to each participant's
107 upper back. An inertial sensor was built into the data logger (Figure 1), while two ECG
108 electrodes were located on either side of the wearable. Both the ECG and acceleration
109 signals were recorded by the data logger and transmitted to a laptop computer. Using a
110 respiratory gas analyzer (AE-300S AEROMONITOR, Minato Medical Science Ltd.,
111 Tokyo, Japan), the breath-by-breath method was implemented to measure oxygen uptake
112 ($\dot{V}O_2$), which is the gold standard physiological index. This allowed us to examine the
113 feasibility of using the heart rate obtained by the sportswear-type wearable, as an indicator
114 of exercise intensity. A linear relationship has been reported between heart rate and
115 oxygen uptake [17, 18]; therefore, the use of oxygen uptake which is the gold standard
116 for evaluating physiological intensity is appropriate for a feasibility study.

117

118

119

120



122 *Figure 1: Sportsweat-type wearable. ECG electrodes are located under each armpit, and*
 123 *the inertial sensor embedded into the data logger is mounted on the upper back.*

124

125 A linear incremental loading test was performed using a treadmill (Elite T5000, Johnson
 126 Health Tech Japan Ltd., Osaka, Japan) set at a zero-degree incline. After recording the
 127 measurement at rest (standing), the participants were made to walk (1-6 km/h), jog (7-12
 128 km/h), and run (13-20 km/h); speed was increased by 1 km/h every 30s. All measurements
 129 were taken in an indoor laboratory. This allowed us to examine the mechanical feasibility
 130 of evaluating the acceleration index under an exercise, intensity-controlled, condition.

131

132 2.3 Data analysis

133 The acceleration's x-axis, y-axis, and z-axis were measured by the inertial sensor and then
 134 filtered by a Butterworth band-pass filter (0.5 Hz - 20 Hz), allowing the norm of
 135 acceleration ($|a| = \sqrt{a_x^2 + a_y^2 + a_z^2}$) to be calculated. Then the norm of acceleration
 136 was filtered by a moving average filter with a 1-second window, defined as acceleration
 137 index. Following a Butterworth high-pass filtering process with a cutoff frequency of 5
 138 Hz, the ECG signal was also filtered using a fourth order Savitzky–Golay filter. The

139 filtered ECG data were used to detect the R-R interval and calculate the heart rate per
140 minute (bpm). Then the calculated heart rate was filtered by a moving average filter with
141 a 1-second window. Oxygen uptake was averaged every 30s using the respiratory gas
142 analyzer software on the output of each breath, from rest to exercise completion. Data
143 analysis was then performed using a custom-made MATLAB R2020a program
144 (MathWorks, Inc.).

145

146 2.4 Statistical analysis

147 Heart rate, acceleration index, and oxygen uptake during the last 15s were averaged and
148 used as representative values for each participant within each experimental condition. The
149 mean values and standard deviations across all participants were determined using
150 descriptive statistics. The relationship between heart rate and oxygen uptake was
151 determined using a single regression analysis. To examine whether the acceleration index
152 is equivalent to a change of 1 km/h on the treadmill or if the index adequately reflects the
153 change in exercise intensity, single regression analyses between acceleration indices and
154 treadmill speeds were performed for each participant, for the following exercise types:
155 low-intensity (walking: 1-6 km/h); medium-intensity (jogging: 7-12 km/h); and high-
156 intensity (running: 13-20 km/h). A one-sample t-test was then used to check whether the
157 slope of the regression line was significantly greater than zero.

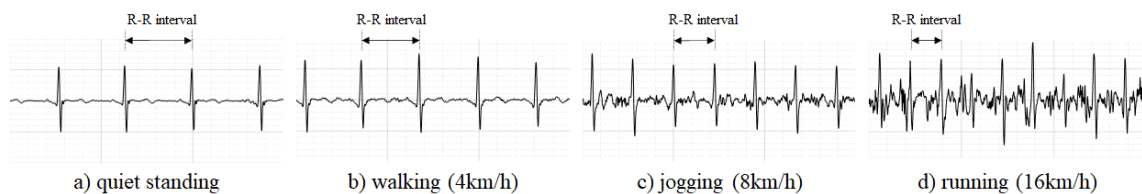
158

159 **3 Results**

160 The ECG signals obtained from the sportswear-type wearable were capable of detecting
161 the R wave, necessary for calculating the heart rate over a wide range of exercise
162 intensities: low (walking), moderate (jogging), and high (running) (Figure 2). The

163 physiological indices (heart rate and oxygen uptake) showed linear trends with increasing
164 treadmill speed. Similarly, the acceleration index showed linear trends for all exercise
165 intensities (Figure 3). However, a rapid change was observed at the switching point
166 between low-intensity exercise (walking) and moderate-intensity exercise (jogging)
167 (Figure 3). The single regression analysis between heart rate and oxygen uptake showed
168 that the slope of the regression line was significantly greater than zero ($p < 0.001$), with
169 a high coefficient of determination ($R^2 = 0.96$) (Table 1, Figure 4). Another single
170 regression analysis between treadmill speed and the acceleration index showed that the
171 slope of the regression line was significantly greater than zero at all intensities ($p < 0.001$)
172 (Table 1, Figure 5), with a high coefficient of determination (walking, 0.95; jogging, 0.96;
173 running, 0.90) (Table 1).

174



175

176

177 *Figure 2: ECG waveforms recorded by the sportswear-type wearable: (a) at rest (quiet*
178 *standing); (b) walking; (c) jogging; and (d) running.*

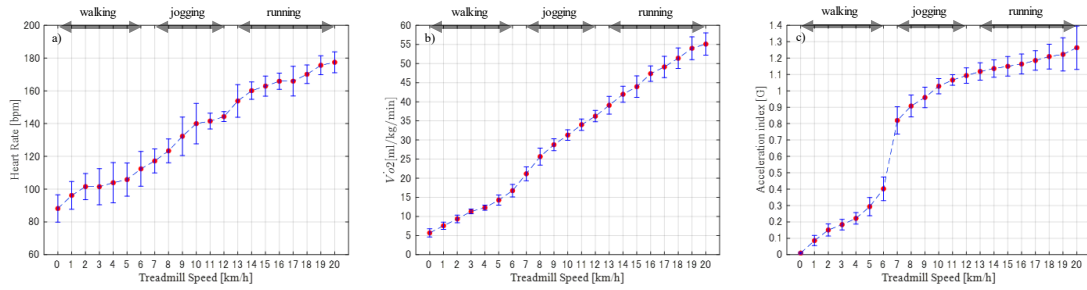
179

180

181

182

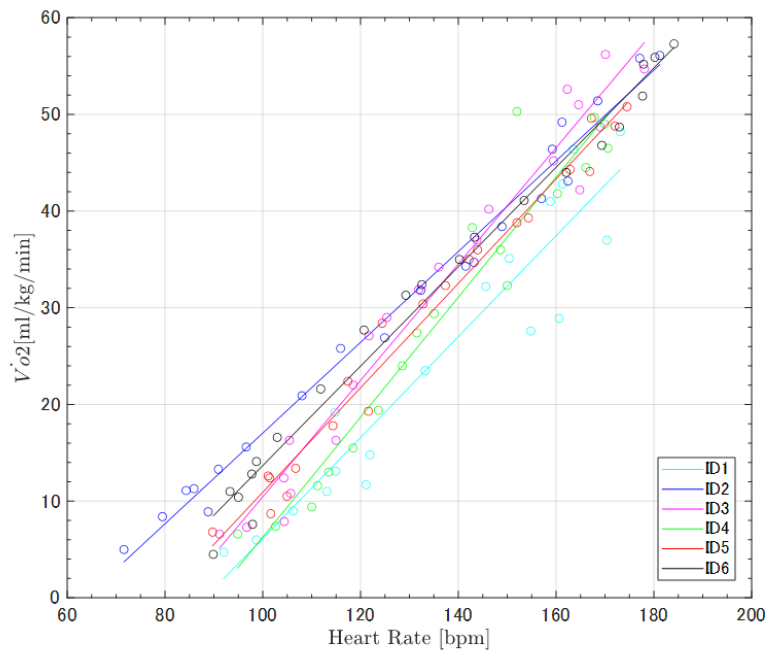
183



184

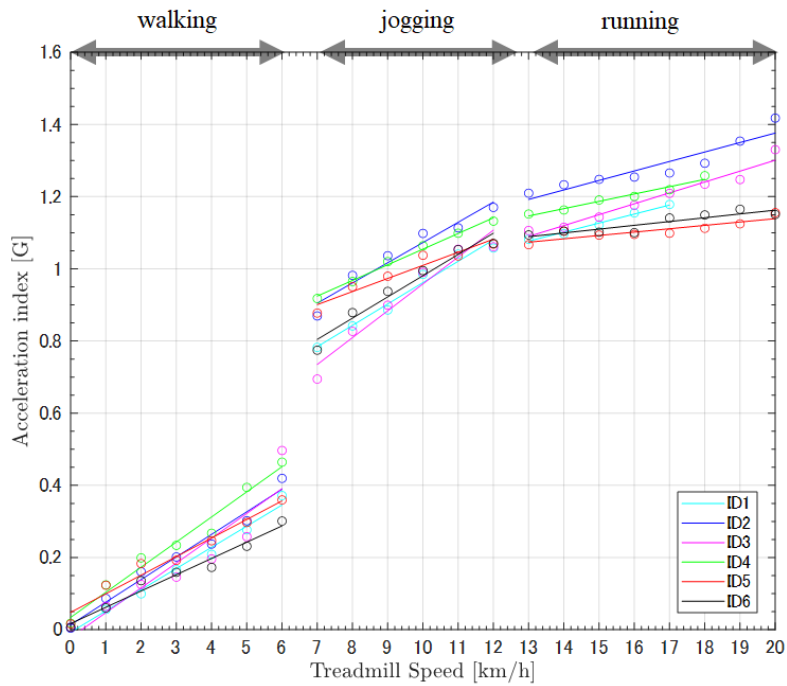
185 *Figure 3: Mean and standard deviation of (a) heart rate (bpm), (b) oxygen uptake ($\dot{V}O_2$)*
186 *and (c) acceleration index at each treadmill speed across all participants.*

187



188 *Figure 4: Regression lines of the heart rate and oxygen uptake comparison of all*
189 *participants. All participants showed a linear relationship with small variations ($r \geq 0.96$).*

190



191 *Figure 5: Regression lines of the acceleration index and treadmill speed comparison of*
 192 *all participants. All participants showed linear trends between acceleration index and*
 193 *treadmill speed within each condition: walking (0-6 km/h); jogging (7-12 km/h); and*
 194 *running (13-20 km/h).*

195

196 **Table 1: Slope of regression lines and coefficient of determination**

	acceleration index			bpm and $\dot{V}O_2$
	walking	jogging	running	
slope of regression line	0.06 (0.05-0.07)	0.06 (0.04-0.08)	0.02 (0.01-0.03)	0.54 (0.47-0.62)
coefficient of determination of regression line (R^2)	0.95 (0.86-0.99)	0.96 (0.93-0.99)	0.90 (0.77-0.99)	0.96 (0.90-0.99)

197

198

199

200

201 **4. Discussion**

202 We examined the feasibility of evaluating exercise intensity across wide range of physical
203 activity (quiet standing, walking, jogging, and running), using a sportswear-type wearable
204 in a controlled laboratory setting. The results of this study demonstrated that (1) the heart
205 rate recorded by the sportswear-type wearable highly correlated with the oxygen uptake
206 and (2) the acceleration index systematically increased alongside the rise in exercise
207 intensity. We suggest that it is feasible to use sportswear-type wearables to evaluate
208 exercise intensity across different physical activities.

209

210 The sportswear-type wearable allows the detection of R-R intervals on the recorded ECG
211 waveforms during quiet standing, walking, jogging, and running (Figure 2). This suggests
212 that heart rate can be determined from the sportswear-type wearable, and bpm is an
213 appropriate physiological indicator of exercise intensity across activities. The signal-to-
214 noise ratio decreases with the increase in artifacts during moderate to high intensity
215 movements, such as jogging and running (Figure 2). The artifacts may be a result of the
216 wearable's motion artifact and contaminated muscle activity. Recently, wearable sensors
217 have been used to predict and detect cardiac diseases [26]. With the current accuracy of
218 ECG measurements by the sportswear-type wearable, it is not suitable to detect
219 arrhythmia during high intensity exercise. However, it is assumed that it may be possible
220 at rest and low intensity exercise. In future studies, it is necessary to develop sportswear-
221 type wearable that can detect arrhythmia during high intensity exercise and sports
222 activities.

223

224 ECG-derived heart rate demonstrated a positive trend with increasing exercise intensity

225 (Figure 3 and 4). Although the validity of the ECG recording could not be evaluated by
226 comparing its results with other ECG recording devices, the strong association between
227 heart rate and oxygen uptake identified in this experiment indicates that the heart rate
228 obtained from the sportswear-type wearable is adequate for evaluating physiological
229 intensity. Indeed, prior studies have also reported a linear relationship between heart rate
230 and oxygen uptake [27, 28], reinforcing the validity of the heart rate recorded by our
231 sportswear-type wearable. Validation studies on the heart rate determined via optical
232 watch-type wearable devices have reported low accuracy during activity with varying
233 intensity [29]. This suggests that it is difficult to use watch-type wearables in competitive
234 sports that involve intense activity. Currently, the sportswear-type wearables demonstrate
235 an acceptable level of accuracy for detecting R-R intervals, indicating that the calculated
236 heart rate has corresponding accuracy. The sportswear-type wearable could thus be
237 applied to quantify physiological intensity during sports of wide-ranging intensities, from
238 rest to high intensity.

239

240 The linear association between the acceleration index and controlled treadmill speeds
241 (walking, jogging, and running) (Figure 3 and 5) demonstrates that the acceleration index
242 recorded by the wearable's inertial sensor is adequate for detecting changes in physical
243 intensity. A previous study had reported a change in acceleration index when going up to
244 a speed of 16.5 km/h; conversely, our experiment's participants reached a greater speed
245 (up to 20 km/h), which is common to many sports activities. In a previous study, the rapid
246 change of acceleration index during the transition from walking to jogging was recorded
247 by both the inertial sensor located on the upper back, and the wearable's sensor on the
248 lower back [30]. The regression line's slope was smaller during the running condition

249 than during walking and jogging. This demonstrates that the sensitivity of the acceleration
250 index relative to the change in activity intensity may slightly decrease when the athlete
251 reaches running and sprinting intensity. However, the slope of the regression line was
252 significantly greater than zero; therefore, the results suggest that the acceleration index
253 recorded by the inertial sensor located on the upper back is useful for the evaluation of
254 varied intensity in sports activities. GPS-recorded moving velocity has been widely used
255 as an indicator of exercise intensity during competitive sports, especially team sports [30-
256 32]. However, GPS validation studies have reported that the technology's reliability and
257 accuracy significantly reduce when individuals move fast over short distances, regardless
258 of sampling frequency [33-35]. In addition, GPS devices are relatively large and heavy
259 when compared with the accelerometers. Therefore, the small and light accelerometer on
260 the upper back not only demonstrates feasibility for detecting fast-moving activity over a
261 short distance, but also causes less discomfort, making the wearable device adequate for
262 competitive sports.

263

264 This study had two major limitations. First, we could not directly compare ECG results
265 between those obtained from the sportswear-type wearable and the ground truth measure.
266 Instead, we verified the feasibility of heart rate as an indicator of physiological intensity
267 by external comparison with oxygen uptake. In future studies, direct comparisons of ECG
268 records will provide results that better indicate the possibility for using sportswear-type
269 wearables to detect abnormal ECGs derived from cardiovascular disease. Second, this
270 study only tested a sportswear-type wearable designed for men. However, if a sportswear-
271 type wearable designed for women adopts the same structural locations for the ECG
272 electrodes and inertial sensor, we believe that a similar study to ours with female

273 participants will also demonstrate feasibility for evaluating exercise intensity.

274

275 **5. Conclusion**

276 The major advantage of sportswear-type wearables is that it is as comfortable as
277 sportswear, which enables athletes to wear them even in competitive sports. We
278 demonstrated that a sportswear-type wearable, with two integrated ECG electrodes and
279 an inertial sensor, is adequate for evaluating exercise intensity across physical activities
280 that range from rest to high intensity. It suggests the sportswear-type wearable is thus
281 suitable for the monitoring of physical and physiological exercise intensity during various
282 exercise types and sports activities. The sportswear-type wearables will be used as
283 assistive devices to ensure sport-related safety and improve athletic performance.

284

285 **Funding**

286 This work was partially supported by Sports Research Innovation Project (SRIP) grant
287 sponsored by the Japan Sports Agency and MEXT "Innovation Platform for Society 5.0"
288 Program.

289

290

291 **Author contribution**

292 Conceptualization, Y.M., I.O., E.M., and K.N.; Data acquisition, Y.M.; Data analysis, Y.M,
293 S.K., and I.O.; Interpretation, Y.M., I.O., K.Y., T.Y., E.M., and K.N. Writing original draft,
294 Y.M., S.K. I.O. All authors critically revised the report, commented on drafts of the
295 manuscript, and approved the final report.

296

297 **Institutional Review Board Statement**

298 The study was conducted in accordance with the guidelines of the Declaration of Helsinki
299 and approved by the Institutional Ethics Committee of Osaka University Hospital (19537-
300 2, July 1, 2020).

301

302 **Informed Consent Statement**

303 All volunteers provided written informed consent.

304

305 **Data Availability Statement**

306 The data analyzed in this manuscript will be made available from the corresponding
307 author upon reasonable request.

308

309 **Acknowledgements**

310 Not applicable

311

312 **Conflicts of Interest**

313 The authors declare no conflict of interest.

314

315 **References**

- 316 1. Aroganam, G.; Manivannan, N.; Harrison, D., Review on Wearable Technology
317 Sensors Used in Consumer Sport Applications. *Sensors (Basel)* 2019, 19, (9),
318 1983, doi:10.3390/s19091983.
- 319 2. Iqbal, M. H.; Aydin, A.; Brunckhorst, O.; Dasgupta, P.; Ahmed, K., A Review of
320 Wearable Technology in Medicine. *J R Soc Med* 2016, 109, (10), 372-380,

- 321 doi:10.1177/0141076816663560.
- 322 3. Camomilla, V.; Bergamini, E.; Fantozzi, S.; Vannozzi, G., Trends Supporting the
323 in-Field Use of Wearable Inertial Sensors for Sport Performance Evaluation: A
324 Systematic Review. *Sensors (Basel)* 2018, 18, (3), 873, doi:10.3390/s18030873.
- 325 4. Patel, M. S.; Asch, D. A.; Volpp, K. G., Wearable Devices as Facilitators, Not
326 Drivers, of Health Behavior Change. *JAMA* 2015, 313, (5), 459-460,
327 doi:10.1001/jama.2014.14781.
- 328 5. Cross, M. J.; Williams, S.; Trewartha, G.; Kemp, S. P.; Stokes, K. A., The
329 Influence of in-Season Training Loads on Injury Risk in Professional Rugby
330 Union. *Int J Sports Physiol Perform* 2016, 11, (3), 350-355,
331 doi:10.1123/ijsp.2015-0187.
- 332 6. Duggan, J. D.; Moody, J. A.; Byrne, P. J.; Cooper, S. M.; Ryan, L., Training Load
333 Monitoring Considerations for Female Gaelic Team Sports: From Theory to
334 Practice. *Sports (Basel)* 2021, 9, (6), 84, doi:10.3390/sports9060084.
- 335 7. Esmaeili, A.; Stewart, A. M.; Hopkins, W. G.; Elias, G. P.; Lazarus, B. H.; Rowell,
336 A. E.; Aughey, R. J., Normal Variability of Weekly Musculoskeletal Screening
337 Scores and the Influence of Training Load Across an Australian Football League
338 Season. *Front Physiol* 2018, 9, 144, doi:10.3389/fphys.2018.00144.
- 339 8. Gómez-Carmona, C. D.; Bastida-Castillo, A.; Ibáñez, S. J.; Pino-Ortega, J.,
340 Accelerometry as a Method for External Workload Monitoring in Invasion Team
341 Sports. A Systematic Review. *PLOS ONE* 2020, 15, (8), e0236643,
342 doi:10.1371/journal.pone.0236643.
- 343 9. Harper, D. J.; Carling, C.; Kiely, J., High-Intensity Acceleration and Deceleration
344 Demands in Elite Team Sports Competitive Match Play: A Systematic Review and

- 345 Meta-Analysis of Observational Studies. *Sports Med* 2019, 49, (12), 1923-1947,
346 doi:10.1007/s40279-019-01170-1.
- 347 10. Nicolella, D. P.; Torres-Ronda, L.; Saylor, K. J.; Schelling, X., Validity and
348 Reliability of an Accelerometer-Based Player Tracking Device. *PLOS ONE* 2018,
349 13, (2), e0191823, doi:10.1371/journal.pone.0191823.
- 350 11. Cardinale, M.; Varley, M. C., Wearable Training-Monitoring Technology:
351 Applications, Challenges, and Opportunities. *Int J Sports Physiol Perform* 2017,
352 12, (Suppl 2), S255-S262, doi:10.1123/ijsp.2016-0423.
- 353 12. Schneider, C.; Hanakam, F.; Wiewelhove, T.; Doweling, A.; Kellmann, M.; Meyer,
354 T.; Pfeiffer, M.; Ferrauti, A., Heart Rate Monitoring in Team Sports-A Conceptual
355 Framework for Contextualizing Heart Rate Measures for Training and Recovery
356 Prescription. *Front Physiol* 2018, 9, 639, doi:10.3389/fphys.2018.00639.
- 357 13. Andrews, R. B., Net Heart Rate as a Substitute for Respiratory Calorimetry. *Am*
358 *J Clin Nutr* 1971, 24, (9), 1139-1147, doi:10.1093/ajcn/24.9.1139.
- 359 14. Bonomi, A. G.; Ten Hoor, G. A.; de Morree, H. M.; Plasqui, G.; Sartor, F.,
360 Cardiorespiratory Fitness Estimation From Heart Rate and Body Movement in
361 Daily Life. *J Appl Physiol* (1985) 2020, 128, (3), 493-500,
362 doi:10.1152/jappphysiol.00631.2019.
- 363 15. Bot, S. D. M.; Hollander, A. P., The Relationship Between Heart Rate and Oxygen
364 Uptake During Non-Steady State Exercise. *Ergonomics* 2000, 43, (10), 1578-
365 1592, doi:10.1080/001401300750004005.
- 366 16. Chow, H. W.; Yang, C. C., Accuracy of Optical Heart Rate Sensing Technology in
367 Wearable Fitness Trackers for Young and Older Adults: Validation and
368 Comparison Study. *JMIR MHealth UHealth* 2020, 8, (4), e14707,

- 369 doi:10.2196/14707.
- 370 17. Lee, J. M.; Kim, Y.; Welk, G. J., Validity of Consumer-Based Physical Activity
371 Monitors. *Med Sci Sports Exerc* 2014, 46, (9), 1840-1848,
372 doi:10.1249/MSS.0000000000000287.
- 373 18. Sushames, A.; Edwards, A.; Thompson, F.; McDermott, R.; Gebel, K., Validity
374 and Reliability of Fitbit Flex for Step Count, Moderate to Vigorous Physical
375 Activity and Activity Energy Expenditure. *PLOS ONE* 2016, 11, (9), e0161224,
376 doi:10.1371/journal.pone.0161224.
- 377 19. Achten, J.; Jeukendrup, A. E., Heart Rate Monitoring: Applications and
378 Limitations. *Sports Med* 2003, 33, (7), 517-538, doi:10.2165/00007256-
379 200333070-00004.
- 380 20. Lutz, J.; Memmert, D.; Raabe, D.; Dornberger, R.; Donath, L., Wearables for
381 Integrative Performance and Tactic Analyses: Opportunities, Challenges, and
382 Future Directions. *Int J Environ Res Public Health* 2020, 17, (1), 59,
383 doi:10.3390/ijerph17010059.
- 384 21. Nakanishi, M.; Izumi, S.; Nagayoshi, S.; Kawaguchi, H.; Yoshimoto, M.; Shiga,
385 T.; Ando, T.; Nakae, S.; Usui, C.; Aoyama, T.; Tanaka, S., Estimating Metabolic
386 Equivalentents for Activities in Daily Life Using Acceleration and Heart Rate in
387 Wearable Devices. *Biomed Eng OnLine* 2018, 17, (1), 100, doi:10.1186/s12938-
388 018-0532-2.
- 389 22. Bayoumy, K.; Gaber, M.; Elshafeey, A.; Mhaimed, O.; Dineen, E. H.; Marvel, F.
390 A.; Martin, S. S.; Muse, E. D.; Turakhia, M. P.; Tarakji, K. G.; Elshazly, M. B.,
391 Smart Wearable Devices in Cardiovascular Care: Where We Are and How to
392 Move Forward. *Nat Rev Cardiol* 2021, 18, (8), 581-599, doi:10.1038/s41569-021-

- 393 00522-7.
- 394 23. An, X.; Stylios, G. K., A Hybrid Textile Electrode for Electrocardiogram (ECG)
395 Measurement and Motion Tracking. *Materials (Basel)* 2018, 11, (10), 1887,
396 doi:10.3390/ma11101887.
- 397 24. Arquilla, K.; Webb, A. K.; Anderson, A. P., Textile Electrocardiogram (ECG)
398 Electrodes for Wearable Health Monitoring. *Sensors (Basel)* 2020, 20, (4), 1013,
399 doi:10.3390/s20041013.
- 400 25. Singhal, A.; Cowie, M. R., The Role of Wearables in Heart Failure. *Curr Heart*
401 *Fail Rep* 2020, 17, (4), 125-132, doi:10.1007/s11897-020-00467-x.
- 402 26. Schantz, P.; Salier Eriksson, J.; Rosdahl, H., The Heart Rate Method for
403 Estimating Oxygen Uptake: Analyses of Reproducibility Using a Range of Heart
404 Rates From Commuter Walking. *Eur J Appl Physiol* 2019, 119, (11-12), 2655-
405 2671, doi:10.1007/s00421-019-04236-0.
- 406 27. Colosio AL, Pedrinolla A, Da Lozzo G, Pogliaghi S. Heart Rate-Index Estimates
407 Oxygen Uptake, Energy Expenditure and Aerobic Fitness in Rugby Players. *J*
408 *Sports Sci Med.* 2018 ,17, (4), 633-639.
- 409 28. Bent, B.; Goldstein, B. A.; Kibbe, W. A.; Dunn, J. P., Investigating Sources of
410 Inaccuracy in Wearable Optical Heart Rate Sensors. *NPJ Digit Med* 2020, 3, 18,
411 doi:10.1038/s41746-020-0226-6.
- 412 29. Fudge, B. W.; Wilson, J.; Easton, C.; Irwin, L.; Clark, J.; Haddow, O.; Kayser, B.;
413 Pitsiladis, Y. P., Estimation of Oxygen Uptake During Fast Running Using
414 Accelerometry and Heart Rate. *Med Sci Sports Exerc* 2007, 39, (1), 192-198,
415 doi:10.1249/01.mss.0000235884.71487.21.
- 416 30. De Brabandere, A.; Op De Beéck, T.; Schütte, K. H.; Meert, W.; Vanwanseele, B.;

- 417 Davis, J., Data Fusion of Body-Worn Accelerometers and Heart Rate to Predict
418 VO₂max During Submaximal Running. PLOS ONE 2018, 13, (6), e0199509,
419 doi:10.1371/journal.pone.0199509.
- 420 31. Carling, C.; Bloomfield, J.; Nelsen, L.; Reilly, T., The Role of Motion Analysis in
421 Elite Soccer: Contemporary Performance Measurement Techniques and Work
422 Rate Data. Sports Med 2008, 38, (10), 839-862, doi:10.2165/00007256-
423 200838100-00004.
- 424 32. Seshadri, D. R.; Li, R. T.; Voos, J. E.; Rowbottom, J. R.; Alfes, C. M.; Zorman, C.
425 A.; Drummond, C. K., Wearable Sensors for Monitoring the Internal and External
426 Workload of the Athlete. NPJ Digit Med 2019, 2, 71, doi:10.1038/s41746-019-
427 0149-2.
- 428 33. Coutts, A. J.; Duffield, R., Validity and Reliability of GPS Devices for Measuring
429 Movement Demands of Team Sports. J Sci Med Sport 2010, 13, (1), 133-135,
430 doi:10.1016/j.jsams.2008.09.015.
- 431 34. Hausler, J.; Halaki, M.; Orr, R., Application of Global Positioning System and
432 Microsensor Technology in Competitive Rugby League Match-Play: A
433 Systematic Review and Meta-Analysis. Sports Med 2016, 46, (4), 559-588,
434 doi:10.1007/s40279-015-0440-6.
- 435 35. Teixeira, J. E.; Forte, P.; Ferraz, R.; Leal, M.; Ribeiro, J.; Silva, A. J.; Barbosa,
436 T. M.; Monteiro, A. M., Monitoring Accumulated Training and Match Load
437 in Football: A Systematic Review. Int J Environ Res Public Health 2021, 18, (8),
438 3906, doi:10.3390/ijerph18083906.