

Protective association of *HLA-DRB1*04* subtypes in neurodegenerative diseases implicates acetylated Tau PHF6 sequences

Yann Le Guen^{1,2,*}, Guo Luo^{3,*}, Aditya Ambati^{3,*}, Vincent Damotte^{4,*}, Iris Jansen^{5,6}, Eric Yu^{7,8,9}, Aude Nicolas⁴, Itziar de Rojas^{10,11}, Thiago Peixoto Leal¹², Akinori Miyashita¹³, Céline Bellenguez⁴, Michelle Mulan Lian^{14,15}, Kayenat Parveen¹⁶, Takashi Morizono¹⁷, Hyeonseul Park¹⁸, Benjamin Grenier-Boley⁴, Tatsuhiko Naito^{19,20}, Fahri Küçükali^{21,22,23}, Seth D. Talyansky¹, Selina Maria Yogeshwar^{3,24,25}, Vicente Sempere³, Wataru Satake²⁰, Victoria Alvarez^{26,27}, Beatrice Arosio²⁸, Michael E. Belloy¹, Luisa Benussi²⁹, Anne Boland³⁰, Barbara Borroni³¹, María J. Bullido^{11,32,33,34}, Paolo Caffarra³⁵, Jordi Clarimon^{11,36}, Antonio Daniele^{37,38}, Daniel Darling³, Stéphanie Debette^{39,40}, Jean-François Deleuze³⁰, Martin Dichgans^{41,42,43}, Carole Dufouil^{44,45}, Emmanuel During³, Emrah Düzel^{46,47}, Daniela Galimberti^{48,49}, Guillermo Garcia-Ribas⁵⁰, José María García-Alberca^{11,51}, Pablo García-González¹⁰, Vilmantas Giedraitis⁵², Oliver Goldhardt⁵³, Caroline Graff⁵⁴, Edna Grünblatt^{55,56,57}, Olivier Hanon⁵⁸, Lucrezia Hausner⁵⁹, Stefanie Heilmann-Heimbach⁶⁰, Henne Holstege^{5,61}, Jakub Hort^{62,63}, Yoo Jin Jung⁶⁴, Deckert Jürgen⁶⁵, Silke Kern^{66,67}, Teemu Kuulasmaa⁶⁸, Ling Ling³, Carlo Masullo⁶⁹, Patrizia Mecocci⁷⁰, Shima Mehrabian⁷¹, Alexandre de Mendonça⁷², Mercè Boada^{10,11}, Pablo Mir^{11,73}, Susanne Moebus⁷⁴, Fermin Moreno^{11,75,76}, Benedetta Nacmias^{77,78}, Gael Nicolas⁷⁹, Børge G. Nordestgaard^{80,81}, Goran Papenberg⁸², Janne Papma⁸³, Lucilla Parnetti⁸⁴, Florence Pasquier⁸⁵, Pau Pastor^{86,87}, Oliver Peters^{88,89}, Yolande A.L. Pijnenburg⁵, Gerard Piñol-Ripoll^{90,91}, Julius Popp^{92,93,94}, Laura Molina Porcel^{95,96}, Raquel Puerta¹⁰, Jordi Pérez-Tur^{11,97,98}, Innocenzo Rainero⁹⁹, Inez Ramakers¹⁰⁰, Luis M Real^{101,102}, Steffi Riedel-Heller¹⁰³, Eloy Rodriguez-Rodriguez^{11,104}, Jose Luís Royo¹⁰², Dan Rujescu¹⁰⁵, Nikolaos Scarmeas^{106,107}, Philip Scheltens⁵, Norbert Scherbaum¹⁰⁸, Anja Schneider^{109,110}, Davide Seripa¹¹¹, Ingmar Skoog^{66,67}, Vincenzo Solfrizzi¹¹², Gianfranco Spalletta^{113,114}, Alessio Squassina¹¹⁵, John van Swieten¹¹⁶, Raquel Sánchez-Valle¹¹⁷, Eng-King Tan^{118,119}, Thomas Tegos¹²⁰, Charlotte Teunissen¹²¹, Jesper Qvist Thomassen¹²², Lucio Tremolizzo¹²³, Martin Vyhnalek^{62,63}, Frans Verhey¹⁰⁰, Margda Waern^{66,124}, Jens Wiltfang^{125,126,127}, Jing Zhang³, Henrik Zetterberg^{128,129,130,131}, Kaj Blennow^{128,129}, Julie Williams^{132,133}, Philippe Amouyel⁴, Frank Jessen^{109,134,135}, Patrick G. Kehoe¹³⁶, Ole Andreassen^{137,138}, Cornelia Van Duin^{139,140}, Magda Tsolaki¹²⁰, Pascual Sánchez-Juan^{11,141}, Ruth Frikke-Schmidt^{81,122}, Kristel Sleegers^{21,22,23}, Tatsushi Toda²⁰, Anna Zettergren⁶⁶, Martin Ingelsson^{52,142,143}, EABD contributors†, GR@ACE study group†, DEGESCO consortium†, DemGene†, EADI†, GERAD†, Asian Parkinson's Disease Genetics consortium†, Yukinori Okada^{19,144,145}, Giacomina Rossi¹⁴⁶, Mikko Hiltunen⁶⁸, Jungsoo Gim¹⁸, Kouichi Ozaki^{17,147}, Rebecca Sims¹³³, Jia Nee Foo^{14,15}, Wiesje van der Flier⁵, Takeshi Ikeuchi¹³, Alfredo Ramirez^{16,148,109,149}, Ignacio Mata¹², Agustín Ruiz^{10,11}, Ziv Gan-Or^{7,8,9}, Jean-Charles Lambert^{4,*}, Michael D. Greicius^{1,*}, Emmanuel Mignot^{3,*,#}.

¹Department of Neurology and Neurological Sciences, Stanford University, Stanford, CA, USA

²Institut du Cerveau - Paris Brain Institute - ICM, Paris, France

³Center for Sleep Sciences and Medicine, Stanford University, Palo Alto, USA

⁴Univ. Lille, Inserm, CHU Lille, Institut Pasteur de Lille, U1167-RID-AGE facteurs de risque et déterminants moléculaires des maladies liés au vieillissement, Lille, France

⁵Alzheimer Center Amsterdam, Department of Neurology, Amsterdam Neuroscience, Vrije Universiteit Amsterdam, Amsterdam UMC, Amsterdam, The Netherlands

- ⁶Department of Complex Trait Genetics, Center for Neurogenomics and Cognitive Research, Amsterdam Neuroscience, Vrije University, Amsterdam, The Netherlands.
- ⁷The Neuro (Montreal Neurological Institute-Hospital), Montreal, Canada.
- ⁸Department of Human Genetics, McGill University, Montreal, Canada.
- ⁹Department of Neurology & Neurosurgery, McGill University, Montreal, Canada.
- ¹⁰Research Center and Memory clinic Fundació ACE, Institut Català de Neurociències Aplicades, Universitat Internacional de Catalunya, Barcelona, Spain.
- ¹¹Networking Research Center on Neurodegenerative Diseases (CIBERNED), Instituto de Salud Carlos III, Madrid, Spain.
- ¹²Genomic Medicine, Lerner Research Institute, Cleveland Clinic, Cleveland, OH, USA.
- ¹³Department of Molecular Genetics, Brain Research Institute. Niigata University, Japan.
- ¹⁴Lee Kong Chian School of Medicine, Nanyang Technological University Singapore, 11 Mandalay Rd, Singapore 308232, Singapore.
- ¹⁵Laboratory of Neurogenetics, Genome Institute of Singapore, A*STAR, Singapore 138672, Singapore.
- ¹⁶Department of Neurodegenerative diseases and Geriatric Psychiatry, University Hospital Bonn, Medical Faculty, Bonn, Germany.
- ¹⁷Medical Genome Center, National Center for Geriatrics and Gerontology, Obu, Aichi, Japan.
- ¹⁸Department of Biomedical Science, Chosun University, Gwangju, Korea.
- ¹⁹Department of Statistical Genetics, Osaka University Graduate School of Medicine, Suita, Japan.
- ²⁰Department of Neurology, Graduate School of Medicine, The University of Tokyo, Tokyo, Japan.
- ²¹Complex Genetics of Alzheimer's Disease, Center for Molecular Neurology, VIB, Antwerp, Belgium.
- ²²Laboratory of Neurogenetics, Institute Born - Bunge, Antwerp, Belgium.
- ²³Department of Biomedical Sciences, University of Antwerp, Antwerp, Belgium.
- ²⁴Department of Neurology, Charité–Universitätsmedizin, 10117, Berlin, Germany.
- ²⁵Charité – Universitätsmedizin Berlin, Einstein Center for Neurosciences Berlin, 10117, Berlin, Germany.
- ²⁶Laboratorio de Genética. Hospital Universitario Central de Asturias, Oviedo, Spain.
- ²⁷Instituto de Investigación Sanitaria del Principado de Asturias (ISPA), Spain.
- ²⁸Department of Clinical Sciences and Community Health, University of Milan, 20122 Milan, Italy.
- ²⁹Molecular Markers Laboratory, IRCCS Istituto Centro San Giovanni di Dio Fatebenefratelli, Brescia, Italy.
- ³⁰Université Paris-Saclay, CEA, Centre National de Recherche Génomique Humaine, 91057, Evry, France.
- ³¹Centre for Neurodegenerative Disorders, Neurology Unit, Department of Clinical and Experimental Sciences, University of Brescia, Italy.
- ³²Centro de Biología Molecular Severo Ochoa (UAM-CSIC), Madrid, Spain.
- ³³Instituto de Investigación Sanitaria 'Hospital la Paz' (IdIPaz), Madrid, Spain.
- ³⁴Universidad Autónoma de Madrid, Spain.
- ³⁵Unit of Neurology, University of Parma and AOU, Parma, Italy.
- ³⁶Department of Neurology, II B Sant Pau, Hospital de la Santa Creu i Sant Pau, Universitat Autònoma de Barcelona, Barcelona, Spain.
- ³⁷Department of Neuroscience, Università Cattolica del Sacro Cuore, Rome, Italy.
- ³⁸Neurology Unit, IRCCS Fondazione Policlinico Universitario A. Gemelli, Rome, Italy.
- ³⁹University Bordeaux, Inserm, Bordeaux Population Health Research Center, France.
- ⁴⁰Department of Neurology, Bordeaux University Hospital, Bordeaux, France.
- ⁴¹Institute for Stroke and Dementia Research (ISD), University Hospital, LMU Munich, Munich, Germany.
- ⁴²German Center for Neurodegenerative Diseases (DZNE), Munich, Germany.
- ⁴³Munich Cluster for Systems Neurology (SyNergy), Munich, Germany.
- ⁴⁴Inserm, Bordeaux Population Health Research Center, UMR 1219, Univ. Bordeaux, ISPED, CIC 1401-EC, Univ Bordeaux, Bordeaux, France.
- ⁴⁵CHU de Bordeaux, Pole santé publique, Bordeaux, France.
- ⁴⁶German Center for Neurodegenerative Diseases (DZNE), Magdeburg, Germany.
- ⁴⁷Institute of Cognitive Neurology and Dementia Research (IKND), Otto-von-Guericke University, Magdeburg, Germany.
- ⁴⁸Neurodegenerative Diseases Unit, Fondazione IRCCS Ca' Granda, Ospedale Policlinico, Milan, Italy.
- ⁴⁹Dept. of Biomedical, Surgical and Dental Sciences, University of Milan, Milan, Italy.
- ⁵⁰Hospital Universitario Ramon y Cajal, IRYCIS, Madrid, Spain.
- ⁵¹Alzheimer Research Center & Memory Clinic, Andalusian Institute for Neuroscience, Málaga, Spain.
- ⁵²Dept. of Public Health and Caring Sciences / Geriatrics, Uppsala University, Sweden,

- ⁵³Technical University of Munich, School of Medicine, Klinikum rechts der Isar, Department of Psychiatry and Psychotherapy, Munich, Germany.
- ⁵⁴Unit for Hereditary Dementias, Theme Aging, Karolinska Hospital-Solna, 171 64 Stockholm Sweden.
- ⁵⁵Department of Child and Adolescent Psychiatry and Psychotherapy, University Hospital of Psychiatry Zurich, University of Zurich, Zurich, Switzerland.
- ⁵⁶Neuroscience Center Zurich, University of Zurich and ETH Zurich, Switzerland.
- ⁵⁷Zurich Center for Integrative Human Physiology, University of Zurich, Switzerland.
- ⁵⁸Université de Paris, EA 4468, APHP, Hôpital Broca, Paris, France.
- ⁵⁹Department of Geriatric Psychiatry, Central Institute for Mental Health Mannheim, Faculty Mannheim, University of Heidelberg, Germany.
- ⁶⁰Institute of Human Genetics, University of Bonn, School of Medicine & Hospital Bonn, Bonn, Germany
- ⁶¹Department of Clinical Genetics, VU University Medical Centre, Amsterdam, The Netherlands.
- ⁶²Memory Clinic, Department of Neurology, Charles University, 2nd Faculty of Medicine and Motol University Hospital, Czech Republic.
- ⁶³International Clinical Research Center, St. Anne's University Hospital Brno, Brno, Czech Republic.
- ⁶⁴Stanford Neurosciences Program, Stanford University School of Medicine, Stanford, CA 94305, USA.
- ⁶⁵Department of Psychiatry, Psychosomatics and Psychotherapy, Center of Mental Health, University Hospital of Würzburg, Germany.
- ⁶⁶Neuropsychiatric Epidemiology Unit, Department of Psychiatry and Neurochemistry, Institute of Neuroscience and Physiology, the Sahlgrenska Academy, Centre for Ageing and Health (AGECAP) at the University of Gothenburg, Sweden.
- ⁶⁷Region Västra Götaland, Sahlgrenska University Hospital, Psychiatry, Cognition and Old Age Psychiatry Clinic, Gothenburg, Sweden.
- ⁶⁸Institute of Biomedicine, University of Eastern Finland, Finland.
- ⁶⁹Institute of Neurology, Catholic University of the Sacred Heart, Rome, Italy.
- ⁷⁰Institute of Gerontology and Geriatrics, Department of Medicine and Surgery, University of Perugia, Italy
- ⁷¹Clinic of Neurology, UH "Alexandrovska", Medical University - Sofia, Sofia, Bulgaria.
- ⁷²Faculty of Medicine, University of Lisbon, Portugal.
- ⁷³Unidad de Trastornos del Movimiento, Servicio de Neurología y Neurofisiología. Instituto de Biomedicina de Sevilla (IBiS), Hospital Universitario Virgen del Rocío/CSIC/Universidad de Sevilla, Seville, Spain.
- ⁷⁴Institute for Urban Public Health, University Hospital of University Duisburg-Essen, Essen, Germany.
- ⁷⁵Department of Neurology. Hospital Universitario Donostia. San Sebastian, Spain.
- ⁷⁶Neurosciences Area. Instituto Biodonostia. San Sebastian, Spain.
- ⁷⁷Department of Neuroscience, Psychology, Drug Research and Child Health University of Florence
- ⁷⁸IRCCS Fondazione Don Carlo Gnocchi, Florence, Italy.
- ⁷⁹Normandie Univ, UNIROUEN, INSERM U1245 and CHU Rouen, Department of Genetics and CNR-MAJ, F-76000 Rouen, France.
- ⁸⁰Department of Clinical Biochemistry, Copenhagen University, Herlev Gentofte, Copenhagen, Denmark
- ⁸¹Department of Clinical Medicine, University of Copenhagen, Copenhagen, Denmark
- ⁸²Ageing Research Center, Department of Neurobiology, Care Sciences and Society, Karolinska Institutet and Stockholm University, Stockholm, Sweden
- ⁸³Department of Neurology, Alzheimer Center, Erasmus University Medical Center, The Netherlands.
- ⁸⁴Centre for Memory Disturbances, Lab of Clinical Neurochemistry, Neurology, University of Perugia, Italy.
- ⁸⁵Univerité de Lille, INSERM1172, CHU Clinical and Research Memory Research Centre (CMRR) of Distalz, Lille France.
- ⁸⁶Fundació Docència i Recerca MútuaTerrassa, Terrassa, Barcelona, Spain.
- ⁸⁷Memory Disorders Unit, Department of Neurology, Hospital Universitari Mutua de Terrassa, Terrassa, Barcelona, Spain.
- ⁸⁸German Center for Neurodegenerative Diseases (DZNE), Berlin, Germany
- ⁸⁹Charité – Universitätsmedizin Berlin, corporate member of Freie Universität Berlin, Humboldt-Universität zu Berlin, and Berlin Institute of Health, Institute of Psychiatry and Psychotherapy, Hindenburgdamm 30, 12203 Berlin, Germany.
- ⁹⁰Unitat Trastorns Cognitius, Hospital Universitari Santa Maria de Lleida, Lleida, Spain.
- ⁹¹Institut de Recerca Biomedica de Lleida (IRBLLeida), Lleida, Spain.
- ⁹²Old Age Psychiatry, Department of Psychiatry, Lausanne University Hospital, Lausanne, Switzerland.
- ⁹³Department of Geriatric Psychiatry, University Hospital of Psychiatry Zürich, Zürich, Switzerland.

- ⁹⁴Institute for Regenerative Medicine, University of Zürich, Switzerland.
- ⁹⁵Neurological Tissue Bank- Biobanc-Hospital Clinic -IDIBAPS, Barcelona, Spain.
- ⁹⁶Alzheimer's disease and cognitive disorders Unit. Neurology, Hospital Clinic, Barcelona, Spain.
- ⁹⁷Unitat de Genètica Molecular, Institut de Biomedicina de València-CSIC, Valencia, Spain.
- ⁹⁸Unidad Mixta de Neurología Genética, Instituto de Investigación Sanitaria La Fe, Valencia, Spain.
- ⁹⁹Department of Neuroscience "Rita Levi Montalcini", University of Torino, Torino, Italy.
- ¹⁰⁰Maastricht University, Department of Psychiatry & Neuropsychologie, Alzheimer Center Limburg, Maastricht, the Netherlands.
- ¹⁰¹Unidad Clínica de Enfermedades Infecciosas y Microbiología. Hospital Universitario de Valme, Sevilla, Spain.
- ¹⁰²Departamento de Especialidades Quirúrgicas, Bioquímica e Inmunología. Facultad de Medicina. Universidad de Málaga. Málaga, Spain.
- ¹⁰³Institute of Social Medicine, Occupational Health and Public Health, University of Leipzig, Leipzig, Germany.
- ¹⁰⁴Neurology Service, Marqués de Valdecilla University Hospital (University of Cantabria and IDIVAL), Santander, Spain.
- ¹⁰⁵Martin-Luther-University Halle-Wittenberg, University Clinic and Outpatient Clinic for Psychiatry, Psychotherapy and Psychosomatics, Halle (Saale), Germany.
- ¹⁰⁶Taub Institute for Research in Alzheimer's Disease and the Aging Brain, The Gertrude H. Sergievsky Center, Department of Neurology, Columbia University, New York, NY, USA.
- ¹⁰⁷1st Department of Neurology, Aiginition Hospital, National and Kapodistrian University of Athens, Medical School, Greece.
- ¹⁰⁸LVR-Hospital Essen, Department of Psychiatry and Psychotherapy, Medical Faculty, University of Duisburg-Essen, Germany.
- ¹⁰⁹German Center for Neurodegenerative Diseases (DZNE), Bonn, Germany.
- ¹¹⁰Department for Neurodegenerative Diseases and Geriatric Psychiatry, University Hospital Bonn, Venusberg-Campus 1, 53127 Bonn, Germany
- ¹¹¹Laboratory for Advanced Hematological Diagnostics, Department of Hematology and Stem Cell Transplant, Lecce, Italy.
- ¹¹²Interdisciplinary Department of Medicine, Geriatric Medicine and Memory Unit, University of Bari "A. Moro, Bari, Italy.
- ¹¹³Laboratory of Neuropsychiatry, IRCCS Santa Lucia Foundation, Rome, Italy.
- ¹¹⁴Department of Psychiatry and Behavioral Sciences, Baylor College of Medicine, Houston Texas, USA.
- ¹¹⁵Department of Biomedical Sciences, University of Cagliari, Italy.
- ¹¹⁶Department of Neurology, Erasmus MC, Rotterdam, the Netherlands.
- ¹¹⁷Alzheimer's disease and other cognitive disorders unit. Service of Neurology. Hospital Clínic of Barcelona. Institut d'Investigacions Biomèdiques August Pi i Sunyer, University of Barcelona, Barcelona, Spain.
- ¹¹⁸Department of Neurology, National Neuroscience Institute, Singapore General Hospital, Singapore.
- ¹¹⁹Duke-National University of Singapore Medical School, Singapore.
- ¹²⁰1st Department of Neurology, Medical school, Aristotle University of Thessaloniki, Thessaloniki, Makedonia, Greece.
- ¹²¹Neurochemistry Lab, Department of Clinical Chemistry, Amsterdam Neuroscience, Amsterdam UMC, Vrije Universiteit Amsterdam, Amsterdam, the Netherlands.
- ¹²²Department of Clinical Biochemistry, Copenhagen University Hospital - Rigshospitalet, Copenhagen, Denmark.
- ¹²³Neurology, "San Gerardo" hospital, Monza and University of Milano-Bicocca, Italy.
- ¹²⁴Region Västra Götaland, Sahlgrenska University Hospital, Psychosis Clinic, Gothenburg, Sweden.
- ¹²⁵Department of Psychiatry and Psychotherapy, University Medical Center Goettingen, Goettingen, Germany.
- ¹²⁶German Center for Neurodegenerative Diseases (DZNE), Goettingen, Germany.
- ¹²⁷Neurosciences and Signaling Group, Institute of Biomedicine (iBiMED), Department of Medical Sciences, University of Aveiro, Aveiro, Portugal
- ¹²⁸Department of Psychiatry and Neurochemistry, Institute of Neuroscience and Physiology, the Sahlgrenska Academy at the University of Gothenburg, Mölndal, Sweden.
- ¹²⁹Clinical Neurochemistry Laboratory, Sahlgrenska University Hospital, Mölndal, Sweden.
- ¹³⁰Department of Neurodegenerative Disease, UCL Institute of Neurology, London, United Kingdom.

¹³¹UK Dementia Research Institute at UCL, London, United Kingdom.

¹³²UKDRI@Cardiff, School of Medicine, Cardiff University, Wales, United Kingdom.

¹³³Division of Psychological Medicine and Clinical Neuroscience, School of Medicine, Cardiff University, Wales, United Kingdom.

¹³⁴Department of Psychiatry and Psychotherapy, Faculty of Medicine and University Hospital Cologne, University of Cologne, Cologne, Germany.

¹³⁵Cluster of Excellence Cellular Stress Responses in Aging-associated Diseases (CECAD), University of Cologne, Cologne, Germany.

¹³⁶Translational Health Sciences, Bristol Medical School, University of Bristol, Bristol, United Kingdom.

¹³⁷NORMENT Centre, Division of Mental Health and Addiction, Oslo University Hospital, Oslo, Norway.

¹³⁸Institute of Clinical Medicine, University of Oslo, Oslo, Norway.

¹³⁹Department of Epidemiology, ErasmusMC, Rotterdam, The Netherlands.

¹⁴⁰Nuffield Department of Population Health Oxford University, Oxford, United Kingdom.

¹⁴¹Alzheimer's Centre Reina Sofia-CIEN Foundation, Madrid, Spain.

¹⁴²Krembil Brain Institute, University Health Network, Toronto, Canada.

¹⁴³Dept. of Medicine and Tanz Centre for Research in Neurodegenerative Diseases, University of Toronto, Canada.

¹⁴⁴Laboratory of Statistical Immunology, Immunology Frontier Research Center (WPI-IFReC), Osaka University, Suita, Japan.

¹⁴⁵Integrated Frontier Research for Medical Science Division, Institute for Open and Transdisciplinary Research Initiatives, Osaka University, Suita, Japan.

¹⁴⁶ Fondazione IRCCS Istituto Neurologico Carlo Besta, Milan, Italy.

¹⁴⁷RIKEN Center for Integrative Medical Sciences, Yokohama, Japan.

¹⁴⁸Division of Neurogenetics and Molecular Psychiatry, Department of Psychiatry and Psychotherapy, Faculty of Medicine and University Hospital Cologne, University of Cologne, Cologne, Germany.

¹⁴⁹Department of Psychiatry & Glenn Biggs Institute for Alzheimer's and Neurodegenerative Diseases, San Antonio, TX, USA.

***Equally contributing authors**

†Data used in the preparation of this article were obtained from the EABD, GR@ACE, DEGESCO, DemGene, EADI, GERAD, and Asian Parkinson's Disease Genetics consortia. As such, the investigators within these consortia contributed to the design and implementation of their respective consortium and/or provided data but did not participate in analysis or writing of this report. A full list of investigators is provided in the supplementary materials.

Correspondence should be addressed to:

Prof. Emmanuel Mignot, Center For Sleep Sciences and Medicine
3165 Porter Drive, #2178, Palo Alto CA 94304, USA
+1 650-725-6517 (tel), +1 650-725-7341 (fax)
mignot@stanford.edu

Abstract

Using genome-wide association data, we analyzed Human Leukocyte Antigen (HLA) associations in over 176,000 individuals with Parkinson's (PD) or Alzheimer's (AD) disease versus controls across ancestry groups. A shared genetic association was observed across diseases at rs601945 (PD: odds ratio (OR)=0.84; 95% confidence interval, [0.80; 0.88]; $p=2.2 \times 10^{-13}$; AD: OR=0.91[0.89; 0.93]; $p=1.8 \times 10^{-22}$), and with a protective HLA association recently reported in amyotrophic lateral sclerosis (ALS). Hierarchical protective effects of *HLA-DRB1*04* subtypes best accounted for the association, strongest with *HLA-DRB1*04:04* and *HLA-DRB1*04:07*, intermediary with *HLA-DRB1*04:01* and *HLA-DRB1*04:03*, and absent for *HLA-DRB1*04:05*. The same signal was associated with decreased neurofibrillary tangles (but not neuritic plaque density) in postmortem brains and was more strongly associated with Tau levels than A β 42 levels in the cerebrospinal fluid. Finally, protective *HLA-DRB1*04* subtypes strongly bound the aggregation-prone Tau PHF6 sequence, but only when acetylated at K311, a modification central to aggregation. An *HLA-DRB1*04*-mediated adaptive immune response, potentially against Tau, decreases PD, AD and ALS risk, offering the possibility of new therapeutic avenues.

Alzheimer's disease (AD), Parkinson's disease (PD), Amyotrophic Lateral Sclerosis (ALS) and other neurodegenerative diseases are responsible for considerable morbidity and mortality. With incidence rising with aging, these also represent a growing societal challenge. Pathophysiology involves accumulation of Tau (neurofibrillary tangles) and Amyloid- β -rich (amyloid plaques) aggregates in AD, α -synuclein-rich aggregates (Lewy bodies) in PD and TDP-43 aggregates in ALS, although co-presence of these aggregates may occur. Other diseases such as some Frontotemporal Dementias (FTD) and Progressive Supranuclear Palsy (PSP) also involve Tau aggregates. Consensus is also growing that Tau may also play a key role in PD^{1,2} and ALS^{3,4}. Here we show that Human Leukocyte Antigen (HLA) DRB1*04 protects against AD, PD and ALS, three prototypical neurodegenerative diseases, and that *HLA-DRB1*04* selectively binds the K311-acetylated epitope of the PHF6 sequence of the microtubule-associated protein Tau. Presence of DRB1*04 was also associated with lower CSF Tau and less neurofibrillary tangles in AD subjects. As K311-acetylated PHF6 is known to seed Tau aggregation, we propose that improved immune clearance of Tau occurs in DRB1*04 subjects, slowing or reducing neurodegeneration. Targeting this epitope through vaccination or immunotherapy may have preventive or therapeutic potential in multiple neurodegenerative diseases.

Innate immune responses and microglial involvement have long been implicated in neurodegenerative diseases⁵⁻⁷. More recently, a role for adaptive immunity in PD, AD and other neurodegenerative diseases has also been outlined through genetic⁸⁻¹¹ and immunological studies¹²⁻¹⁶. A cornerstone of the adaptive immune response is the highly polymorphic HLA system (also called the Major Histocompatibility Complex, MHC) located on human chromosome 6. *HLA* genes encode a set of proteins that bind peptides derived from foreign or self-antigens, allowing recognition by T cells and subsequent coordination of immune responses. In this context, PD, AD and ALS have genome-wide association study (GWAS) associations in the HLA class II region, within a region containing HLA DR and DQ, two tightly linked set of genes. These genes form α/β heterodimers composed of DRA with either *HLA-DRB1*, *HLA-DRB3*, *HLA-DRB4* or *HLA-DRB5* gene products for DR molecules, and of *HLA-DQA1* and *HLA-DQB1* gene products for DQ molecules. *HLA-DRA* is almost invariant, while all other genes are highly polymorphic, notably in exon 2, a region that projects residues within a so-called HLA

binding groove that functionally binds a 9-residue sequence using molecular pockets that host the P1, P4, P6 and P9 residues (HLA binding register) of the peptide. For the remaining P2, P3, P5, P7 and P8 residues, the amino acid side chain is presented to CD4⁺ T cells, which in turn orchestrate an immune response through T cell receptor (TCR) activation. Additional amino acids flanking the 9-mer core can also modulate HLA binding¹⁷, although weakly. Depending on one's specific HLA, individuals present distinct repertoires of bound peptides to CD4⁺ T cells, so that the HLA system is how the immune system sees and reacts to foreign and self-antigens in different individuals.

Although initially attributed to *HLA-DRB1*15:01*, recent GWAS studies have shown that the HLA signal in PD marks *HLA-DRB1*04*^{18–20}, while in AD and ALS, the signal remains uncharacterized^{8,9,11,21} or also assigned to *HLA-DRB1*15:01*^{9,22}. Additionally, a comparison of healthy controls and individuals with neurodegenerative disorders showed that a complex polyclonal T cell response develops against α -synuclein, Tau, and TDP-43^{12–14,23}, proteins involved in pathological aggregates. Whether or not these responses are epiphenomenal, contribute to, or protect against neurodegeneration is unknown, although T cell responses to α -synuclein may occur early in PD^{13,14}. Similarly, polyclonal autoantibodies targeting Tau or α -synuclein are detectable in both AD/PD patients and controls, without clear evidence of pathological involvement^{15,16}.

To better understand the involvement of HLA in neurodegenerative diseases, we gathered GWAS data available in PD and AD, refining the signal to the HLA subtype level through HIBAG imputation²⁴ and fine mapping studies. Because HLA signals are best dissected across ancestry groups, as first shown in narcolepsy with HLA-DQ²⁵, we included Europeans, Asians^{26–28}, Latinos²⁹ and African Americans^{30,31} (**Supplementary Table 1** for samples involved). Here we show that subtypes of *HLA-DRB1*04* protect against both PD and AD potentially by presenting acetylated epitopes of PHF6 sequences of the microtubule-associated protein Tau to CD4⁺ T cells. As these epitopes are known to seed Tau aggregation, we propose that improved immune clearance of Tau ensues, reducing pathology. Targeting this epitope through vaccination or immunotherapy may have preventive or therapeutic potential.

Colocalization of HLA SNP signals in AD and PD across ethnic groups

Two recent large studies in PD^{18,19} have shown that the HLA signal in PD is best summarized by a primary protective effect of *HLA-DRB1* amino acids 13H and 33H shared by all *HLA-DRB1**04 subtypes. *HLA-DRB1* amino acids 11V also showed a strong association; this amino acid is shared by *HLA-DRB1**04 and *HLA-DRB1**10:01, a subtype not associated with the disease. To extend on this, we meta-analyzed samples from North and South America, Europe and East Asia, thereby expanding the sample size to a total of 55,554 PD and PD-proxy cases and 1,454,443 controls (**Supplementary Table 1**). Asian samples were added because of the differential *HLA-DRB1**04 subtype distribution in Asians versus Europeans (key haplotypes distribution by ancestry, **Extended Data Figure 1**). The regional HLA association plot confirmed a primary effect driven by rs504594 (odds ratio (OR) = 0.84; 95% confidence interval [CI] [0.80; 0.88]; $p=1.83 \times 10^{-13}$) in PD (locuszoom, **Extended Data Figure 2**), with high association with *HLA-DRB1**04-specific amino acid 13H/33H across all ancestry groups (lead variant linkage disequilibrium with various *HLA-DRB1**04 subtypes and key amino acids across ancestry groups, **Extended Data Figure 3**) and disappearance of the signal after rs504594 conditioning¹⁹. This confirmed our initial findings in a larger and more diverse multi-ancestry sample. In contrast to PD, the HLA signal present in AD has not been finely characterized^{8,9,21}. To further examine this, we analyzed the region across diverse ancestry groups in 121,371 AD and proxy-AD cases and 410,989 controls from North America, Europe, Africa, and East Asia (**Supplementary Table 1** for description of subsamples). As shown in **Extended Data Figure 2**, the signal peaked at rs35472547 (OR = 0.91; 95% CI [0.89; 0.93]; $p=9.7 \times 10^{-23}$). The AD and PD signals colocalize in Europeans and across ancestry groups, with rs601945 as the best candidate representative of both signals (**Figure 1**, posterior probability of colocalization, PP4 = 99.5%).

Fine mapping studies implicate protective effect of specific *HLA-DRB104 subtypes in AD and PD**

We next conducted HLA imputation and HLA-DR~DQ analysis in both diseases separately and jointly, as no heterogeneity was found (**Table 1**). As reported in PD^{18,19}, *HLA-DRB1* 13H or 33H (two *HLA-DRB1**04 amino acids in complete linkage disequilibrium, **Extended Data Figure 3**) gave the highest association signal in both diseases. *HLA-*

*DQB1*03:02*, an allele highly linked with multiple *HLA-DRB1*04* subtypes (**Extended Data Figure 1**), was also associated, but less strongly (**Table 1**), suggesting a primary effect of *HLA-DRB1*. Further, various *HLA-DRB1*04* subtypes had hierarchical effects on susceptibility. Specifically, *HLA-DRB1*04:04* and *HLA-DRB1*04:07* conferred the strongest protection, followed by weaker effects of *HLA-DRB1*04:01* and *HLA-DRB1*04:03*, and no effect for *HLA-DRB1*04:05* and *HLA-DRB1*04:06* (**Table 1**). The absence of association was notable for *HLA-DRB1*04:05*, which is a frequent *HLA-DRB1*04* subtype in Asians. Although *HLA-DRB1*04:05* shares amino acids 13H or 33H, it is distinct from common European *HLA-DRB1*04:01*, *HLA-DRB1*04:02*, *HLA-DRB1*04:04* and Latino *HLA-DRB1*04:07* subtypes because of a D to S substitution at position 57. An additional weaker predisposing effect of the HLA haplotype *DRB1*01:01~DQAI*01:01~DQB1*05:01* was also observed in AD and was nominally significant in PD with the same direction of effect (**Table 1**). No other genome wide significant effect was observed (**Supplementary Tables 2 and 3**), notably with *HLA-DRB1*07:01* or *HLA-DRB1*09:01*, subtypes which are linked with accessory allele *HLA-DRB4*01*, also present on *HLA-DRB1*04* haplotypes. Of note, *HLA-DRB1* is more expressed than other DRBs, DQ and DP, and is generally the immunodominant response of CD4 cells^{32,33}. Further, accessory *HLA-DRB3/4/5* genes also commonly share a binding repertoire with primary *HLA-DRB1* genes and are typically minor components of HLA Class II immune responses^{32,33}.

Tau-pathology is reduced in AD individuals with *HLA-DRB1*04* subtypes

How could an *HLA-DRB1*04* subtype-specific association be involved in AD? To investigate this question, we first used neuropathological information of 7,259 postmortem samples of European ancestry available through the Religious Orders Study and Memory and Aging Project³⁴ and the National Institute on Aging - Alzheimer's Disease Center cohorts 1 to 7³⁵, looking at the effect of rs601945 on Tau Braak staging and neuritic plaques density in US-based pathological samples. As shown in **Table 2**, a strong association of rs601945, and by extension, *HLA-DRB1*04* 13H and *HLA-DRB1*04* alleles (**Supplementary Table 4**) with decreased neurofibrillary tangles, but not amyloid plaques, was observed, suggesting the involvement of Tau. The analysis of cerebrospinal fluid

(CSF) A β 42 and Tau levels in 8,074 subjects of European ancestry independently confirmed this observation. In CSF, rs601945 and *HLA-DRBI*04:04* were significantly associated with significant lower levels of phosphorylated- and total- Tau (**Table 2**), but only weakly associated with increased A β 42 levels. Interestingly, *HLA-DRBI*04 13H* was also associated with an older age of onset in AD (**Supplementary Table 4**).

The same HLA effect is associated with decreased risk in other neurodegenerative diseases

The HLA locus association with AD and PD was found to colocalize with the protective HLA signal in ALS¹¹, with PP4 = 94.6%, and PP4 = 60.6%, respectively (**Figure 1**). PP4 between PD and ALS is below the classic 80% level to confirm colocalization, which is likely due to the absence of lead variants from our PD GWAS in the ALS GWAS summary statistics¹¹ (**Extended Data Figure 2**). We hypothesize that improved quality control and imputation on the TOPMed reference panel would strengthen colocalization. It's worth noting that using summary statistics from a smaller PD GWAS in Europeans, van Rheenen et al.¹¹ reported PP4 = 80.4% for PD vs. ALS.

In addition, studying a subset of autopsied individuals with dementia and with either Lewy Body, AD pathology or both pathologies, rs601945 shows a nominally significant protective association in the AD only pathology group and concordant protective effects in the Lewy Body only pathology group and in the dual pathology group (though smaller sample sizes here resulted in non-significant results, **Table 2**). This protective association was also observed in the largest GWAS to date of Lewy body dementia that included a mix of clinically diagnosed and pathologically confirmed cases (OR=0.91 [0.83; 1.01], p = 0.07). Taken together, these results indicate that the HLA locus may be involved in a common immune response across these neurodegenerative diseases.

Immune response against post-translationally modified proteins

Based on these results, we hypothesized that a *HLA-DRBI*04*-restricted adaptive immune response directed against Tau may be protective in AD and other neurodegenerative diseases. However, how could *only HLA-DRBI*04*-restricted responses show a protective effect? Tau, like other proteins involved in neurodegeneration, is highly post-

translationally-modified (PTM) through phosphorylation and acetylation, phenomena that likely predispose Tau to aggregation. In autoimmune diseases, PTMs (such as citrullination of fibrinogen for rheumatoid arthritis) are frequently found in culprit autoantigens. Further, PTMs contribute to reduced self-tolerance as these are not presented in the thymus for negative selection³⁶. This likely explains the strong polyclonal T cell response observed in controls and AD/PD patients against Tau, β -amyloid and α -synuclein^{12,37,38}. A similarly broad B cell response against Tau and α -synuclein is also reported in controls and patients^{15,16}. As mentioned above, prior work has outlined strong polyclonal CD4⁺ T cell responses against α -synuclein, β -amyloid and Tau peptides when presented by various HLA subtypes in both cases and controls, thus it is unclear if these responses are effective in limiting disease or are a simple bystander effect¹². One recent publication also showed the presence of CD4⁺ and CD8⁺ T cells in the CSF of PD and AD patients³⁹, suggesting CD8⁺ T cell-mediated clearing of amyloid plaques.

Considering that CD4⁺ T cell and B cell responses against Tau are common and robust, we hypothesized that a specific *HLA-DRB1*04* restricted response, unlike other responses, may target a particular Tau epitope potentially important for aggregation. To test this hypothesis, we screened the most frequent PTM and non-PTM modified peptides for *HLA-DRB1*04* subtype-specific binding, using the highly protective *HLA-DRB1*04:04* subtype, the moderately protective *HLA-DRB1*04:01* subtype and the neutral *HLA-DRB1*04:05* subtype (**Figure 2, Supplementary Table 5**). Because PTMs are more likely to escape central tolerance³⁶ and thus would be best candidate, tau PTMs that are common and/or have been involved in the pathophysiology of AD⁴⁰ were included. As a control, alpha-synuclein, another commonly PTM-modified protein involved in PD was also tested (**Extended Data Figure 4, Supplementary Table 6**).

DRB1*04 preferentially binds acetylated PHF6, a sequence known to be important in aggregation seeding

Among over a thousand peptides tested, only a few peptides strongly bound *HLA-DRB1*04*, with PHF6 in Tau (R3/wt; ³⁰⁶VQIVY(acetylK)PVDLSKV³¹⁸) standing as the ideal candidate (**Figure 2**). The PHF6 sequence is located within the Microtubule Binding Area of Tau, known to be important for aggregation⁴¹. PHF6 creates core nucleation sites

that can, by themselves, induce formation of fibrils displaying the paired helical filament (PHF) morphology characteristic of neurofibrillary tangles^{41,42}. Most interestingly, PHF6 sequences only bind *HLA-DRB1*04* when K311 is acetylated. Further, acetylated sequences have significantly less affinity for *HLA-DRB1*04:05* versus other subtypes (*HLA-DRB1*04:04* = *HLA-DRB1*04:01* > *HLA-DRB1*04:03* > *HLA-DRB1*04:06* > *HLA-DRB1*04:05*), the same hierarchy observed in the case/control association results, with cores predicted to strongly bind *HLA-DRB1*04:04* (**Figure 2, Extended Data Figures 5 and 6**)^{43,44}. This is most likely because serine in molecular pocket P9 is known to reduce binding to *HLA-DRB1*04:05* in comparison to other *HLA-DRB1*04* subtypes^{43,44} (**Extended Data Figure 5**). Additional PTMs in the area, such as acetylated K317, do not alter binding, although the presence of phosphoserine at S305, another frequent PTM, slightly reduces PHF6 binding (**Figure 2**). Other peptides were found to bind *HLA-DRB1*04* in both Tau (**Figure 2**) and α -synuclein (**Extended Data Figure 4**), but in no other case a PTM was necessary for epitope binding. A strong predicted binding for both acetylated and unacetylated PHF6 motifs was also observed with accessory gene *HLA-DRB4*01* (**Extended Data Figure 6**), but the absence of association with *HLA-DRB1*07:01* and *HLA-DRB1*09:01*, whose haplotypes are in linkage with *HLA-DRB4*01*, exclude its involvement (**Supplementary Table 7**).

Discussion

The fact that *HLA-DRB1*04* only binds *acetylated* forms of PHF6 strongly favors involvement of this epitope in the protective effect of *HLA-DRB1*04* in AD. With K317 located nearby, the K311 PTM of PHF6 is the most differentiating Tau PTM found in AD versus control brains⁴⁴. Further, K311 acetylation has been shown by multiple investigators to promote aggregation of PHF6 *in vivo*⁴⁵, *in vitro*⁴⁶ and *in silico*⁴⁷, while K311 carbamylation is inhibitory⁴⁸. Crystallography studies have also shown that acetylated PHF6 dominates in the formation of long fibrils as in neurofibrillary tangles of AD^{49,50}. Finally, *HLA-DRB1*04*-associated subtypes are the *only* frequent HLA-DR and DQ subtypes with predicted high affinity for this epitope (**Extended Data Figure 6**), likely explaining why *HLA-DRB1*04*, and no other subtypes, mediate this effect. Acetylation at the K311 Tau residue may be mediated by SIRT1 and/or HDAC6, current therapeutic

targets in AD^{45,51}. Similarly, recent evidence suggests that reducing acetylated Tau is neuroprotective in brain injury⁵².

K311 is not only acetylated, but also ubiquitinated^{53,54}, or succinylated⁵⁵, and the epitope trafficked to the NLRP3 inflammasome of microglial cells⁵⁶, where HLA class II presentation of Tau fragments by *HLA-DRB1*04* to T cells is also likely to occur⁵⁷. Involvement of microglial cells is also suggested by various GWAS association signals observed in AD⁵ and PD⁶. Although the ubiquitinated K311 epitope is unlikely to bind *HLA-DRB1*04* due to steric hinderance at P4, ubiquitination at K317 at P10 could further modulate *HLA-DRB1*04* binding and the effect of K311 succinylation on DRB1*04 binding is unknown. Additional experiments exploring *HLA-DRB1*04* subtype binding of PTM segments of PHF6 in various combinations will be needed to further this line of investigation.

Interestingly, besides PHF6, a homologous segment, PHF6* (R2/wt; ²⁷³GKVQIINKKLDL²⁸⁴) has similar pro-aggregation properties *in vitro*^{41,42,46}, with acetylation of K280 in PHF6* also promoting aggregation *in vitro*^{50,58}. Involvement of PHF6*, an earlier candidate for aggregation seeding, is however less clear *in vivo*, with acetylation of K280 being a rare PTM⁵⁴. Further, although predicted to also bind *HLA-DRB1*04* with a similar repertoire (with acetylated K280 in position 4) (**Supplementary Figure 1**), acetylated PHF6* sequences did not bind *in vitro* (**Supplementary Figure 2**), illustrating the limitation of *in silico* predictions.

Another less probable candidate mediating the protective effect of *HLA-DRB1*04* is in the C-terminal end of Tau, the ⁴⁴⁶LATLADEVS⁴⁵⁵ sequence. This sequence also binds *HLA-DRB1*04:04* > *HLA-DRB1*04:01* > *HLA-DRB1*04:05* as expected from our association studies. This region may also be relevant to AD pathogenesis, as C-terminal cleavage of Tau is an early event leading to aggregation^{54,59}. This C-terminal epitope is, however, also predicted to bind other frequent *HLA-DRB1* subtypes with similar affinity and core sequences (**Supplementary Figure 3**) and is thus a much less likely candidate.

Conclusion

Overall, our results indicate that a *HLA-DRB1*04*-subtype-specific adaptive immune response is protective against both AD and PD, with recent work suggesting the

same is true for ALS. Although it is impossible to exclude involvement of other proteins in this effect, a CD4⁺ T cell reactivity toward PHF6 fragments containing the acetylated K311 epitope of Tau is a strong candidate for mediating this effect, based on current knowledge. We hypothesize that this T cell reactivity facilitates early clearing of toxic tau aggregate seeds, for example, by recruiting B cells and generating an antibody response targeting the same epitope, or simply by facilitating T cell clearing of early aggregates (**Figure 3**). Tau's biology as a regulator of microtubule assembly in neurons is uniquely positioned to potentiate neurotoxicity across multiple diseases involving different aggregates, as reported here.

Our results also open the possibility that targeting Tau epitopes containing acetyl-K311 through chimeric antigen receptor T cells or antibodies could have therapeutic value. Further, vaccination with acetylated PHF6-like epitopes could reduce disease progression in *HLA-DRBI*04* individuals (~30% of the European population). It is noteworthy that antibodies, although not targeting acetyl-K311 per se, but regions adjacent within PHF6, have been shown to reduce CSF Tau and Tau pathology in animal models⁶⁰ and are being tested as a means of preventing autosomal dominant forms of AD⁶¹. Autoantibodies against Tau are also present in healthy and demented individuals^{15,16}, but epitope specificities have yet to be determined. HLA studies of other tauopathies with different aggregates may also help clarifying how Tau modifications within PHF6 or other aggregation-prone domains modulate susceptibility to other diseases^{41,42}. Tau may be an important modulator of neurodegeneration across multiple diseases.

References

1. Dourlen, P., Kilinc, D., Malmanche, N., Chapuis, J. & Lambert, J.-C. The new genetic landscape of Alzheimer's disease: from amyloid cascade to genetically driven synaptic failure hypothesis? *Acta Neuropathol* **138**, 221–236 (2019).
2. Lei, P. *et al.* Tau protein: relevance to Parkinson's disease. *Int J Biochem Cell Biol* **42**, 1775–1778 (2010).
3. Petrozziello, T. *et al.* Novel genetic variants in MAPT and alterations in tau phosphorylation in amyotrophic lateral sclerosis post-mortem motor cortex and cerebrospinal fluid. *Brain Pathology* **n/a**, e13035.
4. Strong, M. J., Donison, N. S. & Volkening, K. Alterations in Tau Metabolism in ALS and ALS-FTSD. *Front Neurol* **11**, 598907 (2020).
5. Li, Y. *et al.* Genomics of Alzheimer's disease implicates the innate and adaptive immune systems. *Cell Mol Life Sci* (2021) doi:10.1007/s00018-021-03986-5.
6. Andersen, M. S. *et al.* Heritability Enrichment Implicates Microglia in Parkinson's Disease Pathogenesis. *Ann Neurol* **89**, 942–951 (2021).
7. Keren-Shaul, H. *et al.* A Unique Microglia Type Associated with Restricting Development of Alzheimer's Disease. *Cell* **169**, 1276-1290.e17 (2017).
8. Bellenguez, C. *et al.* New insights on the genetic etiology of Alzheimer's and related dementia. *medRxiv* 2020.10.01.20200659 (2020) doi:10.1101/2020.10.01.20200659.
9. Kunkle, B. W. *et al.* Genetic meta-analysis of diagnosed Alzheimer's disease identifies new risk loci and implicates A β , tau, immunity and lipid processing. *Nature Genetics* **51**, 414–430 (2019).

10. Nalls, M. A. *et al.* Identification of novel risk loci, causal insights, and heritable risk for Parkinson's disease: a meta-analysis of genome-wide association studies. *The Lancet Neurology* **18**, 1091–1102 (2019).
11. van Rheenen, W. *et al.* Common and rare variant association analyses in amyotrophic lateral sclerosis identify 15 risk loci with distinct genetic architectures and neuron-specific biology. *Nat Genet* **53**, 1636–1648 (2021).
12. Dhanwani, R. *et al.* T Cell Responses to Neural Autoantigens Are Similar in Alzheimer's Disease Patients and Age-Matched Healthy Controls. *Front Neurosci* **14**, 874 (2020).
13. Sulzer, D. *et al.* T cells from patients with Parkinson's disease recognize α -synuclein peptides. *Nature* **546**, 656–661 (2017).
14. Lindestam Arlehamn, C. S. *et al.* α -Synuclein-specific T cell reactivity is associated with preclinical and early Parkinson's disease. *Nat Commun* **11**, 1875 (2020).
15. Kuhn, I. *et al.* Serum titers of autoantibodies against α -synuclein and tau in child- and adulthood. *Journal of Neuroimmunology* **315**, 33–39 (2018).
16. Hromadkova, L. & Ovsepian, S. V. Tau-Reactive Endogenous Antibodies: Origin, Functionality, and Implications for the Pathophysiology of Alzheimer's Disease. *J Immunol Res* **2019**, 7406810 (2019).
17. Holland, C. J., Cole, D. K. & Godkin, A. Re-Directing CD4(+) T Cell Responses with the Flanking Residues of MHC Class II-Bound Peptides: The Core is Not Enough. *Front Immunol* **4**, 172 (2013).
18. Naito, T. *et al.* Trans-Ethnic Fine-Mapping of the Major Histocompatibility Complex Region Linked to Parkinson's Disease. *Mov Disord* **36**, 1805–1814 (2021).

19. Yu, E. *et al.* Fine mapping of the HLA locus in Parkinson’s disease in Europeans. *NPJ Parkinsons Dis* **7**, 84 (2021).
20. Hollenbach, J. A. *et al.* A specific amino acid motif of HLA-DRB1 mediates risk and interacts with smoking history in Parkinson’s disease. *Proc Natl Acad Sci U S A* **116**, 7419–7424 (2019).
21. Wightman, D. P. *et al.* A genome-wide association study with 1,126,563 individuals identifies new risk loci for Alzheimer’s disease. *Nat Genet* **53**, 1276–1282 (2021).
22. Steele, N. Z. R. *et al.* Fine-mapping of the human leukocyte antigen locus as a risk factor for Alzheimer disease: A case-control study. *PLoS Med* **14**, e1002272 (2017).
23. Lindestam Arlehamn, C. S. *et al.* Widespread Tau-Specific CD4 T Cell Reactivity in the General Population. *J Immunol* **203**, 84–92 (2019).
24. Zheng, X. *et al.* HIBAG—HLA genotype imputation with attribute bagging. *Pharmacogenomics J* **14**, 192–200 (2014).
25. Matsuki, K. *et al.* DQ (rather than DR) gene marks susceptibility to narcolepsy. *Lancet* **339**, 1052 (1992).
26. Foo, J. N. *et al.* Identification of Risk Loci for Parkinson Disease in Asians and Comparison of Risk Between Asians and Europeans: A Genome-Wide Association Study. *JAMA Neurol* **77**, 746–754 (2020).
27. Kang, S. *et al.* Potential Novel Genes for Late-Onset Alzheimer’s Disease in East-Asian Descent Identified by APOE-Stratified Genome-Wide Association Study. *J Alzheimers Dis* **82**, 1451–1460 (2021).

28. Shigemizu, D. *et al.* Ethnic and trans-ethnic genome-wide association studies identify new loci influencing Japanese Alzheimer's disease risk. *Transl Psychiatry* **11**, 151 (2021).
29. Loesch, D. P. *et al.* Characterizing the Genetic Architecture of Parkinson's Disease in Latinos. *Ann Neurol* **90**, 353–365 (2021).
30. Kunkle, B. W. *et al.* Novel Alzheimer Disease Risk Loci and Pathways in African American Individuals Using the African Genome Resources Panel: A Meta-analysis. *JAMA Neurol* **78**, 102 (2021).
31. Jun, G. R. *et al.* Transethnic genome-wide scan identifies novel Alzheimer's disease loci. *Alzheimers Dement* **13**, 727–738 (2017).
32. Yamamoto, F. *et al.* Capturing Differential Allele-Level Expression and Genotypes of All Classical HLA Loci and Haplotypes by a New Capture RNA-Seq Method. *Front Immunol* **11**, 941 (2020).
33. Grifoni, A. *et al.* Characterization of Magnitude and Antigen Specificity of HLA-DP, DQ, and DRB3/4/5 Restricted DENV-Specific CD4⁺ T Cell Responses. *Front Immunol* **10**, 1568 (2019).
34. Schneider, J. A. *et al.* Cognitive impairment, decline and fluctuations in older community-dwelling subjects with Lewy bodies. *Brain* **135**, 3005–3014 (2012).
35. Besser, L. M. *et al.* The revised national Alzheimer's coordinating center's neuropathology form-available data and new analyses. *Journal of Neuropathology and Experimental Neurology* **77**, 717–726 (2018).
36. Raposo, B. *et al.* T cells specific for post-translational modifications escape intrathymic tolerance induction. *Nat Commun* **9**, 353 (2018).

37. Singhania, A. *et al.* The TCR repertoire of α -synuclein-specific T cells in Parkinson's disease is surprisingly diverse. *Sci Rep* **11**, 302 (2021).
38. Lindestam Arlehamn, C. S. *et al.* α -Synuclein-specific T cell reactivity is associated with preclinical and early Parkinson's disease. *Nat Commun* **11**, 1875 (2020).
39. Gate, D. *et al.* Clonally expanded CD8 T cells patrol the cerebrospinal fluid in Alzheimer's disease. *Nature* **577**, (2020).
40. Wesseling, H. *et al.* Tau PTM Profiles Identify Patient Heterogeneity and Stages of Alzheimer's Disease. *Cell* **183**, 1699-1713.e13 (2020).
41. He, H., Liu, Y., Sun, Y. & Ding, F. Misfolding and Self-Assembly Dynamics of Microtubule-Binding Repeats of the Alzheimer-Related Protein Tau. *J Chem Inf Model* **61**, 2916–2925 (2021).
42. Inouye, H., Sharma, D., Goux, W. J. & Kirschner, D. A. Structure of Core Domain of Fibril-Forming PHF/Tau Fragments. *Biophysical Journal* **90**, 1774–1789 (2006).
43. Scally, S. W. *et al.* A molecular basis for the association of the HLA-DRB1 locus, citrullination, and rheumatoid arthritis. *J Exp Med* **210**, 2569–2582 (2013).
44. Ting, Y. T. *et al.* The interplay between citrullination and HLA-DRB1 polymorphism in shaping peptide binding hierarchies in rheumatoid arthritis. *J Biol Chem* **293**, 3236–3251 (2018).
45. Trzeciakiewicz, H. *et al.* An HDAC6-dependent surveillance mechanism suppresses tau-mediated neurodegeneration and cognitive decline. *Nat Commun* **11**, 5522 (2020).
46. Ganguly, P. *et al.* Tau assembly: the dominant role of PHF6 (VQIVYK) in microtubule binding region repeat R3. *J Phys Chem B* **119**, 4582–4593 (2015).

47. Kim, Y.-C. & Jeong, B.-H. In Silico Evaluation of Acetylation Mimics in the 27 Lysine Residues of Human Tau Protein. *Curr Alzheimer Res* **16**, 379–387 (2019).
48. Guru KrishnaKumar, V., Baweja, L., Ralhan, K. & Gupta, S. Carbamylation promotes amyloidogenesis and induces structural changes in Tau-core hexapeptide fibrils. *Biochim Biophys Acta Gen Subj* **1862**, 2590–2604 (2018).
49. Vaquer-Alicea, J., Diamond, M. I. & Joachimiak, L. A. Tau strains shape disease. *Acta Neuropathol* **142**, 57–71 (2021).
50. Arakhamia, T. *et al.* Posttranslational Modifications Mediate the Structural Diversity of Tauopathy Strains. *Cell* **180**, 633-644.e12 (2020).
51. Park, S., Lee, J. H., Jeon, J. H. & Lee, M. J. Degradation or aggregation: the ramifications of post-translational modifications on tau. *BMB Rep* **51**, 265–273 (2018).
52. Shin, M.-K. *et al.* Reducing acetylated tau is neuroprotective in brain injury. *Cell* **184**, 2715-2732.e23 (2021).
53. Kontaxi, C., Piccardo, P. & Gill, A. C. Lysine-Directed Post-translational Modifications of Tau Protein in Alzheimer’s Disease and Related Tauopathies. *Front Mol Biosci* **4**, 56 (2017).
54. Wesseling, H. *et al.* Tau PTM Profiles Identify Patient Heterogeneity and Stages of Alzheimer’s Disease. *Cell* **183**, 1699-1713.e13 (2020).
55. Acosta, D. M., Mancinelli, C., Bracken, C. & Eliezer, D. Post-translational modifications within tau paired helical filament nucleating motifs perturb microtubule interactions and oligomer formation. *Journal of Biological Chemistry* **0**, (2021).

56. Panda, C. *et al.* Aggregated Tau-PHF6 (VQIVYK) Potentiates NLRP3 Inflammasome Expression and Autophagy in Human Microglial Cells. *Cells* **10**, 1652 (2021).
57. Carmona-Abellan, M. *et al.* Microglia is associated with p-Tau aggregates in the olfactory bulb of patients with neurodegenerative diseases. *Neurol Sci* **42**, 1473–1482 (2021).
58. Irwin, D. J. *et al.* Acetylated tau, a novel pathological signature in Alzheimer’s disease and other tauopathies. *Brain* **135**, 807–818 (2012).
59. Flores-Rodríguez, P. *et al.* The relationship between truncation and phosphorylation at the C-terminus of tau protein in the paired helical filaments of Alzheimer’s disease. *Frontiers in Neuroscience* **9**, 33 (2015).
60. Sankaranarayanan, S. *et al.* Passive immunization with phospho-tau antibodies reduces tau pathology and functional deficits in two distinct mouse tauopathy models. *PLoS One* **10**, e0125614 (2015).
61. Šimić, G. *et al.* Tau Protein Hyperphosphorylation and Aggregation in Alzheimer’s Disease and Other Tauopathies, and Possible Neuroprotective Strategies. *Biomolecules* **6**, 6 (2016).
62. Beecham, G. W. *et al.* The Alzheimer’s Disease Sequencing Project: Study design and sample selection. *Neurol Genet* **3**, e194 (2017).
63. Bennett, D. A. *et al.* Overview and findings from the rush Memory and Aging Project. *Current Alzheimer research* **9**, 646–63 (2012).
64. Le Guen, Y. *et al.* APOE missense variant R145C is associated with increased Alzheimer’s disease risk in African ancestry individuals with the APOE ϵ 3/ ϵ 4

genotype. 2021.10.20.21265141

<https://www.medrxiv.org/content/10.1101/2021.10.20.21265141v1> (2021)

doi:10.1101/2021.10.20.21265141.

65. Kang, S. *et al.* Potential Novel Genes for Late-Onset Alzheimer's Disease in East-Asian Descent Identified by APOE-Stratified Genome-Wide Association Study. *J Alzheimers Dis* **82**, 1451–1460 (2021).
66. Satake, W. *et al.* Genome-wide association study identifies common variants at four loci as genetic risk factors for Parkinson's disease. *Nat Genet* **41**, 1303–1307 (2009).
67. Bennett, D. A. *et al.* Overview and findings from the rush Memory and Aging Project. *Current Alzheimer research* **9**, 646–63 (2012).
68. Kunkle, B. W. *et al.* Genetic meta-analysis of diagnosed Alzheimer's disease identifies new risk loci and implicates A β , tau, immunity and lipid processing. *Nature Genetics* **51**, 414–430 (2019).
69. Najar, J. *et al.* Polygenic risk scores for Alzheimer's disease are related to dementia risk in APOE ϵ 4 negatives. *Alzheimer's & Dementia: Diagnosis, Assessment & Disease Monitoring* **13**, e12142 (2021).
70. Gogarten, S. M. *et al.* Genetic association testing using the GENESIS R/Bioconductor package. *Bioinformatics* **35**, 5346–5348 (2019).
71. Willer, C. J., Li, Y. & Abecasis, G. R. METAL: fast and efficient meta-analysis of genomewide association scans. *Bioinformatics* **26**, 2190–2191 (2010).
72. Giambartolomei, C. *et al.* Bayesian Test for Colocalisation between Pairs of Genetic Association Studies Using Summary Statistics. *PLOS Genetics* **10**, e1004383 (2014).

73. van Rheenen, W. *et al.* Common and rare variant association analyses in amyotrophic lateral sclerosis identify 15 risk loci with distinct genetic architectures and neuron-specific biology. *Nat Genet* **53**, 1636–1648 (2021).
74. Lim, J., Bae, S.-C. & Kim, K. Understanding HLA associations from SNP summary association statistics. *Sci Rep* **9**, 1337 (2019).
75. Luo, G. *et al.* Autoimmunity to hypocretin and molecular mimicry to flu in type 1 narcolepsy. *PNAS* **115**, E12323–E12332 (2018).

METHODS Online

Samples. Participants or their caregivers provided written informed consent in the original studies. The current study protocol was granted an exemption by the Stanford University institutional review board because the analyses were carried out on deidentified, off-the-shelf data; therefore, additional informed consent was not required.

The AD samples included in the analysis are part of the following datasets with phenotype, genotype ascertainment, and quality control described elsewhere^{9,28,30,8,60,61,62,63}: the European Alzheimer's Disease BioBank (EADB), The Genome Research @ Fundació ACE project (GR@ACE), Genetic and Environmental Risk in AD/Defining Genetic, Polygenic and Environmental Risk for Alzheimer's Disease Consortium (GERAD), the European Alzheimer's Disease Initiative (EADI), the Norwegian DemGene (DemGene), the Bonn study (Bonn), the Copenhagen City Heart Study (CCHS), the Alzheimer's Disease Genetics Consortium (ADGC), the Alzheimer Disease Sequencing Project (ADSP), the UK Biobank, the Gwangju Alzheimer's and Related Dementias (GARD) study, the Japanese Genetic Study Consortium for Alzheimer's Disease (JGSCAD) and National Center for Geriatrics and Gerontology (NCGG) both from Niigata University.

The PD samples included in the analysis are part of the following datasets for which the phenotyping, genotyping and quality control has been described elsewhere^{10,18,19,26,29,66}: International Parkinson's Disease Genomics Consortium (IPDGC) NeuroX dataset, McGill University (McGill), National Institute of Neurological Disorders and Stroke (NINDS) Genome-Wide genotyping in Parkinson's Disease, NeuroGenetics Research Consortium (NGRC), Oslo Parkinson's Disease Study (Oslo), Parkinson's Progression Markers Initiative (PPMI), Autopsy-Confirmed Parkinson Disease GWAS Consortium (APDGC), the UK Biobank, East Asians samples from Japan, China, Singapore, Taiwan, and Hong-Kong (EastAsians-PD), 23andMe, and the Latin American Research Consortium on the Genetics of Parkinson's Disease (LARGE-PD).

The samples assessed for AD and Lewy-body neuropathology included genetic data from the Rush Religious Orders Study and Memory and Aging Project (ROSMAP)⁶⁷ and from the Alzheimer's Disease Center (ADC) cohorts 1 to 7 parts of the ADGC⁶⁸, and

neuropathological assessment followed procedures described respectively in Naito et al.³⁴ and in the National Alzheimer's Coordinating Center (NACC) postmortem evaluation protocol³⁵.

The samples with CSF biomarkers included in the analysis for which phenotype, genotype ascertainment, and quality control is described elsewhere^{8,69}, are mostly part of the EADB. The remaining of this dataset includes samples originating from the Gothenburg H70 Birth Cohort studies and clinical AD samples from Sweden.

Genome-wide association at the *HLA* locus and colocalization between AD and PD.

Given the known signal at HLA in AD GWAS^{8,68} and PD GWAS¹⁰. We aimed at refining the signal at the HLA locus using a multi-ancestry meta-analysis design. We considered a region, ± 1 MB around *HLA-DRB1*, on chromosome 6 from base pair positions (hg38) 31578952 to 33589718. For the PD local-GWAS at the HLA locus, we meta-analyzed the summary statistics from the largest available GWAS to date in European ancestry¹⁰ (distributed without 23andMe), with the Latino-Amerindian GWAS from Kunkle et al.²⁹ and the Asian GWAS from Kang et al.²⁶. For the AD local-GWAS at the HLA locus, we meta-analyzed the summary statistics the largest available GWAS to date in European ancestry⁸ (which did not include their Stage 2), with the Korean/Japanese GWAS from Satake et al.⁶⁵, the Japanese GWAS from Loesch et al.²⁸, and with in-house local-GWAS at the HLA locus on ADSP and ADGC data carried out by ancestry in European, Latino-Amerindian, African individuals, analyzed with a linear-mixed model as implemented in *GENESIS*⁷⁰ (see Statistical analysis section) adjusted for 6 PCs and sex. All meta-analyses were implemented with a fixed-effect inverse variance weighted design implemented in *METAL*⁷¹. Colocalization between the AD and PD HLA signals in these multi-ancestry meta-analyses was assessed using the Bayesian model implemented in *coloc*⁷² using default priors. We report the posterior probability of colocalization (PP4) between AD and PD associations on **Figure 1**. Given the high linkage disequilibrium ($r^2 > 0.70$) of the lead SNP at the HLA locus in the latest ALS GWAS⁷³ with the lead SNPs in our local-GWAS at HLA in AD and PD, we also tested the colocalization of these two diseases with ALS using the same method as described above.

Imputation and statistical analysis of HLA alleles, haplotypes, and amino acids. Two-field resolution alleles of *HLA-A*, *HLA-B*, *HLA-C* class I genes, and *HLA-DPB1*, *HLA-DQA1*, *HLA-DQB1*, and *HLA-DRB1* class II genes were imputed using R package HIBAG v1.22²⁴ for the following dataset: EADB, GR@ACE, GERAD, EADI, DemGene, Bonn, CCHS, UK Biobank, IPDGC, NINDS, NGRC, McGill, Oslo, PPMI, APDGC, LARGE-PD, ADSP, ADGC, GARD, NCGG. When available, training sets specific to ancestry (European, East Asian, Latino, African) and genotyping array were used, either available through HIBAG²⁴ or trained in-house as previously described¹⁹.

In the allele-level analyses, alleles with an imputation posterior probability lower than 0.5 were considered as undetermined as recommended by HIBAG developers. Each allele was considered as a variant and analyzed under a dominant model; supplementary methods provide details on the analysis per cohort.

In the haplotype-level analyses, only individuals with non-missing allele genotypes were included in the haplotype level analysis. Three-locus HLA class I or class II haplotypes were determined using the haplo.em function from the R haplo.stats package. Only haplotypes with posterior probability >0.5 and a carrier frequency of >1% were included in the analysis. Each haplotype was considered as a variant and analyzed under a dominant model; supplementary methods provide details on the analysis per cohort.

In the amino-acid-level analyses, HIBAG²⁴ was used to convert P-coded alleles to amino acid sequences for exon 2, 3 of HLA class I genes, and exon 2 of class II genes. Each amino acid was considered as a variant and analyzed under a dominant model; supplementary methods provide details on the analysis per cohort.

For the EastAsians-PD and 23andMe cohorts, the HLA alleles, haplotypes, amino acids statistics were derived from GWAS summary statistics data using the DISH software⁷⁴ as described in Naito et al.¹⁸.

The allele-, haplotype-, amino-acid- level analyses were respectively meta-analyzed separately between the two neurodegenerative diseases, and across diseases, using a fixed-effect inverse variance weighted design implemented in *METAL*⁷¹.

Tau peptide binding. Competition binding studies were conducted as previously described⁷⁵. In brief, Tau peptides at different concentrations were incubated with

DRB1*04:01, DRB1*04:03, DRB1*04:04, DRB1*04:05, or DRB1*04:06 (from the Emory University NIH core tetramer facility <http://tetramer.yerkes.emory.edu/support/faq>) for 3 days at 37°C together with biotinylated GAD or EBV (Bio-GAD, EBV). The reaction was quenched by adding neutralization buffer and then transferred into anti-DR antibody precoated a 96-well plate. DELFIA® time-resolved fluorescence (TRF) intensity was detected using a Tecan SPARK after adding Europium (Eu)-labelled streptavidin. Non-specific binding was removed through extensive wash. Each peptide was duplicated. Competitor Tau peptide with Eu TRF intensity that was lower than 25% and 25-50% of Bio-GAD or EBV epitope alone was considered strong binder and weak binder, respectively.

Funding and acknowledgments

This work was supported by the Michael J. Fox Foundation grant MJFF-020161 (EM, ZGO), National Institute of Health and National Institute of Aging grants AG060747 (MDG), AG066206 (ZH), AG066515 (ZH, MDG), the European Union's Horizon 2020 research and innovation program under the Marie Skłodowska-Curie (grant agreement No. 890650, YLG), the Alzheimer's Association (AARF-20-683984, MEB), and the Iqbal Farrukh and Asad Jamal Fund, a grant from the EU Joint Programme – Neurodegenerative Disease Research (European Alzheimer DNA BioBank, EADB; JPND), the Japan Agency for Medical Research and Development (JP21dk0207045, TI), the Einstein Center for Neurosciences in Berlin (SMY). Inserm UMR1167 is also funded by the Inserm, Institut Pasteur de Lille, Lille Métropole Communauté Urbaine, and the French government's LABEX DISTALZ program (development of innovative strategies for a transdisciplinary approach to Alzheimer's disease). Additional funders of individual investigators and institutions who contributed to data collection and genotyping are provided in the **Supplementary Materials**.

References

1. Dourlen, P., Kilinc, D., Malmanche, N., Chapuis, J. & Lambert, J.-C. The new genetic landscape of Alzheimer's disease: from amyloid cascade to genetically driven synaptic failure hypothesis? *Acta Neuropathol* **138**, 221–236 (2019).
2. Lei, P. *et al.* Tau protein: relevance to Parkinson's disease. *Int J Biochem Cell Biol* **42**, 1775–1778 (2010).
3. Petrozziello, T. *et al.* Novel genetic variants in MAPT and alterations in tau phosphorylation in amyotrophic lateral sclerosis post-mortem motor cortex and cerebrospinal fluid. *Brain Pathology* **n/a**, e13035.
4. Strong, M. J., Donison, N. S. & Volkening, K. Alterations in Tau Metabolism in ALS and ALS-FTSD. *Front Neurol* **11**, 598907 (2020).
5. Li, Y. *et al.* Genomics of Alzheimer's disease implicates the innate and adaptive immune systems. *Cell Mol Life Sci* (2021) doi:10.1007/s00018-021-03986-5.
6. Andersen, M. S. *et al.* Heritability Enrichment Implicates Microglia in Parkinson's Disease Pathogenesis. *Ann Neurol* **89**, 942–951 (2021).
7. Keren-Shaul, H. *et al.* A Unique Microglia Type Associated with Restricting Development of Alzheimer's Disease. *Cell* **169**, 1276-1290.e17 (2017).
8. Bellenguez, C. *et al.* New insights on the genetic etiology of Alzheimer's and related dementia. *medRxiv* 2020.10.01.20200659 (2020) doi:10.1101/2020.10.01.20200659.
9. Kunkle, B. W. *et al.* Genetic meta-analysis of diagnosed Alzheimer's disease identifies new risk loci and implicates A β , tau, immunity and lipid processing. *Nature Genetics* **51**, 414–430 (2019).

10. Nalls, M. A. *et al.* Identification of novel risk loci, causal insights, and heritable risk for Parkinson's disease: a meta-analysis of genome-wide association studies. *The Lancet Neurology* **18**, 1091–1102 (2019).
11. van Rheenen, W. *et al.* Common and rare variant association analyses in amyotrophic lateral sclerosis identify 15 risk loci with distinct genetic architectures and neuron-specific biology. *Nat Genet* **53**, 1636–1648 (2021).
12. Dhanwani, R. *et al.* T Cell Responses to Neural Autoantigens Are Similar in Alzheimer's Disease Patients and Age-Matched Healthy Controls. *Front Neurosci* **14**, 874 (2020).
13. Sulzer, D. *et al.* T cells from patients with Parkinson's disease recognize α -synuclein peptides. *Nature* **546**, 656–661 (2017).
14. Lindestam Arlehamn, C. S. *et al.* α -Synuclein-specific T cell reactivity is associated with preclinical and early Parkinson's disease. *Nat Commun* **11**, 1875 (2020).
15. Kuhn, I. *et al.* Serum titers of autoantibodies against α -synuclein and tau in child- and adulthood. *Journal of Neuroimmunology* **315**, 33–39 (2018).
16. Hromadkova, L. & Ovsepian, S. V. Tau-Reactive Endogenous Antibodies: Origin, Functionality, and Implications for the Pathophysiology of Alzheimer's Disease. *J Immunol Res* **2019**, 7406810 (2019).
17. Holland, C. J., Cole, D. K. & Godkin, A. Re-Directing CD4(+) T Cell Responses with the Flanking Residues of MHC Class II-Bound Peptides: The Core is Not Enough. *Front Immunol* **4**, 172 (2013).
18. Naito, T. *et al.* Trans-Ethnic Fine-Mapping of the Major Histocompatibility Complex Region Linked to Parkinson's Disease. *Mov Disord* **36**, 1805–1814 (2021).

19. Yu, E. *et al.* Fine mapping of the HLA locus in Parkinson’s disease in Europeans. *NPJ Parkinsons Dis* **7**, 84 (2021).
20. Hollenbach, J. A. *et al.* A specific amino acid motif of HLA-DRB1 mediates risk and interacts with smoking history in Parkinson’s disease. *Proc Natl Acad Sci U S A* **116**, 7419–7424 (2019).
21. Wightman, D. P. *et al.* A genome-wide association study with 1,126,563 individuals identifies new risk loci for Alzheimer’s disease. *Nat Genet* **53**, 1276–1282 (2021).
22. Steele, N. Z. R. *et al.* Fine-mapping of the human leukocyte antigen locus as a risk factor for Alzheimer disease: A case-control study. *PLoS Med* **14**, e1002272 (2017).
23. Lindestam Arlehamn, C. S. *et al.* Widespread Tau-Specific CD4 T Cell Reactivity in the General Population. *J Immunol* **203**, 84–92 (2019).
24. Zheng, X. *et al.* HIBAG—HLA genotype imputation with attribute bagging. *Pharmacogenomics J* **14**, 192–200 (2014).
25. Matsuki, K. *et al.* DQ (rather than DR) gene marks susceptibility to narcolepsy. *Lancet* **339**, 1052 (1992).
26. Foo, J. N. *et al.* Identification of Risk Loci for Parkinson Disease in Asians and Comparison of Risk Between Asians and Europeans: A Genome-Wide Association Study. *JAMA Neurol* **77**, 746–754 (2020).
27. Kang, S. *et al.* Potential Novel Genes for Late-Onset Alzheimer’s Disease in East-Asian Descent Identified by APOE-Stratified Genome-Wide Association Study. *J Alzheimers Dis* **82**, 1451–1460 (2021).

28. Shigemizu, D. *et al.* Ethnic and trans-ethnic genome-wide association studies identify new loci influencing Japanese Alzheimer's disease risk. *Transl Psychiatry* **11**, 151 (2021).
29. Loesch, D. P. *et al.* Characterizing the Genetic Architecture of Parkinson's Disease in Latinos. *Ann Neurol* **90**, 353–365 (2021).
30. Kunkle, B. W. *et al.* Novel Alzheimer Disease Risk Loci and Pathways in African American Individuals Using the African Genome Resources Panel: A Meta-analysis. *JAMA Neurol* **78**, 102 (2021).
31. Jun, G. R. *et al.* Transethnic genome-wide scan identifies novel Alzheimer's disease loci. *Alzheimers Dement* **13**, 727–738 (2017).
32. Yamamoto, F. *et al.* Capturing Differential Allele-Level Expression and Genotypes of All Classical HLA Loci and Haplotypes by a New Capture RNA-Seq Method. *Front Immunol* **11**, 941 (2020).
33. Grifoni, A. *et al.* Characterization of Magnitude and Antigen Specificity of HLA-DP, DQ, and DRB3/4/5 Restricted DENV-Specific CD4+ T Cell Responses. *Front Immunol* **10**, 1568 (2019).
34. Schneider, J. A. *et al.* Cognitive impairment, decline and fluctuations in older community-dwelling subjects with Lewy bodies. *Brain* **135**, 3005–3014 (2012).
35. Besser, L. M. *et al.* The revised national Alzheimer's coordinating center's neuropathology form-available data and new analyses. *Journal of Neuropathology and Experimental Neurology* **77**, 717–726 (2018).
36. Raposo, B. *et al.* T cells specific for post-translational modifications escape intrathymic tolerance induction. *Nat Commun* **9**, 353 (2018).

37. Singhania, A. *et al.* The TCR repertoire of α -synuclein-specific T cells in Parkinson's disease is surprisingly diverse. *Sci Rep* **11**, 302 (2021).
38. Lindestam Arlehamn, C. S. *et al.* α -Synuclein-specific T cell reactivity is associated with preclinical and early Parkinson's disease. *Nat Commun* **11**, 1875 (2020).
39. Gate, D. *et al.* Clonally expanded CD8 T cells patrol the cerebrospinal fluid in Alzheimer's disease. *Nature* **577**, (2020).
40. Wesseling, H. *et al.* Tau PTM Profiles Identify Patient Heterogeneity and Stages of Alzheimer's Disease. *Cell* **183**, 1699-1713.e13 (2020).
41. He, H., Liu, Y., Sun, Y. & Ding, F. Misfolding and Self-Assembly Dynamics of Microtubule-Binding Repeats of the Alzheimer-Related Protein Tau. *J Chem Inf Model* **61**, 2916–2925 (2021).
42. Inouye, H., Sharma, D., Goux, W. J. & Kirschner, D. A. Structure of Core Domain of Fibril-Forming PHF/Tau Fragments. *Biophysical Journal* **90**, 1774–1789 (2006).
43. Scally, S. W. *et al.* A molecular basis for the association of the HLA-DRB1 locus, citrullination, and rheumatoid arthritis. *J Exp Med* **210**, 2569–2582 (2013).
44. Ting, Y. T. *et al.* The interplay between citrullination and HLA-DRB1 polymorphism in shaping peptide binding hierarchies in rheumatoid arthritis. *J Biol Chem* **293**, 3236–3251 (2018).
45. Trzeciakiewicz, H. *et al.* An HDAC6-dependent surveillance mechanism suppresses tau-mediated neurodegeneration and cognitive decline. *Nat Commun* **11**, 5522 (2020).
46. Ganguly, P. *et al.* Tau assembly: the dominant role of PHF6 (VQIVYK) in microtubule binding region repeat R3. *J Phys Chem B* **119**, 4582–4593 (2015).

47. Kim, Y.-C. & Jeong, B.-H. In Silico Evaluation of Acetylation Mimics in the 27 Lysine Residues of Human Tau Protein. *Curr Alzheimer Res* **16**, 379–387 (2019).
48. Guru KrishnaKumar, V., Baweja, L., Ralhan, K. & Gupta, S. Carbamylation promotes amyloidogenesis and induces structural changes in Tau-core hexapeptide fibrils. *Biochim Biophys Acta Gen Subj* **1862**, 2590–2604 (2018).
49. Vaquer-Alicea, J., Diamond, M. I. & Joachimiak, L. A. Tau strains shape disease. *Acta Neuropathol* **142**, 57–71 (2021).
50. Arakhamia, T. *et al.* Posttranslational Modifications Mediate the Structural Diversity of Tauopathy Strains. *Cell* **180**, 633-644.e12 (2020).
51. Park, S., Lee, J. H., Jeon, J. H. & Lee, M. J. Degradation or aggregation: the ramifications of post-translational modifications on tau. *BMB Rep* **51**, 265–273 (2018).
52. Shin, M.-K. *et al.* Reducing acetylated tau is neuroprotective in brain injury. *Cell* **184**, 2715-2732.e23 (2021).
53. Kontaxi, C., Piccardo, P. & Gill, A. C. Lysine-Directed Post-translational Modifications of Tau Protein in Alzheimer’s Disease and Related Tauopathies. *Front Mol Biosci* **4**, 56 (2017).
54. Wesseling, H. *et al.* Tau PTM Profiles Identify Patient Heterogeneity and Stages of Alzheimer’s Disease. *Cell* **183**, 1699-1713.e13 (2020).
55. Acosta, D. M., Mancinelli, C., Bracken, C. & Eliezer, D. Post-translational modifications within tau paired helical filament nucleating motifs perturb microtubule interactions and oligomer formation. *Journal of Biological Chemistry* **0**, (2021).

56. Panda, C. *et al.* Aggregated Tau-PHF6 (VQIVYK) Potentiates NLRP3 Inflammasome Expression and Autophagy in Human Microglial Cells. *Cells* **10**, 1652 (2021).
57. Carmona-Abellan, M. *et al.* Microglia is associated with p-Tau aggregates in the olfactory bulb of patients with neurodegenerative diseases. *Neurol Sci* **42**, 1473–1482 (2021).
58. Irwin, D. J. *et al.* Acetylated tau, a novel pathological signature in Alzheimer’s disease and other tauopathies. *Brain* **135**, 807–818 (2012).
59. Flores-Rodríguez, P. *et al.* The relationship between truncation and phosphorylation at the C-terminus of tau protein in the paired helical filaments of Alzheimer’s disease. *Frontiers in Neuroscience* **9**, 33 (2015).
60. Sankaranarayanan, S. *et al.* Passive immunization with phospho-tau antibodies reduces tau pathology and functional deficits in two distinct mouse tauopathy models. *PLoS One* **10**, e0125614 (2015).
61. Šimić, G. *et al.* Tau Protein Hyperphosphorylation and Aggregation in Alzheimer’s Disease and Other Tauopathies, and Possible Neuroprotective Strategies. *Biomolecules* **6**, 6 (2016).
62. Beecham, G. W. *et al.* The Alzheimer’s Disease Sequencing Project: Study design and sample selection. *Neurol Genet* **3**, e194 (2017).
63. Bennett, D. A. *et al.* Overview and findings from the rush Memory and Aging Project. *Current Alzheimer research* **9**, 646–63 (2012).
64. Le Guen, Y. *et al.* APOE missense variant R145C is associated with increased Alzheimer’s disease risk in African ancestry individuals with the APOE $\epsilon 3/\epsilon 4$

genotype. 2021.10.20.21265141

<https://www.medrxiv.org/content/10.1101/2021.10.20.21265141v1> (2021)

doi:10.1101/2021.10.20.21265141.

65. Kang, S. *et al.* Potential Novel Genes for Late-Onset Alzheimer's Disease in East-Asian Descent Identified by APOE-Stratified Genome-Wide Association Study. *J Alzheimers Dis* **82**, 1451–1460 (2021).
66. Satake, W. *et al.* Genome-wide association study identifies common variants at four loci as genetic risk factors for Parkinson's disease. *Nat Genet* **41**, 1303–1307 (2009).
67. Bennett, D. A. *et al.* Overview and findings from the rush Memory and Aging Project. *Current Alzheimer research* **9**, 646–63 (2012).
68. Kunkle, B. W. *et al.* Genetic meta-analysis of diagnosed Alzheimer's disease identifies new risk loci and implicates A β , tau, immunity and lipid processing. *Nature Genetics* **51**, 414–430 (2019).
69. Najar, J. *et al.* Polygenic risk scores for Alzheimer's disease are related to dementia risk in APOE ϵ 4 negatives. *Alzheimer's & Dementia: Diagnosis, Assessment & Disease Monitoring* **13**, e12142 (2021).
70. Gogarten, S. M. *et al.* Genetic association testing using the GENESIS R/Bioconductor package. *Bioinformatics* **35**, 5346–5348 (2019).
71. Willer, C. J., Li, Y. & Abecasis, G. R. METAL: fast and efficient meta-analysis of genomewide association scans. *Bioinformatics* **26**, 2190–2191 (2010).
72. Giambartolomei, C. *et al.* Bayesian Test for Colocalisation between Pairs of Genetic Association Studies Using Summary Statistics. *PLOS Genetics* **10**, e1004383 (2014).

73. van Rheenen, W. *et al.* Common and rare variant association analyses in amyotrophic lateral sclerosis identify 15 risk loci with distinct genetic architectures and neuron-specific biology. *Nat Genet* **53**, 1636–1648 (2021).
74. Lim, J., Bae, S.-C. & Kim, K. Understanding HLA associations from SNP summary association statistics. *Sci Rep* **9**, 1337 (2019).
75. Luo, G. *et al.* Autoimmunity to hypocretin and molecular mimicry to flu in type 1 narcolepsy. *PNAS* **115**, E12323–E12332 (2018).

Table 1. *HLA-DRB1* alleles *HLA-DRB1*04:04* and *HLA-DRB1*04:01* are associated with a decreased risk of Parkinson’s and Alzheimer’s diseases. Effect sizes are reported as odds ratio (OR), with 95% confidence interval [CI], and significance (p-value). FreqC: frequency of carriers, N: number of individuals analyzed for a given allele/haplotype/amino acid, p-het: heterogeneity p-value.

	HLA	Parkinsons’ Disease (PD)				Alzheimer’s Disease (AD)				PD + AD		
		FreqC	N	OR	pval	FreqC	N	OR	pval	OR	pval	p-het
HLA Alleles	<i>HLA-DRB1*04:01</i>	0.196	1484656	0.92[0.89; 0.95]	2.4E-08	0.191	487237	0.93[0.9; 0.96]	6.5E-07	0.92[0.91; 0.94]	9.1E-14	0.56
	<i>HLA-DRB1*04:02</i>	0.019	1474730	0.92[0.85; 0.99]	0.02	0.022	155846	1.00[0.91; 1.10]	0.99	0.95[0.89; 1.01]	0.07	0.17
	<i>HLA-DRB1*04:03</i>	0.012	980868	0.89[0.81; 0.97]	0.01	0.071	8346	1.11[0.93; 1.31]	0.25	0.93[0.86; 1.01]	0.1	0.03
	<i>HLA-DRB1*04:04</i>	0.074	1475574	0.84[0.80; 0.88]	1.5E-11	0.073	476236	0.86[0.82; 0.90]	8.9E-12	0.85[0.82; 0.88]	9.3E-22	0.60
	<i>HLA-DRB1*04:05</i>	0.013	1507057	1.00[0.95; 1.05]	0.86	0.027	169839	0.99[0.92; 1.07]	0.77	0.99[0.95; 1.04]	0.76	0.88
	<i>HLA-DRB1*04:06</i>	0.046	32327	0.95[0.82; 1.09]	0.46	0.059	8346	1.00[0.83; 1.20]	0.99	0.97[0.86; 1.08]	0.55	0.66
	<i>HLA-DRB1*04:07</i>	0.021	526189	0.79[0.69; 0.91]	7.3E-04	0.019	474840	0.88[0.81; 0.96]	4.5E-03	0.86[0.79; 0.92]	2.7E-05	0.18
	<i>HLA-DRB1*04:10</i>	0.041	4853	0.91[0.67; 1.25]	0.57	0.032	8744	1.23[0.96; 1.58]	0.10	1.09[0.90; 1.33]	0.36	0.14
	<i>HLA-DRB1*01:01</i>	0.181	1485033	1.05[1.01; 1.09]	7.0E-03	0.186	487879	1.07[1.04; 1.10]	4.6E-07	1.06[1.04; 1.09]	1.4E-08	0.45
	<i>HLA-DQB1*03:02</i>	0.191	1501065	0.91[0.88; 0.93]	2.6E-14	0.190	510906	0.89[0.87; 0.91]	4.3E-19	0.9[0.88; 0.91]	1.5E-31	0.27
HLA Haplotypes	DRB1*04:01~DQA1*03:01~DQB1*03:02	0.088	1473386	0.95[0.92; 0.98]	3.6E-03	0.097	521560	0.91[0.87; 0.95]	6.5E-06	0.93[0.91; 0.96]	2.1E-07	0.11
	DRB1*04:01~DQA1*03:03~DQB1*03:01	0.12	1481518	0.98[0.97; 0.99]	5.2E-04	0.146	532448	0.98[0.94; 1.02]	0.24	0.98[0.97; 0.99]	2.4E-04	0.66
	DRB1*04:04~DQA1*03:01~DQB1*03:02	0.077	1475734	0.84[0.80; 0.89]	1.7E-10	0.092	524205	0.85[0.81; 0.89]	5.4E-11	0.85[0.82; 0.88]	3.8E-20	0.80
	DRB1*04:07~DQA1*03:01~DQB1*03:02	0.198	1498	0.58[0.44; 0.76]	6.1E-05	0.063	1865	0.75[0.47; 1.21]	0.23	0.67[0.53; 0.83]	3.7E-04	0.36
	DRB1*04:07~DQA1*03:03~DQB1*03:01	0.021	524845	0.87[0.73; 1.04]	0.12	0.019	519510	0.87[0.79; 0.97]	8.0E-03	0.87[0.8; 0.95]	2.1E-03	0.93
	DRB1*04:05~DQA1*03:03~DQB1*04:01	0.11	35369	0.99[0.92; 1.06]	0.76	0.227	10995	1.08[0.98; 1.18]	0.11	1.02[0.97; 1.08]	0.46	0.15
	DRB1*08:02~DQA1*03:01~DQB1*03:02	0.026	5602	1.10[0.76; 1.60]	0.61	0.026	10995	0.94[0.74; 1.19]	0.59	0.98[0.8; 1.19]	0.84	0.47
	DRB1*01:01~DQA1*01:01~DQB1*05:01	0.150	1485406	1.05[1.01; 1.09]	0.02	0.233	537567	1.08[1.05; 1.11]	3.4E-07	1.07[1.04; 1.09]	3.6E-08	0.31
<i>Amino-acid: HLA-DRB1 13H/ 33H</i>		0.300	1507057	0.89[0.87; 0.91]	9.3E-22	0.315	527932	0.91[0.89; 0.93]	5.9E-18	0.90[0.89; 0.92]	7.6E-38	0.31

Table 2. rs601945 is associated with reduced Tau in CSF and postmortem brain tissues, with protection against Lewy-body pathology, but association with increased Aβ42 and decreased neuritic plaques density is weak. p-Tau: phosphorylated Tau, t-Tau: total Tau, N: number of individuals, MAF: minor allele frequency, OR: odds ratio, β: parameter estimate, CI: confidence interval. Braak: Tau Braak staging, Neur: Neuritic plaques density.

Association of rs601945 with AD biomarkers in CSF						
Phenotype	Group	N	MAF	Z-score	Direction across cohorts	p-val
Aβ42	AD cases only	3127	0.139	1.92	+-----++	0.06
	MCI/controls only	2256	0.155	0.89	+-----+	0.37
	All individuals	8074	0.141	2.03	+-----++	0.04
p-Tau	AD cases only	2877	0.137	-2.67	-----+	7.7E-03
	MCI/controls only	2240	0.156	0.23	-+-----	0.82
	All individuals	7798	0.140	-3.43	-+-----	6.1E-04
t-Tau	AD cases only	3063	0.14	-3.58	-+-----	3.4E-04
	MCI/controls only	2243	0.154	0.13	-+-----	0.9
	All individuals	7993	0.141	-4.40	-+-----	1.1E-05
Association of rs601945 with Tau Braak staging and neuritic plaques density						
Phenotype	Group	N	MAF	β [95% CI]		p-val
Tau Braak staging	AD cases only	4966	0.151	-0.05[-0.09; 0.0]		0.07
	Controls only	1240	0.159	0.07[-0.06; 0.20]		0.32
	All individuals	7259	0.157	-0.10[-0.17; -0.02]		8.8E-03
Neuritic plaques density	AD cases only	3971	0.153	-0.02[-0.04; 0.01]		0.16
	Controls only	-	-	*Not sufficient variability in controls		-
	All individuals	5686	0.157	-0.04[-0.09; 0.01]		0.13
Association of rs601945 with AD and Lewy-Body						
Phenotype		N cases	N controls	MAF	OR [95% CI]	p-val
Lewy-body Dementia (Chia et al., 2021)		2591	4027	0.158	0.91 [0.83; 1.01]	0.068
AD pathology only vs no pathology		2191	1025	0.157	0.81 [0.69; 0.96]	0.013
Lewy-body pathology only vs no pathology		386	1025	0.157	0.81 [0.59; 1.09]	0.161
Dual pathology (AD and Lewy-body) vs no pathology		568	1025	0.157	0.84 [0.69; 1.03]	0.089

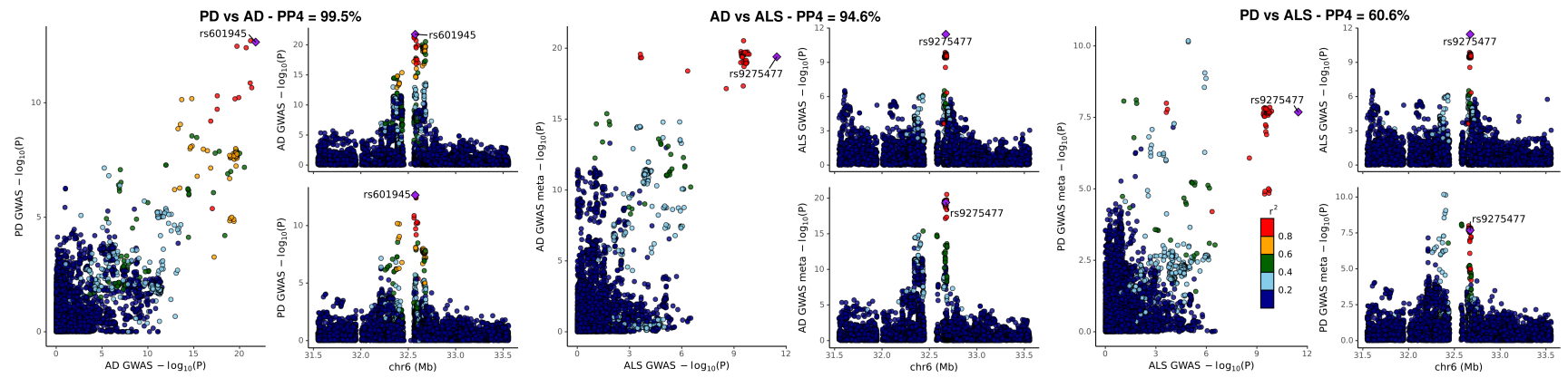


Figure 1. Colocalization of the HLA locus signal in Alzheimer's disease, Parkinson's disease and Amyotrophic Lateral Sclerosis.

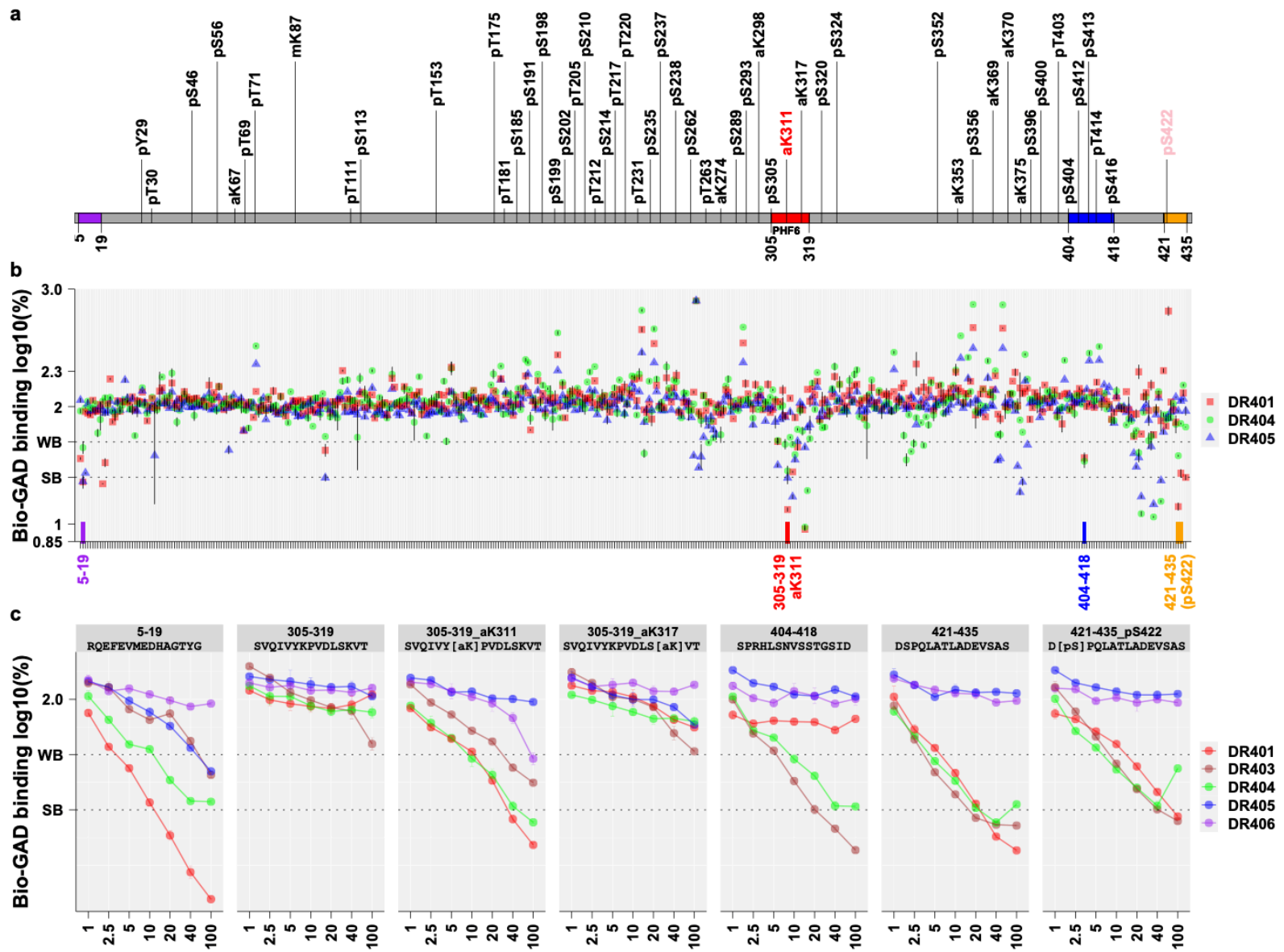


Figure 2. The pro-aggregation PHF6 region of Tau binds *HLA-DRB1*04* subtypes only when acetylated at K311. Fifteen-mer peptides (800 μ M) encompassing the entirety of all Tau isoforms (schematized in the top panel), overlapping across 11 residues, were screened for HLA-DRB1*04:01, HLA-DRB1*04:04 and HLA-DRB1*04:05 binding (see methods), with and without common PTMs as reported by Wesseling et al⁴⁰. Four regions (labelled in purple, red, blue, orange) containing strong HLA-DRB1*04 binders (log displacement <1-1.4, below 25% of baseline control) were further tested at various concentrations (bottom panel), showing three promising regions where binding was stronger with HLA-DRB1*04:04/ HLA-DRB1*04:01, intermediary with HLA-DRB1*04:03 and absent or weak with HLA-DRB1*04:05 and HLA-DRB1*04:06, a pattern similar to GWAS risk (Table 1). Among these regions, PHF6 ³⁰⁶VQIVY(acetylK)PVDLSK³¹⁷ that strongly binds HLA-DRB1*04:01, HLA-DRB1*04:03 and HLA-DRB1*04:04 only when post-translationally modified at K311. This segment is well known to seed Tau aggregation, and this process is increased in the presence of acetylK311.

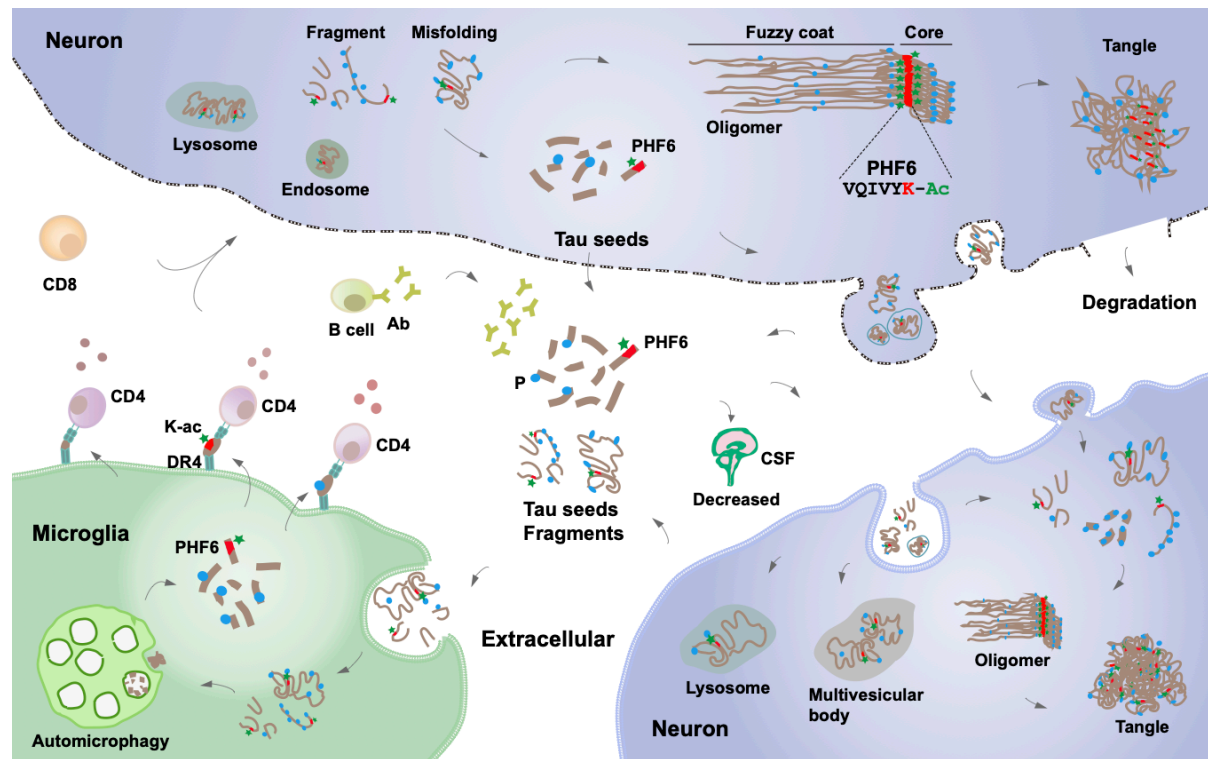
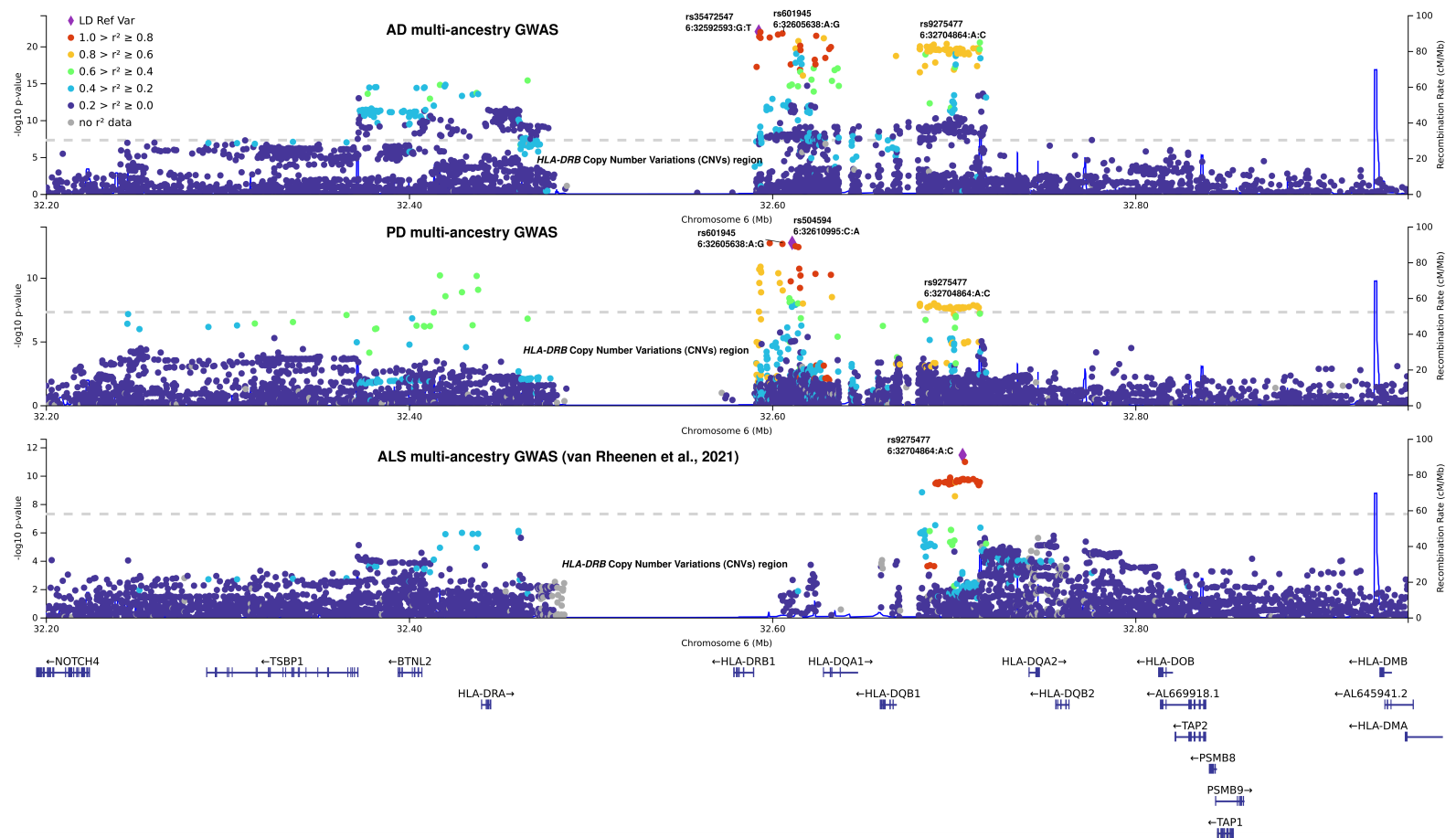


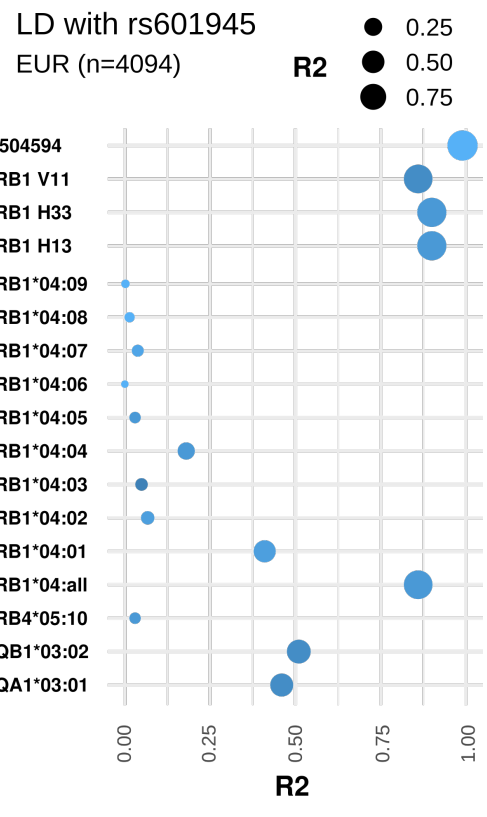
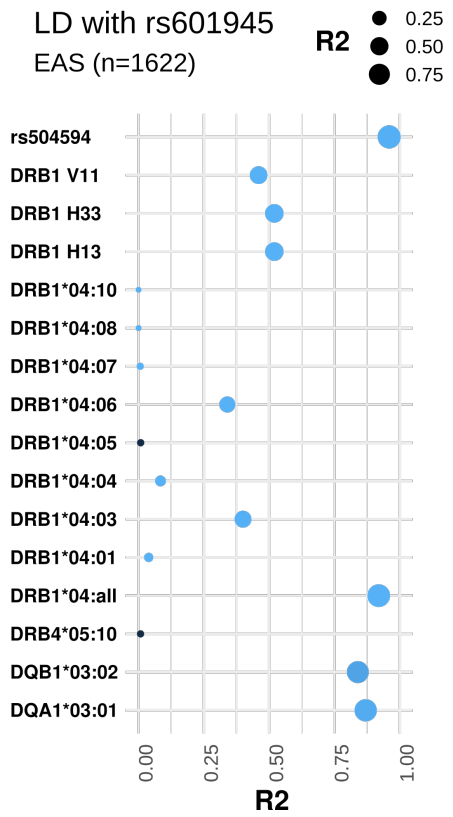
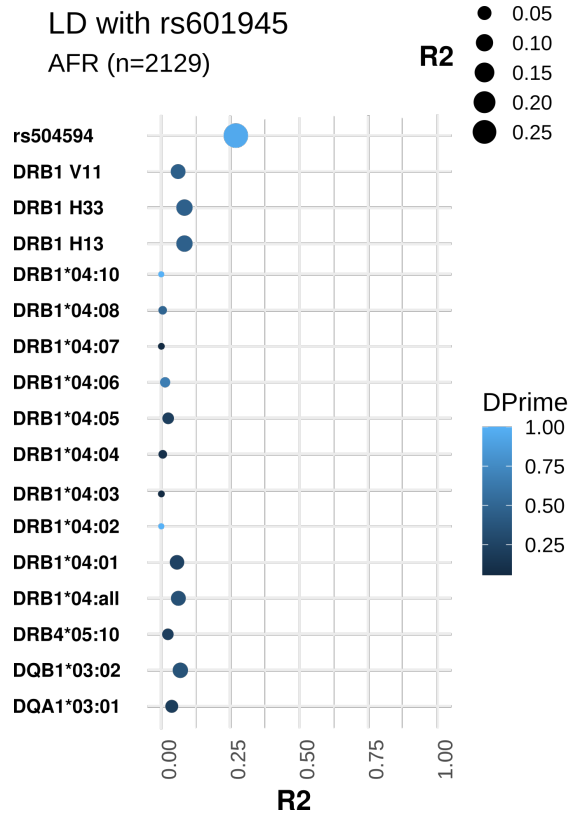
Figure 3. Immune clearance of Acetylated PHF6 Tau sequences reduces neurodegeneration in AD and PD. Pathological Tau seeds, soluble Tau fragments, or misfolded Tau present in the extracellular space are taken up and phagocytosed by activated microglia where it is processed. In addition to autophagy, resulting Tau peptide fragments, notably acetylated lysine (K-ac) 311 PHF6 are bound to HLA-DRB1*04:01 or HLA-DRB1*04:04 and the resulting HLA-peptide complexes presented by microglial cells (or other antigen presenting cells) to CD4⁺ T helper cells. CD4⁺ T cells trigger beneficial downstream immune responses perhaps involving CD8⁺ T and antibody producing B cells. These responses limit propagation of misfolded Tau and reduce neuropathology, also explaining reduced CSF Tau in *HLA-DRB1*04* individuals.

<i>HLA alleles</i>	<i>HLA haplotypes</i>	<i>Frequencies</i>				<i>Effect sizes</i>	
		European	Asian	Latino	African	Alzheimer's	Parkinson's
DRB1*04:01	DRB1*04:01~DQA1*03:01~DQB1*03:02	0.090	–	–	–	0.91[0.88; 0.94]	0.95[0.92; 0.98]
	DRB1*04:01~DQA1*03:03~DQB1*03:01	0.128	0.017	0.015	0.014	0.97[0.94; 1.00]	0.98[0.97; 0.99]
DRB1*04:04	DRB1*04:04~DQA1*03:01~DQB1*03:02	0.081	0.011	0.063	0.011	0.85[0.82; 0.89]	0.84[0.80; 0.89]
DQB1*03:02	DRB1*04:05~DQA1*03:03~DQB1*04:01	–	0.138	–	–	1.08[0.98; 1.18]	0.99[0.92; 1.06]
	DRB1*04:07~DQA1*03:01~DQB1*03:02	–	–	0.123	–	0.75[0.47; 1.21]	0.58[0.44; 0.76]
DRB1*04:05	DRB1*04:07~DQA1*03:03~DQB1*03:01	0.020	–	–	–	0.88[0.81; 0.96]	0.87[0.73; 1.04]
DRB1*04:07	DRB1*08:02~DQA1*03:01~DQB1*03:02	–	0.026	–	–	0.94[0.74; 1.19]	1.10[0.76; 1.60]

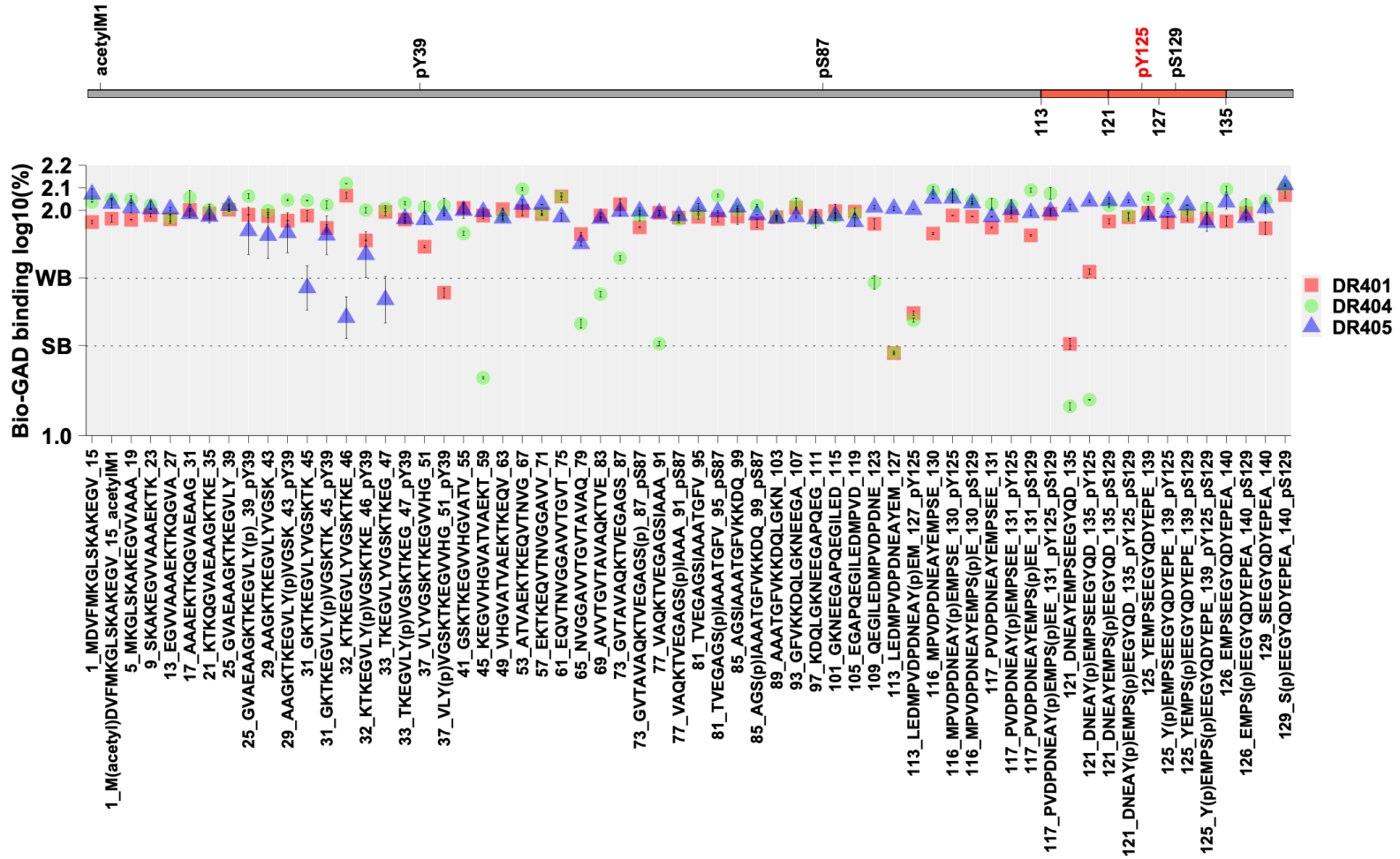
Extended Data Figure 1. Haplotypes harboring key *HLA-DRB1*04* subtypes and/or *HLA-DQB1*03:02*. Effect sizes highlighted in red were nominally significant ($p < 0.05$).



Extended Data Figure 2. Locuszoom plots of the local-HLA GWAS in multi-ancestry AD, PD, and ALS analyses. The lead variants in the AD and PD GWAS are missing in the summary statistics of the latest ALS GWAS¹¹, therefore the colocalization is imperfect.



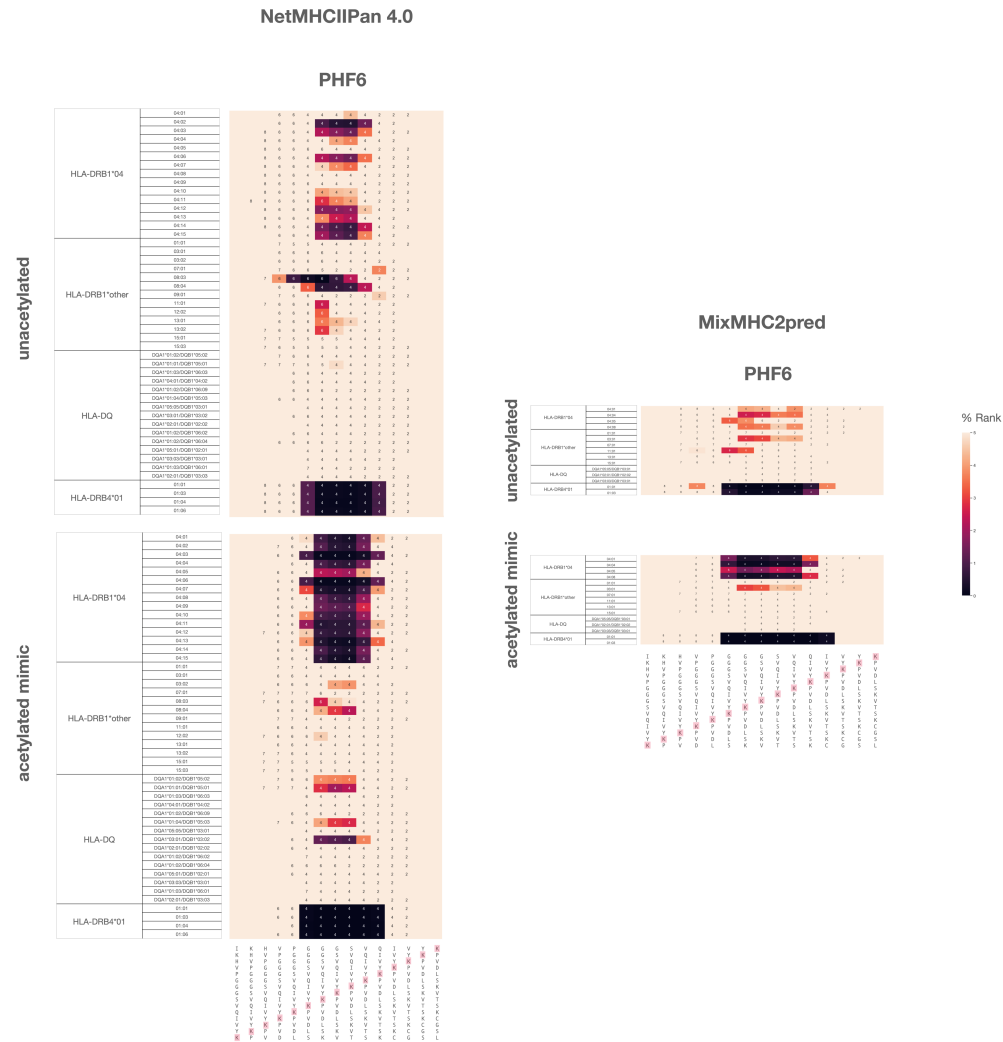
Extended Data Figure 3. Linkage disequilibrium of the lead SNP with *HLA-DRB1* amino acids and *HLA-DRB1*04* allele subtypes.



Extended Data Figure 4. *HLA-DRB1*04* subtypes do not show increased to α -synuclein common PTMs. Note that HLA-DRB1*04:04 and HLA-DRB1*04:01 strongly bind to the reference in the region 121-135 but their binding efficiency decreases in the presence of PTMs pY125 and/or pS129. Because PTMs *reduce* central tolerance, this is unlikely to facilitate immune responses. See methods for details.



Extended Data Figure 5. HLA-DRB1*04 binding motifs and PHF6 sensitivity. Residues of PHF6 in their unacetylated or PHF6-K311-acetylated forms are shown and their association with the binding motifs of (a) *HLA-DRB1*04:04*, (b) *HLA-DRB1*04:01* and (c) *HLA-DRB1*04:05*. Motifs are adapted from Scally et al., 2013⁴² (*HLA-DRB1*04:01* and *HLA-DRB1*04:04*) and Ting et al., 2018⁴³ (*HLA-DRB1*04:05*)



Extended Data Figure 6. HLA binding predictions for PHF6. Predictions were made using NetMHCIIpan 4.0⁷⁴ (left) using Mixed MHC pred 2 Server⁷⁵ (right). Cmap indicates a percentile rank generated by comparing the peptide's score against the scores of five million random 15 mers selected from SWISSPROT database (best score = 0%; worst score = 100%). 15mer

sequences incorporating 15mer sequences incorporating PHF6 in its unacetylated (bottom) or K311 mimic acetylated (top) form. Annotations within heat map show the position of the lysines of interest (K311 for PHF6, see highlighted sequences) within the 9mer core that is predicted to bind to the HLA molecule. 9mer cores excluding the lysine of interest were not predicted for binding and left blank. Note prediction of PHF6 binding to *HLA-DRB1*04* subtypes associated with neurodegeneration, confirmed by our in vitro experiments and the absence of binding to predicted to other common HLA DR and DQ subtypes. One exception is prediction of binding of the PHF6 sequence to *HLA-DRB4*01* alleles for both acetylated and non-acetylated PHF6 sequences. Accessory *HLA-DRB4* genes are more weakly expressed than *HLA-DRB1*. These genes are present not only on *HLA-DRB1*04* haplotypes, but also on most *HLA-DRB1*07:01* and *HLA-DRB1*09:01* haplotypes. As *HLA-DRB1*07:01* and *HLA-DRB1*09:01* haplotypes are not associated with AD or PD (**Supplementary Table 7**), *HLA-DRB4*01* is unlikely to be involved in disease predisposition, maybe because of low expression and binding to both acetylated and non-acetylated sequences resulting in central tolerance. The significance of this prediction, not verified through in vitro analysis is unknown.