

1 **Breakthrough SARS-CoV-2 infections after COVID-19 mRNA vaccination in MS patients on**  
2 **disease modifying therapies**

3 Maria Pia Sormani<sup>1,2</sup>, Irene Schiavetti<sup>1</sup>, Matilde Inglese<sup>2,3</sup>, Luca Carmisciano<sup>1</sup>, Alice Laroni<sup>2,3</sup>, Caterina  
4 Lapucci<sup>2,3</sup>, Valeria Visconti<sup>4</sup>, Carlo Serrati<sup>5</sup>, Ilaria Gandoglia<sup>6</sup>, Tiziana Tassinari<sup>7</sup>, Germana Perego<sup>8</sup>,  
5 Giampaolo Brichetto<sup>9</sup>, Paola Gazzola<sup>10</sup>, Antonio Mannironi<sup>11</sup>, Maria Laura Stromillo<sup>12</sup>, Cinzia Cordioli<sup>13</sup>,  
6 Doriana Landi<sup>14</sup>, Marinella Clerico<sup>15</sup>, Elisabetta Signoriello<sup>16</sup>, Jessica Frau<sup>17</sup>, Maria Teresa Ferrò<sup>18</sup>, Alessia  
7 Di Sapia<sup>19</sup>, Livia Pasquali<sup>20</sup>, Monica Ulivelli<sup>21</sup>, Fabiana Marinelli<sup>22</sup>, Marcello Manzino<sup>23</sup>, Graziella Callari<sup>24</sup>,  
8 Rosa Iodice<sup>25</sup>, Giuseppe Liberatore<sup>26</sup>, Francesca Caleri<sup>27</sup>, Anna Maria Repice<sup>28</sup>, Susanna Cordera<sup>29</sup>, Mario  
9 Alberto Battaglia<sup>30,31</sup>, Marco Salvetti<sup>32,33</sup>, Diego Franciotta<sup>34\*</sup>, Antonio Uccelli<sup>2,3\*</sup> and the CovaXiMS study  
10 group.

11 \*These authors have contributed equally to the manuscript.

12

- 13 1. Department of Health Sciences, Section of Biostatistics, University of Genova, Italy  
14 2. IRCCS Ospedale Policlinico San Martino, Genova, Italy  
15 3. Department of Neuroscience, Rehabilitation, Ophthalmology, Genetics, Maternal and Child Health  
16 (DINOEMI) and Center of Excellence for Biomedical Research (CEBR), University of Genoa, Genoa, Italy  
17 4. Laboratory Medicine, IRCCS Ospedale Policlinico San Martino, Genova, Italy  
18 5. Department of Neurology, Imperia Hospital, Imperia, Italy  
19 6. Neurology Unit, Galliera Hospital  
20 7. S.C. Neurologia - Ospedale Santa Corona Pietra Ligure (Sv)  
21 8. SC Neurologia ASL 4 Chiavarese  
22 9. AISM Rehabilitation Center, Genoa, Italy  
23 10. Centro Sclerosi Multipla S.C. Neurologia Asl 3 Genovese  
24 11. Department of Neurology, Sant'Andrea Hospital, La Spezia, Italy  
25 12. Clinica Neurologica e Malattie Neurometaboliche, Università degli Studi di Siena  
26 13. Centro Sclerosi Multipla ASST Spedali Civili di Brescia  
27 14. Multiple Sclerosis Clinical and Research Unit, Department of Systems Medicine, Tor Vergata University and  
28 Hospital, Rome, Italy  
29 15. Dipartimento di Scienze Cliniche e Biologiche, Università di Torino Università di Torino  
30 16. Centro Sclerosi Multipla, II Clinica Neurologica, Università della Campania Luigi Vanvitelli  
31 17. Centro Sclerosi Multipla Ospedale Binaghi Cagliari - ATS Sardegna, Università di Cagliari  
32 18. Neuroimmunology, Center for Multiple Sclerosis, Cerebrovascular Department, Neurological Unit, ASST  
33 Crema  
34 19. Department of Neurology, Regina Montis Regalis Hospital, Mondovì, Italy  
35 20. Department of Clinical and Experimental Medicine, Neurology Unit, University of Pisa, Italy  
36 21. Department of Medicine, Surgery and Neuroscience, University of Siena  
37 22. Multiple Sclerosis Center, Fabrizio Spaziani Hospital, via Armando Fabi, Frosinone – Italy  
38 23. Neurologia, Ospedale San Paolo, Savona, Italy  
39 24. UOC Neurologia e Centro SM Fondazione Istituto G. Giglio, Cefalù  
40 25. Clinica Neurologica, DSNRO Università Federico II di Napoli

- 41 26. Neuromuscular and Neuroimmunology Service, IRCCS Humanitas Research Hospital, Rozzano, Italy  
42 27. MS Center, Department of Neurology, F. Tappeiner Hospital Meran (BZ), Italy  
43 28. Department of Neurology 2, Careggi University Hospital, Florence, Italy  
44 29. Department of Neurology, Ospedale Regionale, Aosta, Italy  
45 30. Research Department, Italian Multiple Sclerosis Foundation, Genoa, Italy  
46 31. Department of Life Sciences, University of Siena, Italy  
47 32. Centre for Experimental Neurological Therapies (CENTERS), Department of Neurosciences, Mental Health  
48 and Sensory Organs, Sapienza University of Rome, Italy  
49 33. IRCCS Istituto Neurologico Mediterraneo Neuromed, Pozzilli, Italy  
50 34. Autoimmunology Laboratory, IRCCS Ospedale Policlinico San Martino, Genoa, Italy

51

52 Corresponding author: **Maria Pia Sormani**, Department of Health Sciences, Via Pastore 1, 16132,

53 University of Genova, Italy

54 Email: [mariapia.sormani@unige.it](mailto:mariapia.sormani@unige.it)

55 Tel: +39-3669937472

56

57 Keywords: Multiple Sclerosis, Covid-19 vaccination, Breakthrough infections

58 Number of characters in the title: 99

59 Number of words: 2611

60 Number of figures: 2

61 Number of Tables: 3

62 Number of references: 17

63

64 **Abstract**

65 **Background.** Patients with Multiple Sclerosis (pwMS) treated with anti-CD20 or fingolimod showed a  
66 reduced humoral response to mRNA-based SARS-CoV-2 vaccines, while the degree of such responses is  
67 unimpaired and similar in pwMS treated with other disease modifying therapies (DMTs), or untreated.  
68 However, the nature of the SARS-CoV-2 vaccine-induced immune response is based also on cellular  
69 immunity and there is emerging evidence that anti-SARS-CoV-2 specific CD4 and CD8 T cell responses can  
70 be detected after vaccination also in patients with low antibody levels. In this study we aimed to monitor the  
71 risk of breakthrough SARS-CoV-2 infection and to identify correlates of reduced protection in frail  
72 vaccinated pwMS on different DMTs.

73 **Methods.** We designed a long term clinical follow-up of the CovaXiMS (Covid-19 vaccine in Multiple  
74 Sclerosis) , a prospective multicenter cohort study enrolling pwMS scheduled for SARS-CoV-2 vaccination  
75 with mRNA vaccines and tested for SARS-CoV-2 antibodies before and after the second vaccine dose.  
76 These patients were followed with periodic phone calls up to a mean time of 6 months, and all the SARS-  
77 CoV-2 breakthrough infections were registered. The impact of DMTs on cumulative incidence of  
78 breakthrough Covid-19 cases was presented by Kaplan-Meier curves. A multivariable logistic model was run  
79 to assess factors associated to a higher risk of breakthrough infections.

80 **Findings.** 1705 pwMS (81.6% BNT162b2 and 18.4% mRNA-1273) had a full vaccination cycle (2 vaccine  
81 doses, 21/28 days apart). Of them, 1509 (88.5%) had blood assessment 4 weeks after the second vaccine  
82 dose. During follow-up, 23 breakthrough Covid-19 infections (cumulative incidence: 1.5%, SE=0.3%) were  
83 detected after a mean of 108 days after the second dose (range, 18-230). Of them, 9 were on ocrelizumab,  
84 one on rituximab, 4 on fingolimod, 6 on dimethyl-fumarate, one on teriflunomide, and 2 were untreated. Just  
85 two cases (a woman on ocrelizumab and a man on teriflunomide) required hospitalization. The probability to  
86 be infected was associated only with SARS-CoV-2 antibody levels measured after 4 weeks from the second  
87 vaccine dose (HR=0.63, p=0.007); an antibody level of 660 U/mL was calculated as the cutoff for higher risk  
88 of infection.

89 **Interpretation.** Our data show that the risk of breakthrough SARS-CoV-2 infections is mainly associated  
90 with reduced levels of the virus-specific humoral immune response.

91 **Funding.** FISM [2021/Special-Multi/001]; the Italian Ministry of Health grant ‘Progetto Z844A 5x1000’.  
92 Italian Ministry of Health: Ricerca Corrente to IRCCS Ospedale Policlinico San Martino.

93

## 94 **Introduction**

95 Evidence of the effect of vaccination against SARS-CoV-2, mainly on virus-specific serological responses<sup>1-3</sup>  
96 and, to a minor extent, on antigen-specific T cell response<sup>4,5</sup> in patients with MS (pwMS) treated with  
97 disease-modifying therapies (DMTs) is rapidly accumulating. There is wide consensus that the use of anti-  
98 CD20 monoclonal antibodies and fingolimod are associated with the lowest serum SARS-CoV-2 antibody  
99 concentrations, following the SARS-CoV-2 vaccines, whereas virus-specific humoral immune responses in  
100 pwMS on all the other DMTs, or untreated, were high and did not differ significantly from healthy controls<sup>1-</sup>  
101 <sup>4</sup>. On the other hand, there is also growing evidence that vaccinated pwMS treated with anti-CD20 generated  
102 robust virus specific CD4 and CD8 T cell responses<sup>4,5</sup>, while these are slightly reduced in fingolimod treated  
103 patients<sup>5</sup>. Indeed, Covid-19 vaccination is less immunogenic in immunocompromising conditions<sup>6</sup> and there  
104 is evidence that both serum SARS-CoV-2 antibody levels and the degree of vaccine-induced protection from  
105 Covid-19 decline with time since vaccination<sup>7,8</sup>. Thus, it is mandatory to monitor the incidence of  
106 breakthrough infections in pwMS, to better understand the role of humoral and cellular response to SARS-  
107 CoV-2 vaccination in preventing Covid-19 and its consequences. A preliminary follow-up study of 344 fully  
108 vaccinated people with multiple sclerosis on disease modifying therapy reported 13 breakthrough infections,  
109 10 of which were in patients under anti-CD20 therapy and the remaining 3 on fingolimod<sup>9</sup>.

110 We planned a clinical follow-up of the pwMS enrolled in the CovaXiMS (Covid-19 vaccine in Multiple  
111 Sclerosis)<sup>1</sup>, a prospective multicenter cohort study enrolling Covid-19 vaccinated pwMS, in whom SARS-  
112 CoV-2 antibodies were measured before the first and 4 weeks after the second vaccine dose. Aim of the  
113 study was to evaluate the incidence of breakthrough infections in relation to baseline characteristics and  
114 vaccination-elicited antibody levels, and to identify possible correlates of a reduced protection against the  
115 disease and its severe form.

116

## 117 **Patients and Methods**

118 *Study design and participants*

119 This was a clinical follow-up of an observational multicenter prospective study conducted in 35 Italian MS  
120 centers on pwMS undergoing the SARS-CoV-2 vaccination. Adult pwMS, with or without a previous  
121 SARS-CoV-2 infection, who were scheduled for SARS-CoV-2 vaccination, were included in the study.  
122 mRNA vaccines BNT162b2 (Pfizer Inc, and BioNTech), or mRNA-1273 (Moderna Tx, Inc) as per clinical  
123 practice and regional indications were allowed. Patients who agreed to provide a first blood test sample just  
124 before the vaccination and a second drawing one month after the last dose were enrolled in the study.  
125 Patients were then followed up, with monthly phone calls and visits as per clinical practice, and any new  
126 SARS-CoV-2 infection, or the occurrence of Covid-19 infection was recorded in a dedicated Case Report  
127 Form (CRF).

128 The study is done in compliance with the principles of the Declaration of Helsinki. The protocol is approved  
129 by the regional (CER Liguria: 5/2021 - DB id 11169- 21/01/2021) and the centralized national ethical  
130 committee AIFA/Spallanzani (Parere n 351, 2020/21). Written informed consent was obtained from all  
131 participants before starting any study procedures.

132

### 133 *Study procedures*

134 Eligible subjects were contacted by their neurologist 3 months after the second vaccine dose against Covid-  
135 19 and then contacted every month. Data of patients who had a PCR-confirmed Covid-19 diagnosis were  
136 collected in a dedicated CRF including information on symptoms and severity of the disease.

137

### 138 *Primary Outcome: breakthrough infection*

139 The primary objective of this analysis was to quantify the incidence of breakthrough SARS-CoV-2 infection  
140 among the vaccinated pwMS included in the CovaXiMS study. These conditions entail a PCR-confirmed  
141 swab, and a time lag of at least 14 days from the second vaccination dose.

142

### 143 *SARS-CoV-2 antibody measurement*

144 High-affinity pan-Ig antibodies to SARS-CoV-2 were measured by a centralized laboratory with a double-  
145 antigen sandwich-based electrochemiluminescence immunoassay (Elecsys®, Roche Diagnostics Ltd,  
146 Switzerland). Receptor-binding domain (RBD) antibodies were quantitatively measured to evaluate the  
147 humoral immune response to the two RBD-coding mRNA vaccines. RBD antibodies have been shown to  
148 positively correlate with SARS-CoV-2 neutralizing antibodies on neutralization assays<sup>10-11</sup>. Serum samples  
149 were shipped in dried ice by the centers and stored at -20°C until analysis.

#### 150 *Statistical analysis*

151 The cumulative incidence of breakthrough infections in the different DMT groups was reported by Kaplan-  
152 Meier survival curves. A multivariable Cox model was used to evaluate the impact of DMT class and  
153 antibody levels developed 4 weeks after the second vaccination dose on the risk of a breakthrough infection  
154 after adjusting for age, sex, BMI, EDSS level, disease duration, presence of comorbidities and vaccine type.  
155 The antibody levels were transformed on a Log10 scale, to normalize their distribution and according to  
156 previous literature<sup>1</sup>. A ROC curve (run on the subgroup of patients with at least 6 months of follow-up) was  
157 used to assess the best antibody level cut-off indicating a protective level against breakthrough infections.

#### 158 **Results**

159 Data were collected between March 4, 2021 and December 15, 2021. At the time of analysis, we had data on  
160 1705 pwMS (81.6% BNT162b2 and 18.4% mRNA-1273) who had a full vaccination cycle (2 vaccine doses,  
161 21/28 days apart). Of them, 1509 (88.5%) had blood assessment 4 weeks after the second vaccine dose. The  
162 median follow-up after the second vaccine dose was 222 days (range, 44-328). The patients' characteristics  
163 and the number of vaccinated patients in each DMT group are reported in Table 1.

164 Overall, we observed 23 Covid-19 cases during follow-up reported after a mean of 105 days after the second  
165 dose (range, 18-232). Nine of them were on ocrelizumab, one on rituximab, 4 on fingolimod, 6 on dimethyl-  
166 fumarate, one on teriflunomide, and 2 were untreated. The 8-month cumulative incidence of breakthrough  
167 infection was 1.5% (SE, 0.3%) (Figure 1, panel a). The incidence was higher in pwMS on ocrelizumab  
168 (4.0%, SE=1.0%), fingolimod (2.3%, SE=1.2%), rituximab (2.1%, SE=2.2%) or dimethyl-fumarate (2.3%,  
169 SE=0.9%), as compared to teriflunomide (1.0%, SE=1.0%), and untreated patients (0.8%, SE, 0.6%), and it

170 was zero for all the other therapies (figure 1, panel b). The log-rank test for heterogeneity among DMTs was  
171 borderline significant ( $p=0.052$ ). Grouping anti-CD20 (ocrelizumab and rituximab) vs fingolimod vs other  
172 drugs (Figure 1, panel c) gave a highly significant heterogeneity  $p<0.001$  (Figure 1, panel b).

173 At multivariable analysis the only significant factor associated to the risk of breakthrough infection was the  
174 antibody level after the second dose, with an HR of 0.63 (95%CI=0.45-0.87),  $p=0.007$ . This value indicates  
175 that the risk of breakthrough infection is reduced by 37% every X10 increase in the antibody level. The ROC  
176 curve applied to patients with at least 6 months of follow-up ( $n=1474$ , 97.7%) indicated a value of log  
177 antibody level of 2.82 (660 U/mL) as the best cutoff discriminating those at a higher risk of infection  
178 (AUC=0.71; sensitivity, 88%, specificity, 58%). Figure 2 reports the breakthrough infections in each DMT  
179 group and according to antibody levels. Two patients (one in ocrelizumab and one in fingolimod) who had a  
180 breakthrough infection, had their blood sample taken after Covid-19. Both patients developed very high  
181 antibody levels after Covid-19.

182 Two patients, a woman on ocrelizumab with a very low antibody titer (5 U/mL) and a man on teriflunomide  
183 with medium antibody titer (610 U/mL), were hospitalized after Covid-19, but recovered without the need  
184 for supplemental oxygen.

185

## 186 **Discussion**

187 The risk of both contracting SARS-CoV-2 infection and of not responding to Covid-19 vaccines is higher in  
188 pwMS on anti-CD20 monoclonal antibodies or fingolimod. Vaccine-induced protection from the disease is  
189 expected to waning with time since vaccination<sup>7,8</sup> and different levels of immunity impact on susceptibility to  
190 breakthrough infections. In this study we assessed the incidence of breakthrough infections in a large Italian  
191 cohort of patients fully vaccinated with mRNA vaccines. The cumulative incidence of breakthrough  
192 infection over a follow-up of 8 months was 1.5%, with some heterogeneities among groups treated with  
193 different DMTs. However, since the cases are few, a test for heterogeneity among more than 10 groups  
194 taking different DMTs has low statistical power. A Cox model, including the antibody level as a continuous  
195 variable and adjusted for the main baseline covariates, revealed that lower SARS-CoV-2 antibody levels as



196 the only relevant risk factor for breakthrough infections. The risk of infection decreases of about 37% for  
197 every 10 times-fold increase in the antibody levels. In this study, SARS-CoV-2 antibody level equal to, or  
198 lower than 660 U/mL are associated with higher risk of infection in the subsequent 6 months. Post-  
199 vaccination neutralizing antibody titers predicted the risk of breakthrough infection in health care workers<sup>12</sup>.  
200 However, no neutralizing or binding antibody threshold titer identified so far can predict the degree of  
201 protection, depending on unpredictable titer changes over time and on the strength of immunity at the  
202 moment when a subject is exposed. In addition, other SARS-CoV-2 infection risk modifiers, such as each  
203 patient's safety precautions and viral load exposure amount, can impact on the risk of Covid-19  
204 independently from antibody titers.

205 On the other hand, the main goal of vaccination is not to prevent infections, but rather to prevent the severe  
206 disease. In this respect, we observed just two breakthrough infections that caused Covid-19 requiring  
207 hospitalization followed by resolution within one week. The prevalence of hospitalization in our Italian  
208 Covid-19 cohort of pwMS in the pre-vaccination era was 12.8%<sup>13</sup> and therefore around 2 cases were  
209 expected out of the 22 infected patients. Therefore, these numbers are too low to draw conclusions from this  
210 observation.

211 Analogously to the other study on anti-CD20 treated patients following Covid-19 vaccination<sup>14</sup>, the age  
212 factor, which typically associate with lower antibody responses to Covid-19 vaccines<sup>15</sup>, did not have an  
213 independent role on influencing the risk of breakthrough infections in our pwMS cohort, when we take into  
214 account the antibody levels. This phenomenon appears to be evident in the general population too<sup>16</sup>.

215 This study has some limitations. First, incidence data of breakthrough infections in the general population, as  
216 well as those of non-breakthrough infections in unvaccinated people, were not available for comparing these  
217 rates with those of our pwMS cohort. In solid organ transplant recipients, the diminished antibody responses  
218 to SARS-CoV-2 resulted in 41-to-82-fold (depending on the statistical approach) higher risk of breakthrough  
219 infection vs general population<sup>17</sup>. Second, we have no data on SARS-CoV-2 molecular characterization, as  
220 the Delta variant reduces vaccine effectiveness<sup>17</sup>, but high enough SARS-CoV-2 antibody titers can protect  
221 against infection and severe outcomes<sup>18</sup>.

222 In conclusion, the results of this study suggest that the rates of breakthrough infections in pwMS on DMTs at  
223 least partially depends on the level of humoral immunity to SARS-CoV-2, which, is reduced in patients  
224 under specific DMTs and that declines over time. Larger cohorts are needed to understand the protective role  
225 of vaccination for severe Covid-19 in pwMS under different DMTs. It is likely that the protection from  
226 Covid-19 might increase after breakthrough infections, or after subsequent vaccine doses. Identifying the  
227 frequency, severity, and predisposing factors of breakthrough infections in frail patients may inform how to  
228 protect them with anticipates boosting doses of vaccines. The recommended safety precautions, such as  
229 masks and distancing, should remain a mainstay to reduce the incidence of SARS-CoV-2 infection.

### 230 **Acknowledgements**

231 Supported by FISM [2021/Special-Multi/001]; the Italian Ministry of Health grant ‘Progetto Z844A 5x1000’  
232 to the IRCCS Ospedale Policlinico San Martino (D.F.) and the Italian Ministry of Health: Ricerca Corrente  
233 to IRCCS Ospedale Policlinico San Martino. We thank Barbara Uggeri, Claudio Spallarossa, and Giovanni  
234 Rossi for their excellent laboratory assistance.

235

236 **References**

- 237 1. Sormani MP, Inglese M, Schiavetti I et al. Effect of SARS-CoV-2 mRNA vaccination in MS  
238 patients treated with disease modifying therapies. *EBioMedicine*. 2021 Oct;72:103581. doi:  
239 10.1016/j.ebiom.2021.103581.
- 240 2. Achiron A, Mandel M, Dreyer-Alster S, et al. Humoral immune response to COVID-19 mRNA  
241 vaccine in patients with multiple sclerosis treated with high-efficacy disease-modifying therapies.  
242 *Ther Adv Neurol Disord*. 2021. doi:10.1177/17562864211012835
- 243 3. Tallantyre EC, Vickaryous N, Anderson V et al. COVID-19 Vaccine Response in People with  
244 Multiple Sclerosis. *Ann Neurol* 2021; Oct 22. doi: 10.1002/ana.26251. Online ahead of print
- 245 4. Tortorella C, Aiello A, Gasperini C et al. Humoral- and T-Cell-Specific Immune Responses to  
246 SARS-CoV-2 mRNA Vaccination in Patients With MS Using Different Disease-Modifying  
247 Therapies. *Neurology* in press
- 248 5. Apostolidis SA, Kakara M, Painter MM, et al. Cellular and humoral immune responses following  
249 SARS-CoV-2 mRNA vaccination in patients with multiple sclerosis on anti-CD20 therapy. *Nat Med*.  
250 2021 Nov;27(11):1990-2001. doi: 10.1038/s41591-021-01507-2.
- 251 6. Kearns, P. et al. Examining the immunological effects of COVID-19 vaccination in patients with  
252 conditions potentially leading to diminished immune response capacity – The OCTAVE Trial. SSRN  
253 <https://doi.org/10.2139/ssrn.3910058> (2021)
- 254 7. X. Widge, A. T. et al. Durability of responses after SARS-CoV-2 mRNA-1273 vaccination. *N. Engl.*  
255 *J. Med.* 384, 80–82 (2021).
- 256 8. Y. Naaber, P. et al. Dynamics of antibody response to BNT162b2 vaccine after six months: a  
257 longitudinal prospective study. *Lancet Reg. Health Eur.* 10, 100208 (2021).
- 258 9. Rose DR, Mahadeem AZ, Carlson AK et al. Clinical features and outcomes of COVID-19 despite  
259 SARS-CoV-2 vaccination in people with multiple sclerosis. *Mult Scler J Exp Transl Clin*. 2021 Nov  
260 26;7(4):20552173211057110. doi: 10.1177/20552173211057110. eCollection 2021 Oct.
- 261 10. Kohmer N, Westhaus S, Rühl C, Ciesek S, Rabenau HF. Brief clinical evaluation of six high-  
262 throughput SARS-CoV-2 IgG antibody assays. *J Clin Virol*. 2020. doi:10.1016/j.jcv.2020.104480

- 263 11. Müller L, Ostermann PN, Walker A, et al. Sensitivity of anti-SARS-CoV-2 serological assays in a  
264 high-prevalence setting. *Eur J Clin Microbiol Infect Dis*. 2021. doi:10.1007/s10096-021-04169
- 265 12. Bergwerk, M. et al. Covid-19 breakthrough infections in vaccinated health care workers. *N. Engl. J.*  
266 *Med*. 385, 1474–1484 (2021).
- 267 13. Sormani MP, Schiavetti I, Carmisciano L et al. COVID-19 Severity in Multiple Sclerosis: Putting  
268 Data Into Context. *Neurol Neuroimmunol Neuroinflamm*. 2021 Nov 9;9(1):e1105. doi:  
269 10.1212/NXI.0000000000001105. Print 2022 Jan.
- 270 14. Natacha Madelon et al. Robust T cell responses in anti-CD20 treated patients following COVID-19  
271 vaccination: a prospective cohort study. *Clin Infect Dis*. 2021 Nov 17;ciab954. doi:  
272 10.1093/cid/ciab954. Online ahead of print
- 273 15. Lustig, Y. et al. BNT162b2 COVID-19 vaccine and correlates of humoral immune responses and  
274 dynamics: a prospective, single-centre, longitudinal cohort study in health-care workers. *Lancet*  
275 *Respir. Med*. 9, 999–1009 (2021).
- 276 16. Scobie, H. M. et al. Monitoring incidence of COVID-19 cases, hospitalizations, and deaths, by  
277 vaccination status - 13 U.S. Jurisdictions, April 4-July 17, 2021. *MMWR* 70, 1284–1290 (2021).
- 278 17. Tang, P. et al. BNT162b2 and mRNA-1273 COVID-19 vaccine effectiveness against the Delta  
279 (B.1.617.2) variant in Qatar. *Nat. Med*. <https://doi.org/10.1038/s41591-021-01583-4> (2021).
- 280 18. Bar-On, Y. M. et al. Protection of BNT162b2 vaccine booster against Covid-19 in Israel. *N. Engl. J.*  
281 *Med*. 385, 1393–1400 (2021).
- 282

283 **Figure legends**

284 **Figure 1:** Kaplan Meier survival curves displaying the cumulative probability of a breakthrough  
285 infection in the whole cohort (panel a), in each disease modifying therapy group (panel b) and in  
286 groups defined by patients treated by anti-CD20 drugs (ocrelizumab or rituximab), by fingolimod  
287 and other therapies (panel c).

288 **Figure 2:** Covid-19 cases (red dots) and severe Covid-19 cases (hospitalized) (red stars) according  
289 to disease modifying therapy and antibody level.

290

291 **Table 1: Baseline characteristics of patients with multiple sclerosis who received two vaccine**  
 292 **doses**

293  
 294

Characteristics	Overall (N = 1705)
<b>Age, years</b> (mean, SD)	46.1 (12.45)
<b>Females</b> (n, %)	1161 (68.1%)
<b>BMI, kg/m<sup>2</sup></b> (mean, SD)	24.1 (3.65)
<b>MS phenotype</b> (n, %)	
<i>Relapsing remitting</i>	1420 (83.3%)
<i>Secondary progressive</i>	158 (9.3%)
<i>Primary progressive</i>	127 (7.4%)
<b>MS disease duration, years</b> (median, IQR)	10.0 [5.0 – 15.6]
<b>EDSS</b> (median, IQR)	2.0 [1.0 – 4.0]
<b>MS treatment</b> (n, %)	
<i>Ocrelizumab</i>	272 (16.0%)
<i>Dimethyl fumarate</i>	267 (15.7%)
<i>Natalizumab</i>	199 (11.7%)
<i>Interferon</i>	192 (11.3%)
<i>Fingolimod</i>	173 (10.1%)
<i>Teriflunomide</i>	102 (6.0%)
<i>Glatiramer acetate</i>	102 (6.0%)
<i>Cladribine</i>	51 (3.0%)
<i>Rituximab</i>	48 (2.8%)
<i>Alemtuzumab</i>	23 (1.3%)
<i>Other</i>	26 (1.5%)
<i>Untreated</i>	250 (14.7%)
<b>Vaccine product</b> (n, %)	
<i>mRNA BNT162b2</i>	1347 (79.0%)
<i>mRNA-273</i>	314 (18.4%)
<i>Not specified</i>	44 (2.6%)

295  
 296 *MS=Multiple Sclerosis, BMI=Body Mass Index, SD=Standard Deviation, IQR=Interquartile Range,*  
 297 *EDSS=Expanded Disability Status Scale.*

298

299 **Table 2. Multivariable Cox regression model evaluating risk factors for breakthrough SARS-**  
300 **CoV-2 infections.**

Variable	Multivariable Analysis*	
	n=1500	
	HR (95% C.I.)	p
Antibody levels (log10)	0.64 (0.46-0.89)	0.009
Age (years)	0.98 (0.94-1.03)	0.44
Sex (Female vs Male)	0.51 (0.20-1.30)	0.16
EDSS	0.96 (0.73-1.26)	0.77
Vaccine (mRNA-1273 vs mRNA BNT162b2)	0.92 (0.31-2.75)	0.88

301

302 *HR=Hazard Ratio, C.I.=Confidence Interval, EDSS=Expanded Disability Status Scale*

303

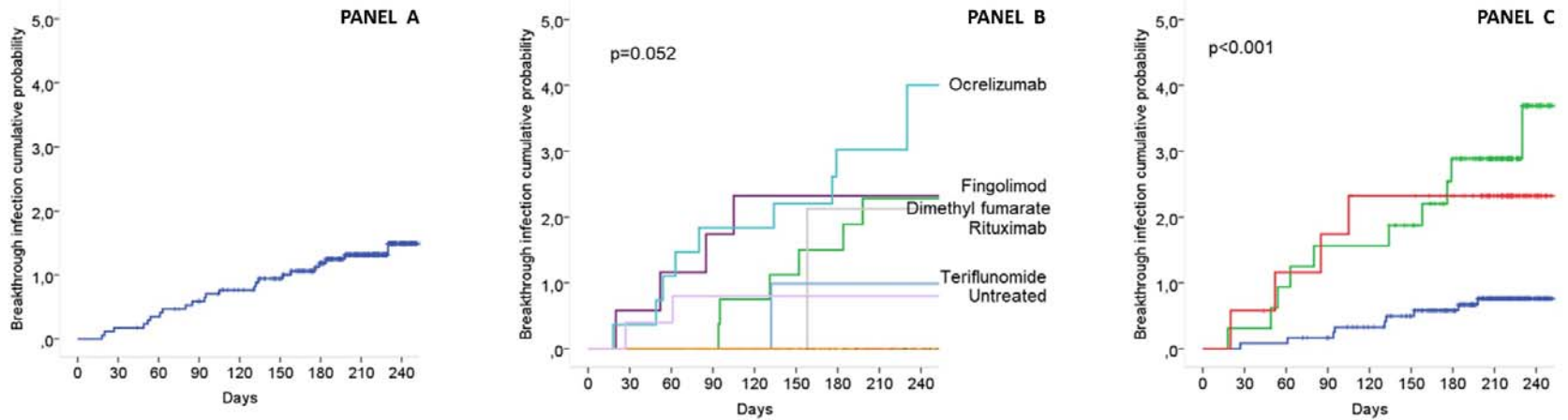
304

**Figure 1:** Kaplan Meier survival curves displaying the breakthrough infections cumulative probability overall in the vaccinated cohort (panel a), in

305

groups according to disease modifying therapy (panel b) and in groups according to treatment with anti-CD20, fingolimod and other drugs (panel c).

306



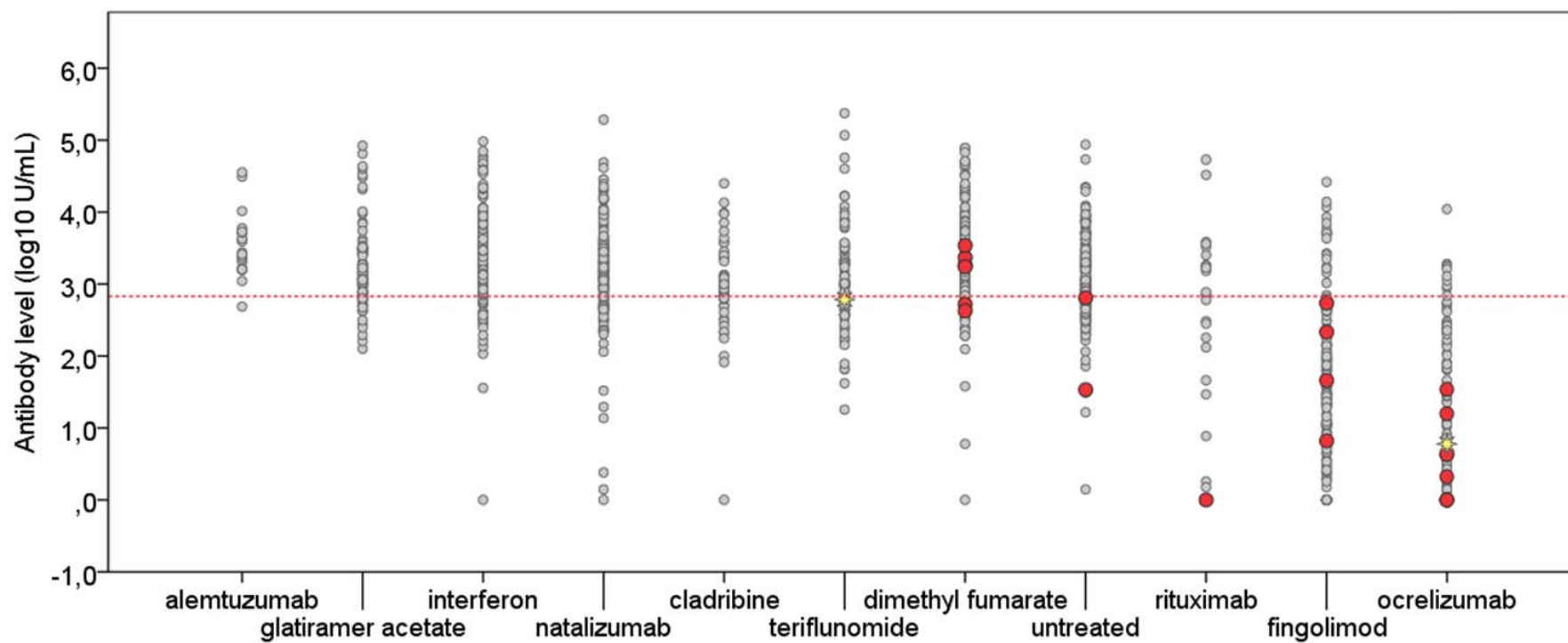
307



308

**Figure 2:** Covid-19 cases (red dots) and hospitalized Covid-19 cases (yellow stars) according to disease modifying therapy and antibody level

309



310