

1 **Temporal trends in hospitalizations and 30-day mortality in older patients**
2 **during the COVID pandemic from March 2020 to July 2021**

3 Sara Garcia-Ptacek MD, PhD^{1,2*}, Hong Xu MD, PhD^{1*}, Martin Annetorp MD², Viktoria Bäck
4 Jerlardtz MD³, Tommy Cederholm MD, PhD^{1,2}, Malin Engström MD⁴, Miia Kivipelto MD,
5 PhD^{1,2}, Lars Göran Lundberg MD⁵, Carina Metzner MD², Maria Olsson MD^{6,7}, Josefina
6 Skogö Nyvang MD, PhD⁸, Carina Sühl Öberg MD⁹, Elisabet Åkesson MD, PhD^{10,11}, Dorota
7 Religa MD, PhD^{1,2}, Maria Eriksdotter MD, PhD^{1,2}

9 ¹Division of Clinical Geriatrics, Department of Neurobiology, Care Sciences and Society,
10 Karolinska Institutet, Stockholm, Sweden

11 ²Theme Inflammation and Aging, Karolinska University Hospital, Stockholm, Sweden

12 ³Department of Geriatric medicine, Jakobsbergsgeriatriken, Stockholm, Sweden

13 ⁴Department of Geriatric medicine, Sabbatsbergsgeriatriken, Stockholm, Sweden

14 ⁵Department of Geriatric medicine, Dalengeriatriken Aleris Närsjukvård AB, Stockholm,
15 Sweden

16 ⁶Department of Geriatric medicine, Capio geriatrik Löwet, Stockholm, Sweden

17 ⁷Department of Geriatric medicine, Capio geriatrik Sollentuna, Stockholm, Sweden

18 ⁸Department of Geriatric medicine, Capio Geriatrik Nacka AB, Nacka, Sweden

19 ⁹Department of Geriatric medicine, Handengeriatriken, Aleris Närsjukvård AB, Stockholm,
20 Sweden

21 ¹⁰Division of Neurogeriatrics, Department of Neurobiology, Care Sciences and Society,
22 Karolinska Institutet, Stockholm, Sweden

23 ¹¹R&D unit, Stockholms Sjukhem, Stockholm, Sweden

24
25 *Contributed equally

26
27 **Correspondence to:**

28 Sara Garcia-Ptacek MD, PhD

29 Division of Clinical Geriatrics,

30 Department of Neurobiology, Care Sciences and Society,

31 Karolinska Institutet, NEO, Blickagången 16, 141 52, Huddinge, Stockholm

32 E-mail: sara.garcia-ptacek@ki.se

33
34 Hong Xu, MD PhD

35 Division of Clinical Geriatrics,

36 Department of Neurobiology, Care Sciences and Society,

37 Karolinska Institutet, NEO, Blickagången 16, 141 52, Huddinge, Stockholm

38 E-mail: hong.xu.2@ki.se

39
40 **Running Title:** Temporal trends, geriatric care, COVID-19 and non-COVID patients

41
42 **Word counts:**

43 Abstract: 337; Text: 2990; References:30; Tables:2; Figures:3

44

45

46

47 **KEY POINTS**

48 **Question:** Multiple previous reports in different countries and settings have shown higher case
49 fatality ratio or hospitalized case fatality ratio for COVID-19 in the first wave compared to the
50 second wave of the pandemic. However, less is known about how the COVID-19 waves
51 specifically affected the care of geriatric patients, including those with conditions other than
52 COVID. .
53

54 **Findings:** The total number of hospitalizations was 5,320 for COVID-19 and 32,243 for non-
55 COVID-cases. In COVID-patients, the 30-day mortality rate was highest at the beginning of the
56 first wave (29% in March-April 2020), reached 17% at the second wave peak (November-
57 December) followed by 11-13% in the third wave (March-July 2021). The mortality in non-
58 COVID geriatric patients showed a similar trend, but of lower magnitude (5-10%). During the
59 incidence peaks, COVID-19 hospitalizations displaced non-COVID geriatric patients.

60
61 **Meaning:** Hospital admissions and 30-day mortality after hospitalizations for COVID-19
62 increased in periods of high community transmission, albeit with decreasing mortality rates from
63 wave 1 to 3, with a possible vaccination effect in wave 3. Thus, the healthcare system could not
64 compensate for the high community spread of COVID-19 during the pandemic peaks, which also
65 led to displacing care for non-COVID geriatric patients. These results are important for planning
66 healthcare resources in future health emergencies.

67 **ABSTRACT**

68 **Importance:** Previous reports have suggested reductions in mortality risk from COVID-19
69 throughout the first wave of the COVID-19 pandemic. Mortality changes later in the
70 pandemic and pandemic effects on other types of geriatric hospitalizations are less studied.

71 **Objectives:** To describe the changes in hospitalizations and 30-day mortality in Stockholm
72 for patients 70+ receiving inpatient geriatric care for COVID-19 and other causes.

73 **Design:** Observational study. For patients 70 or older, we present the incidence of 30-day
74 mortality from COVID-19 in the Stockholm region, in relationship to geriatric
75 hospitalizations and 30-day mortality after admission for COVID-19 and other causes.

76 **Setting:** Hospitalizations for patients 70+ from geriatric clinics in Stockholm, Sweden
77 hospitalized for COVID-19 or other causes between March 2020 and July 31, 2021, were
78 included.

79 **Participants:** The total number of geriatric hospitalizations for patients 70+ was 5,320 for
80 COVID-19 and 32,243 for non-COVID-19 causes, corresponding to 4,565 individual
81 COVID-19 patients and 19,308 non-COVID-19 patients.

82 **Exposure(s):** The date of hospital admission to a geriatric clinic.
83 Main Outcome(s) and Measure(s): 30-day mortality after admission.

84 **Results:** In patients with COVID-19, the 30-day mortality rate was highest at the beginning of
85 the first wave (29% in March-April 2020), decreased as the first wave subsided (7% July-
86 August), increased again in the second wave (17% November-December), but failed to
87 increase as much in the third wave (11-13% March-July 2021). In non-COVID-19 geriatric
88 patients during the same period, the 30-day mortality presented a similar trend, but with a
89 smaller magnitude of variation (5 to 10%). The number of persons 70 or older testing positive
90 for COVID-19 in Stockholm reached two peaks in 2020 (April and December), fell in January
91 2021 and then increased again in March-April 2021.

92 **Conclusions and Relevance:** During the first and second waves, hospital admissions and 30-
93 day mortality after geriatric hospitalization for COVID-19 increased in periods of high
94 community transmission, although the mortality peak was lower in wave 2 than in wave 1.
95 The mortality for non-COVID geriatric cases was lower and more stable but also showed an
96 increase with the pandemic peaks.

97

98 **Key words:** COVID-19, geriatric, hospitalizations, 30-day mortality, displacing care

99

100

101

102 INTRODUCTION

103 During the first wave of the COVID-19 pandemic in Stockholm from March to July 2020,
104 mortality for COVID-19 patients hospitalized in geriatric clinics decreased over time.¹ It was
105 unclear at the time whether this was due to improved care or to patient selection of more
106 severe cases earlier in the pandemic due to higher community incidence and an overburdened
107 healthcare system. Our results from that first wave included only in-hospital mortality and did
108 not explore how care for conditions other than COVID-19 was impacted by the pandemic.
109 Age is among the strongest risk factors for COVID-19 and the infection fatality ratio after age
110 70 is substantial.^{2,3} Here, we present data on geriatric hospitalizations for COVID-19 and
111 other causes, including 30-day mortality from admission and compare these to the incidence
112 of COVID-19 and 30-day mortality from COVID-19 in the Stockholm region for persons 70+.
113 We aim to describe how COVID-19 peaks affected geriatric patients 70 and older hospitalized
114 both for COVID-19 and for other causes in Stockholm.⁴⁻⁷

115

116 In previous reports, COVID-19 mortality in hospitalized patients in Sweden increased with
117 each pandemic wave and decreased between pandemic peaks.^{8,9} According to the Swedish
118 Board of Health and Welfare, 60-day mortality after admission with COVID-19 decreased
119 from a first-wave peak in March 2020 (25%) to a first nadir in August-September 2020 (10%),
120 then rose again but to lower levels as the second wave progressed to a peak in December 2020
121 (20%), decreasing steadily afterwards.¹⁰ Decreasing mortality during the first pandemic wave
122 was also observed in studies from the US,¹¹ with subsequent increases in mortality during
123 pandemic surges.¹² A Spanish study reported that COVID-19 patients in the first wave were
124 older, with more comorbidities and higher mortality than in the second wave.¹³ However,
125 information is missing on mortality trends later in the pandemic, trends in older population
126 and in geriatric patients with diagnoses other than COVID-19.

127

128 The aim of this study is to describe the changes over time in 30 day-mortality after admission
129 of patients 70 years and older, hospitalized in 9 geriatric clinics in the Stockholm region from
130 March 2020 to July 2021. We describe 30-day mortality both for patients hospitalized for
131 COVID-19 and other causes over the three waves of the pandemic. Weekly hospitalizations
132 for COVID-19 and other causes are presented and compared to the average weekly
133 hospitalizations in the same geriatric clinics in 2019. These results are presented in the context
134 of COVID-19 incidence and 30-day mortality and weekly hospitalizations from any cause in
135 population 70 and over in the Stockholm region.

136

137 METHODS

138 Study population

139 We identified all hospitalizations of patients 70 years and older who were admitted to nine
140 geriatric hospitals in Stockholm, Sweden, from March 6th, 2020, to July 31st, 2021. We
141 excluded hospitalizations with a duration less than 24 hours or with an admission date after
142 August 1st, 2021, to allow one month follow-up for mortality. A total of 5,320 hospitalizations
143 for COVID-19 were included, together with 32,243 hospitalizations with non-COVID-19
144 diagnoses during the same period (**Figure 1**). This corresponded to 4,565 individual COVID-
145 19 patients and 19,308 non-COVID-19 patients.

146

147 **Exposure and Outcome**

148 The study exposure was the hospital admission date (March 1st, 2020, to July 31st, 2021). The
149 study outcome was 30-day mortality from admission. Patients were censored at death, or the
150 end of follow-up (September 10th, 2021) whichever came first.

151

152 **COVID-19 diagnosis and covariates**

153 The diagnosis of COVID-19 followed clinical practice and was based on a positive reverse
154 transcriptase-polymerase chain reaction (RT-PCR) analysis from nasopharyngeal swabs or, in
155 case of a negative RT-PCR, typical clinical picture (including a consultation with a specialist
156 in infectious diseases) and a CT scan with typical COVID-19 findings. All hospitalizations
157 were included, and patients could have multiple hospitalizations. Hospitalizations for
158 diagnoses other than COVID-19 to the same nine geriatric hospitals in Stockholm during the
159 same period comprised the non-COVID group. We collected information on patient
160 demographics, initial vital signs, medications, diagnoses at discharge, and 30-day mortality
161 through the hospital electronic health records. 30-day mortality was defined from the date of
162 admission to geriatrics.

163

164 **COVID-19 incidence and mortality in the population 70 years and older in Stockholm**

165 Information on confirmed cases with COVID-19 and mortality data in the population 70 and
166 over in Stockholm was provided by the Swedish Board of Health and Welfare for research
167 purposes (www.socialstyrelsen.se). Incidence data represents detected COVID-19 infections.
168 Thirty-day mortality corresponds to deaths where COVID-19 was the main cause of death
169 within 30 days of a positive test for persons 70 and over in the Stockholm region. Weekly
170 hospitalizations for any cause in this population were also included as reference.

171

172 **Weekly hospitalizations in 2019**

173 For comparison, the average weekly hospitalizations registered in 2019 in the 9 geriatric
174 clinics was presented. This was calculated by adding the total number of hospitalizations from
175 all clinics (30,969) and dividing by 52 calendar weeks resulting in an average of 596 new
176 hospitalizations per week.

177

178 **Analysis**

179 Summary statistics are displayed as mean \pm standard deviation (SD) or median (interquartile
180 range, IQR) or proportions.

181 30-day mortality rate is graphically presented in relationship to number of new admissions per
182 week and COVID-19 incidence and mortality in the Stockholm region. Via logistic regression
183 models, we assessed the effect of admission date on 30-day mortality, adjusted by age, sex,
184 and medical treatment. Results were reported as odds ratios (OR) and 95% confidence
185 interval (CI). Mortality rates were also compared against non-COVID-19 patients admitted to
186 the same geriatric clinics during the same period.

187 All analyses were performed using R (<https://www.r-project.org>) and Stata version 17.0
188 (StataCorp, College Station, TX).

189

190 **Ethical statement**

191 The Swedish Ethical Review Authority approved the study (Dnr 2020-02146, and 2020-
192 03345).

193

194 **RESULTS**

195 **Characteristics and treatments at admission**

196 Among the hospitalizations due to COVID-19, 87 % (4645 hospitalizations) had positive
197 COVID-19 RT-PCR while 675 (13%) had a negative RT-PCR but fulfilled the clinical and
198 radiological criteria for COVID-19. Patients hospitalized for COVID-19 had a median age of
199 84 (IQR 78-89) years, 53% were women and 6% of the patients had low saturation (<90%) at
200 admission. The median duration of hospitalization was 9 days (IQR 6-13) (**Table 1**). The
201 median age of geriatric hospitalizations for other (non-COVID-19) diagnoses was higher (85
202 IQR 79-90), and their hospital stays were shorter (6 days: IQR 4-9).

203 The total number of hospitalizations in the geriatric hospitals fell sharply at the beginning of
204 the pandemic from a pre-pandemic weekly average of 596 in 2019. After this initial drop in
205 the first wave, geriatric hospitalizations rallied, averaging 507 hospitalizations per week but
206 without a sustained return to pre-pandemic levels. When COVID-19 cases increased, non-
207 COVID-19 cases decreased accordingly (**Figure 2A**; **Supplemental table 1**).

208

209 **Thirty-day mortality**

210 Thirty-day mortality was highest at the beginning of the first wave (29% in March-April 2020
211 for COVID-19; 10% for non-COVID-19), decreased as the first wave subsided (7% July-
212 August for COVID-19; 6% for non-COVID-19), and increased again for COVID cases in the
213 second wave (17% November-December for COVID; 7% for non-COVID). Thirty-day
214 mortality remained more stable in the third wave (11 to 13% March-July 2021 for COVID-19;
215 6% non-COVID-19) (**Table 1**).

216 **Figure 2B** shows the relationship between weekly COVID-19 hospital admissions to the nine
217 geriatric hospitals and 30-day mortality. Mortality is lowest when few COVID-19 patients are
218 hospitalized. **Figure 2C** presents the same relationship but for other geriatric patients. The
219 lowest mortality rates appear in the interpandemic peaks, when COVID hospitalizations were
220 lowest and non-COVID hospitalizations were highest.

221 **Figure 3** shows the relationship between total COVID-19 cases and deaths in the Stockholm
222 region and COVID-19 hospitalizations and deaths in the geriatric hospitals. The number of
223 hospitalizations and the 30-day mortality rates increased with each pandemic peak and
224 decreased between the peaks. The 30-day mortality rate after a positive test in Stockholm and
225 the 30-day mortality rate after admission in the geriatric hospitals followed the pandemic and
226 hospitalization curves. The smaller increase in the third wave probably indicates a vaccination
227 effect.

228 **Table 2** shows 30-day mortality risk from logistic regression, adjusted by age, sex, Charlson
229 Comorbidity Index (CCI) and treatment. Compared with patients admitted to geriatrics for
230 COVID-19 in November-December 2020, the risk of 30-day mortality was higher (OR 1.92,
231 95% CI 1.55-2.37) in March-April 2020, and lower in July August 2020 (OR 0.31, 0.15-0.66).
232 A downward tendency appeared again in January-February 2021 (OR 0.70, 0.54-0.91), March-
233 April 2021 (OR 0.72, 0.55-0.94) and May-June-July (OR 0.75, 0.49-1.13) (**Table 2**).

234

235 **Thirty-day mortality in non-COVID-19 hospitalizations**

236 Compared with hospitalizations in November-December 2020, hospitalizations in March-
237 April 2020 had the highest mortality risk (OR 1.33; 95 CI 1.10-1.61), while hospitalizations
238 from September-October 2020 (OR 0.67; 95% CI 0.55-0.82), March-April 2021 (0.81; 95%
239 CI 0.67-0.99) and May-July 2021 (OR 0.82; 95% CI 0.69-0.98) presented lower risk, after
240 adjusting (**Table 1, Figure 2**).

241

242 **DISCUSSION**

243 Several important observations appear in this study of hospitalized geriatric patients in
244 Stockholm, Sweden. First, hospital admissions fell sharply at the beginning of the pandemic
245 and didn't reach pre-pandemic levels throughout the whole observation period. Longer
246 hospital stays in COVID-19 patients could be one reason for this finding. The length of
247 hospitalization for COVID-19 patients was in line with previous international reports.^{11, 14} A
248 reduction in elective procedures probably also contributed to the fall in admissions. The
249 higher care burden for COVID-19 patients, together with the time required to don and doff
250 protective equipment may have led to greater care burden and lower capacity to accept new
251 cases. Additionally, hip and other osteoporotic fractures might have decreased in the
252 population 70 and older due to the recommendations for this age group to avoid social
253 contact.¹⁵ Hospital admissions further decreased during the summer months: the receding
254 COVID-19 waves probably contributed to this reduction as did the customary reductions in
255 available beds due to staff vacation which occur every summer.

256

257 Care seeking behaviour and the capacity of the healthcare system to detect and manage other
258 diseases was affected during the pandemic: for example, the Swedish Stroke Register reports
259 a decrease in the number of detected strokes in 2020 and 2021 compared to 2019.¹⁶ The
260 Swedish registry for cognitive/dementia disorders reported a 30% reduction in diagnostic
261 work-up.¹⁷ One US study included over 23 million emergency department (ED) visits for
262 elderly Medicare beneficiaries, and compared hospital admission rate and changes in 30-day
263 mortality between identical periods in 2018-19 and 2019-20.¹⁸ The drop in ED visits and
264 increase in admission rate didn't correlate with local COVID-19 incidence. Mortality risk
265 after ED visits also increased. The drop in ED visits, together with increased admission rate
266 and mortality suggest that patients were avoiding seeking care, selecting for a sicker patient
267 population in the ED. Furthermore, the lack of correlation with COVID-19 incidence suggests
268 that patient behaviours (rather than hospital capacity) were responsible.¹⁸ Another US study
269 found a decrease in ED visits for serious cardiovascular conditions early in the pandemic with
270 gradual recovery (until October 2020)¹⁹. The same drop in cardiovascular visits was seen in
271 Europe.^{20, 21} In contrast to the US study we saw a drop in hospitalizations in our cohort but not
272 a complete recovery afterwards. We do not have data on ED visits so we cannot distinguish
273 between patient care-seeking behaviours and triage in the ED. As seen in figure 2A COVID-
274 19 patients displaced other diagnoses from geriatric care. The supply of geriatric
275 hospitalizations in our cohort was inelastic, remained relatively stable during the pandemic
276 and was lower than in 2019.

277

278 Second, 30-day mortality rose and fell with the pandemic waves. However, the peak mortality
279 in geriatric clinics was higher in the first than in the second wave. This effect was more
280 evident for COVID-19 patients but appeared also in non-COVID geriatric patients. Several
281 studies, including our previous study, have noted a decrease in mortality throughout the first

282 wave of the pandemic^{22, 1}. A subsequent increase was observed again during the second wave
283 in Sweden^{9, 23}. One study included more than 30,000 COVID-19 patients (including those
284 admitted to the ICU) hospitalized between March and December 2020 in Sweden and showed
285 that the 60-day case fatality rate for hospitalized cases decreased in the first wave but
286 increased again in the second wave⁹. This study noted that the average age and comorbidities
287 for hospitalized patients increased in the second wave, although they adjusted for these and
288 other factors.

289

290 COVID-19 incidence was more severely underreported in the first wave in Sweden than later
291 in the pandemic.²³ Some patients were treated in their nursing homes and never transferred to
292 hospital, and this could have the effect of lowering the average age and comorbidities in the
293 first wave but, interestingly, this change in average age is not present in our cohort. This may
294 be explained by the fact that most patients admitted to inpatient geriatric hospital care lived in
295 their own homes prior to admission. In this geriatric cohort, the proportion of patients
296 presenting with oxygen saturation under 90% at baseline decreased from 8.9% in March-April
297 2020 to 2% in June, increasing again to 7.7% in December 2020. In our previous article we
298 showed that low oxygen saturation at baseline explained some, but not all, of the temporal
299 trend in mortality observed during the first wave.¹ Triage was probably harsher in the first
300 wave leading to a sicker patient population and higher mortality. The alpha variant arrived in
301 Sweden in December 2020, too late to explain the increase in 30-day mortality. Improvements
302 in treatment may also explain a part of the reduction in mortality.

303

304 In an international context, studies from Africa²⁴, Italy²⁵, and Germany²⁶ showed a significant
305 difference in COVID-mortality between the first wave and the second wave. Our temporal
306 trend closely follows the German report, with high initial case fatal ratio, nadir in summer
307 2020 and subsequent increase in the second wave. In Germany, the first wave was smaller
308 and led to fewer hospitalizations than the second, while the peaks in hospitalizations between
309 the waves were more similar in Sweden. Despite this, the highest mortality in both studies
310 was seen in the initial peak of the first wave²⁶. Another study examined raw case fatality ratio
311 (CFR) in 53 countries or regions and showed decreased mortality in the second wave in 43 of
312 them, including in Sweden.²⁷

313

314 Third, vaccinations probably changed the association between incidence and mortality in the
315 third wave and averted the increase in 30-day mortality that had been apparent with increasing
316 hospitalizations in the previous waves. The COVID-19 vaccination campaign began at the end
317 of December 2020 in nursing homes and its effects on mortality were felt already in March-
318 April 2021, as also seen in our cohort.²⁸

319

320 We cannot completely explain the changes in mortality. First, it should be noted that the 30-
321 day mortality rate for COVID-19 patients reported in our study is based on a large cohort of
322 older people in geriatric clinics in Stockholm, excluding nursing home patients treated in
323 place, mild cases treated at home or cases treated in ICU or infectious disease wards instead
324 of the geriatric clinics. Second, during the first wave of pandemic, the treatment and care of
325 COVID-19 patients underwent great changes
326 (<https://www.internetmedicin.se/behandlingsoversikter/infektion/covid-19/>), and these
327 improvements are likely to be part of the reason for the decline in mortality during the first
328 wave. In the second wave, the national guidelines for COVID-19 patients hospitalized in

329 Sweden didn't undergo major changes. In a previous report, we have shown that the prognosis
330 of COVID-19 for the most frail during the first wave was ominous²⁹. It is possible that the
331 most vulnerable and frail died during the first wave and thus contributing to lower mortality
332 during the second wave.

333

334 We believe that due to the inelasticity of hospitalizations, increasing COVID-19 admissions
335 during pandemic waves led to corresponding decreases in non-COVID admissions. This may
336 have led to more stringent selection of admissions, a sicker patient population and greater
337 overall mortality. Changes in treatment guidelines, particularly use of anticoagulants and
338 corticosteroids led to improvement in the outcome of patients with COVID-19³⁰. However,
339 except for vaccines and the third wave, these changes were implemented relatively early in
340 the pandemic (before or during the summer of 2020) and cannot explain all the later changes
341 in mortality.³⁰

342

343 **Strengths and limitations:**

344 In Sweden, geriatric hospitalizations are indicated on criteria of biological (and not
345 chronological aging). Non-frail and non-comorbid older patients may have been hospitalized
346 in other clinics (eg. infectious diseases) and not included in our cohort. Nine out of eleven
347 existing geriatric clinics in Stockholm participated in the study. Living situation,
348 comorbidities and medications were obtained from electronic health records with imperfect
349 ascertainment. Medications were considered present if they were present or prescribed within
350 24h of hospitalization and would have included both newly prescribed medications and those
351 removed after admission. We did not have information on vaccination, which would have
352 been useful for assessing the decline of mortality in the third wave of the pandemic. Strengths
353 of this study are the large geriatric cohort including nine out of eleven geriatric clinics in
354 Stockholm treating patients with COVID-19. Also novel is the analysis of geriatric
355 hospitalizations for other causes and the long study period including three pandemic waves
356 over a period of 17 months.

357

358 **Conclusion:**

359 Thirty-day mortality was highest at the peak of the first wave, decreased in the inter-wave
360 period and then increased again but to a lower peak in the second wave. The mortality
361 increase of the third wave was probably averted by the vaccination campaign. Non-COVID
362 mortality showed a similar trend but with lower magnitude. During COVID-19 incidence
363 peaks, COVID-19 hospitalizations displaced non-COVID geriatric patients. Despite a massive
364 organizational effort and the individual effort and sacrifice of health care workers, the
365 healthcare system could not compensate for high community spread of COVID-19 during the
366 pandemic peaks. Hospital admissions fell at the beginning of the pandemic and never returned
367 to pre-pandemic levels, probably reflecting the greater complexity of COVID-19 patients
368 compared to ordinary geriatric patients. The sustained fall in hospital admissions is
369 particularly worrisome considering the backlog of cancelled and deferred care caused by the
370 pandemic. COVID-19 disproportionately affects geriatric patients, and the broader pandemic
371 has disrupted geriatric care.

372

373

374 **ACKNOWLEDGEMENTS**

375 Sara Garcia-Ptacek has received funding from the Swedish Stroke Association, the regional
376 agreement on medical training and clinical research between the Stockholm County council
377 and the Karolinska Institutet (ALF) and FORTE (#2017-01646). Hong Xu by StratNeuro (the
378 Strategic Research Area Neuroscience-Karolinska Institutet, Umeå University and KTH) and
379 the Center for Innovative Medicine (CIMED). Maria Eriksdotter by the Swedish medical
380 research council grant (#2016-02317 and #2020-02014) and the regional agreement on
381 medical training and clinical research between the Stockholm County council and the
382 Karolinska Institutet (ALF), Dorota Religa by the Swedish Research Council (#2012-2291
383 and 2020-06101). The authors are grateful to the Swedish Board of Health and Welfare (Frida
384 Broström and Henrik Nordin) for providing epidemiological data on COVID-19 in the
385 population 70 years and older in Stockholm. The authors appreciate covidix.org for their
386 clear presentation of Swedish Covid-19 statistics and their help in finding relevant data for
387 this study.

388

389 **DECLARATION OF INTERESTS**

390 None of the authors declare any conflict of interest pertinent to the present work.

391

392 REFERENCES

- 393 1. Xu H, Garcia-Ptacek S, Annetorp M, et al. Decreased Mortality Over Time During the
394 First Wave in Patients With COVID-19 in Geriatric Care: Data From the Stockholm GeroCovid Study. *J*
395 *Am Med Dir Assoc*. Aug 2021;22(8):1565-1573 e4. doi:10.1016/j.jamda.2021.06.005
- 396 2. Seoane B. A scaling approach to estimate the age-dependent COVID-19 infection
397 fatality ratio from incomplete data. *PLoS One*. 2021;16(2):e0246831.
398 doi:10.1371/journal.pone.0246831
- 399 3. Russell TW, Hellewell J, Jarvis CI, et al. Estimating the infection and case fatality ratio
400 for coronavirus disease (COVID-19) using age-adjusted data from the outbreak on the Diamond
401 Princess cruise ship, February 2020. *Euro Surveill*. Mar 2020;25(12)doi:10.2807/1560-
402 7917.ES.2020.25.12.2000256
- 403 4. Horby P, Lim WS, Emberson JR, et al. Dexamethasone in Hospitalized Patients with
404 Covid-19 - Preliminary Report. *The New England journal of medicine*. Jul 17
405 2020;doi:10.1056/NEJMoa2021436
- 406 5. Beigel JH, Tomashek KM, Dodd LE, et al. Remdesivir for the Treatment of Covid-19 -
407 Final Report. *The New England journal of medicine*. Oct 8 2020;doi:10.1056/NEJMoa2007764
- 408 6. Paolisso P, Bergamaschi L, D'Angelo EC, et al. Preliminary Experience With Low
409 Molecular Weight Heparin Strategy in COVID-19 Patients. *Frontiers in pharmacology*. 2020;11:1124.
410 doi:10.3389/fphar.2020.01124
- 411 7. Wang Y, Zhang D, Du G, et al. Remdesivir in adults with severe COVID-19: a
412 randomised, double-blind, placebo-controlled, multicentre trial. *Lancet (London, England)*. May 16
413 2020;395(10236):1569-1578. doi:10.1016/s0140-6736(20)31022-9
- 414 8. Strålin K, Wahlström E, Walther S, et al. Mortality trends among hospitalised COVID-19
415 patients in Sweden: A nationwide observational cohort study. *Lancet Reg Health Eur*. May
416 2021;4:100054. doi:10.1016/j.lanepe.2021.100054
- 417 9. Strålin K, Wahlström E, Walther S, et al. Second wave mortality among patients
418 hospitalised for COVID-19 in Sweden: a nationwide observational cohort study. *medRxiv*.
419 2021:2021.03.29.21254557. doi:10.1101/2021.03.29.21254557
- 420 10. Welfare SBoHa. *Healthcare and Covid*. 2021. Accessed 2021-09-29.
421 [https://www.socialstyrelsen.se/statistik-och-data/statistik/statistik-om-covid-19/statistik-om-](https://www.socialstyrelsen.se/statistik-och-data/statistik/statistik-om-covid-19/statistik-om-slutenvard-av-patienter-med-covid-19/)
422 [slutenvard-av-patienter-med-covid-19/](https://www.socialstyrelsen.se/statistik-och-data/statistik/statistik-om-covid-19/statistik-om-slutenvard-av-patienter-med-covid-19/)
- 423 11. Nguyen JL, Benigno M, Malhotra D, et al. Hospitalization and mortality trends among
424 patients with confirmed COVID-19 in the United States, April through August 2020. *Journal of Public*
425 *Health Research*. 10/28 2021;doi:10.4081/jphr.2021.2244
- 426 12. Moon RC, Mackey RH, Cao Z, et al. Is COVID-19 Less Deadly Now? -- Trends of In-
427 Hospital Mortality Among Hospitalized COVID-19 Patients in the United States. *Clin Infect Dis*. Sep 17
428 2021;doi:10.1093/cid/ciab830
- 429 13. Aznar-Gimeno R, Pano-Pardo JR, Esteban LM, et al. Changes in severity, mortality, and
430 virus genome among a Spanish cohort of patients hospitalized with SARS-CoV-2. *Sci Rep*. Sep 22
431 2021;11(1):18844. doi:10.1038/s41598-021-98308-x
- 432 14. Vekaria B, Overton C, Wisniowski A, et al. Hospital length of stay for COVID-19 patients:
433 Data-driven methods for forward planning. *BMC Infect Dis*. Jul 22 2021;21(1):700.
434 doi:10.1186/s12879-021-06371-6
- 435 15. Rydberg EM, Möller M, Ekelund J, Wolf O, Wennergren D. Does the Covid-19
436 pandemic affect ankle fracture incidence? Moderate decrease in Sweden. *Acta Orthop*. Aug
437 2021;92(4):381-384. doi:10.1080/17453674.2021.1907517
- 438 16. Register TSS. *Covid-19 report Stroke*. 2021:4-5. Accessed 2021-09-29.
439 [https://www.riksstroke.org/sve/forskning-statistik-och-verksamhetsutveckling/rapporter/ovriga-](https://www.riksstroke.org/sve/forskning-statistik-och-verksamhetsutveckling/rapporter/ovriga-rapporter-2/)
440 [rapporter-2/](https://www.riksstroke.org/sve/forskning-statistik-och-verksamhetsutveckling/rapporter/ovriga-rapporter-2/)
- 441 17. *SveDem Annual report 2021*. . [https://www.ucruise/svedem/om-svedem/arsrapporter.](https://www.ucruise/svedem/om-svedem/arsrapporter.2021)
442 2021.

- 443 18. Smulowitz PB, O'Malley AJ, Khidir H, Zaborski L, McWilliams JM, Landon BE. National
444 Trends In ED Visits, Hospital Admissions, And Mortality For Medicare Patients During The COVID-19
445 Pandemic. *Health Affairs*. 2021/09/01 2021;40(9):1457-1464. doi:10.1377/hlthaff.2021.00561
- 446 19. Pines JM, Zocchi MS, Black BS, et al. The effect of the COVID-19 pandemic on
447 emergency department visits for serious cardiovascular conditions. *Am J Emerg Med*. Sep
448 2021;47:42-51. doi:10.1016/j.ajem.2021.03.004
- 449 20. De Rosa S, Spaccarotella C, Basso C, et al. Reduction of hospitalizations for myocardial
450 infarction in Italy in the COVID-19 era. *Eur Heart J*. Jun 7 2020;41(22):2083-2088.
451 doi:10.1093/eurheartj/ehaa409
- 452 21. Sokolski M, Gajewski P, Zymliński R, et al. Impact of Coronavirus Disease 2019 (COVID-
453 19) Outbreak on Acute Admissions at the Emergency and Cardiology Departments Across Europe. *Am*
454 *J Med*. Apr 2021;134(4):482-489. doi:10.1016/j.amjmed.2020.08.043
- 455 22. Strålin K, Wahlström E, Walther S, et al. Mortality trends among hospitalised COVID-19
456 patients in Sweden: A nationwide observational cohort study. *The Lancet Regional Health – Europe*.
457 2021;4doi:10.1016/j.lanepe.2021.100054
- 458 23. Statistics on hospitalizations of patients with Covid-19 (2021).
- 459 24. Salyer SJ, Maeda J, Sembuche S, et al. The first and second waves of the COVID-19
460 pandemic in Africa: a cross-sectional study. *Lancet (London, England)*. Apr 3 2021;397(10281):1265-
461 1275. doi:10.1016/s0140-6736(21)00632-2
- 462 25. Dorrucci M, Minelli G, Boros S, et al. Excess Mortality in Italy During the COVID-19
463 Pandemic: Assessing the Differences Between the First and the Second Wave, Year 2020. *Frontiers in*
464 *public health*. 2021;9:669209. doi:10.3389/fpubh.2021.669209
- 465 26. Gessler N, Gunawardene MA, Wohlmuth P, et al. Clinical outcome, risk assessment,
466 and seasonal variation in hospitalized COVID-19 patients-Results from the CORONA Germany study.
467 *PloS one*. 2021;16(6):e0252867. doi:10.1371/journal.pone.0252867
- 468 27. Fan G, Yang Z, Lin Q, Zhao S, Yang L, He D. Decreased Case Fatality Rate of COVID-19 in
469 the Second Wave: A study in 53 countries or regions. *Transboundary and emerging diseases*. Mar
470 2021;68(2):213-215. doi:10.1111/tbed.13819
- 471 28. Sweden PHAo. *Vaccination coverage and reported cases (Vaccinationstäckning och*
472 *rapporterade sjukdomsfall)*. 2021. 2021-05-20. Accessed 2021-11-08.
473 [https://www.folkhalsomyndigheten.se/folkhalsorapportering-statistik/statistikdatabaser-och-](https://www.folkhalsomyndigheten.se/folkhalsorapportering-statistik/statistikdatabaser-och-visualisering/vaccinationsstatistik/statistik-for-vaccination-mot-covid-19/uppfoljning-av-vaccination/vaccinationstackning-och-rapporterade-sjukdomsfall/)
474 [visualisering/vaccinationsstatistik/statistik-for-vaccination-mot-covid-19/uppfoljning-av-](https://www.folkhalsomyndigheten.se/folkhalsorapportering-statistik/statistikdatabaser-och-visualisering/vaccinationsstatistik/statistik-for-vaccination-mot-covid-19/uppfoljning-av-vaccination/vaccinationstackning-och-rapporterade-sjukdomsfall/)
475 [vaccination/vaccinationstackning-och-rapporterade-sjukdomsfall/](https://www.folkhalsomyndigheten.se/folkhalsorapportering-statistik/statistikdatabaser-och-visualisering/vaccinationsstatistik/statistik-for-vaccination-mot-covid-19/uppfoljning-av-vaccination/vaccinationstackning-och-rapporterade-sjukdomsfall/)
- 476 29. Hägg S, Jylhävä J, Wang Y, et al. Age, Frailty, and Comorbidity as Prognostic Factors for
477 Short-Term Outcomes in Patients With Coronavirus Disease 2019 in Geriatric Care. *J Am Med Dir*
478 *Assoc*. Nov 2020;21(11):1555-1559.e2. doi:10.1016/j.jamda.2020.08.014
- 479 30. "Swedish Society of Infectious disease specialists SHsaSfCM. *National care program for*
480 *suspected or confirmed COVID-19 (Nationellt vårdprogram för misstänkt och bekräftad covid-19)*.
481 2021:28. Accessed 2021-11-23. <https://infektion.net/nationellt-varldprogram-covid19/#>

483 **Table 1. Hospitalizations for COVID-19 and other causes in patients 70 and over in**
 484 **geriatric clinics**

	2020-2021	2020	2020	2020	2020	2020	2021	2021	2021
	Overall	Mar-Apr	May-June	July-Aug	Sep-Oct	Nov-Dec	Jan-Feb	Mar-Apr	May-June-July
COVID-19									
N	5320	990	813	117	118	1329	838	870	245
Age, year	84.0 (78.0, 89.0)	84.5 (79.0, 90.0)	85.0 (79.0, 91.0)	86.0 (81.0, 90.0)	85.5 (81.0, 91.0)	84.0 (79.0, 89.0)	83.0 (78.0, 89.0)	81.0 (76.0, 86.0)	81.0 (75.0, 88.0)
Women	2822 (53.0%)	535 (54.0%)	442 (54.4%)	63 (53.8%)	70 (59.3%)	723 (54.4%)	429 (51.2%)	436 (50.1%)	124 (50.6%)
CCI	2.0 (0.0, 3.0)	2.0 (0.0, 3.0)	2.0 (0.0, 3.0)	1.0 (0.0, 3.0)	1.0 (0.0, 3.0)	2.0 (0.0, 3.0)	2.0 (0.0, 3.0)	2.0 (0.0, 3.0)	2.0 (0.0, 3.0)
Hypertension	1777 (33.4%)	380 (38.4%)	310 (38.1%)	25 (21.4%)	43 (36.4%)	383 (28.8%)	268 (32.0%)	306 (35.2%)	62 (25.3%)
Diabetes	2014 (37.9%)	344 (34.7%)	287 (35.3%)	33 (28.2%)	32 (27.1%)	510 (38.4%)	331 (39.5%)	367 (42.2%)	110 (44.9%)
Chronic heart failure	761 (14.3%)	179 (18.1%)	152 (18.7%)	11 (9.4%)	21 (17.8%)	176 (13.2%)	115 (13.7%)	85 (9.8%)	22 (9.0%)
Myocardial Infarction	233 (4.4%)	43 (4.3%)	31 (3.8%)	1 (0.9%)	4 (3.4%)	57 (4.3%)	39 (4.7%)	44 (5.1%)	14 (5.7%)
Chronical pulmonary disease	709 (13.3%)	148 (14.9%)	108 (13.3%)	9 (7.7%)	20 (16.9%)	185 (13.9%)	114 (13.6%)	106 (12.2%)	19 (7.8%)
Asthma	185 (3.5%)	36 (3.6%)	24 (3.0%)	3 (2.6%)	8 (6.8%)	41 (3.1%)	28 (3.3%)	39 (4.5%)	6 (2.4%)
Cancer	331 (6.2%)	74 (7.5%)	49 (6.0%)	16 (13.7%)	10 (8.5%)	84 (6.3%)	41 (4.9%)	42 (4.8%)	15 (6.1%)
Stroke	307 (5.8%)	66 (6.7%)	58 (7.1%)	4 (3.4%)	9 (7.6%)	79 (5.9%)	38 (4.5%)	39 (4.5%)	14 (5.7%)
Atrial fibrillation	1061 (19.9%)	217 (21.9%)	195 (24.0%)	25 (21.4%)	26 (22.0%)	273 (20.5%)	151 (18.0%)	139 (16.0%)	35 (14.3%)
Initial S02<90%	342 (6.4%)	89 (9.0%)	39 (4.8%)	3 (2.6%)	7 (5.9%)	99 (7.4%)	50 (6.0%)	42 (4.8%)	13 (5.3%)
ACEI	1229 (23.1%)	246 (24.8%)	198 (24.4%)	21 (17.9%)	24 (20.3%)	276 (20.8%)	204 (24.3%)	190 (21.8%)	70 (28.6%)
ARB	1462 (27.5%)	251 (25.4%)	209 (25.7%)	32 (27.4%)	40 (33.9%)	378 (28.4%)	243 (29.0%)	248 (28.5%)	61 (24.9%)
β-blocker	2745 (51.6%)	531 (53.6%)	419 (51.5%)	65 (55.6%)	54 (45.8%)	681 (51.2%)	436 (52.0%)	430 (49.4%)	129 (52.7%)
CCB	1621 (30.5%)	295 (29.8%)	237 (29.2%)	34 (29.1%)	24 (20.3%)	412 (31.0%)	255 (30.4%)	286 (32.9%)	78 (31.8%)
Diuretics	2819 (53.0%)	563 (56.9%)	449 (55.2%)	66 (56.4%)	74 (62.7%)	672 (50.6%)	453 (54.1%)	410 (47.1%)	132 (53.9%)
Statins	2148 (40.4%)	380 (38.4%)	309 (38.0%)	40 (34.2%)	48 (40.7%)	548 (41.2%)	354 (42.2%)	380 (43.7%)	89 (36.3%)
Warfarin	388 (7.3%)	85 (8.6%)	61 (7.5%)	15 (12.8%)	7 (5.9%)	93 (7.0%)	62 (7.4%)	48 (5.5%)	17 (6.9%)
LMWH	2732 (51.4%)	410 (41.4%)	427 (52.5%)	39 (33.3%)	59 (50.0%)	772 (58.1%)	417 (49.8%)	509 (58.5%)	99 (40.4%)

It is made available under a [CC-BY-NC-ND 4.0 International license](https://creativecommons.org/licenses/by-nc-nd/4.0/) .

NOAC	1745 (32.8%)	262 (26.5%)	285 (35.1%)	41 (35.0%)	34 (28.8%)	429 (32.3%)	315 (37.6%)	287 (33.0%)	92 (37.6%)
Glucocorticoids	1492 (28.0%)	151 (15.3%)	148 (18.2%)	23 (19.7%)	31 (26.3%)	465 (35.0%)	250 (29.8%)	338 (38.9%)	86 (35.1%)
Antibiotics	1798 (33.8%)	369 (37.3%)	252 (31.0%)	41 (35.0%)	41 (34.7%)	426 (32.1%)	280 (33.4%)	288 (33.1%)	101 (41.2%)
Days of hospitalization	9.0 (6.0, 13.0)	9.0 (6.0, 14.0)	9.0 (6.0, 14.0)	9.0 (6.0, 13.0)	11.0 (8.0, 19.0)	9.0 (6.0, 14.0)	8.0 (6.0, 12.0)	7.0 (5.0, 11.0)	8.0 (5.0, 10.0)
30-day mortality	910 (17.1%)	282 (28.5%)	134 (16.5%)	8 (6.8%)	21 (17.8%)	228 (17.2%)	106 (12.6%)	99 (11.4%)	32 (13.1%)
Non-COVID									
N	32243	3177	3198	4191	4736	2770	3217	4028	6926
Age, year	85.0 (79.0, 90.0)	86.0 (80.0, 91.0)	86.0 (80.0, 91.0)	85.0 (79.0, 90.0)	85.0 (79.0, 90.0)	85.0 (80.0, 90.0)	85.0 (79.0, 90.0)	85.0 (79.0, 90.0)	85.0 (79.0, 90.0)
Women	19336 (60.0%)	1895 (59.6%)	1900 (59.4%)	2574 (61.4%)	2822 (59.6%)	1635 (59.0%)	1907 (59.3%)	2429 (60.3%)	4174 (60.3%)
CCI	1.0 (0.0, 3.0)	2.0 (0.0, 3.0)	1.0 (0.0, 3.0)	1.0 (0.0, 3.0)	1.0 (0.0, 3.0)	1.0 (0.0, 3.0)	1.0 (0.0, 3.0)	1.0 (0.0, 3.0)	1.0 (0.0, 3.0)
Hypertension	9804 (30.4%)	1150 (36.2%)	1050 (32.8%)	1305 (31.1%)	1388 (29.3%)	817 (29.5%)	930 (28.9%)	1138 (28.3%)	2026 (29.3%)
Diabetes	9080 (28.2%)	908 (28.6%)	844 (26.4%)	1174 (28.0%)	1360 (28.7%)	769 (27.8%)	887 (27.6%)	1147 (28.5%)	1991 (28.7%)
Chronic heart failure	5001 (15.5%)	668 (21.0%)	541 (16.9%)	627 (15.0%)	680 (14.4%)	430 (15.5%)	480 (14.9%)	622 (15.4%)	953 (13.8%)
Myocardial infarction	1206 (3.7%)	160 (5.0%)	123 (3.8%)	163 (3.9%)	162 (3.4%)	102 (3.7%)	103 (3.2%)	140 (3.5%)	253 (3.7%)
Chronical pulmonary disease	3189 (9.9%)	447 (14.1%)	379 (11.9%)	417 (9.9%)	446 (9.4%)	225 (8.1%)	313 (9.7%)	345 (8.6%)	617 (8.9%)
Asthma	538 (1.7%)	76 (2.4%)	60 (1.9%)	56 (1.3%)	74 (1.6%)	46 (1.7%)	48 (1.5%)	70 (1.7%)	108 (1.6%)
Cancer	2173 (6.7%)	266 (8.4%)	246 (7.7%)	275 (6.6%)	289 (6.1%)	186 (6.7%)	219 (6.8%)	266 (6.6%)	426 (6.2%)
Stroke	2254 (7.0%)	257 (8.1%)	289 (9.0%)	316 (7.5%)	327 (6.9%)	188 (6.8%)	224 (7.0%)	282 (7.0%)	371 (5.4%)
Atrial fibrillation	6578 (20.4%)	896 (28.2%)	765 (23.9%)	851 (20.3%)	942 (19.9%)	557 (20.1%)	638 (19.8%)	714 (17.7%)	1215 (17.5%)
Initial S02<90%	991 (3.1%)	135 (4.2%)	100 (3.1%)	116 (2.8%)	153 (3.2%)	90 (3.2%)	87 (2.7%)	134 (3.3%)	176 (2.5%)
ACEI	7445 (23.1%)	745 (23.4%)	772 (24.1%)	924 (22.0%)	1049 (22.1%)	673 (24.3%)	768 (23.9%)	940 (23.3%)	1574 (22.7%)
ARB	8602 (26.7%)	803 (25.3%)	836 (26.1%)	1120 (26.7%)	1274 (26.9%)	737 (26.6%)	805 (25.0%)	1084 (26.9%)	1943 (28.1%)
β-blocker	17298 (53.6%)	1744 (54.9%)	1720 (53.8%)	2231 (53.2%)	2515 (53.1%)	1445 (52.2%)	1691 (52.6%)	2202 (54.7%)	3750 (54.1%)
CCB	9828 (30.5%)	947 (29.8%)	955 (29.9%)	1240 (29.6%)	1404 (29.6%)	847 (30.6%)	1018 (31.6%)	1245 (30.9%)	2172 (31.4%)
Diuretics	17667 (54.8%)	1740 (54.8%)	1746 (54.6%)	2229 (53.2%)	2562 (54.1%)	1475 (53.2%)	1745 (54.2%)	2275 (56.5%)	3895 (56.2%)
Statins	12580 (39.0%)	1181 (37.2%)	1272 (39.8%)	1541 (36.8%)	1810 (38.2%)	1077 (38.9%)	1328 (41.3%)	1569 (39.0%)	2802 (40.5%)

It is made available under a [CC-BY-NC-ND 4.0 International license](https://creativecommons.org/licenses/by-nc-nd/4.0/) .

Warfarin	2440 (7.6%)	282 (8.9%)	252 (7.9%)	302 (7.2%)	361 (7.6%)	188 (6.8%)	283 (8.8%)	312 (7.7%)	460 (6.6%)
LMWH	5960 (18.5%)	622 (19.6%)	598 (18.7%)	786 (18.8%)	798 (16.8%)	584 (21.1%)	643 (20.0%)	783 (19.4%)	1146 (16.5%)
NOAC	9975 (30.9%)	942 (29.7%)	1012 (31.6%)	1245 (29.7%)	1463 (30.9%)	846 (30.5%)	959 (29.8%)	1245 (30.9%)	2263 (32.7%)
Glucocorticoids	5426 (16.8%)	585 (18.4%)	515 (16.1%)	675 (16.1%)	802 (16.9%)	439 (15.8%)	521 (16.2%)	669 (16.6%)	1220 (17.6%)
Antibiotics	11154 (34.6%)	1071 (33.7%)	1000 (31.3%)	1360 (32.5%)	1547 (32.7%)	986 (35.6%)	1111 (34.5%)	1469 (36.5%)	2610 (37.7%)
Days of hospitalization	6.0 (4.0, 9.0)	6.0 (4.0, 8.0)	7.0 (4.0, 9.0)	7.0 (4.0, 9.0)	6.0 (4.0, 9.0)	7.0 (5.0, 9.0)	7.0 (5.0, 9.0)	7.0 (4.0, 9.0)	6.0 (4.0, 8.0)
30-day mortality	2022 (6.3%)	309 (9.7%)	199 (6.2%)	263 (6.3%)	225 (4.8%)	193 (7.0%)	209 (6.5%)	231 (5.7%)	393 (5.7%)

485 Abbreviations: S02<90% peripheral oxygen saturation under 90%; ACEI, angiotensin-converting enzyme inhibitors; ARB, angiotensin
 486 receptor blockers; CCB, calcium channel blockers; LMWH, low-molecular-weight heparin; NOAC, Non-vitamin-K antagonist oral
 487 anticoagulant. Days of hospitalization: median number of days hospitalized (interquartile range). 30-day mortality is calculated from
 488 the date of hospitalization.

489

490

491 **Table 2 Odds ratios for 30-day mortality in geriatric patients with COVID-19 and other**
 492 **diagnoses throughout the pandemic.**

	COVID-19		Non-COVID	
	OR	95%CI	OR	95%CI
Mar-Apr 2020	1.92***	1.55,2.37	1.33**	1.10,1.61
May-June 2020	0.91	0.72,1.17	0.85	0.69,1.05
July-Aug 2020	0.31**	0.15,0.66	0.90	0.74,1.09
Sep-Oct 2020	0.99	0.59,1.64	0.67***	0.55,0.82
Nov-Dec 2020	ref		ref	
Jan-Feb 2021	0.70**	0.54,0.91	0.93	0.76,1.14
Mar-Apr 2021	0.72*	0.55,0.94	0.81*	0.67,0.99
May-June-July 2021	0.75	0.49,1.13	0.82*	0.69,0.98
Age				
70-79	ref		ref	
80-89	2.05***	1.68,2.51	1.62***	1.42,1.85
90+	3.06***	2.45,3.82	2.42***	2.11,2.77
Women	0.63***	0.54,0.74	0.68***	0.62,0.75
CCI	1.16***	1.12,1.20	1.18***	1.16,1.21
ACEI	0.94	0.78,1.14	0.84**	0.75,0.94
ARB	0.84	0.70,1.01	0.72***	0.64,0.80
β-blocker	1.20*	1.02,1.41	1.25***	1.13,1.39
CCB	0.80*	0.68,0.95	0.72***	0.65,0.80
Diuretics	1.32***	1.12,1.55	1.49***	1.34,1.65
Statins	0.70***	0.59,0.82	0.74***	0.66,0.82
Warfarin	1.15	0.87,1.52	1.06	0.91,1.25
LMWH	1.06	0.88,1.26	1.23***	1.10,1.38
NOAC	0.93	0.77,1.13	0.98	0.88,1.08
Glucocorticoids	1.22*	1.03,1.45	1.18**	1.05,1.33
Antibiotic	1.51***	1.29,1.75	1.27***	1.16,1.40

493

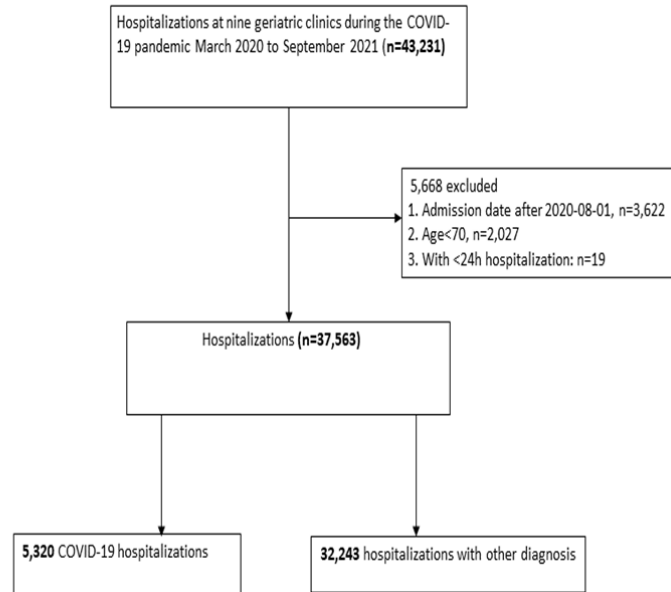
494 Abbreviations: ACEI, angiotensin-converting enzyme inhibitors; ARB, angiotensin receptor blockers; CCB, calcium channel blockers;
 495 LMWH, low-molecular-weight heparin; NOAC, Non-vitamin-K antagonist oral anticoagulant.

496 **Figure 1 Case selection flow chart**

497

498

499



500 **Figure 2 Hospitalizations and mortality throughout the COVID-19 pandemic for**
501 **persons aged 70 and above**

502 **A) Number of weekly hospitalizations of patients 70 and above in nine geriatric clinics in Stockholm from**
503 **March 2020 to July 2021.**

504

505

506

507

508

509

510

511

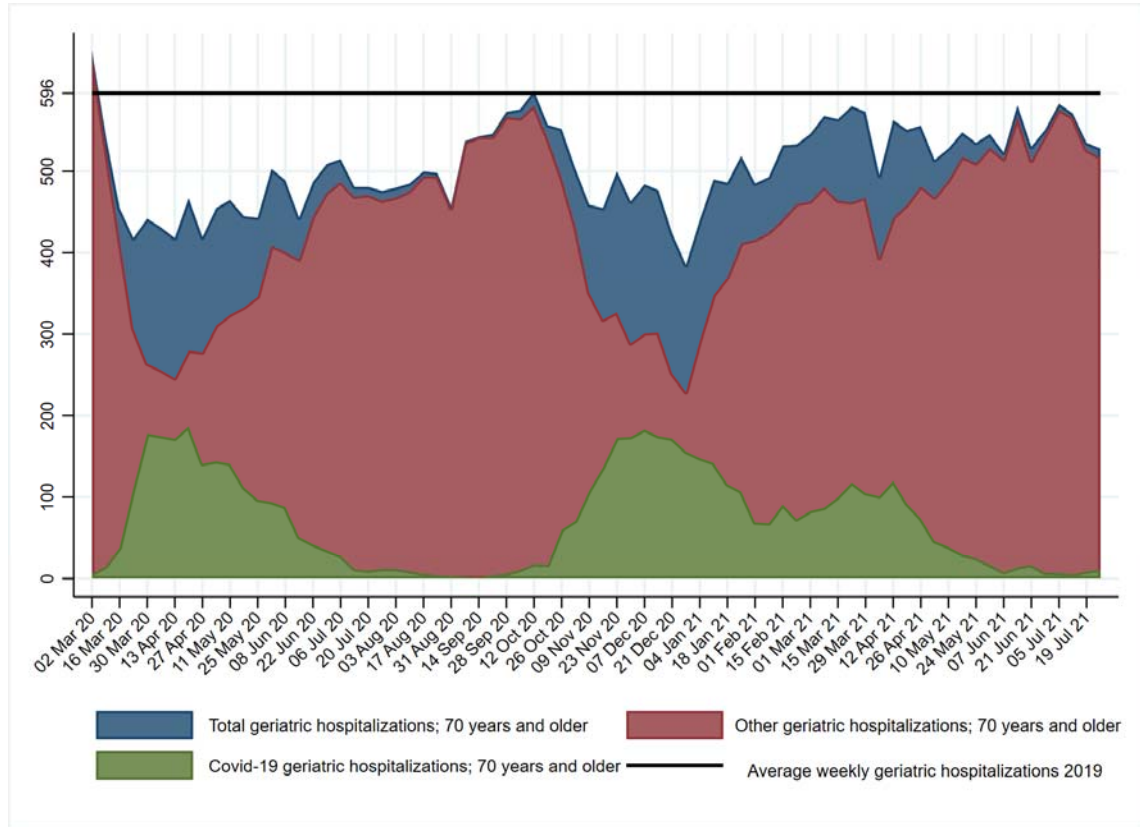
512

513

514

515

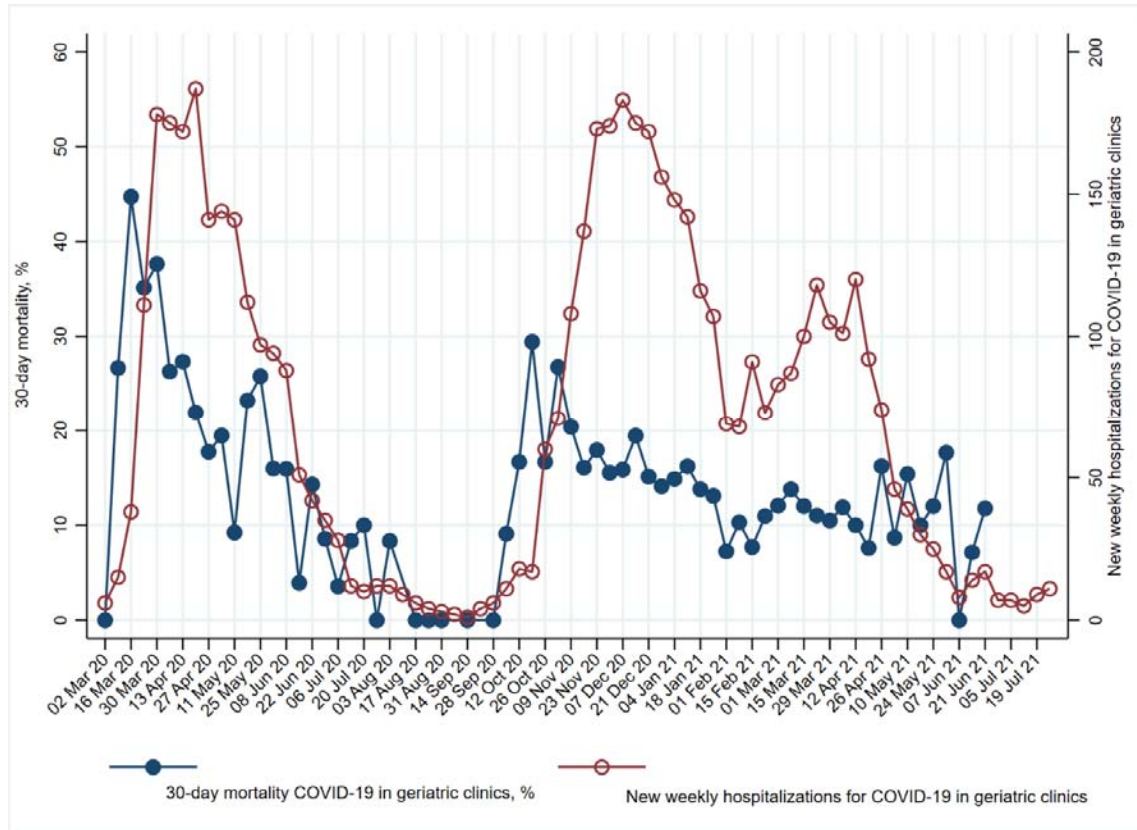
516



517 **B) 30-day COVID-19 mortality in relationship to weekly hospitalizations in geriatric clinics in patients 70**
518 **and above**

519

520



521 **C) 30-day mortality and hospitalizations for non-COVID causes in geriatric clinics for patients 70 and**
522 **over**

523

524

525

526

527

528

529

530

531

532

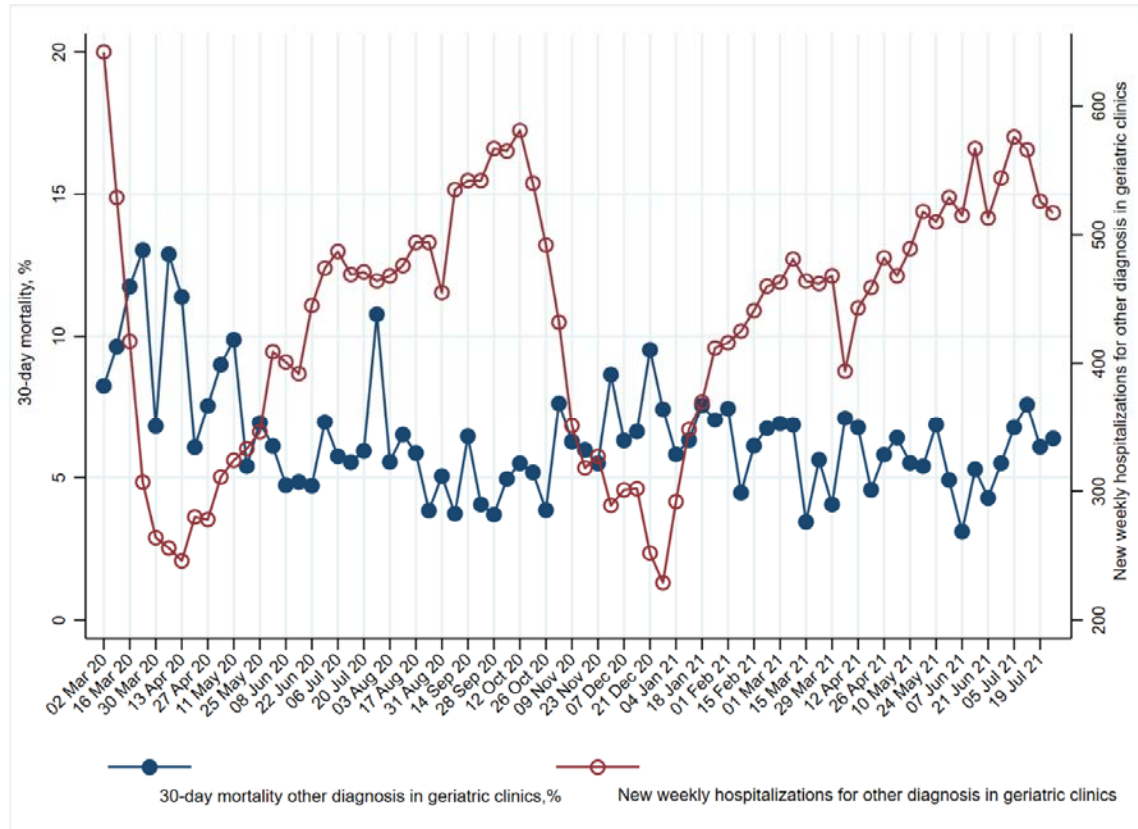
533

534

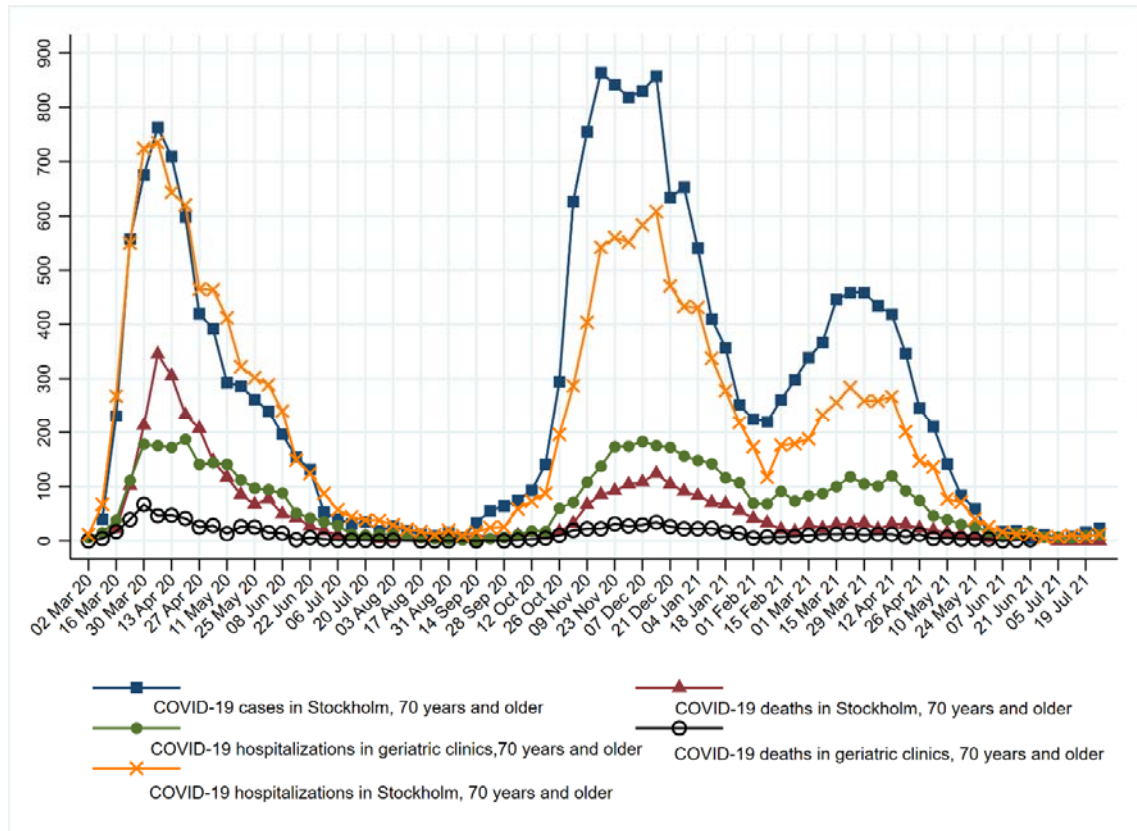
535

536

537



538 **Figure 3. Relationship between confirmed cases of COVID-19, hospitalizations, and**
539 **deaths in Stockholm**



540
541
542
543
544
545
546
547
548
549
550
551
552
553
554
555
556
557
558

559
560

eTable 1 COVID-19 cases, mortality and hospitalizations in Stockholm and in geriatric clinics for population 70 and above.

Week	COVID-19 positive cases in Stockholm	30-day COVID-19 mortality Stockholm	COVID-19 hospitalizations in Stockholm	Total hospitalizations in Stockholm	COVID-19 geriatric hospitalizations	30-day mortality after geriatric hospitalization for COVID-19	Other diagnoses, geriatric hospitalizations	30-day mortality after geriatric hospitalization, non-COVID-19	Total geriatric hospitalizations
March 1, 2020							28	3	28
March 2, 2020			11	2 718	6	0	642	53	648
March 9, 2020	40	X	67	2 515	15	4	529	51	544
March 16, 2020	231	22	268	2 364	38	17	417	49	455
March 23, 2020	557	102	550	2 237	111	39	307	40	418
March 30, 2020	675	213	724	2 130	178	67	264	18	442
April 6, 2020	763	345	735	2 120	175	46	256	33	431
April 13, 2020	709	305	643	2 116	172	47	246	28	418
April 20, 2020	598	233	620	2 260	187	41	280	17	467
April 27, 2020	420	207	465	2 030	141	25	278	21	419
May 4, 2020	392	147	464	2 245	144	28	311	28	455
May 11, 2020	293	117	412	2 120	141	13	324	32	465
May 18, 2020	286	85	322	1 999	112	26	333	18	445
May 25, 2020	262	67	302	2 186	97	25	346	24	443
June 1, 2020	240	77	289	2 277	94	15	409	25	503
June 8, 2020	196	49	240	2 320	88	14	401	19	489
June 15, 2020	154	42	149	2 081	51	2	392	19	443
June 22, 2020	131	27	124	2 235	42	6	445	21	487
June 29, 2020	53	18	87	2 187	35	3	474	33	509
July 6, 2020	40	11	57	2 125	28	1	487	28	515

July 13, 2020	31	7	44	2 018	12	1	469	26	481
July 20, 2020	35	7	38	2 010	10	1	471	28	481
July 27, 2020	18	4	37	2 078	12	0	464	50	476
August 3, 2020	27	5	29	2 136	12	1	468	26	480
August 10, 2020	19	X	21	2 145	9	x	476	31	485
August 17, 2020	12	5	17	2 336	6	0	494	29	500
August 24, 2020	9	X	11	2 453	4	0	494	19	498
August 31, 2020	15	X	19	2 420	3	0	455	23	458
September 7, 2020	6	X	10	2 552	2	x	535	20	537
September 14, 2020	33	X	16	2 567	1	0	542	35	543
September 21, 2020	55	X	24	2 552	4	x	542	22	546
September 28, 2020	64	X	25	2 673	6	0	567	21	573
October 5, 2020	74	10	59	2 726	11	1	565	28	576
October 12, 2020	93	X	73	2 655	18	3	581	32	599
October 19, 2020	141	10	87	2 592	17	5	540	28	557
October 26, 2020	295	17	196	2 683	60	10	492	19	552
November 2, 2020	626	32	287	2 545	71	19	432	33	503
November 9, 2020	755	66	404	2 433	108	22	351	22	459
November 16, 2020	864	85	542	2 565	137	22	318	19	455

November 23, 2020	842	92	560	2 579	173	31	327	18	500
November 30, 2020	818	104	552	2 596	174	27	289	25	463
December 7, 2020	830	108	583	2 680	183	29	301	19	484
December 14, 2020	857	124	608	2 590	175	34	302	20	477
December 21, 2020	634	104	471	2 247	172	26	252	24	424
December 28, 2020	653	91	433	2 308	156	22	229	17	385
January 4, 2021	540	83	431	2 361	148	22	292	17	440
January 11, 2021	410	70	338	2 501	142	23	348	22	490
January 18, 2021	357	68	278	2 512	116	16	370	28	486
January 25, 2021	252	56	218	2 475	107	14	412	29	519
February 1, 2021	225	41	173	2 403	69	5	416	31	485
February 8, 2021	220	33	117	2 363	68	7	425	19	493
February 15, 2021	261	21	176	2 513	91	7	441	27	532
February 22, 2021	298	17	179	2 504	73	8	460	31	533
March 1, 2021	339	30	188	2 446	83	10	463	32	546
March 8, 2021	367	23	233	2 576	87	12	481	33	568
March 15, 2021	446	30	256	2 510	100	12	464	16	564

March 22, 2021	459	30	284	2 664	118	13	462	26	580
March 29, 2021	459	33	259	2 337	105	11	468	19	573
April 5, 2021	434	21	259	2 357	101	12	394	28	495
April 12, 2021	419	31	267	2 435	120	12	443	30	563
April 19, 2021	347	30	201	2 376	92	7	459	21	551
April 26, 2021	246	23	147	2 463	74	12	482	28	556
May 3, 2021	211	19	136	2 529	46	4	468	30	514
May 10, 2021	142	15	77	2 318	39	6	489	27	528
May 17, 2021	84	13	71	2 582	30	3	518	28	548
May 24, 2021	59	8	40	2 469	25	3	510	35	535
May 31, 2021	12	5	26	2 537	17	3	529	26	546
June 7, 2021	17	X	16	2 462	8	0	515	16	523
June 14, 2021	19	X	12	2 553	14	1	567	30	581
June 21, 2021	5	X	12	2 289	17	2	513	22	530
June 28, 2021	11	X	6	2 362	7	x	544	30	551
July 5, 2021	6	0	7	2 271	7	x	576	39	583
July 12, 2021	8	0	10	2 107	5	x	566	43	571
July 19, 2021	16	0	7	2 105	9	x	526	32	535
July 26, 2021	23	0	12	2 134	11	x	517	33	528

561
562
563
564
565
566