

1 **Title:** The changing epidemiology of human monkeypox – a potential threat? A systematic
2 review

3 **Short title:** Human monkeypox – a potential threat?

4 **Authors**

5 Eveline M. Bunge¹, Bernard Hoet², Liddy Chen³, Florian Lienert², Heinz Weidenthaler⁴, Lorraine
6 R. Baer⁵, Robert Steffen⁶

7 **Affiliations**

8 ¹Pallas Health Research and Consultancy, Rotterdam, The Netherlands; ²Bavarian Nordic AG,
9 Zug, Switzerland; ³Bavarian Nordic, Inc., Morrisville, NC, USA; ⁴Bavarian Nordic GmbH,
10 Martinsried, Germany; ⁵Baer PharMed Consulting, Ltd., Skokie, IL, USA; ⁶Epidemiology,
11 Biostatistics and Prevention Institute, WHO Collaborating Center on Travelers' Health,
12 University of Zurich — Zurich, Switzerland, and Department of Epidemiology, Human Genetics
13 and Environmental Sciences, University of Texas School of Public Health — Houston, TX, USA
14

15 **Corresponding Author**

16 Bernard Hoet, MD FFPM
17 beho@bavarian-nordic.com
18 Vice President, Medical Affairs
19 Bavarian Nordic AG
20 Zug, Switzerland

5Final_Rev_8Nov2021

21 **Abstract**

22 Monkeypox, a zoonotic disease caused by an orthopoxvirus, results in a smallpox-like disease in
23 humans. Since monkeypox in humans was initially diagnosed in 1970 in the Democratic
24 Republic of the Congo (DRC), it has spread to other regions of Africa (primarily West and
25 Central), and cases outside Africa have emerged in recent years. We conducted a systematic
26 review of peer-reviewed and grey literature on how monkeypox epidemiology has evolved, with
27 particular emphasis on the number of confirmed, probable, and/or possible cases, age at
28 presentation, mortality, and geographical spread. The review is registered with PROSPERO
29 (CRD42020208269). We identified 48 peer-reviewed articles and 18 grey literature sources for
30 data extraction. The number of human monkeypox cases has been on the rise since the 1970s,
31 with the most dramatic increases occurring in the DRC. The median age at presentation has
32 increased from 4 (1970s) to 21 years (2010–2019). There was an overall case fatality rate of
33 8.7%, with a significant difference between clades — Central African 10.6% (95% CI: 8.4% –
34 13.3%) vs. West African 3.6% (95% CI: 1.7% – 6.8%). Since 2003, import- and travel-related
35 spread outside of Africa has occasionally resulted in outbreaks. Interactions/activities with
36 infected animals or individuals are risk behaviors associated with acquiring monkeypox. Our
37 review shows an escalation of monkeypox cases, especially in the highly endemic DRC, a spread
38 to other countries, and a growing median age from young children to young adults. These
39 findings may be related to the cessation of smallpox vaccination, which provided some cross-
40 protection against monkeypox, leading to increased human-to-human transmission. The
41 appearance of outbreaks beyond Africa highlights the global relevance of the disease. Increased
42 surveillance and detection of monkeypox cases are essential tools for understanding the
43 continuously changing epidemiology of this resurging disease.

5Final_Rev_8Nov2021

44 **Author Summary**

45 Monkeypox, a zoonotic disease caused by an orthopoxvirus, results in a smallpox-like disease in
46 humans. We conducted a systematic review to assess how monkeypox epidemiology has evolved
47 since it was first diagnosed in 1970 in the Democratic Republic of the Congo. In total, human
48 monkeypox has now appeared in 10 African countries and 4 countries elsewhere. Examples
49 include Nigeria, where the disease re-emerged in the last decade after a 40-year hiatus, and the
50 United States, where an outbreak occurred in 2003. The number of cases has increased at a
51 minimum of 10-fold and median age at presentation has evolved from young children (4 years
52 old) in the 1970s to young adults (21 years old) in 2010-2019. This may be related to the
53 cessation of smallpox vaccinations, which provided some cross-protection against monkeypox.
54 The case fatality rate for the Central African clade was 10.6% versus 3.6% for the West African
55 clade. Overall, monkeypox is gradually evolving to become of global relevance. Surveillance
56 and detection programs are essential tools for understanding the continuously changing
57 epidemiology of this resurging disease.

58

5Final_Rev_8Nov2021

59 **Introduction**

60 Monkeypox, currently a rare zoonotic disease, is caused by the monkeypox virus, which belongs
61 to the Poxviridae family, Chordopoxvirinae subfamily, and Orthopoxvirus genus [1]. The variola
62 virus (smallpox virus) is closely related [1], and monkeypox disease results in a smallpox-like
63 disease. Historical data have indicated that smallpox vaccination with vaccinia virus (another
64 orthopoxvirus) was approximately 85% protective against monkeypox [2]. However, following
65 the eradication of smallpox in 1980, routine vaccination against smallpox was no longer
66 indicated [3], and it has now been four decades since any orthopoxvirus vaccination program.

67
68 The name monkeypox originates from the initial discovery of the virus in monkeys in a Danish
69 laboratory in 1958 [4]. The first case in humans was diagnosed in 1970 in a 9-month-old baby
70 boy in Zaire (now the Democratic Republic of the Congo, DRC) [5]. Since that time,
71 monkeypox has become endemic in the DRC, and has spread to other African countries, mainly
72 in Central and West Africa. Outside of Africa, the first reported monkeypox cases were in 2003
73 [6] and, at time of this systematic review, the most recent cases were in 2019 [7, 8].

74
75 A previous systematic review, which evaluated the literature through summer 2018, described
76 the epidemiology of monkeypox outbreaks [9]. In view of the recent increase in reports from
77 Nigeria and elsewhere, we initiated a new systematic literature review with a focus on the
78 changes in the evolution of the epidemiology of human monkeypox since the first cases in the
79 1970s through the present day.

80

5Final_Rev_8Nov2021

81 **Methods**

82 This systematic review was performed in accordance with international standards for conducting
83 and reporting systematic reviews, including guidelines from the Cochrane Collaboration [10] and
84 the Preferred Reporting Items for Systematic Reviews and Meta-Analyses (PRISMA) [11]. The
85 review is registered with PROSPERO (CRD42020208269).

86
87 Searches were performed in MEDLINE (accessed using PubMed), Embase, African Journals
88 Online (AJOL) and the Internet Library sub-Saharan Africa (ilissAfrica), with no language
89 restrictions. All published literature reported through September 7, 2020, the date of last search,
90 was considered for eligibility. In PubMed, searches included Medical Subject Headings (MeSH)
91 and limits to title and abstract (tiab). The search string used in PubMed was Monkeypox[MeSH]
92 OR "Monkeypox virus"[MeSH] OR monkeypox[tiab] OR “monkey pox”[tiab] OR “variole du
93 singe”[tiab] OR “variole simienne”[tiab] and in Embase was 'monkeypox'/exp OR 'monkeypox
94 virus'/exp OR monkeypox:ti,ab OR "monkey pox":ti,ab. In AJOL and illissAfrica, separate
95 searches were conducted for each of the following terms: monkeypox, variole du singe, and
96 variole simienne. We aimed to explore how monkeypox epidemiology has evolved regarding
97 incidence, case characteristics, clades, transmission, and case fatality rate. We also sought to
98 explore the risk factors for acquiring human monkeypox.

99
100 After all articles were identified from the four databases and duplicates removed, screening of
101 the title and abstract was performed in duplicate by two researchers (EMB [author] and BVD).
102 Articles that seemed to contain relevant data for the review objectives, which included all age
103 populations, were selected for full-text screening. Excluded were non-human studies, modelling

5Final_Rev_8Nov2021

104 studies that did not provide original data, articles that focused primarily on smallpox, and articles
105 with data not related to the topics of interest. In cases of doubt, the article was selected for full-
106 text screening. Full text articles were then reviewed to determine whether at least one of the
107 review objectives was met. At this stage, other articles such as conference abstracts or narrative
108 reviews were also excluded. The first 10% of full text articles was critically evaluated in
109 duplicate by two researchers (EMB and BVD), and the remaining 90% were reviewed by EMB.
110 Each article was then further reviewed during data-extraction. Some additional exclusions
111 occurred in this step. For example, for articles with similar results from largely identical data
112 sets, only one article was included, generally the most recent. In some instances, there was a
113 partial overlap of data, such that different articles included the same cases plus some unique
114 cases. In these situations, only the unique cases in each article were included in the data
115 extraction sheet. One researcher (EMB) created the data extraction sheet for the eligible articles,
116 and these were reviewed by a second researcher (RVH). A random check of 10% of the data
117 extraction was performed by RVH.

118

119 Articles suitable for extraction from the literature searches were case reports, outbreak
120 investigations, epidemiological studies, and surveillance studies. For these types of articles, no
121 formal checklists for critical appraisal are available, so no formal quality assessments were
122 performed. Information on study quality as reported by the authors of the selected articles were
123 added as comments in the data extraction sheet.

124

125 In addition to the four primary search sources, seven sources of grey literature and Google were
126 searched during weeks 41-44 of 2020. These sources were the websites of the World Health

5Final_Rev_8Nov2021

127 Organization (WHO), specifically a review of the Weekly Bulletins on Outbreaks and other
128 Emergencies, United States Centers for Disease Control and Prevention (CDC), Africa CDC,
129 Nigeria CDC, African Field Epidemiology Network, Epicentre, and ProMed. The Google search
130 was performed on the African countries known to have monkeypox cases, including a check on
131 the websites of their ministries of health. No formal search strategy was employed, and therefore
132 no denominator on number of reports is described. One researcher performed the search of the
133 grey literature (LM) and a second researcher (EMB) reviewed the findings and added the
134 relevant information to the data extraction sheet.

135

136 **Pooled Analysis**

137 For age at monkeypox infection, a weighted average of the median ages per decade was
138 calculated, based on investigations where median age was reported and on single cases where
139 age was presented. In each respective decade, these single cases were treated as a unit, and
140 median age determined.

141

142 Data on case fatality rate (CFR) were pooled, and 95% confidence intervals (CIs) were
143 calculated using the binomial (Clopper-Pearson) exact method. Both overall CFR and CFR per
144 clade were calculated. Since specific clade data were not always reported in the literature, we
145 used the geographical spread of the clades as described by WHO [12] to assign the clade variant.
146 Monkeypox cases from the DRC, Gabon, Central African Republic (CAR), South Sudan, and
147 Republic of the Congo were assumed to be of the Central African clade, while cases in all other
148 countries were assumed to be of the West African clade. Cameroon was not included in the

5Final_Rev_8Nov2021

149 number of cases per clade or the calculation of CFR by clade, as WHO has reported that both
150 clades have been detected there [12].

151

152 **Case Definitions**

153 Case definitions were not standardized across sources, but in general the definitions displayed in
154 Table 1 were used.

155

156 **Table 1. Monkeypox Case Definitions**

Type of case	Definition
Suspected	Sudden onset of high fever, followed by a vesicular-pustule eruption presenting predominantly on the face, palms of the hands, and soles of the feet; or the presence of at least 5 smallpox type scabs.
Confirmed	Suspected case with laboratory confirmation (Positive IgM Antibody, PCR, or virus isolation).
Probable	Suspected case with no possibility of laboratory confirmation, but with epidemiological link to a confirmed case.
Possible	Vesicular, pustular or crusted rash, not diagnosed as chickenpox by the family or the health-care provider [13]. History of fever and vesicular or crusty rash [14]. Individual met one of the epidemiologic criteria or demonstrated elevated levels of orthopoxvirus-specific IgM and had unexplained rash and fever and ≥ 2 other signs or symptoms from the clinical criteria [15].

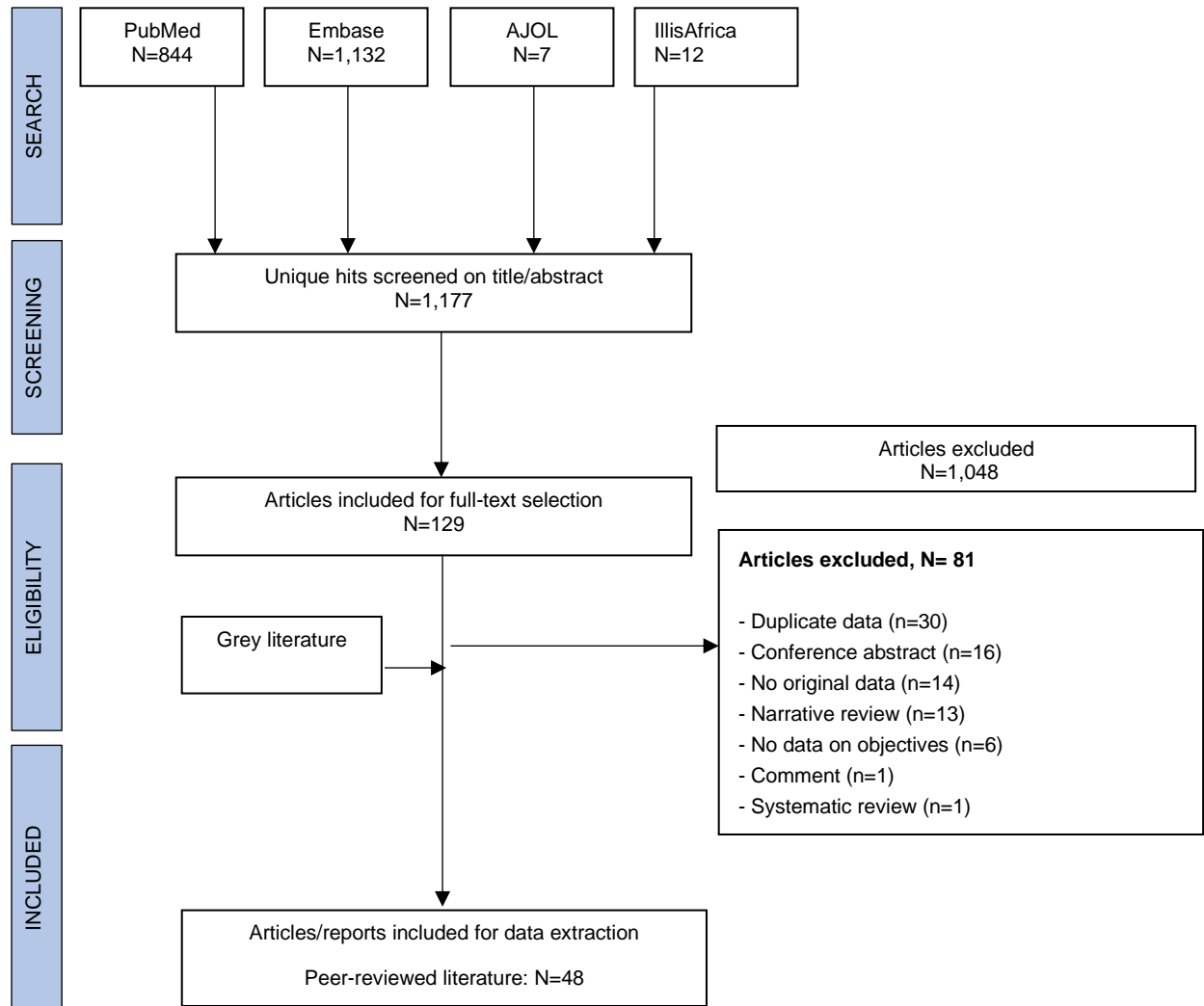
157

5Final_Rev_8Nov2021

158 **Results**

159 The search strategy yielded a total of 1,995 publications, 129 of which were selected for full-text
160 screening. Of these, 48 articles were suitable for data extraction. An additional 18 records from
161 the grey literature (primarily the WHO website) were also included for data extraction. The
162 PRISMA flowchart of the selection process for the systematic review is in shown in Fig 1.

163



164

165 **Fig 1. PRISMA flowchart.**

166

5Final_Rev_8Nov2021

167 **Number of reports by country**

168 Monkeypox data from the DRC accounted for approximately one-third of the eligible articles [5,
169 13, 14, 16-28]. The remaining articles had monkeypox data from the CAR [29-35], United States
170 (US) [36-41], Nigeria [5, 42-44], Republic of the Congo [15, 45-47], Sierra Leone [42, 48, 49],
171 Cameroon [5, 50], Côte d'Ivoire [51, 52], Gabon [53, 54], United Kingdom (UK) [55, 56], Israel
172 [57], Liberia [42], Singapore [8], and South Sudan [formerly Sudan] [58]. (Note: two articles [5,
173 42] described data for more than one country, therefore the total number of articles per country
174 exceeds 48.) The 18 grey literature reports were from the CAR [59-62], DRC [63-66], Cameroon
175 [65, 67, 68], Republic of the Congo [69-71], Liberia [72, 73], Nigeria [68, 74], UK [7], and US
176 [6]. All but two sources [17, 45] reported on the epidemiology of monkeypox; these two were
177 peer-reviewed articles on risk factors for acquiring monkeypox.

178

179 **Number of cases by country**

180 We identified 28 peer-reviewed articles [5, 8, 14, 15, 18, 20, 21, 29-35, 42, 46-58] and 15 reports
181 from the grey literature [6, 7, 59-65, 67-69, 72-74] with data on the number of confirmed,
182 probable, and/or possible monkeypox cases, for a total of 1,347 cases, and an additional 28,815
183 suspected cases from the DRC. These data are displayed in Fig 2 – 6 (and S1 Table) by decade,
184 starting with the 1970s, when the first cases were detected [5, 42, 51].

185

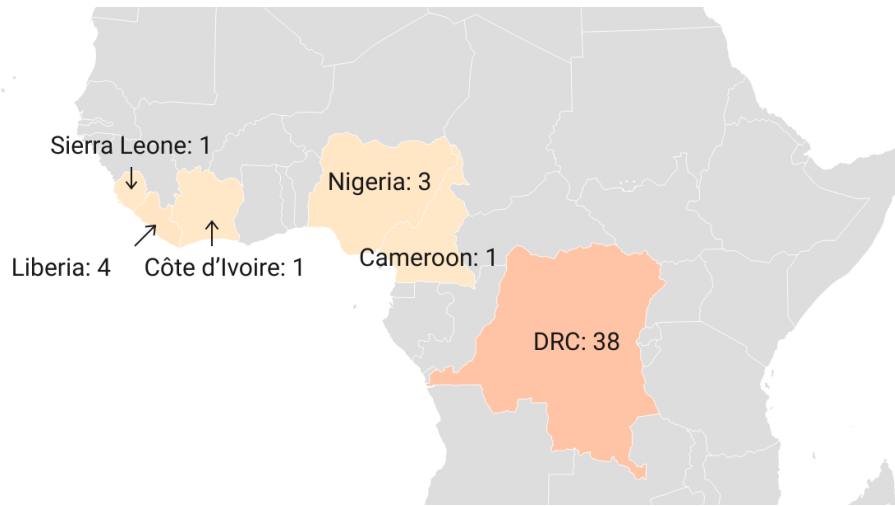
186 During the 1970s, a total of 48 confirmed and probable monkeypox cases were reported in six
187 African countries, namely the DRC, Cameroon, Côte d'Ivoire, Liberia, Nigeria, and Sierra
188 Leone, with most cases occurring in the DRC (n=38) (Fig 2).

189

190

5Final_Rev_8Nov2021

191



192

193

194

195 **Fig 2. Number of confirmed, probable, and/or possible monkeypox cases between 1970-**

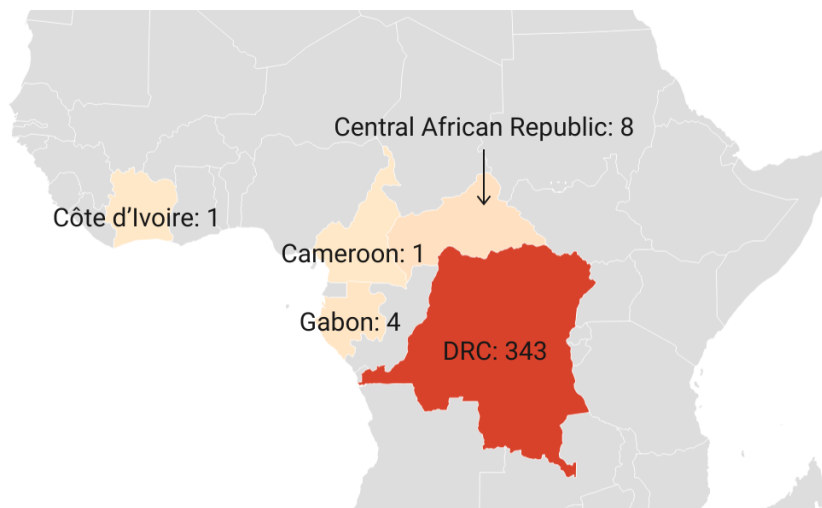
196 **1979.** [5, 42, 51]

197

198 In the 1980s compared to the 1970s, a 9-fold increase in the number of confirmed and probable

199 monkeypox cases was observed in the DRC (n=343). In addition, 14 other cases were spread

200 among four other African countries (Fig 3).



201

202 **Fig 3. Number of confirmed, probable, and/or possible monkeypox cases between 1980-**

203 **1989.** [20, 21, 31, 34, 50, 52, 54]

5Final_Rev_8Nov2021

204

205 Cases continued to increase in the 1990s, with 511 confirmed, probable, and/or possible

206 monkeypox cases reported in DRC and 9 confirmed cases in Gabon (Fig 4).

207



208

209

210 **Fig 4. Number of confirmed, probable, and/or possible monkeypox cases between 1990-**

211 **1999.** [14, 53]

212

213 Between 2000 and 2009, monkeypox cases were reported in three African countries (DRC,

214 Republic of the Congo, and South Sudan) (Fig 5), but between 2010 and 2019, cases were found

215 in seven African countries (Cameroon, CAR, DRC, Liberia, Nigeria, Sierra Leone, and Republic

216 of the Congo) (Fig 6). Compared to the last three decades of the 20th century, outbreaks as of the

217 year 2000 were greater in total number of cases and fewer in singular case reports.

218

5Final_Rev_8Nov2021



219
220

221 **Fig 5. Number of confirmed, probable, and/or possible monkeypox cases between 2000-**
222 **2009.** [6, 18, 46, 58, 69] * Number reflects suspected cases, since as of the year 2000, the
223 number of suspected cases was primarily reported by the DRC.

224
225



226
227
228

229 **Fig 6. Number of confirmed, probable, and/or possible monkeypox cases between 2010-**
230 **2019.** [7, 8, 15, 18, 29, 30, 32, 33, 35, 47-49, 55-57, 59-67, 72-74] * Number reflects suspected
231 cases, since as of the year 2000, the number of suspected cases was primarily reported by the
232 DRC.

5Final_Rev_8Nov2021

233

234 The DRC is the country most affected by monkeypox, and no other country has reported
235 monkeypox cases continuously during the past five decades. As of the year 2000, however, the
236 number of suspected cases, rather than confirmed, probable, and/or possible cases, was primarily
237 reported, as shown in Fig 5 (2000-2009) and Fig 6 (2010-2019). More recently, between January
238 and September 2020, another 4,594 suspected cases were reported for the DRC [66]. The second
239 most affected country is Nigeria, due to the 181 confirmed and probable cases from the outbreak
240 that started in September 2017 [74]. (Note: 183 cases are noted in the Nigeria CDC report [74],
241 but two cases originating from Nigeria were diagnosed in Israel [57] and Singapore [8] and
242 considered travel-related events for these respective countries. The three UK cases that
243 originated in Nigeria [7, 55] are not among the 183 cases in the Nigeria CDC report.) The third
244 and fourth most affected countries with confirmed, probable, and/or possible cases of
245 monkeypox are the Republic of the Congo (n=97) and the CAR (n=69). All other African
246 countries had less than 20 confirmed and probable monkeypox cases in total over the past five
247 decades.

248

249 Monkeypox was not reported outside Africa until 2003, when an outbreak of 47 confirmed or
250 probable cases occurred in the US following exposure to infected pet prairie dogs, which had
251 acquired monkeypox virus from infected exotic animals imported from Ghana [6, 40]. In recent
252 years, there have been several travel-associated cases of monkeypox, all following exposures in
253 Nigeria. There was one case in Israel in 2018 [57], three in the UK (two in 2018 [55]; one in
254 2019 [7]), and one in Singapore in 2019 [8]. A fourth case in the UK (2018) was the result of
255 nosocomial transmission to a healthcare worker [56].

5Final_Rev_8Nov2021

256

257 **Number of cases by clade**

258 There are two distinct genetic clades of monkeypox, the Central African (or Congo Basin) clade
259 and the West African clade. Only 10 peer-reviewed articles [8, 23, 29, 35, 40, 44, 48, 49, 57, 58]
260 and one report from the grey literature [63] described specific data on these variants. Therefore,
261 as noted above in the Methods section, in our calculation of data by clade, we separated the
262 clades according to the geographical division as described by WHO [12].

263

264 Table 2 shows the number of cases per clade per decade. A plot of these data (Fig 7) reveals a
265 similar pattern of evolution in the number of cases for both clades. By far, most cases were
266 infected with the Central African clade, which was found in the CAR [29, 35], DRC [23, 63],
267 and South Sudan [58]. The outbreak in the US (2003) [40] and the outbreak in Nigeria (which
268 started in 2017) [44] cover the largest part of the West African clade cases. This latter clade was
269 also found in Sierra Leone [48, 49] and the travel-related cases in Israel [57] and Singapore [8].
270 Preliminary sequencing data of two UK cases were also determined to be consistent with the
271 West African clade [55].

272

5Final_Rev_8Nov2021

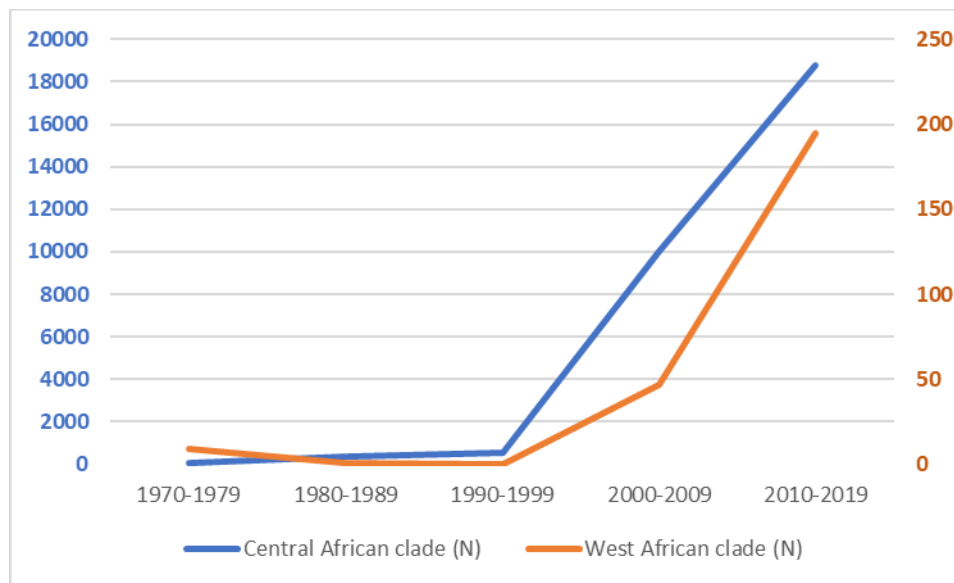
273 **Table 2. Number of Cases per Clade¹**

Decade	Central African Clade (N)	West African Clade (N)	Total Cases
1970-1979	38	9	47
1980-1989	355	1	356
1990-1999	520	0	520
2000-2009	92 confirmed 10,027 suspected ²	47	139 10,027
2009-2019	85 confirmed 18,788 suspected ²	195	280 18,788

274 ¹ The five cases from Cameroon are not included in this table, as clade was not reported in any
275 of the articles and WHO reported that Cameroon is the only country in which both clades have
276 been detected [12].

277 ² Suspected cases are from the Democratic Republic of the Congo, as number of suspected cases
278 rather than confirmed cases were primarily reported. Suspected cases for other countries are not
279 reported since testing of suspected cases was generally undertaken.

280



281

282 **Fig 7. Evolution of number of cases per clade.** For 2000-2019, the numbers for the Central
283 African clade are based largely on suspected cases, per the reporting system by the Democratic
284 Republic of the Congo.

285

5Final_Rev_8Nov2021

286 **Number of suspected cases versus confirmed, probable and/or possible cases**

287 Fifteen peer-reviewed articles and 12 reports from the grey literature described the number of
288 suspected vs. confirmed, probable, and/or possible cases from the various outbreaks (S2 Table).

289 One grey literature source [63] and all but two peer-reviewed articles [15, 25] described the
290 number of individuals tested among the suspected cases, and this varied widely from 5% to
291 100%, with the proportion of tested cases found to have confirmed or probable monkeypox
292 ranging from 37.5% to 91.7%. In comparison, none of the 10 WHO reports describe the number
293 suspected cases tested, and in seven of these reports [60, 62, 65-67, 71, 73], the percentage of
294 confirmed cases among all tested and non-tested suspected cases was less than 15%.

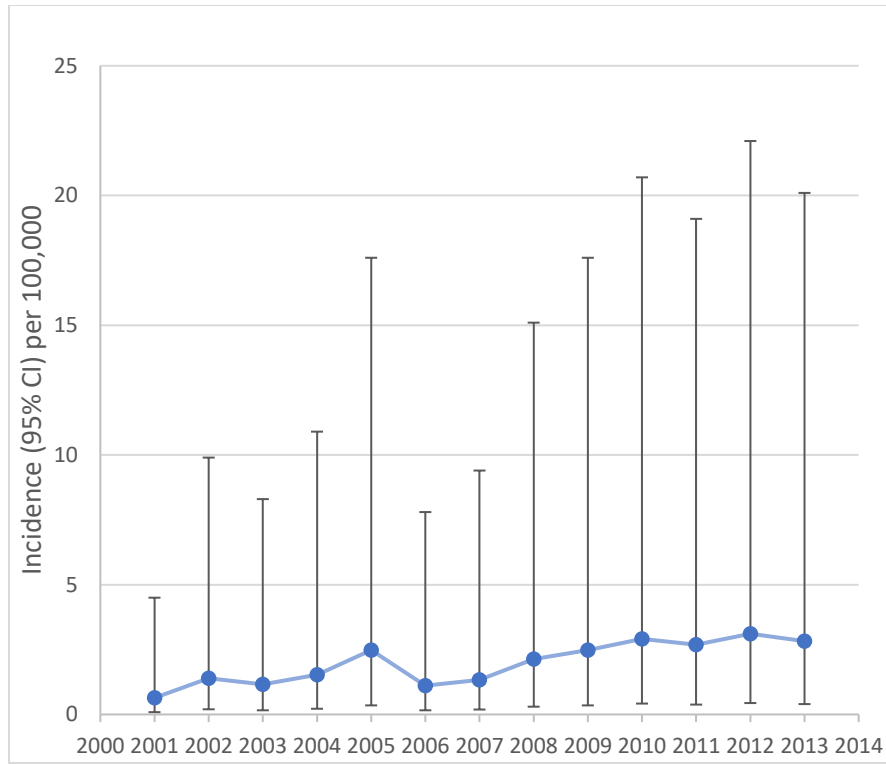
295

296 **Incidence of monkeypox**

297 The incidence rate of monkeypox was reported in only six articles, all peer-reviewed, three with
298 data from the DRC [13, 18, 28] and three from the CAR [32-34]. Surveillance data of suspected
299 monkeypox cases in the DRC showed that the incidence increased from 0.64/100,000 in 2001 to
300 2.82/100,000 in 2013 (Fig 8) [18]. Even with the removal of cases from areas of active
301 surveillance, including the Sankuru district of the DRC, the investigators found that the increases
302 remained substantial [18]. Between November 2005 and November 2007, the average annual
303 cumulative incidence of confirmed monkeypox from nine health zones in the Sankuru district
304 was 5.53 per 10,000, ranging from 2.18 to 14.42 per 10,000 [28]. An overall attack rate of
305 confirmed or probable monkeypox in a 2015 outbreak in the CAR was calculated to be 2 per
306 10,000 persons [32], while an outbreak in 2016 had a reported attack rate of 50 per 10,000 for
307 suspected and confirmed cases [33].

308

5Final_Rev_8Nov2021



309

310 **Fig 8. Incidence rate of suspected monkeypox cases per 100,000 (95% CI) individuals in the**
311 **DRC, 2001-2013.** Data from Hoff et al [18].

312

313 **Secondary attack rate**

314 Only 16 peer-reviewed articles reported secondary attack rates (SARs). Details are presented in
315 S3 Table. A review of these articles did not establish any evolution in SAR over time. More than
316 half of the articles (9/16) reported an SAR of 0% [8, 23, 30, 42, 49-52, 57], and this spanned the
317 decades from the 1970s through 2010-2019. Similarly, over those same five decades, the SAR
318 ranged from 0.3-10.2% in 6/16 articles [5, 14, 20, 22, 54, 56]. In the remaining article, a median
319 SAR of 50% was reported in an outbreak among 16 households [25].

320

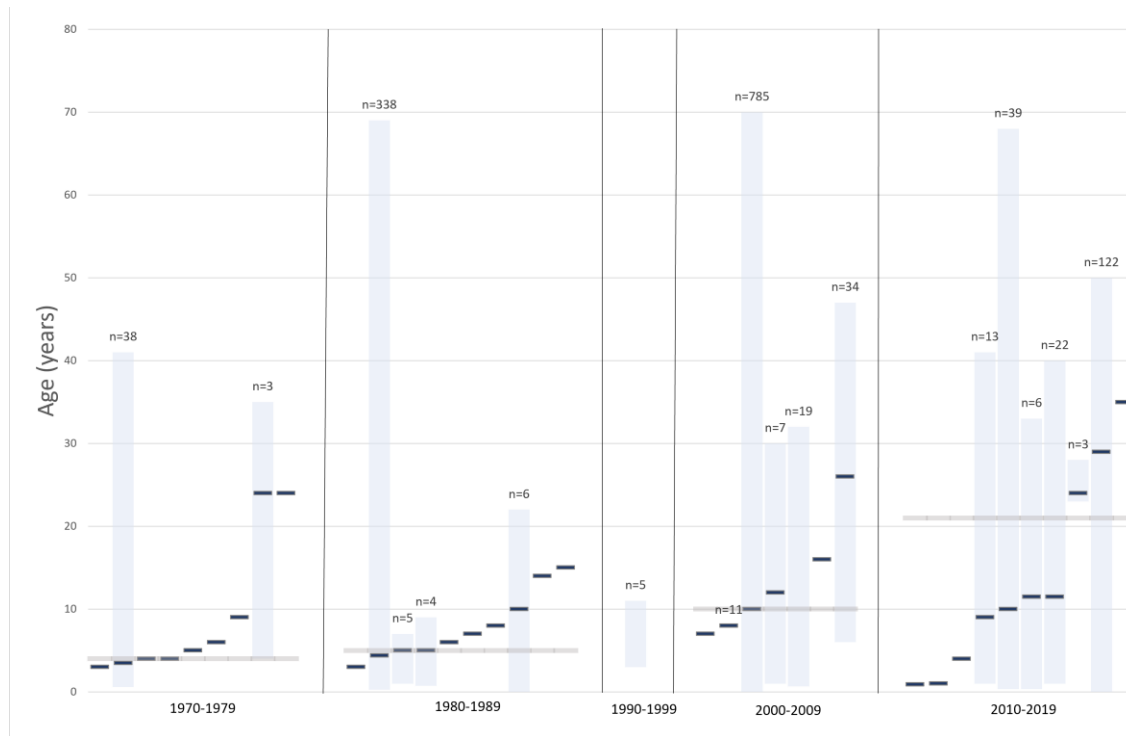
5Final_Rev_8Nov2021

321 **Demographic characteristics**

322 Data on age and sex of confirmed, probable, and/or possible monkeypox cases in Africa are
323 presented in S4 Table. Age was described in 31 peer-reviewed articles and in one report from the
324 grey literature and the sex of individuals was presented in 27 peer-reviewed articles. As shown in
325 Fig 9, the weighted average of the median age of monkeypox infection in Africa has evolved
326 from 4 and 5 years old in the 1970s and 1980s to 10 and 21 years old in the 2000s and 2010s.
327 Overall, males represented $\geq 50\%$ of cases in most outbreaks of two or more cases as well as in
328 singular case reports. Cases outside of Africa also occurred more frequently in males and
329 primarily in adults [8, 40, 55-57]. Only nine peer-reviewed articles [8, 15, 23, 35, 44, 49, 55-57]
330 reported data on occupation in confirmed, probable and/or possible cases. Commonly reported
331 occupations included traders [44], students [44], artisans [44], healthcare professionals [35, 44,
332 56], farming [23, 44, 49], hunting [15], and transportation [35]. Children was listed as an
333 occupation in 8% of 91 cases that reported occupation during the first year of the recent Nigerian
334 outbreak (i.e., Sep 2017 – Sep 2018) [44]. Among the confirmed and further characterized US
335 cases 10 of 34 (29%) were less than 18 years of age [40].

336

5Final_Rev_8Nov2021



337
338
339
340

Fig 9. Median age and range of confirmed, probable and/or possible monkeypox cases in

341 **Africa per decade.** Blue bars without range refer to the age of a single case. The grey horizontal
342 line represents the weighted median. No data on median ages could be retrieved for the 1990s.

343

344 **Smallpox Vaccination Status**

345 In 21 peer-reviewed articles, information about smallpox vaccination status was reported for
346 confirmed, probable, and/or possible monkeypox cases. In 11 articles, describing outbreaks from
347 10 different countries, investigators reported that none of the 49 cases were vaccinated. These
348 countries were Cameroon [5, 50], Liberia [42], Nigeria [42], Sierra Leone [42], CAR [30, 31,
349 34], Republic of the Congo [46], DRC [23], Côte d'Ivoire [51], South Sudan [58], and the UK
350 [56]. The outbreaks in these countries were small, with one to six cases per outbreak, except for
351 the Republic of the Congo with 11 cases [46] and South Sudan with 19 cases [58]. In the 10
352 other articles, which reported data from outbreaks in the DRC [1981-2013] and US [2003], the

5Final_Rev_8Nov2021

353 proportion of monkeypox cases with a history of prior smallpox vaccination ranged from 4 –
354 21% [13, 14, 19-21, 25, 26, 28, 40, 41], illustrating that the majority of cases (approximately 80
355 – 96%) occurred in unvaccinated individuals. The highest percentage of vaccinated cases (21%)
356 was found in the US outbreak [40]. In a study of confirmed and suspected cases in the CAR,
357 19.2% (5/26) had a smallpox vaccination scar, and the overall attack rate was lower among
358 vaccinated individuals (0.95/1000) compared to unvaccinated individuals (3.6/1000) [33].

359

360 **Case fatality rates**

361 Case fatality rates (CFR) of confirmed, probable, and/or possible cases of human monkeypox
362 were described in 28 peer-reviewed articles and 10 reports from the grey literature, and age at
363 death in 11 peer-reviewed articles and one grey literature report. The details of these data are
364 described in S5 Table. Across all countries, the calculated pooled estimate CFR was 8.7% (Table
365 3). When the data were separated by clade, the CFR for the Central African clade (10.6%, 95%
366 CI: 8.4 – 13.3%) was significantly higher than that of the West African clade (3.6%, 95% CI: 1.7
367 – 6.8%). When only African countries were included for the West African clade, the trend
368 remained. All nine deaths reported for the West African clade occurred in the recent Nigerian
369 outbreak (which had 181 confirmed or probable cases) [74]. There were no deaths in the cases
370 outside of Africa [6, 8, 55-57]. Among the reports that included information on age at death,
371 there were a total of 63 deaths (S5 Table). From the 1970s – 1990s, 100% of deaths (47/47) were
372 in children younger than 10 years of age. Over the last two decades (2000-2019), only 37.5%
373 (6/16) of deaths occurred in children <10 years old. A mean age of 27 years was reported for
374 seven deaths among the 122 confirmed or probable cases of monkeypox reported in the first year
375 of the Nigerian outbreak (September 2017-September 2018) [44].

5Final_Rev_8Nov2021

376 **Table 3. Pooled case fatality rate in confirmed, probable, and/or possible monkeypox cases**

Countries/Clade	Case Fatality Rate	95% CI ¹
All countries ²	78/892 = 8.7%	7.0% – 10.8%
Central African clade ³	68/640 = 10.6%	8.4% – 13.3%
West African clade ⁴	9/247 = 3.6%	1.7% – 6.8%
West African clade, African countries only	9/195 = 4.6%	2.1% – 8.6%

377 ¹ Exact binomial method (Clopper-Pearson).

378 ² The five cases from Cameroon are included in the “all countries” case fatality rate (CFR)
379 calculation, but not in the calculation of CFR by clade, since WHO reported that Cameroon is the
380 only country in which both clades have been detected [12]. The CFR without the inclusion of
381 Cameroon is also 8.7% (77/887).

382 ³ Central African clade includes the following countries: Central African Republic, Democratic
383 Republic of the Congo, Republic of the Congo, and South Sudan.

384 ⁴ West African clade includes the following countries: Côte d’Ivoire, Liberia, Nigeria, Sierra
385 Leone, Israel, Singapore, United Kingdom, and United States.

386

387

388 **Mode of Transmission and Risk Factors**

389 In 29 peer-reviewed articles, attempts were made to establish the mode of transmission for
390 confirmed, probable, and/or possible monkeypox cases. The transmission details, by country,
391 including number of cases and mode of transmission, are summarized in S6 Table.

392

393 A study from the 1980s involving 338 monkeypox cases from the DRC concluded that an animal
394 source was suspected in 72.5% (245/338) of cases and a human source in 27.5% (93/338) of
395 cases [21]. In contrast, in an investigation of 419 cases from the DRC in the 1990s, only 22%
396 were primary cases (i.e., a person who reported no contact with another person with
397 monkeypox), while 78% were secondary cases (i.e., monkeypox in a person who had contact
398 with an infected person 7-21 days before onset of disease) [14]. Data from the Nigerian outbreak
399 (Sept 2017-Sept 2018) found that transmission was unknown for 62.3% (76/122) of cases [44].
400 Of the remaining 46 cases, 36 or 78.3% had an epidemiological link to people with similar
401 lesions before the onset of monkeypox and 10 or 8.2% reported contact with animals [44].

5Final_Rev_8Nov2021

402

403 All but one of the cases outside of Africa were the result of confirmed or suspected animal-to-
404 human transmission [6, 8, 41, 55, 57]. This exception was a human-to-human transmission in the
405 UK in a healthcare worker who provided care to one of the UK confirmed monkeypox cases
406 [56].

407

408 The risk factors or risk behaviors for contracting monkeypox were reported in only five studies
409 from three countries (DRC [17, 22, 26], US [41], Republic of the Congo [45]), and in general
410 reinforced what has been suspected factors. For example, sleeping in the same room or bed,
411 living in the same household, or drinking or eating from the same dish were risk behaviors
412 associated with human-to-human transmission [22, 26]. On the other hand, sleeping outside or on
413 the ground or living near or visiting the forest were identified as factors that increase the risk for
414 exposure to animals and subsequent risk for animal-to-human transmission of monkeypox [17,
415 45]. Unexpectedly, assisting with toileting and hygiene and laundering clothes did not have a
416 significant association with acquiring monkeypox, and preparing wild animal for consumption or
417 eating duiker were identified as protective factors [26]. After adjusting for smallpox vaccination
418 status, daily exposure to sick animals (adjusted odds ratio [aOR]: 4.0 (95% CI: 1.2–13.4) or
419 cleaning their cages/bedding (aOR: 5.3 (95% CI: 1.4–20.7) were identified as risk factors for
420 acquiring monkeypox in the 2003 outbreak in the US [41]. Touching or been scratched by an
421 infected animal sufficient to sustain a break in skin were each found to be both significant and
422 nonsignificant risk factors [41].

423

5Final_Rev_8Nov2021

424 **Discussion**

425 This systematic review provides a comprehensive overview of the evolution of the epidemiology
426 of monkeypox since it was first detected in humans in 1970. Using a structured format, we
427 describe the greater than 10-fold increase in confirmed, probable, and/or possible monkeypox
428 cases over the past 5 decades, from 48 cases in the 1970s to 520 cases in the 1990s. Increases in
429 the recent two decades may be confounded by the numbers coming out of the DRC, the country
430 with the most reported cases. Beginning in the year 2000, the DRC started reporting primarily
431 the number of suspected cases, and these have increased from >10,000 cases in 2000-2009 [18]
432 to >18,000 in 2010-2019 [18, 63-65]. In the first nine months of 2020 alone, another 4,594
433 suspected cases were reported in the DRC [66]. The WHO bulletin of the 12-month data for
434 2020, which was available following completion of this systematic review, reported a total of
435 6,257 suspected cases [75].

436

437 As a result of the recent outbreak, the number of confirmed and probable cases in Nigeria has
438 dramatically escalated as well, from 3 cases in the 1970s [5, 42] to 181 cases in 2017-2019 [74].
439 The surge in cases in the DRC from the 1990s (n=511) through 2000-2019 (>28,000) is of a
440 similar magnitude. The data from these two countries therefore suggest that the trend is not due
441 to improved reporting alone. This is consistent with the analysis by Hoff and colleagues [18]
442 who found that the rise in monkeypox cases in the DRC from 2001-2013 were likely actual
443 disease increases and not merely a result of improved surveillance, since the reporting system
444 was considered stable by 2008.

445

5Final_Rev_8Nov2021

446 There are mounting concerns about the geographical spread and further resurgence of
447 monkeypox. Over the past 5 decades, monkeypox outbreaks have been reported in 10 African
448 countries and 4 countries outside of Africa. In addition to the re-emergence of monkeypox in
449 Nigeria after nearly 40 years, in the years between 2010 and 2019, cases also re-emerged in
450 Liberia and Sierra Leone (after 4 decades) and in the CAR (after 3 decades). First outbreaks
451 emerged in the Republic of the Congo in 2000-2009 and in South Sudan (first appearance in East
452 Africa) in 2005. From 2003, cases of monkeypox have occurred outside of Africa. Infected
453 rodents from Ghana, a country that has not reported any human cases as of this review, were
454 imported into the US. Animal-to-animal transmission then led to animal-to-human transmission,
455 ultimately resulting in an outbreak of 47 confirmed or probable cases [6]. Beginning in 2018
456 through 2021, adults travelling from Nigeria were diagnosed with monkeypox in Israel [57], the
457 UK [7, 55, 76], Singapore [8], and the US [77]. These cases were suspected to be the result of
458 animal-to-human transmission. Three additional cases, one resulting from a nosocomial infection
459 and two via transmission to a family member, occurred in the UK [56, 76, 78]. Of the four
460 monkeypox cases imported into the UK, two have been associated with local transmission and
461 each has resulted in either one or two subsequent cases, illustrating that infected travelers can act
462 as index cases of local outbreaks. Interestingly, the infection imported to the UK in May 2021
463 [76] and to the US in July 2021[77] occurred at a time where the reported cases of monkeypox in
464 Nigeria were at a very low level. Only 32 suspected cases of disease have been reported to the
465 authorities since the beginning of 2021 [79]. Significant human-to-human transmission has been
466 reported as well in the CAR [30, 33, 35], DRC [14, 21, 25], Republic of the Congo [46], South
467 Sudan [58], and Nigeria [5, 44], demonstrating the susceptibility of both clades to this type of

5Final_Rev_8Nov2021

468 transmission. Mathematical modelling of human-to-human transmission found that monkeypox
469 has epidemic potential, with $R_0 > 1$ [80].

470

471 There has been much discussion about the reasons for the resurgence in monkeypox cases, the
472 most prevailing being waning immunity, although deforestation may be a factor or can even act
473 in potentiation [81-83]. Monkeypox virus, variola virus (smallpox), and vaccinia virus (smallpox
474 vaccination) are closely related orthopoxviruses [1]. At the time when smallpox was rampant, no
475 cases of monkeypox were reported. This could have been either because the focus was on
476 smallpox and the presentation of the two diseases are similar or the lack of laboratory
477 confirmation of the etiologic agent led to an assumption of smallpox [84]. Historical data have
478 shown that smallpox vaccination was approximately 85% protective against monkeypox [2].
479 Following the successful vaccination campaign against smallpox, the disease was declared
480 eradicated in 1980 by the World Health Assembly, and routine vaccination was halted [3].
481 Using statistical modeling, Nguyen and colleagues [81] estimated that in 2016, the year before
482 the outbreak in Nigeria began, only 10.1% of the population was vaccinated, and the population
483 immunity, which takes into account waning individual-level immunity, was 2.6%, down from
484 65.6% in 1970. By 2018, the vaccinated population had decreased to 9.3% and the estimated
485 population immunity had declined to 2.2%. In our review of the literature, we found that
486 unvaccinated individuals accounted for approximately 80-96% of monkeypox cases.

487

488 One other possible factor influencing the resurgence of monkeypox might be the genetic
489 evolution of the monkeypox virus. An analysis of the virus genome diversity of 60 samples
490 obtained from humans with primary and secondary cases of infection from Sankuru District,

5Final_Rev_8Nov2021

491 DRC, led to the detection of four distinct lineages within the Central African clade and revealed
492 a gene loss in 17% of the samples that seemed to correlate with human-to-human transmission
493 [85].

494

495 Our analysis shows that in the early years (1970-1989), monkeypox was primarily a disease of
496 young children, with a median age at presentation of 4 to 5 years old; this increased to 10 years
497 of age in 2000-2009 and 21 years in 2010-2019. Regarding age at death in monkeypox cases,
498 100% of deaths were in children <10 years of age in the early years, while for the years 2000-
499 2019, age <10 years accounted for only 37.5% of deaths. These data appear to be consistent with
500 the global intensified smallpox eradication program that began in 1967 [86] and the cease of
501 routine smallpox vaccination by the 1980s following its eradication [3]. In the 2000s, only adults
502 older than 20-25 years would have had a history of smallpox vaccination, leaving the age groups
503 below 20 years vulnerable. Interestingly, the median age of monkeypox cases increased from 10
504 to 21 years in the next decade. Indeed, most cases were either likely too young to have been
505 vaccinated or were born after the cessation of routine smallpox vaccination, as in the more recent
506 outbreaks.

507

508 **Strengths and Limitations**

509 The strengths of this review are that basing on Cochrane [10] and PRISMA [11], it included a
510 broad search strategy on monkeypox worldwide, without time or language limits, which reduced
511 selection bias. In addition, there was a thorough review of the grey literature. Overall, more than
512 60 relevant sources were identified for comprehensive data extraction. There are also limitations.

5Final_Rev_8Nov2021

513 First, our ability to present a complete picture of the number of confirmed, probable, and/or
514 possible cases was sometimes limited, as data quantity and quality varied across regions. This is
515 especially true for Central African countries, and in particular the DRC, where a systematic
516 accounting and reporting of the number of cases per year is lacking. The number of cases
517 presented in the maps in this review, especially after 1986 when WHO stopped their surveillance
518 program in the DRC, are likely lower than the actual number of cases [28] and underreporting is
519 quite probable, despite implementation of the Integrated Disease Surveillance and Response in
520 the DRC in 2000 [18]. Furthermore, no national estimates of the number of confirmed cases in
521 the DRC can be made, as polymerase chain reaction testing is infrequently performed in the field
522 [18, 25]. Second, there is a paucity of data on the age of cases, which could call into question the
523 results of our analysis of median age at monkeypox diagnosis. For example, a report from the
524 DRC, published after completion of this systematic review, found a median age of 14 years for
525 confirmed cases in the Tshuapa Province during 2011-2015 [87]. These investigators did note,
526 however, that median age at onset has increased over time [87], which corresponds to our
527 findings. Furthermore, our review of the literature found that age at death from monkeypox has
528 also increased, which is then consistent with our age-at-diagnosis findings. Third, since specific
529 data on clades was infrequently reported, we assigned clades based upon the geographical spread
530 described by WHO [12] and drew conclusions about both number of cases per clade and
531 mortality per clade. These results did not allow for the possibility that one clade may invade
532 other geographies or consider that factors other than clade (e.g., access to healthcare) might
533 account for the mortality differences. Fourth, although more than half of the included articles
534 presented data on transmission of monkeypox, in many studies not all cases could be definitively
535 attributed to either animal-to-human transmission or human-to-human transmission. Therefore,

5Final_Rev_8Nov2021

536 an in-depth analysis about the proportion of cases being infected by human-to-human
537 transmission could not be performed. Fifth, while a changing epidemiology of monkeypox could
538 be linked to the genetic evolution of the monkeypox virus, a review of the literature on the latter
539 was not within scope of our work. Lastly, data on risk factors for acquiring monkeypox are rather
540 scarce, and some incongruous results were found. In one study, for example, eating duiker and
541 preparing wild animal for food were identified as protective factors [26], which appears in
542 contrast to factors identified in animal-to-human transmission cases [15, 29]. Thus, more formal
543 studies of risk factors are warranted.

544

545 **Conclusions**

546 The waning population immunity associated with discontinuation of smallpox vaccination has
547 established the landscape for the resurgence of monkeypox. This is demonstrated by the
548 increases in number of cases and median age of individuals acquiring monkeypox as well as the
549 re-emergence of outbreaks in some countries after an absence of 30-40 years. Further, the
550 appearance of cases outside of Africa highlights the risk for geographical spread and the global
551 relevance of the disease. The possibility for human-to-human transmission is a concern not just
552 among household members, but also among providers of care to diseased individuals. In light of
553 the current environment for pandemic threats, the public health importance of monkeypox
554 disease should not be underestimated. International support for increased surveillance and
555 detection of monkeypox cases are essential tools for understanding the continuously changing
556 epidemiology of this resurging disease.

557

558 **Acknowledgements**

5Final_Rev_8Nov2021

559 The authors would like to thank Babette van Deursen (BVD), Rosa van Hoorn (RVH), Lauren
560 Mason (LM), and Femke van Kessel (FVK), current (LM and FVK) and former (BVD and
561 RVH) employees of Pallas Health Research and Consultancy, for assistance with performing the
562 literature searches (BVD, LM), quality review of the findings (RVH), and creating figures and
563 maps (FVK).

564

5Final_Rev_8Nov2021

565 **References**

- 566 1. (ICTV) ICoToV. Virus Taxonomy: 2020 Release 2021 [Available from:
567 <https://talk.ictvonline.org/taxonomy>.
568 2. Fine PE, Jezek Z, Grab B, Dixon H. The transmission potential of monkeypox virus in human
569 populations. *Int J Epidemiol*. 1988;17(3):643-650.
570 3. Jezek Z, Khodakevich LN, Wickett JF. Smallpox and its post-eradication surveillance. *Bull World*
571 *Health Organ*. 1987;65(4):425-434.
572 4. von Magnus P, Andersen EA, Petersen KB, Birch-Andersen A. A pox-like disease in cynomolgus
573 monkeys. *Acta Path Microbiol Scand*. 1959;46:159.
574 5. Breman JG, Kalisa R, Steniowski MV, Zanutto E, Gromyko AI, Arita I. Human monkeypox, 1970-
575 79. *Bull World Health Organ*. 1980;58(2):165-182.
576 6. Centers for Disease Control and Prevention. Monkeypox [Available from:
577 <https://www.cdc.gov/poxvirus/monkeypox/index.html>.
578 7. Public Health England. Monkeypox case confirmed in England 2019 [Available from:
579 <https://www.gov.uk/government/news/monkeypox-case-confirmed-in-england>.
580 8. Yong SEF, Ng OT, Ho ZJM, Mak TM, Marimuthu K, Vasoo S, et al. Imported Monkeypox,
581 Singapore. *Emerg Infect Dis*. 2020;26(8):1826-1830.
582 9. Beer EM, Rao VB. A systematic review of the epidemiology of human monkeypox outbreaks and
583 implications for outbreak strategy. *PLoS Negl Trop Dis*. 2019;13(10):e0007791.
584 10. Higgins JPT TJ, Chandler J, Cumpston M, Li T, Page MJ, Welch VA (editors). *Cochrane Handbook*
585 *for Systematic Reviews of Interventions version 6.1 (updated September 2020) 2020*. [Available from:
586 Available from www.training.cochrane.org/handbook.
587 11. Moher D, Shamseer L, Clarke M, Ghersi D, Liberati A, Petticrew M, et al. Preferred reporting
588 items for systematic review and meta-analysis protocols (PRISMA-P) 2015 statement. *Syst Rev*. 2015;4:1.
589 12. World Health Organization. Monkeypox 2019 [updated December 9, 2019. Available from:
590 <https://www.who.int/news-room/fact-sheets/detail/monkeypox>.
591 13. Mwanbal PT, Tshioko KF, Moudi A, Mukinda V, Mwema GN, Messinger D, et al. Human
592 monkeypox in Kasai Oriental, Zaire (1996-1997). *Euro Surveill*. 1997;2(5):33-35.
593 14. Aplogan A, Mangindula V, Muamba PT, Mwema GN, Okito L, Pebody RG, et al. Human
594 monkeypox -- Kasai Oriental, Democratic Republic of Congo, February 1996-October 1997. *MMWR Morb*
595 *Mortal Wkly Rep*. 1997;46(49):1168-1171.
596 15. Doshi RH, Guagliardo SAJ, Doty JB, Babeaux AD, Matheny A, Burgado J, et al. Epidemiologic and
597 ecologic investigations of monkeypox, Likouala Department, Republic of the Congo, 2017. *Emerg Infect*
598 *Dis*. 2019;25(2):281-289.
599 16. Eltvedt AK, Christiansen M, Poulsen A. A case report of monkeypox in a 4-year-old boy from the
600 DR Congo: challenges of diagnosis and management. *Case Rep Pediatr*. 2020;2020:8572596.
601 17. Fuller T, Thomassen HA, Mulembakani PM, Johnston SC, Lloyd-Smith JO, Kisalu NK, et al. Using
602 remote sensing to map the risk of human monkeypox virus in the Congo Basin. *Ecohealth*. 2011;8(1):14-
603 25.
604 18. Hoff NA, Doshi RH, Colwell B, Kebela-Illunga B, Mukadi P, Mossoko M, et al. Evolution of a
605 disease surveillance system: An increase in reporting of human monkeypox disease in the Democratic
606 Republic of the Congo, 2001-2013. *Int J Trop Dis Health*. 2017;25(2).
607 19. Hoff NA, Morier DS, Kisalu NK, Johnston SC, Doshi RH, Hensley LE, et al. Varicella coinfection in
608 patients with active monkeypox in the Democratic Republic of the Congo. *Ecohealth*. 2017;14(3):564-
609 574.

5Final_Rev_8Nov2021

- 610 20. Jezek Z, Arita I, Mutombo M, Dunn C, Nakano JH, Szczeniowski M. Four generations of probable
611 person-to-person transmission of human monkeypox. *Am J Epidemiol.* 1986;123(6):1004-1012.
- 612 21. Jezek Z, Grab B, Szczeniowski M, Paluku KM, Mutombo M. Clinico-epidemiological features of
613 monkeypox patients with an animal or human source of infection. *Bull World Health Organ.*
614 1988;66(4):459-464.
- 615 22. Jezek Z, Grab B, Szczeniowski MV, Paluku KM, Mutombo M. Human monkeypox: secondary
616 attack rates. *Bull World Health Organ.* 1988;66(4):465-470.
- 617 23. McCollum AM, Nakazawa Y, Ndongala GM, Pukuta E, Karhemere S, Lushima RS, et al. Case
618 report: Human monkeypox in the kivus, a conflict region of the Democratic Republic of the Congo. *Am J*
619 *Trop Med Hyg.* 2015;93(4):718-721.
- 620 24. Meyer H, Perrichot M, Stemmler M, Emmerich P, Schmitz H, Varaine F, et al. Outbreaks of
621 disease suspected of being due to human monkeypox virus infection in the Democratic Republic of
622 Congo in 2001. *J Clin Microbiol.* 2002;40(8):2919-2921.
- 623 25. Nolen LD, Osadebe L, Katomba J, Likofata J, Mukadi D, Monroe B, et al. Extended Human-to-
624 Human Transmission during a Monkeypox Outbreak in the Democratic Republic of the Congo. *Emerg*
625 *Infect Dis.* 2016;22(6):1014-1021.
- 626 26. Nolen LD, Osadebe L, Katomba J, Likofata J, Mukadi D, Monroe B, et al. Introduction of
627 Monkeypox into a Community and Household: Risk Factors and Zoonotic Reservoirs in the Democratic
628 Republic of the Congo. *Am J Trop Med Hyg.* 2015;93(2):410-415.
- 629 27. Rimoin AW, Kisalu N, Kebela-Ilunga B, Mukaba T, Wright LL, Formenty P, et al. Endemic human
630 monkeypox, Democratic Republic of Congo, 2001-2004. *Emerg Infect Dis.* 2007;13(6):934-937.
- 631 28. Rimoin AW, Mulembakani PM, Johnston SC, Lloyd Smith JO, Kisalu NK, Kinkela TL, et al. Major
632 increase in human monkeypox incidence 30 years after smallpox vaccination campaigns cease in the
633 Democratic Republic of Congo. *Proc Natl Acad Sci U S A.* 2010;107(37):16262-16267.
- 634 29. Berthet N, Nakouné E, Whist E, Selekon B, Burguière AM, Manuguerra JC, et al. Maculopapular
635 lesions in the Central African Republic. *Lancet.* 2011;378(9799):1354.
- 636 30. Besombes C, Gonofio E, Konamna X, Selekon B, Grant R, Gessain A, et al. Intrafamily
637 transmission of monkeypox virus, Central African Republic, 2018. *Emerg Infect Dis.* 2019;25(8):1602-
638 1604.
- 639 31. Herve VMA, Belec L, Yayah G, Georges AJ. Monkeypox in central Africa. About two strains
640 isolated Central African Republic. *Medecine et Maladies Infectieuses.* 1989;19(5):322-324.
- 641 32. Kalthan E, Dondo-Fongbia JP, Yambele S, Dieu-Creer LR, Zepio R, Pamatika CM. [Twelve cases of
642 monkeypox virus outbreak in Bangassou District (Central African Republic) in December 2015]. *Bull Soc*
643 *Pathol Exot.* 2016;109(5):358-363.
- 644 33. Kalthan E, Tenguere J, Ndjapou SG, Koyazengbe TA, Mbomba J, Marada RM, et al. Investigation
645 of an outbreak of monkeypox in an area occupied by armed groups, Central African Republic. *Med Mal*
646 *Infect.* 2018;48(4):263-268.
- 647 34. Khodakevich L, Widy-Wirski R, Arita I. Monkeypox in the Central African Republic. *Bulletin de la*
648 *Societe de Pathologie Exotique et de ses Filiales.* 1985;78(3):311-320.
- 649 35. Nakoune E, Lampaert E, Ndjapou SG, Janssens C, Zuniga I, Van Herp M, et al. A nosocomial
650 outbreak of human monkeypox in the Central African Republic. *Open Forum Infect Dis.*
651 2017;4(4):ofx168.
- 652 36. Update: multistate outbreak of monkeypox--Illinois, Indiana, Kansas, Missouri, Ohio, and
653 Wisconsin, 2003. *MMWR Morb Mortal Wkly Rep.* 2003;52(27):642-646.
- 654 37. Update: multistate outbreak of monkeypox--Illinois, Indiana, Kansas, Missouri, Ohio, and
655 Wisconsin, 2003. *MMWR Morb Mortal Wkly Rep.* 2003;52(25):589-590.
- 656 38. Update: multistate outbreak of monkeypox--Illinois, Indiana, Kansas, Missouri, Ohio, and
657 Wisconsin, 2003. *MMWR Morb Mortal Wkly Rep.* 2003;52(26):616-618.

5Final_Rev_8Nov2021

- 658 39. Update: multistate outbreak of monkeypox--Illinois, Indiana, Kansas, Missouri, Ohio, and
659 Wisconsin, 2003. *MMWR Morb Mortal Wkly Rep.* 2003;52(24):561-564.
- 660 40. Huhn GD, Bauer AM, Yorita K, Graham MB, Sejvar J, Likos A, et al. Clinical characteristics of
661 human monkeypox, and risk factors for severe disease. *Clin Infect Dis.* 2005;41(12):1742-1751.
- 662 41. Reynolds MG, Davidson WB, Curns AT, Conover CS, Huhn G, Davis JP, et al. Spectrum of infection
663 and risk factors for human monkeypox, United States, 2003. *Emerg Infect Dis.* 2007;13(9):1332-1339.
- 664 42. Foster SO, Brink EW, Hutchins DL, Pifer JM, Lourie B, Moser CR, et al. Human monkeypox. *Bull*
665 *World Health Organ.* 1972;46(5):569-576.
- 666 43. Ogoina D, Iroezindu M, James HI, Oladokun R, Yinka-Ogunleye A, Wakama P, et al. Clinical
667 course and outcome of human monkeypox in Nigeria. *Clin Infect Dis.* 2020;71(8):e210-e214.
- 668 44. Yinka-Ogunleye A, Aruna O, Dalhat M, Ogoina D, McCollum A, Disu Y, et al. Outbreak of human
669 monkeypox in Nigeria in 2017-18: a clinical and epidemiological report. *Lancet Infect Dis.*
670 2019;19(8):872-879.
- 671 45. Guagliardo SAJ, Doshi RH, Reynolds MG, Dzabatou-Babeaux A, Ndakala N, Moses C, et al. Do
672 monkeypox exposures vary by ethnicity? Comparison of Aka and Bantu suspected monkeypox cases. *Am*
673 *J Trop Med Hyg.* 2020;102(1):202-205.
- 674 46. Learned LA, Reynolds MG, Wasswa DW, Li Y, Olson VA, Kareem K, et al. Extended interhuman
675 transmission of monkeypox in a hospital community in the Republic of the Congo, 2003. *Am J Trop Med*
676 *Hyg.* 2005;73(2):428-434.
- 677 47. Reynolds MG, Emerson GL, Pukuta E, Karhemere S, Muyembe JJ, Bikindou A, et al. Detection of
678 human monkeypox in the Republic of the Congo following intensive community education. *Am J Trop*
679 *Med Hyg.* 2013;88(5):982-985.
- 680 48. Reynolds MG, Wauquier N, Li Y, Satheshkumar PS, Kanneh LD, Monroe B, et al. Human
681 Monkeypox in Sierra Leone after 44-Year Absence of Reported Cases. *Emerg Infect Dis.* 2019;25(5):1023-
682 1025.
- 683 49. Ye F, Song J, Zhao L, Zhang Y, Xia L, Zhu L, et al. Molecular evidence of human monkeypox virus
684 infection, Sierra Leone. *Emerg Infect Dis.* 2019;25(6):1220-1222.
- 685 50. Tchokoteu PF, Kago I, Tetanye E, Ndoumbe P, Pignon D, Mbede J. [Variola or a severe case of
686 varicella? A case of human variola due to monkeypox virus in a child from the Cameroon]. *Ann Soc Belg*
687 *Med Trop.* 1991;71(2):123-128.
- 688 51. Breman JG, Nakano JH, Coffi E, Godfrey H, Gautun JC. Human poxvirus disease after smallpox
689 eradication. *Am J Trop Med Hyg.* 1977;26(2):273-281.
- 690 52. Merouze F, Lesoin JJ. [Monkeypox: second human case observed in Ivory Coast (rural health
691 sector of Daloa)]. *Med Trop (Mars).* 1983;43(2):145-147.
- 692 53. Monkeypox, 1991. Gabon. *Wkly Epidemiol Rec.* 1992;67(14):101-102.
- 693 54. Meyer A, Esposito JJ, Gras F, Kolakowski T, Fatras M, Muller G. [First appearance of monkey pox
694 in human beings in Gabon]. *Med Trop (Mars).* 1991;51(1):53-57.
- 695 55. Vaughan A, Aarons E, Astbury J, Balasegaram S, Beadsworth M, Beck CR, et al. Two cases of
696 monkeypox imported to the United Kingdom, September 2018. *Euro Surveill.* 2018;23(38).
- 697 56. Vaughan A, Aarons E, Astbury J, Brooks T, Chand M, Flegg P, et al. Human-to-human
698 transmission of monkeypox virus, United Kingdom, October 2018. *Emerg Infect Dis.* 2020;26(4):782-785.
- 699 57. Erez N, Achdout H, Milrot E, Schwartz Y, Wiener-Well Y, Paran N, et al. Diagnosis of Imported
700 Monkeypox, Israel, 2018. *Emerg Infect Dis.* 2019;25(5):980-983.
- 701 58. Formenty P, Muntasir MO, Damon I, Chowdhary V, Opoka ML, Monimart C, et al. Human
702 monkeypox outbreak caused by novel virus belonging to Congo Basin clade, Sudan, 2005. *Emerg Infect*
703 *Dis.* 2010;16(10):1539-1545.

5Final_Rev_8Nov2021

- 704 59. World Health Organization. Regional Office for A. Weekly Bulletin on Outbreak and other
705 Emergencies: Week 31: 29 July - 04 August 2019. Weekly Bulletin on Outbreaks and other Emergencies.
706 2019.
- 707 60. World Health Organization. Regional Office for Africa HEP. Weekly Bulletin on Outbreaks and
708 other Emergencies: week 21: 20 – 26 May 2017. Weekly Bulletin on Outbreaks and other Emergencies.
709 2017:1-16.
- 710 61. World Health Organization. Regional Office for Africa HEP. Weekly Bulletin on Outbreak and
711 other Emergencies: Week 31: 29 July – 04 August 2017. Weekly Bulletin on Outbreaks and other
712 Emergencies. 2017:1-11.
- 713 62. Monkeypox in Central African Republic [press release]. Reliefweb, October 14, 2016 2016.
- 714 63. Laudisoit A, Komba M, Akonda I. Scientific report research bushmeat and monkeypox Yahuma
715 health zone–Aketi health zone-Bombongolo health area. DRC. 2016.
- 716 64. World Health Organization. Regional Office for A. Weekly Bulletin on Outbreak and other
717 Emergencies: Week 01: 29 December 2018 - 04 January 2019. Weekly Bulletin on Outbreaks and other
718 Emergencies. 2019:1-23.
- 719 65. World Health Organization. Regional Office for A. Weekly Bulletin on Outbreak and other
720 Emergencies: Week 01: 30 December 2019 - 05 January 2020. Weekly Bulletin on Outbreaks and other
721 Emergencies. 2020.
- 722 66. World Health Organization. Regional Office for A. Weekly Bulletin on Outbreak and other
723 Emergencies: Week 41: 05 - 11 October 2020. 2020.
- 724 67. World Health Organization. Regional Office for A. Weekly Bulletin on Outbreak and other
725 Emergencies: Week 31: 28 July - 3 August 2018. Weekly Bulletin on Outbreak and other Emergencies.
726 2018:1-24.
- 727 68. World Health Organization. Regional Office for A. Weekly Bulletin on Outbreak and other
728 Emergencies: Week 11: 09 - 15 March 2020. Weekly Bulletin on Outbreaks and other Emergencies.
729 2020.
- 730 69. Congo: Monkeypox infects 60 in north [press release]. Reliefweb, September 25, 2007 2007.
- 731 70. World Health Organization. Regional Office for A. Weekly Bulletin on Outbreak and other
732 Emergencies: Week 21: 20 - 26 May 2019. Weekly Bulletin on Outbreaks and other Emergencies.
733 2019:1-27.
- 734 71. World Health Organization. Regional Office for Africa HEP. Weekly Bulletin on Outbreaks and
735 other Emergencies: Week 41: 7 – 13 October 2017. Weekly Bulletin on Outbreaks and other
736 Emergencies. 2017:1-14.
- 737 72. Monkeypox confirmed in Liberia [press release]. April 11, 2018 2018.
- 738 73. World Health Organization. Regional Office for Africa HEP. Weekly Bulletin on Outbreaks and
739 other Emergencies: Week 1: 30 December 2017-5 January 2018. 2018.
- 740 74. Nigeria Centre for Disease Control. Nigeria monkeypox monthly situation report. 2019
741 December 2019.
- 742 75. World Health Organization. Weekly Bulletin on Outbreaks and other Emergencies: Week 4: 18 -
743 24 January 2021. Weekly Bulletin on Outbreak and other Emergencies. 2021:1-18.
- 744 76. Monkeypox - United Kingdom of Great Britain and Northern Ireland (Nigeria) [press release].
745 June 11, 2021 2021.
- 746 77. CDC and Texas Confirm Monkeypox In U.S. Traveler [press release]. July 16, 2021 2021.
- 747 78. Monkeypox - United Kingdom of Great Britain and Northern Ireland [press release]. July 8, 2021
748 2021.
- 749 79. Nigeria Centre for Disease Control. Monkeypox Situation Report in Nigeria. 2021 May 31, 2021.
- 750 80. Grant R, Nguyen LL, Breban R. Modelling human-to-human transmission of monkeypox. Bull
751 World Health Organ. 2020;98(9):638-640.

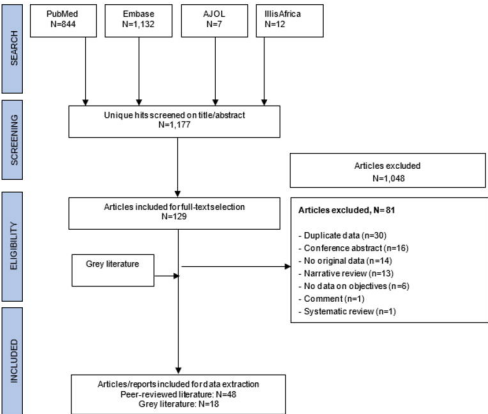
5Final_Rev_8Nov2021

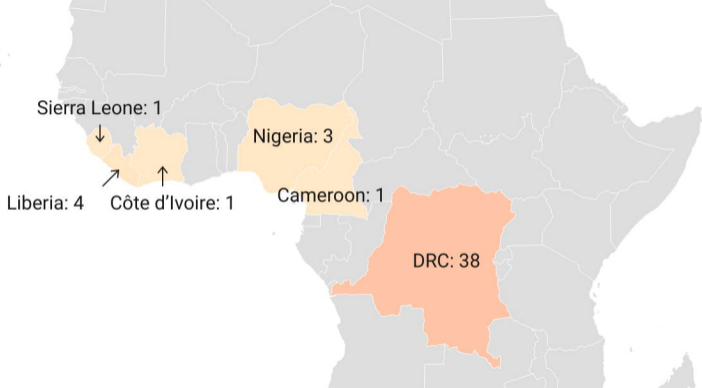
- 752 81. Nguyen PY, Ajisehiri WS, Costantino V, Chughtai AA, MacIntyre CR. Reemergence of human
753 monkeypox and declining population immunity in the context of urbanization, Nigeria, 2017-2020.
754 Emerg Infect Dis. 2021;27(4).
755 82. Petersen E, Kantele A, Koopmans M, Asogun D, Yinka-Ogunleye A, Ihekweazu C, et al. Human
756 monkeypox: Epidemiologic and clinical characteristics, diagnosis, and prevention. Infect Dis Clin North
757 Am. 2019;33(4):1027-1043.
758 83. Simpson K, Heymann D, Brown CS, Edmunds WJ, Elsgaard J, Fine P, et al. Human monkeypox -
759 After 40 years, an unintended consequence of smallpox eradication. Vaccine. 2020;38(33):5077-5081.
760 84. Reynolds MG, Carroll DS, Karem KL. Factors affecting the likelihood of monkeypox's emergence
761 and spread in the post-smallpox era. Curr Opin Virol. 2012;2(3):335-343.
762 85. Kugelman JR, Johnston SC, Mulembakani PM, Kisalu N, Lee MS, Koroleva G, et al. Genomic
763 variability of monkeypox virus among humans, Democratic Republic of the Congo. Emerg Infect Dis.
764 2014;20(2):232-239.
765 86. Centers for Disease Control and Prevention. History of Smallpox [Available from:
766 <https://www.cdc.gov/smallpox/history/history.html>.
767 87. Whitehouse ER, Bonwitt J, Hughes CM, Lushima RS, Likafi T, Nguete B, et al. Clinical and
768 epidemiologic findings from enhanced monkeypox surveillance in Tshuapa Province, Democratic
769 Republic of the Congo during 2011-2015. J Infect Dis. 2021;223(11):1870-1878.

770

771 **Supporting Information Captions**

- 772 S1 Table Number of monkeypox cases by decade by country
- 773 S2 Table Number of suspected cases versus confirmed, probable, and/or possible cases
- 774 S3 Table Secondary attack rate
- 775 S4 Table Age and sex of confirmed, probable, and/or possible and hospitalised cases from
776 Africa
- 777 S5 Table Case fatality rate in confirmed, probable, and/or possible monkeypox cases
- 778 S6 Table Transmission of monkeypox







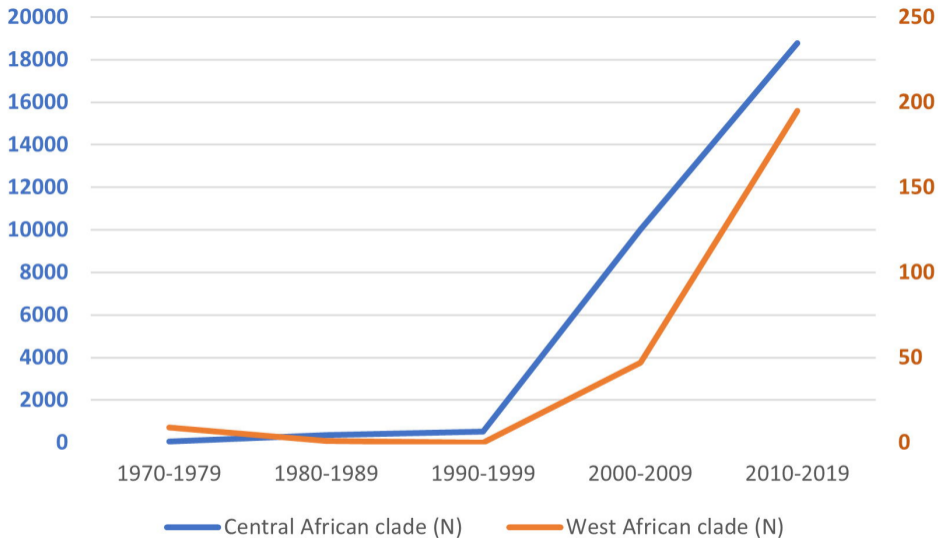


Gabon: 9

DRC: 511







Incidence (95% CI) per 100,000

