

**Title:** Deficits in hospital care among clinically vulnerable children aged 0 to 4 years during the COVID-19 pandemic

**Authors:** David Etoori<sup>1\*</sup>, Katie Harron<sup>2</sup>, Louise Mc Grath-Lone<sup>1</sup>, Maximiliane Verfuerden<sup>2</sup>, Ruth Gilbert<sup>2</sup>, Ruth Blackburn<sup>1</sup>.

**Affiliations:**

1. University College London Institute of Health Informatics, 222 Euston Road, London, NW1 2DA, UK.
2. University College London Great Ormond Street Institute of Child Health, 30 Guilford St, Holborn, London WC1N 1EH, UK.

**\*Corresponding author:** d.etoori@ucl.ac.uk

**Abstract**

**Objective** To quantify deficits in hospital care for clinically vulnerable children during the COVID-19 pandemic.

**Design** Birth cohort in Hospital Episode Statistics (HES).

**Setting** NHS hospitals in England.

**Study population** All children aged <5 years with a birth recorded in hospital administrative data (January 2010 to March 2021).

**Main exposure** Clinical vulnerability defined by a chronic health condition, preterm birth (<37 weeks gestation) or low birthweight (<2500g).

**Main outcomes** Deficits in care defined by predicted rates for 2020, estimated from 2015-2019, minus observed rates per 1000 child years during the pandemic (March 2020-2021).

**Results** Of 3,813,465 children, 17.7% (1 in 6) were clinically vulnerable (9.5% born preterm or low birthweight, 10.3% had a chronic condition). Deficits in hospital care during the pandemic were much higher for clinically vulnerable children than peers: respectively, outpatient attendances (314 versus 73 per 1000 child years), planned admissions (55 versus 10), and unplanned admissions (105 versus 79). Clinically vulnerable children accounted for 50.1% of the deficit in outpatient attendances, 55.0% in planned admissions, and 32.8% in unplanned hospital admissions. During the pandemic, weekly rates of planned care returned to pre-pandemic levels for infants with chronic conditions but not older children. Deficits in care differed by ethnic group and level of deprivation. Virtual outpatient attendances increased from 3.2% to 24.8% during the pandemic.

**Conclusion** 1 in 6 clinically vulnerable children accounted for one-third to one half of the deficit in hospital care during the pandemic.

**NOTE:** This preprint reports new research that has not been certified by peer review and should not be used to guide clinical practice.

## **Introduction:**

Rates of hospital contact among 0-4 year olds increased steadily in England over the past decade and are highest for infants.(1–3) Hospital utilisation patterns differ markedly by age and clinical vulnerability: children born preterm (<37 weeks of gestation), with low birth weight (<2500g) or a congenital anomaly, have substantially more admissions than other children.(4,5)

Hospital contacts declined substantially during the COVID lockdown.(6–9) This decline is likely to have impacted most on children with high rates of planned hospital care, such as those born too early or too small or with underlying health conditions.(1,2,10) Planned hospital care that was postponed or cancelled may result in delayed diagnoses or treatments, which could be detrimental to health or development.(11) Fewer unplanned hospital admissions might reflect fewer infections, injuries, or other health problems due to reduced exposure during pandemic restrictions, but could also reflect unmet need for unplanned care.

This study aimed to quantify deficits in planned and unplanned hospital care for clinically vulnerable children and their peers during the COVID-19 pandemic. We used national, longitudinal administrative data for England to measure rates of planned hospital contacts (admissions and outpatient attendances) and unplanned admissions among children with chronic health conditions or born too early or too small, and their peers. We quantified the deficit by comparing predicted and observed rates of hospital contacts during the first year of the pandemic. We examined whether rates of contact returned to pre-pandemic levels and described changes in the type of outpatient contact (e.g., face-to-face or virtual).

## **Methods:**

### Study population and data source:

Children were included in the cohort if aged 0-4 years and their birth was recorded in hospital administrative data in the English NHS (Hospital Episode Statistics – HES) between January 1, 2010, and March 31, 2021. Births recorded in HES represent 97% of all births in England.(12) Children were followed until their fifth birthday or March 31, 2021, whichever occurred first (Supplementary Figure 1). All contacts with NHS hospitals in England were routinely linked, including admitted patient care (APC) and outpatient attendances. Due to changes in linkage methods used by NHS Digital, accident and emergency (A&E) attendances could not be included.(13) We combined consecutive consultant episodes and hospital transfers to form admissions.(14)

### Outcome and exposure:

Our primary outcome was the deficit in hospital care, defined as the absolute difference between observed and predicted rates (per 1,000 child-years) of hospital contacts

(outpatient attendances, planned and unplanned hospital admissions) during the pandemic (March 23, 2020, to March 22, 2021). We also described trends in weekly rates of hospital contacts by year of age (from January 1, 2020 to March 31, 2021, and averaged for 2015-2019), and uptake (attended, missed, cancelled, postponed) and mode (in person, virtually) of outpatient contacts.

Clinical vulnerability was defined by a chronic condition recorded in HES up to age 4, or preterm birth (<37 weeks of gestation) or low birth weight (<2500g) recorded in birth or delivery records, using previously reported methods.(12,15–17) Children with missing gestation and birth weight data who had no chronic conditions were categorised as having no clinical vulnerability.

We analysed the following risk factors associated with frequency of hospital contacts: age (0 to 11 months, 1 to 4 years),(3) quintile of deprivation derived from the national distribution of the Index of Multiple Deprivation (IMD) 2004 (an area measure for ~650 households),(18,19) and ethnic group recorded in HES (grouped as White, Black, Asian, or Other, including mixed and Chinese).

#### Statistical analyses:

We calculated observed rates of hospital contacts per 1,000 child-years in the pre-pandemic period (2015-2019), stratifying by risk factor (clinical vulnerability, age group, area quintile of deprivation, and ethnic group).

We calculated child-years at risk by averaging the eligible population of births recorded in HES at the beginning and end of a year, assuming no emigration and ignoring deaths. We used a Poisson model, which included a linear effect of time and log of the mid-year population as an offset, to model rates from January 1, 2015, to December 31, 2019 stratifying by risk factors. Data from January 1 to March 22, 2020, was excluded from the pre-pandemic period as we observed reductions in hospital contact rates before the first lockdown. To calculate the deficit in hospital contacts, we predicted rates for the pandemic period, assuming that the pandemic had not occurred and that previous trends would have continued. The deficit was estimated as the difference between predicted and observed rates. We also calculated deficits within the first national lockdown (March 23 to June 23 2020), easing of restrictions (June 24 to November 4 2020), second national lockdown (November 5 – December 31 2020), and third national lockdown (January 1 – March 22 2021).(20)

To understand seasonality and visualise the decline and recovery in hospital contacts during the pandemic, we calculated weekly rates between January 1, 2015, and March 31, 2021 using dynamic denominator study populations. Since we expected the largest differences to be seen when comparing children with and without chronic conditions, we stratified by this risk factor as recorded in any HES admission between birth and the relevant week. Weekly rates of hospital contact were calculated by dividing the total number of weekly admissions

or attendances by the weekly dynamic denominator population of children within each stratification level (i.e., a child born in week 1 of 2015 would move into the 1-year-old group in week 1 of 2016 and age out of the cohort in week 1 of 2019). We then visually compared weekly plots of rates in 2020 and 2021 with the overall average rates for 2015-2019 for the same week. We also modelled weekly rates between January 1, 2015, and December 31, 2019, using a Poisson model which included a linear effect of time, calendar month to account for seasonality, log of the weekly denominator population as an offset, and second order lagged residuals. A similar approach was then used to estimate weekly deficits during the pandemic. All analyses were performed in Stata 16.(21)

## **Results:**

### Population characteristics:

Of the 3,813,465 children aged 0-4 years, 394,384 (10.3%) had a record indicating a chronic condition (including congenital anomalies); 363,950 (9.5%) were born preterm or low birthweight, and 83,283 (2.2%) had both vulnerabilities. Overall, 675,051 (17.7%) had one or more of these clinical vulnerabilities (Table 1).

### Hospital contacts pre-pandemic:

Hospital contacts were much higher among infants than children aged 1-4 years: 60.1% of infants and 8.2% of 1-4-year-olds had  $\geq 1$  outpatient attendance each year (Supplementary Figure 2, Supplementary Table 1). Overall, 31.2% of clinically vulnerable children had  $\geq 1$  outpatient attendance compared with 14.1% of those with no known vulnerability ( $p < 0.001$ ). A similar pattern was seen for planned and unplanned hospital admissions. Children with chronic conditions had the highest rates of planned and unplanned admissions across all strata (Supplementary Figures 3-4). In contrast, children born preterm or low birth weight but with no chronic condition had similar rates of admissions to their peers born at term or weighing  $\geq 2500$ g (Supplementary Figure 2).

### Hospital contacts during the pandemic:

There were stark reductions in rates of all types of hospital care during the pandemic (Table 2, Supplementary tables 2-4). Differences between predicted and observed rates of hospital contacts were much larger for children with a chronic condition than those without, and particularly high for children with a chronic condition who were also born preterm or with a low birth weight (Table 2). The 17.7% of children who were categorised as clinically vulnerable accounted for 50.1% of the deficit in outpatient attendances, 55.0% of the deficit in planned hospital admissions, and 32.8% of the deficit in unplanned hospital admissions (Table 2).

Deficits were higher for infants than 1-4-year-olds for outpatient attendances and unplanned admissions but not for planned admissions (Figure 1). We found small but

statistically significant differences in deficits of planned and unplanned admissions across ethnic groups and in all hospital contacts among children in the most (versus least) deprived quintile (Supplementary tables 3-4). The largest deficits in care was among children with a chronic condition (Supplementary Figures 5-6). Overall, the largest deficits were seen in the first lockdown for outpatient attendances and planned admissions, but for unplanned admissions, the largest deficits occurred in the second lockdown period (Table 3; Supplementary tables 5-7).

#### Trends in hospital contacts:

Outpatient attendances declined sharply before and during the first national lockdown (Figure 2), among children of all ages with a chronic condition, with less perceptible changes among those without a chronic condition. Outpatient attendances rapidly returned to pre-pandemic rates for infants, but not for older children which remained below 2015-19 averages in the third lockdown. Planned admissions followed a similar pattern, with a return to pre-pandemic rates only for infants (Figure 2).

Declines in rates of unplanned admissions during the first lockdown were much greater for children with a chronic condition than those without and remained below pre-pandemic levels for both groups at all ages (Figure 2). In 2020, the autumn-winter peak in unplanned admissions was diminished relative to previous years; however, following the reopening of primary schools at the end of the third lockdown on March 8, 2021, there was an increase in unplanned admission rates for all children, particularly those with a chronic condition (Figure 2, Supplementary Figure 7). Trends did not differ consistently according to deprivation level (Supplementary Figures 8-9) or by ethnic group (Supplementary Figures 10-12).

For all age groups, a spike in cancellations and postponement of outpatient appointments preceded the first lockdown by three weeks (Supplementary Figure 13). There was an increase in tele/virtual outpatient attendances during the pandemic and face-to-face visits did not return to pre-pandemic levels in any age group (Supplementary Table 8 and Figure 14).

#### **Discussion:**

This population-based cohort study of all children aged <5 in England found large and disproportionate deficits in planned and unplanned hospital contacts during the COVID-19 pandemic for clinically vulnerable groups and those living in deprived areas. The one in six clinically vulnerable children accounted for over half the deficit in outpatient attendances and planned admissions, and one-third of the deficit in unplanned admissions. We saw some evidence of recovery in the deficit in planned care during the pandemic among infants, but not among older children.

This study has several strengths. First, we used a birth cohort of all children born in an NHS hospital in England (97% of all births). Our rates did not account for deaths in the

denominator (0.5%), non-NHS health care, or emigration, but these events are rare. Second, HES captures gestational age and birthweight and we used a clinically developed coding system to define chronic conditions from diagnostic codes recorded in admissions.(15) Third, the large study population made it possible to calculate weekly rates. Fourth, we used data preceding the pandemic to March 2021 to investigate variation across the first year of the pandemic.

Limitations include under-ascertainment of chronic conditions for children who could not be admitted to hospital due to the pandemic. These children may have been managed in primary care, or as outpatients, which does not reliably code chronic conditions. Our analyses may underestimate vulnerability for the 10% of children without a record of gestational age or birthweight as we assumed they had non-vulnerable status. Multiple imputation of missing data was not feasible given the study size. Second, we could not quantify the deficit in A&E attendances, as longitudinal linkage is not currently available. However, studies investigating A&E attendances have reported similar deficits to those found in our study.(22,23) Our modelling approach required several assumptions (including continued trends in hospital contacts), and the differences we report are likely conservative estimates of impact.

Deficits in hospital care for children during the pandemic have been reported in Europe,(7,24–31) Asia,(32) North,(33–36) and South America.(37) Most studies investigated A&E attendances or unplanned admissions.(23–37) Other studies report a reduction in asthma-related paediatric emergency department attendances,(27) and reduced likelihood of admission, assessment and surgery for children with epilepsy.(38) Furthermore, significant reductions in infection-related hospitalisations have been observed,(28,32,34,39) particularly for children under 5 years.(39) Two studies conducted national level analyses.(28,30) We believe our study is the first to report on deficits in planned care (admissions and outpatient), on disproportionate deficits in hospital care for children with health risk-factors at a population-level, and for a full year of the pandemic. Previous research in adult populations has reported on the disproportionate burden of COVID-19 infection, hospitalisation, and death in minority ethnic groups.(40,41) Our study did not examine COVID-related contacts because children hospitalisation is rare as typically experience mild asymptomatic disease.(42,43) However, we identified small differences in deficits of hospital care for children in the Asian ethnic group, and for children in the most deprived quintile, indicating evidence of structural inequalities in healthcare access.

Potential mechanisms underpinning deficits in planned care likely represent restrictions to access, supported by a rise in postponements of outpatient care. Our findings show these restrictions were mitigated in infants, who have a high frequency of hospital care and for whom interventions are likely to be more time-critical than in older children.(3) However, deficits remained large in older children and may reflect unmet need or postponed care that could have longer-term health and care consequences.(11) Furthermore, children without

access to the internet at home will have been disproportionately impacted by the move to virtual appointments.

Deficits in unplanned care may be driven by opposing factors. Previous studies reported reductions in unplanned admissions due to decreases in infection-related hospitalisations, due to reduced social exposure and increased hygiene, with little change in admissions for non-infectious causes such as appendicitis.(25,28,29,32,39) Others have reported reductions in injury.(44) The spike in unplanned admissions after schools reopened in autumn 2020 and in March 2021 when the third lockdown ended likely reflects increased socialisation. Other positive effects could include reduced exposure to triggers for respiratory disease (e.g., air pollution),(45) improved hygiene due to ubiquitous handwashing messaging, and improved medication adherence through increased parental supervision. Negative implications could include reduced extrinsic interventions through education, health, and social care professionals,(7,46) or delaying or avoiding medical care due to restricted access or fears of potential hospital-acquired COVID-19 infection.(36,47–49) Additionally, these deficits could represent a missed opportunity to catch problems early which could also have consequences in the future.(11,50)

This analysis was the first step in quantifying the burden of deferred or foregone hospital care during the pandemic and the potential consequences for young children. Studies using routine administrative data report only the most acute cases are presenting at hospitals,(35,36) and that some of the deficits reflect late or missed diagnoses.(11,50) More research is needed to untangle these different mechanisms. Research is also needed to understand deficits in planned care, the types of care, procedures, or treatments affected and the short- and long-term implications for children with specific conditions. Our findings indicate a need for targeted ‘catch-up’ funding and resources for child health, particularly for vulnerable children who were affected disproportionately.(51)

## References:

1. Saxena S, Bottle A, Gilbert R, Sharland M. Increasing short-stay unplanned hospital admissions among children in England; time trends analysis '97-'06. *PloS One*. 2009 Oct 15;4(10):e7484.
2. Wolfe I, Thompson M, Gill P, Tamburlini G, Blair M, van den Bruel A, et al. Health services for children in western Europe. *Lancet Lond Engl*. 2013 Apr 6;381(9873):1224–34.
3. Ruzangi J, Blair M, Cecil E, Greenfield G, Bottle A, Hargreaves DS, et al. Trends in healthcare use in children aged less than 15 years: a population-based cohort study in England from 2007 to 2017. *BMJ Open*. 2020 May 5;10(5):e033761.

4. Wijlaars LP, Hardelid P, Woodman J, Allister J, Cheung R, Gilbert R. Contribution of recurrent admissions in children and young people to emergency hospital admissions: retrospective cohort analysis of hospital episode statistics. *Arch Dis Child*. 2015 Sep;100(9):845–9.
5. Harron K, Gilbert R, Cromwell D, Oddie S, Guttman A, Meulen J van der. International comparison of emergency hospital use for infants: data linkage cohort study in Canada and England. *BMJ Qual Saf*. 2018 Jan 1;27(1):31–9.
6. World Health Organisation. COVID-19 significantly impacts health services for noncommunicable diseases [Internet]. [cited 2021 Mar 18]. Available from: <https://www.who.int/news/item/01-06-2020-covid-19-significantly-impacts-health-services-for-noncommunicable-diseases>
7. Isba R, Edge R, Jenner R, Broughton E, Francis N, Butler J. Where have all the children gone? Decreases in paediatric emergency department attendances at the start of the COVID-19 pandemic of 2020. *Arch Dis Child*. 2020 Jul 1;105(7):704–704.
8. Public Health England. National COVID-19 surveillance reports [Internet]. [cited 2021 Apr 13]. Available from: <https://www.gov.uk/government/publications/national-covid-19-surveillance-reports>
9. Bottle A, Aylin P, Warner M, Propper C, Stoye G, Burn S. What happened to English NHS hospital activity during the COVID-19 pandemic? [Internet]. 2021 May [cited 2021 Nov 30]. Available from: <https://ifs.org.uk/publications/15432>
10. Cecil E, Bottle A, Sharland M, Saxena S. Impact of UK Primary Care Policy Reforms on Short-Stay Unplanned Hospital Admissions for Children With Primary Care-Sensitive Conditions. *Ann Fam Med*. 2015 Jun;13(3):214–20.
11. Lynn RM, Avis JL, Lenton S, Amin-Chowdhury Z, Ladhani SN. Delayed access to care and late presentations in children during the COVID-19 pandemic: a snapshot survey of 4075 paediatricians in the UK and Ireland. *Arch Dis Child*. 2021 Feb 1;106(2):e8–e8.
12. Harron K, Gilbert R, Cromwell D, Meulen J van der. Linking Data for Mothers and Babies in De-Identified Electronic Health Data. *PLOS ONE*. 2016 Oct 20;11(10):e0164667.
13. Hospital Episode Statistics data changes in 2021 [Internet]. NHS Digital. [cited 2021 Nov 30]. Available from: <https://digital.nhs.uk/data-and-information/data-tools-and-services/data-services/hospital-episode-statistics/hospital-episode-statistics-data-changes-in-2021>



14. Herbert A, Wijlaars L, Zylbersztejn A, Cromwell D, Hardelid P. Data Resource Profile: Hospital Episode Statistics Admitted Patient Care (HES APC). *Int J Epidemiol*. 2017 Aug 1;46(4):1093–1093i.
15. Hardelid P, Dattani N, Gilbert R. Estimating the prevalence of chronic conditions in children who die in England, Scotland and Wales: a data linkage cohort study. *BMJ Open*. 2014 Aug 1;4(8):e005331.
16. Hardelid P, Dattani N, Davey J, Pribramska I, Gilbert R. Overview of child deaths in the four UK countries [Internet]. 2013 [cited 2021 Apr 13]. Available from: <https://www.hqip.org.uk/resource/overview-of-child-deaths-in-the-four-uk-countries/>
17. Feudtner C, Christakis DA, Connell FA. Pediatric deaths attributable to complex chronic conditions: a population-based study of Washington State, 1980-1997. *Pediatrics*. 2000 Jul;106(1 Pt 2):205–9.
18. Office of the Deputy Prime Minister, Neighbourhood Renewal Unit. The English indices of deprivation 2004. [Internet]. London: Office of the Deputy Prime Minister; 2004. Available from: <https://www.brent.gov.uk/media/323946/SD%2062b%20Indices%20of%20multiple%20deprivation%202004.pdf>
19. Ward J, Hargreaves D, Rogers M, Firth A, Turner S, Viner R, et al. Recent and forecast post-COVID trends in hospital activity in England amongst 0 to 24 year olds: analyses using routine hospital administrative data [Internet]. 2021 Feb [cited 2021 Nov 30] p. 2021.02.11.21251584. Available from: <https://www.medrxiv.org/content/10.1101/2021.02.11.21251584v1>
20. Prime Minister’s statement on coronavirus (COVID-19): 23 March 2020 [Internet]. GOV.UK. [cited 2021 Apr 20]. Available from: <https://www.gov.uk/government/speeches/pm-address-to-the-nation-on-coronavirus-23-march-2020>
21. StataCorp. Stata Statistical Software. College Station, TX: StataCorp LLC; 2017.
22. Rose KE, Bressan S, Honeyford K, Titomanlio L, Nijman R, Group ESGES. Understanding responses of paediatric emergency departments to the first wave of the Covid-19 pandemic – a pan-European perspective. *Arch Dis Child*. 2021 Oct 1;106(Suppl 1):A161–2.
23. Nijman R, Honeyford K, Bressan S, Titomanlio L, Study S group E. Epidemiology, severity and outcomes of children presenting to emergency departments across Europe during the SARS-COV-2 pandemic: an observational cohort study. *Arch Dis Child*. 2021 Oct 1;106(Suppl 1):A469–70.

24. Scaramuzza A, Tagliaferri F, Bonetti L, Soliani M, Morotti F, Bellone S, et al. Changing admission patterns in paediatric emergency departments during the COVID-19 pandemic. *Arch Dis Child*. 2020 Jul 1;105(7):704–6.
25. Clavenna A, Nardelli S, Sala D, Fontana M, Biondi A, Bonati M. Impact of COVID-19 on the Pattern of Access to a Pediatric Emergency Department in the Lombardy Region, Italy. *Pediatr Emerg Care*. 2020 Oct;36(10):e597.
26. Matera L, Nenna R, Ardeni Morini F, Banderali G, Calvani M, Calvi M, et al. Effects of Relaxed Lockdown on Pediatric ER Visits during SARS-CoV-2 Pandemic in Italy. *Int J Environ Res Public Health*. 2021 Sep 10;18(18):9547.
27. Chavasse R, Almario A, Christopher A, Kappos A, Shankar A. The Indirect Impact of COVID-19 on Children With Asthma. *Arch Bronconeumol*. 2020 Nov;56(11):768–9.
28. Angoulvant F, Ouldali N, Yang DD, Filser M, Gajdos V, Rybak A, et al. Coronavirus Disease 2019 Pandemic: Impact Caused by School Closure and National Lockdown on Pediatric Visits and Admissions for Viral and Nonviral Infections—a Time Series Analysis. *Clin Infect Dis*. 2021 Jan 15;72(2):319–22.
29. Kruizinga MD, Peeters D, van Veen M, van Houten M, Wieringa J, Noordzij JG, et al. The impact of lockdown on pediatric ED visits and hospital admissions during the COVID19 pandemic: a multicenter analysis and review of the literature. *Eur J Pediatr*. 2021 Jul 1;180(7):2271–9.
30. Williams TC, MacRae C, Swann OV, Haseeb H, Cunningham S, Davies P, et al. Indirect effects of the COVID-19 pandemic on paediatric healthcare use and severe disease: a retrospective national cohort study. *Arch Dis Child*. 2021 Sep 1;106(9):911–7.
31. Dann L, Fitzsimons J, Gorman KM, Hourihane J, Okafor I. Disappearing act: COVID-19 and paediatric emergency department attendances. *Arch Dis Child*. 2020 Aug 1;105(8):810–1.
32. Kishimoto K, Bun S, Shin J, Takada D, Morishita T, Kunisawa S, et al. Early impact of school closure and social distancing for COVID-19 on the number of inpatients with childhood non-COVID-19 acute infections in Japan. *Eur J Pediatr*. 2021 Sep 1;180(9):2871–8.
33. Hartnett KP. Impact of the COVID-19 Pandemic on Emergency Department Visits — United States, January 1, 2019–May 30, 2020. *MMWR Morb Mortal Wkly Rep* [Internet]. 2020 [cited 2021 Dec 6];69. Available from: <https://www.cdc.gov/mmwr/volumes/69/wr/mm6923e1.htm>

34. Nolen LD, Seeman S, Bruden D, Klejka J, Desnoyers C, Tiesinga J, et al. Impact of Social Distancing and Travel Restrictions on Non–Coronavirus Disease 2019 (Non–COVID-19) Respiratory Hospital Admissions in Young Children in Rural Alaska. *Clin Infect Dis*. 2021 Jun 15;72(12):2196–8.
35. Isba R, Edge R, Auerbach M, Cicero MX, Jenner R, Setzer E, et al. COVID-19: Transatlantic Declines in Pediatric Emergency Admissions. *Pediatr Emerg Care*. 2020 Nov 1;36(11):551–3.
36. Goldman RD, Grafstein E, Barclay N, Irvine MA, Portales-Casamar E. Paediatric patients seen in 18 emergency departments during the COVID-19 pandemic. *Emerg Med J*. 2020 Dec 1;37(12):773–7.
37. Ferrero F, Ossorio MF, Torres FA, Debaisi G. Impact of the COVID-19 pandemic in the paediatric emergency department attendances in Argentina. *Arch Dis Child*. 2021 Feb 1;106(2):e5–e5.
38. Wirrell EC, Grinspan ZM, Knupp KG, Jiang Y, Hammeed B, Mytinger JR, et al. Care Delivery for Children With Epilepsy During the COVID-19 Pandemic: An International Survey of Clinicians. *J Child Neurol*. 2020 Nov;35(13):924–33.
39. Todd IMF, Miller JE, Rowe SL, Burgner DP, Sullivan SG. Changes in infection-related hospitalizations in children following pandemic restrictions: an interrupted time-series analysis of total population data. *Int J Epidemiol*. 2021 Nov 10;50(5):1435–43.
40. Mathur R, Rentsch CT, Morton CE, Eggo RM, Bhaskaran K, Tomlinson L, et al. Ethnic disparities in COVID-19: increased risk of infection or severe disease? – Authors’ reply. *The Lancet*. 2021 Jul 31;398(10298):390.
41. Williamson EJ, Walker AJ, Bhaskaran K, Bacon S, Bates C, Morton CE, et al. Factors associated with COVID-19-related death using OpenSAFELY. *Nature*. 2020 Aug;584(7821):430–6.
42. Ladhani SN, Amin-Chowdhury Z, Davies HG, Aiano F, Hayden I, Lacy J, et al. COVID-19 in children: analysis of the first pandemic peak in England. *Arch Dis Child*. 2020 Dec;105(12):1180–5.
43. Mehta NS, Mytton OT, Mullins EWS, Fowler TA, Falconer CL, Murphy OB, et al. SARS-CoV-2 (COVID-19): What Do We Know About Children? A Systematic Review. *Clin Infect Dis Off Publ Infect Dis Soc Am*. 2020 Dec 3;71(9):2469–79.
44. Nuñez JH, Sallent A, Lakhani K, Guerra-Farfan E, Vidal N, Ekhtiari S, et al. Impact of the COVID-19 Pandemic on an Emergency Traumatology Service: Experience at a Tertiary Trauma Centre in Spain. *Injury*. 2020 Jul 1;51(7):1414–8.

45. Krivec U, Seliger AK, Tursic J. COVID-19 lockdown dropped the rate of paediatric asthma admissions. *Arch Dis Child*. 2020 Aug 1;105(8):809–10.
46. Kubicek K, Liu D, Beaudin C, Supan J, Weiss G, Lu Y, et al. A Profile of Nonurgent Emergency Department Use in an Urban Pediatric Hospital. *Pediatr Emerg Care*. 2012 Oct;28(10):977–84.
47. Czeisler MÉ, Marynak K, Clarke KEN, Salah Z, Shakya I, Thierry JM, et al. Delay or Avoidance of Medical Care Because of COVID-19–Related Concerns — United States, June 2020. *Morb Mortal Wkly Rep*. 2020 Sep 11;69(36):1250–7.
48. McDonnell T, Nicholson E, Conlon C, Barrett M, Cummins F, Hensey C, et al. Assessing the Impact of COVID-19 Public Health Stages on Paediatric Emergency Attendance. *Int J Environ Res Public Health*. 2020 Jan;17(18):6719.
49. Health Foundation. Public perceptions of health and social care in light of COVID-19 (May 2020). [Internet]. 2020. Available from: <https://www.health.org.uk/publications/reports/public-perceptions-of-health-and-social-care-in-light-of-covid-19-may-2020>
50. Dayal D, Gupta S, Raithatha D, Jayashree M. Missing during COVID-19 lockdown: Children with onset of type 1 diabetes. *Acta Paediatr*. 2020;109(10):2144–6.
51. NHS England » Core20PLUS5 – An approach to reducing health inequalities [Internet]. [cited 2021 Nov 30]. Available from: <https://www.england.nhs.uk/about/equality/equality-hub/core20plus5/>

**Acknowledgements:** The data for this project is part of the ECHILD project. The ECHILD project is in partnership with NHS Digital and the Department for Education (DfE) and we thank the following individuals for their valuable contributions to the project: Garry Coleman, Richard Caulton, Joanna Geisler, Catherine Day (NHS Digital), Chris Douglass and Gary Connell (DfE).

We thank all the children, young people, parents and carers who contributed to the ECHILD project, as well as Dr Erin Walker (UCL Partners) who led this involvement. We would particularly like to thank members of the National Children’ Bureau Young Research Advisors, National Children’ Bureau Family Research Advisory Groups, NIHR Great Ormond Street Hospital (GOSH) Biomedical Research Centre (BRC) Parent and Carer Advisory Group, GOSH Young People’s Forum and GOSH Young Persons Advisory Group for their input to this project. We also gratefully acknowledge all children and families whose de-identified data are used in this analysis.

We would like to thank Nicolas Libuy, Pia Hardelid, Chloe Parkin and Matthew Lilliman for their contributions to this project.

**Ethics approval:** Approvals for the use of HES data were obtained as part of the standard Hospital Episode Statistics approval process and ethical approval was obtained from London—South East Research Ethics Committee (reference 16/LO/0012). HES records were made available by NHS Digital.

**Competing interests:** The authors declare that the research was conducted in the absence of any commercial or financial relationships that could be construed as a potential conflict of interest.

**Authors' contributions:** The study was conceived by RG, KH, and RB. DE conducted all the analyses with input from KH and RG. DE wrote the manuscript with input from all the authors. All the authors approved the final manuscript.

**Funding:** This work is supported by ADR UK (Administrative Data Research UK), an Economic and Social Research Council (part of UK Research and Innovation) programme [grant number ES/V000977/1]. This research was also supported in part by the NIHR Great Ormond Street Hospital Biomedical Research Centre and Health Data Research UK [grant number LOND1], funded by the UK Medical Research Council and eight other funders. This research benefits from and contributes to the NIHR Children and Families Policy Research Unit, but was not commissioned by the National Institute for Health Research (NIHR) Policy Research Programme. R.G. and R.B. are in part supported by the National Institute for Health Research (NIHR) Children and Families Policy Research Unit. The views expressed are those of the authors and not necessarily those of the NIHR or the Department of Health and Social Care. R.B. is supported by a UKRI Innovation Fellowship funded by the Medical Research Council [grant number MR/S003797/1]. K.H. is funded by NIHR [grant number 17/99/19].

**Data availability:** The data used in this analysis is expected to be available to accredited researchers in 2022 (as part of the ECHILD Database) by applying to the data providers (DfE and NHS Digital).

**Table 1: Demographic characteristics of children born between January 1, 2015, and March 31, 2021, by vulnerability status**

		None (N=3,138,414; 82.3%)		LBW/Preterm only (N=280,667; 7.4%)		CC only (N=311,101; 8.2%)		Both (N=83,283; 2.2%)		Total (N=3,813,465)	
		n	%	n	%	n	%	n	%	n	%
<b>Sex</b>	Male	1,590,308	50.7	134,871	48.1	183,964	59.1	46,304	55.6	1,955,447	51.3
	Female	1,547,082	49.3	145,481	51.8	127,006	40.8	36,860	44.3	1,856,429	48.7
	Missing	1,024	0.03	315	0.1	131	0.04	119	0.1	1,589	0.04
<b>Age group</b>	Infants	480,832	15.3	36445	13.0	27641	8.9	8317	10.0	553,235	14.5
	1-4-year-olds	2,657,582	84.7	244,222	87.0	283,460	91.1	74,966	90.0	3,260,230	85.5
<b>Ethnic group</b>	White	2,185,934	69.7	184,525	65.8	228,023	73.3	58,366	70.1	2,656,848	69.7
	Black/Black British	140,991	4.5	15,477	5.5	14,150	4.6	4,681	5.6	175,299	4.6
	Asian/Asian British	332,009	10.6	41,516	14.8	33,610	10.8	10,857	13.0	417,992	11.0
	Any other ethnic groups	273,658	8.7	24,085	8.6	25,135	8.1	6,633	8.0	329,511	8.6
	Missing	205,822	6.6	15,064	5.4	10,183	3.3	2,746	3.3	233,815	6.1
<b>Deprivation quintile</b>	Q1 (most deprived)	739,549	23.6	83,204	29.7	89,425	28.7	27,254	32.7	939,432	24.6
	Q2	612,665	19.5	60,337	21.5	67,853	21.8	18,629	22.4	759,484	19.9
	Q3	524,863	16.7	45,794	16.3	55,924	18.0	14,117	17.0	640,698	16.8
	Q4	461,118	14.7	37,446	13.3	47,670	15.3	11,287	13.6	557,521	14.6
	Q5 (least deprived)	436,147	13.9	34,530	12.3	43,052	13.8	10,119	12.2	523,848	13.7
	Missing	364,072	11.6	19,356	6.9	7,177	2.3	1,877	2.3	392,482	10.3
<b>Year of birth</b>	2015	512,624	16.3	46,590	16.6	68,814	22.1	16,021	19.2	644,049	16.9
	2016	515,510	16.4	49,020	17.5	63,505	20.4	16,042	19.3	644,077	16.9
	2017	511,838	16.3	49,358	17.6	55,396	17.8	15,096	18.1	631,688	16.6
	2018	500,133	15.9	47,406	16.9	47,628	15.3	13,730	16.5	608,897	16.0
	2019	497,682	15.9	41,713	14.9	40,107	12.9	11,646	14.0	591,148	15.5
	2020	487,365	15.5	38,128	13.6	30,598	9.8	9,341	11.2	565,432	14.8
	2021	113,262	3.6	8,452	3.0	5,053	1.6	1,407	1.7	128,174	3.4

**LBW** – Low birthweight; **CC** – Chronic conditions

**Table 2: Difference between predicted and observed rates of hospital contact during the pandemic (March 2020-2021) among children aged 0 to 4 years, by clinical vulnerability group.**

Outpatient attendances	Percentage of children seen			Number of hospital contacts				Rates per 1000 child-years			
	n	N	%	Predicted	Observed	Difference	% change	Predicted	Observed	Difference (95% CI)	% change
Total	370,623	2,765,941	13.4	1,500,674	1,173,091	-327,583	-21.8	543	424	<b>-118</b> (-115, -122)	-21.8
No known vulnerability	232,976	2,243,088	10.4	635,226	471,743	-163,483	-25.7	283	210	<b>-73</b> (-71, -74)	-25.7
Any vulnerability	137,647	522,853	26.3	865,448	701,348	-164,100	-19.0	1655	1341	<b>-314*</b> (-302, -326)	-19.0
• LBW/Preterm only	29,622	226,439	13.1	94,660	76,039	-18,621	-19.7	418	336	<b>-82*</b> (-77, -88)	-19.7
• CC only	86,825	231,671	37.5	586,026	475,226	-110,800	-18.9	2530	2051	<b>-478*</b> (-465, -492)	-18.9
• Both	21,200	64,743	32.7	184,762	150,083	-34,679	-18.8	2854	2318	<b>-536*</b> (-508, -563)	-18.8
Any CC <sup>α</sup>	107,762	296,414	36.4	771,219	625,309	-145,910	-18.9	2602	2110	<b>-492*</b> (-480, -505)	-18.9
Planned admissions											
Total	52,280	2,765,941	1.9	144,980	92,618	-52,362	-36.1	52	33	<b>-19</b> (-18, -20)	-36.1
No known vulnerability	15,287	2,243,088	0.7	40,568	17,022	-23,546	-58.0	18	8	<b>-10</b> (-10, -11)	-58.0
Any vulnerability	36,993	522,853	7.1	104,412	75,596	-28,816	-27.6	200	145	<b>-55*</b> (-51, -59)	-27.6
• LBW/Preterm only	1,389	226,439	0.6	3,675	1,522	-2,153	-58.6	16	7	<b>-10</b> (-8, -11)	-58.6
• CC only	31,038	231,671	13.4	85,367	65,506	-19,861	-23.3	368	283	<b>-86*</b> (-81, -91)	-23.3
• Both	4,566	64,743	7.1	15,370	8,568	-6,802	-44.3	237	132	<b>-105*</b> (-97, -113)	-44.3
Any CC	35,603	296,414	12.0	100,929	74,074	-26,855	-26.6	341	250	<b>-91*</b> (-86, -95)	-26.6
Unplanned admissions											
Total	131,134	2,765,941	4.7	442,174	179,366	-262,808	-59.4	160	65	<b>-95</b> (-93, -97)	-59.4
No known vulnerability	66,830	2,243,088	3.0	254,263	77,713	-176,550	-69.4	113	35	<b>-79</b> (-78, -80)	-69.4
Any vulnerability	64,304	522,853	12.3	187,911	101,653	-86,258	-45.9	359	194	<b>-165*</b> (-159, -171)	-45.9
• LBW/Preterm only	6,046	226,439	2.7	25,520	7,228	-18,292	-71.7	113	32	<b>-81</b> (-78, -84)	-71.7
• CC only	52,285	231,671	22.6	134,055	84,126	-49,929	-37.2	579	363	<b>-216*</b> (-209, -222)	-37.2
• Both	5,973	64,743	9.2	28,336	10,299	-18,037	-63.7	438	159	<b>-279*</b> (-268, -290)	-63.7
Any CC	58,248	296,414	19.7	162,648	94,425	-68,223	-41.9	549	319	<b>-230*</b> (-224, -236)	-41.9

**LBW** – Low birthweight; **CC** – Chronic conditions. <sup>α</sup> Any CC combines CC only and both. \* Significantly different from children with no known vulnerability (p<0.05).

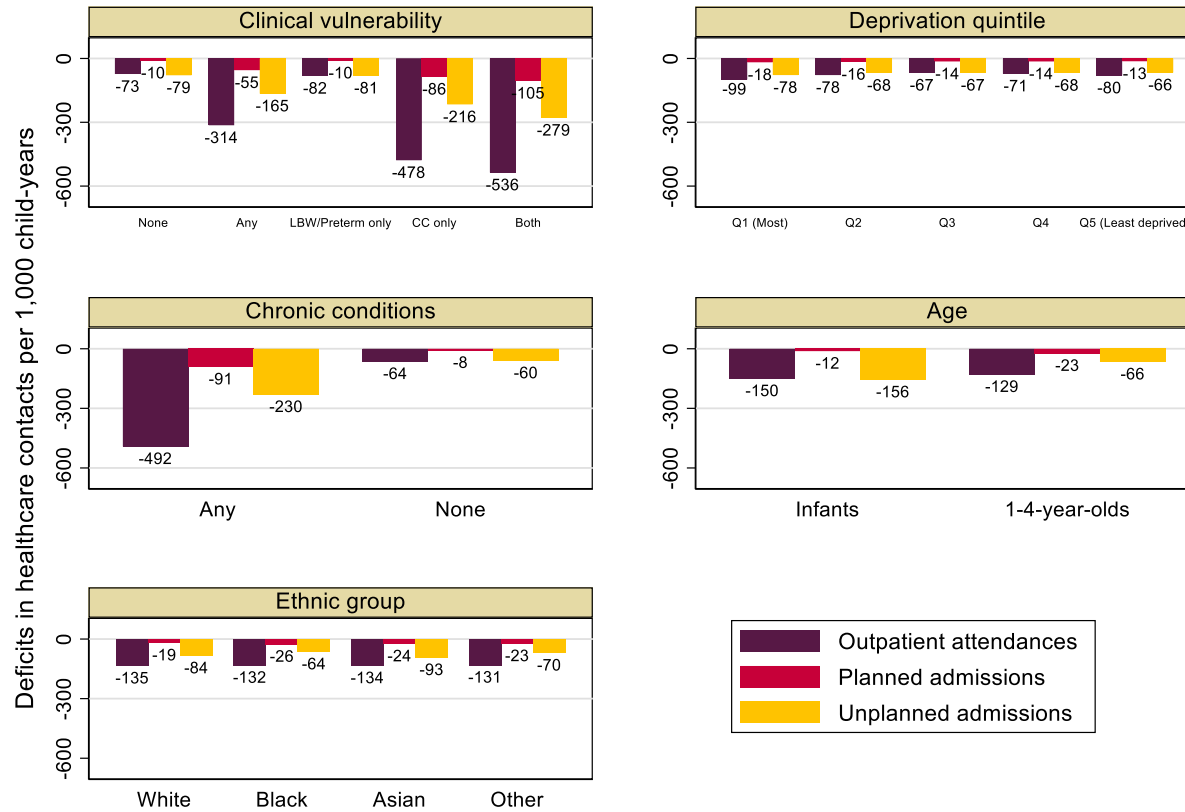
**Table 3: Difference in predicted and observed rates of hospital contact per 1,000 child-years among children aged 0 to 4 years during the pandemic (March 2020-2021), by period and clinical vulnerability.**

	1 <sup>st</sup> lockdown March 23 to June 23, 2020		Easing of restrictions June 24 to Nov 4, 2020		2 <sup>nd</sup> lockdown Nov 5 to Dec 31, 2020		3 <sup>rd</sup> lockdown Jan 1 to March 22, 2021	
	Deficit (95% CI)	% change	Deficit (95% CI)	% change	Deficit (95% CI)	% change	Deficit (95% CI)	% change
<b>Outpatient attendances</b>								
<b>Total</b>	<b>-167</b> (-163, -170)	-30.7	<b>-88</b> (-86, -91)	-16.3	<b>-96</b> (-91, -100)	-17.9	<b>-128</b> (-123, -132)	-23.5
No known vulnerability	<b>-106</b> (-104, -107)	-37.2	<b>-55</b> (-54, -56)	-19.5	<b>-56</b> (-55, -58)	-20.6	<b>-75</b> (-73, -77)	-26.2
Any vulnerability	<b>-428*</b> (-417, -439)	-25.9	<b>-230*</b> (-221, -240)	-13.9	<b>-264*</b> (-249, -278)	-16.0	<b>-352*</b> (-337, -367)	-21.4
• LBW/Preterm only	<b>-121*</b> (-116, -127)	-28.7	<b>-57</b> (-53, -61)	-13.8	<b>-73*</b> (-67, -80)	-18.0	<b>-84</b> (-77, -92)	-19.9
• CC only	<b>-664*</b> (-651, -677)	-26.2	<b>-357*</b> (-346, -368)	-14.0	<b>-398*</b> (-381, -414)	-15.9	<b>-516*</b> (-499, -533)	-20.8
• Both	<b>-655*</b> (-629, -681)	-23.3	<b>-385*</b> (-364, -407)	-13.7	<b>-450*</b> (-416, -483)	-15.5	<b>-699*</b> (-665, -735)	-24.2
Any CC	<b>-663*</b> (-652, -675)	-25.5	<b>-364*</b> (-354, -374)	-14.0	<b>-410*</b> (-395, -425)	-15.8	<b>-559*</b> (-544, -574)	-21.7
<b>Planned admissions</b>								
<b>Total</b>	<b>-32</b> (-31, -33)	-59.2	<b>-16</b> (-15, -17)	-29.3	<b>-9</b> (-8, -11)	-19.2	<b>-16</b> (-15, -17)	-31.9
No known vulnerability	<b>-14</b> (-14, -15)	-79.1	<b>-9</b> (-9, -9)	-48.5	<b>-7</b> (-6, -7)	-38.9	<b>-11</b> (-11, -12)	-62.0
Any vulnerability	<b>-105*</b> (-101, -109)	-51.6	<b>-46*</b> (-43, -49)	-22.0	<b>-22*</b> (-18, -26)	-11.6	<b>-36*</b> (-32, -41)	-19.4
• LBW/Preterm only	<b>-12*</b> (-11, -13)	-75.3	<b>-8</b> (-7, -9)	-49.4	<b>-6</b> (-5, -7)	-42.1	<b>-11</b> (-11, -10)	-64.9
• CC only	<b>-185*</b> (-180, -190)	-49.0	<b>-71*</b> (-67, -75)	-18.4	<b>-24*</b> (-18, -30)	-6.9	<b>-40*</b> (-34, -46)	-11.6
• Both	<b>-144*</b> (-137, -152)	-60.3	<b>-86*</b> (-80, -93)	-35.8	<b>-70*</b> (-61, -79)	-31.6	<b>-114*</b> (-105, -125)	-48.2
Any CC	<b>-177*</b> (-172, -181)	-50.8	<b>-75*</b> (-71, -78)	-21.2	<b>-35*</b> (-30, -40)	-10.7	<b>-57*</b> (-52, -62)	-17.7
<b>Unplanned admissions</b>								
<b>Total</b>	<b>-88</b> (-87, -90)	-60.0	<b>-77</b> (-76, -79)	-51.9	<b>-140</b> (-138, -143)	-66.2	<b>-99</b> (-97, -101)	-64.2
No known vulnerability	<b>-68</b> (-67, -69)	-66.5	<b>-66</b> (-66, -67)	-63.2	<b>-116</b> (-115, -118)	-75.3	<b>-84</b> (-83, -85)	-76.7
Any vulnerability	<b>-176*</b> (-171, -182)	-51.6	<b>-124*</b> (-120, -128)	-36.9	<b>-245*</b> (-237, -253)	-53.2	<b>-161*</b> (-154, -168)	-47.1
• LBW/Preterm only	<b>-69</b> (-66, -72)	-68.0	<b>-64</b> (-62, -66)	-64.1	<b>-125*</b> (-121, -130)	-78.3	<b>-90*</b> (-86, -94)	-79.9
• CC only	<b>-263*</b> (-257, -270)	-47.2	<b>-157*</b> (-152, -162)	-28.5	<b>-309*</b> (-300, -318)	-43.1	<b>-189*</b> (-181, -197)	-34.8
• Both	<b>-241*</b> (-231, -251)	-59.1	<b>-216*</b> (-208, -225)	-54.8	<b>-434*</b> (-419, -450)	-73.1	<b>-311*</b> (-298, -325)	-72.8
Any CC	<b>-259*</b> (-254, -265)	-49.3	<b>-171*</b> (-166, -175)	-33.0	<b>-337*</b> (-330, -345)	-48.8	<b>-217*</b> (-210, -224)	-41.8

**LBW** – Low birthweight; **CC** – Chronic conditions \* Significantly different from children with no known vulnerability (5% level of significance).

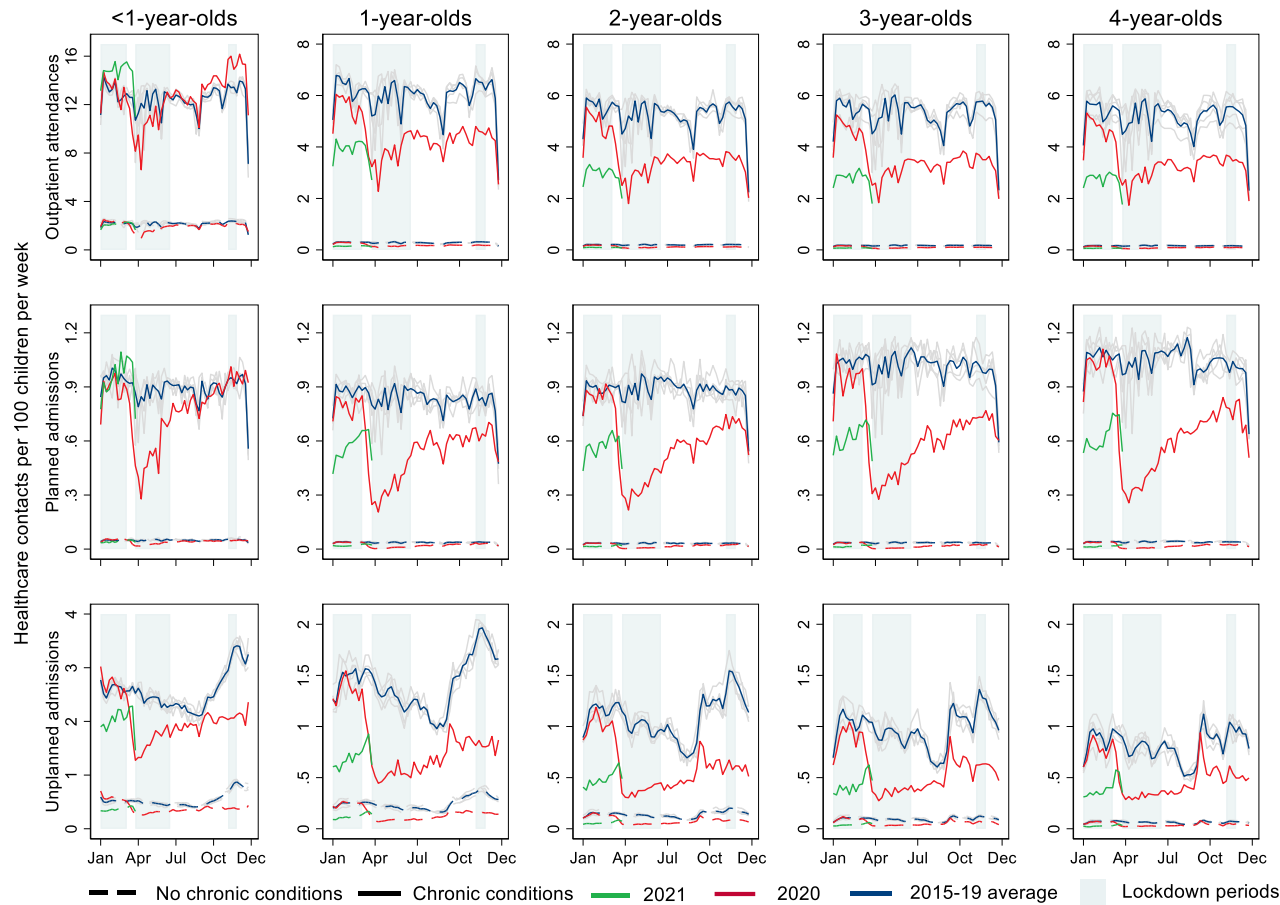


**Figure 1: Deficit in care during the pandemic (March 2020-2021), estimated from predicted minus observed rates of hospital contacts per 1,000 child-years for children aged 0 to 4 years, by clinical vulnerability status and risk factors.**



**LBW** – Low birthweight; **CC** – Chronic conditions

**Figure 2: Weekly rates of hospital contacts among children aged 0 to 4 years during the pandemic (March 2020-2021) and averaged for 2015-2019, by age and presence of a chronic condition.**



Note: January-March lockdown only affects 2021 data.