

Mendelian randomization analyses clarify the effects of height on cardiovascular diseases

Daniel Hui¹, Eric Sanford², Kimberly Lorenz^{3,4,5,6}, Scott M. Damrauer^{4,6,7}, Themistocles L. Assimes^{9,10}, Christopher S. Thom^{11,12}, Benjamin F. Voight^{3,4,5,6,*}

Affiliations:

¹ Graduate Program in Genomics and Computational Biology, University of Pennsylvania, Philadelphia, PA, USA

² Medical Scientist Training Program, Perelman School of Medicine, University of Pennsylvania, Philadelphia, PA, USA

³ Department of Systems Pharmacology and Translational Therapeutics, University of Pennsylvania, Philadelphia, PA, USA

⁴ Department of Genetics, Perelman School of Medicine, University of Pennsylvania, Philadelphia, PA, USA

⁵ Institute for Translational Medicine, Perelman School of Medicine, University of Pennsylvania, Philadelphia, PA, USA

⁶ Corporal Michael Crescenz VA Medical Center, Philadelphia, PA 19104, USA

⁷ Department of Surgery, Perelman School of Medicine, University of Pennsylvania, Philadelphia, PA 19104, USA.

⁹ VA Palo Alto Health Care System, Palo Alto, CA, USA.

¹⁰ Department of Medicine, Stanford University School of Medicine, Stanford, CA, USA.

¹¹ Division of Neonatology, Children's Hospital of Philadelphia, Philadelphia, PA, USA

¹² Department of Pediatrics, Perelman School of Medicine, University of Pennsylvania, Philadelphia, PA, USA

*Correspondence to:

Benjamin F. Voight, PhD

University of Pennsylvania Perelman School of Medicine

Smilow Center for Translational Research, Room 10-126

3400 Civic Center Boulevard

Philadelphia, PA 19104

bvoight@penmedicine.upenn.edu

Short Title: Defining genetic regulators of cardiovascular disease

Abstract

An inverse correlation between stature and risk of coronary artery disease (CAD) has been observed in several epidemiologic studies, and recent Mendelian randomization (MR) experiments have suggested causal association. However, the extent to which the effect estimated by MR can be explained by established cardiovascular risk factors is unclear, with a recent report suggesting that lung function traits could fully explain the height-CAD effect. To clarify this relationship, we utilized a well-powered set of genetic instruments for human stature, comprising >1,800 genetic variants for height and CAD. In univariable analysis, we confirmed that a one standard deviation decrease in height (~6.5 cm) was associated with a 12.0% increase in the risk of CAD, consistent with previous reports. In multivariable analysis accounting for effects from up to 12 established risk factors, we observed a >3-fold attenuation in the causal effect of height on CAD susceptibility (3.7%, $p = 0.02$). However, multivariable analyses demonstrated independent effects of height on other cardiovascular traits beyond CAD, consistent with epidemiologic associations and univariable MR experiments. In contrast with published reports, we observed minimal effects of lung function traits on CAD risk in our analyses, indicating that these traits are unlikely to explain the residual association between height and CAD risk. In sum, these results suggest the impact of height on CAD risk beyond previously established cardiovascular risk factors is minimal and not explained by lung function measures.

Introduction

Epidemiological evidence suggests that shorter height is associated with an increased risk of coronary artery disease (CAD), even after adjustment for known risk factors such as smoking status, lipid levels, body mass index (BMI), systolic blood pressure, and alcohol consumption (1–3). Efforts to ascertain true effects of genetically influenced height on human health are important. Determinants of height include modifiable nutritional and socio-economic characteristics (4), as well as closely correlated cardiovascular or anthropometric traits (e.g., wider arteries or larger lungs). Mendelian randomization (MR) is a technique that can estimate causal relationships between traits by using genetic variants and their corresponding effects identified and measured through large-scale genetic analyses such as genome-wide association studies (GWAS). Studies using Mendelian randomization have provided evidence for a univariable causal association between shorter stature and risk of CAD (5,6). However, it is still unclear how much of this effect can be explained by established, conventional CAD risk factors. Previous work has suggested that the effect of height on CAD is nearly entirely explained by lung function, specifically forced expiratory volume in 1 second (FEV1) and forced vital capacity (FVC) (7). This finding is backed by epidemiological evidence (8,9), but results from other published univariable MR analyses are inconclusive (10).

Multivariable Mendelian randomization (MVMR) allows for the investigation of causal exposure-outcome trait relationships after accounting for additional factors that may complicate simple, direct exposure-outcome associations. Here, we reaffirm the univariable causal relationship between height and CAD risk using recent GWAS for

height and CAD with increased power. Using MVMR methods, we then investigated direct effects of height on CAD risk after accounting for the effects of 12 established risk. We also expanded these experiments to consider effects of height additional cardiovascular traits within this MVMR framework. Lastly, we investigated the effects of lung function on CAD risk using univariable and multivariable MR analyses, including repeating the exact procedures used in previous work with updated and legacy datasets.

Results

We provide an overview of the experiments performed in Figure 1. We began by assembling GWAS data for height and CAD to perform experiments using the conventional, two-sample MR design. We utilized large, well-powered genetic studies for height and CAD, with mean sample size of 693,529 individuals per variant for height (11) and 122,733 CAD cases (12) (**Table S1**). For height, additional low frequency (1-5% MAF) or rare (0.1-1% MAF) genome-wide significant SNPs with effects up to 2 cm/allele were also included (13). After quality control and filtering (**Methods**), the final set of height instruments comprised of 2,037 variants, nearly two and a half times that of previous efforts (7) (**Tables S2 and S3**), explaining a theoretical 26.4% of the variance in height (**Table S4**). The set of variants had a Cragg-Donald F-Statistic of 121.5 (14) (based on the theoretical variance explained assuming Hardy-Weinberg equilibrium), minimizing any concerns regarding weak instrument bias (15,16).

Genetically influenced height is inversely associated with CAD risk

We next utilized these summary statistics to conduct univariable, two-sample MR of height on CAD risk (**Methods**). Using the inverse-variance weighted (IVW) method, we observed that a one standard deviation (SD) decrease in height (~6.5cm) (17) was associated with a 12.0% increase in the risk of CAD (OR = 1.13, 95% CI = 1.10 – 1.16, $p = 1.6 \times 10^{-20}$, **Figure 2**), a result that was consistent with previous reports (5–7). This effect had persistent and robust association in sensitivity MR analyses, including weighted median (WM) (OR = 1.12, 95% CI = 1.09 – 1.15, $p = 4.2 \times 10^{-14}$) and MR-Egger (OR = 1.10, 95% CI = 1.04 – 1.16, $p = 2.7 \times 10^{-4}$) as well as other approaches (**Table S5**). We further noted that the intercept estimated from MR-Egger was not significant, suggesting no direct statistical evidence supporting the presence of horizontal pleiotropy ($p = 0.36$). Taken collectively, these results confirm the previously observed statistical effect of shorter stature with increased susceptibility to CAD. However, these results do not themselves address the extent to which height modulates CAD risk beyond the set of conventional established risk factors for CAD, which includes alcohol use (18), birth weight (19), body mass index (20), blood pressure (21), educational attainment (22), lipid levels (23), physical activity (24), smoking behavior (25), type 2 diabetes (26), or waist-hip ratio (27).

Multivariable analysis substantially attenuates the association between genetically influenced height and CAD risk

We next sought to quantify the extent to which the catalog of established CAD risk factors could explain the association between lower stature and elevated risk of CAD. For this, we utilized multivariable Mendelian randomization (MVMR) to account for

effects of 12 risk factors with established or compelling associations with CAD

(Methods). After obtaining recent, large-scale GWAS for all traits (11,28–35), 1,906 of our 2,037 (93.6%) of variants were present in GWAS summary data across all traits and were utilized for MVMR analysis (**Table S6**). We note that a reanalysis of this slightly smaller (N variants = 1,906) instrument returned virtually identical results to the above univariable results (IVW OR = 1.13, CI= 1.10 – 1.16, $p=4.7 \times 10^{-19}$). Furthermore, the Sanderson-Windmeijer F statistic of the model was 40.9, indicating low bias due to weak instruments (36). After including all 12 risk factors jointly with height, we observed that one SD shorter stature was associated with a 3.7% increase in the risk of CAD (OR = 1.04, 95% CI = 1.01 – 1.07, $P = 0.021$, **Figure 2, Table S7**), representing a 68% attenuation in the effect compared to univariable MR. These results indicate a small, but significant, residual effect of height on susceptibility to CAD after accounting for known risk factors.

We next quantified the effects of each risk factor individually to explore the risk factors attenuating the effects of height on CAD risk in more detail. These effects were considered independent of the effects observed when all risk factors were jointly analyzed. In a series of MVMR models for height with each risk factor separately, we observed that 9 risk factors reduced height's effect on CAD risk, ranging between 0.06 – 3.65% of the total effect (**Table S8**), somewhat consistent with previous work reporting 1-3% attenuation in height effect for each risk factor (7). In contrast, 3 risk factors (smoking initiation, physical activity, and waist-hip ratio) increased the effect of height on CAD susceptibility, between 0.09% – 1.03%. These results indicate that the

attenuation of the effect of height of CAD in the full joint model is not entirely explained by a single factor, but instead by a combination of risk factors in aggregate.

Lung function measures are not genetically causally associated with CAD susceptibility

Recent work suggested that lung function measures are inversely associated with cardiovascular events (8–10). Furthermore, Mendelian randomization analyses suggested that the bulk of the causal effect of height on CAD susceptibility is complicated by FEV1 and FVC (7). Given these reports, we next focused our efforts on (i) characterizing what relationship exists between these measures and CAD susceptibility, and (ii) if these measures could explain the residual putative causal effect estimated between height and CAD.

To develop sets of FEV1 and FVC genetic instruments and perform MVMR analyses, we utilized a large, recently published GWAS study for both traits (37). After quality control and filtering analogous to what we applied to our height genetic instrument (**Methods**), the final sets of genetic variants comprised 171 for FEV1 and 128 for FVC, which explained a theoretical 3.26% and 2.32% of the genetic variance to each trait, respectively (**Tables S9-S12**). These sets of instruments had Cragg-Donald F-Statistics of 78.8 and 74.1, respectively, arguing against weak instrument bias (14–16).

We then performed 5 sets of MR experiments to examine the effects of FEV1 and FVC, and their roles as attenuators of height's effect on susceptibility to CAD. Analyses were

conducted using both univariable and multivariable methods, as well as recently published and legacy data sets. Collectively, we observed little attenuation of height's effect on CAD risk due to lung function factors, as well as scant univariable association between either lung function measure and CAD risk (**Figure 3, Tables S13-S20**).

First, we performed univariable MR analysis for each lung function measure on CAD susceptibility (**Figure 3a**). We observed no significant effect of FEV1 on CAD risk using inverse-variance weighted, weighted median, or MR-Egger methods ($p_{IVW} = 0.08$, $p_{WM} = 0.78$, $p_{Egger} = 0.44$). Effects were directionally inconsistent, with increased FEV1 increasing CAD risk by MR-Egger, but increased FEV1 associated with decreased CAD risk by IVW and WM methods, though we note that all results do not reject the null hypothesis. For FVC, results were also not significant, except for those from the IVW method ($p_{IVW} = 0.034$, $p_{WM} = 0.061$, $p_{Egger} = 0.61$). However, these results were directionally consistent across methods, with decreased FVC associated with increased CAD risk, consistent with epidemiological evidence (8,9).

Second, we performed MVMR with FEV1 and FVC, both with and without the previously described 12 risk factors using the same 1,906 variants as were used in MVMR analysis. After including FEV1 and FVC, we observed a virtually identical, attenuated association between decreased height and CAD susceptibility as we observed from our prior experiments considering those 12 established risk factors without FEV1 and FVC (OR = 1.04, 95% CI = 1.00 - 1.07, $p = 0.024$, **Figure 3b**). Neither FEV1 or FVC were associated with CAD susceptibility in this joint model ($p_{FEV1} = 0.41$ and $p_{FVC} = 0.39$). Similarly, when we excluded the 12 established risk factors and included only FEV1 and FVC as additional factors with height, we did not observe

attenuation versus univariable height-CAD analysis (OR = 1.13, 95% CI = 1.10 - 1.16, $p = 2.8 \times 10^{-18}$, **Figure 3c**). Again, the associations for either lung function factor were, at best, modest ($p_{FEV1} = 0.39$ and $p_{FVC} = 0.025$).

Third, we performed additional MVMR analyses that instead utilized the lung function GWAS considered in prior analyses, which had suggested a lung function complicating effect (**URLs**). Again, we did not observe substantial attenuation in height's effect on CAD risk, (OR = 1.04, 95% CI = 1.01 - 1.08, $p = 0.014$, **Figure 3d**). When we modeled FEV1 and FVC exclusively with height, the effect of height on CAD risk did not appear to be reduced by lung function (OR = 1.13, 95% CI = 1.10 - 1.16, $p = 3.2 \times 10^{-17}$, **Figure 3e**), although the effects for both lung function measures were nominally significant at best ($p_{FEV1} = 0.026$ and $p_{FVC} = 0.052$).

Fourth, we created a restricted set of height genetic instruments that excluded variants nominally associated with FEV1 or FVC (37) ($p < 0.05$) to more directly compare between results from the published work suggesting lung function's effect on height (7), and only retained variants present in lung function, height, and CAD GWAS. Of 2,037 SNPs in our original set of height instruments, 1,112 remained and were used in univariable MR experiments analyzing the effect of height on CAD. We continued to observe a robust association between decreased height and increased CAD risk. Estimated effects, using WM (OR = 1.12, CI = 1.07 - 1.17, $p = 1.0 \times 10^{-7}$) and IVW methods (OR = 1.13, CI = 1.09 - 1.17, $p = 3.3 \times 10^{-11}$), were similar to our univariable analyses (**Figure S1a**), and the estimated effect from MR-Egger increased slightly (OR = 1.13, CI = 1.04 - 1.23, $p = 2.7 \times 10^{-3}$).

Fifth, we filtered nominally associated FEV1 and FVC variants from our height IVs using older summary statistics for lung function (**URLs**) rather than Shrine et al (37), leaving 747 variants. In this case, we do observe an attenuation of association for height on CAD risk, consistent with the previous reports (6) (**Figure S1b**). Estimates of the effect of height on CAD risk also decreased (IVW estimate 12.0% to 8.9%, $p = 1.6 \times 10^{-20}$ to $p = 1.4 \times 10^{-3}$; WM estimate 11.3% to 3.7%, $p = 4.2 \times 10^{-14}$ to $p = 0.22$; MR-Egger estimate 9.8% to 7.9%, $p = 2.7 \times 10^{-4}$ to $p = 0.24$).

The effect of height on coronary artery disease risk and ischemic stroke risk, but not other cardiovascular disease risks, is attenuated by established risk factors

Finally, we extended our analyses to consider other cardiovascular disease risks. Consistent with our prior results, the effect of height on coronary artery disease risk was attenuated in a MVMR context adjusting for up to 12 established cardiovascular risk factors, negating the significant effects seen in epidemiologic and univariable studies (**Fig 4**). Although this trend was consistent for the effect of height on ischemic stroke risk, the effects of height on other cardiovascular disease risks (venous thromboembolism, abdominal aortic aneurysm, atrial fibrillation) were not affected by related established causal risk factors, remaining consistent with epidemiologic observations and univariable MR estimations (**Fig 4**).

Discussion

Using well-powered GWAS, we recapitulated previous evidence that lower stature increases susceptibility to CAD, estimating a 12% increased CAD risk per 1 standard

deviation unit decrease in height. This effect was substantially attenuated to 3.7% after accounting for a collection of 12 CAD risk factors. In contrast with prior work, we demonstrate – through univariate and multivariable MR experiments directly – that lung function explains little, if any effect, of height on CAD susceptibility. Our findings refute the notion that height, height-related nutritional status, or socioeconomic status meaningfully contributes to CAD risk (4).

Several factors could be driving differences between our work and previously published findings of lung function on CAD risk. Certain phenotype-specific covariates, namely height, were not included in the lung function GWAS results used in Marouli et al. (7). By contrast, the GWAS we used included height as a covariate in the models used for association testing. It is known that including heritable covariate-adjusted data can induce collider biases in MR studies (38). While this might cloud the interpretation of the results using those data for univariate and multivariable experiments about the relationship between FEV1 and/or FVC and CAD risk, our major conclusion contrasts previous reports. In our experiments, lung function did not explain the relationship of height to CAD. In multivariable analyses, a small effect of height persisted (**Figure 3d**). One reasonable interpretation of these findings is that lung function may be a causal risk factor for CAD as reported previously (39), even when considered jointly with other cardiometabolic risk factors.

We note that the procedure used in Marouli et al., in which variants nominally associated (i.e., $p < 0.05$) with lung function were removed from height instruments, inherently reduces power. This reduction could have influenced the apparent attenuation of lung function on height's effect on CAD risk. However, we did not observe

a similar attenuation when we utilized their procedure using a larger genetic instrument for height. These findings occurred despite strong similarities between lung function GWAS size (Shrine et al. N=400,102 vs. Neale Lab N=361,194) and high degree of sample overlap, with both GWAS being primarily conducted in the UK Biobank. The collection of these results provide evidence against the hypothesis that lung function substantially attenuates height's genetically causal effect on CAD risk. Instead, other established CAD risk factors attenuated the relationship between height and CAD.

One exposure we considered in the multivariable analysis but did not include was high-density lipoprotein (HDL) cholesterol levels. While epidemiological evidence has suggested an inverse relationship between HDL and CAD risk (40), randomized controlled trials and MR studies have largely not supported this relationship (41,42), and newer evidence has suggested the role of HDL on CAD risk is nonlinear and/or context specific (43). Moreover, HDL is correlated with triglyceride levels, which does have a growing body of evidence to support causality and which we did include in our multivariable analysis. Thus, we opted to not include HDL in these analyses. Furthermore, while not significantly different from OR=1, the relationship between alcohol exposure and CAD is complex and potentially non-linear (18), and thus we advise strong caution against strong interpretations of the directionality of alcohol exposure in multivariable analyses.

Our study had some limitations. First, there is some sample overlap between exposure and outcome traits, which may induce bias in effect estimates (44). However, given the samples sizes underlying these data sets, we expect the effect of biases from sample overlap to be minimal. Second, we were limited to the extent that we could

address residual population stratification and/or assortative mating not accounted for in the primary GWAS. Future MR studies using siblings could potentially address this limitation (45), with prior work demonstrating stronger effects of height on CAD risk using this design (46). Finally, how well these findings may translate to non-European ancestries remains unclear as our analyses were conducted almost exclusively in individuals of predominantly European descent (47–49). Even within ancestry groups, stratification effects – such as population structure and stratification across Europe (50) – or context-specificity (51), evident in BMI (52,53), may cause genetic effects to vary. Future work to explore differences in risk by ancestry would be an important consideration as such data become more readily available.

In conclusion, we observed a limited effect of height on CAD after accounting for established risk factors. We additionally provide evidence that lung function has a minimal role in attenuating the effect of height on CAD, which contrasts recently published work. These findings help explain the clinical and epidemiological significance of height as a risk factor for CAD and other cardiovascular conditions.

Methods

Variants used as instruments for height

We begin with the set of conditionally independent genome-wide significant ($p < 5 \times 10^{-8}$) SNPs (54) from a recent height GWAS (11) as the starting point for the construction of our genetic instruments for height. For robustness across exposures without conditionally independent results, only SNPs with genome-wide significance in both the

marginal and conditional analysis were retained. To this initial pool of SNPs, we included an additional set of low frequency (1% to 5% MAF) or rare (0.1 - 1% MAF) genome-wide significant associations for height SNPs (13), where the SNP with lowest p-value was retained in case of duplicates. Proxies for palindromic SNPs (i.e., variants with A/T or C/G alleles) with $r^2 \geq 0.95$ were obtained from the primary height GWAS using 1000 Genomes EUR as LD reference (**S Table 3**) (55,56) – all variants were lifted over to hg19 (**URLs**). Finally, SNPs in networks of LD with $r^2 > 0.05$ were pruned using a graph-based approach with a greedy approximation algorithm (**URLs**) using 1000 Genomes Phase 3 EUR as the LD reference. This filtering resulted in an overall set of instruments which included 2,041 genome-wide significantly associated, non-palindromic, statistically independent ($r^2 < 0.05$) SNPs, including variants down to 0.1% allele frequency, nearly 2.5-fold more than previous efforts (7). Of these 2,041 SNPs, 2,037 were present in the CAD GWAS and used in further analyses. Alleles and effect sizes were oriented to the height-increasing allele. This set of instruments had 80% power to detect an odds ratio of 1.018 at alpha .05 (**URLs**) (57), assuming a CAD GWAS sample size of 547,261, case ratio of 0.224, and R^2 of 0.264 in height using the height instruments.

Established cardiovascular risk factors

We obtained a collection of established risk factors for CAD from the literature to evaluate potentially indirect effects of height on CAD. Summary statistics from GWAS were acquired for body mass index (BMI) (11), plasma lipid levels (low density lipoprotein and triglycerides) (28), systolic and diastolic blood pressure (29), waist-hip

ratio (30), smoking initiation (31), alcohol consumption (drinks per week (31)), educational attainment (32), birth weight (33), physical activity (34), and type 2 diabetes (35). Units for systolic blood pressure were converted to 5 mmHg from 1 mmHg (29,58); the remaining GWAS were already expressed in units of standard deviations. For each trait, all alleles were harmonized to correspond to the height-increasing effect allele.

Generation of additional instrument sets for FEV1 and FVC

GWAS summary statistics were obtained for FEV1 and FVC (37). Lists of conditionally independent genome-wide significant lead variants were obtained from their respective GWAS, with palindromic SNPs and linkage disequilibrium addressed in an analogous way to the set of height instruments were filtered, as described above. 171 and 128 SNPs were included in the final set of instruments for FEV1 and FVC, respectively. Alleles and effect sizes were harmonized to the height-increasing effect allele.

Epidemiologic associations

Observed epidemiologic effects were manually curated from publicly available sources, including Wormser *et al.* (59) for height on ischemic stroke risk, Carter *et al.* (60) for height on abdominal aortic aneurysm risk, and Lai *et al.* (61) for all other outcomes.

Mendelian randomization methods

Univariable two-sample Mendelian randomization analyses were carried out using the inverse-variance weighted, weighted median (62), and MR-Egger (63) methods with the R package MendelianRandomization (64). For completeness, we also present the

results from eight additional methods (and note qualitatively similar results as to what we highlighted in the main text). In the univariable analysis, 2,037 of 2,041 SNPs for the height instrument were present in the CAD GWAS results and were used for analysis. Evidence of horizontal pleiotropy was evaluated using the intercept from MR-Egger. Outcome GWAS summary statistics were obtained from studies listed in **S Table 1** (28–34,65–68).

Multivariable Mendelian randomization analysis was conducted using the R package WSpiller/MVMR (36). Across all exposures, 1,906 SNPs of the 2,037 were present in every GWAS and were used for analysis. Forest plots were constructed using the forestplot R package. Where indicated, odds ratios were converted to true effects by exponentiation (69).

Author Contributions

S.M.D., T.L.A., and B.F.V. conceived of the project. D.H., K.L., and B.F.V. designed the experiments. D.H. and E.S. curated the data and performed the analysis. D.H., C.T., and B.F.V. prepared the initial draft of the manuscript. All authors provided critical reviews and edits to the manuscript. B.F.V. supervised and administered all aspects of the work.

Acknowledgements

For data from Klarin et al, approved dbGAP access to phs001672.v6.p1 was provided to B.F.V. (dbGAP project ID: 27398). The authors thank the Million Veteran Program

(MVP) staff, researchers, and volunteers, who have contributed to MVP, and especially participants who previously served their country in the military and now generously agreed to enroll in the study (see <https://www.research.va.gov/mvp/> for more details). This research is based on data from the Million Veteran Program, Office of Research and Development, Veterans Health Administration, and was supported by the Veterans Administration (VA) Cooperative Studies Program (CSP) award #G002. B.F.V. acknowledges support from the National Institutes of Health (DK126194 and DK101478) and Linda Pechenik Montague Investigator Award. C.S.T acknowledges support from the National Institutes of Health (HL156052). S.M.D. is supported by the U.S. Department of Veterans Affairs award IK2-CX001780. This publication does not represent the views of the Department of Veterans Affairs or the United States Government. The funders had no role in study design, data collection and analysis, decision to publish, or preparation of the manuscript.

Conflicting Interest Statement

D.H., E.S., K.L., T.L.A., C.S.T., and B.F.V. have no conflicting interest to report. S.M.D. receives research support from RenalytixAI and personal consulting fees from Calico Labs, outside the scope of the current research.

URLs

UCSC Liftover: <https://genome.ucsc.edu/cgi-bin/hgLiftOver>

Select analysis code: https://github.com/daniel-hui/Height-CAD_MVMR

Neale Lab UK Biobank GWAS results: <http://www.nealelab.is/uk-biobank>

MR power calculation: <https://shiny.cnsgenomics.com/mRnd>

References

1. Hebert PR, Rich-Edwards JW, Manson JE, Ridker PM, Cook NR, O'Connor GT, et al. Height and incidence of cardiovascular disease in male physicians. *Circulation*. 1993 Oct;88(4 Pt 1):1437–43.
2. Lee CMY, Barzi F, Woodward M, Batty GD, Giles GG, Wong JW, et al. Adult height and the risks of cardiovascular disease and major causes of death in the Asia-Pacific region: 21,000 deaths in 510,000 men and women. *Int J Epidemiol*. 2009 Aug;38(4):1060–71.
3. Pes GM, Ganau A, Tognotti E, Errigo A, Rocchi C, Dore MP. The association of adult height with the risk of cardiovascular disease and cancer in the population of Sardinia. *PLoS One*. 2018;13(4):e0190888.
4. Perkins JM, Subramanian SV, Davey Smith G, Özaltın E. Adult height, nutrition, and population health. *Nutr Rev*. 2016 Mar;74(3):149–65.
5. Nelson CP, Hamby SE, Saleheen D, Hopewell JC, Zeng L, Assimes TL, et al. Genetically determined height and coronary artery disease. *N Engl J Med*. 2015 Apr 23;372(17):1608–18.
6. Nüesch E, Dale C, Palmer TM, White J, Keating BJ, van Iperen EP, et al. Adult height, coronary heart disease and stroke: a multi-locus Mendelian randomization meta-analysis. *Int J Epidemiol*. 2016 Dec 1;45(6):1927–37.
7. Marouli E, Del Greco MF, Astley CM, Yang J, Ahmad S, Berndt SI, et al. Mendelian randomisation analyses find pulmonary factors mediate the effect of height on coronary artery disease. *Commun Biol*. 2019;2:119.
8. Lee HM, Liu MA, Barrett-Connor E, Wong ND. Association of lung function with coronary heart disease and cardiovascular disease outcomes in elderly: the Rancho Bernardo study. *Respir Med*. 2014 Dec;108(12):1779–85.
9. Chandra D, Gupta A, Fitzpatrick M, Haberlen SA, Neupane M, Leader JK, et al. Lung Function, Coronary Artery Disease, and Mortality in HIV. *Ann Am Thorac Soc*. 2019 Jun;16(6):687–97.
10. Au Yeung SL, Borges MC, Lawlor DA. Association of Genetic Instrumental Variables for Lung Function on Coronary Artery Disease Risk: A 2-Sample Mendelian Randomization Study. *Circ Genomic Precis Med*. 2018 Apr;11(4):e001952.
11. Yengo L, Sidorenko J, Kemper KE, Zheng Z, Wood AR, Weedon MN, et al. Meta-analysis of genome-wide association studies for height and body mass index in ~700000 individuals of European ancestry. *Hum Mol Genet*. 2018 Oct 15;27(20):3641–9.

12. van der Harst P, Verweij N. Identification of 64 Novel Genetic Loci Provides an Expanded View on the Genetic Architecture of Coronary Artery Disease. *Circ Res*. 2018 Feb 2;122(3):433–43.
13. Marouli E, Graff M, Medina-Gomez C, Lo KS, Wood AR, Kjaer TR, et al. Rare and low-frequency coding variants alter human adult height. *Nature*. 2017 Feb 9;542(7640):186–90.
14. Burgess S, Thompson SG, CRP CHD Genetics Collaboration. Avoiding bias from weak instruments in Mendelian randomization studies. *Int J Epidemiol*. 2011 Jun;40(3):755–64.
15. Stock JH, Wright JH, Yogo M. A Survey of Weak Instruments and Weak Identification in Generalized Method of Moments. *J Bus Econ Stat*. 2002 Oct;20(4):518–29.
16. Baum CF, Schaffer ME, Stillman S. Enhanced Routines for Instrumental Variables/Generalized Method of Moments Estimation and Testing. *Stata J Promot Commun Stat Stata*. 2007 Dec;7(4):465–506.
17. Berg JJ, Harpak A, Sinnott-Armstrong N, Joergensen AM, Mostafavi H, Field Y, et al. Reduced signal for polygenic adaptation of height in UK Biobank. *eLife*. 2019 Mar 21;8:e39725.
18. Biddinger KJ, Emdin CA, Haas ME, Wang M, Hindy G, Ellinor PT, et al. Association of Habitual Alcohol Intake With Risk of Cardiovascular Disease. *JAMA Netw Open*. 2022 Mar 1;5(3):e223849.
19. Zeng P, Zhou X. Causal Association Between Birth Weight and Adult Diseases: Evidence From a Mendelian Randomization Analysis. *Front Genet*. 2019;10:618.
20. Larsson SC, Bäck M, Rees JMB, Mason AM, Burgess S. Body mass index and body composition in relation to 14 cardiovascular conditions in UK Biobank: a Mendelian randomization study. *Eur Heart J*. 2020 Jan 7;41(2):221–6.
21. Malik R, Georgakis MK, Vujkovic M, Damrauer SM, Elliott P, Karhunen V, et al. Relationship Between Blood Pressure and Incident Cardiovascular Disease: Linear and Nonlinear Mendelian Randomization Analyses. *Hypertens Dallas Tex 1979*. 2021 Jun;77(6):2004–13.
22. Zeng L, Ntalla I, Kessler T, Kastrati A, Erdmann J, UK Biobank CardioMetabolic Consortium CHD Working Group, et al. Genetically modulated educational attainment and coronary disease risk. *Eur Heart J*. 2019 Aug 1;40(29):2413–20.
23. Holmes MV, Asselbergs FW, Palmer TM, Drenos F, Lanktree MB, Nelson CP, et al. Mendelian randomization of blood lipids for coronary heart disease. *Eur Heart J*. 2015 Mar 1;36(9):539–50.
24. Zhuang Z, Gao M, Yang R, Li N, Liu Z, Cao W, et al. Association of physical activity, sedentary behaviours and sleep duration with cardiovascular diseases and lipid profiles: a Mendelian randomization analysis. *Lipids Health Dis*. 2020 May 8;19(1):86.

25. Levin MG, Klarin D, Assimes TL, Freiberg MS, Ingelsson E, Lynch J, et al. Genetics of Smoking and Risk of Atherosclerotic Cardiovascular Diseases: A Mendelian Randomization Study. *JAMA Netw Open*. 2021 Jan 4;4(1):e2034461.
26. Ahmad OS, Morris JA, Mujammami M, Forgetta V, Leong A, Li R, et al. A Mendelian randomization study of the effect of type-2 diabetes on coronary heart disease. *Nat Commun*. 2015 May 28;6:7060.
27. Lv WQ, Zhang X, Fan K, Xia X, Zhang Q, Liu HM, et al. Genetically driven adiposity traits increase the risk of coronary artery disease independent of blood pressure, dyslipidaemia, glycaemic traits. *Eur J Hum Genet EJHG*. 2018 Oct;26(10):1547–53.
28. Klarin D, Damrauer SM, Cho K, Sun YV, Teslovich TM, Honerlaw J, et al. Genetics of blood lipids among ~300,000 multi-ethnic participants of the Million Veteran Program. *Nat Genet*. 2018 Nov;50(11):1514–23.
29. Evangelou E, Warren HR, Mosen-Ansorena D, Mifsud B, Pazoki R, Gao H, et al. Genetic analysis of over 1 million people identifies 535 new loci associated with blood pressure traits. *Nat Genet*. 2018 Oct;50(10):1412–25.
30. Shungin D, Winkler TW, Croteau-Chonka DC, Ferreira T, Locke AE, Mägi R, et al. New genetic loci link adipose and insulin biology to body fat distribution. *Nature*. 2015 Feb 12;518(7538):187–96.
31. Liu M, Jiang Y, Wedow R, Li Y, Brazel DM, Chen F, et al. Association studies of up to 1.2 million individuals yield new insights into the genetic etiology of tobacco and alcohol use. *Nat Genet*. 2019 Feb;51(2):237–44.
32. Lee JJ, Wedow R, Okbay A, Kong E, Maghziyan O, Zacher M, et al. Gene discovery and polygenic prediction from a genome-wide association study of educational attainment in 1.1 million individuals. *Nat Genet*. 2018 Jul 23;50(8):1112–21.
33. Warrington NM, Beaumont RN, Horikoshi M, Day FR, Helgeland Ø, Laurin C, et al. Maternal and fetal genetic effects on birth weight and their relevance to cardio-metabolic risk factors. *Nat Genet*. 2019 May;51(5):804–14.
34. Doherty A, Smith-Byrne K, Ferreira T, Holmes MV, Holmes C, Pulit SL, et al. GWAS identifies 14 loci for device-measured physical activity and sleep duration. *Nat Commun*. 2018 Dec 10;9(1):5257.
35. Mahajan A, Taliun D, Thurner M, Robertson NR, Torres JM, Rayner NW, et al. Fine-mapping type 2 diabetes loci to single-variant resolution using high-density imputation and islet-specific epigenome maps. *Nat Genet*. 2018 Nov;50(11):1505–13.
36. Sanderson E, Davey Smith G, Windmeijer F, Bowden J. An examination of multivariable Mendelian randomization in the single-sample and two-sample summary data settings. *Int J Epidemiol*. 2019 Jun 1;48(3):713–27.

37. Shrine N, Guyatt AL, Erzurumluoglu AM, Jackson VE, Hobbs BD, Melbourne CA, et al. New genetic signals for lung function highlight pathways and chronic obstructive pulmonary disease associations across multiple ancestries. *Nat Genet.* 2019 Mar;51(3):481–93.
38. Hartwig FP, Tilling K, Davey Smith G, Lawlor DA, Borges MC. Bias in two-sample Mendelian randomization when using heritable covariable-adjusted summary associations. *Int J Epidemiol.* 2021 Nov 10;50(5):1639–50.
39. Au Yeung SL, Borges MC, Lawlor DA, Schooling CM. Impact of lung function on cardiovascular diseases and cardiovascular risk factors: a two sample bidirectional Mendelian randomisation study. *Thorax.* 2022 Feb;77(2):164–71.
40. Toth PP. High-density lipoprotein and cardiovascular risk. *Circulation.* 2004 Apr 20;109(15):1809–12.
41. Landmesser U, Hazen S. HDL-cholesterol, genetics, and coronary artery disease: the myth of the “good cholesterol”? *Eur Heart J.* 2018 Jun 14;39(23):2179–82.
42. Voight BF, Peloso GM, Orho-Melander M, Frikke-Schmidt R, Barbalic M, Jensen MK, et al. Plasma HDL cholesterol and risk of myocardial infarction: a mendelian randomisation study. *Lancet Lond Engl.* 2012 Aug 11;380(9841):572–80.
43. Singh K, Rohatgi A. Examining the paradox of high high-density lipoprotein and elevated cardiovascular risk. *J Thorac Dis.* 2018 Jan;10(1):109–12.
44. Burgess S, Davies NM, Thompson SG. Bias due to participant overlap in two-sample Mendelian randomization. *Genet Epidemiol.* 2016 Nov;40(7):597–608.
45. Brumpton B, Sanderson E, Heilbron K, Hartwig FP, Harrison S, Vie GÅ, et al. Avoiding dynastic, assortative mating, and population stratification biases in Mendelian randomization through within-family analyses. *Nat Commun.* 2020 Jul 14;11(1):3519.
46. Howe LJ, Brumpton B, Rasheed H, Åsvold BO, Davey Smith G, Davies NM. Taller height and risk of coronary heart disease and cancer: A within-sibship Mendelian randomization study. *eLife.* 2022 Mar 18;11:e72984.
47. NCD Risk Factor Collaboration (NCD-RisC). A century of trends in adult human height. *eLife.* 2016 Jul 26;5:e13410.
48. Martin AR, Gignoux CR, Walters RK, Wojcik GL, Neale BM, Gravel S, et al. Human Demographic History Impacts Genetic Risk Prediction across Diverse Populations. *Am J Hum Genet.* 2017 Apr 6;100(4):635–49.
49. Stulp G, Barrett L, Tropf FC, Mills M. Does natural selection favour taller stature among the tallest people on earth? *Proc Biol Sci.* 2015 May 7;282(1806):20150211.

50. Sohail M, Maier RM, Ganna A, Bloemendal A, Martin AR, Turchin MC, et al. Polygenic adaptation on height is overestimated due to uncorrected stratification in genome-wide association studies. *eLife*. 2019 Mar 21;8:e39702.
51. Mostafavi H, Harpak A, Agarwal I, Conley D, Pritchard JK, Przeworski M. Variable prediction accuracy of polygenic scores within an ancestry group. *eLife*. 2020 Jan 30;9:e48376.
52. Kilpeläinen TO, Qi L, Brage S, Sharp SJ, Sonestedt E, Demerath E, et al. Physical activity attenuates the influence of FTO variants on obesity risk: a meta-analysis of 218,166 adults and 19,268 children. *PLoS Med*. 2011 Nov;8(11):e1001116.
53. Abadi A, Alyass A, Robiou du Pont S, Bolker B, Singh P, Mohan V, et al. Penetrance of Polygenic Obesity Susceptibility Loci across the Body Mass Index Distribution. *Am J Hum Genet*. 2017 Dec 7;101(6):925–38.
54. Yang J, Ferreira T, Morris AP, Medland SE, Genetic Investigation of ANthropometric Traits (GIANT) Consortium, DIAbetes Genetics Replication And Meta-analysis (DIAGRAM) Consortium, et al. Conditional and joint multiple-SNP analysis of GWAS summary statistics identifies additional variants influencing complex traits. *Nat Genet*. 2012 Mar 18;44(4):369–75, S1-3.
55. Ward LD, Kellis M. HaploReg v4: systematic mining of putative causal variants, cell types, regulators and target genes for human complex traits and disease. *Nucleic Acids Res*. 2016 Jan 4;44(D1):D877-881.
56. 1000 Genomes Project Consortium, Auton A, Brooks LD, Durbin RM, Garrison EP, Kang HM, et al. A global reference for human genetic variation. *Nature*. 2015 Oct 1;526(7571):68–74.
57. Brion MJA, Shakhbazov K, Visscher PM. Calculating statistical power in Mendelian randomization studies. *Int J Epidemiol*. 2013 Oct;42(5):1497–501.
58. Lewington S, Clarke R, Qizilbash N, Peto R, Collins R, Prospective Studies Collaboration. Age-specific relevance of usual blood pressure to vascular mortality: a meta-analysis of individual data for one million adults in 61 prospective studies. *Lancet Lond Engl*. 2002 Dec 14;360(9349):1903–13.
59. Emerging Risk Factors Collaboration. Adult height and the risk of cause-specific death and vascular morbidity in 1 million people: individual participant meta-analysis. *Int J Epidemiol*. 2012 Oct;41(5):1419–33.
60. Carter JL, Morris DR, Sherliker P, Clack R, Lam KBH, Halliday A, et al. Sex-Specific Associations of Vascular Risk Factors With Abdominal Aortic Aneurysm: Findings From 1.5 Million Women and 0.8 Million Men in the United States and United Kingdom. *J Am Heart Assoc*. 2020 Feb 18;9(4):e014748.

61. Lai FY, Nath M, Hamby SE, Thompson JR, Nelson CP, Samani NJ. Adult height and risk of 50 diseases: a combined epidemiological and genetic analysis. *BMC Med.* 2018 Oct 25;16(1):187.
62. Bowden J, Davey Smith G, Haycock PC, Burgess S. Consistent Estimation in Mendelian Randomization with Some Invalid Instruments Using a Weighted Median Estimator. *Genet Epidemiol.* 2016 May;40(4):304–14.
63. Bowden J, Davey Smith G, Burgess S. Mendelian randomization with invalid instruments: effect estimation and bias detection through Egger regression. *Int J Epidemiol.* 2015 Apr;44(2):512–25.
64. Yavorska OO, Burgess S. MendelianRandomization: an R package for performing Mendelian randomization analyses using summarized data. *Int J Epidemiol.* 2017 Dec 1;46(6):1734–9.
65. Malik R, Chauhan G, Traylor M, Sargurupremraj M, Okada Y, Mishra A, et al. Multiancestry genome-wide association study of 520,000 subjects identifies 32 loci associated with stroke and stroke subtypes. *Nat Genet.* 2018 Apr;50(4):524–37.
66. Klarin D, Verma SS, Judy R, Dikilitas O, Wolford BN, Paranjpe I, et al. Genetic Architecture of Abdominal Aortic Aneurysm in the Million Veteran Program. *Circulation.* 2020 Oct 27;142(17):1633–46.
67. Klarin D, Busenkell E, Judy R, Lynch J, Levin M, Haessler J, et al. Genome-wide association analysis of venous thromboembolism identifies new risk loci and genetic overlap with arterial vascular disease. *Nat Genet.* 2019 Nov;51(11):1574–9.
68. Roselli C, Chaffin MD, Weng LC, Aeschbacher S, Ahlberg G, Albert CM, et al. Multi-ethnic genome-wide association study for atrial fibrillation. *Nat Genet.* 2018 Jun 11;50(9):1225–33.
69. Burgess S, Labrecque JA. Mendelian randomization with a binary exposure variable: interpretation and presentation of causal estimates. *Eur J Epidemiol.* 2018 Oct;33(10):947–52.

Figures

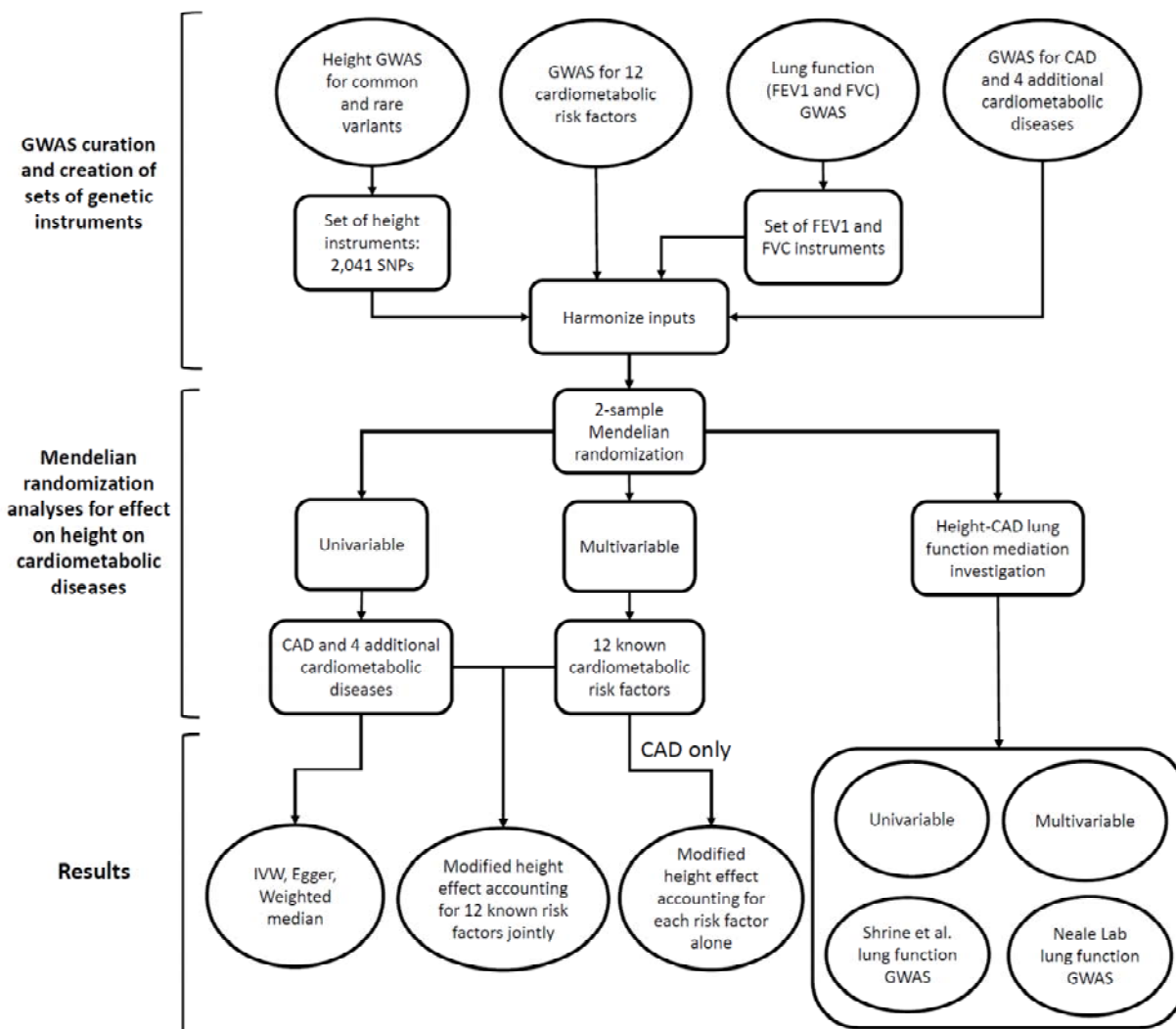


Figure 1. Schematic flowchart outlining our experimental setup. We collected genetic instrument for height and effect sizes for 12 additional CAD risk factors as well as for lung function. These data were used in two-sample Mendelian randomization in univariable and multivariable investigation.

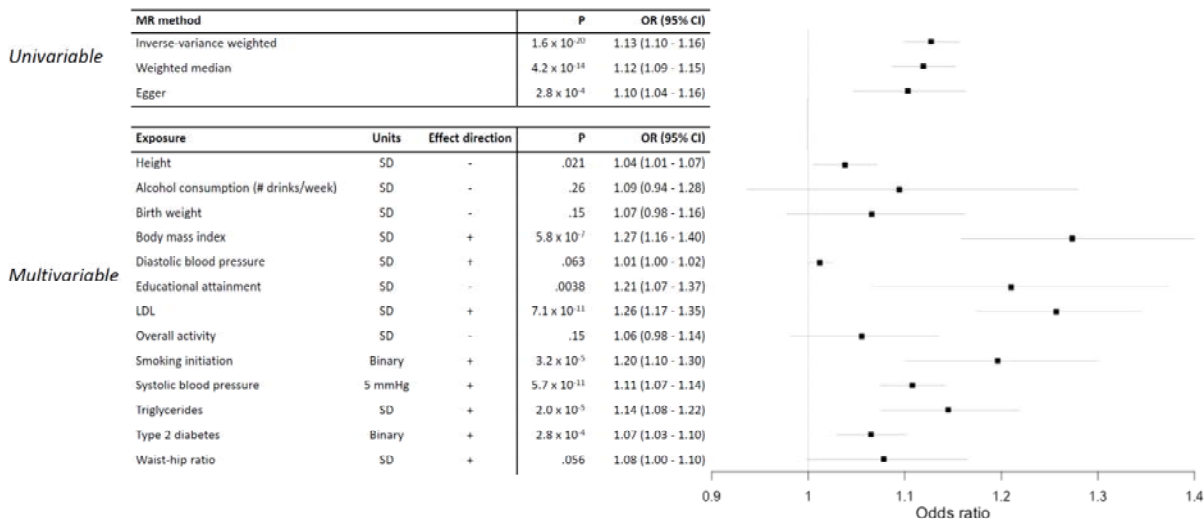


Figure 2. Forest plots of two-sample MR results using height and 12 additional CAD risk factors. a) Univariable height-CAD analyses using inverse-variance weighted, weighted median, and Egger MR methods. b) Multivariable MR results modeling all risk factors together. Effect direction indicates direction of the exposure that increases CAD risk – effects of all risk factors were flipped to OR>1.

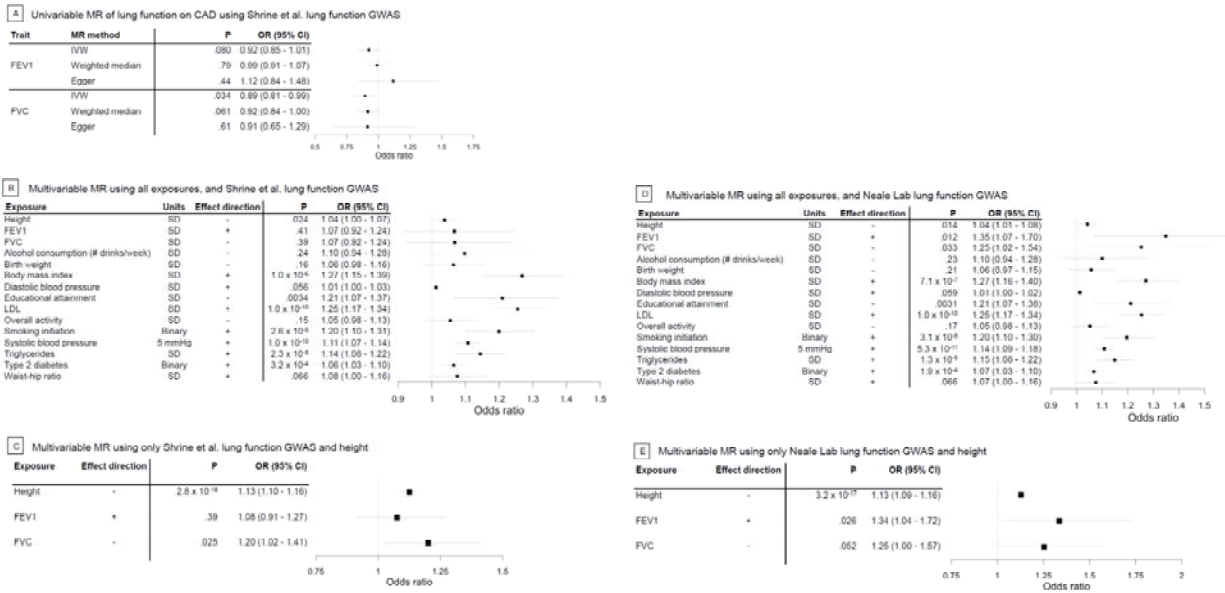


Figure 3. Investigation of lung function in complicating the effect on CAD and a causal height-CAD relationship. a) Univariable MR analyses of lung function and CAD. b) Multivariable MR results modeling all risk factors together, using Shrine et al. lung function GWAS. c) Multivariable MR results modeling height and lung function factors only using Shrine et al. lung function GWAS, on CAD risk. d) Multivariable MR results modeling all risk factors together, but using Neale Lab lung function GWAS. e) Multivariable MR results modeling height and lung function factors only but using Neale Lab lung function GWAS, on CAD risk.

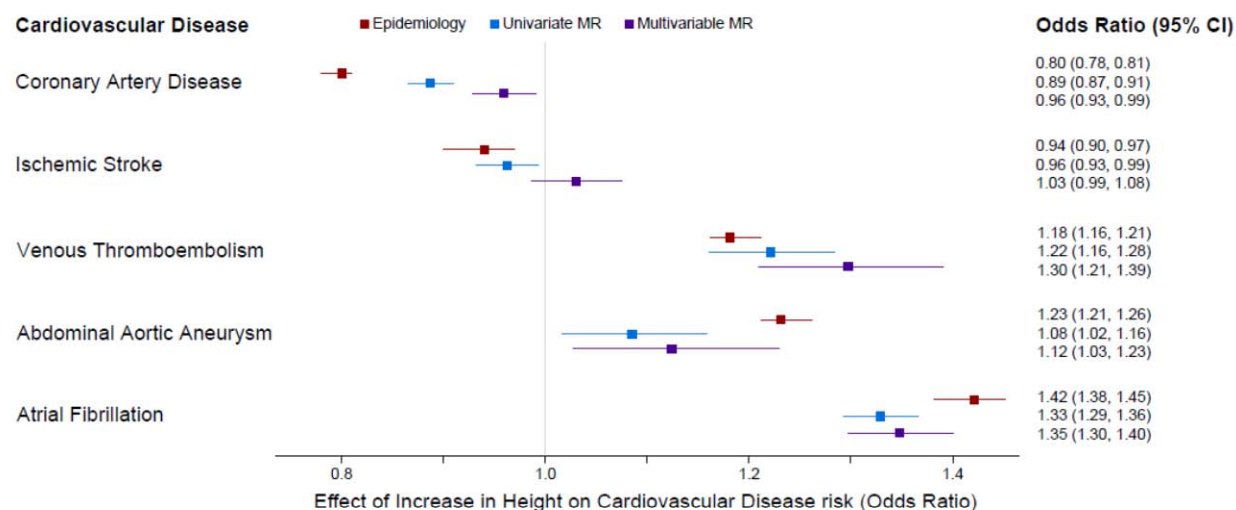
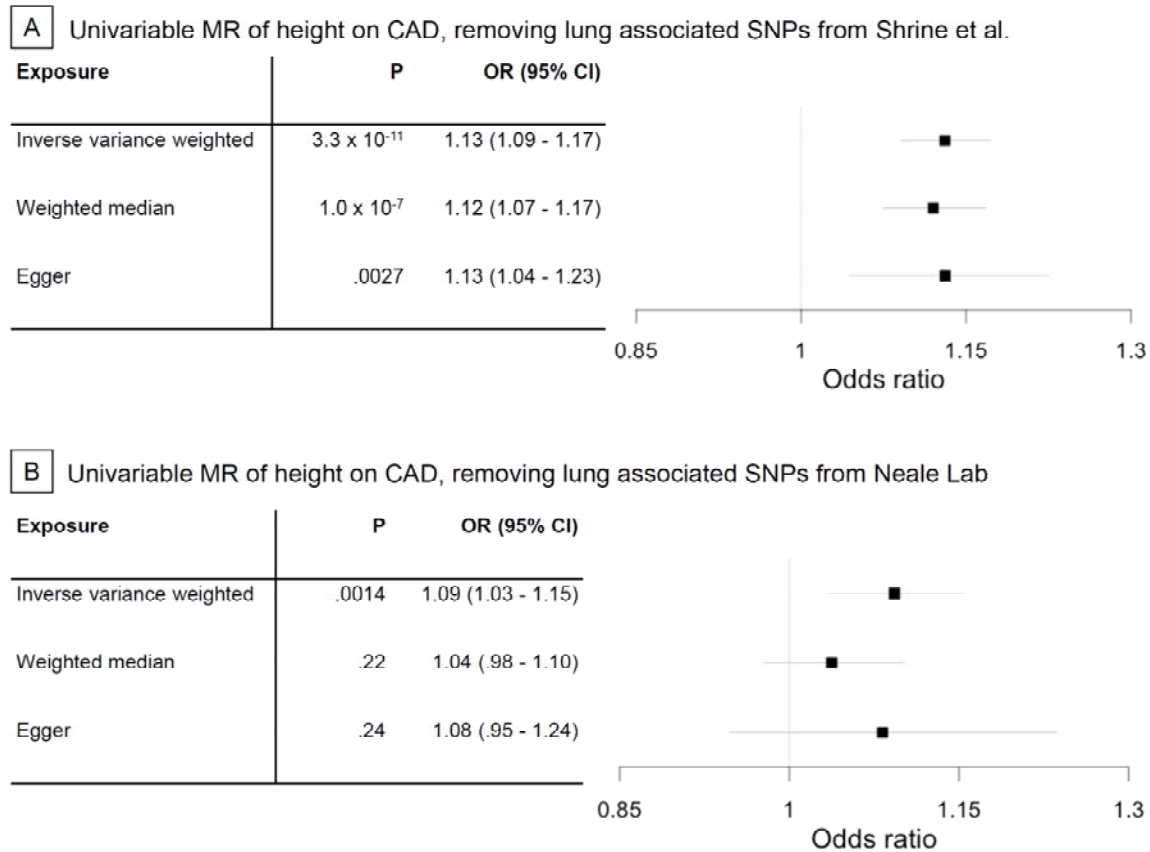


Figure 4. Effects of height on cardiovascular disease risks. Multivariable MR including 12 additional cardiovascular disease risk factors as exposures attenuates the effect of height on coronary artery disease risk and ischemic stroke, but does not impact the effects of height on venous thromboembolism, abdominal aortic aneurysm, or atrial fibrillation.

Supplementary Figures



Supplementary Figure 1. Univariable effect of 1-SD decrease in height on CAD risk after removing variants from set of height instruments that are nominally associated ($p < .05$) with lung function from GWAS conducted by a) Shrine et al. (N SNPs = 1,112) and b) Neale Lab (N SNPs = 747).