

# Mendelian randomization analyses reveal mediating factors of the causal effect of height on coronary artery disease

Daniel Hui,<sup>1</sup> Christopher S. Thom,<sup>2</sup> Kimberly Lorenz,<sup>3,4,5</sup> Scott M. Damrauer,<sup>4,6,7</sup> Themistocles L. Assimes,<sup>9,10</sup> Benjamin F. Voight<sup>3,4,5\*</sup>

## Affiliations:

<sup>1</sup> Graduate Program in Genomics and Computational Biology, University of Pennsylvania, Philadelphia, PA, USA

<sup>2</sup> Division of Neonatology, Children's Hospital of Philadelphia, Philadelphia, PA, USA

<sup>3</sup> Department of Systems Pharmacology and Translational Therapeutics, University of Pennsylvania, Philadelphia, PA, USA

<sup>4</sup> Department of Genetics, Perelman School of Medicine, University of Pennsylvania, Philadelphia, PA, USA

<sup>5</sup> Institute for Translational Medicine, Perelman School of Medicine, University of Pennsylvania, Philadelphia, PA, USA

<sup>6</sup> Corporal Michael Crescenz VA Medical Center, Philadelphia, PA 19104, USA

<sup>7</sup> Department of Surgery, Perelman School of Medicine, University of Pennsylvania, Philadelphia, PA 19104, USA.

<sup>9</sup> VA Palo Alto Health Care System, Palo Alto, CA, USA.

<sup>10</sup> Department of Medicine, Stanford University School of Medicine, Stanford, CA, USA.

## \*Correspondence to:

Benjamin F. Voight, PhD

University of Pennsylvania Perelman School of Medicine

Smilow Center for Translational Research, Room 10-126

3400 Civic Center Boulevard

Philadelphia, PA 19104

[bvoight@penmedicine.upenn.edu](mailto:bvoight@penmedicine.upenn.edu)

## **Abstract**

An inverse correlation between stature and risk of coronary artery disease (CAD) has been observed in several epidemiologic studies, and recent Mendelian randomization (MR) experiments have suggested evidence that this association may be causal. However, the extent to which the effect estimated by MR can be explained by established cardiovascular risk factors is unclear, with a recent report suggesting that lung function traits could fully explain the height-CAD effect. To clarify this relationship, we utilized the largest set of genetic instruments for human stature to date, comprising >2,000 genetic variants for height and CAD. In univariable analysis, we confirmed that a one standard deviation decrease in height (~6.5 cm) was associated with a 12.0% increase in the risk of CAD, consistent with previous reports. In multivariable analysis accounting for effects from up to 12 established risk factors, we observed a >3-fold attenuation in the causal effect of height on CAD susceptibility (3.7%,  $p = 2.1 \times 10^{-2}$ ). We observed minimal effects of lung function traits on CAD risk in our analyses, indicating that these traits are unlikely to explain the residual association between height and CAD risk. In sum, these results suggest that height does not add meaningful clinical impact on CAD risk prediction beyond established risk factors.

## **Introduction**

Epidemiological evidence suggests that shorter height is associated with an increased risk of coronary artery disease (CAD), even after adjustment for known risk factors such as smoking status, lipid levels, body mass index (BMI), systolic blood pressure, and alcohol consumption<sup>1,2,3</sup>. Mendelian randomization (MR) is a technique that can

estimate causal relationships between traits by using genetic variants and their corresponding effects identified and measured through large-scale genetic analyses such as genome-wide association studies (GWAS). Studies using Mendelian randomization have provided evidence for a univariable causal association between shorter stature and risk of CAD<sup>4,5</sup>, however, it is still unclear how much of this effect can be explained by established, conventional CAD risk factors. Notably, previous work has suggested that height's effect on CAD is nearly entirely mediated by lung function, specifically forced expiratory volume in 1 second (FEV1) and forced vital capacity (FVC)<sup>6</sup>. This finding is backed by epidemiological evidence<sup>7,8</sup>, but results from other published univariable MR analyses are inconclusive<sup>9</sup>.

Newly developed multivariable Mendelian randomization (MVMR) methods allow for the investigation of causal relationships between traits after accounting for additional possible mediating factors that may confound a primary association. Moreover, new association data sets for height and CAD allow for improved statistical power to infer, and account for, confounding effects. In what follows, we first reaffirm the univariable causal relationship between height and CAD risk using the most recent and largest GWAS for height and CAD. Next, we investigated the effects of these factors on height's effect on CAD risk using MVMR methods with GWAS for 12 established risk factors of CAD. Lastly, we investigated the role of lung function's effect on CAD risk using univariable and multivariable MR analyses, including repeating the exact procedures used in previous work with updated and legacy datasets.

## **Results**

A flowchart of the project is in Figure 1. We began by assembling GWAS data for height and CAD to perform MR experiments using the conventional “two-sample” design. We utilized the largest genetic studies to date for height and CAD, with mean sample size of 693,529 individuals per variant for height<sup>10</sup> and 122,733 CAD cases<sup>11</sup> (**S Table 1**). For height, additional low frequency (1-5% MAF) or rare (0.1-1% MAF) genome-wide significant SNPs with effects up to 2 cm/allele were also included<sup>12</sup>. After quality control and filtering (**Methods**), the final set of height instruments comprised of 2,037 variants, nearly two and a half times that of previous efforts<sup>6</sup> (**S Tables 2, 3**), explaining a theoretical 26.4% of the variance in height (**S Table 4**). The set of variants had a Cragg-Donald F-Statistic of 121.5<sup>13</sup> (based on the theoretical variance explained assuming Hardy-Weinberg equilibrium), indicating that issues of weak instrument bias should be minimal<sup>14,15</sup>.

### ***Genetically determined height is inversely associated with CAD risk***

We next utilized these summary statistics to conduct univariable, two-sample MR of height on CAD risk (**Methods**). Using the inverse-variance weighted (IVW) method, we observed that a one standard deviation (SD) decrease in height (~6.5cm)<sup>16</sup> was associated with a 12.0% increase in the risk of CAD (OR = 1.13, 95% CI = 1.10 - 1.16,  $p = 1.6 \times 10^{-20}$ , **Figure 2**), a result that was consistent with previous reports<sup>4-6</sup>. This effect had persistent and robust association in sensitivity MR analyses, including weighted median (WM) (OR = 1.12, 95% CI = 1.08 - 1.16,  $p = 4.2 \times 10^{-14}$ ) and MR-Egger (OR = 1.10, 95% CI = 1.04 - 1.17,  $p = 2.7 \times 10^{-4}$ ) as well as other approaches (**S Table 5**). We

further noted that the intercept estimated from MR-Egger was not significant, suggesting no direct statistical evidence supporting the presence of horizontal pleiotropy ( $p = 0.36$ ). Taken collectively, these results confirm the previously observed statistical effect of shorter stature with increased susceptibility to CAD. However, these results do not themselves address the extent to which height modulates CAD risk beyond the set of conventional established risk factors for CAD.

***Multivariable analysis substantially attenuates the association between genetically determined height and CAD risk***

We next sought to quantify the extent to which the catalog of established CAD risk factors could explain the association between lower stature and elevated risk of CAD. For this, we utilized multivariable Mendelian randomization (MVMR) to account for effects of 12 risk factors with established or compelling associations with CAD, including those related to plasma lipids (low-density lipoprotein cholesterol and triglycerides), blood pressure (systolic and diastolic), anthropometry (body mass index and waist-hip ratio), behavior (smoking initiation, alcohol use, and physical activity), glycemia (type 2 diabetes), or other traits (educational attainment and birth weight, **Methods**). After obtaining recent, large-scale GWAS for all traits<sup>10,17-24</sup>, 1,906 of our 2,037 (93.6%) of variants were present in GWAS summary data across all traits and were utilized for MVMR analysis (**S Table 6**). We note that a reanalysis of this slightly smaller ( $N$  variants = 1,906) instrument returned virtually identical results to the above univariable results (IVW OR = 1.13, CI= 1.09 – 1.16,  $p=4.7 \times 10^{-19}$ ). Furthermore, the Sanderson-Windmeijer F statistic of the model was 40.9, indicating low bias due to weak

instruments<sup>25</sup>. After including all 12 risk factors jointly with height, we observed that a one SD shorter stature was associated with a 3.7% increase in the risk of CAD (OR = 1.04, 95% CI = 1.0 – 1.07, P = 0.021, **Figure 2, S Table 7**), representing a 68% attenuation in the effect compared to univariable MR. These results indicate a small, but significant, residual effect of height on susceptibility to CAD after accounting for known risk factors.

We next quantified the effects of each risk factor individually to explore the risk factors attenuating the effects of height on CAD risk in more detail. These effects were considered independent of the effects observed when all risk factors were jointly analyzed. In a series of MVMR models for height with each risk factor separately, we observed that 9 risk factors reduced height's effect on CAD risk, ranging between 0.06 – 3.65% of the total effect (**S Table 8**), somewhat consistent with previous work reporting 1-3% attenuation in height effect for each risk factor<sup>6</sup>. In contrast, 3 risk factors (smoking initiation, physical activity, and waist-hip ratio) increased the effect of height on CAD susceptibility, between 0.09% – 1.03%. These results indicate that the attenuation of the effect of height of CAD in the full joint model is not entirely explained by a single factor, but instead by a combination of risk factors in aggregate.

### ***Lung function measures are not genetically causally associated with CAD susceptibility***

Recent work suggested that lung function measures are inversely associated with cardiovascular events<sup>7-9</sup>. Furthermore, Mendelian randomization analyses suggested that the bulk of the causal effect of height on CAD susceptibility is mediated through

FEV1 and FVC<sup>6</sup>. Given these reports, we next focused our efforts on (i) characterizing what relationship exists between these measures and CAD susceptibility, and (ii) if these measures could explain the residual putative causal effect estimated between height and CAD.

To develop sets of FEV1 and FVC genetic instruments and perform MVMR analyses, we utilized a large, recently published GWAS study for both traits<sup>26</sup>. After quality control and filtering analogous to what we applied to our height genetic instrument (**Methods**), the final sets of genetic variants comprised 171 for FEV1 and 128 for FVC, which explained a theoretical 3.26% and 2.32% of the genetic variance to each trait, respectively (**S Tables 9-12**). These sets of instruments had Cragg-Donald F-Statistics of 78.8 and 74.1, respectively, arguing against weak instrument bias<sup>13-15</sup>.

We then performed 5 sets of MR experiments to examine the effects of FEV1 and FVC, and their roles as attenuators of height's effect on susceptibility to CAD. Analyses were conducted using both univariable and multivariable methods, as well as recently published and legacy data sets. Collectively, we observed little attenuation of height's effect on CAD risk due to lung function factors, as well as scant univariable association between either lung function measure and CAD risk (**Figure 3, S tables 13-20**).

First, we performed univariable MR analysis for each lung function measure on CAD susceptibility (**Figure 3a**). We observed no significant effect of FEV1 on CAD risk using inverse-variance weighted, weighted median, or MR-Egger methods ( $p_{IVW} = .080$ ,  $p_{WM} = .78$ ,  $p_{Egger} = .44$ ). Effects were directionally inconsistent, with increased FEV1

increasing CAD risk by MR-Egger, and decreased FEV1 associated with decreased CAD risk by IVW and WM methods. For FVC, results were also insignificant, except for those from the IVW method ( $p_{IVW} = .034$ ,  $p_{WM} = .061$ ,  $p_{Egger} = .61$ ). However, these results were directionally consistent across methods, with decreased FVC associated with increased CAD risk, consistent with epidemiological evidence<sup>7,8</sup>.

Second, we performed MVMR with FEV1 and FVC, both with and without the previously described 12 risk factors using the same 1,906 variants as were used in MVMR analysis. After including FEV1 and FVC, we observed a virtually identical, attenuated association between decreased height and CAD susceptibility as we observed from our prior experiments considering those 12 established risk factors without FEV1 and FVC (OR = 1.04, 95% CI = 1.00 - 1.08,  $p = 0.024$ , **Figure 3b**). Neither FEV1 or FVC were associated with CAD susceptibility in this joint model ( $p_{FEV1} = 0.41$  and  $p_{FVC} = 0.39$ ). Similarly, when we excluded the 12 established risk factors and included only FEV1 and FVC as additional factors with height, we did not observe attenuation versus univariable height-CAD analysis (OR = 1.13, 95% CI = (1.09 - 1.16),  $p = 2.8 \times 10^{-18}$ , **Figure 3c**). Again, the effects for either lung function factor were mostly insignificant ( $p_{FEV1} = 0.39$  and  $p_{FVC} = 0.025$ ).

Third, we re-ran the MVMR analyses, but instead utilized the lung function GWAS considered in prior analyses that suggested a lung function mediation effect (**URLs**). Again, we did not observe substantial attenuation in height's effect on CAD risk, (OR = 1.04, 95% CI = 1.00 - 1.08,  $p = 0.014$ , **Figure 3d**). Additionally, when we modeled FEV1 and FVC exclusively with height, height's effect on CAD risk did not appear to be reduced by lung function (OR = 1.13, 95% CI = 1.09-1.16,  $p = 3.2 \times 10^{-17}$ ,



**Figure 3e**), although the effects for both lung function measures were nominally significant, if at all ( $p_{FEV1} = .026$  and  $p_{FVC} = .052$ )

Fourth, we created a restricted set of height genetic instruments that excluded variants nominally associated with FEV1 or FVC<sup>26</sup> ( $p < 0.05$ ) to more directly compare between results from the published work suggesting lung function's mediating effect on height<sup>6</sup>, and only retained variants present in lung function, height, and CAD GWAS. Of 2,037 SNPs in our original set of height instruments, 1,112 remained and were used in univariable MR experiments analyzing the effect of height on CAD. We continued to observe a robust association between decreased height and increased CAD risk. Estimated effects, using WM (OR = 1.12, CI = 1.07 - 1.17,  $p = 1.00 \times 10^{-7}$ ) and IVW methods (OR = 1.13, CI = 1.08-1.18,  $p = 3.33 \times 10^{-11}$ ), were similar to our previous univariable analyses (**S Figure 1a**), and the estimated effect from MR-Egger actually increased slightly (OR = 1.13, CI = 1.03-1.24,  $p = 2.70 \times 10^{-3}$ ).

Fifth, we filtered nominally associated FEV1 and FVC variants from our height IVs using older summary statistics for lung function (**URLs**) rather than Shrine et al<sup>26</sup>, leaving 747 variants. In this case, we do observe an attenuation of association for height on CAD risk, consistent with the previous reports<sup>5</sup> (**S Figure 1b**). Estimates of the effect of height on CAD risk also decreased (IVW estimate 12.0% to 8.9%,  $p = 1.6 \times 10^{-20}$  to  $p = 1.4 \times 10^{-3}$ ; WM estimate 11.3% to 3.7%,  $p = 4.2 \times 10^{-14}$  to  $p = 0.224$ ; MR-Egger estimate 9.8% to 7.9%,  $p = 2.7 \times 10^{-4}$  to  $p = 0.244$ ).

## **Discussion**

Using the largest GWAS to date, we recapitulated previous evidence that lower stature increases susceptibility to CAD, estimating a 12% increased CAD risk per 1 standard deviation unit decrease in height. This effect was substantially attenuated to 3.7% after accounting for a collection of 12 CAD risk factors, and we observed that individually these factors both attenuate and increase height's effect on CAD. In contrast with prior work, we demonstrate – through univariate and multivariable MR experiments directly – that lung function explains little, if any effect, of height on CAD susceptibility.

Several factors could be driving differences between our work and previously published findings of lung function on CAD risk. First, certain phenotype-specific covariates, namely height, were not included in the lung function GWAS results used in Marouli et al.<sup>6</sup> – by contrast, the (peer-reviewed) GWAS we used included height as a covariate in the models used for association testing. Given lung function and height are positively correlated both observationally and genetically, not accounting for height in the primary lung function GWAS may be expected to demonstrate that lung function GWAS results mediate the height GWAS (as the lung function GWAS may be measuring a significant portion of height signal directly). However, our MVMR experiments with height and both these traits rule this out, as effect estimates which are height-corrected (**Figure 3b**) or height-uncorrected (**Figure 3c**) return similarly unattenuated effect estimates of height on CAD.

We note that the procedure used in Marouli et al. where variants nominally associated (i.e.,  $p < .05$ ) with lung function were removed from the set of height instruments, inherently reduces power. This reduction could have influenced the

apparent attenuation of lung function on height's effect on CAD risk. However, we did not observe a similar attenuation when we replicated their procedure using newly available GWAS summary data. These findings occurred despite strong similarities between lung function GWAS size (Shrine et al. N=400,102 vs Neale Lab N=361,194) and high degree of sample overlap, with both GWAS being primarily conducted in the UK Biobank. The collection of these results provide evidence against the hypothesis that lung function substantially attenuates height's genetically causal effect on CAD risk. In contrast to rejecting a role for lung function as a causal mediator, we do show that inclusion of multiple established CAD risk factors substantially attenuate the relationship between height and CAD.

One exposure we considered in the multivariable analysis but did not include was high-density lipoprotein (HDL) cholesterol levels. While epidemiological evidence has suggested an inverse relationship between HDL and CAD risk<sup>27</sup>, randomized controlled trials and MR studies have largely not supported this relationship<sup>28,29</sup>, and newer evidence has suggested the role of HDL on CAD risk is nonlinear and/or context specific<sup>30</sup>. Moreover, HDL is correlated with triglyceride levels, which does have a growing body of evidence to support causality and which we did include in our multivariable analysis. Thus, we opted to not include HDL in these analyses.

How well these findings may translate to non-European ancestries remains unclear as our analyses were conducted almost exclusively in individuals of European descent<sup>32,33</sup>. Even within ancestry groups, stratification effects – such as population structure and stratification across Europe<sup>34</sup> – or context-specificity<sup>35</sup>, evident in BMI<sup>36,37</sup>,

may cause genetic effects to vary. Future work to explore differences in risk by ancestry would be an important consideration as such data become more readily available.

In conclusion, we quantify the effect of height in a multivariable context accounting for aggregated established risk factors, and observe that the majority of height's effect on CAD risk can be explained by these factors. Additionally, we provide evidence that lung function attenuates little of height's effect on CAD in contrast to recently published work through the use of more appropriate GWAS as well as multivariable methods. These findings help explain the clinical and epidemiological significance of height as a risk factor for CAD and other cardiovascular conditions. The clinical impact of this residual association remain unclear given adjustment of additional less conventional risk factors and biological pathways may lead to further erosion of this relationship in the future.

## **Methods**

### **Variants used as instruments for height**

We begin with the set of conditionally independent genome-wide significant ( $p < 5 \times 10^{-8}$ ) SNPs<sup>38</sup> from the largest height GWAS to date<sup>10</sup> as the starting point for the construction of our genetic instruments for height. For robustness across exposures without conditionally independent results, only SNPs with genome-wide significance in both the marginal and conditional analysis were retained. To this initial pool of SNPs, we included an additional set of low frequency (1% to 5% MAF) or rare (0.1 - 1% MAF) genome-wide significant associations for height SNPs<sup>12</sup>, where the SNP with lowest p-

value was retained in case of duplicates. Proxies for palindromic SNPs (i.e., variants with A/T or C/G alleles) with  $r^2 \geq 0.95$  were obtained from the primary height GWAS using 1000 Genomes EUR as LD reference (**S Table 3**)<sup>39,40</sup> – all variants were lifted over to hg19 (**URLs**). Finally, SNPs in networks of LD with  $r^2 > 0.05$  were pruned using a graph-based approach with a greedy approximation algorithm (**URLs**) using 1000 Genomes Phase 3 EUR as the LD reference. This filtering resulted in an overall set of instruments which included 2,041 genome-wide significantly associated, non-palindromic, statistically independent ( $r^2 < 0.05$ ) SNPs, including variants down to 0.1% allele frequency, nearly 2.5-fold more than previous efforts<sup>6</sup>. Of these 2,041 SNPs, 2,037 were present in the CAD GWAS and used in further analyses. Alleles and effect sizes were oriented to the height-increasing allele. This set of instruments had 80% power to detect an odds ratio of 1.018 at alpha .05 (**URLs**)<sup>40</sup>, assuming a CAD GWAS sample size of 547,261, case ratio of 0.224, and  $R^2$  of 0.264 in height using the height instruments.

### Mediation exposures

We obtained a collection of established risk factors for CAD from the literature to evaluate their role as potential mediators explaining the causal effect of height on CAD. Summary statistics from the largest GWAS to date were acquired for body mass index (BMI)<sup>10</sup>, plasma lipid levels (low density lipoprotein and triglycerides)<sup>17</sup>, systolic and diastolic blood pressure<sup>18</sup>, waist-hip ratio<sup>19</sup>, smoking initiation<sup>20</sup>, alcohol consumption (drinks per week<sup>20</sup>), educational attainment<sup>21</sup>, birth weight<sup>22</sup>, physical activity<sup>23</sup>, and type 2 diabetes<sup>24</sup>. Units for systolic blood pressure were converted to 5 mmHg from 1

mmHg<sup>18,42</sup>; the remaining GWAS were already expressed in units of standard deviations. For each trait, all alleles were harmonized to correspond to the height-increasing effect allele.

### Generation of additional instrument sets for FEV1 and FVC

GWAS summary statistics were obtained for FEV1 and FVC<sup>26</sup>. Lists of conditionally independent genome-wide significant lead variants were obtained from their respective GWAS, with palindromic SNPs and linkage disequilibrium addressed in an analogous way to the set of height instruments were filtered, as described above. 171 and 128 SNPs were included in the final set of instruments for FEV1 and FVC, respectively. Alleles and effect sizes were harmonized to the height-increasing effect allele.

### Mendelian randomization methods

Univariable two-sample Mendelian randomization analyses were carried out using the inverse-variance weighted, weighted median<sup>43</sup>, and MR-Egger<sup>44</sup> methods with the R package MendelianRandomization<sup>45</sup>. For completeness, we also present the results from eight additional methods (and note qualitatively similar results as to what we highlighted in the main text). In the univariable analysis, 2,037 of 2,041 SNPs for the height instrument were present in the CAD GWAS results and were used for analysis. Evidence of horizontal pleiotropy was evaluated using the intercept from MR-Egger.

Multivariable Mendelian randomization analysis was conducted using the R package WSpiller/MVMR<sup>25</sup>. Across all exposures, 1,906 SNPs of the 2,037 were present in every GWAS and were used for analysis.

### **Author Contributions**

S.M.D., T.L.A., and B.F.V. conceived of the project. D.H., K.L., and B.F.V. designed the experiments. D.H. curated the data and performed the analysis. D.H., C.T., and B.F.V. prepared the initial draft of the manuscript. All authors provided critical reviews and edits to the manuscript. B.F.V. supervised and administered all aspects of the work.

### **Acknowledgements**

For data from Klarin et al, approved dbGAP access to phs001672.v6.p1 was provided to B.F.V. (dbGAP project ID: 27398). The authors thank the Million Veteran Program (MVP) staff, researchers, and volunteers, who have contributed to MVP, and especially participants who previously served their country in the military and now generously agreed to enroll in the study (see <https://www.research.va.gov/mvp/> for more details). This research is based on data from the Million Veteran Program, Office of Research and Development, Veterans Health Administration, and was supported by the Veterans Administration (VA) Cooperative Studies Program (CSP) award #G002. B.F.V. acknowledges support from the National Institutes of Health (DK126194 and DK101478) and Linda Pechenik Montague Investigator Award. S.M.D. is supported by the U.S. Department of Veterans Affairs award IK2-CX001780. This publication does

not represent the views of the Department of Veterans Affairs or the United States Government.

### **Conflicting Interest Statement**

D.H., C.S.T., K.L., T.L.A., and B.F.V. have no conflicting interest to report. S.M.D receives research support from RenalytixAI and personal consulting fees from Calico Labs, outside the scope of the current research.

### **URLs**

UCSC Liftover: <https://genome.ucsc.edu/cgi-bin/hgLiftOver>

Select analysis code: [https://github.com/daniel-hui/Height-CAD\\_MVMR](https://github.com/daniel-hui/Height-CAD_MVMR)

Neale Lab UK Biobank GWAS results: <http://www.nealelab.is/uk-biobank>

MR power calculation: <https://shiny.cnsgenomics.com/mRnd>

### **References**

1. Hebert PR, Rich-Edwards JW, Manson JE, Ridker PM, Cook NR, O'Connor GT, Buring JE, Hennekens CH. Height and incidence of cardiovascular disease in male physicians. *Circulation*. 1993 Oct;88(4 Pt 1):1437-43. doi: 10.1161/01.cir.88.4.1437
2. Lee CM, Barzi F, Woodward M, Batty GD, Giles GG, Wong JW, Jamrozik K, Lam TH, Ueshima H, Kim HC, Gu DF, Schooling M, Huxley RR; Asia Pacific Cohort Studies Collaboration. Adult height and the risks of cardiovascular disease and



major causes of death in the Asia-Pacific region: 21,000 deaths in 510,000 men and women. *Int J Epidemiol*. 2009 Aug;38(4):1060-71. doi: 10.1093/ije/dyp150.

3. Pes GM, Ganau A, Tognotti E, Errigo A, Rocchi C, Dore MP. The association of adult height with the risk of cardiovascular disease and cancer in the population of Sardinia. *PLoS One*. 2018 Apr 20;13(4):e0190888. doi: 10.1371/journal.pone.0190888
4. Nelson CP, Hamby SE, Saleheen D, Hopewell JC, Zeng L, Assimes TL, Kanoni S, Willenborg C, Burgess S, Amouyel P, Anand S, Blankenberg S, Boehm BO, Clarke RJ, Collins R, Dedoussis G, Farrall M, Franks PW, Groop L, Hall AS, Hamsten A, Hengstenberg C, Hovingh GK, Ingelsson E, Kathiresan S, Kee F, König IR, Kooner J, Lehtimäki T, März W, McPherson R, Metspalu A, Nieminen MS, O'Donnell CJ, Palmer CN, Peters A, Perola M, Reilly MP, Ripatti S, Roberts R, Salomaa V, Shah SH, Schreiber S, Siegbahn A, Thorsteinsdottir U, Veronesi G, Wareham N, Willer CJ, Zalloua PA, Erdmann J, Deloukas P, Watkins H, Schunkert H, Danesh J, Thompson JR, Samani NJ; CARDIoGRAM+C4D Consortium. Genetically determined height and coronary artery disease. *N Engl J Med*. 2015 Apr 23;372(17):1608-18. doi: 10.1056/NEJMoa1404881.
5. Nüesch E, Dale C, Palmer TM, White J, Keating BJ, van Iperen EP, Goel A, Padmanabhan S, Asselbergs FW; EPIC-Netherland Investigators, Verschuren WM, Wijmenga C, Van der Schouw YT, Onland-Moret NC, Lange LA, Hovingh GK, Sivapalaratnam S, Morris RW, Whincup PH, Wannamethe GS, Gaunt TR, Ebrahim S, Steel L, Nair N, Reiner AP, Kooperberg C, Wilson JF, Bolton JL, McLachlan S, Price JF, Strachan MW, Robertson CM, Kleber ME, Delgado G, März W, Melander

O, Dominiczak AF, Farrall M, Watkins H, Leusink M, Maitland-van der Zee AH, de Groot MC, Dudbridge F, Hingorani A, Ben-Shlomo Y, Lawlor DA; UCLEB Investigators, Amuzu A, Caulfield M, Cavadino A, Cooper J, Davies TL; IN Day, Drenos F, Engmann J, Finan C, Giambartolomei C, Hardy R, Humphries SE, Hypponen E, Kivimaki M, Kuh D, Kumari M, Ong K, Plagnol V, Power C, Richards M, Shah S, Shah T, Sofat R, Talmud PJ, Wareham N, Warren H, Whittaker JC, Wong A, Zabaneh D, Davey Smith G, Wells JC, Leon DA, Holmes MV, Casas JP.

Adult height, coronary heart disease and stroke: a multi-locus Mendelian randomization meta-analysis. *Int J Epidemiol*. 2016 Dec 1;45(6):1927-1937. doi: 10.1093/ije/dyv074.

6. Marouli E, Del Greco MF, Astley CM, Yang J, Ahmad S, Berndt SI, Caulfield MJ, Evangelou E, McKnight B, Medina-Gomez C, van Vliet-Ostaptchouk JV, Warren HR, Zhu Z, Hirschhorn JN, Loos RJF, Kutalik Z, Deloukas P. Mendelian randomisation analyses find pulmonary factors mediate the effect of height on coronary artery disease. *Commun Biol*. 2019 Mar 27;2:119. doi: 10.1038/s42003-019-0361-2.
7. Lee HM, Liu MA, Barrett-Connor E, Wong ND. Association of lung function with coronary heart disease and cardiovascular disease outcomes in elderly: the Rancho Bernardo study. *Respir Med*. 2014 Dec;108(12):1779-85. doi: 10.1016/j.rmed.2014.09.016.
8. Chandra D, Gupta A, Fitzpatrick M, Haberlen SA, Neupane M, Leader JK, Kingsley LA, Kleerup E, Budoff MJ, Witt M, Sciurba FC, Post WS, Morris A. Lung Function, Coronary Artery Disease, and Mortality in HIV. *Ann Am Thorac Soc*. 2019 Jun;16(6):687-697.

9. Au Yeung SL, Borges MC, Lawlor DA. Association of Genetic Instrumental Variables for Lung Function on Coronary Artery Disease Risk: A 2-Sample Mendelian Randomization Study. *Circ Genom Precis Med*. 2018 Apr;11(4):e001952.
10. Yengo L, Sidorenko J, Kemper KE, Zheng Z, Wood AR, Weedon MN, Frayling TM, Hirschhorn J, Yang J, Visscher PM; GIANT Consortium. Meta-analysis of genome-wide association studies for height and body mass index in ~700000 individuals of European ancestry. *Hum Mol Genet*. 2018 Oct 15;27(20):3641-3649.
11. van der Harst P, Verweij N. Identification of 64 Novel Genetic Loci Provides an Expanded View on the Genetic Architecture of Coronary Artery Disease. *Circ Res*. 2018 Feb 2;122(3):433-443. doi: 10.1161/CIRCRESAHA.117.312086. Epub 2017 Dec 6.
12. Marouli E, Graff M, Medina-Gomez C, Lo KS, Wood AR, Kjaer TR, Fine RS, Lu Y, Schurmann C, Highland HM, Rieger S, Thorleifsson G, Justice AE, Lamparter D, Stirrups KE, Turcot V, Young KL, Winkler TW, Esko T, Karaderi T, Locke AE, Masca NG, Ng MC, Mudgal P, Rivas MA, Vedantam S, Mahajan A, Guo X, Abecasis G, Aben KK, Adair LS, Alam DS, Albrecht E, Allin KH, Allison M, Amouyel P, Appel EV, Arveiler D, Asselbergs FW, Auer PL, Balkau B, Banas B, Bang LE, Benn M, Bergmann S, Bielak LF, Blüher M, Boeing H, Boerwinkle E, Böger CA, Bonnycastle LL, Bork-Jensen J, Bots ML, Bottinger EP, Bowden DW, Brandslund I, Breen G, Brilliant MH, Broer L, Burt AA, Butterworth AS, Carey DJ, Caulfield MJ, Chambers JC, Chasman DI, Chen YI, Chowdhury R, Christensen C, Chu AY, Cocca M, Collins FS, Cook JP, Corley J, Galbany JC, Cox AJ, Cuellar-Partida G, Danesh J, Davies G, de Bakker PI, de Borst GJ, de Denus S, de Groot MC, de Mutsert R, Deary IJ,

Dedoussis G, Demerath EW, den Hollander AI, Dennis JG, Di Angelantonio E, Drenos F, Du M, Dunning AM, Easton DF, Ebeling T, Edwards TL, Ellinor PT, Elliott P, Evangelou E, Farmaki AE, Faul JD, Feitosa MF, Feng S, Ferrannini E, Ferrario MM, Ferrieres J, Florez JC, Ford I, Fornage M, Franks PW, Frikke-Schmidt R, Galesloot TE, Gan W, Gandin I, Gasparini P, Giedraitis V, Giri A, Girotto G, Gordon SD, Gordon-Larsen P, Gorski M, Grarup N, Grove ML, Gudnason V, Gustafsson S, Hansen T, Harris KM, Harris TB, Hattersley AT, Hayward C, He L, Heid IM, Heikkilä K, Helgeland Ø, Hernesniemi J, Hewitt AW, Hocking LJ, Hollensted M, Holmen OL, Hovingh GK, Howson JM, Hoyng CB, Huang PL, Hveem K, Ikram MA, Ingelsson E, Jackson AU, Jansson JH, Jarvik GP, Jensen GB, Jhun MA, Jia Y, Jiang X, Johansson S, Jørgensen ME, Jørgensen T, Jousilahti P, Jukema JW, Kahali B, Kahn RS, Kähönen M, Kamstrup PR, Kanoni S, Kaprio J, Karaleftheri M, Kardia SL, Karpe F, Kee F, Keeman R, Kiemeny LA, Kitajima H, Kluivers KB, Kocher T, Komulainen P, Kontto J, Kooner JS, Kooperberg C, Kovacs P, Kriebel J, Kuivaniemi H, Küry S, Kuusisto J, La Bianca M, Laakso M, Lakka TA, Lange EM, Lange LA, Langefeld CD, Langenberg C, Larson EB, Lee IT, Lehtimäki T, Lewis CE, Li H, Li J, Li-Gao R, Lin H, Lin LA, Lin X, Lind L, Lindström J, Linneberg A, Liu Y, Liu Y, Lophatananon A, Luan J, Lubitz SA, Lyytikäinen LP, Mackey DA, Madden PA, Manning AK, Männistö S, Marenne G, Marten J, Martin NG, Mazul AL, Meidtner K, Metspalu A, Mitchell P, Mohlke KL, Mook-Kanamori DO, Morgan A, Morris AD, Morris AP, Müller-Nurasyid M, Munroe PB, Nalls MA, Nauck M, Nelson CP, Neville M, Nielsen SF, Nikus K, Njølstad PR, Nordestgaard BG, Ntalla I, O'Connel JR, Oksa H, Loohuis LM, Ophoff RA, Owen KR, Packard CJ, Padmanabhan S, Palmer CN,

Pasterkamp G, Patel AP, Pattie A, Pedersen O, Peissig PL, Peloso GM, Pennell CE, Perola M, Perry JA, Perry JR, Person TN, Pirie A, Polasek O, Posthuma D, Raitakari OT, Rasheed A, Rauramaa R, Reilly DF, Reiner AP, Renström F, Ridker PM, Rioux JD, Robertson N, Robino A, Rolandsson O, Rudan I, Ruth KS, Saleheen D, Salomaa V, Samani NJ, Sadow K, Sapkota Y, Sattar N, Schmidt MK, Schreiner PJ, Schulze MB, Scott RA, Segura-Lepe MP, Shah S, Sim X, Sivapalaratnam S, Small KS, Smith AV, Smith JA, Southam L, Spector TD, Speliotes EK, Starr JM, Steinhorsdottir V, Stringham HM, Stumvoll M, Surendran P, 't Hart LM, Tansey KE, Tardif JC, Taylor KD, Teumer A, Thompson DJ, Thorsteinsdottir U, Thuesen BH, Tönjes A, Tromp G, Trompet S, Tsafantakis E, Tuomilehto J, Tybjaerg-Hansen A, Tyrer JP, Uher R, Uitterlinden AG, Ulivi S, van der Laan SW, Van Der Leij AR, van Duijn CM, van Schoor NM, van Setten J, Varbo A, Varga TV, Varma R, Edwards DR, Vermeulen SH, Vestergaard H, Vitart V, Vogt TF, Vozzi D, Walker M, Wang F, Wang CA, Wang S, Wang Y, Wareham NJ, Warren HR, Wessel J, Willems SM, Wilson JG, Witte DR, Woods MO, Wu Y, Yaghootkar H, Yao J, Yao P, Yerges-Armstrong LM, Young R, Zeggini E, Zhan X, Zhang W, Zhao JH, Zhao W, Zhao W, Zheng H, Zhou W; EPIC-InterAct Consortium; CHD Exome+ Consortium; ExomeBP Consortium; T2D-Genes Consortium; GoT2D Genes Consortium; Global Lipids Genetics Consortium; ReproGen Consortium; MAGIC Investigators, Rotter JI, Boehnke M, Kathiresan S, McCarthy MI, Willer CJ, Stefansson K, Borecki IB, Liu DJ, North KE, Heard-Costa NL, Pers TH, Lindgren CM, Oxvig C, Kutalik Z, Rivadeneira F, Loos RJ, Frayling TM, Hirschhorn JN, Deloukas P, Lettre G. Rare and low-

- frequency coding variants alter human adult height. *Nature*. 2017 Feb 9;542(7640):186-190. doi: 10.1038/nature21039.
13. Burgess S, Thompson SG; CRP CHD Genetics Collaboration. Avoiding bias from weak instruments in Mendelian randomization studies. *Int J Epidemiol*. 2011 Jun;40(3):755-64. doi: 10.1093/ije/dyr036. Epub 2011 Mar 16.
  14. James H Stock, Jonathan H Wright & Motohiro Yogo (2002) A Survey of Weak Instruments and Weak Identification in Generalized Method of Moments, *Journal of Business & Economic Statistics*, 20:4, 518-529
  15. Baum CF, Schaffer ME, Stillman S. Enhanced Routines for Instrumental Variables/Generalized Method of Moments Estimation and Testing. *The Stata Journal*. 2007;7(4):465-506.
  16. Berg JJ, Harpak A, Sinnott-Armstrong N, Joergensen AM, Mostafavi H, Field Y, Boyle EA, Zhang X, Racimo F, Pritchard JK, Coop G. Reduced signal for polygenic adaptation of height in UK Biobank. *Elife*. 2019 Mar 21;8:e39725. doi: 10.7554/eLife.39725.
  17. Klarin D, Damrauer SM, Cho K, Sun YV, Teslovich TM, Honerlaw J, Gagnon DR, DuVall SL, Li J, Peloso GM, Chaffin M, Small AM, Huang J, Tang H, Lynch JA, Ho YL, Liu DJ, Emdin CA, Li AH, Huffman JE, Lee JS, Natarajan P, Chowdhury R, Saleheen D, Vujkovic M, Baras A, Pyarajan S, Di Angelantonio E, Neale BM, Naheed A, Khera AV, Danesh J, Chang KM, Abecasis G, Willer C, Dewey FE, Carey DJ; Global Lipids Genetics Consortium; Myocardial Infarction Genetics (MIGen) Consortium; Geisinger-Regeneron DiscovEHR Collaboration; VA Million Veteran Program, Concato J, Gaziano JM, O'Donnell CJ, Tsao PS, Kathiresan S, Rader DJ,

Wilson PWF, Assimes TL. Genetics of blood lipids among ~300,000 multi-ethnic participants of the Million Veteran Program. *Nat Genet.* 2018 Nov;50(11):1514-1523.

18. Evangelou E, Warren HR, Mosen-Ansorena D, Mifsud B, Pazoki R, Gao H, Ntritsos G, Dimou N, Cabrera CP, Karaman I, Ng FL, Evangelou M, Witkowska K, Tzani E, Hellwege JN, Giri A, Velez Edwards DR, Sun YV, Cho K, Gaziano JM, Wilson PWF, Tsao PS, Kovesdy CP, Esko T, Mägi R, Milani L, Almgren P, Boutin T, Debette S, Ding J, Giulianini F, Holliday EG, Jackson AU, Li-Gao R, Lin WY, Luan J, Mangino M, Oldmeadow C, Prins BP, Qian Y, Sargurupremraj M, Shah N, Surendran P, Thériault S, Verweij N, Willems SM, Zhao JH, Amouyel P, Connell J, de Mutsert R, Doney ASF, Farrall M, Menni C, Morris AD, Noordam R, Paré G, Poulter NR, Shields DC, Stanton A, Thom S, Abecasis G, Amin N, Arking DE, Ayers KL, Barbieri CM, Batini C, Bis JC, Blake T, Bochud M, Boehnke M, Boerwinkle E, Boomsma DI, Bottinger EP, Braund PS, Brumat M, Campbell A, Campbell H, Chakravarti A, Chambers JC, Chauhan G, Ciullo M, Cocca M, Collins F, Cordell HJ, Davies G, de Borst MH, de Geus EJ, Deary IJ, Deelen J, Del Greco M F, Demirkale CY, Dörr M, Ehret GB, Elosua R, Enroth S, Erzurumluoglu AM, Ferreira T, Frånberg M, Franco OH, Gandin I, Gasparini P, Giedraitis V, Gieger C, Grotto G, Goel A, Gow AJ, Gudnason V, Guo X, Gyllenstein U, Hamsten A, Harris TB, Harris SE, Hartman CA, Havulinna AS, Hicks AA, Hofer E, Hofman A, Hottenga JJ, Huffman JE, Hwang SJ, Ingelsson E, James A, Jansen R, Jarvelin MR, Joehanes R, Johansson Å, Johnson AD, Joshi PK, Jousilahti P, Jukema JW, Jula A, Kähönen M, Kathiresan S, Keavney BD, Khaw KT, Knekt P, Knight J, Kolcic I, Kooner JS, Koskinen S, Kristiansson K, Kutalik Z, Laan M, Larson M, Launer LJ, Lehne B, Lehtimäki T, Liewald DCM, Lin L,

- Lind L, Lindgren CM, Liu Y, Loos RJF, Lopez LM, Lu Y, Lyytikäinen LP, Mahajan A, Mamasoula C, Marrugat J, Marten J, Milaneschi Y, Morgan A, Morris AP, Morrison AC, Munson PJ, Nalls MA, Nandakumar P, Nelson CP, Niiranen T, Nolte IM, Nutile T, Oldehinkel AJ, Oostra BA, O'Reilly PF, Org E, Padmanabhan S, Palmas W, Palotie A, Pattie A, Penninx BWJH, Perola M, Peters A, Polasek O, Pramstaller PP, Nguyen QT, Raitakari OT, Ren M, Rettig R, Rice K, Ridker PM, Ried JS, Riese H, Ripatti S, Robino A, Rose LM, Rotter JI, Rudan I, Ruggiero D, Saba Y, Sala CF, Salomaa V, Samani NJ, Sarin AP, Schmidt R, Schmidt H, Shrine N, Siscovick D, Smith AV, Snieder H, Söber S, Sorice R, Starr JM, Stott DJ, Strachan DP, Strawbridge RJ, Sundström J, Swertz MA, Taylor KD, Teumer A, Tobin MD, Tomaszewski M, Toniolo D, Traglia M, Trompet S, Tuomilehto J, Tzourio C, Uitterlinden AG, Vaez A, van der Most PJ, van Duijn CM, Vergnaud AC, Verwoert GC, Vitart V, Völker U, Vollenweider P, Vuckovic D, Watkins H, Wild SH, Willemssen G, Wilson JF, Wright AF, Yao J, Zemunik T, Zhang W, Attia JR, Butterworth AS, Chasman DI, Conen D, Cucca F, Danesh J, Hayward C, Howson JMM, Laakso M, Lakatta EG, Langenberg C, Melander O, Mook-Kanamori DO, Palmer CNA, Risch L, Scott RA, Scott RJ, Sever P, Spector TD, van der Harst P, Wareham NJ, Zeggini E, Levy D, Munroe PB, Newton-Cheh C, Brown MJ, Metspalu A, Hung AM, O'Donnell CJ, Edwards TL, Psaty BM, Tzoulaki I, Barnes MR, Wain LV, Elliott P, Caulfield MJ; Million Veteran Program. Genetic analysis of over 1 million people identifies 535 new loci associated with blood pressure traits. *Nat Genet.* 2018 Oct;50(10):1412-1425.
19. Shungin D, Winkler TW, Croteau-Chonka DC, Ferreira T, Locke AE, Mägi R, Strawbridge RJ, Pers TH, Fischer K, Justice AE, Workalemahu T, Wu JMW,



Buchkovich ML, Heard-Costa NL, Roman TS, Drong AW, Song C, Gustafsson S, Day FR, Esko T, Fall T, Kutalik Z, Luan J, Randall JC, Scherag A, Vedantam S, Wood AR, Chen J, Fehrmann R, Karjalainen J, Kahali B, Liu CT, Schmidt EM, Absher D, Amin N, Anderson D, Beekman M, Bragg-Gresham JL, Buyske S, Demirkan A, Ehret GB, Feitosa MF, Goel A, Jackson AU, Johnson T, Kleber ME, Kristiansson K, Mangino M, Leach IM, Medina-Gomez C, Palmer CD, Pasko D, Pechlivanis S, Peters MJ, Prokopenko I, Stančáková A, Sung YJ, Tanaka T, Teumer A, Van Vliet-Ostaptchouk JV, Yengo L, Zhang W, Albrecht E, Ärnlöv J, Arscott GM, Bandinelli S, Barrett A, Bellis C, Bennett AJ, Berne C, Blüher M, Böhringer S, Bonnet F, Böttcher Y, Bruinenberg M, Carba DB, Caspersen IH, Clarke R, Daw EW, Deelen J, Deelman E, Delgado G, Doney AS, Eklund N, Erdos MR, Estrada K, Eury E, Friedrich N, Garcia ME, Giedraitis V, Gigante B, Go AS, Golay A, Grallert H, Grammer TB, Gräßler J, Grewal J, Groves CJ, Haller T, Hallmans G, Hartman CA, Hassinen M, Hayward C, Heikkilä K, Herzig KH, Helmer Q, Hillege HL, Holmen O, Hunt SC, Isaacs A, Ittermann T, James AL, Johansson I, Juliusdottir T, Kalafati IP, Kinnunen L, Koenig W, Kooner IK, Kratzer W, Lamina C, Leander K, Lee NR, Lichtner P, Lind L, Lindström J, Lobbens S, Lorentzon M, Mach F, Magnusson PK, Mahajan A, McArdle WL, Menni C, Merger S, Mihailov E, Milani L, Mills R, Moayyeri A, Monda KL, Mooijaart SP, Mühleisen TW, Mulas A, Müller G, Müller-Nurasyid M, Nagaraja R, Nalls MA, Narisu N, Glorioso N, Nolte IM, Olden M, Rayner NW, Renstrom F, Ried JS, Robertson NR, Rose LM, Sanna S, Scharnagl H, Scholtens S, Sennblad B, Seufferlein T, Sitlani CM, Smith AV, Stirrups K, Stringham HM, Sundström J, Swertz MA, Swift AJ, Syvänen AC, Tayo BO, Thorand B, Thorleifsson

G, Tomaschitz A, Troffa C, van Oort FV, Verweij N, Vonk JM, Waite LL, Wennauer R, Wilsgaard T, Wojczynski MK, Wong A, Zhang Q, Zhao JH, Brennan EP, Choi M, Eriksson P, Folkersen L, Franco-Cereceda A, Gharavi AG, Hedman ÅK, Hivert MF, Huang J, Kanoni S, Karpe F, Keildson S, Kiryluk K, Liang L, Lifton RP, Ma B, McKnight AJ, McPherson R, Metspalu A, Min JL, Moffatt MF, Montgomery GW, Murabito JM, Nicholson G, Nyholt DR, Olsson C, Perry JR, Reinmaa E, Salem RM, Sandholm N, Schadt EE, Scott RA, Stolk L, Vallejo EE, Westra HJ, Zondervan KT; ADIPOGen Consortium; CARDIOGRAMplusC4D Consortium; CKDGen Consortium; GEFOS Consortium; GENIE Consortium; GLGC; ICBP; International Endogene Consortium; LifeLines Cohort Study; MAGIC Investigators; MuTHER Consortium; PAGE Consortium; ReproGen Consortium, Amouyel P, Arveiler D, Bakker SJ, Beilby J, Bergman RN, Blangero J, Brown MJ, Burnier M, Campbell H, Chakravarti A, Chines PS, Claudi-Boehm S, Collins FS, Crawford DC, Danesh J, de Faire U, de Geus EJ, Dörr M, Erbel R, Eriksson JG, Farrall M, Ferrannini E, Ferrières J, Forouhi NG, Forrester T, Franco OH, Gansevoort RT, Gieger C, Gudnason V, Haiman CA, Harris TB, Hattersley AT, Heliövaara M, Hicks AA, Hingorani AD, Hoffmann W, Hofman A, Homuth G, Humphries SE, Hyppönen E, Illig T, Jarvelin MR, Johansen B, Jousilahti P, Jula AM, Kaprio J, Kee F, Keinanen-Kiukkaanniemi SM, Kooner JS, Kooperberg C, Kovacs P, Kraja AT, Kumari M, Kuulasmaa K, Kuusisto J, Lakka TA, Langenberg C, Le Marchand L, Lehtimäki T, Lyssenko V, Männistö S, Marette A, Matise TC, McKenzie CA, McKnight B, Musk AW, Möhlenkamp S, Morris AD, Nelis M, Ohlsson C, Oldehinkel AJ, Ong KK, Palmer LJ, Penninx BW, Peters A, Pramstaller PP, Raitakari OT, Rankinen T, Rao DC, Rice TK, Ridker PM, Ritchie

MD, Rudan I, Salomaa V, Samani NJ, Saramies J, Sarzynski MA, Schwarz PE, Shuldiner AR, Staessen JA, Steinthorsdottir V, Stolk RP, Strauch K, Tönjes A, Tremblay A, Tremoli E, Vohl MC, Völker U, Vollenweider P, Wilson JF, Witteman JC, Adair LS, Bochud M, Boehm BO, Bornstein SR, Bouchard C, Cauchi S, Caulfield MJ, Chambers JC, Chasman DI, Cooper RS, Dedoussis G, Ferrucci L, Froguel P, Grabe HJ, Hamsten A, Hui J, Hveem K, Jöckel KH, Kivimaki M, Kuh D, Laakso M, Liu Y, März W, Munroe PB, Njølstad I, Oostra BA, Palmer CN, Pedersen NL, Perola M, Pérusse L, Peters U, Power C, Quertermous T, Rauramaa R, Rivadeneira F, Saaristo TE, Saleheen D, Sinisalo J, Slagboom PE, Snieder H, Spector TD, Stefansson K, Stumvoll M, Tuomilehto J, Uitterlinden AG, Uusitupa M, van der Harst P, Veronesi G, Walker M, Wareham NJ, Watkins H, Wichmann HE, Abecasis GR, Assimes TL, Berndt SI, Boehnke M, Borecki IB, Deloukas P, Franke L, Frayling TM, Groop LC, Hunter DJ, Kaplan RC, O'Connell JR, Qi L, Schlessinger D, Strachan DP, Thorsteinsdottir U, van Duijn CM, Willer CJ, Visscher PM, Yang J, Hirschhorn JN, Zillikens MC, McCarthy MI, Speliotes EK, North KE, Fox CS, Barroso I, Franks PW, Ingelsson E, Heid IM, Loos RJ, Cupples LA, Morris AP, Lindgren CM, Mohlke KL. New genetic loci link adipose and insulin biology to body fat distribution. *Nature*. 2015 Feb 12;518(7538):187-196.

20. Liu M, Jiang Y, Wedow R, Li Y, Brazel DM, Chen F, Datta G, Davila-Velderrain J, McGuire D, Tian C, Zhan X; 23andMe Research Team; HUNT All-In Psychiatry, Choquet H, Docherty AR, Faul JD, Foerster JR, Fritsche LG, Gabrielsen ME, Gordon SD, Haessler J, Hottenga JJ, Huang H, Jang SK, Jansen PR, Ling Y, Mägi R, Matoba N, McMahon G, Mulas A, Orrù V, Palviainen T, Pandit A, Reginsson GW,

Skogholt AH, Smith JA, Taylor AE, Turman C, Willemsen G, Young H, Young KA, Zajac GJM, Zhao W, Zhou W, Bjornsdottir G, Boardman JD, Boehnke M, Boomsma DI, Chen C, Cucca F, Davies GE, Eaton CB, Ehringer MA, Esko T, Fiorillo E, Gillespie NA, Gudbjartsson DF, Haller T, Harris KM, Heath AC, Hewitt JK, Hickie IB, Hokanson JE, Hopfer CJ, Hunter DJ, Iacono WG, Johnson EO, Kamatani Y, Kardina SLR, Keller MC, Kellis M, Kooperberg C, Kraft P, Krauter KS, Laakso M, Lind PA, Loukola A, Lutz SM, Madden PAF, Martin NG, McGue M, McQueen MB, Medland SE, Metspalu A, Mohlke KL, Nielsen JB, Okada Y, Peters U, Polderman TJC, Posthuma D, Reiner AP, Rice JP, Rimm E, Rose RJ, Runarsdottir V, Stallings MC, Stančáková A, Stefansson H, Thai KK, Tindle HA, Tyrfingsson T, Wall TL, Weir DR, Weisner C, Whitfield JB, Winsvold BS, Yin J, Zuccolo L, Bierut LJ, Hveem K, Lee JJ, Munafò MR, Saccone NL, Willer CJ, Cornelis MC, David SP, Hinds DA, Jorgenson E, Kaprio J, Stitzel JA, Stefansson K, Thorgeirsson TE, Abecasis G, Liu DJ, Vrieze S. Association studies of up to 1.2 million individuals yield new insights into the genetic etiology of tobacco and alcohol use. *Nat Genet.* 2019 Feb;51(2):237-244.

21. Lee JJ, Wedow R, Okbay A, Kong E, Maghzian O, Zacher M, Nguyen-Viet TA, Bowers P, Sidorenko J, Karlsson Linnér R, Fontana MA, Kundu T, Lee C, Li H, Li R, Royer R, Timshel PN, Walters RK, Willoughby EA, Yengo L; 23andMe Research Team; COGENT (Cognitive Genomics Consortium); Social Science Genetic Association Consortium, Alver M, Bao Y, Clark DW, Day FR, Furlotte NA, Joshi PK, Kemper KE, Kleinman A, Langenberg C, Mägi R, Trampush JW, Verma SS, Wu Y, Lam M, Zhao JH, Zheng Z, Boardman JD, Campbell H, Freese J, Harris KM, Hayward C, Herd P, Kumari M, Lencz T, Luan J, Malhotra AK, Metspalu A, Milani L,

Ong KK, Perry JRB, Porteous DJ, Ritchie MD, Smart MC, Smith BH, Tung JY, Wareham NJ, Wilson JF, Beauchamp JP, Conley DC, Esko T, Lehrer SF, Magnusson PKE, Oskarsson S, Pers TH, Robinson MR, Thom K, Watson C, Chabris CF, Meyer MN, Laibson DI, Yang J, Johannesson M, Koellinger PD, Turley P, Visscher PM, Benjamin DJ, Cesarini D. Gene discovery and polygenic prediction from a genome-wide association study of educational attainment in 1.1 million individuals. *Nat Genet.* 2018 Jul 23;50(8):1112-1121.

22. Warrington NM, Beaumont RN, Horikoshi M, Day FR, Helgeland Ø, Laurin C, Bacelis J, Peng S, Hao K, Feenstra B, Wood AR, Mahajan A, Tyrrell J, Robertson NR, Rayner NW, Qiao Z, Moen GH, Vaudel M, Marsit CJ, Chen J, Nodzenski M, Schnurr TM, Zafarmand MH, Bradfield JP, Grarup N, Kooijman MN, Li-Gao R, Geller F, Ahluwalia TS, Paternoster L, Rueedi R, Huikari V, Hottenga JJ, Lyytikäinen LP, Cavadino A, Metrustry S, Cousminer DL, Wu Y, Thiering E, Wang CA, Have CT, Vilor-Tejedor N, Joshi PK, Painter JN, Ntalla I, Myhre R, Pitkänen N, van Leeuwen EM, Joro R, Lagou V, Richmond RC, Espinosa A, Barton SJ, Inskip HM, Holloway JW, Santa-Marina L, Estivill X, Ang W, Marsh JA, Reichetzeder C, Marullo L, Hoher B, Lunetta KL, Murabito JM, Relton CL, Kogevinas M, Chatzi L, Allard C, Bouchard L, Hivert MF, Zhang G, Muglia LJ, Heikkinen J; EGG Consortium, Morgen CS, van Kampen AHC, van Schaik BDC, Mentch FD, Langenberg C, Luan J, Scott RA, Zhao JH, Hemani G, Ring SM, Bennett AJ, Gaulton KJ, Fernandez-Tajes J, van Zuydam NR, Medina-Gomez C, de Haan HG, Rosendaal FR, Kutalik Z, Marques-Vidal P, Das S, Willemsen G, Mbarek H, Müller-Nurasyid M, Standl M, Appel EVR, Fonvig CE, Trier C, van Beijsterveldt CEM, Murcia M, Bustamante M, Bonas-Guarch S,

Hougaard DM, Mercader JM, Linneberg A, Schraut KE, Lind PA, Medland SE, Shields BM, Knight BA, Chai JF, Panoutsopoulou K, Bartels M, Sánchez F, Stokholm J, Torrents D, Vinding RK, Willems SM, Atalay M, Chawes BL, Kovacs P, Prokopenko I, Tuke MA, Yaghootkar H, Ruth KS, Jones SE, Loh PR, Murray A, Weedon MN, Tönjes A, Stumvoll M, Michaelsen KF, Eloranta AM, Lakka TA, van Duijn CM, Kiess W, Körner A, Niinikoski H, Pakkala K, Raitakari OT, Jacobsson B, Zeggini E, Dedoussis GV, Teo YY, Saw SM, Montgomery GW, Campbell H, Wilson JF, Vrijkotte TGM, Vrijheid M, de Geus EJC, Hayes MG, Kadarmideen HN, Holm JC, Beilin LJ, Pennell CE, Heinrich J, Adair LS, Borja JB, Mohlke KL, Eriksson JG, Widén EE, Hattersley AT, Spector TD, Kähönen M, Viikari JS, Lehtimäki T, Boomsma DI, Sebert S, Vollenweider P, Sørensen TIA, Bisgaard H, Bønnelykke K, Murray JC, Melbye M, Nohr EA, Mook-Kanamori DO, Rivadeneira F, Hofman A, Felix JF, Jaddoe VWV, Hansen T, Pisinger C, Vaag AA, Pedersen O, Uitterlinden AG, Järvelin MR, Power C, Hyppönen E, Scholtens DM, Lowe WL Jr, Davey Smith G, Timpson NJ, Morris AP, Wareham NJ, Hakonarson H, Grant SFA, Frayling TM, Lawlor DA, Njølstad PR, Johansson S, Ong KK, McCarthy MI, Perry JRB, Evans DM, Freathy RM. Maternal and fetal genetic effects on birth weight and their relevance to cardio-metabolic risk factors. *Nat Genet.* 2019 May;51(5):804-814. doi: 10.1038/s41588-019-0403-1.

23. Doherty A, Smith-Byrne K, Ferreira T, Holmes MV, Holmes C, Pulit SL, Lindgren CM. GWAS identifies 14 loci for device-measured physical activity and sleep duration. *Nat Commun.* 2018 Dec 10;9(1):5257.

24. Mahajan A, Taliun D, Thurner M, Robertson NR, Torres JM, Rayner NW, Payne AJ, Steinhorsdottir V, Scott RA, Grarup N, Cook JP, Schmidt EM, Wuttke M, Sarnowski C, Mägi R, Nano J, Gieger C, Trompet S, Lecoeur C, Preuss MH, Prins BP, Guo X, Bielak LF, Below JE, Bowden DW, Chambers JC, Kim YJ, Ng MCY, Petty LE, Sim X, Zhang W, Bennett AJ, Bork-Jensen J, Brummett CM, Canouil M, Ec Kardt KU, Fischer K, Kardia SLR, Kronenberg F, Läll K, Liu CT, Locke AE, Luan J, Ntalla I, Nylander V, Schönherr S, Schurmann C, Yengo L, Bottinger EP, Brandslund I, Christensen C, Dedoussis G, Florez JC, Ford I, Franco OH, Frayling TM, Giedraitis V, Hackinger S, Hattersley AT, Herder C, Ikram MA, Ingelsson M, Jørgensen ME, Jørgensen T, Kriebel J, Kuusisto J, Ligthart S, Lindgren CM, Linneberg A, Lyssenko V, Mamakou V, Meitinger T, Mohlke KL, Morris AD, Nadkarni G, Pankow JS, Peters A, Sattar N, Stančáková A, Strauch K, Taylor KD, Thorand B, Thorleifsson G, Thorsteinsdottir U, Tuomilehto J, Witte DR, Dupuis J, Peyser PA, Zeggini E, Loos RJF, Froguel P, Ingelsson E, Lind L, Groop L, Laakso M, Collins FS, Jukema JW, Palmer CNA, Grallert H, Metspalu A, Dehghan A, Köttgen A, Abecasis GR, Meigs JB, Rotter JI, Marchini J, Pedersen O, Hansen T, Langenberg C, Wareham NJ, Stefansson K, Gloyn AL, Morris AP, Boehnke M, McCarthy MI. Fine-mapping type 2 diabetes loci to single-variant resolution using high-density imputation and islet-specific epigenome maps. *Nat Genet.* 2018 Nov;50(11):1505-1513.
25. Sanderson E, Davey Smith G, Windmeijer F, Bowden J. An examination of multivariable Mendelian randomization in the single-sample and two-sample summary data settings. *Int J Epidemiol.* 2019 Jun 1;48(3):713-727. doi: 10.1093/ije/dyy262. Erratum in: *Int J Epidemiol.* 2020 Jun 1;49(3):1057.

26. Shrine N, Guyatt AL, Erzurumluoglu AM, Jackson VE, Hobbs BD, Melbourne CA, Batini C, Fawcett KA, Song K, Sakornsakolpat P, Li X, Boxall R, Reeve NF, Obeidat M, Zhao JH, Wielscher M, Weiss S, Kentistou KA, Cook JP, Sun BB, Zhou J, Hui J, Karrasch S, Imboden M, Harris SE, Marten J, Enroth S, Kerr SM, Surakka I, Vitart V, Lehtimäki T, Allen RJ, Bakke PS, Beaty TH, Bleecker ER, Bossé Y, Brandsma CA, Chen Z, Crapo JD, Danesh J, DeMeo DL, Dudbridge F, Ewert R, Gieger C, Gulsvik A, Hansell AL, Hao K, Hoffman JD, Hokanson JE, Homuth G, Joshi PK, Joubert P, Langenberg C, Li X, Li L, Lin K, Lind L, Locantore N, Luan J, Mahajan A, Maranville JC, Murray A, Nickle DC, Packer R, Parker MM, Paynton ML, Porteous DJ, Prokopenko D, Qiao D, Rawal R, Runz H, Sayers I, Sin DD, Smith BH, Soler Artigas M, Sparrow D, Tal-Singer R, Timmers PRHJ, Van den Berge M, Whittaker JC, Woodruff PG, Yerges-Armstrong LM, Troyanskaya OG, Raitakari OT, Kähönen M, Polašek O, Gyllenstein U, Rudan I, Deary IJ, Probst-Hensch NM, Schulz H, James AL, Wilson JF, Stubbe B, Zeggini E, Jarvelin MR, Wareham N, Silverman EK, Hayward C, Morris AP, Butterworth AS, Scott RA, Walters RG, Meyers DA, Cho MH, Strachan DP, Hall IP, Tobin MD, Wain LV; Understanding Society Scientific Group. New genetic signals for lung function highlight pathways and chronic obstructive pulmonary disease associations across multiple ancestries. *Nat Genet.* 2019 Mar;51(3):481-493. doi: 10.1038/s41588-018-0321-7. Epub 2019 Feb 25. Erratum in: *Nat Genet.* 2019 Jun;51(6):1067.
27. Toth PP. High-density lipoprotein and cardiovascular risk. *Circulation.* 2004 Apr 20;109(15):1809-12.



28. Landmesser U, Hazen S. HDL-cholesterol, genetics, and coronary artery disease: the myth of the 'good cholesterol'? Eur Heart J. 2018 Jun 14;39(23):2179-2182.
29. Voight BF, Peloso GM, Orho-Melander M, Frikke-Schmidt R, Barbalic M, Jensen MK, Hindy G, Hólm H, Ding EL, Johnson T, Schunkert H, Samani NJ, Clarke R, Hopewell JC, Thompson JF, Li M, Thorleifsson G, Newton-Cheh C, Musunuru K, Pirruccello JP, Saleheen D, Chen L, Stewart A, Schillert A, Thorsteinsdottir U, Thorgeirsson G, Anand S, Engert JC, Morgan T, Spertus J, Stoll M, Berger K, Martinelli N, Girelli D, McKeown PP, Patterson CC, Epstein SE, Devaney J, Burnett MS, Mooser V, Ripatti S, Surakka I, Nieminen MS, Sinisalo J, Lokki ML, Perola M, Havulinna A, de Faire U, Gigante B, Ingelsson E, Zeller T, Wild P, de Bakker PI, Klungel OH, Maitland-van der Zee AH, Peters BJ, de Boer A, Grobbee DE, Kamphuisen PW, Deneer VH, Elbers CC, Onland-Moret NC, Hofker MH, Wijmenga C, Verschuren WM, Boer JM, van der Schouw YT, Rasheed A, Frossard P, Demissie S, Willer C, Do R, Ordovas JM, Abecasis GR, Boehnke M, Mohlke KL, Daly MJ, Guiducci C, Burt NP, Surti A, Gonzalez E, Purcell S, Gabriel S, Marrugat J, Peden J, Erdmann J, Diemert P, Willenborg C, König IR, Fischer M, Hengstenberg C, Ziegler A, Buysschaert I, Lambrechts D, Van de Werf F, Fox KA, El Mokhtari NE, Rubin D, Schrezenmeir J, Schreiber S, Schäfer A, Danesh J, Blankenberg S, Roberts R, McPherson R, Watkins H, Hall AS, Overvad K, Rimm E, Boerwinkle E, Tybjaerg-Hansen A, Cupples LA, Reilly MP, Melander O, Mannucci PM, Ardisino D, Siscovick D, Elosua R, Stefansson K, O'Donnell CJ, Salomaa V, Rader DJ, Peltonen L, Schwartz SM, Altshuler D, Kathiresan S. Plasma HDL cholesterol and risk of myocardial infarction: a mendelian randomisation study.

- Lancet. 2012 Aug 11;380(9841):572-80. doi: 10.1016/S0140-6736(12)60312-2.
- Epub 2012 May 17. Erratum in: Lancet. 2012 Aug 11;380(9841):564.
30. Singh K, Rohatgi A. Examining the paradox of high high-density lipoprotein and elevated cardiovascular risk. J Thorac Dis. 2018 Jan;10(1):109-112.
31. MacKinnon DP, Krull JL, Lockwood CM. Equivalence of the mediation, confounding and suppression effect. Prev Sci. 2000 Dec;1(4):173-81.
32. NCD Risk Factor Collaboration (NCD-RisC). A century of trends in adult human height. Elife. 2016 Jul 26;5:e13410. doi: 10.7554/eLife.13410.
33. Martin AR, Gignoux CR, Walters RK, Wojcik GL, Neale BM, Gravel S, Daly MJ, Bustamante CD, Kenny EE. Human Demographic History Impacts Genetic Risk Prediction across Diverse Populations. Am J Hum Genet. 2017 Apr 6;100(4):635-649. doi: 10.1016/j.ajhg.2017.03.004. Epub 2017 Mar 30. Erratum in: Am J Hum Genet. 2020 Oct 1;107(4):788-789.
34. Stulp G, Barrett L, Tropf FC, Mills M. Does natural selection favour taller stature among the tallest people on earth? Proc Biol Sci. 2015 May 7;282(1806):20150211.
35. Mostafavi H, Harpak A, Agarwal I, Conley D, Pritchard JK, Przeworski M. Variable prediction accuracy of polygenic scores within an ancestry group. Elife. 2020 Jan 30;9:e48376.
36. Kilpeläinen TO, Qi L, Brage S, Sharp SJ, Sonestedt E, Demerath E, Ahmad T, Mora S, Kaakinen M, Sandholt CH, Holzapfel C, Autenrieth CS, Hyppönen E, Cauchi S, He M, Kutalik Z, Kumari M, Stančáková A, Meidtner K, Balkau B, Tan JT, Mangino M, Timpson NJ, Song Y, Zillikens MC, Jablonski KA, Garcia ME, Johansson S, Bragg-Gresham JL, Wu Y, van Vliet-Ostaptchouk JV, Onland-Moret NC,

- Zimmermann E, Rivera NV, Tanaka T, Stringham HM, Silbernagel G, Kanoni S, Feitosa MF, Snitker S, Ruiz JR, Metter J, Larrad MT, Atalay M, Hakanen M, Amin N, Cavalcanti-Proença C, Grøntved A, Hallmans G, Jansson JO, Kuusisto J, Kähönen M, Lutsey PL, Nolan JJ, Palla L, Pedersen O, Pérusse L, Renström F, Scott RA, Shungin D, Sovio U, Tammelin TH, Rönnemaa T, Lakka TA, Uusitupa M, Rios MS, Ferrucci L, Bouchard C, Meirhaeghe A, Fu M, Walker M, Borecki IB, Dedoussis GV, Fritsche A, Ohlsson C, Boehnke M, Bandinelli S, van Duijn CM, Ebrahim S, Lawlor DA, Gudnason V, Harris TB, Sørensen TI, Møhlke KL, Hofman A, Uitterlinden AG, Tuomilehto J, Lehtimäki T, Raitakari O, Isomaa B, Njølstad PR, Florez JC, Liu S, Ness A, Spector TD, Tai ES, Froguel P, Boeing H, Laakso M, Marmot M, Bergmann S, Power C, Khaw KT, Chasman D, Ridker P, Hansen T, Monda KL, Illig T, Järvelin MR, Wareham NJ, Hu FB, Groop LC, Orho-Melander M, Ekelund U, Franks PW, Loos RJ. Physical activity attenuates the influence of FTO variants on obesity risk: a meta-analysis of 218,166 adults and 19,268 children. *PLoS Med*. 2011 Nov;8(11):e1001116. doi: 10.1371/journal.pmed.1001116. Epub 2011 Nov 1.
37. Abadi A, Alyass A, Robiou du Pont S, Bolker B, Singh P, Mohan V, Diaz R, Engert JC, Yusuf S, Gerstein HC, Anand SS, Meyre D. Penetrance of Polygenic Obesity Susceptibility Loci across the Body Mass Index Distribution. *Am J Hum Genet*. 2017 Dec 7;101(6):925-938.
38. Yang J, Ferreira T, Morris AP, Medland SE; Genetic Investigation of ANthropometric Traits (GIANT) Consortium; DIAbetes Genetics Replication And Meta-analysis (DIAGRAM) Consortium, Madden PA, Heath AC, Martin NG, Montgomery GW, Weedon MN, Loos RJ, Frayling TM, McCarthy MI, Hirschhorn JN, Goddard ME,

- Visscher PM. Conditional and joint multiple-SNP analysis of GWAS summary statistics identifies additional variants influencing complex traits. *Nat Genet.* 2012 Mar 18;44(4):369-75, S1-3.
39. Ward LD, Kellis M. HaploReg v4: systematic mining of putative causal variants, cell types, regulators and target genes for human complex traits and disease. *Nucleic Acids Res.* 2016 Jan 4;44(D1):D877-81.
40. 1000 Genomes Project Consortium, Auton A, Brooks LD, Durbin RM, Garrison EP, Kang HM, Korbel JO, Marchini JL, McCarthy S, McVean GA, Abecasis GR. A global reference for human genetic variation. *Nature.* 2015 Oct 1;526(7571):68-74.
41. Marie-Jo A Brion, Konstantin Shakhbazov, Peter M Visscher. Calculating statistical power in Mendelian randomization studies. *International Journal of Epidemiology* 2013 42: 1497-1501
42. Lewington S, Clarke R, Qizilbash N, Peto R, Collins R; Prospective Studies Collaboration. Age-specific relevance of usual blood pressure to vascular mortality: a meta-analysis of individual data for one million adults in 61 prospective studies. *Lancet.* 2002 Dec 14;360(9349):1903-13.
43. Bowden J, Davey Smith G, Haycock PC, Burgess S. Consistent Estimation in Mendelian Randomization with Some Invalid Instruments Using a Weighted Median Estimator. *Genet Epidemiol.* 2016 May;40(4):304-14.
44. Bowden J, Davey Smith G, Burgess S. Mendelian randomization with invalid instruments: effect estimation and bias detection through Egger regression. *Int J Epidemiol.* 2015 Apr;44(2):512-25.

45. Yavorska OO, Burgess S. MendelianRandomization: an R package for performing Mendelian randomization analyses using summarized data. *Int J Epidemiol*. 2017 Dec 1;46(6):1734-1739.

## **Figures**

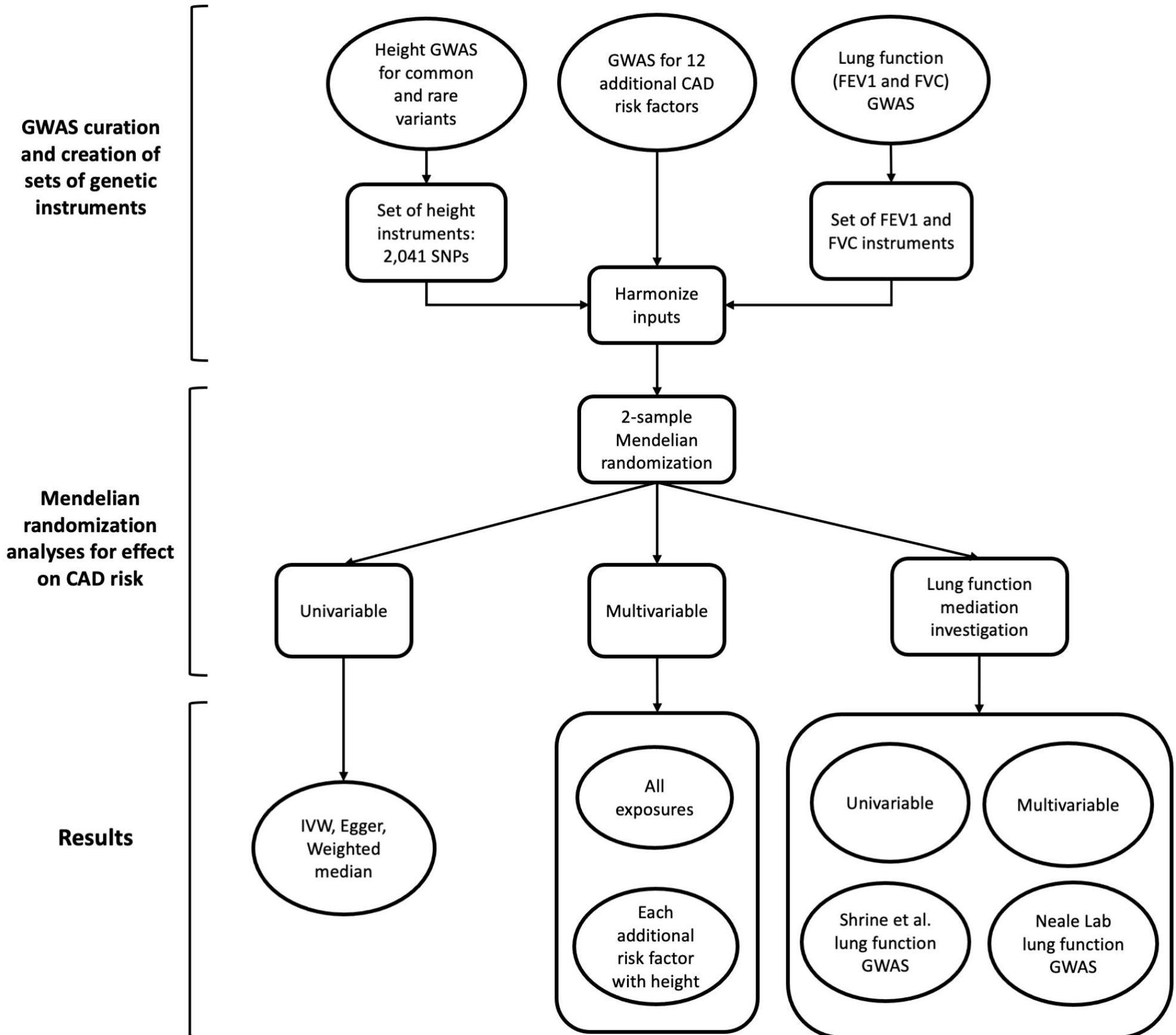
**Figure 1.** Schematic flowchart outlining our experimental setup.

**Figure 2. Forest plots of two-sample MR results using height and 12 additional CAD risk factors.** a) Univariable height-CAD analyses using inverse-variance weighted, weighted median, and Egger MR methods. b) Multivariable MR results modeling all risk factors together. Effect direction indicates direction of the exposure that increases CAD risk – effects of all risk factors were flipped to  $OR > 1$ .

**Figure 3. Investigation of lung function's mediating effect on the genetically causal height-CAD relationship, and on CAD itself.** a) Univariable MR analyses of lung function and CAD. b) Multivariable MR results modeling all risk factors together, using Shrine et al. lung function GWAS. c) Multivariable MR results modeling height and lung function factors only using Shrine et al. lung function GWAS, on CAD risk. d) Multivariable MR results modeling all risk factors together, but using Neale Lab lung function GWAS. e) Multivariable MR results modeling height and lung function factors only but using Neale Lab lung function GWAS, on CAD risk.

## **Supplementary Figures**

**Supplementary Figure 1. Univariable effect of 1-SD decrease in height on CAD risk after removing variants from set of height instruments that are nominally associated ( $p < .05$ ) with lung function from GWAS conducted by a) Shrine et al. (N SNPs = 1,112) and b) Neale Lab (N SNPs = 747).**



A

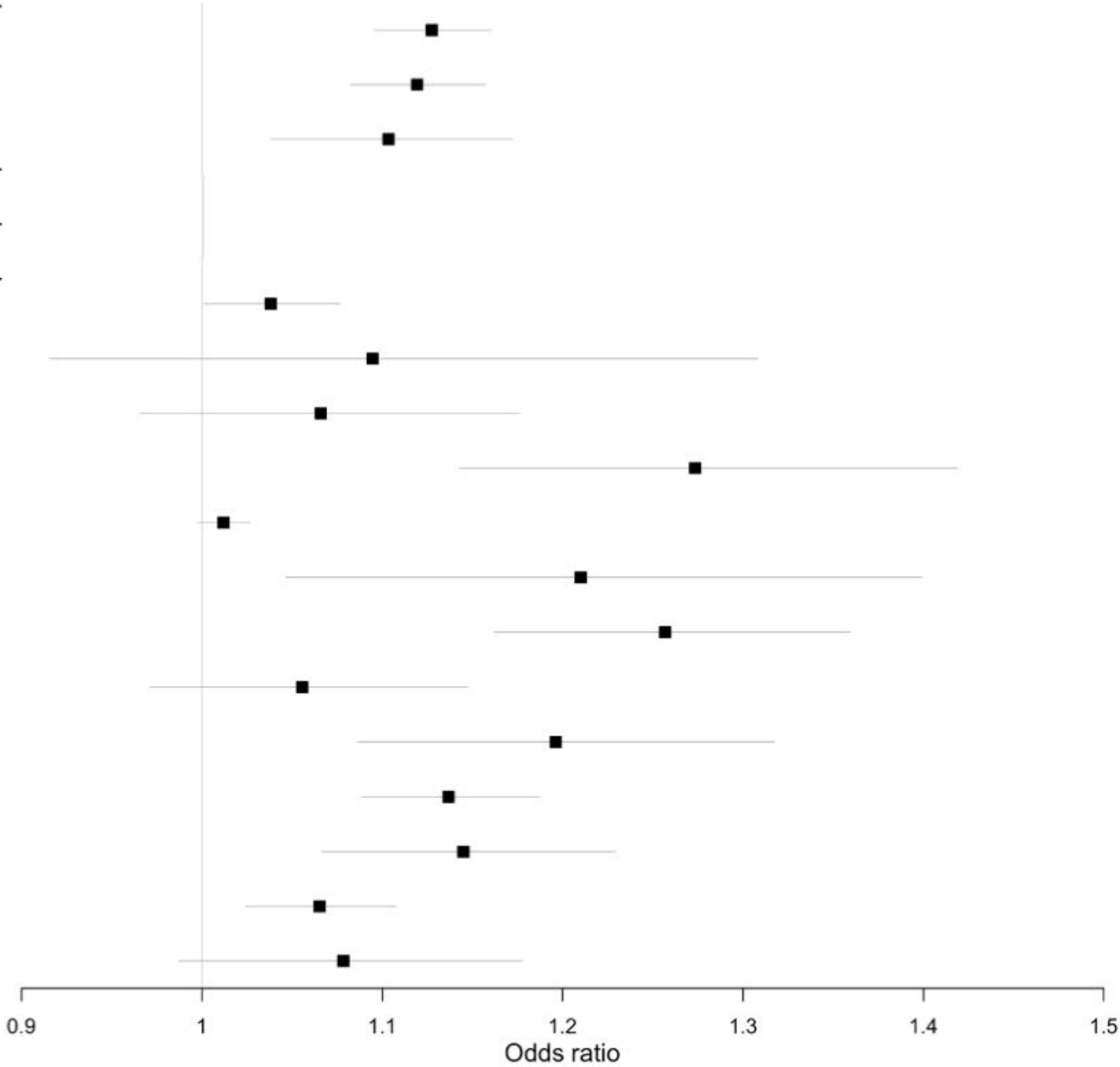
Univariable

| MR method                 | P                       | OR (95% CI)        |
|---------------------------|-------------------------|--------------------|
| Inverse-variance weighted | 1.6 x 10 <sup>-20</sup> | 1.13 (1.10 - 1.16) |
| Weighted median           | 4.2 x 10 <sup>-14</sup> | 1.12 (1.08 - 1.16) |
| Egger                     | 2.8 x 10 <sup>-4</sup>  | 1.10 (1.04 - 1.17) |

B

Multivariable

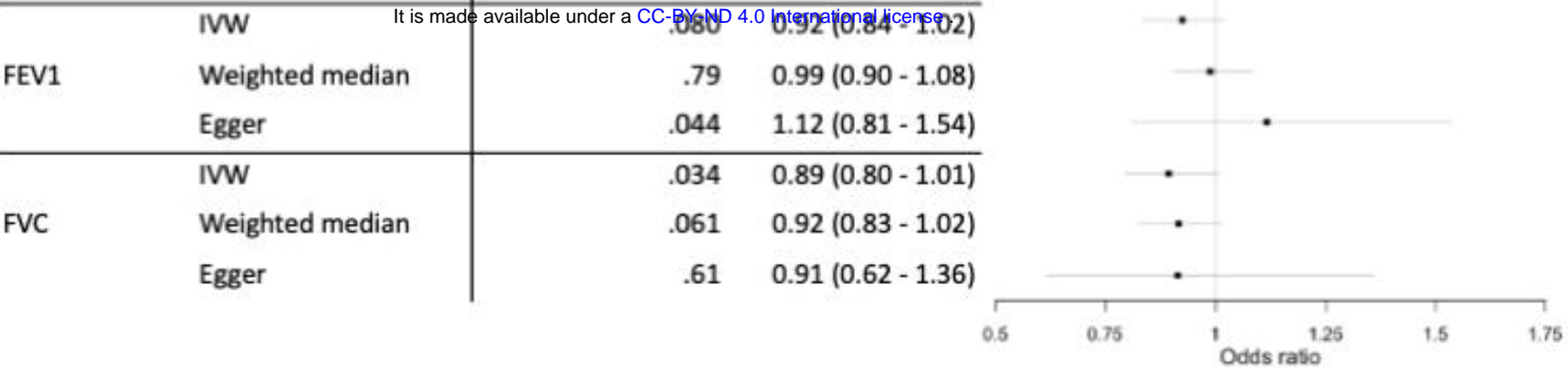
| Exposure                          | Units  | Effect direction | P                       | OR (95% CI)        |
|-----------------------------------|--------|------------------|-------------------------|--------------------|
| Height                            | SD     | -                | .021                    | 1.04 (1.00 - 1.08) |
| Alcohol consumption (# drinks/wk) | SD     | -                | .26                     | 1.09 (0.92 - 1.31) |
| Birth weight                      | SD     | -                | .15                     | 1.07 (0.97 - 1.18) |
| Body mass index                   | SD     | +                | 5.8 x 10 <sup>-7</sup>  | 1.27 (1.14 - 1.42) |
| Diastolic blood pressure          | SD     | +                | .063                    | 1.01 (1.00 - 1.03) |
| Educational attainment            | SD     | -                | .0038                   | 1.21 (1.05 - 1.40) |
| LDL                               | SD     | +                | 7.1 x 10 <sup>-11</sup> | 1.26 (1.16 - 1.36) |
| Overall activity                  | SD     | -                | .15                     | 1.06 (0.97 - 1.15) |
| Smoking initiation                | Binary | +                | 3.2 x 10 <sup>-5</sup>  | 1.20 (1.09 - 1.32) |
| Systolic blood pressure           | 5 mmHg | +                | 5.7 x 10 <sup>-11</sup> | 1.14 (1.09 - 1.19) |
| Triglycerides                     | SD     | +                | 2.0 x 10 <sup>-5</sup>  | 1.14 (1.07 - 1.23) |
| Type 2 diabetes                   | Binary | +                | 2.8 x 10 <sup>-4</sup>  | 1.07 (1.02 - 1.11) |
| Waist-hip ratio                   | SD     | +                | .056                    | 1.08 (0.99 - 1.18) |



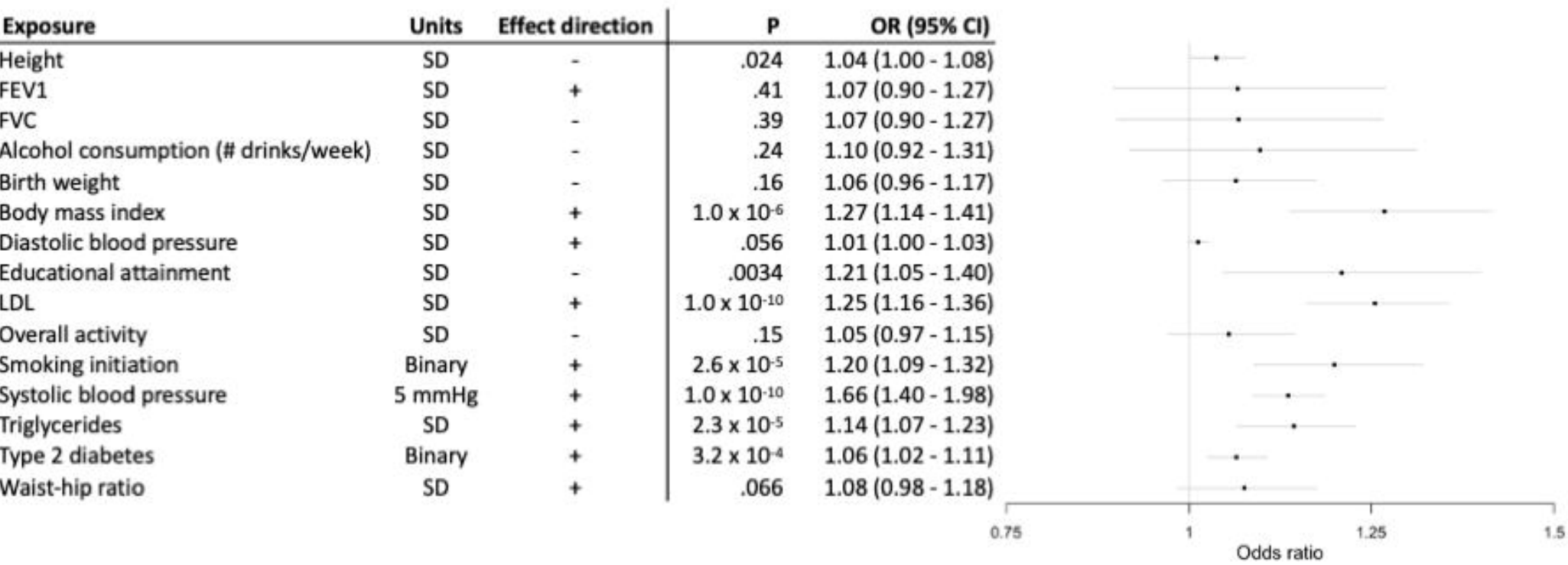


**A** Univariable MR of CAD on lung function using Shrine et al. lung function GWAS

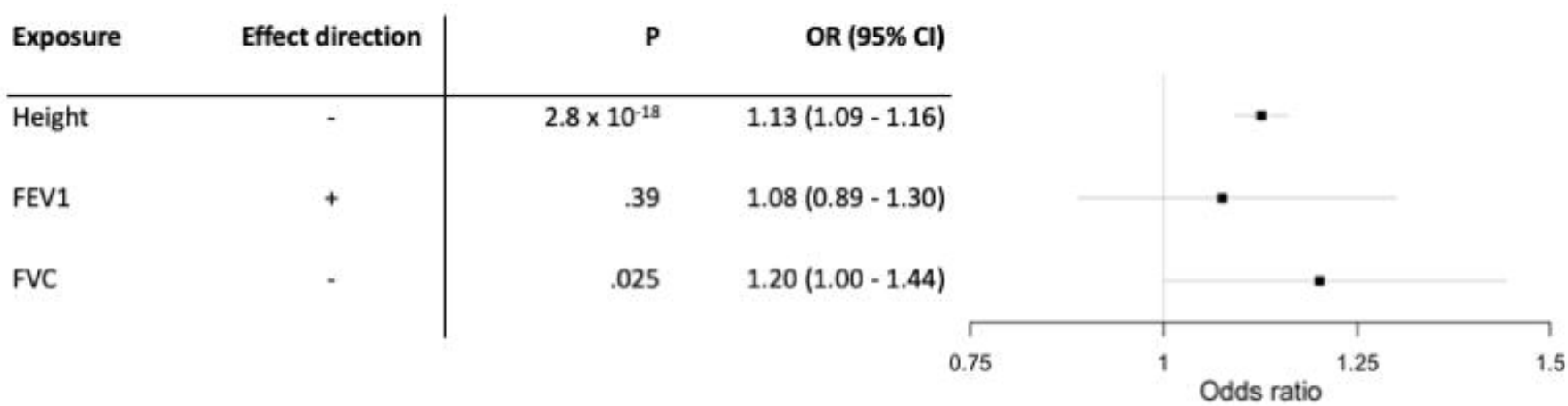
medRxiv preprint doi: <https://doi.org/10.1101/2021.12.16.21267869>; this version posted December 17, 2021. The copyright holder for this preprint (which was not certified by peer review) is the author/funder, who has granted medRxiv a license to display the preprint in perpetuity. It is made available under a CC-BY-ND 4.0 International license.



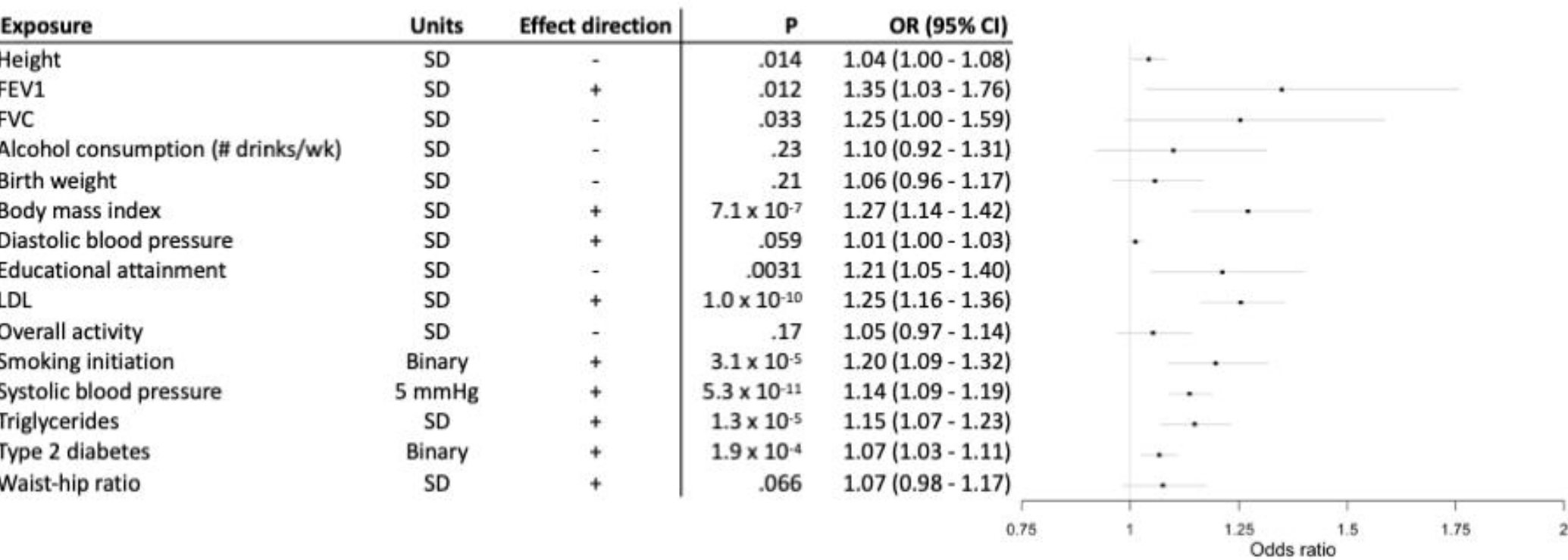
**B** Multivariable MR using all exposures, and Shrine et al. lung function GWAS



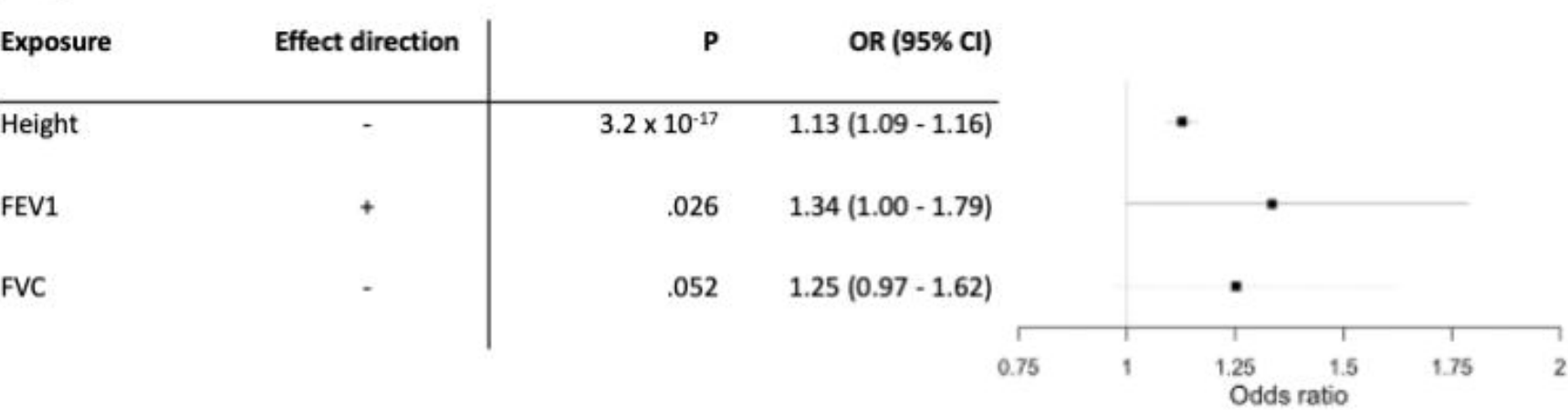
**C** Multivariable MR using only Shrine et al. lung function GWAS and height



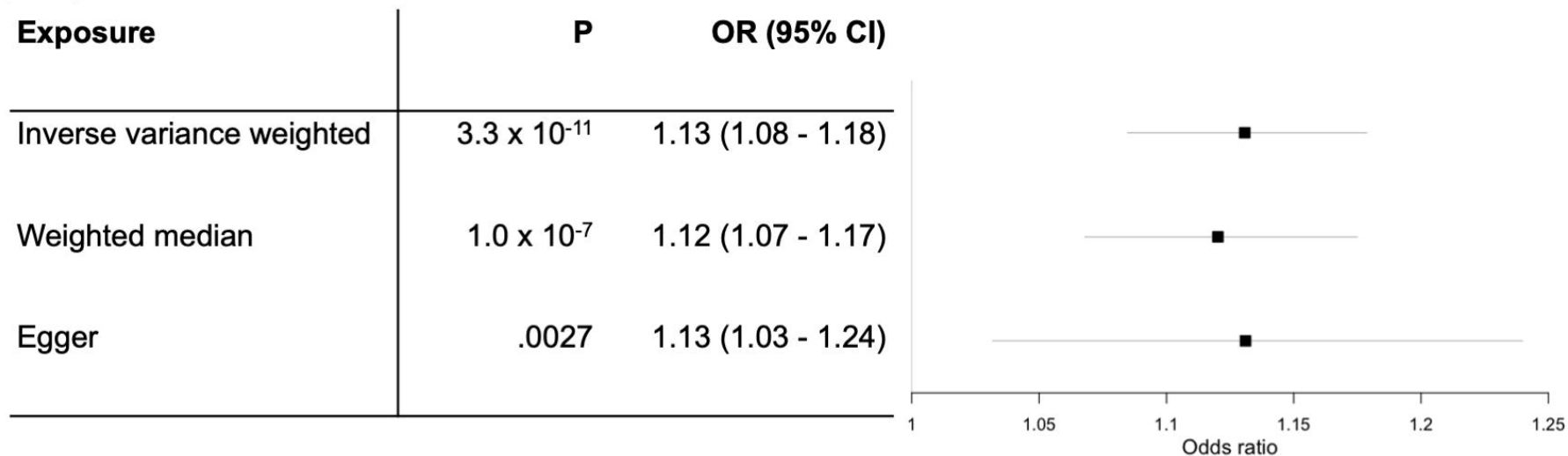
**D** Multivariable MR using all exposures, and Neale Lab lung function GWAS



**E** Multivariable MR using only Neale Lab lung function GWAS and height



**A** Univariable MR of CAD on height, removing lung associated SNPs from Shrine et al.



**B** Univariable MR of CAD on height, removing lung associated SNPs from Neale Lab

