

1 **A prospective validation of nomograms based on BC-116 and BC-106**
2 **urine peptide biomarker panels for bladder cancer diagnostics and**
3 **monitoring**

4
5 **Lourdes Mengual^{1,2}, Maria Frantzi³, Marika Mokou³, Mercedes Ingelmo-Torres¹,**
6 **Michiel Vlaming⁴, Axel S. Merseburger⁵, Marie C. Roesch⁵, Zoran Culig⁶, Antonio**
7 **Alcaraz¹, Antonia Vlahou⁷, Harald Mischak^{3,8} and Antoine G. Van der Heijden⁴**

8
9 ¹Laboratory and Department of Urology, Hospital Clinic de Barcelona, Institut
10 d'Investigacions Biomèdiques August Pi i Sunyer (IDIBAPS), Centre de Recerca
11 Biomèdica CELLEX, Universitat de Barcelona, Barcelona, Spain;

12 ²Department of Biomedical Sciences, Faculty of Medicine and Health Sciences,
13 University of Barcelona, Barcelona, Spain;

14 ³Department of Biomarker Research, Mosaiques Diagnostics, Hannover, Germany;

15 ⁴Department of Urology, Radboud University Medical Center, 6500 HB Nijmegen, The
16 Netherlands;

17 ⁵University Hospital Schleswig-Holstein, Campus Lübeck, Department of Urology,
18 Lübeck; Germany;

19 ⁶Experimental Urology, Department of Urology, Medical University of Innsbruck,
20 Innsbruck, Austria;

21 ⁷Systems Biology Center, Biomedical Research Foundation, Academy of Athens,
22 Athens, Greece;

23 ⁸Institute of Cardiovascular and Medical Science, University of Glasgow, Glasgow, UK.

24
25 **Running title:** Prospective validation of nomograms based on BC-116 & BC-106

26
27 **Keywords:** Biomarker, Bladder Cancer, Diagnosis, Mass Spectrometry, Urine.

28
29 **Financial Support:**

30 This work was supported by BioMedBC (752755; H2020-MSCA-IF-2016), funded by the
31 European Commission.

32

33

34 **Corresponding author:**

35 Dr. Maria Frantzi, Mosaiques Diagnostics GmbH, Rotenburger Strasse 20, Hannover D-
36 30659, Germany; Phone: 0049 51155474429; Fax: 0049 51155474431; E-mail:
37 frantzi@mosaiques-diagnostics.com

38

39 **Conflict of interest:**

40 H.M. holds ownership interest in Mosaiques Diagnostics GmbH. M.F. and M.M. are
41 employed by Mosaiques Diagnostics GmbH. No potential conflicts of interest were
42 disclosed by the other authors.

43

44 **Notes:**

45 Word count: 4456 (main text)

46 Total number of Figures: 5

47 Total number of Tables: 1

48

49 **Translational Relevance (150- max. 150 words)**

50 Bladder cancer (BC) has the highest lifetime cost per patient among all cancers due to
51 the high recurrence rate and the need for a long-term patient monitoring. Several
52 urinary biomarkers have been identified in recent years for BC detection and monitoring.
53 However, reaching a diagnostic accuracy sufficient for clinical implementation is
54 challenging. A pilot comparison showed complementarity between cytology and two
55 previously reported urinary biomarker panels for BC detection (BC-116) and
56 surveillance (BC-106). Considering this hypothesis, here we present a prospective
57 multicenter study aiming to evaluate diagnostic nomograms integrating cytology and the
58 biomarker panels in 602 patients screened for primary and recurrent BC. Overall, the
59 nomogram including cytology and BC-116 panel demonstrated good performance but
60 similar to BC-116 alone, in primary BC detection. Notably, the nomogram including BC-
61 106 panel and cytology showed added value and could be potentially applied for BC
62 surveillance by reducing the average number of follow-up cystoscopies.

63

64

65

66

67

68 **Abstract (250/250 words)**

69

70 **Purpose:** Non-invasive urine-based biomarkers for bladder cancer (BC) diagnosis
71 and surveillance can potentially improve current diagnostic and monitoring protocols by
72 guiding cystoscopy. Here, we aim to assess the diagnostic performance of nomograms
73 based on published biomarker panels for BC detection (BC-116) and monitoring of
74 recurrence (BC-106) in combination with cytology, in two prospectively collected patient
75 cohorts.

76

77 **Experimental Design:** 602 recruited patients were screened for presence of BC,
78 out of which 551 were found eligible for further analysis. For the primary setting, urine
79 samples from 73 eligible patients were analyzed from those diagnosed with primary BC
80 (n=27) and benign urological disorders (n=46). For the surveillance setting, 478 eligible
81 patients were considered (83 BC recurrences; 395 negative for recurrence). Urine
82 samples were analyzed with capillary electrophoresis coupled to mass spectrometry
83 and the biomarker score was estimated via a support vector machine-based software.

84

85 **Results:** Validation of the BC-116 biomarker panel resulted in 89% sensitivity and
86 67% specificity ($AUC_{BC-116}=0.82$), similar to the published estimates. The nomogram
87 based on cytology and BC-116 resulted in good ($AUC_{Nom116}=0.85$) but not significantly
88 better performance than the BC-116 alone ($P=0.5672$). BC-106 biomarker panel
89 showed 89% sensitivity and 32% specificity for surveillance, while improved
90 performance was achieved when a nomogram including BC-106 and cytology was
91 evaluated ($AUC_{Nom106}=0.82$), significantly outperforming both cytology
92 ($AUC_{Cyt}=0.72;P=0.0022$) and BC-106 alone ($AUC_{BC-106}=0.67;P=0.0012$).

93

94 **Conclusions:** BC-116 biomarker panel is a useful test for detecting primary BC.
95 BC-106 classifier integrated with cytology and showing >95% negative predictive value,
96 might be useful for decreasing the number of cystoscopies during surveillance.

97

98

99

100 **Introduction**

101 Bladder cancer (BC) has the highest recurrence rate of all cancers. The overall lifetime
102 risk for BC is 2.4%. In Europe, the age-standardized incidence and mortality rates for
103 BC are 11.3 and 3.0 per 100,000 person years, respectively (1,2). In the USA, the
104 respective rate is 10.9 per 100,000 person years, while the annual number of
105 attributable deaths is 2.1 per 100,000 persons (2,3). Most incident BC cases (roughly
106 75%) are non-muscle invasive (NMIBC) tumors, exhibiting a 5-year recurrence rate of
107 50-70% and a 10-30% 5-year progression rate to muscle-invasive disease (MIBC), thus
108 necessitating long-term patient monitoring (4). Both the timely detection of primary/
109 incident BC and efficacious surveillance of BC recurrence are vital for optimal patient
110 outcomes. Cystoscopy remains the gold standard for BC detection (5). However, it is an
111 invasive and expensive approach, having also potential complications while subtle
112 recurrences can be easily missed (6). Furthermore, it is bothersome for patients (7).
113 During the corona pandemic, increased waiting times for cystoscopies, and delayed
114 diagnoses are more prominent. The European Association of Urology (EAU) (8) gives
115 priority to patients with high-risk tumors, whereas recommends postponing cystoscopy
116 by six months for patients with low and intermediate –risk tumors, which might be
117 stressful for a lot of patients. Urine cytology is still the most accurate non-invasive test
118 for BC detection having high sensitivity (84%) in high grade (G3) tumors, but low
119 sensitivity (16%) in low grade tumors (G1), while in experienced hands specificity can
120 reach values over 90% (5). However, in recent large prospective multicenter studies it
121 was demonstrated that the performance of urine cytology in contemporary practice
122 proves to be even lower than previously reported (9). Thus, a clear need for a non-
123 invasive approach for BC detection and monitoring is evident. Liquid biopsy has yielded
124 enormous interest in the field of BC (10) with urine being particularly attractive due to its
125 direct contact with the tumor as well as it can be easily collected in a non-invasive
126 manner (11).

127 Capillary electrophoresis coupled to Mass Spectrometry (CE-MS) provides high-
128 resolution proteomics profiling data, is characterized by high reproducibility (12) and has
129 been applied for the investigation of peptides and low molecular weight proteins as
130 biomarkers derived from body fluids, especially urine (12,13). Candidate biomarkers can
131 be sequenced and identified by employing CE coupled to tandem MS (MS/MS) and
132 liquid chromatography coupled to MS/MS (LC-MS/MS) proteomics platforms (14), in

133 combination with appropriate bioinformatics tools and algorithms that enable CE-MS
134 data assessment, peptide list extraction and calibration using internal standard peptides
135 (15). Urinary profiling data acquired by CE-MS have been previously explored for
136 detection of BC (16) as well as discrimination of NMIBC from MIBC (17). Moreover,
137 multi-biomarker panels appear advantageous compared to single biomarkers, especially
138 in the context of complex diseases (18). Towards the need for reducing cystoscopies,
139 we previously developed two urinary peptide biomarker panels for: i) non-invasive
140 detection of primary BC (BC-116 biomarker panel) and ii) for monitoring of recurrent BC
141 in patients undergoing surveillance (BC-106 biomarker panel) (19). To develop both
142 biomarker panels, in the above initial study a total of 1,357 urine samples from patients
143 suspected of BC, as well as non-malignant urological controls from five different clinical
144 centers were analyzed through CE-MS. Among the biomarkers were peptides of Small
145 proline-rich protein 3, 14-3-3 sigma protein, CD99 antigen, Apolipoprotein A-I,
146 Fibrinogen α and β , Beta-2-macroglobulin, Basement membrane-specific heparan
147 sulfate proteoglycan core protein and Membrane-associated progesterone receptor
148 component 1. Both biomarker panels exhibited good performance, with the BC-116
149 biomarker panel reaching 91% sensitivity and 68% specificity, and the BC-106
150 biomarker panel 87% sensitivity and 51% specificity at the pre-defined threshold. The
151 area under the ROC curve values (AUCs) were 0.87 and 0.75, for detection of primary
152 (BC-116) and recurrent (BC-106) urothelial BC, respectively. When investigating the
153 subpopulation of low/ intermediate-risk patients (NMIBC G1–G2), although in low
154 number of patients (n=26), BC-106 biomarker panel yielded a sensitivity of 89% in
155 detecting recurrent BC (AUC=0.72). Additionally, the negative predictive value (NPV)
156 and positive predictive value (PPV) of BC-116 were estimated at 81.3% and 83.2%
157 (considering a prevalence rate of 63.5%), while for BC-106 at 93.6% and 32.3%
158 respectively (accounting for a prevalence of 21.2%) (19). The predictive value of BC-
159 106 biomarker panel for BC relapse was also evaluated in a follow-up study indicating a
160 prognostic potential of the urinary biomarker panel based on the peptidomics profile in
161 prognosis of BC recurrence [HR: 3.15; 1.73-5.70 (95% CI); P=0.0002] (20).

162 Based on the above biomarker panels, a pilot assessment showed an added value of
163 the urine biomarker panels when combined with cytology, and thus demonstrated a
164 level of complementarity between the two urological investigations (19). Considering
165 this hypothesis, here we present a multicenter clinical study with the aim to evaluate
166 diagnostic nomograms based on cytology and the BC-116 and BC-106 peptide

167 biomarkers in a prospective setting. To this end, 602 patients were recruited, those with
168 suspicious symptoms or under surveillance that were scheduled for cystoscopic
169 examination to investigate presence of BC.

170

171 **Materials and Methods**

172 ***Study design and participants***

173 In this study, 602 patients with suspicious symptoms for BC and those patients under
174 surveillance because of a previous BC diagnosis were enrolled at the Radboud
175 University Medical Center in Nijmegen (The Netherlands) and at the Hospital Clinic of
176 Barcelona (Spain). Out of the 602 patients, 18 were excluded due to the presence of
177 other cancers / comorbidities including: i) upper urinary tract cancer (n=14), ii) prostate
178 cancer (n=2), iii) renal cell carcinoma (n=1) and iv) pancreatic carcinoma (n=1). Of the
179 remaining 584 patients, 33 initially defined as positive for BC (based on cystoscopy)
180 were further excluded as histopathological data based on transurethral resection of the
181 bladder tumor (TURB-T) or biopsy were either not available or reported a benign lesion.
182 Therefore, the positive cystoscopy result could not be confirmed. Among the 551
183 eligible patients, 366 were recruited at the Hospital Clinic of Barcelona and 208 at the
184 Radboud University Medical Center. For the biomarker panel validation, the patients
185 were stratified into two cohorts: a) the primary group including 73 patients positive for
186 primary BC and those with suspicious symptoms scheduled for cystoscopy, and b) the
187 recurrent group, including 478 patients under surveillance, as presented in detail below.
188 In all cases the presence of bladder tumors was confirmed with cystoscopy and
189 histological confirmation (biopsy or TURB-T). Tumor grade and stage were determined
190 according to WHO criteria (21) and Tumor Node Metastasis (TNM) classification (22),
191 respectively. Tumors were classified according to their risk of recurrence and
192 progression into high, intermediate, or low risk based on the EAU guidelines published
193 in 2018 (23). The study was performed in accordance with the Declaration of Helsinki
194 and ethical approval was obtained by local Ethics Committees. Informed consent
195 processes adhered to Institutional Review Board-approved guidelines. Ethical approval
196 for this study was obtained by the Ethics Committee in Medical School of Hannover (ID:
197 3274-2016). A schematic representation of the study design is presented in **Figure 1**.

198

199

200 ***Primary cohort***

201 For assessing primary urothelial BC, 73 eligible participants, as per availability, were
202 evaluated. Forty- six patients were enrolled at the Hospital Clinic of Barcelona whereas
203 the remaining 27, were patients undergoing cystoscopy at Radboud University Medical
204 Center. Among the 73 patients, 27 were diagnosed with primary urothelial BC whereas
205 the remaining 46 presented with suspicious symptoms for BC, hematuria, or suffered
206 from other urological diseases (e.g. acute cystitis, nephrolithiasis) and served as
207 urologic controls. At the time of recruitment all patients with primary tumors did not have
208 a prior history of urothelial cell carcinoma and underwent transurethral resection to
209 radically remove the bladder tumor. The cohort characteristics are summarized in **Table**
210 **1** and the full list of patient clinical data is given in **Supplementary Table S1**.

211

212 ***Recurrent cohort***

213 For the evaluation of BC recurrence, 511 patients scheduled for follow-up monitoring
214 cystoscopies due to prior history of BC were analyzed in compliance with the EAU
215 guidelines and the European Organization for Research and Treatment of Cancer
216 (EORTC) recurrence and progression scores (23). Among these were 320 patients
217 undergoing cystoscopy at the Hospital Clinic of Barcelona and 181 at the Radboud
218 University Medical Center. In both clinical centers, BC recurrence was confirmed by
219 cystoscopy and histological assessment. Negative score at cystoscopy was used to
220 exclude recurrence and define controls. The recurrent cohort comprised of 83 confirmed
221 BC cases and 395 negative for recurrence controls. Of the 83 relapses, 79 were NMIBC
222 (Ta, CIS, T1) and 4 MIBC (\geq T2) cases. The cohort characteristics are summarized in
223 **Table 1** and the full list of patient clinical data is given in **Supplementary Table S2**.
224 Complete information about the clinicopathological tumor characteristics (including risk,
225 stage, and grade) for the previously diagnosed BC tumors is also provided
226 (**Supplementary table S2**).

227

228 ***Urine collection and cytologic evaluation***

229 All urine samples were collected prior to cystoscopy, if applicable the day before the
230 TURB-T or the day before cystectomy. Voided urine samples were collected in sterile
231 containers and immediately stored at -20°C until further processing. From all patients
232 and controls, only one single sample was included. Without being mandatory, patients

233 were advised to have cytology at cystoscopy or during the period between cystoscopy
234 and surgery. Urine cytology was performed according to Papanicolaou staining and
235 evaluated by expert pathologists in each center blinded to the patient's clinical history.
236 The results were considered as positive or negative.

237

238 ***Sample preparation and CE-MS analysis***

239 Urine sample preparation and CE-MS analysis was performed according to previous
240 reports (19,20,24). In brief, 700 μ l of each urine sample were diluted with two volumes
241 alkaline buffer containing 2 M urea, 10 mM NH₄OH and 0.02% SDS (pH 10.5).
242 Thereafter, the samples were concentrated at 1.1 ml using Centriscart ultracentrifugation
243 filters with a cut-off of 20 kDa (Sartorius, Göttingen, Germany) after centrifugation at
244 3,000g. The filtrate was then desalted using PD-10 columns (GE Healthcare, Munich,
245 Germany) and equilibrated in 0.01% NH₄OH in HPLC-grade water. The peptide extracts
246 were lyophilized and stored at 4°C until further use. CE-MS analysis was performed
247 using a P/ACE MDQ capillary electrophoresis system (Beckman Coulter, Fullerton,
248 USA) on-line coupled to a MicroTOF MS (Bruker Daltonic, Bremen, Germany), as
249 described previously (19,20). Mass spectral ion peaks representing identical molecules
250 at different charge states were deconvoluted into single masses using MosaiquesVisu
251 software (25). In addition, migration time and ion signal intensity (amplitude) were
252 normalized using 29 internal peptide standards with excretion levels unaffected by any
253 disease state (26). The resulting peak list characterizes each peptide by its molecular
254 mass [kDa], normalized migration time [min], and normalized signal intensity. The
255 detected peptides were annotated, matched and deposited in a Microsoft SQL database
256 (Human Urinary Proteome Database (12,27)) and used as an input in the present study.
257 Accuracy, precision, selectivity, sensitivity, reproducibility, and stability were reported
258 previously (16,24).

259

260 ***Statistical Analysis***

261 The proportion, mean, standard deviation, median and interquartile range (25th–75th
262 percentiles) estimates were calculated to describe the distribution of the different
263 variables in the patients' cohorts (summarized in **Table 1**). The biomarker panels'
264 scores were calculated via the support vector machine (SVM)-based software, namely

265 MosaCluster (version 1.7.0), as previously described (19). Sensitivity and specificity of
266 the biomarker panels were estimated based on the number of correctly classified
267 samples, as defined by cystoscopy. Confidence intervals (95% CI) were based on exact
268 binomial calculations and were calculated along with the receiver operating
269 characteristic (ROC) plots in MedCalc® Version 12.1.0.0 (Mariakerke, Belgium). The
270 area under the ROC curve (AUC) was evaluated to estimate the overall accuracy
271 independent upon a particular threshold (28). The relationship of BC-116 and BC-106
272 panel with cytology was established using multiple linear regression analyses.

273

274 **Results**

275 ***Validation of the BC-116 biomarker panel for detection of primary BC***

276 First, assessment of the BC-116 biomarker panel alone was performed to investigate its
277 significance for the BC detection. For the evaluation of the BC-116 biomarker panel, the
278 primary patient cohort was utilized, including 27 patients with primary urothelial BC and
279 46 patients presenting with non-malignant urological conditions. As shown in **Figure 2a**,
280 the AUC for BC-116 biomarker panel (AUC_{BC-116}) was estimated at 0.82 with the 95% CI
281 ranging from 0.71 to 0.90 ($P < 0.0001$). At the validated cut-off level of -0.27, the
282 sensitivity was estimated at 89% and the specificity at 67%. The classifier correctly
283 classified 24 out of the 27 primary BC cases whereas 15 out of the 46 urological
284 controls were misclassified as BC cases. Considering a prevalence rate of 37%, as
285 estimated on the basis of the participating centers, the NPV was computed at 91%
286 (95% CI 61% to 100%) while the PPV was estimated at 61% (95% CI 33% to 85%). As
287 presented in **Figure 2B**, the BC-116 biomarker panel significantly discriminated
288 urothelial BC cases from controls ($P < 0.0001$, Kruskal-Wallis H test) but also separated
289 controls from cases according to their TNM stage and grade ($P < 0.05$, Kruskal-Wallis H
290 test; **Figure 2C-D**).

291

292 ***Comparative assessment of BC-116 with cytology***

293 For 58 (out of 73) patients of the primary cohort, data from the cytologic evaluation of
294 the urine samples were available (**Supplementary Table 1**). Sensitivity of cytology for
295 detecting primary BC was estimated at 42.3% while sensitivity of the classifier was
296 88.5% in this subset of patients. Twelve of the 26 primary BC cases were detected by
297 the BC-116 biomarker panel but were missed by urine cytology. Notably, out of these 12

298 patients, eight were bearing low grade BC tumors (TaG1) but were also three patients
299 with high grade NMBC (T1G3) and one with MIBC that were missed by cytology and
300 detected by the BC-116. Three cases that were not detected by the BC-116 panel were
301 also missed by urine cytology. These were all patients bearing low grade BC (TaG1).
302 Along these lines, the NPV was higher for the BC-116 classifier (91.2%, 95% CI 60.9 –
303 99.7) than that of the urine cytology (73.2%, 95% CI 49 – 90.2). Nevertheless, PPV was
304 higher for urine cytology (77.9%, 95% CI 26.7 – 99.2) than for the BC-116 classifier
305 (61.3%, 95% CI 31.4 – 86.0). Specificity of cytology was higher than that of the BC-116
306 panel (93.7% and 67.2% respectively). Multivariate analysis showed that BC-116
307 biomarker panel performed significantly better than cytology in primary BC detection,
308 presenting an AUC value 0.84 (95% CI 0.72-0.92) for the classifier and 0.68 (95% CI
309 0.55-0.80) for cytology (P=0.0195 for pairwise comparison) (**Figure 3A**).

310

311 ***Integrative nomogram including BC-116 and cytology for detecting primary BC***

312 An integrated nomogram based on the BC-116 based urinary biomarker panel and
313 cytology was also examined in the primary patient cohort. As shown in **Figure 3B**, the
314 AUC for the integrative nomogram was estimated 0.85 (0.73-0.93; 95% CI; P< 0.0001)
315 only slightly but not significantly higher than the BC-116 alone (0.84; P= 0.5672) yet
316 significantly higher than cytology alone (0.68; P= 0.0016). At the optimal cut-off level of
317 0.39, the sensitivity was estimated at 84.6% and the specificity at 75%. The integrative
318 nomogram correctly classified 23 out of the 26 primary BC cases whereas 9 out of the
319 32 controls were misclassified. Considering a prevalence rate of 37%, as estimated on
320 the basis of the participating centers, the NPV was computed at 89.5% (95% CI 60% to
321 99%) while PPV was estimated at 66.6% (95% CI 35% to 90%).

322

323 ***Validation of the BC-106 biomarker panel for detection of recurrent BC***

324 The performance of the BC-106 biomarker panel for detection of bladder cancer
325 recurrence was evaluated in 478 patients. Among those, were 83 patients bearing a
326 histopathologically confirmed BC recurrence and 395 controls negative for recurrence.
327 As presented in **Figure 4A**, the AUC was estimated at 0.67 with the 95% CI ranging
328 from 0.63 to 0.72. At the previously established cut-off of -0.63, sensitivity was
329 estimated at 90.4% whereas specificity at 29.1%. This means that 75 out of the 83
330 recurrences were correctly classified as positive by the BC-106 biomarker panel.
331 However, the number of correctly classified negative controls was only 112. Accounting

332 for a prevalence of 17.4% in the investigated population, the NPV was estimated at
333 93.2% (95% CI 73.3% - 99.6%) while the PPV was calculated at 21.1% (95% CI 11.7%
334 to 33.4%).

335

336 **Comparison of BC-106 biomarker panel performance with urine cytology**

337 Urine cytology was performed in 318 patients of which, based on cystoscopy, 36 were
338 positive for recurrence cases and 282 were negative for recurrence controls. Sensitivity
339 of the BC-106 biomarker panel for detecting recurrent BC was higher than the one of
340 cytology (91.6% and 50.0% respectively) in this subset of samples. However, the
341 specificity BC-106 biomarker panel was lower than the one of cytology (31.2% for the
342 classifier and 94.7% for cytology). Based on the ROC curve analysis, the estimated
343 AUCs were reported to be comparable between the two tests [AUC for BC-106 was
344 0.67 (0.61 to 0.72; 95% CI), while AUC for cytology was 0.72 (0.67 to 0.77; P for
345 difference between the 2 tests =0.3853), (**Figure 4B**).

346

347 ***Integrative nomogram including BC-106 and cytology for detecting recurrent BC***

348 An integrative nomogram based on the BC-106 biomarker panel and cytology was
349 further validated in 318 patients from the recurrence cohort, for which the results from
350 the cytological examination were available. An improved diagnostic performance was
351 observed when the BC-106 classifier was integrated with urine cytology (AUC = 0.82,
352 95% CI 0.77-0.86, P< 0.0001), **Figure 5A**. At the optimal cut-off of 0.06, sensitivity was
353 estimated at 86% whereas specificity at 61%. Out of the 36 recurrent BC cases, 31
354 were correctly classified as positive by the integrative nomogram and out of 282, 172
355 patients were correctly classified as controls (negative for recurrence). Accounting for a
356 prevalence of 17.4% in the investigated population, the NPV was estimated at 95.4%
357 (95% CI 74.9% - 99.9%) while the PPV was calculated at 31.7% (95% CI 11.3% to
358 59.1%). The nomogram was found of significantly improved performance in comparison
359 to cytology alone [AUC_{NOM106} was 0.74 (0.69 to 0.78; 95% CI) while AUC for cytology
360 was 0.72 (0.67 to 0.77; P=0,0022)], but also compared to the BC-106 biomarker panel
361 alone [AUC for BC-106 was 0.66 (0.61 to 0.72; 95% CI; P= 0.0012)]. As presented in
362 **Figure 5B**, the integrative nomogram significantly discriminated recurrent BC cases
363 from negative for recurrence controls (P= 0.0005, Kruskal-Wallis H test), but also
364 separated patients with recurrent BC from those negative for recurrence (controls)
365 according to their TNM stage and grade (P< 0.05, Kruskal-Wallis H test; **Figure 5C-D**).

366

367 **Reducing the number of follow-up cystoscopies by using the Nomogram BC-106/**
368 **cytology**

369 In the participating clinical centers of the study, recurrence was detected in 15.6% of all
370 follow-up cystoscopies while 84% of the patients previously diagnosed with BC were
371 without recurrence at the time of follow-up cystoscopy. At the cutoff point value of 0.06
372 of the integrative nomogram sensitivity was 86% whereas specificity at 61%. With a
373 very high NPV value (estimated at 95.4%) based on the nomogram, 172 out of 282
374 patients truly did not bear any recurrence, while only 4 out of the 36 cases would have
375 been missed. All four patients were carrying a low grade BC (TaG1). Based on this, and
376 assuming that patients who present a negative classification based on the integrative
377 nomogram (n=172) will not undergo a cystoscopy, more 60% of all cystoscopies could
378 be prevented, at the cost of 14% of low grade recurrences remaining undiagnosed.

379

380 **Discussion**

381 Within the last decade several urinary biomarkers have been developed for BC
382 detection and monitoring (summarized in (29,30)), including among others various
383 promising proteomics and peptidomics biomarkers identified by mass spectrometry (31).
384 To date, none of these biomarkers have replaced cystoscopy as the gold standard for
385 diagnosis and surveillance or has been accepted for diagnosis or follow-up in routine
386 practice or clinical guidelines (5,28). The lack of validation studies presents a challenge
387 in the expanding field of urinary biomarkers, thus delaying their uptake in the clinical
388 setting. In the present prospective study two unique urinary peptide-based biomarker
389 panels that were previously developed for detecting primary (BC-116 panel) and
390 recurrent urothelial BC (BC-106) based on CE-MS proteomics analyses (19) were
391 prospectively validated.

392 The BC-116 biomarker panel initially developed for detection of primary BC (19)
393 demonstrated excellent reproducibility in this prospective cohort study. BC-116
394 exhibited good performance (AUC_{BC-116} 0.82) that was comparable to the one previously
395 described (AUC 0.87) (19). Furthermore, BC-116 sensitivity and specificity (89% and
396 67% respectively) were similar to those previously reported (91% sensitivity and 68%
397 specificity) (19). In this prospective study, BC-116 again performed better than cytology

398 and successfully classified the majority of the BC cases (panel: 24/27 patients; cytology:
399 11/27 patients). Cytology missed 58% of the tumors, similarly to other studies (32) and
400 did not identify any BC cases that were not previously identified by the BC-116
401 classifier. Interestingly, 82% of the cases that were missed by cytology were correctly
402 classified by the panel, while three cases that were missed by BC-116 were all low
403 grade BC. The negative predictive value of the classifier was also higher than cytology's
404 (91% versus 73%). Additionally, an integrative nomogram including BC-116 and
405 cytology was investigated, showing, however only slightly increased performance over
406 the BC-116 alone. These results provide a strong argument for using BC-116 instead of
407 cytology. Considering that CE-MS is validated platform that is applied for routine
408 diagnostics, BC-116 biomarker panel could be potentially applied in clinical practice
409 even as an adjunct to cystoscopy to detect primary or missed tumors. Yet, a cost-
410 effectiveness analysis is required to demonstrate economic efficiency.

411 For detection of recurrence, the BC-106 panel exhibited similar performance than urine
412 cytology, lower than previously reported (19). The observed reduced performance is
413 mostly attributed to the misclassification of almost half of the negative for recurrence
414 patients. The reduced specificity of BC-106 for detecting recurrent BC could be
415 attributed to differences in the study population and the demographics of the patients. In
416 the initial study, patients with a minimum of one year recurrence- free follow up were
417 investigated, while in this prospective setting, any patient during the regular BC
418 monitoring setting was included, mainly NMIBC (>98%). Importantly, BC-106 showed
419 complementary value with cytology. This fact was already previously observed and has
420 now been replicated in this study. Based on this, the previously reported integrative
421 nomogram including BC-106 and cytology, was also assessed, demonstrating
422 significantly increased performance compared to both cytology alone and the BC-106
423 alone.

424 Based on the performance estimates, accounting for NPV values of >90% for primary
425 and >95% for surveillance, the availability of highly sensitive urine peptide markers, in
426 combination with cytology allows for the reduction of the number of follow-up
427 cystoscopies as in the clinical practice only patients with a positive test will undergo
428 cystoscopy, whereas for those with a negative test cystoscopy could be postponed/
429 skipped (33). The integrative nomogram, including BC-106 classifier and cytology, ruled
430 out 172 of the 282 samples, theoretically reducing the number of follow up cystoscopies

431 by factor 2. Based on the integrative BC-106 model, approximately 14% of the BC
432 patients at follow-up were incorrectly misclassified as not having recurrence, but these
433 were all low grade recurrent BC. Yet, even cystoscopy which is the gold standard
434 misses up to 15% of the papillary and up to 30% of the flat lesions (34). These findings
435 along with the high NPV of the integrative nomogram further supports that a voided
436 urine sample can rule out BC with high confidence; thus reducing the number of
437 cystoscopies and minimizing patients' discomfort.

438 Both BC-116 and BC-106 have similar performance as other FDA-approved and/or
439 currently under investigation urinary tests. To date, there are six urinary tests approved
440 by the FDA for clinical use in conjunction with cystoscopy (29,30). Among these,
441 NMP22 Bladder Cancer ELISA test, NMP22 BladderChek point-of-care test and
442 UroVysion have FDA approval for diagnosis and surveillance whereas immunocyte
443 (UCyt+), BTA-TRAK, and BTA-STAT have been approved for BC surveillance following
444 the diagnosis of a primary tumor (29). Several meta-analyses studies have been
445 conducted to evaluate the performance of these panels and a remarkably broad
446 variation in the range of the sensitivity, specificity, NPV and PPV has been observed
447 (30). For instance, in a meta-analysis study of NMP22 BladderChek it was shown that
448 for detecting BC, the pooled sensitivity of the test was 56%, specificity was 88% and the
449 AUC value was 0.83 (35). Similarly, in another study evaluating the utility of UroVysion,
450 it was shown that the overall sensitivity, specificity, PPV, and NPV in detecting BC were
451 61.9%, 89.7%, 53.9%, and 92.4%, respectively (36). The performance rates of BC-116
452 and BC-106 panels are at least as good as the FDA-approved tests. However,
453 considering potential confounding factors and the significant variations in the clinical
454 setting, a direct comparison of our biomarkers with the FDA-approved based on the
455 data currently available is complicated and difficult to be accomplished.

456 A high NPV is important when the panel has a negative score and represents a point of
457 reference to spare unnecessary cystoscopies. This value is critical especially in high-
458 grade disease where a negative biomarker test could result in a missed cancer, thus
459 having detrimental effects with respect to disease progression (30). In the present
460 study, the layout of the clinical settings closely represents a "real-clinical setting"
461 situation. Considering the prevalence rate of each cohort in this study, the NPV was
462 computed at 89.5% for the integrative nomogram of BC-116 classifier and cytology for
463 detecting primary BC and at 95.4% for the integrative nomogram of BC-106 and
464 cytology for detecting BC recurrence, comparable to the previous study (19). Thus, both

465 panels demonstrated high NPV values that may offer benefit to patients with high-risk
466 disease (either with hematuria at primary diagnosis or under surveillance).
467 One of the limitations of this study is that potential confounding factors such as clinical
468 treatments before the last recurrence were not available for all patients and thus were
469 not considered. Nevertheless, as shown in the initial study, prior treatment did not affect
470 the urinary peptidomic profiles (19). As another limitation of our study, follow-up data
471 were not accessible for all patients. Thus, correlation analysis of false positives cases
472 with later recurrences was not feasible. Therefore, no conclusion can be made on false-
473 positives of BC-116 and BC-106 biomarker panels since they could be attributed to
474 early detection of subclinical recurrence that could not be detected by cystoscopy. This
475 has been previously described for other FDA-approved urinary biomarkers (37).
476 Furthermore, no investigations were performed in patients that had a positive test but a
477 negative cystoscopy to rule out the presence of upper tract tumors.
478 Collectively, this prospective study provides evidence on the clinical relevance of the
479 BC-116 and BC-106 biomarker classifiers for BC screening and monitoring. As
480 supported by the presented results, such non-invasive biomarker panels can facilitate
481 BC diagnosis (BC-116) and can be applied as adjuncts to cystoscopy in combination
482 with cytology (BC-106) to reduce the number of follow-up cystoscopies as well as
483 patient discomfort and financial burden.

484

485 **Acknowledgments**

486 This work was supported in part by BioMedBC (752755; H2020-MSCA-IF-2016), funded
487 by the European Commission.

488

489

490

491

492

493

494

495

496

497

498

499 References

- 500 1. Ferlay J, Shin HR, Bray F, Forman D, Mathers C, Parkin DM. Estimates of worldwide
501 burden of cancer in 2008: GLOBOCAN 2008. *International journal of cancer*
502 **2010**;127(12):2893-917 doi 10.1002/ijc.25516.
- 503 2. Sung H, Ferlay J, Siegel RL, Laversanne M, Soerjomataram I, Jemal A, *et al.* Global
504 Cancer Statistics 2020: GLOBOCAN Estimates of Incidence and Mortality Worldwide
505 for 36 Cancers in 185 Countries. *CA: a cancer journal for clinicians* **2021**;71(3):209-49
506 doi 10.3322/caac.21660.
- 507 3. ACS. *Cancer Facts & Figures 2014*. Atlanta, GA, USA: American Cancer Society; 2014.
- 508 4. Kamat AM, Hahn NM, Efstathiou JA, Lerner SP, Malmstrom PU, Choi W, *et al.* Bladder
509 cancer. *Lancet* **2016**;388(10061):2796-810 doi 10.1016/S0140-6736(16)30512-8.
- 510 5. Babjuk M, Burger M, Comperat EM, Gontero P, Mostafid AH, Palou J, *et al.* European
511 Association of Urology Guidelines on Non-muscle-invasive Bladder Cancer (TaT1 and
512 Carcinoma In Situ) - 2019 Update. *European urology* **2019**;76(5):639-57 doi
513 10.1016/j.eururo.2019.08.016.
- 514 6. Maas M, Bedke J, Stenzl A, Todenhofer T. Can urinary biomarkers replace cystoscopy?
515 *World journal of urology* **2019**;37(9):1741-9 doi 10.1007/s00345-018-2505-2.
- 516 7. Kaufman DS, Shipley WU, Feldman AS. Bladder cancer. *Lancet* **2009**;374(9685):239-49
517 doi 10.1016/S0140-6736(09)60491-8.
- 518 8. Ribal MJ, Cornford P, Briganti A, Knoll T, Gravas S, Babjuk M, *et al.* European
519 Association of Urology Guidelines Office Rapid Reaction Group: An Organisation-
520 wide Collaborative Effort to Adapt the European Association of Urology Guidelines
521 Recommendations to the Coronavirus Disease 2019 Era. *European urology*
522 **2020**;78(1):21-8 doi 10.1016/j.eururo.2020.04.056.
- 523 9. Freifeld Y, Lotan Y. Effect of blue-light cystoscopy on contemporary performance of
524 urine cytology. *BJU international* **2019**;124(2):251-7 doi 10.1111/bju.14574.
- 525 10. Christensen E, Birkenkamp-Demtroder K, Nordentoft I, Hoyer S, van der Keur K, van
526 Kessel K, *et al.* Liquid Biopsy Analysis of FGFR3 and PIK3CA Hotspot Mutations for
527 Disease Surveillance in Bladder Cancer. *European urology* **2017**;71(6):961-9 doi
528 10.1016/j.eururo.2016.12.016.
- 529 11. Chakraborty A, Dasari S, Long W, Mohan C. Urine protein biomarkers for the
530 detection, surveillance, and treatment response prediction of bladder cancer.
531 *American journal of cancer research* **2019**;9(6):1104-17.
- 532 12. Siwy J, Mullen W, Golovko I, Franke J, Zurbig P. Human urinary peptide database for
533 multiple disease biomarker discovery. *Proteomics Clinical applications* **2011**;5(5-
534 6):367-74 doi 10.1002/prca.201000155.
- 535 13. Latosinska A, Siwy J, Mischak H, Frantzi M. Peptidomics and proteomics based on CE-
536 MS as a robust tool in clinical application: The past, the present, and the future.
537 *Electrophoresis* **2019**;40(18-19):2294-308 doi 10.1002/elps.201900091.
- 538 14. Klein J, Papadopoulos T, Mischak H, Mullen W. Comparison of CE-MS/MS and LC-
539 MS/MS sequencing demonstrates significant complementarity in natural peptide
540 identification in human urine. *Electrophoresis* **2014**;35(7):1060-4 doi
541 10.1002/elps.201300327.
- 542 15. Dakna M, He Z, Yu WC, Mischak H, Kolch W. Technical, bioinformatical and statistical
543 aspects of liquid chromatography-mass spectrometry (LC-MS) and capillary
544 electrophoresis-mass spectrometry (CE-MS) based clinical proteomics: a critical
545 assessment. *Journal of chromatography B, Analytical technologies in the biomedical
546 and life sciences* **2009**;877(13):1250-8 doi 10.1016/j.jchromb.2008.10.048.
- 547 16. Theodorescu D, Wittke S, Ross MM, Walden M, Conaway M, Just I, *et al.* Discovery and
548 validation of new protein biomarkers for urothelial cancer: a prospective analysis. *The
549 Lancet Oncology* **2006**;7(3):230-40 doi 10.1016/S1470-2045(06)70584-8.
- 550 17. Schiffer E, Vlahou A, Petrolekas A, Stravodimos K, Tauber R, Geschwend JE, *et al.*
551 Prediction of muscle-invasive bladder cancer using urinary proteomics. *Clinical*

- 552 cancer research : an official journal of the American Association for Cancer Research
553 **2009**;15(15):4935-43 doi 10.1158/1078-0432.CCR-09-0226.
- 554 18. Frantzi M, Vlahou A. Ten Years of Proteomics in Bladder Cancer: Progress and Future
555 Directions. *Bladder cancer* **2017**;3(1):1-18 doi 10.3233/BLC-160073.
- 556 19. Frantzi M, van Kessel KE, Zwarthoff EC, Marquez M, Rava M, Malats N, *et al.*
557 Development and Validation of Urine-based Peptide Biomarker Panels for Detecting
558 Bladder Cancer in a Multi-center Study. *Clinical cancer research : an official journal*
559 *of the American Association for Cancer Research* **2016**;22(16):4077-86 doi
560 10.1158/1078-0432.ccr-15-2715.
- 561 20. Krochmal M, van Kessel KEM, Zwarthoff EC, Belczacka I, Pejchinovski M, Vlahou A, *et*
562 *al.* Urinary peptide panel for prognostic assessment of bladder cancer relapse.
563 *Scientific reports* **2019**;9(1):7635 doi 10.1038/s41598-019-44129-y.
- 564 21. Humphrey PA, Moch H, Cubilla AL, Ulbright TM, Reuter VE. The 2016 WHO
565 Classification of Tumours of the Urinary System and Male Genital Organs-Part B:
566 Prostate and Bladder Tumours. *European urology* **2016**;70(1):106-19 doi
567 10.1016/j.eururo.2016.02.028.
- 568 22. Brierley JD, Brierley JD, Gospodarowicz MK, Wittekind C. TNM Classification of
569 Malignant Tumours. Chichester: John Wiley & Sons, Incorporated; 2016. 1 online
570 resource (274 pages) p.
- 571 23. Babjuk M, Burger M, Compérat E, Gontero P, Mostafid AH, Palou J, *et al.* EAU
572 Guidelines on Non-muscle-invasive Bladder Cancer (TaT1 and CIS). EAU Guidelines
573 Office, Arnhem, The Netherlands.; 2018.
- 574 24. Argilés À, Siwy J, Duranton F, Gayraud N, Dakna M, Lundin U, *et al.* CKD273, a New
575 Proteomics Classifier Assessing CKD and Its Prognosis. *PLOS ONE* **2013**;8(5):e62837 doi
576 10.1371/journal.pone.0062837.
- 577 25. Neuhoff N, Kaiser T, Wittke S, Krebs R, Pitt A, Burchard A, *et al.* Mass spectrometry for
578 the detection of differentially expressed proteins: a comparison of surface-enhanced
579 laser desorption/ionization and capillary electrophoresis/mass spectrometry. *Rapid*
580 *communications in mass spectrometry : RCM* **2004**;18(2):149-56 doi 10.1002/rcm.1294.
- 581 26. Jantos-Siwy J, Schiffer E, Brand K, Schumann G, Rossing K, Delles C, *et al.* Quantitative
582 urinary proteome analysis for biomarker evaluation in chronic kidney disease. *Journal*
583 *of proteome research* **2009**;8(1):268-81 doi 10.1021/pr800401m.
- 584 27. Coon JJ, Zurbig P, Dakna M, Dominiczak AF, Decramer S, Fliser D, *et al.* CE-MS analysis
585 of the human urinary proteome for biomarker discovery and disease diagnostics.
586 *Proteomics Clinical applications* **2008**;2(7-8):964 doi 10.1002/prca.200800024.
- 587 28. DeLeo JM. Receiver operating characteristic laboratory (ROCLAB): Software for
588 developing decision strategies that account for uncertainty. *Uncertainty Modeling*
589 *and Analysis, 1993 Proceedings, Second International Symposium on* **1993**:318-25.
- 590 29. Ng K, Stenzl A, Sharma A, Vasdev N. Urinary biomarkers in bladder cancer: A review
591 of the current landscape and future directions. *Urologic oncology* **2021**;39(1):41-51
592 doi 10.1016/j.urolonc.2020.08.016.
- 593 30. Soria F, Droller MJ, Lotan Y, Gontero P, D'Andrea D, Gust KM, *et al.* An up-to-date
594 catalog of available urinary biomarkers for the surveillance of non-muscle invasive
595 bladder cancer. *World journal of urology* **2018**;36(12):1981-95 doi 10.1007/s00345-018-
596 2380-x.
- 597 31. Frantzi M, Latosinska A, Belczacka I, Mischak H. Urinary proteomic biomarkers in
598 oncology: ready for implementation? *Expert review of proteomics* **2019**;16(1):49-63
599 doi 10.1080/14789450.2018.1547193.
- 600 32. Konety B, Shore N, Kader AK, Porten S, Daneshmand S, Lough T, *et al.* Evaluation of
601 Cxbladder and Adjudication of Atypical Cytology and Equivocal Cystoscopy.
602 *European urology* **2019**;76(2):238-43 doi 10.1016/j.eururo.2019.04.035.
- 603 33. van der Heijden AG, Mengual L, Ingelmo-Torres M, Lozano JJ, van Rijt-van de Westerlo
604 CCM, Baixauli M, *et al.* Urine cell-based DNA methylation classifier for monitoring
605 bladder cancer. *Clinical epigenetics* **2018**;10:71 doi 10.1186/s13148-018-0496-x.
- 606 34. Grossman HB, Gomella L, Fradet Y, Morales A, Presti J, Ritenour C, *et al.* A phase III,
607 multicenter comparison of hexaminolevulinate fluorescence cystoscopy and white

608 light cystoscopy for the detection of superficial papillary lesions in patients with
609 bladder cancer. *The Journal of urology* **2007**;178(1):62-7 doi 10.1016/j.juro.2007.03.034.
610 35. Wang Z, Que H, Suo C, Han Z, Tao J, Huang Z, *et al.* Evaluation of the NMP22
611 BladderChek test for detecting bladder cancer: a systematic review and meta-
612 analysis. *Oncotarget* **2017**;8(59):100648-56 doi 10.18632/oncotarget.22065.
613 36. Dimashkieh H, Wolff DJ, Smith TM, Houser PM, Nietert PJ, Yang J. Evaluation of
614 urovysion and cytology for bladder cancer detection: a study of 1835 paired urine
615 samples with clinical and histologic correlation. *Cancer cytopathology*
616 **2013**;121(10):591-7 doi 10.1002/cncy.21327.
617 37. Yoder BJ, Skacel M, Hedgepeth R, Babineau D, Ulchaker JC, Liou LS, *et al.* Reflex
618 UroVysion testing of bladder cancer surveillance patients with equivocal or negative
619 urine cytology: a prospective study with focus on the natural history of anticipatory
620 positive findings. *American journal of clinical pathology* **2007**;127(2):295-301 doi
621 10.1309/ADJL7E810U1H42BJ.
622
623
624
625
626
627
628
629
630
631
632
633
634
635
636
637
638
639
640
641
642
643
644
645
646

647 **Table 1.** Clinical and demographical characteristics of the patients screened for primary
648 **(Study Arm I)** and recurrence BC **(Study Arm II)**.

649

650

	Number of recruited patients
Study Arm I: Evaluation of nomogram for detecting Primary BC	73
Primary BC patients (%)	27 (37.0)
Urological controls (%)	46 (63.0)
Median Age (IQR)	66 (16.5)
Gender (M/F; %)	52 M (71.2) / 21 F (28.8)
Stage classification (TNM) for primary BC*	
▪ Ta (%)	14 (51.9)
▪ T1 (%)	6 (22.2)
▪ T3 (%)	1 (3.7)
▪ Tis (%)	1 (3.7)
▪ Tx (%)	5 (18.5)
Grade classification for primary BC*	
▪ Low grade (%)	14 (51.9)
▪ High Grade (%)	10 (37.0)
▪ Gx (%)	3 (11.1)
Risk assessment for primary BC*	
▪ High risk (%)	11 (40.7)
▪ Low risk (%)	15 (55.6)
▪ Unknown (%)	1 (3.7)
Concomitant Tis (Yes/ No/ Unknown)	3 (11.1) / 13 (48.2) / 11 (40.7)
Cytology (Positive / Negative / NA)	14 (19.2) / 44 (60.3) / 15 (20.5)
Study Arm II: Evaluation of nomogram for detecting recurrent BC	478
Positive for recurrent BC (%)	83 (17.4)
Negative for recurrence (%)	395 (82.6)
Median Age (IQR)	71 (15)
Gender (M/F; %)	381 M (79.7) / 97 F (20.3)
Stage classification (TNM) for recurrent BC*	
▪ Ta (%)	58 (69.9)
▪ T1 (%)	11 (13.6)
▪ T2 (%)	3 (3.6)
▪ T4 (%)	1 (1.2)
▪ Tis (%)	10 (12.0)
Grade classification for recurrent BC*	
▪ Low grade (%)	55 (62.3)
▪ High Grade (%)	25 (30.1)
▪ Gx (%)	3 (3.6)
Risk assessment for recurrent BC*	
▪ High risk (%)	30 (36.1)
▪ Intermediate risk (%)	27 (32.5)
▪ Low risk (%)	25 (30.1)
▪ Unknown (%)	1 (1.2)
▪ Cytology (Positive / Negative / Atypia / NA)	33 (6.9) / 285 (59.6) / 19 (4.0) / 141 (29.5)
Excluded patients because of comorbidities	18
Excluded patients as TURB-T was not available to confirm cystoscopy	33
Total number of recruited patients	602

651 **Abbreviations:** **BC:** bladder cancer; **F:** female; **IQR:** interquartile range; **M:** male; **NA:** not available;
652 **TNM:** tumor, node, metastasis; **Tis:** carcinoma in situ; **TURB-T:** Transurethral resection of bladder tumor.
653 *Tumor grade and stage were determined according to WHO criteria (21) and TNM classification (22),
654 while the BC tumors were classified according to their risk of recurrence and progression into high,
655 intermediate, or low risk based on the EAU guidelines published in 2018 (23).

656

657

658

659

660

661

662

663

664

665

666

667

668

669

670

671

672

673

674

675

676

677

678

679

680

681

682

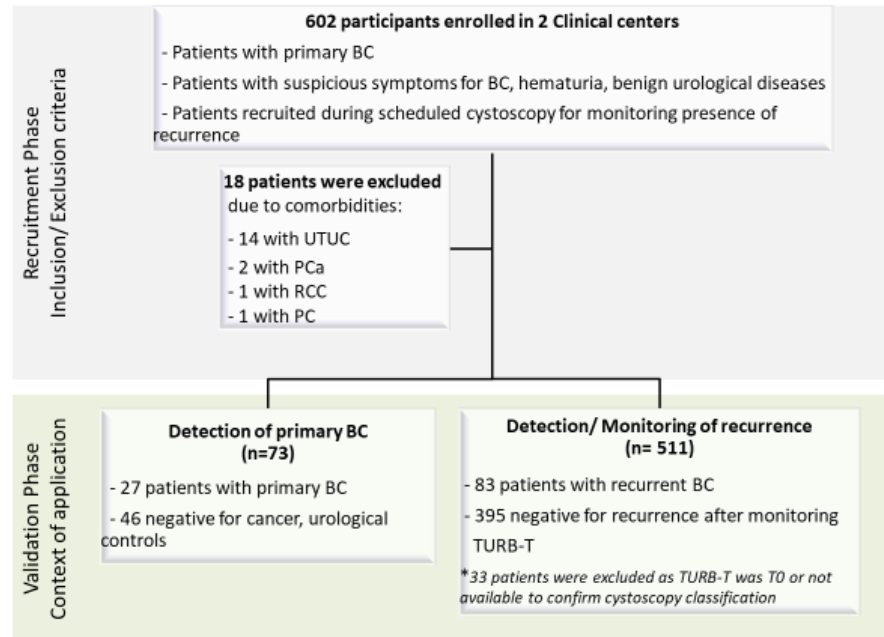
683

684

685

686 **Figures**

687



688

689

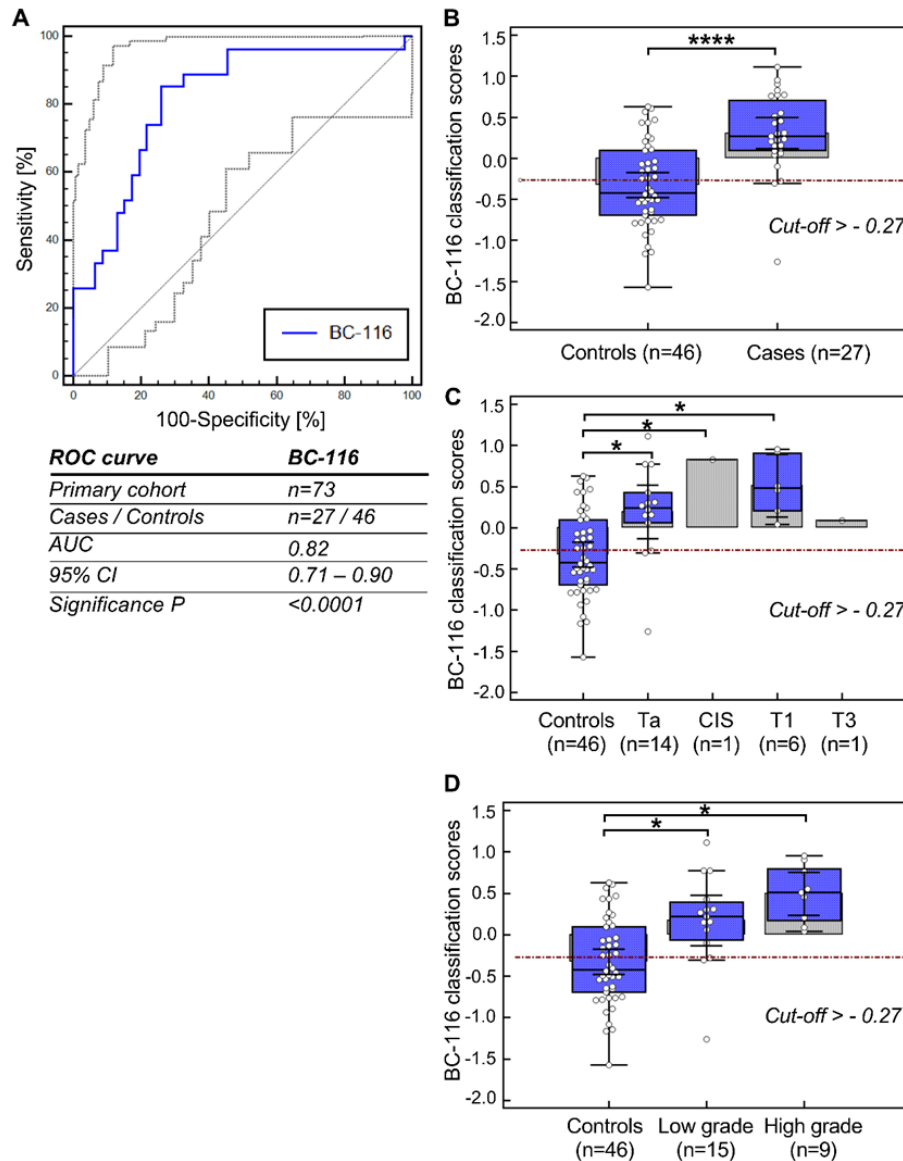
690

691

692 **Figure 1.** Schematic representation of the study workflow. Patients with primary BC,
693 recurrent BC and urological controls were enrolled at two different clinical centers
694 (Hospital Clinic of Barcelona and Radboud University Medical Center). Patients
695 encountering other comorbidities were excluded from this study (n=18). A total number
696 of 584 participants were considered for further analysis and stratified into two cohorts.
697 The primary cohort was consisted of patients with primary BC (n=73) whereas the
698 recurrent cohort comprised of patients with BC recurrences (n=83) and those negative
699 for recurrence controls (n=395). **Abbreviations: BC:** bladder cancer; **UTUC:** Upper
700 tract urothelial carcinoma; **PC;** pancreatic cancer; **PCa:** prostate cancer; **RCC:** renal cell
701 carcinoma; **TURBT:** trans urethral resection of bladder tumor.

702

It is made available under a [CC-BY-NC-ND 4.0 International license](https://creativecommons.org/licenses/by-nc-nd/4.0/).



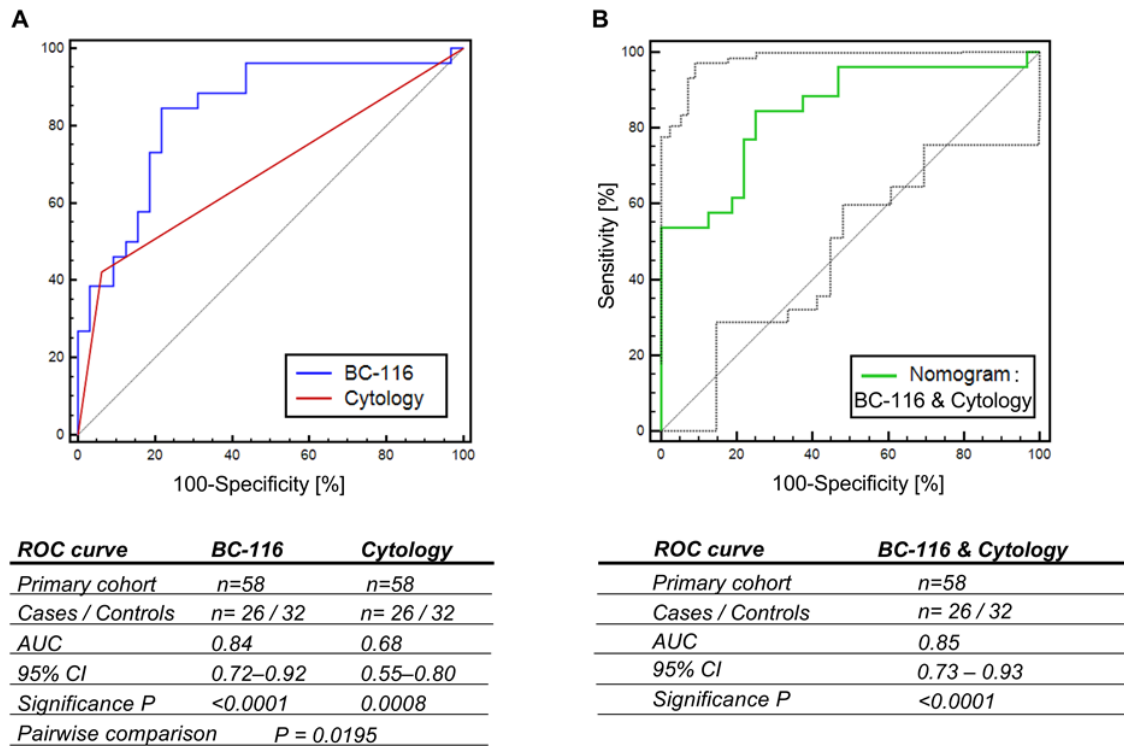
725

726 **Figure 2. A**, ROC curve analysis for the urinary biomarker panel BC-116 performed in
727 the primary cohort. The AUC, 95% CI, and P value for the classification of the BC
728 patients are also provided in the table shown in Panel **A**. **B-D**, Classification scores
729 presented in Box-and-Whisker displaying the level of discrimination between **B**) the
730 urothelial BC cases and the urologic controls, **C**) BC cases and controls according to
731 their TNM stage, and **D**) BC cases and controls considering their grade. The average
732 rank differences were significantly different (**** $P \leq 0.0001$ and * $P < 0.05$) as defined with
733 Kruskal-Wallis H test.

734

735

736



737

738

739

740 **Figure 3.**

741 **A**, ROC curves for the urinary BC-116 biomarker panel and the cytology as performed
 742 to those patients from the primary cohort with available cytological data. **B**, ROC curve
 743 for the integrative nomogram including the BC-116 biomarker panel and the cytology.
 744 The AUCs, 95% Cis, and P values are provided in the respective tables.

745

746

747

748

749

750

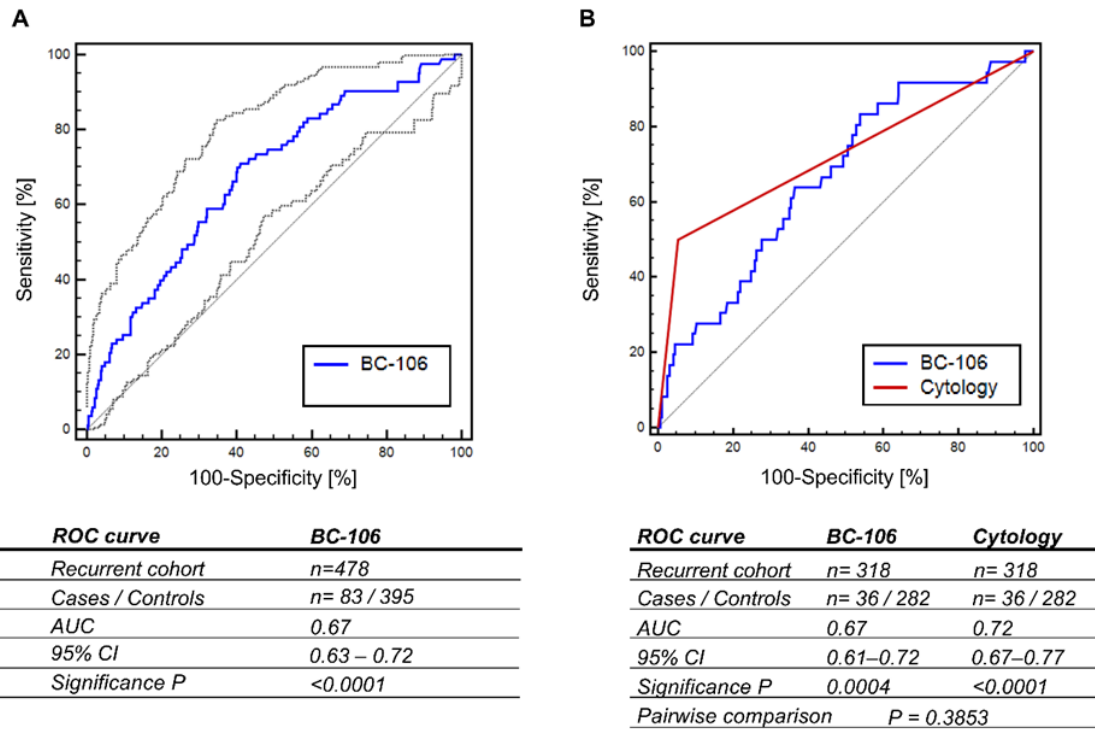
751

752

753

754

755



756

757

758

759

760

761 **Figure 4.**

762 **A**, ROC curve for the BC-106 urinary biomarker panel, consisting of 106 peptides as
 763 performed in the recurrent cohort. **B**, ROC curve analysis for the urinary BC-106
 764 biomarker panel as performed in those patients from the recurrence cohort with
 765 available cytological data. The AUCs, 95% Cis and P values are provided for the
 766 classification of recurrent BC patients.

767

768

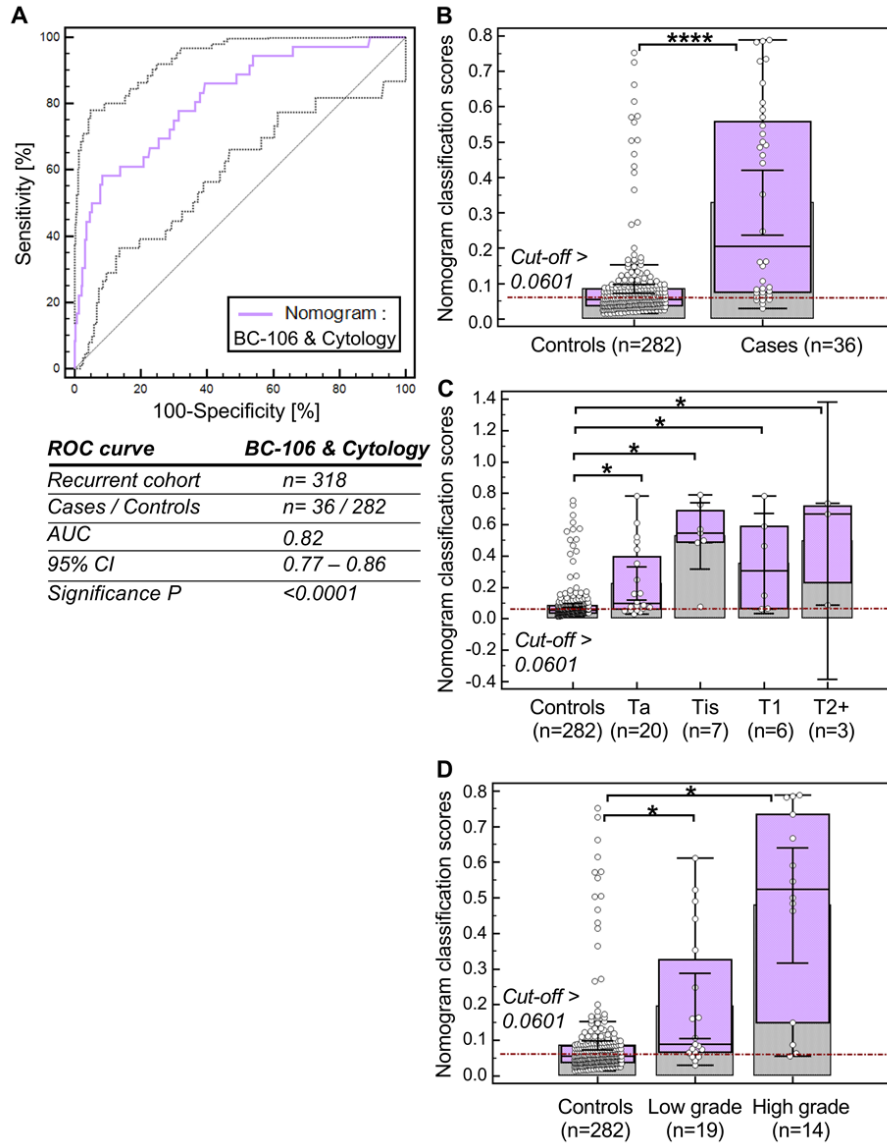
769

770

771

772

773



774

775 **Figure 5.**

776 **A**, ROC curve analysis for the integrative nomogram including the urinary BC-106
777 biomarker panel and cytology, as performed in 318 patients (consisted of 36 positive
778 and 282 negative for recurrence controls) with available cytological data from the
779 recurrent cohort. The AUC, 95% CI, and P value for the integrative nomogram are
780 provided in the table in panel A. **B-D**, Classification scores presented in Box-and-
781 Whisker displaying the level of discrimination between **B**) the recurrence BC cases and
782 the negative for recurrence controls, **C**) the recurrence BC cases and the negative for
783 recurrence controls among stage, and **D**) the recurrence BC cases and the negative for
784 recurrence controls among grade groups. The average rank differences were
785 significantly different ((**** $P \leq 0.0001$ and * $P = 0.05$) as defined by Kruskal-Wallis H test.

786 **Supplementary Files**

787

788 **Supplementary Table S1.** Clinical and demographical data for the 73 samples from
789 patients with primary BC.

790

791 **Supplementary Table S2.** Clinical and demographical data for the urine samples (n=
792 478) from recurrent BC patients.

793

794 **Supplementary Table S3.** List of scoring data for 73 patients with primary BC and 478
795 patients that were screened for recurrent BC.