

Integrated Analyses of Growth Differentiation Factor-15 Concentration and Cardiometabolic Diseases in Humans

Susanna Lemmelä^{1*}, Eleanor M. Wigmore^{2*}, Christian Benner¹, Aki Havulinna^{1,3}, Rachel M. Y. Ong⁴, Tibor Kempf⁵, Kai C. Wollert⁵, Stefan Blankenberg⁶, Tanja Zeller⁶, James E. Peters^{7,8}, Veikko Salomaa³, Maria Fritsch⁹, Ruth March¹⁰, Aarno Palotie^{1,11,12}, Mark Daly^{1,11,12}, Adam S. Butterworth^{4,8,13,14}, Mervi Kinnunen¹, Dirk S. Paul^{2,4,13}, Athena Matakidou²

Affiliations:

¹Institute for Molecular Medicine Finland (FIMM), University of Helsinki, Finland.

²Centre for Genomics Research, Discovery Sciences, BioPharmaceuticals R&D, AstraZeneca, Cambridge, UK.

³Finnish Institute for Health and Welfare, Helsinki, Finland.

⁴British Heart Foundation Cardiovascular Epidemiology Unit, Department of Public Health and Primary Care, University of Cambridge, Cambridge, UK

⁵Department of Cardiology and Angiology, Hannover Medical School, Germany.

⁶Clinic for General and Interventional Cardiology, University Heart Centre, Hamburg, Germany.

⁷Department of Immunology and Inflammation, Faculty of Medicine, Imperial College London, London, UK

⁸Health Data Research UK Cambridge, Wellcome Genome Campus and University of Cambridge, Cambridge, UK.

⁹Bioscience Renal, Research and Early Development Cardiovascular, Renal and Metabolism (CVRM), BioPharmaceuticals R&D, AstraZeneca, Gothenburg, Sweden.

¹⁰Precision Medicine, Oncology R&D, AstraZeneca, Cambridge, UK.

¹¹Analytic and Translational Genetics Unit, Department of Medicine, Massachusetts General Hospital, Boston, MA, USA.

¹²Program in Medical and Population Genetics, Broad Institute of MIT and Harvard, Cambridge, MA, USA.

¹³British Heart Foundation Centre of Research Excellence, University of Cambridge, Cambridge, UK.

¹⁴National Institute for Health Research Blood and Transplant Research Unit in Donor Health and Genomics, University of Cambridge, Cambridge, UK.

*Susanna Lemmelä
FIMM,
University of Helsinki
Helsinki
Finland

susanna.lemmela@helsinki.fi

*Eleanor M. Wigmore
Centre for Genomics Research, Discovery Sciences
AstraZeneca
Cambridge
UK

eleanor.wigmore@astrazeneca.com

Abstract

Growth differentiation factor 15 (GDF15) is a stress response cytokine that is elevated in several cardiometabolic diseases and has attracted interest as a potential therapeutic target. To further explore the association of GDF15 with human disease, we conducted a broad study into the phenotypic and genetic correlates of GDF15 concentration in up to 14,099 individuals. Assessment of 772 traits across 6,610 participants in FINRISK identified associations of GDF15 concentration with a range of phenotypes including all-cause mortality, cardiometabolic disease, respiratory diseases and psychiatric disorders as well as inflammatory markers. A meta-analysis of genome-wide association studies (GWAS) of GDF15 concentration across 3 different assay platforms (n=14,099) confirmed significant heterogeneity due to a common missense variant rs1058587 in *GDF15*, potentially due to epitope-binding artefacts. After conditioning on rs1058587, statistical fine-mapping identified 4 independent putative causal signals at the locus. Mendelian randomisation (MR) analysis did not find evidence of a causal relationship between GDF15 concentration and cardiometabolic traits. Using reverse MR, we identified a potential causal association of body mass index on GDF15 (IVW $p_{\text{FDR}}=0.0072$). Taken together, our data do not support a role for elevated GDF15 concentrations as a causal factor in human cardiometabolic disease but support its role as a biomarker of metabolic stress.

1 **[Main Text:]**

2 **Introduction**

3 Obesity accounts for an estimated 2.8 million deaths worldwide and 2.3% of global disability-
4 adjusted life years (Organisaton.). Obesity has been causally linked to a variety of cardiometabolic
5 risk factors and diseases, including fasting insulin, systolic blood pressure and type 2 diabetes
6 (Holmes et al., 2014). Therefore, interventions to reduce obesity are recommended in the
7 management of these diseases (Yumuk et al., 2016). Currently, the most effective obesity
8 intervention is bariatric surgery (Jammah, 2015); however, its clinical utility is limited as it is
9 highly invasive and accompanied by a high risk of long-term complications such as
10 gastroesophageal reflux disease and nutritional deficiencies (Mesureur & Arvanitakis, 2017). New
11 therapies such as GLP-1 receptor agonists aim to target obesity via appetite suppression but are
12 associated with common side effects including nausea and diarrhoea (Wilding et al., 2021). The
13 development of additional therapeutic strategies targeting obesity as an underlying cause and
14 pathology of cardiometabolic disease represents an area of unmet clinical need.

15 GDF15, a distant member of the transforming growth factor- β family (Bootcov et al., 1997;
16 Emmerson, Duffin, Chintharlapalli, & Wu, 2018), is upregulated in response to cellular stress and
17 several diseases, including cancer. It has been suggested that GDF15 functions as a stress response
18 agent implicated in organ injury (Kempf et al., 2006; V. W. W. Tsai, Husaini, Sainsbury, Brown,
19 & Breit, 2018; Zimmers et al., 2005). GDF15 was originally identified to play a role in tumour-
20 induced anorexia/cachexia in mice through appetite regulation (Johnen et al., 2007). The body
21 weight reduction is considered to be mainly driven by food intake inhibition mediated by its
22 receptor GDNF-family receptor alpha like (GFRAL) in distinct areas of the brainstem (Emmerson
23 et al., 2017; Hsu et al., 2017; Mullican et al., 2017; Yang et al., 2017). GDF15 plasma levels are
24 elevated in animal models of obesity (Lockhart, Saudek, & O'Rahilly, 2020; Xiong et al., 2017),
25 and administration of recombinant protein robustly lowers body weight in obese and diabetic
26 animals, including non-human primates (Mullican et al., 2017; Xiong et al., 2017). The beneficial
27 effects on glycemic control is considered to be mediated mainly by the body weight loss. Genetic
28 overexpression of Gdf15 results in decreased body weight and increased resistance to obesity

29 associated with high-fat diets, whereas Gdf15 and Gfral deficient mice are more susceptible to
30 diet-induced obesity (Mullican et al., 2017; O'Rahilly, 2017; Tran, Yang, Gardner, & Xiong, 2018).
31 Recent preclinical work has identified GDF15's role as a sentinel protein, upregulated in response
32 to various ingested toxins triggering nausea-related behaviour in rodents assessed by pica and CTA
33 (Conditioned Taste Aversion) (Borner, Wald, et al., 2020; Patel et al., 2019).

34 There is a lack of data supporting the treatment effect of GDF15 in humans. However,
35 observational studies have revealed strong positive correlations of GDF15 plasma levels with body
36 mass index (BMI), insulin resistance, age and mean arterial blood pressure (in obese individuals)
37 (V. W. Tsai et al., 2015; Vila et al., 2011). Higher GDF15 levels have also been associated with
38 all-cause mortality as well as mortality associated with heart failure and acute myocardial
39 infarction, cancer, advanced heart failure and end-stage chronic kidney disease (Adela & Banerjee,
40 2015; Khan et al., 2009; Nair et al., 2017; Wiklund et al., 2010). Metformin therapy, a type 2
41 diabetes treatment, has been shown to depend on GDF15 to lower body weight in mice and plasma
42 GDF15 levels increased up to 40% upon metformin therapy in humans (Coll et al., 2020; Day et
43 al., 2019). Recent data suggest that GDF15 is involved in hyperemesis gravidarum (Fejzo, Arzy,
44 Tian, MacGibbon, & Mullin, 2018), supporting the hypothesis that GDF15 triggers anorexia and
45 subsequent weight loss, at least partly, through the induction of malaise (Borner, Shaulson, et al.,
46 2020). Mendelian randomisation (MR) has previously been applied to explore the causal
47 relationship of GDF15 levels and cardiometabolic diseases, with causal associations reported for
48 high-density lipoprotein (HDL) cholesterol and bone mineral density (BMD) (Cheung, Tan, Au,
49 Li, & Cheung, 2019; Folkersen et al., 2020). However, these analyses were based on small genetic
50 studies for GDF15 and have not been replicated.

51 In this study, we used data from several large biobanks to conduct a systematic and extensive
52 phenotypic and genotypic analysis of GDF15 with cardiometabolic traits and diseases, and to
53 ascertain the causal relationship between GDF15 levels and cardiometabolic traits using MR and
54 protein-truncating variant (PTV) analysis.

55

56 Results

57 Association of GDF15 plasma levels with 676 disease outcomes

58 To systematically assess the relationship between GDF15 plasma levels and clinical phenotypes,
59 we utilised a large Finnish biobank, FINRISK. The FINRISK cohort comprises a cross-sectional
60 population survey carried out over a 40-year period in Finland. GDF15 plasma levels were
61 available for 6,610 participants from the 1997 recruitment cohort linked to 676 disease outcomes
62 and were included in this analysis.

63 The median GDF15 concentration (measured using an immunoluminometric assay) was 796ng/L
64 (interquartile range, IQR= 664-986) (Supplementary Figure S1). First, we examined the
65 association of baseline characteristics with GDF15 plasma levels (Supplementary Table S1). Age
66 explained 28% of the observed GDF15 variance, with current smoking and BMI accounting for
67 1.9% and 0.08% of the variance, respectively (Supplementary Table S2). Gender did not show a
68 significant association. All subsequent analyses have been corrected for these covariates (age,
69 gender, smoking and BMI). Analyses corrected for age and gender alone are also presented for
70 comparison (Supplementary Table S3 and S4), although results were similar.

71 We then investigated potential associations of GDF15 plasma levels with a range of disease
72 phenotypes (both prevalent and incident), focusing on the phenotypes defined by the FinnGen
73 consortium (T, Lahtela E, Havulinna AS, & Consortium., 2020), as these endpoints have
74 undergone additional clinical validation (see Methods). A total of 676 disease endpoints were
75 examined as dependent variables in association analyses with GDF15 plasma levels (the
76 independent variable). After multiple-testing correction using false discovery rate (FDR, $P_{FDR} <$
77 0.05), GDF15 was significantly associated with 80 disease endpoints (Table 1 and Supplementary
78 Table S5).

79 The most significant clinical associations observed were with all-cause mortality (logistic
80 regression odds ratio, OR=1.8, CI=1.7 – 1.9, p -value= 9.8×10^{-27}) and mortality due to cardiac
81 diseases (OR=1.8, CI=1.6 – 1.9, p -value= 7.7×10^{-14}). We also observed significant associations
82 between GDF15 levels and type 2 diabetes (OR=1.5, CI=1.3 – 1.6, p -value= 2.2×10^{-9}). Further,

83 GDF15 plasma levels were significantly associated with cardiovascular diseases (OR=1.2,
84 CI=1.1–1.2, p -value= 5.6×10^{-6}), as well as subtype endpoints such as atherosclerosis, hypertension,
85 peripheral artery disease and stroke, and chronic kidney disease (OR=2.46, CI=2.1–2.8, p -
86 value= 4.4×10^{-6}) (Table 1). Additional positive associations were observed with respiratory
87 diseases, such as chronic obstructive pulmonary disease (COPD) and pneumonia, and psychiatric
88 disorders, including schizophrenia and mental and behavioural disorders due to psychoactive
89 substance use. Cancer phenotypes were also associated with GDF15 levels, including malignant
90 neoplasm of the respiratory system and intrathoracic organs (OR=1.6, CI=1.3–1.8, p -value=0.0015)
91 and malignant neoplasm of the bronchus and lung (OR=1.6, CI=1.3–1.9, p -value=0.0029).

92 **GDF15 plasma concentration associates with prevalent and incident type 2 diabetes and** 93 **independently predicts all-cause mortality and cardiometabolic diseases**

94 To determine the prognostic potential of GDF15 in predicting incident diabetes, we investigated
95 its plasma levels in relation to prevalent and incident type 2 diabetes in the FINRISK cohort. Type
96 2 diabetics (prevalent cases) had a 1.3-fold increase in median GDF15 levels compared to non-
97 diabetic controls (median difference=222ng/L). Furthermore, GDF15 levels were significantly
98 higher in prevalent diabetics (diagnosed at plasma sampling, $n=37$; median=1,204ng/L) compared
99 to both incident cases (diagnosed after plasma sampling, $n=500$; median= 992ng/L; Wilcoxon p -
100 value=0.008) and non-diabetic controls ($n=6003$; 784ng/L; Wilcoxon p -value= 5.2×10^{-11})
101 (Supplementary Figure S2). GDF15 plasma levels were also significantly higher in incident cases
102 than in non-diabetic controls (Wilcoxon p -value= 6.2×10^{-51}). Together, these data indicate that
103 increased GDF15 plasma levels could represent an early biomarker in pre-diabetic individuals.

104 Next, we carried out a Cox regression survival analysis on all-cause mortality, type 2 diabetes and
105 cardiovascular disease. During a 10-year follow-up period, 393 (6%) study subjects had died, 97
106 (2%) developed diabetes and 438 (7%) developed cardiovascular disease. Models accounted for
107 blood pressure medication, smoking, total cholesterol, HDL cholesterol, BMI, prevalent
108 cardiovascular disease and mean systolic blood pressure. Our results revealed that GDF15 plasma
109 concentration is an independent predictor of all-cause mortality (hazard ratio, HR=1.7, p -
110 value= 9.2×10^{-12}), type 2 diabetes (HR=1.40, p -value=0.02) and cardiovascular disease (HR=1.4,

111 p -value= 1.5×10^{-6} , Figure 1, Supplementary Table S6 and Figure S3). Individuals with GDF15
112 plasma levels above 967ng/L (the upper quartile) were more than twice as likely to develop type
113 2 diabetes compared to individuals with lower levels (HR=2.2, CI=1.4–3.5, p -value= 7.1×10^{-4}).

114 **Association of GDF15 plasma levels with 96 quantitative biomarkers**

115 We then performed an association analysis of GDF15 plasma levels with 96 quantitative
116 biomarkers in FINRISK. After multiple-testing correction ($P_{FDR} < 0.05$), significant associations
117 were observed with 45 biomarkers, most notably, with blood markers known to be associated
118 with inflammation (Supplementary Table S7).

119 The most significantly associated biomarkers were mid-regional pro-adrenomedullin (MR-
120 proADM, beta=0.24, p -value= 1.2×10^{-91}), C-reactive protein (CRP, beta=0.22, p -value= 4.6×10^{-64})
121 and hepatocyte growth factor (HGF, beta=0.17, p -value= 4.2×10^{-43}). All three markers have been
122 previously reported to be non-specifically elevated in a number of human diseases and have
123 known prognostic value (Jackson et al., 2016; Madonna, Cevik, Nasser, & De Caterina, 2012;
124 Matsumoto, Umitsu, De Silva, Roy, & Bottaro, 2017; Miller, Redfield, & McConnell, 2007;
125 Peacock, 2014). Significant associations were also observed between GDF15 and components of
126 metabolic syndrome, specifically, levels of triglycerides (beta=0.13, p -value= 2.4×10^{-22}), fasting
127 insulin (beta=0.10, p -value= 1.2×10^{-13}) and waist-to-hip ratio (beta= 0.049, p -value= 7.0×10^{-10}).

128 **Genome-wide association studies of plasma levels of GDF15 quantified using 3 different** 129 **assays in 2 independent cohorts**

130 We performed genome-wide association studies (GWAS) to identify the genetic determinants of
131 GDF15 plasma levels using two independent cohorts (FINRISK and INTERVAL) and three
132 GDF15 quantification methodologies (immunoluminometric assay in FINRISK and Olink and
133 SomaScan proteomic assays in INTERVAL; see Supplementary Materials). Results from
134 individual GWAS analyses are reported in Supplementary Tables S8-10. We then performed a
135 meta-analysis of the genome-wide significant variants identified in the GWAS performed in the
136 FINRISK, INTERVAL-SomaScan and INTERVAL-Olink cohorts to generate a combined statistic
137 and heterogeneity value. The analysis identified four genetic variants (rs1059369, rs1054221,

138 rs1227734, rs189593084) at the *GDF15* locus to be associated with GDF15 plasma levels (*p*-
139 value $<5\times 10^{-8}$) (Supplementary Table S11).

140 Two variants had a strengthened signal in the combined meta-analysis, rs1054221 and rs1227734
141 (Supplementary Table S11), However, five genetic associations, which were genome-wide
142 significant for two of the three GWAS, displayed substantial heterogeneity, e.g. rs16982345
143 (heterogeneity $I^2=99.8\%$, heterogeneity *p*-value $=7.6\times 10^{-180}$; Supplementary Table S11). By
144 exploring the LD structure between the heterogeneous variants (Supplementary Table S12), we
145 found that these variants were all located within the same LD block that included the missense
146 variant rs1058587 (p.H202D). Heterogeneity in GWAS results of GDF15 levels has been observed
147 in other studies (Jiang et al., 2018; Pietzner et al., 2020) and significant variations in GDF15
148 antibody binding affinity dependent on rs1058587 have been previously reported (Fairlie et al.,
149 2001).

150 **Mitigation of epitope binding effects due to the rs1058587 missense variant**

151 To remove any potential epitope effects, we applied conditional analysis on rs1058587 when
152 linking plasma GDF15 concentrations with disease phenotypes and quantitative traits. A total of
153 59 significant disease associations and 43 biomarker associations were identified. These
154 associations largely did not differ from the unconditioned results, although 21 fewer disease
155 associations reached significance (Supplementary Table S13-14).

156 To minimize confounding of the GWAS results from rs1058587 epitope effects, we conditioned
157 the association signal on chromosome 19 on rs1058587 in both FINRISK (Supplementary Table
158 S15) and INTERVAL-SomaScan (Supplementary Table S16). INTERVAL-Olink did not have a
159 significant association at this LD block. We then meta-analysed these conditioned GWAS.
160 Manhattan and Quantile-Quantile (QQ) plots of this GWAS meta-analysis are shown in Table 2,
161 Supplementary Figure S4 and Supplementary Table S15. We found 146 significant associations in
162 this region, with rs1227734 identified as the strongest association (beta=0.50, *p*-value $=2.5\times 10^{-187}$).

163 Fine-mapping this conditioned meta-analysis revealed four association signals with a causality
164 probability of 0.86. The top configuration consisted of variants rs1054221 (beta=-0.50, *p*-

165 value= 2.4×10^{-184}), rs3787023 (beta=0.04, p -value=0.0017), rs138515339 (beta=-0.27, p -
166 value= 3.2×10^{-11}) and rs141542836 (beta=0.61, p -value= 1.9×10^{-40}) and had a regional heritability
167 of 7%. Functional annotation and eQTL information can be found in Supplementary Table S18
168 and the Supplementary materials, respectively.

169 **Mendelian randomisation analysis reveals no causal relationship between GDF15 plasma** 170 **levels and cardiometabolic traits**

171 Observed associations of GDF15 plasma levels with obesity-related diseases have been presented
172 here and found in previous reports (V. W. Tsai et al., 2015; Vila et al., 2011) and variants in the
173 *GDF15* gene region have been associated with cardiovascular traits, cholesterol, waist-hip-ratio
174 (WHR) and BMI (Wang et al., 2021). We therefore applied MR to assess the relationship between
175 genetically-determined GDF15 plasma levels and BMI, WHR, glucose and type 2 diabetes. We
176 also included HDL cholesterol and BMD as additional outcomes in our MR analysis due to the
177 positive MR results in previous studies (Cheung et al., 2019; Folkersen et al., 2020).

178 We applied two-sample MR (Bowden, Davey Smith, & Burgess, 2015) using LD clumping ($R^2 <$
179 0.1, within 1.5Mb of either side of the lead SNP) and identified eight independent genetic
180 instruments from the conditioned meta-analysis on chromosome 19: rs1227734, rs62122429,
181 rs1059022, rs181004295, rs75119307, rs11673678, rs138185133 and rs73923175 (regional
182 heritability=0.071). Association statistics between the conditioned instrumental variables (IVs)
183 and exposure (GDF15) were taken from the above meta-analysis, and the association statistics
184 between the IVs and outcome were extracted from publicly available GWAS summary statistics
185 (see Methods). These values were applied to a fixed effect inverse variance weighted (IVW) MR,
186 as well as MR-Egger and MR-PRESSO methods (Verbanck, Chen, Neale, & Do, 2018) , in order
187 to detect horizontal pleiotropy. MR using the conditioned variants did not find significant
188 associations of genetically-determined GDF15 plasma levels with any of the examined traits. A
189 nominal association was found with WHR but this did not pass multiple-testing correction (Table
190 3). Horizontal pleiotropy was detected in the association of genetically-determined GDF15 plasma
191 levels with BMI (Global pleiotropy test p -value=0.012), HDL cholesterol (Global pleiotropy test
192 p -value=0.021) and BMD (Global pleiotropy test p -value=0.010) using MR-PRESSO but not MR-

193 Egger. We did not replicate findings of causality of genetically-determined GDF15 plasma levels
194 with BMD and HDL cholesterol, despite two independent studies suggesting otherwise (Cheung
195 et al., 2019; Folkersen et al., 2020).

196 **Reverse Mendelian randomisation analysis identifies BMI as a causal factor for GDF15** 197 **plasma levels**

198 We applied reverse two-sample MR (as described above) using GDF15 plasma levels as the
199 outcome variable to assess associations with BMI, WHR, glucose, diabetes, HDL cholesterol and
200 BMD. GDF15 GWAS summary statistics were taken from the conditioned meta-analysis of
201 GDF15 levels in FINRISK and INTERVAL. LD clumping was used to identify the genetic
202 instruments (see Methods). We found a significant association between higher genetically-
203 predicted BMI and higher GDF15 plasma levels (IVW estimate=0.089, $p_{FDR}=0.0072$) but not any
204 other tested trait (Table 4). Sensitivity analyses in MR-PRESSO but not MR-Egger analysis
205 confirmed the association with BMI (p -value>0.05). MR-Egger identified horizontal pleiotropy
206 with WHR, however, MR-PRESSO identified horizontal pleiotropy with every trait other than
207 BMD. The finding of horizontal pleiotropy in MR-PRESSO but not MR-Egger suggests that the
208 causal of an apparent causal effect of BMI on GDF15 plasma levels warrants replication in larger
209 cohorts.

210 **Effect of GDF15 protein-truncating variants on cardiometabolic traits in 302,388** 211 **participants of UK Biobank**

212 Carriers of *GDF15* protein-truncating variants (PTVs) present an opportunity to explore the
213 phenotypic consequences of predicted loss-of-function (LOF) of GDF15 on human disease. We
214 analysed whole-exome sequencing data from 302,388 participants from the UK Biobank, of whom
215 109 carried *GDF15* PTVs in the heterozygous state (Supplementary Table S19). We assessed
216 differences in BMI, WHR, glucose, BMD, HDL cholesterol and type 2 diabetes between carriers
217 and non-carriers using the Mann-Whitney U test. The analysis was restricted to unrelated
218 individuals of European ancestry, leaving 91 carriers of *GDF15* PTVs (male N=42, female N=49,
219 mean age=56.3) and 40,000 randomly selected European-ancestry non-carriers (male N=20,000,

220 female N=20,000, mean age=56.9). In line with the MR analyses we observed no differences in
221 BMI (mean difference=0.1, p -value=0.90), WHR (male: mean difference=0.01, p -value=0.64,
222 female: mean difference=0.01, p -value=0.55), glucose (mean difference=0.14, p -value=0.32),
223 BMD (mean difference=0.02, p -value=0.82), HDL cholesterol (mean difference=0.08, p -
224 value=0.08) or self-reported diabetes (N of diabetes in cases=2, p -value=0.12), suggesting that
225 mono-allelic *GDF15* LOF does not have a strong effect on these traits.

226

227 **Discussion**

228 In this study, we present a systematic phenotypic and genotypic analysis of GDF15 with a wide
229 range of health outcomes and biomarkers. In line with previous findings, our analysis confirmed
230 strong correlations of GDF15 plasma levels with a range of clinical parameters (e.g. age, smoking
231 and BMI) and human diseases (e.g. diabetes, cardiovascular and respiratory disease), as well as
232 several inflammatory biomarkers. As preclinical data in mice strongly implicated Gdf15 in the
233 aetiology of obesity and glucose tolerance, we specifically investigated whether human genetic
234 evidence supports these findings. Using data from large biobanks, we found that neither MR nor
235 *GDF15* PTV analyses supported a causal role for GDF15 plasma levels within the normal range
236 in influencing BMI, WHR, glucose, diabetes, HDL cholesterol or BMD in humans. Instead, we
237 found that higher BMI may cause increases in GDF15 plasma levels highlighting the role of
238 GDF15 as a likely marker of metabolic stress in humans.

239 Access to the FINRISK cohort provided a valuable opportunity to explore GDF15 plasma level
240 associations with multiple phenotypes within a single large population. We found the strongest
241 associations with all-cause mortality and cardiometabolic diseases (cardiovascular disease and
242 diabetes), as well as cardiometabolic risk factors (e.g. hypertension, triglycerides, BMI), as
243 previously reported (Bonaca et al., 2011; Brown et al., 2002; Daniels, Clopton, Laughlin, Maisel,
244 & Barrett-Connor, 2011; Ho et al., 2012; Kempf et al., 2007; Khan et al., 2009; Lind et al., 2009;
245 Rohatgi et al., 2012; Wiklund et al., 2010; Wollert et al., 2007). Our analyses also found that
246 GDF15 plasma levels are is a strong predictor of incident diabetes and an independent predictor
247 of all-cause mortality, cardiovascular disease and diabetes morbidity, suggesting its potential use
248 as a pre-diabetic prognostic biomarker. We found associations with neoplasms of the lung and
249 digestive system but not with other types of cancer. Our data further support the association of
250 GDF15 plasma levels with inflammatory phenotypes and biomarkers (CRP, mid-regional pro-
251 adrenomedullin) (Brown et al., 2007) and uncovered less well-described associations with
252 respiratory disease and psychiatric disorders. Despite previous observations suggesting a role for
253 GDF15 in anorexia (Borner, Shaulson, et al., 2020), we did not identify any association of GDF15
254 plasma levels with this trait. However, we note that statistical power may have been limited due
255 to the low number of cases (Supplementary Table S5). To identify phenotype associations in an

256 unbiased way, we performed analyses encompassing all phenotypes available applying covariates
257 uniformly across all analyses. We note that covariates specific to a particular disease might have
258 been omitted introducing bias or leading to inflation or deflation of statistics. We detected a strong
259 association between GDF15 levels and smoking, which was recorded and adjusted in our analyses
260 as a binary phenotype. Smoking is an important contributing factor in multiple diseases and it is
261 therefore likely that adjustment as a continuous variable would have been able to better explain
262 the contribution of smoking to the phenotypic association signals, especially in respiratory disease,
263 lung cancer and some psychiatric disorders. These findings demonstrate that GDF15 plasma levels
264 are a general marker for risk in multiple diseases and are associated with non-specific biomarkers
265 such as CRP.

266 To define the genetic architecture of plasma GDF15 levels, we performed a GWAS meta-analysis
267 in two large cohorts, FINRISK and INTERVAL, across three different assay platforms. A striking
268 finding of this analysis was the substantial heterogeneity between variants across these studies,
269 consistent with previous reports (Jiang et al., 2018). Exploring the LD between the variants
270 displaying heterogeneity (Supplementary Figure S6) identified that a large proportion resided
271 within an LD block encompassing a common missense variant, rs1058587 (p.H202D). This variant
272 has been previously associated with hyperemesis gravidarum (Fejzo, Sazonova, et al., 2018) but
273 the presence of this missense variant within this locus raises the possibility of epitope artefacts,
274 indeed a previous study has identified epitope effects in this region (Fairlie et al., 2001). Therefore,
275 it is highly likely that the inconsistency in GWAS results across this locus is driven by differences
276 in the properties of the GDF15 assay used in each study (immunoluminometric assay in FINRISK,
277 SomaScan and Olink assays in INTERVAL). Therefore, it may be beneficial to adopt a more
278 consistent method for measuring GDF15 levels within the research environment. Approaches to
279 assay protein levels that don't involve binding to epitopes, such as mass spectrometry, will be
280 informative for avoiding potential artefacts due to protein-altering variants in the future.

281 Our analyses did not reveal a causal role for GDF15 plasma levels with any of these
282 cardiometabolic phenotypes. These results were further supported by the lack of association
283 between these phenotypes and *GDF15* PTV carriers in the UK Biobank dataset. This is consistent
284 with a recent large-scale, pan-ancestry exome-sequencing study of over 640,000 individuals
285 exploring the associations of rare coding variants with BMI that did not report an association with

286 GDF15 (Akbari et al., 2021). However, a meta-analysis completed by Cheung *et al.* (Ho et al.,
287 2012) did identify significant associations of genetically-predicted GDF15 levels with HDL
288 cholesterol (beta=-0.048, *p*-value=0.001) and estimated BMD (beta=0.026, *p*-value<0.001) which
289 we did not replicate. The inclusion of differing covariates could have influenced the results of
290 these analyses; our genetic analysis included only age, gender and principal components as
291 covariates whereas the meta-analysis by Cheung *et al.* included age, gender, systolic blood
292 pressure, antihypertensive medication use, diabetes mellitus and smoking status. Nevertheless, the
293 larger sample size of the study presented here (n=14,099) offered considerably improved statistical
294 power over this previous study (n=3,889).

295 This lack of causal association with GDF15 plasma levels suggests that GDF15 may behave
296 differently in humans compared to rodents and non-human primates, where there are robust data
297 demonstrating that GDF15 potently reduce body weight. GDF15 levels have also been
298 demonstrated to provoke nausea-related pica and CTA responses in rat and mice, respectively
299 (Borner, Shaulson, et al., 2020; Patel et al., 2019), as well as vomiting in shrews, *suncus murinus*,
300 but studies in non-human primates report no signs of nausea (Xiong et al., 2017). Several clinical
301 trials testing the safety and efficacy of GDF15 therapy have been planned or initiated but no data
302 have yet been disclosed. Nevertheless, body weight loss in pregnant women suffering from
303 hyperemesis gravidarium has been linked with higher plasma GDF15 levels (Fejzo, Arzy, et al.,
304 2018). In FINRISK, information on nausea was not available but diseases with nausea as the main
305 symptom were available (such as gastroesophageal reflux disease) and no significant association
306 with GDF15 plasma levels was found (OR=1.1, *p*=0.63). In pregnancy GDF15 levels are found at
307 much higher serum levels than normal (A. G. Moore et al., 2000) and it is therefore possible that
308 at higher levels GDF15 may induce nausea. Further studies into the effect of higher-concentration
309 GDF15 in humans and the outcomes of clinical trials will elucidate its role further.

310 As our analyses did not support a causal role for GDF15 plasma levels in the phenotypes examined,
311 we sought to investigate if genetics supported the role for GDF15 as a consequence of these
312 conditions. We conducted reverse MR using GDF15 plasma levels as the outcome and the
313 previously assessed cardiometabolic traits and diseases as the exposures. We identified a
314 significant causal association of BMI on GDF15 plasma levels, suggesting that higher GDF15

315 levels could be a consequence of higher BMI, supporting the recently reported role of GDF15 in
316 response to stress (Patel et al., 2019). However, the contradictory findings of horizontal pleiotropy
317 between MR-Egger and MR-PRESSO lead to residual uncertainty in the interpretation of the MR
318 analysis. It is possible that the heterogeneity found in our study caused by the use of different
319 assays is driving this pleiotropic finding. A recent report in a MR study of GDF15 levels performed
320 by the SCALLOP consortium also found a significant causal effect of BMI (IVW effect=0.20, p -
321 value= 1×10^{-7}) (Folkersen et al., 2020). Our replication of this finding strengthens the evidence that
322 GDF15 levels are likely a consequence of differences in BMI rather than a cause. Further research
323 will be required to determine conclusively the role of horizontal pleiotropy in this relationship.

324 Using valid genetic instruments in MR is of key importance as an invalid instrument would violate
325 the assumptions of the model and lead to unreliable results. To minimise bias from differential
326 assay binding, we conditioned on rs1058587 in our analyses, which could be overcautious. The
327 association of rs1058587 with adiposity traits and hyperemesis gravidarum raises the possibility
328 that GDF15 exerts a causal effect that is not mediated by altered plasma levels, such as via altered
329 proteoforms and/or altered GFRAL binding. With the use of a wide range of GDF15 assays and
330 the possibility that this missense variant is impacting the assay functionality in different assays to
331 varying degrees, the generation of functional data quantifying assay performance is essential for
332 understanding the contribution of this association to GDF15 plasma levels and improving the
333 power of MR analyses. Similarly, as our *GDF15* PTV data is based solely on heterozygous carriers,
334 it is possible that the other allele is compensating for the loss and further assessment of the impact
335 of heterozygote *GDF15* PTVs on the presence of the protein will be required to validate our
336 findings.

337 Taken together, our study provides a systematic and broad investigation of GDF15 phenotypic and
338 genotypic associations, identifying possible epitope artefacts that could affect the data validity of
339 GDF15 assays and introduce systematic bias in genetic analyses. Taking into account these biases,
340 our genetic analyses did not support a causal association between GDF15 plasma levels and
341 obesity and diabetes in humans. Conversely, we found that increased GDF15 plasma levels may
342 be a consequence of higher BMI. We suggest the strong and wide-ranging associations between
343 GDF15 plasma levels and health outcomes observed predominantly represent secondary effects of

344 the underlying disease process, implicating GDF15 as a stress-induced biomarker. The notion that
345 GDF15 may be merely a predictive marker rather than a causal factor for metabolic diseases draws
346 parallels to CRP in cardiovascular disease. Here, epidemiological studies revealed that elevated
347 plasma CRP levels are consistently associated with increased risks of atherosclerosis and ischemic
348 vascular disease, but Mendelian randomization studies do not show a causal relationship (Davey
349 Smith et al., 2005). Our results do not support GDF15 plasma levels as a causal factor at normal
350 human plasma levels for obesity or its related cardiometabolic diseases.

351

352 **Materials and Methods**

353 **Study population and phenotypes**

354 *FINRISK*

355 This study was carried out in accordance with the recommendations of the Declaration of Helsinki.
356 All participants of studies have given written informed consent. FINRISK study was approved by
357 the Ethics Committee of Helsinki and Uusimaa Hospital District.

358 The FINRISK cohort comprises a cross-sectional population survey carried out over a 40-year
359 period from the year 1972 across multiple regions in Finland. The study aimed to assess the risk
360 factors of chronic diseases and health behaviours in a working age population (Borodulin et al.,
361 2018; Vartiainen et al., 2000) and consisted of 6,000-8,800 individuals per survey. Measurement
362 of GDF15 plasma levels using an immunoluminometric assay was included for participants from
363 the 1997 recruitment cohort. Participants were additionally matched to their electronic health
364 records giving access to longitudinal prescription records, death records and diagnosis history. The
365 cohort characteristics are summarized in Supplementary Table S1. In total, 6,610 Finnish
366 individuals from the FINRISK 1997 cohort with available GDF15 plasma concentrations and up
367 to 676 disease outcomes were included in this analysis.

368 Nurse assessment/interview, self-report data and blood samples were all collected at various time
369 points during the study (see Supplementary Materials). A group of clinicians working in the
370 FinnGen consortium constructed 676 disease endpoints combining information from multiple
371 health registries (T et al., 2020). Both ICD8, ICD9 and ICD10 codes were utilized in the disease
372 endpoint definitions. Genotyping was carried out for in 6,538 individuals who were recruited in
373 1997, for more information see Supplementary Materials.

374 *INTERVAL*

375 The INTERVAL study is a prospective cohort study comprising approximately 50,000 participants
376 nested within a pragmatic randomized trial of blood donors [33]. Between 2012 and 2014, blood

377 donors aged 18 years and older were recruited at 25 NHSBT (National Health Service Blood and
378 Transplant) donor centres across England (see Supplementary Materials). Informed consent was
379 obtained from all participants and the INTERVAL study was approved by the National Research
380 Ethics Service (11/EE/0538).

381 For the SOMAscan assays, two non-overlapping subcohorts of 2,731 and 831 participants were
382 randomly selected, of which 3,301 participants (2,481 and 820 in the two subcohorts) remained
383 after genetic quality control.

384 For the Olink assay, protein measurements were conducted in an additional subcohort of 4,998
385 INTERVAL participants aged over 50 at baseline. 4,987 samples passed quality control for this
386 panel and were included in the analyses.

387 For information on genotyping in the INTERVAL cohort see Supplementary Materials

388 *UK Biobank*

389 UK Biobank is a population-based cohort consisting of ~500,000 individuals with participants
390 recruited between 2006-2010 and aged between 40-69. Recruitment and cohort information has
391 been previously described (Sudlow et al., 2015). Electronic health records, self-report
392 questionnaires, diet and lifestyle information and biomarker data is available on this cohort. Here,
393 we utilised body mass index (BMI) and waist-hip-ratio (WHR), which were measured during a
394 nurse assessment, as well as diabetes information. Touchscreen questionnaire diabetic patients
395 were applied in this study rather than ICD10 diagnosed in order to increase patient numbers, given
396 the small subgroup of individuals being examined. Details on the exome sequencing are available
397 in the Supplementary Materials.

398 **Laboratory methods for GDF15 measurement**

399 *FINRISK*

400 Blood samples were collected after an advisory 4-hour fast, immediately centrifuged and then
401 stored at -70°C until GDF15 measurement which was undertaken using an immunoluminometric
402 assay (ILMA) with a limit of detection of 24 ng/L and a linear range from 200 to 50.000 ng/L
403 (Kempf et al., 2007). The ILMA is technically identical to immunoradiometric assay (IRMA)
404 (Horn, Geldszus, Potter, von zur Muhlen, & Brabant, 1996) except that the GDF15 detection
405 antibody was labelled with acridinium ester and assay results were quantified in a luminometer
406 (Berthold). ILMA and IRMA use an antibody that binds over a sequence of Ala197-Ile308. GDF-
407 15 concentrations measured with the ILMA and IRMA are very similar [(ILMA
408 concentration/ILMA concentration) $\times 100\% = 97.8 \pm 1.3\%$] and closely correlated
409 ($r^2 = 0.99$, $p < 0.001$, $n = 31$ samples) (H). Head-to-head comparison of IRMA with the clinical
410 ‘gold standard’ Roche assay have been previously conducted and reported GDF15 levels were
411 comparable (Wollert et al., 2017).

412 *INTERVAL*

413 Blood sample collection procedures have been described previously (C. Moore et al., 2014). Blood
414 samples were collected in 6-ml EDTA tubes and transferred at ambient temperature to UK
415 Biocentre (Stockport, UK) for processing. Plasma was extracted by centrifugation into two 0.8-ml
416 plasma aliquots and stored at -80°C before use.

417 The procedures for obtaining protein measurements using the SOMAscan assay have also been
418 described previously (Sun et al., 2018). Briefly, SOMAscan is a multiplexed, aptamer-based
419 approach that was used to measure the relative concentrations of 3,622 plasma proteins or protein
420 complexes using modified aptamers (‘SOMAmer reagents’, hereafter referred to as SOMAmers).
421 Aliquots of 150 μl of plasma from INTERVAL baseline samples were sent on dry ice to
422 SomaLogic Inc. (Boulder, Colorado, US) for protein measurement. Modified single-stranded DNA
423 SOMAmers were used to bind to specific protein targets and these are then quantified using a DNA
424 microarray. Protein concentrations are quantified as relative fluorescent units. Quality control (QC)
425 was completed at the sample and SOMAmer levels.

426 The Olink assay uses pairs of monoclonal antibodies (or a single polyclonal antibody) to bind each
427 protein target, and then uses proximity extension followed by qPCR to quantify protein abundance.
428 Aliquots of plasma from samples taken from INTERVAL participants at the 2-year follow-up
429 survey were shipped on dry ice to Olink Proteomics (Uppsala, Sweden) for assay. Protein
430 concentrations were recorded as normalised relative protein abundances ('NPX').

431 **Genome-wide association analysis**

432 *FINRISK*

433 For the FINRISK cohort genome-wide association analyses were performed for 5817 individuals
434 with plasma GDF15 concentrations available. A normal distribution of GDF15 plasma
435 concentrations was achieved through applying an inverse normal transformation.
436 Multidimensional scaling was done for genetic data of both studies using PLINK version 1.07
437 (Purcell et al., 2007). Only good quality autosomal markers passing the following criteria:
438 imputation informativeness >0.7 , and $MAF > 0.001$, were included in further evaluations.
439 Frequentist test with method 'expected', assuming an additive genetic model, was performed using
440 SNPTTEST v2 (Marchini, Howie, Myers, McVean, & Donnelly, 2007). Results were adjusted for
441 the first five principal components of the genetic data to account for the population stratification
442 and for gender, age and genotyping set. The Quantile-Quantile and Manhattan plots and regional
443 plots were created using R-2.11 to visualize genome-wide association results. The genomic
444 positions indicated throughout this study are based on NCBI human genome build 37.

445 *INTERVAL*

446 The GWAS for INTERVAL-SOMAscan has previously been described in detail (Sun et al., 2018).
447 Relative protein abundances were first natural log-transformed within each subcohort. Log-
448 transformed protein levels were then adjusted in a linear regression for age, sex, duration between
449 blood draw and processing (binary, ≤ 1 day/ >1 day) and the first three principal components of
450 ancestry from multi-dimensional scaling. A normal distribution of the protein residuals from this
451 linear regression was achieved through rank-inverse normal transformation and these were used
452 as phenotypes for association testing. Simple linear regression assuming an additive genetic model

453 was used to test for genetic associations. Genotype uncertainty was accounted for by carrying out
454 association tests on allelic dosages ('method expected' option) using SNPTEST v2.5.2 [51].

455 For the INTERVAL-Olink GWAS, normalized protein levels ('NPX') were first regressed on age,
456 sex, plate, time from blood draw to processing (in days), and season (categorical: 'Spring',
457 'Summer', 'Autumn', 'Winter'). The residuals from this linear regression were rank-inverse
458 normalized. The rank-inverse normalized residuals were then fitted in a linear regression model
459 adjusted for ancestry by including the first three components of multi-dimensional scaling as
460 covariates. GWAS was conducted using SNPTEST v2.5.2.

461 **Fine mapping**

462 Fine mapping was performed using FINEMAP program (Benner et al., 2016). FINEMAP can
463 potentially identify sets of variants with more evidence of being causal than those highlighted by
464 a stepwise conditional analysis. The FINEMAP provides (1) a list of potential causal
465 configurations together with their posterior probabilities and Bayes factors and, (2) for each
466 variant, the posterior probability and Bayes factor of being causal. FINEMAP was applied with
467 its default settings. LD between SNPs for the conditional analysis was combined using the
468 formula: $(N1 * LD1 + N2 * LD2 + N3 * LD3) / (N1 + N2 + N3)$, where N represents the number
469 of individuals in the GWAS in each cohort, LD represents the R^2 value and 1, 2 and 3 represent
470 the three different cohorts: FINRISK, INTERVAL-SomaScan and INTERVAL-Olink.

471

472 **Meta-analysis**

473 Meta-analysis was completed on the chromosome 19 locus around the GDF15 gene in METAL
474 (Willer, Li, & Abecasis, 2010) using the Inverse-variance Weighted method. A total of 3,799 SNPs
475 were found in common across FINRISK, INTERVAL-SomaScan and INTERVAL-Olink.

476 **Statistical analysis**

477 *Association study between GDF15 levels and disease endpoints and quantitative biomarkers*

478 To examine the association of GDF15 with disease endpoints and quantitative biomarkers, logistic
479 and linear regression models were used, respectively. Inverse-variance transformed GDF15 levels
480 were used in the analyses due to right-skewed distribution. Association of GDF15 with disease
481 endpoints and quantitative biomarkers were examined in 1) age- and sex 2) age, sex and BMI 3)
482 age, sex and smoking -adjusted models. Analyses using linear- and logistic regression models were
483 performed using R2.11 (see URLs). False discovery rate (FDR) was applied to test for multiple
484 test correction.

485 *Survival analysis*

486 All analyses were performed in R version 3.4.0. Cox proportional hazard regression model was
487 conducted to identify predictors of outcomes during 10 years. The survival curves for a Cox
488 proportional hazards model were used to illustrate the timing of the death, type 2 diabetes and
489 CVD events during 10 years in relation to GDF15 quartiles and statistical assessment between
490 upper quartile and other quartiles was performed using cox proportional hazard regression model.
491 To inspect the validity of the cox-model, the test of the proportional hazards assumption for a Cox
492 regression model was used. Hosmer-Lemeshow Goodness of Fit (GOF) test was used to determine
493 whether models were calibrated with similar expected and observed event rates in both low- and
494 high-risk individuals.

495 *Wilcoxon test for prevalent and incident diabetes*

496 Wilcoxon rank sum test (Mann–Whitney U test) was performed, in R using function “wilcox.test”
497 from stats package, to test whether the distributions of incident type 2 diabetes case group,
498 prevalent type 2 diabetes case group and control group were systematically different from one
499 another.

500

501 *Mendelian Randomisation*

502 We applied MR (Bowden et al., 2015) to explore causality of GDF15 with BMI, WHR, glucose,
503 type 2 diabetes, HDL cholesterol and BMD. We additionally explored these relationship in reverse;

504 with GDF15 as an outcome and other traits as the exposure. GWAS summary statistics for GDF15
505 were taken from the conditional meta-analysis of FINRISK and INTERVAL for the forward MR
506 and from FINRISK only for the reverse MR. GWAS in INTERVAL being completed on
507 chromosome 19 only whereas GWAS in FINRISK were completed on all chromosomes. Summary
508 statistics for the other traits were obtained from large public data resources: BMI (n=590,827)
509 (Yengo L et al., 2018), WHR (n=485,486) (Shungin et al., 2015), glucose (n=314,916) (Neale,
510 2018), type 2 diabetes (n cases=74,124, n controls=824,006) (Mahajan et al., 2018), HDL
511 cholesterol (n=315,133) (Neale, 2018) and BMD (n=426,824) (Morris et al., 2019). For BMI, MR
512 with GDF15 as the exposure was applied using summary statistics from UK Biobank only
513 (n=361,194) as the LD clumped variants were not available in the larger meta-analysis, that was
514 utilised for reverse MR. We utilised LD clumping to identify independent genetic variants in
515 summary statistics and applied these as genetic instruments in MR analyses. MR analysis was run
516 in R (version 4.0.2) using the package ‘MendelianRandomization’. The inverse variance weighted
517 method (IVW) from this package was applied to test for causality and a sensitivity analysis using
518 MR-Egger to testing for horizontal pleiotropy. A finding of significant causality is indicated with
519 the IVW *p*-value and a significant MR-Egger intercept *p*-value indicates a finding of horizontal
520 pleiotropy. MR-PRESSO (Mendelian randomization pleiotropy residual sum and outlier)
521 (Verbanck et al., 2018) was additionally applied as a further sensitivity analysis to test for
522 horizontal pleiotropy and was run in R using the ‘MRPRESSO’ package. The Global *p*-value
523 indicates a significant finding of horizontal pleiotropy which instigates removal of outliers from
524 the analysis. MR-PRESSO then re-runs IVW testing and gives a significant distortion *p*-value to
525 indicate if the removal of outliers reduced the horizontal pleiotropy found in the analysis.

526 **GDF15 PTV analysis**

527 *Exome data*

528 Individuals with *GDF15* PTVs were identified by extracting variants annotated as protein
529 truncating variants (including exon loss variants, frameshift variants, start lost, stop gained, stop
530 lost, splice acceptor variants, splice donor variant, rare amino acid variant, transcript ablation, gene
531 fusion and bidirectional gene fusion). Supplementary Table S19 demonstrates the frequency of

532 LOF variants in each ancestry. From the individuals that did not carry *GDF15* PTV variants 20,000
533 males and 20,000 females were randomly extracted as controls.

534 *Mann Whitney U test*

535 Analysis was completed in R (version 3.2.4) using “wilcox.test” and models compared BMI, WHR
536 (in males and females separately), diabetic status (self-reported), BMD and HDL in *GDF15* PTV
537 carriers and non-carriers.

Acknowledgements: We thank the participants and investigators in the UK Biobank study who made this work possible (Resource Application Number 26041). We thank the UK Biobank Exome Sequencing Consortium (UKB-ESC) members AbbVie, Alnylam Pharmaceuticals, AstraZeneca, Biogen, Bristol-Myers Squibb, Pfizer, Regeneron and Takeda for funding the generation of the data and Regeneron Genetics Center for completing the sequencing and initial quality control of the exome sequencing data. We thank the AstraZeneca Centre for Genomics Research Analytics and Informatics team for processing and analysis of sequencing data.

Participants in the INTERVAL randomised controlled trial were recruited with the active collaboration of NHS Blood and Transplant England (www.nhsbt.nhs.uk), which has supported field work and other elements of the trial. DNA extraction and genotyping was co-funded by the National Institute for Health Research (NIHR), the NIHR BioResource (<http://bioresource.nihr.ac.uk>) and the NIHR Cambridge Biomedical Research Centre (BRC-1215-20014) [*]. SomaLogic assays were funded by Merck and the NIHR Cambridge BRC (BRC-1215-20014) [*]. The academic coordinating centre for INTERVAL was supported by core funding from: NIHR Blood and Transplant Research Unit in Donor Health and Genomics (NIHR BTRU-2014-10024), UK Medical Research Council (MR/L003120/1), British Heart Foundation (SP/09/002; RG/13/13/30194; RG/18/13/33946) and the NIHR Cambridge BRC (BRC-1215-20014) [*]. A complete list of the investigators and contributors to the INTERVAL trial is provided in reference [**]. The academic coordinating centre would like to thank blood donor centre staff and blood donors for participating in the INTERVAL trial.

This work was supported by Health Data Research UK, which is funded by the UK Medical Research Council, Engineering and Physical Sciences Research Council, Economic and Social Research Council, Department of Health and Social Care (England), Chief Scientist Office of the Scottish Government Health and Social Care Directorates, Health and Social Care Research and Development Division (Welsh Government), Public Health Agency (Northern Ireland), British Heart Foundation and Wellcome.

This work was conducted as part of an alliance between the University of Cambridge and the AstraZeneca Centre for Genomics Research (AZ Ref: 10033507).

The Genotype-Tissue Expression (GTEx) Project was supported by the Common Fund of the Office of the Director of the National Institutes of Health, and by NCI, NHGRI, NHLBI, NIDA, NIMH, and NINDS. The data used for the analyses described in this manuscript were obtained from the GTEx Portal on 08/12/2021.

*The views expressed are those of the author(s) and not necessarily those of the NIHR or the Department of Health and Social Care.

**Di Angelantonio E, Thompson SG, Kaptoge SK, Moore C, Walker M, Armitage J, Ouwehand WH, Roberts DJ, Danesh J, INTERVAL Trial Group. Efficiency and safety of varying the frequency of whole blood donation (INTERVAL): a randomised trial of 45 000 donors. *Lancet*. 2017 Nov 25;390(10110):2360-2371.

Funding: Rachel Ong is co-funded by the NIHR Cambridge Biomedical Research Centre (BRC-1215-20014) [*]. VS has been supported by the Finnish Foundation for Cardiovascular Research.

Author contributions:

Competing interests: EMW, RM, DSP and AM are employees of AstraZeneca. RMYO is currently an employee of GlaxoSmithKline (although was not when this work was carried out). AB reports grants outside of this work from Biogen, BioMarin, Bioverativ, Merck, Novartis, Pfizer and Sanofi and personal fees from Novartis. VS has received honoraria from Novo Nordisk and Sanofi for consulting. He also has ongoing research collaboration with Bayer Ltd (All outside this work).

It is made available under a [CC-BY 4.0 International license](#) .

REFERENCES

- Adela, R., & Banerjee, S. K. (2015). GDF-15 as a Target and Biomarker for Diabetes and Cardiovascular Diseases: A Translational Prospective. *J Diabetes Res*, 2015, 490842. doi:10.1155/2015/490842
- Akbari, P., Gilani, A., Sosina, O., Kosmicki, J. A., Khrimian, L., Fang, Y. Y., . . . Lotta, L. A. (2021). Sequencing of 640,000 exomes identifies GPR75 variants associated with protection from obesity. *Science*, 373(6550). doi:10.1126/science.abf8683
- Bonaca, M. P., Morrow, D. A., Braunwald, E., Cannon, C. P., Jiang, S., Breher, S., . . . Wollert, K. C. (2011). Growth differentiation factor-15 and risk of recurrent events in patients stabilized after acute coronary syndrome: observations from PROVE IT-TIMI 22. *Arterioscler Thromb Vasc Biol*, 31(1), 203-210. doi:10.1161/ATVBAHA.110.213512
- Bootcov, M. R., Bauskin, A. R., Valenzuela, S. M., Moore, A. G., Bansal, M., He, X. Y., . . . Breit, S. N. (1997). MIC-1, a novel macrophage inhibitory cytokine, is a divergent member of the TGF-beta superfamily. *Proc Natl Acad Sci U S A*, 94(21), 11514-11519. doi:10.1073/pnas.94.21.11514
- Borner, T., Shaulson, E. D., Ghidewon, M. Y., Barnett, A. B., Horn, C. C., Doyle, R. P., . . . De Jonghe, B. C. (2020). GDF15 Induces Anorexia through Nausea and Emesis. *Cell Metab*, 31(2), 351-362 e355. doi:10.1016/j.cmet.2019.12.004
- Borner, T., Wald, H. S., Ghidewon, M. Y., Zhang, B., Wu, Z., De Jonghe, B. C., . . . Grill, H. J. (2020). GDF15 Induces an Aversive Visceral Malaise State that Drives Anorexia and Weight Loss. *Cell Rep*, 31(3), 107543. doi:10.1016/j.celrep.2020.107543
- Borodulin, K., Tolonen, H., Jousilahti, P., Jula, A., Juolevi, A., Koskinen, S., . . . Vartiainen, E. (2018). Cohort Profile: The National FINRISK Study. *Int J Epidemiol*, 47(3), 696-696i. doi:10.1093/ije/dyx239
- Bowden, J., Davey Smith, G., & Burgess, S. (2015). Mendelian randomization with invalid instruments: effect estimation and bias detection through Egger regression. *Int J Epidemiol*, 44(2), 512-525. doi:10.1093/ije/dyv080
- Brown, D. A., Breit, S. N., Buring, J., Fairlie, W. D., Bauskin, A. R., Liu, T., & Ridker, P. M. (2002). Concentration in plasma of macrophage inhibitory cytokine-1 and risk of cardiovascular events in women: a nested case-control study. *Lancet*, 359(9324), 2159-2163. doi:10.1016/S0140-6736(02)09093-1
- Brown, D. A., Moore, J., Johnen, H., Smeets, T. J., Bauskin, A. R., Kuffner, T., . . . Breit, S. N. (2007). Serum macrophage inhibitory cytokine 1 in rheumatoid arthritis: a potential marker of erosive joint destruction. *Arthritis Rheum*, 56(3), 753-764. doi:10.1002/art.22410
- Cheung, C. L., Tan, K. C. B., Au, P. C. M., Li, G. H. Y., & Cheung, B. M. Y. (2019). Evaluation of GDF15 as a therapeutic target of cardiometabolic diseases in human: A Mendelian randomization study. *EBioMedicine*, 41, 85-90. doi:10.1016/j.ebiom.2019.02.021
- Coll, A. P., Chen, M., Taskar, P., Rimmington, D., Patel, S., Tadross, J. A., . . . O'Rahilly, S. (2020). GDF15 mediates the effects of metformin on body weight and energy balance. *Nature*, 578(7795), 444-448. doi:10.1038/s41586-019-1911-y
- Daniels, L. B., Clopton, P., Laughlin, G. A., Maisel, A. S., & Barrett-Connor, E. (2011). Growth-differentiation factor-15 is a robust, independent predictor of 11-year mortality risk in community-dwelling older adults: the Rancho Bernardo Study. *Circulation*, 123(19), 2101-2110. doi:10.1161/CIRCULATIONAHA.110.979740

- Davey Smith, G., Lawlor, D. A., Harbord, R., Timpson, N., Rumley, A., Lowe, G. D., . . . Ebrahim, S. (2005). Association of C-reactive protein with blood pressure and hypertension: life course confounding and mendelian randomization tests of causality. *Arterioscler Thromb Vasc Biol*, 25(5), 1051-1056. doi:10.1161/01.ATV.0000160351.95181.d0
- Day, E. A., Ford, R. J., Smith, B. K., Mohammadi-Shemirani, P., Morrow, M. R., Gutgesell, R. M., . . . Steinberg, G. R. (2019). Metformin-induced increases in GDF15 are important for suppressing appetite and promoting weight loss. *Nat Metab*, 1(12), 1202-1208. doi:10.1038/s42255-019-0146-4
- Emmerson, P. J., Duffin, K. L., Chintharlapalli, S., & Wu, X. (2018). GDF15 and Growth Control. *Front Physiol*, 9, 1712. doi:10.3389/fphys.2018.01712
- Emmerson, P. J., Wang, F., Du, Y., Liu, Q., Pickard, R. T., Gonciarz, M. D., . . . Wu, X. (2017). The metabolic effects of GDF15 are mediated by the orphan receptor GFRAL. *Nat Med*, 23(10), 1215-1219. doi:10.1038/nm.4393
- Fairlie, W. D., Russell, P. K., Wu, W. M., Moore, A. G., Zhang, H. P., Brown, P. K., . . . Breit, S. N. (2001). Epitope mapping of the transforming growth factor-beta superfamily protein, macrophage inhibitory cytokine-1 (MIC-1): identification of at least five distinct epitope specificities. *Biochemistry*, 40(1), 65-73. doi:10.1021/bi001064p
- Fejzo, M. S., Arzy, D., Tian, R., MacGibbon, K. W., & Mullin, P. M. (2018). Evidence GDF15 Plays a Role in Familial and Recurrent Hyperemesis Gravidarum. *Geburtshilfe Frauenheilkd*, 78(9), 866-870. doi:10.1055/a-0661-0287
- Fejzo, M. S., Sazonova, O. V., Sathirapongsasuti, J. F., Hallgrimsdottir, I. B., Vacic, V., MacGibbon, K. W., . . . andMe Research, T. (2018). Placenta and appetite genes GDF15 and IGFBP7 are associated with hyperemesis gravidarum. *Nat Commun*, 9(1), 1178. doi:10.1038/s41467-018-03258-0
- Folkersen, L., Gustafsson, S., Wang, Q., Hansen, D. H., Hedman, A. K., Schork, A., . . . Malarstig, A. (2020). Genomic and drug target evaluation of 90 cardiovascular proteins in 30,931 individuals. *Nat Metab*, 2(10), 1135-1148. doi:10.1038/s42255-020-00287-2
- H, T. Dissertation.
- Ho, J. E., Mahajan, A., Chen, M. H., Larson, M. G., McCabe, E. L., Ghorbani, A., . . . Wang, T. J. (2012). Clinical and genetic correlates of growth differentiation factor 15 in the community. *Clin Chem*, 58(11), 1582-1591. doi:10.1373/clinchem.2012.190322
- Holmes, M. V., Lange, L. A., Palmer, T., Lanktree, M. B., North, K. E., Almoguera, B., . . . Keating, B. J. (2014). Causal effects of body mass index on cardiometabolic traits and events: a Mendelian randomization analysis. *Am J Hum Genet*, 94(2), 198-208. doi:10.1016/j.ajhg.2013.12.014
- Horn, R., Geldszus, R., Potter, E., von zur Muhlen, A., & Brabant, G. (1996). Radioimmunoassay for the detection of leptin in human serum. *Exp Clin Endocrinol Diabetes*, 104(6), 454-458. doi:10.1055/s-0029-1211484
- Hsu, J. Y., Crawley, S., Chen, M., Ayupova, D. A., Lindhout, D. A., Higbee, J., . . . Allan, B. B. (2017). Non-homeostatic body weight regulation through a brainstem-restricted receptor for GDF15. *Nature*, 550(7675), 255-259. doi:10.1038/nature24042
- Jackson, C. E., Haig, C., Welsh, P., Dalzell, J. R., Tsoralis, I. K., McConnachie, A., . . . McMurray, J. J. (2016). The incremental prognostic and clinical value of multiple novel biomarkers in heart failure. *Eur J Heart Fail*, 18(12), 1491-1498. doi:10.1002/ejhf.543

- Jammah, A. A. (2015). Endocrine and metabolic complications after bariatric surgery. *Saudi J Gastroenterol*, 21(5), 269-277. doi:10.4103/1319-3767.164183
- Jiang, J., Thalamuthu, A., Ho, J. E., Mahajan, A., Ek, W. E., Brown, D. A., . . . Mather, K. A. (2018). A Meta-Analysis of Genome-Wide Association Studies of Growth Differentiation Factor-15 Concentration in Blood. *Front Genet*, 9, 97. doi:10.3389/fgene.2018.00097
- Johnen, H., Lin, S., Kuffner, T., Brown, D. A., Tsai, V. W., Bauskin, A. R., . . . Breit, S. N. (2007). Tumor-induced anorexia and weight loss are mediated by the TGF-beta superfamily cytokine MIC-1. *Nat Med*, 13(11), 1333-1340. doi:10.1038/nm1677
- Kempf, T., Eden, M., Strelau, J., Naguib, M., Willenbockel, C., Tongers, J., . . . Wollert, K. C. (2006). The transforming growth factor-beta superfamily member growth-differentiation factor-15 protects the heart from ischemia/reperfusion injury. *Circ Res*, 98(3), 351-360. doi:10.1161/01.RES.0000202805.73038.48
- Kempf, T., Horn-Wichmann, R., Brabant, G., Peter, T., Allhoff, T., Klein, G., . . . Wollert, K. C. (2007). Circulating concentrations of growth-differentiation factor 15 in apparently healthy elderly individuals and patients with chronic heart failure as assessed by a new immunoradiometric sandwich assay. *Clin Chem*, 53(2), 284-291. doi:10.1373/clinchem.2006.076828
- Khan, S. Q., Ng, K., Dhillon, O., Kelly, D., Quinn, P., Squire, I. B., . . . Ng, L. L. (2009). Growth differentiation factor-15 as a prognostic marker in patients with acute myocardial infarction. *Eur Heart J*, 30(9), 1057-1065. doi:10.1093/eurheartj/ehp600
- Lind, L., Wallentin, L., Kempf, T., Tapken, H., Quint, A., Lindahl, B., . . . Wollert, K. C. (2009). Growth-differentiation factor-15 is an independent marker of cardiovascular dysfunction and disease in the elderly: results from the Prospective Investigation of the Vasculature in Uppsala Seniors (PIVUS) Study. *Eur Heart J*, 30(19), 2346-2353. doi:10.1093/eurheartj/ehp261
- Lockhart, S. M., Saudek, V., & O'Rahilly, S. (2020). GDF15: A hormone conveying somatic distress to the brain. *Endocr Rev*. doi:10.1210/endrev/bnaa007
- Madonna, R., Cevik, C., Nasser, M., & De Caterina, R. (2012). Hepatocyte growth factor: molecular biomarker and player in cardioprotection and cardiovascular regeneration. *Thromb Haemost*, 107(4), 656-661. doi:10.1160/TH11-10-0711
- Mahajan, A., Taliun, D., Thurner, M., Robertson, N. R., Torres, J. M., Rayner, N. W., . . . McCarthy, M. I. (2018). Fine-mapping type 2 diabetes loci to single-variant resolution using high-density imputation and islet-specific epigenome maps. *Nat Genet*, 50(11), 1505-1513. doi:10.1038/s41588-018-0241-6
- Marchini, J., Howie, B., Myers, S., McVean, G., & Donnelly, P. (2007). A new multipoint method for genome-wide association studies by imputation of genotypes. *Nat Genet*, 39(7), 906-913. doi:10.1038/ng2088
- Matsumoto, K., Umitsu, M., De Silva, D. M., Roy, A., & Bottaro, D. P. (2017). Hepatocyte growth factor/MET in cancer progression and biomarker discovery. *Cancer Sci*, 108(3), 296-307. doi:10.1111/cas.13156
- Mesureur, L., & Arvanitakis, M. (2017). Metabolic and nutritional complications of bariatric surgery : a review. *Acta Gastroenterol Belg*, 80(4), 515-525.
- Miller, V. M., Redfield, M. M., & McConnell, J. P. (2007). Use of BNP and CRP as biomarkers in assessing cardiovascular disease: diagnosis versus risk. *Curr Vasc Pharmacol*, 5(1), 15-25. doi:10.2174/157016107779317251

- Moore, A. G., Brown, D. A., Fairlie, W. D., Bauskin, A. R., Brown, P. K., Munier, M. L., . . . Breit, S. N. (2000). The transforming growth factor- β superfamily cytokine macrophage inhibitory cytokine-1 is present in high concentrations in the serum of pregnant women. *J Clin Endocrinol Metab*, 85(12), 4781-4788. doi:10.1210/jcem.85.12.7007
- Moore, C., Sambrook, J., Walker, M., Tolkien, Z., Kaptoge, S., Allen, D., . . . Danesh, J. (2014). The INTERVAL trial to determine whether intervals between blood donations can be safely and acceptably decreased to optimise blood supply: study protocol for a randomised controlled trial. *Trials*, 15, 363. doi:10.1186/1745-6215-15-363
- Morris, J. A., Kemp, J. P., Youlten, S. E., Laurent, L., Logan, J. G., Chai, R. C., . . . Richards, J. B. (2019). An atlas of genetic influences on osteoporosis in humans and mice. *Nat Genet*, 51(2), 258-266. doi:10.1038/s41588-018-0302-x
- Mullican, S. E., Lin-Schmidt, X., Chin, C. N., Chavez, J. A., Furman, J. L., Armstrong, A. A., . . . Rangwala, S. M. (2017). GFRAL is the receptor for GDF15 and the ligand promotes weight loss in mice and nonhuman primates. *Nat Med*, 23(10), 1150-1157. doi:10.1038/nm.4392
- Nair, V., Robinson-Cohen, C., Smith, M. R., Bellovich, K. A., Bhat, Z. Y., Bobadilla, M., . . . Bansal, N. (2017). Growth Differentiation Factor-15 and Risk of CKD Progression. *J Am Soc Nephrol*, 28(7), 2233-2240. doi:10.1681/ASN.2016080919
- Neale, B. (2018). GWAS results.
- O'Rahilly, S. (2017). GDF15-From Biomarker to Allostatic Hormone. *Cell Metab*, 26(6), 807-808. doi:10.1016/j.cmet.2017.10.017
- Organisaton., W. H. Global Health Observatory (GBO) data: Obesity.
- Patel, S., Alvarez-Guaita, A., Melvin, A., Rimmington, D., Dattilo, A., Miedzybrodzka, E. L., . . . O'Rahilly, S. (2019). GDF15 Provides an Endocrine Signal of Nutritional Stress in Mice and Humans. *Cell Metab*, 29(3), 707-718 e708. doi:10.1016/j.cmet.2018.12.016
- Peacock, W. F. (2014). Novel biomarkers in acute heart failure: MR-pro-adrenomedullin. *Clin Chem Lab Med*, 52(10), 1433-1435. doi:10.1515/cclm-2014-0222
- Pietzner, M., Wheeler, E., Carrasco-Zanini, J., Raffler, J., Kerrison, N. D., Oerton, E., . . . Langenberg, C. (2020). Genetic architecture of host proteins interacting with SARS-CoV-2. *BioRxiv*, doi: <https://doi.org/10.1101/2020.1107.1101.182709doi>.
- Purcell, S., Neale, B., Todd-Brown, K., Thomas, L., Ferreira, M. A., Bender, D., . . . Sham, P. C. (2007). PLINK: a tool set for whole-genome association and population-based linkage analyses. *Am J Hum Genet*, 81(3), 559-575. doi:10.1086/519795
- Rohatgi, A., Patel, P., Das, S. R., Ayers, C. R., Khera, A., Martinez-Rumayor, A., . . . de Lemos, J. A. (2012). Association of growth differentiation factor-15 with coronary atherosclerosis and mortality in a young, multiethnic population: observations from the Dallas Heart Study. *Clin Chem*, 58(1), 172-182. doi:10.1373/clinchem.2011.171926
- Shungin, D., Winkler, T. W., Croteau-Chonka, D. C., Ferreira, T., Locke, A. E., Magi, R., . . . Mohlke, K. L. (2015). New genetic loci link adipose and insulin biology to body fat distribution. *Nature*, 518(7538), 187-196. doi:10.1038/nature14132
- Sudlow, C., Gallacher, J., Allen, N., Beral, V., Burton, P., Danesh, J., . . . Collins, R. (2015). UK biobank: an open access resource for identifying the causes of a wide range of complex diseases of middle and old age. *PLoS Med*, 12(3), e1001779. doi:10.1371/journal.pmed.1001779

- Sun, B. B., Maranville, J. C., Peters, J. E., Stacey, D., Staley, J. R., Blackshaw, J., . . . Butterworth, A. S. (2018). Genomic atlas of the human plasma proteome. *Nature*, 558(7708), 73-79. doi:10.1038/s41586-018-0175-2
- T, K., Lahtela E, Havulinna AS, & Consortium., F. (2020). <https://www.finngen.fi/en/researchers/clinical-endpoints>.
- Tran, T., Yang, J., Gardner, J., & Xiong, Y. (2018). GDF15 deficiency promotes high fat diet-induced obesity in mice. *PLoS One*, 13(8), e0201584. doi:10.1371/journal.pone.0201584
- Tsai, V. W., Macia, L., Feinle-Bisset, C., Manandhar, R., Astrup, A., Raben, A., . . . Breit, S. N. (2015). Serum Levels of Human MIC-1/GDF15 Vary in a Diurnal Pattern, Do Not Display a Profile Suggestive of a Satiety Factor and Are Related to BMI. *PLoS One*, 10(7), e0133362. doi:10.1371/journal.pone.0133362
- Tsai, V. W. W., Husaini, Y., Sainsbury, A., Brown, D. A., & Breit, S. N. (2018). The MIC-1/GDF15-GFRAL Pathway in Energy Homeostasis: Implications for Obesity, Cachexia, and Other Associated Diseases. *Cell Metab*, 28(3), 353-368. doi:10.1016/j.cmet.2018.07.018
- Vartiainen, E., Jousilahti, P., Alfthan, G., Sundvall, J., Pietinen, P., & Puska, P. (2000). Cardiovascular risk factor changes in Finland, 1972-1997. *Int J Epidemiol*, 29(1), 49-56.
- Verbanck, M., Chen, C. Y., Neale, B., & Do, R. (2018). Detection of widespread horizontal pleiotropy in causal relationships inferred from Mendelian randomization between complex traits and diseases. *Nat Genet*, 50(5), 693-698. doi:10.1038/s41588-018-0099-7
- Vila, G., Riedl, M., Anderwald, C., Resl, M., Handisurya, A., Clodi, M., . . . Luger, A. (2011). The relationship between insulin resistance and the cardiovascular biomarker growth differentiation factor-15 in obese patients. *Clin Chem*, 57(2), 309-316. doi:10.1373/clinchem.2010.153726
- Wang, D., Day, E. A., Townsend, L. K., Djordjevic, D., Jorgensen, S. B., & Steinberg, G. R. (2021). GDF15: emerging biology and therapeutic applications for obesity and cardiometabolic disease. *Nat Rev Endocrinol*, 17(10), 592-607. doi:10.1038/s41574-021-00529-7
- Wiklund, F. E., Bennet, A. M., Magnusson, P. K., Eriksson, U. K., Lindmark, F., Wu, L., . . . Brown, D. A. (2010). Macrophage inhibitory cytokine-1 (MIC-1/GDF15): a new marker of all-cause mortality. *Aging Cell*, 9(6), 1057-1064. doi:10.1111/j.1474-9726.2010.00629.x
- Wilding, J. P. H., Batterham, R. L., Calanna, S., Davies, M., Van Gaal, L. F., Lingvay, I., . . . Group, S. S. (2021). Once-Weekly Semaglutide in Adults with Overweight or Obesity. *N Engl J Med*, 384(11), 989. doi:10.1056/NEJMoa2032183
- Willer, C. J., Li, Y., & Abecasis, G. R. (2010). METAL: fast and efficient meta-analysis of genomewide association scans. *Bioinformatics*, 26(17), 2190-2191. doi:10.1093/bioinformatics/btq340
- Wollert, K. C., Kempf, T., Giannitsis, E., Bertsch, T., Braun, S. L., Maier, H., . . . Christenson, R. H. (2017). An Automated Assay for Growth Differentiation Factor 15. *J Appl Lab Med*, 1(5), 510-521. doi:10.1373/jalm.2016.022376
- Wollert, K. C., Kempf, T., Lagerqvist, B., Lindahl, B., Olofsson, S., Allhoff, T., . . . Wallentin, L. (2007). Growth differentiation factor 15 for risk stratification and selection of an invasive treatment strategy in non ST-elevation acute coronary syndrome. *Circulation*, 116(14), 1540-1548. doi:10.1161/CIRCULATIONAHA.107.697714

- Xiong, Y., Walker, K., Min, X., Hale, C., Tran, T., Komorowski, R., . . . Veniant, M. M. (2017). Long-acting MIC-1/GDF15 molecules to treat obesity: Evidence from mice to monkeys. *Sci Transl Med*, 9(412). doi:10.1126/scitranslmed.aan8732
- Yang, L., Chang, C. C., Sun, Z., Madsen, D., Zhu, H., Padkjaer, S. B., . . . Jorgensen, S. B. (2017). GFRAL is the receptor for GDF15 and is required for the anti-obesity effects of the ligand. *Nat Med*, 23(10), 1158-1166. doi:10.1038/nm.4394
- Yengo L, Sidorenko J, Kempner KE, Zheng Z, Wood AR, Weedon MN, . . . Consortium, G. (2018). Meta-analysis of genome-wide association studies for height and body mass index in ~700,000 individuals of European ancestry. *BioRxiv*, doi: <https://doi.org/10.1101/274654>
- Yumuk, V., Tsigos, C., Fried, M., Schindler, K., Busetto, L., Micic, D., . . . Obesity., O. M. T. F. o. t. E. A. f. t. S. o. (2016). European Guidelines for Obesity Management in Adults *Obes Facts*, 9(1), 64. doi:10.1159/000444869
- Zimmers, T. A., Jin, X., Hsiao, E. C., McGrath, S. A., Esquela, A. F., & Koniaris, L. G. (2005). Growth differentiation factor-15/macrophage inhibitory cytokine-1 induction after kidney and lung injury. *Shock*, 23(6), 543-548.

Tables

Table 1. Disease endpoints associated ($p_{\text{FDR}} < 1 \times 10^{-5}$) with GDF15 plasma levels in FINRISK.

| Disease Endpoint | Cases / Controls | OR (95% CI) | p_{FDR} |
|--|------------------|------------------|-----------------------|
| All-cause mortality | 1057/5481 | 1.79 (1.68-1.90) | 7.5×10^{-24} |
| Death due to cardiac causes | 471/6067 | 1.76 (1.61-1.90) | 3.0×10^{-11} |
| Atherosclerosis, excluding cerebral, coronary and PAD | 379/6159 | 1.67 (1.51-1.82) | 3.2×10^{-8} |
| Diabetes mellitus type 2 | 567/5971 | 1.48 (1.36-1.60) | 3.2×10^{-8} |
| Diabetes mellitus | 592/5946 | 1.44 (1.33-1.56) | 9.8×10^{-8} |
| Diseases of arteries, arterioles and capillaries | 505/6033 | 1.48 (1.35-1.61) | 3.6×10^{-7} |
| Other chronic obstructive pulmonary disease | 221/6317 | 1.84 (1.63-2.04) | 5.7×10^{-7} |
| Chronic obstructive pulmonary disease | 235/6303 | 1.77 (1.57-1.97) | 9.6×10^{-7} |
| Pneumonia (excl. viral and due to other infectious organisms not elsewhere classified) | 779/5759 | 1.34 (1.24-1.44) | 9.6×10^{-7} |
| Type 2 diabetes without complications | 485/6053 | 1.44 (1.31-1.57) | 1.2×10^{-6} |
| All pneumonia | 789/5749 | 1.33 (1.23-1.43) | 1.9×10^{-6} |
| Chronic kidney disease | 66/6472 | 2.46 (2.14-2.79) | 4.4×10^{-6} |
| Influenza and pneumonia | 833/5795 | 1.30 (1.21-1.40) | 4.4×10^{-6} |
| Type 2 diabetes with renal complications | 35/6503 | 2.97 (2.57-3.38) | 8.1×10^{-6} |
| Sequelae of cerebrovascular disease | 209/6329 | 1.67 (1.47-1.86) | 9.2×10^{-6} |
| Alcoholic liver disease | 56/6482 | 2.26 (1.95-2.57) | 9.2×10^{-6} |

Results are adjusted for age, gender, smoking and BMI. Abbreviations: OR, odds ratio; CI, confidence interval; COPD, chronic obstructive pulmonary disease; PAD, peripheral artery disease; SAH, subarachnoid haemorrhage. ICD codes for these disease endpoints have been published (T et al., 2020).

Table 2. Meta-analysis of GDF15 GWAS conditioned on rs1058587 in FINRISK and INTERVAL.

| SNPs | LD block | EA/OA | FINRISK | | INTERVAL-SomaScan | | INTERVAL-Olink | | Meta-analysis | | | |
|-------------|----------|-------|---------|-----------------------------|-------------------|-----------------------------|----------------|-----------------------------|---------------|------------------------|------------------------------|-------------------------------|
| | | | beta | <i>p</i> -value | beta | <i>p</i> -value | beta | <i>p</i> -value | beta | <i>p</i> -value | Heterogeneity I ² | Heterogeneity <i>p</i> -value |
| rs16982345 | 1 | A/G | -0.28 | 0.55 | 0.30 | 0.18 | 0.01 | 0.72 | 0.01 | 0.64 | 4.2 | 0.35 |
| rs1058587 | 1 | G/C | - | - | - | - | 0.01 | 0.77 | - | - | - | - |
| rs3787023 | 1 | A/G | 0.06 | 0.0011 | -0.011 | 0.72 | 0.04 | 0.072 | 0.04 | 0.0017 | 51.4 | 0.13 |
| rs1055150 | 1 | G/C | 0.06 | 0.0012 | -0.017 | 0.56 | 0.04 | 0.080 | 0.04 | 0.0025 | 58.5 | 0.090 |
| rs1059369 | 1 | A/T | 0.06 | 0.0010 | -0.018 | 0.54 | 0.04 | 0.078 | 0.04 | 0.0024 | 60.2 | 0.081 |
| rs1054221 | 2 | C/T | 0.38 | 3.4x10⁻³⁷ | 0.62 | 7.8x10⁻⁸³ | 0.52 | 9.4x10⁻⁷⁴ | 0.50 | 2.4x10 ⁻¹⁸⁶ | 93.4 | 2.9x10 ⁻⁷ |
| rs1227734 | 2 | T/C | 0.38 | 3.9x10⁻³⁷ | 0.62 | 1.8x10⁻⁸³ | 0.51 | 7.1x10⁻⁷⁴ | 0.50 | 2.5x10 ⁻¹⁸⁷ | 93.1 | 5.4x10 ⁻⁷ |
| rs189593084 | 3 | A/C | -0.33 | 8.4x10⁻¹⁴ | -0.61 | 0.011 | -0.47 | 0.0053 | -0.35 | 1.3x10 ⁻¹⁶ | 0.0 | 0.40 |

For comparison identical variants to those listed in Supplementary Table S10 are shown here (these variants were identified by fine mapping unconditioned GWAS results from FINRISK and INTERVAL). LD blocks were defined as SNPs that had LD > 0.1 with the lead variant (most significantly associated variant).

Table 3. Mendelian randomisation results for exposure genetically-determined GDF15 plasma levels with cardiometabolic outcomes.

| Methods | IVW (fixed) | | MR-Egger | | | MR-PRESSO | | | | | |
|----------|-------------------|----------------------------|-------------------|------------|----------------------|-------------------|----------------|-------------------|--------------------|-------------------|-----------------------|
| | Estimate (SE) | p_{FDR} (raw p -value) | Estimate | p -value | Intercept p -value | Raw estimate | Raw p -value | Outlier Estimate | Outlier p -value | Global p -value | Distortion p -value |
| BMI | -0.006 (0.054) | 1.0 (0.92) | 0.043 (0.10) | 0.67 | 0.57 | -0.006 (0.054) | 0.92 | -0.016 (0.043) | 0.73 | 0.012 | 0.24 |
| WHR | 0.018 (0.007) | 0.078 (0.013) | 0.023 (0.014) | 0.10 | 0.67 | 0.018 | 0.041 | - | - | 0.075 | - |
| Glucose | 0.019 (0.018) | 1.0 (0.30) | 0.010 (0.034) | 0.77 | 0.76 | 0.019 | 0.34 | - | - | 0.29 | - |
| Diabetes | 0.004 (0.007) | 1.0 (0.52) | -0.003 (0.012) | 0.80 | 0.46 | 0.004 (0.006) | 0.47 | - | - | 0.63 | - |
| HDL | -0.005 (0.004) | 1.0 (0.23) | -0.010 (0.007) | 0.15 | 0.36 | -0.005 (0.004) | 0.27 | -0.008 (0.005) | 0.17 | 0.021 | <0.0002 |
| BMD | 0.008 (0.009) | 1.0 (0.41) | -0.005 (0.017) | 0.77 | 0.38 | 0.008 (0.009) | 0.44 | 0.003 (0.003) | 0.42 | 0.010 | 0.87 |

A significant finding of pleiotropy is indicated by the intercept p -value in MR-Egger and the Global p -value in MR-PRESSO. For MR-PRESSO the outlier test is only run if horizontal pleiotropy is observed. The distortion p -value represents whether the outlier removal significantly reduces the horizontal pleiotropy.

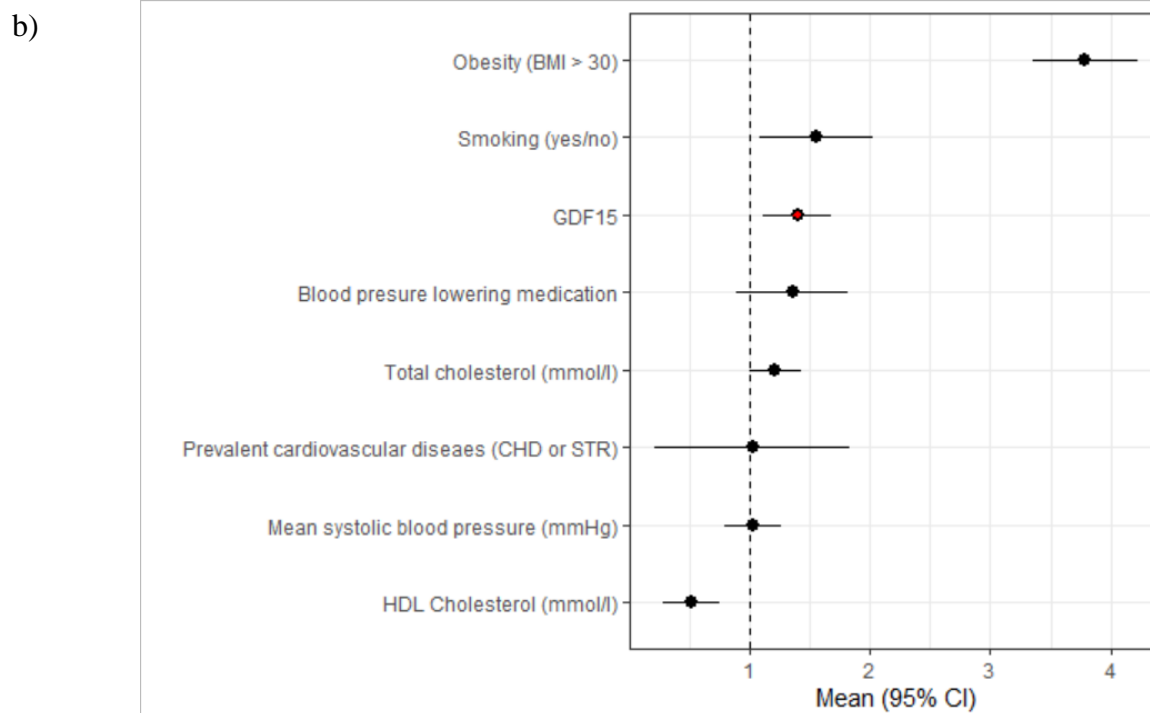
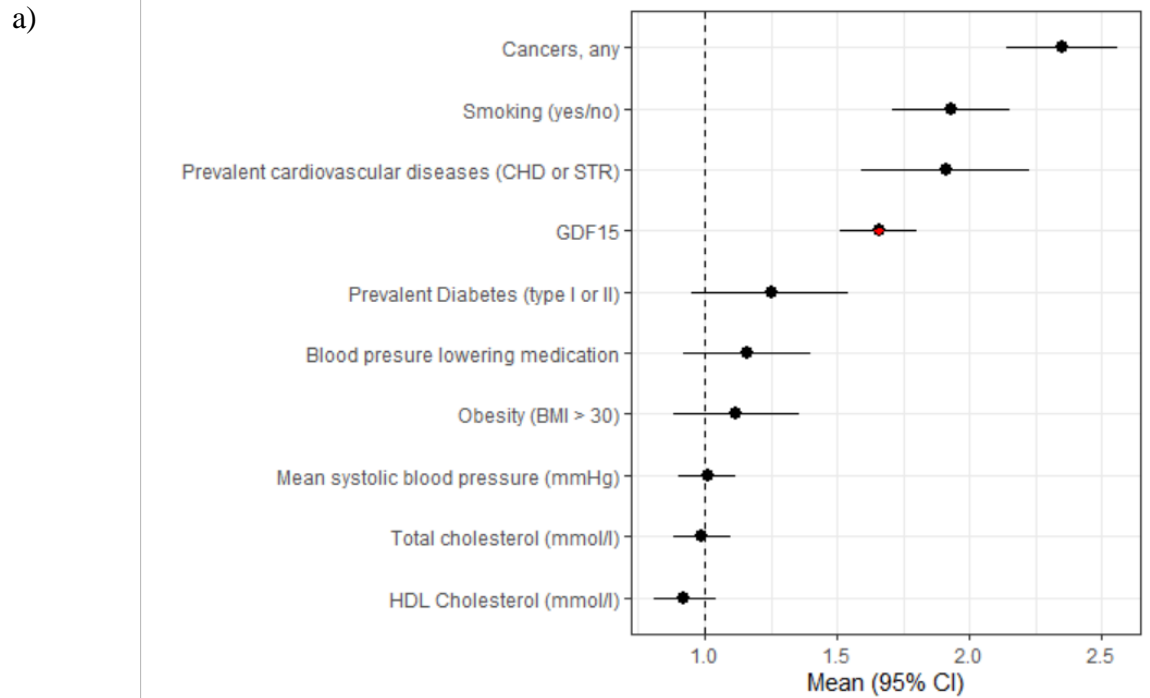
Table 4. Reverse Mendelian randomization with GDF15 plasma levels as outcome.

| Methods | SNPs | IVW (fixed) | | MR-Egger | | | MR-PRESSO | | | | | |
|----------|------|----------------------------------|------------------------------------|-------------------|----------------|-------------------------|-------------------|--------------------|---------------------|-----------------------|-----------------------|--------------------------|
| | | Estimate (SE) | p_{FDR} (raw p - value) | Estimate | p - value | Intercept p -value | Raw estimate | Raw p - value | Outlier Estimate | Outlier p -value | Global p - value | Distortion p -value |
| BMI | 1140 | 0.089 (0.027) | 0.0072 (0.0012) | 0.11 (0.081) | 0.19 | 0.81 | 0.089 (0.027) | 0.0012 | 0.001 | 0.027 | <0.00013 | 0.92 |
| WHR | 577 | 0.021 (0.038) | 0.83 (0.58) | -0.23 (0.12) | 0.054 | 0.027 | -0.021 (0.038) | 0.58 | - | - | 0.0049 | - |
| Glucose | 67 | -0.024 (0.060) | 0.83 (0.69) | -0.11 (0.14) | 0.44 | 0.51 | 0.024 (0.060) | 0.69 | - | - | 0.030 | - |
| Diabetes | 259 | -0.001 (0.014) | 0.97 (0.97) | -0.015 (0.034) | 0.66 | 0.64 | 0.001 (0.014) | 0.71 | - | - | 0.033 | - |
| HDL | 431 | -0.056 (0.059) | 0.68 (0.34) | -0.006 (0.097) | 0.95 | 0.51 | -0.056 (0.059) | 0.34 | 0.065 | 0.058 | 0.0033 | ? |
| BMD | 1131 | 0.020 (0.017) | 0.68 (0.24) | 0.046 (0.035) | 0.19 | 0.41 | 0.002 (0.017) | 0.24 | - | - | 0.089 | - |

A significant finding of pleiotropy is indicated by the intercept p -value in MR-Egger and the Global p -value in MR-PRESSO. For MR-PRESSO the outlier test is only run if horizontal pleiotropy is observed. The distortion p -value represents whether the outlier removal significantly reduces the horizontal pleiotropy.

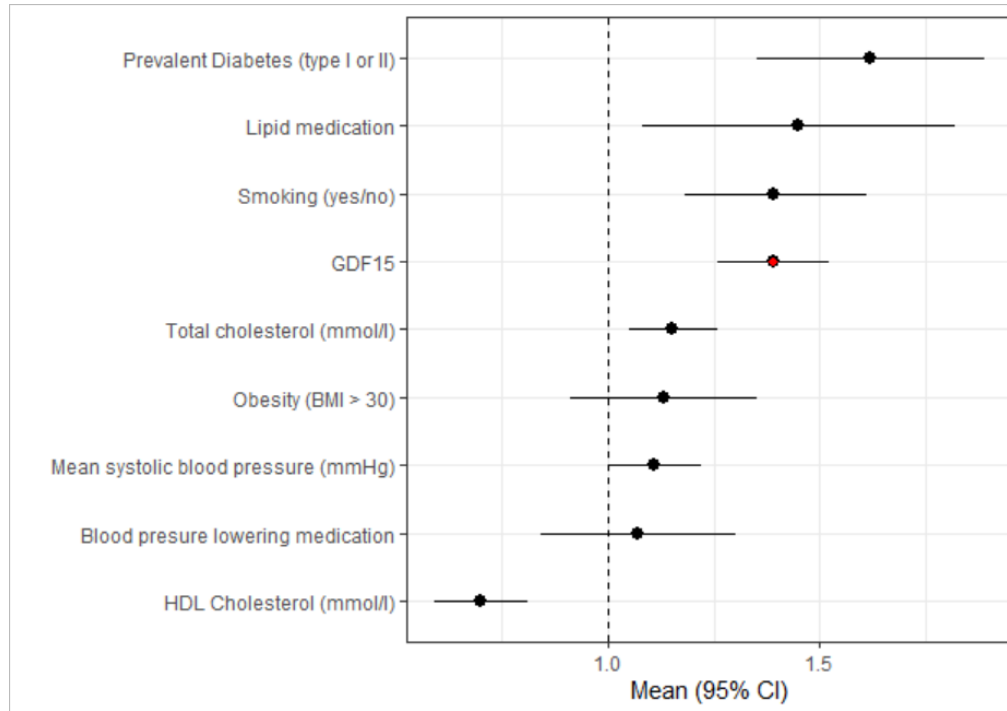
Figures

Figure 1. Forest plots of Cox proportional hazard for independent predictors of (a) all-cause mortality, (b) cardiovascular disease and (c) diabetes.



It is made available under a [CC-BY 4.0 International license](https://creativecommons.org/licenses/by/4.0/).

c)



538

GDF15 is highlighted in red and variables are ordered by highest hazards ratio. Abbreviations: BMI, body mass index; GDF15, growth differentiation factor-15; CHD, coronary heart disease; STR, stroke; HDL, high density lipoprotein.