

Article

Title

Factors associated with fatal stroke in glioma patients: a population analysis

Authors

Kai Jin, PhD^{1,2}, Paul M Brennan, PhD^{2,3}, Michael TC Poon, MSc^{1,2,3}, Cathie LM Sudlow, PhD^{1,2*},

Jonine D Figueroa, PhD^{1,2*}

*Contributed equally

¹Usher Institute, University of Edinburgh, Edinburgh, UK

²Brain Tumour Centre of Excellence, Cancer Research UK Edinburgh Centre, University of Edinburgh, Edinburgh, UK

³Translational Neurosurgery, Centre for Clinical Brain Sciences, University of Edinburgh, Edinburgh, UK

Corresponding author

Dr. Kai Jin

Usher Institute,

University of Edinburgh, Edinburgh, UK

E: kai.jin@ed.ac.uk; T: +44 (0)7737 414 193

Abstract

Importance: Brain tumour patients have the highest stroke mortality rates among all cancer types, but the factors associated with fatal stroke in brain tumour remain unknown.

Objective: We aimed to examine to what extent brain tumour grade, a marker of biological aggressiveness, tumour size and cancer treatment each associated with stroke mortality in glioma. Gliomas include the most common malignant types of brain cancer.

Design, setting, participants: A retrospective, observational cohort study using the US National Cancer Institute's Surveillance Epidemiology and End Results program. We identified adult patients with a primary diagnosis of malignant gliomas in 2000 to 2018 (N=72,252). The primary outcome of interest was death from cerebrovascular disease. Adjusted hazard ratio (aHR) and 95% confidence interval (CI) were calculated using cause-specific Cox regression model to determine associations with tumour characteristics: grades II-IV, tumour size and cancer treatment (surgery, radiotherapy, chemotherapy) associated with stroke mortality after adjustment for age, sex, race, marital status and calendar years.

Results: In patients with glioma, increased risk for stroke mortality was observed in patients with higher grade (Grade III: aHR=1.19, 95% CI=0.88-1.61, $p>0.05$; Grade IV: aHR=1.94, 95% CI=1.39-2.71 compared to Grade II, $p<0.001$), and those with larger brain tumours (size=3-6 cm: aHR=1.93, 95% CI 1.31 -2.85, $p<0.001$, size>9cm: aHR=2.07, 95% CI=1.40-3.06, $p<0.001$ compared to size < 3cm). Having treatment was associated with decreased risk: surgery (yes VS no: aHR= 0.65; $p<0.01$), radiation (yes VS no: aHR= 0.66, $p<0.01$), chemotherapy (yes VS no: aHR=0.49, $p<0.001$).

Conclusions Higher grade and tumour size are strongly associated with increased stroke mortality. This implicates tumour biology and/or the systemic tumour response which require further investigation in prospective studies to determine strategies to mitigate this risk.

Introduction

Higher stroke mortality rates have been reported for cancer patients compared to non-cancer patients¹, particularly for brain tumour patients who have the highest risk of fatal stroke among all cancer types². The aetiology of stroke among cancer patients remains unclear and whether stroke is caused by cancer itself or by the treatment of cancer has not been well characterized^{2,3}. Brain tumour-associated stroke may be influenced by tumour biology, direct tumour compression, or cancer therapies¹. We aimed to examine to what extent brain tumour grades, a marker of biological aggressiveness, tumour size and cancer treatment each associated with fatal stroke in glioma. Gliomas include the most common and most malignant types of brain cancer.

Methods:

We conducted a retrospective, observational cohort study using Surveillance, Epidemiology, and End Results (SEER) according to the Strengthening the Reporting of Observational Studies in Epidemiology (STROBE) guidelines. We identified adult (≥ 18 years) with primary malignant gliomas between 2000 and 2018 from SEER 18 registries database covering 28% of US population. Glioma is classified into four grades based on WHO criteria⁴. Higher grade indicates increasing tumour aggressiveness. We ascertained cause of deaths by linking to mortality data and the primary outcome of interest was death from cerebrovascular disease using ICD-10 code described previously³(see eMethods).

We computed survival time from the date of diagnosis until date of death or last contact (December 31, 2018). Cause-specific cox regression models were used to estimate adjusted hazard ratios (aHRs) and 95% confidence intervals (CIs) to determine factors associated with cerebrovascular mortality among glioma patients including tumour grades (II-IV), tumour size (≤ 3 cm, 3-6 cm, 6-9 cm, ≥ 9 cm), treatment status (surgery yes vs no, radiation therapy yes vs no, chemotherapy yes vs no) adjusted by sociodemographic factors (age, sex, races/ethnicity, marital status) and calendar years.

Due to small numbers of cerebrovascular death in Grade I (N=6) we restricted our analyses to grade II-IV.

Subgroup analyses were performed to check for potential bias and subgroup effects including: 1) age (18- 65 years, >65 years); 2) having surgery status; since aging is a strong risk factor for stroke and having surgery is considered a proxy for healthier patients well enough to receive the surgery⁵. We also conducted subgroup analyses by sex (male and female) and ethnicity/race (White, Black).

Sensitivity analysis were performed by 1) limiting the study period after 2005 to test the assumption that introduction of adjuvant chemotherapy treatment in 2005 did not influence the probability of occurrence of outcome⁶; 2) limiting one month after diagnosis to reduce the chance of reverse causality⁷. All analyses were performed in R version 4.0. An association was considered statistically significant for a two-sided P value < 0.05.

Results

Among 72, 252 glioma patients there was a total follow-up time of 266, 491 person-years (median survival=12 months [IQR 4, 34]; 56.8% males) between 2000 to 2018 (Table 1). Fewer patients were diagnosed with low grade (Grade I =2.2% & Grade II =14.6%) and the majority were grade IV, including the most aggressive glioblastoma multiforme (GBM) (61.1%). Most patients were diagnosed younger than 65 years of age, although there was variation by grade (Grade I: 94.6%; Grade II 83.7%; Grade III 77.4%; Grade IV: 50.4%). Among 374 recorded cerebrovascular deaths, 80% events occurred in Grade III (n=121, 32.3%) and Grade IV gliomas (n=179, 47.9%), and about half in those diagnosed at aged <65 years (Grade III (52.4%) and Grade IV (49.1%).

Increased risk for stroke mortality was observed in patients with high grade gliomas (Grade III: aHR=1.19, 95% CI=0.88-1.61, p>0.05; Grade IV: aHR=1.94, 95% CI=1.39-2.71 compared to Grade II, p<0.001), and those with larger brain tumours (size=3-6 cm: aHR=1.93, 95% CI 1.31 -2.85, p<0.001, size>9cm: aHR=2.07, 95% CI=1.40-3.06, p<0.001 compared to size < 3cm). Having cancer

treatment was associated with decreased risk: surgery (yes VS no: aHR= 0.65; $p<0.01$), radiation (yes VS no: aHR= 0.66, $p<0.01$), chemotherapy (yes VS no: aHR=0.49, $p<0.001$) (Figure 1A).

In age-stratified analysis, Grade IV (aHR=1.99, 95% CI=1.28-3.09, $p<0.01$) was strongly associated with stroke mortality in patients <65 years (Figure 1B). The aHRs for stroke mortality associated with higher grades appeared to decline in older patients (>65 years) albeit non-significant(Figure 1C).

Larger brain tumours were associated with increased stroke mortality, while the more pronounced association was observed in patients aged >65 years. Having cancer treatment was associated lower stroke mortality risk in both age groups. Similar patterns to those noted above were observed in analysis limited to having surgery (eTable1). Broadly comparable estimates were found in sex-stratified analysis and in White although less clear in Black (eTable 2), a study period after 2005 (eTable 3&4) and in those who survived one month after their diagnosis (data not shown).

Discussion

Our analysis of over 70,000 cases using large population-based data from SEER found higher grade particularly Grade IV, the most aggressive gliomas and larger tumour size were strongly associated with fatal stroke in glioma patients. Receiving cancer treatments was associated with lower risk for fatal stroke.

The association of higher glioma grade with stroke mortality suggests an important biological role for cancer cell aggressiveness in the risk of stroke. This is consistent with previous studies that showed patients with more advanced cancers including lung, pancreatic, colorectal and gastric cancer are also at higher risk of stroke^{3,8,9}. This may implicate a systemic response to malignancy in stroke risk, for example from cancer-mediated hypercoagulability status^{8,10}. The findings of strong association between high tumour grade and fatal stroke particularly in younger patients may further support the independent role of tumour aggressiveness on the risk of stroke mortality, because younger age group, a relative healthy cohort, was less likely to be affected by comorbidities than older people such as hypertension¹¹. The association of larger brain tumours with higher stroke mortality might relate to

reduced vascular perfusion from the mass effect of tumour growth, or to the direct tumour invasion into surrounding brain tissue and vasculature, subsequently leading to severe neurological disability or death^{12,13}.

Our findings showed that all modalities of cancer treatment were associated with lower risk for fatal stroke. Surgical resection reduces the tumour bulk and helps restore vascular perfusion. Radiotherapy and chemotherapy do not usually impact on the tumour bulk, instead downgrading tumour cell activity. Although cancer treatment attributed to the reduction the risk of fatal stroke in our study, cardiovascular toxic effects of cancer therapies including stroke has received increasing attention. There is evident that cranial radiotherapy was associated with risk of late neurovascular events and stroke in younger brain tumour survivors¹⁴. Further study is needed to understand the effects of cancer treatment on subsequent stroke risk to guide preventive intervention¹⁵.

The complex interplay of putative risk and benefit from the tumour and its treatment underscore the further analysis which is needed. Our findings should be interpreted in the context of the limitations. A lack of clinical variables such as cardiovascular risk factors, cancer treatment regimen, and stroke subtypes as ischaemic or haemorrhagic in the database examined limits further interpretation. A more comprehensive approach is needed by linking health data from various sources.

Source of Funding

KJ and MTCP are funded by Cancer Research UK Brain Cancer Centre of Excellence Award (C157/A27589). Cancer Research UK did not play a role in study design, analysis, interpretation, or submission of this article.

Disclosures

Nil

References

1. Dardiotis E, Aloizou AM, Markoula S, et al. Cancer-associated stroke: Pathophysiology, detection and management (Review). *Int J Oncol*. 2019;54(3):779-796.
2. Zaorsky NG, Zhang Y, Tchelebi LT, Mackley HB, Chinchilli VM, Zacharia BE. Stroke among cancer patients. *Nat Commun*. 2019;10(1):5172.
3. Jin K, Brennan PM, Poon MTC, Sudlow CLM, Figueroa JD. Raised cardiovascular disease mortality after central nervous system tumor diagnosis: analysis of 171,926 patients from UK and USA. *Neuro-Oncology Advances*. 2021;3(1).
4. Louis DN, Perry A, Reifenberger G, et al. The 2016 World Health Organization Classification of Tumors of the Central Nervous System: a summary. *Acta neuropathologica*. 2016;131(6):803-820.
5. Weller M, van den Bent M, Preusser M, et al. EANO guidelines on the diagnosis and treatment of diffuse gliomas of adulthood. *Nature reviews Clinical oncology*. 2021;18(3):170-186.
6. Stupp R, Mason WP, van den Bent MJ, et al. Radiotherapy plus concomitant and adjuvant temozolomide for glioblastoma. *N Engl J Med*. 2005;352(10):987-996.
7. Anderson JR, Cain KC, Gelber RD. Analysis of survival by tumor response. *J Clin Oncol*. 1983;1(11):710-719.
8. Navi BB, Reiner AS, Kamel H, et al. Association between incident cancer and subsequent stroke. *Ann Neurol*. 2015;77(2):291-300.
9. Navi BB, Reiner AS, Kamel H, et al. Risk of Arterial Thromboembolism in Patients With Cancer. *J Am Coll Cardiol*. 2017;70(8):926-938.
10. Falanga A, Russo L, Milesi V, Vignoli A. Mechanisms and risk factors of thrombosis in cancer. *Crit Rev Oncol Hematol*. 2017;118:79-83.
11. Screever EM, Meijers WC, Moslehi JJ. Age-Related Considerations in Cardio-Oncology. *J Cardiovasc Pharmacol Ther*. 2021;26(2):103-113.

12. Seano G, Nia HT, Emblem KE, et al. Solid stress in brain tumours causes neuronal loss and neurological dysfunction and can be reversed by lithium. *Nat Biomed Eng.* 2019;3(3):230-245.
13. Monteiro AR, Hill R, Pilkington GJ, Madureira PA. The Role of Hypoxia in Glioblastoma Invasion. *Cells.* 2017;6(4):45.
14. Campen CJ, Kranick SM, Kasner SE, et al. Cranial irradiation increases risk of stroke in pediatric brain tumor survivors. *Stroke.* 2012;43(11):3035-3040.
15. Mitchell JD, Cehic DA, Morgia M, et al. Cardiovascular Manifestations From Therapeutic Radiation: A Multidisciplinary Expert Consensus Statement From the International Cardio-Oncology Society. *JACC: CardioOncology.* 2021;3(3):360-380.

Figure legend

Figure 1 Cause-specific Cox proportional hazard regression model HRs for association between tumour grades, tumour size, cancer treatment and stroke mortality in gliomas patients and by age groups

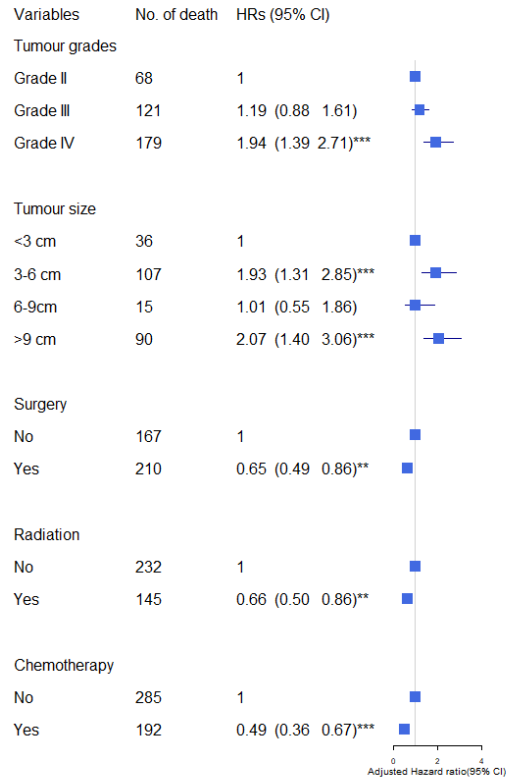
Tables

Table 1 Characteristics of the study cohort SEER 2000-2018

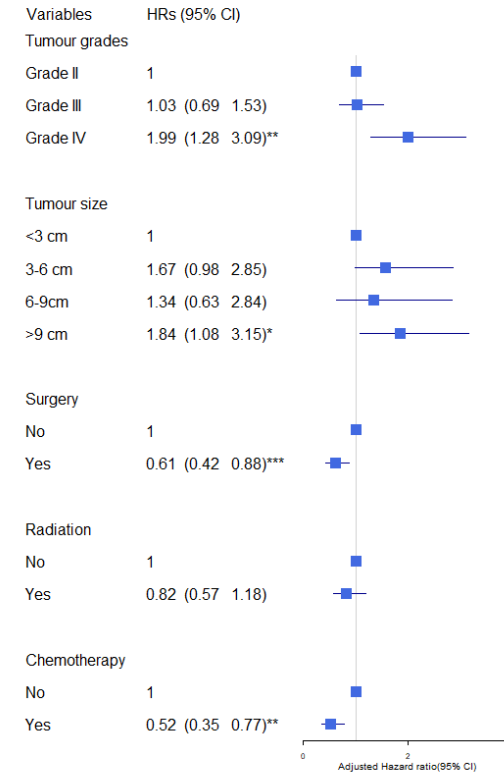
Figure 1

Factors associated with glioma patients

A: Overall patients



B: Patients aged <=65 years



C: Patients aged >65 years

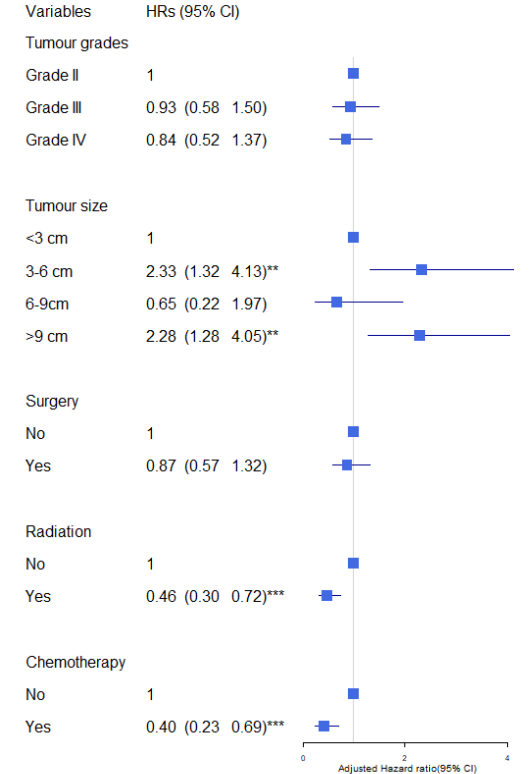


Figure 1: Factors associated with glioma patients. A: overall patients; B: Patients aged <=65 years, C: Patients aged >65 years. The hazard ratios were calculated using a cause-specific Cox proportional hazards regression model and adjusted by age, sex, calendar year. Significance codes: '***' 0.001, '**' 0.01, '*' 0.05'

Table 1 Characteristics of the study cohort SEER 2000-2018

Characteristics	Total cases	Grade I	Grade II	Grade III	Grade IV	P value
Number of patients, No.(% of total)	N=72252	N=1569 (2.2%)	N=10572 (14.6%)	N=15966 (22.1%)	N=44145 (61.1%)	
Sex:						0.001
Female	31208 (43.2%)	736 (46.9%)	4626 (43.8%)	7290 (45.7%)	18556 (42.0%)	
Male	41044 (56.8%)	833 (53.1%)	5946 (56.2%)	8676 (54.3%)	25589 (58.0%)	
Age, median (IQR), years	59.0 [46.0;70.0]	31.0 [22.0;44.0]	46.0 [34.0;59.0]	50.0 [37.0;64.0]	64.0 [55.0;73.0]	
Age categories						<0.001
18-65 years	47091 (64.6%)	1659 (94.6%)	8936 (83.7%)	12623 (77.4%)	23873 (54.0%)	
66+ years	25825 (35.4%)	95 (5.42%)	1737 (16.3%)	3680 (22.6%)	20313 (46.0%)	
Year diagnosis						0.001
2000-2004	17640 (24.4%)	410 (26.1%)	3112 (29.4%)	3994 (25.0%)	10124 (22.9%)	
2005-2009	18715 (25.9%)	387 (24.7%)	2984 (28.2%)	4195 (26.3%)	11149 (25.3%)	
2010-2014	19843 (27.5%)	461 (29.4%)	2575 (24.4%)	4430 (27.7%)	12377 (28.0%)	
2015-2018	16054 (22.2%)	311 (19.8%)	1901 (18.0%)	3347 (21.0%)	10495 (23.8%)	
Race/ethnicities						0.001
Non-Hispanic White	55079 (76.5%)	1087 (70.5%)	7719 (73.3%)	11485 (72.4%)	34788 (78.9%)	
Hispanic (All Races)	8553 (11.9%)	229 (14.9%)	1497 (14.2%)	2211 (13.9%)	4616 (10.5%)	
Non-Hispanic Black	4320 (6.00%)	136 (8.82%)	628 (5.97%)	1065 (6.71%)	2491 (5.65%)	
Other ethnic groups	4058 (5.64%)	90 (5.84%)	683 (6.49%)	1107 (6.98%)	2178 (4.94%)	
Marital status						0.001
Married/Partner	43165 (59.7%)	619 (39.5%)	5955 (56.3%)	8948 (56.0%)	27643 (62.6%)	
Single/Separated/Divorced	26117 (36.1%)	866 (55.2%)	4166 (39.4%)	6242 (39.1%)	14843 (33.6%)	
Unknown	2970 (4.11%)	84 (5.35%)	451 (4.27%)	776 (4.86%)	1659 (3.76%)	
Tumour size						<0.001

Size <= 3cm	7764 (10.6%)	367 (20.9%)	1247 (11.7%)	2196 (13.5%)	3954 (8.95%)	
Size 3-6cm	20438 (28.0%)	387 (22.1%)	2333 (21.9%)	3415 (20.9%)	14303 (32.4%)	
Size 6-9 cm	7422 (10.2%)	68 (3.88%)	961 (9.00%)	1412 (8.66%)	4981 (11.3%)	
Size more than 9 cm	11208 (15.4%)	297 (16.9%)	2208 (20.7%)	3562 (21.8%)	5141 (11.6%)	
No data	26084 (35.8%)	635 (36.2%)	3924 (36.8%)	5718 (35.1%)	15807 (35.8%)	
Surgery performed:						0.001
Surgery performed	52342 (72.4%)	1377 (87.8%)	7459 (70.6%)	10333 (64.7%)	33173 (75.1%)	
Surgery not performed	19632 (27.2%)	184 (11.7%)	3075 (29.1%)	5554 (34.8%)	10819 (24.5%)	
Unknown	278 (0.38%)	8 (0.51%)	38 (0.36%)	79 (0.49%)	153 (0.35%)	
Radiation						
Radiation given	46386 (64.2%)	238 (15.2%)	5061 (47.9%)	9041 (56.6%)	32046 (72.6%)	
None/Unknown or Refused	25866 (35.8%)	1331 (84.8%)	5511 (52.1%)	6925 (43.4%)	12099 (27.4%)	
Chemotherapy						<0.001
Yes	36233 (50.1%)	76 (4.84%)	3592 (34.0%)	6535 (40.9%)	26030 (59.0%)	
No/Unknown	36019 (49.9%)	1493 (95.2%)	6980 (66.0%)	9431 (59.1%)	18115 (41.0%)	
Vital status						<0.001
Alive	18277 (25.3%)	1322 (84.3%)	5210 (49.3%)	7334 (45.9%)	4411 (9.99%)	
Dead	53975 (74.7%)	247 (15.7%)	5362 (50.7%)	8632 (54.1%)	39734 (90.0%)	
Survival Months	12.0 [4.00;34.0]	87.0 [34.0;149]	44.0 [12.0;104]	30.0 [8.00;87.0]	7.00 [3.00;16.0]	<0.001
Death from cerebrovascular disease	374	6 (1.60%)	68 (18.2%)	121 (32.4%)	179 (47.9%)	

