

1 **Metabolic phenotyping reveals a potential link between elevated faecal amino acids, diet and**
2 **symptom severity in individuals with severe mental illness**

3

4 **Authors**

5 Jack Jansma ^{1*}, Rogier van Essen ^{1*}, Bartholomeus C.M. Haarman ², Anastasia
6 Chrysovalantou Chatziioannou ¹, Jenny Borkent ³, Magdalini Ioannou ^{2,3}, Saskia van Hemert ⁴, Iris E.C.
7 Sommer ^{3#}, Sahar El Aidy ^{1#}

8

9 **Affiliations**

10 ¹ Host-microbe Interactions, Groningen Biomolecular Sciences and Biotechnology Institute (GBB),
11 University of Groningen, Groningen, The Netherlands.

12 ² Department of Psychiatry, University Medical Center Groningen, Groningen, The Netherlands

13 ³ Department of Biomedical Sciences of Cells & Systems, University Medical Center Groningen,
14 Groningen, The Netherlands

15 ⁴ Winlove Probiotics, Amsterdam, the Netherlands

16

17 * Shared first author

18 # Shared corresponding author

19 Iris E.C. Sommer. Department of Biomedical Sciences of Cells & Systems, University Medical Center
20 Groningen, Groningen, The Netherlands. E: i.e.c.sommer@umcg.nl

21 Sahar El Aidy. Host-microbe Interactions, Groningen Biomolecular Sciences and Biotechnology
22 Institute (GBB), University of Groningen, Nijenborgh 7, 9747 AG Groningen, The Netherlands. P:
23 +31(0)503632201.

24 E: sahar.elaidy@rug.nl

25

26

27 **List of abbreviations**

28 **BD:** Bipolar disorder

29 **BGA:** Brain-gut axis

30 **BMI:** Body mass index

31 **BPRS:** Brief psychiatric rating scale

32 **CRP:** C-reactive protein

33 **DHD-index:** Dutch healthy diet index

34 **ESAM:** Endothelial cell-selective adhesion molecule

35 **GSRS:** Gastrointestinal symptoms rating scale

36 **¹H-NMR:** Proton nuclear magnetic resonance

37 **IgG:** Immunoglobulin G

38 **PANSS:** Positive and negative symptom scale

39 **SSD:** Schizophrenia spectrum disorders

40

41

42

43

44

45

46

47

48

49

50

51

52

53

54

55

56

57

58 **Abstract**

59 The brain-gut axis is increasingly recognized as an important contributing factor in the onset and
60 progression of severe mental illnesses such as schizophrenia spectrum disorders and bipolar
61 disorder. This study investigates associations between levels of faecal metabolites identified using
62 ¹H-NMR, clinical parameters, and dietary components of forty-two individuals diagnosed in a
63 transdiagnostic approach to have severe mental illness. Faecal levels of the amino acids; alanine,
64 leucine, and valine showed a significant positive correlation with psychiatric symptom severity as
65 well as with dairy intake. Overall, this study proposes a diet-induced link between the brain-gut axis
66 and the severity of psychiatric symptoms, which could be valuable in the design of novel dietary or
67 therapeutic interventions to improve psychiatric symptoms.

68

69 **Keywords:** Proton nuclear magnetic resonance; faecal metabolites; Schizophrenia spectrum disorder;
70 Bipolar disorder; Brain-gut axis, diet.

71

72

73

74

75

76

77

78

79

80

81

82

83

84

85

86

87 Introduction

88 While the etiology of schizophrenia spectrum disorders (schizophrenia, schizophreniform disorder or
89 schizoaffective disorder, SSD) and bipolar disorder (BD) is still largely unknown, current hypotheses
90 include genetic, environmental and inflammatory factors (Carvalho et al., 2020; Horrobin et al., 1994;
91 McCutcheon et al., 2020; Müller, 2018) as key contributing factors. Indeed, both disorders have been
92 associated with increased pro-inflammatory status in the blood and brain. Furthermore, deviations of
93 the gut microbiome have been reported in both SSD and BD, highlighting the role of the brain-gut
94 axis (BGA) (Genedi et al., 2019). Importantly, gut-related disorders such as irritable bowel syndrome,
95 are commonly reported in individuals with SSD or BD (Gupta et al., 1997; Lee et al., 2015).
96 Additionally, frequently used medication such as clozapine, olanzapine, haloperidol and lithium have
97 been shown to affect gut motility and microbiota composition (Flowers et al., 2017; Severance et al.,
98 2015; Sublette et al., 2021; Xu et al., 2021), supporting the BGA as a significantly contributing factor
99 in the etiology of these psychiatric disorders. Such findings spiked the interest to better understand
100 the potential role of the gut and its residing microbes, aiming at the development of therapeutic
101 interventions targeting the BGA to ameliorate the severity of psychiatric disorders such as SSD and
102 BD (Ligezka et al., 2020; Lucidi et al., 2021; Mörkl et al., 2020).

103 Among several existing hypotheses on the origin of SSD and BD, the membrane hypothesis
104 postulates that SSD is a systemic disease originating from increased membrane dysfunction in both
105 the brain and gut (Horrobin et al., 1994), resulting in increased translocation of metabolites, and
106 toxic compounds from the gut to the bloodstream and eventually reaching the brain (Bischoff et al.,
107 2014). A genome-wide association study identified an association between the endothelial cell-
108 selective adhesion molecule (*ESAM*) gene and SSD (Pouget et al., 2016). *ESAM* is expressed on
109 endothelial cells and is associated with tight junction proteins in the blood-brain barrier and the
110 intestinal barrier (Nasdala et al., 2002; Uhlén et al., 2015). In SSD, altered endothelial barrier function
111 in the brain was associated with an influx of macrophages in the brain, increased pro-inflammatory
112 status (Cai et al., 2018) and decreased memory functioning (Cai et al., 2020). Moreover, both SSD and

113 BD individuals have been reported to have increased serum zonulin levels as well as soluble CD14
114 (Barber et al., 2019; Kiliç et al., 2020; Severance et al., 2013; Usta et al., 2021). Such intestinal barrier
115 dysfunction and the subsequent translocation of (harmful) substances has been closely linked to
116 altered gut microbiota composition (Chelakkot et al., 2018), which was also reported in individuals
117 with BD and SSD (Evans et al., 2017; Nguyen et al., 2019).

118 To investigate whether gut-associated metabolites are linked with clinical variables, including
119 psychiatric and gastrointestinal symptom severity, we employed untargeted metabolomics using
120 proton nuclear magnetic resonance spectroscopy ($^1\text{H-NMR}$) on faecal samples collected from forty-
121 two individuals diagnosed in a transdiagnostic approach to have SSD or BD.

122

123

124

125

126

127

128

129

130

131

132

133

134

135

136

137

138

139 **Material and methods**

140 *Participants and clinical variables*

141 As part of an ongoing randomized control study (GUTS, trail register number NL6385), forty-two
142 participants (15 SSD and 27 BD) were analyzed in this baseline cross sectional analysis. The study was
143 approved by the ethics committee of the University Medical Center Groningen (UMCG) (METc
144 2018/614) and all participants provided written consent upon explanation of the study procedures.
145 To be eligible for participation in the GUTS study, patients were required to have a DSM-IV-R or DSM-
146 5 diagnosis of schizophrenia (295.x), schizophreniform disorder (295.4), schizoaffective disorder
147 (295.7), or bipolar disorder (296.x). Clinical variables including age, sex, body mass index (BMI) and
148 medication intake were reported. Symptom severity was evaluated by trained interviewers using the
149 Brief Psychiatric Rating Scale (BPRS) (Overall and Gorham, 1962) and gastrointestinal complaints
150 were evaluated by the self-report questionnaire: the gastrointestinal symptoms rating scale (GSRS)
151 (**Table 1**) (Kulich et al., 2008). The participants were asked to fill in the Dutch healthy diet index
152 (DHD-index), which is used to score participants according to their adherence to the Dutch guidelines
153 for a healthy diet and measures the nutrient density of their diet (**Table 2**) (Looman et al., 2017; van
154 Lee et al., 2012). Additionally, each subject handed in a faecal sample, which was stored at -80 °C
155 until further use.

156

157 *Lyophilization and metabolite extraction*

158 To enable comparison of dry weight and homogenization, the faecal samples were lyophilized.
159 Samples were transferred to a precooled glass vial. The samples were lyophilized overnight in a
160 Zirbus VaCo 5/II freeze dryer at -80 °C, with a vacuum of 0.10 mbar. For metabolite extraction, 20 mg
161 of lyophilized sample was used. A volume of 600 µL buffer 1 (D₂O, 3 mM NaN₃ and 1 mM TSP, pH 7.4)
162 and 600 µL buffer 2 (200 µL methanol-d₄ and 400 µL chloroform-d) was added to the lyophilized
163 faecal material. The samples were vortexed and incubated for 10 minutes at 4 °C. The samples were
164 then centrifuged for 10 minutes, 1100 g at 4 °C. Afterwards, 600 µL of the aqueous phase was

165 transferred to an 5 mm NMR tube. Preliminary experiments comparing the ^1H -NMR spectra of the
166 aqueous and organic phase showed improved signal in the aqueous phase compared to the organic
167 phase due to removal of the lipid background as described by Hauser et al. (Hauser et al., 2019).

168

169 *^1H NMR spectroscopy*

170 All NMR spectra were recorded using a Bruker 600 MHz AVANCE II spectrometer equipped with a
171 5 mm triple resonance inverse cryoprobe and a z-gradient system. The temperature of the samples
172 was controlled at 25 °C during measurement. Prior to data acquisition, tuning and matching of the
173 probe head followed by shimming and proton pulse calibration were performed automatically for
174 each sample. One-dimensional (1D) ^1H NMR spectra were recorded using the first increment of a
175 NOESY pulse sequence with presaturation ($\gamma B_1 = 50$ Hz) for water suppression during a relaxation
176 delay of 4 s and a mixing time of 10 ms. 64 scans of 65,536 points covering 12,335 Hz were recorded
177 and zero filled to 65,536 complex points prior to Fourier transformation, an exponential window
178 function was applied with a line-broadening factor of 1.0 Hz.

179

180 *^1H NMR data processing*

181 The spectra were phase and baseline corrected and referenced to the internal standard
182 (TSP; δ 0.0 ppm), using the MestReNova software (v.12.0.0-20080, Mesterlab Research). With the
183 same software, spectral alignment was performed selecting manually areas and applying a linear
184 filling method of the missing values, after the exclusion of the water signal and the surrounding
185 empty area (4.70-5.16 ppm). Spectral binning followed from -0.50 to 9.00 ppm with an equal size
186 binning step of 0.001 ppm. Noise removal was performed by averaging each integrated bin
187 separately, and removing the bins with an average below 0.144. The annotation of the bins,
188 highlighted as significant by the statistical analysis, was performed with the Chenomx Profiler
189 software (Chenomx NMR Suite 8.6 and Chenomx 600 MHz, version 11) and the HMDB database 5.0
190 (<http://www.hmdb.ca>).

191

192 *Statistical analysis*

193 MetaboAnalyst (version 5.0, <https://www.metaboanalyst.ca/>) was used for multivariate statistical
194 analysis of the ¹H-NMR spectra (Pang et al., 2021). Pearson's correlation analysis combined with the
195 Bonferroni correction method ($\alpha < 0.05$) was performed to correlate the bins with the patient data.
196 For confirmation of the obtained associations between the amino acids and the clinical variables as
197 well as the associations between the amino acids and the DHD-index, Pearson's correlation
198 combined with the Benjamini-Hochberg correction method ($\alpha < 0.05$) was performed. All statistical
199 analysis was performed using the psych and corrplot packages in R software version 4.0.4.

200

201

202

203

204

205

206

207

208

209

210

211

212

213

214

215

216

217

218

219 **Results**

220 *Faecal amino acids correlate with the severity of psychiatric symptoms*

221 Forty-two participants (15 SSD and 27 BD), diagnosed with either SSD or BD were analyzed in a
222 baseline cross sectional analysis as described in the methods section. To explore the potential
223 differences in the metabolic profiles among the recruited individuals, faecal samples were analyzed
224 using $^1\text{H-NMR}$. The $^1\text{H-NMR}$ spectral data (**Figure 1A**) were binned and subjected to principal
225 component analysis (PCA). No distinction among the samples obtained from the patients could be
226 observed (**Figure 1B**). Accordingly, the samples were not separated into BD and SSD subgroups in
227 further analysis.

228 The spectral bins were further processed, and the bins were correlated using Pearson correlation
229 with all the clinical characteristics of the patients (**Table 1**). Among the correlated bins, 76
230 significantly correlated with the brief psychiatric rating scale (BPRS) (Overall and Gorham, 1962).
231 Using the library of Chenomx profiler software and the online human metabolome database version
232 5.0, 51/76 significantly correlated bins were assigned to 4 key-metabolites: alanine, aspartate,
233 leucine, and valine. To confirm the positive association between the identified segments and the
234 BPRS, a representative peak in the $^1\text{H-NMR}$ spectrum (**Figure 1C**) for each amino acid was integrated,
235 normalized to trimethylsilylpropanoic acid (TSP), and correlated with the BPRS using Pearson
236 correlation (**Figure 2**). The correlations confirmed the positive association found between alanine ($r =$
237 0.64 , p value = $4.9\text{e-}5$), leucine ($r = 0.64$, p value = $4.9\text{e-}5$) and valine ($r = 0.61$, $P = 1.4\text{e-}4$) and the
238 BPRS, respectively. No other correlations were observed between the identified three amino acids
239 and any other clinical parameter, implying a possible role of the increased faecal levels of alanine,
240 leucine and valine association with higher psychiatric symptom severity (**Figure 3**).

241 Next, we observed strong correlations among the levels of the faecal alanine, leucine and valine;
242 valine-leucine ($r = 0.89$, p value = $8.12\text{e-}14$); valine-alanine ($r = 0.86$, p value = $6.62\text{e-}12$); leucine-

243 alanine ($r = 0.98$, p value = $1.14e-27$), inferring a potential common source of these amino acids. To
244 this end, the nutrient scores obtained by the Dutch healthy diet index (DHD-index) (van Lee et al.,
245 2012) (**Table 2, 3**) were correlated using Pearson's correlation, with the faecal amino acid levels.
246 Indeed, positive associations between the total dairy intake without cheese, faecal alanine ($r = 0.64$,
247 p value = $3.9e-4$) and leucine ($r = 0.59$, p value = $1.14e-3$) were observed (**Figure 4A**). Moreover, the
248 macro- and micronutrients typically present in high levels in dairy products such as calcium,
249 potassium, vitamin B2, vitamin B6 and vitamin B12 (Pereira, 2014) were positively associated with
250 the faecal levels of alanine (calcium: $r = 0.5$, p value = 0.012 ; potassium: $r = 0.48$, p value = 0.015 ;
251 vitamin B2: $r = 0.63$, p value = $7.2e-4$; vitamin B6: $r = 0.63$, p value = $7.2e-4$; vitamin B12: $r = 0.48$, p
252 value = 0.015) and leucine (calcium: $r = 0.48$, p value = 0.015 ; potassium: $r = 0.49$, p value = 0.013 ;
253 vitamin B2: $r = 0.6$, p value = $9.4e-4$; vitamin B6: $r = 0.6$, p value = $9.4e-4$; vitamin B12: $r = 0.45$, p
254 value = 0.02). The caloric and protein intake showed a positive association with the faecal amino
255 acids alanine ($r = 0.43$, p value = 0.032 ; $r = 0.54$, p value = 0.0047) and leucine ($r = 0.44$, p value =
256 0.029 ; $r = 0.54$, p value = 0.00047) (**Figure 4B**). Taken together our data show significant positive
257 associations between the dairy-related amino acids detected in faecal samples of trans-diagnosed
258 individuals and the severity of disease symptoms.

259

260

261

262

263

264

265

266

267

268

269

270

271

272 **Discussion**

273 In this study, ¹H-NMR was employed to investigate a potential role of intestinal metabolites in mental
274 illness in a trans-diagnostic approach of forty-two individuals with BD or SSD. PCA analysis confirmed
275 the similarity of pathophysiological processes with regard to faecal metabolites among individuals
276 with BD or SSD, as no separation of the metabolic profile between the two groups was detected
277 **(Figure 1B).**

278 The positive association reported in this study between the faecal amino acids, alanine, leucine,
279 valine and the psychiatric symptom severity is in agreement with other metabolomics studies
280 performed on serum, urine and cerebrospinal fluid from patients with BD. For example, elevated
281 levels of alanine were reported in BD individuals compared to healthy controls (Sethi et al., 2017a; Xu
282 et al., 2014; Yoshimi et al., 2016). Analogously, higher levels of valine were detected in urine and
283 serum samples of SSD individuals, respectively (Yang et al., 2011).

284 Our findings point to a possible common source, dairy products, of the three amino acids elevated in
285 the faecal samples of the patients. In fact, Severance et al. showed a positive correlation between
286 the negative psychiatric symptoms according to the positive and negative symptom scale (PANSS) in
287 SSD patients and serum levels of immunoglobulin G (IgG) against the α_s and κ subunit of bovine
288 casein, the major protein component in milk (Severance et al., 2010). Interestingly, leucine is the
289 major amino acid in bovine casein (Rafiq et al., 2016). Other studies have found increased levels of
290 serum immunoglobulin A and IgG against gliadin, one of the major components of gluten, in
291 individuals with BD or SSD compared to healthy controls, though the levels did not correlate with
292 psychiatric symptom severity according to the PANSS (Dickerson et al., 2011, 2010). Besides,
293 countries with a high national intake of sugar and dairy products have been reported to have a more

294 severe 2-year outcome of SSD (Peet, 2004), highlighting a key role of the diet in the severity of
295 mental illnesses.

296 In addition to the diet being a plausible source of the metabolites we detected; the increased levels
297 of these amino acids may have originated from the metabolization of the dietary components by the
298 gut microbiota. Indeed, Zheng et al. showed an increase of, among others, alanine, leucine, and
299 valine in the serum and faecal samples of mice transplanted with faecal material from SSD
300 individuals. The microbiota-based altered metabolites were further detected in the hippocampus of
301 mice transplanted with SSD faecal material and were accompanied by behavioral changes related to
302 SSD (Zheng et al., 2019), highlighting a significant role of the gut microbiota and their metabolic
303 capacity in the development of SSD.

304 The potential adverse (indirect) effects of the diet are possibly mediated by an impaired intestinal
305 barrier function. This results in increased translocation of gut- and microbiota related metabolites
306 from the lumen of the gut to the bloodstream and eventually the brain, accompanied by an
307 increased inflammatory response (Bischoff et al., 2014). Recently, Carloni et al. showed that
308 inflammation originating in the gut can induce propagation of the inflammation to the brain via
309 increasing permeability of the blood-brain barrier, which may be responsible for the observed mental
310 symptoms in individuals with inflammatory bowel disease (Carloni et al., 2021). Indeed, abnormal
311 immune responses have been reported both in patients with SSD and BD, of varying disease stages
312 and medication status (Beumer et al., 2012; Horváth and Mirnics, 2014; Muller and J. Schwarz, 2010;
313 Munkholm et al., 2013). In systematic reviews involving thousands of patients, both disorders were
314 robustly associated with increased C-reactive protein (CRP) levels, especially during early-phase acute
315 psychosis (Fond et al., 2018) and during mania (Fernandes et al., 2016). Moreover, both disorders
316 have been reported to be associated with an increased pro-inflammatory gene expression in
317 circulating monocytes (Drexhage et al., 2010) and symptom severity was found to correlate with
318 levels of inflammatory markers (Fan et al., 2010, 2007; Hope et al., 2013). Similarly, a meta-analysis
319 comparing cytokine profiles in patients with SSD, BD, and major depressive disorder demonstrated

320 manifest alterations in blood cytokine levels most consistent with an inflammatory profile and T-cell
321 activation (Goldsmith et al., 2016). This analysis with high scientific impact concluded that despite
322 between-study heterogeneity, there were remarkable similarities in the patterns that suggest that
323 abnormal immune responses may be, at least partially, responsible for the reported findings. Taken
324 together, our results highlight a potential link between elevated faecal amino acids, diet and
325 symptom severity in individuals with severe mental illness and urges for the need for further
326 investigations into the interplay between diet, brain and gut.

327

328 *Limitations*

329 The results of this research should be interpreted in light of some limitations. The small sample size
330 including potential medication effect precludes the conclusion of any causation and limits the
331 correlation analysis, as well as the lack of a matched control group. Moreover, although ¹H-NMR
332 spectroscopy-based metabolomics analysis has been shown to be a useful strategy to investigate the
333 pathophysiology of BD and SSD (Sethi et al., 2017b; Tasic et al., 2017), particularly in serum samples,
334 the sensitivity of ¹H-NMR is relatively low. Therefore, metabolites in concentrations below the
335 detection limit are missed, which impacts the outcome of the study. Nonetheless, we consider this
336 pioneer work and encourage more extensive research into the BGA in SSD and BD.

337

338 *Conclusion*

339 Overall, the present study shows a significant role of the interplay between the diet-brain-gut axis in
340 the severity of mental illness, which helps guide the development of novel dietary, and microbiota-
341 based interventions.

342

343

344

345

346

347

348

349

350

351 **Author Contributions:** Jack Jansma: Formal analysis, writing-original draft. Rogier van Essen:
352 Conceptualization, methodology, investigation. Bartholomeus C.M. Haarman: Conceptualization,
353 writing-review and editing, funding acquisition. Anastasia Chrysovalantou Chatziioannou:
354 methodology, writing-review and editing. Jenny Borkent: writing-review and editing. Magdalini
355 Ioannou: writing-review and editing. Saskia van Hemert: Conceptualization. Iris E.C. Sommer:
356 Conceptualization, funding acquisition, writing-review and editing. Sahar El Aidy: Conceptualization,
357 writing-review and editing, funding acquisition. All authors have read and agreed to the published
358 version of the manuscript.

359

360 **Institutional Review Board Statement:** The study was conducted according to the guidelines of the
361 Declaration of Helsinki, and approved by the Institutional Review Board (or Ethics Committee) of
362 University Medical Center Groningen (UMCG) (METc 2018/614; March 19, 2019).

363

364 **Informed Consent Statement:** Informed consent was obtained from all subjects involved in the
365 study.

366

367 **Data Availability Statement:** The data presented in this study are available on request from the
368 corresponding author, upon completion of the study.

369

370 **Conflicts of Interest:** S. van Hemert is employee in Winlove (Winlove manufactures and markets
371 probiotics). The content of this study was neither influenced nor constrained by this fact. The other
372 authors have no conflicts of interest to declare.

373

374 **Funding:** This research was funded by Stanley Medical Research Institute, grant number 18T-004 and
375 ZonMw, grant number 636320010.

376

377 **Acknowledgements:** We thank Dr. Johan Kemmink and ing. Pieter van der Meulen of the Stratingh
378 institute of chemistry, University of Groningen, The Netherlands for assisting us with the $^1\text{H-NMR}$
379 measurements.

380

381 **Figure legends**

382 **Figure 1: Representative examples of $^1\text{H-NMR}$ spectra**

383 A) Two $^1\text{H-NMR}$ spectra representative for an individual with BD and a low (red) and an individual
384 with SSD and a high (green) BPRS score. Both spectra are shown separately and overlapping. The
385 area of water (4.70 – 5.16 ppm) was removed. B) The scores plot of principal component analysis
386 (PCA) based on the first two principal components (PCs), which explain 77.0 % of the variance (68.7 %
387 and 8.3 % for PC1 and PC2 respectively). C) Two $^1\text{H-NMR}$ spectra representative for an individual with
388 BD and a low (red) and an individual with SSD and a high (green) BPRS score. The integrated peaks
389 are indicated with black arrows. SSD: schizophrenia spectrum disorder; BD: bipolar disorder.

390

391 **Figure 2: Schematic overview of the workflow starting with the obtained $^1\text{H-NMR}$ spectra**

392 A schematic overview depicting the workflow performed starting with the binned spectra. For each
393 step, the number of bins removed or retained is indicated. BPRS: brief psychiatric symptom scale;
394 Benj.-Hoch.: Benjamini-Hochberg.

395

396 **Figure 3: Pearson's correlation of the clinical variables and amino acids**

397 Pearson's r correlation between the relative area under the curve of a representative peak
398 corresponding to the amino acids and clinical variables. *, $P < 0.05$, **, $P < 0.01$, ***, $P < 0.001$, ****,
399 $P < 0.0001$. GSRS: gastrointestinal rating scale; BPRS: brief psychiatric symptom scale; CRP: C-reactive
400 protein; BMI: body mass index.

401

402 **Figure 4: Pearson's correlation of the amino acids and the BPRS with the Dutch healthy diet index.**

403 A) Pearson's correlations between the daily intake of participants per category according to the
404 Dutch healthy diet (DHD) index (van Lee et al., 2012). B) Pearson's correlations between the daily
405 macro and micro nutrient intake of participants according to the DHD index. Only significant
406 correlations are colored ($P < 0.05$). The correlation coefficient is given for each significant association.

407 **Tables and Figures**

408 **Tables:**

409 **Table 1: Clinical variables of the cohort**

410 The clinical variables, blood parameters and medication intake of the cohort. The median of each
411 variable is given with the minimal and maximal value in brackets. SSD: schizophrenia spectrum
412 disorder; BD: bipolar disorder; BMI: body mass index; BPRS: brief psychiatric rating scale; GSRS:
413 gastrointestinal symptoms rating scale; Syst: systolic; Dias: diastolic; CRP: C-reactive protein

Clinical variables	Number of participants	Median (Min – Max)
Participants	42	
SSD	16	
BD	26	
Male	16	
Age	42	51 (22-64)
Height (cm)	39	173.5 (160.0-194.0)
Weight (cm)	39	75.0 (57.5-120.5)
BMI (kg/m ²)	39	24.5 (18.3-35.3)

Waist size (cm)	28	94 (71-123)
BPRS	42	34 (24-62)
GSRS	41	36 (18-68)
Heartrate (/min)	38	66 (45-100)
Syst. blood pressure (mmHg)	39	129 (104-175)
Dias. blood pressure (mmHg)	39	82 (69-110)

Blood parameters

Albumin (g/L)	42	46 (39-49)
Glucose (mmol/L)	42	5.4 (4.0-13.0)
CRP (mg/L)	42	0.9 (0.3-23.0)
HDL-cholesterol (mmol/L)	42	1.3 (0.7-3.0)
Triglyeride (mmol/L)	42	1.2 (0.3-4.0)

Medication

Haloperidol	1
Arpriprazol	3
Clozapine	1
Quetiapine	1
Risperidon	2
Lithium	9
Valproate	3
Quetiapine & lithium	3
Haloperidol & lamotrigine	1
Olanzapine & valproate	1
Olanzapine & lithium	2
Aripriprazol & lithium	1
Clozapine & topiramate	1
Haloperidol & lithium	1
Antidepressants	8

414

415

416

417
418
419
420
421
422
423
424
425
426
427
428
429
430

Table 2: Daily intake of participants per category and the macro- and micronutrient density according to the Dutch healthy diet index

The daily intake of the participants per category and the macro- and micronutrient density according to the Dutch healthy diet index (van Lee et al., 2012). The median of each category is given with the minimal and maximal value in brackets. DHD: Dutch healthy diet; Sweet. Bever.: Sweetened beverages; MUFA: monounsaturated fatty acid; PUFA: polyunsaturated fatty acid; PUFA-C3: N3-fatty acids; PUFA-C6: N6-fatty acids; EPA: Eicosapentaenoic acid; DHA: Docosahexaenoic acid.

DHD index product categories	Number of participants	Median (Min – Max)
Vegetables (g/day)	41	125.8 (5.4-374.4)
Fruit (g/day)	41	138.7 (8.4-305.9)
Whole grain products (g/day)	41	139.5 (0-312.6)
Refined grain products (g/day)	41	22.6 (0-176.7)
Legumes (g/day)	40	8.7 (-0-69.7)
Nuts (g/day)	40	11.6 (0-81.2)
Dairy without cheese (g/day)	41	133.2 (0-1486.6)
Fish (g/day)	41	7.8 (0-19.2)
Tea (g/day)	39	150.0 (0-1338.0)
Red meat (g/day)	40	9.1 (0-101.5)
Processed meat (g/day)	41	8.3 (0-98.3)
Sweet. Bever. And fruit juice (g/day)	41	22.1 (0-602.9)
Soft fats (g/day)	41	13.0 (0-39.5)

Hard fats (g/day)	41	0 (0-39.5)
Cheese (g/day)	41	13.3 (0-40.0)
<i>DHD-index nutrient scores</i>		
Energy (kJ/day)	41	6197.16 (3051.52 -12636.45)
Protein (g/day)	41	51.64 (19.15-141.31)
Vegetable protein (g/day)	41	27.51 (10.92-53.65)
Total fat (g/day)	41	64.07 (24.74-107.66)
Saturated fat (g/day)	41	24.54 (11.89-45.62)
MUFA (g/day)	41	21.34 (7.72-41.45)
PUFA (g/day)	41	11.01 (3.08-23.82)
Transfat (g/day)	41	1.14 (0.40-2.38)
PUFA-C3 (g/day)	41	1.42 (0.40-2.76)
PUFA-C6 (g/day)	41	9.29 (2.43-20.45)
Alpha-linolenic acid (g/day)	41	1.20 (0.39-2.48)
EPA (g/day)	41	0.06 (0-15)
DHA (g/day)	41	0.09 (0-0.22)
Cholesterol (g/day)	41	114.77 (41.01-255.11)
Carbohydrates (g/day)	41	162.84 (-93.51-369.23)
Monosaccharides (g/day)	41	59.45 (33.82-209.92)
Polysaccharides (g/day)	41	95.73 (38.68-209.92)
Fiber (g/day)	41	19.61 (6.76-35.73)
Water (g/day)	41	1584.99 (716.56-3146.15)
Alcohol (g/day)	41	3.13 (0-37.55)
Calcium (mg/day)	41	601.63 (214.14-2175.02)
Total iron (mg/day)	41	8.82 (3.46-14.76)
Heme iron (mg/day)	41	0.37 (0.02-1.94)
Non-heme iron (mg/day)	41	8.42 (3.38-13.71)
Sodium (mg/day)	41	1550.17 (716.56-3146.15)
Potassium (mg/day)	41	2460.72 (1032.51-5778.82)
Magnesium (mg/day)	41	316.83 (149.82-568.42)
Zinc (mg/day)	41	7.29 (3.11-15.55)

Selenium (mg/day)	41	35.38 (9.74-72.12)
Copper (mg/day)	41	1.18 (0.54-2.21)
Vitamin B1 (mg/day)	41	0.81 (0.37-1.96)
Vitamin B2 (mg/day)	41	0.81 (0.32-3.87)
Vitamin B6 (mg/day)	41	1.22 (0.44-3.88)
Vitamin B12 (µg/day)	41	2.32 (0.22-7.75)
Vitamin D (µg/day)	41	2.00 (0.28-6.50)
Vitamin E (mg/day)	41	8.31 (4.01-18.38)
Vitamin C (mg/day)	41	70.53 (15.96-190.76)
Retinol (µg/day)	41	317.30 (117.77-824.17)
Folic acid equivalents (µg/day)	41	196.81 (93.28-512.60)
Folic acid (µg/day)	41	189.38 (93.29-416.75)

431

432

433

434

435

436

437

438

439

440

441

442

443

444

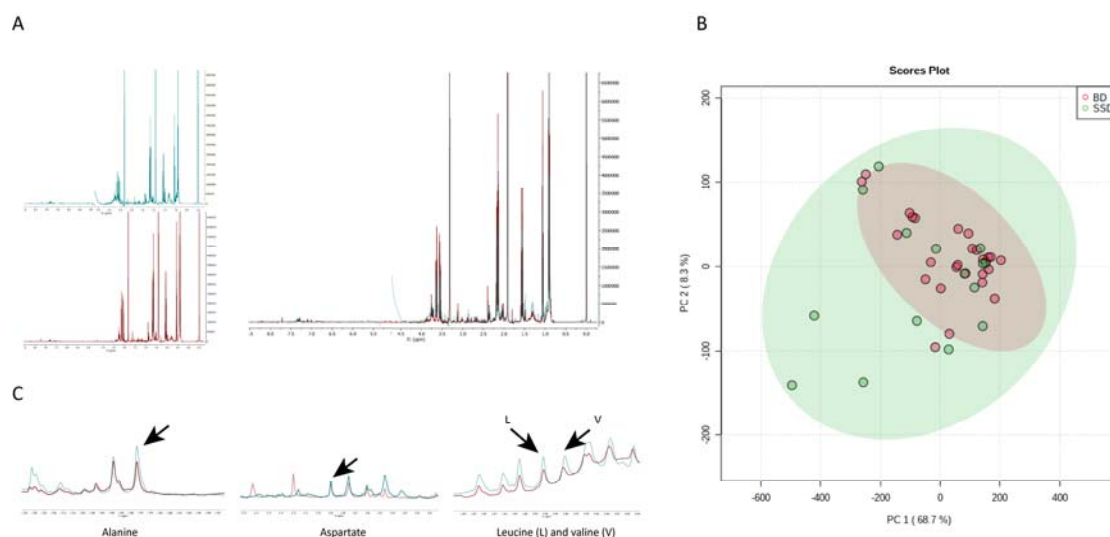
445

446

447

448
449
450
451
452
453

454 Figures



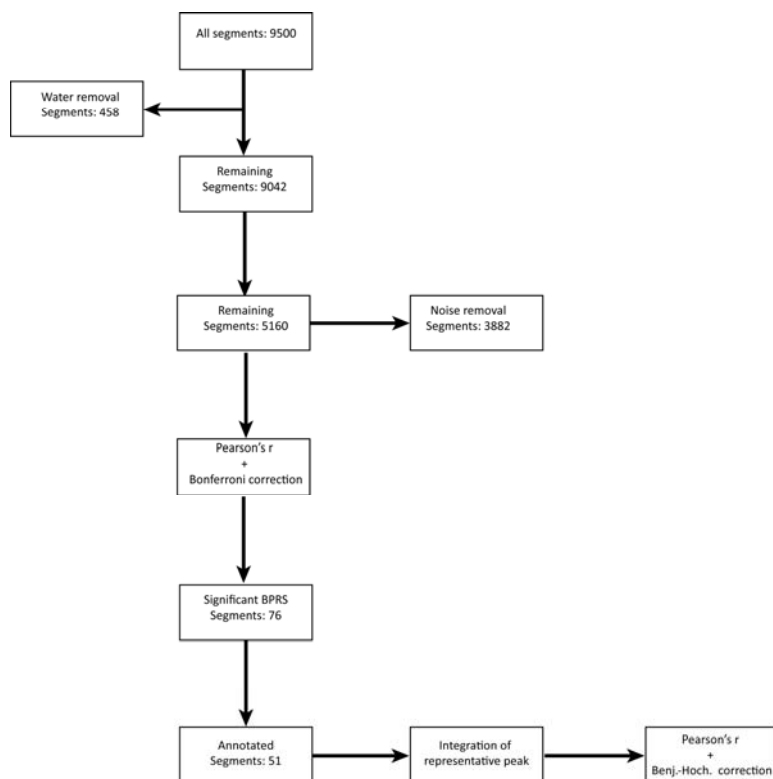
455
456

457 Figure 1: Representative examples of ¹H-NMR spectra

458 A) Two ¹H-NMR spectra representative for an individual with BD and a low (red) and an individual
459 with SSD and a high (green) BPRS score. Both spectra are shown separately and overlapping. The
460 area of water (4.70 – 5.16 ppm) was removed. B) The scores plot of principal component analysis
461 (PCA) based on the first two principal components (PCs), which explain 77.0 % of the variance (68.7 %
462 and 8.3 % for PC1 and PC2 respectively). C) Two ¹H-NMR spectra representative for an individual with
463 BD and a low (red) and an individual with SSD and a high (green) BPRS score. The integrated peaks
464 are indicated with black arrows. SSD: schizophrenia spectrum disorder; BD: bipolar disorder.

465
466

467
468
469
470
471
472

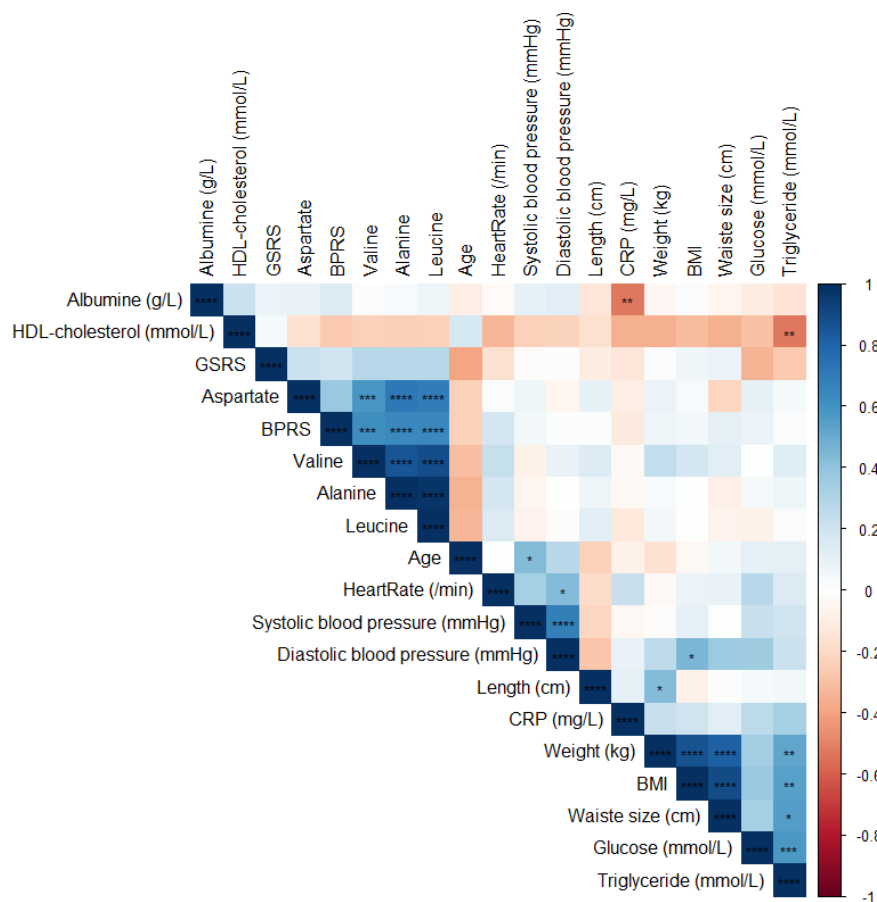


473
474
475
476
477
478
479
480
481

Figure 2: Schematic overview of the workflow starting with the obtained ¹H-NMR spectra

A schematic overview depicting the workflow performed starting with the binned spectra. For each step, the number of bins removed or retained is indicated. BPRS: brief psychiatric symptom scale; Benj.-Hoch.: Benjamini-Hochberg.

482
483
484
485
486
487
488



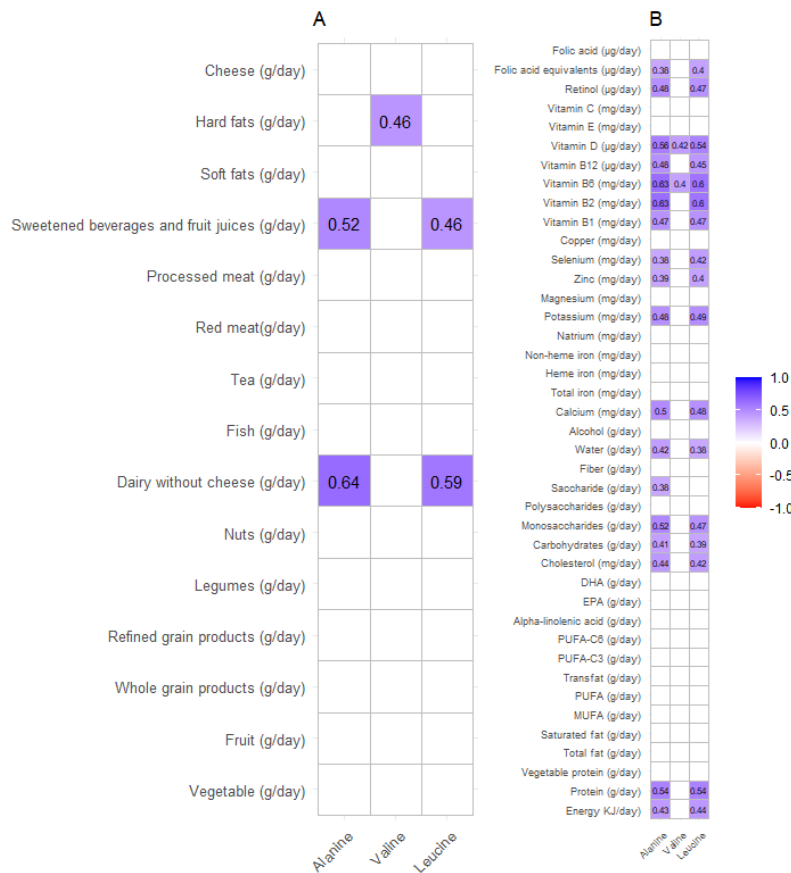
489

490 **Figure 3: Pearson's correlation of the clinical variables and amino acids**

491 Pearson's r correlation between the relative area under the curve of a representative peak
492 corresponding to the amino acids and clinical variables. *, $P < 0.05$, **, $P < 0.01$, ***, $P < 0.001$, ****,
493 $P < 0.0001$. GSRS: gastrointestinal rating scale; BPRS: brief psychiatric symptom scale; CRP: C-reactive
494 protein; BMI: body mass index.

495

496
497
498
499
500
501
502
503
504



505

506 **Figure 4: Pearson's correlation of the amino acids and the BPRS with the Dutch healthy diet index.**

507 A) Pearson's correlations between the daily intake of participants per category according to the

508 Dutch healthy diet (DHD) index (van Lee et al., 2012). B) Pearson's correlations between the daily

509 macro and micro nutrient intake of participants according to the DHD index. Only significant
510 correlations are colored ($P < 0.05$). The correlation coefficient is given for each significant association.

511

512

513

514

515

516

517

518 **References**

- 519 Barber, G.S., Sturgeon, C., Fasano, A., Cascella, N.G., Eaton, W.W., McMahon, R.P., Kelly, D.L., 2019.
520 Elevated zonulin, a measure of tight-junction permeability, may be implicated in schizophrenia.
521 Schizophrenia Research. <https://doi.org/10.1016/j.schres.2019.07.006>
- 522 Beumer, W., Gibney, S.M., Drexhage, R.C., Pont-Lezica, L., Doorduyn, J., Klein, H.C., Steiner, J., Connor,
523 T.J., Harkin, A., Versnel, M.A., Drexhage, H.A., 2012. The immune theory of psychiatric diseases:
524 a key role for activated microglia and circulating monocytes. *Journal of Leukocyte Biology* 92,
525 959–975. <https://doi.org/10.1189/JLB.0212100>
- 526 Bischoff, S.C., Barbara, G., Buurman, W., Ockhuizen, T., Schulzke, J.D., Serino, M., Tilg, H., Watson, A.,
527 Wells, J.M., 2014. Intestinal permeability - a new target for disease prevention and therapy.
528 *BMC Gastroenterology*. <https://doi.org/10.1186/s12876-014-0189-7>
- 529 Cai, H.Q., Catts, V.S., Webster, M.J., Galletly, C., Liu, D., O'Donnell, M., Weickert, T.W., Weickert, C.S.,
530 2018. Increased macrophages and changed brain endothelial cell gene expression in the frontal
531 cortex of people with schizophrenia displaying inflammation. *Molecular Psychiatry* 2018 25:4
532 25, 761–775. <https://doi.org/10.1038/s41380-018-0235-x>
- 533 Cai, H.Q., Weickert, T.W., Catts, V.S., Balzan, R., Galletly, C., Liu, D., O'Donnell, M., Shannon Weickert,
534 C., 2020. Altered levels of immune cell adhesion molecules are associated with memory
535 impairment in schizophrenia and healthy controls. *Brain, Behavior, and Immunity* 89, 200–208.
536 <https://doi.org/10.1016/J.BBI.2020.06.017>
- 537 Carloni, S., Bertocchi, A., Mancinelli, S., Bellini, M., Erreni, M., Borreca, A., Braga, D., Giugliano, S.,
538 Mozzarelli, A.M., Manganaro, D., Perez, D.F., Colombo, F., Sabatino, A. di Pasini, D., Penna, G.,
539 Matteoli, M., Lodato, S., Rescigno, M., 2021. Identification of a choroid plexus vascular barrier
540 closing during intestinal inflammation. *Science* 374, 439–448.
541 <https://doi.org/10.1126/SCIENCE.ABC6108>
- 542 Carvalho, A.F., Firth, J., Vieta, E., 2020. Bipolar Disorder. <https://doi.org/10.1056/NEJMra1906193>
543 383, 58–66. <https://doi.org/10.1056/NEJMRA1906193>
- 544 Chelakkot, C., Ghim, J., Ryu, S.H., 2018. Mechanisms regulating intestinal barrier integrity and its
545 pathological implications. *Experimental & Molecular Medicine* 2018 50:8 50, 1–9.
546 <https://doi.org/10.1038/s12276-018-0126-x>

- 547 Dickerson, F., Stallings, C., Origoni, A., Vaughan, C., Khushalani, S., Alaedini, A., Yolken, R., 2011.
548 Markers of gluten sensitivity and celiac disease in bipolar disorder. *Bipolar Disorders* 13, 52–58.
549 <https://doi.org/10.1111/J.1399-5618.2011.00894.X>
- 550 Dickerson, F., Stallings, C., Origoni, A., Vaughan, C., Khushalani, S., Leister, F., Yang, S., Krivogorsky, B.,
551 Alaedini, A., Yolken, R., 2010. Markers of Gluten Sensitivity and Celiac Disease in Recent-Onset
552 Psychosis and Multi-Episode Schizophrenia. *Biological Psychiatry* 68, 100–104.
553 <https://doi.org/10.1016/J.BIOPSYCH.2010.03.021>
- 554 Drexhage, R., Knijff, E., Padmos, R., van der Heul-Nieuwenhuijsen, L., Beumer, W., Versnel, M., 2010.
555 The mononuclear phagocyte system and its cytokine inflammatory networks in schizophrenia
556 and bipolar disorder. *Expert Review of Neurotherapeutics* 10, 59–76.
557 <https://doi.org/10.1586/ERN.09.144>
- 558 Evans, S.J., Bassis, C.M., Hein, R., Assari, S., Flowers, S.A., Kelly, M.B., Young, V.B., Ellingrod, V.E.,
559 McInnis, M.G., 2017. The gut microbiome composition associates with bipolar disorder and
560 illness severity. *Journal of Psychiatric Research* 87, 23–29.
561 <https://doi.org/10.1016/J.JPSYCHIRES.2016.12.007>
- 562 Fan, X., Liu, E.Y., Freudenreich, O., Park, J.H., Liu, D., Wang, J., Yi, Z., Goff, D., Henderson, D.C., 2010.
563 Higher white blood cell counts are associated with an increased risk for metabolic syndrome
564 and more severe psychopathology in non-diabetic patients with schizophrenia. *Schizophrenia*
565 *Research* 118, 211–217. <https://doi.org/10.1016/J.SCHRES.2010.02.1028>
- 566 Fan, X., Pristach, C., Liu, E.Y., Freudenreich, O., Henderson, D.C., Goff, D.C., 2007. Elevated serum
567 levels of C-reactive protein are associated with more severe psychopathology in a subgroup of
568 patients with schizophrenia. *Psychiatry Research* 149, 267–271.
569 <https://doi.org/10.1016/J.PSYCHRES.2006.07.011>
- 570 Fernandes, B.S., Steiner, J., Molendijk, M.L., Dodd, S., Nardin, P., Gonçalves, C.-A., Jacka, F., Köhler,
571 C.A., Karmakar, C., Carvalho, A.F., Berk, M., 2016. C-reactive protein concentrations across the
572 mood spectrum in bipolar disorder: a systematic review and meta-analysis. *The Lancet*.
573 *Psychiatry* 3, 1147–1156. [https://doi.org/10.1016/S2215-0366\(16\)30370-4](https://doi.org/10.1016/S2215-0366(16)30370-4)
- 574 Flowers, S.A., Evans, S.J., Ward, K.M., McInnis, M.G., Ellingrod, V.L., 2017. Interaction Between
575 Atypical Antipsychotics and the Gut Microbiome in a Bipolar Disease Cohort. *Pharmacotherapy:*
576 *The Journal of Human Pharmacology and Drug Therapy* 37, 261–267.
577 <https://doi.org/10.1002/PHAR.1890>
- 578 Fond, G., Lançon, C., Auquier, P., Boyer, L., 2018. C-reactive protein as a peripheral biomarker in
579 schizophrenia. An updated systematic review. *Frontiers in Psychiatry* 9, 1–12.
580 <https://doi.org/10.3389/fpsy.2018.00392>
- 581 Genedi, M., Janmaat, I.E., Haarman, B.C.M., Sommer, I.E.C., 2019. Dysregulation of the gut-brain axis
582 in schizophrenia and bipolar disorder: Probiotic supplementation as a supportive treatment in
583 psychiatric disorders. *Current Opinion in Psychiatry* 32, 185–195.
584 <https://doi.org/10.1097/YCO.0000000000000499>
- 585 Goldsmith, D.R., Rapaport, M.H., Miller, B.J., 2016. A meta-analysis of blood cytokine network
586 alterations in psychiatric patients: comparisons between schizophrenia, bipolar disorder and
587 depression. *Molecular psychiatry* 21, 1696–1709. <https://doi.org/10.1038/mp.2016.3>

- 588 Gupta, S., Masand, P.S., Kaplan, D., Bhandary, A., Hendricks, S., 1997. The relationship between
589 schizophrenia and irritable bowel syndrome (IBS). *Schizophrenia Research* 23, 265–268.
590 [https://doi.org/10.1016/S0920-9964\(96\)00099-0](https://doi.org/10.1016/S0920-9964(96)00099-0)
- 591 Hauser, A., Eisenmann, P., Muhle-Goll, C., Luy, B., Dötsch, A., Graf, D., Tzvetkova, P., 2019. Efficient
592 Extraction from Mice Feces for NMR Metabolomics Measurements with Special Emphasis on
593 SCFAs. *Metabolites* 9. <https://doi.org/10.3390/METABO9030055>
- 594 Hope, S., Ueland, T., Steen, N.E., Dieset, I., Lorentzen, S., Berg, A.O., Agartz, I., Aukrust, P.,
595 Andreassen, O.A., 2013. Interleukin 1 receptor antagonist and soluble tumor necrosis factor
596 receptor 1 are associated with general severity and psychotic symptoms in schizophrenia and
597 bipolar disorder. *Schizophrenia Research* 145, 36–42.
598 <https://doi.org/10.1016/J.SCHRES.2012.12.023>
- 599 Horrobin, D.F., Glen, A.I.M., Vaddadi, K., 1994. The membrane hypothesis of schizophrenia.
600 *Schizophrenia Research* 13, 195–207. [https://doi.org/10.1016/0920-9964\(94\)90043-4](https://doi.org/10.1016/0920-9964(94)90043-4)
- 601 Horváth, S., Mirnics, K., 2014. Immune System Disturbances in Schizophrenia. *Biological Psychiatry*
602 75, 316–323. <https://doi.org/10.1016/J.BIOPSYCH.2013.06.010>
- 603 Kılıç, F., Işık, Ü., Demirdaş, A., Doğuç, D.K., Bozkurt, M., 2020. Serum zonulin and claudin-5 levels in
604 patients with bipolar disorder. *Journal of Affective Disorders* 266, 37–42.
605 <https://doi.org/10.1016/j.jad.2020.01.117>
- 606 Kulich, K.R., Madisch, A., Pacini, F., Piqué, J.M., Regula, J., van Rensburg, C.J., Újszászy, L., Carlsson, J.,
607 Halling, K., Wiklund, I.K., 2008. Reliability and validity of the Gastrointestinal Symptom Rating
608 Scale (GSRS) and Quality of Life in Reflux and Dyspepsia (QOLRAD) questionnaire in dyspepsia: A
609 six-country study. *Health and Quality of Life Outcomes* 6, 1–12. <https://doi.org/10.1186/1477-7525-6-12>
- 611 Lee, Y.-T., Hu, L.-Y., Shen, C.-C., Huang, M.-W., Tsai, S.-J., Yang, A.C., Hu, C.-K., Perng, C.-L., Huang, Y.-
612 S., Hung, J.-H., 2015. Risk of Psychiatric Disorders following Irritable Bowel Syndrome: A
613 Nationwide Population-Based Cohort Study. *PLOS ONE* 10, e0133283.
614 <https://doi.org/10.1371/JOURNAL.PONE.0133283>
- 615 Ligezka, A.N., Sonmez, A.I., Corral-Frias, M.P., Golebiowski, R., Lynch, B., Croarkin, P.E., Romanowicz,
616 M., 2020. A systematic review of microbiome changes and impact of probiotic supplementation
617 in children and adolescents with neuropsychiatric disorders. *Progress in Neuro-
618 Psychopharmacology and Biological Psychiatry*. <https://doi.org/10.1016/j.pnpbp.2020.110187>
- 619 Looman, M., Feskens, E.J.M., de Rijk, M., Meijboom, S., Biesbroek, S., Temme, E.H.M., de Vries, J.,
620 Geelen, A., 2017. Development and evaluation of the Dutch Healthy Diet index 2015. *Public
621 Health Nutrition* 20, 2289–2299. <https://doi.org/10.1017/S136898001700091X>
- 622 Lucidi, L., Pettorruso, M., Vellante, F., di Carlo, F., Ceci, F., Santovito, M.C., di Muzio, I., Fornaro, M.,
623 Ventriglio, A., Tomasetti, C., Valchera, A., Gentile, A., Kim, Y.K., Martinotti, G., Fraticelli, S., di
624 Giannantonio, M., de Berardis, D., 2021. Gut microbiota and bipolar disorder: An overview on a
625 novel biomarker for diagnosis and treatment. *International Journal of Molecular Sciences*.
626 <https://doi.org/10.3390/ijms22073723>
- 627 McCutcheon, R.A., Marques, T.R., Howes, O.D., 2020. Schizophrenia—An Overview. *JAMA Psychiatry*
628 77, 201–210. <https://doi.org/10.1001/JAMAPSYCHIATRY.2019.3360>

- 629 Mörkl, S., Wagner-Skacel, J., Lahousen, T., Lackner, S., Holasek, S.J., Bengesser, S.A., Painold, A., Holl,
630 A.K., Reininghaus, E., 2020. The role of nutrition and the gut-brain axis in psychiatry: A review of
631 the literature. *Neuropsychobiology*. <https://doi.org/10.1159/000492834>
- 632 Müller, N., 2018. Inflammation in Schizophrenia: Pathogenetic Aspects and Therapeutic
633 Considerations. *Schizophrenia Bulletin* 44, 973–982. <https://doi.org/10.1093/SCHBUL/SBY024>
- 634 Muller, N., J. Schwarz, M., 2010. The Role of Immune System in Schizophrenia. *Current Immunology*
635 *Reviews* 6, 213–220. <https://doi.org/10.2174/157339510791823673>
- 636 Munkholm, K., Braüner, J.V., Kessing, L.V., Vinberg, M., 2013. Cytokines in bipolar disorder vs. healthy
637 control subjects: A systematic review and meta-analysis. *Journal of Psychiatric Research* 47,
638 1119–1133. <https://doi.org/10.1016/J.JPSYCHIRES.2013.05.018>
- 639 Nasdala, I., Wolburg-Buchholz, K., Wolburg, H., Kuhn, A., Ebnet, K., Brachtendorf, G., Samulowitz, U.,
640 Kuster, B., Engelhardt, B., Vestweber, D., Butz, S., 2002. A Transmembrane Tight Junction
641 Protein Selectively Expressed on Endothelial Cells and Platelets. *Journal of Biological Chemistry*
642 277, 16294–16303. <https://doi.org/10.1074/JBC.M111999200>
- 643 Nguyen, T.T., Kosciolk, T., Maldonado, Y., Daly, R.E., Martin, A.S., McDonald, D., Knight, R., Jeste, D.
644 v., 2019. Differences in gut microbiome composition between persons with chronic
645 schizophrenia and healthy comparison subjects. *Schizophrenia Research* 204, 23–29.
646 <https://doi.org/10.1016/J.SCHRES.2018.09.014>
- 647 Overall, J.E., Gorham, D.R., 1962. THE BRIEF PSYCHIATRIC RATING SCALE1, Psychological Reports. @
648 Southern Universiites Press.
- 649 Pang, Z., Chong, J., Zhou, G., de Lima Morais, D.A., Chang, L., Barrette, M., Gauthier, C., Jacques, P.-É.,
650 Li, S., Xia, J., 2021. MetaboAnalyst 5.0: narrowing the gap between raw spectra and functional
651 insights. *Nucleic Acids Research* 49, W388–W396. <https://doi.org/10.1093/NAR/GKAB382>
- 652 Peet, M., 2004. International variations in the outcome of schizophrenia and the prevalence of
653 depression in relation to national dietary practices: An ecological analysis. *The British Journal of*
654 *Psychiatry* 184, 404–408. <https://doi.org/10.1192/BJP.184.5.404>
- 655 Pereira, P.C., 2014. Milk nutritional composition and its role in human health. *Nutrition* 30, 619–627.
656 <https://doi.org/10.1016/J.NUT.2013.10.011>
- 657 Pouget, J.G., Gonçalves, V.F., Consortium, S.W.G. of the P.G., Spain, S.L., Finucane, H.K.,
658 Raychaudhuri, S., Kennedy, J.L., Knight, J., 2016. Genome-Wide Association Studies Suggest
659 Limited Immune Gene Enrichment in Schizophrenia Compared to 5 Autoimmune Diseases.
660 *Schizophrenia Bulletin* 42, 1176–1184. <https://doi.org/10.1093/SCHBUL/SBW059>
- 661 Rafiq, S., Huma, N., Pasha, I., Sameen, A., Mukhtar, O., Khan, M.I., 2016. Chemical Composition,
662 Nitrogen Fractions and Amino Acids Profile of Milk from Different Animal Species. *Asian-*
663 *Australasian Journal of Animal Sciences* 29, 1022. <https://doi.org/10.5713/AJAS.15.0452>
- 664 Sethi, S., Pedrini, M., Rizzo, L.B., Zeni-Graiff, M., Mas, C.D., Cassinelli, A.C., Noto, M.N., Asevedo, E.,
665 Cordeiro, Q., Pontes, J.G.M., Brasil, A.J.M., Lacerda, A., Hayashi, M.A.F., Poppi, R., Tasic, L.,
666 Brietzke, E., 2017a. 1H-NMR, 1H-NMR T2-edited, and 2D-NMR in bipolar disorder metabolic
667 profiling. *International Journal of Bipolar Disorders* 2017 5:1 5, 1–9.
668 <https://doi.org/10.1186/S40345-017-0088-2>

- 669 Sethi, S., Pedrini, M., Rizzo, L.B., Zeni-Graiff, M., Mas, C.D., Cassinelli, A.C., Noto, M.N., Asevedo, E.,
670 Cordeiro, Q., Pontes, J.G.M., Brasil, A.J.M., Lacerda, A., Hayashi, M.A.F., Poppi, R., Tasic, L.,
671 Brietzke, E., 2017b. 1H-NMR, 1H-NMR T2-edited, and 2D-NMR in bipolar disorder metabolic
672 profiling. *International Journal of Bipolar Disorders* 2017 5:1 5, 1–9.
673 <https://doi.org/10.1186/S40345-017-0088-2>
- 674 Severance, E.G., Dickerson, F.B., Halling, M., Krivogorsky, B., Haile, L., Yang, S., Stallings, C.R., Origoni,
675 A.E., Bossis, I., Xiao, J., Dupont, D., Haasnoot, W., Yolken, R.H., 2010. Subunit and whole
676 molecule specificity of the anti-bovine casein immune response in recent onset psychosis and
677 schizophrenia. *Schizophrenia Research* 118, 240–247.
678 <https://doi.org/10.1016/J.SCHRES.2009.12.030>
- 679 Severance, E.G., Gressitt, K.L., Stallings, C.R., Origoni, A.E., Khushalani, S., Leweke, F.M., Dickerson,
680 F.B., Yolken, R.H., 2013. Discordant patterns of bacterial translocation markers and implications
681 for innate immune imbalances in schizophrenia. *Schizophrenia Research* 148, 130–137.
682 <https://doi.org/10.1016/J.SCHRES.2013.05.018>
- 683 Severance, E.G., Prandovszky, E., Castiglione, J., Yolken, R.H., 2015. Gastroenterology Issues in
684 Schizophrenia: Why the Gut Matters. *Current Psychiatry Reports* 2015 17:5 17, 1–10.
685 <https://doi.org/10.1007/S11920-015-0574-0>
- 686 Sublette, M.E., Cheung, S., Lieberman, E., Hu, S., Mann, J.J., Uhlemann, A.-C., Miller, J.M., 2021.
687 Bipolar disorder and the gut microbiome: A systematic review. *Bipolar Disorders* 23, 544–564.
688 <https://doi.org/10.1111/BDI.13049>
- 689 Tasic, L., Pontes, J.G.M., Carvalho, M.S., Cruz, G., Dal Mas, C., Sethi, S., Pedrini, M., Rizzo, L.B., Zeni-
690 Graiff, M., Asevedo, E., Lacerda, A.L.T., Bressan, R.A., Poppi, R.J., Brietzke, E., Hayashi, M.A.F.,
691 2017. Metabolomics and lipidomics analyses by 1H nuclear magnetic resonance of
692 schizophrenia patient serum reveal potential peripheral biomarkers for diagnosis. *Schizophrenia*
693 *Research* 185, 182–189. <https://doi.org/10.1016/J.SCHRES.2016.12.024>
- 694 Uhlén, M., Fagerberg, L., Hallström, B.M., Lindskog, C., Oksvold, P., Mardinoglu, A., Sivertsson, Å.,
695 Kampf, C., Sjöstedt, E., Asplund, A., Olsson, I., Edlund, K., Lundberg, E., Navani, S., Szgyarto,
696 C.A.-K., Odeberg, J., Djureinovic, D., Takanen, J.O., Hober, S., Alm, T., Edqvist, P.-H., Berling, H.,
697 Tegel, H., Mulder, J., Rockberg, J., Nilsson, P., Schwenk, J.M., Hamsten, M., Feilitzten, K. von,
698 Forsberg, M., Persson, L., Johansson, F., Zwahlen, M., Heijne, G. von, Nielsen, J., Pontén, F.,
699 2015. Tissue-based map of the human proteome. *Science* 347.
700 <https://doi.org/10.1126/SCIENCE.1260419>
- 701 Usta, A., Kılıç, F., Demirdaş, A., Işık, Ü., Doğuç, D.K., Bozkurt, M., 2021. Serum zonulin and claudin-5
702 levels in patients with schizophrenia. *European Archives of Psychiatry and Clinical Neuroscience*
703 271, 767–773. <https://doi.org/10.1007/s00406-020-01152-9>
- 704 van Lee, L., Geelen, A., van Huysduynen, E.J.C.H., de Vries, J.H.M., van't Veer, P., Feskens, E.J.M.,
705 2012. The Dutch Healthy Diet index (DHD-index): an instrument to measure adherence to the
706 Dutch Guidelines for a Healthy Diet. *Nutrition Journal* 2012 11:1 11, 1–9.
707 <https://doi.org/10.1186/1475-2891-11-49>
- 708 Xu, X.-J., Zheng, P., Ren, G.-P., Liu, M.-L., Mu, J., Guo, J., Cao, D., Liu, Z., Meng, H.-Q., Xie, P., 2014.
709 2,4-Dihydropyrimidine is a potential urinary metabolite biomarker for diagnosing bipolar
710 disorder. *Molecular BioSystems* 10, 813–819. <https://doi.org/10.1039/C3MB70614A>

- 711 Xu, Y., Amdanee, N., Zhang, X., 2021. Antipsychotic-Induced Constipation: A Review of the
712 Pathogenesis, Clinical Diagnosis, and Treatment. *CNS Drugs* 1–10.
713 <https://doi.org/10.1007/S40263-021-00859-0/TABLES/4>
- 714 Yang, J., Chen, T., Sun, L., Zhao, Z., Qi, X., Zhou, K., Cao, Y., Wang, X., Qiu, Y., Su, M., Zhao, A., Wang,
715 P., Yang, P., Wu, J., Feng, G., He, L., Jia, W., Wan, C., 2011. Potential metabolite markers of
716 schizophrenia. *Molecular Psychiatry* 2013 18:1 18, 67–78.
717 <https://doi.org/10.1038/mp.2011.131>
- 718 Yoshimi, N., Futamura, T., Bergen, S.E., Iwayama, Y., Ishima, T., Sellgren, C., Ekman, C.J., Jakobsson, J.,
719 Pålsson, E., Kakumoto, K., Ohgi, Y., Yoshikawa, T., Landén, M., Hashimoto, K., 2016.
720 Cerebrospinal fluid metabolomics identifies a key role of isocitrate dehydrogenase in bipolar
721 disorder: evidence in support of mitochondrial dysfunction hypothesis. *Molecular Psychiatry*
722 2016 21:11 21, 1504–1510. <https://doi.org/10.1038/mp.2015.217>
- 723 Zheng, P., Zeng, B., Liu, M., Chen, J., Pan, J., Han, Y., Liu, Y., Cheng, K., Zhou, C., Wang, H., Zhou, X.,
724 Gui, S., Perry, S.W., Wong, M.L., Licinio, J., Wei, H., Xie, P., 2019. The gut microbiome from
725 patients with schizophrenia modulates the glutamate-glutamine-GABA cycle and schizophrenia-
726 relevant behaviors in mice. *Science Advances* 5. <https://doi.org/10.1126/SCIADV.AAU8317>
- 727
- 728