

**Authors:** Nick Bundle<sup>1\*</sup>, Nishi Dave<sup>1</sup>, Anastasia Pharris<sup>1</sup>, Gianfranco Spiteri<sup>1</sup>, Charlotte Deogan<sup>1</sup>, Jonathan E. Suk<sup>1</sup>, and study group members<sup>2</sup>

**Author affiliations:**

1. European Centre for Disease Prevention and Control (ECDC), Stockholm, Sweden
2. Study group members: Cyprus: Soteroulla Soteriou, Anna Papandreou, Valentinos Silvestros, Maria Athanasiadou, Theopisti Kyprianou, Anna Demetriou; Finland: Otto Helve, Emmi Sarvikivi; Germany: Silke Buda, Barbara Hauer, Walter Haas, Thorsten Wolff; Ireland: Aoife Colgan, Kate O'Donnell; Italy: Antonino Bella

**Title**

COVID-19 trends and severity among symptomatic children aged 0-17 years in ten EU countries, 3 August 2020 – 3 October 2021

**Abstract**

To guide evidence-based prevention of COVID-19 in children, we estimated risks of severe outcomes in 820,404 symptomatic paediatric cases reported by 10 EU Member States between August 2020 and October 2021. Case and hospitalisation rates rose as overall transmission increased but severe outcomes were rare: 9,611 (1.2%) were hospitalised, 640 (0.08%) required intensive care and 84 (0.01%) died. Despite increased individual risk (aOR; 95% CI for hospitalisation: 7.3; 3.3 - 16.2, ICU: 8.7; 6.2 - 12.3) in cases with comorbidities such as cancer, diabetes, cardiac or lung disease, most (83.7%) hospitalised children had no reported comorbidity.

**Manuscript**

**Understanding the burden of COVID-19 in children in Europe**

Understanding the burden of COVID-19 among children is essential for evidence-based decision-making regarding the vaccination of children, as well as for assessing the importance of SARS-CoV-2 mitigation measures in specific settings, such as in schools [1]. Here, we report on the burden and severity of symptomatic notified COVID-19 cases among children in the EU.

We analysed, using R v4.1.1, pooled case-based surveillance data reported to the European Surveillance System (TESSy) by 10 EU countries (Austria, Cyprus, Finland, Germany, Ireland, Italy, Luxembourg, Malta, Slovakia and Sweden) for symptomatic COVID-19 cases (reported as symptomatic or with a date of onset), between weeks 32-2020 and 43-2021. Data were restricted to weeks 32-2020 to 39-2021 to account for delayed reporting of the outcomes: hospitalisation, ICU (admission to ICU and/or requiring ventilation or ECMO) or death. We compared the cumulative number of reported deaths by each country [2] to official data from public sources [3], with a minimum 90% completeness threshold for study inclusion. Time series of reported hospital and ICU admissions were compared to those of admission or occupancy data obtained from public sources[4] , excluding countries with reported time series that were incomplete or whose peaks occurred at different times. Outcomes reported as 'unknown' were recoded to 'no' for deaths from all countries, and for hospitalisation/ICU from Ireland (following national practice) and Sweden (all cases were coded as 'yes' or 'unknown'). Hospitalisation/ICU status was recoded to 'no' if date of hospitalisation preceded date of onset to minimise inclusion of incidental hospital

admissions in the crude risk numerators. Remaining cases with unknown outcome or sex were excluded.

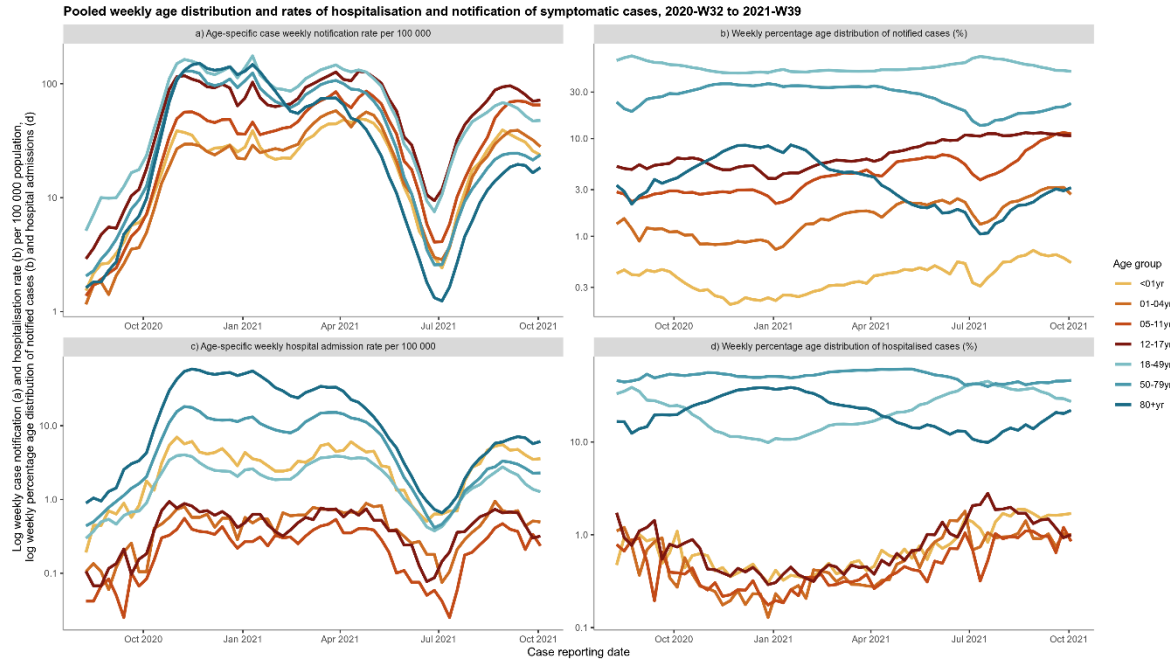
We described trends in pooled weekly rates and proportions by age group of notified symptomatic cases and hospital admissions for the entire study period. Age-specific cumulative case notification rates per 100 000 population and crude risk for hospitalisation, ICU (among all cases and among hospitalised cases) and death were estimated by age group in years and in months <2 years using a subset of data from seven countries (Austria, Cyprus, Finland, Ireland, Luxembourg, Slovakia and Sweden) reporting age in months. We considered the overall period and the period in which the delta variant of concern was dominant, based on country-specific estimates of when alpha-delta co-circulation ceased (defined as alpha falling to 5% of reported weekly sequences, median weeks 28-2021 to 39-2021). Age-specific distributions of the outcomes between period and by sex within the overall period were compared using Chi-squared tests.

A subset of data from seven countries (Cyprus, Finland, Italy, Luxembourg, Malta, Slovakia and Sweden) reporting data on comorbidities (coded in TESSy as cancer, diabetes, cardiac disease, lung disease, neuromuscular disease; HIV, asthma, kidney disease, hypertension, pregnancy, liver disease, obesity; smoker/history of smoking) was analysed to estimate AR stratified by presence or absence of any comorbidities, having removed cases with unknown comorbidity. We used logistic regression to estimate age-specific (<1, 1-4, 5-11, 12-17) and overall (0-17 years) adjusted odds ratios (aOR) for each outcome for cases with and without any comorbidity.

### **Trends in case notification and hospitalisation**

Weekly notification rates among symptomatic cases increased sharply in all age groups in EU/EEA countries from July 2021 (Figure 1a). Hospitalisation rates also increased in all age groups in line with cases, but from much lower levels in children than in adults (Figure 1c). Since January 2021, children have represented an increasing proportion of total reported cases and hospital admissions although the proportion of hospitalisations have stabilised somewhat since July (Figure 1b, d).

**Figure 1: Weekly age distribution and rates of notified symptomatic COVID-19 cases and hospital admissions reported to TESSy, pooled from 10 EU countries, weeks 32-2020 to 39-2021**



During the period 32-2020 to 39-2021, cumulative case rates reported among a total of 820,404 symptomatic paediatric cases (12.4% of 6,604,483 cases of all ages) increased with every additional year of age from 2-17 years (Table 1). Hospitalisation was reported for 9,611 (1.2%) cases, ICU for 640 (0.08% of all cases, 6.7% of hospitalised cases) and death for 84 (0.01%). Limiting to children aged 2-17 years, the overall risks of these outcomes fell to 0.8%, 0.06%, 7.5% and 0.01%, respectively. The risk of hospitalisation was highest among the youngest infants (0-2 months), with point estimates that decreased with increasing age in months or years to 9 years and then increased with each year from 12 to 17. Males aged 0-17 years were slightly more likely than females to be admitted to hospital (1.2% vs 1.1%,  $p < 0.0001$ ) or ICU (0.09% vs 0.07%,  $p < 0.05$ ), but these differences did not exist in all paediatric age groups. Results consistent with the full period were obtained for periods coinciding with delta dominance, although hospitalisation was more common among children <1 year (RISK 14.7% delta vs 13.1% full period,  $p < 0.01$ ; all other outcomes/age groups  $p > 0.14$ ).

**Table 1: Age-specific counts and crude risks of severe COVID-19 outcomes by age, pooled from 10 EU countries, weeks 32-2020 to 39-2021**

Age	Symptomatic Cases	Cases per 100k population	Hospitalisation		ICU		Death		ICU among hospitalised cases
			n	Crude risk % (95% CI)	n	Crude risk % (95% CI)	n	Crude risk % (95% CI)	Crude risk % (95% CI)
<b>Total 0-23 months (1)</b>	<b>8258</b>		<b>695</b>	<b>8.42 (7.83 - 9.04)</b>	<b>95</b>	<b>1.15 (0.93 - 1.40)</b>	<b>8</b>	<b>0.10 (0.04 - 0.19)</b>	<b>13.67 (11.20 - 16.45)</b>
0-2 months	1243		320	25.74 (23.33 - 28.27)	39	3.14 (2.24 - 4.26)	3	0.24 (0.05 - 0.70)	12.19 (8.81 - 16.28)
3-5 months	869		101	11.62 (9.57 - 13.94)	18	2.07 (1.23 - 3.25)	0		17.82 (10.92 - 26.70)
6-8 months	995		64	6.43 (4.99 - 8.14)	11	1.11 (0.55 - 1.97)	2	0.20 (0.02 - 0.72)	17.19 (8.90 - 28.68)
9-11 months	1085		63	5.81 (4.49 - 7.37)	6	0.55 (0.20 - 1.20)	0		9.52 (3.58 - 19.59)
12-17 months	2042		82	4.02 (3.21 - 4.96)	7	0.34 (0.14 - 0.71)	2	0.10 (0.01 - 0.35)	8.54 (3.50 - 16.80)
18-23 months	2024		65	3.21 (2.49 - 4.08)	14	0.69 (0.38 - 1.16)	1	0.05 (0.00 - 0.27)	21.54 (12.31 - 33.49)

It is made available under a [CC-BY 4.0 International license](https://creativecommons.org/licenses/by/4.0/) .

Total 0-17 years, full period (2)	820404	2692	9611	1.17 (1.15 - 1.20)	640	0.08 (0.07 - 0.08)	84	0.01 (0.01 - 0.01)	6.66 (6.17 - 7.18)
<1 year	22518	1432	2952	13.11 (12.67 - 13.56)	142	0.63 (0.53 - 0.74)	15	0.07 (0.04 - 0.11)	4.81 (4.07 - 5.65)
1 year	24797	1525	852	3.44 (3.21 - 3.67)	44	0.18 (0.13 - 0.24)	5	0.02 (0.01 - 0.05)	5.16 (3.78 - 6.87)
2 years	23032	1384	471	2.04 (1.87 - 2.24)	22	0.10 (0.06 - 0.14)	4	0.02 (0.00 - 0.04)	4.67 (2.95 - 6.99)
3 years	24573	1452	324	1.32 (1.18 - 1.47)	14	0.06 (0.03 - 0.10)	3	0.01 (0.00 - 0.04)	4.32 (2.38 - 7.14)
4 years	24858	1484	265	1.07 (0.94 - 1.20)	15	0.06 (0.03 - 0.10)	6	0.02 (0.01 - 0.05)	5.66 (3.20 - 9.16)
5 years	26494	1574	241	0.91 (0.80 - 1.03)	18	0.07 (0.04 - 0.11)	4	0.02 (0.00 - 0.04)	7.47 (4.49 - 11.55)
6 years	31300	1881	225	0.72 (0.63 - 0.82)	20	0.06 (0.04 - 0.10)	1	0.00 (0.00 - 0.02)	8.89 (5.51 - 13.39)
7 years	34857	2062	230	0.66 (0.58 - 0.75)	14	0.04 (0.02 - 0.07)	3	0.01 (0.00 - 0.03)	6.09 (3.37 - 10.00)
8 years	39241	2325	253	0.64 (0.57 - 0.73)	23	0.06 (0.04 - 0.09)	3	0.01 (0.00 - 0.02)	9.09 (5.85 - 13.33)
9 years	44703	2588	266	0.60 (0.53 - 0.67)	24	0.05 (0.03 - 0.08)	0		9.02 (5.87 - 13.13)
10 years	50126	2914	315	0.63 (0.56 - 0.70)	31	0.06 (0.04 - 0.09)	3	0.01 (0.00 - 0.02)	9.84 (6.79 - 13.68)
11 years	54337	3120	307	0.56 (0.50 - 0.63)	29	0.05 (0.04 - 0.08)	4	0.01 (0.00 - 0.02)	9.45 (6.42 - 13.28)
12 years	58210	3371	328	0.56 (0.50 - 0.63)	26	0.04 (0.03 - 0.07)	4	0.01 (0.00 - 0.02)	7.93 (5.24 - 11.40)
13 years	61897	3621	374	0.60 (0.54 - 0.67)	35	0.06 (0.04 - 0.08)	6	0.01 (0.00 - 0.02)	9.36 (6.61 - 12.77)
14 years	63855	3737	430	0.67 (0.61 - 0.74)	49	0.08 (0.06 - 0.10)	8	0.01 (0.01 - 0.02)	11.40 (8.55 - 14.78)
15 years	70862	4091	477	0.67 (0.61 - 0.74)	38	0.05 (0.04 - 0.07)	7	0.01 (0.00 - 0.02)	7.97 (5.70 - 10.77)
16 years	77353	4490	567	0.73 (0.67 - 0.80)	40	0.05 (0.04 - 0.07)	1	0.00 (0.00 - 0.01)	7.05 (5.09 - 9.48)
17 years	87391	5043	734	0.84 (0.78 - 0.90)	56	0.06 (0.05 - 0.08)	7	0.01 (0.00 - 0.02)	7.63 (5.81 - 9.79)
1-4 years	97260	1461	1912	1.97 (1.88 - 2.06)	95	0.10 (0.08 - 0.12)	18	0.02 (0.01 - 0.03)	4.97 (4.04 - 6.04)
5-11 years	281058	2359	1837	0.65 (0.62 - 0.68)	159	0.06 (0.05 - 0.07)	18	0.01 (0.00 - 0.01)	8.66 (7.41 - 10.04)
12-17 years	419568	4061	2910	0.69 (0.67 - 0.72)	244	0.06 (0.05 - 0.07)	33	0.01 (0.01 - 0.01)	8.38 (7.40 - 9.45)
18-49 years	3339485	4702	86961	2.60 (2.59 - 2.62)	10293	0.31 (0.30 - 0.31)	2837	0.08 (0.08 - 0.09)	11.84 (11.62 - 12.05)
50-79 years	2095032	3143	277377	13.24 (13.19 - 13.29)	59911	2.86 (2.84 - 2.88)	73672	3.52 (3.49 - 3.54)	21.60 (21.45 - 21.75)
80+ years	349562	2948	141502	40.48 (40.32 - 40.64)	16136	4.62 (4.55 - 4.69)	116871	33.43 (33.28 - 33.59)	11.40 (11.24 - 11.57)

CI = confidence interval. 1. Analysis of a subset of cases with data on age in months under 2 years of age, weeks 2020-32 to 2021-39, from seven countries (Austria, Cyprus, Finland, Ireland, Luxembourg, Slovakia and Sweden). Case rates per 100 000 population are not provided for these age groups. 2. Full dataset for the period weeks 2020-32 to 2021-39. 3. Full dataset restricted to the period of Delta dominance (defined per country, median dates: 2021-28 to 2021-39).

## Stratification by presence of any comorbidity

Data on comorbidities were available for 210,008 out of 460,790 cases (45.6%) from seven countries. Among these, 203,548 (96.9%) reported having none, 5,773 (2.7%) one and 687 (0.3%) two or more comorbidities. Data on comorbidities were less likely to be reported for hospitalised than non-hospitalised paediatric cases (30.0% vs 45.8%,  $p < 0.0001$ ). Overall, crude risks for each outcome were higher among children with at least one comorbidity than none. After controlling for reporting country, period and sex, adjusted odds of hospitalisation, ICU admission and death were seven, nine and 27 times higher, respectively, among cases with at least one comorbidity compared to those with none (Table 2).

**Table 2: Age-specific counts, crude risks and adjusted odds ratios for severe COVID-19 outcomes comparing cases with and without any comorbidity, pooled from seven EU countries, weeks 32-2020 to 39-2021**

It is made available under a [CC-BY 4.0 International license](https://creativecommons.org/licenses/by/4.0/).

Outcome	Age	Any comorbidity	Symptomatic Cases	Cases with outcome	Crude stratified risk		Adjusted relative risk (1)
					Risk, % (95% CI)	p-value	aOR (95% CI)
Hospitalisation	Total 0-17 years	No	203548	1506	0.74 (0.70 - 0.78)		
Hospitalisation	Total 0-17 years	Yes	6460	293	4.54 (4.04 - 5.07)	<0.0001	7.29 (3.28 - 16.20)
Hospitalisation	<1 year	No	3812	537	14.09 (13.00 - 15.23)		
Hospitalisation	<1 year	Yes	184	37	20.11 (14.57 - 26.64)	<0.05	1.68 (0.38 - 7.41)
Hospitalisation	1-4 years	No	16054	275	1.71 (1.52 - 1.93)		
Hospitalisation	1-4 years	Yes	419	56	13.37 (10.26 - 17.00)	<0.0001	8.95 (5.02 - 15.95)
Hospitalisation	5-11 years	No	68152	273	0.40 (0.35 - 0.45)		
Hospitalisation	5-11 years	Yes	1791	77	4.30 (3.41 - 5.34)	<0.0001	11.98 (9.02 - 15.91)
Hospitalisation	12-17 years	No	115530	421	0.36 (0.33 - 0.40)		
Hospitalisation	12-17 years	Yes	4066	123	3.03 (2.52 - 3.60)	<0.0001	9.28 (5.92 - 14.54)
ICU	Total 0-17 years	No	203548	102	0.05 (0.04 - 0.06)		
ICU	Total 0-17 years	Yes	6460	32	0.50 (0.34 - 0.70)	<0.0001	8.74 (6.22 - 12.27)
ICU	<1 year	No	3812	32	0.84 (0.57 - 1.18)		
ICU	<1 year	Yes	184	2	1.09 (0.13 - 3.87)	1	1.72 (0.30 - 9.96)
ICU	1-4 years	No	16054	21	0.13 (0.08 - 0.20)		
ICU	1-4 years	Yes	419	6	1.43 (0.53 - 3.09)	<0.0001	10.25 (5.70 - 18.45)
ICU	5-11 years	No	68152	15	0.02 (0.01 - 0.04)		
ICU	5-11 years	Yes	1791	9	0.50 (0.23 - 0.95)	<0.0001	18.56 (10.12 - 34.06)
ICU	12-17 years	No	115530	34	0.03 (0.02 - 0.04)		
ICU	12-17 years	Yes	4066	15	0.37 (0.21 - 0.61)	<0.0001	10.25 (7.55 - 13.90)
Death	Total 0-17 years	No	203548	22	0.01 (0.01 - 0.02)		
Death	Total 0-17 years	Yes	6460	14	0.22 (0.12 - 0.36)	<0.0001	26.85 (4.97 - 145.05)
Death	<1 year	No	3812	4	0.10 (0.03 - 0.27)		
Death	<1 year	Yes	184	1	0.54 (0.01 - 2.99)	0.56	9.05 (0.70 - 117.78)
Death	1-4 years	No	16054	6	0.04 (0.01 - 0.08)		
Death	1-4 years	Yes	419	1	0.24 (0.01 - 1.32)	0.44	7.02 (0.62 - 79.09)
Death	5-11 years	No	68152	2	0.00 (0.00 - 0.01)		
Death	5-11 years	Yes	1791	6	0.34 (0.12 - 0.73)	<0.0001	158.61 (19.06 - 1,319.58)
Death	12-17 years	No	115530	10	0.01 (0.00 - 0.02)		
Death	12-17 years	Yes	4066	6	0.15 (0.05 - 0.32)	<0.0001	24.81 (4.49 - 137.05)
ICU among hospitalised cases	Total 0-17 years	No	1506	102	6.77 (5.56 - 8.16)		
ICU among hospitalised cases	Total 0-17 years	Yes	293	32	10.92 (7.59 - 15.07)	<0.05	1.24 (0.95 - 1.62)
ICU among hospitalised cases	<1 year	No	537	32	5.96 (4.11 - 8.31)		
ICU among hospitalised cases	<1 year	Yes	37	2	5.41 (0.66 - 18.19)	1	0.73 (0.29 - 1.88)
ICU among hospitalised cases	1-4 years	No	275	21	7.64 (4.79 - 11.44)		
ICU among hospitalised cases	1-4 years	Yes	56	6	10.71 (4.03 - 21.88)	0.62	1.37 (0.65 - 2.89)
ICU among hospitalised cases	5-11 years	No	273	15	5.49 (3.11 - 8.90)		
ICU among hospitalised cases	5-11 years	Yes	77	9	11.69 (5.49 - 21.03)	0.1	1.58 (0.94 - 2.66)
ICU among hospitalised cases	12-17 years	No	421	34	8.08 (5.66 - 11.10)		
ICU among hospitalised cases	12-17 years	Yes	123	15	12.20 (6.99 - 19.32)	0.22	1.18 (0.74 - 1.90)

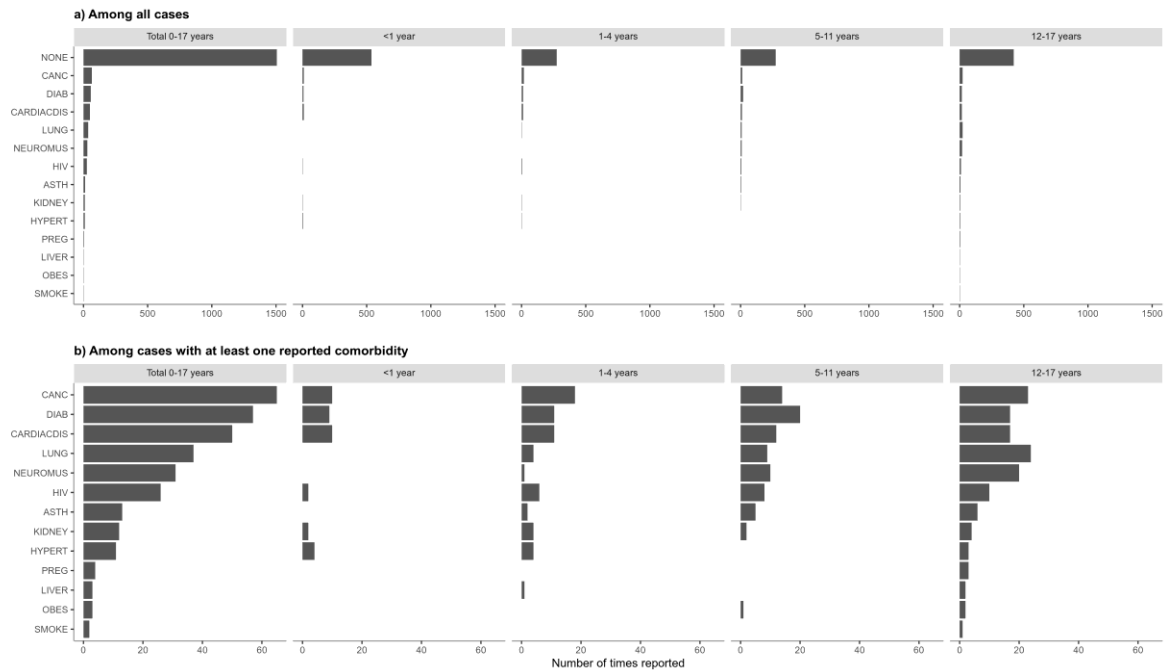
1. Logistic regression models: for Total 0-17 years: outcome ~ any comorbidity + age group (<1, 1-4, 5-11, 12-17 years) + covariables period (weeks 32-2020 to 53-2020 (pre-vaccine period), 1-2021 to 21-2021 (alpha variant dominant), 22-2021 to 27-2021 (alpha and delta co-circulating), 28-2021 to 39-2021 (delta variant dominant), sex (male/female) and reporting country. Robust standard errors accounting for clustering on reporting country. Age-group specific estimates were obtained using an interaction between age group and any comorbidity.

## Distribution of comorbidities among hospitalised cases

Of the 210,008 paediatric cases with data on comorbidities, 83.7% (1,506/1,799) of those hospitalised were reported not to have any. This proportion fell with increasing age: 93.6% (<1 year), 83.1% (1-4 years), 78.0% (5-11 years) and 77.4% (12-17 years). Among 293 (16.3%) hospitalised cases reporting a total of 314 comorbidities (19 cases had more than one), the most frequently reported conditions were cancer (20.7%), diabetes (18.2%), cardiac (15.9%) and lung

(11.8%) disease (Figure 2b). Cancer (n=7) followed by HIV (5), lung disease (5), cardiac disease (4) and diabetes (4) were most common among the 34/136 (25.0%) cases admitted to ICU reporting at least one comorbidity, and 14/36 fatal cases had at least one comorbidity.

**Figure 2: Occurrence of reported comorbidities among hospitalised paediatric COVID-19 cases by age group, pooled from seven EU countries, weeks 32-2020 to 39-2021, a) among all cases and b) among cases with at least one reported comorbidity**



Notes: CANC=Cancer; DIAB=Diabetes; CARDIACDIS=Cardiac disease; LUNG=Lung disease; NEUROMUS=neuromuscular disease; HIV=human immunodeficiency virus; ASTH=asthma; KIDNEY=kidney disease; HYPERT=hypertension; PREG=pregnancy (including post-partum); LIVER=liver disease; OBES=obesity; SMOKE=smoker/history of smoking. One instance each of smoker and pregnancy reported in two infants aged 0 months (<1 year) are not shown in the figure since it was not possible to confirm if this coding related to the mother.

## Discussion

As of week 47-2021 only 15.2% (range: 1.0-29.0%) of children <18 years of age in the EU/EEA (22.1%; range 7.2-25.5% in the 10 countries included in this study) have been fully vaccinated against COVID-19 [5]. The European Medicines Agency (EMA) is currently evaluating the emergency authorisation of Comirnaty in children aged 5-11 years old [6]. The evidence presented here on the burden of COVID-19 in children indicates that case notification and hospital admission rates among children rise as transmission increases, but that most children with symptomatic COVID-19 have a very low risk of death or hospitalisation. For every 10,000 symptomatic paediatric cases reported during the, approximately 117 were hospitalised and eight required ICU admission or respiratory support.

The high incidence in many parts of the EU/EEA mean large numbers of unvaccinated children are likely to be exposed to the virus, leading to increases in the absolute numbers of children with severe COVID-19 outcomes. In addition, perhaps particularly for countries that have achieved high

levels of vaccination coverage in adults, the bulk of community transmission could be increasingly among children [7]. Thus, tailored national guidance and appropriate mitigation measures, notably in schools and other places where children congregate, will continue to be essential [1].

This study highlights that while the individual risk of a severe COVID-19 outcome is low among healthy children, these risks are substantially elevated for children with underlying risk factors [8]. Despite the low individual risks to healthy children, 83.7% of all hospitalised childhood COVID-19 cases had no reported comorbidity, demonstrating the additive impact of high levels of community transmission.

The elevated risks of hospitalisation observed for children less than 2 years of age likely reflects low threshold for admission in this age group, however the increased risk and data on the presence of SARS-CoV-2 antibodies in breastmilk need to be studied further urgently to support paediatric clinical decision-making and the provision of information on vaccination to pregnant women [9]. Further research is required also to clarify risk factors for severe outcomes among children, including <2 years of age.

This analysis did not consider other health impacts of COVID-19 on children such as the prevalence and burden of paediatric inflammatory multisystem syndrome (PIMS) or post-COVID-19 syndrome in children, as well as the numerous indirect negative health and mental health impacts on children caused by disruptions to their social and educational lives [1]. Such factors would, nonetheless, be important considerations for decision-making about vaccination of children [10].

There are important limitations to this study. The analysis is based on surveillance data reported to TESSy. Data on vaccination status of the children in this study was not available, however vaccination rates in children were very low generally and vaccines only approved for use in children 12-17 years at the time of the study. As children are less likely to be symptomatic for COVID-19 than adults [11,12], reporting of cases may be biased towards those with severe disease, and although cases with hospitalisation date prior to date of onset were considered not hospitalised for this analysis, some remaining reported paediatric hospitalisations may have been for reasons other than COVID-19. While this could over-estimate the crude risk of hospitalisation, we are aware that hospitalisations are under-reported to TESSy by at least three of the countries in our study, which would have the opposite effect, and our results are comparable to those reported among symptomatic cases in a recent review [10]. Reporting of comorbidities was less likely among cases with severe outcomes, making our effect estimates conservative for cases with a comorbidity. Low numbers of children with severe outcomes diminish the analytical power of the study, particularly for less common outcomes. This, together with incomplete reporting of comorbidities, prevented a detailed risk factor analysis.

## Conclusions

COVID-19 hospital admissions in children increase in line with increasing case numbers. Individual risks of a severe COVID-19 outcome are substantially elevated for those with a comorbidity compared to healthy children, however most children hospitalised in this study had no reported comorbidity. This demonstrates the additive impact of high levels of community transmission and can inform decision-making around which groups of children to offer COVID-19 vaccination. Preventive measures to reduce transmission and severe outcomes in children remain critical.

## Declaration of interest

None to report

## Acknowledgements

We thank the TESSy data managers for their ongoing support and all people involved in the ECDC COVID-19 response. Special thanks are due to ECDC staff who work tirelessly on the weekly processing and analysis of TESSy data, who have provided input to or reviewed this work, in particular Tommi Karki, Enrique Delgado, Gaetano Marrone, Pasi Penttinen and Ole Heuer. We would like to acknowledge Richard Pebody, Piers Mook and Maarten Vanhaverbeke from the WHO Regional Office for Europe for their ideas and critical review which help shaped this work. The European COVID-19 surveillance network is jointly coordinated by the ECDC and the WHO Regional Office for Europe. The authors are grateful to all network members and National Focal Points for Viral Respiratory Disease for kindly collecting, uploading and helping in the interpretation of weekly European surveillance data. We particularly thank experts from the countries included in this study (listed in alphabetical order): Austria (Stephan Aberle, Monika Redlberger-Fritz and Daniela Schmid), Cyprus (Costas Constantinou, Ioanna Gregoriou, Christos Karagiannis, and Barbara Zinieri), Finland (Idil Hussein, Niina Ikonen, Maia Jeganova, Jeremia Kapanen, Mia Kontio, Jan-Erik Löflund, Merit Melin and Carita Savolainen-Kopra), Germany (Doris Altmann, Christian Drosten, Andreas Tille), Ireland (Jeff Connell, John Cuddihy, Gillian Cullen, Lorraine Doherty, Lisa Domegan, Linda Dunford, Margaret Fitzgerald, Patricia Garvey, Derval Igoe, Sarah Jackson, Jolita Mereckiene, Niamh Murphy and Joan O'Donnell), Italy (Angela Di Martino, Simona Puzelli, Flavia Riccardo, Caterina Rizzo and Paola Stefanelli), Luxembourg (Tamir Abdelrahman, Joël Mossong and Gerard Scheiden), Malta (Christopher Barbara, Maria Louise Borg, Warren Bruno, Charmaine Gauci, Jackie Maistre Melillo and Tanya Melillo), Slovakia (Ivan Bakoss, Eva Chmelanova, Ivan Kapitáň, Ján Mikas, Jana Námesňná, Jozef Nováček, Maria Ondekova and Edita Staronová) and Sweden (Sören Andersson, Mia Brytting, AnnaSara Carnahan, Shaman Muradrasoli, Moa Rehn and Katherina Zakikhany).

## Author contributions

NB, ND, CD, AP, JS conceived the study. NB conducted the data analysis. The country study group authors conducted COVID-19 surveillance and data collections in their respective countries. NB, CD, AP, JS drafted the manuscript, with all authors providing input and contributing to its finalisation.

## Data sharing statement

All relevant data are within the paper. Access to data requests for subsets of COVID-19 TESSy datasets can be requested from the European Centre for Disease Prevention and Control.



## References

1. European Centre for Disease Prevention and Control. COVID-19 in children and the role of school settings in transmission - second update. Stockholm2021.
2. European Centre for Disease Control and Prevention. Data on the daily number of new reported COVID-19 cases and deaths by EU/EEA country. 2021. Available at: <https://www.ecdc.europa.eu/en/publications-data/data-daily-new-cases-covid-19-eueea-country>
3. European Centre for Disease Control and Prevention. Sources – EU/EEA regional data on COVID-19. 2021. Available at: <https://www.ecdc.europa.eu/en/publications-data/sources-eueea-regional-data-covid-19>
4. European Centre for Disease Control and Prevention. Data on hospital and ICU admission rates and current occupancy for COVID-19. 2021. Available at: <https://www.ecdc.europa.eu/en/publications-data/download-data-hospital-and-icu-admission-rates-and-current-occupancy-covid-19>
5. European Centre for Disease Prevention and Control. COVID-19 Vaccine tracker. 2021. Available at: <https://vaccinetracker.ecdc.europa.eu/public/extensions/COVID-19/vaccine-tracker.html#age-group-tab>
6. European Medicines Agency. EMA starts evaluating use of COVID-19 vaccine Comirnaty in children aged 5 to 11. 2021 18 October 2021 Available at: <https://www.ema.europa.eu/en/news/ema-starts-evaluating-use-covid-19-vaccine-comirnaty-children-aged-5-11>
7. Paul LA, Daneman N, Schwartz KL, Science M, Brown KA, Whelan M, et al. Association of Age and Pediatric Household Transmission of SARS-CoV-2 Infection. *JAMA Pediatr*. 2021 Aug 16
8. Shi Q, Wang Z, Liu J, Wang X, Zhou Q, Li Q, et al. Risk factors for poor prognosis in children and adolescents with COVID-19: A systematic review and meta-analysis. *EClinicalMedicine*. 2021 Nov;41:101155.
9. Young BE, Seppo AE, Diaz N, Rosen-Carole C, Nowak-Wegrzyn A, Cruz Vasquez JM, et al. Association of Human Milk Antibody Induction, Persistence, and Neutralizing Capacity With SARS-CoV-2 Infection vs mRNA Vaccination. *JAMA Pediatrics*. 2021 Available at: <https://doi.org/10.1001/jamapediatrics.2021.4897>
10. Zimmermann P, Pittet LF, Finn A, Pollard AJ, Curtis N. Should children be vaccinated against COVID-19? *Archives of Disease in Childhood*. 2021:archdischild-2021-323040. Available at: <https://adc.bmj.com/content/archdischild/early/2021/11/01/archdischild-2021-323040.full.pdf>
11. Meuris C, Kremer C, Geerinck A, Locquet M, Bruyère O, Defêche J, et al. Transmission of SARS-CoV-2 After COVID-19 Screening and Mitigation Measures for Primary School Children Attending School in Liège, Belgium. *JAMA Network Open*. 2021;4(10):e2128757-e. Available at: <https://doi.org/10.1001/jamanetworkopen.2021.28757>
12. Dawood FS, Porucznik CA, Veguilla V, Stanford JB, Duque J, Rolfes MA, et al. Incidence Rates, Household Infection Risk, and Clinical Characteristics of SARS-CoV-2 Infection Among Children and Adults in Utah and New York City, New York. *JAMA Pediatrics*. 2021 Available at: <https://doi.org/10.1001/jamapediatrics.2021.4217>