

1 Management and containment of a SARS-CoV-2 Beta variant outbreak at the
2 Malawi University of Science and Technology

3 Gama Bandawe¹, Petros Chigwechokha¹, Precious Kunyenje¹, Yohane Kazembe¹, Jeverson
4 Mwale¹, Madalitso Kamaliza¹, Mtsunge Mpakati¹, Yanjanani Nyakanyaka¹, Charles
5 Makamo¹, Saizi Kimu¹, Mwayiwawo Madanitsa¹, Joseph Bitilinyu Bangoh², Tonney
6 Nyirenda³, Richard Luhanga⁴, Martha Sambani¹, Benard Mvula⁵, Jennifer Giandhari⁶,
7 Sureshnee Pillay⁶, Yeshnee Naidoo⁶, Upasana Ramphal⁶, James Emmanuel San⁶, Houriiyah
8 Tegally⁶, Eduan Wilkinson^{6,7}, Tulio de Oliveira^{6,7}, Address Malata¹.

9 November 13, 2021

10

11 **Abstract**

12 Outbreaks of COVID at university campuses can spread rapidly and threaten the broader
13 community. We describe the management of an outbreak at a Malawian university in April-
14 May 2021 during Malawi's second wave. Classes were suspended following detection of
15 infections by routine testing and campus-wide PCR mass testing was conducted. Fifty seven
16 cases were recorded, 55 among students, two among staff. Classes resumed 28 days after
17 suspension following two weeks without cases. Just 6.3% of full-time staff and 87.4% of
18 outsourced staff tested while 65% of students at the main campus and 74% at the extension
19 campus were tested. Final year students had significantly higher positivity and lower testing
20 coverage compared to freshmen. All viruses sequenced were beta variant and at least four

¹ Malawi University of Science and Technology, Thyolo, Malawi

² Ministry of Health, Malawi

³ Kamuzu University of Health Sciences, Blantyre, Malawi

⁴ DREAM Molecular Laboratory, Blantyre, Malawi

⁵ Public Health Institute of Malawi, Lilongwe, Malawi

⁶ University of KwaZulu-Natal, Durban, South Africa

⁷ Stellenbosch University, Stellenbosch, South Africa

21 separate virus introductions onto campus were observed. These findings are useful for
22 development of campus outbreak responses and indicate the need to emphasize staff, males
23 and senior students in testing.

24

25 **Article Summary Line:** Successful management of a campus outbreak using test trace and
26 isolate approach with resumption within a month following suspension of all in-person
27 classes. Trends in voluntary testing by gender, age and year of study that can help in
28 formation of future management approaches.

29 **Running Title:** Campus COVID outbreak at a Malawian university

30 **Keywords:** SARS-CoV-2, students, qRT-PCR

31

32 **Introduction**

33 Educational institutions such as boarding schools and universities are considered important
34 focal points in the transmission of SARS-CoV-2 throughout the broader community (1).
35 Once transmission is established in a semi-closed university community, growth of the
36 epidemic is expected to be rapid and control becomes extremely difficult (2). With outbreaks
37 observed at university campuses globally (3) and in schools around Malawi, local authorities
38 under the guidance of the Presidential Task Force on COVID-19 ordered the closure of all
39 educational institutions from March to October 2020 (4) (5). During Malawi's second wave
40 of infections towards the end of 2020 and early 2021 and following an outbreak in a school in
41 Lilongwe where 311 out of 605 students tested positive, schools were again closed for three
42 weeks from 18th January 2021 (5).

43 At the Malawi University of Science and Technology (MUST) in-person classes resumed in
44 March with a phased and cautious blended learning approach. This included online learning
45 for all students and face-to-face classes with only 50% of students returning to campus in two
46 staggered groups. Other measures implemented included enforcement of COVID-19
47 prevention measures such as mask wearing, hand washing and physical distancing. The
48 MUST SARS-CoV-2 testing laboratory was also set up to conduct RT-PCR and rapid antigen
49 testing of all individuals presenting at MUST Clinic with any COVID-19 related symptoms.

50 Despite all these measures residence halls and campus lecture rooms remained susceptible to
51 outbreaks due to the continued movement of students in and out of campus especially to
52 Blantyre, Malawi's second largest city 30 kilometres away where 38% of the average daily
53 national cases for the month of March were located.

54 During the months of April and May, 2021 MUST experienced an outbreak of COVID-19
55 involving 57 confirmed cases in a population of 1152 (~5%) students. In line with Ministry of

56 Health guidelines, students were not sent home but kept on campus and a containment
57 strategy of enhanced testing capacity accompanied by contact tracing and isolation (TTI) of
58 known cases (6,7) was used.

59 Here, we describe the outbreak and the management strategy that enabled the resumption of
60 in-person classes 28 days after identification of the first case. By analysing administrative
61 data from the outbreak, we identify trends and patterns, which emerged from implementation
62 of the response plan.

63 These experiences, lessons and findings may prove useful to other educational institutions
64 and decision-makers in the planning and development of responses to future campus
65 outbreaks especially in the African context where similar challenges may exist.

66 **Materials and methods**

67 ***MUST setting and demographics:*** The Malawi University of Science and
68 Technology is a public university situated at Ndata Estate in Thyolo district in southern
69 Malawi (Figure 1). It is in a rural setting approximately 30 kilometres from Blantyre,
70 Malawi's second largest city.

71 The total campus student population consists of 2530 students enrolled in 20 undergraduate
72 programs. There are 50 students enrolled in 2 postgraduate programs who are not part of the
73 normal campus population as their programs are conducted on a block-release basis. There is
74 limited off campus accommodation available in the immediate community and therefore all
75 undergraduate students are accommodated in student housing on campus.

76 ***Preparation and resumption of in-person classes:*** After having moved completely to
77 online modes of delivery, it was announced that there would be a return to in-person learning
78 commencing in March 2021. In preparation, the MUST COVID-19 Taskforce undertook a
79 series of measures to ensure infection prevention on campus. These included modification of

80 spaces through posting of signage; placement of hand-wash stations at various locations on
81 campus; development of standard operating procedures (SOP's) and plans for transportation,
82 sporting and other activities; modification of the student rules and regulations to reflect
83 COVID prevention measures; establishment of a SARS-CoV-2 testing facility and a testing
84 team; SOP's for referral of students and staff with respiratory and other potentially COVID
85 related symptoms; development of a communication policy and the establishment of an
86 isolation facility.

87 A strategy was agreed to decongest the campus by splitting the students into two groups.

88 Group 1: which comprised first year and final year students (March to June) n = 1100 and

89 Group 2: which had second year and third year students (June to August) n = 1450

90 ***Routine testing specimen collection:*** Individuals presenting at the MUST Clinic with
91 any respiratory symptoms, fever or any other potentially COVID-19 related symptoms were
92 referred to the MUST SARS-CoV-2 Molecular Laboratory for testing. All persons being
93 tested were assisted by a trained professional in completing a case-based reporting form
94 provided by Public Health Institute of Malawi (PHIM). Nasopharyngeal swab specimens
95 were collected by trained personnel and placed in a 3-mL tube of viral transport medium
96 (Mantacc MBT-010, Miraclean Technology, Shenzhen, China) to be used for both antigen
97 testing and RT-PCR testing.

98 ***RT-PCR on nasopharyngeal swab specimens:*** Viral RNA was extracted from 200 ul
99 of viral transport media using QIAmp Viral RNA Mini Kit (Qiagen, Maryland, USA)
100 following manufacturer's protocol. RT-PCR was carried out using the 1-Step RT-PCR
101 Polymerase mix with LightMix® SarbecoV E-gene and Modular SARS-CoV-2 RdRP
102 primer-probe kits (TIB MOLBIOL, Berlin Germany).

103 Specimens were determined to be positive for SARS-CoV-2 when the E gene and RdRP
104 genes were detected with an exponential growth curve and a cycle threshold (Ct) value <31,
105 and negative when these genes could not be detected. The test was considered positive even if
106 one gene was detected. The quality of the nasopharyngeal specimen extracted was
107 determined by analyzing the curve generated with the human *maseP* housekeeping gene.

108 **Mass testing:** Students, academic staff, administrative staff, technical and support
109 staff were requested to present themselves for mass testing at the MUST Clinic. Testing was
110 voluntary and all members were advised through e-mail about the importance of testing in
111 understanding the scale of the outbreak and achieving an effective response that would allow
112 the resumption of normal activities. Nasopharyngeal swabs were collected at MUST by
113 clinical and laboratory staff from MUST and Blantyre District Health Office. Samples were
114 sorted and processed at MUST using the method described above, or were transported to
115 Blantyre DREAM Laboratories and the qRT-PCR assay was performed per the Abbott
116 RealTime SARS-CoV-2 assay EUA product insert.

117 **Contact tracing:** All persons who tested positive for SARS-CoV-2 were notified by
118 phone using contact number entered on the case-based surveillance form. Individuals were
119 asked to provide the names and contact details of their roommate or roommates as well as
120 their 5 closest contacts over the preceding five days. Nasopharyngeal swabs were taken from
121 the contacts within 24 hours or on the same day where possible for RT-PCR. Contact tracing
122 was continued throughout the mass testing exercise.

123 **Isolation and discharge:** Isolation was carried out within 24 hours of obtaining a
124 positive PCR result. Students were escorted to the facility by a team from the Directorate of
125 Student Affairs (DSA) during early evening hours. Meals were provided initially through
126 arrangement for purchase and delivery from service providers close to campus. MUST
127 management then stepped in to provide funding for meals for all isolated students from the

128 10th of the outbreak until the isolation facility was cleared. Students were isolated for a
129 minimum of 10 days if their PCR returned a CT value > 25. Students with CT values ≤ 24
130 were kept in isolation for a minimum of 14 days. Students isolating for 10 days were
131 subjected to a follow-up PCR before release while those isolating for 14 days were given a
132 rapid antigen test and examined by clinical officer if they had experienced symptoms during
133 the second week of isolation. Those that had remained asymptomatic for the duration of their
134 isolation were released without a follow up test after 14 days.

135 ***Sequencing:*** Samples were shipped to the KwaZulu-Natal Research Innovation and
136 Sequencing Platform's (KRISP) laboratory in Durban, South Africa for sequencing. RNA
137 extraction was carried out on the automated Chemagic 360 instrument using the CMG-1049
138 kit (Perkin Elmer, Hamburg, Germany) according to the manufacturer's instructions.
139 Complementary DNA (cDNA) synthesis was performed using random hexamer primers from
140 the SuperScript IV reverse transcriptase synthesis kit (Life Technologies), followed by
141 multiplex PCR according to the nCoV-2019 ARTIC network sequencing protocol
142 (<https://artic.network/ncov-2019>). AmpureXP purification beads (Beckman Coulter, High
143 Wycombe, UK) were used to purify the PCR products in a 1:1 ratio and further quantified on
144 the Qubit 4.0 instrument (Life Technologies Carlsbad, CA) using the Qubit dsDNA High
145 Sensitivity assay according to the manufacturer's instructions.

146 ***Library Preparation and Illumina Sequencing:*** Library preparation was done using
147 the Nextera Flex DNA library preparation kit and Nextera CD indexes (Illumina, San Diego,
148 CA, USA) according to manufacturer's instructions. The libraries were quantified using the
149 Qubit 4.0 instrument (Life Technologies) and the Qubit dsDNA High Sensitivity assay kit.
150 Each sample library was normalized, pooled and denatured. Libraries were sequenced on the
151 Illumina MiSeq platform using a MiSeq Reagent Kit v2 (500 cycles).

152

153 **Sequence analysis:** Sequenced genomes from the outbreak were assembled using Genome
154 Detective 1.132 (8) and mapped to the Wuhan-Hu-1 SARS-CoV-2 reference. The resulting
155 assemblies were cleaned in Geneious. MUST sequences were analysed against a global
156 representative set of sequences from around the world including all Malawian SARS-CoV-2
157 sequences contained within the GISAID sequence repository (date of access 1st July 2021)
158 using the COVID-19 NextStrain build platform (<https://github.com/nextstrain/ncov>).

159 **Results**

160 ***Epidemic Timeline and description of outbreak:*** The outbreak began with two
161 confirmed cases referred from the clinic with COVID related symptoms (Figure 2). Both
162 individuals were requested to isolate at home or transfer to the isolation facility that had been
163 set-up at MUST within 24 hours. Immediate contacts of both cases traced and requested to
164 undergo testing the following day. All classes and cohorts that had contact these two cases
165 were immediately suspended and all lecturers were notified. Targeted testing on day-2
166 yielded nine cases from 42 tests.

167 Having identified 11 cases out of 54 tests (20% positivity rate) in two days of testing it
168 became apparent that there was a significant cluster of infections among students on campus.
169 All in-person learning activities on campus were halted and teaching moved to online modes
170 of delivery. An initial suspension of 21 days was announced, and the situation would be
171 reviewed before resumption of classes.

172 Mass testing for all staff and students was arranged beginning on day 4. Given the limited
173 capacity of the MUST laboratory, priority was given to testing groups (study programs or
174 residences) that had epidemiological links to the cases found thus far. A total of 136 tests
175 were conducted with 10 positive results.

176 On day 5, additional testing capacity was brought on board with the assistance of the Blantyre
177 District Health Office and the Blantyre DREAM Molecular Laboratory. This allowed us to
178 conduct 305 tests on day 5 and 400 tests on the 6. These returned 11 and 24 positive results,
179 respectively. A total of 86 and 94 tests were conducted on day 7 and day 8 and all were
180 negative. No tests were conducted on day 9 and the mass testing exercise was completed.
181 Subsequently, we reverted to testing symptomatic individuals referred from the clinic. Five
182 negative tests were done on day 10. Some referrals and contact tracing on day 11 resulted in
183 4 new cases from 12 tests conducted.

184 There were no more referrals from the clinic for the next 20 days and all tests conducted were
185 follow-up tests of isolated individuals seeking discharge to and a return to their campus
186 accommodation.

187 ***Coverage of staff and students by mass testing:*** The mass testing exercise was open
188 to everyone at MUST and although it was not actively encouraged, community members
189 from surrounding areas were also allowed to test. A total of 1,094 tests were conducted in the
190 month of during the ourbreak.

191 Staff were categorised in two groups, namely academic and support staff as well as
192 outsourced service staff. Outsourced service staff consisted of those in catering services,
193 cleaning services, landscaping services and security services. In total, 161 (40%) staff
194 members out of 404 were tested (Figure 3). Only 6.3% of academic and support staff tested
195 while 87.4% of outsourced service staff tested.

196 A total of 789 tests were conducted among students from a population of 1154 representing
197 68.4% of students (Figure 3). There were 55 positive tests giving a total positivity rate of
198 6.97%. A total of 51 out of the 55 (92.7%) positive cases among students were housed on the
199 main campus where most students reside putting the positivity rate there at 8.04%. This was

200 significantly higher (χ^2 (1, 5.733), $p=0.0166$) than the extension camp which had a positivity
201 rate of 2.58% among its population of 196 students.

202 The testing coverage among students was significantly lower (χ^2 (1, 12.89), $p=0.0003$) at
203 65% on the main campus compared to 74% at the extension camp.

204 There were 146 tests which were unidentifiable as students or staff members. Among these,
205 there were no cases detected.

206 ***Distribution of cases on campus:*** An analysis was done of the location of each
207 individual case in the main campus residences by their room allocation (figure 4). In one
208 residence 24% of occupants tested positive while all other residences had a positivity rate
209 below 5%. In each case identified in the residences the roommate was treated as a contact and
210 was encouraged to present for testing.

211 ***Testing coverage among students:*** Some trends were evident in the willingness of
212 different groups of students to test as evidenced by the percentages of those who submitted
213 biological samples. Taken overall there was no significant gender difference in positivity rate
214 and testing coverage among students. Male students had a positivity rate of 7.7% and
215 achieved 65.12% testing coverage while female students had a positivity rate of 6.15% and
216 achieved 66.78% testing coverage. However, there were no female students in the extension
217 camp and therefore the gender differences were re-examined only among students in the main
218 campus. No significant differences were observed in test positivity however male students
219 did have a significantly reduced level of testing coverage of 61.0% (χ^2 (1, 6.865),
220 $p=0.00879$).

221 There were significant differences observed in test positivity and testing coverage between
222 the first year ($n=592$) and final year students ($n=560$) (Year 4 or year 5 students depending on
223 the program of study). There was a lower test positivity of 3.02% among first year students

224 compared to 14.04% positivity rate among final year students (χ^2 (1, 86.575), $p < 0.00001$).

225 First year students had higher testing coverage of 78.2% compared to 52.14% among final

226 year students (χ^2 (1, 32.18), $p < 0.00001$).

227 The same trend was observed on detailed analysis residences which had mixed populations of
228 freshmen and final year students. In one case, the combined testing rate was 58.2%.

229 However, when disaggregated, testing coverage for first year students was 69.4% while that

230 for final year students was only 39.5% of students tested (χ^2 (1, 33.071), $p < 0.00001$). In a

231 second case, the combined testing coverage was 66.4% but was disaggregated as 80.3% of

232 first year students and 52.5% of final year students tested (χ^2 (1, 11.8197), $p = 0.000586$). The

233 highest coverage of 85% was achieved in a residence which was all female and first year.

234 ***Virus sequencing:*** A total of 38 samples were successfully sequenced. All were

235 found to be Nextstrain clade 501.Y.V2 that corresponds to Pango lineage B.1.351 or WHO

236 label Beta variant of concern (VOC). Phylogenetic analysis of the sequenced specimens from

237 MUST against other Malawian and global sequences revealed that there were multiple

238 introductions of the virus on the MUST campus, including 4 that lead to the April outbreak

239 (Fig 5A) ([https://nextstrain.org/groups/ngs-sa/COVID19-MW-MUST-](https://nextstrain.org/groups/ngs-sa/COVID19-MW-MUST-2021.07.07?c=outbreak&f_division=Malawi)

240 [2021.07.07?c=outbreak&f_division=Malawi](https://nextstrain.org/groups/ngs-sa/COVID19-MW-MUST-2021.07.07?c=outbreak&f_division=Malawi)). While the sequences from January and

241 February were sampled from COVID positive staff present on campus in the absence of

242 students and were assigned to the Beta variant, it is clear from phylogenetic analysis that

243 none of these were the source of the student outbreak in April (Fig 5B). Most of the

244 sequences from the April outbreak belong to two distinct transmission clusters within the

245 Beta clade, the largest one containing at least 25 staff/students from MUST (Fig 5D) and the

246 other one containing at least 6 individuals (Fig 5C). Two cases of the April outbreak did not

247 go beyond a single case.

248

249 ***Resumption of in-person classes:*** On day 31, after having 18 days without recording
250 a new case, in-person classes were resumed. By day 33 all individuals who had been kept in
251 the isolation facilities had recovered and been discharged.

252

253 **Discussion**

254 Societies and institutions are still grappling with how to effectively respond to and manage
255 successive waves of highly disruptive COVID infections and outbreaks. The semi-contained
256 university setting provides a level of administrative control that is often unavailable in the
257 general population. A combination of vaccination and non-pharmaceutical interventions need
258 to be deployed in an effective response. However, Malawi remains one of the least vaccinated
259 countries and Africa the least vaccinated continent highlighting the importance of non-
260 pharmaceutical interventions. The currently used TTI strategies are likely to remain a critical
261 part of outbreak management and are important for making students and staff feel safe and
262 enable the rapid return to normal activities. These strategies have to overcome several
263 challenges to be effectively implemented. These include the presence of asymptomatic yet
264 infectious carriers (9,10), opposition and reluctance to testing (11) and capacity limits of
265 testing as well as contact tracing (6).

266 The experience at MUST shows that challenges exist in convincing all staff and students to
267 present themselves for testing. Turnout was especially low for academic staff, and this was
268 likely due to the fact that almost all of them reside off campus in Blantyre or Zomba several
269 kilometres away. Support staff are mainly resident in the surrounding communities and
270 showed a greater willingness to test accompanied with a very low incidence. Related to this
271 was the unexpectedly large turnout of community members (n=146) who took advantage of
272 the mass testing exercise to know their COVID-19 status and the complete absence of cases

273 among this group. This trend is reflective of the reported lower seroprevalence in rural
274 Malawians seen in the second wave. However, this pattern is beginning to shift with studies
275 reporting higher seroprevalence among rural communities in the more recent delta driven
276 wave (M Crampin, personal communication, July 13, 2021). This further highlights the
277 importance of controlling on-campus transmission as a means of protecting the adjacent
278 community which often has less access to testing and care than urban communities do. Our
279 findings also suggest that the community surrounding the campus would benefit from and
280 perhaps welcome access to COVID testing through MUST.

281 Among students, gender differences were observed in the percentage of male and female
282 students presenting for testing with female students being more cooperative with the mass
283 testing exercise. The difference observed in this study is reflective of similar trends seen in
284 several multicultural studies of university students' health seeking behaviour and outcomes
285 (12) and even health literacy (13). Research conducted in Malawi shows that males spend
286 almost no time seeking healthcare (14) and that this is associated with feelings of diminished
287 masculinity (15,16). Health interventions will likely be more effective if they give particular
288 focus and attention to male students (12).

289 An important finding in this study was that senior students (year 4 and 5) had higher COVID-
290 19 incidence but fewer of them presented for testing compared to freshmen. The reasons for
291 senior students being less cooperative and compliant to preventive measures is an important
292 area of research that needs to be explored to better inform interventions at universities and
293 schools. Refusal to test presents a danger to members of any community particularly in the
294 case of SARS-CoV-2 which is a serious communicable disease. Ensuring that the importance
295 of testing and the consequences of refusal are well articulated and understood by all is an
296 important part of any strategy. Lessons can be drawn from other diseases and continued

297 development of the ethical and legal implications of refusal to test will remain an important
298 public health policy issue.

299 Further studies are required to better understand other barriers to testing. Anecdotally, several
300 students expressed that the use of nasopharyngeal swabs is a major discouraging factor and
301 staff and students welcomed testing with anterior nasal swabs where these were available.
302 More work is also required to understand the experience and psychosocial impact of being
303 moved to isolation facilities. Provision of food to students in isolation for example, was
304 viewed as a strong incentive by some students.

305 Response to a campus outbreak requires effective planning, commitment of resources and
306 focussed implementation and coordination between campus health services, laboratory
307 services, student affairs directorate and the registry. It is important also that universities work
308 closely with local health authorities to effectively protect the local communities and report
309 case numbers and surveillance data to the national response coordinators. This study reports
310 an outbreak driven by multiple introductions of the beta variant. As more transmissible
311 variants such a delta emerge and drive the next waves of infection, campus response teams
312 will need to act in a more coordinated, decisive and aggressive manner to control any future
313 outbreaks and minimise the disruptive effect of COVID.

314 **Acknowledgements**

315 We are grateful to Seeding Labs (Boston, MA, USA) for their kind donation of equipment
316 and to the Ministry of Health in Malawi for facilitating the establishment of the COVID
317 Molecular Testing Laboratory at MUST and for support with training, reagents and data
318 management. We appreciate the technical assistance of Watipaso Kasambara and her team
319 especially the late Aisha Senga for her assistance. We are thankful to Dr Kondwani Jambo
320 and Dr Sara Suliman for the critical discussion and sharing of ideas. We appreciate the

321 MUST COVID Taskforce and the assistance of Blantyre and Thyolo District Health Offices
322 in the management of the response. Funding was provided by MUST management. All
323 authors had full access to all data in the study, and the corresponding author had final
324 responsibility for the decision to submit for publication. GB led the study team,
325 conceptualised and drafted the manuscript. AM provided overall guidance and helped
326 conceptualised the study. PC and TN provided critical feedback in manuscript writing. YK,
327 JM and MK conducted laboratory assays and data processing. PK developed the tables and
328 figures. MM and YN led the sample and data collection. MM, CM, SK and MS managed
329 isolation and management of students. JBB and TN facilitated establishment of testing
330 capacity and provided feedback on the manuscript. RL provided mass testing capacity. BM
331 facilitated sequencing with the UKZN team. JG, SP, YN, UR, JES, HT, EW and TdO
332 conducted virus sequencing and developed figures. AM

333

334 **Author Bio**

335 Gama Bandawe (PhD) is a medical virologist and is currently a senior lecturer and head of
336 the Department of Biological Sciences in the Academy of Medical Sciences at the Malawi
337 University of Science and Technology (MUST). His research interests include immune
338 responses to HIV and HIV diversity as well as emerging virus infections and public health in
339 Malawi.

340

341 **References**

342 1. Lu H, Weintz C, Pace J, Indana D, Linka K, Kuhl E. Are college campuses
343 superspreaders? A data-driven modeling study. *Comput Methods Biomech Biomed*
344 *Engin* [Internet]. 2020;0(0):1–11. Available from:

- 345 <https://doi.org/10.1080/10255842.2020.1869221>
- 346 2. Martin N, Schooley RT, De Gruttola V. Modelling testing frequencies required for
347 early detection of a SARS-CoV-2 outbreak on a university campus. medRxiv Prepr.
348 2020;
- 349 3. Fox MD, Bailey DC, Seamon MD, Miranda ML. Response to a COVID-19 Outbreak
350 on a University Campus — Indiana, August 2020. MMWR Morb Mortal Wkly Rep.
351 2021;70(4):118–22.
- 352 4. UNESCO. COVID 19 and school closures one year of education. 2021; Available
353 from: [https://data.unicef.org/resources/one-year-of-covid-19-and-school-](https://data.unicef.org/resources/one-year-of-covid-19-and-school-closures/#:~:text=Children cannot afford another year of school closures.,at pre-primary%2C primary%2C lower and upper secondary levels.)
354 [closures/#:~:text=Children cannot afford another year of school closures.,at pre-](https://data.unicef.org/resources/one-year-of-covid-19-and-school-closures/#:~:text=Children cannot afford another year of school closures.,at pre-primary%2C primary%2C lower and upper secondary levels.)
355 [primary%2C primary%2C lower and upper secondary levels.](https://data.unicef.org/resources/one-year-of-covid-19-and-school-closures/#:~:text=Children cannot afford another year of school closures.,at pre-primary%2C primary%2C lower and upper secondary levels.)
- 356 5. HORN MB. Education, disrupted. MIT Sloan Manag Rev. 2020;61(3):13–6.
- 357 6. Contreras S, Dehning J, Loidolt M, Zierenberg J, Spitzner FP, Urrea-Quintero JH, et
358 al. The challenges of containing SARS-CoV-2 via test-trace-and-isolate. Nat Commun
359 [Internet]. 2021;12(1):1–13. Available from: [http://dx.doi.org/10.1038/s41467-020-](http://dx.doi.org/10.1038/s41467-020-20699-8)
360 [20699-8](http://dx.doi.org/10.1038/s41467-020-20699-8)
- 361 7. Kucharski AJ, Klepac P, Conlan AJK, Kissler SM, Tang ML, Fry H, et al.
362 Effectiveness of isolation, testing, contact tracing, and physical distancing on reducing
363 transmission of SARS-CoV-2 in different settings: a mathematical modelling study.
364 Lancet Infect Dis. 2020;20(10):1151–60.
- 365 8. Cleemput S, Dumon W, Fonseca V, Abdool Karim W, Giovanetti M, Alcantara LC, et
366 al. Genome Detective Coronavirus Typing Tool for rapid identification and
367 characterization of novel coronavirus genomes. Bioinformatics [Internet]. 2020 Jun

- 368 1;36(11):3552–5. Available from: <https://doi.org/10.1093/bioinformatics/btaa145>
- 369 9. Rothe C, Schunk M, Sothmann P, Bretzel G, Froeschl G, Wallrauch C, et al.
370 Transmission of 2019-NCOV infection from an asymptomatic contact in Germany. N
371 Engl J Med. 2020;382(10):970–1.
- 372 10. Lai CC, Liu YH, Wang CY, Wang YH, Hsueh SC, Yen MY, et al. Asymptomatic
373 carrier state, acute respiratory disease, and pneumonia due to severe acute respiratory
374 syndrome coronavirus 2 (SARS-CoV-2): Facts and myths. J Microbiol Immunol Infect
375 [Internet]. 2020;53(3):404–12. Available from:
376 <https://doi.org/10.1016/j.jmii.2020.02.012>
- 377 11. McDermott JH, Newman WG. Refusal of viral testing during the SARS-CoV-2
378 pandemic. Clin Med J R Coll Physicians London. 2020;20(5):E163–4.
- 379 12. Skromanis S, Cooling N, Rodgers B, Purton T, Fan F, Bridgman H, et al. Health and
380 well-being of international university students, and comparison with domestic
381 students, in Tasmania, Australia. Int J Environ Res Public Health. 2018;15(6).
- 382 13. Zakar R, Iqbal S, Zakar MZ, Fischer F. COVID-19 and Health Information Seeking
383 Behavior: Digital Health Literacy Survey amongst University Students in Pakistan. Int
384 J Environ Res Public Health [Internet]. 2021 Apr 11;18(8):4009. Available from:
385 <https://pubmed.ncbi.nlm.nih.gov/33920404>
- 386 14. Yeatman S, Chamberlin S, Dovel K. Women’s (health) work: A population-based,
387 cross-sectional study of gender differences in time spent seeking health care in
388 Malawi. PLoS One. 2018;13(12):3–4.
- 389 15. Chikovore J, Hart G, Kumwenda M, Chipungu GA, Desmond N, Corbett L. Control,
390 struggle, and emergent masculinities: a qualitative study of men’s care-seeking

391 determinants for chronic cough and tuberculosis symptoms in Blantyre, Malawi. BMC
392 Public Health. 2014 Oct;14:1053.

393 16. Chikovore J, Hart G, Kumwenda M, Chipungu G, Desmond N, Corbett EL. TB and
394 HIV stigma compounded by threatened masculinity: implications for TB health-care
395 seeking in Malawi. Int J Tuberc lung Dis Off J Int Union against Tuberc Lung Dis.
396 2017 Nov;21(11):26–33.

397

398

399 Table 1A: Summary statistics for PCR testing of MUST Staff during the month of April
400 2021.

STAFF SUMMARY TABLE

Variable	TOTAL	PCR negative	PCR positive	Not Tested
Sex				
Female	136	60	1	76
Male	268	105	1	163
Population				
Academic and Support Staff	235	13	0	222
Outsourced Service Staff	169	144	2	21
Clinical status				
Asymptomatic	152	150	2	
Symptomatic	15	15	0	

401

402 Table 1B: Summary statistics PCR testing of students at MUST during the month of April
403 2021.

STUDENT SUMMARY TABLE

Variable	TOTAL	PCR negative	PCR positive	Not Tested
Sex				
Female	292	183	12	97
Male	860	517	43	300
Population				
First Year Students	592	449	14	129
Final Year Students	560	251	41	268
Clinical status				
Asymptomatic	669	637	32	
Symptomatic	86	63	23	

404

405 **Figures**

406

407 Figure 1: Map of the geographical location of MUST (A) showing the location of Malawi in Africa
408 and the location of MUST in Thyolo district in southern Malawi. Also shown is a detailed campus
409 map (B) showing the main campus and halls of residence (H1 to H8) at the top of the picture as well
410 as the extension residences at the bottom right hand corner.

411

412

413 Figure 2: Timeline of cases at MUST during the months of April and May 2021. Dates are
414 placed along the bottom axis with a 17 day gap between the 17th April and the 3rd May where
415 no positive test result was obtained. Positive test results shown in red and negative tests
416 shown in green. The numbers of tests are indicated on or close to each relevant bar. The
417 suspension of classes on the 8th of April and resumption of classes on the 5th of May are
418 indicated as are the 4 days of the campus-wide mass testing exercise on the 10th, 11th, 12th and
419 13th of April.

420

421 Figure 3: Pie charts illustrating summaries of cases among staff and students from Table 1:
422 Red sections indicate positive cases, blue sections indicate negative tests and grey sections
423 indicate untested individuals. Numbers of positive cases are indicated in the respective
424 sections. Staff are grouped into two; academic and support staff as well as outsourced service
425 staff. Students are grouped into those residing on the main campus and those residing in the
426 extension campus.

427

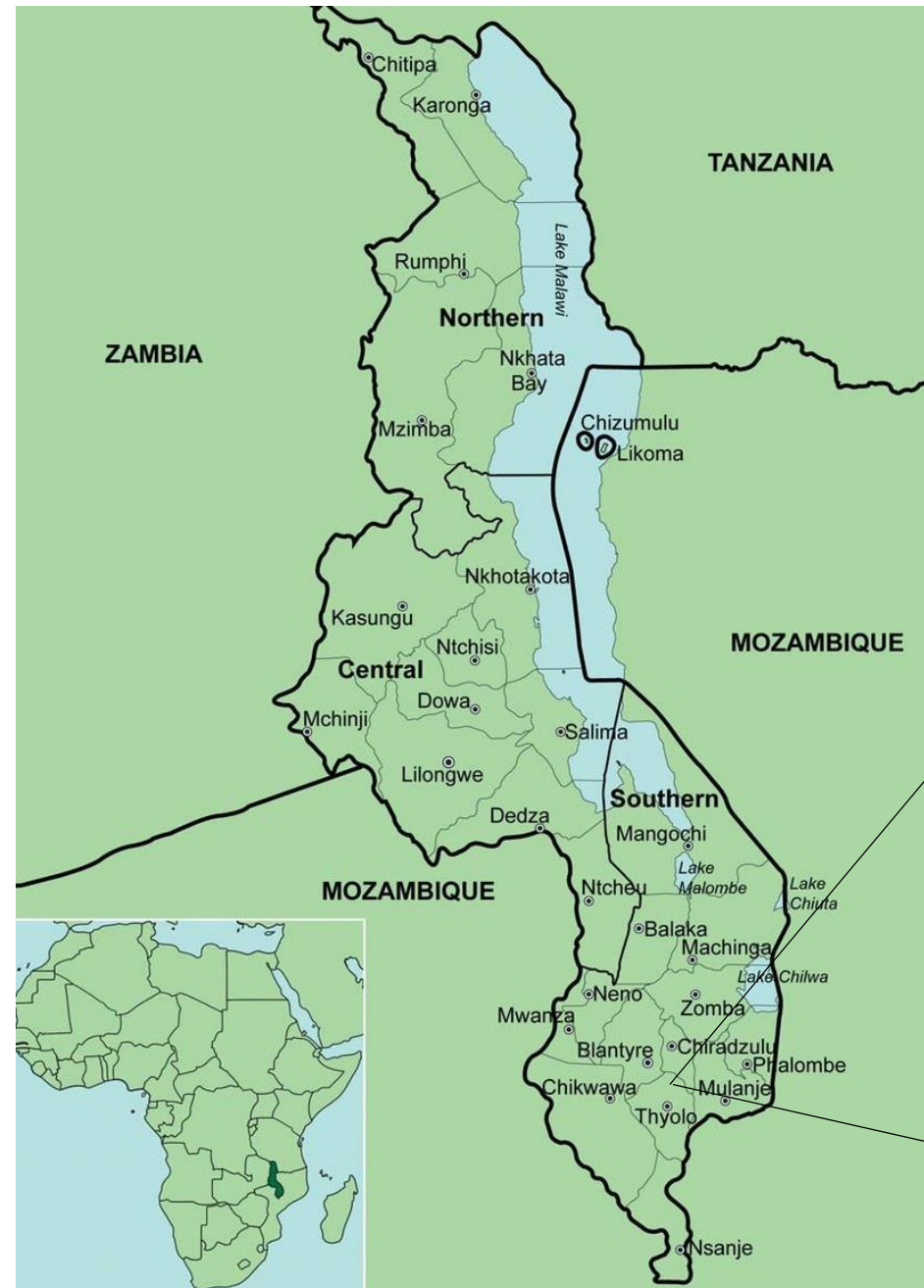
428 Figure 4: Graphical display of distribution of cases in halls of residence on the main campus
429 accompanied by pie charts showing percentages of infected in residences. The residences are
430 displayed in order of highest incidence to lowest (and therefore randomised). Positive cases

431 are indicated in red, those testing negative are in blue while those that did not get tested are
432 shown in grey.

433

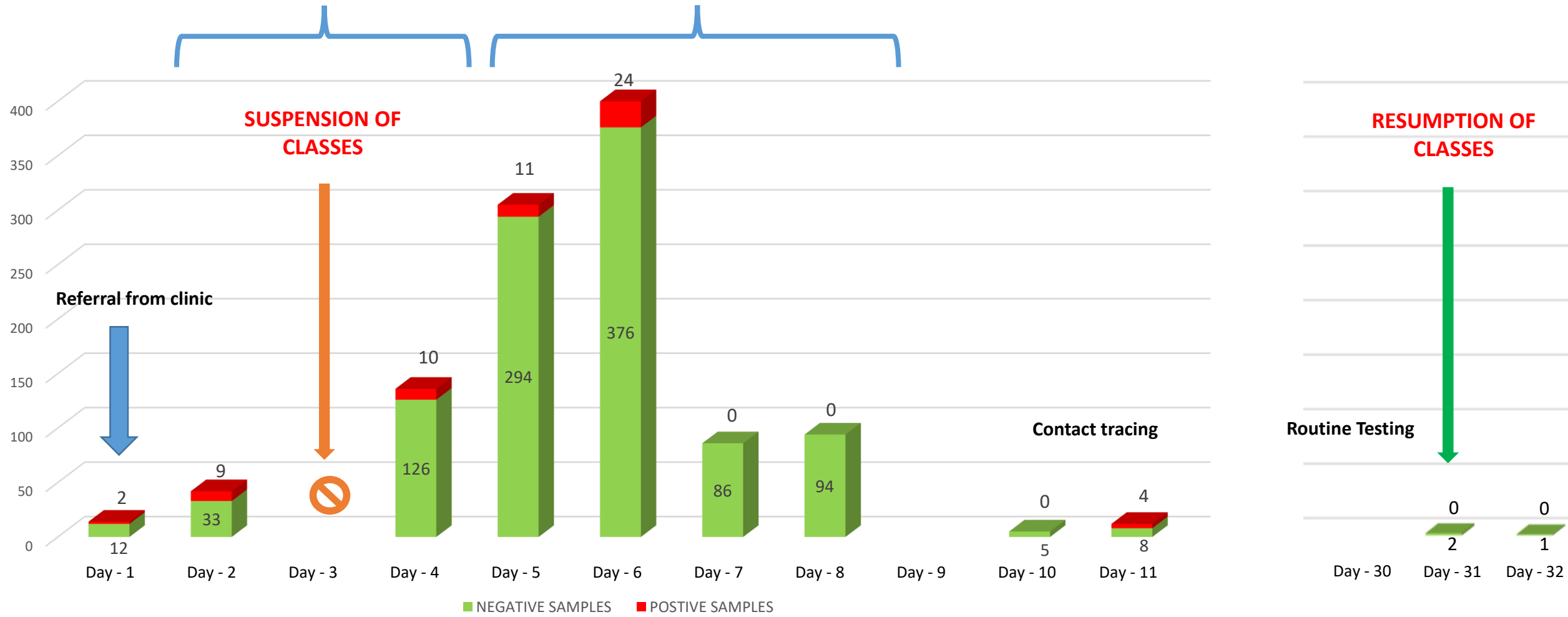
434 Figure 5: Phylogenetic analysis of the MUST outbreak. A) Time-scaled Maximum-
435 Likelihood (ML) tree containing 336 Malawian sequences publicly available on GISAID, 38
436 of which were sampled from MUST, along with a representative set of 4648 other global
437 sequences. The Beta/B.1.351 clade is annotated in orange while other clades are annotated in
438 grey. Malawian genomes are indicated with tip points matching the clade annotation and
439 MUST sequences are annotated with other distinct colours depending on the time of sampling
440 (off-white, yellow, brown). B) Zoomed-in view of the Beta clade showing multiple
441 introductions of the virus into the MUST campus, with two large transmission clusters from
442 the April outbreak indicated. C) Transmission cluster containing 6 specimens from MUST.
443 D) Transmission clusters containing 25 specimens from MUST and one other Malawian
444 genome.

445

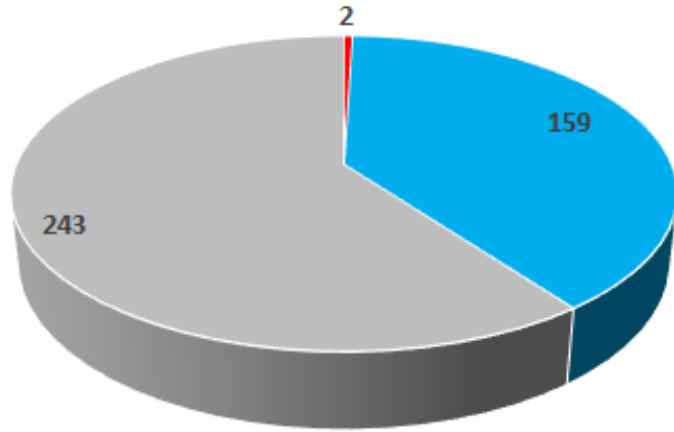


TARGETED TESTING

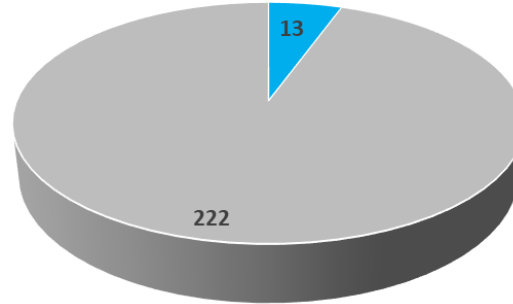
CAMPUS WIDE MASS TESTING



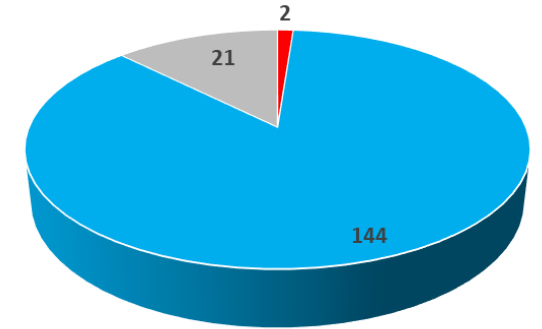
ALL STAFF



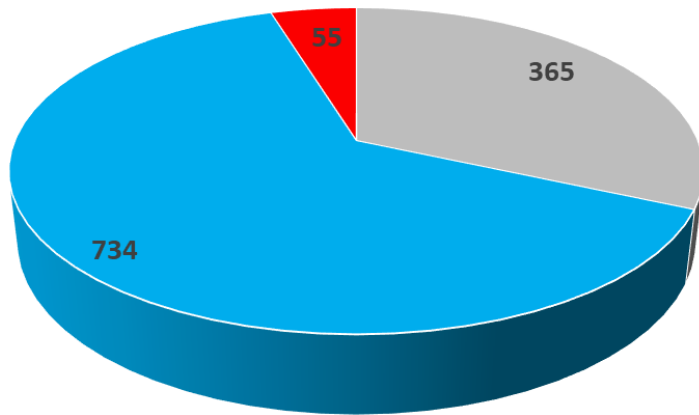
ACADEMIC AND SUPPORT STAFF



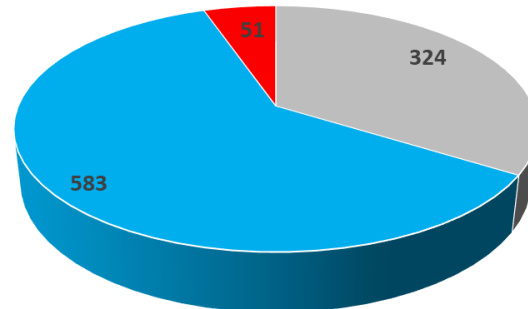
OUTSOURCED SERVICE STAFF



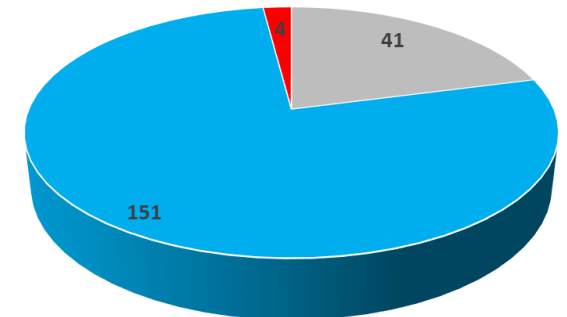
TOTAL CAMPUS STUDENT POPULATION



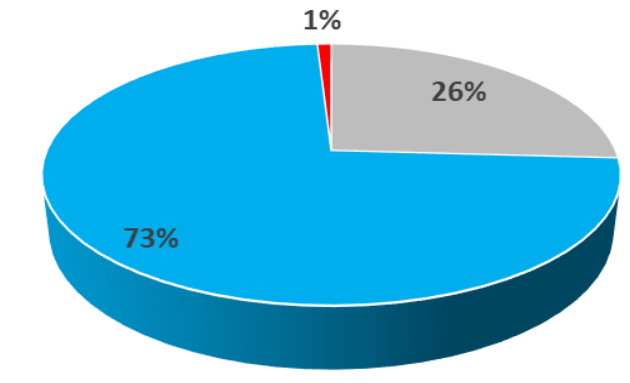
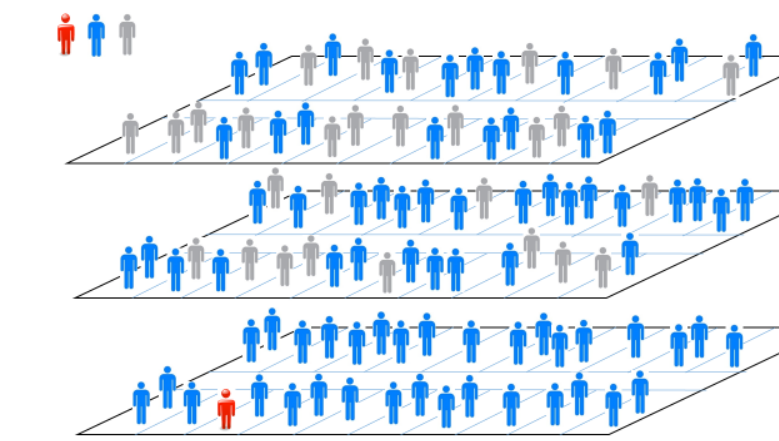
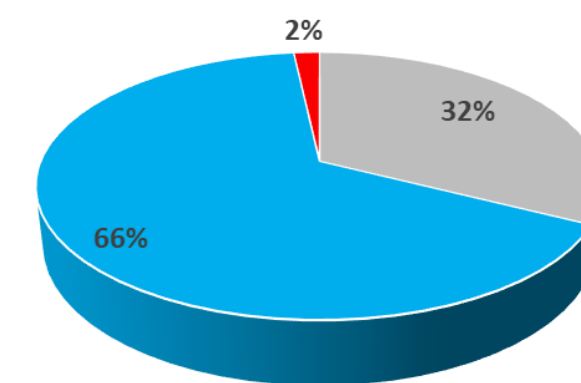
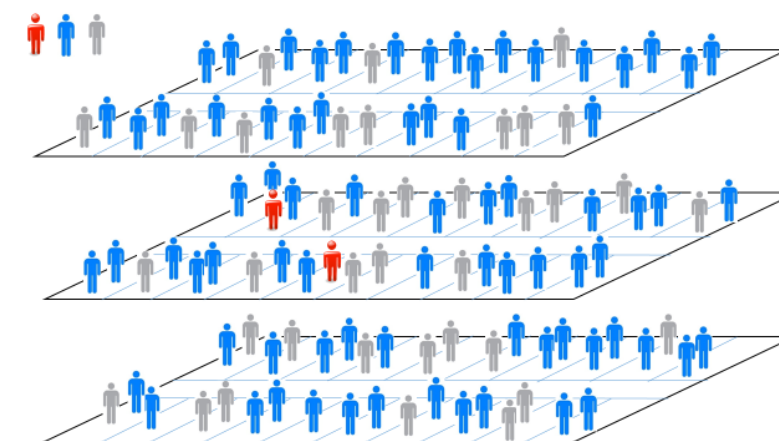
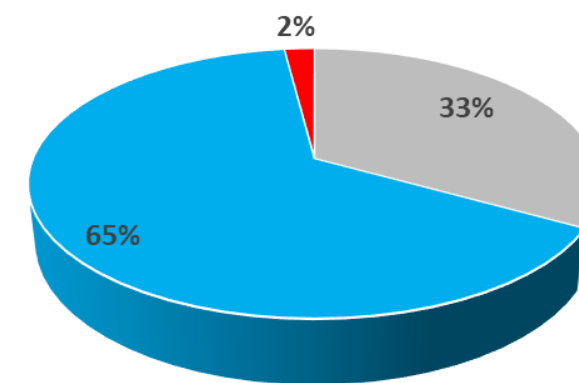
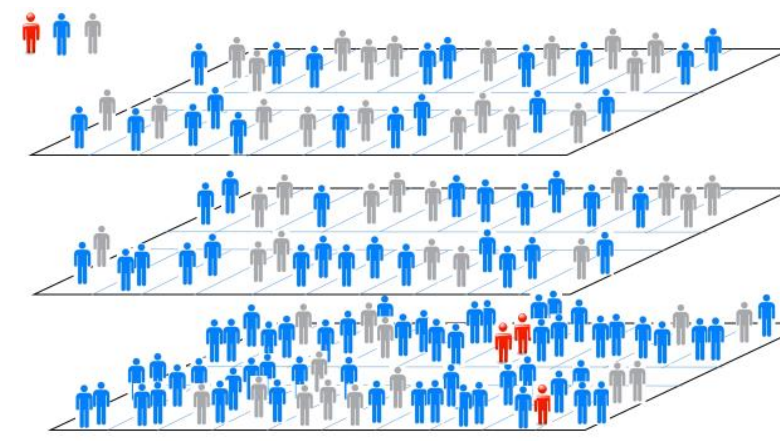
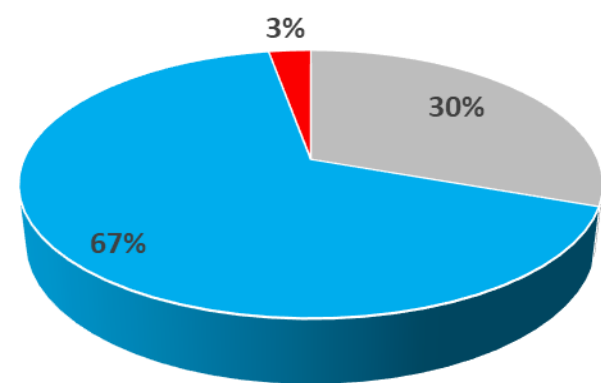
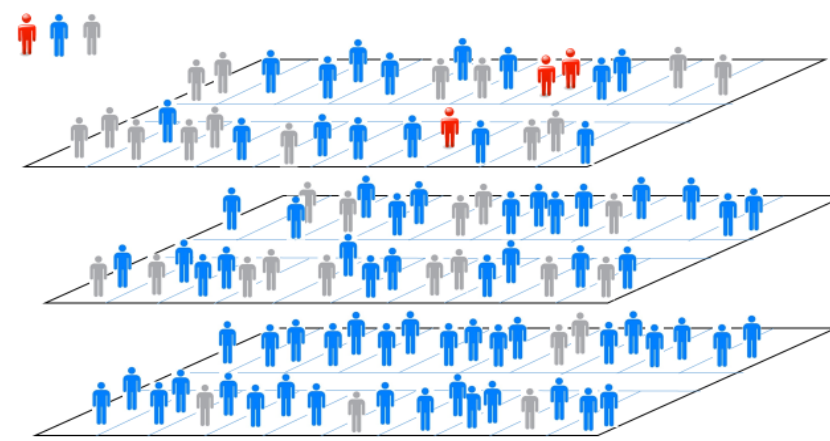
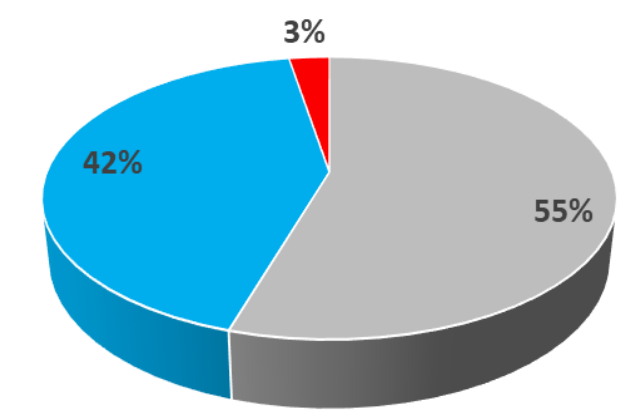
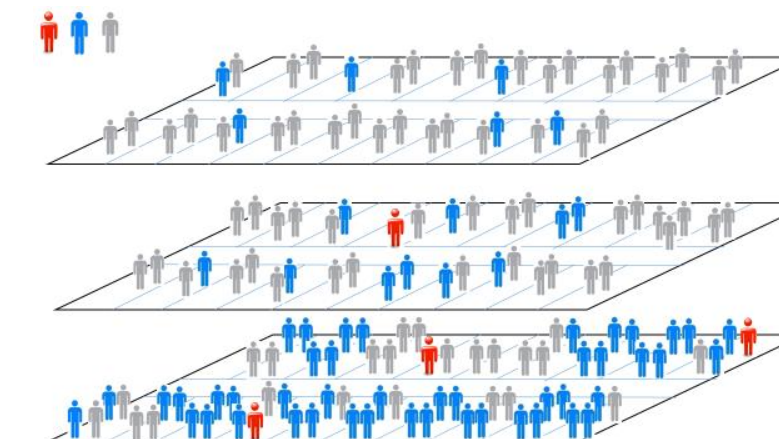
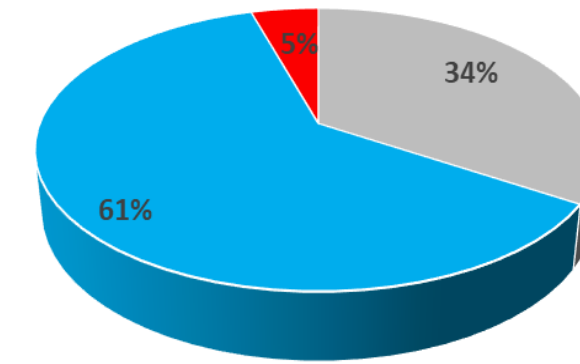
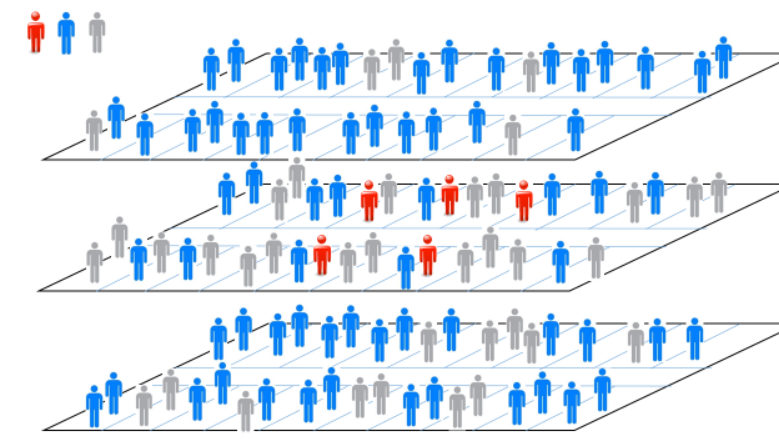
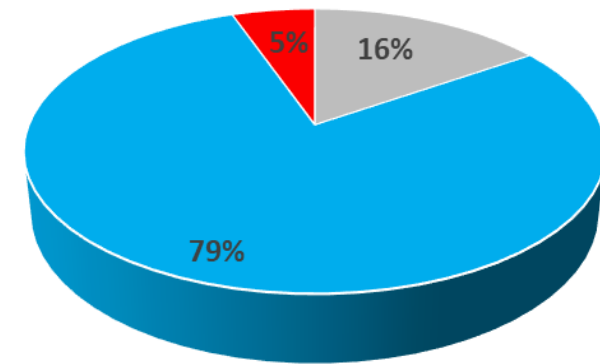
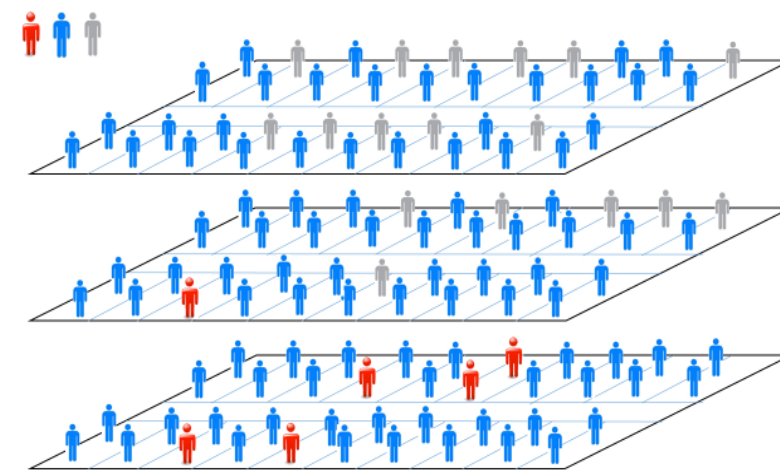
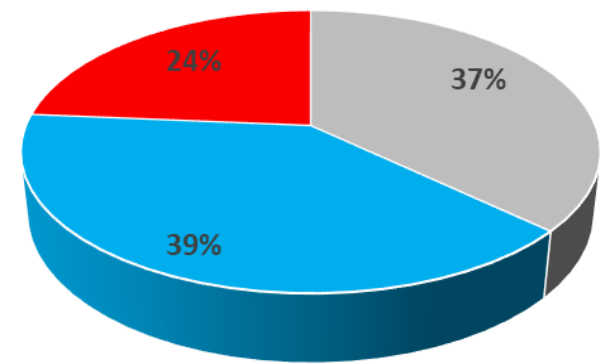
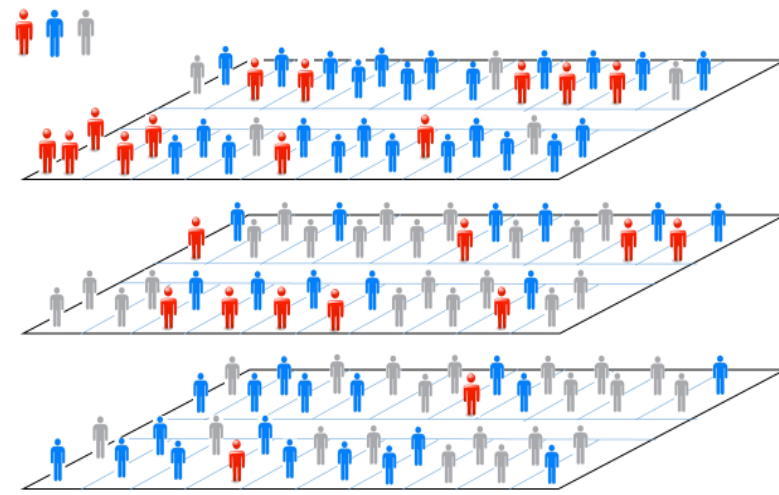
MAIN CAMPUS RESIDENCES




EXTENSION RESIDENCES




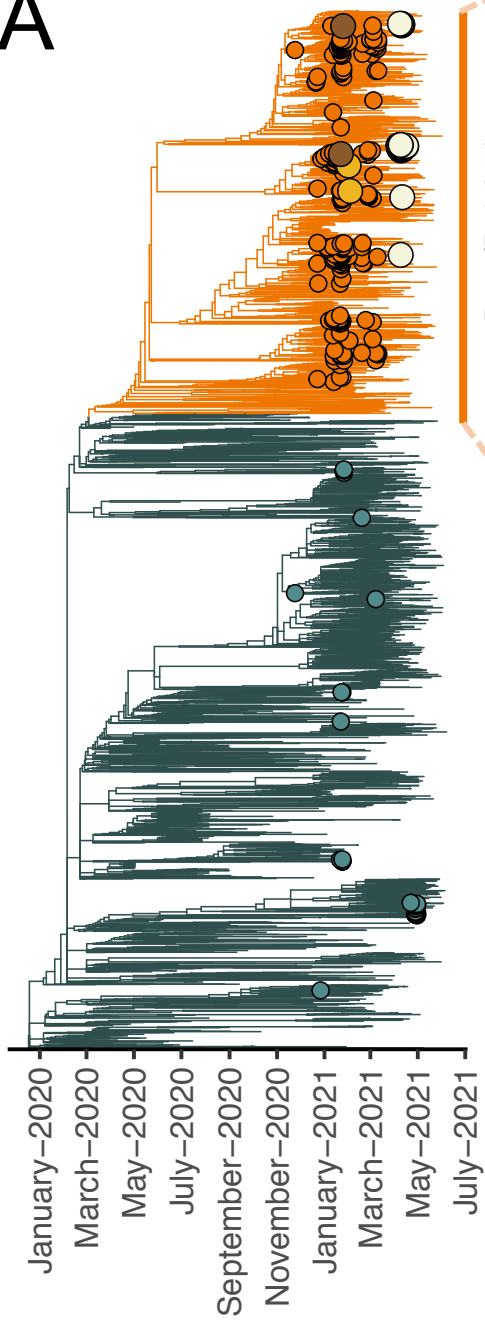
It is made available under a [CC-BY-ND 4.0 International license](https://creativecommons.org/licenses/by-nd/4.0/).



 Tested Positive

 Tested Negative

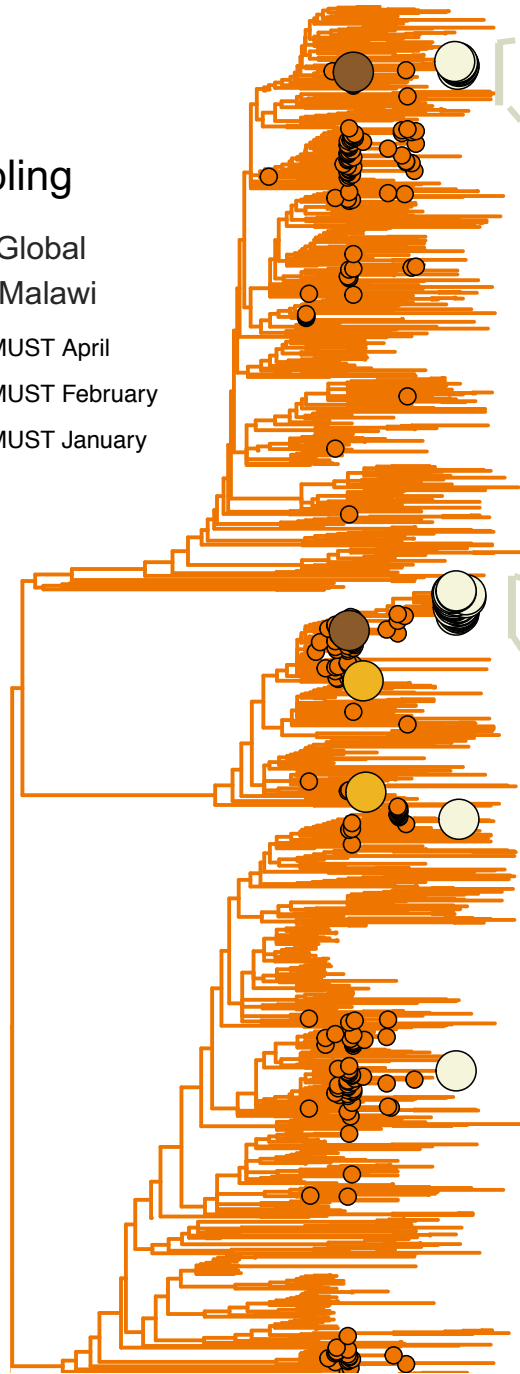
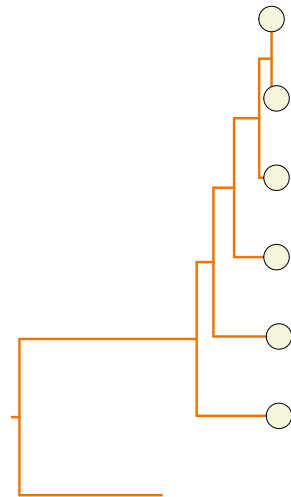
 Did Not Test

A

Beta/B.1.351

B**Sampling**

- Global
- Malawi
- MUST April
- MUST February
- MUST January

**C****D**