

# Reinfection with SARS-CoV-2: outcome, risk factors and vaccine efficacy in a Scottish cohort

Paul M McKeigue<sup>a,e,\*</sup>, David A McAllister<sup>b,e</sup>, Chris Robertson<sup>c,e</sup>, Diane Stockton<sup>e</sup>, Helen M Colhoun<sup>d,e</sup>, for the PHS COVID-19 Epidemiology and Research Cell<sup>e</sup>

<sup>a</sup>Usher Institute, College of Medicine and Veterinary Medicine, University of Edinburgh, Teviot Place, Edinburgh EH8 9AG, Scotland.

<sup>b</sup>Institute of Health and Wellbeing, University of Glasgow, 1 Lilybank Gardens, Glasgow G12 8RZ.

<sup>c</sup>Department of Mathematics and Statistics, University of Strathclyde, 16 Richmond Street, Glasgow G1 1XQ.

<sup>d</sup>Institute of Genetics and Cancer, College of Medicine and Veterinary Medicine, University of Edinburgh, Western General Hospital Campus, Crewe Road, Edinburgh EH4 2XUC, Scotland.

<sup>e</sup>Public Health Scotland, Meridian Court, 5 Cadogan Street, Glasgow G2 6QE

---

---

## Summary

**Background** – The objective of this study was to investigate how protection against COVID-19 conferred by previous infection is modified by vaccination.

**Methods** – In a cohort of all 152655 individuals in Scotland alive at 90 days after a positive test for SARS-CoV-2 (confirmed by cycle threshold < 30, or two tests) followed till 22 September 2021, rate ratios for reinfection were estimated with calendar time or tests as timescale.

**Findings** – Rates of detected and hospitalised reinfection with COVID-19 while unvaccinated were respectively 6.8 (95% CI 6.4 to 7.2) and 0.18 (95% CI 0.12 to 0.25) per 1000 person-months. These rates were respectively 68% and 74% lower than in a matched cohort of individuals who had not previously tested positive. Efficacy of two doses of vaccine in those with previous infection was estimated as as 84% (95 percent CI 81% to 86%) against detected reinfection and 71% (95 percent CI 29% to 88%) against hospitalised or fatal reinfection. The rate of detected reinfection after two doses of vaccine was 1.35 (95% CI 1.02 to 1.78) times higher in those vaccinated before first infection than in those unvaccinated at first infection.

**Interpretation** – The combination of natural infection and vaccination provides maximal protection against new infection with SARS-CoV-2: prior vaccination does not impair this protection.

**Funding** - No specific funding was received for this work.

---

\*Corresponding author

Email address: [paul.mckeigue@ed.ac.uk](mailto:paul.mckeigue@ed.ac.uk) (Paul M McKeigue)

## 28 **Research in context**

### *Evidence before this study*

In a recent systematic review of cohort studies reported up to July 2021, the average reduction in COVID-19 infection rates in those with previous infection compared with those without evidence of previous infection was 90%. There is little information about the protective effect of previous infection against severe COVID-19, or about how the protective effects of previous infection against reinfection and severe disease are modified by vaccination.

### *What this paper adds*

In unvaccinated individuals the protection against hospitalised COVID-19 conferred by previous infection is similar to that induced by vaccination. In those with previous infection, vaccination reduces the rates of reinfection and hospitalised COVID-19 by about 70%.

### *Implications of all the available evidence*

The combination of natural infection and vaccination provides maximal protection against COVID-19: prior vaccination does not seriously impair this protection.

29

## 30 **Introduction**

31 Although cohort studies have shown that previous SARS-Cov-2 infection confers protection against reinfection  
32 [1], few studies have examined how this protection is modified by vaccination before or after first infection. or by  
33 the emergence of new variants.

34 In the UK and most other countries those with evidence of previous SARS-CoV-2 infection are included  
35 in programmes for vaccination against COVID-19 and are not exempt from mandatory vaccine certification  
36 where this is required. This policy has been questioned as an unnecessary use of scarce vaccines, or as having an  
37 unfavourable risk-benefit ratio because adverse reactions to vaccine have been reported to be more common in  
38 the those with previous infection [2]. The evidence base for these policies depends on comparisons of rates of  
39 infection and severe disease between those with and without evidence of previous SARS-Cov-2 infection, and on  
40 estimates of the efficacy of vaccination against reinfection. The objective of this study was to investigate how the  
41 protective effect of previous infection against reinfection and against hospitalisation with COVID-19 is modified  
42 by vaccination.

## 43 **Methods**

### *Construction of cohort at risk of reinfection*

45 CDC criteria for suspected reinfection are based on detection of SARS-CoV-2 RNA at least 90 days after  
46 the first detection of SARS-CoV-2 RNA, with restriction to cycle threshold (Ct) less than 33 where available  
47 [3]. All positive nucleic acid tests for SARS-CoV-2 in Scotland since 1 March 2020 were identified from the

48 Electronic Communication of Surveillance in Scotland database (ECOSS). This database captures all tests in  
49 Pillar 1 (NHS laboratories testing those with a clinical need and workers in health or social care) and Pillar  
50 2 (Lighthouse laboratories testing the wider population from September 2020 onwards). Only the Lighthouse  
51 laboratories report Ct values. To exclude possible false-positives, definite first infection was defined as a positive  
52 test with  $Ct < 30$  for both N and ORF genes, or a second positive test within fourteen days of the first.

53 Entry date to the cohort at risk of reinfection was 90 days after first testing positive. Exit date was the  
54 earliest of date of reinfection (defined as any positive test after entry date), date of death, or end of follow-up  
55 period (22 September 2021).

#### 56 *Construction of comparison cohort*

57 To compare reinfection rates with first infection rates, we constructed a comparison cohort of individuals  
58 who had not previously tested positive for SARS-CoV-2. As all test-positive cases in Scotland had been  
59 sampled in the REACT-SCOT case-control study [4], for each individual in the cohort at risk of reinfection up to  
60 ten controls were available who were sampled from the general population, matched for age, sex and general  
61 practice, alive on the day that the case first tested positive, and had not tested positive by that date. As with  
62 the cohort at risk of reinfection, this comparison cohort was restricted to those who were still under observation  
63 (without having tested positive) at 90 days from the date that they were first sampled as controls. The exit date  
64 for this cohort was the earliest of date of first positive test, date of death or end of follow-up period. Those with  
65 a definite positive test who were still under observation 90 days later entered the cohort at risk of reinfection.

#### 66 *Linkage to health records and occupational databases.*

67 Using the Common Healthcare Identifier (CHI) held on all Scottish health records these individuals were  
68 linked to the population register, the national vaccination database, registers of teachers and health care workers,  
69 the list of those designated as clinically extremely vulnerable (eligible for shielding), the ECOSS database of  
70 test results, a database of hospitalisations (RAPID) that is updated daily, dispensed prescriptions in primary  
71 care and death registrations as described elsewhere [4–7]. As described elsewhere individuals were classified into  
72 three categories of clinical risk: no risk condition, designated moderate risk condition, and clinically extremely  
73 vulnerable [6].

74 Fatal outcome was defined as death within 28 days of testing positive or any death certified with COVID-19 as  
75 underlying cause. Hospitalisation with COVID-19 was defined as any admission within 14 days of testing positive  
76 or any positive test while in hospital. This standard definition does not distinguish those hospitalised with a  
77 primary diagnosis of COVID-19 from those hospitalised for other reasons who test positive on admission. To  
78 obtain a lower bound on the proportion of those hospitalised with but not because of COVID-19, we used Scottish  
79 Morbidity Record (SMR01) data to classify the specialty under which hospitalised cases were admitted (first  
80 episode in a continuous inpatient stay) as non-COVID (ISD Scotland specialty codes matching regular expression  
81  $\sim A[289DGHMR] | \sim [CEFHJ]$  or other. The specialties classified as non-COVID include all surgical specialties and  
82 medical specialties such as oncology under which it is unlikely that patients with a primary diagnosis of COVID-19  
83 would be admitted. SMR01 coding lags by about three months, so codes for most admissions after July 2021  
84 were missing.

## 85 *Statistical methods*

86 Rates of detected infection and hospitalised or fatal COVID-19 in the two cohorts were calculated separately  
87 for person-months at risk while unvaccinated, vaccinated with 1 dose and vaccinated with 2 doses. In the cohort  
88 at risk of reinfection rate ratios for hospitalised reinfection were estimated from Cox regression models, with  
89 vaccination status as a time-updated covariate. Time-invariant covariates in these models included variables  
90 previously reported as associated with severe COVID-19 in Scotland [4,6]: baseline age, sex, care home residence,  
91 occupation, and clinical risk category as a factor with three levels: no risk condition, moderate risk condition,  
92 clinically extremely vulnerable. Vaccine efficacy is 1 minus the rate ratio associated with vaccinated versus  
93 unvaccinated status [8].

94 For hospitalised reinfection, a Cox regression model with calendar timescale was used to estimate rate ratios  
95 as case ascertainment should be complete for this outcome. For the broader outcome of any reinfection, case  
96 ascertainment based on unscheduled testing will be incomplete and this may bias estimation of effects on infection  
97 rates where testing rates vary with the covariates of interest. Test-negative control designs do not completely  
98 overcome this [9,10]. To evaluate the sensitivity of the effect estimates to biased case ascertainment, we compared  
99 two alternative Cox regression models: a conventional Cox model with calendar timescale, and a Cox model with  
100 tests as timescale (additionally stratifying by 14-day intervals of calendar time). For the model with tests as  
101 timescale, each test from entry date to exit date (censoring at first positive test) is an observation and tests are  
102 numbered in sequence within each individual. This Cox model with tests as timescale formalizes the test-negative  
103 control design [9] as a survival analysis, as explained in the Discussion.

## 104 **Results**

### 105 *Infections and hospitalisations in those with and without previous infection*

106 Of the 532168 individuals who had tested positive since the start of the epidemic, there were 383182 who  
107 met the criteria for definite first infection: 369547 tested in Pillar 2 who had Ct < 30 and a further 16465 who  
108 had tested positive a second time within 14 days of the first positive test. Of these, 165004 were still under  
109 observation at least 90 days after first testing positive and before the end of the follow-up period on 22 September  
110 2021, forming the cohort at risk of reinfection. Of these, 152655 had not been vaccinated at the time of first  
111 testing positive, 9725 had received one dose and 2624 had received two doses. Average follow-up of this cohort  
112 was 5 months. Figure S1 shows that the number of individuals in the cohort at risk of reinfection increased  
113 rapidly after mid-December 2020, around 90 days after Pillar 2 testing began.

114 The comparison cohort comprised 1177827 individuals matched for age, sex and general practice to those in  
115 the cohort at risk of reinfection, with average follow up of 5.6 months. Of these, 1132118 were unvaccinated  
116 when first sampled. The average testing rate while unvaccinated was higher in the cohort with prior infection  
117 (0.56 per month) than in the comparison cohort (0.27 per month).

118 In the cohort at risk of reinfection, there were 1070 detected reinfections while still unvaccinated, of which  
119 28 were hospitalised or fatal. The corresponding rates per 1000 person-months were 6.8 (95% CI 6.4 to 7.2)  
120 for reinfections and 0.18 (95% CI 0.12 to 0.25) for hospitalisation. In the comparison cohort, there were 36488

121 detected first infections while still unvaccinated of which 1211 were hospitalised or fatal. The corresponding  
122 rates per 1000 person-months were 21.1 (95% CI 20.8 to 21.3) for reinfection and 0.7 (95% CI 0.66 to 0.74) for  
123 hospitalisation. This equates to a reduction in risk of 68% for detected new infection, and 74% for hospitalisation.  
124 Because the testing rate was lower in the comparison cohort than in the cohort at risk of reinfection, this  
125 comparison of detected infections is likely to underestimate the protection against new infection that is conferred  
126 by previous infection.

127 For the subset of hospitalised unvaccinated cases whose SMR01 records were available, the proportion admitted  
128 under non-COVID specialties was 7 of 14 in the cohort at risk of reinfection, and 47 of 421 in the comparison  
129 cohort.

### 130 *Relation of reinfection in fully vaccinated individuals to vaccination status at time of first infection*

131 To investigate whether protection against reinfection among fully vaccinated individuals with a history of  
132 previous infection depends on whether vaccination preceded the first infection, we compared within the cohort  
133 at risk of reinfection the rates of detected reinfection after the second dose of vaccine between those who were  
134 unvaccinated at first infection and those who had received at least one dose before first infection. In these two  
135 groups there were respectively 660 and 56 detected reinfections during follow-up. In a Cox regression model  
136 including age, sex, occupation and clinical risk category as covariates, the rate ratio for detected reinfection after  
137 the second dose of vaccine in those who had been vaccinated at least once before first infection, compared with  
138 those unvaccinated at first infection was 1.35 (95% CI 1.02 to 1.78).

### 139 *Testing rates in the cohort at risk of reinfection*

140 Table S1 shows how crude testing rates in those who were unvaccinated at time of first infection varied with  
141 vaccination status and other covariates. This gives some idea of the likely direction of biases in estimates of the  
142 effects of these covariates on reinfection rates. Testing rates were higher in fully vaccinated than in unvaccinated  
143 or partly vaccinated time intervals, and the associations with other covariates varied by vaccination status.  
144 Testing rates were higher in women than in men, and higher in teachers and health care workers than in other  
145 occupations. In unvaccinated individuals testing rates were higher in care home residents than those living  
146 independently, higher in older than in younger age groups, and higher in those with clinical risk conditions  
147 compared with those with no risk conditions.

### 148 *Effect of vaccination and other covariates on detected reinfection*

149 Figure 1 compares the coefficients estimated with each of the two alternative Cox regression models for  
150 detected reinfection. Table S2 tabulates the covariate distributions and coefficients.

151 In the model with calendar timescale, several factors that were associated with higher testing rates – female  
152 sex, care home residence, and occupation – were associated with detected reinfection. In the model with tests  
153 as timescale these associations were reduced or reversed, consistent with detection bias as the explanation for  
154 the effects estimated with calendar timescale. In both models vaccination was associated with lower rates of  
155 reinfection. With tests as timescale the efficacy of vaccination against reinfection was estimated as 64% (95  
156 percent CI 60% to 68%) for one dose of vaccine and 84% (95 percent CI 81% to 86%) for two doses. With tests as

157 timescale the estimated efficacy of vaccination was higher (rate ratios were lower) than with calendar timescale,  
158 suggesting that the efficacy estimated from the model with calendar timescale may have been biased downwards  
159 by lower detection rates in unvaccinated individuals.

160 Teaching and health care occupations were associated with increased risk of detected reinfection but the rate  
161 ratios were lower in the model with tests as timescale than in the model with calendar timescale, suggesting that  
162 much of this excess may be driven by increased testing. In both models clinical risk conditions were associated  
163 with increased risk of reinfection; a possible explanation for this is that clinical risk conditions are associated  
164 with higher exposure to nosocomial transmission [6]. Time since initial infection was associated with higher rates  
165 of reinfection in the model with calendar timescale but this association was reversed in the model with tests as  
166 timescale.

### 167 *Effect of vaccination and other covariates on hospitalised or fatal reinfection*

168 Table 1 shows that hospitalised or fatal reinfection was associated with older age (median age 54 years in  
169 cases versus 38 years in noncases) and clinical risk conditions. The numbers of hospitalised cases were too small  
170 for associations with occupation to be estimated reliably. The efficacy of two doses of vaccine against hospitalised  
171 reinfection was estimated as 71% (95 percent CI 29% to 88%).

## 172 **Discussion**

### 173 *Statement of principal findings*

- 174 • Among those who are unvaccinated, previous infection with SARS-CoV-2 is associated with a reduction of  
175 about 70% in detected new infections and hospitalisations with COVID-19. The protection against new  
176 infection is likely to be underestimated because of higher testing rates in those who have previously tested  
177 positive, and the protection against severe COVID-19 is likely to be underestimated because specificity (for  
178 severe COVID-19) of hospitalisation with COVID-19 is lower in those who have previously tested positive.
- 179 • Efficacy of vaccination against reinfection and against hospitalisation with COVID-19 is high in those  
180 with previous infection. The combination of natural infection and two doses of vaccine provides maximal  
181 protection against new infection with COVID-19: in this group the level of protection is only slightly less  
182 in those who were vaccinated at first infection than in those who were unvaccinated at first infection.

### 183 *Strengths and limitations*

184 Strengths of this study are the large cohort of test-positive individuals based on ascertainment of all detected  
185 infections in the population, the comprehensive linkage to electronic health records, and the ability to examine  
186 associations with occupation. Although reinfections with new strains were not confirmed by sequencing, the  
187 90-day interval should be enough to exclude persistent infection except in the immunosuppressed. Restriction to  
188 those with definite previous infection – at least two positive tests or Ct < 30 – excludes those who tested positive  
189 only once before September 2020, when the Lighthouse labs began reporting Ct values. Stratification by calendar  
190 time should eliminate almost all confounding by Alpha and Delta variants, as it took only a few weeks for each  
191 of these variants to replace pre-existing strains in Scotland.

192 The main limitation is that without regular scheduled testing, estimates of association with detected reinfection  
193 are subject to ascertainment bias. Because testing rates are lower in unvaccinated than in vaccinated individuals  
194 in this cohort, the efficacy of vaccination is likely to be underestimated by a model with calendar timescale.  
195 We have attempted to overcome this by comparing two alternative models: a conventional Cox regression with  
196 calendar timescale, and a Cox regression with tests as timescale to adjust for differential testing rates. The  
197 model with tests as timescale is equivalent to a test-negative case-control design in which tests on each individual  
198 are numbered sequentially, and sets of cases and controls matched on test number are analysed as a matched  
199 case-control design with conditional logistic regression. Conventional test-negative control designs do not match  
200 on test number, and may include arbitrary restrictions on the number of test-negative control observations per  
201 individual [9–11]. The calendar timescale model assumes that rate ratios for detected infection are equal to rate  
202 ratios for infection on a calendar timescale, even though testing rates vary with vaccination status and other  
203 covariates. The tests as timescale model assumes that rate ratios for positive tests on a test timescale are equal to  
204 rate ratios for infection on a calendar timescale, even though the probability that an infected individual will seek  
205 a test is likely to depend on the severity of symptoms which may vary with vaccination status. This assumption  
206 is implicit in conventional test-negative case-control designs also. Even though neither of these two models is  
207 likely to be correct, comparison of them allows assessment of the robustness of the estimates to violation of  
208 assumptions about how testing rates depend on covariates.

#### 209 *Relation to other studies*

210 In a recent systematic review of ten cohort studies reported up to 8 July 2021, the average reduction in  
211 infection rates in those with previous infection compared with those without evidence of previous infection  
212 was 90% [1]. Only three of these studies extended into the period when vaccines became available, and none  
213 were able to study a population in which Delta had become the predominant variant. In studies based on case  
214 ascertainment through unscheduled testing, the likely size and direction of ascertainment bias cannot be assessed  
215 unless testing rates in exposed and unexposed groups are reported. Reinfection rates have been estimated in two  
216 UK studies of cohorts in which participants were tested regularly: in the SIREN study of health-care workers,  
217 the rate of reinfection up to January 2021 was 2.3 per 1000 person-months [12]; while in the ONS COVID-19  
218 Infection Survey [13], the rate of reinfection up to June 2021 was 4.6 per 1000 person-months. These rates are  
219 rather lower than the rate of 6.8 (95% CI 6.4 to 7.2) that we report for unvaccinated individuals: a possible  
220 explanation may be that reinfection rates have increased since Delta became the dominant variant in Scotland  
221 during May-June 2021.

222 In previous studies we have used severe COVID-19 – defined by entry to critical care or fatal outcome – as the  
223 main outcome measure [4]. As there were few severe cases in the cohort at risk of reinfection we have reported  
224 rates for the broader outcome of hospitalised or fatal COVID-19. The reduction of 68% is similar to an earlier  
225 estimate based on individuals who had received a single dose of vaccine [14] but as noted earlier this is likely to  
226 underestimate the protection against hospitalisations and deaths caused by COVID-19.

227 Two other studies have reported estimates of vaccine efficacy against detected reinfection: a case-control  
228 study in Kentucky reported a 57% reduction [15], and a cohort study of individuals registered with an Israeli



229 healthcare provider reported a 32% reduction but the numbers of cases were small and the confidence interval  
230 was wide [16]. Neither study reported or adjusted for differences in testing rates.

### 231 *Interpretation and implications for policy*

232 These results support other estimates that the protection against infection and hospitalised COVID-19  
233 conferred by prior infection is of similar magnitude to that obtained with vaccination. The protection against  
234 infection is relevant to policies for vaccination certification [17], as recognized by the European Centre for Disease  
235 Prevention in guidance that “For individuals that have recovered from a laboratory-confirmed SARS-CoV-2  
236 infection within 180 days prior to travel, it can be considered to ease quarantine and testing requirements.” [18].  
237 The level of protection conferred by the combination of vaccination and natural infection is only slightly less  
238 when vaccination precedes first infection; this is relevant to concerns that vaccination might narrow subsequent  
239 immune responses through antigenic imprinting [19] arising from a recent report that N antibody levels after  
240 infection are lower in those who had received 2 doses of vaccination before infection [20].

## 241 **Declarations**

### 242 *Public and Patient Involvement statement:*

243 This study was conducted under approvals from the [Public Benefit and Privacy Panel for Health and Social](#)  
244 [Care](#) which includes public and patient representatives.

### 245 *Ethics approval*

246 This study was performed within Public Health Scotland as part of its statutory duty to monitor and  
247 investigate public health problems. Under the [UK Policy Framework for Health and Social Care Research](#) set out  
248 by the NHS Health Research Authority, this does not fall within the definition of research and ethical review was  
249 therefore not required. Individual consent is not required for Public Health Scotland staff to process personal  
250 data to perform specific tasks in the public interest that fall within its statutory role. The statutory basis for  
251 this is set out in Public Health Scotland’s [privacy notice](#).

### 252 *Transparency declaration*

253 PM as the manuscript’s guarantor affirms: that the manuscript is an honest, accurate, and transparent  
254 account of the study being reported; that no important aspects of the study have been omitted; and that any  
255 discrepancies from the study as originally planned and registered have been explained. This manuscript has been  
256 generated directly from the source data by a reproducible research pipeline.

### 257 *Funding*

258 No specific funding was received for this study. HC is supported by an endowed chair from the AXA Research  
259 Foundation.



260 *Author contributions*

261 Conceptualization: all authors. Formal analysis: PM. Writing original draft: PM, HC. Review and editing:  
262 all authors.

263 *Data Availability*

264 The component datasets used here are available via application to the Public Benefits and Privacy Panel for  
265 Health and Social Care at <https://www.informationgovernance.scot.nhs.uk/pbpphsc/>. All source code used for  
266 derivation of variables, statistical analysis and generation of this manuscript is available on [https://github.com/pmckeigue/covid-](https://github.com/pmckeigue/covid-scotland_public)  
267 [scotland\\_public](https://github.com/pmckeigue/covid-scotland_public).

268 *Acknowledgements*

269 We thank Jen Bishop, Bob Taylor and David Caldwell for undertaking the data extraction and linkage.

270 *Competing interest statement*

271 All authors have completed and submitted the International Committee of Medical Journal Editors form for  
272 disclosure of potential conflicts of interest.

273 **References**

274 [1] Kojima N, Shrestha NK, Klausner JD. A Systematic Review of the Protective Effect of Prior SARS-CoV-2  
275 Infection on Repeat Infection 2021;2021.08.27.21262741. doi:[10.1101/2021.08.27.21262741](https://doi.org/10.1101/2021.08.27.21262741).

276 [2] Block J. Vaccinating people who have had covid-19: Why doesn't natural immunity count in the US?  
277 BMJ 2021;374:n2101. doi:[10.1136/bmj.n2101](https://doi.org/10.1136/bmj.n2101).

278 [3] Centers for Disease Control and Prevention. Common Investigation Protocol for Investigating Suspected  
279 SARS-CoV-2 Reinfection. Centers for Disease Control and Prevention 2020. [https://www.cdc.gov/coronavirus/](https://www.cdc.gov/coronavirus/2019-ncov/php/reinfection.html)  
280 [2019-ncov/php/reinfection.html](https://www.cdc.gov/coronavirus/2019-ncov/php/reinfection.html) (accessed August 28, 2021).

281 [4] McKeigue PM, Weir A, Bishop J, McGurnaghan SJ, Kennedy S, McAllister D, et al. Rapid Epidemiological  
282 Analysis of Comorbidities and Treatments as risk factors for COVID-19 in Scotland (REACT-SCOT): A  
283 population-based case-control study. PLOS Medicine 2020;17:e1003374. doi:[10.1371/journal.pmed.1003374](https://doi.org/10.1371/journal.pmed.1003374).

284 [5] Shah ASV, Wood R, Gribben C, Caldwell D, Bishop J, Weir A, et al. Risk of hospital admission with  
285 coronavirus disease 2019 in healthcare workers and their households: Nationwide linkage cohort study. BMJ  
286 (Clinical Research Ed) 2020;371:m3582. doi:[10.1136/bmj.m3582](https://doi.org/10.1136/bmj.m3582).

287 [6] McKeigue PM, McAllister DA, Caldwell D, Gribben C, Bishop J, McGurnaghan S, et al. Relation of  
288 severe COVID-19 in Scotland to transmission-related factors and risk conditions eligible for shielding support:  
289 REACT-SCOT case-control study. BMC Medicine 2021;19:149. doi:[10.1186/s12916-021-02021-5](https://doi.org/10.1186/s12916-021-02021-5).

290 [7] Fenton L, Gribben C, Caldwell D, Colville S, Bishop J, Reid M, et al. Risk of hospital admission with  
291 covid-19 among teachers compared with healthcare workers and other adults of working age in Scotland, March  
292 2020 to July 2021: Population based case-control study. BMJ 2021;374:n2060. doi:[10.1136/bmj.n2060](https://doi.org/10.1136/bmj.n2060).

293 [8] Rodrigues LC, Smith PG. Use of the case-control approach in vaccine evaluation: Efficacy and adverse  
294 effects. *Epidemiologic Reviews* 1999;21:56–72. doi:[10.1093/oxfordjournals.epirev.a017988](https://doi.org/10.1093/oxfordjournals.epirev.a017988).

295 [9] Jackson ML, Nelson JC. The test-negative design for estimating influenza vaccine effectiveness. *Vaccine*  
296 2013;31:2165–8. doi:[10.1016/j.vaccine.2013.02.053](https://doi.org/10.1016/j.vaccine.2013.02.053).

297 [10] Sullivan SG, Tchetgen Tchetgen EJ, Cowling BJ. Theoretical Basis of the Test-Negative Study De-  
298 sign for Assessment of Influenza Vaccine Effectiveness. *American Journal of Epidemiology* 2016;184:345–53.  
299 doi:[10.1093/aje/kww064](https://doi.org/10.1093/aje/kww064).

300 [11] Lopez Bernal J, Andrews N, Gower C, Gallagher E, Simmons R, Thelwall S, et al. Effectiveness of  
301 Covid-19 Vaccines against the B.1.617.2 (Delta) Variant. *New England Journal of Medicine* 2021;385:585–94.  
302 doi:[10.1056/NEJMoa2108891](https://doi.org/10.1056/NEJMoa2108891).

303 [12] Hall VJ, Foulkes S, Charlett A, Atti A, Monk EJM, Simmons R, et al. SARS-CoV-2 infection rates of  
304 antibody-positive compared with antibody-negative health-care workers in England: A large, multicentre, prospec-  
305 tive cohort study (SIREN). *Lancet (London, England)* 2021;397:1459–69. doi:[10.1016/S0140-6736\(21\)00675-9](https://doi.org/10.1016/S0140-6736(21)00675-9).

306 [13] Office for National Statistics. Coronavirus (COVID-19) Infection Survey technical article: Analy-  
307 sis of reinfections of COVID-19: June 2021. Office for National Statistics; 2021. [https://www.ons.gov.uk/  
308 peoplepopulationandcommunity/healthandsocialcare/conditionsanddiseases/articles/coronaviruscovid19infectionsurveytechnical  
309 june2021](https://www.ons.gov.uk/peoplepopulationandcommunity/healthandsocialcare/conditionsanddiseases/articles/coronaviruscovid19infectionsurveytechnicaljune2021).

310 [14] Agrawal U, Katikireddi SV, McCowan C, Mulholland RH, Azcoaga-Lorenzo A, Amele S, et al. COVID-19  
311 hospital admissions and deaths after BNT162b2 and ChAdOx1 nCoV-19 vaccinations in 2.57 million people in  
312 Scotland (EAVE II): A prospective cohort study. *The Lancet Respiratory Medicine* 2021;0. doi:[10.1016/S2213-  
313 2600\(21\)00380-5](https://doi.org/10.1016/S2213-2600(21)00380-5).

314 [15] Cavanaugh AM. Reduced Risk of Reinfection with SARS-CoV-2 After COVID-19 Vaccination , May/June  
315 2021. *MMWR Morbidity and Mortality Weekly Report* 2021;70. doi:[10.15585/mmwr.mm7032e1](https://doi.org/10.15585/mmwr.mm7032e1).

316 [16] Gazit S, Shlezinger R, Perez G, Lotan R, Peretz A, Ben-Tov A, et al. Comparing SARS-CoV-2 natural  
317 immunity to vaccine-induced immunity: Reinfections versus breakthrough infections 2021:2021.08.24.21262415.  
318 doi:[10.1101/2021.08.24.21262415](https://doi.org/10.1101/2021.08.24.21262415).

319 [17] Limb M. Compulsory covid vaccination: Loss of care home workers puts beds and care at risk, warn  
320 unions and providers. *BMJ* 2021;374:n2318. doi:[10.1136/bmj.n2318](https://doi.org/10.1136/bmj.n2318).

321 [18] European Centre for Disease Prevention and Control. Guidance for COVID-19 quarantine and testing  
322 of travellers. European Centre for Disease Prevention and Control 2021. [https://www.ecdc.europa.eu/en/  
323 publications-data/guidance-covid-19-quarantine-and-testing-travellers](https://www.ecdc.europa.eu/en/publications-data/guidance-covid-19-quarantine-and-testing-travellers) (accessed October 27, 2021).

324 [19] Wheatley AK, Fox A, Tan H-X, Juno JA, Davenport MP, Subbarao K, et al. Immune imprinting and  
325 SARS-CoV-2 vaccine design. *Trends in Immunology* 2021;0. doi:[10.1016/j.it.2021.09.001](https://doi.org/10.1016/j.it.2021.09.001).

326 [20] UK Health Security Agency. COVID-19 vaccine surveillance report - week 42. [https://Assets.publish-  
327 ing.service.gov.uk/Government/Uploads/System/Uploads/Attachment\\_data/File/1027511/Vaccine-Surveillance-Report-  
328 Week-42.pdf](https://assets.publishing.service.gov.uk/Government/Uploads/System/Uploads/Attachment_data/File/1027511/Vaccine-Surveillance-Report-Week-42.pdf); UK Health Security Agency; 2021. [https://assets.publishing.service.gov.uk/government/uploads/  
329 system/uploads/attachment\\_data/file/1027511/Vaccine-surveillance-report-week-42.pdf](https://assets.publishing.service.gov.uk/government/uploads/system/uploads/attachment_data/file/1027511/Vaccine-surveillance-report-week-42.pdf).

It is made available under a [CC-BY-NC-ND 4.0 International license](https://creativecommons.org/licenses/by-nc-nd/4.0/).

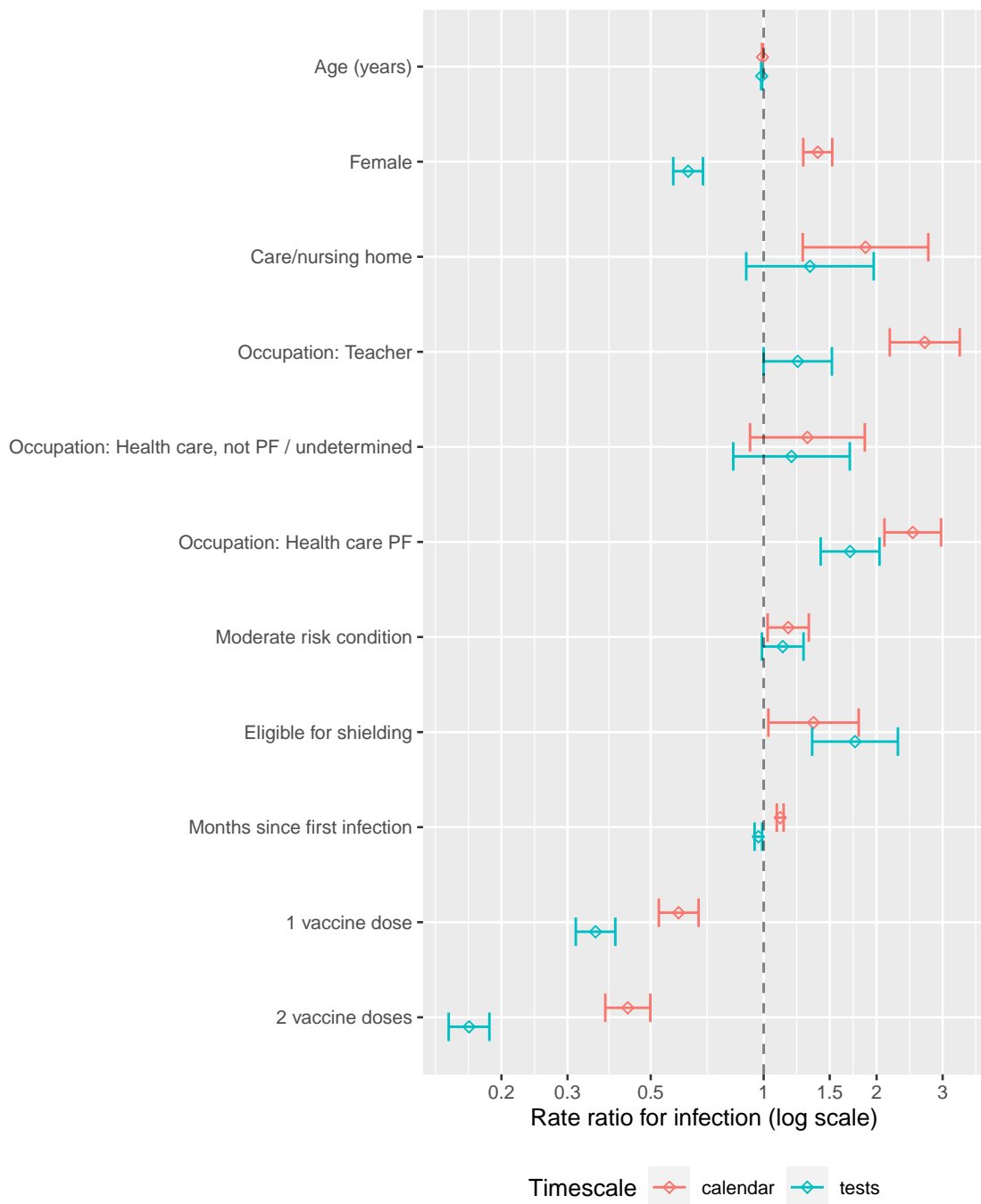


Figure 1: Comparison of Cox regression models for detected reinfection with calendar timescale and tests as timescale. PF, patient-facing.

Table 1: Rate ratios for hospitalised or fatal reinfection in cohort at risk of reinfection

	Non-case intervals (1928802)	Cases (60)	Rate ratio (95% CI)	<i>p</i> -value
Age (years)	38 (IQR 24 to 54)	55.5 (IQR 34.2 to 72.5)	1.03 (1.01, 1.04)	0.004
Female	1001602 (52%)	39 (65%)	1.71 (1.00, 2.92)	0.05
Care/nursing home	21178 (1%)	7 (12%)	2.98 (1.14, 7.84)	0.03
<b>Occupation</b>				
Other / undetermined	1800545 (93%)	57 (95%)	.	.
Teacher	32763 (2%)	0 (0%)	0.00 (0.00, Inf)	1
Health care, not PF / undetermined	28186 (1%)	1 (2%)	1.32 (0.18, 9.67)	0.8
Health care PF	67308 (3%)	2 (3%)	1.32 (0.31, 5.56)	0.7
<b>Clinical risk category</b>				
No risk condition	1575010 (82%)	29 (48%)	.	.
Moderate risk condition	302916 (16%)	22 (37%)	2.87 (1.54, 5.38)	$9 \times 10^{-4}$
Eligible for shielding	50876 (3%)	9 (15%)	6.4 (2.8, 14.9)	$1 \times 10^{-5}$
Months since first infection	5.8 (IQR 4 to 7.7)	5.1 (IQR 3.6 to 7.3)	0.95 (0.83, 1.08)	0.4
<b>Vaccination status (time-updated)</b>				
Unvaccinated	877508 (45%)	31 (52%)	.	.
1 dose	464312 (24%)	14 (23%)	0.49 (0.24, 1.02)	0.06
2 doses	586982 (30%)	15 (25%)	0.29 (0.12, 0.71)	0.006

For age and months since first infection, median and interquartile range (IQR) is given

Vaccination status defined as number of doses received at least 14 days before presentation date.

PF, patient-facing

Rate ratios estimated in a Cox regression model that includes all covariates in the table

330 **Supplementary Figures and Tables**

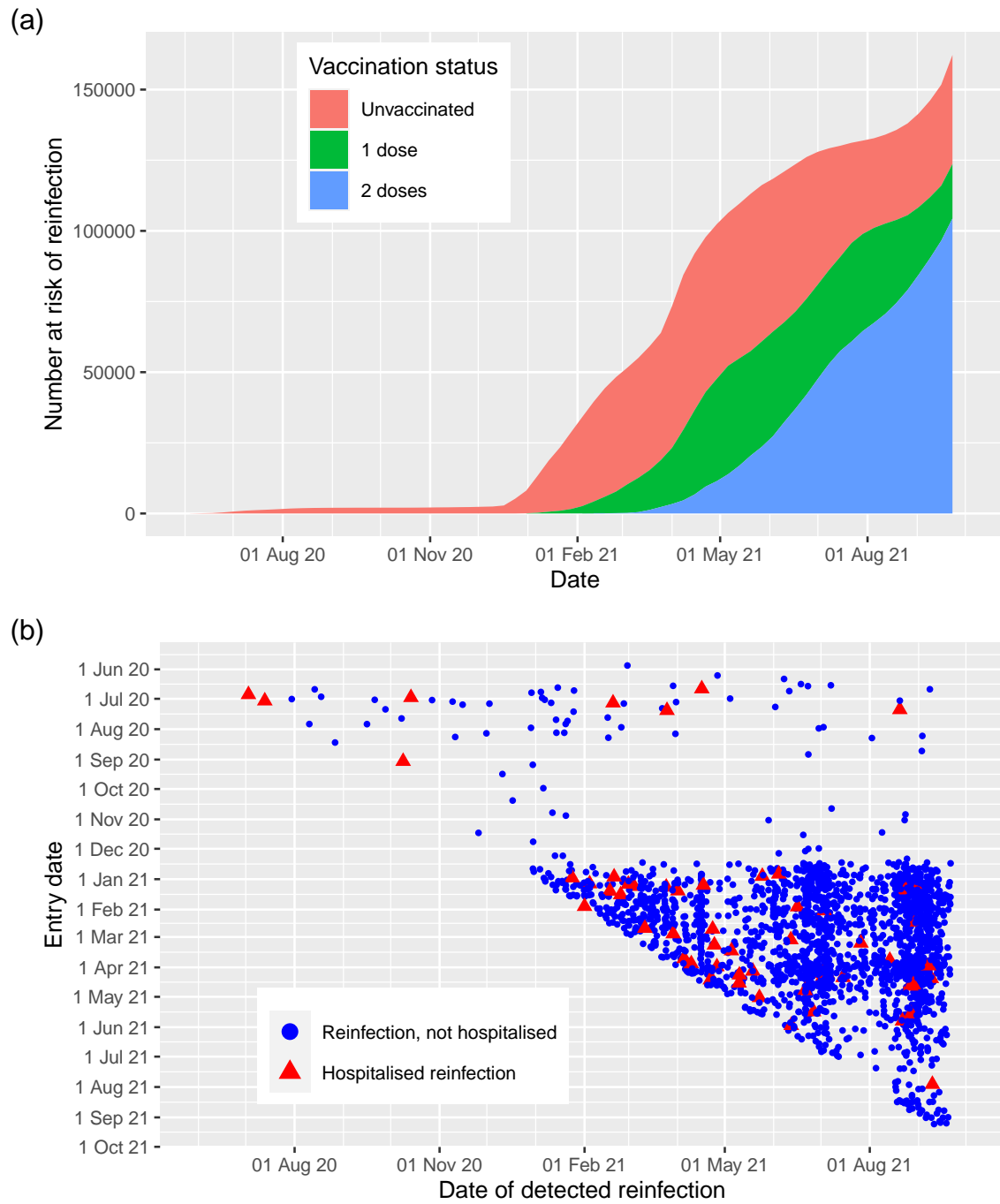


Figure S1: Cohort at risk of reinfection: (a) detected reinfections by entry date and date of positive test; (b) Numbers at risk on each date by vaccination status. Vaccination status is coded as number of doses received at least 14 days before

Table S1: Rate of PCR testing for SARS-CoV-2 in cohort at risk for reinfection, by vaccination status and covariates

Variable	Number of tests		Testing rate per person-month	
	0 or 1 dose	2 doses	0 or 1 dose	2 doses
All	197534	201132	0.56	0.77
<b>Sex</b>				
Female	138098	148432	0.80	0.99
Male	59436	52700	0.33	0.47
<b>Age group</b>				
0-60 years	177476	163312	0.53	0.85
60-74 years	14235	31662	1.01	0.59
75+ years	5823	6158	0.98	0.35
<b>Residence</b>				
Independent	193620	197624	0.55	0.77
Care/nursing home	3914	3508	1.50	0.71
<b>Occupation</b>				
Other / undetermined	175083	174203	0.52	0.74
Health care PF	8945	15876	1.77	0.90
Teacher	10489	5224	1.96	1.21
Health care, not PF / undetermined	3017	5829	1.23	0.85
<b>Clinical risk category</b>				
No risk condition	164664	156385	0.53	0.81
Moderate risk condition	28799	37832	0.78	0.65
Eligible for shielding	4071	6915	0.93	0.57

Vaccination status defined as number of doses received at least 14 days before test date.

PF, patient-facing

It is made available under a [CC-BY-NC-ND 4.0 International license](https://creativecommons.org/licenses/by-nc-nd/4.0/) .

Table S2: Rate ratios for detected reinfection in cohort at risk of reinfection: comparison of models with calendar timescale and tests as timescale

	Non-case intervals (1926743)	Cases (2119)	Calendar timescale		Tests as timescale	
			Rate ratio (95% CI)	<i>p</i> -value	Rate ratio (95% CI)	<i>p</i> -value
Age (years)	38 (IQR 24 to 54)	31 (IQR 21 to 48)	0.99 (0.99, 1.00)	$9 \times 10^{-6}$	0.99 (0.98, 0.99)	$3 \times 10^{-13}$
Female	1000346 (52%)	1295 (61%)	1.39 (1.28, 1.52)	$3 \times 10^{-13}$	0.63 (0.57, 0.69)	$2 \times 10^{-23}$
Care/nursing home	21154 (1%)	31 (1%)	1.87 (1.27, 2.75)	0.001	1.33 (0.90, 1.96)	0.2
<b>Occupation</b>						
Other / undetermined	1798753 (93%)	1849 (87%)	.	.	.	.
Teacher	32674 (2%)	89 (4%)	2.69 (2.17, 3.33)	$2 \times 10^{-19}$	1.23 (1.00, 1.52)	0.05
Health care, not PF / undetermined	28155 (1%)	32 (2%)	1.31 (0.92, 1.86)	0.1	1.19 (0.83, 1.70)	0.3
Health care PF	67161 (3%)	149 (7%)	2.50 (2.10, 2.97)	$6 \times 10^{-25}$	1.70 (1.42, 2.04)	$8 \times 10^{-9}$
<b>Clinical risk category</b>						
No risk condition	1573291 (82%)	1748 (82%)	.	.	.	.
Moderate risk condition	302622 (16%)	316 (15%)	1.16 (1.02, 1.32)	0.02	1.12 (0.99, 1.28)	0.07
Eligible for shielding	50830 (3%)	55 (3%)	1.36 (1.03, 1.79)	0.03	1.75 (1.35, 2.28)	$3 \times 10^{-5}$
Months since first infection	5.8 (IQR 4 to 7.7)	6.9 (IQR 4.8 to 8.6)	1.11 (1.08, 1.13)	$2 \times 10^{-21}$	0.97 (0.95, 0.99)	0.006
<b>Vaccination status (time-updated)</b>						
Unvaccinated	876376 (45%)	1163 (55%)	.	.	.	.
1 dose	463917 (24%)	409 (19%)	0.59 (0.53, 0.67)	$5 \times 10^{-17}$	0.36 (0.32, 0.40)	$2 \times 10^{-62}$
2 doses	586450 (30%)	547 (26%)	0.43 (0.38, 0.50)	$2 \times 10^{-32}$	0.16 (0.14, 0.19)	$5 \times 10^{-177}$

For each numeric variable, median and interquartile range (IQR) is given.

Vaccination status defined as number of doses received at least 14 days before presentation date.

PF, patient-facing

Rate ratios estimated in Cox regression models that include all covariates in the table

The model with tests as timescale is additionally stratified by 14-day calendar time interval.