

1 **Coronary Artery Disease (CAD) - risk factors and causes: In Libyan patients.**

2

3 Osama Bheleel^a, Alaa Abdulhamid^a, Ibtisam Alhadi^a, Hanaa Grash^a, Hajer almuaket^b,

4 Mohamed Hadi Mohamed Abdelhamid*^{c,d}

5 ^a Department of Cardiology, Tripoli University Hospital, Tripoli, Libya.

6 ^b Department of Statistics - Statistical Bioinformatics, Biotechnology Research Center

7 (BTRC), Tripoli - Libya.

8 ^d Department of Cell Biology and Tissue Culture, Biotechnology Research Center

9 (BTRC), Tripoli - Libya.

10 ^c National Center of Disease Control (NCDC), Tripoli – Libya.

11

12

13

14

15

16

17

18

19

20

21

1
2
3
4
5
6
7
8
9
10
11
12
13
14
15
16
17
18
19
20
21

*** Corresponding author:** Mohamed Hadi Mohamed Abdelhamid, National Center of Disease Control (NCDC); Department of Cell Biology and Tissue Culture, Biotechnology Research Center (BTRC), Tripoli - Libya; Email: Mohamed.abdelhamid@btc.org.ly ; Moh9363@gmail.com Phone N: 00 218 916030276.

Funding

This research did not receive any specific grant from funding agencies in the public, commercial, or not-for-profit sectors.

1 **Abstract**

2 **Aims**

3 Coronary artery disease (CAD) is the leading cause of death worldwide in both men and
4 women. Accordingly, we retrospectively reviewed the effects of various risk factors on
5 coronary angiographic outcomes.

6 **Methods and Results**

7 Data were collected from the catheter lab through Tripoli university hospital records,
8 whereas the team reviewed clinical data and coronary artery diagrams for one year from
9 01/04/2019 to 31/03/2020. In our study, the total number of cases was 666; 401 male
10 and 265 female, ranging in age between 27 and 91 years. Considering the data, a
11 significantly increased incidence of coronary artery disease (CAD) among the male who
12 smokes, and who were less than 60 years of age. Furthermore, in the present study, the
13 total number of normal patients was predominantly female. The most common risk
14 factors for women were diabetes mellitus (DM), hypertension (HTN) (12%,13%
15 respectively). While the men share the significant effects of smoking on coronary
16 angiography (C. Angio) findings (40.52%), and most of them underwent a percutaneous
17 coronary intervention (PCI).

18 **Conclusions**

19 In our study, there was evidence that CAD is a prevalent disease among the middle-
20 aged populations with male gender preference. The risk factors including diabetes,
21 hypertension, and smoking are the most contributing factors for the developing CAD in
22 Libya.

1
2
3
4
5
6
7
8
9
10
11
12
13
14
15
16
17
18

Keywords: coronary artery disease; percutaneous coronary intervention; risk factors;
coronary angiography; Libya

1 Introduction

2 Coronary artery disease (CAD) is the leading cause of death worldwide in both men
3 and women. Approximately 1 in 30 patients with stable CAD experiences cardiovascular
4 death or myocardial infarction (MI) each year ¹. It is the third leading cause of mortality
5 worldwide and is associated with 17.8 million deaths annually. As well it places a large
6 economic burden on the community ¹⁻³. Moreover, there is little literature related to the
7 epidemiology of CAD in Africa. Though, changes in lifestyle and modernization have
8 risen the prevalence of CAD. Previous studies reported that the incidence of coronary
9 artery disease (CAD) is rising by 160% in the Middle East and North Africa, and the
10 mortality rate from CAD was high (120 per 100,000 populations) ^{4,5}. As in Tunisia,
11 where studies have reported coronary artery disease (CAD) mortality rates increased by
12 11.8% for men and 23.8% for women, between 1997 and 2009, further causing the
13 death of 70% of cardiovascular patients ^{6,7}. In addition, coronary artery disease has
14 reached epidemic proportions in Egypt, the mortality rates due to CAD was measured to
15 be 280 per 100,000 populations⁸.

16 There are several risk factors for CAD, some can be controlled but not all. The non-
17 modifiable risk factors are as follows; age, sex, race, family history, and/or physio-
18 pathological conditions ^{9,10}.

19 Moreover, according to the 52 - country case-control study, nine easily measurable,
20 controllable, and/or modifiable risk factors account for more than 90% of the heart
21 diseases risk ¹¹. These nine risk factors include smoking, abnormal blood lipid levels,
22 high blood pressure, diabetes, obesity, a lack of physical activity, junk food, alcohol
23 overconsumption, and the psychosocial index ^{11,12}. Among these cases, the most

1 common form of cardiovascular disease, with an estimated prevalence of CAD in men
2 than women ¹¹. In additionally, several studies showed that modifiable classical risk
3 factors for CAD, except for smoking, were more prevalent in women and were
4 associated with their diet ^{13,14}.

5 In fact, there are three main strategies are available for angina control and prevention or
6 reversal of plaque progression: medical treatment, Percutaneous coronary intervention
7 PCI, and/ or Coronary artery bypass grafting CABG¹⁵.

8 Percutaneous coronary intervention (PCI) is often part of standard therapy in patients
9 presenting with significant coronary artery disease (CAD). In the same vein, in patients
10 with stable CAD, PCI can be considered a valuable initial mode of revascularisation in
11 all patients with objective large ischaemia in the presence of almost every lesion subset,
12 with only one exception: chronic total occlusions that cannot be crossed ¹⁶.

13 Since 1977, when Grundzig performed the first PTCA in Zurich, percutaneous
14 coronary intervention has been recognized as a leading procedure in treating coronary
15 artery disease patients and has become a common part of routine practice worldwide ¹⁷.

16 Correspondingly, Coronary artery bypass grafting (CABG) is an acceptable procedure
17 used to treat coronary artery disease, also management of refractory to medical
18 treatment. Globally, there are around one million patients to undergo coronary artery
19 bypass graft (CABG) surgery each year ¹⁸.

20 In Libya, there is rapid expansion and uptake of coronary angiography (C. Angio)
21 procedure. However, when taking the entire clinical practice in Libya into consideration,
22 limited data are available to describe nationwide contemporary practice patterns of C.

1 Angio. Yet, until now, no unified nationwide registry has been established to
2 demonstrate the accurate figures of cardiac procedures; Despite this, there has been a
3 limited routine collection of related data particularly around quality, safety, and cost.
4 With respect to the growing need for C. Angio, the development of C. Angio registries in
5 Libya was of growing interest. As a clinical quality registry, a C. Angio database is an
6 important mechanism of monitoring and benchmarking the performance of clinical care,
7 improving safety and outcomes, contributing to reducing treatment costs, and regulating
8 guidelines.

9 In this context, the objective of this study was to describe the characteristics and
10 outcome of consecutive unselected Libyan patients who underwent diagnostic C. Angio
11 in a nationwide cohort of one year. The present study is the first part of a study of
12 coronary artery disease risk factors and causes in Libyan patients.

13 **Material and Method**

14

15 **Study population**

16 The present study is the first part of a study of coronary artery disease risk factors and
17 causes in Libyan patients. The total number of patients records reviewed who
18 underwent diagnostic C. Angio during this study was 666 cases, however, 51 cases
19 were dropped due to personal reasons hence the data of these cases were excluded.
20 Therefore, 615 cases were contributed to this study: 371 male and 244 female. The
21 rang age of the study population was 27-91 years. Coronary Angio patients' reports
22 were revised in the Cath Lab of Tripoli University Hospital.

1 Data collection

2 The data was collected from the catheter lab in Tripoli University Hospital records, the
3 team reviewed all clinical data of patients such as; (BMI, history family, lipid profiles,
4 age, gender, chronic diseases, and others), we also reviewed all coronary artery
5 diagrams during one year from 01/04/2019 to 31/03/2020 retrospectively. The axis to
6 the files of the patients and their contact details was extremely difficult. Furthermore,
7 there are clinical data is missing such as physical activity, the behavior of feeding, and
8 physio-pathological conditions.

9 Ethics statement

10 The study was approved by the Ethics Committee (Libyan National committee for
11 Biosafety and Bioethics) and the protocol has been previously ¹⁹. An informed consent
12 was obtained in all patients; and the study was carried out according to Helsinki
13 declaration.

14 Statistical analysis

15 Continuous variables were presented as mean \pm SD and were compared using Two-
16 way analysis of variance. We divided the cases age to three group (age; ≤ 40 , 40-60 and
17 ≥ 60 yeas) and two generals risk factors (modifiable, non-modifiable risk factor). In all
18 cases, p values < 0.05 were considered statistically significant. All data were processed
19 using the Statistical Package for Social Sciences, version 25 (SPSS, Chicago, IL, USA)

20 Results

21 The total number of cases is 615; 371 (60.32 %) men and 244 (39.67 %) women, The
22 mean age of the study population was 59.4 ± 13.4 years (an age range, 27–91 years).

1 We have recorded that no classical risk factors with 276 patients, representing 44% of
2 total cases. Furthermore, these cases were dilated cardiomyopathy, left bundle branch
3 block, and preoperative assessment for cardiac surgery.

4 Non-modifiable risk factors for CAD

5

6 The findings of this study showed that the percentage of men who underwent C. Angio
7 was (55.19 ± 10.2; P ≤ 0.05). There was Also, a significant difference was found
8 between the two genders with respect to the number of underwent C. Angio in favor of
9 men. The results indicate that ages were mostly between 40 and 60 years old (52.92%).
10 At this age group, the percentage of cases was significantly higher for men compared to
11 women (56.42% versus 48.55%; P ≤ 0.05). The demographic characteristics and clinical
12 data of the participants are summarized in Table 1.

13 Modifiable risk factors for CAD

14

15 According to the results of this study, the most common risk factors for women were
16 diabetes mellitus (DM), hypertension (HTN), and women who have DM + HTN
17 (12.8%,13.9%, 52.17% respectively), however no cases of smoke have been reported
18 among women (Table. 1).

19 The prevalence intensity of men risk factors was as follows: smoking (36.7%), HTN
20 (14.11%) and DM (12.04 %), which were lower compared to women's cases at the last
21 two factors (Table. 1). The incidence of smokers was significantly higher than the other
22 risk factors.

23 Result of coronary angiography (C. Angio)

24

1 The results of C Angio showed that the number of cases that do not require any
2 medical or surgical intervention was 186 (30%), of whom the largest percentage of them
3 were women. While the data showed that the percentage of men who underwent
4 Medical, PCI, and CABG were (24.74%, 40.97%, and 14.55% respectively). The
5 incidence of PCI cases was one and a half-time for men than for women (Fig.1). The
6 procedure of PCI and CABG was increasing with age and includes age >40 years in
7 men and >60 years in women (Fig.2)

8 Furthermore, our data show that Percutaneous coronary intervention (PCI) was
9 significantly influenced by risk factors than the others. Approximately 15% of all
10 Coronary artery bypass grafting (CABG) were performed on men with diabetes. While
11 strong evidence was found that men who underwent a PCI were smokers (42%) (a p-
12 value <0.05 was considered significant) (Fig. 3).

13 Discussion

14 The current study represents the first Libyan enrollment involving CAD and the result of
15 C. Angio for patients managed at the public sector, in university and regional hospitals.
16 Over half of the patients who underwent C. Angio were men (60.32%), which is to be
17 expected because CAD is a primarily men gender disease. This is consistent with the
18 data obtained by Adda et al (2019), who found that patients who underwent C. Angio
19 are more men than women (88.5% vs 21.5% respectively) ⁶.

20 The second strong observation is that most of the cases that underwent of C. Angio
21 fall into the age group between 40 and 60 years, and after that the patients with age
22 over 60 years. In the same vein, the hypothesis by different previous studies showed
23 that in women under the age of 55, the incidence of CAD is one-third that of men.

1 However, it gradually increases with age when crossing over 55 years. This hypothesis
2 has been generally accepted²⁰⁻²².

3 Since the physiological differences between two genders suggest that age-related
4 changes in endogenous sex hormones, such as estrogen, progesterone, and
5 androgens, play a pivotal role in controlling CAD. Exceptionally, the hormone estrogen
6 plays essential acting as a cofactor in the onset of CAD in women ^{23,24}.

7 The CAD is the disease of the middle age group which is the product group in the
8 community. This fact has an impact on the productivity and performance of the age
9 group mentioned earlier, in the matter of fact, this will be reflected on the community in
10 various aspects as absences from work, the cost of the health care services, expensive
11 medical and device therapy, and the future outcome in the form of chronic heart failure
12 and its sequel. Those facts highlight the prevention strategies and education of the
13 community starting at early age groups especially among adolescents aiming to reduce
14 the burden of the CAD is the cornerstone in any health strategies for the ministry of
15 health.

16 Moreover, CAD was affecting all groups of the study as a result of modernization
17 associated with the modifiable risk factors for CVD, including diabetes, high blood
18 pressure, smoke, and both risk factors.

19 In addition, more than half of our population sample had at least one major risk factor.
20 Regarding the risk factors for CAD, about one-third of the cases were diabetics and
21 hypertension or were having both. As both diabetes mellitus and hypertension are
22 prevalent diseases in our community, the tighter glycemic control of diabetics and

1 targeting the high blood pressure will result in a reduction of the incidence and
2 prevalence of CAD in the community ^{25–27}.

3 So far, in men, smoking is one of the major risk factors for cardiovascular diseases
4 causes and is a leading cause of death. This effect is very prevalent. It should be noted
5 that the percentage of Libyan smokers aged between 25 – 64 years among men was
6 very high at 49.6% ²⁸. We believe that the high level of Libyan smokers resulted in an
7 increase in the number of men who underwent C. Angio in our study.

8 It also appears that the exposure to multi-factors at the same time increases the
9 requiring medical or PCI intervention if compared to normal C. Angio result.

10 Considering the results of the C. Angio in our studied population, over 40% of the
11 studies revealed normal coronary angiography, most of them were women (women
12 patients who underwent the C. Angio have normal epicardial coronary arteries), this
13 again highlights that screening for CAD among female gender ought to be reevaluated
14 with the aim to use more non-invasive modalities of screening for CAD such as stress
15 echocardiography or CT-coronary angiography and not to depend only on exercise
16 ECG for sending patients for C. Angio as it has high false-positive results. A 34.1% of
17 the cases underwent PCI implantation, the most stented single artery is left anterior
18 descending artery 12.8% (data not shown).

19 Limitations of study

20 Since our study is a retrospective study, there were difficulties in obtaining the data of
21 the patients. There is no archiving system for the results of the coronary angiograms,
22 and the personal data of the patients were not properly taken. The contact telephone
23 numbers were missing. Most of the patient's data regarding the cardiac risk factors are
24 not recorded. Furthermore, the details of the procedure as the approach either femoral

1 or radial, the medications during the procedure, the complications either immediate or
2 remote are not registered. In the place of the study, no electronic archiving of the patient
3 information is available, depending only on paper archiving which was not organised
4 professionally, all those facts have a negative impact on our research team.

5 **Conclusion:**

6 In our study, there was evidence that CAD is a prevalent disease among the middle-
7 aged populations with male gender preference. Clinical data indicated that the Libyan
8 adult population is of a high level of CAD risk factors including diabetes, hypertension,
9 and smoking are the most contributing factors for the development of CAD, those risk
10 factors are modifiable and preventable direct causes of CAD, which may require urgent
11 decision-making to address national control measures regarding CAD.

12 The national registry of the coronary procedure is crucial and mandatory for patient
13 safety and to have quality control of the services provided in the cath labs.

14

15 **Acknowledgements**

16 The authors wish to thank all doctors, nurses, and technicians in the Department of
17 Cardiology at Tripoli University Hospital who were involved in this study, and Hamza El-
18 thelb for editing the text.

19 **Conflicts of interest**

20 The authors have declared that no competing interests exist.

21

22 **Contributors**

23 (I)Manuscript writing: All authors; (II) Final approval of manuscript: All authors.

1 Reference

- 2 1. Stergiopoulos K, Boden WE, Hartigan P, Möbius-Winkler S, Hambrecht R, Hueb
3 W, Hardison RM, Abbott JD, Brown DL. Percutaneous coronary intervention
4 outcomes in patients with stable obstructive coronary artery disease and
5 myocardial ischemia : A collaborativemeta-analysis of contemporary randomized
6 clinical trials. *JAMA Intern Med* 2014;**174**:232–240.
- 7 2. Thom T, Haase N, Rosamond W, Howard VJ, Rumsfeld J, Manolio T, Zheng ZJ,
8 Flegal K, O'Donnell C, Kittner S, Lloyd-Jones D, Goff DC, Hong Y. Heart disease
9 and stroke statistics - 2006 Update: A report from the American Heart Association
10 Statistics Committee and Stroke Statistics Subcommittee. *Circulation*. 2006.
- 11 3. Roth GA, Abate D, Abate KH, Abay SM, Abbafati C, Abbasi N, Abbastabar H,
12 Abd-Allah F, Abdela J, Abdelalim A, Abdollahpour I, Abdulkader RS, Abebe HT,
13 Abebe M, Abebe Z, Abejie AN, Abera SF, Abil OZ, Abraha HN, Abrham AR, Abu-
14 Raddad LJ, Accrombessi MMK, Acharya D, Adamu AA, Adebayo OM, Adedoyin
15 RA, Adekanmbi V, Adetokunboh OO, Adhena BM, Adib MG, et al. Global,
16 regional, and national age-sex-specific mortality for 282 causes of death in 195
17 countries and territories, 1980–2017: a systematic analysis for the Global Burden
18 of Disease Study 2017. *Lancet* 2018;**392**:1736–1788.
- 19 4. Gaziano TA, Bitton A, Anand S, Abrahams-Gessel S, Murphy A. Growing
20 Epidemic of Coronary Heart Disease in Low- and Middle-Income Countries. *Curr*
21 *Probl Cardiol* Elsevier Inc.; 2010;**35**:72–115.
- 22 5. Hussain M, Khan N, Uddin M, Nozha MM Al. Chest pain, coronary artery disease
23 and risk factors: A global snapshot. *J Dow Univ Heal Sci Karachi* 2014;**8**:74–80.

- 1 6. Addad F, Mahdhaoui A, Gouider J, Boughzela E, Kamoun S, Boujnah MR,
2 Haouala H, Gamra H, Maatouk F, Khalfallah A Ben, Kachboura S, Baccar H,
3 Halima N Ben, Guesmi A, Sayahi K, Sdiri W, Neji A, Bouakez A, Milouchi S,
4 Battikh K, Jullieres Y, Danchin N, Monsuez JJ, Mulak G, Hagege A, Bataille V,
5 Chettaoui R, Mourali MS. Management of patients with acute ST-elevation
6 myocardial infarction: Results of the FAST-MI Tunisia registry. *PLoS One*
7 2019;**14**:1–11.
- 8 7. Saidi O, Mansour N Ben, O’Flaherty M, Capewell S, Critchley JA, Romdhane H
9 Ben. Analyzing Recent Coronary Heart Disease Mortality Trends in Tunisia
10 between 1997 and 2009. *PLoS One* 2013;**8**.
- 11 8. Almahmeed W, Samir Arnaout M, Chettaoui R, Ibrahim M, Ibrahim Kurdi M, Awad
12 Taher M, Mancina G. Coronary artery disease in Africa and the Middle East. *Ther*
13 *Clin Risk Manag* 2012;**8**:65–72.
- 14 9. Sekhri T, Kanwar RS, Wilfred R, Chugh P, Chhillar M, Aggarwal R, Sharma YK,
15 Sethi J, Sundriyal J, Bhadra K, Singh S, Rautela N, Chand T, Singh M, Singh SK.
16 Prevalence of risk factors for coronary artery disease in an urban Indian
17 population. *BMJ Open* 2014;**4**:1–7.
- 18 10. Wilson PWF. Established Risk Factors and Coronary Artery Disease: The
19 Framingham Study. *Am J Hypertens* 1994;**7**:7S-12S.
- 20 11. Yusuf S, Hawken S, Ôunpuu S, Dans T, Avezum A, Lanas F, McQueen M, Budaj
21 A, Pais P, Varigos J, Lisheng L. Effect of potentially modifiable risk factors
22 associated with myocardial infarction in 52 countries (the INTERHEART study):

- 1 case-control study. *Lancet* 2004;**364**:937–952.
- 2 12. Campbell DJ. Why do men and women differ in their risk of myocardial infarction?
3 *Eur Heart J* 2008;**29**:835–836.
- 4 13. Khamis RY, Ammari T, Mikhail GW. Gender differences in coronary heart
5 disease. *Heart* 2016;**102**:1142–1149.
- 6 14. Najafi M, Sheikhvatan M. Gender differences in coronary artery disease:
7 Correlational study on dietary pattern and known cardiovascular risk factors. *Int*
8 *Cardiovasc Res J* 2013;**7**:124–129.
- 9 15. Doenst T, Haverich A, Serruys P, Bonow RO, Kappetein P, Falk V, Velazquez E,
10 Diegeler A, Sigusch H. PCI and CABG for Treating Stable Coronary Artery
11 Disease: JACC Review Topic of the Week. *J Am Coll Cardiol* 2019;**73**:964–976.
- 12 16. Silber S, Albertsson P, Avilés FF, Camici PG, Colombo A, Hamm C, Jørgensen E,
13 Marco J, Nordrehaug JE, Ruzyllo W, Urban P, Stone GW, Wijns W, Deckers J,
14 Bassand JP, Battler A, Bertrand M, Betriu AG, Cokkinos D, Danchin N, Mario C
15 Di, Feyter P de, Fox K, Indolfi C, Karsch K, Steg PG, Tendera M, Werf F Van de,
16 Verheugt FWA, Widimski P. Guidelines for percutaneous coronary interventions.
17 *Eur Heart J* 2015;**26**:804–847.
- 18 17. Turina M. Gruentzig, Senning and a young surgeon: 40 years ago the first heart
19 team. *Cardiovasc Med* 2017;**20**:209–209.
- 20 18. Nalysnyk L, Fahrbach K, Reynolds MW, Zhao SZ, Ross S. Adverse events in
21 coronary artery bypass graft (CABG) trials: A systematic review and analysis.

- 1 *Heart* 2003;**89**:767–772.
- 2 19. Jaswal DS, Saha TK, Aggarwal N. Risk factors for coronary artery disease in
3 Indians. *Med J Armed Forces India* 2008;**64**:317–319.
- 4 20. Barrett-Connor E, Bush TL. in Women Estrogen Coronary Heart Disease. *Jama*
5 1991;**265**:1861–1867.
- 6 21. Hochner-Celnikier D, Manor O, Gotzman O, Lotan H, Chajek-Shaul T. Gender
7 gap in coronary artery disease: Comparison of the extent, severity and risk factors
8 in men and women aged 45-65 years. *Cardiology* 2002;**97**:18–23.
- 9 22. Hanes DS, Weir MR, Sowers JR. Gender considerations in hypertension
10 pathophysiology and treatment. *Am J Med* 1996;**101**:10S-21S.
- 11 23. Verdecchia P, Schillaci G, Gatteschi C, Zampi I, Battistelli M, Bartoccini C,
12 Porcellati C. Blunted nocturnal fall in blood pressure in hypertensive women with
13 future cardiovascular morbid events. *Circulation* 1993;**88**:986–992.
- 14 24. Bush TL, Barrett-Connor E, Cowan LD, Criqui MH, Wallace RB, Suchindran CM,
15 Tyroler HA, Rifkind BM. Cardiovascular mortality and noncontraceptive use of
16 estrogen in women: Results from the lipid research clinics program follow-up
17 study. *Obstet Gynecol Surv* 1988;**43**:480–482.
- 18 25. Bettamer Z, Elkadiki A, Alsaieiti K. Coronary angiographic characteristics of type 2
19 DM compared with nondiabetic patients in Benghazi-Libya. A cross-sectional
20 study. *Libyan J Med Sci* 2021;**5**:125.
- 21 26. Shambesh M, Emahbes T, Saleh Z, Elostas M, Shambesh I. Role of Hypertension

1 as a Major Risk Factor of Stroke in Africa; Libya: Community Based Survey. *Br J*
2 *Med Med Res* 2015;**9**:1–11.

3 27. Bakoush O, Elgzyri T. Do we have a diabetes epidemic in Libya? *Libyan J Med*
4 2006;**1**:123–125.

5 28. Altajori NN, Elshrek YM. Review Article : Risk Factors for Non-Communicable
6 Diseases in Libya. *Egypt J Hosp Med* 2017;**66**:202–214.

7

8

9

10

11

12

13

14

15

16

17

18

19

1 **Table and Figure legend**

2 **Table 1.**

3 Prevalence of risk factors stratified by modifiable and Non-modifiable risk factors. N:
4 Number of patients who have risk factors; HTN: hypertension; DM: diabetes mellitus;
5 (*): High significant different (a p-value <0.05 was considered significant); (**): Very
6 high significant different (a p-value <0.05 was considered significant).

7

8 **Figures:**

9

10 Fig 1. Effect of gender on result of C. Angio. PCI: percutaneous coronary intervention;
11 CABG: Coronary artery bypass grafting; (*): High significant different (a p-value <0.05
12 was considered significant); (**): Very high significant different (a p-value <0.05 was
13 considered significant).

14 Fig 2. Effect of age factor on result of C. Angio. PCI: percutaneous coronary
15 intervention; CABG: Coronary artery bypass grafting.

16 Fig 3. C. Angio results with different risk factors. PCI: percutaneous coronary
17 intervention; CABG: Coronary artery bypass grafting; (*): High significant different (a p-
18 value <0.05 was considered significant); (**): Very high significant different (a p-value
19 <0.05 was considered significant).

20

It is made available under a [CC-BY-NC-ND 4.0 International license](#) .

1

2

Fig 1. Effect of gender on result of C. Angio

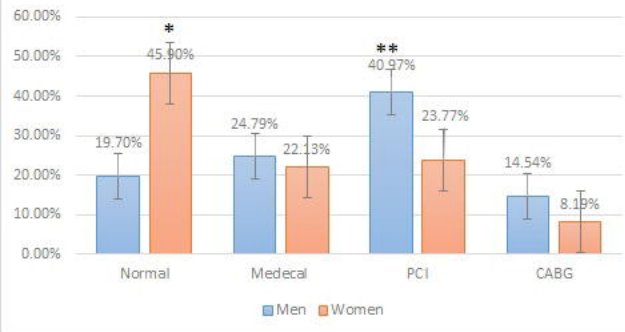


Fig 2. Effect of age factor on result of C. Angio

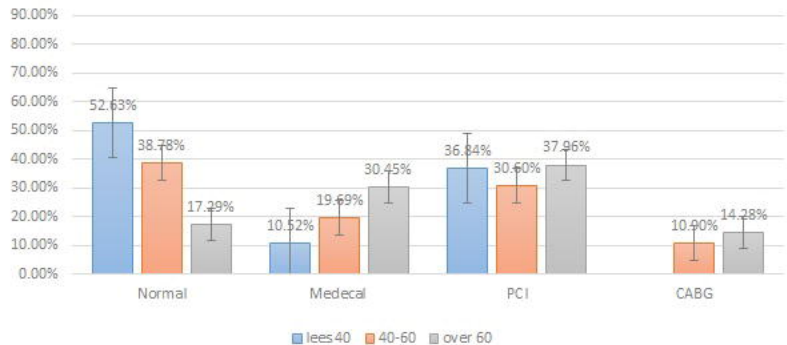


Fig 3. C. Angio results with different risk factors

