

1 C-reactive protein and lactate dehydrogenase are useful biomarkers for predicting the requirement
2 for oxygen therapy in outpatients with coronavirus disease 2019

3
4
5 Keiko Suzuki^{1*}, Takaya Ichikawa², Satoshi Suzuki¹, Yoko Tanino³, Yasutaka Kakinoki²

6
7 ¹ Department of general internal medicine, Asahikawa City Hospital, Asahikawa, Japan

8 ² Department of hematology, Asahikawa City Hospital, Asahikawa, Japan

9 ³ Department of respiratory medicine, Asahikawa City Hospital, Asahikawa, Japan

10
11 * Corresponding author:

12 E-mail: kii_suzu@yahoo.co.jp (KS)

13 Abstract

14 Background

15 It is critical for clinicians seeing outpatients with coronavirus disease 2019 (COVID-19) to
16 identify those who will require oxygen therapy after the hospital visit. Although many studies on
17 biomarkers predicting the study outcomes, including intensive care unit admission, ventilator
18 requirement, or mortality, in hospitalized patients with COVID-19 have been conducted, research on
19 biomarkers predicting the need for oxygen therapy in outpatients is sparse.

20 Methods

21 Patients with COVID-19 who visited Asahikawa City Hospital on an outpatient basis were
22 included in the study. In total, 287 new outpatients visited between April 2021 and September 2021,
23 and 142 underwent blood testing. All blood tests were performed before any treatments for COVID-
24 19 were started. Demographic information, laboratory data, and clinical treatment information were
25 extracted from the electronic medical records. Risk factors associated with oxygen therapy were
26 explored.

27 Results

28 In total, 40 of 142 patients who underwent blood testing required oxygen therapy within 7
29 days after blood samples were taken, and all other patients recovered without oxygen therapy. C-
30 reactive protein (CRP) and lactate dehydrogenase (LDH) levels were significantly higher in patients
31 who required oxygen therapy, and their cutoffs were 36 mg/L (sensitivity, 0.802; specificity, 0.725)
32 and 267 U/L (sensitivity, 0.713; specificity, 0.750), respectively. Multivariate logistic regression
33 identified age, body mass index, CRP \geq 36 mg/L, and LDH \geq 267 U/L as significant risk factors for
34 oxygen therapy.

35 Conclusion

36 This study suggests that elevated CRP and LDH levels are useful biomarkers for predicting
37 the need for oxygen therapy in outpatients with COVID-19. Further confirmatory studies are needed.

NOTE: This preprint reports new research that has not been certified by peer review and should not be used to guide clinical practice.

38 Introduction

39 Biomarkers can play a key role in decision making by physicians in daily practice for
40 patients with coronavirus disease 2019 (COVID-19) [1]. It is important for clinicians to identify
41 patients requiring hospitalization. To ensure the efficient allocation of medical resources, patients
42 who require oxygen therapy should be prioritized for hospitalization [2].

43 Vahey et al. reported that chronic hypoxemic respiratory failure with a requirement for
44 oxygen supplementation, opioid use, metabolic syndrome, obesity, age ≥ 65 years, hypertension,
45 arrhythmia, and male sex were significantly associated with the risk of hospitalization among
46 patients with COVID-19 [3].

47 Biomarkers of inflammation and coagulopathy can aid in identifying patients hospitalized
48 with COVID-19 who are at risk for clinical deterioration [4]. Poudel et al. reported that the D-dimer
49 level on admission is an accurate biomarker predicting mortality in patients with COVID-19 (1.5
50 $\mu\text{g/mL}$ is the optimal cutoff) [5]. Chang et al. reported that an elevated lactate dehydrogenase (LDH)
51 level at admission is an independent risk factor for the severity and mortality of COVID-19 [6].
52 Rahman et al. reported that C-reactive protein (CRP), D-dimer, and ferritin levels at hospital
53 admission represent simple assessment factors for COVID-19 severity [7]. The neutrophil-to-
54 lymphocyte ratio (NLR) is also mentioned to be a strong predictor of the prognosis for patients with
55 severe COVID-19 using a cutoff of 4.4 [8]. Procalcitonin may also be useful for predicting prognosis
56 [9]. Decreased albumin and globulin levels were independent factors related to oxygen therapy in
57 patients younger than 65 years who were admitted for COVID-19 [10]. However, these studies used
58 the data of patients who had been admitted to the hospital. Because LDH and CRP level change
59 during the stages of COVID-19, there appears to be no consensus regarding the biomarkers
60 predictive of prognosis among outpatients who require admission and oxygen therapy.

61 Therefore, this study analyzed the data of outpatients to identify the biomarkers predictive
62 of the need for oxygen therapy in patients with COVID-19. Additionally, we discussed the optimal
63 cutoffs of the predictive biomarkers.

64

65 Materials and methods

66 Study design and participants

67 From April 2021 to September 2021, outpatients newly diagnosed with COVID-19 who
68 visited Asahikawa City Hospital as new patients were enrolled in the study. All patients were
69 diagnosed by polymerase chain reaction for severe acute respiratory syndrome coronavirus 2 (SARS-
70 CoV-2) genes and/or antigen quantitation testing.

71 The endpoint of this study was the requirement for oxygen therapy, which was definitely
72 administered to patients with percutaneous oxygen saturation levels of $\leq 92\%$.

73 **Ethics**

74 This study was approved by the ethics committee of Asahikawa City Hospital and
75 conducted in accordance with the ethical standards set forth in the Declaration of Helsinki (1983).
76 The opt-out method was used to obtain patient consent in this study.

77 **Data collection**

78 All demographic, clinical, and outcome data were retrospectively extracted from the
79 Asahikawa City Hospital record files. The demographic characteristics of the patients (age, sex, body
80 mass index [BMI]); white blood cell count (WBC); NLR; LDH, aspartate aminotransferase (AST),
81 alanine aminotransferase (ALT), D-dimer, and ferritin levels; comorbidities, and clinical courses were
82 recorded. The time from the onset of symptoms to blood sampling was also recorded. All blood
83 samples were taken before patients received any treatment for COVID-19.

84 ***Statistical analysis***

85 Continuous data were analyzed using the Mann–Whitney U test and presented as the mean
86 (interquartile range). For categorical variables, Fisher’s exact test or the chi-squared test was used, as
87 appropriate. The receiver operating characteristic (ROC) curve, sensitivity, specificity, and area
88 under the curve (AUC) were measured to evaluate the levels of laboratory indicators predicting the
89 need for oxygen therapy. We considered that the best cutoff was near the shoulder of the ROC curve
90 because as the sensitivity is progressively increased, there is little or no loss in specificity until
91 extremely high levels of sensitivity are achieved. The cumulative probability that patients with
92 COVID-19 would not require oxygen therapy was described via Kaplan–Meier analysis and
93 analyzed using log-rank test. Patients who required oxygen therapy started this treatment within 7
94 days after blood sampling, and thus, the analysis was performed within 8 days (follow-up time) after
95 blood sampling.

96 Multivariate logistic analysis was used to exploit the risk factors for oxygen therapy. $P <$
97 0.05 was considered statistically significant. Statistical analysis was performed using BellCurve for
98 Excel by Social Survey Research Information Co. Ltd and EZR by Saitama Medical Center, Jichi
99 Medical University, Saitama, Japan, which is a 120 graphical user interface for R (The R Foundation
100 for Statistical Computing, Vienna, 121 Austria) [11].

101

102 **Results**

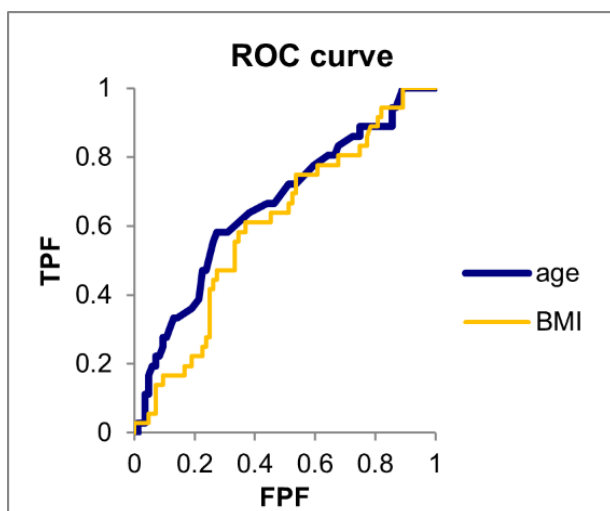
103 **Characteristics**

104 In total, 287 outpatients who visited Asahikawa City Hospital for the first time were eligible
105 for the study. We excluded five patients who were admitted to other hospitals after they visited our
106 hospital because the clinical course data were missing.

107 We divided the patients into two groups according to the need for oxygen therapy. S1 Table
108 presents the characteristics of the 282 outpatients included in the study. Among the included patients,
109 142 received blood tests before any treatment for COVID-19 was started. All blood samples were
110 collected at the outpatient setting. In total, 138 patient samples were collected at the first visit to our
111 hospital's outpatient unit. Four patient samples were collected at the second or third visit. Table 1
112 presents the characteristics of 142 patients who underwent blood testing. Details of their
113 comorbidities are presented in S2 Table. Forty patients required oxygen therapy, and the remaining
114 patients recovered without oxygen therapy. The median patient age was 55 (45.5–72.25) years
115 among those requiring oxygen therapy, versus 44.5 (34.3–52.8) years among those who did not
116 require oxygen therapy ($P < 0.001$). The proportions of males among patients who did and did not
117 receive oxygen therapy were 57.8% and 57.5% ($P > 0.999$), respectively. No significant difference
118 was found in BMI, smoking history, receipt of SARS-CoV-2 vaccines, comorbidities, and the time
119 from onset between the patients who did and did not require oxygen therapy. The ROC curves of
120 BMI and age distinguishing the need for oxygen therapy are presented in Fig 1, and the AUCs of age
121 and BMI were 0.699 (0.603–0.795) and 0.604 (0.496–0.713), respectively. The optimal cutoffs of
122 BMI and age were 25.2 kg/m² and 52 years, respectively. The sensitivity and specificity of BMI were
123 0.611 and 0.619, respectively, and those of age were 0.625 and 0.922, respectively.

124

125 **Fig 1. ROC curves of BMI and age distinguishing the need for oxygen therapy**



126

127 **Laboratory findings**

128 In patients requiring oxygen therapy, higher WBC (5315/μL [4157.5–9920] vs. 4550/μL
129 [3817.5–5460]/μl, $P = 0.049$), higher NLR (4.74 [3.87–7.39] vs. 2.81 [1.94–4.64], $P < 0.001$), higher
130 LDH (313 U/L [264–415] vs. 221 U/L [188–986], $P < 0.001$), higher CRP (62.9 mg/L [31.6–97.5] vs.
131 19.6 mg/L [6.6–32.1], $P < 0.001$), higher ferritin (465.8 ng/mL [214.6–847.0] vs. 249.7 ng/mL
132 [105.5–450.4], $P = 0.004$), and higher D-dimer (1.0 μg/mL [0.55–1.20] vs. 0.3 μg/mL [0.20–0.78], P
133 < 0.001) were found. ALT levels did not differ between the groups (39.0 U/L [28.55–56.5] vs. 28.5

134 U/L [22.0–35.75], P = 0.462). We selected WBC, NLR, CRP, AST, and LDH as potential biomarkers
 135 predicting the need for oxygen therapy, whereas ferritin and D-dimer were excluded because these
 136 data were missing for 14.7% of patients.

137 **Table 1. Characteristics of 142 outpatients who underwent blood testing**

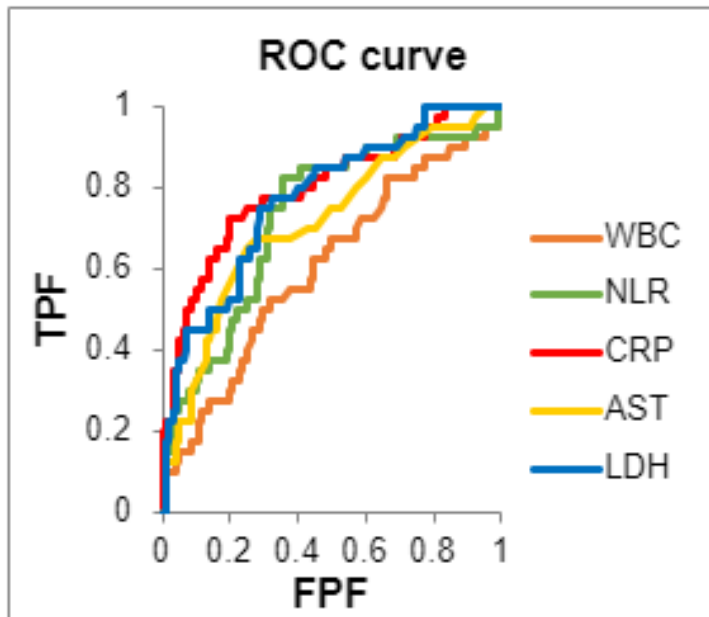
	No oxygen therapy (n = 102)	Oxygen therapy (n = 40)	P
Demographics			
Male (%)	59 (57.8%)	23 (57.5%)	1
Age (years), median (IQR)	44.5 (34.3–52.8)	55 (45.5–72.25)	<0.001*
BMI, median (IQR) (missing: 28.7%)	23.9 (21.5–27.3)	25.7 (23.1–28.6)	0.071
Smoking, yes (%) (missing: 33.7%)	46 (47.4%)	20 (50%)	0.852
SARS-CoV-2 vaccines, yes (%)	4 (3.9%)	3 (7.5%)	0.402
Comorbidities (%)	40 (39.2%)	21 (52.5%)	0.211
Time from onset (days), median (IQR)	5 (3–7)	6 (3–7.5)	0.577
Laboratory findings			
WBC, mean (IQR)	4550 (3817.5–5460)	5315 (4157.5–9920)	0.049*
Neutrophil-to-lymphocyte ratio, mean (IQR)	2.81 (1.94–4.64)	4.74 (3.87–7.39)	<0.001*
AST, mean (IQR)	28.5 (22.0–35.75)	39.0 (28.5–56.5)	<0.001*
ALT, mean (IQR)	23.0 (15.25–44.5)	25.5 (17.0–39.25)	0.462
LDH, mean (IQR) (missing: 0.7%)	221 (188–986)	313 (264–415)	<0.001*
Ferritin, mean (IQR) (missing: 14.7%)	249.7 (105.5–450.4)	465.8 (214.6–847.0)	0.004*
D-dimer, mean (IQR) (missing: 14.7%)	0.3 (0.20–0.78)	1.0 (0.55–1.20)	<0.001*
CRP, mean (IQR)	1.96 (0.66–3.21)	6.29 (3.16–9.75)	<0.001*

138 *Significant at P < 0.05

139 The ROC curves of WBC, NLR, CRP, AST, and LDH in distinguishing the need for oxygen
 140 therapy are presented in Fig 2. Table 2 presents the AUC, P-value, cutoff, sensitivity, and specificity
 141 of each variable. The AUCs of WBC, NLR, CRP, AST, and LDH for predicting the need for oxygen
 142 therapy were 0.604, 0.730, 0.799, 0.716, and 0.774, respectively. The optimal cutoffs of WBC, NLR,
 143 CRP, AST, and LDH were 5270/ μ L, 3.546, 36 mg/L, 35 U/mL, and 267 U/mL, respectively. The
 144 respective sensitivity and specificity of these variables were as follows: WBC, 0.683 and 0.525;
 145 NLR, 0.644 and 0.825; CRP, 0.802 and 0.725; AST, 0.723 and 0.675; and LDH, 0.713 and 0.750.
 146 There was no significant difference in AUC among CRP, LDH, NLR, and AST, whereas that of WBC
 147 was significantly lower than those of the other variables (P < 0.05). We selected CRP and LDH for
 148 further analysis because they had higher AUCs than the variables and they are routinely used in daily
 149 practice.

150

151 **Fig 2. ROC curves of WBC, NLR, CRP, AST, and LDH in distinguishing the need for oxygen**
 152 **therapy**

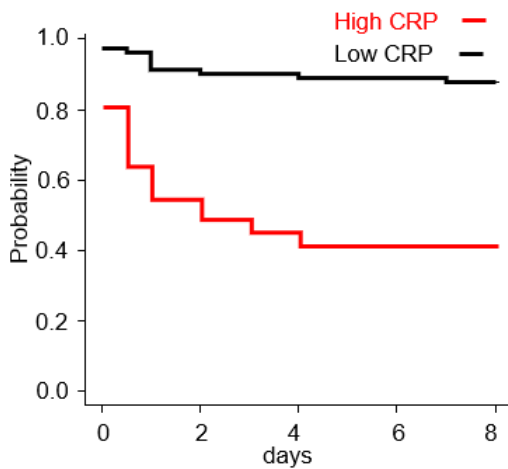


153 **Table 2. The AUC (95% confidence interval [CI]), P-value, cutoff, sensitivity, and specificity**
 154 **of WBC, NLR, CRP, AST, and LDH in predicting the need for oxygen therapy**
 155

	AUC	95% CI	P	Cutoff	Sensitivity	Specificity
WBC	0.604	0.497–0.711	0.056	5270/ μ L	0.683	0.525
NLR	0.730	0.635–0.825	<0.001*	3.546	0.644	0.825
CRP	0.799	0.711–0.886	<0.001*	36 mg/L	0.802	0.725
AST	0.716	0.618–0.813	<0.001*	35 U/mL	0.723	0.675
LDH	0.7743	0.689–0.856	<0.001*	267 U/mL	0.713	0.750

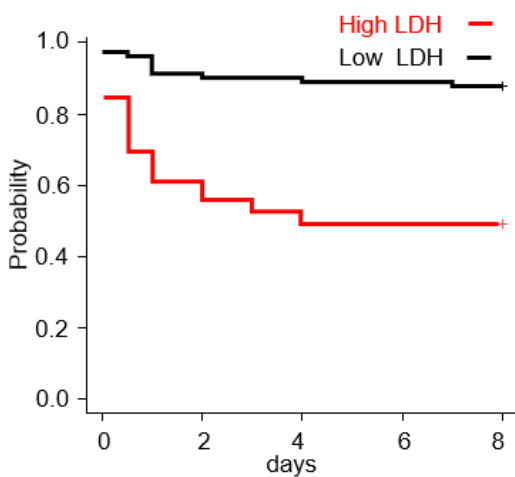
156
 157 All patients in the oxygen therapy group started therapy within 7 days of blood testing. The
 158 Kaplan–Meier distributions revealed a significant difference in the rates of oxygen therapy between
 159 low (<35 mg/L and high (\geq 35 mg/L) CRP levels (log-rank $P < 0.001$, Fig 3) and between low (<267
 160 U/L) and high (\geq 267 U/L) LDH levels (log-rank $P < 0.001^*$, Fig 4).
 161

162 **Fig 3. Kaplan–Meier estimates of the cumulative probability that patients with COVID-19**
163 **would require oxygen therapy according to plasma CRP < 36 mg/L vs. CRP ≥ 36 mg/L**



164

165 **Fig 4. Kaplan–Meier estimates of the cumulative probability that patients with COVID-19**
166 **would require oxygen therapy according to plasma LDH < 267 U/L vs. LDH ≥ 267 U/L**



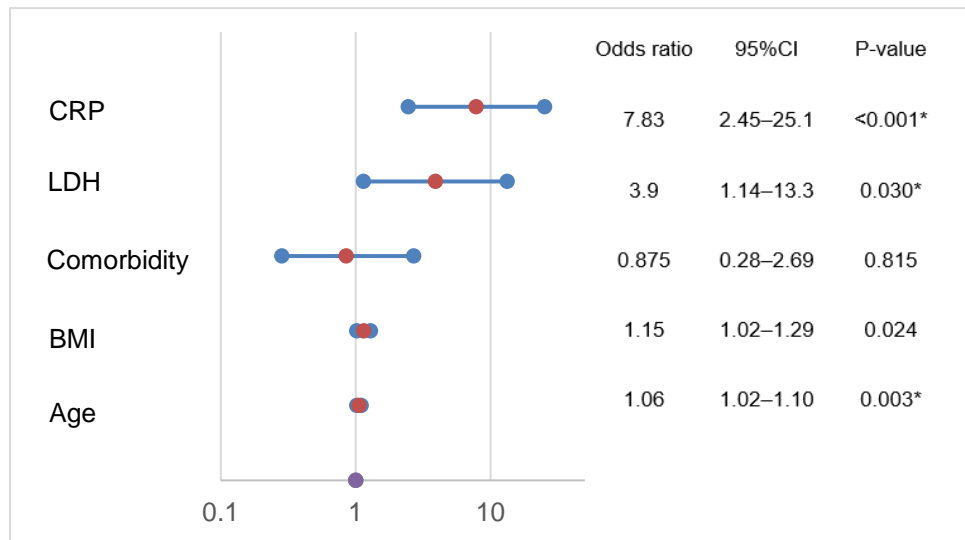
167

168 The results of multivariate logistic regression analysis for predicting the need for oxygen
169 therapy according to age, BMI, CRP ≥ 36 mg/L, LDH ≥ 267 U/mL, and comorbidities are presented
170 in Fig 5. Age, BMI, CRP, and LDH were predictive of a significantly higher need for oxygen therapy
171 with odds ratios (95% CIs) of 1.06 (1.02–1.10), 1.15 (1.02–1.29), 7.83 (2.45–25.1), and 3.9 (1.14–
172 13.3), respectively (Fig 5).

173

174

175 **Fig 5. Odds ratios and 95% CIs of age, BMI, CRP, and LDH (multivariate logistic regression**
 176 **analysis)**



177

178 Discussion

179 This study aimed to identify useful laboratory findings predicting the need for oxygen
 180 therapy among outpatients with COVID-19. Our results suggest that $CRP \geq 36$ mg/L and $LDH \geq 267$
 181 U/L are predictive of the need for oxygen therapy among outpatients with COVID-19. CRP and LDH
 182 are widely used and inexpensive to measure. Therefore, our findings will help physicians during the
 183 management of COVID-19 by indicating the need for frequent follow-up or therapies to avoid poor
 184 prognoses.

185 Excessive inflammation is considered the main cause of critical illness and death in patients
 186 with COVID-19 [12]. CRP levels are obviously increased in the presence of acute inflammation, and
 187 they might normalize after inflammation subsides [12]. CRP levels in the early stage of COVID-19
 188 have been reported to be positively correlated with the presence of lung lesions [13]. During the
 189 process of COVID-19 pneumonia, a cytokine response storm can be triggered, which is associated
 190 with high mortality in COVID-19 [14]. Because the CRP level varies by stage of inflammation, the
 191 CRP cutoff predicting severity should change according to the stage. $CRP \geq 110$ mg/L is associated
 192 with moderate-to-severe acute respiratory distress syndrome in patients with COVID-19 [15].
 193 Patients with $CRP > 64.75$ mg/L on admission were more likely to have severe complications of
 194 COVID-19 [16]. Stringer et al. reported that a CRP cutoff of ≥ 40 mg/L on admission was a good
 195 indicator of mortality in patients with COVID-19 [17]. These previous studies focused on CRP levels
 196 at admission to predict disease severity. Our study therefore provides useful information by
 197 suggesting a CRP cutoff of ≥ 36 mg/L for identifying outpatients who will require oxygen therapy.

198 LDH is an inflammatory marker that may serve as a common indicator of acute or severe
 199 tissue damage [18]. Cytokine-mediated lung tissue damage, which is a primary feature of COVID-
 200 19, may be responsible for the elevated release of LDH [19]. $LDH \geq 450$ U/L on hospitalization was

201 associated with moderate-to-severe acute respiratory distress syndrome in patients with COVID-19
202 [15]. Li et al. reported that LDH levels of ≥ 359.5 and ≥ 277 U/L at admission was associated with
203 death and severe COVID-19, respectively [6]. Although this report used the serum LDH level at
204 admission, the result was similar to those of our study, which suggested that $\text{LDH} \geq 267$ U/L in
205 outpatients with COVID-19 was predictive of the need for oxygen therapy. Additionally, in
206 multivariate analysis, serum $\text{LDH} \geq 267$ U/mL remained an independent risk factor for oxygen
207 therapy in our study, in line with the results of Li et al.

208 Our findings suggest that both $\text{CRP} \geq 36$ mg/L and $\text{LDH} \geq 267$ U/L are useful for
209 identifying patients who will require oxygen support in the near future, and there was no statistical
210 difference in the AUC between these variables. Both parameters are easy to measure and routinely
211 used in clinical practice. We used patients' samples obtained at their visits, and the samples were
212 obtained a median of 5 days after symptom onset in the nonoxygen therapy group and a median of 6
213 days in the oxygen therapy group. Meanwhile, patients who needed oxygen support started within 7
214 days of blood sampling. Because LDH and CRP levels exhibit dynamic changes during the
215 progression of COVID-19, the interval from symptom onset to blood testing should be considered
216 when physicians devise patients' treatment strategies.

217 In this study, BMI, age, and comorbidities were also analyzed in a multivariate regression
218 model because they are well-known prognostic factors for COVID-19. The US Food and Drug
219 Administration published criteria for the use of monoclonal antibodies to treat or prevent SARS-
220 CoV-2 in consideration of risk factors including older age (≥ 65 years), obesity ($\text{BMI} > 25$ kg/m² in
221 adults), pregnancy, and comorbidities such as chronic kidney disease, diabetes, and chronic lung
222 disease [20]. $\text{BMI} > 25$ kg/m² was similar to our cutoff of 25.2 kg/m², but the number the cases was
223 limited in our analysis. However, our analysis assessed all comorbidities collectively because we did
224 not have sufficient numbers of participants to analyze comorbidities separately. The criteria of the
225 Japanese Ministry of Health, Labour and Welfare indicated that patients younger than 50 years are
226 eligible for monoclonal antibody therapy as high-risk patients [21]. Our age cutoff of 52 years was
227 similar to these criteria. Yamada et al. created a clinical score for evaluating the need for
228 hospitalization based on age, sex (male), BMI, medical history, and symptoms [2]. Although such
229 information is helpful, it is sometimes difficult to precisely predict the prognosis of COVID-19 in
230 daily practice.

231 Regarding study limitations, the number of cases was limited, and this study was performed
232 retrospectively at a single hospital. Only some patients underwent blood testing at their visit based on
233 the judgment of the physicians. Only 4.93% of patients received SARS-CoV-2 vaccines in this study,
234 and the cutoffs might differ according to the receipt of vaccination. Ferritin and d-dimer levels also
235 significantly differed between patients who did and did not receive oxygen therapy; however, the
236 physicians did not measure these parameters in 14.7% of patients. Because all patients were
237 ethnically Japanese, the results should be verified in other populations. Further studies are needed to
238 confirm our findings.

239 In conclusion, our data suggest that CRP and LDH are useful biomarkers for predicting the
240 need for oxygen therapy among outpatients with COVID-19. Further clinical studies are necessary to
241 confirm our findings.
242

243 Acknowledgments

244 The authors thank all the participating physicians and other medical staffs for their care of
245 patients with COVID-19.
246 COVID-19 medical team: Ai Nakamura, Akihito Tampo, Akiko Irie, Akito Uehara, Hidemitsu
247 Sakagami, Kae Takahashi, Kazuki Yamada, Masahide Nakajima, Seisuke Saito, Shin Kukita, Shohei
248 Kuroda, Roku Sato, Yuji Naito, Yuuki Nagasima
249

250 Author contributions

251 **Conceptualizations:** Keiko Suzuki, Takaya Ichikawa, Satoshi Suzuki, Yoko Tanino, Yasutaka
252 Kakinoki

253 **Data curation:** Keiko Suzuki

254 **Formal analysis:** Keiko Suzuki

255 **Methodology:** Keiko Suzuki, Takaya Ichikawa, Yasutaka Kakinoki

256 **Supervision:** Yasutaka Kakinoki

257 **Resources:** Keiko Suzuki, Takaya Ichikawa, Satoshi Suzuki, Yoko Tanino

258 **Writing (original draft preparation):** Keiko Suzuki

259 **Writing (review and editing):** Keiko Suzuki, Takaya Ichikawa, Satoshi Suzuki, Yoko Tanino,
260 Yasutaka Kakinoki
261

262 References

- 263 1. Tabassum T, Rahman A, Araf Y, Ullah MA, Hosen MJ. Prospective selected biomarkers in
264 COVID-19 diagnosis and treatment. *Biomark Med.* 2021;15: 1435-1449. doi:
265 <http://doi.org/10.2217/bmm-2021-0038> PMID: 34538093
- 266 2. Yamada G, Hayakawa K, Matsunaga N, Terada M, Suzuki S, Asai Y, et al. Predicting respiratory
267 failure for COVID-19 patients in Japan: a simple clinical score for evaluating the need for
268 hospitalisation. *Epidemiol Infect.* 2021;149: e175(19). doi:
269 <https://doi.org/10.1017/S0950268821001837>
- 270 3. Vahey GM, McDonald E, Marshall K, Martin SW, Chun H, Herlihy R, et al. Risk factors for
271 hospitalization among persons with COVID-19-Colorado. *PLoS One.* 2021;16: e0256917. doi:
272 <https://doi.org/10.1371/journal.pone.0256917> PMID: 34473791
- 273 4. Ayanian S, Reyes J, Lynn L, Teufel K. The association between biomarkers and clinical outcomes

- 274 in novel coronavirus pneumonia in a US cohort. *Biomark Med.* 2020;14: 1091-1097. doi:
275 <https://doi.org/10.2217/bmm-2020-0309>. PMID: 32677844
- 276 5. Poudel A, Poudel Y, Adhikari A, Aryal BB, Dangol D, Bajracharya T, et al. D-dimer as a
277 biomarker for assessment of COVID-19 prognosis: D-dimer levels on admission and its role in
278 predicting disease outcome in hospitalized patients with COVID-19. *PLoS One.* 2021;16: e0256744.
279 doi: <https://doi.org/10.1371/journal.pone.0256744>. PMID: 34437642
- 280 6. Li C, Ye J, Chen Q, Hu W, Wang L, Fan Y, et al. Elevated lactate dehydrogenase (LDH) level as an
281 independent risk factor for the severity and mortality of COVID-19. *Aging.* 2020;12: 15670-15681.
282 doi: <https://doi.org/10.18632/aging.103770>. PMID: 32805722
- 283 7. Rahman MA, Shanjana Y, Tushar MI, Mahmud T, Rahman GMS, Milan ZH, et al. Hematological
284 abnormalities and comorbidities are associated with COVID-19 severity among hospitalized patients:
285 Experience from Bangladesh. *PLoS One.* 2021;16: e0255379. doi:
286 <https://doi.org/10.1371/journal.pone.0255379>. PMID: 34314447
- 287 8. Kilercik M, Demirelce Ö, Serdar MA, Mikailova P, Serteser M. A new haematocytometric index:
288 Predicting severity and mortality risk value in COVID-19 patients. *PLoS One.* 2021;16: e0254073.
289 doi: <https://doi.org/10.1371/journal.pone.0254073>. PMID: 34351940
- 290 9. Hu R, Han C, Pei S, Yin M, Chen X. Procalcitonin levels in COVID-19 patients. *Int J Antimicrob*
291 *Agents.* 2020;56: 106051. doi: <https://doi.org/10.1016/j.ijantimicag.2020.106051>. PMID: 32534186
- 292 10. Ni YN, Wang T, Liang BM, Liang ZA. The independent factors associated with oxygen therapy
293 in COVID-19 patients under 65 years old. *PLoS One.* 2021;16: e0245690. doi:
294 <https://doi.org/10.1371/journal.pone.0245690>. PMID: 33481912
- 295 11. Kanda Y. Investigation of the freely available easy-to-use software 'EZR' for medical statistics.
296 *Bone Marrow Transplant.* 2013;48: 452-458. doi: <https://doi.org/10.1038/bmt.2012.244>. PMID:
297 23208313
- 298 12. Luan YY, Yin CH, Yao YM. Update advances on C-reactive protein in COVID-19 and other viral
299 infections. *Front Immunol.* 2021;12: 720363. doi: <https://doi.org/10.3389/fimmu.2021.720363>.
300 PMID: 34447386
- 301 13. Wang L. C-reactive protein levels in the early stage of COVID-19. *Med Mal Infect.* 2020;50:
302 332-334. <https://doi.org/10.1016/j.medmal.2020.03.007>. PMID: 32243911
- 303 14. Azar MM, Shin JJ, Kang I, Landry M. Diagnosis of SARS-CoV-2 infection in the setting of the
304 cytokine release syndrome. *Expert Rev Mol Diagn.* 2020;20: 1087-1097. doi:
305 <https://doi.org/10.1080/14737159.2020.1830760>. PMID: 32990479
- 306 15. Poggiali E, Zaino D, Immovilli P, Rovero L, Losi G, Dacrema A, et al. Lactate dehydrogenase
307 and C-reactive protein as predictors of respiratory failure in CoVID-19 patients. *Clin Chim Acta.*
308 2020;509: 135-138. doi:
309 <https://doi.org/10.1016/j.cca.2020.06.012>. PMID: 32531257
- 310 16. Sadeghi-Haddad-Zavareh M, Bayani M, Shokri M, Ebrahimpour S, Babazadeh A, Mehraeen R,
311 et al. C-reactive protein as a prognostic indicator in COVID-19 patients. *Interdiscip Perspect Infect*

- 312 Dis. 2021: 5557582. doi: <https://doi.org/10.1155/2021/5557582>. PMID: 33968148
- 313 17. Stringer D, Braude P, Myint PK, Evans L, Collins JT, Verduri A, et al. The role of C-reactive
314 protein as a prognostic marker in COVID-19. *Int J Epidemiol.* 2021;50: 420-429. doi:
315 <https://doi.org/10.1093/ije/dyab012>. PMID: 33683344
- 316 18. Sepulveda JL. Challenges in routine clinical chemistry analysis: proteins and enzymes. In:
317 *Accurate results in the clinical laboratory 2019*. Pp. 141-163. doi: [https://doi.org/10.1016/B978-0-12-](https://doi.org/10.1016/B978-0-12-813776-5.00010-8)
318 [813776-5.00010-8](https://doi.org/10.1016/B978-0-12-813776-5.00010-8)
- 319 19. Martinez-Outschoorn UE, Prisco M, Ertel A, Tsirigos A, Lin Z, Pavlides S, et al. Ketones and
320 lactate increase cancer cell “stemness,” driving recurrence, metastasis and poor clinical outcome in
321 breast cancer: achieving personalized medicine via Metabolo-Genomics. *Cell Cycle.* 2011;10: 1271-
322 1286. doi: <https://doi.org/10.4161/cc.10.8.15330>. PMID: 21512313
- 323 20. US Food and Drug Administration. Fact Sheet for Health Care Providers: Emergency Use
324 Authorization (EUA) of REGEN-COV (Casirivimab with Imdevimab). [Cited 2021 November 16].
325 Available from: <https://www.fda.gov/media/145611/download>
- 326 21. Shingata Korona Uirus Kansensho no tebiki dai 6 han. Japanese Ministry of Health, Labour and
327 Welfare. [Cited 2021 November 16]
328 Available from: <https://www.mhlw.go.jp/content/000851082.pdf> (Japanese)
329