

1 **A cohort study on the duration of Plasmodium falciparum infections during the dry**  
2 **season in The Gambia**

3

4 **Authors:**

5 Katharine A Collins<sup>1</sup>, Sukai Ceesay<sup>2</sup>, Sainabou Drammeh<sup>2</sup>, Fatou K Jaiteh<sup>2</sup>, Marc-Antoine Guery<sup>3</sup>, Kjerstin  
6 Lanke<sup>1</sup>, Lynn Grignard<sup>4</sup>, Will Stone<sup>4</sup>, David J Conway<sup>4</sup>, Umberto D'Alessandro<sup>2</sup>, Teun Bousema<sup>1,4#</sup>, Antoine  
7 Claessens<sup>2,3#</sup>

8 **Affiliations:**

9 <sup>1</sup>Radboud university medical center, Radboud Institute for Health Sciences, Department of Medical  
10 Microbiology, Nijmegen, The Netherlands

11 <sup>2</sup>Medical Research Council Unit The Gambia at the London School of Hygiene and Tropical Medicine, Banjul,  
12 The Gambia

13 <sup>3</sup> LPHI, MIVEGEC, Université de Montpellier, CNRS, INSERM, Montpellier, France

14 <sup>4</sup>Department of Infection Biology, London School of Hygiene and Tropical Medicine, London, UK

15 # These authors contributed equally to this work

16 **Corresponding author details:** Teun.Bousema@Radboudumc.nl, Radboudumc, Nijmegen, The Netherlands,  
17 +31 0687532739

18 **Alternate corresponding author details:** antoine.claessens@umontpellier.fr

19

## 20 **Abstract**

21 **Background:** In areas where *Plasmodium falciparum* malaria is highly seasonal, a dry season reservoir of  
22 blood-stage infection is essential for initiating transmission during the following wet season, bridging  
23 transmission seasons several months apart. Understanding infections during the dry season could thus  
24 inform approaches for malaria control.

25 **Methods:** In The Gambia, a cohort of 42 individuals with qPCR positive *P. falciparum* infections at the end  
26 of the transmission season (December) were followed monthly until the end of the dry season (May) to  
27 evaluate the duration of detectable infections. The influence of human host (age, sex, haemoglobin  
28 concentration and genotype, and *P. falciparum*-specific antibodies), and parasitological (parasite density,  
29 gametocyte density and genotypic multiplicity of infection) factors was investigated.

30 **Results:** A large proportion of individuals infected at the end of the wet season had detectable infections  
31 until the end of the dry season (40.0%; 16/40), with the majority of these infections also harbouring  
32 gametocytes (81.3%; 13/16). 22 infections were classified as persistent (detectable for at least 3 months),  
33 17 were classified as short-lived (undetectable within 2 months), and 3 were treated (due to symptoms). At  
34 the start of the dry season, the majority of persistent infections (82%; 18/22) had parasite densities >10  
35 p/μL compared to only 5.9% (1/17) of short-lived infections. Persistent infections (59%; 13/22) were also  
36 more likely to be multi-clonal than short-lived infections (5.9%; 1/17), they were most common in 5 to 15  
37 year old children (63%; 12/19), and were associated with individuals having higher levels of *P. falciparum*-  
38 specific antibodies ( $p = 0.058$ ).

39 **Conclusions:** Asymptomatic persistent dry season infections in The Gambia were multiclonal with higher  
40 parasite densities at the beginning of the dry season, mostly occurring in school age children and adults  
41 with higher *P. falciparum*-specific antibodies. Screening and treating asymptomatic, malaria-infected  
42 individuals during the dry season may reduce the human reservoir of malaria responsible initiating  
43 transmission in the wet-season.

44

45 **Keywords:** *Plasmodium falciparum*, Malaria, transmission, dry season, multiplicity of infection,

46

47

## 48 Introduction

49 In many endemic areas, malaria transmission is seasonal, with most clinical cases occurring during the wet  
50 season. *Plasmodium falciparum* infections acquired during this period can persist in asymptomatic  
51 individuals throughout the dry season, and if they produce gametocytes, can potentially contribute to  
52 transmission at the start of the next wet season, bridging transmission seasons several months apart [1-3].  
53 These clinically silent infections can persist for many months or even years without treatment [2], and pose  
54 a significant hurdle for malaria elimination efforts [4]. Understanding how long infections persist in the dry  
55 season in The Gambia and identifying who carries them could inform targeted approaches to reduce the  
56 dry season reservoir of malaria and reduce re-introduction of malaria in the subsequent wet season.

57 Few studies have described in detail the asymptomatic dry season reservoir of malaria and the related  
58 parasite and host factors. Duration of *P. falciparum* infection varies by setting, with asymptomatic,  
59 genetically complex infections being more common in high transmission areas [5], but even in low  
60 transmission settings infections are known to persist for months or even years [6, 7]. The host specific  
61 response to malaria infection may play an important role by allowing the establishment of chronic  
62 infections. Protection against severe malaria is acquired very quickly, often after a single infection [8, 9],  
63 but the ability to control parasitemia at a sub-clinical level develops more slowly with age, following  
64 repeated exposure [10]. In Mali, individuals infected during the dry season had higher *P. falciparum*-specific  
65 antibodies and memory B cells than those who were uninfected [11, 12], and older children were more  
66 likely to be infected at the end of the dry season than younger children [13]. Both findings support the  
67 hypothesis that a certain degree of exposure and immunity (acquired with increasing age) is required to be  
68 asymptotically infected. Interestingly, in Uganda, older children carried infections for a longer time than  
69 children under 5 and adults [14], suggesting host immunity may peak or plateau at a certain age, or there  
70 may be different mechanisms involved as immunity develops. The type of immune response associated  
71 with persistent asymptomatic infection may differ from that able to clear an infection, and this may also  
72 vary by age and exposure [15]. Moreover, it is unclear when parasite specific antibody responses contribute  
73 to protection [16, 17] or are simply markers of previous exposure [18]. In a recent study, responses to a  
74 panel of *P. falciparum* antigens indicated a higher level of immunity that allowed individuals to control  
75 blood-stage infections following controlled exposure to *P. falciparum* sporozoites [19]. Other host factors  
76 may also play an important role in the establishment of chronic asymptomatic infections. In Uganda,  
77 infections persisted longer in males than females, suggesting sex-specific differences in the host response  
78 may influence the duration of parasite carriage [14]. Host factors such as haemoglobinopathies [20] and  
79 anaemia [21] are known to be associated with the risk and severity of malaria, and may also be important  
80 factors in the duration of asymptomatic carriage [22].

81 Besides host factors related to chronic infections, parasites themselves may either be pre-programed or  
82 adapted to persist throughout the dry, non-transmission season. Being able to establish a clinically silent  
83 infection that does not activate the immune system may result in a slower clearance rate, a plausible  
84 evolutionary strategy for surviving the dry season and ensuring onward transmission. In Mali, where  
85 malaria transmission is highly seasonal, parasite populations collected during the wet and dry seasons were  
86 similar. Nevertheless, parasites sampled in the dry season appeared to adapt their phenotype, resulting in a  
87 longer time in peripheral circulation with increased splenic clearance, potentially a strategy to maintain a  
88 clinically and immunologically silent low parasitemia [11]. In this study, we identified individuals infected at  
89 the end of the transmission season in The Gambia, determined the duration of these infections during the  
90 dry season, and explored the related host and parasite factors.

91

## 92 **Methods**

### 93 **Study design**

94 Climate in The Gambia is characterised by a short rainy season and a long dry season. Malaria transmission  
95 follows the same pattern, starting in July or August and lasting until December, with little or no clinical  
96 cases during the dry season. In December 2016, all residents of four villages (Madina Samako, Sendebu,  
97 Njayel, Karanbada) located within 5Km of each other in the Upper River Region, eastern Gambia, had a  
98 finger prick blood sample collected and analysed by VarATS quantitative PCR (qPCR) for *P. falciparum*  
99 infection. qPCR-positive individuals were invited for monthly samplings (venous blood draw of 5 to 8mL),  
100 with qPCR and qRT-PCR performed from the end of December until the end of the dry season (May), or  
101 until they either, (i) they became symptomatic and received treatment immediately, (ii) cleared their  
102 infection (negative by qRT-PCR and/or VarATS qPCR two months in a row), or (iii) withdrew from the study  
103 (Figure 1a). Subjects with an axillary temperature greater than 37.5°C were screened with a rapid  
104 diagnostic test (CareStart) and positives were treated with artemether-lumefantrine, the first line  
105 treatment in The Gambia. Written informed consent was obtained from all participants; parents or legal  
106 guardians provided a written informed consent for minors (<18 years old). The study was approved by the  
107 Gambia Government/Medical Research Council Joint Ethics Committee (SCC 1318, L2014.67, SCC 1472).

### 108 **Molecular detection of parasites**

109 During the study, presence of *P. falciparum* was assessed using VarATS qPCR as described in [23] from  
110 fingerprick (start December screening) or venous blood samples (monthly end December to May). The  
111 parasite stages were determined by qRT-PCR assays specific for ring stage parasites (*sbp-1*), male  
112 gametocytes (*PfMGET*), or female gametocytes (*CCp4*) [24]. Samples were genotyped using *P. falciparum*  
113 merozoite surface protein 2 (*mSP2*) [25]. Briefly, nucleic acid was extracted from 100 µl whole blood and 5  
114 µl was used in a nested PCR specific for *mSP2* 3D7 and FC27 allelic families followed by capillary  
115 electrophoresis to determine allelic size polymorphisms. Secondary PCR products were run on a 2% w/v  
116 agarose gel to check for bands within the correct size range (193 to 506 bp). Secondary PCR products were  
117 diluted and 2.5 µl per sample processed on an ABI 7500 fast (Applied Biosystem, UK) and resulting  
118 chromatograms analyzed using PeakScanner® software version 2 (Applied Biosystems). To distinguish  
119 between true peaks and background signal or stutter peaks, a cutoff of 200 relative fluorescent units (RFUs)  
120 was applied and fragment sizes must differ by more than 3 bp.

### 121 **Haemoglobin quantification and genotyping**

122 Haemoglobin density was measured in December using a haemoglobin analyser (HemoCue; AB Leo  
123 Diagnostics, Helsingborg, Sweden). Human haemoglobin S (HBs) and C (HBc) were genotyped using  
124 previously published methods [26].

## 125 **Luminex**

126 IgG antibodies against 17 *P. falciparum* antigens were quantified at baseline for each participant using a  
127 Luminex MAGPIX® suspension bead array [27]: Circumsporozoite protein (CSP), Erythrocyte binding  
128 antigen (EBA140, EBA175 and EBA181); Glutamate rich protein 2 (GLURP-R2); Merozoite surface protein 1-  
129 19 (MSP1-19), Merozoite surface protein 2 (MSP2-ch150/9 [3D7 family allele] and MSP2-DD2 [FC27 family  
130 allele]); Apical membrane antigen 1 (AMA1), Reticulocyte binding protein homologue (RH2.2, RH4.2,  
131 RH5.1), Schizont egress antigen-1 (SEA1) , Heat shock protein 40 (HSP40), Skeleton-binding protein 1  
132 (SBP1), and Early transcribed membrane proteins 4 (ETRAMP4 Ag2) and 5 (ETRAMP5 Ag1). Full details of all  
133 antigens are in supplementary table 1. These antigens are wither expressed during the asexual blood-stage  
134 (Etramp, PfSEA, HSP40, SBP1), involved in merozoite invasion (Rh, AMA1, EBA, MSP, GLURP) or localised on  
135 the surface of sporozoites (CSP). Serological analysis was conducted on serum samples collected in  
136 December, assayed at a dilution of 1:200. Secondary antibody was an R-phycoerythrin conjugated goat  
137 anti-human IgG (Jackson Immuno Research, PA, USA; 109-116-098) diluted 1:200. Data are presented as  
138 median fluorescence intensity (MFI) (median of individual bead fluorescence values for a given  
139 region/antigen specificity) adjusted for inter-plate variation in background reactivity as previously  
140 described [27]

## 141 **Statistical analysis**

142 Infections were classified as ‘short-lived’ if they were cleared within 2 months, ‘persistent’ if they remained  
143 detectable for 3-6 months and ‘treated’ if they became symptomatic and were treated. Data were analysed  
144 with Graphpad Prism version 9. A normality test (D’Agostino-Pearson) was used to determine if data were  
145 normally distributed. Kruskal-Wallis with Dunns multiple comparison test was used to compare 3 or more  
146 groups of non-parametric data. Spearmans correlation was used to analyse associations with non-  
147 parametric data and Pearsons correlation was used for parametric data. Significance was indicated when  
148 the value of  $p < 0.05$  (\* $p < 0.05$ , \*\* $p < 0.01$ , \*\*\* $p < 0.001$ ).

149

## 150 Results

151 Malaria prevalence at the end of the transmission season (beginning of December 2016) was 8.0%  
152 (74/924), with children under 5 having lower prevalence (2.5%; 5/199) than children 5-15 years old (7.9%;  
153 27/341) and individuals >15 years old (10.9%; 42/384). Complete follow-up data were obtained from 40  
154 individuals, 2 did not complete follow up until negative by PCR, but were parasite positive for at least 3  
155 months so were included in the categorised analysis only (Figure 1a and b). 41% (n=17) of the subjects had  
156 *short lived* infections (undetectable by January), 52% (n=22) had *persistent* infections (detectable by PCR  
157 for 3-6 months), and 3 infected subjects developed symptoms and were *treated* (7%, all children <15 years  
158 of age) (Figure 1b). 40% (16/40) of individuals infected in early December remained PCR positive until the  
159 end of the dry season, with most of these individuals (81.3%; 13/16) also carrying gametocytes at the end  
160 of the dry season (Figure 2a).

161 No association between the sex of the individual and the duration of infection was found (Table S2). Mean  
162 haemoglobin concentration at the start of the dry season was 11.31 g/dL (n=37). HbAA was the most  
163 frequent haemoglobin type (75.7%; 28/37), followed by HbAS (21.6%, 8/37), and HbSS (2.7%, 1/37). There  
164 was no association between haemoglobin concentration (short-lived= 11.35, persistent = 11.18, treated =  
165 11.30) or type and duration of carriage (Table S2). Persistent infections were slightly more common in the  
166 5-15 year olds (63%; 12/19) than in the other age groups (<5years - 0.0% [0/4], >15 years - 53% [10/19])  
167 (Figure 2b). In persistent infections, asexual parasitemia and gametocytemia declined slowly over the  
168 season, with the median asexual parasitemia declining from 214,417 to 10,446 parasites/mL (Figure 2c) and  
169 gametocytemia declining from 1,237 to 289 gametocytes/mL (Figure 2d). The ratio of male:female  
170 gametocytes was female biased (0.20; CI 95%:0.16-0.23), similar to sex ratios observed in transmissible  
171 infections [4] and did not change over time (Figure S2).

172 At the start of the dry season, parasite density in persistent infections was significantly higher than in short-  
173 lived infections ( $p < 0.0001$  Kruskal-Wallis with Dunns multiple comparison test) (Figure 3a), and duration of  
174 infection in months was significantly related to starting parasite density (Spearman's  $r = 0.86$ ,  $p < 0.0001$ )  
175 (Figure 3b). Most persistent infections (82%; 18/22) and only 1 out of 17 short-lived infections had initial  
176 parasite densities above the theoretical limit of expert microscopy detection (10p/uL) [28] (Figure 3a). In  
177 the end of December samples (first monthly visit after screening), most short-lived infections (76%; 13/17)  
178 had only gametocytes, and 53% (9/17) had neither asexual parasites nor gametocytes detected, indicating  
179 these individuals had already cleared their infections in the first month. Whereas at the same time point,  
180 almost all persistent infections had both asexual parasites (20/22) and gametocytes (20/22) at densities  
181 that could be quantified by the qRT-PCR assays.

182 Complexity of infection (the number of genetically distinct genotypes within a blood sample) was measured  
183 throughout the dry season using *m*sp2 genotyping (Figure 4a). In some samples, *m*sp2 genotype could not

184 be determined, likely due to parasite densities being below the assay limit of detection. At the start of the  
185 dry season, most infections had less than 2 genotypes (80.5%, 33/41) and the median per subject was 1  
186 (range 1-8). Complexity of infection was significantly higher in the persistent than in the short-lived  
187 infections ( $p = 0.015$ , Kruskal-Wallis with Dunns multiple comparison test). Higher complexity of infection  
188 (>2 genotypes) was only observed in persistent infections; all short-lived infections were monoclonal,  
189 except for one with 2 genotypes (Figure 4b). The number of genotypes at the start of the dry season also  
190 correlated with parasite density (Figure 4c). In every persistent infection, there was at least one *msp2*  
191 genotype detected repeatedly throughout the dry season, suggesting chronic infection with the same *P.*  
192 *falciparum* strain as opposed to new infections (Figure S3).

193 To assess the role of host immunity in the persistence of *P. falciparum* infection, antibodies were measured  
194 at the start of the dry season using a multiplex bead-based assay with a panel of 17 *P. falciparum* antigens.  
195 There was a trend for higher *P.f.*-specific antibody responses against 13 out of the 17 antigens in subjects  
196 who developed persistent infections compared to those with short-lived infections (Figure 5a and b). The  
197 three Rh family antigens (Rh2, Rh4.2, Rh5.1) were among the four most discriminatory antigens, with  
198 higher antibody levels associated with persistent infections, although only Rh5.1 reached statistical  
199 significance ( $p = 0.03$ ). Of the other individual antigens, only PfSEA and GLURP ( $p = 0.01$ ,  $p = 0.04$ ,  
200 respectively) were significantly associated with subsequent duration of infection (persistent versus short-  
201 lived). Individuals with persistent infections tended to respond to more antigens (above background  
202 response) than those with short-lived infections,  $p = 0.058$  (Figure 5c). The magnitude of total *P.f.*-specific  
203 antibody response to all antigens was significantly correlated with age, Pearson's  $r = 0.43$   $p = 0.017$ . (Figure  
204 5d) and there was also a trend for increased breadth of response with age (Figure 5e).

205



## 206 Discussion

207 In this study, 40% of individuals infected at the end of the wet season remained asymptotically infected  
208 until the end of the dry season, demonstrating the considerable silent reservoir of malaria that exists to re-  
209 start the next transmission season in The Gambia. Individuals with persistent infections had higher starting  
210 parasite densities, often with multiclonal infections, and higher *P.f.*-specific antibody responses, suggesting  
211 that prior malaria exposure is important to maintain the human reservoir of malaria. Targeting these  
212 infections may significantly reduce such a reservoir and thus the capacity of starting the next transmission  
213 season.

214 In areas of seasonal malaria transmission, understanding who maintains the parasite reservoir during the  
215 dry season may inform control interventions to reduce this reservoir and thereby the resurgence of malaria  
216 in the subsequent transmission season [1]. In our study setting, only 8% of village residents had detectable  
217 parasites at the end of the transmission season and towards the end of the dry season the prevalence fell  
218 to 3%. In our modestly sized study population, we aimed to understand factors that contribute to duration  
219 of infection. We observed no clear relationship between subject age and duration of parasite carriage,  
220 although all persistent infections were found in those above 5 years of age. In general, the number of  
221 children under 5 infected at the end of the wet season was low compared to the other age groups, possibly  
222 reflecting the levels of protective immunity, with younger children being more likely to develop symptoms  
223 when infected [7], or the impact of seasonal malaria chemoprevention [29].

224 Responses to the panel of 17 *P. falciparum* antigens tested were generally low [18]. Despite being currently  
225 infected, not all subjects had a response to all antigens above background. This highlights the generally low  
226 level of malaria exposure in the area (when compared to high endemic settings). Individuals with persistent  
227 infections tended to have higher and broader *P.f.*-specific antibody responses than those with short-lived  
228 infections, a finding consistent with previous studies. In Mali, a certain level of immunity was required for  
229 chronic asymptomatic parasite carriage when compared to uninfected individuals [11, 12]. Similarly, in  
230 another study in Mali, asymptomatic infected children had higher levels of *P.f.*-specific antibodies than  
231 children with clinical malaria [13]. Other studies have shown that age (and thus cumulative exposure) is  
232 associated with longer duration of asymptomatic infection in Malawi [30], and this relationship was seen  
233 particularly in children of different ages in Uganda and Ghana [14, 31]. In our study, we also observed a  
234 relationship between age and increasing magnitude and breadth of the immune responses, but this  
235 correlation was relatively weak, with some older individuals having poorer antibody responses. This  
236 supports earlier reports of marked heterogeneity in malaria exposure in The Gambia [3, 32]. In the context  
237 of our current findings, we hypothesize that this heterogeneity results in some individuals being more likely  
238 to experience repeated infections, resulting in higher levels of immunity and thus improved ability to  
239 sustain chronic asymptomatic parasite carriage. Due the heterogeneous nature of exposure, these

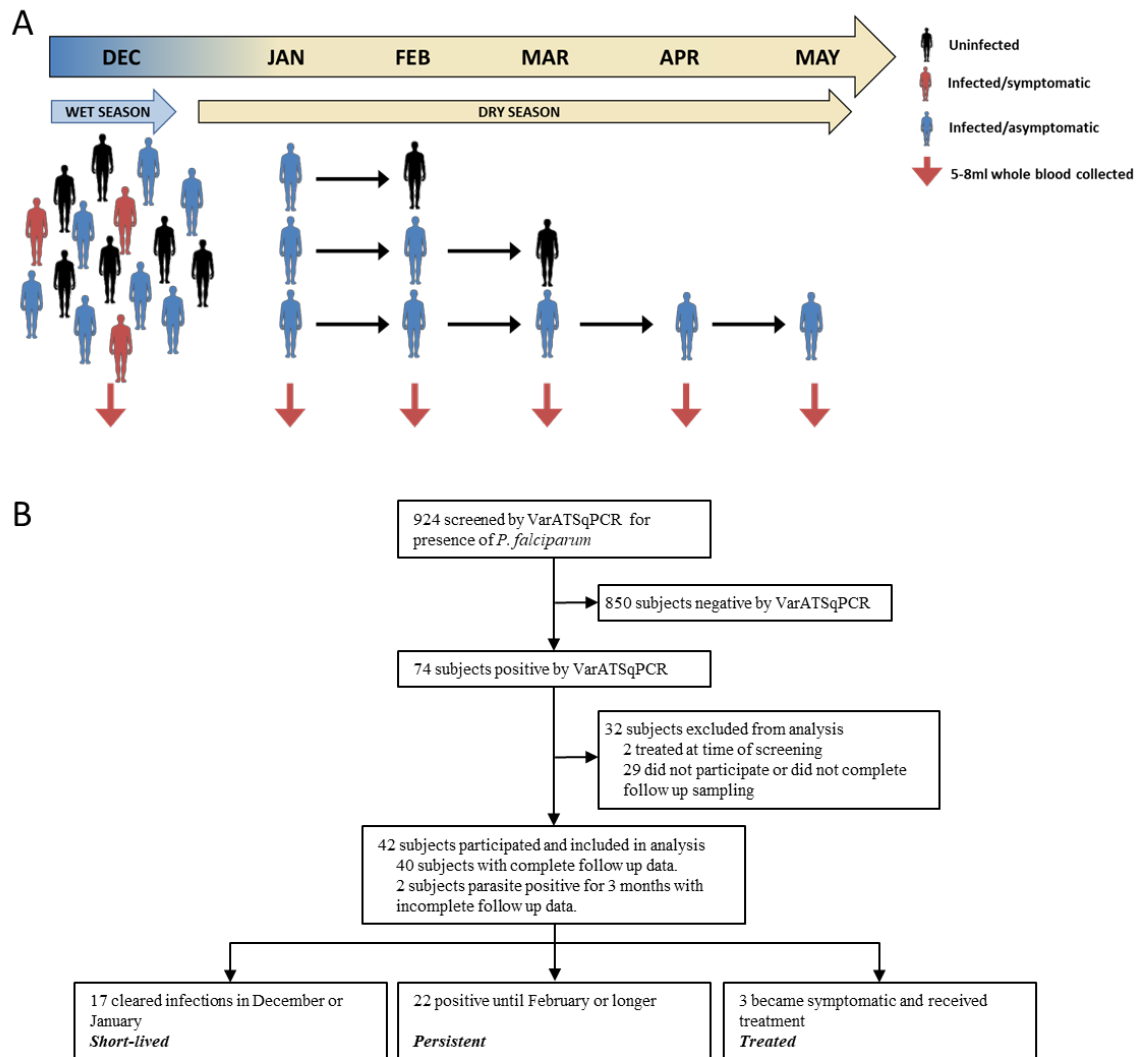
240 individuals are more accurately characterised by responses to a panel of *P. falciparum* antigens than by  
241 age.

242 Each persistent infection had at least one unique genotype repeatedly observed at several time points,  
243 indicating infection persistence. High complexity of infection (multiple genotypes) at the beginning of the  
244 dry season was associated with longer duration of asymptomatic carriage, consistent with data from other  
245 studies [33, 34]. This could either be due to multiple clones being received from a single mosquito bite [35],  
246 or by the accumulation of clones over time in those who harbour infections for a prolonged period.  
247 Complexity of infection and parasite density were also strongly correlated in this study. This could be partly  
248 explained by the difficulty of detecting all parasite clones when density is low and falling below the  
249 detection limit of the assay [36]. Higher parasite density, multi-clonal infections were more likely to persist  
250 throughout the dry season. This could possible be because a higher parasite biomass in December would  
251 take longer to clear. However, this was not clearly supported by our data since parasite densities in  
252 persistent infections did not decrease dramatically during the dry season. Alternatively, parasites in  
253 persistent infections may be (epi)genetically programmed to survive longer, and/or genetically different  
254 from those in short-lived infections, potentially with a less virulent phenotype or slower parasite  
255 multiplication rate. This hypothesis is consistent with a recent study from Mali, where similar parasite  
256 populations were present in the wet and dry seasons. However, parasites in the dry season were  
257 transcriptionally different from those present in the wet season and they were able to adapt their  
258 phenotype to ensure longer circulation and less sequestration during each cycle, resulting in increased  
259 splenic clearance and lower but persistent parasite densities [11].

260 Our study was limited by the small sample size, largely governed by the decreasing malaria prevalence in  
261 the area [3]. However, we were able to demonstrate that the dry season reservoir of malaria is largely  
262 comprised of school aged children and adults who have likely experienced repeated infections. Importantly,  
263 persistent infections could potentially be identified at the start of the dry season, given that they were  
264 associated with higher initial parasite densities. Our findings confirm ongoing gametocyte production in  
265 chronic infections. Future studies may address the infectivity of these infections to mosquitoes and, more  
266 importantly for malaria control, determine whether clearing infections that are present at the start of the  
267 dry season results in a meaningful reduction in malaria burden in the next transmission season.

268

269 **Figures**



270

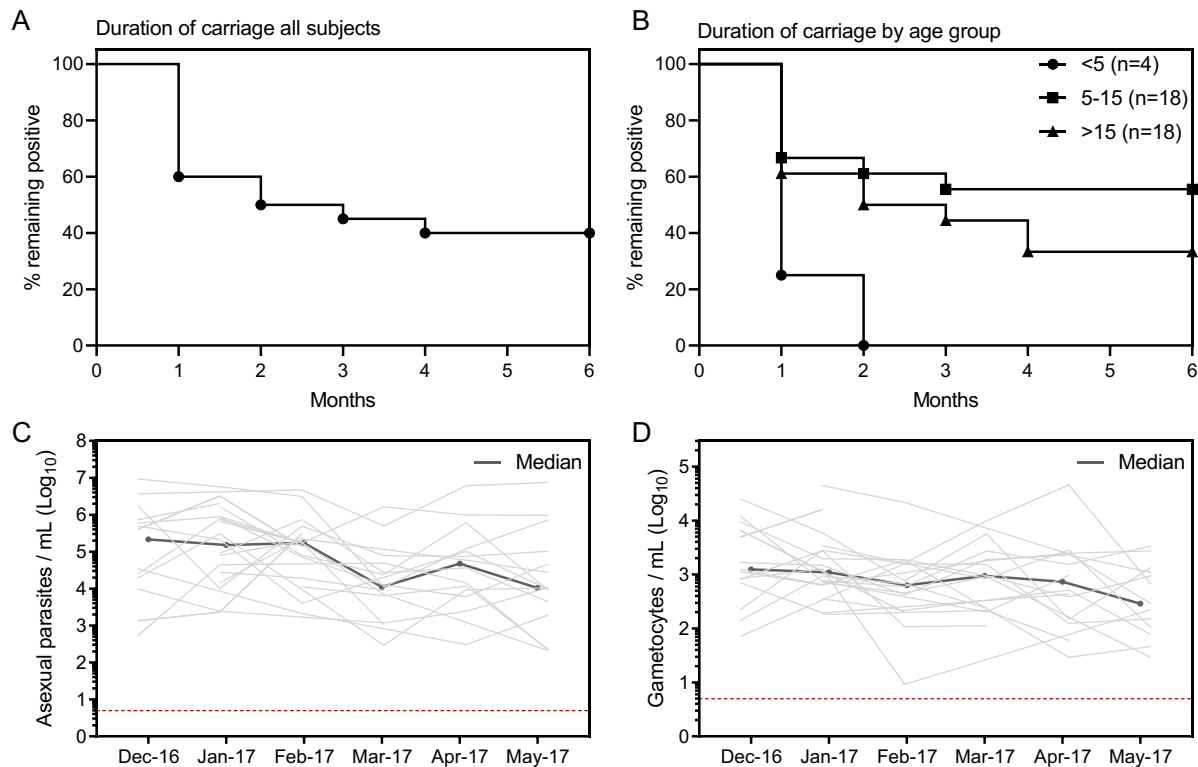
271 **Figure 1: Study design and flow**

272 (A) Illustration of study design (B) Study flow diagram. Subjects were screened in December 2016 and  
 273 asymptomatic parasite positive individuals (by VarATS qPCR) were selected at the end of the wet season  
 274 (December 2016) and were recruited into a longitudinal study with monthly samples to determine duration  
 275 of infection from end of December until the end of the dry season (May) or until they (i) cleared their  
 276 infection (negative by PCR), or (ii) became symptomatic and received treatment.

277

278

279

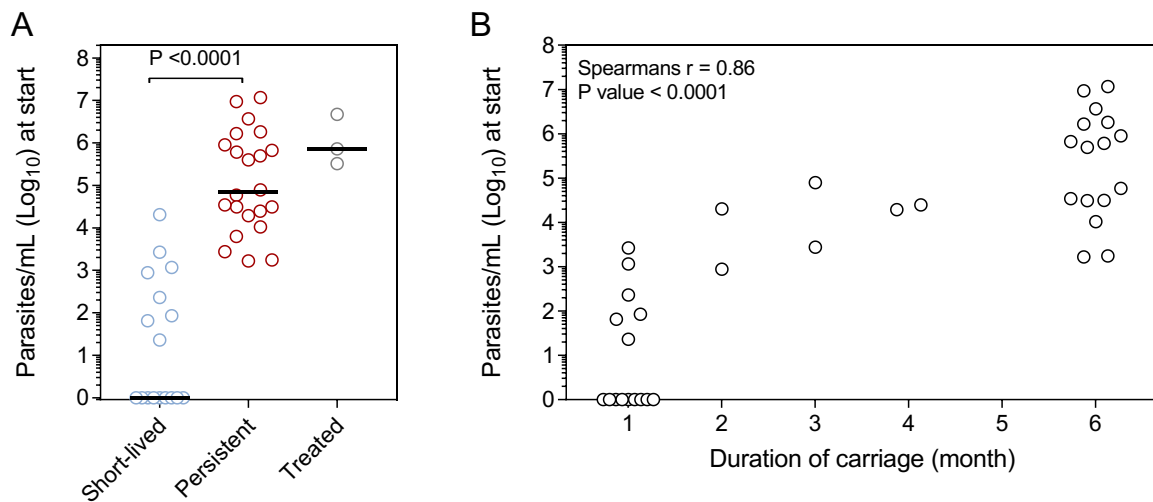


280

281 **Figure 2. Duration of detectable parasite carriage in the blood during the dry season**

282 Subjects (n=42) who were parasite positive by VarATS qPCR in fingerprick blood samples in December were  
283 followed monthly until PCR negative or treated. Two subjects who did not complete follow up were  
284 parasite positive for at least 3 months (and thus classified as persistent infections) are excluded from the  
285 Kaplan Meier graphs. (A) Number of subjects parasite positive each month (n=40). (B) Number of subjects  
286 positive each month by age category. (C) Asexual parasite densities over time in the persistent infections  
287 group, measured in venous blood samples by qRT-PCR for ring stage parasite (*SBP-1*). (D) Total gametocyte  
288 densities (males + females) over time in the persistent infections group, measured in venous blood samples  
289 by qRT-PCR for male (*PfMGET*) and female (*CCp4*) gametocytes. Light grey lines show individual responses  
290 and the dark grey line shows the median response.

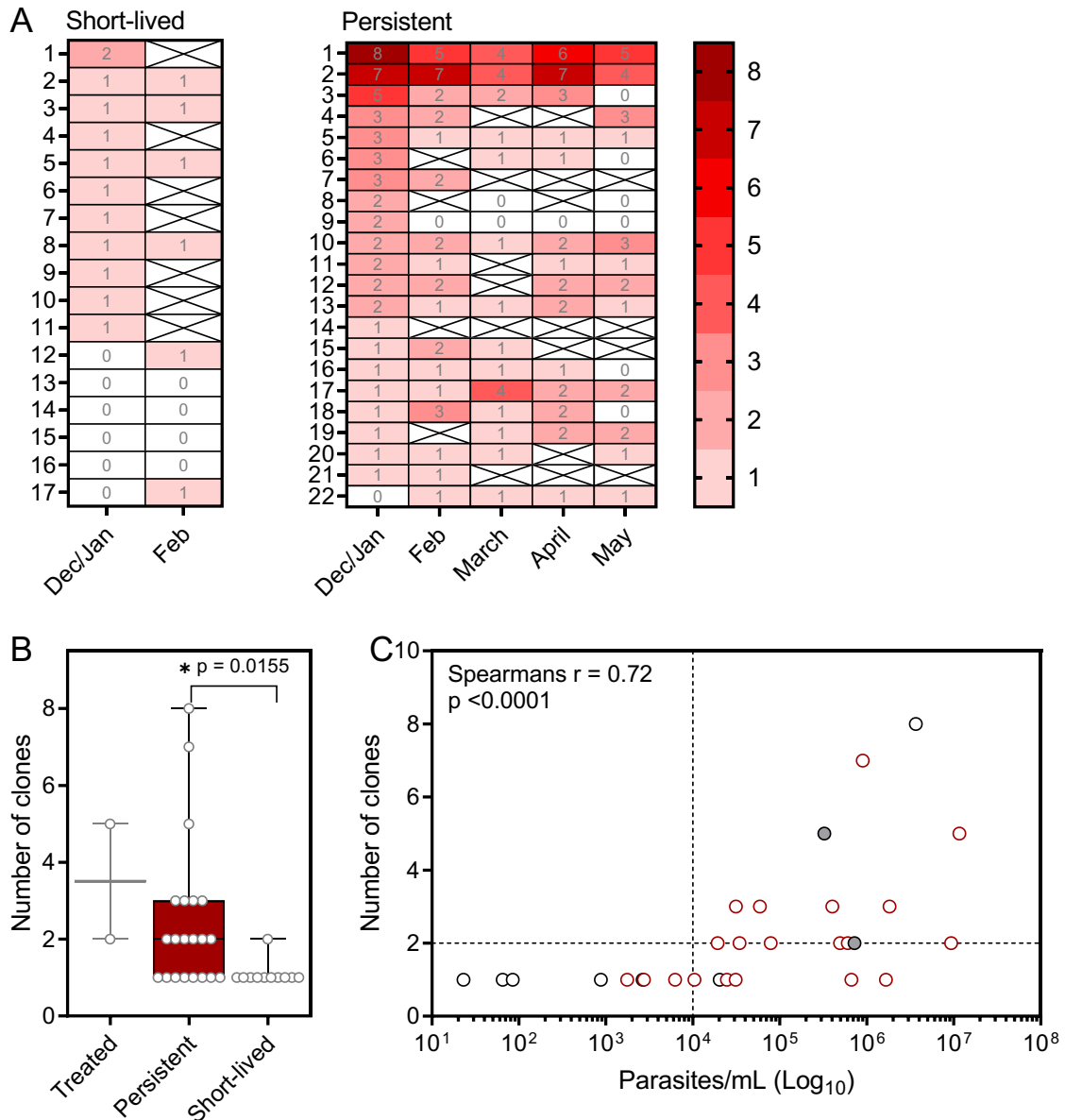
291



292

293 **Figure 3. Level of parasitemia at the beginning of the dry season and subsequent duration of detectable**  
294 **parasitemia**

295 Total parasite density (sum of asexual parasites and male and female gametocytes) for each subject (n=42)  
296 by qRT-PCR at the start of the dry season. (A) Total parasite density for each individual, by group. Groups  
297 compared by Kruskal-Wallis with Dunns multiple comparison test. (B) Spearmans correlation between  
298 parasite density and duration of infection for the persistent and short-lived infection groups.



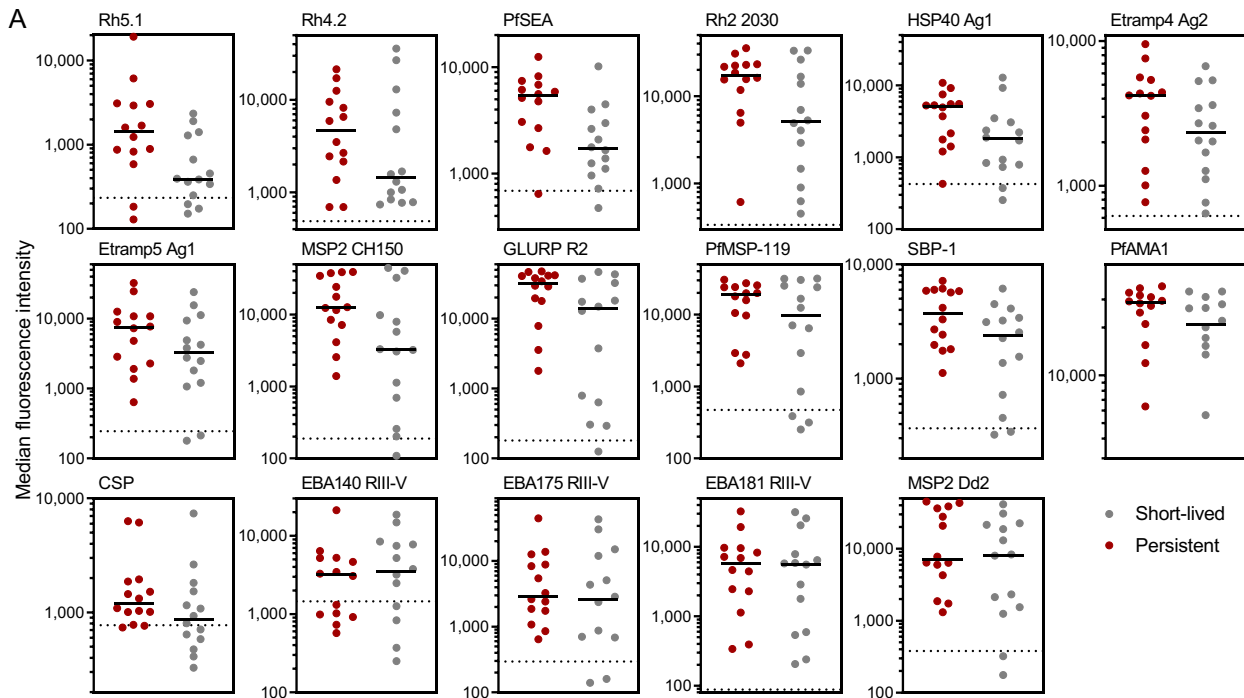
299

300 **Figure 4. Genotypic complexity of parasite infection and persistent detectability through the dry season**

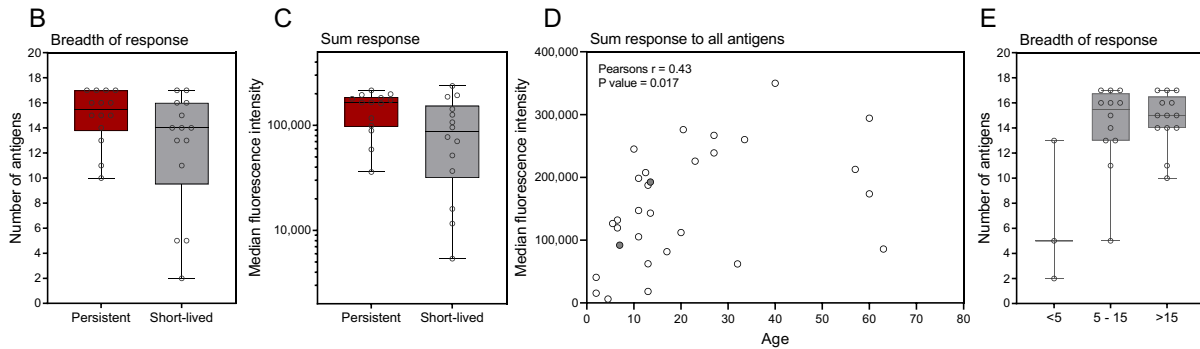
301 The number of clones present in each individual was determined by *msp2* genotyping. (A) Number of  
 302 clones for each individual over time, displayed by group. The black cross indicates where a sample was  
 303 missing and a '0' indicates the number of genotypes could not be determined. (B) Number of clones at the  
 304 start of the dry season in the December or January sample, by group. For 7 subjects there is no genotyping  
 305 data available from December or January. Groups compared by Kruskal-Wallis with Dunns multiple  
 306 comparison test. (C) Spearman's correlation between number of clones and total parasite density at the  
 307 start of the dry season (sum of asexual parasites and gametocytes determined by qRT-PCR). Persistent  
 308 infections (red circles), short-lived infections (black circles), treated (filled circles). Horizontal dashed line  
 309 indicated the theoretical limit of expert microscopy detection

310

311



312



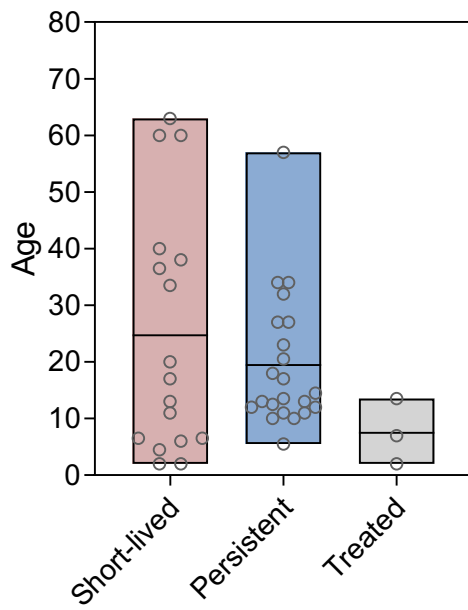
313

314 **Figure 5. Antibody levels to a panel of *P. falciparum* antigens in relation to duration of detectable**  
 315 **infection in the dry season**

316 Antibody responses were measured to a panel of 17 *P. falciparum* antigens using a multiplex bead-based  
 317 assay. (A) Panels show the individual subject responses to each antigen, by short-lived or persistent  
 318 infection group, ordered by decreasing differences between the two groups. Dashed line indicates average  
 319 background response. (B) Sum of the response all 13 upregulated antigens by e group. (C) Number of  
 320 antigens each individual responded to above background by group. (D) Pearsons correlation between age  
 321 and total antibody response to all 17 antigens (treated - grey filled circles). (E) Number of antigens each  
 322 individual responded to above background by age group. Box plots show the median with the whiskers  
 323 indicating the minimum and maximum

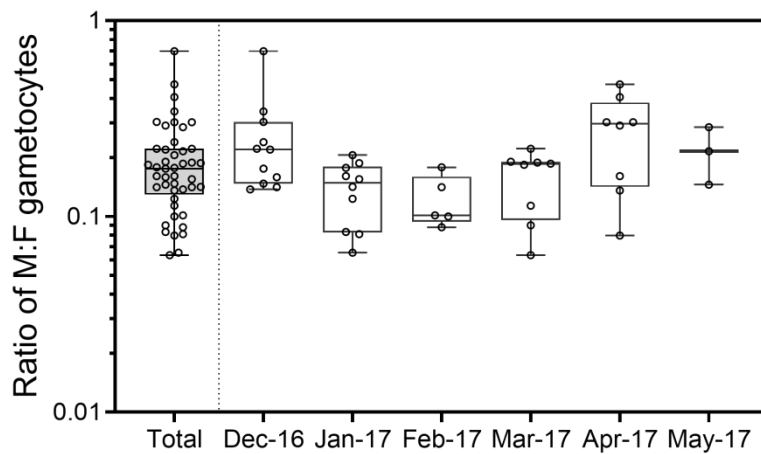
324

325 Supplementary Figures



326

327 **Figure S1. Age distribution and duration of carriage**

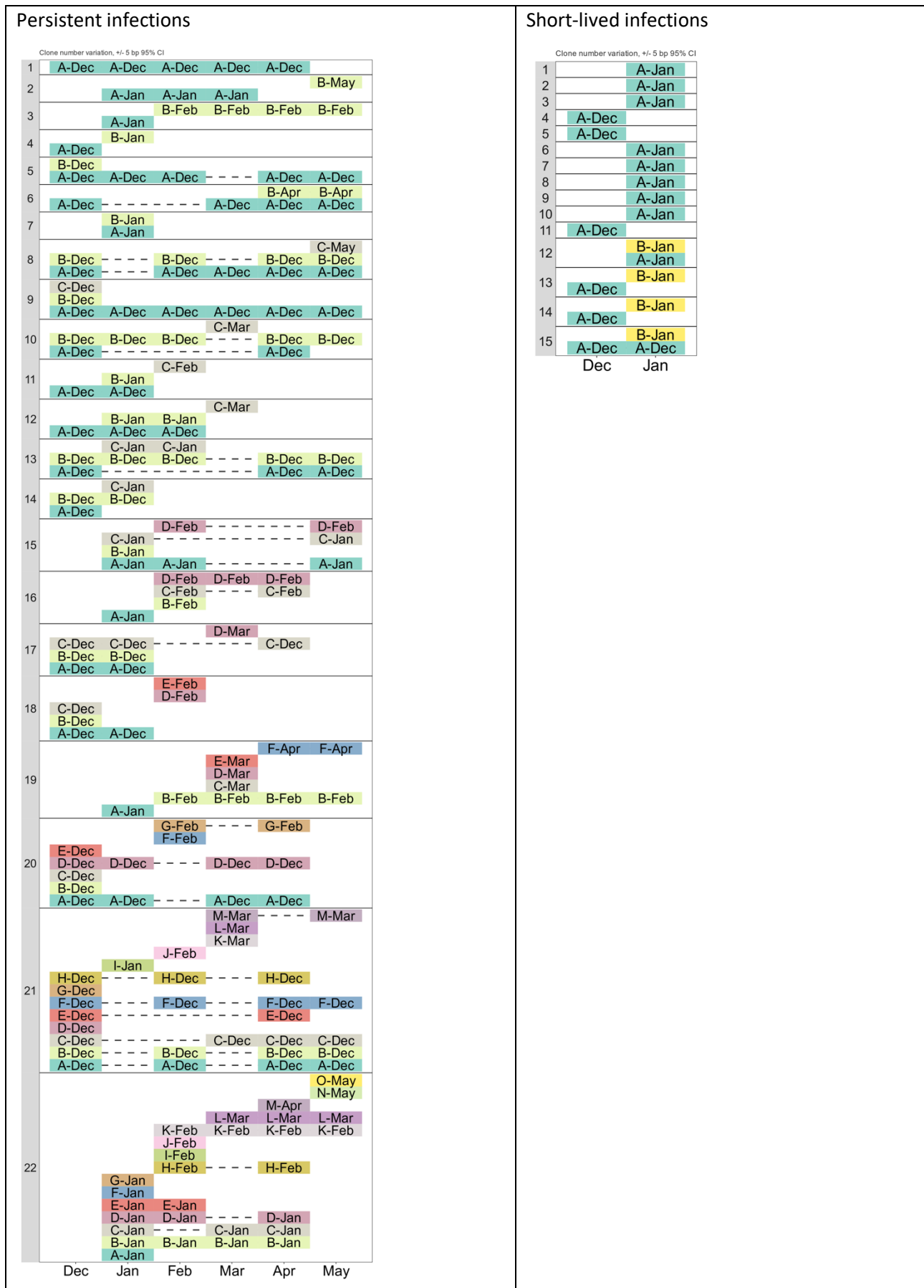


328

329 **Figure S2. Sex ratio of gametocytes**

330





**Figure S3. Number and types of *MSP2* genotypes per sample.** In each volunteer (left-hand column), each coloured rectangle is a specific *MSP2* genotype. When the same genotype is detected over multiple timepoints, the same colour and name are used. For example, in the persistent infection number 1, the

same genotype was detected in Dec, Jan, Feb, Mar and Apr (no information for May). In some volunteers, novel genotypes appear during the dry season, potentially indicating a new infection. However, in every persistent infection, at least one specific *MSP2* genotype is detected repeatedly throughout the dry season, showing that *P. falciparum* may remain asymptomatic for at least 6 months. Among persistent infections, a change in number of detected genotypes from one timepoint to the next did not associate with a change in parasitaemia, indicating that we probably detected most/all genotypes present in the infection.

## 331 **Supplementary Tables**

333 **Table S1: Details of antigens used in Luminex assay**

Gene ID	Acronym	Description	Location	Expression tag	Strain	Reference
PF3D7_0304600	CSP	Most predominant and antigenic protein on sporozoite surface. Component of RTS,S vaccine	Sporozoite	n/a	3D7	Kastenmuller et al (PMID: 23275094)
PF3D7_1301600	EBA140 RIII-V	erythrocyte binding antigen 140; involved in erythrocyte invasion	Apical organelles, micronemes	GST	3D7	Richards et al (PMID: 20843207)
PF3D7_0731500	EBA175RII_F2	erythrocyte binding antigen 175; RBC binding region via glycophorin A	Apical tip	GST	3D7	Richards et al (PMID: 20843207)
PF3D7_0102500	EBA181 RIII-V	erythrocyte binding antigen 181; involved in erythrocyte invasion	Apical tip	GST	3D7	Richards et al (PMID: 20843207)
PF3D7_1035300	GLURP R2	Glutamate rich protein R2	Merozoite Surface	n/a	F32	Theisen et al (PMID: 7719909)
PF3D7_0206800	MSP2 CH150/9	CH150/9 allele of MSP2. Full-length.	Merozoite surface	GST	CH150/9	Polley et al (PMID: 12654798)
PF3D7_0206800	MSP2 Dd2	Dd2 allele of MSP2. Full-length.	Merozoite surface	GST	DD2	Taylor et al (PMID: 7591074)
PF3D7_1133400	AMA1	Apical membrane antigen 1	Micronemes	His	FVO	Collins et al (PMID: 17192270)
PF3D7_0930300	MSP1-19	19kDa fragment of MSP1 molecule.	Merozoite surface	GST	Wellcome	Burghaus and Holder (PMID: 8078519)
PF3D7_1335400	Rh2_2030	Reticulocyte-binding protein homolog 2; involved in erythrocyte invasion	Merozoites; Rhoptries	GST	3D7	Triglia et al (PMID: 11160005); Tetteh K unpublished
PF3D7_0424200	Rh4.2	Reticulocyte-binding protein homolog 4; involved in erythrocyte invasion	Merozoites; Rhoptries	GST	3D7	Reiling 2012 (PMID: 23028883); Tetteh K unpublished
PF3D7_0424100	Rh5.1	Reticulocyte-binding protein homolog 5; involved in erythrocyte invasion	Merozoites; Rhoptries	His	3D7	Hjerrild et al (PMID: 27457156); Tetteh K unpublished
PF3D7_0423700	Etramp 4 Ag 2	Early transcribed membrane antigen. Integral PVM protein. C-terminal	iRBC, PVM	GST	3D7	Helb et al (PMID: 26216993); Tetteh unpublished
PF3D7_0532100	Etramp 5 Ag 1	Early transcribed membrane antigen. Integral PVM protein	iRBC, PVM	GST	3D7	Spielmann et al (PMID: 12686607); Tetteh K unpublished

PF3D7_0501100.1	HSP40 Ag 1	Heat shock protein 40	iRBC	GST	3D7	Helb et al (PMID: 26216993); Tetteh unpublished
PF3D7_1021800	PfSEA-1	Schizont egress antigen	iRBC	GST	3D7	Raj et al (PMID: 24855263); Tetteh K unpublished
PF3D7_0501300	SBP1	Skeleton-binding protein; translocation of PfEMP1 to RBC surface via Maurer's cleft	iRBC	GST	3D7	Gruring et al (PMID: 21266965); Tetteh K unpublished

334

335

336

337 **Table S2: Group characteristics**

	<b>Short-lived</b>	<b>Persistent</b>	<b>Treated</b>
<b>Haemoglobin type</b>			
HbAA	75% (12/16)	79% (15/19)	50% (1/2)
HbAS	19% (3/16)	21% (4/19)	50% (1/2)
HbSS	6% (1/16)		
Concentration (mean g/dL)	11.35	11.18	11.3
<b>Age</b>			
<5	3/17(18%)	0/22 (0%)	1/3 (33%)
5-15	5/17 (29%)	12/22 (55%)	2/3 (67%)
>15	9/17 (53%)	10/22 (45%)	0/3 (0%)
<b>Sex</b>			
Male	8/17 (47%)	12/22 (55%)	2/3 67%)
Female	9/17 (53%)	10/22 (45%)	1/3 (33%)
<b>Other</b>			
Bednet usage (yes/total)	36% (5/14)	53% (10/19)	66% (2/3)
Indoor Residual Spraying (yes/total)	7% (1/14)	0% (0/19)	33% (1/3)

338

339

340

### 341 **Funding**

342 This work was supported by grants from the Netherlands Organization for Scientific Research (Vidi  
343 fellowship NWO 016.158.306) and the Bill & Melinda Gates Foundation (INDIE OPP1173572), the joint  
344 MRC/LSHTM fellowship, the French National Research Agency (18-CE15-0009-01).

### 345 **Conflict of interest**

### 346 **Acknowledgments**

347 We would like to thank Julia Mwesigwa and all fieldworkers for sample collection.

## 348 References

- 349 1. Babiker HA: **Unstable malaria in Sudan: the influence of the dry season. Plasmodium falciparum**  
350 **population in the unstable malaria area of eastern Sudan is stable and genetically complex.** *Trans*  
351 *R Soc Trop Med Hyg* 1998, **92**:585-589.
- 352 2. Ouedraogo AL, Goncalves BP, Gneme A, Wenger EA, Guelbeogo MW, Ouedraogo A, Gerardin J,  
353 Bever CA, Lyons H, Pitroipa X, et al: **Dynamics of the Human Infectious Reservoir for Malaria**  
354 **Determined by Mosquito Feeding Assays and Ultrasensitive Malaria Diagnosis in Burkina Faso.** *J*  
355 *Infect Dis* 2016, **213**:90-99.
- 356 3. Mwesigwa J, Okebe J, Affara M, Di Tanna GL, Nwakanma D, Janha O, Opondo K, Grietens KP, Achan  
357 J, D'Alessandro U: **On-going malaria transmission in The Gambia despite high coverage of control**  
358 **interventions: a nationwide cross-sectional survey.** *Malar J* 2015, **14**:314.
- 359 4. Bousema T, Okell L, Felger I, Drakeley C: **Asymptomatic malaria infections: detectability,**  
360 **transmissibility and public health relevance.** *Nat Rev Microbiol* 2014, **12**:833-840.
- 361 5. Ashley EA, White NJ: **The duration of Plasmodium falciparum infections.** *Malar J* 2014, **13**:500.
- 362 6. Hamad AA, El Hassan IM, El Khalifa AA, Ahmed GI, Abdelrahim SA, Theander TG, Arnot DE: **Chronic**  
363 **Plasmodium falciparum infections in an area of low intensity malaria transmission in the Sudan.**  
364 *Parasitology* 2000, **120 ( Pt 5)**:447-456.
- 365 7. Andolina C, Rek JC, Briggs J, Okoth J, Musiime A, Ramjith J, Teyssier N, Conrad M, Nankabirwa JI,  
366 Lanke K, et al: **Sources of persistent malaria transmission in a setting with effective malaria**  
367 **control in eastern Uganda: a longitudinal, observational cohort study.** *Lancet Infect Dis* 2021.
- 368 8. Gupta S, Snow RW, Donnelly CA, Marsh K, Newbold C: **Immunity to non-cerebral severe malaria is**  
369 **acquired after one or two infections.** *Nat Med* 1999, **5**:340-343.
- 370 9. Snow RW, Omumbo JA, Lowe B, Molyneux CS, Obiero JO, Palmer A, Weber MW, Pinder M, Nahlen  
371 B, Obonyo C, et al: **Relation between severe malaria morbidity in children and level of**  
372 **Plasmodium falciparum transmission in Africa.** *Lancet* 1997, **349**:1650-1654.
- 373 10. Baird JK: **Host age as a determinant of naturally acquired immunity to Plasmodium falciparum.**  
374 *Parasitol Today* 1995, **11**:105-111.
- 375 11. Andrade CM, Fleckenstein H, Thomson-Luque R, Doumbo S, Lima NF, Anderson C, Hibbert J, Hopp  
376 CS, Tran TM, Li S, et al: **Increased circulation time of Plasmodium falciparum underlies persistent**  
377 **asymptomatic infection in the dry season.** *Nat Med* 2020, **26**:1929-1940.
- 378 12. Portugal S, Tran TM, Ongoiba A, Bathily A, Li S, Doumbo S, Skinner J, Doumtabe D, Kone Y, Sangala  
379 J, et al: **Treatment of Chronic Asymptomatic Plasmodium falciparum Infection Does Not Increase**  
380 **the Risk of Clinical Malaria Upon Reinfection.** *Clin Infect Dis* 2017, **64**:645-653.
- 381 13. Crompton PD, Kayala MA, Traore B, Kayentao K, Ongoiba A, Weiss GE, Molina DM, Burk CR,  
382 Waisberg M, Jasinskas A, et al: **A prospective analysis of the Ab response to Plasmodium**  
383 **falciparum before and after a malaria season by protein microarray.** *Proc Natl Acad Sci U S A*  
384 2010, **107**:6958-6963.
- 385 14. Briggs J, Teyssier N, Nankabirwa JI, Rek J, Jagannathan P, Arinaitwe E, Bousema T, Drakeley C,  
386 Murray M, Crawford E, et al: **Sex-based differences in clearance of chronic Plasmodium falciparum**  
387 **infection.** *Elife* 2020, **9**.
- 388 15. Gonzales SJ, Reyes RA, Braddom AE, Batugedara G, Bol S, Bunnik EM: **Naturally Acquired Humoral**  
389 **Immunity Against Plasmodium falciparum Malaria.** *Front Immunol* 2020, **11**:594653.
- 390 16. Langhorne J, Ndungu FM, Sponaas AM, Marsh K: **Immunity to malaria: more questions than**  
391 **answers.** *Nat Immunol* 2008, **9**:725-732.
- 392 17. Rono J, Osier FH, Olsson D, Montgomery S, Mhoja L, Rooth I, Marsh K, Farnert A: **Breadth of anti-**  
393 **merozoite antibody responses is associated with the genetic diversity of asymptomatic**  
394 **Plasmodium falciparum infections and protection against clinical malaria.** *Clin Infect Dis* 2013,  
395 **57**:1409-1416.
- 396 18. Wu L, Mwesigwa J, Affara M, Bah M, Correa S, Hall T, Singh SK, Beeson JG, Tetteh KKA, Kleinschmidt  
397 I, et al: **Antibody responses to a suite of novel serological markers for malaria surveillance**  
398 **demonstrate strong correlation with clinical and parasitological infection across seasons and**  
399 **transmission settings in The Gambia.** *BMC Med* 2020, **18**:304.

- 400 19. Achan J, Reuling IJ, Yap XZ, Dabira E, Ahmad A, Cox M, Nwakanma D, Tetteh K, Wu L, Bastiaens GJH,  
401 et al: **Serologic Markers of Previous Malaria Exposure and Functional Antibodies Inhibiting**  
402 **Parasite Growth Are Associated With Parasite Kinetics Following a Plasmodium falciparum**  
403 **Controlled Human Infection.** *Clin Infect Dis* 2020, **70**:2544-2552.
- 404 20. Taylor SM, Parobek CM, Fairhurst RM: **Haemoglobinopathies and the clinical epidemiology of**  
405 **malaria: a systematic review and meta-analysis.** *Lancet Infect Dis* 2012, **12**:457-468.
- 406 21. White NJ: **Anaemia and malaria.** *Malar J* 2018, **17**:371.
- 407 22. Akiyama T, Pongvongsa T, Phrommala S, Taniguchi T, Inamine Y, Takeuchi R, Watanabe T,  
408 Nishimoto F, Moji K, Kano S, et al: **Asymptomatic malaria, growth status, and anaemia among**  
409 **children in Lao People's Democratic Republic: a cross-sectional study.** *Malar J* 2016, **15**:499.
- 410 23. Hofmann N, Mwingira F, Shekalaghe S, Robinson LJ, Mueller I, Felger I: **Ultra-sensitive detection of**  
411 **Plasmodium falciparum by amplification of multi-copy subtelomeric targets.** *PLoS Med* 2015,  
412 **12**:e1001788.
- 413 24. Meerstein-Kessel L, Andolina C, Carrio E, Mahamar A, Sawa P, Diawara H, van de Vegte-Bolmer M,  
414 Stone W, Collins KA, Schneider P, et al: **A multiplex assay for the sensitive detection and**  
415 **quantification of male and female Plasmodium falciparum gametocytes.** *Malar J* 2018, **17**:441.
- 416 25. Mueller I, Schoepflin S, Smith TA, Benton KL, Bretscher MT, Lin E, Kiniboro B, Zimmerman PA, Speed  
417 TP, Siba P, Felger I: **Force of infection is key to understanding the epidemiology of Plasmodium**  
418 **falciparum malaria in Papua New Guinean children.** *Proc Natl Acad Sci U S A* 2012, **109**:10030-  
419 10035.
- 420 26. Grignard L, Mair C, Curry J, Mahey L, Bastiaens GJH, Tiono AB, Okebe J, Coulibaly SA, Goncalves BP,  
421 Affara M, et al: **Bead-based assays to simultaneously detect multiple human inherited blood**  
422 **disorders associated with malaria.** *Malar J* 2019, **18**:14.
- 423 27. Wu L, Hall T, Ssewanyana I, Oulton T, Patterson C, Vasileva H, Singh S, Affara M, Mwesigwa J,  
424 Correa S, et al: **Optimisation and standardisation of a multiplex immunoassay of diverse**  
425 **Plasmodium falciparum antigens to assess changes in malaria transmission using sero-**  
426 **epidemiology.** *Wellcome Open Res* 2019, **4**:26.
- 427 28. Bejon P, Andrews L, Hunt-Cooke A, Sanderson F, Gilbert SC, Hill AV: **Thick blood film examination**  
428 **for Plasmodium falciparum malaria has reduced sensitivity and underestimates parasite density.**  
429 *Malar J* 2006, **5**:104.
- 430 29. Ahmad A, Prom A, Bradley J, Ndiath M, Etoketim B, Bah M, Van Geertruyden JP, Drakeley C,  
431 Bousema T, Achan J, D'Alessandro U: **Gametocyte carriage after seasonal malaria**  
432 **chemoprevention in Plasmodium falciparum infected asymptomatic children.** *Malar J* 2021,  
433 **20**:169.
- 434 30. Buchwald AG, Sorkin JD, Sixpence A, Chimenya M, Damson M, Wilson ML, Seydel K, Hochman S,  
435 Mathanga D, Taylor TE, Laufer MK: **Association Between Age and Plasmodium falciparum**  
436 **Infection Dynamics.** *Am J Epidemiol* 2019, **188**:169-176.
- 437 31. Bretscher MT, Maire N, Felger I, Owusu-Agyei S, Smith T: **Asymptomatic Plasmodium falciparum**  
438 **infections may not be shortened by acquired immunity.** *Malar J* 2015, **14**:294.
- 439 32. Okebe J, Affara M, Correa S, Muhammad AK, Nwakanma D, Drakeley C, D'Alessandro U: **School-**  
440 **based countrywide seroprevalence survey reveals spatial heterogeneity in malaria transmission**  
441 **in the Gambia.** *PLoS One* 2014, **9**:e110926.
- 442 33. Nassir E, Abdel-Muhsin AM, Suliaman S, Kenyon F, Kheir A, Geha H, Ferguson HM, Walliker D,  
443 Babiker HA: **Impact of genetic complexity on longevity and gametocytogenesis of Plasmodium**  
444 **falciparum during the dry and transmission-free season of eastern Sudan.** *Int J Parasitol* 2005,  
445 **35**:49-55.
- 446 34. Smith T, Beck HP, Kitua A, Mwankusye S, Felger I, Fraser-Hurt N, Irion A, Alonso P, Teuscher T,  
447 Tanner M: **Age dependence of the multiplicity of Plasmodium falciparum infections and of other**  
448 **malaria indices in an area of high endemicity.** *Trans R Soc Trop Med Hyg* 1999, **93 Suppl**  
449 **1**:15-20.
- 450 35. Nkhoma SC, Trevino SG, Gorena KM, Nair S, Khoswe S, Jett C, Garcia R, Daniel B, Dia A, Terlouw DJ,  
451 et al: **Co-transmission of Related Malaria Parasite Lineages Shapes Within-Host Parasite Diversity.**  
452 *Cell Host Microbe* 2020, **27**:93-103 e104.

- 453 36. Koepfli C, Schoepflin S, Bretscher M, Lin E, Kiniboro B, Zimmerman PA, Siba P, Smith TA, Mueller I,  
454 Felger I: **How much remains undetected? Probability of molecular detection of human Plasmodia**  
455 **in the field.** *PLoS One* 2011, **6**:e19010.  
456