

A Remote Digital Memory Composite to Detect Cognitive Impairment in Memory Clinic Samples in Unsupervised Settings using Mobile Devices

David Berron^{1,17}, Wenzel Glanz^{1,2}, Lindsay Clark^{21,22}, Kristin Basche²¹, Xenia Grande^{1,2}, Jeremie Güsten^{1,2}, Ornella V. Billette¹⁷, Ina Hempen¹⁷, Muhammad Hashim Naveed¹⁷, Nadine Diersch¹⁷, Michaela Butryn^{1,2}, Annika Spottke⁴, Katharina Buerger^{6,7}, Robert Perneczky^{6,8,18,19}, Anja Schneider^{4,11}, Stefan Teipel^{12,13}, Jens Wiltfang^{14,15}, Sterling Johnson^{21,22}, Michael Wagner^{4,11}, Frank Jessen¹⁶, Emrah Düzel^{1,2,17} and the DELCODE Consortium

¹ German Center for Neurodegenerative Diseases, Magdeburg, Germany

² Institute for Cognitive Neurology and Dementia Research, Otto-von-Guericke University, Magdeburg, Germany

⁴ German Center for Neurodegenerative Diseases, Bonn, Germany

⁵ University Department of Neurology, Medical Faculty University Hospital, Magdeburg, Germany

⁶ German Center for Neurodegenerative Diseases, Munich, Germany

⁷ Institute for Stroke and Dementia Research (ISD), University Hospital, LMU Munich, Munich, Germany

⁸ Department of Psychiatry and Psychotherapy, University Hospital, LMU Munich, Munich, Germany

⁹ German Center for Neurodegenerative Diseases, Tübingen, Germany

¹⁰ Section for Dementia Research, Hertie Institute for Clinical Brain Research and Department of Psychiatry and Psychotherapy, University of Tübingen, Tübingen, Germany

¹¹ Department for Neurodegenerative Diseases and Geriatric Psychiatry, University Hospital Bonn, Bonn, Germany

¹² Department of Psychosomatic Medicine, Rostock University Medical Center, Rostock, Germany

¹³ German Center for Neurodegenerative Diseases, Rostock, Germany

¹⁴ German Center for Neurodegenerative Diseases, Göttingen, Germany

¹⁵ Department of Psychiatry and Psychotherapy, University Medical Center Göttingen, University of Göttingen, Göttingen, Germany

¹⁶ German Center for Neurodegenerative Diseases, Cologne, Germany

¹⁷ neotiv GmbH, Magdeburg, Germany

¹⁸ Munich Cluster for Systems Neurology (SyNergy), Munich, Germany

¹⁹ Ageing Epidemiology Research Unit (AGE), Imperial College London, London, UK

²¹ Department of Medicine, Division of Geriatrics and Gerontology, University of Wisconsin, School of Medicine and Public Health, Madison, Wisconsin, US

²² Geriatric Research Education and Clinical Center, William S. Middleton Memorial Veterans Hospital, Madison, Wisconsin, US

Corresponding author:

David Berron

david.berron@dzne.de

+49 391 6724537

Clinical Cognitive Neuroscience Group

German Center for Neurodegenerative Diseases (DZNE)

Leipziger Straße 44

39120 Magdeburg, Germany

The DELCODE study has been registered in the German Clinical Trials Register (DRKS00007966), retrospectively (04/May/2015).

Running title: Remote Digital Memory Composite

Abstract

Mobile app-based unsupervised monitoring of cognition holds the promise to facilitate case-finding in clinical care and the individual detection of cognitive impairment in clinical and research settings. In the context of Alzheimer's disease, this is particularly relevant for patients who seek medical advice due to memory complaints. Here we developed a Remote Digital Memory Composite (RDMC) score from an unsupervised remote and mobile cognitive assessment battery focused on episodic memory and long-term recall and assessed its construct validity, retest reliability and diagnostic accuracy when predicting MCI-grade impairment in a memory clinic sample and healthy controls. A total of 199 study participants were recruited from three cohorts and included as healthy controls (HC; n=97), individuals with subjective cognitive decline (SCD; n= 59) or patients with mild cognitive impairment (MCI; n=43). Study participants performed cognitive assessments in a fully remote and unsupervised setting via a smartphone app for cognitive testing. The derived RDMC score was highly correlated with the PACC5 score across participants and demonstrated good retest reliability. Diagnostic accuracy for discriminating memory impairment from no impairment was high (cross-validated AUC = 0.83, 95% CI [0.66, 0.99]) with a sensitivity of 0.82 and a specificity of 0.71. Our results indicate that unsupervised mobile cognitive assessments in a memory clinic setting using the implementation in the neotiv digital platform results in a good discrimination between cognitively impaired and unimpaired individuals. Thus, it is feasible to complement neuropsychological assessment of episodic memory with unsupervised and remote assessments on mobile devices. This contributes to recent efforts for implementing remotely performed episodic memory assessment for case-finding and monitoring in large research trials and clinical care.

Keywords: digital cognitive assessment, episodic memory, subjective cognitive decline (SCD), mild cognitive impairment (MCI), Alzheimer's Disease (AD)

1 **Background**

2 Differentiating mild cognitive impairment (MCI) from subjective cognitive impairment is important to
3 provide prognosis regarding future cognitive decline as well as regarding the potential eligibility for
4 treatments at the MCI stage of Alzheimer's disease (AD). However, differentiating MCI from
5 subjective cognitive impairment is still very challenging using brief cognitive tests ¹. More than 80%
6 of older adults who seek medical advice due to memory complaints and who are later found to have
7 a biomarker profile indicative of Alzheimer's disease have an amnesic variant with predominant
8 episodic memory impairment ². Indeed, episodic memory, the ability to recall spatial and temporal
9 relationships of personally experienced events ³, is a key component of the neuropsychological
10 assessment of individuals with suspected AD ⁴. Consequently, episodic recall is an important element
11 of the Preclinical Alzheimer Cognitive Composite (PACC5) ^{5,6}.

12 The aim of the PACC5 is to provide a comprehensive assessment of AD relevant cognitive impairment
13 and to serve as a tool with validated sensitivity to detect cognitive decline over time ^{5,6}. However,
14 traditional paper-and-pencil assessments to derive composites such as the PACC5 are time-
15 consuming and require supervision by a trained neuropsychologist ⁶. This severely restricts their
16 utility and implementation in primary care, especially when considering equal-opportunities to
17 comprehensive neuropsychological assessments also in rural areas, and use of high frequency
18 cognitive assessment to account for day-to-day variations in cognitive performance. In general, the
19 long test duration and specialized supervision make the high-frequency longitudinal use of
20 established neuropsychological assessments practically impossible. There is, thus, a strong need for
21 unsupervised, remote, high-frequency cognitive assessment that can provide meaningful
22 approximation of traditional neuropsychological scores.

23 Mobile devices such as smartphones and tablets have the potential to enable unsupervised and
24 remote high-frequency cognitive assessments ⁷⁻⁹. Indeed, recent studies have demonstrated the
25 feasibility of remote digital cognitive assessments in the general population ¹⁰ as well as in older
26 adults and patient populations ¹¹⁻¹⁶. Implementing a mobile and remote proxy for a
27 neuropsychological assessment (such as the tests that comprise the PACC5) also offers the
28 opportunity to overcome some of the shortcomings of neuropsychological tests. One potential
29 disadvantage of established neuropsychological assessments of episodic memory is for example that
30 they heavily tax on verbal abilities which makes it difficult to assess episodic memory in multi-lingual
31 settings or when verbal abilities are already impaired ⁴. In addition, implementing new cognitive tests
32 allows to take into account the latest insights into the functional architecture of episodic memory
33 and the spread of AD pathology. Recent work on the functional neuroanatomy of episodic memory
34 showed that episodic memory involves a network including medial temporal, midline parietal and
35 cortical regions, each of which serve different functions and are affected in different stages of AD

1 ^{17,18}. Episodic memory requires pattern separation processes that are mediated by the dentate gyrus
2 ^{19,20} and reduce memory interference between similar events, and pattern completion processes that
3 are mediated by hippocampal Cornu Ammonis 3 (CA3) and enable the recollection of details from a
4 past event in interplay with neocortical regions ²¹. The medial temporal lobe regions provide
5 information to the hippocampus mainly through the entorhinal cortex. That in turn, receives partly
6 domain-segregated information such that object representations are transferred via the perirhinal
7 cortex and the anterior-lateral entorhinal subdivision and scene representations via the
8 parahippocampal cortex and posterior-medial parts of the entorhinal cortex ²²⁻²⁶. Taken together,
9 there is converging evidence that in addition to long-term recall, short-term mnemonic
10 discrimination of object and scene representations is impaired in the predementia stages of AD ²⁷.
11 Besides pattern separation and completion, a third aspect of episodic memory is recognition memory
12 ^{28,29}. Although the neurobiology of recognition memory is complex and it is likely to have a non-
13 episodic, familiarity-based component ³⁰⁻³², it is evident that medial temporal lobe dysfunction can
14 impair recognition memory alongside impairments of recall ³⁰.

15 A set of anatomically informed and non-verbal tasks for episodic memory that incorporate these
16 recent insights into the functional anatomy of episodic memory is available on the neotiv digital
17 platform (<https://www.neotiv.com/en>) ^{10,15} and has been implemented in prospective cohort studies
18 of the German Center for Neurodegenerative Diseases (DZNE) and the Wisconsin Registry for
19 Alzheimer's Prevention (WRAP). There are three different tests of memory. First, a short-term
20 mnemonic discrimination test tapping into pattern separation, separately implemented for object
21 and scene stimuli, second, a short- and long-term cued-recall test of object-scene associations
22 tapping into pattern-completion and, third, a long-term photographic scene recognition memory
23 test.

24 Here we evaluated these three memory measures in a remote and unsupervised design using mobile
25 devices. To that end, we developed a Remote Digital Memory Composite (RDMC) score and assessed
26 its construct validity using in-clinic neuropsychological assessment as well as its retest reliability
27 across independent test sessions. Finally, we assessed the diagnostic accuracy of the RDMC score
28 when differentiating between individuals with and without cognitive impairment in a memory clinic
29 sample.

30

1 **Materials and Methods**

2 **Participants and neuropsychological assessments**

3 DELCODE is an observational longitudinal memory clinic-based multicenter study in Germany, with
4 participants aged 60 years and older, that either have mild dementia of the Alzheimer's type,
5 amnesic mild cognitive impairment (MCI), subjective cognitive decline (SCD), or are asymptomatic
6 healthy controls (HC). The detailed study design of DELCODE is reported in ³³. The remote mobile
7 monitoring add-on study started in April 2019 after a separate approval by the ethical committees of
8 each participating site. The annual neuropsychological testing in DELCODE included the PACC5 ⁵ and
9 other assessments reported in full in ³³. The PACC5 z-score was calculated as the mean performance
10 z-score across the MMSE ³⁴, a 30 item cognitive screening test, the WMS-R Logical Memory Delayed
11 Recall ³⁵, a test of delayed (30 min) story recall, the Digit-Symbol Coding Test (DSCT; 0–93) ³⁶, a test of
12 memory, executive function and processing speed, the Free and Cued Selective Reminding Test–Free
13 Total Recall (FCSRT96; 0–96) ³⁷, a test of free and cued recall of newly learned associations, and the
14 Category Fluency Test, a test of semantic memory and executive function. The z-scores for the PACC5
15 elements were derived using the mean and standard deviation of HC and SCD from the baseline visit
16 of the entire DELCODE study sample. A PACC5 composite score was calculated when at least three of
17 its five components were available while making sure that at least the MMSE, one memory measure
18 and either category fluency or DSCT were included. In the DELCODE cohort, the clinical labels (HC,
19 SCD, MCI) were established at the baseline assessment of each participant and follow-up diagnoses
20 have been established in April 2021 (Stark et al., submitted). At the Memory Clinic of the University
21 of Magdeburg, which is a DELCODE recruitment site, additional participants were prospectively
22 recruited according to the DELCODE neuropsychological protocol. Recruitment criterion for these
23 additional participants was clinically suspected MCI on the basis of progressive memory complaints.

24 WRAP is a longitudinal observational cohort study enriched with persons with a parental history of
25 probable AD dementia ³⁸. The neotiv add-on study began in April 2021. Neuropsychological testing in
26 WRAP included the PACC5 ⁵ and was completed every two years. The PACC5 z-score was calculated
27 as the mean performance z-score across the MMSE ³⁴, a 30 item cognitive screening test, the WMS-R
28 Logical Memory Delayed Recall ³⁵, a test of delayed (30 min) story recall, the Digit-Symbol Coding
29 Test (DSCT; 0–93) ³⁶, a test of memory, executive function and processing speed, the Rey Auditory
30 Verbal Learning Test Total Learning Trials (RAVLT-Total; 0-75)⁴⁹, a test of verbal learning, and the
31 Category Fluency Test (animals in WRAP, animals and food in DELCODE) a test of semantic memory
32 and executive function. The z-scores for the PACC5 elements were derived using the mean and
33 standard deviation of cognitively unimpaired participants from the baseline visit of the WRAP cohort.

34

1 **Study design**

2 All participants except patients with dementia were eligible if they owned a smartphone or tablet
3 with internet access that was technically suitable for the mobile app to be installed on and that they
4 could operate on their own. In addition, participants with sensory or motor problems or with
5 significant neurological illness that may interfere with the ability to complete tasks were not eligible.
6 DELCODE participants were asked at their regularly scheduled annual follow-up visit and memory
7 clinic patients during their in-clinic visit whether they would like to participate in the add-on study. If
8 they agreed, study personnel did lend support installing the app from the respective app store on the
9 participants' own mobile device, but participants received no further verbal instructions apart from a
10 printed manual. In WRAP, those who met eligibility criteria were sent a recruitment letter and the
11 consent form and were contacted over the telephone ~2 weeks thereafter and invited to participate.
12 If interested, a telephone screening was completed to confirm eligibility. Following screening, the
13 informed consent process was completed and verbal consent was obtained from the participant.
14 Instructions for how to download the app were emailed, and followed up over telephone to provide
15 additional assistance on downloading the app if needed.

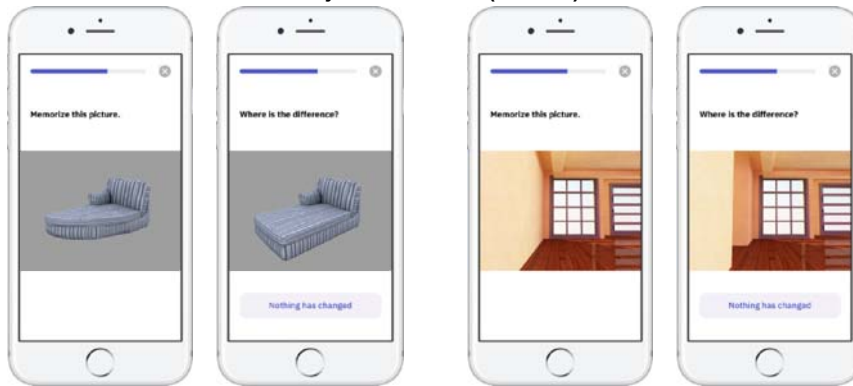
16 The Object-in-Room Recall test (ORR), the Mnemonic Discrimination Test for Objects and Scenes
17 (MDT-OS) and the Complex Scene Recognition Test (CSR) were completed by participants remotely
18 and unsupervised using their mobile device. In all cohorts, participants were asked to complete
19 memory assessments every two weeks. In WRAP, there was also an additional subgroup of
20 participants who were asked to complete a burst of the same number of memory tasks every other
21 month over four consecutive days. Each assessment consisted of a 2-phase session separated by a
22 short delay. The two phases were either two halves of mnemonic discrimination, or encoding and
23 retrieval phases of complex scene recognition and object-in-room recall (see details of the tasks
24 below). Every phase took around 5-10 minutes. Tests were remotely initiated via push notifications
25 which were sent at the same time-of-day as the registration, but participants had the possibility to
26 postpone test sessions. This approach was chosen not to urge participants to take the test under
27 suboptimal conditions such as distraction, fatigue or temporary illness. Daily reminders were sent via
28 push notifications until the respective task was completed, and the actual time of testing was
29 recorded. Before each test session, participants were reminded by the app to perform the test in a
30 quiet environment, to put their glasses on if needed and to ensure that their screen was bright
31 enough to see the pictures clearly. They also received a short practice session at the beginning of
32 each session. After each test session, participants were asked within the app if they were distracted
33 by things happening around them during the session (yes/no decision) and to rate their
34 concentration level and subjective performance (1=very bad, 2=bad, 3=middling, 4=good and 5=very

1 good). Hence, participants received the instructions for the cognitive tests remotely and performed
2 the test fully unsupervised.

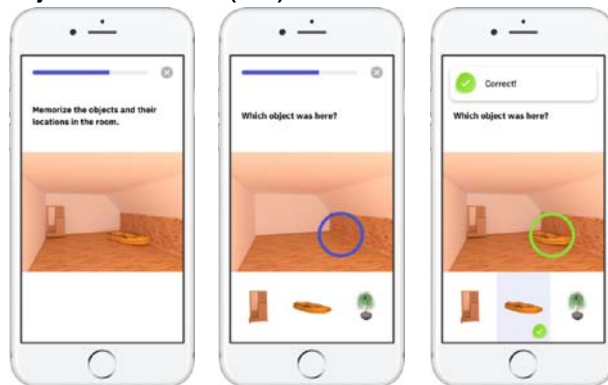
3 *Mnemonic Discrimination Test of Objects and Scenes (MDT-OS)*

4 Figure 1A shows the outline of the MDT-OS test ^{22,23,25,39}. In this test, participants are presented with
5 3D rendered computer-generated objects and scenes that are repeated either identically or in
6 slightly modified versions. Participants need to decide whether a repeated presentation shows a
7 repetition of the original picture or a modified version. They indicate their response by either tapping
8 on a button (for an exact repetition) or by tapping on the location of a change (for a modified
9 version). They see 32 object and 32 scene pairs where half are repeated or modified respectively.
10 One session was split into two phases and completed on two different days. The first phase was
11 presented as a one-back task while the second phase was presented as a two-back task. The test
12 provides a hit rate, a false alarm rate and a corrected hit rate for both the object and scene
13 condition. The averaged corrected hit rate across the scene and the object condition is used for the
14 RDMC.

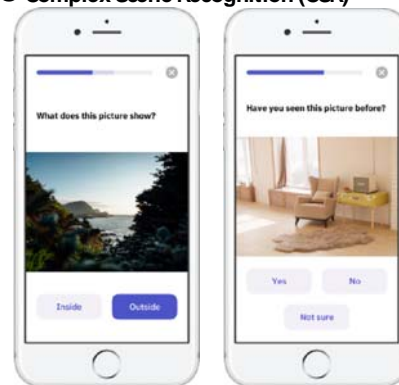
A Mnemonic Discrimination for Objects and Scenes (MDT-OS)



B Object-in-Room Recall (ORR)



C Complex Scene Recognition (CSR)



1

2

3

Figure 1: Memory tests constituting the RDMC score. Mnemonic Discrimination Test for Objects and Scenes (MDT-OS), Object-in-Room-Recall (ORR) test and Complex Scene Recognition Test (CSR).

4 Object-in-Room Recall Test (ORR)

5 Figure 1B shows the outline of the ORR-Test (for a discussion of the principles of pattern completion
6 on which this test is based see ²¹). In this test, participants were asked to memorize 3D rendered
7 computer-generated rooms, in which two 3D-rendered objects are placed. Participants recall which
8 object was placed at a specific location cued by a colored circle in the empty room in an immediate
9 recall test. They indicate their recall decision by tapping on one of three objects displayed below the
10 empty room: the correct object for that location, the object that was also present in the room but at
11 a different location (correct source distractor) and a completely unrelated object (incorrect source
12 distractor). They learn 25 such object-scene associations. After a delay of 30 minutes (DELCODE and
13 Memory Clinic) or 90 minutes (WRAP), participants are prompted to complete a delayed recall test.
14 However, as can be seen in the results section, the actual delay period based on the real time of test
15 completion was similar across cohorts. In the ORR test, the ability to recall the correct association is
16 graded and allows to separate correct episodic recall from incorrect source memory. Thus, correct
17 recall excludes the choice of an object that was present in the same room but at a different location
18 (wrong source memory for specific location) and an object that was not present in the room but
19 nevertheless associated with the objects belonging to the room during encoding (wrong source

1 memory for overall location). The test provides an immediate (0-25) and a delayed recall score (0-
2 25). For the RDMC we use the total recall, which is calculated as the average of the z-standardized
3 immediate and delayed recall score.

4 *Complex Scene Recognition Test (CSR)*

5 Figure 1C shows the outline of the CSR test^{28,29,40}. Participants see 60 photographic images depicting
6 indoor and outdoor scenes. For encoding, participants make a button-press decision whether the
7 presented scene is indoors or outdoors. After an instructed delay of 65 (DELCODE) or 90 (WRAP)
8 minutes, the participants are informed via push notification to complete the second phase of the
9 task. Here, the encoded images are presented together with 30 new images and participants make
10 old/new/uncertain recognition memory decisions. The test provides a hit rate, a false alarm rate and
11 a corrected hit rate. The corrected hit rate is used for the RDMC.

12 **Data handling**

13 Participants used the app with a pseudonymized ID (no identifying information or clinical information
14 was available or required in the mobile app) provided to them during an in-clinic visit or over the
15 telephone. The app data were transferred to the research centers in accordance with the General
16 Data Protection Regulation. The mobile app data were then related to the clinical data by the
17 research centers and in the following released to Principal Investigators and to neotiv GmbH. Data
18 handling and quality control procedures for the clinical DELCODE data are reported in³³.

20 **Quality Control Procedures**

21 For this manuscript, we analyzed data up until the data release on July 7th 2022 in DELCODE and
22 March 3rd 2022 in WRAP. Recruitment of participants in the Memory Clinic Magdeburg was
23 performed between October 2020 and January 2022. Regarding the sessions from the first wave,
24 meaning each very first assessment of CSR, MDT-OS and ORR, 8% of test sessions exceeded the
25 threshold for missing responses (maximum of 20%) and 26.5% of test sessions exceeded the
26 maximum length of the delay period (180 minutes) before filtering. Thus, these sessions were
27 excluded during quality assessment. Excluded test sessions were replaced by valid subsequent
28 sessions where possible. As a result, 82% of test sessions we report here were from the first wave
29 and 18% from subsequent test sessions.

30 **Statistical analysis**

31 All statistical analyses were performed in R (R Core Team, 2020). We correlated the RDMC score with
32 in-clinic neuropsychological assessments to assess construct validity using the Pearson correlation
33 coefficient. Multiple regression models were used to assess the relationship with age, sex and years

1 of education on the PACC5 as well as the RDMC. We conducted these analyses within the sample
2 from the DELCODE study and Memory Clinic of the University of Magdeburg, given that a PACC5 score
3 with slightly different elements was used in the WRAP cohort. In addition, we assessed the influence
4 of the Time-to-Retrieval and the screen size of the mobile device on the individual components of
5 the RDMC as well as on the RDMC itself. We also assessed retest reliability using the Pearson
6 Correlation Coefficient and the Intraclass Correlation Coefficient. Diagnostic accuracy and receiver
7 operating characteristic (ROC) analyses were performed using the pROC package⁴¹. A cross-validated
8 Area under the Curve (cvAUC) was derived from 5-fold cross-validation. Logistic regression models
9 including participant age, sex and years of education were used to compare models containing the
10 RDMC to models only containing demographic information.

11 **Data availability**

12 Data, study protocol and biomaterials can be shared with partners based on individual data and
13 biomaterial transfer agreements.

14

15

1 Results

2 Participant characteristics and recruitment

3 Here we considered the first 199 study participants who completed at least one session of each of
4 the three cognitive tests (97 HC, 59 SCD, and 43 MCI). Following quality assurance as described
5 above, 143 individuals could be included who contributed at least one valid test session per
6 paradigm.

7 We calculated a PACC5 cut-off score across all non-demented participants in the DELCODE and WRAP
8 cohorts baseline assessment, respectively, that distinguished MCI from cognitively unimpaired
9 participants (HC and SCD) prioritising sensitivity > 0.8, and resulting in a cut-off of -0.515 for
10 DELCODE and -0.981 for WRAP. In order to make sure to use the latest information on participant's
11 cognitive status, cognitive impairment was then defined as either an MCI diagnosis (at the baseline
12 or follow-up assessment) or a PACC5 score suggestive of mild cognitive impairment at the closest
13 follow-up session to the app-based assessment. This resulted in cognitively unimpaired (CU n=105)
14 and cognitively impaired participants (CI n=38; see table 1 for participants' characteristics).

15 **Table 1:** Participant demographics of the entire sample

	HC (N=78)	SCD (N=40)	MCI (N=25)	CU (N=105)	CI (N=38)	Total (N=143)
Age (years)	68.2 (5.47)	69.2 (7.67)	69.2 (6.79)	67.9 (6.01)	70.7 (6.92)	68.6 (6.36)
Education (years)	15.9 (2.82)	14.6 (2.64)	13.9 (2.49)	15.7 (2.79)	13.9 (2.55)	15.2 (2.82)
Sex (female)	67.9 %	52.5 %	36 %	62.9 %	44.7 %	58 %
MMSE	29.5 (0.72)	29.4 (0.9)	26.9 (2.74)	29.6 (0.69)	27.5 (2.41)	29 (1.64)
RDMC	0.01 (0.67)	-0.21 (0.6)	-1.03 (0.69)	0 (0.65)	-0.87 (0.66)	-0.23 (0.76)

16
17
18
19

**displays mean values (standard deviations) unless otherwise stated*

†Abbreviations: N, number of participants; HC, Healthy Controls; SCD, subjective cognitive decline; MCI, mild cognitive impairment; MMSE, mini-mental state examination; CU and CI, cognitively (un)impaired based on clinical diagnosis or the most recent PACC5.

20 Contextual factors

21 Across all three cognitive tests, participants reported high concentration levels during the task (mean
22 = 3.99, scale 1-5, which translates to good concentration), and moderately high subjectively rated
23 task performance (mean = 3.51, scale 1-5 which translates to middling subjectively rated
24 performance). While concentration levels were similar across tasks (3.64, 4.08, 4.23 for MDT-OS,
25 ORR and CSR respectively), subjective performance indicated higher task difficulty for the MDT-OS
26 (2.9) compared to ORR and CSR (3.66 and 3.97 respectively). In addition, participants reported no
27 distractions during their test sessions in 92% of the tasks (MDT-OS: 90%, ORR: 92%, CSR: 96%).

28 Following filtering, the time between encoding and retrieval in the ORR and CSR tests was on average
29 67 minutes (SD = 36) and 92 minutes (SD = 23) respectively. In DELCODE, participants were invited to
30 the retrieval phase of the ORR after 30 minutes, and their actual mean delay was 49 minutes, while
31 they were invited to the CSR retrieval after 65 minutes, and completed it on average after a delay of

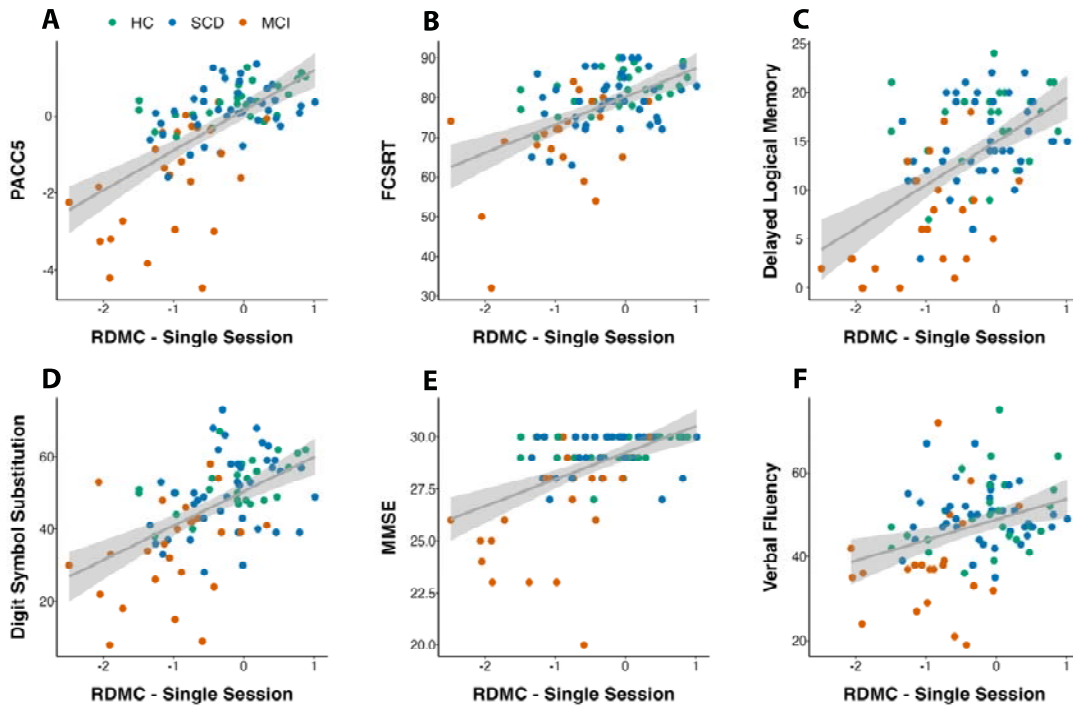
1 82 minutes. In WRAP, participants were invited to the retrieval phases of both paradigms after 90
2 minutes and completed it on average after 97 minutes and 101 minutes for the ORR and CSR task
3 respectively. Mobile devices had a screen diagonal between 10.2 – 32.9 cm (mean 16 cm, SD = 5.5)
4 indicating the use of smartphones as well as tablet computers.

5 **Development of the Remote Digital Memory Composite**

6 We built the RDMC using equal weights where each component (each of the three cognitive tests)
7 had the same weight. While the CSR only provides a corrected hit rate from the delayed recall, the
8 ORR and the MDT provide two outcomes. In the ORR, there is an immediate as well as a delayed
9 recall while the MDT comes in two task conditions, one corrected hit rate for scenes and one for
10 objects^{10,15}. All individual components (ORR-Im, ORR-Del, MDT-O, MDT-S and CSR) were z-
11 standardized using the mean and standard deviation of the cognitively unimpaired participants (CU).
12 For the RDMC, we then calculated the z-scored mean across ORR-Im and ORR-Del (TotalRecall), the z-
13 scored mean score across MDT-O, MDT-S (TotalCorrectedHitRate) and the z-scored corrected hit rate
14 of the CSR. The resulting three z-scores were averaged to derive the final RDMC score. The retest
15 reliability between two independent time points was good ($r = 0.8$, $p < .001$; ICC = 0.8).

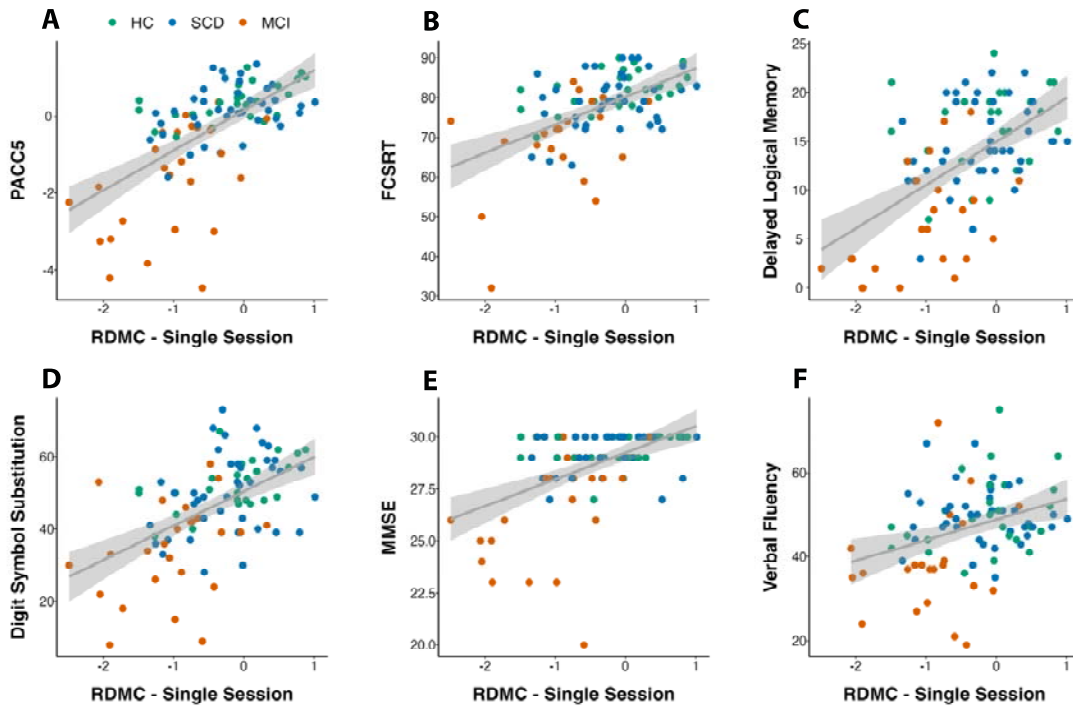
16 **Relationship between the RDMC and the PACC5**

17 In order to assess construct validity, we used neuropsychological data from the closest-in-time in-
18 clinic visit in the DELCODE study (to the mobile app add-on study) and Memory Clinic to perform a
19 correlation analysis between the RDMC and the PACC5 score as well as its individual elements. The
20 average time interval between the in-clinic visits and the remote app assessments was 80 days. The
21 first RDMC correlated highly ($r = .62$, $p < .001$) with the closest-in-time in-clinic PACC5 scores (see



1
 2 Figure 2). When considering only participants with memory complaints, meaning those that were
 3 referred to the memory clinics by their general practitioner and fulfilled either SCD or MCI criteria,
 4 the construct validity of the RDMC remained high ($r = .62, p < .001$). The construct validity in
 5 individuals without memory complaints (HC) was similar ($r = .59, p = .001$). We used hierarchical
 6 multiple regression models to test whether each element of the RDMC (ORR-Total, MDT-OS and CSR)
 7 added significantly to predicting the PACC5 score. Model comparisons using the Akaike Information
 8 Criterion (AIC) indicated a significant effect for each predicting component. In addition, we assessed
 9 the relationship of the RDMC with each of the individual elements of the PACC5. The RDMC
 10 correlated strongest with the memory measures, the Logical Memory Delayed Recall ($r = 0.55, p < 0.001$)
 11 and the FCSRT96 ($r = 0.53, p < 0.001$) but also with the DSCT ($r = 0.54, p < 0.001$). As expected,
 12 we found weaker relationships with the MMSE ($r = 0.49, p < 0.001$) and verbal fluency ($r = 0.34, p < 0.001$).
 13

14



1
2 *Figure 2: Construct validity of the composite score. Correlation between the RDMC (first test) and the closest-in-time (A) DELCODE PACC5*
3 *assessment as well as (B-F) all individual PACC5 elements. HC, Healthy Controls; SCD, subjective cognitive decline; MCI, mild cognitive*
4 *impairment; FCSRT, Free and Cued Selective Reminding Test; MMSE, Mini Mental State Exam.*

5 Relationship with Age, Sex, Education and other factors

6 Multiple regression models with age, sex, years of education, time-to-retrieval and screen size were
7 calculated to identify the relationships with individual components of the RDMC. For CSR, only years
8 of education was a significant predictor where higher education was associated with better
9 performance ($\beta_{\text{education}} = 0.12, p < 0.001$; $\beta_{\text{age}} = -0.007, p = 0.6$; $\beta_{\text{sex}} = -0.29, p = 0.1$; $\beta_{\text{delay}} = 0.19, p = 0.38$;
10 $\beta_{\text{screen}} = -0.003, p = 0.839$). For MDT-OS, only age was a significant predictor where higher age was
11 associated with worse task performance ($\beta_{\text{age}} = -0.027, p = 0.02$; $\beta_{\text{sex}} = -0.19, p = 0.204$; $\beta_{\text{education}} = 0.02,$
12 $p = 0.464$; $\beta_{\text{screen}} = -0.02, p = 0.159$). For the ORR, age and years of education were associated with task
13 performance ($\beta_{\text{age}} = -0.05, p < 0.001$; $\beta_{\text{education}} = 0.06, p = 0.049$; $\beta_{\text{sex}} = -0.1, p = 0.531$; $\beta_{\text{delay}} = 0.21,$
14 $p = 0.139$; $\beta_{\text{screen}} = 0.009, p = 0.518$). With respect to the RDMC, more years of education ($\beta_{\text{education}} =$
15 $0.09, p = 0.002$) as well as younger age ($\beta_{\text{age}} = -0.04, p = 0.002$) were associated with higher task
16 performance, but not sex. In comparison, the PACC5 was associated with sex ($\beta_{\text{sex}} = -0.66, p < 0.001$),
17 years of education ($\beta_{\text{education}} = 0.09, p < 0.001$) and age ($\beta_{\text{age}} = -0.03, p = 0.03$), i.e., women and
18 participants with more years of education and those that were younger obtained a higher PACC5
19 score.

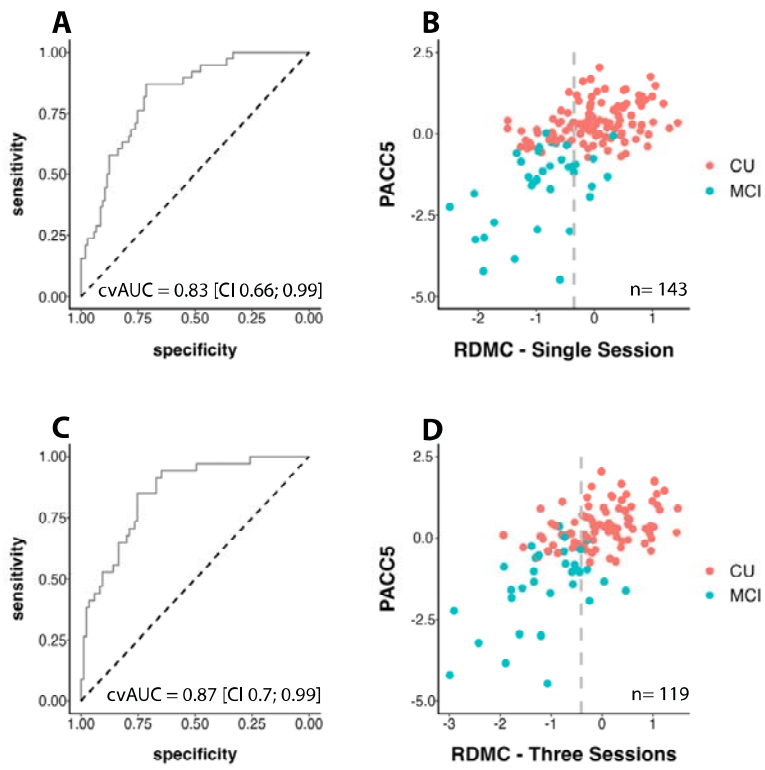
1 **Diagnostic accuracy**

2 The RDMC score differentiated CI and CU individuals with a cross-validated Area under the Curve
3 (cvAUC) of 0.83 [CI 0.66; 0.99] resulting in a sensitivity and specificity of 0.82 and 0.72 respectively
4 (optimal cut-off = -0.35). The ROC curve and classifications with the cut-off are presented in **Error!**
5 **Reference source not found.**A. Alternatively, considering only MCI patients or only participants with
6 a PACC5 score below the MCI-grade cognitive impairment cut-off as cognitively impaired yielded very
7 similar cvAUCs of 0.85 [CI 0.66; 0.99] and 0.84 [CI 0.67; 0.98] respectively. In order to test whether
8 all three components of the RDMC are needed to achieve the best possible classification, we
9 performed individual AUC analyses for each individual component (ORR = 0.78; MDT-OS = 0.78; CSR
10 = 0.72) as well as for alternative composite scores covering all possible combinations of only two test
11 paradigms (ORR/MDT-OS: = 0.82; ORR/CSR = 0.8; MDT-OS/CSR = 0.79). No individual component or
12 composite combining two components could however reach an AUC of 0.83.
13 In addition, we used logistic regression models to test how a model containing the RDMC would
14 compare to a model containing only participant age, sex and years of education. The model that
15 included the RDMC as predictor (Tjur's $R^2 = 0.325$; AIC = 126.4) fit the data significantly better than
16 the basic model that included participants age, sex, and years of education (Tjur's $R^2 = 0.160$; AIC =
17 151.4) and outperformed its diagnostic accuracy (AUC: 0.85 compared to AUC: 0.74). A maximum
18 sensitivity of 84% could be achieved given at least 70% specificity, and a maximum specificity of 85%
19 could be achieved given at least 70% sensitivity.

20 **Health Care Scenario**

21 Regarding potential challenges in broader use within health care, we designed an additional analysis
22 schedule that would improve reliability and robustness above and beyond the provision of a single
23 test. For this purpose, we considered 4 repetitions of each test where the worst test performance of
24 each paradigm is removed. This provides redundancy to account for distractions and interruptions
25 that might appear and allows averaging across up to three test sessions to increase the
26 representativeness of the overall test result. Therefore, we only included participants who provided
27 up to 4 valid test sessions of each paradigm, removed each participant's worst performance per
28 paradigm, calculated a mean score for each outcome and the respective z-score regarding the mean
29 and standard deviation of the CU group before we calculated a composite by averaging across the 3
30 resulting means. For this analysis, 119 participants (85 CU and 34 CI) could be included. In this
31 scenario, the RDMC score differentiated cognitively impaired (CI) and cognitively unimpaired
32 individuals (CU) with a cross validated cvAUC of 0.87 [CI 0.7; 0.99] and a sensitivity and specificity of
33 0.85 and 0.74 respectively (optimal cut-off = -0.41). The ROC curve and classifications with the cut-off
34 are presented in **Error! Reference source not found.**C.

1



2

3

4

5

6

Figure 3: Diagnostic accuracy across Single Session and Three Session regimens. (A) and (C) Receiver Operating Characteristic (ROC) curve showing diagnostic accuracy for the detection of MCI-grade cognitive impairment based on the RDMC. (B) and (D) Scatter plot showing the optimal RDMC cut-off with CU and CI in different colors – optimal cut-offs at -0.35 and -0.41 indicated by the dashed grey line, dots to the left are classified as cognitively impaired, and dots to the right as cognitively unimpaired.

1 **Discussion**

2 We developed an unsupervised, self-administered and remote digital memory composite based on a
3 single test session from each of three equally weighted memory tests (ORR, MDT-OS and CSR), which
4 were performed remotely and fully unsupervised. The resulting RDMC showed high construct validity
5 in relation to the PACC5 score, especially with its elements measuring memory, and good retest
6 reliability in a subsample that performed each test twice. Finally, the RDMC could differentiate
7 between individuals with and without MCI-grade impairment with an AUC of 0.83 demonstrating
8 high diagnostic accuracy. An additional regimen with up to three individual test sessions per memory
9 test with the aim to provide redundancy to account for potential distractions or interruptions while self-
10 administering the tests yielded an AUC of 0.87.

11 In terms of construct validity, we found a strong correlation between the RDMC and the PACC5, as
12 well as its individual elements. This correlation was present in both cognitively healthy older adults
13 and those with cognitive impairment indicating that the correlation was not driven by collating an
14 impaired and a non-impaired group as two extremes into the same analysis. The fact that the
15 correlation also held within those with cognitive symptoms (SCD and MCI) and that all of these
16 individuals were recruited on the basis of referrals (as opposed to recruitment advertisements)
17 provides first evidence that may support construct validity in a health care setting. In terms of
18 reliability, we found a high correlation between two different instances of the RDMC conducted
19 within a time interval of ~6 weeks.

20 The RDMC identified individuals with an MCI-grade impairment with an AUC between 0.83 (single
21 self-administration of each test) and 0.87 (three self-administrations of each test). This allowed to
22 identify individuals with MCI-grade impairment with a sensitivity of 0.82 and a specificity of 0.72 on
23 the basis of a single assessment of the RDMC. This is comparable or higher than several other
24 recently reported unsupervised ⁴², or in-clinic and supervised digital cognitive assessments ⁴³⁻⁴⁶.
25 Importantly, however, several earlier approaches reported outcomes by comparing MCI patients
26 against samples that exclusively consisted of healthy asymptomatic older adults ⁴²⁻⁴⁷. In health care
27 settings, the main challenge is to identify significant impairment within individuals with memory
28 concerns. Therefore, we believe that our focus on memory complainers and the inclusion of a large
29 number of SCD patients who sought medical advice (hence were not recruited through
30 advertisements) in this sample is a major advantage in the validation and critical for future
31 application.

32

33 Usability is a major limitation for mobile device-based assessments of cognition in old age and
34 particularly in preclinical and prodromal AD. While participants were assisted during the installation
35 of the neotiv mobile app and received a printed manual at the time when their consent was obtained

1 at the memory clinic, all three tests were conducted fully remotely and without supervision.
2 Participants received a push-notification on their mobile device each time a test was available to be
3 performed. All instructions and guidance for performing the tests was provided in the app and
4 included a training run of each test. Participants were also instructed to seek a quiet place where
5 they would not be distracted and after each test were inquired through a questionnaire about
6 whether they could perform the test without distraction. Our results show that participants were
7 able to perform the tests in a distraction-free context, given that they reported no distraction in 92%
8 of test sessions and on average high concentration levels. In addition, they reported on average
9 medium-to-good subjective task difficulty across memory tests indicating that while the remote
10 cognitive assessments were challenging, they were neither too easy nor too difficult. Finally, the
11 adherence to the mobile tests was quite good, with a maximum of 20% of participants dropping out
12 after 6 tests within a period of at least 12 weeks. Our results, thus, indicate that it is possible to
13 achieve the level of usability that is required to perform a detailed assessment of episodic memory
14 fully remotely and without any supervision in a memory complainer cohort.

15 The total testing time required to obtain the RDMC (a single run of ORR, CSR and MDT-OS) was ~45
16 minutes. As each test consists of two phases, the 45 minutes result from 6 separate 5–10-minute
17 sessions on 3 different days in separate weeks. In principle, all three tests could be obtained within a
18 single day. However, we decided not to enforce the shortest possible acquisition time. Instead, we
19 decided to leverage the opportunities of mobile and unsupervised testing to achieve a more
20 meaningful implementation. To that end we stretched out the assessment over several weeks to
21 enable a more representative sampling of memory performance over time and thereby be less
22 vulnerable to day-to-day performance fluctuations. We used the spaced testing to ease stress for the
23 patients and eliminate potential implementation problems that would lead to worries and
24 complaints by those patients that felt being tested on a bad day. In an additional regimen, we
25 extended this approach and included even more individual test sessions per paradigm with the aim
26 to increase the robustness of the approach which yielded a higher diagnostic accuracy. Thus, in
27 either scenario, the RDMC reflects memory performance over a period of several weeks rather than
28 a single day, something that would be very difficult to implement with a supervised testing approach.
29 Episodic memory tests such as the FCSRT ⁴⁸ and the other elements of the PACC5 place heavy
30 demands on verbal abilities. This significantly challenges applicability in international trials or in
31 conditions with mild language disorders (e.g., due to a vascular event or primary progressive aphasia)
32 ⁴. The three tests of the RDMC established here, however, are not dependent on verbal abilities such
33 as naming, word-finding or pronunciation and thereby facilitate testing across different dementia
34 syndromes and subtypes of AD as well as in international comparisons. Furthermore, the RDMC
35 shows no overlap with the PACC5 in terms of the paradigm and modalities tested so that there would

1 be no interference with a memory-clinic or trial-based PACC5 or related neuropsychological
2 assessment following case-finding.

3 In the currently used implementation of the ORR and CSR tests, we did not strictly reinforce
4 adherence to the planned retrieval-delay intervals of these tests, which led some individuals to
5 perform recall and recognition assessments after longer than planned delays. Given that the length
6 of the delay period is associated with task performance, we excluded sessions with significantly
7 extended delay periods ¹⁰. However, this led to a significant exclusion of participants in our study.
8 Thus, in future implementations of the RDMC, it will be beneficial to optimize usability aspects to a
9 stricter reinforcement of delay intervals.

10 This study has a number of shortcomings. First, while our results are based on three cohorts from
11 two different countries, this represents a single study with a modest sample size and thus needs to
12 be cross-validated across independent cohorts. Second, while we could show evidence for limited
13 relationships between the RDMC and sample demographics, a large and diverse normative sample is
14 needed in order to calculate demographically-adjusted scores for various covariates. Finally, our
15 sample size was not yet sufficient to assess the relationship with AD biomarkers and the diagnostic
16 accuracy of biomarker stratified subgroups.

17 Taken together, the high construct validity and retest reliability of the RDMC score paves the way for
18 implementing mobile app-based remote assessment in clinical studies as well as in health care. The
19 current data indicate that the RDMC can facilitate case-finding whenever the main question is about
20 an individual's MCI-grade cognitive impairment. Future studies need to show whether repeated
21 assessments of the RDMC over time will be sensitive to cognitive change.

22 **Acknowledgments**

23 We want to thank all participants for their participation in the study.

24 **Competing Interests**

25 DB reports personal fees from neotiv GmbH during the conduct of the study. OVB, IH, MHN and ND
26 are full employees of neotiv GmbH and report personal fees from neotiv GmbH during the conduct of
27 the study. ST reports Advisory Board Membership for Biogen, Roche and Grifols. JW reports personal
28 fees from Abbott, Biogen, Boehringer-Ingelheim, Eli Lilly, MSD SHARP Dohme, Roche, Janssen Cilag,
29 Immungenetics, Roboscreen and Pfizer during the conduct of the study. SCJ has in the past two years
30 served on advisory boards to Roche Diagnostics, Prothena, AlzPath, Merck and Eisai. His institution
31 has received research funding from Cerveau Technologies. ED reports personal fees from neotiv
32 GmbH during the conduct of the study and personal fees from Biogen, Roche, Lilly, Eisai and UCL
33 Consultancy as well as non-financial support from Rox Health outside the submitted work. DB and ED

1 are co-founders of neotiv GmbH and own company shares. WG, XG, JG, MHN, MB, ASp, AS, KB, MW,
2 RP and FJ, LC, KB, have nothing to disclose.

3 **Funding**

4 The sponsors had no role in the design and conduct of the study; in the collection, analysis, and
5 interpretation of data; in the preparation of the manuscript; or in the review or approval of the
6 manuscript.

7 **Author Contribution**

8 DB and ED were involved in the conceptualization of the study and the preparation of the original
9 draft. IH, MHN, OVB and ND were involved in quality assurance of the remote data collection. DB
10 curated and analyzed the data. WG, LC, KB, MB, AS, KB, RP, AS, ST, JW, SJ, MW, FJ and ED were
11 involved in data collection and participant recruitment. XG and JG contributed analysis tools. All
12 authors reviewed and edited the manuscript.

References

1. Petrazzuoli, F. *et al.* Brief Cognitive Tests Used in Primary Care Cannot Accurately Differentiate Mild Cognitive Impairment from Subjective Cognitive Decline. *J Alzheimer's Dis* 75, 1191–1201 (2020).
2. Xie, J. *et al.* Initial Memory Deficit Profiles in Patients with a Cerebrospinal Fluid Alzheimer's Disease Signature. *J Alzheimer's Dis* 41, 1109–1116 (2014).
3. Tulving, E. EPISODIC MEMORY: From Mind to Brain. *Annu Rev Psychol* 53, 1–25 (2002).
4. Costa, A. *et al.* The need for harmonisation and innovation of neuropsychological assessment in neurodegenerative dementias in Europe: consensus document of the Joint Program for Neurodegenerative Diseases Working Group. *Alzheimer's Research & Therapy* 9, 27 (2017).
5. Papp, K. V., Rentz, D. M., Orlovsky, I., Sperling, R. A. & Mormino, E. C. Optimizing the preclinical Alzheimer's cognitive composite with semantic processing: The PACC5. *Alzheimer's & Dementia: Translational Research & Clinical Interventions* (2017) doi:10.1016/j.trci.2017.10.004.
6. Donohue, M. C. *et al.* The Preclinical Alzheimer Cognitive Composite: Measuring Amyloid-Related Decline. *JAMA Neurology* 71, 961–970 (2014).
7. Gold, M. *et al.* Digital technologies as biomarkers, clinical outcomes assessment, and recruitment tools in Alzheimer's disease clinical trials. *Alzheimer's & Dementia: Translational Research & Clinical Interventions* 4, 234–242 (2018).
8. Koo, B. M. & Vizer, L. M. Mobile Technology for Cognitive Assessment of Older Adults: A Scoping Review. *Innovation in Aging* 3, (2019).
9. Öhman, F., Hassenstab, J., Berron, D., Schöll, M. & Papp, K. V. Current advances in digital cognitive assessment for preclinical Alzheimer's disease. *Alzheimer's Dementia Diagnosis Assess Dis Monit* 13, e12217 (2021).
10. Berron, D. *et al.* Feasibility of Digital Memory Assessments in an Unsupervised and Remote Study Setting. *Frontiers Digital Heal* 4, 892997 (2022).
11. Nicosia, J. *et al.* Bridging the Technological Divide: Stigmas and Challenges With Technology in Digital Brain Health Studies of Older Adults. *Frontiers Digital Heal* 4, 880055 (2022).
12. Nicosia, J. *et al.* Unsupervised high-frequency smartphone-based cognitive assessments are reliable, valid, and feasible in older adults at risk for Alzheimer disease. doi:10.31234/osf.io/wtsyn.
13. Papp, K. V. *et al.* Unsupervised mobile cognitive testing for use in preclinical Alzheimer's disease. *Alzheimer's Dementia Diagnosis Assess Dis Monit* 13, (2021).
14. Lancaster, C. *et al.* Evaluating the Feasibility of Frequent Cognitive Assessment Using the Mezurio Smartphone App: Observational and Interview Study in Adults With Elevated Dementia Risk. *Jmir Mhealth Uhealth* 8, e16142 (2020).
15. Öhman, F. *et al.* Unsupervised mobile app-based cognitive testing in a population-based study of older adults born 1944. *Frontiers Digital Heal* 4, 933265 (2022).

16. Thompson, L. I. *et al.* A highly feasible, reliable, and fully remote protocol for mobile app-based cognitive assessment in cognitively healthy older adults. *Alzheimer's Dementia Diagnosis Assess Dis Monit* 14, e12283 (2022).
17. Grothe, M. J. *et al.* In vivo staging of regional amyloid deposition. *Neurology* 89, 2031–2038 (2017).
18. Berron, D. *et al.* Early stages of tau pathology and its associations with functional connectivity, atrophy and memory. *Brain* 144, awab114- (2021).
19. Berron, D. *et al.* Strong Evidence for Pattern Separation in Human Dentate Gyrus. *The Journal of Neuroscience* 36, 7569–7579 (2016).
20. Bakker, A., Kirwan, B. C., Miller, M. & Stark, C. E. Pattern Separation in the Human Hippocampal CA3 and Dentate Gyrus. *Science* 319, 1640–1642 (2008).
21. Grande, X. *et al.* Holistic recollection via pattern completion involves hippocampal subfield CA3. *The Journal of neuroscience*: the official journal of the Society for Neuroscience (2019) doi:10.1523/JNEUROSCI.0722-19.2019.
22. Berron, D. *et al.* Age-related functional changes in domain-specific medial temporal lobe pathways. *Neurobiology of aging* 65, 86–97 (2018).
23. Maass, A. *et al.* Alzheimer's pathology targets distinct memory networks in the ageing brain. *Brain*: a journal of neurology 142, 2492–2509 (2019).
24. Maass, A., Berron, D., Libby, L. A., Ranganath, C. & Düzel, E. Functional subregions of the human entorhinal cortex. *eLife* 4, e06426 (2015).
25. Berron, D. *et al.* Higher CSF tau levels are related to hippocampal hyperactivity and object mnemonic discrimination in older adults. *The Journal of neuroscience*: the official journal of the Society for Neuroscience (2019) doi:10.1523/JNEUROSCI.1279-19.2019.
26. Schröder, T., Haak, K. V., Jimenez, N. I., Beckmann, C. F. & Doeller, C. F. Functional topography of the human entorhinal cortex. *eLife* 4, e06738 (2015).
27. Grande, X., Berron, D., Maass, A., Bainbridge, W. & Düzel, E. Content-specific vulnerability of recent episodic memories in Alzheimer's disease. *Neuropsychologia* 107976 (2021) doi:10.1016/j.neuropsychologia.2021.107976.
28. Düzel, E. *et al.* CSF total tau levels are associated with hippocampal novelty irrespective of hippocampal volume. *Alzheimer's Dementia Amsterdam Neth* 10, 782–790 (2018).
29. Düzel, E., Schütze, H., Yonelinas, A. P. & Heinze, H. Functional phenotyping of successful aging in long-term memory: Preserved performance in the absence of neural compensation. *Hippocampus* 21, 803–814 (2011).
30. Horner, A. J. *et al.* A Rapid, Hippocampus-Dependent, Item-Memory Signal that Initiates Context Memory in Humans. *Current Biology* 22, (2012).
31. Düzel, E. *et al.* Comparative electrophysiological and hemodynamic measures of neural activation during memory-retrieval. *Hum Brain Mapp* 13, 104–123 (2001).
32. Düzel, E. *et al.* Task-related and item-related brain processes of memory retrieval. *Proc National Acad Sci* 96, 1794–1799 (1999).

33. Jessen, F., Spottke, A. & Alzheimer's ..., B. H. Design and first baseline data of the DZNE multicenter observational study on predementia Alzheimer's disease (DELCODE). (2018).
34. Folstein, M. F., Folstein, S. E. & McHugh, P. R. "Mini-mental state" A practical method for grading the cognitive state of patients for the clinician. *J Psychiatr Res* 12, 189–198 (1975).
35. Wechsler, D. & Stone, C. P. *Wechsler Memory Scale-revised*. (Psychological Corporation, 1987).
36. Wechsler, D. *WAIS-R Manual: Wechsler Adult Intelligence Scale-Revised*. (Psychological Corporation, 1981).
37. Grober, E., Hall, C., Sanders, A. E. & Lipton, R. B. FREE AND CUED SELECTIVE REMINDING DISTINGUISHES ALZHEIMER'S DISEASE FROM VASCULAR DEMENTIA. *J Am Geriatr Soc* 56, 944–946 (2008).
38. Johnson, S. C. *et al.* The Wisconsin Registry for Alzheimer's Prevention: A review of findings and current directions. *Alzheimer's & Dementia: Diagnosis, Assessment & Disease Monitoring* 10, (2018).
39. Güsten, J., Ziegler, G., Düzel, E. & Berron, D. Age impairs mnemonic discrimination of objects more than scenes: a web-based, large-scale approach across the lifespan. *Cortex* (2021) doi:10.1016/j.cortex.2020.12.017.
40. Bainbridge, W. A. *et al.* Memorability of photographs in subjective cognitive decline and mild cognitive impairment: Implications for cognitive assessment. *Alzheimer's & dementia (Amsterdam, Netherlands)* 11, 610–618 (2019).
41. Robin, X. *et al.* pROC: an open-source package for R and S+ to analyze and compare ROC curves. *Bmc Bioinformatics* 12, 77 (2011).
42. Mackin, R. S. *et al.* Unsupervised online neuropsychological test performance for individuals with mild cognitive impairment and dementia: Results from the Brain Health Registry. *Alzheimer's Dementia Diagnosis Assess Dis Monit* 10, 573–582 (2018).
43. Alden, E. C. *et al.* Diagnostic accuracy of the Cogstate Brief Battery for prevalent MCI and prodromal AD (MCI A+T+) in a population-based sample. *Alzheimer's Dementia* 17, 584–594 (2021).
44. Kalafatis, C. *et al.* Validity and Cultural Generalisability of a 5-Minute AI-Based, Computerised Cognitive Assessment in Mild Cognitive Impairment and Alzheimer's Dementia. *Frontiers Psychiatry* 12, 706695 (2021).
45. Groppe, S. *et al.* A Rapid, Mobile Neurocognitive Screening Test to Aid in Identifying Cognitive Impairment and Dementia (BrainCheck): Cohort Study. *JMIR Aging* 2, e12615 (2019).
46. Ye, S. *et al.* BrainCheck: Validation of a Computerized Cognitive Test Battery for Detection of Mild Cognitive Impairment and Dementia. *Medrxiv* 2020.11.10.20229369 (2020) doi:10.1101/2020.11.10.20229369.
47. Maruff, P. *et al.* Clinical utility of the cogstate brief battery in identifying cognitive impairment in mild cognitive impairment and Alzheimer's disease. *Bmc Psychology* 1, 30 (2013).
48. Buschke, H. Cued recall in Amnesia. *J Clin Neuropsychol* 6, 433–440 (1984).
49. Schmidt, Michael. *Rey auditory verbal learning test: A handbook*. Vol. 17. Los Angeles, CA: Western Psychological Services, 1996.