

Impact of the COVID-19 pandemic on routine surveillance for adults with chronic hepatitis B virus (HBV) infection in the UK

Authors:

Cori Campbell^{1,2}, Tingyan Wang^{1,2}, David A Smith³, Oliver Freeman^{1,4}, Theresa Noble^{1,3}, Kinga A Várnai^{1,3}, Steve Harris^{1,5}, Hizni Salih¹, Gail Roadknight¹, Stephanie Little¹, Ben Glampson^{6,7}, Luca Mercuri^{6,7}, Dimitri Papadimitriou^{6,7}, Christopher R Jones⁸, Vince Taylor⁹, Afzal Chaudhry⁹, Hang Phan¹⁰, Florina Borca¹⁰, Josune Olza¹⁰, Frazer Warricker¹¹, Luis Romão¹², David Ramlakhan¹², Louise English¹², Paul Klenerman^{2,13}, Monique I. Andersson^{13,14}, Jane Collier¹⁵, Eleni Nastouli¹⁶, Salim I Khakoo¹⁷, William Gelson¹⁸, Graham S Cooke^{6,7,19}, Kerrie Woods^{1,3}, Jim Davies^{1,5}, Eleanor Barnes^{2,3}, Philippa C Matthews^{2,3,13*}

Affiliations:

1. NIHR Oxford Biomedical Research Centre, Oxford, UK
2. Nuffield Department of Medicine, University of Oxford, UK
3. NIHR Health Informatics Collaborative, Oxford University Hospitals NHS Foundation Trust, Oxford, UK
4. Nuffield Department of Population Health, University of Oxford, Oxford, UK
5. Department of Computer Science, University of Oxford, Oxford, UK
6. NIHR Health Informatics Collaborative, Imperial College Healthcare NHS Trust, London, UK
7. NIHR Imperial Biomedical Research Centre, London, UK
8. Department of Infectious Disease, Imperial College London, London, UK
9. Cambridge University Hospitals NHS Foundation Trust, Cambridge, UK
10. NIHR Southampton Biomedical Research Centre, University Hospital Southampton NHS Foundation Trust, Southampton, UK
11. University Hospital Southampton NHS Foundation Trust, Southampton, UK
12. University College London Hospitals NHS Foundation Trust, London, UK

13. Department of Infectious Diseases and Microbiology, Oxford University Hospitals NHS Foundation Trust, Oxford, UK
14. Nuffield Department of Clinical Laboratory Sciences, University of Oxford, Oxford, UK
15. Department of Hepatology, John Radcliffe Hospital, Headley Way, Headington, Oxford, UK
16. Department of Clinical Virology, UCLH, London, UK
17. School of Clinical and Experimental Sciences, Faculty of Medicine, University of Southampton, Southampton, UK
18. Cambridge Liver Unit, Cambridge University Hospitals NHS Foundation Trust, Cambridge, UK
19. Faculty of Medicine, Department of Infectious Disease, Imperial College London, UK

***Corresponding author:**

Prof Philippa C. Matthews,
Peter Medawar Building for Pathogen Research,
South Parks Rd,
Oxford,
OX1 3SY
p.matthews@doctors.org.uk

Keywords: hepatitis B virus, HBV, epidemiology, virology, viral hepatitis, COVID-19

Electronic word count:

Abstract: 125

Main text: 1632

Number of figures and tables: 2

Conflict of interest statement:

GC reports personal fees from Gilead and Merck Sharp & Dohme outside the submitted work. BG reports other from Imperial National Institute for Health Research (NIHR) Biomedical Research Centres (BRC), during the conduct of the study. EN reports grants from ViiV healthcare, grants from GlaxoSmithKline (GSK), grants from Gilead, outside the submitted work. Other authors have no conflict of interest.

Financial support statement:

This work has been conducted using National Institute for Health Research (NIHR) Health Informatics Collaborative (HIC) data resources and funded by the NIHR HIC, and has been supported by NIHR Biomedical Research Centres at Cambridge, Imperial, Oxford, Southampton, and University College London Hospitals. GSC is an NIHR research professor, EB is an NIHR senior investigator. PCM is funded by the Wellcome Trust (ref. 110110/Z/15/Z) and holds an NIHR Senior Fellowship award. CC is a doctoral student who receives partial doctoral funding from GlaxoSmithKline (GSK). FW is an NIHR funded ACF. The views expressed in this letter are those of the authors and not necessarily those of the National Health Service, the NIHR, or the Department of Health.

Author contributions: CC, TW, PM and EB were responsible for conceptualization, methodology design and writing and reviewing of the article. CC was responsible for formal analysis and investigation. DAS, OF, TN, KIV, SH, HS, GR, SL, BG, LM, DP, CRJ, VT, AC, HP, FB, JO, FW, LR, DR, LE, PK, MIA, JC, EN, SIK, WG, GSC, KW and JD were responsible for data curation. SIK and WG contributed to article reviewing/editing.

Abstract

Background and aims: To determine the impact of the COVID-19 pandemic on the population with chronic Hepatitis B virus (HBV) infection under hospital follow-up in the UK, we quantified the coverage and frequency of measurements of biomarkers used for routine surveillance (ALT and HBV viral load).

Methods: We used anonymised electronic health record data from the National Institute for Health Research (NIHR) Health Informatics Collaborative (HIC) pipeline representing five UK NHS Trusts.

Results: We report significant reductions in surveillance of both biomarkers during the pandemic compared to pre-COVID years, both in terms of the proportion of patients who had ≥ 1 measurement annually, and the mean number of measurements per patient.

Conclusions: Further investigation is required to determine whether these disruptions will be associated with increased rates of adverse chronic HBV outcomes.

Background:

The Coronavirus Disease 2019 (COVID-19) pandemic, caused by the severe acute respiratory syndrome coronavirus 2 (SARS-CoV-2), has resulted in over 4 million deaths worldwide (1). This reported mortality burden quantifies deaths directly attributed to COVID-19 but does not currently capture indirect disease impact arising as a result of diverted attention and resources.

In order to progress towards elimination targets for Hepatitis B virus (HBV) infection set by the World Health Organization (WHO) Global Health Sector Strategy (GHSS) on Viral Hepatitis (2) there is an urgent need for the improvement of surveillance and treatment coverage. In 2015 the WHO estimated that $<1\%$ of individuals with HBV infection were receiving antiviral treatment, and the GHSS on Viral Hepatitis set a target goal for 2030 to increase treatment coverage to 80% in treatment-eligible individuals with chronic HBV (CHB).

Once diagnosed, most individuals with CHB require regular surveillance. Decisions to treat CHB individuals with antiviral agents are made based on clinical characteristics using algorithms that combine laboratory markers of liver inflammation (typically alanine transferase, ALT), HBV DNA viral load (VL), elastography scores, ultrasound, and occasionally liver biopsy (3–5). Biopsy is recognised as a gold standard for fibrosis and cirrhosis assessment, but is rarely performed due to its invasiveness and cost (6). This places reliance on non-invasive techniques for assessment and risk stratification of

untreated patients (6,7). In those already receiving antiviral treatment, laboratory parameters are monitored to ensure that virologic suppression is achieved and maintained, and to provide surveillance for complications of infection and/or of treatment.

Regular monitoring of VL and liver enzymes is recommended, typically at intervals of 3-12 months, with enhanced surveillance among males at older age, those with biochemically active hepatitis, risk factors for hepatocellular carcinoma (HCC), complications of liver disease, recent diagnosis, or changing treatment plans (8,9). An annual follow-up schedule is typical for those in whom VL and liver enzymes are consistently low, without HBV or co-morbid complications, and with no indications for treatment.

The disruptive consequences of COVID-19 for antiviral treatment access, disease surveillance and other measures for achieving HBV elimination targets have been broadly described (10,11). However, HBV service impact has not yet been quantified on a large-scale using individual-level patient data that are representative of a specific population.

Methods:

We undertook longitudinal and cross-sectional analyses using routinely-collected individual-level secondary care data (including demographic and laboratory parameters) collected across five NHS Trusts in England by the National Institute for Health Research (NIHR) Health Informatics Collaborative (HIC), as previously described (12,13). HBV treatment data were available from three NHS Trusts.

We investigated how ALT and VL surveillance varied between pre-COVID (years 2016-2019) to COVID (year 2020 and part of 2021) in CHB patients. We calculated cumulative probabilities of undergoing ≥ 1 ALT and HBV DNA VL measurement each year using the Kaplan-Meier method, comparing probabilities across years using the log-rank test. We quantified the mean number of ALT and HBV DNA measurements per 100 patients, during pre-COVID and COVID years, with 95% CIs calculated using the normal distribution (whereby standard error (SE) is estimated by $\frac{s}{\sqrt{n}}$ with n denoting sample size and s denoting standard deviation). We compared surveillance metrics in patients on and off antiviral therapy. Official UK government COVID incidence data are presented (14).

Results:

- (i) Coverage of ALT and VL testing (proportion tested at least once a year)

We included 3498 patients in our overall sample for 2016; this increased year on year up to 4374 patients for 2020 (**Figure S1**). In 2016, 78.6% (95% CI 77.1-79.9%) of individuals with CHB had ALT measured on ≥ 1 occasion throughout the year; this significantly decreased to 57.0% (95% CI 55.5-58.4%) in 2020 (**Figure 1A**). Median time to 50% of the cohort achieving ≥ 1 ALT measurement was <140 days for 2016-19 and 301 days for 2020. Similarly in 2016, 70.0% (95% CI 68.3-71.3%) of patients had VL measured at least once throughout the year, whilst this significantly decreased to 50.0% (95% CI 48.9-51.8%) in 2020 (**Figure 1B**). Median time to 50% of patients having achieved ≥ 1 VL measurement was between 158 and 167 days for 2016-19 and was 357 days for 2020. COVID incidence data are displayed in **Figure S2**.

(ii) Coverage of ALT and VL testing stratified by treatment status

A subset of patients had treatment data recorded (which remained consistent during the period observed, at 2852/3498 (81.6%) in 2016 and 3564/4374 (81.5%) in 2020). In treated patients, the proportion with ≥ 1 ALT measurement by the end of the year decreased from 95.2% (95% CI 85.6-98.4%) in 2016 to 74.0% (95% CI 69.7-77.6%) in 2020 (**Figure 1C**), and in untreated patients from 65.4% (95% CI 63.5-67.3%) to 53.0% (95% CI 51.1-54.8%) in 2020 (**Figure 1E**). Similarly for VL, the proportion of treated patients tested decreased from 81.0% (95% CI 68.3-88.6%) in 2016 to 69.2% (95% CI 64.8-73.1%) in 2020 among treated patients (**Figure 1D**), and from 56.7% (95% CI 54.7-58.7%) to 45.6% (95% CI 43.7-47.4%) in untreated patients (**Figure 1F**).

(iii) Frequency of ALT and VL testing (number of tests performed each month)

Pre-COVID, the mean number of ALT measurements a month varied from 14 (95% CI 14-14) to 26 (95% CI 26-26), typically with annual dips in August and December (likely to reflect holiday periods when clinic intensity is lower) (**Figure 2A**). From March 2020 through to June 2021, this range reduced to mean number of between 7 (95% CI 7-7) and 14 (95% CI 14-14) tests per 100 patients per month, with a loss of the seasonal patterns previously observed, and reaching a nadir of 7 per 100 patients (95% CI 6-7) in April 2020 during the first lockdown. The same trend was observed for VL (**Figure 2B**), with mean numbers of VL measurements ranging from 7 (95% CI 7-7) to 12 (95% CI 12-12) per 100 patients during pre-COVID years and from 2 (95% CI 2-2) to 7 (95% CI 7-7) during the COVID period, with a nadir of 2 measurements per 100 patients (95% CI 2-2) in April 2020.

(iv) Frequency of testing by HBV treatment status

VL and ALT measurements were more frequent in treated patients (**Fig 2 C,D**) compared to untreated patients (**Fig 2 E,F**) throughout the whole study period. In treated patients pre-COVID, the mean number of ALT measurements fluctuated between and within years but remained >25 measurements per 100 patients per month (**Figure 2C**). Mean number of monthly tests fluctuated between 19 (95% CI 18-21) and 35 (95% CI 34-37) measurements per 100 patients during the COVID period but were generally significantly lower compared to pre-COVID years. This pattern was also observed for VL, with mean numbers of measurements ranging from 11 (95% CI 11-12) to 23 (95% CI 23-24) during pre-COVID years and 6 (95% CI 6-7) to 13 (95% CI 12-13) during the COVID period (**Figure 2D**).

In untreated patients pre-COVID, mean number of ALT measurements per 100 patients per month ranged from 10 (95% CI 10-11) to 23 (95% CI 22-23), with a significant drop in the COVID period to between 5 (95% CI 5-5) and 15 (95% CI 14-15) (**Figure 2E**). This pattern was also observed for VL, with pre-COVID and COVID measurements ranging from 6 (95% CI 6-7) to 11 (95% CI 11-11) and from 2 (95% CI 2-2) to 7 (95% CI 7-7) measurements per 100 patients, respectively (**Figure 2F**).

Discussion/Conclusions:

These data from a large-scale UK clinical data source representing secondary and tertiary care centers demonstrate the negative impact of the COVID-19 pandemic on routine clinical surveillance for patients with CHB infection. Reduction in rates of surveillance closely track SARS-CoV-2 incidence (**Suppl Fig 2**) and thus periods of population lockdown.

During lockdown periods, much clinical care for viral hepatitis has been switched to telemedicine (15,16), which in most cases allows maintained contact between patients and their healthcare team, but at the detriment of laboratory monitoring. Although patients may have an option to attend a primary care or hospital phlebotomy appointment, all services have been stretched, and clinicians and/or patients may have elected to defer routine blood tests. For certain patient groups, telephone appointments are impractical, with a risk that contact may have been lost altogether during lockdown – for example in patients who do not communicate confidently in English. Furthermore, a proportion of CHB patients who left the UK early in the course of the pandemic may have been unable to return due to travel restrictions, presenting a further barrier to routine surveillance.

The impact of the pandemic was seen across both treated and untreated individuals. However, pre-pandemic ALT measurements were generally more frequent in treated patients, and there was a greater impact on ALT measurement in this group during lockdowns.

We were unable to investigate how imaging-based surveillance strategies were impacted due to the COVID-19 pandemic due to the lack of complete elastography and ultrasound data in our current dataset. However, we suggest that imaging may be even more affected than laboratory surveillance as it requires the patient to attend hospital. Further collection of imaging data via the NIHR HIC will enable future investigation of this question. Disruption of both laboratory and imaging surveillance may be associated with an increased risk of CHB progression and delays in starting therapy in situations where it is indicated.

Our data represent only five centres, which are large urban secondary care providers in the South East of England. Different effects may apply in different regions or in more rural settings. Efforts and resources will be required to refine telemedicine services to optimise access to ongoing laboratory surveillance (17), to re-establish face-to-face services and to catch-up on monitoring and interventions for those who have experienced delays. Longitudinal follow-up is warranted to ensure activity is re-aligned in order to support progress to elimination goals, and investigate the relationship between these disruptions and future outcomes, including cirrhosis and hepatocellular carcinoma.

Abbreviations:

ALT	Alanine transferase
CHB	Chronic HBV
COVID-19	Coronavirus Disease 2019
GHSS	Global Health Sector Strategy
HBV	Hepatitis B virus
HCC	Hepatocellular carcinoma
HIC	Health Informatics Collaborative
NHS	National Health Service
NIHR	National Institute for Health Research
SARS-CoV-2	Severe acute respiratory syndrome coronavirus 2
VL	Viral load
WHO	World Health Organization

Acknowledgments:

The authors would like to thank all the research nurses and research admin staff at the contributing sites for their help in data collection and submission. The authors would also like to thank clinicians, projects managers, informaticians, and data managers at the other participating sites working to submit data.

Ethics approval:

The research database for the NIHR HIC viral hepatitis theme was approved by South Central - Oxford C Research Ethics Committee (REF Number: 21/SC/0060). All methods in this study were carried out in accordance with relevant guidelines and regulations.

Figure legends:

Figure 1. Kaplan-Meier plots demonstrating the cumulative proportion of adults with chronic HBV infection undergoing routine laboratory surveillance. Plots show patients who have had ≥ 1 ALT (panels A, C, E) and ≥ 1 HBV DNA VL (panels B, D, F) measurement each year for pre-COVID (2016-19) and COVID (2020 and part of 2021) years. For both ALT and VL, plots are stratified by treated (panels C and D, respectively) and untreated (panels E and F, respectively) patients. Dashed lines depict median time for 50% of the cohort to have the laboratory assessment undertaken. Cumulative probabilities for each year were calculated using the Kaplan-Meier method, comparing probabilities across years using the log-rank test, with 2016 serving as the reference/baseline year.

Figure 2. Mean numbers of ALT and HBV DNA VL measurements per 100 patients per month during pre-COVID (2016-19) and COVID (2020 and part of 2021) periods. Data are shown overall and stratified by treatment status for both VL (panels A, C, E) and ALT (panels B, D, F). Dates of UK national COVID lockdowns are denoted in overall plots. 95% CIs were calculated using the normal distribution (whereby standard error (SE) is estimated by $\frac{s}{\sqrt{n}}$ with n denoting sample size and s denoting standard deviation).

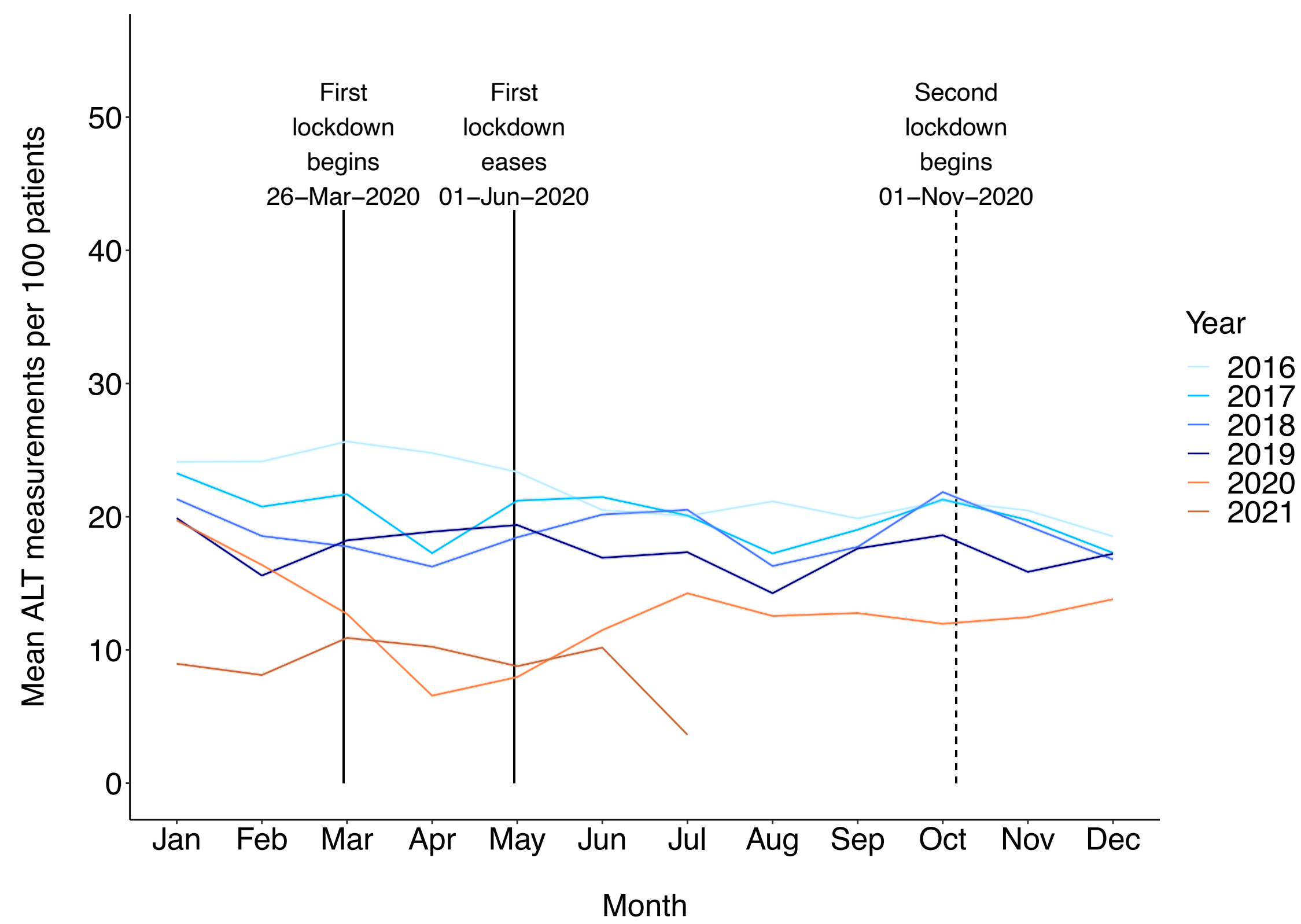
References:

1. WHO Coronavirus (COVID-19) Dashboard [Internet]. [cited 2021 Jun 14]. Available from: <https://covid19.who.int/>

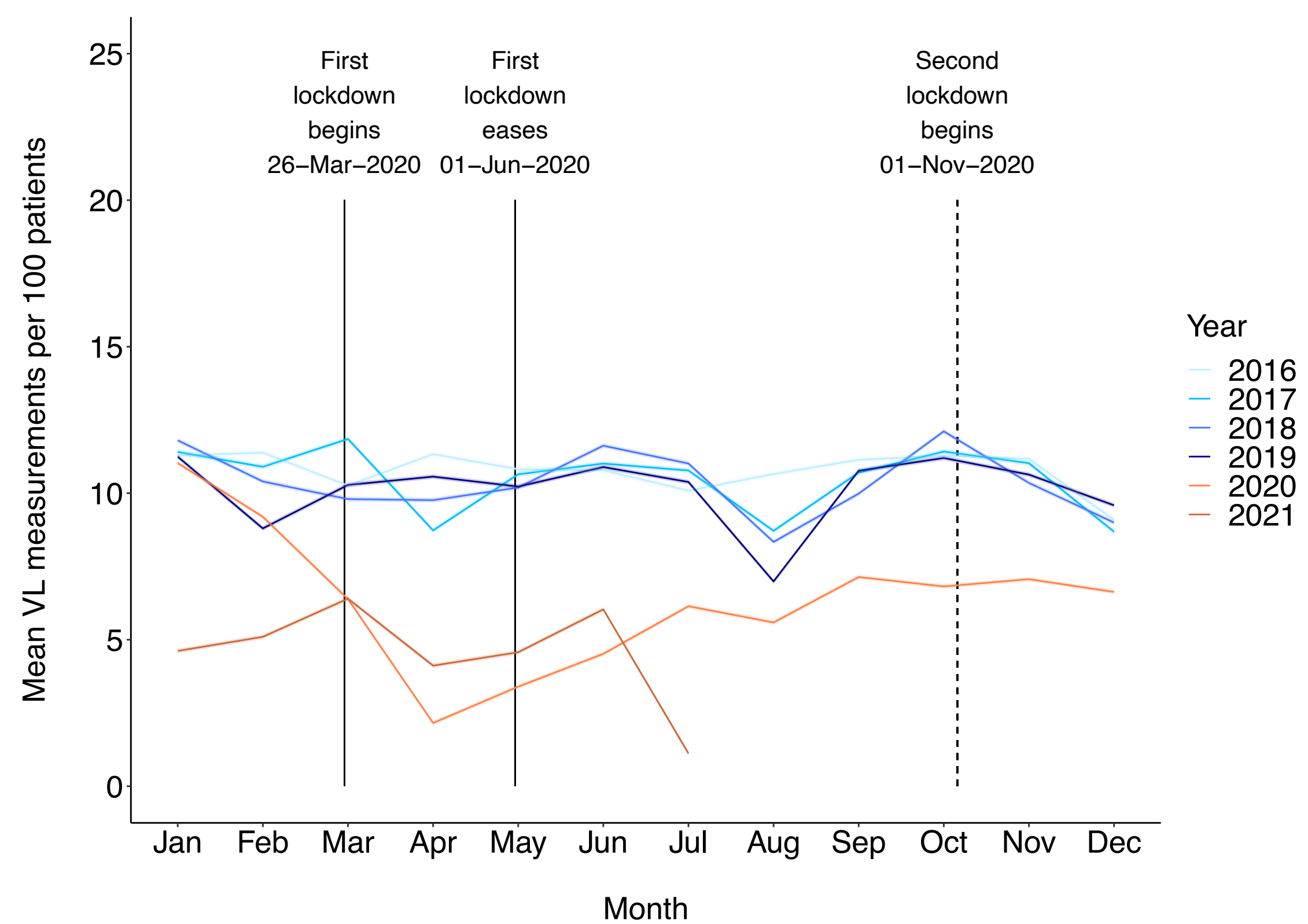
2. Global Health Sector Strategy on viral hepatitis 2016–2021. [Internet]. Geneva; 2016 [cited 2021 Jun 14]. Available from: <https://apps.who.int/iris/bitstream/handle/10665/246177/WHO-HIV-2016.06-eng.pdf?sequence=1&isAllowed=y>
3. Sarin SK, Kumar • M, Lau • G K, Abbas • Z, Chan • H L Y, Chen • C J, et al. Asian-Pacific clinical practice guidelines on the management of hepatitis B: a 2015 update. *Hepatol Int* [Internet]. 2017 [cited 2020 Jul 7];10:1–98. Available from: <https://www.ncbi.nlm.nih.gov/pmc/articles/PMC4722087/>
4. Terrault NA, Lok ASF, McMahon BJ, Chang KM, Hwang JP, Jonas MM, et al. Update on prevention, diagnosis, and treatment of chronic hepatitis B: AASLD 2018 hepatitis B guidance. *Hepatology* [Internet]. 2018 [cited 2020 Jun 8];67(4):1560–99. Available from: <https://aasldpubs.onlinelibrary.wiley.com/doi/10.1002/hep.29800>
5. EASL. European Association for the Study of the Liver (EASL) 2017 Clinical Practice Guidelines on the management of hepatitis B virus infection. *J Hepatol* [Internet]. 2017 [cited 2019 Oct 23];67(2):370–98. Available from: <http://www.ncbi.nlm.nih.gov/pubmed/28427875%0Ahttp://linkinghub.elsevier.com/retrieve/pii/S016882781730185X>
6. European Association for the Study of the Liver. EASL Clinical Practice Guidelines on non-invasive tests for evaluation of liver disease severity and prognosis – 2021 update. *J Hepatol*. 2021;1–31.
7. National Institute for Health and Care Excellence. Cirrhosis in over 16s: assessment and management. 2016;(July 2016). Available from: <https://www.nice.org.uk/guidance/ng50/resources/cirrhosis-in-over-16s-assessment-and-management-1837506577093>
8. European Association for the Study of the Liver. The summarized of EASL 2017 Clinical Practice Guidelines on the management of hepatitis B virus infection. *J Hepatol*. 2017;67:370–98.
9. National Institute for Health and Care Excellence. Hepatitis B (chronic): diagnosis and management. 2017;2016(June):1–36. Available from: <https://www.nice.org.uk/guidance/cg165>
10. Pley CM, McNaughton AL, Matthews PC, Lourenço J. The global impact of the COVID-19 pandemic on the prevention, diagnosis and treatment of

- hepatitis B virus (HBV) infection. *BMJ Glob Heal* [Internet]. 2021 Jan 1 [cited 2021 Jun 15];6(1):4275. Available from: <http://gh.bmj.com/>
11. Wingrove C, Ferrier L, James C, Wang S. The impact of COVID-19 on hepatitis elimination [Internet]. Vol. 5, *The Lancet Gastroenterology and Hepatology*. Elsevier Ltd; 2020 [cited 2021 Jun 14]. p. 792–4. Available from: <https://doi.org/10.1016/S2468->
 12. Smith DA, Wang T, Freeman O, Crichton C, Salih H, Matthews PC, et al. National Institute for Health Research Health Informatics Collaborative: Development of a pipeline to collate electronic clinical data for viral hepatitis research. *BMJ Heal Care Informatics* [Internet]. 2020 Nov 19 [cited 2021 Jun 14];27(3):100145. Available from: <http://informatics.bmj.com/>
 13. Wang T, Smith DA, Campbell C, Freeman O, Moysova Z, Noble T, et al. Cohort Profile: National Institute for Health Research Health Informatics Collaborative: Hepatitis B Virus (NIHR HIC HBV) Research Dataset. *medRxiv* [Internet]. 2021 Oct 25 [cited 2021 Oct 26];2021.10.21.21265205. Available from: <https://www.medrxiv.org/content/10.1101/2021.10.21.21265205v1>
 14. Coronavirus (COVID-19) in the UK [Internet]. *gov.uk*. 2021 [cited 2021 Jul 22]. Available from: <https://coronavirus.data.gov.uk/details/cases>
 15. Clinical guide for the management of remote consultations and remote working in secondary care during the coronavirus pandemic. *NHS Engl*. 2020;
 16. Hutchings R. The impact of Covid-19 on the use of digital technology in the NHS. *Nuff Trust*. 2020;
 17. Sowah L, Chiou C. Impact of Coronavirus Disease 2019 Pandemic on Viral Hepatitis Elimination: What Is the Price? <https://home.liebertpub.com/aid> [Internet]. 2021 Jul 22 [cited 2021 Sep 21];37(8):585–8. Available from: <https://www.liebertpub.com/doi/abs/10.1089/aid.2020.0301>

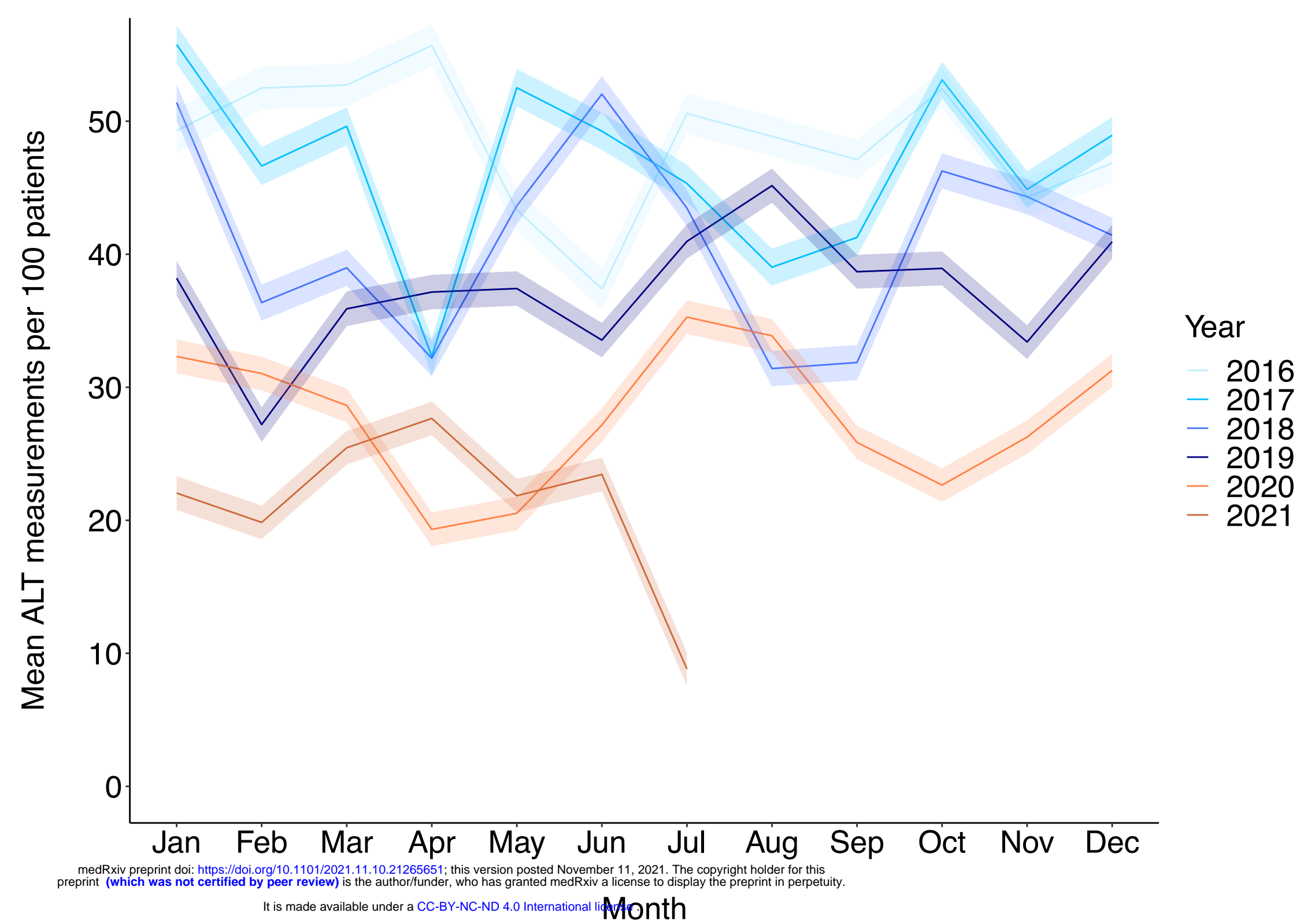
A. ALT, all patients



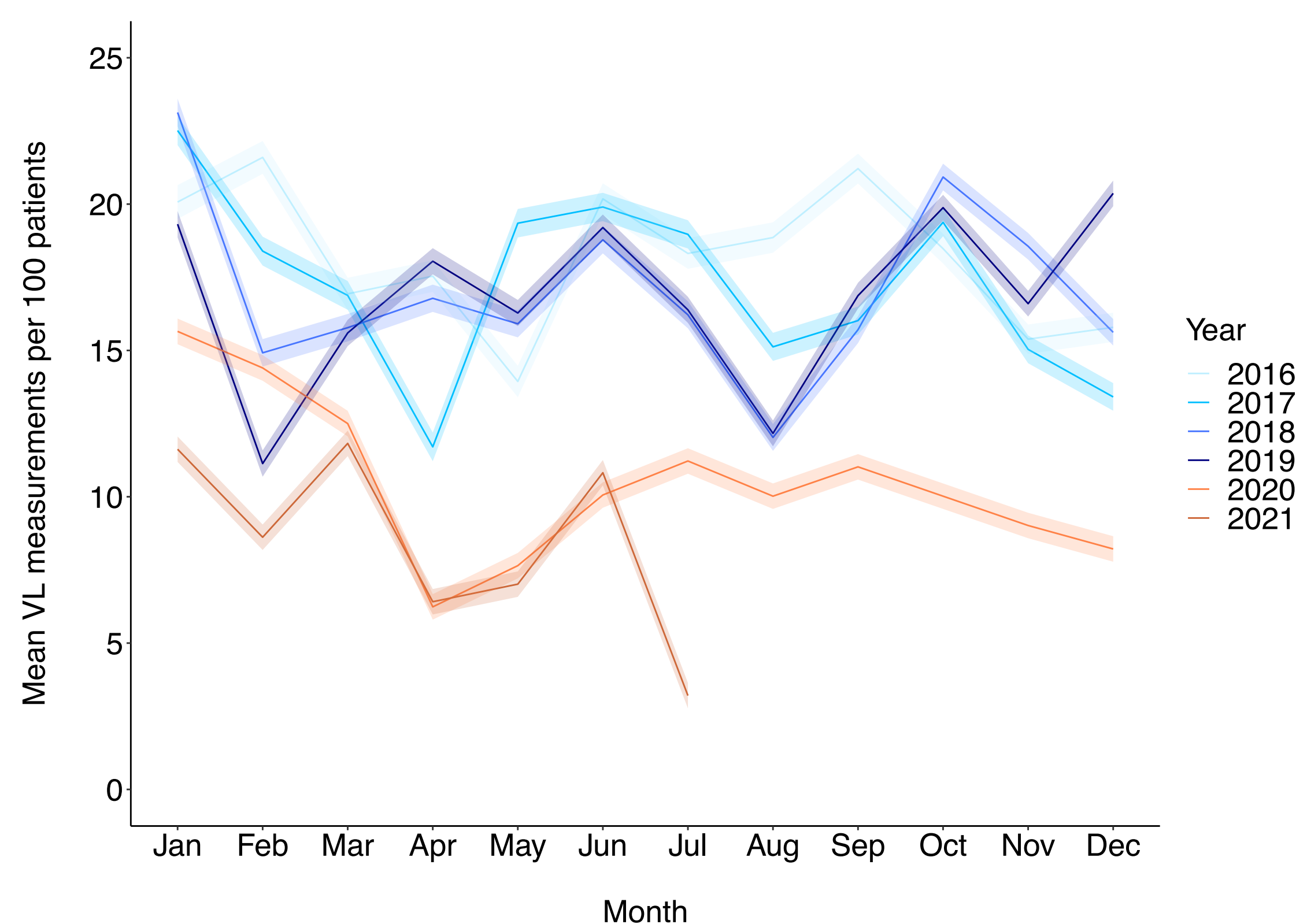
B. VL, all patients



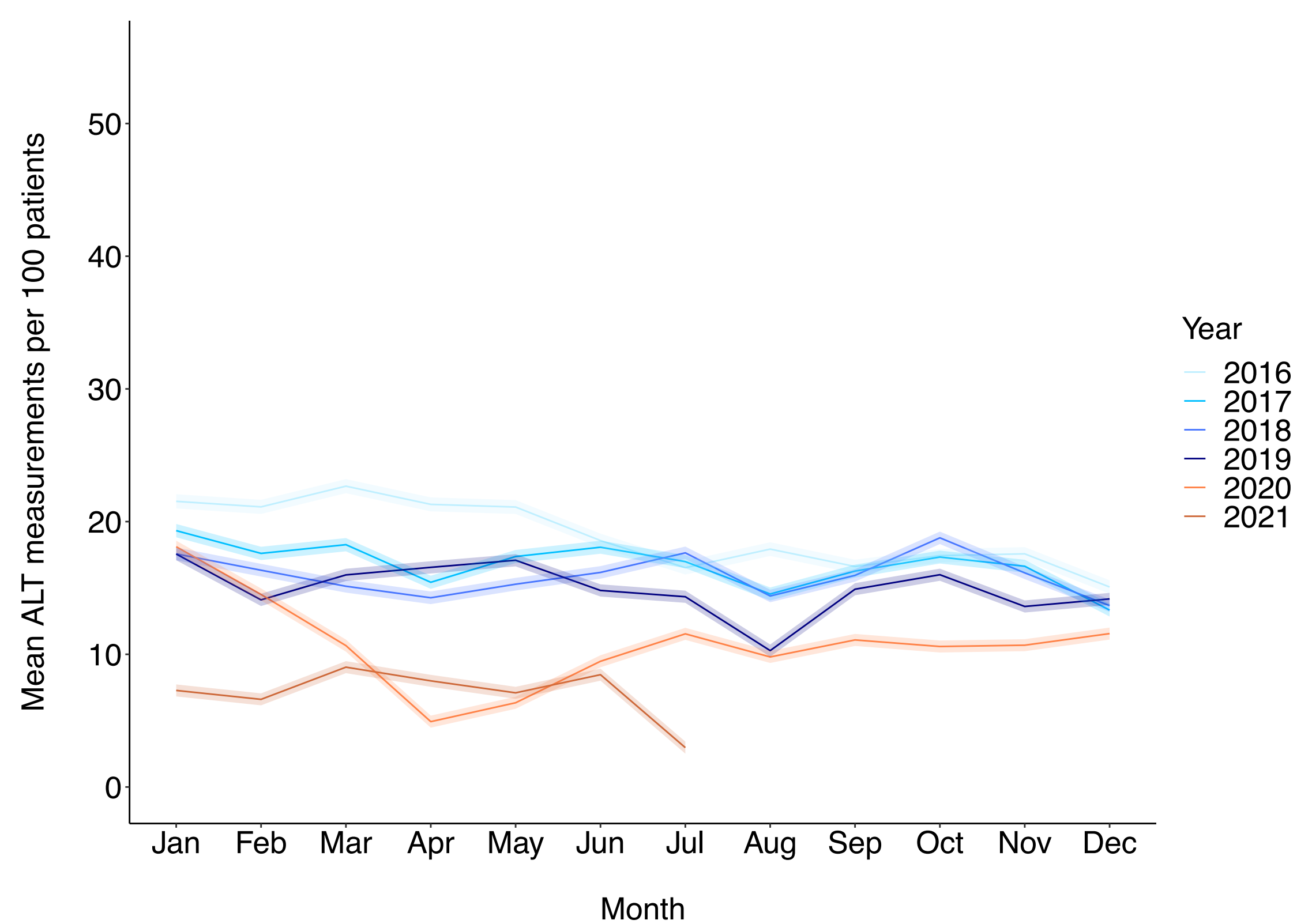
C. ALT, treated patients



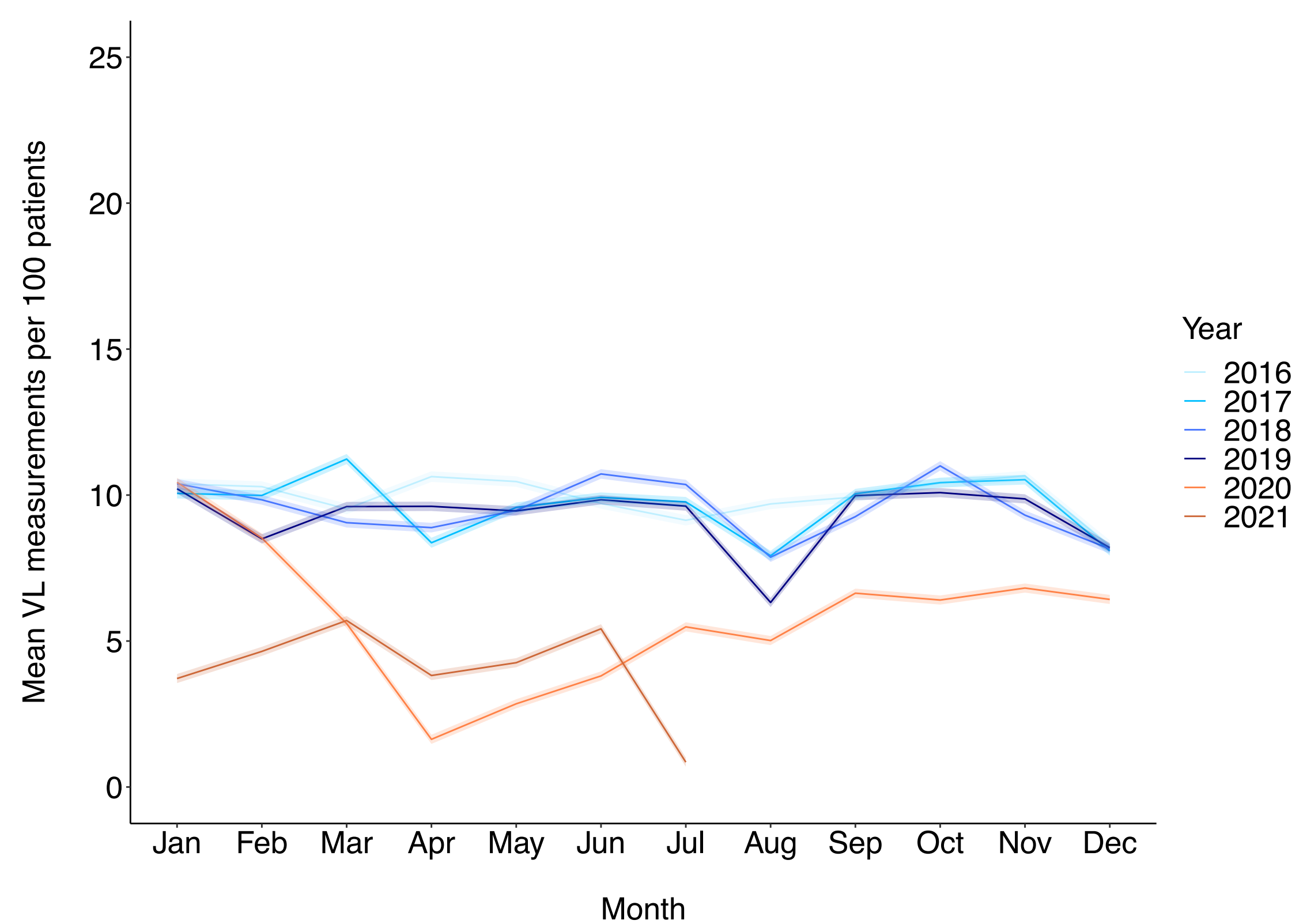
D. VL, treated patients



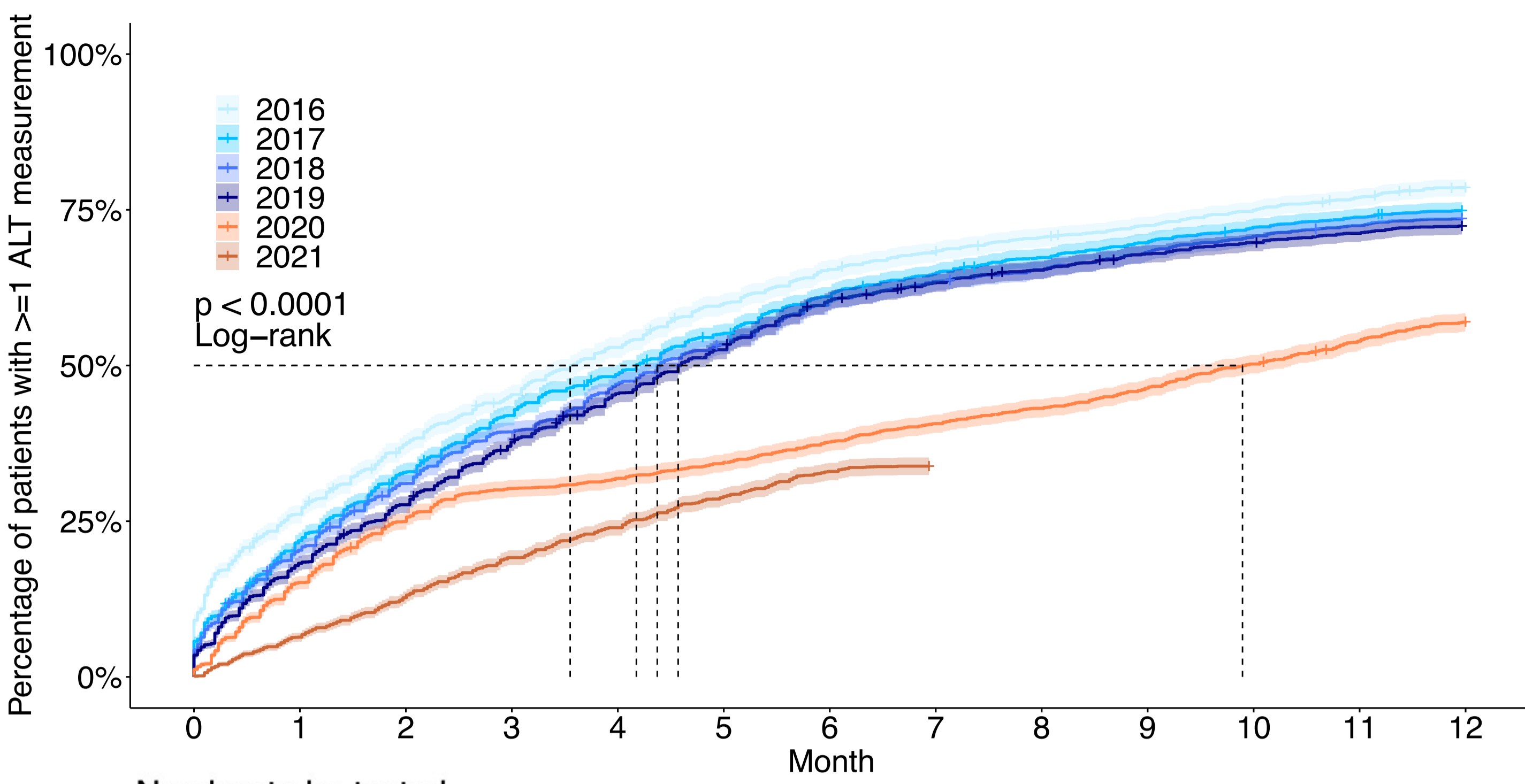
E. ALT, untreated patients



F. VL, untreated patients



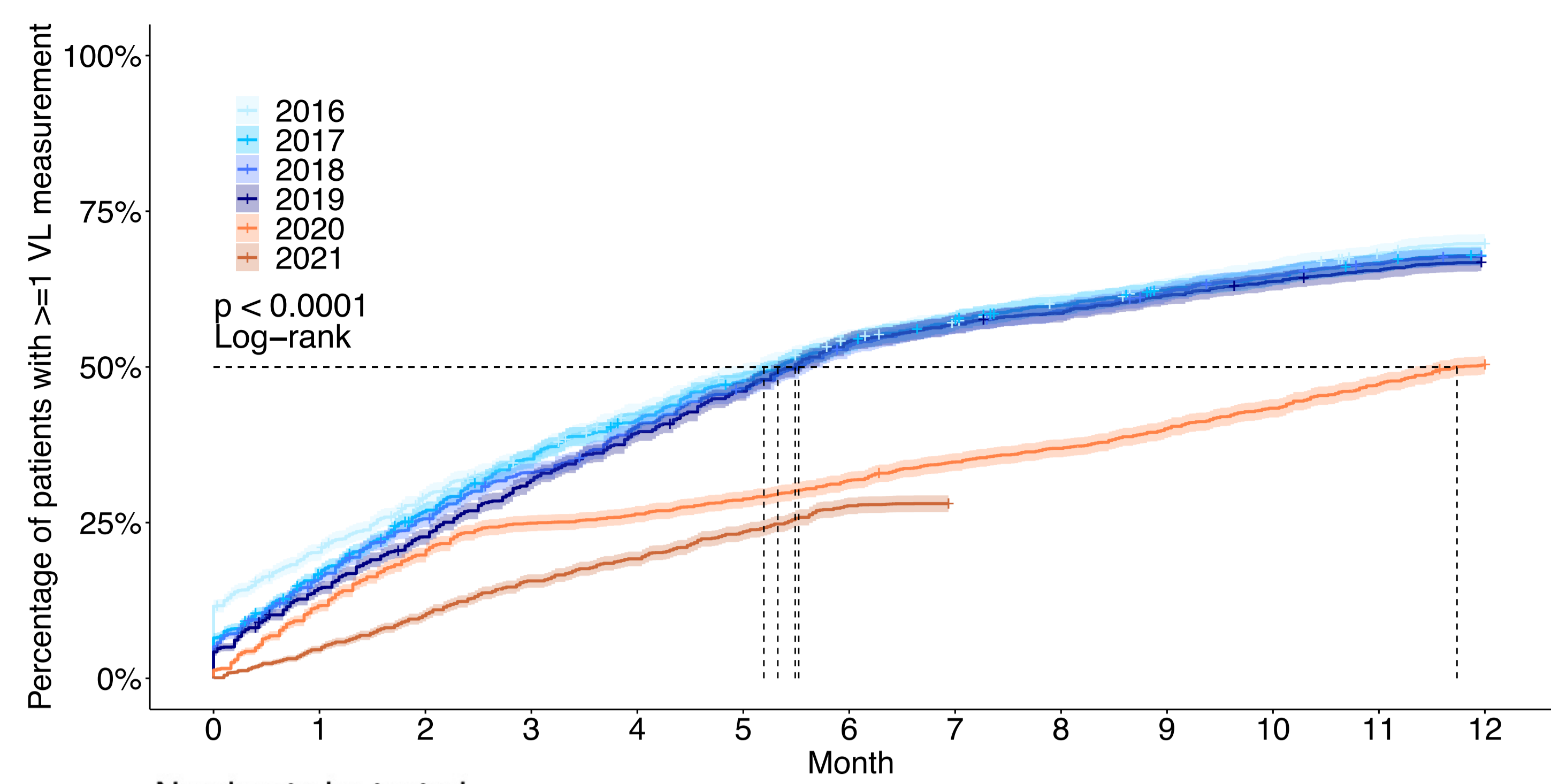
A. ALT, all patients



Number to be tested

2016	3498	2583	2188	1906	1641	1392	1203	1110	1021	954	868	795	0
2017	3822	2983	2564	2214	1961	1706	1482	1343	1240	1150	1054	993	0
2018	4090	3256	2816	2477	2165	1903	1621	1492	1410	1298	1192	1122	0
2019	4308	3522	3116	2680	2343	2040	1699	1571	1482	1368	1290	1226	0
2020	4374	3711	3282	3050	2979	2866	2724	2595	2487	2346	2176	2013	0
2021	4374	4095	3818	3536	3326	3106	2931	0	0	0	0	0	0

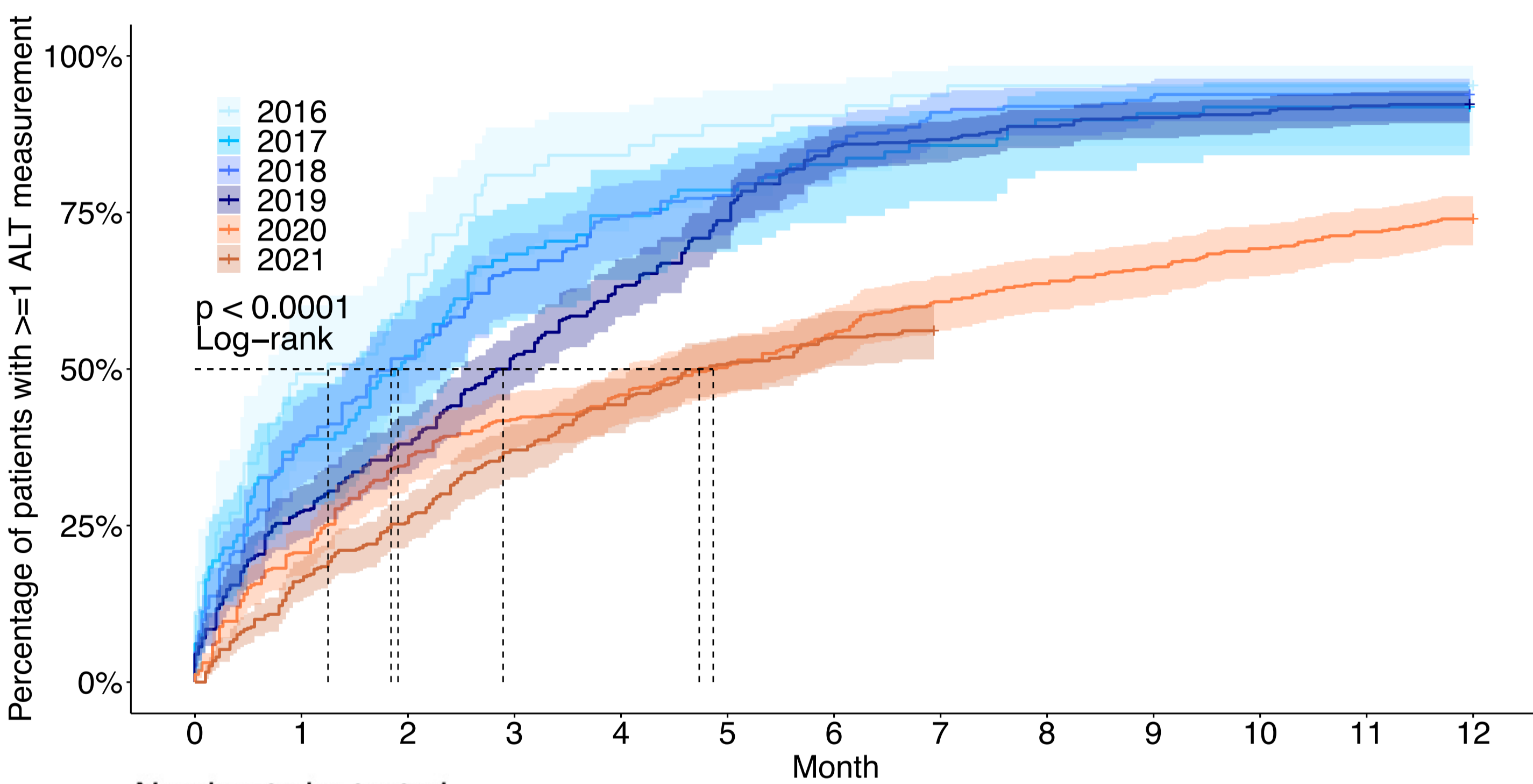
B. VL, all patients



Number to be tested

2016	3498	2786	2477	2238	1997	1772	1580	1483	1374	1284	1183	1090	0
2017	3822	3176	2791	2467	2231	1982	1762	1621	1517	1423	1334	1254	0
2018	4090	3431	3038	2732	2434	2181	1901	1759	1669	1549	1436	1359	0
2019	4308	3684	3326	2935	2609	2319	1976	1858	1779	1658	1558	1483	0
2020	4374	3864	3508	3284	3220	3114	2984	2854	2758	2621	2476	2309	0
2021	4374	4173	3935	3690	3535	3344	3162	0	0	0	0	0	0

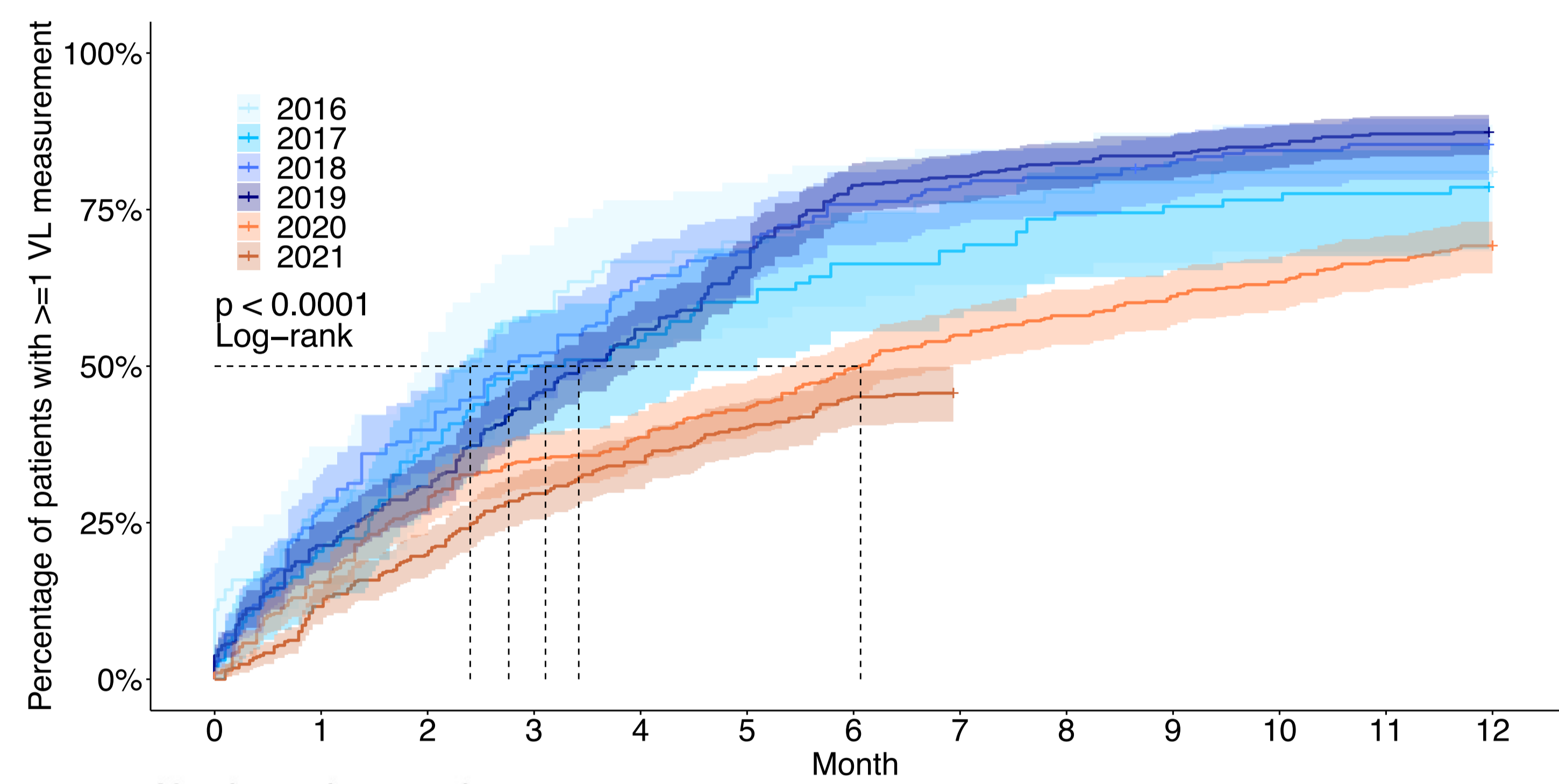
C. ALT, treated patients



Number to be tested

2016	63	32	25	12	10	7	6	4	3	3	3	3	0
2017	98	61	47	31	25	21	17	14	10	9	8	8	0
2018	211	130	102	72	54	47	29	19	17	14	13	13	0
2019	426	310	264	204	157	112	62	57	48	42	39	34	0
2020	484	384	316	281	262	239	215	190	176	163	149	136	0
2021	499	418	372	314	278	245	224	0	0	0	0	0	0

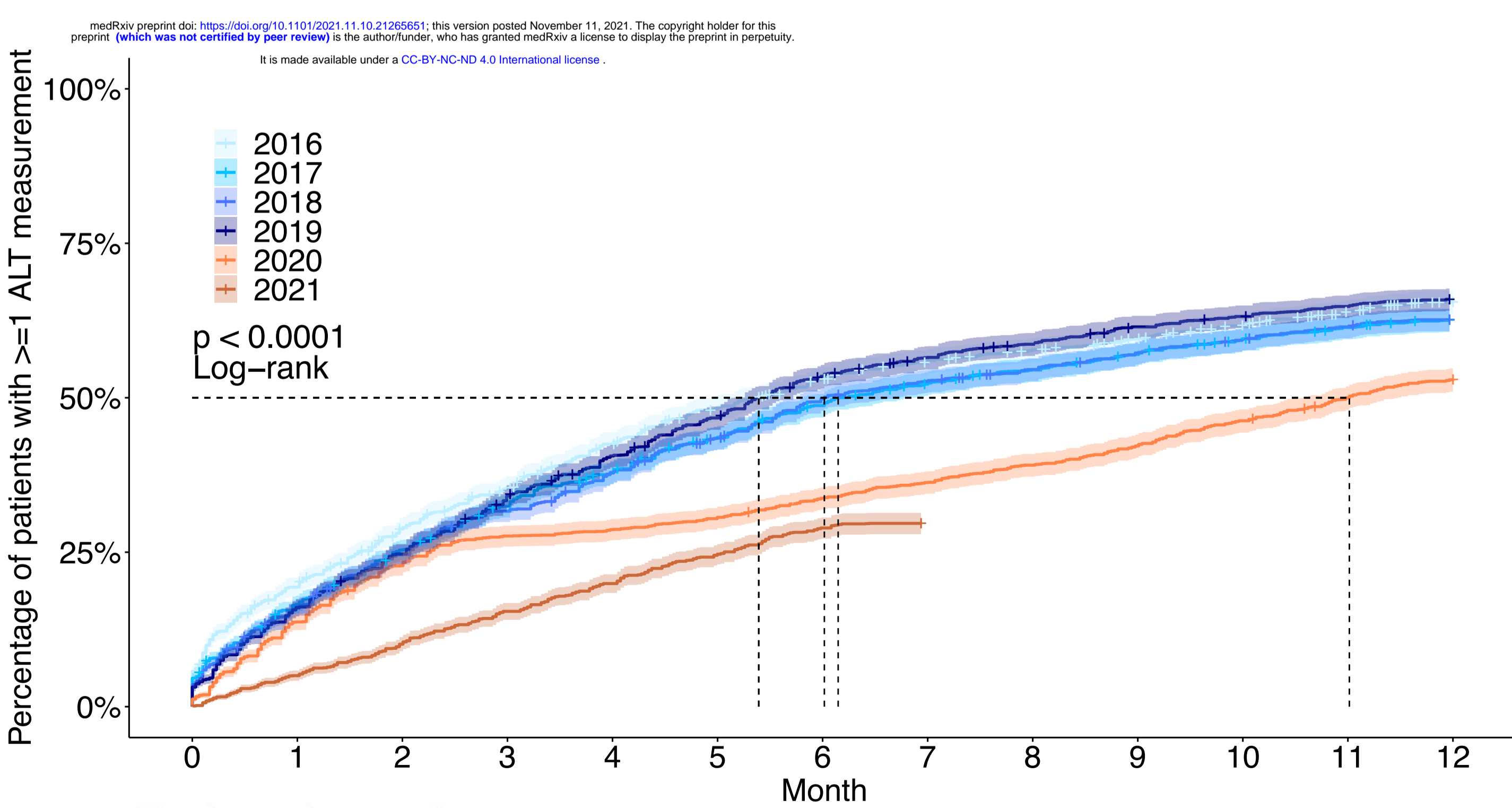
D. VL, treated patients



Number to be tested

2016	63	46	37	26	21	19	17	15	14	13	12	12	0
2017	98	78	62	49	45	39	33	31	25	24	23	22	0
2018	211	154	127	102	76	67	51	45	42	36	32	30	0
2019	426	335	295	233	188	146	90	84	75	70	62	55	0
2020	484	409	353	314	297	274	244	218	203	188	177	160	0
2021	499	441	400	351	326	298	274	0	0	0	0	0	0

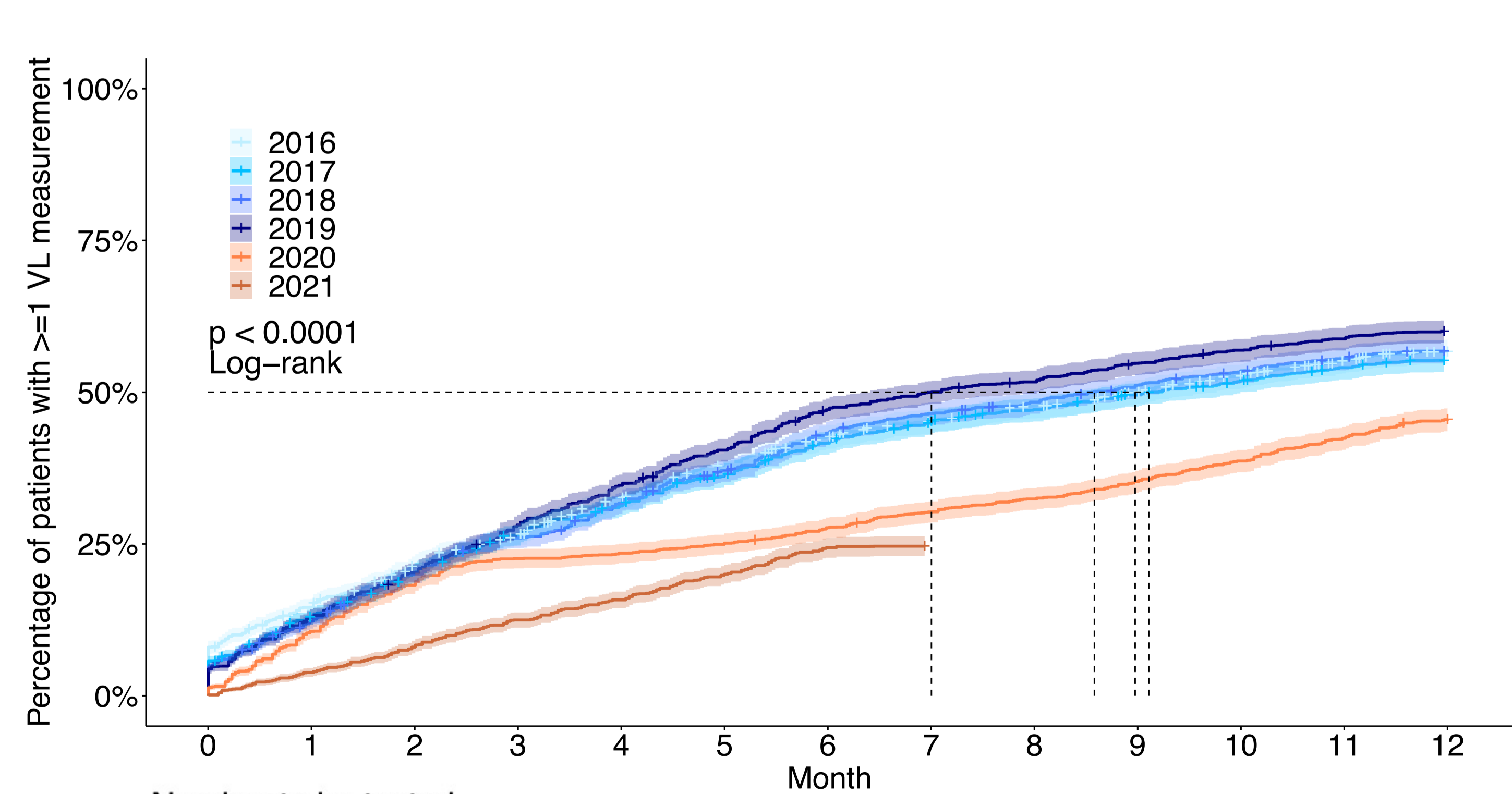
E. ALT, untreated patients



Number to be tested

2016	2483	1999	1754	1583	1400	1247	1130	1059	1004	950	889	821	0
2017	2686	2237	1999	1804	1654	1497	1356	1260	1196	1128	1057	1004	0
2018	2765	2319	2077	1882	1710	1550	1374	1295	1238	1164	1101	1047	0
2019	2715	2279	2043	1787	1607	1438	1253	1166	1105	1027	981	937	0
2020	2705	2334	2087	1957	1929	1875	1791	1722	1646	1562	1452	1349	0
2021	2690	2555	2418	2275	2154	2026	1912	0	0	0	0	0	0

F. VL, untreated patients



Number to be tested

2016	2483	2116	1937	1800	1639	1495	1382	1315	1245	1177	1107	1029	0
2017	2686	2331	2135	1960	1829	1684	1546	1453	1389	1320	1253	1194	0
2018	2765	2419	2202	2037	1877	1725	1553	1464	1408	1331	1265	1208	0
2019	2715	2362	2163	1949	1772	1612	1430	1353	1304	1220	1160	1109	0
2020	2705	2418	2212	2094	2070	2025	1955	1884	1826	1749	1657	1556	0
2021	2690	2587	2474	2354	2265	2151	2034	0	0	0	0	0	0