

Plasma Soluble Tumor Necrosis Factor Receptor Concentrations and Clinical Events after Hospitalization: Findings from ASSESS-AKI and ARID studies

Authors: Steven G. Coca^{1*}, George Vasquez-Rios^{1*}, Sherry G. Mansour², Dennis G. Moledina², Heather Thiessen-Philbrook³, Mark M. Wurfel^{4,5}, Jonathan Himmelfarb⁵, Eddie Siew⁶, Amit X. Garg⁷, Chi-yuan Hsu⁸, Kathleen D. Liu⁸, Paul L. Kimmel⁹, Vernon M. Chinchilli¹⁰, James S. Kaufman¹¹, Michelle Wilson¹², Rosamonde E Banks¹², Rebecca Packington¹³, Eibhlin McCole¹⁴, Mary Jo Kurth¹⁵, Ciaran Richardson¹⁴, Alan S. Go^{8,16} Nicholas M Selby^{13,17} & Chirag R. Parikh³

1. Division of Nephrology, Department of Medicine, Icahn School of Medicine at Mount Sinai, New York, New York
2. Section of Nephrology, Yale University School of Medicine, New Haven, Connecticut
3. Division of Nephrology, Department of Medicine, Johns Hopkins University, Baltimore, Maryland
4. Division of Pulmonary, Critical Care and Sleep Medicine, Department of Medicine, University of Washington, Seattle, Washington
5. Kidney Research Institute, Division of Nephrology, Department of Medicine, University of Washington, Seattle, Washington
6. Division of Nephrology and Hypertension, Department of Medicine, Vanderbilt University Medical Center, Nashville, Tennessee
7. Division of Nephrology, Department of Medicine, Schulich School of Medicine and Dentistry, Western University, London, Ontario, Canada
8. Division of Nephrology, Department of Medicine, University of California, San Francisco, San Francisco, California
9. Division of Kidney, Urologic, and Hematologic Diseases, National Institute of Diabetes and Digestive and Kidney Diseases, National Institutes of Health, Bethesda, Maryland

10. Department of Public Health Sciences, Penn State College of Medicine, Hershey,
Pennsylvania
11. Division of Nephrology, Veterans Affairs New York Harbor Healthcare System and New York
University School of Medicine, New York, New York
12. Clinical and Biomedical Proteomics Group, Leeds Institute of Medical Research, University
of Leeds, UK
13. Department of Renal Medicine, Royal Derby Hospital, Derby, UK
14. Randox Teoranta, Donegal, Ireland
15. Randox Laboratories Ltd, Crumlin, UK
16. Division of Research, Kaiser Permanente Northern California, Oakland, CA, USA
17. Centre for Kidney Research and Innovation, University of Nottingham, UK

*Co-primary first authors

Running Head: Soluble TNFRs and outcomes after hospitalization

Corresponding Authors:

Steven G. Coca, DO, MS
Nephrology Division
Icahn School of Medicine at Mount Sinai
One Gustave L. Levy Place, Box 1243
New York, NY 10029
Telephone number: (212) 849 - 2643
steven.coca@mssm.edu

or

Chirag R. Parikh, MD, PhD
Director, Division of Nephrology
Ronald Peterson Professor of Medicine
Johns Hopkins School of Medicine
1830 E. Monument St., Suite 416
Baltimore, MD 21287
Phone: (410) 955-5268
chirag.parikh@jhmi.edu

Word Count: 3478

Abstract: 248

Abstract

Background: The role of plasma soluble tumor necrosis factor receptor (sTNFR)1 and sTNFR2 in the prognosis of clinical events after hospitalization with or without acute kidney injury (AKI) is unknown.

Methods: We measured sTNFR1 and sTNFR2 obtained 3 months post-discharge using samples from Assessment, Serial Evaluation, and Subsequent Sequelae of Acute Kidney Injury (ASSESS-AKI) and AKI Risk in Derby (ARID) that enrolled patients with and without AKI. The associations between biomarkers with longitudinal kidney disease incidence and progression, heart failure and death were evaluated. Analyses were adjusted for demographics and key covariates at the 3-month visit.

Results: Among 1474 participants with plasma biomarker measurements, 19% developed kidney disease progression, 14% had later heart failure, and 21% died over a median follow-up of 4.4 years. For the kidney outcome, the adjusted HRs per doubling in concentration were 2.9 (2.2-3.9) for sTNFR1 and 1.9 (1.5-2.5) for sTNFR2. AKI during the index hospitalization did not modify the association between biomarkers and kidney events. For heart failure, the adjusted HRs per doubling in concentration were 1.9 (1.4-2.5) for sTNFR1 and 1.5 (1.2-2.0) for sTNFR2. For mortality, the adjusted HRs were 3.3 (2.5-4.3) for sTNFR1 and 2.5 (2.0-3.1) for sTNFR2. The findings in ARID were qualitatively similar for the magnitude of association between biomarkers and outcomes.

Conclusion: Plasma sTNFR1 and sTNFR2 measured 3 months after discharge were independently associated with clinical events, regardless of AKI status during the index admission. sTNFR1 and sTNFR2 may assist with the risk stratification of patients during follow-up.

Significance Statement

Soluble tumor necrosis factor receptor 1 (sTNFR1) and sTNFR2 associate with kidney outcomes in patients with chronic kidney disease with and without diabetes mellitus. However, their role in the post-hospitalization stage is unknown. High sTNFR1 and sTNFR2 obtained 3 months after discharge associate with kidney events, heart failure hospitalizations, and death among patients who did and did not have acute kidney injury (AKI). Furthermore, sTNFRs provide discriminative value at the time of predicting kidney events. These findings were demonstrated in two large independent prospective cohorts. sTNFR1 and sTNFR2 may detect patients at risk of future adverse events even when patients do not meet the clinical criteria for AKI or exhibit biochemical abnormalities.

Introduction:

Prediction of kidney outcomes after an acute illness requiring hospitalization is a major challenge in clinical practice. Acute kidney injury (AKI) is prevalent in the hospital and has been recognized as a major contributor to the burden of chronic kidney disease (CKD) in several studies.¹⁻⁴ Yet, it is estimated that only 19% of those who survive a hospitalization involving AKI receive appropriate follow-up within 12 months after discharge.⁵⁻⁷ Furthermore, both AKI and CKD independently and concomitantly increase the risk for future cardiovascular complications and death, which intensifies with further kidney function decline over time.^{8,9} These observations support the pursuit to identify biomarkers and clinical strategies to identify patients at the greatest risk of kidney disease progression.

Recently, the Acute Disease Quality Initiative (ADQI) Consensus conference proposed the implementation of damage and functional biomarkers of AKI for prediction and staging of CKD during post-AKI care.¹⁰ There is growing literature on the prognostic role of soluble tumor necrosis factor receptors (sTNFRs), particularly in kidney-related outcomes.¹¹⁻¹⁶ Tumor necrosis factor alpha (TNF- α) signaling pathways play a major role in cellular stress and inflammatory responses through soluble TNFR1 (sTNFR1) and soluble TNFR2 (sTNFR2).¹⁰⁻¹¹ High sTNFR1 and sTNFR2 concentrations measured in the hospital have been associated with protracted kidney recovery in critically ill patients within 7-60 days.¹⁷ However, previous studies have shown that complications associated with AKI can extend beyond 60 days, in parallel to the debilitating effects of an acute hospital admission.²⁻⁴ Moreover, depending on the etiology, up to 40% of the patients with AKI during hospitalization do not recover kidney function to their previous baseline level.^{18,19} Although the transition to CKD or end-stage kidney disease (ESKD) is typically determined by the 90-day mark, renal recovery has been documented beyond this time frame.²⁰⁻²⁴ Therefore, a number of patients could be left under-monitored and eventually

suffer from the burden of CKD and ESKD without the appropriate tools for assessing the varying risk of future clinical events.^{23,25}

The Assessment, Serial Evaluation, and Subsequent Sequelae of Acute Kidney Injury (ASSESS-AKI) study collected blood and urine samples at each annual visit to examine the added value of novel biomarkers in the risk-stratification of kidney and cardiovascular outcomes.²⁶ The AKI Risk in Derby (ARID) study was an independent prospective UK study that also aimed to study long-term outcomes after AKI in a protocolized fashion.²⁷ While the value of measuring plasma sTNFR1 and sTNFR2 to identify patients at risk of kidney function decline and death has been investigated in CKD and diabetes mellitus, their role in the post-hospitalization setting and AKI has not been rigorously evaluated.^{14,15} We sought to further explore the association between plasma sTNFR1 and sTNFR2 concentrations post-discharge with long-term kidney-related outcomes, heart failure hospitalizations, and mortality in ASSESS-AKI and ARID among patients who did and did not have AKI. Furthermore, we aimed to assess whether measuring sTNFR1 and sTNFR2 could add to the performance of clinical models.

METHODS

Cohort Descriptions

The primary analyses were conducted in the ASSESS-AKI study; a multicenter, prospective, parallel, matched cohort study. A detailed description of the study design and methods has been published elsewhere.²⁶ Briefly, ASSESS-AKI included 1538 hospitalized adult participants that developed AKI and matched individuals who did not have AKI and who survived to complete an in-person visit at 3 months after discharge. Patients in the medical and surgical floors, as well as in the intensive care units who met the study criteria were enrolled. Participants were age ≥ 18 years and had pre-admission serum creatinine levels that were obtained within 1 year of the index hospitalization in the outpatient setting or non-emergency department visit. Detailed inclusion criteria have been described in the study protocol.²⁶ Exclusion criteria included the presence of acute glomerulonephritis, hepatorenal syndrome, multiple myeloma, malignancy, urinary obstruction, severe heart failure, kidney replacement therapy (dialysis, transplant) prior to hospitalization, pregnancy, or predicted survival ≤ 12 months.

AKI during the index hospitalization was defined as a relative increase of $\geq 50\%$ or absolute increase of ≥ 0.3 mg/dL in peak inpatient serum creatinine concentration above the baseline creatinine. AKI stage was classified following the Acute Kidney Injury Network (AKIN) guidelines. In parallel, a matched sample of 769 hospitalized adults without AKI were enrolled at each participating site. Absence of AKI was defined as having both $< 20\%$ relative increase and ≤ 0.2 mg/dL absolute increase in peak inpatient serum creatinine concentration compared to baseline. Patients were matched in each individual research center by pre-admission CKD status/eGFR (estimated glomerular filtration rate) by using the Chronic Kidney Disease

Epidemiology Collaboration (CKD-EPI) equation, demographics, and comorbidities.²⁸ Participants enrolled in this study had study visits at 3 and 12 months after discharge, and annually thereafter, with interim phone contacts at 6 month intervals.

The AKI Risk in Derby (ARID) study was an independent prospective cohort investigating the association between AKI among hospitalized patients with long-term outcomes; similar in design to ASSESS-AKI. ARID recruited two subgroups of patients who had been hospitalized at the Royal Derby Hospital (UK) and who survived at least 90 days after hospitalization. Individuals with and without AKI were identified through automated screening of serum creatinine results.²⁹ The presence of AKI was identified by Kidney Disease Improving Global Outcomes (KDIGO) criteria. Urine output was not used due to its inaccurate recording in a general hospitalized population. The etiology of AKI was determined by chart review. Biochemistry results of participants in the non-exposed group were reviewed to ensure that they had not sustained AKI during hospitalization. Participants were followed in a protocolized fashion at 3 months, 12 months and 3 years.³⁰ ARID clinical endpoints at 3 years were used to compare biomarkers and the risk of CKD incidence/progression, heart failure, and mortality among subgroups at each time point.^{27,30} Outcome data were available for participants with a median (IQR) follow-up period of 4.4 (2.5, 5.7) years in ASSESS-AKI by the time of analysis, while in ARID, all the participants included in the analysis had outcome data collected after a 3-year follow-up. ARID used the last serum creatinine available in records if a patient expired before the 3-year mark.

Covariates

Demographic characteristics were recorded for each participant. To align covariates, we collapsed race into 2 categories: 'white' and 'non-white' and included baseline CKD status (yes/no). All clinical variables were obtained from medical records. Biomarker quartiles were defined within each cohort through different diagnostic assays. At baseline visit, occurring within 90 days after discharge, serum creatinine was measured using an isotope dilution mass spectrometry-traceable enzymatic assay (Roche Diagnostics, Indianapolis, IN), and a random spot urine protein-to-creatinine ratio using a turbidimetric method (Roche) in ASSESS-AKI. Serum creatinine and urinary albumin were measured in ARID via an enzymatic assay and an immunoturbidimetric assay (Tina-quant Albumin Generation 2), both on the Roche Cobas 702 module (Roche Diagnostics Limited, Burgess Hill, West Sussex, UK), respectively. Urinary creatinine was measured by the Jaffe method.

Biomarker Measurements

In ASSESS-AKI, plasma samples collected at the 3-month post-hospitalization visit underwent a single controlled thaw, were centrifuged at 5000xg for 10 minutes at 4°C, separated into 1 mL aliquots, and immediately stored at -80°C until biomarkers were measured. Plasma sTNFR1 and sTNFR2 were measured in a single batch using the Meso Scale Discovery platform (Meso Scale Diagnostics, Gaithersburg, MD), which uses electrochemiluminescence detection combined with patterned arrays. The intra-assay coefficient of variation (CV) for sTNFR1 was 5.3% with a detection range of 12.70-120,000 pg/mL. The intra-assay CV for sTNFR2 was 9.3%, with a detection range of 3.2-120,000 pg/mL. All laboratory personnel were blinded to the disease status and outcomes of interests.

In ARID, plasma sTNFR1 and sTNFR2 were measured using Randox's multiplexed Biochip Arrays with an Evidence Investigator™ analyzer according to manufacturer's instructions (Randox Laboratories Ltd, Crumlin, UK). The biochips use chemiluminescence detection from multiplexed arrays. CKD Biochip Array I was used for measuring sTNFR1 and sTNFR2, alongside other biomarkers. The intra-assay coefficient of variation (CV) for sTNFR1 was 9.08% with a detection range of 0.04-10 ng/mL. The intra-assay CV for sTNFR2 was 5.96%, with a detection range of 0.07-20 ng/mL. No bridging experiments were conducted between platforms.

Outcome Definitions

The outcomes for the analyses included kidney disease progression, heart failure hospitalization, and death. Kidney disease incidence/progression was defined as a composite of i) incident CKD (no evidence of pre-existing CKD at the index hospitalization and >25% reduction in the eGFR from baseline; or reaching CKD 3 or worse during follow-up) or ii) progression of pre-existing CKD (characterized by eGFR <60 ml/min/1.73m² during hospitalization and >50% reduction in the baseline eGFR; or progression to CKD 5) or iii) development of ESKD on 3-month follow-up (hemodialysis or peritoneal dialysis requirement at least once/week for >12 weeks, receiving a kidney transplant and/or death while on dialysis). Heart failure hospitalization was identified by discharge codes and the Framingham Heart Study criteria in ASSESS-AKI.³¹ In ARID, HF hospitalization was defined by ICD10 discharge codes. Death was ascertained from proxy reports, medical records, and death certificate data. In the primary analysis, ASSESS-AKI evaluated time to clinical events within a median (IQR) follow-up of 4.4 (IQR 2.5, 5.7), whereas ARID determined the outcomes of kidney disease progression and death at annual intervals. We examined the binary outcomes of the composite of kidney disease progression and death after 3 years of follow-up for each participant in ASSESS-AKI and ARID during the secondary analysis (**Supplemental Figure 1**).

Statistical analysis

Descriptive statistics for continuous variables were reported as mean (standard deviation) or median [interquartile range (IQR)] when appropriate. Categorical variables were presented as frequencies. Clinical and demographic differences were evaluated through the Kruskal-Wallis test or Chi-square tests. The primary analysis consisted in the evaluation of clinical outcomes including kidney disease progression, heart failure hospitalizations, and mortality in ASSESS-AKI. We used Cox proportional hazard models that were adjusted for race, sex, age, body mass index (BMI), smoking status, history of chronic obstructive pulmonary disease (COPD), cardiovascular disease (CVD), AKI status (vs. no AKI), CKD status (vs. no CKD), sepsis, 3-month eGFR, 3-month urine albumin creatinine ratio (UACR), 3-month c-reactive protein (CRP), and diabetes mellitus status. Hazard ratios (HR) and 95% confidence intervals (CI) multivariable models are reported. In addition, we assessed the receiver operating characteristic (ROC) curves of sTNFR1 and sTNFR2 in ASSESS-AKI for the discrimination of kidney events alone and when added to a clinical model comprised of eGFR, UACR, and C-reactive protein at 3 months, AKI at the index hospitalization, race/ethnicity, age, smoking, and COPD.

In the secondary analysis, we examined the binary outcomes of kidney disease progression, heart failure hospitalizations and mortality through 3 years of follow-up among participants in both ASSESS-AKI and ARID. Logistic regression models were also adjusted for the key covariates described above. Two-tailed P values of less than 0.05 were considered to indicate statistical significance. The analyses were conducted using SAS software, version 9.4 (Cary, NC). This study was approved by the institutional review boards of the participating institutions.

RESULTS

Baseline characteristics of the participants in ASSESS-AKI

Of the 1538 participants in ASSESS-AKI, 1474 had plasma sTNFR1 and sTNFR2 measures (**Supplemental Figure 1**). Among 1474 patients included in the analysis, the mean age was 65 \pm 13 years, 63% were male and 82% were white. Patients were followed for a median of 4.4 (IQR 2.5, 5.7) years. Clinical characteristics and major comorbidities by quartiles of plasma sTNFR1 and sTNFR2 are shown in **Table 1** and **Supplementary Table 1**, respectively. At baseline, older age, AKI, and pre-hospitalization CKD were statistically associated with higher biomarker concentrations.

Association between plasma biomarkers and kidney events in ASSESS-AKI and biomarker prognostic performance

Plasma sTNFR1 and sTNFR2 were moderately correlated with eGFR and weakly correlated with CRP and UACR (**Supplementary Table 2**). Among 1474 participants, 19% experienced kidney disease progression, with 13% having incident CKD and 6% progression of pre-existing CKD within a median of 4.4 years (IQR 2.5, 5.7). Fifty participants (3%) reached ESKD after having incident CKD or progression of pre-existing CKD during study follow-up (**Figure 1**).

In adjusted models, plasma biomarkers measured 3 months after discharge were associated with kidney disease progression, independent of AKI status during the index hospitalization and key covariates (**Table 2** and **Figure 2**). The strength of association between kidney disease progression and plasma biomarkers increased linearly. Participants in the highest (4th) quartile vs. the lowest (1st) quartile of sTNFR1 had nearly 5-fold increased risk of the composite kidney

endpoint (adjusted HR: 4.7, 95% CI: 2.6-8.6). Likewise, participants in the 4th (highest) quartile vs. the 1st (lowest) quartile of sTNFR2 were at > 3-fold increased risk of the kidney endpoint (aHR 3.3, 95% CI: 1.9-5.7). Although the absolute incidence of kidney events was relatively higher in those that had AKI compared to those without it, there was no evidence that AKI interacted with the association between biomarkers and the kidney outcome (**Supplemental Table 3**). Furthermore, each doubling in the concentration of sTNFR1 and sTNFR2 was associated with a 11-18-fold higher incidence of ESRD (**Table 2 and Figure 2**). sTNFR1 and sTNFR2 alone at 3 months post-hospitalization had an AUROC of 0.89 (0.85-0.94) and 0.86 (0.81-0.91), respectively, for the composite kidney outcome. AUROC improved to 0.94 (0.93-0.97) and 0.94 (0.91-0.97) for sTNFR1 and sTNFR2, respectively when they were added to basic set of clinical predictors.

Association between sTNFR1 and sTNFR2 and heart failure in ASSESS-AKI

Among 1474 participants, 14% were hospitalized for heart failure during follow-up. Both sTNFR1 and sTNFR2 measured at 3 months of the index hospitalization were statistically and independently associated with heart failure hospitalization with aHR of 1.9 (95% CI: 1.4-2.5) and 1.5 (95% CI: 1.2, 2) per doubling in sTNFR1 and sTNFR2, respectively, (**Table 2 and Figure 2**) after adjusting for confounders.

Association between plasma biomarkers and death in ASSESS-AKI

Overall, 21% of ASSESS-AKI participants died during follow-up, with an incidence of 45.4 (95% CI: 40.6-50.8) per 1000 person-years. Both biomarkers measured 3 months after the index hospitalization were independently associated with all-cause mortality with aHR 3.28 (95% CI: 2.5-4.2) per doubling for sTNFR1 and an aHR 2.5 (95% CI: 1.9, 3.1) per doubling for sTNFR2

after adjustment for confounders. Also, increasing risk of death was seen within higher biomarker quartiles (**Table 2 and Figure 2**).

Plasma biomarkers in the prognosis of kidney disease progression, heart failure and death in the independent cohort: the ARID Study

ARID included 964 participants who were included in the secondary analysis (**Supplemental Figure 1**). This group was predominantly white (>90%) with mean age of 69 ± 11 years and a higher prevalence of CKD before hospitalization when compared to ASSESS-AKI (23.5% vs. 12.5%). Comparisons of baseline eGFR, clinical variables and biomarker cutoffs between both cohorts are described in **Supplemental Table 4** and **Supplemental Table 5**. Incident outcome rates in ARID and ASSESS-AKI are depicted in **Supplemental Figure 2**.

In ARID, 202 (21%) individuals developed the end point of kidney disease incidence or progression at 3 years compared to 175 (12%) participants in ASSESS-AKI. Participants had a 1.4-fold increased risk of the composite kidney endpoint per each doubling in the concentration of sTNFR1 (**Supplemental Figure 3**). There was no independent association between sTNFR2 and the kidney endpoint. In ARID, the strength of associations for sTNFR1 and sTNFR2 with heart failure and mortality were smaller in magnitude than those observed in ASSESS-AKI (**Supplemental Figure 3**).

Discussion

Plasma levels of sTNFR1 and sTNFR2 measured 3 months after an acute hospitalization were independently associated with future progression of kidney disease. The strength of the association of sTNFR1 and sTNFR2 for all 3 outcomes were stronger in the US-based cohort (ASSESS-AKI) compared with the UK-based cohort (ARID). A rather novel finding was that these biomarkers were independently associated with heart failure in both cohorts, which highlights the potential importance of TNF- α signaling pathways in chronic heart and kidney disease. These biomarkers were also associated with death in ASSESS-AKI, which replicated for sTNFR2 in ARID. While the incidence of events was higher in those that had AKI during the index hospitalization, there was no evidence of effect modification by AKI on the association between sTNFRs and outcomes.

Prior studies have demonstrated both the severity and duration of AKI as well as the degree of post-AKI proteinuria strongly associate with future kidney events.^{1,32,33,34} We demonstrated that sTNFR1 and sTNFR2 measured 3 months after hospitalization independently associate with key long-term clinical kidney outcomes independently of kidney function (eGFR) and injury (UACR) parameters, as demonstrated in ASSESS-AKI. Furthermore, the association of sTNFRs with incident and progressive CKD has been demonstrated in diabetic kidney disease and CKD patients elsewhere.^{13-15,17} There was a marked gradation in risk for those in the 4th vs 1st quartiles of sTNFR1 and sTNFR2 for the development of kidney disease progression and ESKD. Our study adds to the evidence for the predictive role of sTNFRs after hospitalization and post-AKI outcomes, including recent data showing the utility of a multivariable model containing sTNFR1, sTNFR2, cystatin C and eGFR to discriminate those who have a significant worsening in kidney function in the three years following AKI.¹⁶ Also, sTNFRs were also strongly associated with outcomes in patients that did not experience AKI during the index

hospitalization in ASSESS-AKI, raising the question of undetected 'subclinical' AKI or CKD that was not captured by creatinine criteria. This is important since subclinical, and milder forms of AKI may not be recognized by general practitioners.¹⁰ These relationships were qualitatively reproduced in ARID, comprised of 995 participants admitted to the general wards, with a higher frequency of baseline CKD compared to ASSESS-AKI (23.5% vs. 12.5%). Overall, the results for sTNFR1 and kidney outcomes seen in ARID were concordant to those obtained in ASSESS-AKI. While this independent verification is important to externally validate our results, different biomarker analytical platforms, sample size, follow-up period, and baseline CKD frequency could explain in part the heterogenous findings between cohorts.

We found that higher biomarker concentrations after discharge were associated with subsequent heart failure hospitalizations and mortality during the following 4.5 years, independent of other key confounders. The associations were stronger in ASSESS-AKI than in ARID. Serum TNFRs have been associated with adverse cardiovascular outcomes including myocardial infarction and heart failure in patients with coronary heart disease via complex cellular and molecular changes.^{35,36,37} Higher levels of these biomarkers have been associated with increased infarct size, left ventricular dysfunction and accelerated atherosclerosis. Therefore, these pathological changes can induce myocardial remodeling and contribute to development of heart failure.^{37,38} While higher sTNFR levels in CKD patients have been associated with the development of CVD,³⁹ the relationship between these biomarkers and heart failure admissions after AKI is less known.

Overall, these findings may have direct application in post-hospitalization follow-up, especially when most AKI patients are seen by primary care physicians rather than nephrologists.^{2,6} Many

patients, even those without 'clinical' kidney disease may have unappreciated renal parenchymal disease predisposing them to new episodes of AKI or have residual functional damage.¹⁰ Given the high discrimination for future kidney events (AUC 0.94) with either sTNFR1 or sTNFR2 and a small set of clinical variables, future studies could evaluate whether using sTNFR-enhanced risk assessment models could aid in triaging patients for nephrology consultation or for improved clinical care overall in those at highest risk for adverse kidney events. In this regard, measuring sTNFRs may be particularly helpful in for risk assessment in patients recovering from an acute illness who may have experienced loss of muscle mass, which may falsely bias eGFR higher post-illness.^{40,41,42}

Study strengths include its large, multicenter, prospective design, with carefully matched participants, and broad inclusion criteria. The verification of some of the findings in an independent prospective cohort may favor the generalizability of the results. We collected data in a rigorous and structured manner and also systematically quantified post-AKI biomarkers at a uniform point in time relative to hospital discharge. In addition, we adjudicated clinical events after a long-term period of evaluation, which allows assessment for insidious conditions such as CKD. Nonetheless, study participants were predominantly white, high-risk individuals with prevalent comorbid conditions. In terms of limitations, it is unclear if these biomarkers could exhibit the same high performance in a less sick population. Further, the assays used in ASSESS and ARID were different, and thus, the biomarker concentration threshold at which the outcome risk is the highest could not be cross validated. Moreover, this study did not consider additional factors such as recurrent AKI or incidental hospitalizations which could arguably alter biomarker measurements and outcomes. Finally, the sample size of ARID was smaller than ASSESS-AKI.

In conclusion, sTNFR1 and sTNFR2 measured 3 months after hospital discharge were independently associated with kidney disease progression, heart failure and death, regardless of AKI status in the index admission. There was a linear association between incremental levels of these biomarkers and individual adverse outcomes. Evaluating post-discharge plasma sTNFR1 and sTNFR2 levels among hospital survivors, particularly in those who experienced AKI, may help in the risk-stratification of patients before the development of long-term kidney and cardiovascular sequelae.

Author contributions:

*SGC and GVR contributed equally to the intellectual content and elaboration of this manuscript. SGC, GVR, HTP, and CRP drafted the manuscript. SGC, GVR, HTP, and CRP analyzed the data. For the ARID study team: Designed the study and oversaw its delivery: NMS; carried out data collection: RP; performed and oversaw biomarker analysis: REB, EM, CR; performed data analysis: MW; provided input on data analysis: NMS, REB, CR, MJK, EM. All authors participated in the conception and design of the study, acquisition or interpretation of the data, critical revision of the article for important intellectual content, and final approval of the version to be published.

Conflict of interest:

SGC has salary support from NIH grants R01DK115562, UO1DK106962, R01HL085757, R01DK112258, R01DK126477 and UH3DK114920. SGC reports personal income and equity and stock options from Renalytix and pulseData; he also reports personal income from Axon Therapeutics, Bayer, Boehringer-Ingelheim, CHF Solutions, ProKidney, Vifor, and Takeda. EDS reports personal income from Akebia Therapeutics, Da Vita, and UpToDate; he also serves as an associate editor for the Clinical Journal of the American Society of Nephrology. DGM is supported by an NIH K23 grant (K23DK117065) and by the Yale O'Brien Kidney Center (P30DK079310). SGM is supported by AHA (18CDA34110151), the Yale O'Brien Kidney Center, and the Patterson Trust Fund. NIH (R01HL085757 to CRP) funded the TRIBE-AKI Consortium. PLK reports being an editor of the textbook Chronic Renal Disease and the monograph Psychosocial Aspects of Chronic Kidney Disease. CRP is supported by NIH grant K24DK090203 and the P30DK079310 O'Brien Kidney Center Grant. CRP reports personal income and equity and stock options from Renalytix; he also reports personal income from Genfit Biopharmaceutical Company and Akebia Therapeutics. E.M., C.R. and M.J.K. are

employees of Randox but do not own shares in the company. The remaining authors declare that they have no relevant financial interests.

Acknowledgements:

The authors would like to thank all of the ASSESS-AKI study participants, research coordinators, and support staff for making this study possible. The ASSESS-AKI was supported by cooperative agreements from the NIDDK (U01DK082223, U01DK082185, U01DK082192, and U01DK082183). We also acknowledge funding support from NIH grants R01HL085757, R01DK098233, R01DK101507, R01DK114014, K23DK100468, R03DK111881, R01DK093771, K01DK120783, P30DK079310, and P30DK114809. The ARID study was funded by a grant from Kidney Research UK (RP13/2015). The funder did not have any role in study design, data collection, analysis, reporting, or the decision to submit for publication. The ARID study would like to acknowledge the support provided by John Lamont and Peter FitzGerald from Randox Laboratories Ltd. The results opinions expressed in this paper do not necessarily reflect those of the National Institute of Diabetes Digestive and Kidney Diseases, the National Institutes of Health, the Department of health and Human Services or the government of the United States.

References:

1. Coca SG, Singanamala S, Parikh CR. Chronic kidney disease after acute kidney injury: a systematic review and meta-analysis. *Kidney Int.* 2012;81(5):442-448.
2. Parr SK, Siew ED. Delayed Consequences of Acute Kidney Injury. *Adv Chronic Kidney Dis.* 2016;23(3):186-194.
3. Hansen MK, Gammelager H, Jacobsen CJ, et al. Acute Kidney Injury and Long-term Risk of Cardiovascular Events After Cardiac Surgery: A Population-Based Cohort Study. *J Cardiothorac Vasc Anesth.* 2015;29(3):617-625.
4. Matsuura R, Iwagami M, Moriya H, et al. The Clinical Course of Acute Kidney Disease after Cardiac Surgery: A Retrospective Observational Study. *Sci Rep.* 2020;10(1):6490.
5. Saran R, Li Y, Robinson B, et al. US Renal Data System 2015 Annual Data Report: Epidemiology of Kidney Disease in the United States. *Am J Kidney Dis.* 2016;67(3 Suppl 1):Svii, S1-305.
6. Silver SA, Siew ED. Follow-up Care in Acute Kidney Injury: Lost in Transition. *Adv Chronic Kidney Dis.* 2017;24(4):246-252.
7. Chawla LS, Eggers PW, Star RA, Kimmel PL. Acute kidney injury and chronic kidney disease as interconnected syndromes. *N Engl J Med.* 2014;371(1):58-66.
8. See EJ, Jayasinghe K, Glassford N, et al. Long-term risk of adverse outcomes after acute kidney injury: a systematic review and meta-analysis of cohort studies using consensus definitions of exposure. *Kidney Int.* 2019;95(1):160-172.
9. Pannu N, James M, Hemmelgarn BR, et al. Modification of outcomes after acute kidney injury by the presence of CKD. *Am J Kidney Dis.* 2011;58(2):206-213.
10. Ostermann M, Zarbock A, Goldstein S, et al. Recommendations on Acute Kidney Injury Biomarkers From the Acute Disease Quality Initiative Consensus Conference: A Consensus Statement. *JAMA Netw Open.* 2020;3(10):e2019209.

11. McBride WT, Kurth MJ, McLean G, et al. Stratifying risk of acute kidney injury in pre and post cardiac surgery patients using a novel biomarker-based algorithm and clinical risk score. *Sci Rep*. 2019;9(1):16963.
12. Kurth MJ, McBride WT, McLean G, et al. Acute kidney injury risk in orthopaedic trauma patients pre and post surgery using a biomarker algorithm and clinical risk score. *Sci Rep*. 2020;10(1):20005.
13. Bhatraju PK, Zelnick LR, Shlipak M, Katz R, Kestenbaum B. Association of Soluble TNFR-1 Concentrations with Long-Term Decline in Kidney Function: The Multi-Ethnic Study of Atherosclerosis. *J Am Soc Nephrol*. 2018;29(11):2713-2721.
14. Ye X, Luo T, Wang K, et al. Circulating TNF receptors 1 and 2 predict progression of diabetic kidney disease: A meta-analysis. *Diabetes Metab Res Rev*. 2019;35(8):e3195.
15. Salimi S, Shardell MD, Seliger SL, Bandinelli S, Guralnik JM, Ferrucci L. Inflammation and Trajectory of Renal Function in Community-Dwelling Older Adults. *J Am Geriatr Soc*. 2018;66(4):804-811.
16. Wilson M, Packington R, Sewell H, et al. Biomarkers During Recovery From AKI to Improve Prediction of Long-term Reductions in Estimated GFR. *Am J Kidney Dis*.10.1053/j.ajkd.2021.08.017
17. Murugan R, Wen X, Keener C, et al. Associations between Intensity of RRT, Inflammatory Mediators, and Outcomes. *Clin J Am Soc Nephrol*. 2015;10(6):926-933.
18. Kellum JA, Sileanu FE, Bihorac A, Hoste EA, Chawla LS. Recovery after Acute Kidney Injury. *Am J Respir Crit Care Med*. 2017;195(6):784-791.
19. Bagshaw SM. Epidemiology of renal recovery after acute renal failure. *Curr Opin Crit Care*. 2006;12(6):544-550.
20. Amdur RL, Chawla LS, Amodeo S, Kimmel PL, Palant CE. Outcomes following diagnosis of acute renal failure in U.S. veterans: focus on acute tubular necrosis. *Kidney Int*. 2009;76(10):1089-1097.

21. Chawla LS, Amdur RL, Shaw AD, Faselis C, Palant CE, Kimmel PL. Association between AKI and long-term renal and cardiovascular outcomes in United States veterans. *Clin J Am Soc Nephrol*. 2014;9(3):448-456.
22. Heung M, Steffick DE, Zivin K, et al. Acute Kidney Injury Recovery Pattern and Subsequent Risk of CKD: An Analysis of Veterans Health Administration Data. *Am J Kidney Dis*. 2016;67(5):742-752.
23. McAdams M, Ortiz-Soriano V, Jordan M, et al. Kidney recovery in patients discharged to an acute rehabilitation facility with acute kidney injury requiring hemodialysis. *Clin Nephrol*. 2019;92(1):15-24.
24. Siew ED, Abdel-Kader K, Perkins AM, et al. Timing of Recovery From Moderate to Severe AKI and the Risk for Future Loss of Kidney Function. *Am J Kidney Dis*. 2020;75(2):204-213.
25. Ishani A, Xue JL, Himmelfarb J, et al. Acute kidney injury increases risk of ESRD among elderly. *J Am Soc Nephrol*. 2009;20(1):223-228.
26. Go AS, Parikh CR, Ikizler TA, et al. The assessment, serial evaluation, and subsequent sequelae of acute kidney injury (ASSESS-AKI) study: design and methods. *BMC Nephrol*. 2010;11:22.
27. Horne KL, Packington R, Monaghan J, Reilly T, Selby NM. Three-year outcomes after acute kidney injury: results of a prospective parallel group cohort study. *BMJ Open*. 2017;7(3):e015316.
28. Levey AS, Stevens LA, Schmid CH, et al. A new equation to estimate glomerular filtration rate. *Ann Intern Med*. 2009;150(9):604-612.
29. Selby NM, Crowley L, Fluck RJ, et al. Use of electronic results reporting to diagnose and monitor AKI in hospitalized patients. *Clin J Am Soc Nephrol*. 2012;7(4):533-540.
30. Horne KL, Shardlow A, Taal MW, Selby NM. Long Term Outcomes after Acute Kidney Injury: Lessons from the ARID Study. *Nephron*. 2015;131(2):102-106.

31. Mahmood SS, Wang TJ. The epidemiology of congestive heart failure: the Framingham Heart Study perspective. *Glob Heart*. 2013;8(1):77-82.
32. Mehta S, Chauhan K, Patel A, et al. The prognostic importance of duration of AKI: a systematic review and meta-analysis. *BMC Nephrol*. 2018;19(1):91.
33. Coca SG, King JT, Jr., Rosenthal RA, Perkal MF, Parikh CR. The duration of postoperative acute kidney injury is an additional parameter predicting long-term survival in diabetic veterans. *Kidney Int*. 2010;78(9):926-933.
34. Basile DP, Bonventre JV, Mehta R, et al. Progression after AKI: Understanding Maladaptive Repair Processes to Predict and Identify Therapeutic Treatments. *J Am Soc Nephrol*. 2016;27(3):687-697.
35. Legrand M, Rossignol P. Cardiovascular Consequences of Acute Kidney Injury. *N Engl J Med*. 2020;382(23):2238-2247.
36. Schulz R, Heusch G. Tumor necrosis factor-alpha and its receptors 1 and 2: Yin and Yang in myocardial infarction? *Circulation*. 2009;119(10):1355-1357.
37. Carlsson AC, Ruge T, Kjoller E, et al. 10-Year Associations Between Tumor Necrosis Factor Receptors 1 and 2 and Cardiovascular Events in Patients With Stable Coronary Heart Disease: A CLARICOR (Effect of Clarithromycin on Mortality and Morbidity in Patients With Ischemic Heart Disease) Trial Substudy. *J Am Heart Assoc*. 2018;7(9).
38. Nilsson L, Szymanowski A, Swahn E, Jonasson L. Soluble TNF receptors are associated with infarct size and ventricular dysfunction in ST-elevation myocardial infarction. *PLoS One*. 2013;8(2):e55477.
39. Bae E, Cha RH, Kim YC, et al. Circulating TNF receptors predict cardiovascular disease in patients with chronic kidney disease. *Medicine (Baltimore)*. 2017;96(19):e6666.
40. Prowle JR, Kolic I, Purdell-Lewis J, Taylor R, Pearse RM, Kirwan CJ. Serum creatinine changes associated with critical illness and detection of persistent renal dysfunction after AKI. *Clin J Am Soc Nephrol*. 2014;9(6):1015-1023.

41. Sunder S, Jayaraman R, Mahapatra HS, et al. Estimation of renal function in the intensive care unit: the covert concepts brought to light. *J Intensive Care*. 2014;2(1):31.
42. Wetmore JB, Liu J, Li S, et al. The Healthy People 2020 Objectives for Kidney Disease: How Far Have We Come, and Where Do We Need to Go? *Clin J Am Soc Nephrol*. 2017;12(1):200-209.

Table 1. Patients' characteristics on admission and by 3-month stratified by quartiles of plasma sTNFR1 concentrations in ASSESS-AKI

Characteristics on admission	Plasma sTNFR1 Quartiles (pg/mL)				P-value
	Q1 957-2066 (N=369)	Q2 2067-2829 (N=368)	Q3 2831-4162 (N=369)	Q4 4164-30374 (N=368)	
Age (SD)	58.3 (13.6)	65.5 (11.9)	67.5 (11.3)	66.9 (11.8)	<.001
Female	133 (36%)	121 (33%)	142 (38%)	142 (39%)	0.3
Black	54 (15%)	44 (12%)	39 (11%)	53 (14%)	0.2
Hispanic/Latino ethnicity	8 (2%)	7 (2%)	14 (4%)	6 (2%)	0.2
Smoker	57 (15%)	48 (13%)	46 (12%)	44 (12%)	0.1
Chronic liver disease	4 (1%)	9 (2%)	17 (5%)	27 (7%)	<.001
Chronic obstructive pulmonary disease	57 (15%)	76 (21%)	90 (24%)	99 (27%)	0.006
Diabetes	101 (27%)	139 (38%)	158 (43%)	230 (63%)	<.001
Sepsis	24 (7%)	36 (10%)	37 (10%)	43 (12%)	0.1
Heart failure	36 (10%)	49 (13%)	84 (23%)	143 (39%)	<.001
Cardiovascular disease	126 (34%)	166 (45%)	176 (48%)	202 (55%)	<.001
Chronic kidney disease	21 (6%)	94 (26%)	180 (49%)	289 (79%)	<0.01
Acute kidney injury	127 (34%)	157 (43%)	195 (53%)	247 (67%)	<.001
3-month follow-up measurements					
Body mass index (kg/m ²)	29.5 (6.5)	31.1 (7.3)	31.2 (7.9)	32.4 (8.5)	<.001
Estimated glomerular filtration rate, mL/min/1.73m ²	90.19 (18.8)	76.58 (19.4)	65.51 (19.9)	45.38 (21%)	<.001
Urine albumin-to-creatinine ratio, mg/g (median, IQR)	0.1 (0.1, 0.2)	0.1 (0.1, 0.2)	0.19 (0.1, 0.6)	0.55 (0.1, 7.4)	<.001
Plasma C reactive protein, mg/L (median, IQR)	1.9 (0.9, 3.9)	3.11 (1.5, 6.2)	4.5 (2.1, 8.7)	6.81 (3.1, 13.3)	<.001

Foot note: Breakdown of unknown characteristics on admission: smoking status (13 participants), chronic liver disease (1 participant), chronic obstructive pulmonary disease (5 participants), heart failure (1 participants), cardiovascular disease (3 participants). Breakdown of missing data on

3-month follow-up measurements: body mass index (2 participants), urine albumin-to-creatinine ratio (7 participants), plasma C reactive protein (11 participants)

Table 2. Associations between plasma sTNFR1 and sTNFR2 concentrations with outcomes in ASSESS-AKI

Biomarker	Range, pg/mL (Min, Max)	Kidney Disease Progression†		Heart Failure		All-Cause Mortality		ESRD	
		Mean (95%CI) event rate per 1000 PY	Adjusted* Hazard Ratio (95%CI)	Mean (95%CI) event rate per 1000 PY	Adjusted* Hazard Ratio (95%CI)	Mean (95%CI) event rate per 1000 PY	Adjusted* Hazard Ratio (95%CI)	Mean (95%CI) event rate per 1000 PY	Unadjusted Hazard Ratio (95%CI)
sTNFR1 (pg/mL)	Log ₂ Transformed	46.1 (41, 51.8)	2.9 (2.2, 3.9)	33.3 (29, 38.1)	1.9 (1.4, 2.5)	45.4 (40.6, 50.8)	3.3 (2.5, 4.3)	7.6 (4.7, 10.0)	18.2 (11.1, 29.80)
	Q1 (957, 2066)	15.9 (11.1, 22.9)	1 (ref)	13.3 (8.9, 19.8)	1 (ref)	13.9 (9.5, 20.4)	1 (ref)	0	
	Q2 (2067, 2829)	39.2 (30.7, 50.1)	2.4 (1.5, 3.9)	18.1 (12.7, 25.7)	0.9 (0.6, 1.7)	29.7 (22.7, 38.9)	1.9 (1.1, 3)	0	
	Q3 (2831, 4162)	53.5 (42.9, 66.8)	3.8 (2.3, 6.4)	31.8 (24.1, 41.9)	1.3 (0.8, 2.3)	46.7 (37.4, 58.3)	2.6 (1.5, 4.2)	3.0 (1.3, 7.2)	
	Q4 (4164, 30374)	93.1 (77.1, 112.3)	4.7 (2.6, 8.6)	86.3 (71.3, 104.5)	2.3 (1.3, 4.3)	104.9 (89.3, 123.2)	4.9 (2.8, 8.6)	34.4 (25.7, 46.1)	
sTNFR2 (pg/mL)	Log ₂ Transformed	46.1 (41, 51.8)	1.9 (1.5, 2.5)	33.3 (29, 38.1)	1.5 (1.2, 2)	45.4 (40.6, 50.8)	2.5 (1.9, 3.1)	7.6 (4.7, 10.0)	10.9 (7.07, 17.08)
	Q1 (2022, 4756)	18.4 (13.1, 25.9)	1 (ref)	14.6 (9.9, 21.4)	1 (ref)	17.4 (12.3, 24.6)	1 (ref)	0	
	Q2 (4758, 6651)	39.1 (30.4, 50.1)	1.9 (1.2, 3.2)	15.3 (10.4, 22.4)	0.8 (0.4, 1.3)	29.7 (22.6, 39)	1.5 (0.9, 2.4)	0.6 (0.1, 4.1)	
	Q3 (6652, 9693)	54.5 (43.8, 67.8)	3.3 (2.1, 5.2)	38 (29.5, 49)	1.4 (0.8, 2.3)	39.5 (31.1, 50.2)	1.7 (1.1, 2.7)	3.6 (1.6, 7.9)	
	4 th (9710, 53522)	85.8 (70.8, 104)	3.3 (1.9, 5.7)	78.2 (64.1, 95.3)	1.9 (1.1, 3.3)	106.8 (91.2, 125)	3.9 (2.4, 6.3)	32.0 (23.7, 43.2)	

Footnote: Analysis obtained within a median of 4.4 years (IQR2.5, 5.7).

CI: confidence interval; PY: person-year; sTNFR1: soluble tumor necrosis factor α receptor 1; sTNFR2: soluble tumor necrosis α receptor 2.

†Kidney disease progression is the composite outcome including chronic kidney disease incidence, progression of pre-existing chronic kidney disease and end-stage kidney disease.

*Adjusted for race, sex, age, body mass index at 3 months, smoking status, history COPD, CVD, AKI status (vs. no AKI), CKD status (vs. no CKD), sepsis during hospitalization, 3-month eGFR, 3-month UACR, C-Reactive protein at 3 months, and clinical site

Supplemental Table 1. Patients' characteristics on admission and by 3-month stratified by quartiles of plasma sTNFR2 concentrations in ASSESS-AKI

Characteristics on admission	Plasma sTNFR2 Quartiles (pg/mL)				P- value
	Q1 2022, 4756 (N=368)	Q2 4758, 6651 (N=369)	Q3 6652, 9693 (N=369)	Q4 9710, 53522 (N=368)	
Age (SD)	60 (13.4)	64.9 (12.5)	66.9 (11.9)	66.6 (11.8)	<.001
Female	129 (35%)	124 (34%)	146 (40%)	139 (38%)	0.3
Black	41 (11%)	44 (12%)	55 (15%)	50 (14%)	0.4
Hispanic/Latino ethnicity	8 (2%)	10 (3%)	11 (3%)	6 (2%)	0.6
Smoker	56 (15%)	48 (13%)	47 (13%)	44 (12%)	0.1
Chronic liver disease	2 (1%)	8 (2%)	18 (5%)	29 (8%)	<.001
Chronic obstructive pulmonary disease	55 (15%)	81 (22%)	88 (24%)	98 (27%)	0.013
Diabetes	95 (26%)	153 (41%)	153 (41%)	227 (62%)	<.001
Sepsis	25 (7%)	40 (11%)	30 (8%)	45 (12%)	0.04
Heart failure	34 (9%)	61 (17%)	92 (25%)	125 (34%)	<.001
Cardiovascular disease	130 (35%)	159 (43%)	183 (50%)	198 (54%)	<.001
Chronic kidney disease	34 (9%)	100 (27%)	175 (47%)	275 (75%)	<.001
Acute kidney injury	131 (36%)	159 (43%)	192 (52%)	244 (66%)	<.001
3-month follow-up measurements					
Body mass index (kg/m ²)	29.9 (6.7)	30.9 (7.5)	31.1 (7.8)	32.2 (8.35)	0.007
Estimated glomerular filtration rate, mL/min/1.73m ²	87.5 (18.3)	75.9 (21.9)	66.3 (21.7)	47.9 (22.8)	<.001
Urine albumin-to-creatinine ratio, mg/g (median, IQR)	0.1 (0.1, 0.2)	0.1 (0.1, 0.3)	0.2 (0.1, 0.7)	0.5 (0.1, 4.9)	<.001
Plasma C reactive protein, mg/L (median, IQR)	1.9 (0.9, 4.6)	3.5 (1.7, 6.6)	3.7 (1.8, 7.8)	6.5 (3, 12.9)	<.001

Supplemental Table 2. Spearman Correlation Table of sTNFR1 and sTNFR2 with eGFR, UACR and CRP in ASSESS-AKI

	sTNFR2	eGFR	CRP	UACR
sTNFR1	0.93 p<.0001	-0.67 p<.0001	0.38 p<.0001	0.42 p<.0001
sTNFR2		-0.60 p<.0001	0.34 p<.0001	0.39 p<.0001
eGFR			-0.12 p<.0001	-0.28 p<.0001
CRP				0.16 p<.0001

CRP: C-reactive protein; eGFR: estimated glomerular filtration rate; soluble tumor necrosis factor α receptor 1; sTNFR2: soluble tumor necrosis α receptor 2; UACR: urine albumin-to creatinine ratio

Supplemental Table 3. Plasma sTNFR1 and sTNFR2 and kidney disease progression events stratified by AKI at the index hospitalization in ASSESS-AKI

Biomarker		Kidney Disease Progression Events, n (%)		Interaction p-value*
		AKI at Index Hospitalization		
		No (n=748)	Yes (n=726)	
Overall		89 (12%)	191 (26%)	...
TNFR1 (quartiles)	Q1	14 (6%)	15 (12%)	0.74
	Q2	28 (13%)	36 (23%)	
	Q3	24 (14%)	54 (28%)	
	Q4	23 (19%)	86 (35%)	
TNFR2 (quartiles)	Q1	17 (7%)	16 (12%)	0.54
	Q2	26 (12%)	36 (23%)	
	Q3	26 (15%)	55 (29%)	
	Q4	20 (16%)	84 (34%)	

Footnote: Median follow up of 4.4 (IQR 2.5, 5.7) years. Patients that experienced AKI had higher concentrations of sTNFR1 [median (IQR) 3238 (2296, 4886)] and sTNFR2 [median (IQR) 7550 (5481, 11528)] at 3 months, compared to those without AKI: 2554 (1917, 3449) for sTNFR1, and 5835 (4424, 8137) for sTNFR2.

*Interaction p-values are from the interaction term of a cox regression model of the biomarker, AKI at index hospitalization and the interaction between AKI and the biomarker.

Supplemental Table 4. Patients' characteristics by kidney disease progression up to 3 years in ARID vs. ASSESS-AKI

Characteristic			ARID (n=964)			ASSESS (n=1474)			
			Kidney Disease Progression up to 3 years			Kidney Disease Progression Up to 3 years			
			No (n=762)	Yes (n=202)	p-value	No (n=1299)	Yes (n=175)	p-value	
Age (years)			70 (21-84)	73 (20-84)	<0.01	66.1 (56.9, 74.3)	64.3 (55.7, 72.3)	0.2	
Female			359 (47.1%)	83 (41.1%)	0.1	470 (36%)	68 (39%)	0.4	
White			708 (92.9%)	194 (96%)	0.113	1091 (84%)	125 (71%)	<.001	
Smoking status (current smoker)			46 (6.6%)	11 (6%)	0.9	175 (13%)	20 (11%)	0.4	
Pulmonary disease			120 (15.7%)	38 (18.8%)	0.3	284 (22%)	38 (22%)	0.7	
Cardiovascular disease			108 (14.2%)	49 (24.3%)	<0.01	251 (19%)	61 (35%)	<0.01	
Acute kidney injury			313 (41.1%)	175 (86.6%)	<0.01	588 (45%)	138 (79%)	<0.01	
Baseline CKD (mL/min/1.73m²)	eGFR ≥ 60		555 (72.8%)	125 (61.9%)	0.01	774 (60%)	116 (66%)	<.001	
	eGFR 45-59		126 (16.5%)	42 (20.8%)		305 (23%)	13 (7%)		
	eGFR 30-44		59 (7.7%)	23 (11.4%)		165 (13%)	14 (8%)		
	eGFR 15-29		22 (2.9%)	12 (5.9%)		55 (4%)	32 (18%)		
UACR (mg/mmol)			0.9 (0-936)	4.4 (0-1190)	<0.01	0.13 (0.1, 0.4) (mg/g)	0.47 (0.1, 10.9) (mg/g)	<.001	
CRP (mg/L)			2.4 (0.2-61.8)	3.0 (0.2-94.9)	<0.01	3.44 (1.4, 7.4)	4.71 (2.4, 10.9)	<.001	
sTNFR1		Range (ng/mL)	2.2 (0-24.8)	3.3 (0.3-15.9)	<0.01	Range (pg/mL)	2709 (2004, 3853)	4017 (2944, 7585)	<.001
sTNFR1 (quartiles)	1	0.05, 1.87	227 (30.1%)	14 (7.2%)	<0.01	957, 2066	360 (28%)	9 (5%)	<.001
	2	1.87, 2.42	208 (27.6%)	25 (12.9%)		2067, 2829	337 (26%)	31 (18%)	
	3	2.42, 3.30	182 (24.2%)	55 (28.4%)		2831, 4162	318 (24%)	51 (29%)	
	4	3.30, 24.77	136 (18.1%)	100 (51.5%)		4164, 30374	284 (22%)	84 (48%)	
sTNFR2		Range (ng/mL)	1.0 (0.1-11.8)	1.6 (0.1-12.3)	<0.01	Range (pg/mL)	6273 (4591, 9073)	9299 (6641, 15394)	<.001
sTNFR2 (quartiles)	1	0.12, 0.74	228 (30.2%)	17 (8.5%)	<0.01	2022, 4756	359 (28%)	9 (5%)	<.001
	2	0.74, 1.13	207 (27.4%)	30 (14.9%)		4758, 6651	334 (26%)	35 (20%)	
	3	1.13, 1.65	177 (23.4%)	61 (30.3%)		6652, 9693	319 (25%)	50 (29%)	
	4	1.65, 12.29	143 (18.9%)	93 (46.3%)		9710, 53522	287 (22%)	81 (46%)	

Foot note: Follow-up up to 3 years. CKD: chronic kidney disease; CRP: c-reactive protein; eGFR: estimated glomerular filtration rate; sTNFR1: tumor necrosis factor receptor 1; sTNFR2: tumor necrosis factor receptor 2; UACR: urine albumin-creatinine ratio.

Supplemental Table 5. Demographic and clinical characteristics by sTNFR1 and sTNFR2 quartiles in ARID

Characteristic	Plasma sTNFR1 (ng/mL)				P-value	Plasma sTNFR2 (ng/mL)				P-value	
	Q1 0.05, 1.87 (n=241)	Q2 1.87, 2.42 (n=233)	Q3 2.42, 3.30 (n=237)	Q4 3.30, 24.77 (n=236)		Q1 0.12, 0.74 (n=245)	Q2 0.74, 1.13 (n=237)	Q3 1.13, 1.65 (n=238)	Q4 1.65, 12.29 (n=236)		
Age (years)	66.0 (21.0-84.0)	70.0 (20.0-84.0)	74.0 (41.0-84.0)	74.0 (42.0-84.0)		68.0 (21.0-84.0)	70.0 (33.0-84.0)	73.0 (20.0-84.0)	74.0 (42.0-84.0)	<0.001	
Female	131 (54.4)	106 (45.5)	103 (43.5)	96 (40.7)	0.018	139 (56.7)	107 (45.1)	99 (41.6)	91 (38.6)	<0.001	
White	216 (89.6)	216 (92.7)	227 (95.8)	226 (95.8)	0.017	222 (90.6)	223 (94.1)	224 (94.1)	225 (95.3)	0.174	
Smoking status (current smoker)	9 (3.8)	23 (10.6)	11 (5.1)	13 (6.6)	0.061	18 (7.7)	13 (5.9)	13 (5.9)	13 (6.5)	0.271	
Pulmonary disease	34 (14.1)	41 (17.6)	39 (16.5)	42 (17.8)	0.684	28 (11.4)	41 (17.3)	47 (19.7)	41 (17.4)	0.084	
Cardiovascular disease	19 (7.9)	33 (14.2)	35 (14.8)	67 (28.4)	<0.001	18 (7.3)	33 (13.9)	38 (16.0)	67 (28.4)	<0.001	
Acute kidney injury	78 (32.4)	101 (43.3)	133 (56.1)	163 (69.1)	<0.001	77 (31.4)	106 (44.7)	143 (60.1)	158 (66.9)	<0.001	
Baseline CKD stage (mL/min)	eGFR ≥ 60	228 (94.6)	190 (81.5)	157 (66.2)	101 (42.8)	<0.001	224 (91.4)	186 (78.5)	159 (66.8)	107 (45.3)	<0.001
	eGFR 45-59	12 (5.0)	37 (15.9)	60 (25.3)	57 (24.2)		17 (6.9)	43 (18.1)	56 (23.5)	50 (21.2)	
	eGFR 30-44	1 (0.4)	5 (2.1)	19 (8.0)	50 (21.2)		4 (1.6)	8 (3.4)	19 (8.0)	49 (20.8)	
	eGFR 15-29	0 (0.0)	1 (0.4)	1 (0.4)	28 (11.9)		0 (0.0)	0 (0.0)	4 (1.7)	30 (12.7)	
UACR (mg/mmol)	0.7 (0.0-101)	0.9 (0.0-101)	1.4 (0.0-494)	5.8 (0.0-1190)	<0.001	0.7 (0.0-494)	0.8 (0.0-142)	1.4 (0.0-196)	5.3 (0.0-1190)	<0.001	
CRP (mg/L)	1.6 (0.2-31.3)	1.9 (0.2-56.4)	2.9 (0.5-57.4)	4.7 (0.4-94.9)	<0.001	1.6 (0.2-56.4)	2.3 (0.2-45.5)	2.6 (0.4-57.4)	4.5 (0.5-94.9)	<0.001	

Foot note: Follow-up up to 3 years. CKD: chronic kidney disease; CRP: c-reactive protein; eGFR: estimated glomerular filtration rate; sTNFR1: tumor necrosis factor receptor 1; sTNFR2: tumor necrosis factor receptor 2; UACR: urine albumin-creatinine ratio.

Supplemental Table 6. sTNFR1 and sTNFR2 and kidney disease progression events up to 3 years stratified by AKI at Index Hospitalization in ASSESS-AKI and ARID

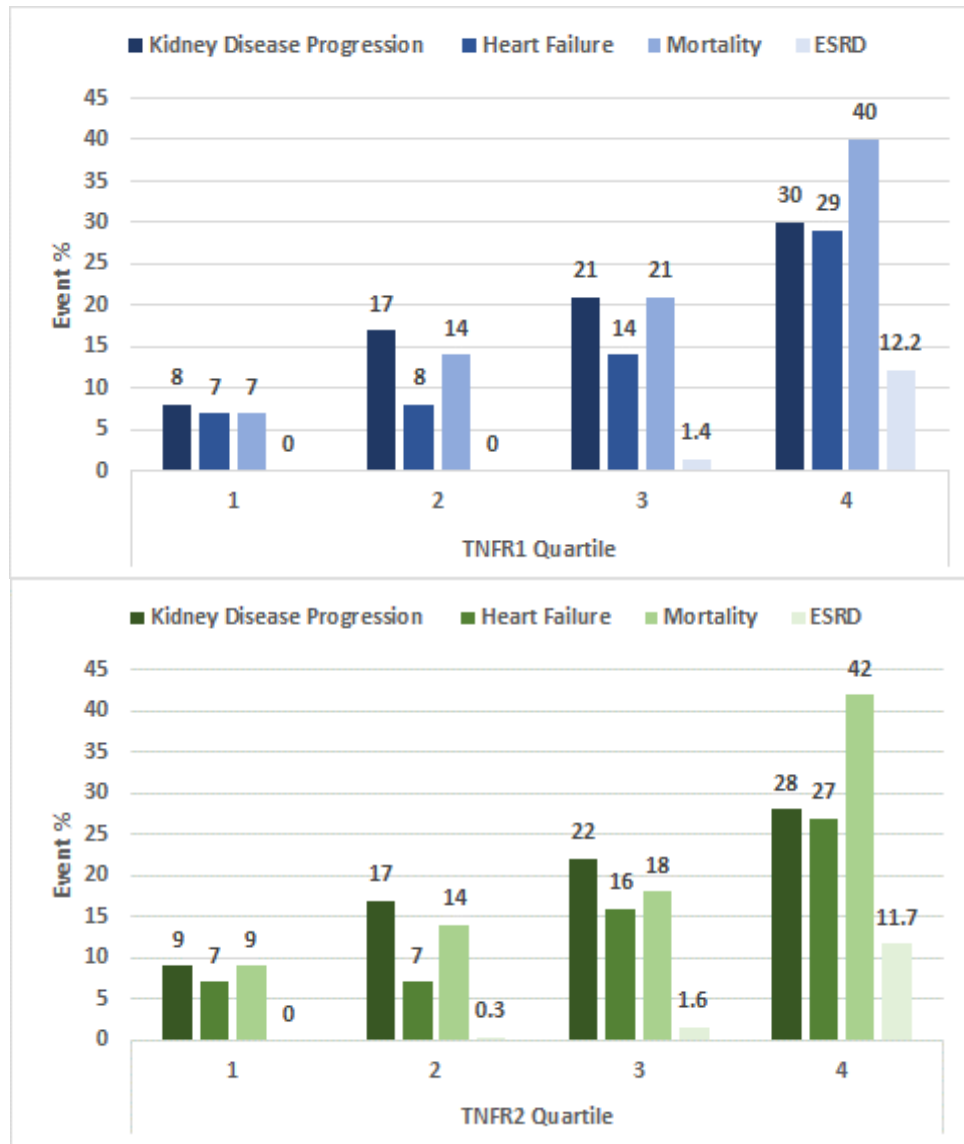
Biomarker		ASSESS-AKI			ARID		
		Kidney Disease Progression Events up to 3 years, n (%)		Interaction p-value*	Kidney Disease Progression Events up to 3 years, n (%)		Interaction p-value*
		AKI at Index Hospitalization			AKI at Index Hospitalization		
		No (n=748)	Yes (n=726)		No (n=476)	Yes (n=488)	
Overall		37 (5%)	138 (19%)	...	27 (6%)	175 (36%)	
TNFR1 (quartiles)	Q1	2 (0.8%)	7 (6%)	0.64	4 (1%)	10 (2%)	0.71
	Q2	11 (5%)	20 (13%)		4 (1%)	21 (4%)	
	Q3	13 (7%)	38 (19%)		9 (2%)	46 (9%)	
	Q4	11 (9%)	73 (30%)		10 (2%)	90 (18%)	
TNFR2 (quartiles)	Q1	2 (0.8%)	7 (5%)	0.52	7 (1%)	10 (2%)	0.01
	Q2	13 (6%)	22 (14%)		6 (1%)	24 (5%)	
	Q3	12 (7%)	38 (20%)		8 (2%)	53 (11%)	
	Q4	10 (8%)	71 (29%)		6 (1%)	87 (18%)	

Foot note: Follow-up up to 3 years. *Interaction p-values are from the interaction term of a logistic regression model of the biomarker, AKI at index hospitalization and the interaction between AKI and the biomarker.

Supplementary Table 7. Comparison of patients included and excluded in ASSESS-AKI analysis

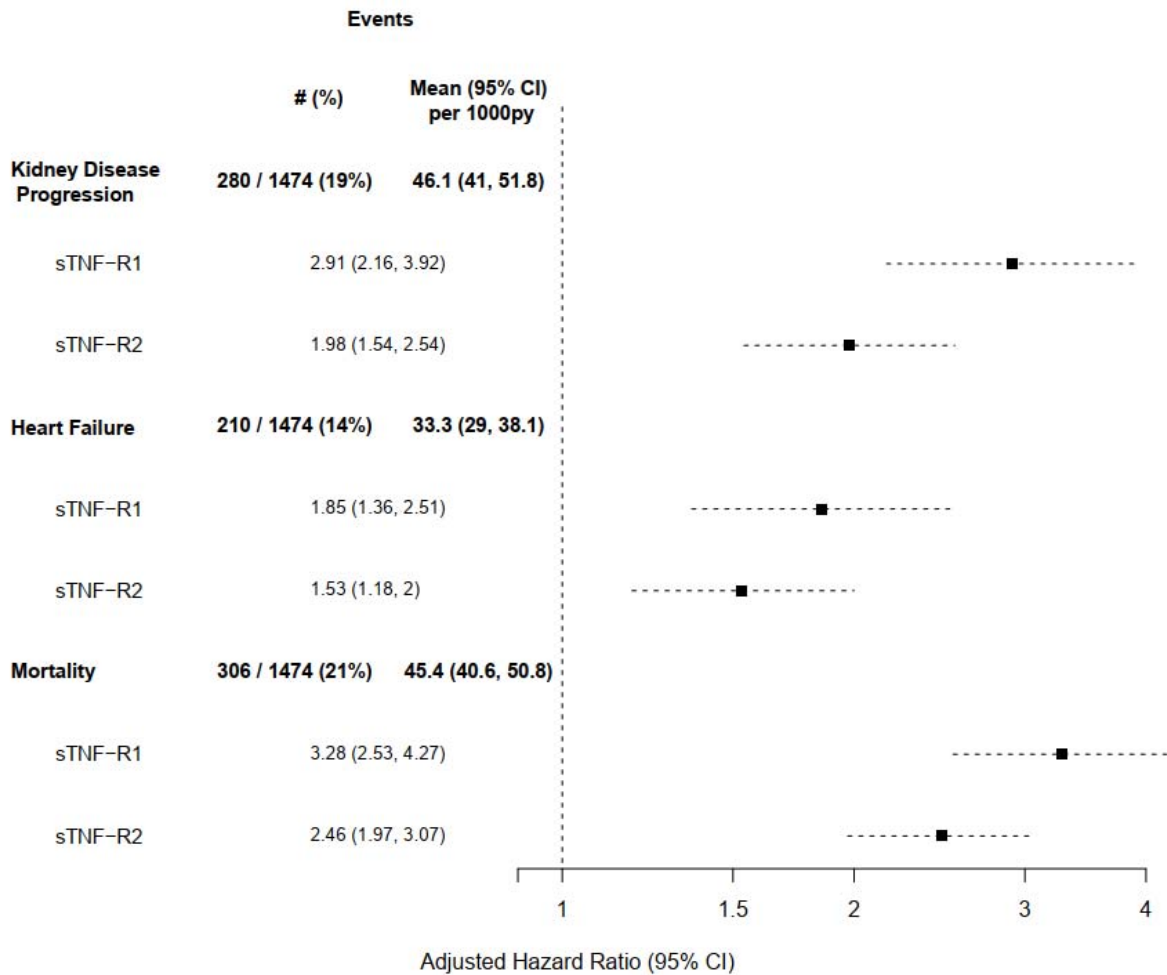
	Excluded (N=64)	Included (N=1474)	P**
Characteristics on admission			
Age	63.89 (13.36)	64.58 (12.69)	0.587
Female	36 (56%)	538 (36%)	0.001
Black	14 (22%)	190 (13%)	0.038
Hispanic/Latino Ethnicity	3 (5%)	35 (2%)	0.243
Smoker	7 (11%)	195 (13%)	0.856
Chronic liver disease	3 (5%)	57 (4%)	0.926
Chronic obstructive pulmonary disease	13 (20%)	322 (22%)	0.201
Diabetes	30 (47%)	628 (43%)	0.499
Sepsis	4 (6%)	140 (9%)	0.383
Heart failure	15 (23%)	312 (21%)	0.891
Cardiovascular disease	23 (36%)	670 (45%)	0.298
Chronic Kidney Disease	28 (44%)	584 (40%)	0.509
Acute Kidney Injury	43 (67%)	726 (49%)	0.005
3 month follow-up measurements			
Body mass index (kg/m ²)	31.78 (9.39) N=64	31.02 (7.63) N=1472	0.824
Estimated glomerular filtration rate, mL/min/1.73m ²	63.22 (27.92) N=64	69.43 (25.7) N=1474	0.076
Urine albumin-to-creatinine ratio, mg/g (median, IQR)	0.32 (0.1, 1.23) N=64	0.14 (0.07, 0.59) N=1467	0.005
Plasma C reactive protein, mg/L (median, IQR)	3.07 (1.81, 10.73) N=21	3.56 (1.5, 7.61) N=1463	0.995

Figure 1. Cumulative incidence of outcomes by quartiles of plasma sTNFR1 and sTNFR2 concentrations in ASSESS-AKI



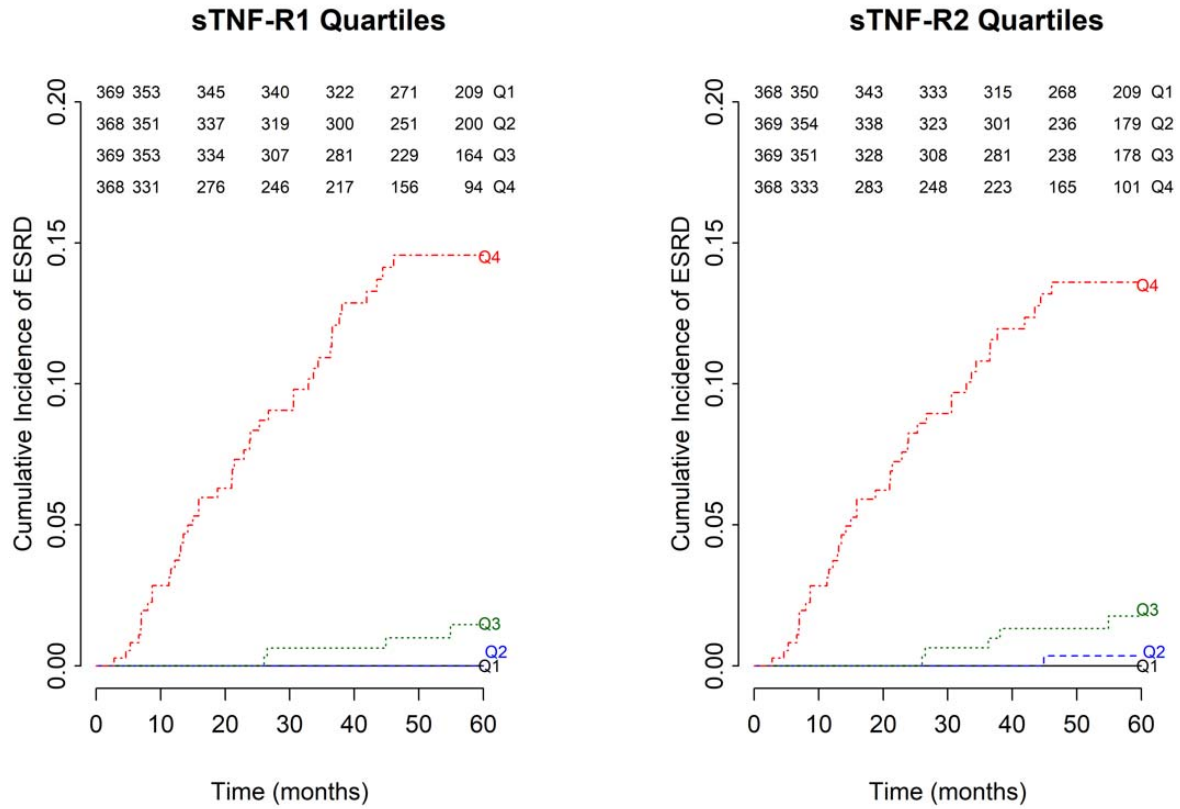
Footnote: 1474 ASSESS-AKI participants followed over a median follow-up of 4.4 (IQR 2.5, 5.7) years.

Figure 2. Forest plot demonstrating the adjusted HRs and 95% CIs for sTNFR1 and sTNFR2 at 3 months with adverse clinical outcomes in ASSESS-AKI.



Footnote: Outcomes in a median follow-up of 4.4 (IQR 2.5, 5.7) years. Hazard ratios were adjusted for race, sex, age, BMI, smoking status, history COPD, CVD, AKI status (vs. no AKI), CKD status (vs. no CKD), sepsis during hospitalization, 3-month eGFR, 3-month UACR, 3-month CRP, and clinical site. Biomarkers were log-base 2 transformed.

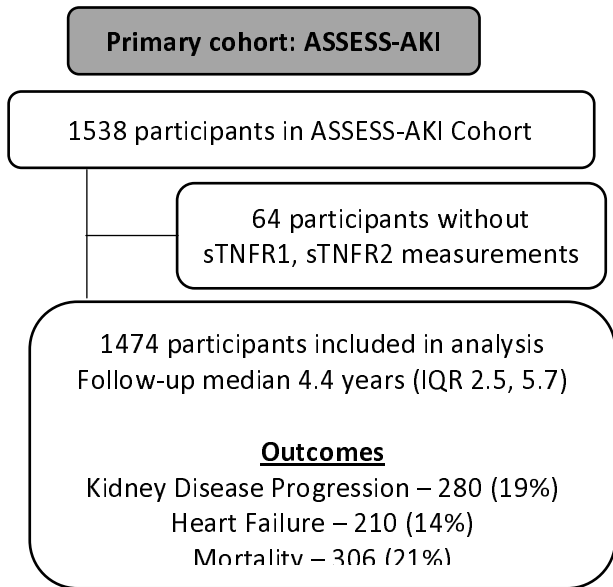
Figure 3. Time to ESKD events based upon sTNFR1 and sTNFR2 quartiles in ASSESS-AKI



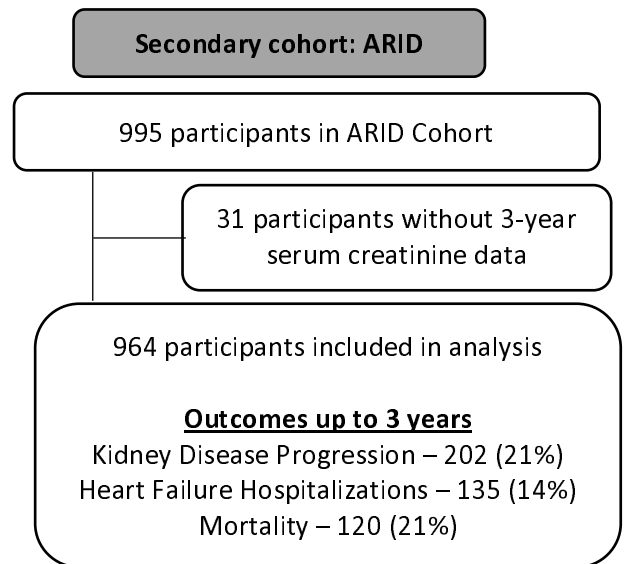
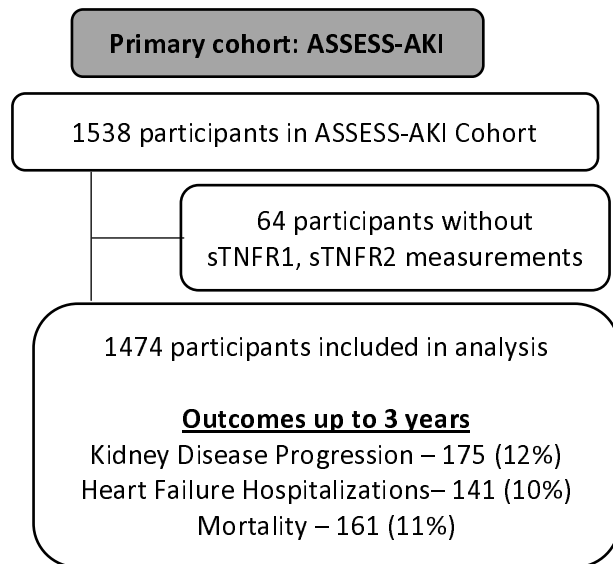
Footnote: Median follow-up of 4.4 (IQR 2.5, 5.7) years.

Supplementary Figure 1. Flow diagram for ASSESS-AKI and ARID

Primary Analysis – Association of sTNFR1 and sTNFR2 with time to event outcomes

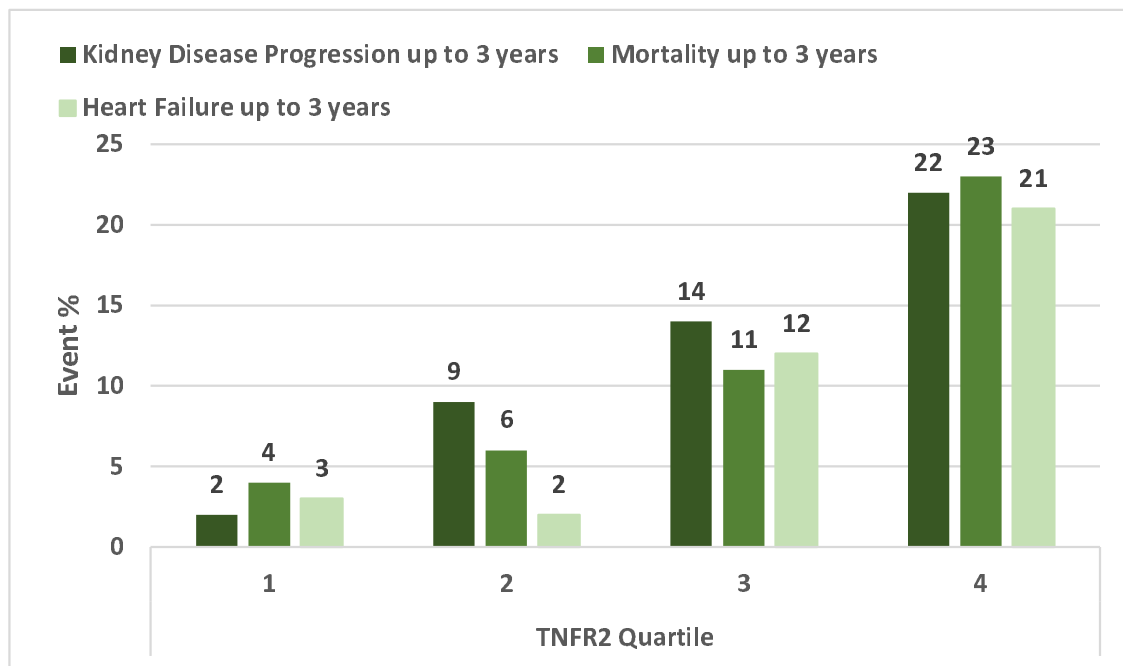
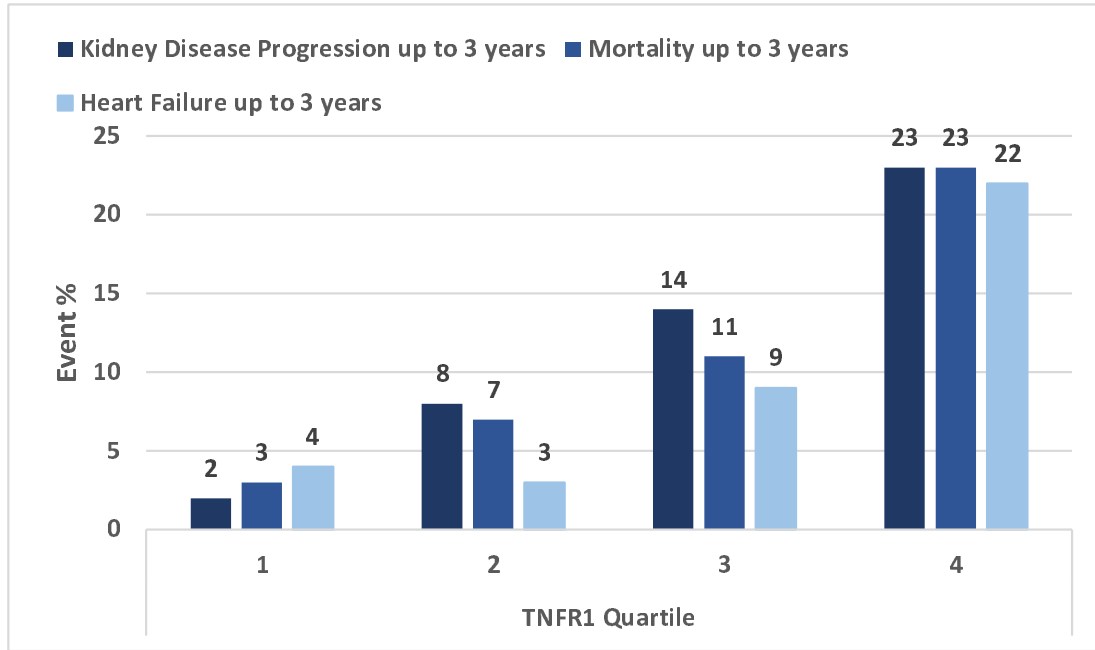


Secondary Analysis – Association of sTNFR1 and sTNFR2 with binary outcomes up to 3 years

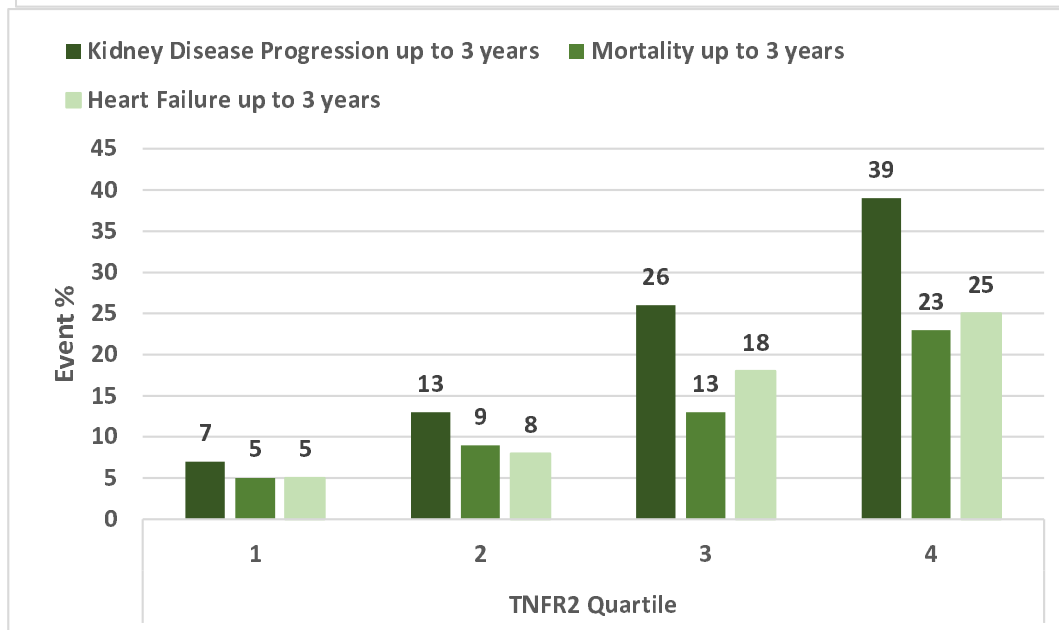
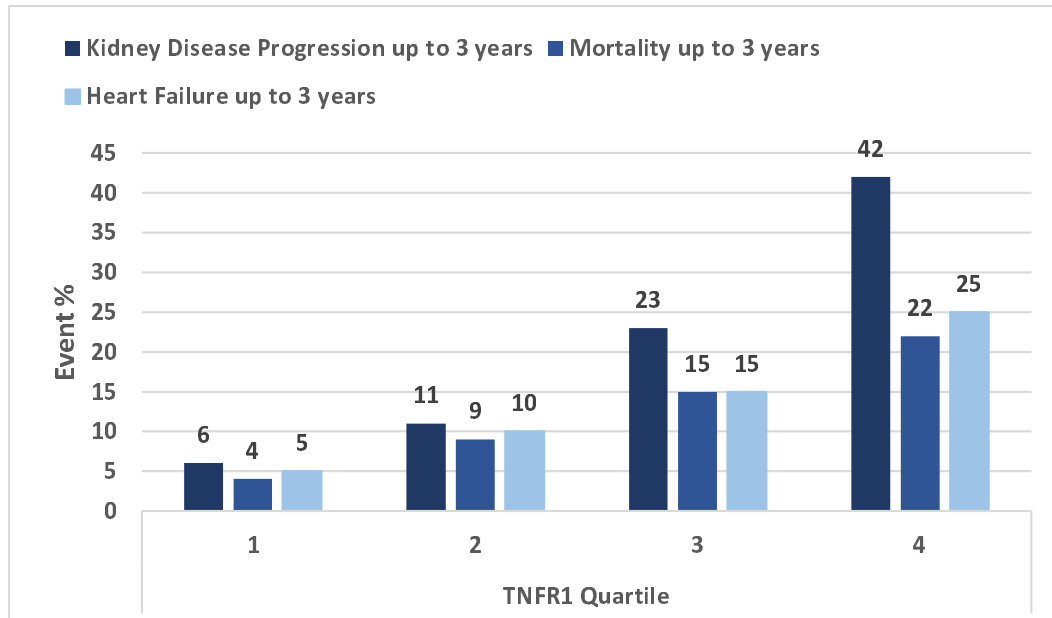


Supplementary Figure 2. Event rates of 3-year outcomes by quartiles of plasma sTNFR1 and sTNFR2 concentrations in ASSESS-AKI and ARID

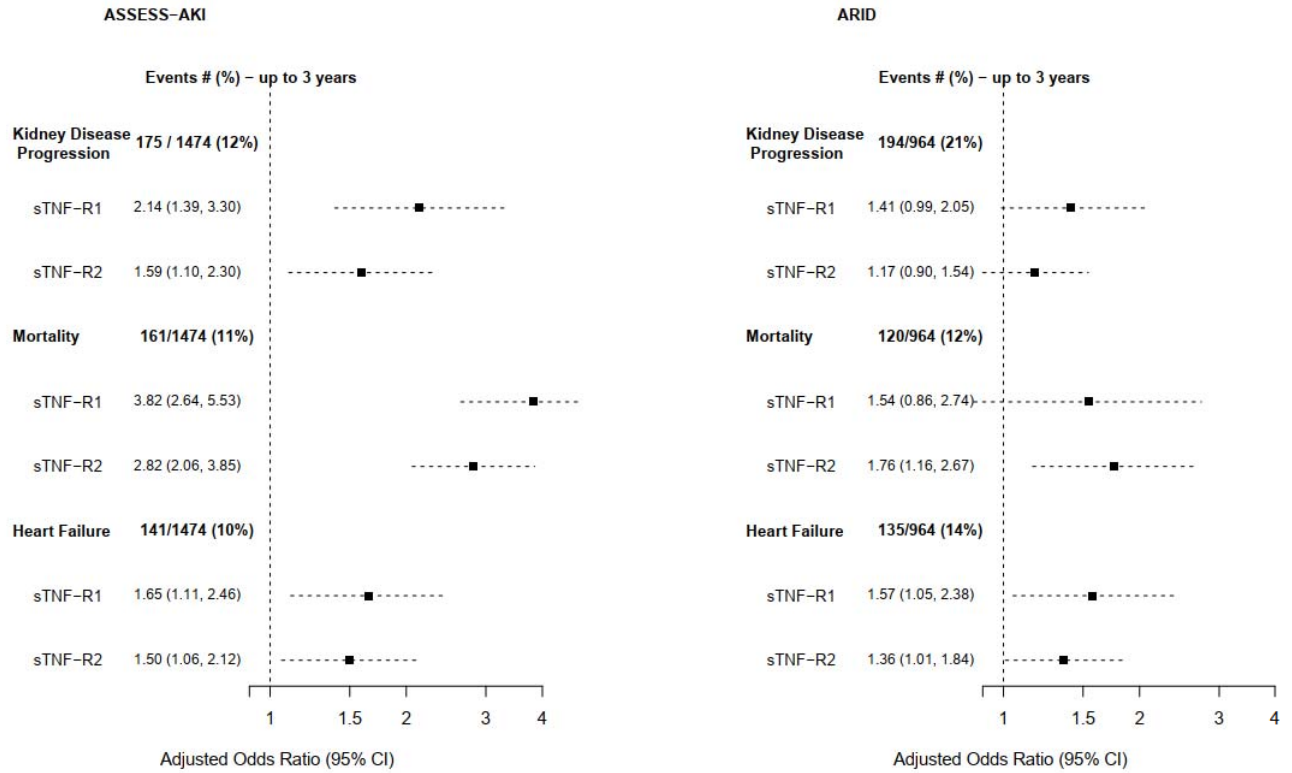
ASSESS-AKI



ARID



Supplementary Figure 3. Forest plot demonstrating the adjusted ORs and 95% CIs for sTNFR1 and sTNFR2 measured at 3 months with adverse clinical outcomes in ASSESS-AKI and ARID



Foot note: Odds ratios were adjusted for white race (yes/no), sex, age, smoking status, history of COPD, CRP, baseline CKD status (yes/no), AKI status, 3-month GFR, 3-month UACR