

1 Title: Patient trajectories among hospitalised COVID-19 patients vaccinated with an mRNA vaccine in  
2 Norway: a register-based cohort study

3 Robert Whittaker (MSc)<sup>a\*</sup>, Anja Bråthen Kristofferson (PhD)<sup>b</sup>, Beatriz Valcarcel Salamanca (PhD)<sup>b</sup>,  
4 Elina Seppälä (MD)<sup>a</sup>, Karan Golestani (MD)<sup>c</sup>, Reidar Kvåle (PhD)<sup>d, e</sup>, Sara Viksmoen Watle (MD)<sup>a</sup>, Eirik  
5 Alnes Buanes (PhD)<sup>d, f</sup>  
6 Family names are underlined.

7 a) Department of Infection Control and Vaccines, Norwegian Institute of Public Health, Oslo,  
8 Norway.

9 b) Department of Method Development and Analytics, Norwegian Institute of Public Health,  
10 Oslo, Norway.

11 c) Department of Infection Control and Preparedness, Norwegian Institute of Public Health,  
12 Oslo, Norway.

13 d) Department of Anaesthesia and Intensive Care, Haukeland University Hospital, Bergen,  
14 Norway.

15 e) Department of Clinical Medicine, University of Bergen, Bergen, Norway.

16 f) Norwegian Intensive Care and Pandemic Registry, Haukeland University Hospital, Bergen,  
17 Norway.

18 \* Corresponding author: Robert Whittaker, Norwegian Institute of Public Health, Lovisenberggata 8,  
19 0456, Oslo, Norway; Phone: +47 21 07 63 93; Email: [Robert.Whittaker@fhi.no](mailto:Robert.Whittaker@fhi.no)

## 20 **Abstract**

### 21 **Objectives**

22 With most of the Norwegian population vaccinated against COVID-19, an increasing number and  
23 proportion of COVID-19 related hospitalisations are occurring among vaccinated patients. To support  
24 patient management and capacity planning in hospitals, we estimated the length of stay (LoS) in  
25 hospital and odds of intensive care (ICU) admission and in-hospital mortality among COVID-19  
26 patients  $\geq 18$  years who had been vaccinated with an mRNA vaccine, compared to unvaccinated  
27 patients.

### 28 **Methods**

29 Using national registry data, we conducted a cohort study on SARS-CoV-2 positive patients  
30 hospitalised in Norway between 1 February and 30 September 2021, with COVID-19 as the main  
31 cause of hospitalisation. We used a Cox proportional hazards model to examine the association  
32 between vaccination status and LoS. We used logistic regression to examine the association between  
33 vaccination status and ICU admission and in-hospital mortality.

### 34 **Results**

35 We included 2,361 patients, including 70 (3%) partially vaccinated and 183 (8%) fully vaccinated. Fully  
36 vaccinated patients 18–79 years had a shorter LoS in hospital overall (adjusted hazard ratio for  
37 discharge: 1.35, 95%CI: 1.07–1.72), and lower odds of ICU admission (adjusted odds ratio: 0.57,  
38 95%CI: 0.33–0.96). Similar estimates were observed when collectively analysing partially and fully  
39 vaccinated patients. We observed no difference in the LoS for patients not admitted to ICU, nor odds  
40 of in-hospital death between vaccinated and unvaccinated patients.

## 41 **Conclusions**

42 Vaccinated patients hospitalised with COVID-19 in Norway have a shorter LoS and lower odds of ICU  
43 admission than unvaccinated patients. These findings can support patient management and ongoing  
44 capacity planning in hospitals.

45

46 Keywords: Norway; SARS-CoV-2; hospitalisation; length of stay; intensive care; mRNA vaccine;  
47 breakthrough infection

## 48 **Introduction**

49 Ongoing COVID-19 vaccination programmes have drastically reduced the burden of COVID-19 related  
50 hospitalisations and deaths (1-5). However, the risk of breakthrough cases of severe COVID-19 after  
51 vaccination remains, particularly among groups at higher risk of severe disease (6, 7).

52 Norway (population 5.4 million) started COVID-19 vaccination on 27 December 2020, initially  
53 focusing on individuals  $\geq 65$  years, health care workers and individuals at increased risk of severe  
54 COVID-19 (8). The mRNA vaccines Comirnaty and Spikevax are the two predominant vaccines  
55 administered (9). Vaccination coverage has steadily increased, with national one dose coverage  
56 among  $\geq 18$ -year-olds reaching 91% and two dose coverage 84% by the end of September 2021 (10).  
57 Persons with specific immunosuppressive conditions were first offered a third dose in early  
58 September 2021 (11). Booster doses have been offered to all persons  $\geq 65$  years and care home  
59 residents since early October 2021 (12).

60 With most of the Norwegian population vaccinated, an increasing number and proportion of COVID-  
61 19 related hospitalisations are occurring among vaccinated patients, characterised by advanced age  
62 and underlying comorbidities that put them at an increased risk of severe COVID-19 (8, 10). It is  
63 therefore essential to understand how vaccination may affect clinical endpoints among patients who  
64 are admitted to hospital for COVID-19 to support patient management and capacity planning in  
65 hospitals. Published data on this are currently limited (13, 14).

66 We linked individual-level data from national registries to estimate the length of stay (LoS) in hospital  
67 (with and without intensive care unit (ICU) stay), and odds of ICU admission and in-hospital mortality  
68 among COVID-19 patients  $\geq 18$  years in Norway who had been vaccinated with an mRNA vaccine,  
69 compared to unvaccinated patients.

## 70 **Methods**

## 71 **Patient cohort**

72 We conducted a cohort study, including patients  $\geq 18$  years hospitalised after a positive SARS-CoV-2  
73 test between 1 February and 30 September 2021, and who had a national identity number  
74 registered. We included patients hospitalised not more than two days before and less than 28 days  
75 following a positive SARS-CoV-2 test, where COVID-19 was reported as the main cause of admission.  
76 Cases hospitalised with other or unknown main cause of admission were excluded. We did not  
77 restrict admissions by LoS.

## 78 **Data sources**

79 We obtained data from the Norwegian national emergency preparedness registry for COVID-19 (15).  
80 The preparedness registry contains individual-level data covering all residents in Norway, and  
81 includes all laboratory-confirmed cases of COVID-19, all hospitalisations and ICU admissions among  
82 cases, and COVID-19 vaccinations. Further details on the data sources are presented in  
83 supplementary materials A, part 1. We extracted data from the preparedness registry on 22 October  
84 2021, ensuring a minimum of 21 days follow-up since last date of hospitalisation.

## 85 **Definition of COVID-19 vaccination status**

86 Vaccination status was defined based on the date of positive test for SARS-CoV-2:

- 87 1. Unvaccinated: Not vaccinated with a COVID-19 vaccine.
- 88 2. Partially vaccinated: Positive test  $\geq 21$  days after first dose and  $< 7$  days after second dose (if  
89 administered).
- 90 3. Fully vaccinated: Positive test  $\geq 7$  days after second dose with at least the absolute minimum  
91 interval between doses depending on the type of vaccine (16), or  $\geq 7$  days after first dose if  
92 previously diagnosed with a SARS-CoV-2 infection  $\geq 21$  days before vaccination.

93 We excluded patients vaccinated with one dose <21 days before positive test, patients vaccinated  
94 with a non-mRNA vaccine only and reported reinfections of SARS-CoV-2 among unvaccinated  
95 patients.

## 96 **Outcome measures**

97 We calculated the LoS in hospital (with and without ICU stay) as the time between first admission  
98 and last discharge. We did not calculate LoS in ICU separately, due to the small number of vaccinated  
99 patients admitted to ICU. For patients with more than one registered hospital stay, we included time  
100 between stays in the patient's LoS, if the time between two consecutive stays was <24 hours.  
101 Patients with unknown date of discharge from their last stay were considered to still be hospitalised.  
102 In-hospital mortality was registered at discharge.

## 103 **Data analysis**

104 Explanatory variables used to analyse differences in our outcomes were vaccination status, age, sex,  
105 county of residence, regional health authority, date of admission, country of birth, virus variant, and  
106 underlying risk factors.

107 To analyse differences in the LoS in hospital, we used a Cox proportional hazards model, with right  
108 censoring of patients still admitted to hospital at the end of the study period. Kaplan Meier curves  
109 were computed for each explanatory variable univariably, using survfit from the R-package survival.  
110 One minus the empirical cumulative negative binomial distribution function was fitted to each Kaplan  
111 Meier curve by minimising the sum of squared error, using the function optim in R. The function  
112 coxph from the R-package survival was used to compute the hazard ratio (HR) for discharge for each  
113 explanatory variable.

114 We used logistic regression to estimate the differences in 1) the proportion of patients admitted to  
115 ICU and 2) the proportion of patients who died. For the proportion of patients who died we only  
116 included patients who had been discharged.

117 We ran models for different age groups (18–64 years, 65–79 years, 18–79 years, ≥80 years and ≥18  
118 years) and vaccinated cohorts (fully vaccinated only or fully vaccinated and partially vaccinated  
119 together). Partially vaccinated patients were not analysed separately due to small numbers.  
120 Multivariable models were obtained by forward model selection and AIC comparison. Vaccination  
121 status was maintained in all models regardless of significance. AIC comparison was also used for  
122 determining whether age and date of admission were included linearly, with a spline or categorically.  
123 Adjusted HR (aHR) and odds-ratios (aOR) were reported.

124 We conducted sensitivity analyses by changing the definition of our study population, time period of  
125 analysis or our outcome definitions to further explore if our main results were robust (supplementary  
126 materials A, part 2).

## 127 **Ethics**

128 Ethical approval for this study was granted by Regional Committees for Medical Research Ethics -  
129 South East Norway, reference number 249509. The need for informed consent was waived by the  
130 ethics committee.

## 131 **Results**

### 132 **Description of cohort**

133 During the study period, 2,569 reported cases of COVID-19 were hospitalised with COVID-19 as the  
134 main cause of hospitalisation not more than two days before and less than 28 days after a positive  
135 SARS-CoV-2 test. Of these, 2,522 (98%) had a national identity number registered. We excluded 154

136 patients vaccinated with one dose <21 days before positive test, five patients vaccinated with non-  
137 mRNA vaccines, and one unvaccinated patient who was reported as having been reinfected with  
138 SARS-CoV-2. We also dropped one patient who had a reported stay in ICU outside of their hospital  
139 stay, due to assumed incomplete reporting on hospital stays.

140 The remaining 2,361 patients made up our study cohort. Of these, 421 (18%) had been admitted to  
141 ICU. At the end of the follow-up period 18 patients (0.8%) were still admitted to hospital. Of the  
142 2,343 patients who had been discharged, 107 died in hospital (4.6%).

143 Seventy patients (3.0%) were partially vaccinated and 183 (7.8%) fully vaccinated. Most patients  
144 received Comirnaty (84% among partially vaccinated, 93% among fully vaccinated). A breakdown of  
145 vaccine types is presented in supplementary materials A, part 3, including time between doses for  
146 fully vaccinated patients. The median time from last dose to diagnosis was 44 days (interquartile  
147 range (IQR): 30–54) for partially vaccinated and 126 days (IQR: 90–186) for fully vaccinated. Age and  
148 the frequency of certain underlying risk factors such as cancer, chronic lung disease, heart disease,  
149 immunocompromised (due to illness or treatment) and kidney disease increased from unvaccinated  
150 to partially vaccinated to fully vaccinated patients. Detailed characteristics of the study cohort by  
151 vaccination status are presented in Table 1.

## 152 **Length of stay in hospital, and odds of admission to intensive care** 153 **and in-hospital death by vaccination status**

154 After adjusting for all explanatory variables, results suggested that fully vaccinated patients aged  $\geq 18$   
155 years had a shorter LoS in hospital overall (aHR for discharge: 1.40, 95%CI: 1.14–1.71) (Fig 1, Table 2),  
156 and lower odds of ICU admission (aOR: 0.60, 95%CI: 0.39–0.91) compared to unvaccinated patients  
157 (Fig 1, Table 3). This was driven by the age group 18–79 years (aHR for discharge: 1.35, 95%CI: 1.07–  
158 1.72; aOR for ICU admission: 0.57, 95%CI: 0.33–0.96). When the analysis was restricted to only  
159 patients not admitted to ICU, we did not observe a difference in the LoS for fully vaccinated patients,



160 compared to unvaccinated patients. Similar estimates were observed when collectively comparing  
161 partially and fully vaccinated patients to unvaccinated patients (Table 2, Table 3). Estimates for  
162 patients 18–64 and 65–79 years tended in the same direction as patients 18–79 years, but statistical  
163 significance in adjusted models was only observed for the LoS in hospital (18–64) and odds of ICU  
164 admission (65–79) when including partially vaccinated patients. Among patients ≥80 years, adjusted  
165 estimates tended towards a shorter LoS, but for all outcomes results were not statistically significant  
166 (Table 2, Table 3). There was no difference in the adjusted odds of in-hospital death between  
167 vaccinated and unvaccinated patients in any age group (Table 3). Our results were robust in  
168 sensitivity analyses, although one notable difference was fully vaccinated patients ≥80 years having  
169 lower odds of in-hospital death (aOR: 0.24, 95%CI: 0.09–0.56) when including all SARS-CoV-2 positive  
170 patients, regardless of main cause of hospitalisation (supplementary materials A, part 2).

171 Estimates from all univariable and multivariable models are presented in supplementary materials B,  
172 C and D.

## 173 Discussion

174 In this national register-based study, we have analysed individual-level data on 2,361 hospitalised  
175 COVID-19 patients, during a period when mRNA vaccines were the predominant vaccines  
176 administered using a two-dose schedule. In line with other reports (7, 13, 14, 17), vaccinated patients  
177 were generally older and had a higher prevalence of underlying risk factors than unvaccinated  
178 patients.

179 Our results suggest that COVID-19 patients aged 18–79 years in Norway who had been vaccinated  
180 with an mRNA vaccine had 43% lower odds of ICU admission and a shorter LoS in hospital than  
181 unvaccinated patients. Assuming exponential distribution of the survival data, an aHR for discharge  
182 of 1.35 translates into an average 26% decrease in LoS for fully vaccinated patients ( $1 - 1/1.35$ ) (18).  
183 We did not observe a statistically significant difference in the LoS for vaccinated patients not

184 admitted to ICU. Estimates for this parameter may have been affected by vaccinated patients who  
185 would have ended up in ICU if unvaccinated instead spending more time in regular hospital wards,  
186 although point estimates tended towards a shorter LoS among vaccinated patients in some age  
187 groups, with one sensitivity analysis including partially and fully vaccinated patients 18–79 years  
188 statistically significant. Results for patients 18–64 and 65–79 years, as well as LoS for patients ≥80  
189 years tended in the same direction, but may have been limited by small sample sizes. Vaccination did  
190 not reduce the odds of in-hospital death. The exception was patients ≥80 years in a sensitivity  
191 analysis including all SARS-CoV-2 positive patients, regardless of main cause of hospitalisation. For  
192 unvaccinated patients with another main cause of hospitalisation, COVID-19 may have been a more  
193 significant contributing factor for admission, while frail elderly patients with multiple comorbidities  
194 may be more likely to be unvaccinated.

195 Our results suggest that once hospitalised the risk of death among vaccinated and unvaccinated  
196 patients in Norway is similar. However, for survivors the disease trajectory is milder in vaccinated  
197 patients, with reduced need for hospital care and organ support. With vaccination coverage steadily  
198 increasing around the world, these findings have important implications for patient management and  
199 ongoing capacity planning in hospitals. A study including 142 patients fully vaccinated with an mRNA  
200 vaccine from 21 sites across the United States also reported a shorter LoS, lower odds of death or  
201 invasive mechanical ventilation and a lower level of clinical disease severity among vaccinated  
202 patients (13). In contrast, a study from Michigan, United States did not find lower odds of ICU  
203 admission, mechanical ventilation or death when comparing 825 partially vaccinated or 129 fully  
204 vaccinated patients (vaccinated with Comirnaty, Spikevax or Janssen) to unvaccinated patients (14).  
205 Differences in the study cohorts, setting and design need to be considered, and there is a clear need  
206 for more research from a range of different settings to further explore and build on the observed  
207 findings, particularly as vaccination programmes continue to evolve. While studies have suggested  
208 sustained high effectiveness of mRNA vaccines against hospitalisation at least six months following  
209 vaccination (19, 20), the duration of protection following the original two-dose schedules for mRNA

210 vaccines and the effects of booster doses beyond the original schedules (12, 21-23) require ongoing  
211 research.

212 Our results highlight that other factors continue to influence patient outcomes despite vaccination,  
213 with a longer LoS and/or increased odds of ICU admission or death associated with advanced age,  
214 male sex and certain risk factors such as immunosuppression, kidney disease, obesity, diabetes and  
215 heart disease, as reported by others (24-27).

216 A strength of our study is that all data sources had national coverage. Also, hospitals in Norway  
217 functioned within capacity during the study period, while criteria for hospitalisation and isolation  
218 were consistent and not related to vaccination status. Although we did not have access to treatment  
219 data, there were no major changes in treatment guidelines for COVID-19 patients in hospital or ICU  
220 during the study period in Norway. We also had minimal censoring of the study cohort, with 0.8% of  
221 patients still admitted to hospital at the end of follow-up.

222 Our study also has limitations. While we have controlled for several important confounders, the  
223 potential for residual confounding must be acknowledged, given the observational nature of the  
224 study. Also, the small number of vaccinated patients in some analyses must be considered, and we  
225 were not yet able to conduct more detailed analyses of different vaccine parameters, such as vaccine  
226 type, time since vaccination and dose intervals. However, our results were robust when we restricted  
227 our analysis to vaccinated patients with no more than 150 days between date of last dose and  
228 positive test. Another limitation is that some of our reported underlying risk factors do not  
229 distinguish potential differences within groups, for example whether risk factors are well-regulated  
230 or treated. Also, 38% of patients had unknown body mass index. Our model may therefore not fully  
231 adjust for certain underlying risk factors. We were also not able to adjust for care home residents,  
232 who may receive healthcare for severe COVID-19 partially or fully outside a hospital setting. This is  
233 particularly relevant for our cohort of patients  $\geq 80$  years. Finally, previous natural infection is  
234 associated with a high level of protection against SARS-CoV-2 reinfection (28, 29), and while we

235 dropped one reported reinfection, we cannot rule out that there were other previously undiagnosed  
236 SARS-CoV-2 infections in our unvaccinated cohort. If present, this would bias the association  
237 between vaccination and our outcomes towards the null.

238 Our study suggests that mRNA vaccinated patients hospitalised with COVID-19 in Norway have a  
239 shorter LoS and lower odds of ICU admission than unvaccinated patients. These findings can support  
240 patient management and ongoing capacity planning in hospitals and underline the importance of  
241 vaccination programmes against COVID-19.

## 242 **Transparency declaration**

## 243 **Authors' contributions**

244 RW, ABK, BVS, ES, RK and EAB conceived the idea for the study. RW drafted the study protocol and  
245 coordinated the study. RK and EAB contributed directly to the acquisition of data. RW and ABK  
246 contributed to data cleaning, validation and preparation. RW and ABK led the data analysis. All co-  
247 authors contributed to the interpretation of the results. RW and ABK drafted the manuscript. All co-  
248 authors contributed to the revision of the manuscript and approved the final version for submission.

## 249 **Conflict of interest**

250 The authors declare that they have no competing interests.

## 251 **Funding**

252 The authors received no specific funding for this work.

## 253 **Acknowledgements**

254 First and foremost, we wish to thank all those who have helped establish, coordinate and report data  
255 to the national emergency preparedness registry at the Norwegian Institute of Public Health (NIPH)  
256 throughout the pandemic. We also highly acknowledge the efforts of staff at hospitals around  
257 Norway to ensure the reporting of timely and complete data to the Norwegian Intensive Care and  
258 Pandemic Registry, as well as colleagues at the register itself. We would like to specifically thank  
259 Trude Marie Lyngstad, Jostein Starrfelt, Håkon Bøås and Lamprini Veneti at the NIPH for their  
260 assistance in cleaning the data from different registries.

## 261 **Access to data**

262 The dataset analysed in the study contains individual-level linked data from various central health  
263 registries, national clinical registries and other national administrative registries in Norway. The  
264 researchers had access to the data through the national emergency preparedness registry for COVID-  
265 19 (Beredt C19), housed at the Norwegian Institute of Public Health (NIPH). In Beredt C19, only fully  
266 anonymised data (i.e. data that are neither directly nor potentially indirectly identifiable) are  
267 permitted to be shared publicly. Legal restrictions therefore prevent the researchers from publicly  
268 sharing the dataset used in the study that would enable others to replicate the study findings.  
269 However, external researchers are freely able to request access to linked data from the same  
270 registries from outside the structure of Beredt C19, as per normal procedure for conducting health  
271 research on registry data in Norway. Further information on Beredt C19, including contact  
272 information for the Beredt C19 project manager, and information on access to data from each  
273 individual data source, is available at [https://www.fhi.no/en/id/infectious-](https://www.fhi.no/en/id/infectious-diseases/coronavirus/emergency-preparedness-register-for-covid-19/)  
274 [diseases/coronavirus/emergency-preparedness-register-for-covid-19/](https://www.fhi.no/en/id/infectious-diseases/coronavirus/emergency-preparedness-register-for-covid-19/).

## 275 **References**

- 276 1. Lopez Bernal J, Andrews N, Gower C, Gallagher E, Simmons R, Thelwall S, et al. Effectiveness  
277 of Covid-19 Vaccines against the B.1.617.2 (Delta) Variant. *N Engl J Med.* 2021;385(7):585-94.
- 278 2. Vasileiou E, Simpson CR, Shi T, Kerr S, Agrawal U, Akbari A, et al. Interim findings from first-  
279 dose mass COVID-19 vaccination roll-out and COVID-19 hospital admissions in Scotland: a national  
280 prospective cohort study. *Lancet.* 2021;397(10285):1646-57.
- 281 3. Tenforde MW, Patel MM, Ginde AA, Douin DJ, Talbot HK, Casey JD, et al. Effectiveness of  
282 SARS-CoV-2 mRNA Vaccines for Preventing Covid-19 Hospitalizations in the United States. *Clin Infect*  
283 *Dis.* 2021.
- 284 4. Haas EJ, Angulo FJ, McLaughlin JM, Anis E, Singer SR, Khan F, et al. Impact and effectiveness  
285 of mRNA BNT162b2 vaccine against SARS-CoV-2 infections and COVID-19 cases, hospitalisations, and  
286 deaths following a nationwide vaccination campaign in Israel: an observational study using national  
287 surveillance data. *Lancet.* 2021;397(10287):1819-29.
- 288 5. Glatman-Freedman A, Bromberg M, Dichtiar R, Hershkovitz Y, Keinan-Boker L. The BNT162b2  
289 vaccine effectiveness against new COVID-19 cases and complications of breakthrough cases: A  
290 nation-wide retrospective longitudinal multiple cohort analysis using individualised data.  
291 *EBioMedicine.* 2021;72:103574.
- 292 6. Hippisley-Cox J, Coupland CA, Mehta N, Keogh RH, Diaz-Ordaz K, Khunti K, et al. Risk  
293 prediction of covid-19 related death and hospital admission in adults after covid-19 vaccination:  
294 national prospective cohort study. *BMJ.* 2021;374:n2244.
- 295 7. Brosh-Nissimov T, Orenbuch-Harroch E, Chowers M, Elbaz M, Neshet L, Stein M, et al.  
296 BNT162b2 vaccine breakthrough: clinical characteristics of 152 fully vaccinated hospitalized COVID-  
297 19 patients in Israel. *Clin Microbiol Infect.* 2021.

- 298 8. Norwegian Institute of Public Health. Who will get the coronavirus vaccine? 2021 [cited 2021  
299 Nov 4]. Available from: [https://www.fhi.no/en/id/vaccines/coronavirus-immunisation-  
300 programme/who-will-get-coronavirus-vaccine-first/](https://www.fhi.no/en/id/vaccines/coronavirus-immunisation-programme/who-will-get-coronavirus-vaccine-first/)
- 301 9. Norwegian Institute of Public Health. Coronavirus vaccine - information for the public. 2021  
302 [cited 2021 Nov 4]. Available from: [https://www.fhi.no/en/id/vaccines/coronavirus-immunisation-  
303 programme/who-will-get-coronavirus-vaccine-first/](https://www.fhi.no/en/id/vaccines/coronavirus-immunisation-programme/who-will-get-coronavirus-vaccine-first/)
- 304 10. Norwegian Institute of Public Health. Ukerapporter om koronavirus og covid-19. Oslo:  
305 Norwegian Institute of Public Health. 2021 [cited 2021 Nov 4]. Available from:  
306 <https://www.fhi.no/publ/2020/koronavirus-ukerapporter/>
- 307 11. Norwegian Institute of Public Health. Personer med nedsatt immunforsvar anbefales en  
308 tredje vaksinedose. Oslo: Norwegian Institute of Public Health. 2021 [cited 2021 Nov 4]. Available  
309 from: [https://www.fhi.no/nyheter/2021/personer-med-nedsatt-im  
310 munforsvar-anbefales-en-tredje-  
vaksinedose/](https://www.fhi.no/nyheter/2021/personer-med-nedsatt-immunforsvar-anbefales-en-tredje-vaksinedose/)
- 311 12. Norwegian Institute of Public Health. Oppfriskningsdose til eldre og sykehjemsbeboere. 2021  
312 [cited 2021 Nov 4]. Available from: [https://www.fhi.no/nyheter/2021/personer-med-nedsatt-  
313 immunforsvar-anbefales-en-tredje-vaksinedose/](https://www.fhi.no/nyheter/2021/personer-med-nedsatt-immunforsvar-anbefales-en-tredje-vaksinedose/)
- 314 13. Tenforde MW, Self WH, Adams K, Gaglani M, Ginde AA, McNeal T, Ghamande S, et al.  
315 Association Between mRNA Vaccination and COVID-19 Hospitalization and Disease Severity. JAMA.  
316 2021. doi: 10.1001/jama.2021.19499.
- 317 14. Bahl A, Johnson S, Maine G, Garcia MH, Nimmagadda S, Qu L, et al. Vaccination reduces need  
318 for emergency care in breakthrough COVID-19 infections: A multicenter cohort study. Lancet Reg  
319 Health Am. 2021:100065.



- 320 15. Norwegian Institute of Public Health. Emergency preparedness register for COVID-19 (Beredt  
321 C19). 2021 [cited 2021 Nov 4]. Available from: [https://www.fhi.no/en/id/infectious-](https://www.fhi.no/en/id/infectious-diseases/coronavirus/emergency-preparedness-register-for-covid-19/)  
322 [diseases/coronavirus/emergency-preparedness-register-for-covid-19/](https://www.fhi.no/en/id/infectious-diseases/coronavirus/emergency-preparedness-register-for-covid-19/)
- 323 16. Norwegian Institute of Public Health. Vanlige problemstillinger om koronasertifikat. 2021  
324 [cited 2021 Nov 4]. Available from: [https://www.fhi.no/en/id/infectious-](https://www.fhi.no/en/id/infectious-diseases/coronavirus/emergency-preparedness-register-for-covid-19/)  
325 [diseases/coronavirus/emergency-preparedness-register-for-covid-19/](https://www.fhi.no/en/id/infectious-diseases/coronavirus/emergency-preparedness-register-for-covid-19/)
- 326 17. Agrawal U, Katikireddi SV, McCowan C, Mulholland RH, Azcoaga-Lorenzo A, Amele S, et al.  
327 COVID-19 hospital admissions and deaths after BNT162b2 and ChAdOx1 nCoV-19 vaccinations in 2.57  
328 million people in Scotland (EAVE II): a prospective cohort study. *Lancet Respir Med*. 2021.
- 329 18. Barraclough H, Simms L, Govindan R. Biostatistics primer: what a clinician ought to know:  
330 hazard ratios. *J Thorac Oncol*. 2011;6(6):978-82.
- 331 19. Chemaitelly H, Yassine HM, Benslimane FM, Al Khatib HA, Tang P, Hasan MR, et al. mRNA-  
332 1273 COVID-19 vaccine effectiveness against the B.1.1.7 and B.1.351 variants and severe COVID-19  
333 disease in Qatar. *Nat Med*. 2021;27(9):1614-21.
- 334 20. Tartof SY, Slezak JM, Fischer H, Hong V, Ackerson BK, Ranasinghe ON, et al. Effectiveness of  
335 mRNA BNT162b2 COVID-19 vaccine up to 6 months in a large integrated health system in the USA: a  
336 retrospective cohort study. *Lancet*. 2021;398(10309):1407-16.
- 337 21. Danish Health Authority. Vedr. revaccination mod COVID-19. 2021 [cited 2021 Nov 4].  
338 Available from: [https://www.sst.dk/-](https://www.sst.dk/-/media/Udgivelser/2021/Corona/Vaccination/Revaccination/Vedr-revaccination-mod-COVID-19-280921.ashx?la=da&hash=8F220749B81743A9CC35C3715CB1409CCF26FB5C)  
339 [/media/Udgivelser/2021/Corona/Vaccination/Revaccination/Vedr-revaccination-mod-COVID-19-](https://www.sst.dk/-/media/Udgivelser/2021/Corona/Vaccination/Revaccination/Vedr-revaccination-mod-COVID-19-280921.ashx?la=da&hash=8F220749B81743A9CC35C3715CB1409CCF26FB5C)  
340 [280921.ashx?la=da&hash=8F220749B81743A9CC35C3715CB1409CCF26FB5C](https://www.sst.dk/-/media/Udgivelser/2021/Corona/Vaccination/Revaccination/Vedr-revaccination-mod-COVID-19-280921.ashx?la=da&hash=8F220749B81743A9CC35C3715CB1409CCF26FB5C)

- 341 22. Public Health England. COVID-19 vaccination: a guide to booster vaccination. 2021 [cited  
342 2021 Nov 4]. Available from: [https://www.gov.uk/government/publications/covid-19-vaccination-](https://www.gov.uk/government/publications/covid-19-vaccination-booster-dose-resources/covid-19-vaccination-a-guide-to-booster-vaccination)  
343 [booster-dose-resources/covid-19-vaccination-a-guide-to-booster-vaccination](https://www.gov.uk/government/publications/covid-19-vaccination-a-guide-to-booster-vaccination).
- 344 23. Bar-On YM, Goldberg Y, Mandel M, Bodenheimer O, Freedman L, Kalkstein N, et al.  
345 Protection of BNT162b2 Vaccine Booster against Covid-19 in Israel. *N Engl J Med*. 2021.
- 346 24. Suarez-Garcia I, Perales-Fraile I, Gonzalez-Garcia A, Munoz-Blanco A, Manzano L, Fabregate  
347 M, et al. In-hospital mortality among immunosuppressed patients with COVID-19: Analysis from a  
348 national cohort in Spain. *PLoS One*. 2021;16(8):e0255524.
- 349 25. Boelle PY, Delory T, Maynadier X, Janssen C, Piarroux R, Pichenot M, et al. Trajectories of  
350 Hospitalization in COVID-19 Patients: An Observational Study in France. *J Clin Med*. 2020;9(10).
- 351 26. Petrilli CM, Jones SA, Yang J, Rajagopalan H, O'Donnell L, Chernyak Y, et al. Factors associated  
352 with hospital admission and critical illness among 5279 people with coronavirus disease 2019 in New  
353 York City: prospective cohort study. *BMJ*. 2020;369:m1966.
- 354 27. Sjogren L, Stenberg E, Thuccani M, Martikainen J, Rylander C, Wallenius V, et al. Impact of  
355 obesity on intensive care outcomes in patients with COVID-19 in Sweden-A cohort study. *PLoS One*.  
356 2021;16(10):e0257891.
- 357 28. Hall VJ, Foulkes S, Saei A, Andrews N, Oguti B, Charlett A, et al. COVID-19 vaccine coverage in  
358 health-care workers in England and effectiveness of BNT162b2 mRNA vaccine against infection  
359 (SIREN): a prospective, multicentre, cohort study. *Lancet*. 2021;397(10286):1725-35.
- 360 29. Hansen CH, Michlmayr D, Gubbels SM, Molbak K, Ethelberg S. Assessment of protection  
361 against reinfection with SARS-CoV-2 among 4 million PCR-tested individuals in Denmark in 2020: a  
362 population-level observational study. *Lancet*. 2021;397(10280):1204-12.

## 363 Tables and figures

364 *Table 1. Characteristics of SARS-CoV-2 positive patients aged ≥18 years hospitalised with COVID-19 as*  
 365 *the main cause of hospitalisation, by vaccination status, Norway, 1 February – 30 September 2021*

Characteristics		Vaccination status		
		Unvaccinated (n=2,108)	Partially vaccinated (n=70)	Fully vaccinated (n=183)
Sex	Male	1274 (60.4%)	34 (48.6%)	108 (59.0%)
	Female	834 (39.6%)	36 (51.4%)	75 (41.0%)
			<b>p = 0.046</b>	<b>p = 0.706</b>
Age group	18-29 years	134 (6.4%)	9 (12.9%)	1 (0.5%)
	30-44 years	525 (24.9%)	10 (14.3%)	11 (6.0%)
	45-54 years	572 (27.1%)	14 (20.0%)	19 (10.4%)
	55-64 years	447 (21.2%)	10 (14.3%)	19 (10.4%)
	65-79 years	379 (18.0%)	23 (32.9%)	59 (32.2%)
	≥80 years	51 (2.4%)	4 (5.7%)	74 (40.4%)
			<b>p = 0.001</b>	<b>p &lt; 0.001</b>
Median age	In years (IQR)	51 (41–61)	57,5 (44–72)	77 (61–83)
			<b>p = 0.020</b>	<b>p = &lt;0.001</b>
Born in Norway	Yes, with at least one parent born in Norway	871 (41.3%)	33 (47.1%)	129 (70.5%)
	Yes, two parents born outside of Norway	51 (2.4%)	2 (2.9%)	2 (1.1%)
	No	1129 (53.6%)	28 (40.0%)	39 (21.3%)

	Unknown	57 (2.7%)	7 (10.0%)	13 (7.1%)
			p = 0.002	p < 0.001
Underlying risk factors	Asthma	243 (11.5%)	4 (5.7%)	16 (8.7%)
	Cancer <sup>a</sup>	58 (2.8%)	6 (8.6%)	23 (12.6%)
	Chronic lung disease, excluding asthma	112 (5.3%)	8 (11.4%)	36 (19.7%)
	Chronic neurological or neuromuscular disease	76 (3.6%)	5 (7.1%)	16 (8.7%)
	Diabetes (type 1 and 2)	304 (14.4%)	8 (11.4%)	44 (24.0%)
	Heart disease, including hypertension	575 (27.3%)	31 (44.3%)	111 (60.7%)
	Immunocompromised, including HIV and immunosuppressive treatment <sup>b</sup>	55 (2.6%)	6 (8.6%)	31 (16.9%)
	Kidney disease, including kidney failure	60 (2.8%)	7 (10.0%)	34 (18.6%)
	Liver disease, including liver failure	19 (0.9%)	2 (2.9%)	4 (2.2%)
	BMI ≥30 <sup>c</sup>	502 (23.8%)	15 (21.4%)	23 (12.6%)
	Pregnant	48 (2.3%)	0 (0.0%)	1 (0.5%)
	Current smoker	89 (4.2%)	6 (8.6%)	7 (3.8%)
			p = 0.629	p < 0.001
Virus variant	Alpha	1034 (49.1%)	17 (24.3%)	12 (6.6%)
	Beta	22 (1.0%)	0 (0.0%)	1 (0.5%)
	Delta	186 (8.8%)	32 (45.7%)	78 (42.6%)

	Non-VOC	41 (1.9%)	2 (2.9%)	7 (3.8%)
	Uncategorised <sup>d</sup>	58 (2.8%)	0 (0.0%)	2 (1.1%)
	Unknown	767 (36.4%)	19 (27.1%)	83 (45.4%)
			<b>p &lt; 0.001</b>	<b>p &lt; 0.001</b>
Month of admission	February	197 (9.3%)	0 (0.0%)	0 (0.0%)
	March	733 (34.8%)	4 (5.7%)	6 (3.3%)
	April	559 (26.5%)	5 (7.1%)	9 (4.9%)
	May	201 (9.5%)	10 (14.3%)	3 (1.6%)
	June	96 (4.6%)	7 (10.0%)	4 (2.2%)
	July	48 (2.3%)	2 (2.9%)	11 (6.0%)
	August	113 (5.4%)	28 (40.0%)	44 (24.0%)
	September	161 (7.6%)	14 (20.0%)	106 (57.9%)
				<b>p &lt; 0.001</b>
Regional health authority	South-East	1705 (80.9%)	45 (64.3%)	132 (72.1%)
	West	230 (10.9%)	13 (18.6%)	16 (8.7%)
	Mid	98 (4.6%)	9 (12.9%)	24 (13.1%)
	North	75 (3.6%)	3 (4.3%)	11 (6.0%)
			<b>p = 0.002</b>	<b>p &lt; 0.001</b>
Admission to ICU	No	1720 (81.6%)	62 (88.6%)	158 (86.3%)
	Yes	388 (18.4%)	8 (11.4%)	25 (13.7%)
			<b>p = 0.136</b>	<b>p = 0.109</b>
Mortality <sup>e</sup>	Died in ICU	52 (2.5%)	2 (2.9%)	12 (6.7%)
	Died in hospital, not in ICU	26 (1.2%)	5 (7.3%)	10 (5.6%)

	Alive at discharge	2017 (96.3%)	62 (89.9%)	157 (87.7%)
			p < 0.001	p < 0.001
Number of patients	In ICU	6 (0.3%)	0 (0.0%)	2 (1.1%)
	still in hospital at end			
of follow-up (21	In hospital, not in ICU	7 (0.3%)	1 (1.4%)	2 (1.1%)
October 2021)	Discharged from hospital	2095 (99.4%)	69 (98.6%)	179 (97.8%)
			p = 0.298	p = 0.059

366 IQR: interquartile range; VOC: Variant of concern; ICU: Intensive care unit; BMI: Body mass index. P values compared to unvaccinated

367 calculated using chi-squared tests or Wilcoxon rank sum tests as appropriate. P values for underlying risk factors based on proportion

368 having any one of the listed risk factors.

369 <sup>a</sup> Refers to cancer patients undergoing treatment or with regular controls (>1 per year).

370 <sup>b</sup> Includes ongoing use of steroids in doses equivalent to at least 5mg Prednisolone daily.

371 <sup>c</sup> In our dataset, 898 patients (38%) had unknown information on height and weight, and thus unknown data on BMI. Of these 898, 801

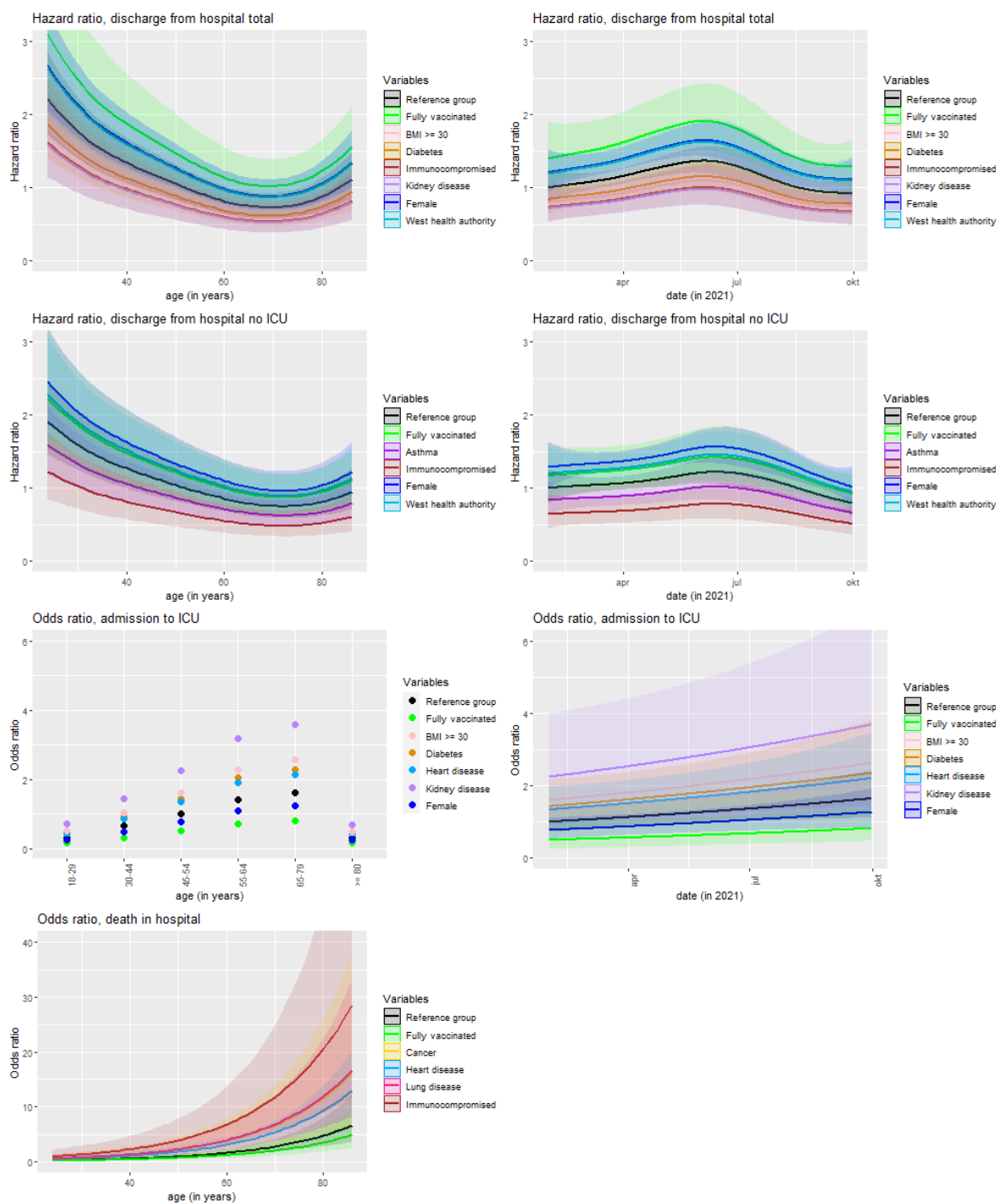
372 were unvaccinated (38% of all unvaccinated), 28 partially vaccinated (40%) and 69 fully vaccinated (38%). In our models, BMI was therefore

373 included as a three-level categorical variable, yes, no and unknown.

374 <sup>d</sup> Cases for which VOC and non-VOC could not clearly be distinguished based on the available information.

375 <sup>e</sup> Excludes patients still in hospital at end of follow-up.

376 *Figure 1. Adjusted hazard ratios for discharge from hospital (with and without stay in intensive care),*  
 377 *and adjusted odds ratios for admission to intensive care and in-hospital mortality, SARS-CoV-2*  
 378 *positive patients aged ≥18 years hospitalised with COVID-19 as the main cause of hospitalisation, by*  
 379 *age or date of admission, Norway, 1 February – 30 September 2021*



380

381 ICU: Intensive care unit. The reference group with a hazard ratio or odds ratio = 1 is patients who are male, aged 52 years (median age in  
382 dataset) or age group 45–54 years, born in Norway with at least one parent born in Norway, without underlying risk factors, unvaccinated  
383 and admitted to hospital on 1 February 2021. Hazard ratios were calculated using a Cox proportional hazards model, and odds ratios using  
384 logistic regression. The variables shown in each panel are those significantly associated with each outcome in multivariable models (see  
385 supplementary materials D). AIC comparison was used for determining whether age and date of admission were included linearly, with a  
386 spline or categorically. No panel for death in hospital by date of admission is shown, as date of admission was not associated death in  
387 hospital in our multivariable model (see supplementary materials D).



388 *Table 2. Length of stay in hospital and crude and adjusted hazard ratios for discharge from hospital (with and without stay in intensive care) from a Cox*  
 389 *proportional hazards model, SARS-CoV-2 positive patients aged ≥18 years hospitalised with COVID-19 as the main cause of hospitalisation, by vaccination*  
 390 *status and age group, Norway, 1 February – 30 September 2021*

Age group	Outcome	Vaccination status									
		Unvaccinated		Fully vaccinated				Partially and fully vaccinated			
		Number of patients	Median (IQR) <sup>a</sup>	Number of patients	Median (IQR) <sup>a</sup>	Crude hazard ratio for discharge compared to unvaccinated (95%CI)	Adjusted <sup>b</sup> hazard ratio for discharge compared to unvaccinated (95%CI)	Number of patients	Median (IQR) <sup>a</sup>	Crude hazard ratio for discharge compared to unvaccinated (95%CI)	Adjusted <sup>b</sup> hazard ratio for discharge compared to unvaccinated (95%CI)
18–64 years	Days in hospital including patients admitted to ICU	1678	4.7 (2.5–8.5)	50	4.0 (2.7–11.2)	0.832 (0.624–1.109)	1.217 (0.879–1.686)	93	3.7 (1.6–7.1)	1.095 (0.885–1.354)	1.337 (1.075–1.757)
	Days in hospital for patients not admitted to ICU	1401	3.9 (2.0–6.4)	40	3.8 (2.1–6.8)	0.880 (0.642–1.206)	0.987 (0.714–1.365)	80	2.8 (1.5–5.6)	1.118 (0.890–1.403)	0.717 (0.360–1.322)
65–79 years	Days in hospital including patients admitted to ICU	379	7.1 (3.8–14.6)	59	6.9 (3.6–12.8)	1.159 (0.875–1.534)	1.241 (0.932–1.652)	82	7.0 (3.8–14.1)	1.059 (0.832–1.350)	1.117 (0.877–1.437)
	Days in hospital for patients not admitted to ICU	271	4.9 (2.9–8.3)	49	5.7 (3.0–9.5)	0.846 (0.622–1.151)	1.315 (0.863–2.003)	68	5.8 (3.2–9.6)	0.780 (0.596–1.022)	1.117 (0.801–1.629)
18–79 years	Days in hospital including patients admitted to ICU	2057	5.0 (2.6–9.2)	109	6.0 (3.0–11.9)	0.845 (0.694–1.028)	<b>1.353</b> ( <b>1.067–1.715</b> )	175	5.0 (2.1–10.5)	0.935 (0.799–1.093)	<b>1.377</b> ( <b>1.145–1.657</b> )
	Days in hospital for patients not admitted to ICU	1672	4.0 (2.1–6.7)	89	4.6 (2.8–8.9)	<b>0.733</b> ( <b>0.591–0.909</b> )	0.831 (0.651–1.061)	148	4.0 (2.0–7.7)	<b>0.802</b> ( <b>0.676–0.951</b> )	1.122 (0.917–1.373)
≥80 years	Days in hospital including	51	5.7	74	3.5	1.283	1.174	78	3.8	1.232	1.139

	patients admitted to ICU		(2.9–8.0)		(1.9–8.3)	(0.894–1.842)	(0.809–1.705)		(1.9–8.5)	(0.861–1.763)	(0.787–1.650)
	Days in hospital for patients not admitted to ICU	48	5.2 (2.8–7.4)	69	3.2 (1.8–6.9)	1.200 (0.827–1.741)	1.184 (0.812–1.725)	72	3.4 (1.8–7.1)	1.163 (0.805–1.681)	1.115 (0.765–1.624)
≥18 years	Days in hospital including patients admitted to ICU	2108	5.0 (2.6–9.2)	183	4.9 (2.6–9.8)	1.007 (0.865–1.174)	<b>1.398</b> <b>(1.139–1.717)</b>	253	4.6 (2.1–9.6)	1.030 (0.903–1.175)	<b>1.307</b> <b>(1.100–1.551)</b>
	Days in hospital for patients not admitted to ICU	1720	4.0 (2.1–6.7)	158	4.0 (2.1–8.1)	<b>0.840</b> <b>(0.713–0.990)</b>	1.168 (0.938–1.453)	220	3.9 (1.9–7.4)	<b>0.859</b> <b>(0.745–0.990)</b>	1.129 (0.937–1.330)

391 ICU: Intensive care unit; IQR: Interquartile range; 95%CI: 95% confidence interval. Bold text = statistically significant results.

392 <sup>a</sup> 13 unvaccinated, 1 partially vaccinated and 4 fully vaccinated patients were still admitted to hospital at the end of the follow-up period. These patients are included in the calculated medians and IQR, and adjusted  
393 for in the Cox proportional hazards model using right censoring.

394 <sup>b</sup> Adjusted for age, sex, county of residence, regional health authority, date of admission, country of birth, virus variant and underlying risk factors. The variables included in the final multivariable model were  
395 obtained by forward model selection and AIC comparison (see supplementary materials D).

396 *Table 3. Crude and adjusted odds ratios for admission to intensive care and in-hospital mortality from logistic regression, SARS-CoV-2 positive patients aged*  
 397 *≥18 years hospitalised with COVID-19 as the main cause of hospitalisation, by vaccination status and age group, Norway, 1 February – 30 September 2021*

Age group	Outcome	Vaccination status									
		Unvaccinated		Fully vaccinated				Partially and fully vaccinated			
		No (%)	Yes (%)	No (%)	Yes (%)	Crude odds ratio compared to unvaccinated (95%CI)	Adjusted <sup>b</sup> odds ratio compared to unvaccinated (95%CI)	No (%)	Yes (%)	Crude odds ratio compared to unvaccinated (95%CI)	Adjusted <sup>b</sup> odds ratio compared to unvaccinated (95%CI)
18–64 years	Admission to ICU	1401 (83%)	277 (17%)	40 (80%)	10 (20%)	1.264 (0.625–2.559)	0.946 (0.412–1.975)	80 (86%)	13 (14%)	0.822 (0.451–1.498)	0.717 (0.360–1.323)
	Death in hospital <sup>a</sup>	1641 (98%)	31 (2%)	42 (87.5%)	6 (12.5%)	<b>7.562</b> <b>(2.995–19.095)</b>	2.568 (0.760–7.433)	83 (92%)	7 (8%)	<b>4.464</b> <b>(1.909–10.438)</b>	1.599 (0.512–4.316)
65–79 years	Admission to ICU	271 (71.5%)	108 (28.5%)	49 (83%)	10 (17%)	0.512 (0.250–1.048)	0.512 (0.237–1.007)	68 (83%)	14 (17%)	<b>0.517</b> <b>(0.279–0.957)</b>	<b>0.455</b> <b>(0.201–0.988)</b>
	Death in hospital <sup>a</sup>	335 (90%)	37 (10%)	50 (88%)	7 (12%)	1.268 (0.536–2.998)	1.297 (0.505–2.928)	69 (86%)	11 (14%)	1.443 (0.702–2.969)	1.480 (0.685–2.982)
18–79 years	Admission to ICU	1672 (81%)	385 (19%)	89 (82%)	20 (18%)	0.976 (0.593–1.605)	<b>0.571</b> <b>(0.326–0.955)</b>	148 (85%)	27 (15%)	0.792 (0.518–1.212)	<b>0.516</b> <b>(0.321–0.802)</b>
	Death in hospital <sup>a</sup>	1976 (97%)	68 (3%)	92 (88%)	13 (12%)	<b>4.106</b> <b>(2.189–7.702)</b>	1.234 (0.596–2.393)	152 (89%)	18 (11%)	<b>3.441</b> <b>(1.995–5.935)</b>	1.174 (0.621–2.124)
≥80 years	Admission to ICU	48 (94%)	3 (6%)	69 (93%)	5 (7%)	1.159 (0.264–5.083)	1.889 (0.366–12.300)	72 (92%)	6 (8%)	1.333 (0.318–5.590)	2.156 (0.453–13.475)

	Death in hospital <sup>a</sup>	41 (80%)	10 (20%)	65 (88%)	9 (12%)	0.568 (0.213–1.515)	0.588 (0.206–1.658)	67 (86%)	11 (14%)	0.673 (0.263–1.724)	0.720 (0.269–1.948)
≥18 years	Admission to ICU	1720 (81%)	388 (18%)	158 (86%)	25 (14%)	0.701 (0.454–1.085)	<b>0.497</b> <b>(0.281–0.857)</b>	220 (87%)	33 (13%)	<b>0.665</b> <b>(0.454–0.974)</b>	<b>0.600</b> <b>(0.387–0.908)</b>
	Death in hospital <sup>a</sup>	2017 (96%)	78 (4%)	157 (88%)	22 (12%)	<b>3.624</b> <b>(2.197–5.976)</b>	0.741 (0.402–1.322)	219 (88%)	29 (12%)	<b>3.424</b> <b>(2.187–5.362)</b>	0.842 (0.488–1.422)

398 ICU: Intensive care unit; 95%CI: 95% confidence interval. Bold text = statistically significant results.

399 <sup>a</sup> Excludes patients who were still admitted to hospital at the end of the study period.

400 <sup>b</sup> Adjusted for age, sex, county of residence, regional health authority, date of admission, country of birth, virus variant and underlying risk factors. The variables included in the final multivariable model were

401 obtained by forward model selection and AIC comparison (see supplementary materials D).