

Longitudinal intronic RNA-seq analysis of Parkinson's Disease patients reveals disease-specific genome-wide nascent transcription

Sulev Koks^{1,2,*}, Abigail L. Pfaff^{1,2}, Vivien J. Bubb³ and John P. Quinn³

5 ¹ Perron Institute for Neurological and Translational Science, Perth, WA 6009, Australia

² Centre for Molecular Medicine and Innovative Therapeutics, Murdoch University, Perth, WA 6150, Australia

³ Department of Pharmacology and Therapeutics, Institute of Systems, Molecular and Integrative Biology, University of Liverpool, Liverpool L69 3BX, UK

10 * Correspondence: sulev.koks@perron.uwa.edu.au; Tel.: +61-(0)-8-6457-0313

Abstract

Background: Transcriptomic studies usually focus on gene and exon-based annotations, and only limited experiments have reported the changes in the reads mapping to introns. The analysis of intronic reads allows the detection of nascent transcription that is not influenced by steady -state RNA levels and provides information on actively transcribed genes.

Methods: Here we describe substantial intronic transcriptional changes in Parkinson's Disease (PD) patients compared to healthy controls (CO) at two different timepoints, at the time of diagnosis (BL) and three years later (V08). We used blood RNA-seq data from the Parkinson's Progression Markers Initiative cohort subjects and identified significantly changed transcription of intronic reads only in PD patients during this follow up time.

Results: In CO subjects only nine transcripts demonstrated differentially expressed introns comparing BL and V08. However, in PD patients 4,873 transcripts had differentially expressed introns.

NOTE: This preprint reports new research that has not been certified by peer review and should not be used to guide clinical practice.

introns between visits BL and V08. In addition, at the time of diagnosis (BL visit) we identified
25 836 transcripts and at visit V08 2,184 transcripts with differential intronic expression specific
to PD patients. In contrast, reads mapping to exonic regions demonstrated little variation
indicating high specificity of intronic transcription.

Conclusion: Our study shows that Parkinson’s disease is characterized by substantial changes
in the nascent transcription and understanding these changes could help to understand the
30 molecular pathology underpinning this disease.

Keywords

Parkinson Disease, transcriptome; whole transcriptome analysis; introns; RNA-Seq; nascent
transcript; nascent RNA; PPMI; blood transcriptome

35 1. Introduction

The analysis of the transcriptome is usually based on reads matching exons and gene-based annotations. A large part of reads from RNA-sequencing map to the intronic sequences and this is valid for both ribosomal depleted and poly-A selected RNA protocols [1]. It has been described that 38% of total RNA seq reads and only 8% of poly A RNA reads map to the introns
40 [1]. The significance of the intronic reads has remained controversial and this part of the transcriptome is mostly neglected in transcriptomic analyses [2]. However, recent studies have shown that the reads mapping to introns are genuine and reflect the immediate regulatory responses in transcription compared to post-transcriptional or steady-state changes [2, 3]. The intronic reads reflect the presence of the newly transcribed RNA and as
45 such are useful to explore the complexity of the nascent RNA transcription and co-transcriptional splicing [4-6]. The analysis of intronic reads has been used to develop a detailed transcriptional model within a single sample showing the utility of intronic reads to estimate the genome-wide pre-mRNA synthesis rate [7]. It's also been reported that intronic coverage was related to nascent transcription and co-transcriptional splicing [1]. The levels of
50 intronic reads precede the change in exonic reads by 15 minutes, making them very useful to detect immediate responsive changes in the transcriptome [5]. Therefore, analysis of the intronic reads allows the separation of nascent transcription from post-transcriptional changes during the formation of the genome-wide transcriptome.

Parkinson's Disease (PD) is one of the commonest neurodegenerative diseases with
55 several clearly identified genetic mutations and variations associated with the disease [8-11]. The exact mechanisms of the disease are still not clear and given the complexity of the neuropathology of PD, the genomic network leading to the pathology are similarly likely to be both complex and multifactorial [12-14]. Several studies have attempted transcriptomic

analysis correlating with PD and identified transcriptional signatures specific to the disease or
60 involved in the regulation of the splicing of genes expressed in the basal ganglia [15, 16]. The
analysis of peripheral tissue transcriptomes (blood and skin) overlaid on CNS PD data has
identified significant differences between PD and control transcriptomic profiles [12, 17, 18].
These studies underlined the importance of peripheral tissue analysis to not only determine
biomarkers correlating with the disease but also gain insight into neurodegenerative diseases.
65 In this study we compared longitudinally blood intronic transcriptome of PD patients and
healthy controls (Table 1) at two different timepoints of disease progression, at diagnosis
(baseline, BL) and after three years follow up (V08). To address the immediate changes in the
transcriptome reflected by the changes in nascent RNA we used only reads mapping to the
intronic sequences. Intronic data were compared with the exonic reads to differentiate
70 steady-state transcription from nascent transcription. We used blood whole transcriptome
data from the Parkinson's Progression Markers Initiative (PPMI) cohort that contains data of
PD and CO subjects at these two different timepoints in the trajectory of PD.

Materials and Methods

75 Datasets

In this study we utilized the Parkinson's Progression Markers Initiative (PPMI) cohort data that were downloaded from www.ppmi-info.org/data (16 May 2021). The PPMI is a longitudinal cohort of Parkinson's patients with the aims to describe the progression and biomarkers of Parkinson's disease. The dataset contains whole transcriptome data from the blood together
80 with genetic and clinical data. For the RNA-seq 1µg of RNA isolated from PaxGene tubes was used and sequencing was performed at Hudson's Alpha's Genomic Services Lab on an Illumina NovaSeq6000. All samples went through rRNA and globin reduction, followed by directional cDNA synthesis using the NEB kit. Following second-strand synthesis, the libraries samples were prepared using the NEB/Kapa (NEBKAP) based library kit. Fastq files were merged and
85 aligned to GRCh38p12 by STAR (v2.6.1d) on GENCODE v29.

Workflow

Bam files were imported to the R environment and intronic reads were called using packages "GenomicFeatures" and "GenomicAlignments". Differential expression was detected using "DESeq2" and functionally annotated using "ReactomePA", "DOSE" and "clusterProfiler"
90 packages.

Results

We analysed the intronic expression profiles in PD and CO subjects at the time of diagnosis
95 (BL visit) and three years later (V08). There was little differential expression in exons in all our
comparisons with lots of changes observed in intronic variation. Few active transcription
changes in the CO subjects were observed if we compared intronic transcripts at BL and V08
timepoints (Table 2). In PD patients we detected highly significant and widespread active
transcription in the blood from BL to V08. Remarkably, the differences in transcripts were
100 identified almost exclusively only in introns and very few in exons (Table 2, Figure 1). More
detailed description of our findings follows.

CO subjects

We analysed the longitudinal changes in the expression of the intronic reads of control
subjects at BL and V08 timepoints and identified only limited differences. Nine transcripts
105 showed differential intronic expression below FDR 0.05 (Supplementary Table 1). We also
analysed the differential expression of the exonic transcripts, and nine transcripts were
differentially expressed with exonic reads (Supplementary Table 2). This shows that on both
intronic and exonic levels longitudinal differential expression in control subjects is quite
limited and we can conclude that the transcriptome for control subjects is longitudinally very
110 stable.

PD subjects

Next, we analysed only PD patients and compared their longitudinal intronic and exonic
transcriptional profile. We identified 4,873 differentially expressed intronic reads in PD
patients that differed between the time of diagnosis and after three years follow up
115 (Supplementary Table 3). These 4,873 introns reflect the longitudinal change that is specific
for PD patients during the three-year period. This is in stark contrast to the CO cohort that
exhibited a very stable transcriptome with very limited changes. At the same time, we

detected only 8 exonic reads differentially expressed, showing the specificity of the intronic changes (Supplementary Table 4). Taken together, we can conclude here that PD patients
120 express overwhelming longitudinal changes in the nascent transcription.

Baseline differences

We decided to analyse PD versus CO differences at different timepoints to have two separate cross-sectional snapshots on transcriptional changes. At the time of diagnosis, PD patients had 836 introns differentially expressed compared to the controls (Supplementary Table 5).
125 Only one exon was differentially expressed showing again that the enhanced intronic expression is very specific feature of PD (Supplementary Table 6). These changes are at the time of diagnosis and indicate already existing active transcriptional changes for the moment of clinical presentation.

Differences at the three-year follow up visit

130 While it is important to have a cross section snapshot at the time of diagnosis, longitudinal study design allows us to explore the time-dependent alterations in the transcriptome. After three years of diagnosis PD patients had 2,184 intronic transcripts differentially expressed (Supplementary Table 7). At the same time only 17 transcripts were from exon sequences indicating again very high specificity toward intronic transcription (Supplementary Table 8).
135 From all the detected 2,184 differential transcripts 329 were identical to the transcripts at the BL timepoint demonstrating major changes in nascent transcriptional changes in the PD group. Also, one transcript, RP11-403I13.4-002, was identical in the exonic and intronic analysis of V08 timepoint.

Taken together, differential transcriptome analysis of introns indicated specific and
140 overwhelming intronic transcription in PD patients compared to CO subjects, this difference was evident at the time of diagnosis and escalated during the three-year progression of the disease.

Pathway analysis of longitudinal changes

We performed functional pathway analysis to identify the enriched pathways linked to the
145 activated intronic transcription and to identify the common theme of these activated
transcripts. As longitudinal PD changes were the most remarkable, we used for pathway
analysis only PD data and compared the intronic transcriptome profiles between the visits
V08 and BL.

Reactome enrichment analysis, although the analysis was performed in blood RNAseq,
150 identified the nervous system related themes to be enriched in the differential profile of the
intronic transcription (Figure 2, Table 3). The pathways we identified were neuronal system,
protein-protein interactions at synapses, transmission across chemical synapses and muscle
contraction related pathways to name some (Table 2). Remarkably, the activation of the
neuronal pathways was clear and is illustrated on the Figure 2 as bar plot and dot plot showing
155 the number of genes identified and gene ratio. To illustrate this enrichment further, we used
heat plot and tree plot (Figure 3) showing again large number of genes mapping to the
pathways. This indicates that the longitudinal changes in active transcription changes in the
blood maybe reflecting changes in the nervous system and most likely reflect the longitudinal
changes related to PD progression. This statement is supported by the longitudinal
160 comparison of PD and CO groups separately. As very limited transcriptional alterations in the
longitudinal CO subgroup compared to PD subgroup were found, we can quite confidently
conclude that these pathways and biological functions are directly related to PD.

KEGG enrichment analysis was performed to validate our previous pathway analysis
and to identify potential PD specific pathways. Indeed, when using KEGG annotation, the
165 most significantly changed pathways were ubiquitin mediated proteolysis, protein processing

in endoplasmic reticulum, mitophagy and autophagy. All these pathways are directly involved in the pathogenesis of PD.

While we analyzed the blood whole transcriptome data, using the intronic reads helped to identify genes with active transcriptional change reflecting the dynamic alterations
170 in the transcriptional balance of the cells. By using blood data on clinical samples, we were able to identify PD specific pathogenetic networks that have been identified to be involved in PD using cellular models and biochemical experiments. These results show that blood transcriptome can reflect nascent transcription specific for the disease condition.

Taken together, analysis of the intronic reads in the whole genome transcriptome
175 study allows to detect active nascent transcription and gives much more detailed information compared to the exon centric steady-state analysis of transcription. We were able to show large scale intronic activation that helped to detect actively transcribed transcripts that we were able to map into functionally and clinically relevant genetic networks. Intronic transcriptome analysis provides information about the condition-specific transcripts that can
180 help to identify genomic patterns specific for the condition being studied.

Discussion

Whole transcriptome analysis is typically based on gene- or exon-based annotation, quite seldom transcript-based annotation is used [19, 20]. Gene-based annotation is an amalgamated approach where the reads mapping to different exons and transcripts will be merged under single functional identifier, the gene [21]. This approach is the most widely used and therefore most of the whole transcriptome studies provide this aggregated information. Inevitably, this approach leads to the loss of power to detect precise and detailed changes in transcription leading to the loss of the sensitivity of the tool. The avoidance of transcript-based annotation is understandable as the bioinformatics tools to call transcripts accurately from short reads data are limited. Only recently Kallisto and Salmon were developed to provide quasi-mapping approach and accurate transcript calling to overcome the issue with transcript detection [22, 23]. Nevertheless, we cannot distinguish nascent from the steady state transcription.

Recently intronic mapping was suggested to be an alternative to identify the transcripts that were recently transcribed [2]. This approach, based on the co-transcriptional splicing and detection of introns, indicates that the transcripts still have introns included. Detecting this event in the transcriptional process gives important additional power to measure the genes that are actively and newly transcribed compared to the steady state stable transcription in the background. The analysis of intronic transcripts has successfully been applied for human basal ganglia data with clear evidence for the reproducibility of the intronic eQTLs (i-eQTLs) and their utility to analyze the rate of transcription [15]. Interestingly, in this paper authors also identified highly specific enrichment of disease-specific transcription suggesting the suitability of the intron based transcriptional analysis. The

205 authors also confirmed the mapping of intronic signals to novel transcripts and validated annotation-independent approach in transcriptomic analysis.

We have identified the longitudinal changes in the intronic transcription in the PD patients. The PD changes could be specific for the disease condition as only minor differences were found in the analysis of the controls. Indeed, functional annotation of the intronic
210 transcripts revealed activation of pathways closely related to the pathophysiology of PD although only blood RNAseq was analyzed. The functional significance of that data awaits further analysis.

Comparison of the intronic and exonic signals has recently been systemically analyzed and the reflection of the nascent transcription by the intronic reads confirmed [2]. Several
215 experimental studies indicate that intronic transcription is a reliable proxy to measure the nascent transcription [7]. Moreover, comparing exonic reads to intronic signals helps to differentiate transcriptional changes from post-transcriptional changes. Therefore, the differences we have identified are caused by the changes in the active transcription and not due to changes related to the normal physiological processes.

220

Conclusions

In conclusion, we identified highly specific longitudinal nascent transcriptional profile in the blood of Parkinson patients that possibly reflects the changes caused by the molecular pathological processes of the disease and are relevant to improve our understanding about
225 the progression of the disease.

Supplementary Materials

Table S1: SupplementaryTable1.xls, Table S2: SupplementaryTable2.xls,

Table S3: SupplementaryTable3.xls, Table S4: SupplementaryTable4.xls,

230 Table S5: SupplementaryTable5.xls, Table S6: SupplementaryTable6.xls,

Table S7: SupplementaryTable7.xls, Table S8: SupplementaryTable8.xls.

Author Contributions

Conceptualization, S.K.; methodology, A.L.P. and S.K.; formal analysis, S.K.; data interpretation, A.L.P., V.J.B., J.P.Q. and S.K.; writing—original draft preparation, S.K.; writing—

235 review and editing, A.L.P., V.J.B., J.P.Q. and S.K.; funding acquisition, A.L.P. and S.K. All authors have read and agreed to the published version of the manuscript.

Funding

This research was funded by MSWA, The Michael J. Fox Foundation, Shake It Up Australia and Perron Institute for Neurological and Translational Science.

240 Institutional Review Board Statement

The study was conducted according to the guidelines of the Declaration of Helsinki and approved by the Institutional Human Ethics Research Office of The University of Western Australia (protocol code RA/4/20/5308 approved on 05.08.2019)

Informed Consent Statement

245 Informed consent was obtained from all subjects involved in the study by PPMI.

Data Availability Statement

Raw data are available from the PPMI website (www.ppmi-info.org/data (accessed on 19 January 2021)).

Acknowledgments

250 This work was supported by resources provided by the Pawsey Supercomputing Centre with funding from the Australian Government and the Government of Western Australia. Data used in the preparation of this article were obtained from the Parkinson's Progression Markers Initiative (PPMI) database (www.ppmi-info.org/data (accessed on 19 January 2021)).

For up-to-date information on the study, visit www.ppmi-info.org. PPMI is sponsored and
255 partially funded by The Michael J. Fox Foundation for Parkinson’s Research. PPMI—a public-
private partnership—Is funded by the Michael J. Fox Foundation for Parkinson’s Research and
funding partners, including Abbvie, Allergan, Amathus Therapeutics, Avid
Radiopharmaceuticals, Biogen Idec, Biogen, Bristol-Myers Squibb, Celgene, Denali, GE
Healthcare, Genentech, GlaxoSmithKline, Janssen neuroscience, Lilly, Lundbeck, Merck, Meso
260 Scale Discovery, Pfizer, Piramal, Prevail Therapeutics, Roche, Sanofi Genzyme, Servier,
Takeda, Teva, UCB, Verily and Voyager Therapeutics.

Conflicts of Interest

The authors declare no conflict of interest related to this study. The funders had no role in
the design of the study; in the collection, analyses, or interpretation of data; in the writing of
265 the manuscript, or in the decision to publish the results.

Table 1. Overview of the study samples and design. Subject numbers with the blood whole transcriptome data of the PPMI cohort are given.

270

Study group	Baseline (BL)	Three years (V08)
CO	189	157
PD	390	338

275 **Table 2.** Comparison of the differential expression of the intronic and exonic reads. For baseline (BL) and three-year (V08) time points PD was compared to CO. For PD and CO groups, the effect of time (three years) was measured (V08 versus BL), significance threshold was FDR < 0.05.

Group	Introns	Exons	Comparison
BL	836	1	PD versus CO
V08	2184	17	PD versus CO
PD	4873	8	V08 versus BL
CO	9	9	V08 versus BL

280 **Table 3.** Reactome pathway over-representation analysis. Longitudinal changes of the intronic transcription in PD patients were associated with the biological themes related to the nervous system.

Description	Gene Ratio	P-value	P-adjusted
Extracellular matrix organization	80/1505	2.6×10^{-9}	3.1×10^{-6}
Neuronal System	100/1505	4.3×10^{-9}	3.1×10^{-6}
Protein-protein interactions at synapses	30/1505	6.7×10^{-7}	0.0003
Muscle contraction	50/1505	1.0×10^{-5}	0.003
Striated Muscle Contraction	14/1505	0.0001	0.02
Transmission across Chemical Synapses	59/1505	0.0002	0.02
Neurexins and neuroligins	18/1505	0.0003	0.02

285

Legends to the figures

Figure 1. The figure illustrates the number of exonic and intronic reads in different subgroups and at different timepoints. The number of intronic reads is very high in PD patients compared to CO subjects. Exonic reads didn't change by the disease status or by the progression of the disease. It is also evident that the number of intronic reads increases from the baseline visit to three-year follow up.

Figure 2. Reactome pathway analysis indicates longitudinal enrichment of the neuronal themes in the blood transcriptome of the PD patients. **(a)** Bar plot of all statistically significant enriched pathways indicates the different number of genes for each pathway. **(b)** Dot plot of the enriched pathways shows the relation between the gene count, gene ratio and adjusted p-values.

Figure 3. Reactome pathway analysis identified several neuronal pathways enriched longitudinally in PD blood transcriptome. **(a)** Heat plot showing individual genes and their mapping to pathways; **(b)** Tree plot illustrates clustering of the pathways, number of matched genes and adjusted p-values.

Figure 4. KEGG pathway of the protein processing in the endoplasmic reticulum and the mapped genes from the intronic transcriptome. Mapped genes are in red, green, or grey colors.

Figure 5. KEGG mitophagy pathway. Longitudinal blood intronic transcriptome profile of Parkinson disease mapped significantly to the mitophagy pathway. Mapped genes are in red, green, or grey colours.

310

References

1. Ameer, A.; Zaghlool, A.; Halvardson, J.; Wetterbom, A.; Gyllensten, U.; Cavelier, L.; Feuk, L., Total RNA sequencing reveals nascent transcription and widespread co-transcriptional splicing in the human brain. *Nat Struct Mol Biol* **2011**, *18*, (12), 1435-40.
315
2. Gaidatzis, D.; Burger, L.; Florescu, M.; Stadler, M. B., Analysis of intronic and exonic reads in RNA-seq data characterizes transcriptional and post-transcriptional regulation. *Nat Biotechnol* **2015**, *33*, (7), 722-9.
- 320 3. Wissink, E. M.; Vihervaara, A.; Tippens, N. D.; Lis, J. T., Nascent RNA analyses: tracking transcription and its regulation. *Nat Rev Genet* **2019**, *20*, (12), 705-723.
4. Core, L. J.; Waterfall, J. J.; Lis, J. T., Nascent RNA sequencing reveals widespread pausing and divergent initiation at human promoters. *Science* **2008**, *322*, (5909), 1845-8.
- 325 5. Hendriks, G. J.; Gaidatzis, D.; Aeschmann, F.; Großhans, H., Extensive oscillatory gene expression during *C. elegans* larval development. *Mol Cell* **2014**, *53*, (3), 380-92.
6. Khodor, Y. L.; Rodriguez, J.; Abruzzi, K. C.; Tang, C. H.; Marr, M. T., 2nd; Rosbash, M., Nascent-seq indicates widespread cotranscriptional pre-mRNA splicing in *Drosophila*. *Genes Dev* **2011**, *25*, (23), 2502-12.
- 330 7. Gray, J. M.; Harmin, D. A.; Boswell, S. A.; Cloonan, N.; Mullen, T. E.; Ling, J. J.; Miller, N.; Kuersten, S.; Ma, Y. C.; McCarroll, S. A.; Grimmond, S. M.; Springer, M., SnapShot-Seq: a method for extracting genome-wide, in vivo mRNA dynamics from a single total RNA sample. *PLoS One* **2014**, *9*, (2), e89673.
8. Iwaki, H.; Blauwendraat, C.; Leonard, H. L.; Kim, J. J.; Liu, G.; Maple-Grødem, J.; Corvol, J. C.; Pihlstrøm, L.; van Nimwegen, M.; Hutten, S. J.; Nguyen, K. H.; Rick, J.; Eberly, S.; Faghri, F.; Auinger, P.; Scott, K. M.; Wijeyekoon, R.; Van Deerlin, V. M.; Hernandez, D. G.; Gibbs, J. R.; Chitrala, K. N.; Day-Williams, A. G.; Brice, A.; Alves, G.; Noyce, A. J.; Tysnes, O. B.; Evans, J. R.; Breen, D. P.; Estrada, K.; Wegel, C. E.; Danjou, F.; Simon, D. K.; Andreassen, O.; Ravina, B.; Toft, M.; Heutink, P.; Bloem, B. R.; Weintraub, D.;
335 9. Barker, R. A.; Williams-Gray, C. H.; van de Warrenburg, B. P.; Van Hilten, J. J.; Scherzer, C. R.; Singleton, A. B.; Nalls, M. A., Genomewide association study of Parkinson's disease clinical biomarkers in 12 longitudinal patients' cohorts. *Mov Disord* **2019**, *34*, (12), 1839-1850.
- 340 9. Bandres-Ciga, S.; Ahmed, S.; Sabir, M. S.; Blauwendraat, C.; Adames-Gómez, A. D.; Bernal-Bernal, I.; Bonilla-Toribio, M.; Buiza-Rueda, D.; Carrillo, F.; Carrión-Claro, M.; Gómez-Garre, P.; Jesús, S.; Labrador-Espinosa, M. A.; Macias, D.; Méndez-Del-Barrio, C.; Perrián-Tocino, T.; Tejera-Parrado, C.; Vargas-González, L.; Díez-Fairen, M.; Alvarez, I.; Tartari, J. P.; Buongiorno, M.; Aguilar, M.; Gorostidi, A.; Bergareche, J. A.; Mondragon, E.; Vinagre-Aragon, A.; Croitoru, I.; Ruiz-Martínez, J.; Dols-Icardo, O.;
350 Kulisevsky, J.; Marín-Lahoz, J.; Pagonabarraga, J.; Pascual-Sedano, B.; Ezquerro, M.; Cámara, A.; Compta, Y.; Fernández, M.; Fernández-Santiago, R.; Muñoz, E.; Tolosa, E.; Valldeoriola, F.; Gonzalez-Aramburu, I.; Sanchez Rodriguez, A.; Sierra, M.; Menéndez-González, M.; Blázquez, M.; García, C.; Suarez-San Martín, E.; García-Ruiz, P.; Martínez-Castrillo, J. C.; Vela-Desojo, L.; Ruz, C.; Barrero, F. J.; Escamilla-Sevilla, F.;
355 Mínguez-Castellanos, A.; Cerdan, D.; Taberner, C.; Gomez Heredia, M. J.; Perez Errazquin, F.; Romero-Acebal, M.; Feliz, C.; Lopez-Sendon, J. L.; Mata, M.; Martínez Torres, I.; Kim, J. J.; Dalgard, C. L.; Brooks, J.; Saez-Atienzar, S.; Gibbs, J. R.; Jorda, R.;

- 360 Botia, J. A.; Bonet-Ponce, L.; Morrison, K. E.; Clarke, C.; Tan, M.; Morris, H.; Edsall, C.; Hernandez, D.; Simon-Sanchez, J.; Nalls, M. A.; Scholz, S. W.; Jimenez-Escrig, A.; Duarte, J.; Vives, F.; Duran, R.; Hoenicka, J.; Alvarez, V.; Infante, J.; Marti, M. J.; Clarimón, J.; López de Munain, A.; Pastor, P.; Mir, P.; Singleton, A., The Genetic Architecture of Parkinson Disease in Spain: Characterizing Population-Specific Risk, Differential Haplotype Structures, and Providing Etiologic Insight. *Mov Disord* **2019**, 34, (12), 1851-1863.
- 365 10. Nalls, M. A.; Blauwendraat, C.; Vallerga, C. L.; Heilbron, K.; Bandres-Ciga, S.; Chang, D.; Tan, M.; Kia, D. A.; Noyce, A. J.; Xue, A.; Bras, J.; Young, E.; von Coelln, R.; Simón-Sánchez, J.; Schulte, C.; Sharma, M.; Krohn, L.; Pihlstrøm, L.; Siitonen, A.; Iwaki, H.; Leonard, H.; Faghri, F.; Gibbs, J. R.; Hernandez, D. G.; Scholz, S. W.; Botia, J. A.; Martinez, M.; Corvol, J. C.; Lesage, S.; Jankovic, J.; Shulman, L. M.; Sutherland, M.; Tienari, P.; Majamaa, K.; Toft, M.; Andreassen, O. A.; Bangale, T.; Brice, A.; Yang, J.; Gan-Or, Z.; Gasser, T.; Heutink, P.; Shulman, J. M.; Wood, N. W.; Hinds, D. A.; Hardy, J. A.; Morris, H. R.; Gratten, J.; Visscher, P. M.; Graham, R. R.; Singleton, A. B., Identification of novel risk loci, causal insights, and heritable risk for Parkinson's disease: a meta-analysis of genome-wide association studies. *Lancet Neurol* **2019**, 18, 370 (12), 1091-1102.
- 375 11. Billingsley, K. J.; Barbosa, I. A.; Bandres-Ciga, S.; Quinn, J. P.; Bubb, V. J.; Deshpande, C.; Botia, J. A.; Reynolds, R. H.; Zhang, D.; Simpson, M. A.; Blauwendraat, C.; Gan-Or, Z.; Gibbs, J. R.; Nalls, M. A.; Singleton, A.; International Parkinson's Disease Genomics, C.; Ryten, M.; Koks, S., Mitochondria function associated genes contribute to Parkinson's Disease risk and later age at onset. *NPJ Parkinsons Dis* **2019**, 5, 8.
- 380 12. Kurvits, L.; Lattekivi, F.; Reimann, E.; Kadastik-Eerme, L.; Kasterpalu, K. M.; Koks, S.; Taba, P.; Planken, A., Transcriptomic profiles in Parkinson's disease. *Exp Biol Med (Maywood)* **2021**, 246, (5), 584-595.
- 385 13. Müller-Nedebock, A. C.; van der Westhuizen, F. H.; Köks, S.; Bardien, S., Nuclear Genes Associated with Mitochondrial DNA Processes as Contributors to Parkinson's Disease Risk. *Mov Disord* **2021**, 36, (4), 815-831.
14. Pfaff, A. L.; Bubb, V. J.; Quinn, J. P.; Koks, S., An Increased Burden of Highly Active Retrotransposition Competent L1s Is Associated with Parkinson's Disease Risk and Progression in the PPMI Cohort. *Int J Mol Sci* **2020**, 21, (18).
- 390 15. Guelfi, S.; D'Sa, K.; Botía, J. A.; Vandrovcova, J.; Reynolds, R. H.; Zhang, D.; Trabzuni, D.; Collado-Torres, L.; Thomason, A.; Quijada Leyton, P.; Gagliano Taliun, S. A.; Nalls, M. A.; Small, K. S.; Smith, C.; Ramasamy, A.; Hardy, J.; Weale, M. E.; Ryten, M., Regulatory sites for splicing in human basal ganglia are enriched for disease-relevant information. *Nat Commun* **2020**, 11, (1), 1041.
- 395 16. Reynolds, R. H.; Botía, J.; Nalls, M. A.; Hardy, J.; Gagliano Taliun, S. A.; Ryten, M., Moving beyond neurons: the role of cell type-specific gene regulation in Parkinson's disease heritability. *NPJ Parkinsons Dis* **2019**, 5, 6.
17. Kurvits, L.; Reimann, E.; Kadastik-Eerme, L.; Truu, L.; Kingo, K.; Erm, T.; Köks, S.; Taba, P.; Planken, A., Serum Amyloid Alpha Is Downregulated in Peripheral Tissues of Parkinson's Disease Patients. *Front Neurosci* **2019**, 13, 13.
- 400 18. Planken, A.; Kurvits, L.; Reimann, E.; Kadastik-Eerme, L.; Kingo, K.; Köks, S.; Taba, P., Looking beyond the brain to improve the pathogenic understanding of Parkinson's disease: implications of whole transcriptome profiling of Patients' skin. *BMC Neurol* **2017**, 17, (1), 6.

- 405 19. Yao, S.; Zhang, X.; Zou, S. C.; Zhu, Y.; Li, B.; Kuang, W. P.; Guo, Y.; Li, X. S.; Li, L.; Wang, X. Y., A transcriptome-wide association study identifies susceptibility genes for Parkinson's disease. *NPJ Parkinsons Dis* **2021**, *7*, (1), 79.
20. Conesa, A.; Madrigal, P.; Tarazona, S.; Gomez-Cabrero, D.; Cervera, A.; McPherson, A.; Szczesniak, M. W.; Gaffney, D. J.; Elo, L. L.; Zhang, X.; Mortazavi, A., A survey of best practices for RNA-seq data analysis. *Genome Biol* **2016**, *17*, 13.
- 410 21. Falchetti, M.; Prediger, R. D.; Zanotto-Filho, A., Classification algorithms applied to blood-based transcriptome meta-analysis to predict idiopathic Parkinson's disease. *Comput Biol Med* **2020**, *124*, 103925.
22. Bray, N. L.; Pimentel, H.; Melsted, P.; Pachter, L., Near-optimal probabilistic RNA-seq quantification. *Nat Biotechnol* **2016**, *34*, (5), 525-7.
- 415 23. Patro, R.; Duggal, G.; Love, M. I.; Irizarry, R. A.; Kingsford, C., Salmon provides fast and bias-aware quantification of transcript expression. *Nat Methods* **2017**, *14*, (4), 417-419.

420

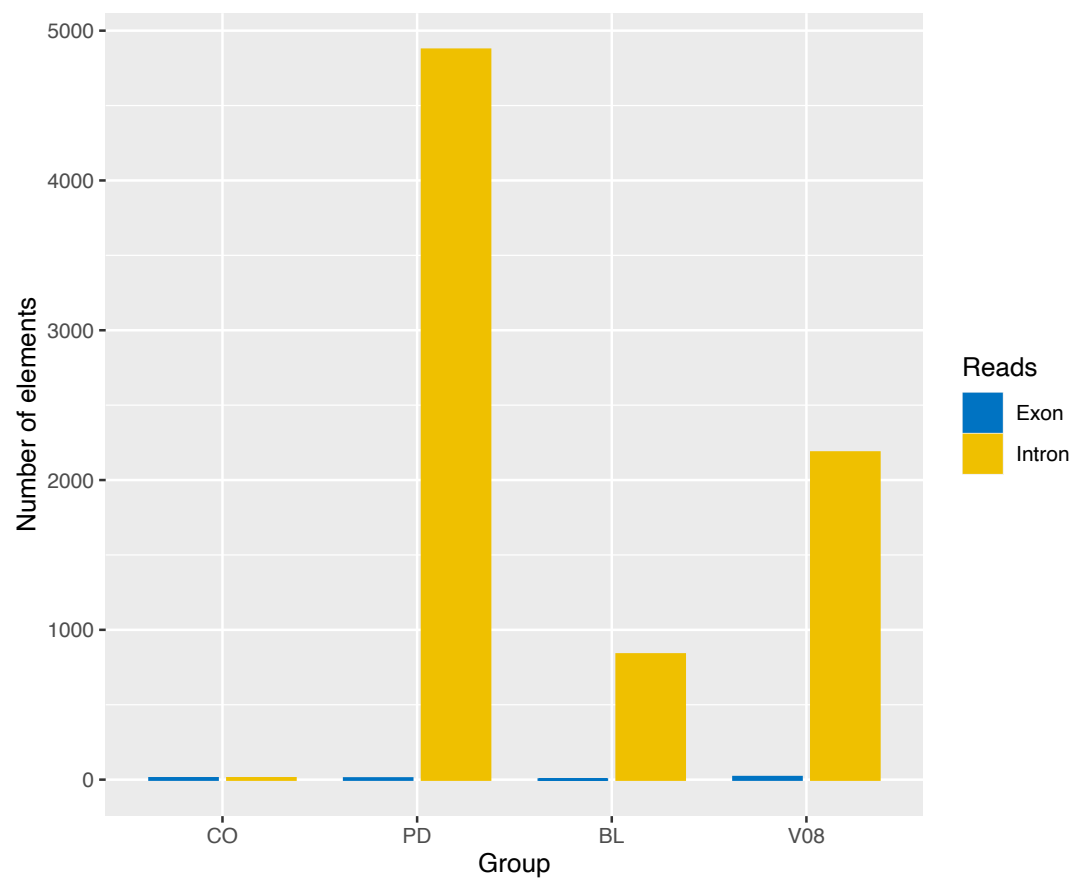
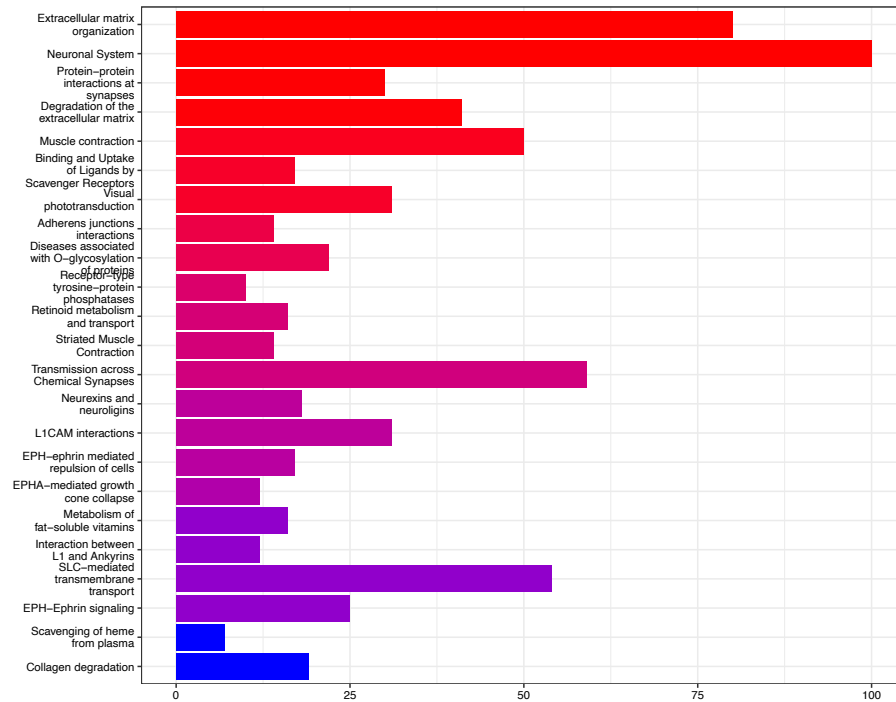
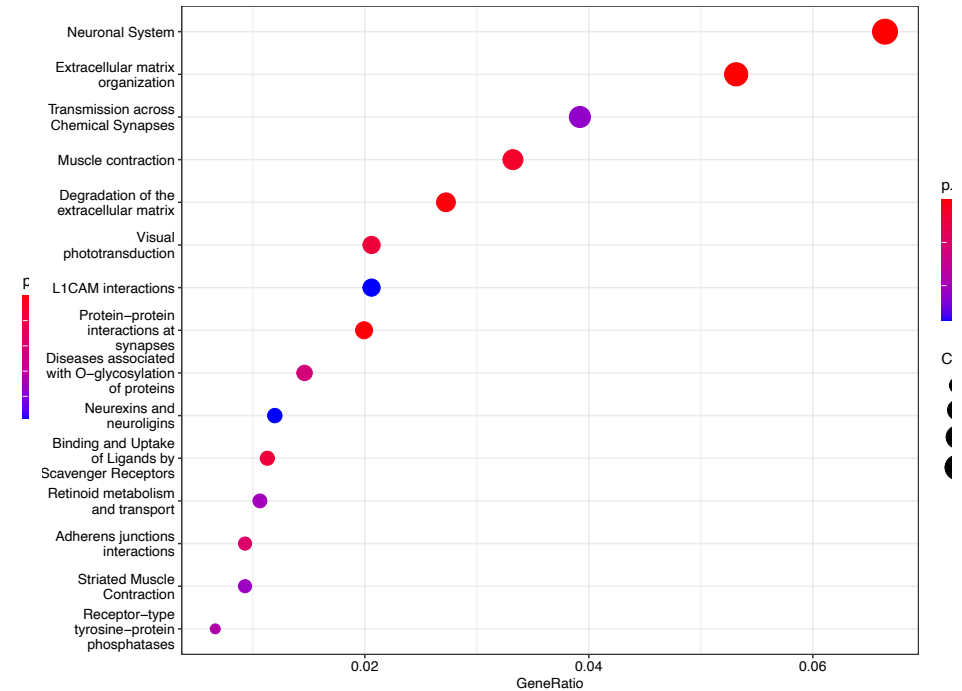


Figure 1. The figure illustrates the number of exonic and intronic reads in different subgroups and at different timepoints

425



(a)



(b)

430

Figure 2. Reactome pathway analysis indicates longitudinal enrichment of the neuronal themes in the blood transcriptome of the PD patients. **(a)** Barplot of all statistically significant enriched pathways indicates the different number of genes for each pathway. **(b)** Dotplot of the enriched pathways shows the relation between the gene count, gene ratio and adjusted p-values.

435

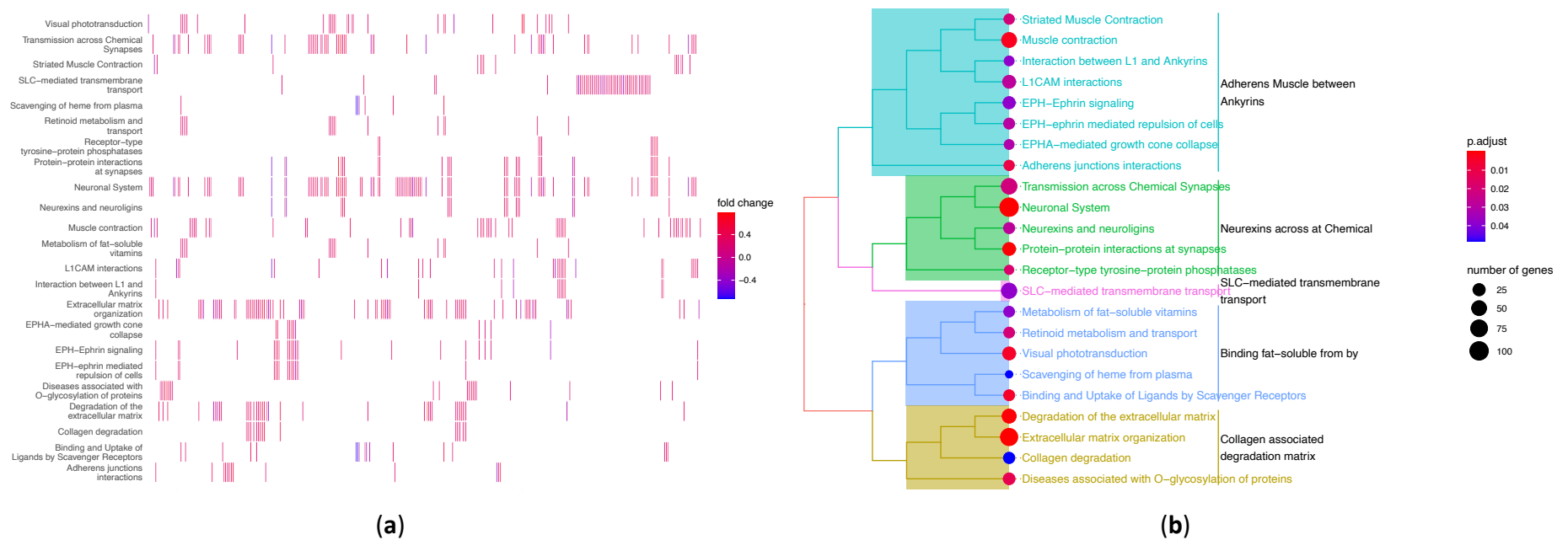


Figure 3. Reactome pathway analysis identified several neuronal pathways enriched longitudinally in PD blood transcriptome. **(a)** Heat plot showing individual genes and their mapping to pathways; **(b)** Tree plot illustrates clustering of the pathways, number of matched genes and adjusted p-values.

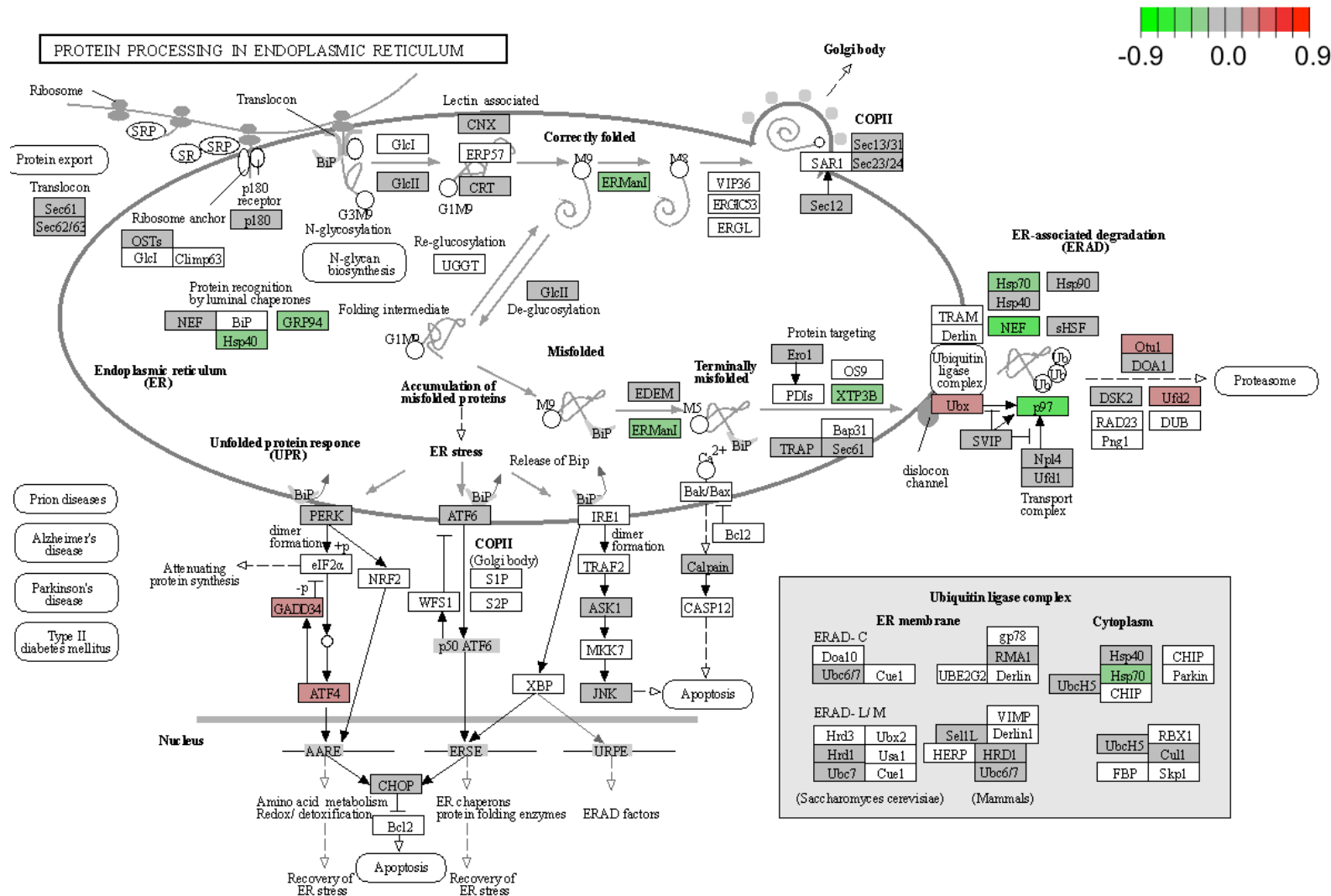
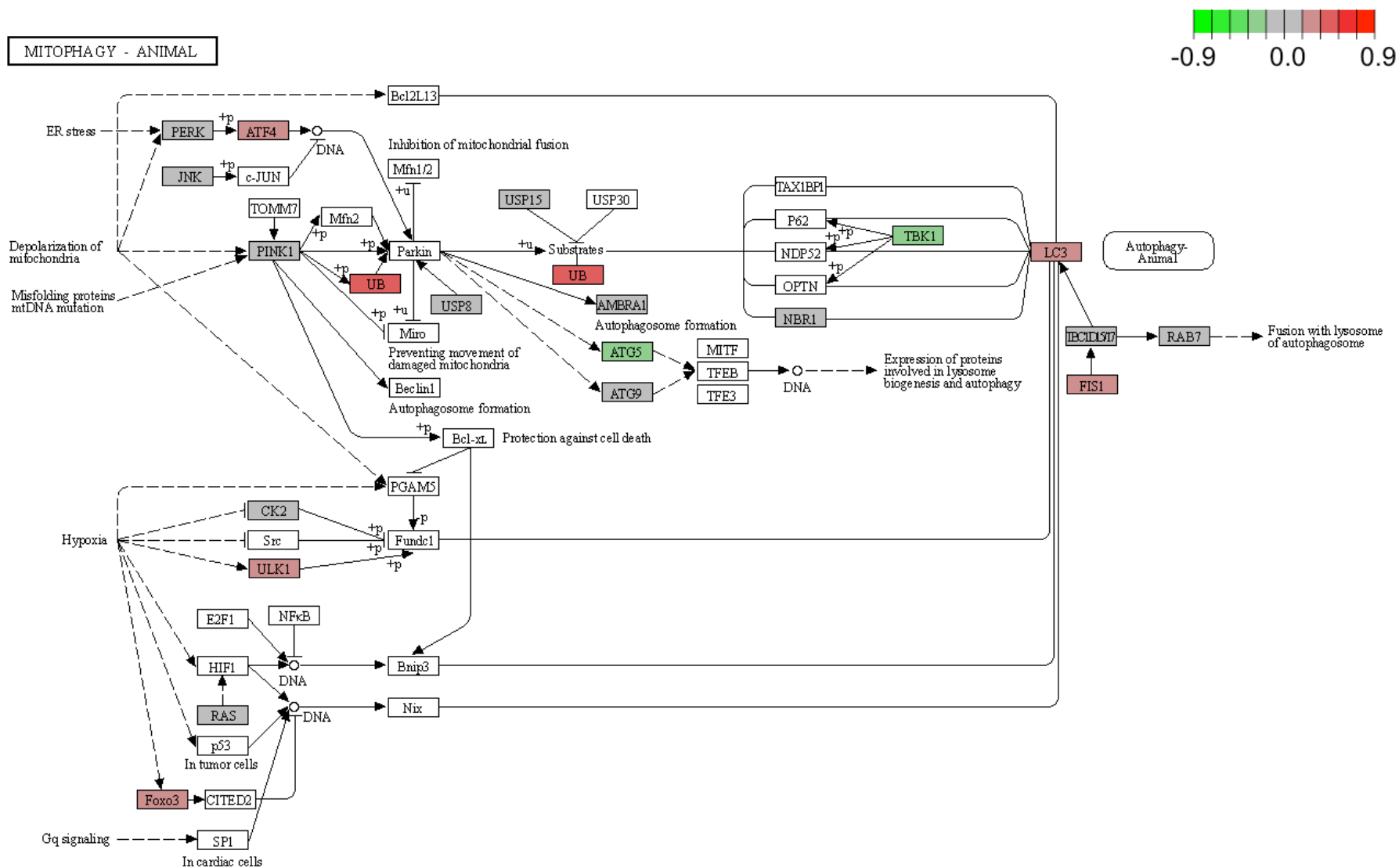


Figure 4. KEGG pathway of the protein processing in the endoplasmic reticulum and the mapped genes from the intronic transcriptome. Mapped genes are in red, green, or grey colours.



445

Figure 5. KEGG mitophagy pathway. Longitudinal blood intronic transcriptome profile of Parkinson disease mapped significantly to the mitophagy pathway. Mapped genes are in red, green, or grey colours.