

1 **Spatiotemporal epidemiology of HIV between 1997 and 2020 in Kerman, Iran**

2 **Hossein Mirzaei¹, Ali Mirzazadeh², Mohsen Barouni³, Ebrahim Ranjbar⁴, Sana Eybpoosh⁵,**
3 **Hamid Sharifi^{1*}**

4 1- HIV/STI Surveillance Research Center, and WHO Collaborating Center for HIV
5 Surveillance, Institute for Futures Studies in Health, Kerman University of Medical
6 Sciences, Kerman, Iran.

7 2- Department of Epidemiology and Biostatistics, Institute for Global Health Sciences,
8 University of California San Francisco, USA

9 3- Health Services Management Research Center, Institute for Futures Studies in Health,
10 Kerman University of Medical Sciences, Kerman, Iran

11 4- Kerman Counseling Center for Behavioral Disorders, Kerman University of Medical
12 Sciences, Kerman, Iran

13 5- Department of Epidemiology and Biostatistics, Research Centre for Emerging and
14 Reemerging Infectious Diseases, Pasteur Institute of Iran, Tehran, Iran

15

16 **Correspondence to:** Hamid Sharifi,

17 HIV/STI Surveillance Research Center, and WHO Collaborating Center for HIV Surveillance, Kerman
18 University of Medical Sciences, Medical University Campus, Haft-Bagh Highway, Kerman, Iran

19 E-mail: hsharifi@kmu.ac.ir; sharifihami@gmail.com

20 **Postal Code:** 7616911320

21 **Telefax:** +98-(0)-34-31325409

22

23 **Word count: 2399 (Title and abstract, Keywords, Key message, table, and references)**

24

25

26

27 **ABSTRACT:**

28 **Objectives:** We assessed the epidemiological and spatiotemporal patterns of HIV cases reported
29 between 1997 and 2020 in Kerman, Iran.

30 **Method:** We compared the age, gender, modes of transmission, and spatial distribution of newly
31 diagnosed HIV-infected people over time (1997-2004, 2005-2012, and 2013-2020). We also
32 mapped the services and spatial distribution for people who were living with HIV in
33 2020. The nearest neighbor index and kernel density were used to identify the spatial distribution
34 of HIV cases. Chi-square for trend, one-sample t-test, and Kruskal–Wallis H tests were used to
35 compare the differences over time. Stata 17 and ArcGIS 10.3 were used for HIV surveillance
36 data analysis.

37 **Results:** A total of 459 (25.6% women) people were diagnosed with HIV during 1997-2020. The
38 proportion of women (from 9.3% in 1997-2004 to 48.3% in 2013-2020, $P < 0.001$), those
39 infected with HIV through sexual contacts (from 11.6% in 1997-2004 to 50.3% in 2013-2020, P
40 < 0.001), proportion of HIV infected children under 5 years of age (0.8% in 1997-2004 to 5.4%
41 in 2013-2020, $P = 0.01$), and mean age at diagnosis among men (from 34.9 in 1997-2004 to 39.8
42 years in 2013-2020, $P = 0.004$) significantly increased over time. The mean age at diagnosis
43 among women (34.5 years in 2013-2020), and the proportion who diagnosed with CD4 count
44 < 200 (36.2% in 2013-2020) did not change significantly over time. The density map of residents
45 with HIV infection had the highest density in the northern and southern edges of the city in
46 2005-2012. The HIV clusters in 2020 matched with the locations of fixed and mobile services.

47 **Conclusion:** We observed important changes in HIV epidemiology regarding gender, modes of
48 transmission, number of pediatric cases, and density maps over time which should be considered
49 for precise targeting of HIV prevention, treatment, and outreach programs in this city.

50 **Keywords:** Epidemiology, Spatio-Temporal Analysis, Human immunodeficiency virus, Iran

51

52

53

54

55

56

Key Messages

- The proportion of women, those infected with HIV through sexual contacts, pediatric cases, and the mean age at diagnosis among men significantly increased over time.
- The density map of residents living with HIV had the highest density in the northern and southern edges of the city in 2005-2012.
- The HIV clusters in 2020 matched with locations of fixed and mobile services.

57

58

59

60

61

62

63 **INTRODUCTION:**

64 HIV epidemic in Iran is concentrated among key populations including people who inject drug
65 (PWID) (15.2% in 2010, 10.9 in 2014, and 3.6% in 2020)¹⁻³ and partners of PWID (2.8% in
66 2010),⁴ female sex workers (FSW) (2.1% in 2015),⁵ and prisoner (1.2% in 2014),⁶ but the
67 prevalence of HIV is very low in the general population (0.15%),⁷ blood donors (3 per 100,000
68 donations from 2003 to 2017)⁸ and pregnant women (0.04%).⁹

69 The Joint United Nations Programme on HIV/AIDS (UNAIDS) estimated 59,314 people living
70 with HIV (PLWH) in Iran in 2019, of whom only 22,054 (37%) were diagnosed and reported to
71 the National HIV Case-Based Surveillance.¹⁰ Among the diagnosed cases, 67% (25% of
72 estimated cases) were under antiretroviral treatment, and 85% of treatment cases (11% of
73 estimated cases) had viral load suppression. The gap diagnosis of PLWH is the main gap in the
74 national HIV program in Iran.¹⁰ Among patients who were diagnosed with HIV in Iran from
75 1967 to 2018, most of them were male (83%), aged between 16 and 40 years old (67.6%), and
76 infected through injecting drug use (61.9%).⁹

77 Our recent analysis of the HIV continuum of care in Kerman showed that of 1113 estimated
78 number of PLWH in 2016, 437 (39.3%) were diagnosed, 10.1% were on antiretroviral treatment,
79 and 7.3% had viral suppression.¹¹ Beside this cascade analysis, the epidemiological patterns,
80 spatial and temporal changes in HIV epidemiology have not been studied yet; This information is
81 critical for precise targeting of HIV programs in Kerman. In this paper, we used HIV
82 surveillance data from all people diagnosed with HIV in Kerman between 1997 and 2020 to
83 assess the trend in the HIV epidemiological and spatial patterns.

84 **METHODS:**

85 **Study design and data**

86 We used case-based surveillance data of all HIV cases reported in Kerman city between 1997-
87 2020. Demographic data, age, gender, residential address, first CD4 cell count at the time of
88 diagnosis, modes of transmission (MOT), and date of diagnosis were extracted from the HIV
89 surveillance database. To assess the trend, we analyzed the spatial and epidemiological data by
90 three equal time intervals of 1997-2004, 2005-2012, and 2013-2020.

91 **Study location and environment:**

92 Kerman city is located in the southeast of Iran, with a population of around 540,000 individuals.

93 ¹² One voluntary HIV counseling and testing (VCT) center is responsible for providing care to all
94 people diagnosed with HIV in Kerman. The VCT is the referral center for all people who test
95 positive (or reactive) for HIV at any health facility, DIC (Drop-in center), blood transmission
96 organization, or laboratory in Kerman. For any new referral case, the VCT center collects and
97 sends blood sample for confirmatory HIV diagnosis to a central public health laboratory in
98 Kerman. After confirmation, the VCT staff will submit data to the electronic portal of the
99 National HIV Surveillance. Kerman medical university is supervising the VCT and central
100 public health laboratory.

101 **Spatial data analysis**

102 We used Google earth for Georeferencing the residential addresses of HIV-infected people
103 (converting a written address to a position on the map surface). ¹³ The nearest neighbor index
104 (NNI) was used to identify if the distribution of diagnosed HIV cases was either random or
105 clustered. The nearest neighbor index was calculated as the observed average distance divided by
106 the expected average distance. ¹⁴ We produced density maps over the study periods by Kernel
107 density method. ¹⁵ The ArcGIS version 10.3 was used for spatial data analysis.

108 **Epidemiological data analysis**

109 For continuous variables (e.g., age, CD4 count), mean, standard division (SD), median and
110 interquartile range (IQR), and for categorical variables (e.g., age groups, sex, MOT, CD4 count
111 groups), frequency and percentages were reported. For trend analysis of categorical variables
112 (including sex, MOT, levels of first CD4 cell counts, and age groups) over the three time periods,
113 we used Chi-square for trend and Fisher exact tests. Kruskal–Wallis H test was used for
114 comparing the distribution of CD4 count between the three time periods. Stata version 17 was
115 used for epidemiological data analysis.

116 **Ethical consideration:**

117 This study protocol was reviewed and approved by the Research Ethics Committee of Kerman
118 University of Medical Science (Ethics ID: IR.KMU. REC.1399. 618).

119

120 **RESULTS:**

121 Between September 1997 and December 2020, 459 HIV-positive cases have been registered in
 122 Kerman VCT. The number of registered cases in time 1 (1997-2004), 2 (2005-2012), and 3
 123 (2013-2020) were 129, 183, and 147 cases, respectively. Of this, 105 cases with a residential
 124 address outside Kerman city and 41 homeless were excluded from the spatial analysis.
 125 Therefore, 313 cases (68.2% of all diagnosed cases) remained in the spatial analysis. However,
 126 analysis of epidemiological patterns was performed on all 459 cases.

127 **Epidemiological pattern**

128 The mean (SD) age was 36.1 (9.0) years overall, 36.7 (8.1) years in men, and 34.4 (11.0) years in
 129 women. The mean age was not significantly different between the three time periods ($P = 0.07$).
 130 However, the mean age of HIV-positive males significantly increased from 34.9 years in 1997-
 131 2004 to 36.6 in 2005-2012 and 39.8 years in 2013-2020 ($P= 0.004$; Table 1).

132

133 Table 1: Epidemiological Characteristics of newly diagnosed cases during three period of study

Ordinal/Nominal Variables	Total (N=459) n (%)	1997-2004 (N=129) n (%)	2005-2012 (N= 183) n (%)	2013-2020 (N=147) n (%)	P-value
Age Groups (Years)					
≤ 5	10 (2.2)	1 (0.8)	1 (0.5)	8 (5.4)	0.01
5 - 14	3 (0.7)	0	2 (1.1)	1 (0.7)	
15 - 24	24 (5.2)	10 (7.8)	6 (3.3)	8 (5.4)	
25 - 34	157 (34.2)	50 (38.8)	75 (41)	32 (21.8)	
35 - 44	196 (42.7)	59 (45.7)	70 (38.3)	67 (45.6)	
45 ≤	69 (15)	9 (7)	29 (15.8)	31 (21.1)	
Modes of transmission					
unsafe injection	222 (48.4)	84 (65.1)	111 (60.7)	27 (18.4)	<0.001
sexual contact	139 (30.3)	15 (11.6)	50 (27.3)	74 (50.3)	
Mother to child	12 (2.6)	1 (0.8)	3 (1.6)	8 (5.4)	
Unknown	86 (18.7)	29 (22.5)	19 (10.4)	38 (25.9)	

Available first CD4 count	278 (50.6)	28 (21.7)	112 (61.2)	138 (93.9)	
First CD4 cell count					
<200	116 (41.8)	12 (42.9)	54 (48.2)	50 (36.2)	
200-350	59 (21.2)	4 (14.3)	20 (17.9)	35 (25.4)	
350-500	37 (13.3)	7 (25.0)	12 (10.7)	18 (13)	0.23
>500	66 (23.7)	5 (17.8)	26 (23.2)	35 (25.4)	
Gender					<0.001
Male	333 (72.5%)	117 (90.7)	140(76.5)	76 (51.7)	
Female	126 (27.5)	12 (9.3)	43 (23.5)	71 (48.3)	
Numerical Variables	Total (N=459)	1997-2004 (N=129)	2005-2012 (N= 183)	2013-2020 (N=147)	P-value
	Mean (SD)	Mean (SD)	Mean (SD)	Mean (SD)	
Age Mean (SD) (Year)					
Female	34.4 (11)	30.1 (11.3)	35.7 (10.8)	34.5 (11.1)	0.37
Male	36.7 (8.1)	34.9 (6.3)	36.6 (8.0)	39.8 (10.1)	0.004
Total	36.1 (9.0)	34.3 (7.1)	36.4 (8.7)	37.4 (10.8)	0.07
CD4 (cells/ml) (Median (IQR)	260 (101 - 484)	250 (78 - 438)	248.5 (108 -480)	281 (109 - 514)	0.53

134

135

136 Most of the 459 cases were male (n=333, 72.5%) (Table 1). The proportion of female cases
 137 significantly increased over time, i.e., from 9.3% in 1997-2004 to 23.5% in 2005-2012 and
 138 48.3% in 2013-2020, ($P < 0.001$). The proportion of HIV infected children under 5 years of age
 139 increased from 0.8% in 1997-2004 to 5.4% in 2013-2020 ($P = 0.01$). Unsafe injection (48.4%)
 140 and unprotected sex (30.3%) were the main MOT overall. The proportion of sexual contact as
 141 the MOT significantly increased from 11.6% in 1997-2004 to 27.3% in 2005-2012 and 50.3% in
 142 2013-2020 ($P < 0.001$). Overall, the median (IQR) of the first CD4 count was 260 (101 - 484)
 143 cells/ml; in 41.7% of cases, the first CD4 count was under 200 cells/ml. The median of the first
 144 CD4 count or proportion of patients with the first CD4 count under 200 cells/ml did not change
 145 significantly over time.

146

147 **Spatial pattern**

148 The NNI for newly diagnosed cases was 0.67 in 1997-2004, 0.57 in 2005-2012, and 0.53 in
149 2013-2020 which was clearly less than one (i.e., an indication of clustered pattern)¹⁴(Figure 1).

150 The result of the Kernel density estimation showed that overall, the distribution of newly
151 diagnosed cases of HIV was more concentrated in the eastern parts of the city (Figure 1). The
152 density map of residents with HIV infection had the highest density (6.01-9 cases per KM²) in
153 the northern and southern edges of the city in 2005-2012.

154 The NNI for PLWIH in 2020 was 0.63 which is suggesting a cluster pattern. HIV density map in
155 2020 (Figure 2) shows a high density in areas corresponding to locations of VCT, DICs, and two
156 mobile clinics.

157

158 **DISCUSSION:**

159 We observed important changes in HIV epidemiology regarding gender, MOT, number of
160 pediatric patients, and density maps over time in Kerman since 1997. The proportion of women,
161 proportion of people infected through sexual contact, proportion of pediatric patients, and the age
162 of diagnosed cases among male individuals increased over the time. We also found more than
163 one in three patients had late diagnosis (CD4 count at diagnosis < 200) which has not been
164 improved over the time. regarding the spatial analysis, we found HIV was clustered in the
165 eastern neighborhoods of the city; density map also showed there is a shift over time with the
166 highest density in the northern and southern edges of the city in 2005-2012. The HIV clusters in
167 2020 were matched with the locations of fixed and mobile related services.

168 The HIV is shifting from men to women and from injection to sexual routes of transmission. In
169 this study, around three-fourth of the reported cases in the whole studied period were male,
170 however, this proportion in the last time period was almost close to one. In total, around half of
171 the reported cases were due to unsafe injection and less than one-third of them were due to
172 sexual contact, however, more than half of the reported cases in the last period was due to sexual
173 contact, and less than one-fifth of the cases were due to unsafe injection. This changing pattern
174 from male to female and from the unsafe injection to sexual contact led to increase the number of
175 reported cases due to mother to child (from one case at the first time period to three cases in the

176 second time period and eight cases in the third period). This pattern is similar to the pattern
177 observed in the national¹⁶ and also in some other cities in Iran, Kermanshah city (for gender)¹⁷
178 and Yazd city (for transmission route).¹⁸ This changing pattern in the gender and MOT could be
179 explained by overall change in sexual behaviors in the country over the last two decades. Having
180 more than two clients among FSW in the last month increased from 46.6% in 2010 to 63.4% in
181 2015;⁵ extramarital sex among youth girls increased from 8% in 2008¹⁹ to more than 13% in
182 2018;²⁰ and injection drug use among FSW increased from 14% in 2011²¹ to 25% in 2015,²².
183 However, there was no significant increase on the condom use among female sex work (condom
184 use in the last month was 26.1% in 2010 and it was 26.3% in 2015).⁵ Reduction of reported
185 cases due to injection can be explained by the drug related harm reduction program in the
186 country which are more accessible and utilized by male drug users. Methadone Maintenance
187 Treatment (MMT) centers increased from 5,893 in 2014 to more than 8,000 centers in 2019. The
188 number of drug users who have received MMT also increased from 476,232 individuals in
189 2011¹⁶ to more than 750,000 individuals in 2019.²³ Moreover, shared injection among PWID
190 decreased from 36.9% in the last month in 2010¹ to 4.1% in the last three months in 2020.³

191 We also found more than three-fourth of diagnosed cases had a CD4 count ≤ 500 at diagnosed
192 time, and more than 40% had a CD4 count <200 at diagnosis. These figures were almost similar
193 during three time periods which shows continuous problem of late diagnosis of majority of the
194 infected cases. In recent years, several interventions implemented in Iran to improve HIV testing.
195 For example, HIV rapid tests have been implemented as a routine part of counseling services in
196 health services and harm reduction settings.²⁴ HIV testing protocol also updated based on WHO
197 guidelines that suggested health care providers to offer HIV testing as part of routine medical
198 care to all people attending their facilities. Also, mobile HIV testing clinics were developed to
199 increase access to HIV testing for vulnerable populations with limited access to healthcare
200 facilities.²⁵ Due these interventions, HIV testing uptake in the last 12 months increased from
201 27% in 2010 to 70.4% in 2015 among FSW,²⁵ and from 24% in 2010 to 71% in 2019 among
202 PWIDs.²³ Despite the overall increase in HIV testing, early detection rates have not been
203 improved significantly.²³ It is not clear how many of those who tested for HIV continue to test
204 themselves frequently as long as they are at risk or belong to a high-risk group. Repeated HIV
205 testing recently (in 2021) added to the national HIV testing guideline, in which recommended
206 members of high-risk groups (including; sexual partners of PLWH, PWID and their sexual

207 partner, FSW, MSM, and prisoners) to be tested for HIV every three months. If implemented
208 properly, it is expected that this strategy increases the chance of diagnosis HIV at early stages of
209 infection. Proportion of key populations at risk for HIV who tested for HIV frequently also need
210 to be monitored by surveys and surveillance efforts.

211 We also found the diagnosed cases were clustered in the eastern neighborhoods of the city. A
212 study conducted in another city of Iran (Kermanshah) showed also spatial clusters of HIV cases
213 ¹⁷. The higher density of HIV diagnosed cases in the eastern parts of the city can be explained by
214 higher concentration of population, lower socioeconomic status, and higher rate of the high-risk
215 behaviors in these neighborhoods. The density of the diagnosed case also shifted over the time
216 with the highest density in the northern and southern edges of the city in 2005-2012. Shifting the
217 highest density in the northern and southern edges of the city can be explained by development
218 of a new transmission cluster in these neighborhoods. This spatial clustering of the cases could
219 help the healthcare providers to focus on these clusters for a better case finding, identifying high
220 risk groups and directing preventive interventions based on high-risk groups in these
221 neighborhoods. We also found fixed and mobile health services are match closely with these
222 clusters in 2020. There is one VCT in the city which has been established in the center of the
223 city and it seems the location of the VCT in terms of access to all hotspots is reasonable. DICs
224 also founded close to the hotspots and approximately cover all areas with a higher density of
225 HIV-infected patients; the overlap between these DICs is low. DICs provide harm reduction
226 services to the vulnerable population in place or by outreach services.

227 We acknowledge the limitations of our study. First, we used HIV registry data in our analysis
228 which had missed data on some of the key variables (CD4 at diagnosis was missing in almost
229 half, MOT was missing in one-fifth, and residential address was missing in about 10% of all
230 cases. Although missing has been improved over time, we were not able to investigate the
231 pattern and reasons for the missing. Second, we were not able to differentiate the heterosexual
232 transmission from homosexual transmission routes due to the way this data were collected and
233 reported. Finally, density map of HIV patients based on residential address may not necessarily
234 match with the risk maps where the sexual or injection risk are taking placed.

235 **CONCLUSION**

236 In this study we used HIV surveillance data from all people diagnosed with HIV in Kerman
237 between 1997 and 2020 to assess the trend in the HIV epidemiological and spatial patterns. Our
238 epidemiological and spatial analysis showed significant change in the HIV epidemiology
239 regarding gender, MOT, pediatric cases, and density maps over the time. Including, increases in
240 the proportion of women, proportion of people infected through sexual contact, pediatric cases,
241 and the age of diagnosed cases among male individuals. This data can help to precise targeting of
242 HIV prevention, testing, treatment and outreach programs in Kerman.

243 **Acknowledgment:**

244 We wish to acknowledge the support from the University of California, San Francisco's
245 International Traineeships in AIDS Prevention Studies (ITAPS), U.S. NIMH, R25MH123256.
246 The content is solely the responsibility of the authors and does not necessarily represent the
247 official views of the National Institutes of Health.

248 **Funding:**

249 This research was supported by a grant from the Kerman University of Medical Science (Grant
250 number: 99000587).

251 **Contributors:**

252 HM contributed to study design, literature review, data cleaning, data analysis, and preparation
253 of early drafts of the paper. AM contributed to study design, analysis interpretation, critical
254 review of the early draft of the paper. MB, contributed to study design, and preparation of early
255 drafts of the paper. ER contributed to data extraction. SE contributed to study designs, and data
256 analysis. HSH, managed the implementation of the study, and contributed in study design, data
257 analysis, preparation of early drafts of the paper. All authors contributed to the writing of the
258 paper and approved the final version.

259 **References:**

- 260 1. Khajehkazemi R, Osooli M, Sajadi L, et al. HIV prevalence and risk behaviours among people who
261 inject drugs in Iran: the 2010 National Surveillance Survey. *Sex Transm Infect* 2013;89(Suppl
262 3):iii29-iii32. doi: 10.1136/sextrans-2013-051204
- 263 2. Esmaeili A, Shokoohi M, Danesh A, et al. Dual unsafe injection and sexual behaviors for HIV infection
264 among people who inject drugs in Iran. *AIDS Behav* 2019;23(6):1594-603. doi: 10.1007/s10461-
265 018-2345-5

- 266 3. Khezri M, Karamouzian M, Sharifi H, et al. Willingness to utilize supervised injection facilities among
267 people who inject drugs in Iran: Findings from 2020 national HIV bio-behavioral surveillance
268 survey. *Int J Drug Policy* 2021;97:103355. doi: 10.1016/j.drugpo.2021.103355
- 269 4. Alipour A, Haghdoost AA, Sajadi L, et al. HIV prevalence and related risk behaviours among female
270 partners of male injecting drugs users in Iran: results of a bio-behavioural survey, 2010. *Sex*
271 *Transm Infect* 2013;89(Suppl 3):iii41-iii44. doi: 10.1136/sextrans-2013-051201
- 272 5. Mirzazadeh A, Shokoohi M, Karamouzian M, et al. Declining trends in HIV and other sexually
273 transmitted infections among female sex workers in Iran could be attributable to reduced drug
274 injection: a cross-sectional study. *Sex Transm Infect* 2020;96(1):68-75. doi: 10.1136/sextrans-
275 2018-053800 [published Online First: 2019/12/15]
- 276 6. Golsoorat F, Pahlaviani M. Prevalence and associated factors of HIV infection among male prisoners in
277 tehran, Iran. *Arch Iran Med* 2017;20(6):356.
- 278 7. Haghdoost AA, Mostafavi E, Mirzazadeh A, et al. Modelling of HIV/AIDS in Iran up to 2014. *J AIDS HIV*
279 *Res* 2011;3(12):231-39. doi: 10.5897/jahr11.030
- 280 8. Soodejani MT, Haghdoost AA, Sedaghat A, et al. The trends of viral hepatitis B and C and HIV
281 infections in donated bloods in Iran between 2003 and 2017. *J Blood Med* 2019;10:435. doi:
282 10.2147/JBM.S229327
- 283 9. SeyedAlinaghi S, Taj L, Mazaheri-Tehrani E, et al. HIV in Iran: onset, responses, and future directions.
284 *AIDS* 2021;35(4):529-42. doi: 10.1097/QAD.0000000000002757
- 285 10. Farhoudi B, Ghalekhani N, Afsar Kazerooni P, et al. Cascade of care in people living with HIV in Iran in
286 2019; how far to reach UNAIDS/WHO targets. *AIDS Care* 2021:1-7. doi:
287 10.1080/09540121.2021.1944603.
- 288 11. Hooshyar Sh, Ranjbar E, Sharifi H, et al. Evaluating the HIV continuum of care and treatment in a low
289 prevalence city in Iran: Kerman HIV-Friendly City initiative. *East Afr J Appl Health Monitor Eval*
290 2018;7
- 291 12. Statistical Center. (2016). Population and Housing Census 2016. Statistical Center of Iran. available at:
292 <http://www.amar.org.ir/Default.aspx?tabid=765>. Access date Sep 23,2021.
- 293 13. Ribeiro AI, Olhero A, Teixeira H, et al. Tools for address georeferencing—limitations and opportunities
294 every public health professional should be aware of. *PLoS One* 2014;9(12):e114130. doi:
295 10.1371/journal.pone.0114130.
- 296 14. Esri, ArcGIS Desktop, ArcMap, Average Nearest Neighbor. available at:
297 [https://desktop.arcgis.com/en/arcmap/10.3/tools/spatial-statistics-toolbox/average-nearest-](https://desktop.arcgis.com/en/arcmap/10.3/tools/spatial-statistics-toolbox/average-nearest-neighbor.htm)
298 [neighbor.htm](https://desktop.arcgis.com/en/arcmap/10.3/tools/spatial-statistics-toolbox/average-nearest-neighbor.htm). Access date Sep 23,2021.
- 299 15. Esri, ArcGIS Pro, How Kernel Density works. available at:
300 [https://desktop.arcgis.com/en/arcmap/10.3/tools/spatial-statistics-toolbox/average-nearest-](https://desktop.arcgis.com/en/arcmap/10.3/tools/spatial-statistics-toolbox/average-nearest-neighbor.htm)
301 [neighbor.htm](https://desktop.arcgis.com/en/arcmap/10.3/tools/spatial-statistics-toolbox/average-nearest-neighbor.htm). Access date Sep 23,2021.
- 302 16. National AIDS Committee Secretariat and Ministry of Health and Medical Education, Islamic Republic
303 of Iran AIDS progress report on monitoring of the United Nations general assembly special
304 session on HIV and AIDS 2015. available at:
305 https://www.unaids.org/sites/default/files/country/documents/IRN_narrative_report_2015.pdf
306 . (Access date: Sep, 2021)
- 307 17. Khademi N, Reshadat S, Zangeneh A, et al. A comparative study of the spatial distribution of HIV
308 prevalence in the metropolis of Kermanshah, Iran, in 1996– 2014 using geographical information
309 systems. *HIV Med* 2017;18(3):220-24. doi: 10.1111/hiv.12416
- 310 18. Lotfi MH, Khajeh M, pedarzadeh M, et al. Epidemiology and Trend of HIV/AIDs in Yazd, a Province in
311 the Center of Iran, 2011-2017. *J Community Health Res* 2018;7(4):214-21. doi:
312 10.18502/jchr.v7i4.267

- 313 19. Hedayati-Moghaddam MR, Eftekharzadeh-Mashhadi I, Fathimoghdam F, et al. Sexual and
314 reproductive behaviors among undergraduate university students in Mashhad, a city in
315 Northeast of Iran. *J Reprod Infertil* 2015;16(1):43.
- 316 20. Mahmoodi M, Mirzaee M, Jahani Y, et al. Age and factors associated with first non-marital sex
317 among Iranian youth. *Sex Cult* 2020;24(3):532-42. doi: 10.1007/s12119-019-09646-y
- 318 21. Mirzazadeh A, Haghdoost AA, Nedjat S, et al. Accuracy of HIV-Related Risk Behaviors Reported by
319 Female Sex Workers, Iran: A Method to Quantify Measurement Bias in Marginalized
320 Populations. *AIDS Behav* 2013;17(2):623-31. doi: 10.1007/s10461-012-0285-z
- 321 22. Shokoohi M, Karamouzian M, Bauer GR, et al. Drug use patterns and associated factors among
322 female sex workers in Iran. *Addict Behav* 2019;90:40-47. doi: 10.1016/j.addbeh.2018.09.037
323 [published Online First: 2018/10/26]
- 324 23. UNIADS. Country progress report - Iran. Global AIDS Monitoring 2020. available at:
325 https://www.unaids.org/sites/default/files/country/documents/IRN_2020_countryreport.pdf
326 (Access date: Sep, 2021)
- 327 24. Jahanbakhsh F, Mostafavi E, Haghdoost A. The potential for HIV self-testing in Iran. *Int J Prev Med*
328 2015;6. doi: 10.4103/2008-7802.170031
- 329 25. Shokoohi M, Noori A, Karamouzian M, et al. Remaining gap in HIV testing uptake among female sex
330 workers in Iran. *AIDS Behav* 2017;21(8):2401-11. doi: 10.1007/s10461-017-1844-0

331

332

333

334

335

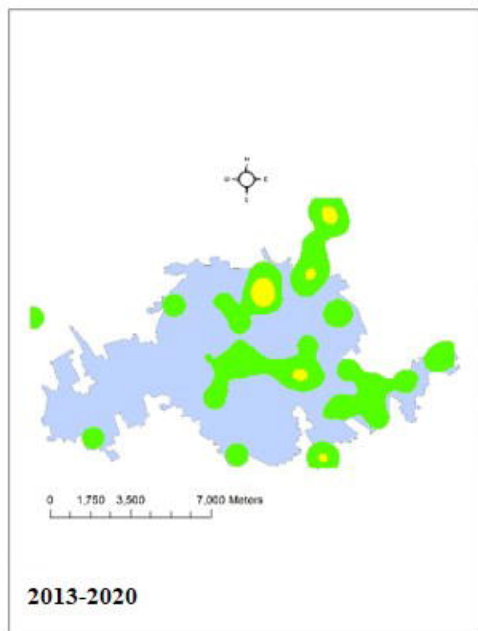
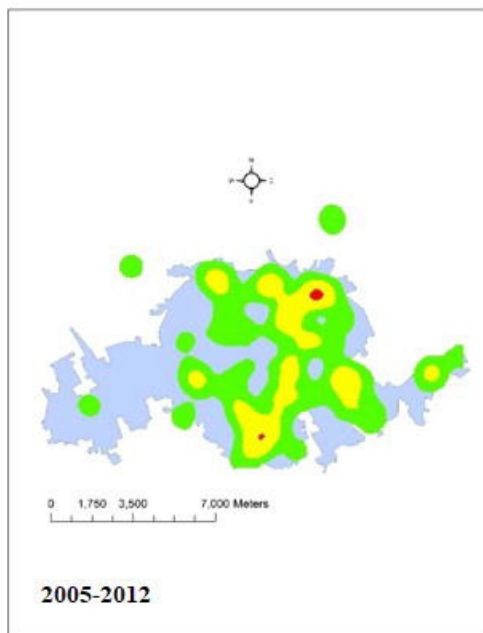
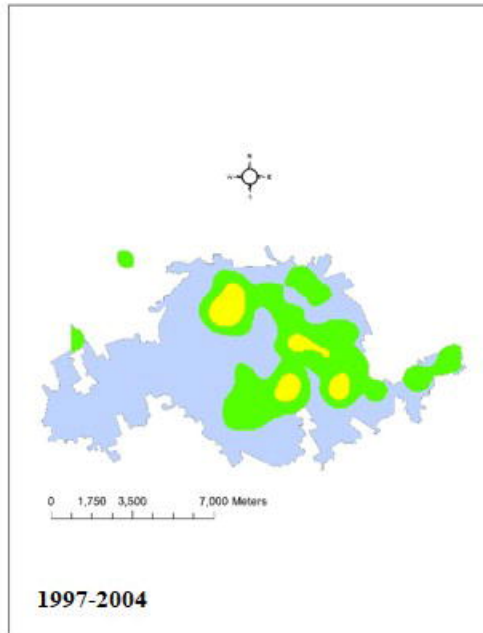
336 Figure 1: spatial distribution of people diagnosed with HIV over the study period in Kerman city

337 Figure 2: spatial distribution of people living with HIV in Kerman city in 2020

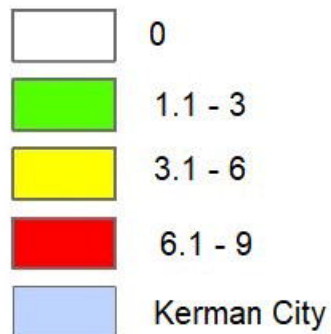
338

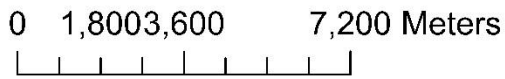
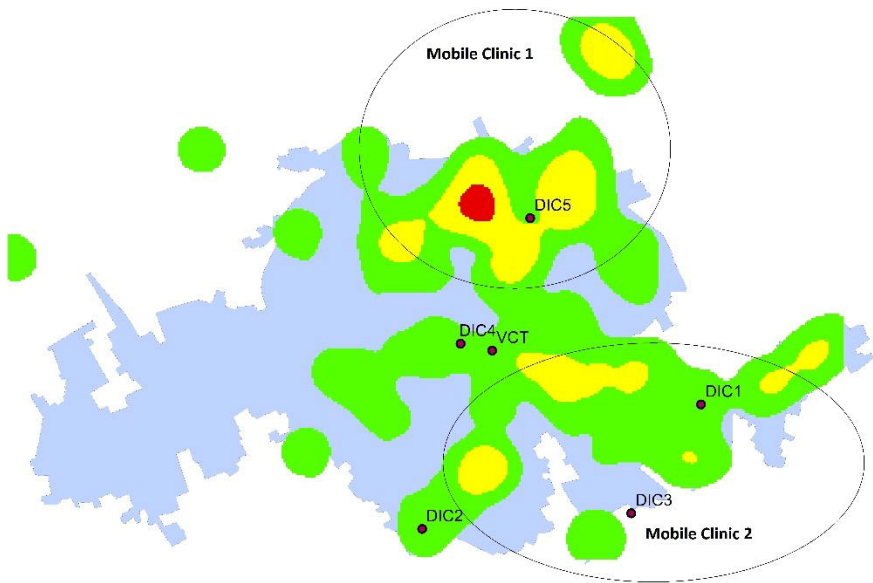
339

340



cases per KM^2





Cases Per KM²

