

1 **Effect of SARS-CoV-2 infection on outcome of cancer patients: A systematic review and meta-analysis**
2 **of studies of unvaccinated patients**

3

4 Giulia Di Felice MD¹, Giovanni Visci MD¹, Federica Teglia MD¹, Marco Angelini MD¹, Paolo Boffetta, MD,
5 MPH^{1,2}

6 1. Department of Medical and Surgical Sciences, University of Bologna, Bologna, Italy

7 2. Stony Brook Cancer Center, Stony Brook University, Stony Brook, NY, USA

8

9 Contact information for corresponding author

10 Paolo Boffetta, MD

11 Department of Medical and Surgical Sciences - University of Bologna

12 Via Massarenti ,9 - Bologna, 40138 Italy

13

14 Email paolo.boffetta@unibo.it

15 Mobile +1(646)401-1292

16

17

18 **Abstract**

19 Background. Since the beginning of the SARS-Cov-2 pandemic, cancer patients affected by COVID-19
20 have been reported to experience poor prognosis; however, a detailed quantification of the effect of
21 SARS-CoV-2 infection on outcome of unvaccinated cancer patients has not been performed.

22
23 Methods. To carry out a systematic review of the studies on outcome of unvaccinated cancer patients
24 infected by Sars-Cov-2, a search string was devised which was used to identify relevant publications in
25 PubMed up to December 31, 2020. We selected three outcomes: mortality, access to ICU, and COVID-19
26 severity or hospitalization. We considered results for all cancers combined as well as for specific cancers.
27 We conducted random-effects meta-analyses of the results, overall and after stratification by region.
28 We also performed sensitivity analyses according to quality score and assessed publication bias.

29 Results. For all cancer combined, the pooled odds ratio (OR) for mortality was 2.32 (95% confidence
30 interval [CI] 1.82-2.94, I^2 for heterogeneity 90.1%, 24 studies), that for ICU admission was 2.39 (95% CI
31 1.90-3.02, I^2 0.0%, 5 studies), that for disease severity or hospitalization was 2.08 (95% CI 1.60-2.72, I^2
32 92.1%, 15 studies). The pooled mortality OR for hematologic neoplasms was 2.14 (95% CI 1.87-2.44, I^2
33 20.8%, 8 studies). Data were insufficient to perform a meta-analysis for other cancers. In the mortality
34 meta-analysis for all cancers, the pooled OR was higher for studies conducted in Asia than studies
35 conducted in Europe or North America. There was no evidence of publication bias.

36 Conclusions. Our meta-analysis indicate a two-fold increased risk of adverse outcomes (mortality, ICU
37 admission and severity of COVID-19) in unvaccinated cancer patients infected with SARS-CoV-2
38 compared to uninfected patients. These results should be compared with studies conducted in
39 vaccinated patients; nonetheless, they argue for special effort to prevent SARS-CoV-2 infection in
40 patients with cancer.

41 Funding. No external funding was obtained.

42
43 Keywords

44 SARS-CoV-2; COVID-19; Cancer; Mortality; ICU; Disease severity; Meta-analysis

45

46

47 **Introduction**

48 Since the emergence of SARS-CoV-2, many studies have been conducted on the outcomes of COVID-19,
49 in order to identify factors associated with a higher death rate and a more severe infection course. Some
50 groups of patients at increased risk of severe COVID-19, morbidity and mortality have been identified,
51 including elderly patients, and those with comorbidities, as hypertension, diabetes, chronic kidney
52 disease or COPD [1]. Cancer patients are also a high-risk group due to their compromised immune
53 systems and vulnerability to infection resulting from their disease and treatments [2].

54 It is generally assumed that cancer patients are at higher risk for severe COVID-19 and death attributed
55 to COVID-19 [3]. However, cancer encompasses a very heterogeneous group of diseases with a diverse
56 range of subtypes and stages. In addition, not all cancers are equal in terms of incidence, prognosis, and
57 treatment. This must be taken into account when the type of cancer is not specified [4]. For this reason,
58 although descriptions and analyses of risk factors, clinical courses, and mortality in cancer patients
59 infected with SARS-CoV-2 have been reported, a quantitative assessment of the effect of COVID-19 in
60 patients with cancer would be important to guide clinical decision-making.

61 We aimed at conducting a systematic review of the epidemiological features of the studies of COVID-19
62 in cancer patients conducted before the implementation of vaccination campaigns, and to provide a
63 quantitative estimate of the risk of cancer patients for severe infection course and COVID-19 mortality,
64 compared to uninfected cancer patients. We decided to restrict our review to studies of unvaccinated
65 patients because (i) they provide the clearest picture of the effect of SARS-CoV-2 infection on outcome
66 of cancer patients, and (ii) the full effect of vaccination might not have been yet captured by available
67 studies.

68

69

70 **Materials and methods**

71 This systematic review was conducted according to the PRISMA statement [5]. We submitted the
72 protocol (available as Supplementary File 1) to the PROSPERO Registry. To carry out the systematic
73 review of the scientific literature, the following string was used for the PubMed database:

74 *(neoplas*[TIAB] OR tumor*[TIAB] OR cancer*[TIAB] OR malignancy[TIAB]) AND (2019 novel*
75 *coronavirus[TIAB] OR COVID-19[TIAB] OR COVID19[TIAB] OR SARS-CoV-2[TIAB] OR 2019-nCoV[TIAB]).*

76 In order restrict the review to studies populations on unvaccinated cancer patients, we included papers
77 published in peer-reviewed journals up to December 31, 2020. We excluded abstracts and non-peer-
78 reviewed reports, articles in languages other than English, and studies including children. We also
79 excluded reviews, meta-analysis and case reports, and studies with less than 50 patients or less than 10
80 events. Finally, we excluded studies in which diagnosis of SARS-Cov-2 infection was not made by PCR
81 testing.

82 The articles were independently reviewed and abstracted by 2 pairs of reviewers [GDF and MA; GV and
83 FT], on the basis of title, abstract and full text; the disagreement between the authors of the reviews
84 (6.1% of all studies) and was resolved through discussion with a fifth reviewer [PB].

85 We selected the following outcomes: mortality, ICU admission, severity of COVID-19 symptoms, and
86 hospitalization: we combined these latter two outcomes because the definition of severity was
87 heterogeneous across studies and the number of available studies was low. We excluded from the
88 review studies addressing the impact of SARS-Cov-2 infection on prevention, diagnosis, and treatment of
89 cancer patients, as well as studies on the oncogenic effect of the virus, e.g., analyses of cancer-related
90 alterations. In addition, we carried out a back-search by inspecting the lists of references of articles
91 selected for the review.

92 Figure 1 shows the flowchart for selection of the studies. Details on the studies retained in each step of
93 the process are available from the authors.

94 We abstracted the following parameters from the articles retained for the review: country, sample size,
95 number of person affected by cancer and by SARS-Cov-2 infection, cancer type and comparison group
96 (patients without cancer or patients with a different type of cancer), outcome, and risk estimate
97 (relative risk or odds ratio [OR]) with 95% confidence interval (CI). If the risk estimate or the CI were not
98 reported in the publication, we calculated them from the raw data, if possible. We also performed a
99 quality assessment (QA) based on a modified version of CASP score [6], that included 10 criteria.

100

101 *Statistical analysis*

102 We conducted random-effects [7] meta-analyses of the risk estimates for the combinations of cancers
103 and outcomes with more than five independent results. We also conducted stratified meta-analyses
104 according to geographic region, to explore potential sources of heterogeneity, that we quantified using
105 the I^2 test [8].

106 To evaluated results stability, we performed sensitivity analyses by quality score and repeated the meta-
107 analysis after excluding one study at a time. We also conducted secondary analyses excluding studies
108 with results calculated on the basis of raw data. Furthermore, we considered the funnel plot and
109 performed the Egger's regression asymmetry test to assess publication bias [9].

110 Finally we conducted a cumulative meta-analysis, based on date of publication of subsequent studies.

111 Analyses were performed by STATA16 program [10], using specific commands metan, metabias, and
112 metafunnel.

113

114

115

116 Results

117 We identified a total of 3488 publications from the literature search, and excluded three because they
118 were duplicates. We screened the titles and abstracts of 3485 articles: we excluded 3145 of them
119 because not relevant (Figure 1), and retained 340 articles as potentially eligible.

120 After reviewing the full-texts, we excluded 303 articles because these did not meet the inclusion criteria,
121 and included the remaining 37 studies in the review: we finally included 35 of them in the quantitative
122 synthesis.

123 Among the 35 studies, 30 reported results for all cancers combined, and 8 for hematologic neoplasms
124 (three of these reported both sets of results). Results for other specific cancers were sparse, and we
125 could not conduct meta-analyses for them. Out of the 35 studies, 13 were from Europe, 11 from North
126 America (all from USA), and 11 from Asia (9 from China and two from Iran). Fifteen studies were
127 considered good quality (CASP score >9.5), nineteen studies were of moderate quality ($9.5 \geq$ CASP score
128 > 6), whereas one was considered inadequate (CASP score \leq 6).

129 Tables 1 and 2 show the details of the studies included in the analysis.

130 Figures 2-3-4 reports the results of the meta-analyses of studies of patients with all cancers combined
131 compared to patients without cancer, for mortality, admission to ICU and hospitalization or severity of
132 COVID-19, respectively. The pooled OR for mortality was 2.32 (95% CI 1.82-2.94, I^2 90.1%), that for ICU
133 admission was 2.39 (95% CI 1.90-3.02, I^2 0.0%), and that for hospitalization/severity of disease was 2.08
134 (95% CI 1.60-2.72, I^2 92.1%).

135

136 In the analysis by geographic region (Figure 2), the association between SARS-CoV-2 infection and
137 mortality in cancer patients was stronger, and less heterogeneous, in studies from Asia (OR 2.92; 95% CI
138 2.13-4.01, I^2 37.8%) than in studies from either Europe (OR 2.37; 95% CI 1.65-3.40; I^2 67.9%) or North
139 America (OR 1.97; 95% CI 1.31-2.97; I^2 95.9%). Too few studies were available on the other outcomes to
140 justify a meta-analysis stratified by region of origin.

141 The cumulative meta-analysis, based on date of publication of subsequent studies of mortality (all type
142 of cancer), showed a stronger association in the studies published before July 2020 than in studies
143 published later.

144 As shown in Supplementary Figure 4, we found no evidence of publication bias in the meta-analysis
145 concerning mortality (p-value of Egger's test 0.67). The number of studies included in the other meta-
146 analyses was too low to yield meaningful results on publication bias.

147

148 In the sensitivity analysis based on QA, the pooled OR of mortality results of studies with acceptable
149 quality was not different from that of results of good-quality studies: OR 2.25 (95% CI 1.73-2.94) vs. OR
150 2.50 (95% CI 1.47-4.26). When we repeated the analysis after excluding one study at a time, we did not
151 identify a major effect of any single study; in particular, the exclusion of the only study that suggested a
152 negative association between SARS-CoV-2 infection and mortality [18] yielded a pooled OR of 2.41 (95%
153 CI 1.95-2.99, I^2 85.5%). The association with mortality was less pronounced in studies whose results

154 were reported by the authors (OR 2.11; 95% CI 1.55-2.87) compared to studies whose results were
155 calculated by us (OR 2.66; 95% CI 1.97-3.60%), although the difference was not statistically significant.
156 [Supplementary Figure 3]

157

158 Figure 5 presents the results of the meta-analysis of eight studies on mortality in patients with
159 hematologic neoplasms. The pooled RR was 2.14 (95% CI 1.87-2.44, I^2 20.8%). Results for other
160 outcomes (admission to ICU, hospitalization, severity of symptoms) were too sparse to conduct a meta-
161 analysis.

162

163

164

165

166

167

168 **Discussion**

169 Since the beginning of the SARS-CoV-2 pandemic, cancer patients affected by COVID-19 have been
170 identified to be at increased risk of poor prognosis, together with other vulnerable categories of patients
171 as those affected by cardiovascular disease, diabetes, kidney injury, obesity, or stroke [46].
172 However, how much SARS-CoV-2 infection actually resulted in more severe outcomes in cancer patients
173 compared to other patients and what caused their worse clinical course has not been fully clarified. In a
174 previous editorial, some of us addressed the issue of the different interactions that COVID-19 and
175 cancer may have [47]. On one hand, it is interesting to study how COVID-19 evolves in patients with
176 cancer, by assessing whether the infection in these patients has a more severe course than in a control
177 group affected by the infection but without cancer. On the other hand, it is important to identify the
178 effects that the pandemic itself has determined in patients with cancer, including reduced access to
179 treatment, delay in diagnosis for postponed screening, increased time between follow-up visits, and
180 change in treatment organization. Acquiring more severe infection could be due to both components.

181
182 In this systematic review and meta-analysis we focused on the effect that SARS-CoV-2 infection had in
183 patients with cancer compared with those without cancer in terms of mortality, ICU access, and severity
184 of COVID-19 (hospitalization or severity of symptoms). We found that patients with cancer and SARS-
185 CoV-2 infection have a two-fold higher risk of experiencing these adverse outcomes compared to non-
186 cancer patients. Our results are in agreement with those of the meta-analysis by Venkatesulu et al. [48],
187 who included a smaller number of studies, mainly from China, and reported an OR of 2.54 (95% CI 1.47-
188 4.42) for mortality in cancer patients with concurrent COVID-19, compared to non-cancer patients.
189 Similar to our results, these authors also reported a stronger association in studies from China than in
190 those from other regions. Our results are also similar to those by Zhang et al. [49], who reported a meta-
191 analysis of five studies from China, yielding a meta-OR of 2.63, with limited heterogeneity; compared to
192 these early reports, we included more studies in our meta-analysis, which should lead to a more robust
193 and precise risk estimate.

194
195 The higher risk of mortality in studies from China compared to those from other countries could be
196 explained by the fact that some of the studies from China were conducted during the very early phase of
197 the infection, when diagnosis and treatment for SARS-CoV-2 might have been delayed, resulting in
198 higher death rate. This interpretation is reinforced by the results of the cumulative meta-analysis, that
199 showed a stronger effect detected in the early studies compared to later studies.

200
201 Our summary results on risk of ICU admission and severity of COVID-19 indicated a somehow weaker
202 association than that reported by other authors. An early meta-analysis reported a 3-fold increase for
203 ICU admission, an almost 4-fold increase for a SARS-CoV-2 infection classified as severe, and a 5-fold
204 increase in being intubated [51]. The fact that our values are lower might be explained by the inclusion
205 of studies conducted when management of cancer patients with SARS-CoV-2 infection was more
206 effective.

207
208 Immunosuppression and impaired T-cell response due to therapies may underlie the worse outcome in
209 hematologic cancer diseases, even if some authors suggested that the attenuated inflammatory

210 response in hematological patients can protect from severe COVID-19 morbidity [52]. The results of our
211 meta-analysis confirm a higher mortality from COVID in patients with haematological neoplasms
212 compared to non-neoplastic patients, with limited heterogeneity, with a pooled risk estimate similar to
213 that for all cancers combined.

214

215 We were not able to derive pooled results for other specific cancers. Results for patients with
216 hematologic and solid neoplasms were compared in some individual studies. In particular, Desai et al.
217 [53] reported a higher mortality in the former group, but the comparison was not adjusted for age and
218 type of therapy.

219

220 Although our study provides the most precise measure to date of the effect of COVID-19 in cancer
221 patients, it suffers from some limitations. Many studies included in our analysis did not provide results
222 adjusted for important determinants such as sex, age, comorbidities, and therapy. As mentioned above,
223 we were not able to analyse specific cancers other than hematologic neoplasms, because results were
224 too sparse.

225

226 In conclusion our meta-analysis confirms, by giving a more precise and accurate estimation, evidence to
227 the hypothesis of an association between all type of cancer (and more specific hematologic neoplasm)
228 and a worst outcome on Mortality, ICU admission and Severity of COVID-19.

229 Future studies will be able to better analyse this association for the different subtypes of cancer too.

230 Furthermore, they will eventually be able to evaluate whether the difference among vaccinated
231 population is reduced.

232

233

234 **Declarations**

235

236 Funding: no external funding was obtained

237

238 Conflict of interests: Authors declared no conflicts of interest.

239

240 Availability of data and material: all the primary data are available from the first Author.

241

242 Code availability: all the software code is available from the first Author.

243

244 Author's contributions:

245 - PB, GDF and GV designed the study

246 - GDF, GV, FT, MA identified studies and extracted the data

247 - GDF, GV and PB conducted statistical analysis and drafted the manuscript

248 - All Authors reviewed the manuscript

249

250 References

- 251 1. X. Fang et al., «Epidemiological, comorbidity factors with severity and prognosis of COVID-19: a systematic
252 review and meta-analysis», *Aging*, vol. 12, n. 13, pagg. 12493–12503, lug. 2020, doi: 10.18632/aging.103579
- 253 2. M. Kamboj e K. A. Sepkowitz, «Nosocomial infections in patients with cancer», *Lancet Oncol.*, vol. 10, n. 6, pagg.
254 589–597, giu. 2009, doi: 10.1016/S1470-2045(09)70069-5
- 255 3. M. M. Rüttrich et al., «COVID-19 in cancer patients: clinical characteristics and outcome-an analysis of the
256 LEOSS registry», *Ann. Hematol.*, vol. 100, n. 2, pagg. 383–393, feb. 2021, doi: 10.1007/s00277-020-04328-4
- 257 4. L. Y. W. Lee et al., «COVID-19 prevalence and mortality in patients with cancer and the effect of primary
258 tumour subtype and patient demographics: a prospective cohort study», *Lancet Oncol.*, vol. 21, n. 10, pagg. 1309–
259 1316, ott. 2020, doi: 10.1016/S1470-2045(20)30442-3
- 260 5. Moher D on PROSPERO registry, Liberati A, Tetzlaff J, Altman DG; PRISMA Group. Preferred reporting items for
261 systematic reviews and meta-analyses: the PRISMA statement. *BMJ*. 2009;339:b2535
- 262 6. Critical Appraisal Skills Programme (2018a). CASP Cohort Study Checklist. [online] Available at: [https://casp-](https://casp-uk.net/casp-tools-checklists/)
263 [uk.net/casp-tools-checklists/](https://casp-uk.net/casp-tools-checklists/). Accessed: 27 March 2019
- 264 7. DerSimonian R, Laird N. Meta-analysis in clinical trials. *Control Clin Trials*. 1986;7:177-88
- 265 8. Higgins JP, Thompson SG. Quantifying heterogeneity in a meta-analysis. *Stat Med*. 2002 Jun 15;21(11):1539-58.
266 doi: 10.1002/sim.1186. PMID: 12111919.
- 267 9. Egger M, Davey Smith G, Schneider M, Minder C. Bias in meta-analysis detected by a simple, graphical test.
268 *BMJ*. 1997;315:629-34
- 269 10. StataCorp. 2019. Stata Statistical Software: Release 16. College Station, TX: StataCorp LLC.
- 270 11. Dai M, Liu D, Liu M, Zhou F, Li G, Chen Z, Zhang Z, You H, Wu M, Zheng Q, Xiong Y, Xiong H, Wang C, Chen C,
271 Xiong F, Zhang Y, Peng Y, Ge S, Zhen B, Yu T, Wang L, Wang H, Liu Y, Chen Y, Mei J, Gao X, Li Z, Gan L, He C, Li Z, Shi
272 Y, Qi Y, Yang J, Tenen DG, Chai L, Mucci LA, Santillana M, Cai H. Patients with Cancer Appear More Vulnerable to
273 SARS-CoV-2: A Multicenter Study during the COVID-19 Outbreak. *Cancer Discov*. 2020 Jun;10(6):783-791. doi:
274 10.1158/2159-8290.CD-20-0422. Epub 2020 Apr 28. PMID: 32345594; PMCID: PMC7309152.
- 275 12. Haase N, Plovsing R, Christensen S, Poulsen LM, Brøchner AC, Rasmussen BS, Helleberg M, Jensen JUS,
276 Andersen LPK, Siegel H, Ibsen M, Jørgensen V, Winding R, Iversen S, Pedersen HP, Madsen J, Sølling C, Garcia RS,
277 Michelsen J, Mohr T, Mannering A, Espelund US, Bundgaard H, Kirkegaard L, Smitt M, Buck DL, Ribergaard NE,
278 Pedersen HS, Christensen BV, Perner A. Characteristics, interventions, and longer term outcomes of COVID-19 ICU
279 patients in Denmark-A nationwide, observational study. *Acta Anaesthesiol Scand*. 2021 Jan;65(1):68-75. doi:
280 10.1111/aas.13701. Epub 2020 Oct 3. PMID: 32929715.
- 281 13. Meng Y, Lu W, Guo E, Liu J, Yang B, Wu P, Lin S, Peng T, Fu Y, Li F, Wang Z, Li Y, Xiao R, Liu C, Huang Y, Lu F, Wu
282 X, You L, Ma D, Sun C, Wu P, Chen G. Cancer history is an independent risk factor for mortality in hospitalized
283 COVID-19 patients: a propensity score-matched analysis. *J Hematol Oncol*. 2020 Jun 10;13(1):75. doi:
284 10.1186/s13045-020-00907-0. PMID: 32522278; PMCID: PMC7286218.
- 285 14. Sun L, Surya S, Le AN, Desai H, Doucette A, Gabriel P, Ritchie M, Rader D, Maillard I, Bange E, Huang A,
286 Vonderheide RH, DeMichele A, Verma A, Mamtani R, Maxwell KN. Rates of COVID-19-related Outcomes in Cancer

- 287 compared to non-Cancer Patients. medRxiv [Preprint]. 2020 Aug 15:2020.08.14.20174961. doi:
288 10.1101/2020.08.14.20174961. Update in: JNCI Cancer Spectr. 2021 Jan 21;5(1):pkaa120. PMID: 32817956;
289 PMID: PMC7430598.
- 290 15. Nogueira PJ, de Araújo Nobre M, Costa A, Ribeiro RM, Furtado C, Bacelar Nicolau L, Camarinha C, Luís M,
291 Abrantes R, Vaz Carneiro A. The Role of Health Preconditions on COVID-19 Deaths in Portugal: Evidence from
292 Surveillance Data of the First 20293 Infection Cases. J Clin Med. 2020 Jul 24;9(8):2368. doi: 10.3390/jcm9082368.
293 PMID: 32722159; PMID: PMC7464004.
- 294 16. Zandkarimi E, Moradi G, Mohsenpour B. The Prognostic Factors Affecting the Survival of Kurdistan Province
295 COVID-19 Patients: A Cross-sectional Study From February to May 2020. Int J Health Policy Manag. 2020 Aug 22.
296 doi: 10.34172/ijhpm.2020.155. Epub ahead of print. PMID: 32861230.
- 297 17. Zhao Y, Nie HX, Hu K, Wu XJ, Zhang YT, Wang MM, Wang T, Zheng ZS, Li XC, Zeng SL. Abnormal immunity of
298 non-survivors with COVID-19: predictors for mortality. Infect Dis Poverty. 2020 Aug 3;9(1):108. doi:
299 10.1186/s40249-020-00723-1. PMID: 32746940; PMID: PMC7396941.
- 300 18. Harrison SL, Fazio-Eynullayeva E, Lane DA, Underhill P, Lip GYH. Comorbidities associated with mortality in
301 31,461 adults with COVID-19 in the United States: A federated electronic medical record analysis. PLoS Med. 2020
302 Sep 10;17(9):e1003321. doi: 10.1371/journal.pmed.1003321. PMID: 32911500; PMID: PMC7482833.
- 303 19. Gupta S, Hayek SS, Wang W, Chan L, Mathews KS, Melamed ML, Brenner SK, Leonberg-Yoo A, Schenck EJ,
304 Radbel J, Reiser J, Bansal A, Srivastava A, Zhou Y, Sutherland A, Green A, Shehata AM, Goyal N, Vijayan A, Velez
305 JCQ, Shaefi S, Parikh CR, Arunthamakun J, Athavale AM, Friedman AN, Short SAP, Kibbelaar ZA, Abu Omar S,
306 Admon AJ, Donnelly JP, Gershengorn HB, Hernán MA, Semler MW, Leaf DE; STOP-COVID Investigators. Factors
307 Associated With Death in Critically Ill Patients With Coronavirus Disease 2019 in the US. JAMA Intern Med. 2020
308 Nov 1;180(11):1436-1447. doi: 10.1001/jamainternmed.2020.3596. Erratum in: JAMA Intern Med. 2020 Nov
309 1;180(11):1555. Erratum in: JAMA Intern Med. 2021 Aug 1;181(8):1144. PMID: 32667668; PMID: PMC7364338.
- 310 20. Ganatra S, Dani SS, Redd R, Rieger-Christ K, Patel R, Parikh R, Asnani A, Bang V, Shreyder K, Brar SS, Singh A,
311 Kazi DS, Guha A, Hayek SS, Barac A, Gunturu KS, Zarwan C, Mosenthal AC, Yunus SA, Kumar A, Patel JM, Patten
312 RD, Venesy DM, Shah SP, Resnic FS, Nohria A, Baron SJ. Outcomes of COVID-19 in Patients With a History of
313 Cancer and Comorbid Cardiovascular Disease. J Natl Compr Canc Netw. 2020 Nov 3:1-10. doi:
314 10.6004/jnccn.2020.7658. Epub ahead of print. PMID: 33142266.
- 315 21. Westblade LF, Brar G, Pinheiro LC, Paidoussis D, Rajan M, Martin P, Goyal P, Sepulveda JL, Zhang L, George G,
316 Liu D, Whittier S, Plate M, Small CB, Rand JH, Cushing MM, Walsh TJ, Cooke J, Safford MM, Loda M, Satlin MJ.
317 SARS-CoV-2 Viral Load Predicts Mortality in Patients with and without Cancer Who Are Hospitalized with COVID-
318 19. Cancer Cell. 2020 Nov 9;38(5):661-671.e2. doi: 10.1016/j.ccell.2020.09.007. Epub 2020 Sep 15. PMID:
319 32997958; PMID: PMC7492074.
- 320 22. Wang B, Van Oekelen O, Mouhieddine TH, Del Valle DM, Richter J, Cho HJ, Richard S, Chari A, Gnjjatic S, Merad
321 M, Jagannath S, Parekh S, Madduri D. A tertiary center experience of multiple myeloma patients with COVID-19:
322 lessons learned and the path forward. J Hematol Oncol. 2020 Jul 14;13(1):94. doi: 10.1186/s13045-020-00934-x.
323 PMID: 32664919; PMID: PMC7359431.
- 324 23. Cherri S, Lemmers DHL, Noventa S, Abu Hilal M, Zaniboni A. Outcome of oncological patients admitted with
325 COVID-19: experience of a hospital center in northern Italy. Ther Adv Med Oncol. 2020 Sep
326 30;12:1758835920962370. doi: 10.1177/1758835920962370. PMID: 33062065; PMID: PMC7533930.

- 327 24. Görgülü Ö, Duyan M. Effects of Comorbid Factors on Prognosis of Three Different Geriatric Groups with
328 COVID-19 Diagnosis. *SN Compr Clin Med*. 2020 Nov 18;1-12. doi: 10.1007/s42399-020-00645-x. Epub ahead of
329 print. PMID: 33225222; PMCID: PMC7671936.
- 330 25. Jiménez E, Fontán-Vela M, Valencia J, Fernandez-Jimenez I, Álvaro-Alonso EA, Izquierdo-García E, Lazaro Cebas
331 A, Gallego Ruiz-Elvira E, Troya J, Tebar-Martinez AJ, Garcia-Marina B, Peña-Lillo G, Abad-Motos A, Macaya L, Ryan
332 P, Pérez-Butragueño M; COVID@HUIL Working Group; COVID@HUIL Working Group. Characteristics,
333 complications and outcomes among 1549 patients hospitalised with COVID-19 in a secondary hospital in Madrid,
334 Spain: a retrospective case series study. *BMJ Open*. 2020 Nov 10;10(11):e042398. doi: 10.1136/bmjopen-2020-
335 042398. PMID: 33172949; PMCID: PMC7656887.
- 336 26. Thompson JV, Meghani NJ, Powell BM, Newell I, Craven R, Skilton G, Bagg LJ, Yaqoob I, Dixon MJ, Evans EJ,
337 Kambele B, Rehman A, Ng Man Kwong G. Patient characteristics and predictors of mortality in 470 adults
338 admitted to a district general hospital in England with Covid-19. *Epidemiol Infect*. 2020 Nov 24;148:e285. doi:
339 10.1017/S0950268820002873. PMID: 33228824; PMCID: PMC7729176.
- 340 27. Li Q, Chen L, Li Q, He W, Yu J, Chen L, Cao Y, Chen W, Di Wu, Dong F, Cai L, Ran Q, Li L, Liu Q, Ren W, Gao F,
341 Wang H, Chen Z, Gale RP, Hu Y. Cancer increases risk of in-hospital death from COVID-19 in persons <65 years and
342 those not in complete remission. *Leukemia*. 2020 Sep;34(9):2384-2391. doi: 10.1038/s41375-020-0986-7. Epub
343 2020 Jul 20. PMID: 32690880; PMCID: PMC7371786.
- 344 28. Shoumariyeh K, Biavasco F, Ihorst G, Rieg S, Nieters A, Kern WV, Miething C, Duyster J, Engelhardt M, Bertz H.
345 Covid-19 in patients with hematological and solid cancers at a Comprehensive Cancer Center in Germany. *Cancer*
346 *Med*. 2020 Nov;9(22):8412-8422. doi: 10.1002/cam4.3460. Epub 2020 Sep 15. PMID: 32931637; PMCID:
347 PMC7666742.
- 348 29. Mehta V, Goel S, Kabarriti R, Cole D, Goldfinger M, Acuna-Villaorduna A, Pradhan K, Thota R, Reissman S,
349 Sparano JA, Gartrell BA, Smith RV, Ohri N, Garg M, Racine AD, Kalnicki S, Perez-Soler R, Halmos B, Verma A. Case
350 Fatality Rate of Cancer Patients with COVID-19 in a New York Hospital System. *Cancer Discov*. 2020 Jul;10(7):935-
351 941. doi: 10.1158/2159-8290.CD-20-0516. Epub 2020 May 1. PMID: 32357994; PMCID: PMC7334098.
- 352 30. Rogado J, Obispo B, Pangua C, Serrano-Montero G, Martín Marino A, Pérez-Pérez M, López-Alfonso A, Gullón
353 P, Lara MÁ. Covid-19 transmission, outcome and associated risk factors in cancer patients at the first month of the
354 pandemic in a Spanish hospital in Madrid. *Clin Transl Oncol*. 2020 Dec;22(12):2364-2368. doi: 10.1007/s12094-
355 020-02381-z. Epub 2020 May 25. PMID: 32449128; PMCID: PMC7246222.
- 356 31. Brar G, Pinheiro LC, Shusterman M, Swed B, Reshetnyak E, Soroka O, Chen F, Yamshon S, Vaughn J, Martin P,
357 Paul D, Hidalgo M, Shah MA. COVID-19 Severity and Outcomes in Patients With Cancer: A Matched Cohort Study.
358 *J Clin Oncol*. 2020 Nov 20;38(33):3914-3924. doi: 10.1200/JCO.20.01580. Epub 2020 Sep 28. PMID: 32986528;
359 PMCID: PMC7676890.
- 360 32. Zhang B, Yu Y, Hubert SM, Zhang Y, Lu J, Liu S, Xie F, Zhao L, Lei X, Deng W, Chen J, Li Y. Prognostic Value of
361 Pro-Inflammatory Neutrophils and C-Reactive Protein in Cancer Patient With Coronavirus Disease 2019: A Multi-
362 Center, Retrospective Study. *Front Pharmacol*. 2020 Oct 22;11:576994. doi: 10.3389/fphar.2020.576994. PMID:
363 33192519; PMCID: PMC7656194.
- 364 33. Sorouri M, Kasaeian A, Mojtabavi H, Radmard AR, Kolahdoozan S, Anushiravani A, Khosravi B, Pourabbas SM,
365 Eslahi M, Sirusbakht A, Khodabakhshi M, Motamedi F, Azizi F, Ghanbari R, Rajabi Z, Sima AR, Rad S, Abdollahi M.
366 Clinical characteristics, outcomes, and risk factors for mortality in hospitalized patients with COVID-19 and cancer

- 367 history: a propensity score-matched study. *Infect Agent Cancer*. 2020 Dec 17;15(1):74. doi: 10.1186/s13027-020-
368 00339-y. PMID: 33334375; PMCID: PMC7745169.
- 369 34. Lunski MJ, Burton J, Tawagi K, Maslov D, Simenson V, Barr D, Yuan H, Johnson D, Matrana M, Cole J, Larned Z,
370 Moore B. Multivariate mortality analyses in COVID-19: Comparing patients with cancer and patients without
371 cancer in Louisiana. *Cancer*. 2021 Jan 15;127(2):266-274. doi: 10.1002/cncr.33243. Epub 2020 Oct 28. PMID:
372 33112411.
- 373 35. Atalla E, Kalligeros M, Giampaolo G, Mylona EK, Shehadeh F, Mylonakis E. Readmissions among patients with
374 COVID-19. *Int J Clin Pract*. 2021 Mar;75(3):e13700. doi: 10.1111/ijcp.13700. Epub 2020 Oct 12. PMID: 32894801.
- 375 36. Cheng WT, Ke YH, Yang GY, Sun H, Chen Y, Ying RY, Zeng XH, Shen D, Tang KJ, Xu K, Yu F. Analysis of clinical
376 features of COVID-19 in cancer patients. *Acta Oncol*. 2020 Nov;59(11):1393-1396. doi:
377 10.1080/0284186X.2020.1810313. Epub 2020 Aug 28. PMID: 32857662.
- 378 37. Song J, Zeng M, Wang H, Qin C, Hou HY, Sun ZY, Xu SP, Wang GP, Guo CL, Deng YK, Wang ZC, Ma J, Pan L, Liao
379 B, Du ZH, Feng QM, Liu Y, Xie JG, Liu Z. Distinct effects of asthma and COPD comorbidity on disease expression
380 and outcome in patients with COVID-19. *Allergy*. 2021 Feb;76(2):483-496. doi: 10.1111/all.14517. Epub 2020 Aug
381 11. PMID: 32716553.
- 382 38. Liang W, Liang H, Ou L, Chen B, Chen A, Li C, Li Y, Guan W, Sang L, Lu J, Xu Y, Chen G, Guo H, Guo J, Chen Z,
383 Zhao Y, Li S, Zhang N, Zhong N, He J; China Medical Treatment Expert Group for COVID-19. Development and
384 Validation of a Clinical Risk Score to Predict the Occurrence of Critical Illness in Hospitalized Patients With COVID-
385 19. *JAMA Intern Med*. 2020 Aug 1;180(8):1081-1089. doi: 10.1001/jamainternmed.2020.2033. PMID: 32396163;
386 PMCID: PMC7218676.
- 387 39. Bauer AZ, Gore R, Sama SR, Rosiello R, Garber L, Sundaresan D, McDonald A, Arruda P, Kriebel D.
388 Hypertension, medications, and risk of severe COVID-19: A Massachusetts community-based observational study.
389 *J Clin Hypertens (Greenwich)*. 2021 Jan;23(1):21-27. doi: 10.1111/jch.14101. Epub 2020 Nov 21. PMID: 33220171;
390 PMCID: PMC7753489.
- 391 40. Tian J, Yuan X, Xiao J, Zhong Q, Yang C, Liu B, Cai Y, Lu Z, Wang J, Wang Y, Liu S, Cheng B, Wang J, Zhang M,
392 Wang L, Niu S, Yao Z, Deng X, Zhou F, Wei W, Li Q, Chen X, Chen W, Yang Q, Wu S, Fan J, Shu B, Hu Z, Wang S,
393 Yang XP, Liu W, Miao X, Wang Z. Clinical characteristics and risk factors associated with COVID-19 disease severity
394 in patients with cancer in Wuhan, China: a multicentre, retrospective, cohort study. *Lancet Oncol*. 2020
395 Jul;21(7):893-903. doi: 10.1016/S1470-2045(20)30309-0. Epub 2020 May 29. PMID: 32479790; PMCID:
396 PMC7259911.
- 397 41. Yigenoglu TN, Ata N, Altuntas F, Basci S, Dal MS, Korkmaz S, Namdaroglu S, Basturk A, Hacibekiroglu T, Dogu
398 MH, Berber İ, Dal K, Erkurt MA, Turgut B, Ulgu MM, Celik O, Imrat E, Birinci S. The outcome of COVID-19 in
399 patients with hematological malignancy. *J Med Virol*. 2021 Feb;93(2):1099-1104. doi: 10.1002/jmv.26404. Epub
400 2020 Aug 26. PMID: 32776581; PMCID: PMC7436524.
- 401 42. Shah V, Ko Ko T, Zuckerman M, Vidler J, Sharif S, Mehra V, Gandhi S, Kuhn A, Yallop D, Avenoso D, Rice C,
402 Sanderson R, Sarma A, Marsh J, de Lavallade H, Krishnamurthy P, Patten P, Benjamin R, Potter V, Ceesay MM,
403 Mufti GJ, Norton S, Pagliuca A, Galloway J, Kulasekararaj AG. Poor outcome and prolonged persistence of SARS-
404 CoV-2 RNA in COVID-19 patients with haematological malignancies; King's College Hospital experience. *Br J*
405 *Haematol*. 2020 Sep;190(5):e279-e282. doi: 10.1111/bjh.16935. Epub 2020 Aug 10. PMID: 32526039; PMCID:
406 PMC7307054.

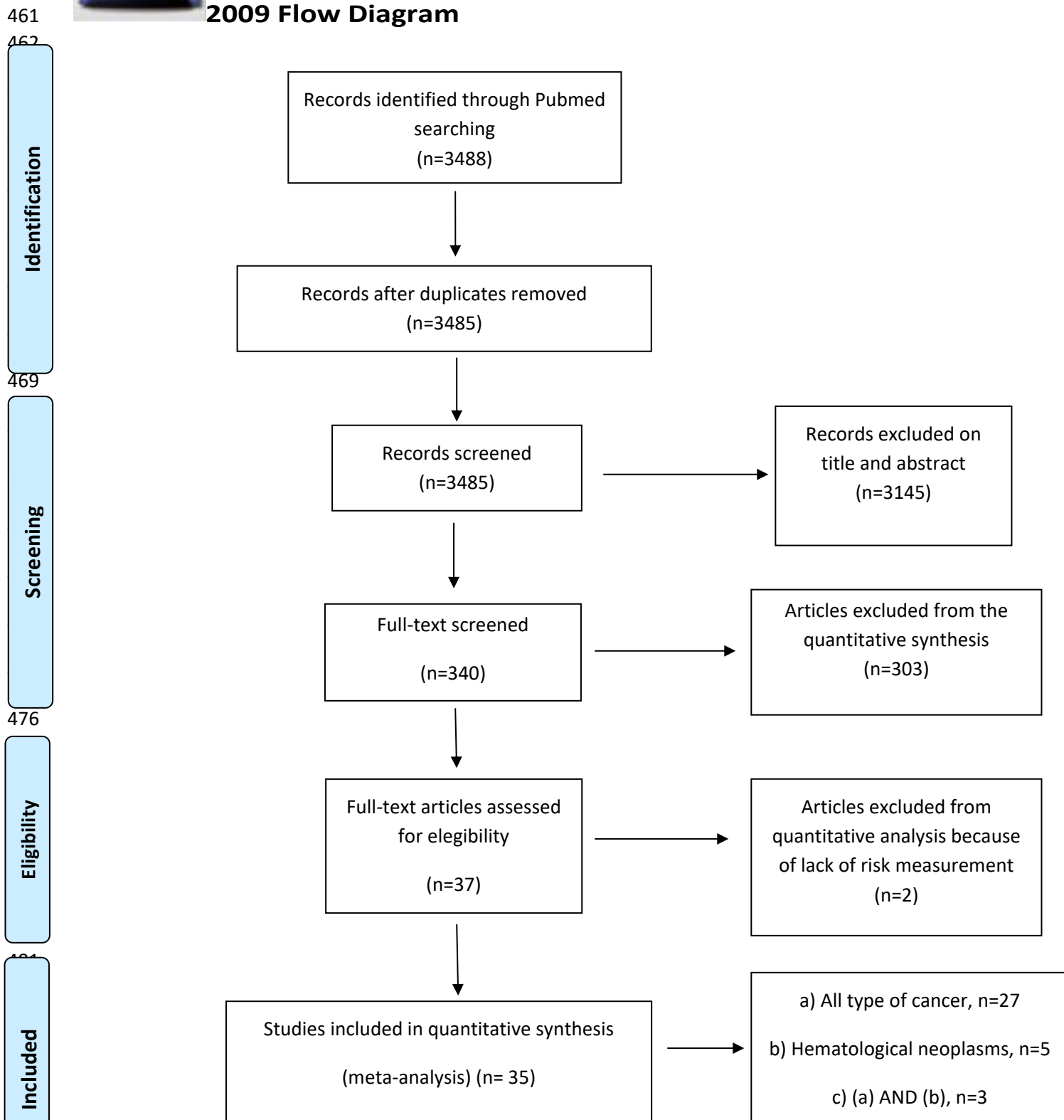
- 407 43. Sanchez-Pina JM, Rodríguez Rodríguez M, Castro Quismondo N, Gil Manso R, Colmenares R, Gil Alos D,
408 Paciello ML, Zafra D, Garcia-Sanchez C, Villegas C, Cuellar C, Carreño-Tarragona G, Zamanillo I, Poza M, Iñiguez R,
409 Gutierrez X, Alonso R, Rodríguez A, Folgueira MD, Delgado R, Ferrari JM, Lizasoain M, Aguado JM, Ayala R,
410 Martinez-Lopez J, Calbacho M. Clinical course and risk factors for mortality from COVID-19 in patients with
411 haematological malignancies. *Eur J Haematol.* 2020 Nov;105(5):597-607. doi: 10.1111/ejh.13493. Epub 2020 Aug
412 11. PMID: 32710500.
- 413 44. Passamonti F, Cattaneo C, Arcaini L, Bruna R, Cavo M, Merli F, Angelucci E, Krampera M, Cairoli R, Della Porta
414 MG, Fracchiolla N, Ladetto M, Gambacorti Passerini C, Salvini M, Marchetti M, Lemoli R, Molteni A, Busca A,
415 Cuneo A, Romano A, Giuliani N, Galimberti S, Corso A, Morotti A, Falini B, Billio A, Gherlinzoni F, Visani G, Tisi MC,
416 Tafuri A, Tosi P, Lanza F, Massaia M, Turrini M, Ferrara F, Gurrieri C, Vallisa D, Martelli M, Derenzini E, Guarini A,
417 Conconi A, Cuccaro A, Cudillo L, Russo D, Ciambelli F, Scattolin AM, Luppi M, Selleri C, Ortu La Barbera E,
418 Ferrandina C, Di Renzo N, Olivieri A, Bocchia M, Gentile M, Marchesi F, Musto P, Federici AB, Candoni A, Venditti
419 A, Fava C, Pinto A, Galieni P, Rigacci L, Armiento D, Pane F, Oberti M, Zappasodi P, Visco C, Franchi M, Grossi PA,
420 Bertù L, Corrao G, Pagano L, Corradini P; ITA-HEMA-COV Investigators. Clinical characteristics and risk factors
421 associated with COVID-19 severity in patients with haematological malignancies in Italy: a retrospective,
422 multicentre, cohort study. *Lancet Haematol.* 2020 Oct;7(10):e737-e745. doi: 10.1016/S2352-3026(20)30251-9.
423 Epub 2020 Aug 13. PMID: 32798473; PMCID: PMC7426107.
- 424 45. Cattaneo C, Daffini R, Pagani C, Salvetti M, Mancini V, Borlenghi E, D'Adda M, Oberti M, Paini A, De Ciuceis C,
425 Barbullushi K, Cancelli V, Belotti A, Re A, Motta M, Peli A, Bianchetti N, Anastasia A, Dalceglio D, Roccaro AM,
426 Tucci A, Cairoli R, Muiesan ML, Rossi G. Clinical characteristics and risk factors for mortality in hematologic
427 patients affected by COVID-19. *Cancer.* 2020 Dec 1;126(23):5069-5076. doi: 10.1002/cncr.33160. Epub 2020 Sep
428 10. PMID: 32910456.
- 429 46. Hu Y, Sun J, Dai Z, Deng H, Li X, Huang Q, Wu Y, Sun L, Xu Y. Prevalence and severity of corona virus disease
430 2019 (COVID-19): A systematic review and meta-analysis. *J Clin Virol.* 2020 Jun;127:104371. doi:
431 10.1016/j.jcv.2020.104371. Epub 2020 Apr 14
- 432 47. Hainault P and Boffetta P-SARS-Cov2, COVID19 and Cancer: three research questions casting a long shadow-
433 Editorial for Current Opinion in Oncology – Cancer Biology section
- 434 48. Venkatesulu BP, Chandrasekar VT, Girdhar P, Advani P, Sharma A, Elumalai T, Hsieh C, Elghazawy HI, Verma V,
435 Krishnan S. A systematic review and meta-analysis of cancer patients affected by a novel coronavirus. medRxiv
436 [Preprint]. 2020 May 29:2020.05.27.20115303. doi: 10.1101/2020.05.27.20115303. PMID: 32511470; PMCID:
437 PMC7265691
- 438 49. Zhang Y, Han H, Tian Y, Dong J, Yu Y, Kang Y, Xing L, Lian R, Zhang R, Xie D. Impact of cancer on mortality and
439 severity of corona virus disease 2019: A protocol for systematic review and meta-analysis. *Medicine (Baltimore).*
440 2020 Oct 30;99(44):e23005
- 441 50. Patel R, Park J, Shah A, Saif MW. COVID-19 and Cancer Patients. *Cancer Med J.* 2020;3(1):40-48. Epub 2020
442 Apr
- 443 51. ElGohary GM, Hashmi S, Styczynski J, et al. The risk and prognosis of COVID-19 infection in cancer patients: A
444 systematic review and meta-analysis [published online ahead of print, 2020 Jul 30]. *Hematol Oncol Stem Cell*
445 *Ther.* 2020;S1658-3876(20)30122-9. doi:10.1016/j.hemonc.2020.07.005

- 446 52. Vijenthira A, Gong IY, Fox TA, Booth S, Cook G, Fattizzo B, Martín-Moro F, Razanamahery J, Riches JC, Zwicker
447 J, Patell R, Vekemans MC, Scarfò L, Chatzikonstantinou T, Yildiz H, Lattenist R, Mantzaris I, Wood WA, Hicks LK.
448 Outcomes of patients with hematologic malignancies and COVID-19: a systematic review and meta-analysis of
449 3377 patients. *Blood*. 2020 Dec 17;136(25):2881-2892
- 450 53. Desai, A, Gupta, R, Advani, S, Ouellette, L, Kuderer, NM, Lyman, GH, Li, A. Mortality in hospitalized patients
451 with cancer and coronavirus disease 2019: A systematic review and meta-analysis of cohort studies. *Cancer*. 2021.
452 <https://doi.org/10.1002/cncr.33386>
- 453 54. Hacısuleyman E, Hale C, Saito Y, Blachere NE, Bergh M, Conlon EG, Schaefer-Babajew DJ, DaSilva J, Muecksch
454 F, Gaebler C, Lifton R, Nussenzweig MC, Hatzioannou T, Bieniasz PD, Darnell RB. Vaccine Breakthrough Infections
455 with SARS-CoV-2 Variants. *N Engl J Med*. 2021 Jun 10;384(23):2212-2218. doi: 10.1056/NEJMoa2105000. Epub
456 2021 Apr 21. PMID: 33882219; PMCID: PMC8117968.
- 457
458
459

460 Fig 1 PRISMA

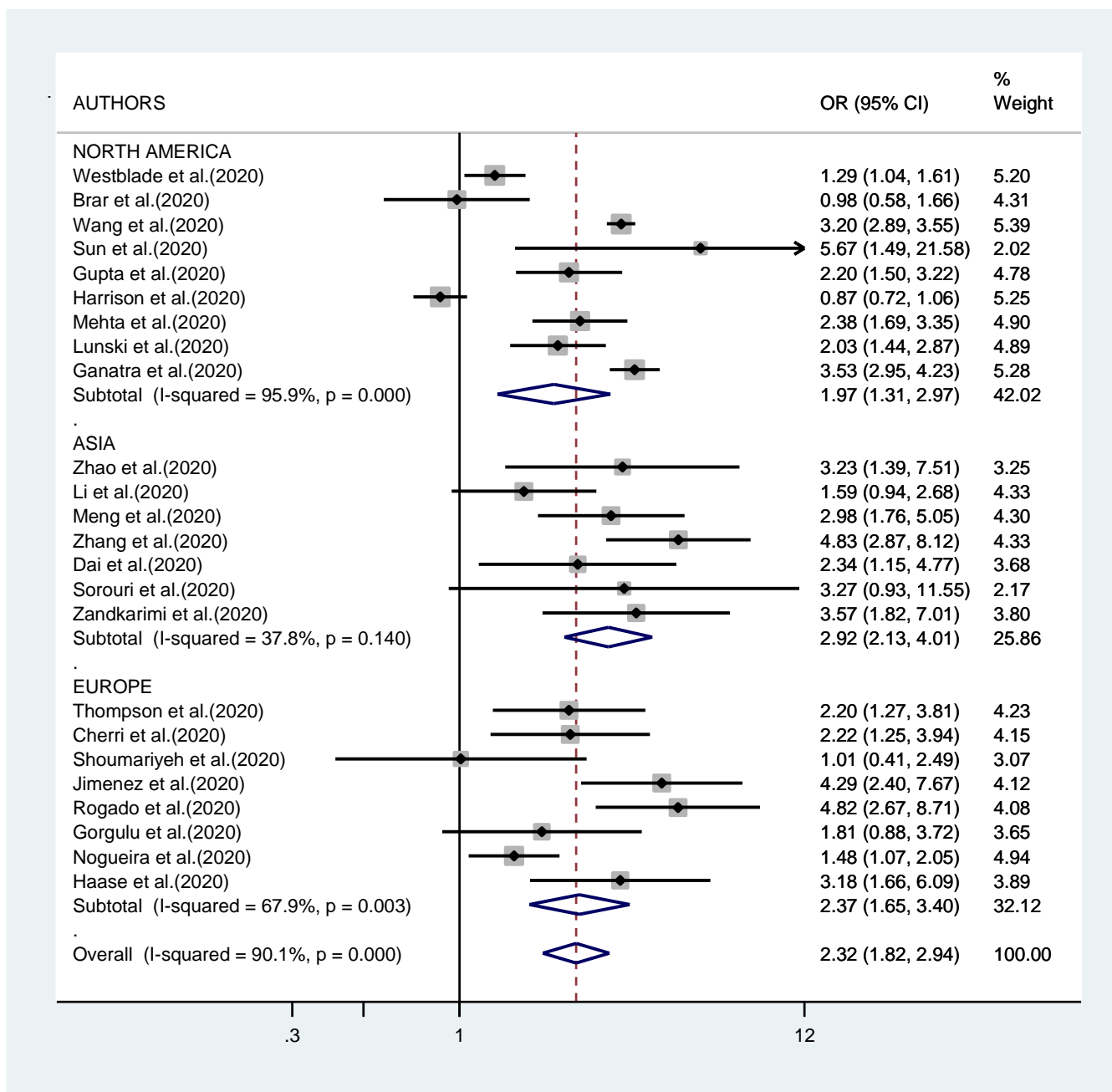


461 **2009 Flow Diagram**



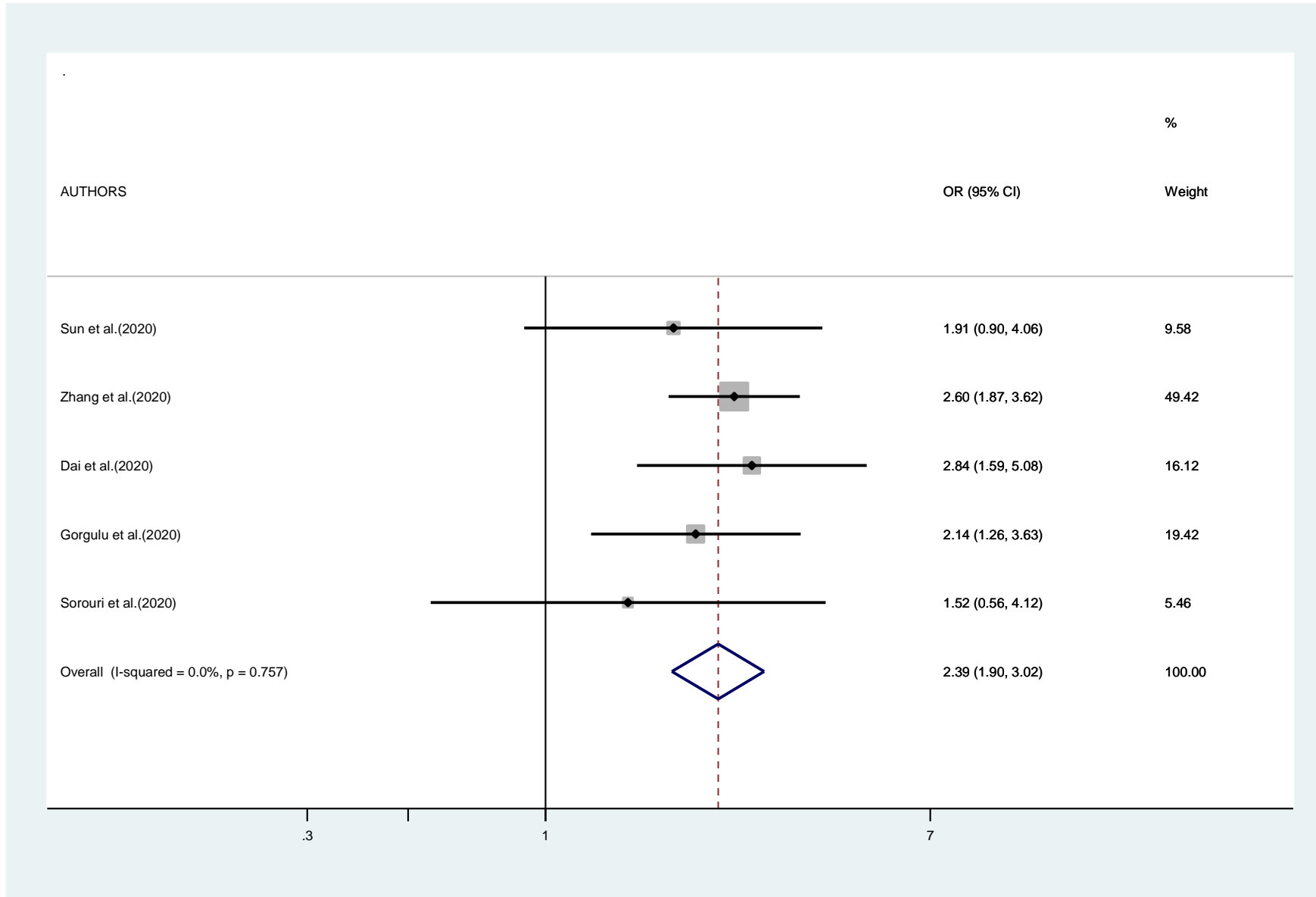
From: Moher D, Liberati A, Tetzlaff J, Altman DG, The PRISMA Group (2009). Preferred Reporting Items for Systematic Reviews and Meta-Analyses: The PRISMA Statement. PLoS Med 6(7): e1000097. doi:10.1371/journal.pmed1000097 For more information, visit www.prisma-statement.org.

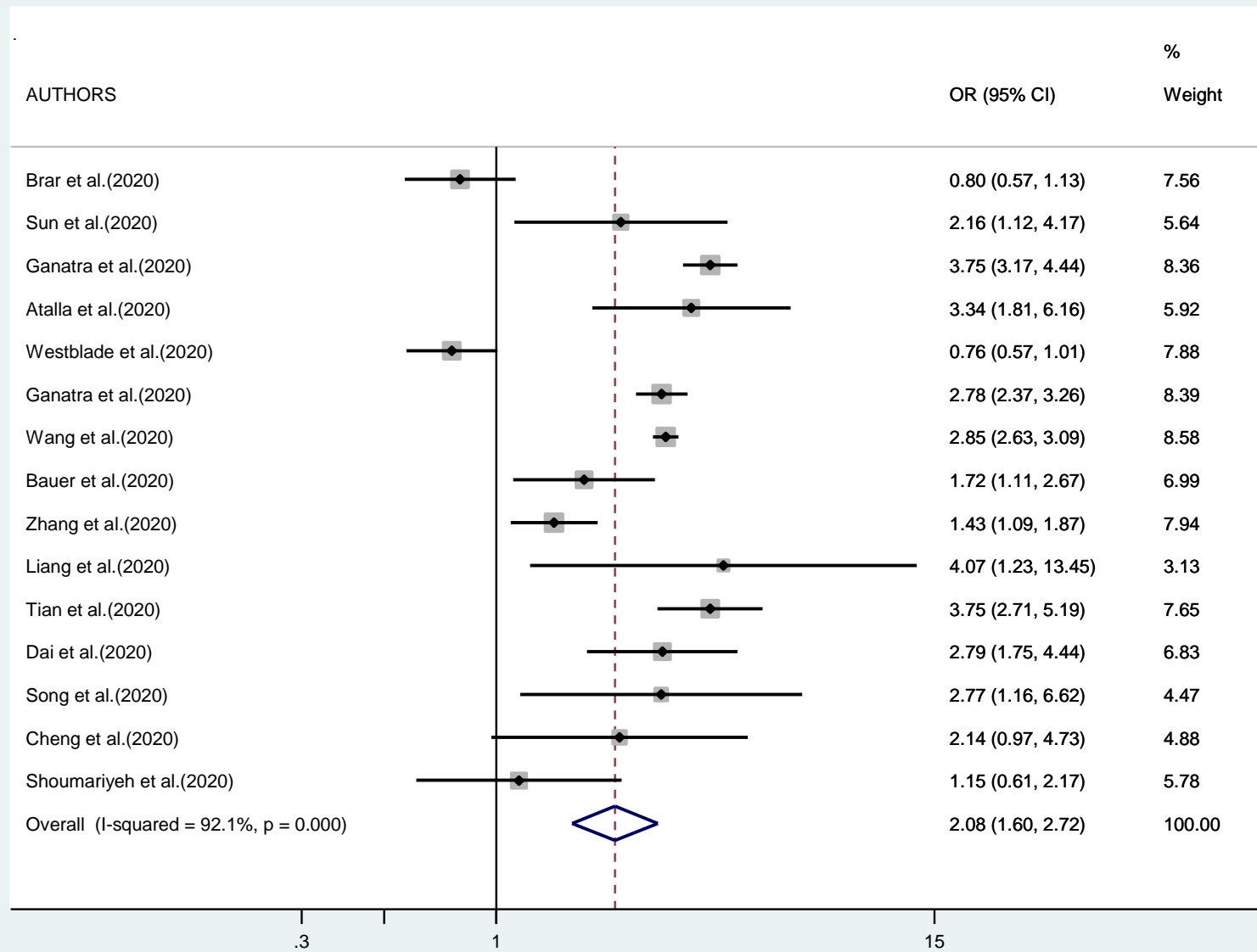
488 Fig 2 All type of cancer : Outcome 1 (Mortality) by Continental of publication

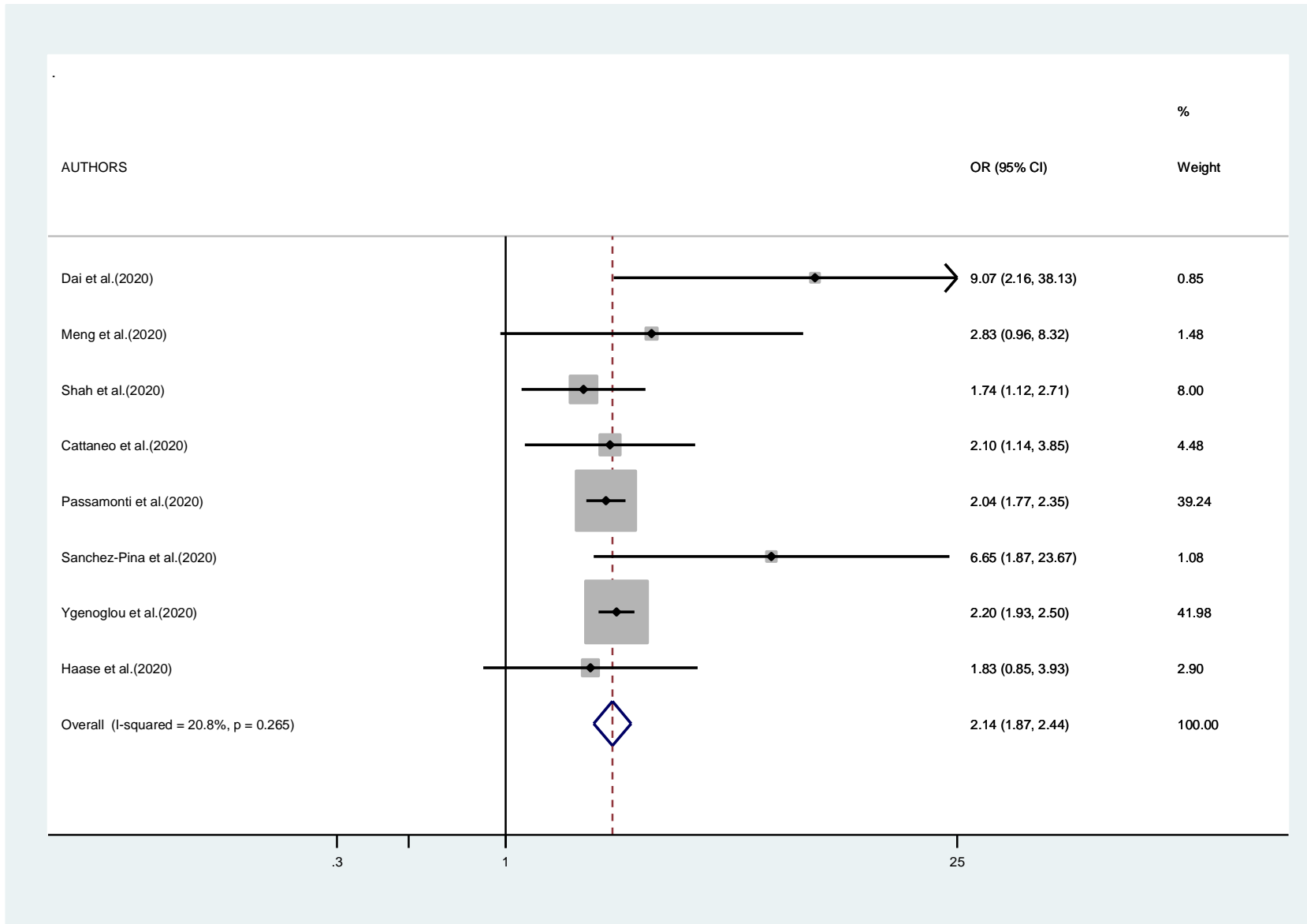


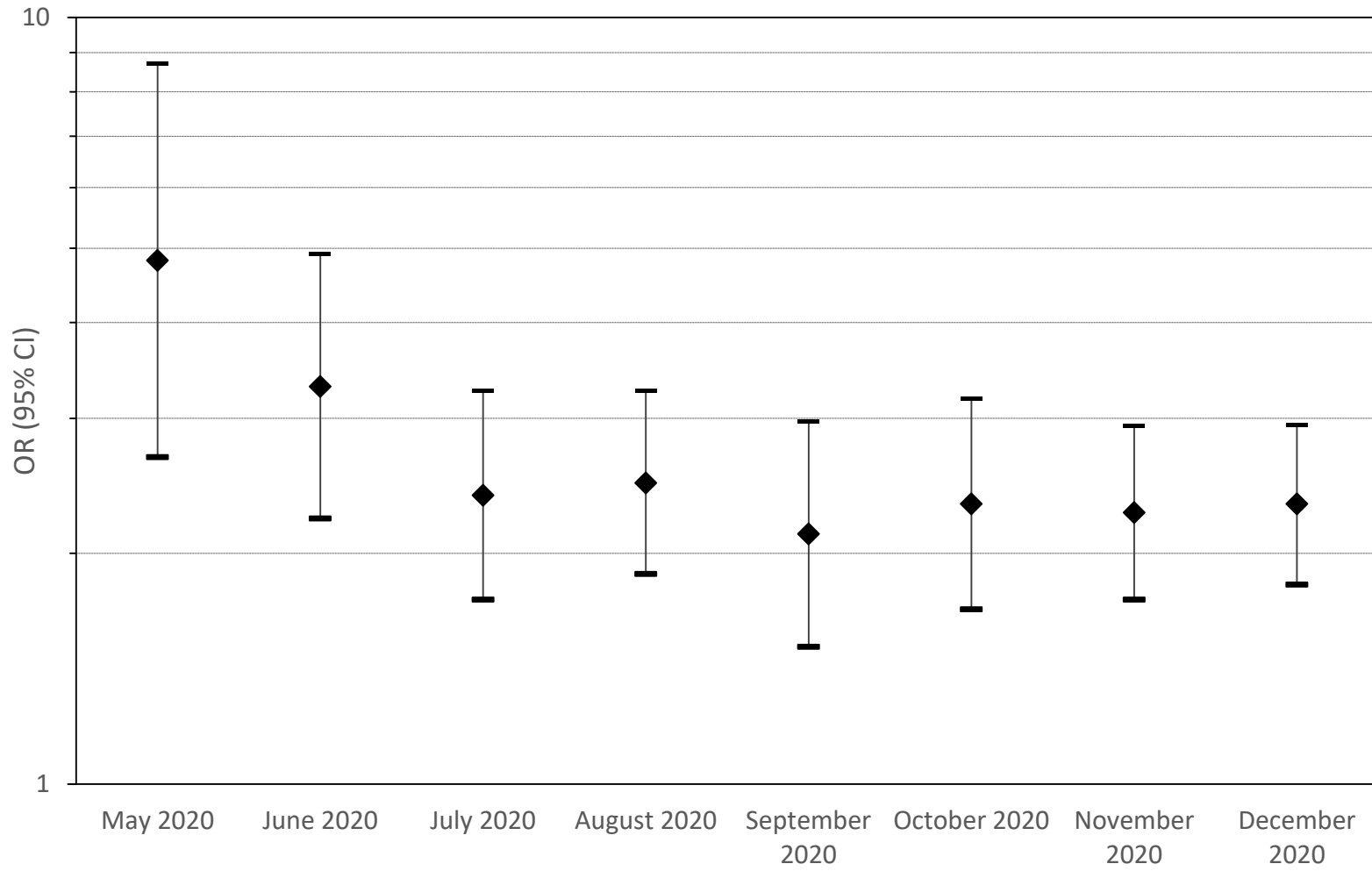
489

490









500

501

502

503

504

505 *Table 1 Selected characteristics of studies included in the meta-analysis - All cancers*

Reference	Country	N patients	N outcomes	Quality score	Comparison	Outcome	RR/OR*	95% CI
Dai et al.-2020 [11]	China	641	105	9.25	Internal	Mortality	2.34	1.15-4.77
						ICU	2.84	1.59-5.08
						Severity	2.79	1.75-4.44
Haase et al.-2020 [12]	Denmark	323	15	11.5	Internal	Mortality	3.18	1.66-6.09
Meng et al.-2020 [13]	China	436	109	9.5	Internal	Mortality	2.98°	1.76-5.05
Sun et al.-2020 [14]	USA	323	67	10.5	Internal	Mortality	5.67°	1.49-21.58
						ICU	1.91°	0.90-4.06
						Hospitalization	2.16°	1.12-4.17
Nogueira et al.-2020 [15]	Portugal	20293	611	9.25	Internal	Mortality	1.48	1.07-2.05
Zandkarimi et al.-2020 [16]	Iran	1831	32	6.5	Internal	Mortality	3.57	1.82-7.02
Zhao et al.-2020 [17]	China	539	23	6.5	Internal	Mortality	3.23	1.39-7.51
Harrison et al.-2020 [18]	USA	31461	1966	9.75	Internal	Mortality	0.87°	0.72-1.09
Gupta et al.-2020 [19]	USA	2215	112	7.5	Internal	Mortality	2.20	1.50-3.22

Ganatra et al.- 2020 [20]	USA	2476	195	9.25	Internal	Mortality	3.53	2.95-4.23
						Severity	3.75	3.17-4.44
						Hospitalization	2.78	2.37-3.26
Westblade et al.-2020 [21]	USA	2294	100	8.5	Internal	Mortality	1.29	1.04-1.61
						Severity	0.76	0.57-1.01
Wang et al.- 2020 [22]	USA	16570	1200	11	Internal	Mortality	3.20	2.89-3.55
						Hospitalization	2.85	2.63-3.09
Cherri et al.- 2020 [23]	Italy	2039	53	11	Internal	Mortality	2.22°	1.25-3.94
Gorgulu et al.- 2020 [24]	Turkey	483	75	11	Internal	Mortality	1.81°	0.88-3.72
						ICU	2.14	1.26-3.63
Jimenez et al.- 2020 [25]	Spain	1549	103	9.75	Internal	Mortality	4.29°	2.40-7.67
Thompson et al.-2020 [26]	UK	470	87	10	Internal	Mortality	2.20°	1.27-3.81
Li et al.-2020 [27]	China	1859	65	9	External	Mortality	1.59°	0.94-2.68
Shoumariyeh et al.-2020 [28]	Germany	78	39	8.5	External	Mortality	1.01	0.41-2.49
						Severity	1.15	0.61-2.17
Mehta et al.- 2020 [29]	USA	1308	218	8.5	External	Mortality	2.38	1.69-3.35
Rogado et al.- 2020 [30]	Spain	42495	45	8	External	Mortality	4.82	2.67-8.71

Brar et al.-2020 [31]	USA	585	117	9.5	External	Mortality	0.98	0.58-1.66
						Severity	0.80	0.57-1.13
Zhang et al.-2020 [32]	China	217	112	9.5	External	Mortality	4.83	2.87-8.12
						ICU	2.60	1.87-3.62
						Severity	1.43	1.09-1.87
Sorouri et al.-2020 [33]	Iran	159	53	10	External	Mortality	3.27°	0.93-11.55
						ICU	1.52°	0.56-4.12
Lunski et al.-2020 [34]	USA	5145	312	9.5	External	Mortality	2.03°	1.44-2.87
Atalla et al.-2020 [35]	USA	339	27	10.5	Internal	Hospitalization	3.34	1.81-6.16
Cheng et al.-2020 [36]	China	1476	29	6	Internal	Severity	2.14	0.97-4.73
Song et al.-2020 [37]	China	961	21	7	Internal	Severity	2.77	1.16-6.62
Liang et al.-2020 [38]	China	1590	18	8.75	Internal	Severity	4.07°	1.23-13.45
Bauer et al.-2020 [39]	USA	1449	108	8.5	Internal	Severity	1.72°	1.11-2.67
Tian et al.-2020 [40]	China	751	232	9	External	Severity	3.75	2.71-5.19

506 RR: Relative Risk
507 OR: Odds Ratio
508 CI: Confidence interval

509 ICU: Intensive Care Unit

510 * Results derived from data reported in the publication are in italics

511 °Risk estimates derived from multivariate analysis

512

AUTHOR – YEAR	COUNTRY	SAMPLE SIZE (n)	CANCER (n) O number of	QUALITY ASSESSMENT	COMPARISON	OUTCOME	RR/OR*	IC
Dai et al.-2020 [11]	China	641	9	9.25	Internal	Mortality	9.07	2.16-38.13
Haase et al.-2020 [12]	Denmark	323	13	11.5	Internal	Mortality	1.83	0.85-3.93
Meng et al.-2020 [13]	China	327	16	9.5	Internal	Mortality	2.83°	0.96-8.32
Ygenoglou et al.-2020 [41]	Turkey	1480	740	10.5	External	Mortality	2.20	1.93-2.50
Shah et al.-2020 [42]	UK	1183	68	9.75	External	Mortality	1.74°	1.12-2.71
Sanchez-pina et al.- 2020 [43]	Spain	92	39	10.25	External	Mortality	6.65°	1.87-23.67
Passamonti et al.- 2020 [44]	Italy		536	11	External	Mortality	2.04°	1.77-2.35
Cattaneo et al.-2020 [45]	Italy	204	102	9	External	Mortality	2.10	1.14-3.85

514 CASP: Critical Appraisal Skills Programme

515 RR: Relative Risk

516 OR: Odds Ratio

517 IC: Interval Confidence

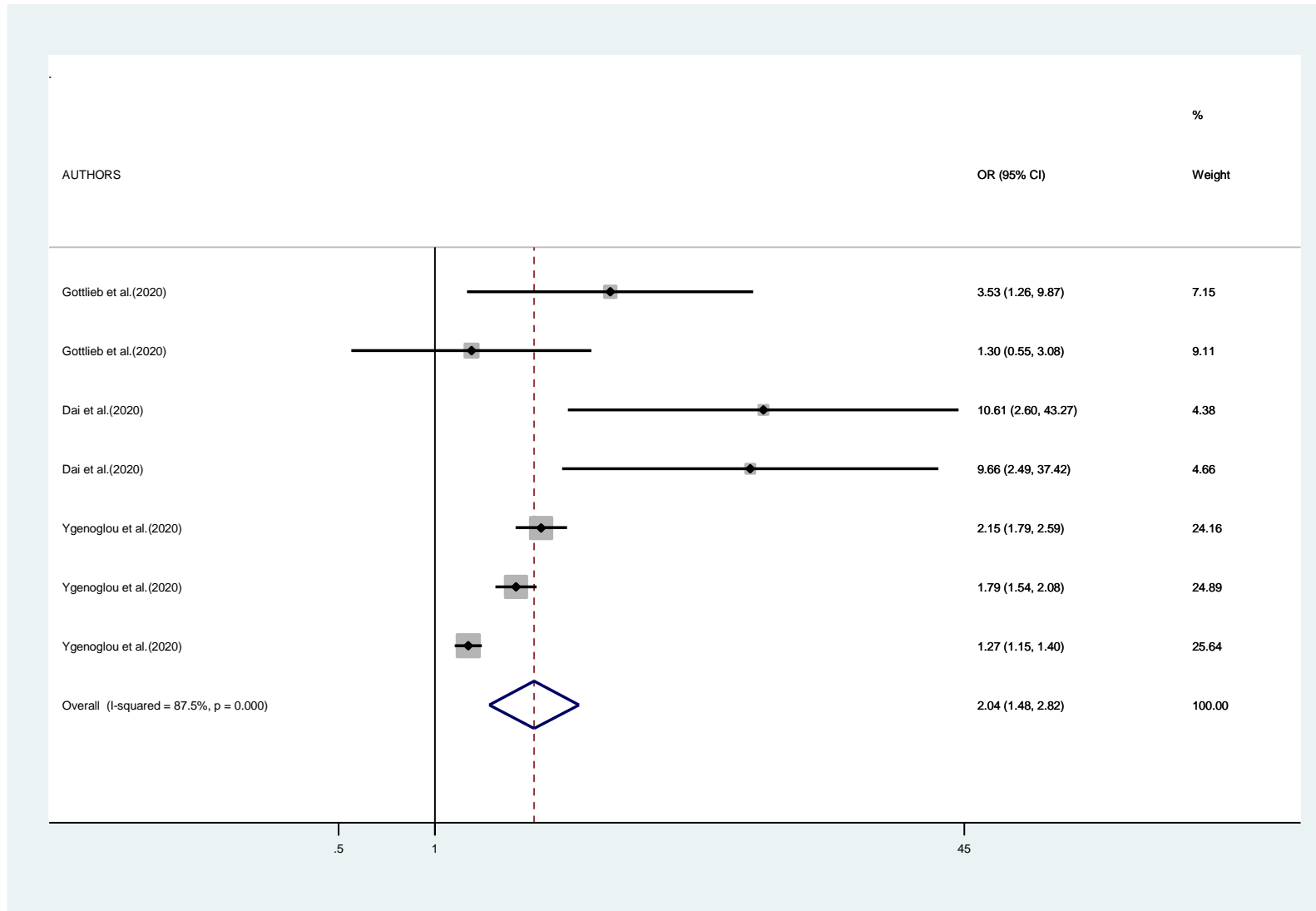
518 ICU: Intensive Care Unit

519 *italics characters when calculated manually

520 ° Risk estimates derived from multivariate analysis

Supplementary Figures

Fig S1 Hematological tumors: Outcome 2 (access to ICU), 3 (Hospitalization) , 4 (Severity of Symptoms)



FigS2 Quality Assesment by CASP_all type of cancer Outcome 1 (Mortality):

Acceptable studies (CASP>6-9.5) vs Good studies (CASP>9.5-12)

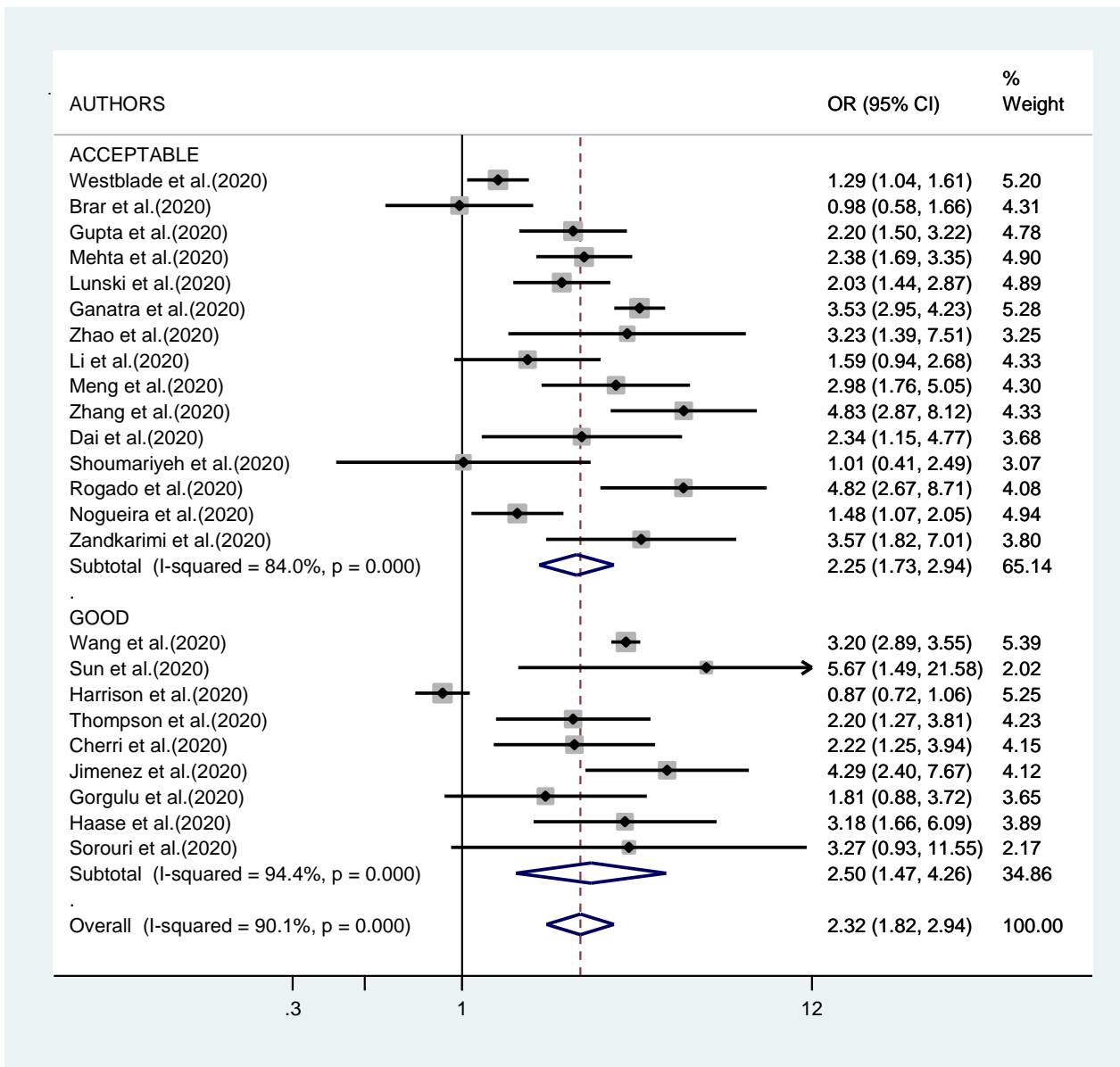


Fig S3 All type of cancer: Outcome 1 (Mortality) Reported vs Calculated OR

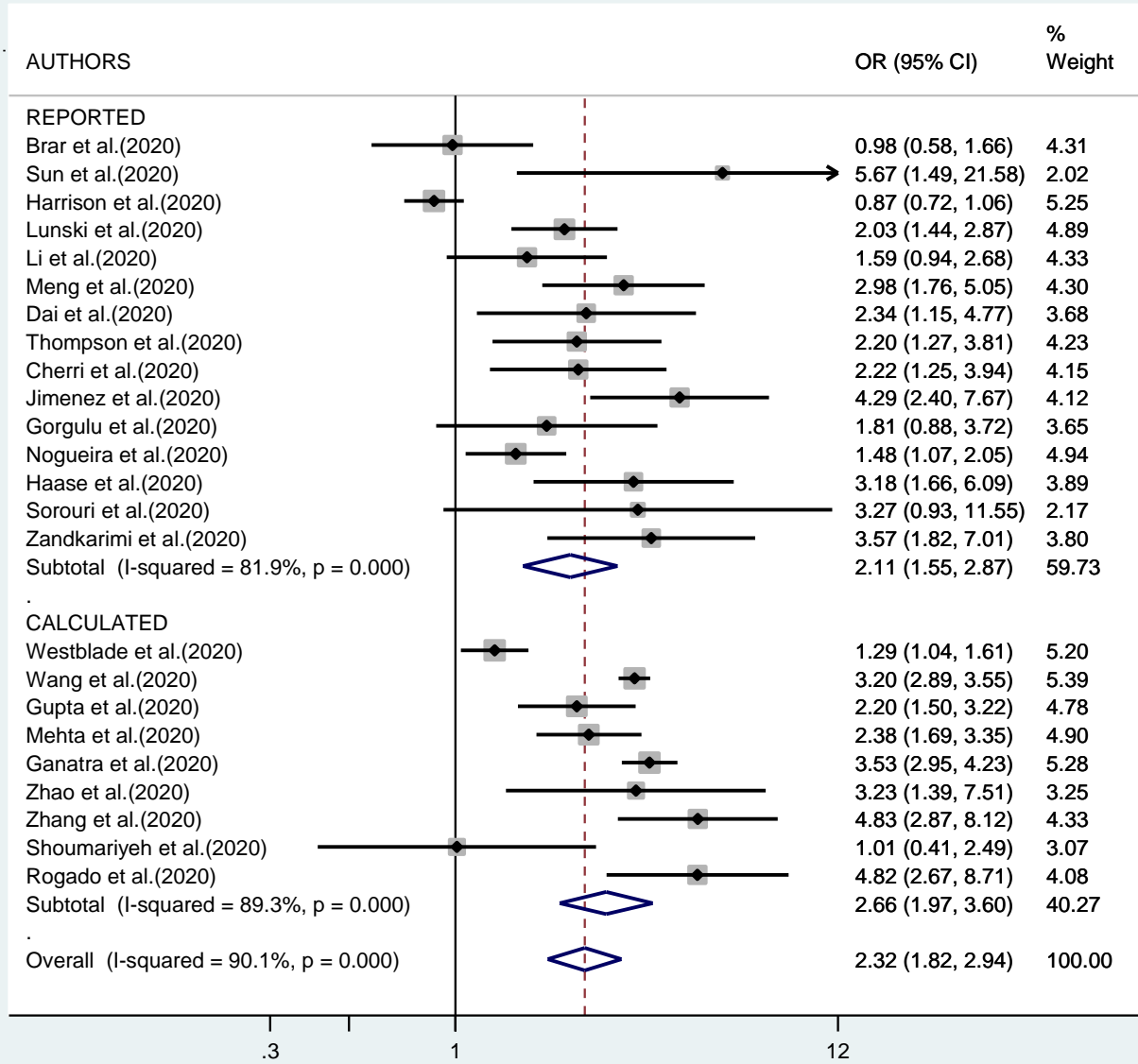
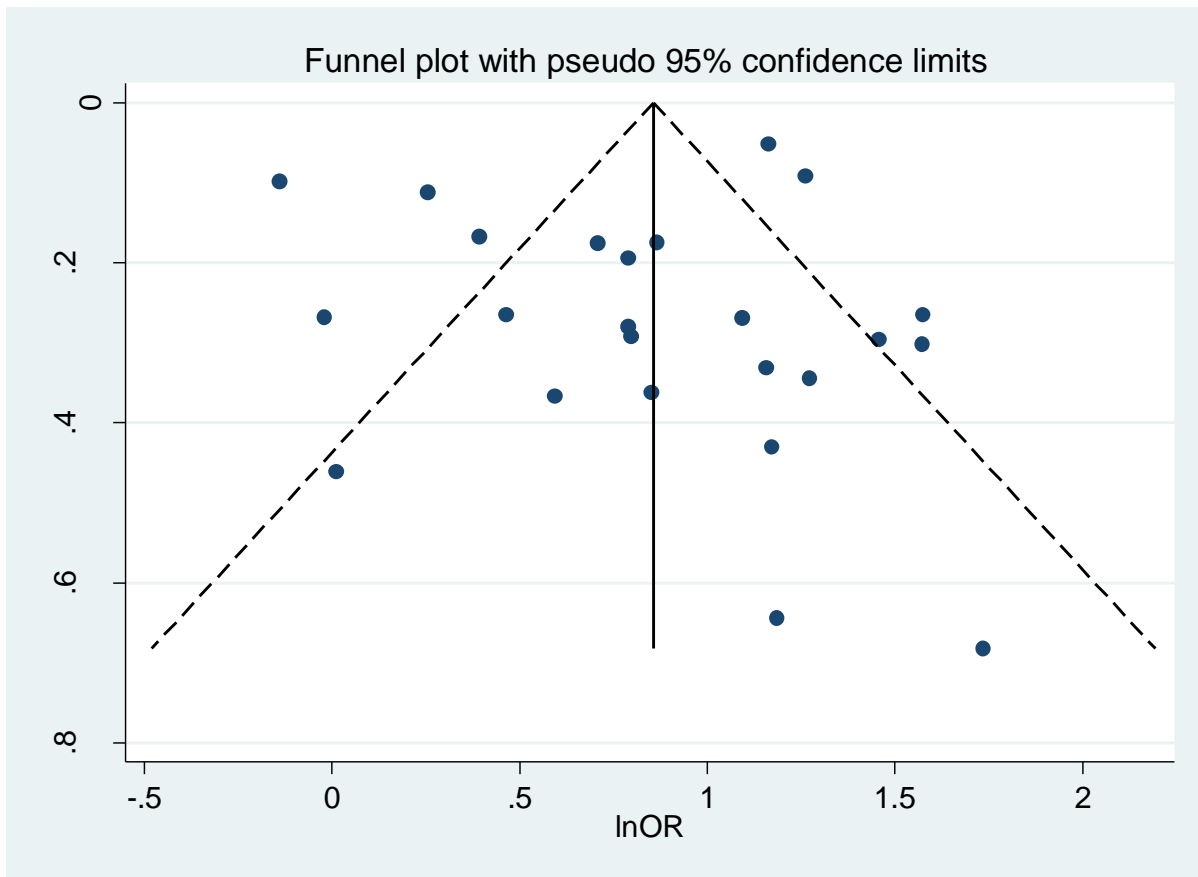


Fig S4 Funnel Plot: All type of cancer Outcome1 (Mortality)



p-value of Egger's test: P= 0.665 for Mortality studies